

Data Path : Z:\voasrv\HPCHEM1\MSVOA_X\Data\VX050724\
 Data File : VX041409.D
 Acq On : 07 May 2024 16:13
 Operator : JC/MD
 Sample : P2389-02 20X
 Misc : 5.0mL/MSVOA_X/WATER
 ALS Vial : 17 Sample Multiplier: 1

Instrument :
 MSVOA_X
 ClientSampleId :

Quant Time: May 08 02:02:29 2024
 Quant Method : Z:\voasrv\HPCHEM1\MSVOA_X\Method\82X043024W.M
 Quant Title : SW846 8260
 QLast Update : Wed May 01 02:38:17 2024
 Response via : Initial Calibration

Compound	R.T.	QIon	Response	Conc	Units	Dev(Min)

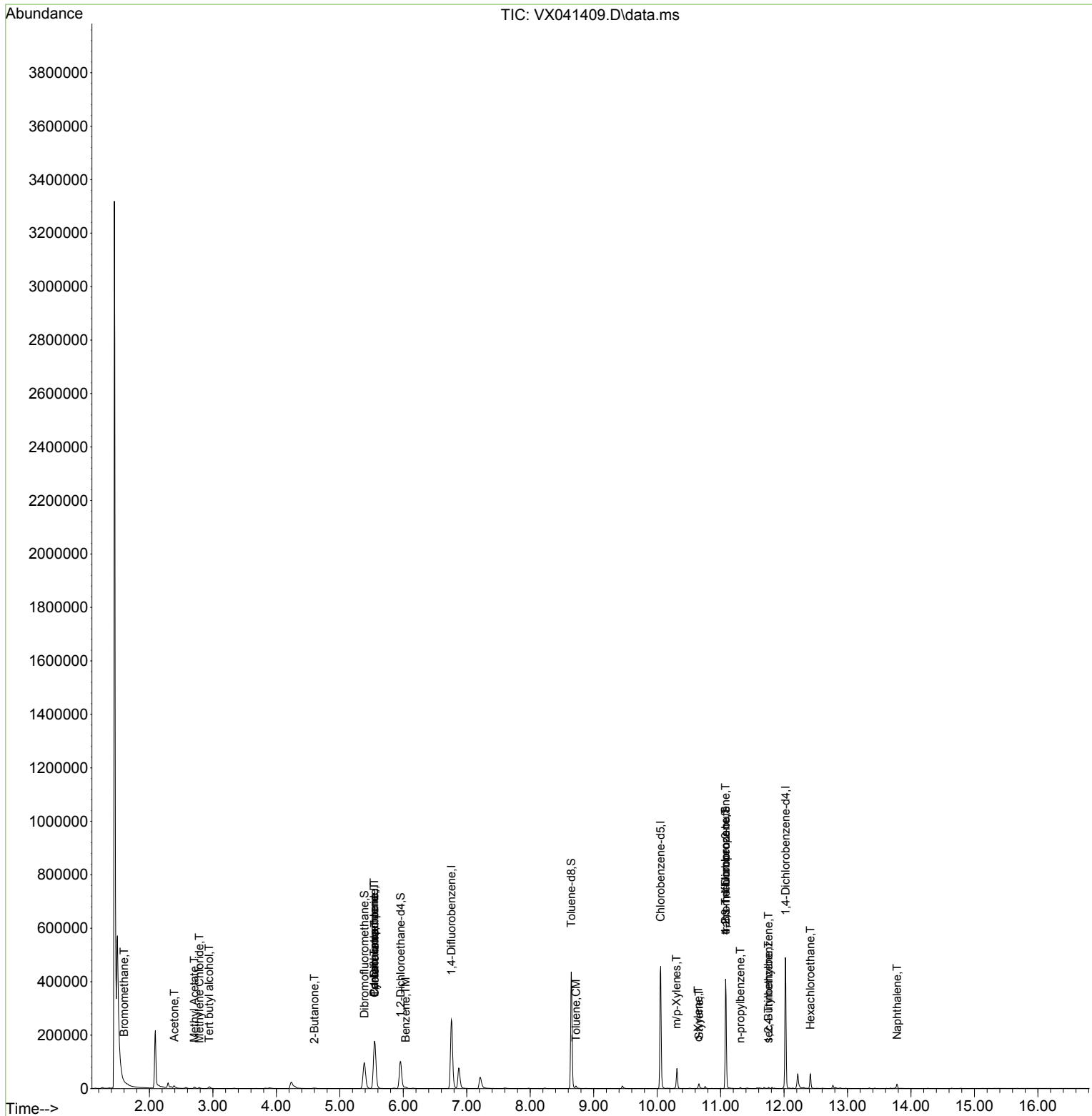
Internal Standards						
1) Pentafluorobenzene	5.544	168	193024	50.000	ug/l	# 0.00
34) 1,4-Difluorobenzene	6.757	114	279439	50.000	ug/l	0.00
63) Chlorobenzene-d5	10.055	117	217527	50.000	ug/l	0.00
72) 1,4-Dichlorobenzene-d4	12.024	152	111658	50.000	ug/l	0.00
System Monitoring Compounds						
33) 1,2-Dichloroethane-d4	5.958	65	103033	49.032	ug/l	0.00
Spiked Amount	50.000	Range 78 - 117	Recovery	=	98.060%	
35) Dibromofluoromethane	5.385	113	83801	44.253	ug/l	0.00
Spiked Amount	50.000	Range 75 - 124	Recovery	=	88.500%	
50) Toluene-d8	8.647	98	254541	42.468	ug/l	0.00
Spiked Amount	50.000	Range 92 - 112	Recovery	=	84.940%#	
62) 4-Bromofluorobenzene	11.079	95	97095	41.848	ug/l	0.00
Spiked Amount	50.000	Range 83 - 123	Recovery	=	83.700%	
Target Compounds						
						Qvalue
5) Bromomethane	1.599	94	225	0.229	ug/l	97
11) Tert butyl alcohol	2.941	59	4443	10.564	ug/l #	78
16) Acetone	2.392	43	9565	6.527	ug/l	99
18) Methyl Acetate	2.709	43	6636	3.087	ug/l	98
20) Methylene Chloride	2.788	84	2005	1.099	ug/l	87
25) 2-Butanone	4.599	43	2329	1.712	ug/l #	87
31) Cyclohexane	5.550	56	3149	1.242	ug/l #	1
36) 1,1-Dichloropropene	5.544	75	12052	5.322	ug/l #	51
38) Carbon Tetrachloride	5.544	117	16791	6.473	ug/l #	15
40) Benzene	6.038	78	5377	0.770	ug/l #	84
52) Toluene	8.720	92	3452	0.808	ug/l	95
68) m/p-Xylenes	10.305	106	2171	0.744	ug/l	97
69) o-Xylene	10.647	106	921	0.330	ug/l	82
70) Styrene	10.659	104	7439	1.623	ug/l	90
76) 1,2,3-Trichloropropane	11.079	75	49504	27.205	ug/l #	39
78) n-propylbenzene	11.311	91	1535	0.214	ug/l #	53
81) trans-1,4-Dichloro-2-b...	11.079	75	49504	74.103	ug/l #	5
84) 1,2,4-Trimethylbenzene	11.756	105	2194	0.392	ug/l	87
85) sec-Butylbenzene	11.756	105	2194	0.322	ug/l #	57
90) Hexachloroethane	12.415	117	2114	2.064	ug/l #	17
95) Naphthalene	13.780	128	10228	1.337	ug/l	98

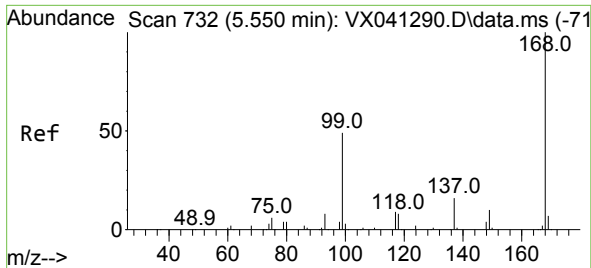
(#) = qualifier out of range (m) = manual integration (+) = signals summed

Data Path : Z:\voasrv\HPCHEM1\MSVOA_X\Data\VX050724\
 Data File : VX041409.D
 Acq On : 07 May 2024 16:13
 Operator : JC/MD
 Sample : P2389-02 20X
 Misc : 5.0mL/MSVOA_X/WATER
 ALS Vial : 17 Sample Multiplier: 1

Instrument :
 MSVOA_X
 ClientSampleId :

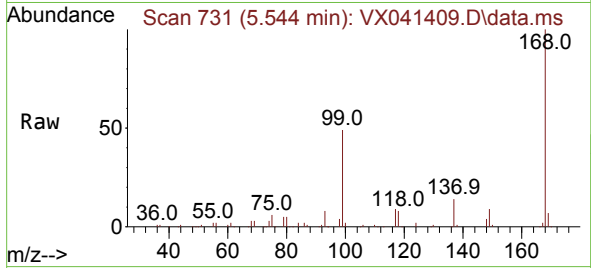
Quant Time: May 08 02:02:29 2024
 Quant Method : Z:\voasrv\HPCHEM1\MSVOA_X\Method\82X043024W.M
 Quant Title : SW846 8260
 QLast Update : Wed May 01 02:38:17 2024
 Response via : Initial Calibration



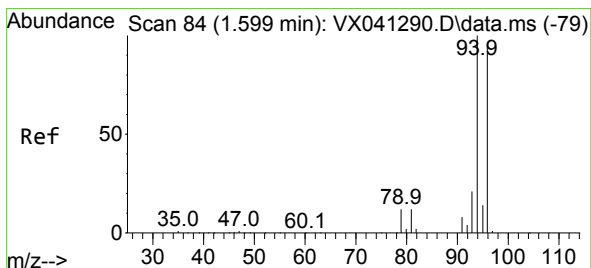
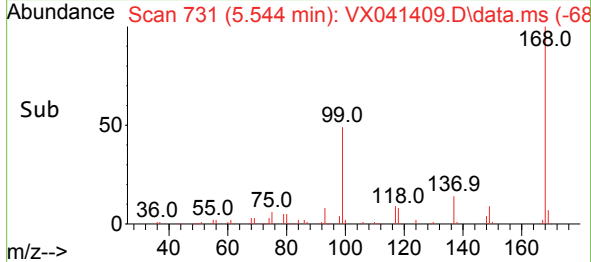
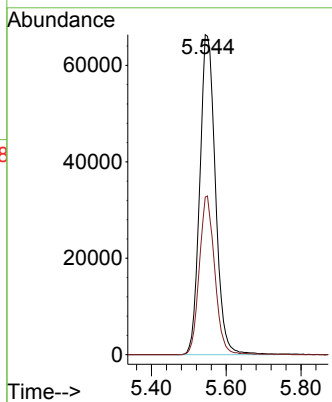


#1
 Pentafluorobenzene
 Concen: 50.000 ug/l
 RT: 5.544 min Scan# 71
 Delta R.T. -0.006 min
 Lab File: VX041409.D
 Acq: 07 May 2024 16:13

Instrument :
 MSVOA_X
 ClientSampleId :

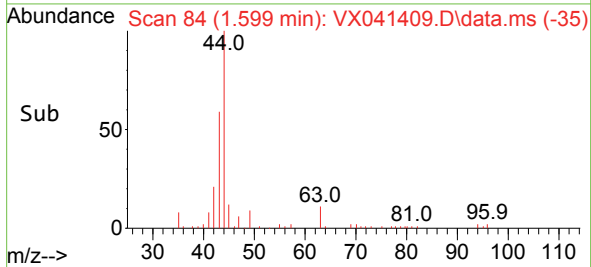
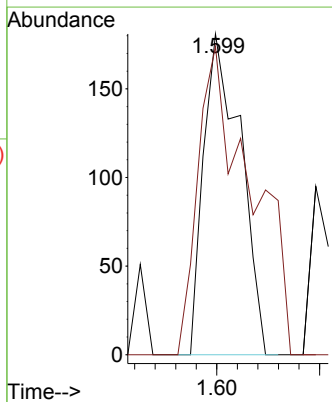
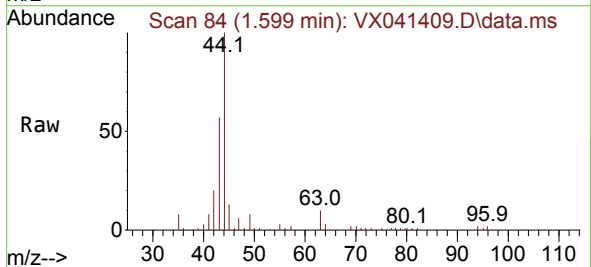


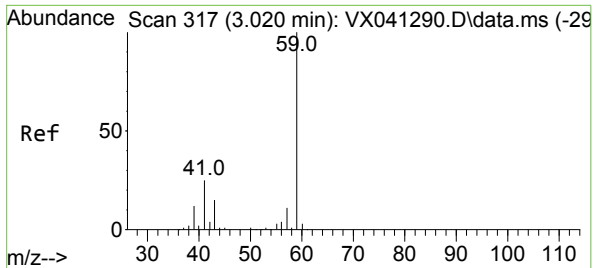
Tgt Ion:168 Resp: 193024
 Ion Ratio Lower Upper
 168 100
 99 49.2 56.6 85.0#



#5
 Bromomethane
 Concen: 0.229 ug/l
 RT: 1.599 min Scan# 84
 Delta R.T. 0.000 min
 Lab File: VX041409.D
 Acq: 07 May 2024 16:13

Tgt Ion: 94 Resp: 225
 Ion Ratio Lower Upper
 94 100
 96 96.1 74.6 111.8

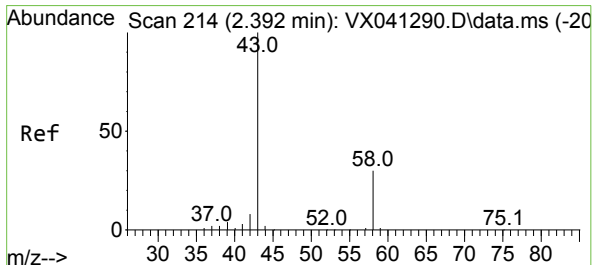
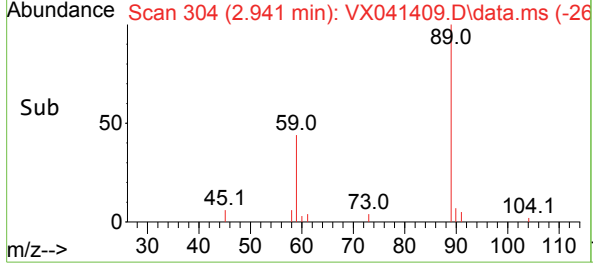
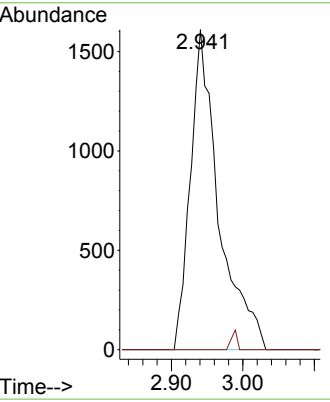
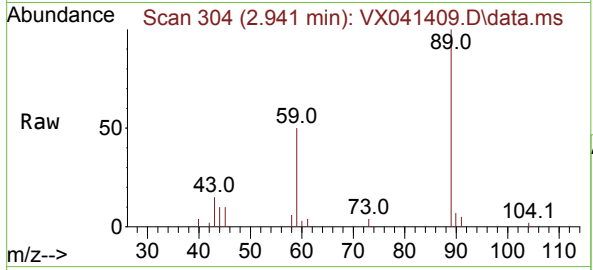




#11
 Tert butyl alcohol
 Concen: 10.564 ug/l
 RT: 2.941 min Scan# 304
 Delta R.T. -0.079 min
 Lab File: VX041409.D
 Acq: 07 May 2024 16:13

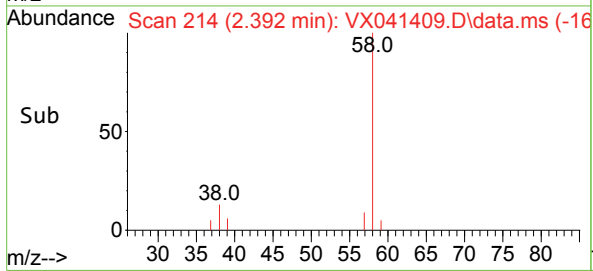
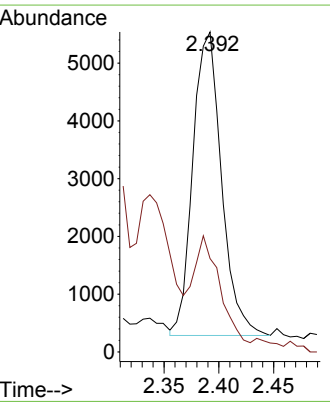
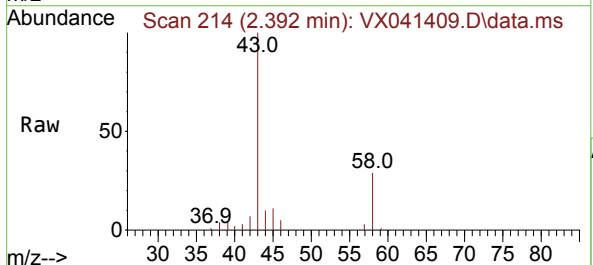
Instrument : MSVOA_X
 ClientSampleId :

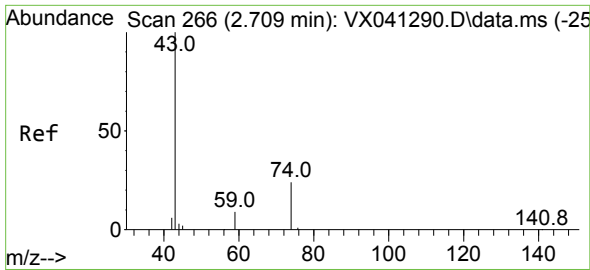
Tgt Ion: 59 Resp: 4443
 Ion Ratio Lower Upper
 59 100
 57 0.0 6.0 9.0#



#16
 Acetone
 Concen: 6.527 ug/l
 RT: 2.392 min Scan# 214
 Delta R.T. -0.000 min
 Lab File: VX041409.D
 Acq: 07 May 2024 16:13

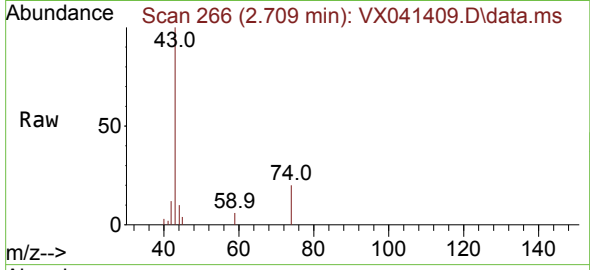
Tgt Ion: 43 Resp: 9565
 Ion Ratio Lower Upper
 43 100
 58 27.8 21.9 32.9



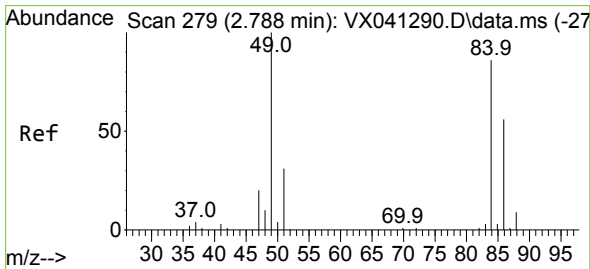
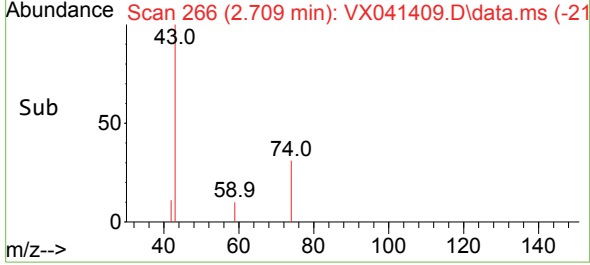
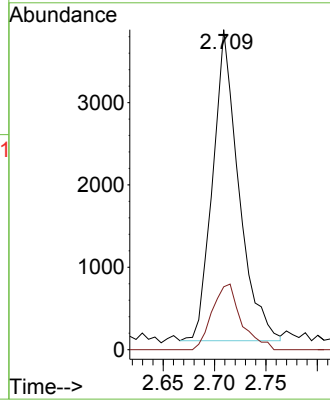


#18
 Methyl Acetate
 Concen: 3.087 ug/l
 RT: 2.709 min Scan# 20
 Delta R.T. 0.000 min
 Lab File: VX041409.D
 Acq: 07 May 2024 16:13

Instrument :
 MSVOA_X
 ClientSampleId :

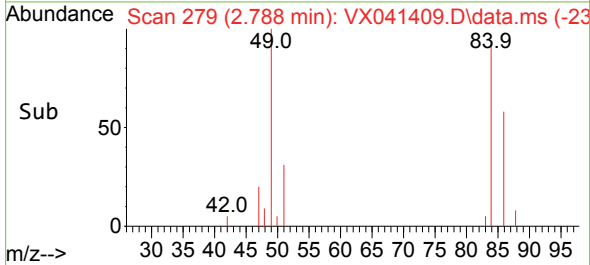
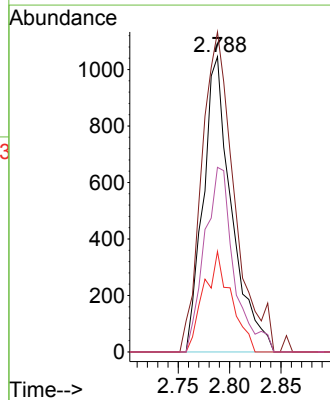
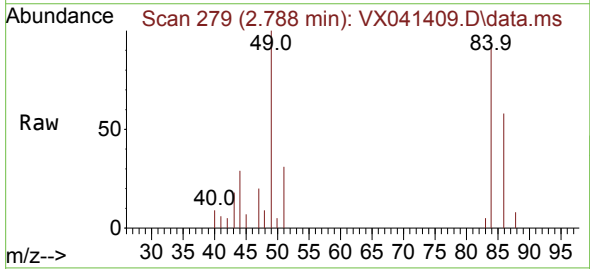


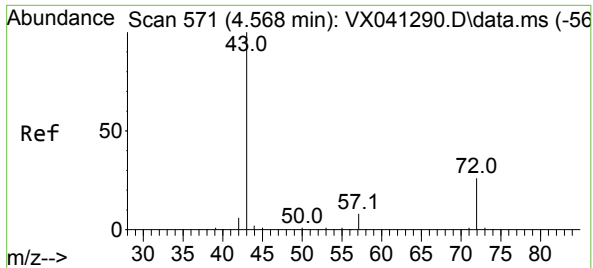
Tgt Ion: 43 Resp: 6636
 Ion Ratio Lower Upper
 43 100
 74 23.4 17.8 26.8



#20
 Methylene Chloride
 Concen: 1.099 ug/l
 RT: 2.788 min Scan# 279
 Delta R.T. 0.000 min
 Lab File: VX041409.D
 Acq: 07 May 2024 16:13

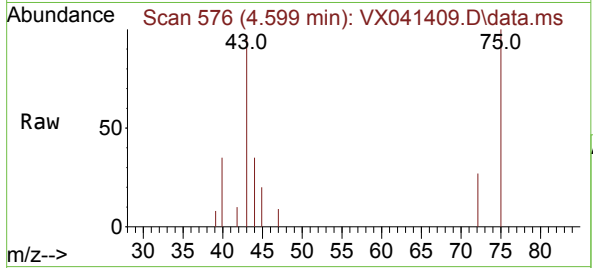
Tgt Ion: 84 Resp: 2005
 Ion Ratio Lower Upper
 84 100
 49 108.4 103.6 155.4
 51 34.1 33.8 50.6
 86 62.6 49.4 74.0



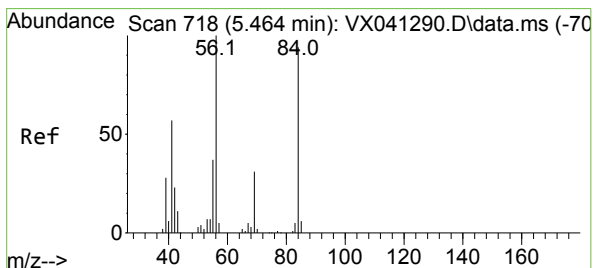
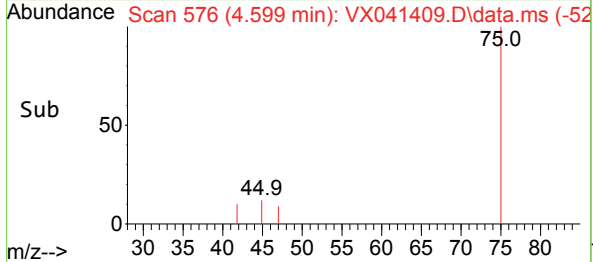
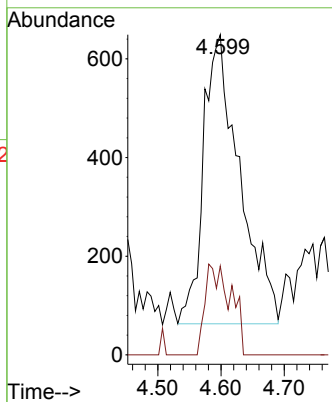


#25
 2-Butanone
 Concen: 1.712 ug/l
 RT: 4.599 min Scan# 51
 Delta R.T. 0.031 min
 Lab File: VX041409.D
 Acq: 07 May 2024 16:13

Instrument :
 MSVOA_X
 ClientSampleId :

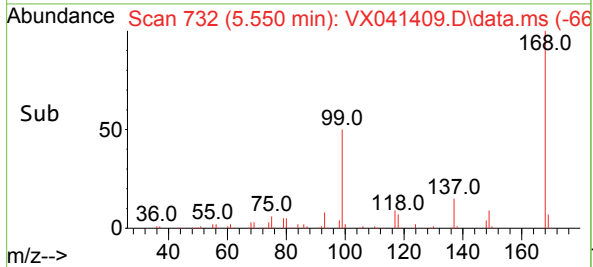
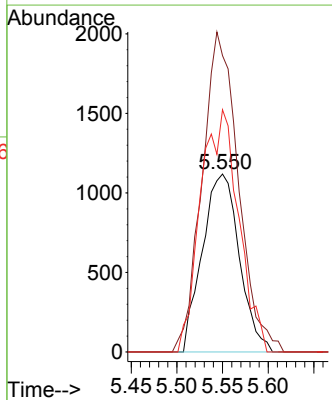
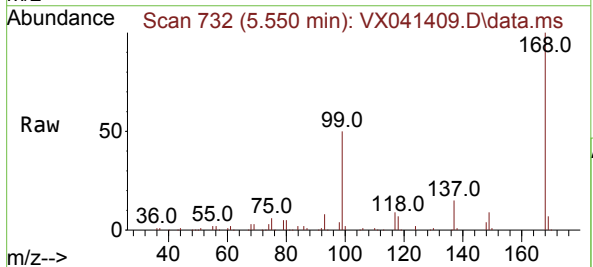


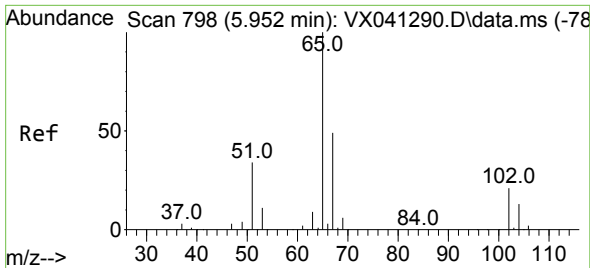
Tgt Ion: 43 Resp: 2329
 Ion Ratio Lower Upper
 43 100
 72 30.7 19.4 29.2#



#31
 Cyclohexane
 Concen: 1.242 ug/l
 RT: 5.550 min Scan# 732
 Delta R.T. 0.086 min
 Lab File: VX041409.D
 Acq: 07 May 2024 16:13

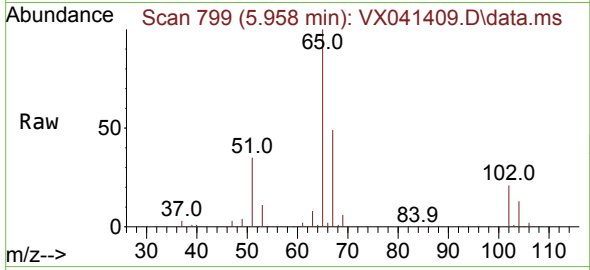
Tgt Ion: 56 Resp: 3149
 Ion Ratio Lower Upper
 56 100
 69 160.3 23.4 35.2#
 84 136.1 65.9 98.9#



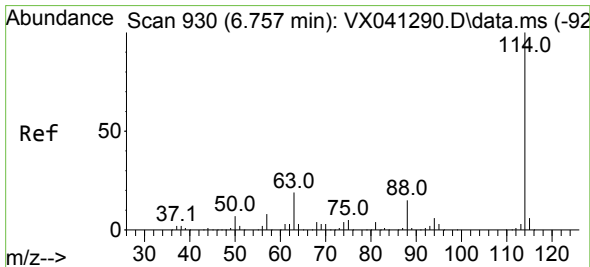
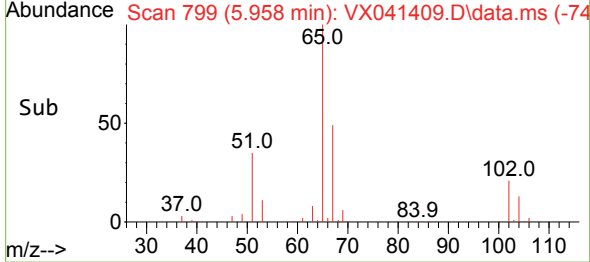
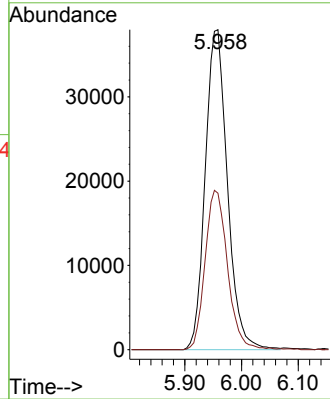


#33
 1,2-Dichloroethane-d4
 Concen: 49.032 ug/l
 RT: 5.958 min Scan# 798
 Delta R.T. 0.006 min
 Lab File: VX041409.D
 Acq: 07 May 2024 16:13

Instrument :
 MSVOA_X
 ClientSampleId :

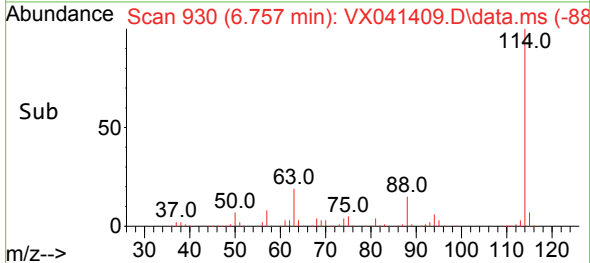
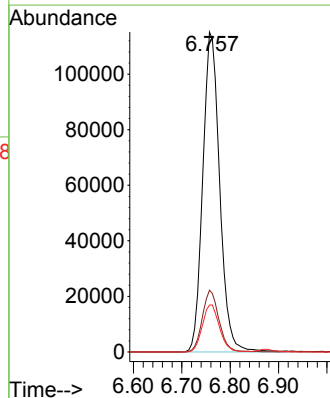
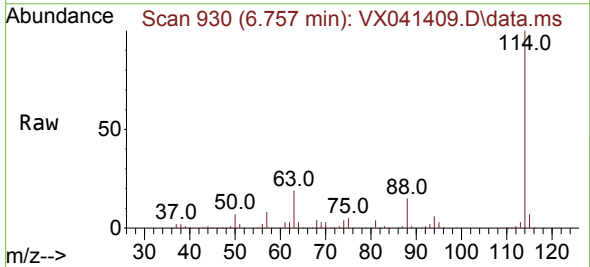


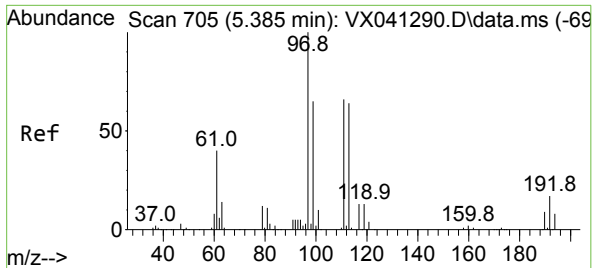
Tgt Ion: 65 Resp: 103033
 Ion Ratio Lower Upper
 65 100
 67 50.4 0.0 100.2



#34
 1,4-Difluorobenzene
 Concen: 50.000 ug/l
 RT: 6.757 min Scan# 930
 Delta R.T. 0.000 min
 Lab File: VX041409.D
 Acq: 07 May 2024 16:13

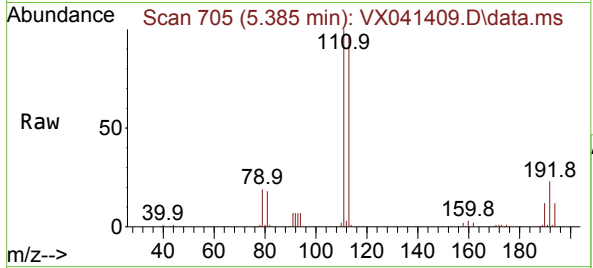
Tgt Ion: 114 Resp: 279439
 Ion Ratio Lower Upper
 114 100
 63 19.3 0.0 45.0
 88 14.7 0.0 36.6



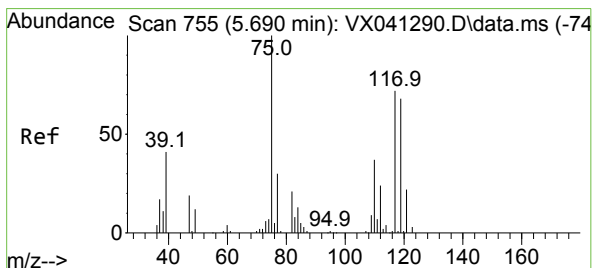
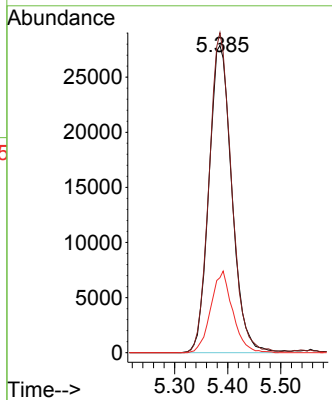
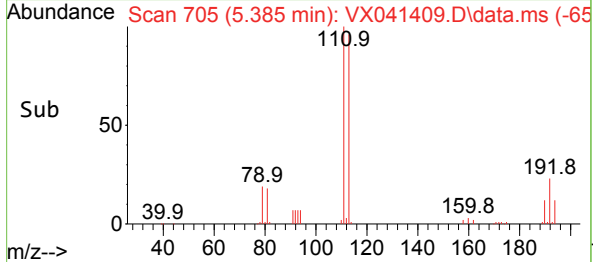


#35
 Dibromofluoromethane
 Concen: 44.253 ug/l
 RT: 5.385 min Scan# 705
 Delta R.T. 0.000 min
 Lab File: VX041409.D
 Acq: 07 May 2024 16:13

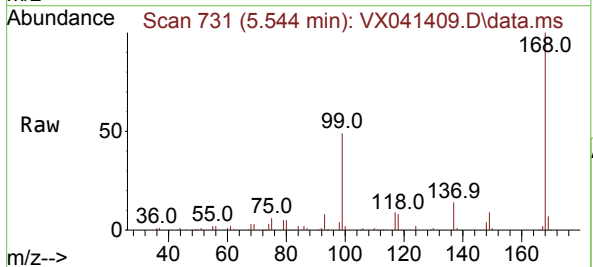
Instrument : MSVOA_X
 ClientSampleId :



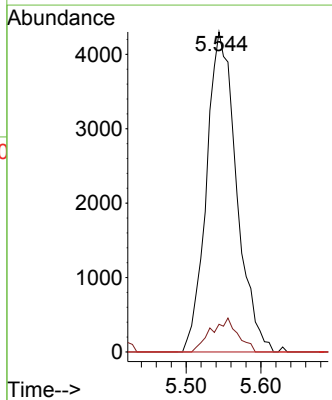
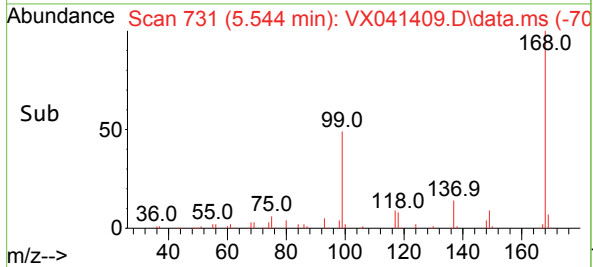
Tgt Ion: 113 Resp: 83801
 Ion Ratio Lower Upper
 113 100
 111 101.8 82.9 124.3
 192 25.3 13.3 19.9#

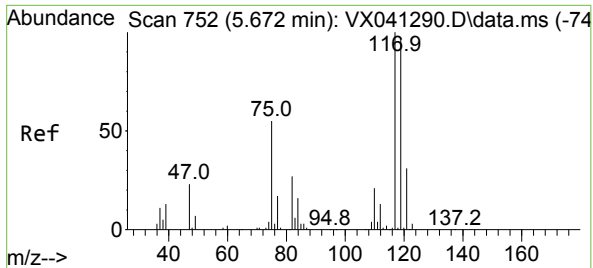


#36
 1,1-Dichloropropene
 Concen: 5.322 ug/l
 RT: 5.544 min Scan# 731
 Delta R.T. -0.146 min
 Lab File: VX041409.D
 Acq: 07 May 2024 16:13



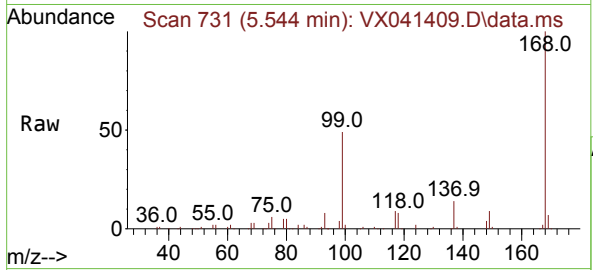
Tgt Ion: 75 Resp: 12052
 Ion Ratio Lower Upper
 75 100
 110 9.4 17.0 50.9#
 77 0.0 24.7 37.1#



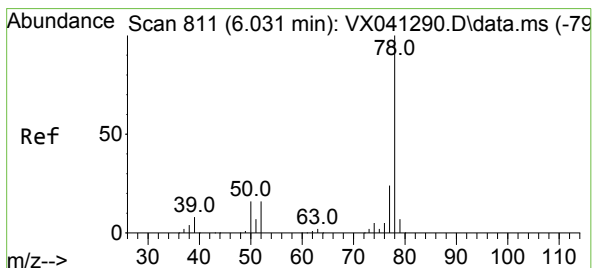
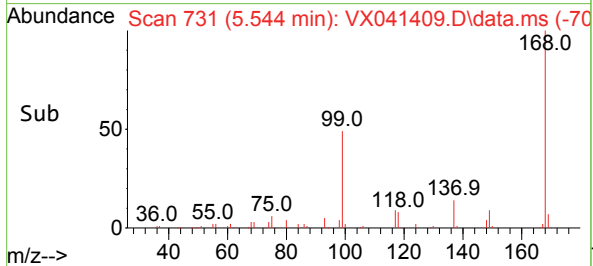
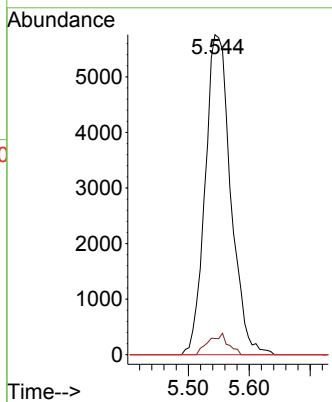


#38
 Carbon Tetrachloride
 Concen: 6.473 ug/l
 RT: 5.544 min Scan# 711
 Delta R.T. -0.128 min
 Lab File: VX041409.D
 Acq: 07 May 2024 16:13

Instrument :
 MSVOA_X
 ClientSampleId :

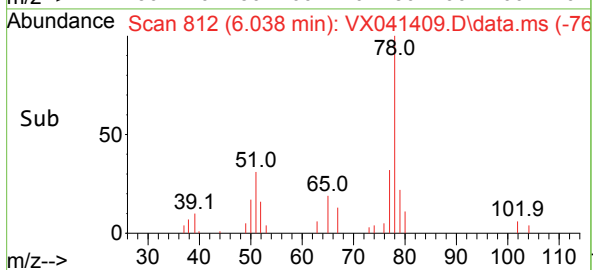
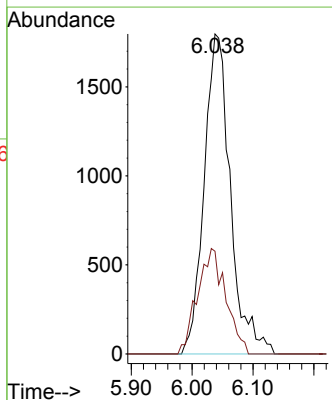
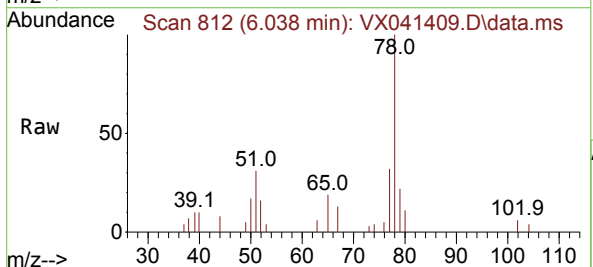


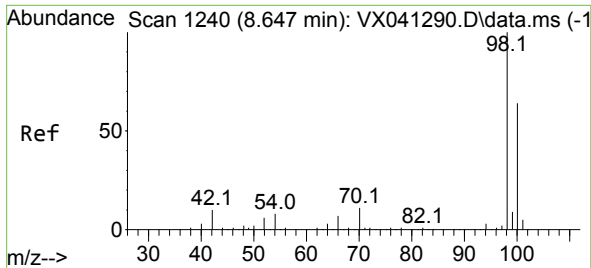
Tgt Ion:117 Resp: 16791
 Ion Ratio Lower Upper
 117 100
 119 5.1 78.2 117.2#
 121 0.0 24.4 36.6#



#40
 Benzene
 Concen: 0.770 ug/l
 RT: 6.038 min Scan# 812
 Delta R.T. 0.006 min
 Lab File: VX041409.D
 Acq: 07 May 2024 16:13

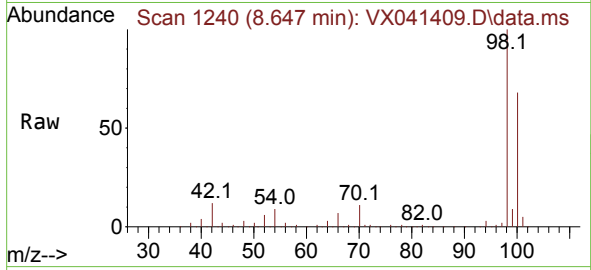
Tgt Ion: 78 Resp: 5377
 Ion Ratio Lower Upper
 78 100
 77 32.1 19.3 28.9#



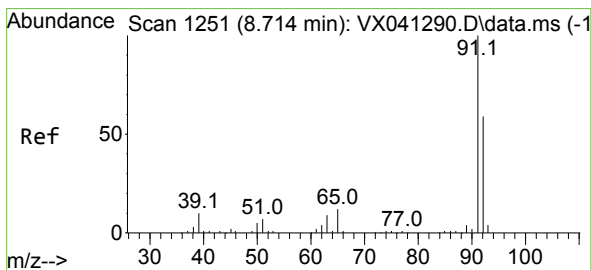
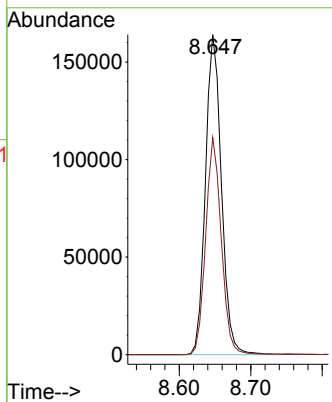
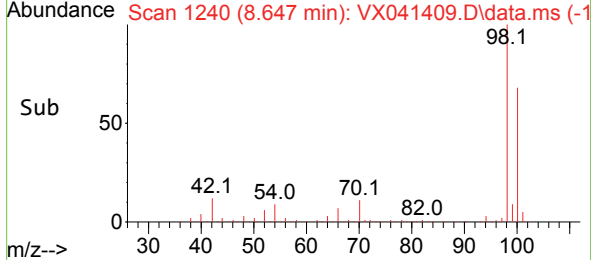


#50
 Toluene-d8
 Concen: 42.468 ug/l
 RT: 8.647 min Scan# 11
 Delta R.T. 0.000 min
 Lab File: VX041409.D
 Acq: 07 May 2024 16:13

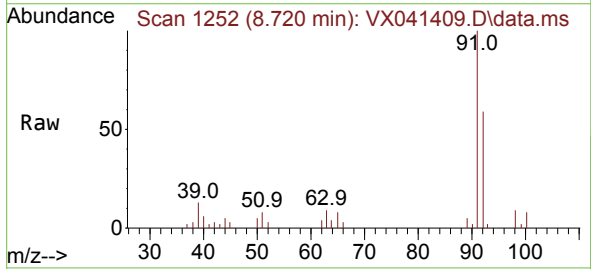
Instrument :
 MSVOA_X
 ClientSampleId :



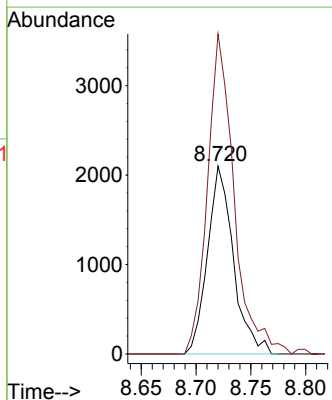
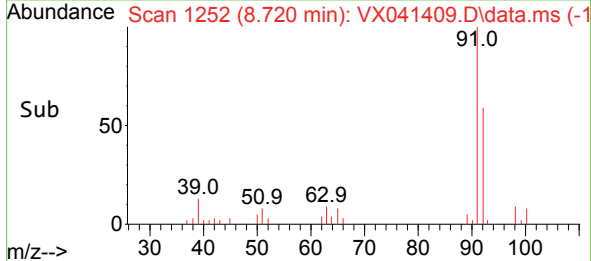
Tgt Ion: 98 Resp: 254541
 Ion Ratio Lower Upper
 98 100
 100 66.4 53.1 79.7

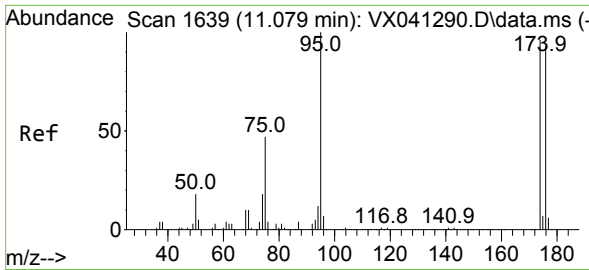


#52
 Toluene
 Concen: 0.808 ug/l
 RT: 8.720 min Scan# 1252
 Delta R.T. 0.006 min
 Lab File: VX041409.D
 Acq: 07 May 2024 16:13



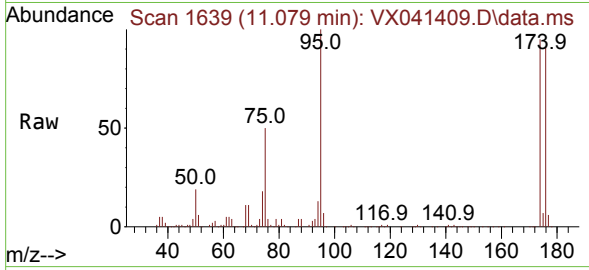
Tgt Ion: 92 Resp: 3452
 Ion Ratio Lower Upper
 92 100
 91 175.1 134.2 201.2



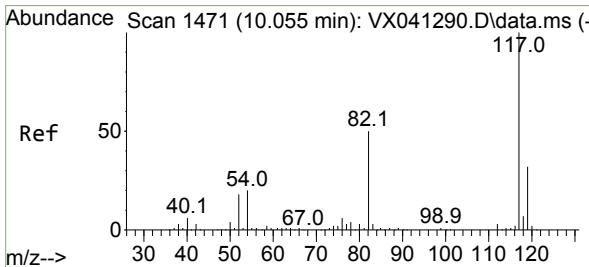
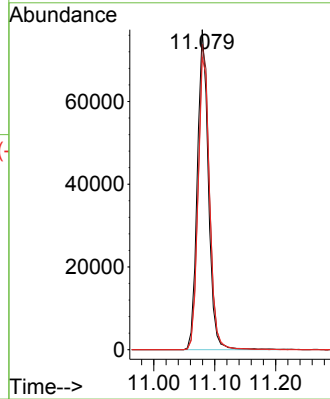
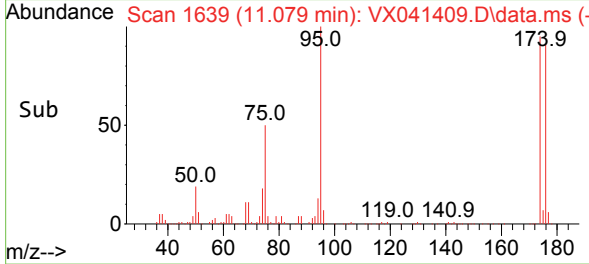


#62
 4-Bromofluorobenzene
 Concen: 41.848 ug/l
 RT: 11.079 min Scan# 1639
 Delta R.T. 0.000 min
 Lab File: VX041409.D
 Acq: 07 May 2024 16:13

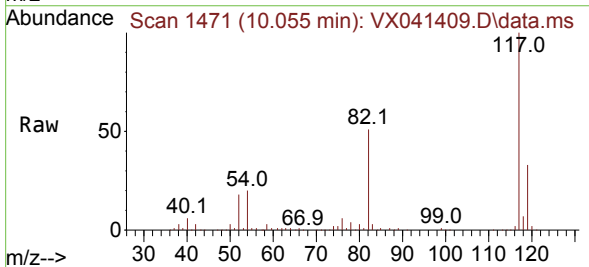
Instrument :
 MSVOA_X
 ClientSampleId :



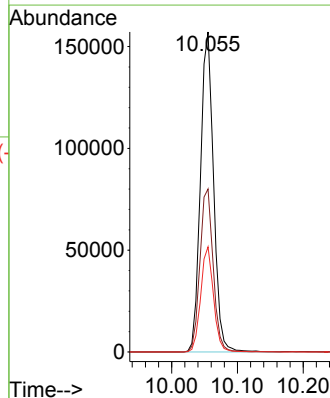
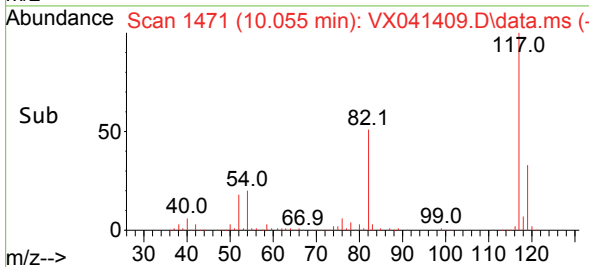
Tgt Ion: 95 Resp: 97095
 Ion Ratio Lower Upper
 95 100
 174 98.2 0.0 135.6
 176 95.6 0.0 131.0

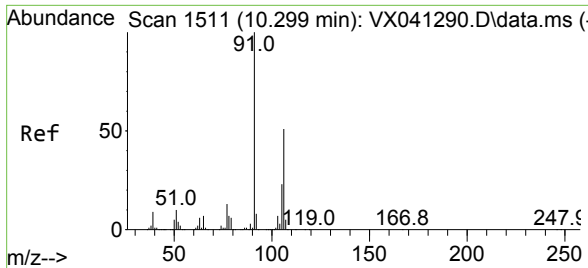


#63
 Chlorobenzene-d5
 Concen: 50.000 ug/l
 RT: 10.055 min Scan# 1471
 Delta R.T. 0.000 min
 Lab File: VX041409.D
 Acq: 07 May 2024 16:13



Tgt Ion: 117 Resp: 217527
 Ion Ratio Lower Upper
 117 100
 82 50.9 46.2 69.4
 119 32.8 25.5 38.3

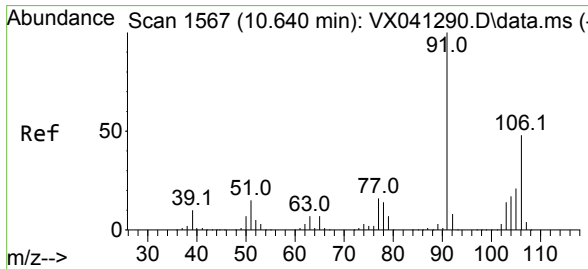
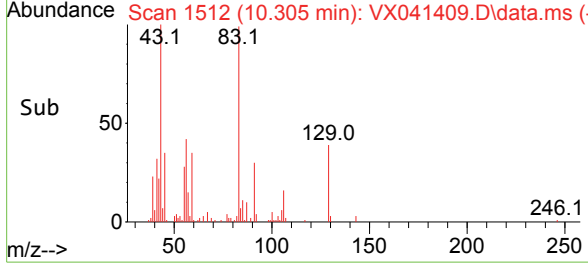
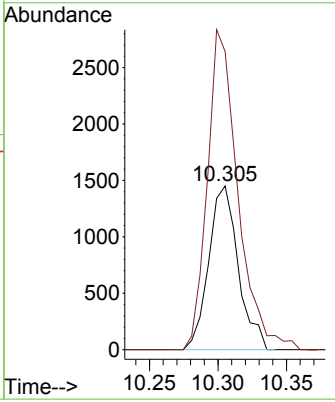
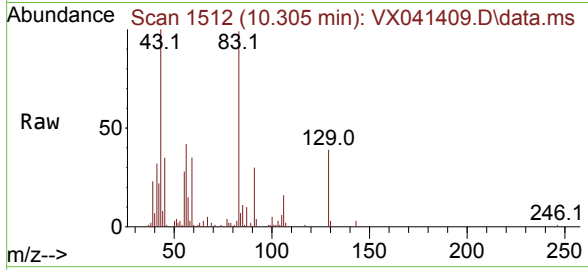




#68
 m/p-Xylenes
 Concen: 0.744 ug/l
 RT: 10.305 min Scan# 1512
 Delta R.T. 0.006 min
 Lab File: VX041409.D
 Acq: 07 May 2024 16:13

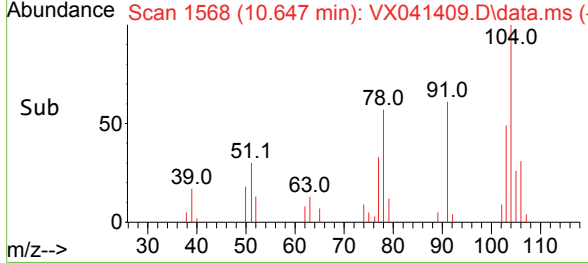
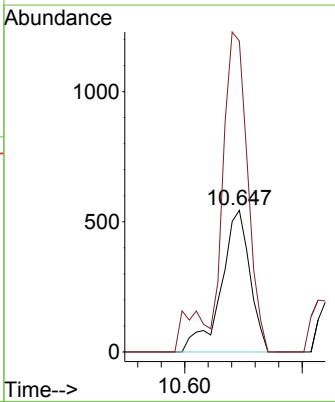
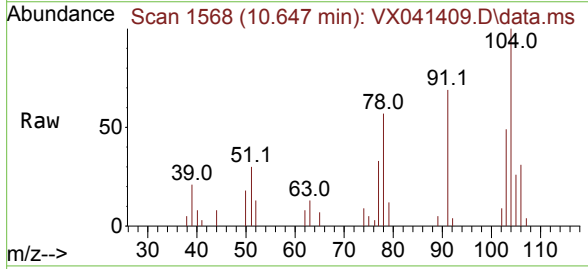
Instrument : MSVOA_X
 ClientSampleId :

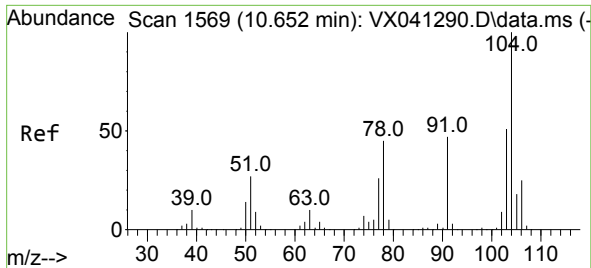
Tgt Ion:106 Resp: 2171
 Ion Ratio Lower Upper
 106 100
 91 202.4 165.5 248.3



#69
 o-Xylene
 Concen: 0.330 ug/l
 RT: 10.647 min Scan# 1568
 Delta R.T. 0.006 min
 Lab File: VX041409.D
 Acq: 07 May 2024 16:13

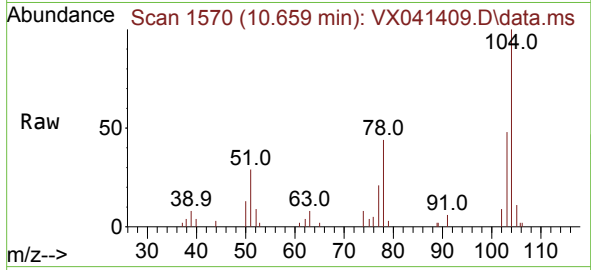
Tgt Ion:106 Resp: 921
 Ion Ratio Lower Upper
 106 100
 91 189.6 108.9 326.8



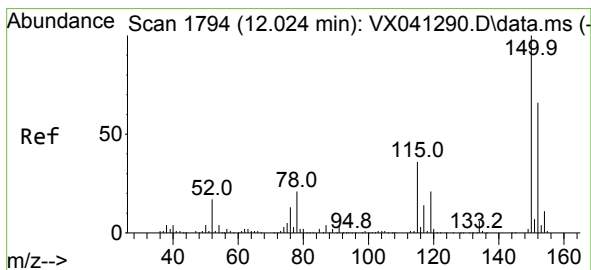
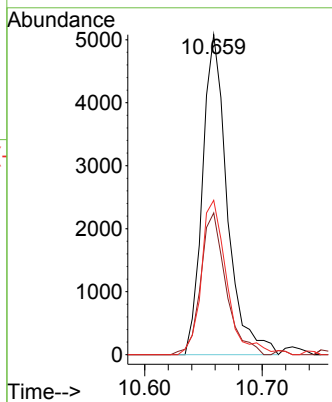
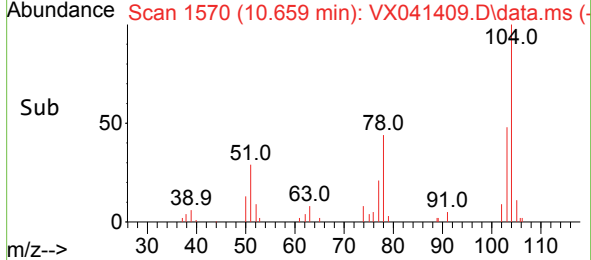


#70
 Styrene
 Concen: 1.623 ug/l
 RT: 10.659 min Scan# 11
 Delta R.T. 0.006 min
 Lab File: VX041409.D
 Acq: 07 May 2024 16:13

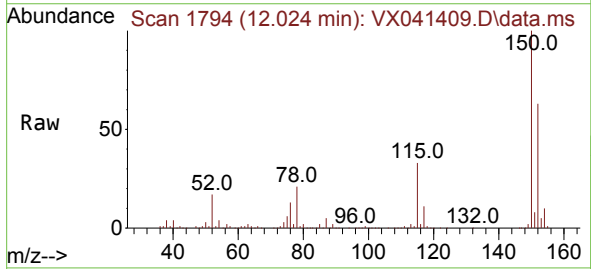
Instrument :
 MSVOA_X
 ClientSampleId :



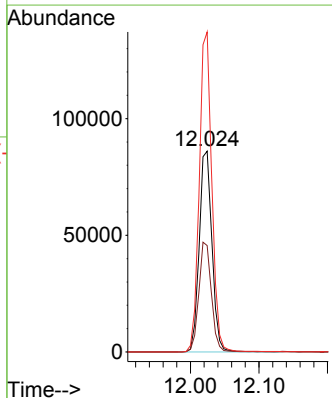
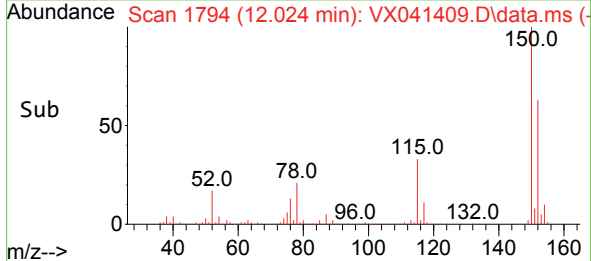
Tgt Ion:104 Resp: 7439
 Ion Ratio Lower Upper
 104 100
 78 45.1 43.6 65.4
 103 49.7 43.6 65.4

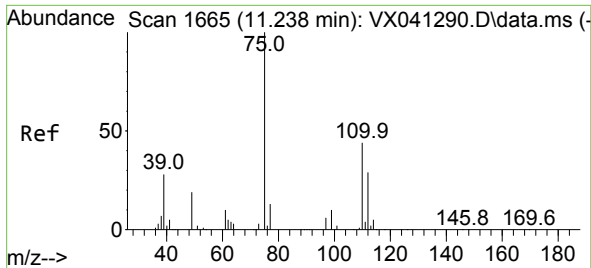


#72
 1,4-Dichlorobenzene-d4
 Concen: 50.000 ug/l
 RT: 12.024 min Scan# 1794
 Delta R.T. 0.000 min
 Lab File: VX041409.D
 Acq: 07 May 2024 16:13



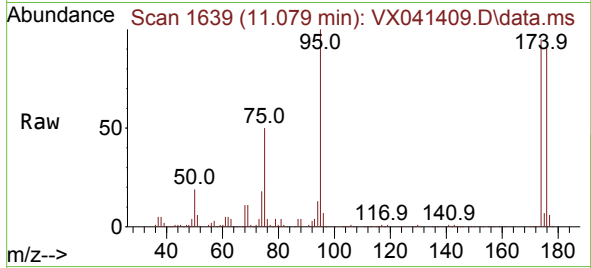
Tgt Ion:152 Resp: 111658
 Ion Ratio Lower Upper
 152 100
 115 54.1 43.3 129.9
 150 156.9 0.0 345.0



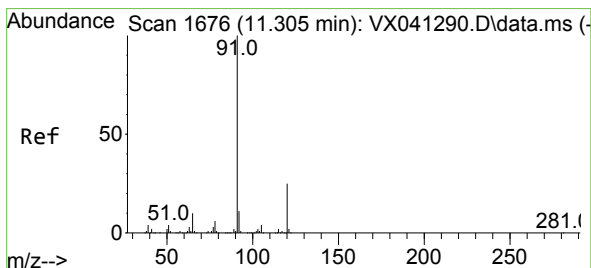
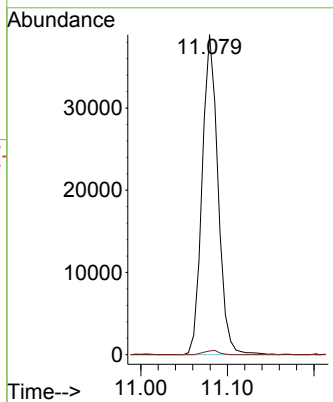
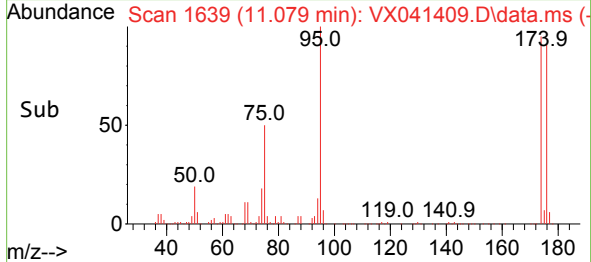


#76
 1,2,3-Trichloropropane
 Concen: 27.205 ug/l
 RT: 11.079 min Scan# 1639
 Delta R.T. -0.158 min
 Lab File: VX041409.D
 Acq: 07 May 2024 16:13

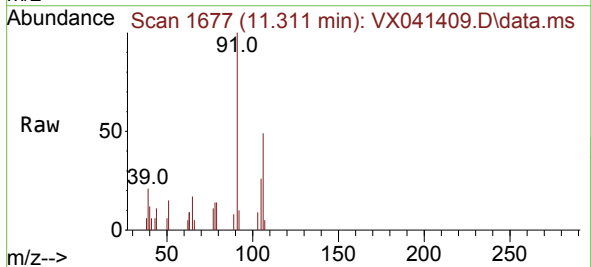
Instrument : MSVOA_X
 ClientSampleId :



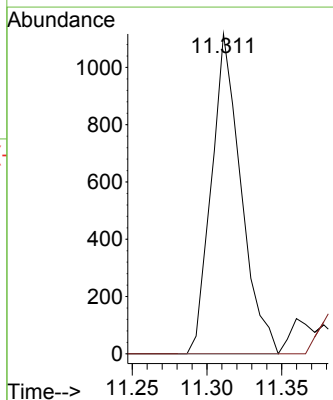
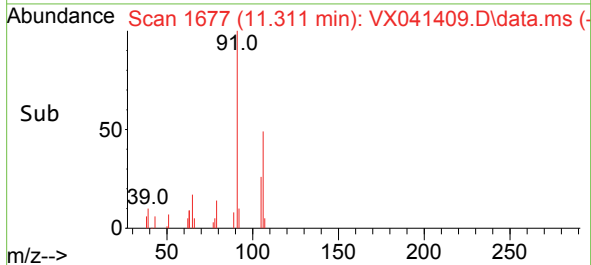
Tgt Ion: 75 Resp: 49504
 Ion Ratio Lower Upper
 75 100
 77 1.3 19.1 57.5#

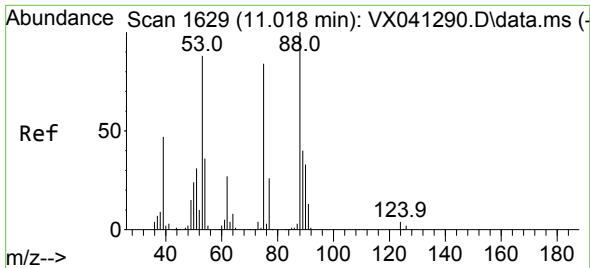


#78
 n-propylbenzene
 Concen: 0.214 ug/l
 RT: 11.311 min Scan# 1677
 Delta R.T. 0.006 min
 Lab File: VX041409.D
 Acq: 07 May 2024 16:13



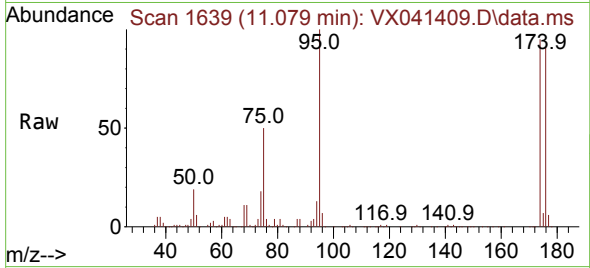
Tgt Ion: 91 Resp: 1535
 Ion Ratio Lower Upper
 91 100
 120 0.0 11.5 34.4#



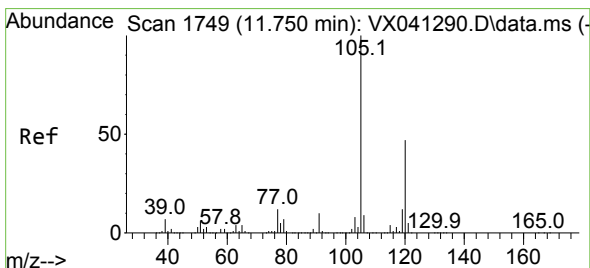
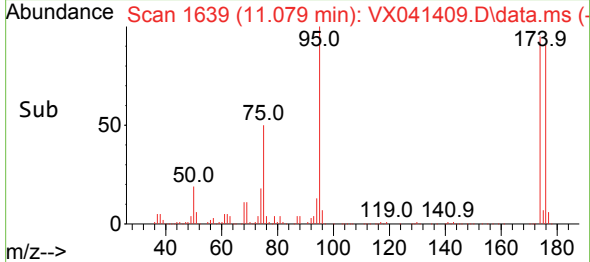
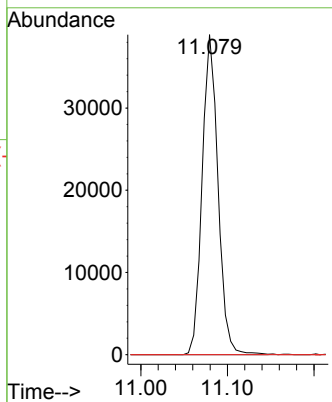


#81
 trans-1,4-Dichloro-2-butene
 Concen: 74.103 ug/l
 RT: 11.079 min Scan# 1
 Delta R.T. 0.061 min
 Lab File: VX041409.D
 Acq: 07 May 2024 16:13

Instrument :
 MSVOA_X
 ClientSampleId :

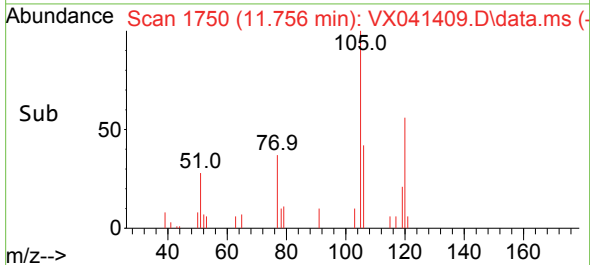
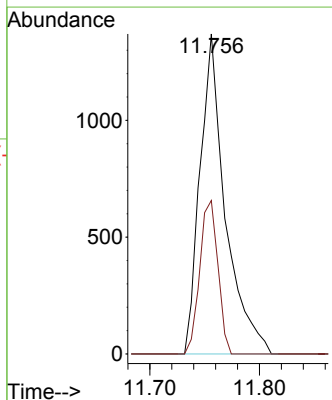
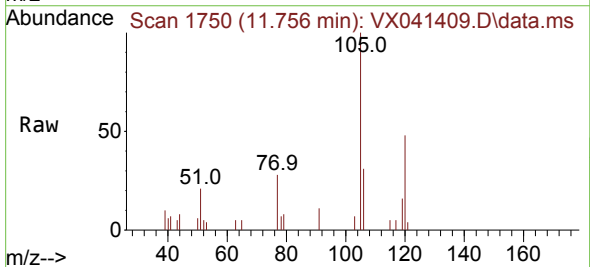


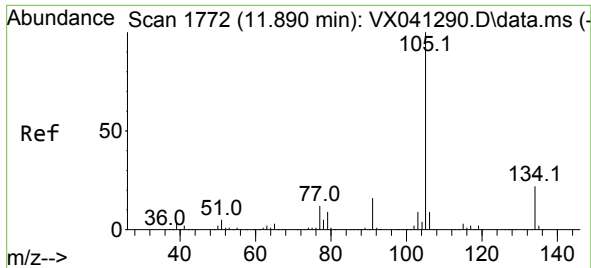
Tgt Ion: 75 Resp: 49504
 Ion Ratio Lower Upper
 75 100
 53 0.0 90.5 135.7#
 89 0.0 36.9 55.3#



#84
 1,2,4-Trimethylbenzene
 Concen: 0.392 ug/l
 RT: 11.756 min Scan# 1750
 Delta R.T. 0.006 min
 Lab File: VX041409.D
 Acq: 07 May 2024 16:13

Tgt Ion: 105 Resp: 2194
 Ion Ratio Lower Upper
 105 100
 120 34.4 21.2 63.6

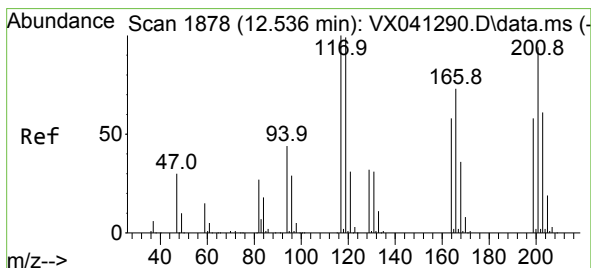
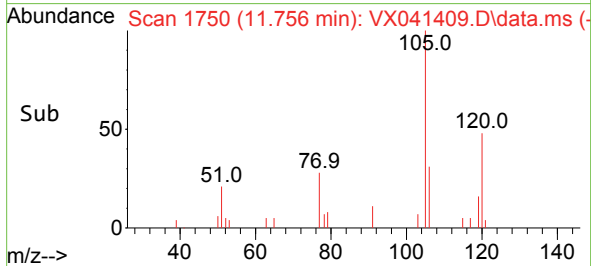
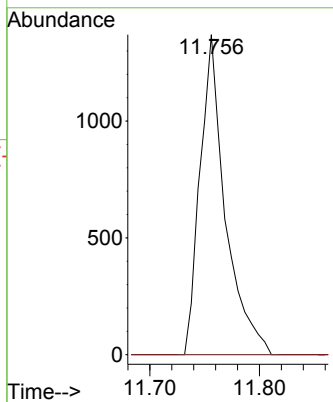
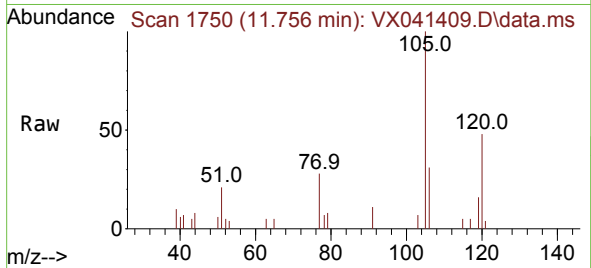




#85
 sec-Butylbenzene
 Concen: 0.322 ug/l
 RT: 11.756 min Scan# 11
 Delta R.T. -0.134 min
 Lab File: VX041409.D
 Acq: 07 May 2024 16:13

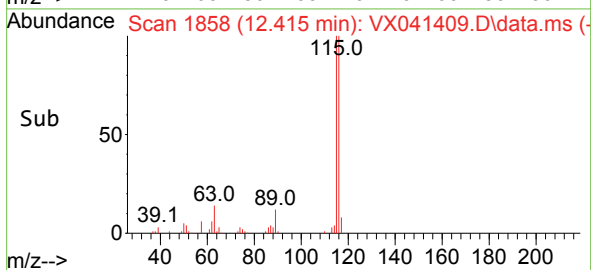
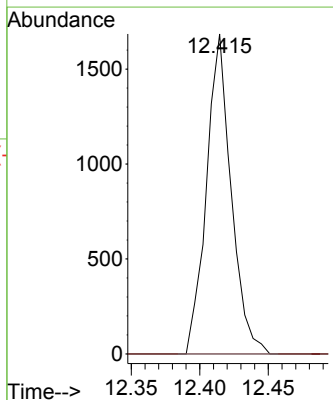
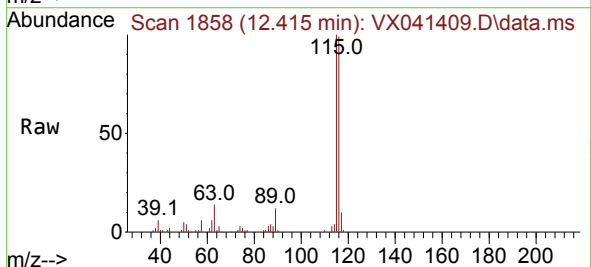
Instrument : MSVOA_X
 ClientSampleId :

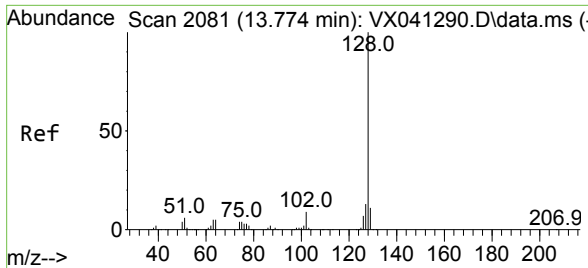
Tgt Ion:105 Resp: 2194
 Ion Ratio Lower Upper
 105 100
 134 0.0 9.8 29.4#



#90
 Hexachloroethane
 Concen: 2.064 ug/l
 RT: 12.415 min Scan# 1858
 Delta R.T. -0.122 min
 Lab File: VX041409.D
 Acq: 07 May 2024 16:13

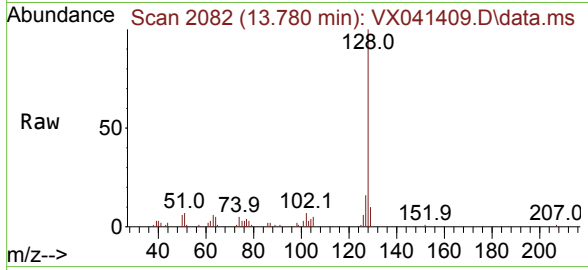
Tgt Ion:117 Resp: 2114
 Ion Ratio Lower Upper
 117 100
 201 0.0 32.9 98.6#





#95
 Naphthalene
 Concen: 1.337 ug/l
 RT: 13.780 min Scan# 2082
 Delta R.T. 0.006 min
 Lab File: VX041409.D
 Acq: 07 May 2024 16:13

Instrument :
 MSVOA_X
 ClientSampleId :



Tgt Ion:128 Resp: 10228

Ion	Ratio	Lower	Upper
128	100		
127	13.6	10.3	15.5
129	9.9	8.8	13.2

