

Data Path : Z:\VOASRV\HPCHEM1\MSVOA X\DATA\VX050820\
 Data File : VX016127.D
 Acq On : 08 May 2020 17:34
 Operator : JC/SP
 Sample : L2552-03
 Misc : 5.0mL/MSVOA X/WATER
 ALS Vial : 20 Sample Multiplier: 1

Instrument :
 MSVOA_X
 ClientSampleId :
 SS052MW354-200507

Integration Parameters: RTEINT.P

Integrator: RTE
 Smoothing : ON Filtering: 5
 Sampling : 1 Min Area: 3 % of largest Peak
 Start Thrs: 0.2 Max Peaks: 100
 Stop Thrs : 0 Peak Location: TOP

If leading or trailing edge < 100 prefer < Baseline drop else tangent >
 Peak separation: 5

Method : Z:\VOASRV\HPCHEM1\MSVOA_X\METHOD\82X050420W.M
 Title : SW846 8260

Signal : TIC

peak #	R.T. min	first scan	max scan	last scan	PK TY	peak height	corr. area	corr. % max.	% of total
1	1.270	27	30	35	rBV	18549	18248	1.23%	0.208%
2	2.575	237	244	252	rBV	12541	23869	1.60%	0.272%
3	3.172	332	342	355	rVB	59095	143473	9.65%	1.634%
4	4.568	558	571	582	rBV	72441	202402	13.61%	2.305%
5	5.471	707	719	734	rBV2	160670	454367	30.55%	5.174%
6	5.629	734	745	758	rVV	281939	792222	53.27%	9.021%
7	6.038	798	812	825	rBV	181967	479913	32.27%	5.465%
8	6.836	932	943	959	rBV	451127	1065128	71.62%	12.128%
9	7.190	993	1001	1013	rVB	82901	179990	12.10%	2.050%
10	8.696	1240	1248	1258	rBV	937474	1487247	100.00%	16.935%
11	9.317	1344	1350	1357	rBV	44219	64684	4.35%	0.737%
12	10.098	1472	1478	1492	rBV	1017598	1351661	90.88%	15.391%
13	11.122	1640	1646	1656	rBV	888556	1100900	74.02%	12.536%
14	12.061	1795	1800	1807	rBV	1137268	1418029	95.35%	16.147%

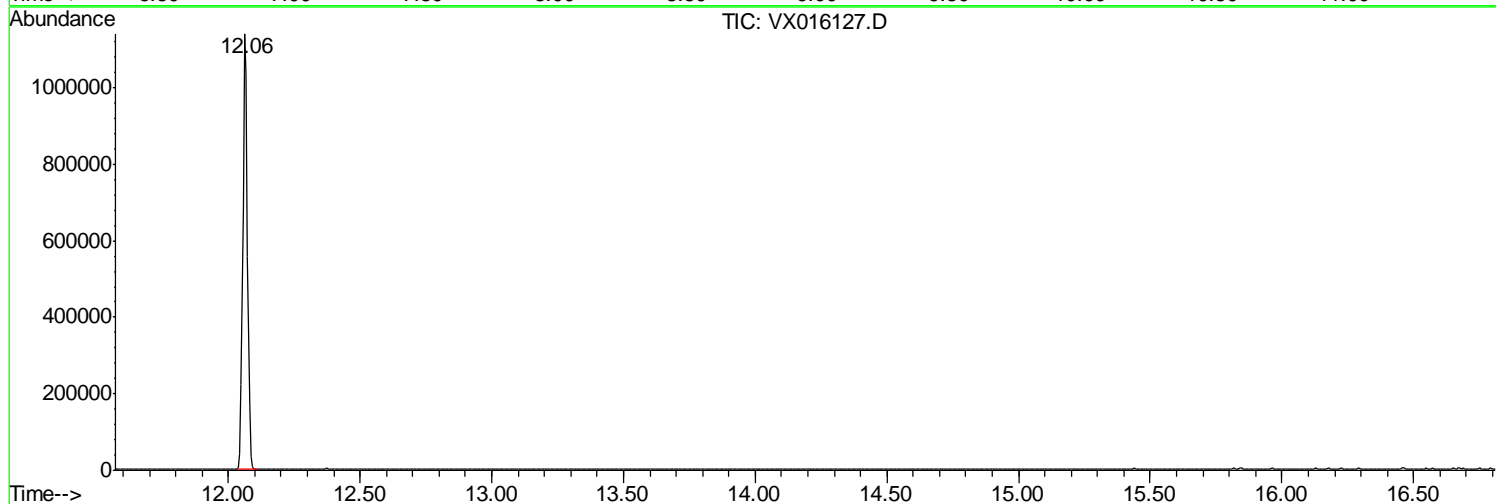
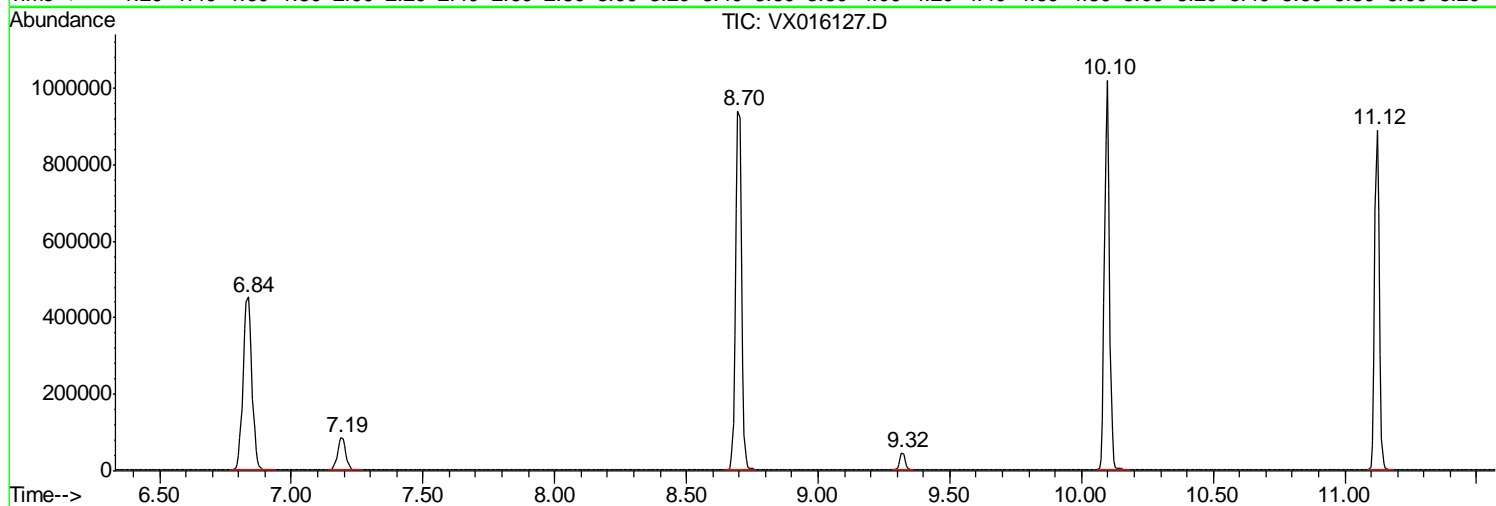
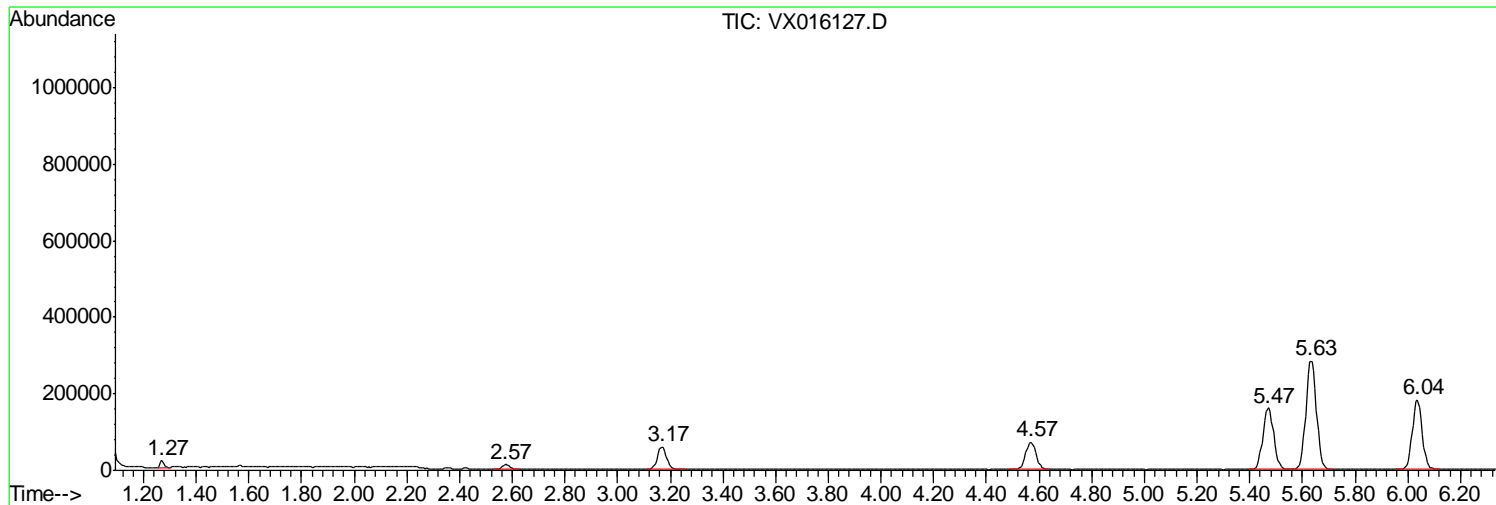
Sum of corrected areas: 8782133

Data Path : Z:\VOASRV\HPCHEM1\MSVOA X\DATA\VX050820\
Data File : VX016127.D
Acq On : 08 May 2020 17:34
Operator : JC/SP
Sample : L2552-03
Misc : 5.0mL/MSVOA X/WATER
ALS Vial : 20 Sample Multiplier: 1

Instrument :
MSVOA_X
ClientSampled :
SS052MW354-200507

Quant Method : Z:\VOASRV\HPCHEM1\MSVOA_X\METHOD\82X050420W.M
Quant Title : SW846 8260

TIC Library : C:\DATABASE\NIST11.L
TIC Integration Parameters: LSCINT.P



Data Path : Z:\VOASRV\HPCHEM1\MSVOA_X\DATA\VX050820\
Data File : VX016127.D
Acq On : 08 May 2020 17:34
Operator : JC/SP
Sample : L2552-03
Misc : 5.0mL/MSVOA_X/WATER
ALS Vial : 20 Sample Multiplier: 1

Instrument :
MSVOA_X
ClientSampleId :
SS052MW354-200507

Quant Method : Z:\VOASRV\HPCHEM1\MSVOA_X\METHOD\82X050420W.M
Quant Title : SW846 8260

TIC Library : C:\DATABASE\NIST11.L
TIC Integration Parameters: LSCINT.P

No Library Search Compounds Detected

Data Path : Z:\VOASRV\HPCHEM1\MSVOA_X\DATA\VX050820\
Data File : VX016127.D
Acq On : 08 May 2020 17:34
Operator : JC/SP
Sample : L2552-03
Misc : 5.0mL/MSVOA_X/WATER
ALS Vial : 20 Sample Multiplier: 1

Instrument :
MSVOA_X
ClientSampleId :
SS052MW354-200507

Quant Method : Z:\VOASRV\HPCHEM1\MSVOA_X\METHOD\82X050420W.M
Quant Title : SW846 8260

TIC Library : C:\DATABASE\NIST11.L
TIC Integration Parameters: LSCINT.P

TIC Top Hit name	RT	EstConc	Units	Response	--Internal Standard--			
					#	RT	Resp	Conc
