

Data Path : Z:\VOASRV\HPCHEM1\MSVOA X\DATA\VX050919\
 Data File : VX009436.D
 Acq On : 09 May 2019 18:31
 Operator : JC/SP
 Sample : K2786-05
 Misc : 5.0mL/MSVOA X/WATER
 ALS Vial : 22 Sample Multiplier: 1

Instrument :
 MSVOA_X
 ClientSampleId :
 BP-VPB202-GW-198-200

Integration Parameters: RTEINT.P

Integrator: RTE
 Smoothing : ON Filtering: 5
 Sampling : 1 Min Area: 3 % of largest Peak
 Start Thrs: 0.2 Max Peaks: 100
 Stop Thrs : 0 Peak Location: TOP

If leading or trailing edge < 100 prefer < Baseline drop else tangent >
 Peak separation: 5

Method : Z:\VOASRV\HPCHEM1\MSVOA_X\METHOD\82X042919W.M
 Title : SW846 8260

Signal : TIC

peak #	R.T. min	first scan	max scan	last scan	PK TY	peak height	corr. area	corr. % max.	% of total
1	1.489	49	55	62	rBV	23371	28836	2.89%	0.494%
2	1.611	65	75	80	rBV9	5285	12107	1.21%	0.208%
3	1.934	123	128	137	rVB	102999	154390	15.47%	2.647%
4	2.373	191	200	207	rBV	45701	77653	7.78%	1.332%
5	2.440	207	211	219	rVB2	7385	13373	1.34%	0.229%
6	2.605	228	238	245	rBV2	7389	15046	1.51%	0.258%
7	3.196	324	335	343	rVB2	3880	10257	1.03%	0.176%
8	3.702	407	418	426	rBV2	8520	22571	2.26%	0.387%
9	5.208	657	665	677	rVB3	8443	25444	2.55%	0.436%
10	5.501	702	713	726	rBV2	111792	325154	32.58%	5.576%
11	5.659	728	739	754	rVB	187908	530001	53.10%	9.089%
12	6.062	795	805	818	rBV	129806	340895	34.16%	5.846%
13	6.860	923	936	955	rBV	298757	716889	71.83%	12.293%
14	7.214	987	994	1007	rVB	37757	82464	8.26%	1.414%
15	7.659	1062	1067	1077	rBV2	4535	10361	1.04%	0.178%
16	8.714	1232	1240	1256	rBV	644859	998052	100.00%	17.115%
17	9.335	1336	1342	1351	rVB	126070	185905	18.63%	3.188%
18	9.579	1377	1382	1393	rBV2	18461	28918	2.90%	0.496%
19	10.110	1463	1469	1479	rBV	605183	814870	81.65%	13.973%
20	10.908	1595	1600	1609	rBV2	13778	18830	1.89%	0.323%
21	11.134	1631	1637	1649	rBV	476135	612822	61.40%	10.509%
22	11.981	1772	1776	1781	rBV	19537	24424	2.45%	0.419%
23	12.079	1786	1792	1802	rVV	552041	717406	71.88%	12.302%
24	12.268	1816	1823	1836	rBV3	5007	10408	1.04%	0.178%
25	12.908	1922	1928	1936	rBV	44108	54464	5.46%	0.934%

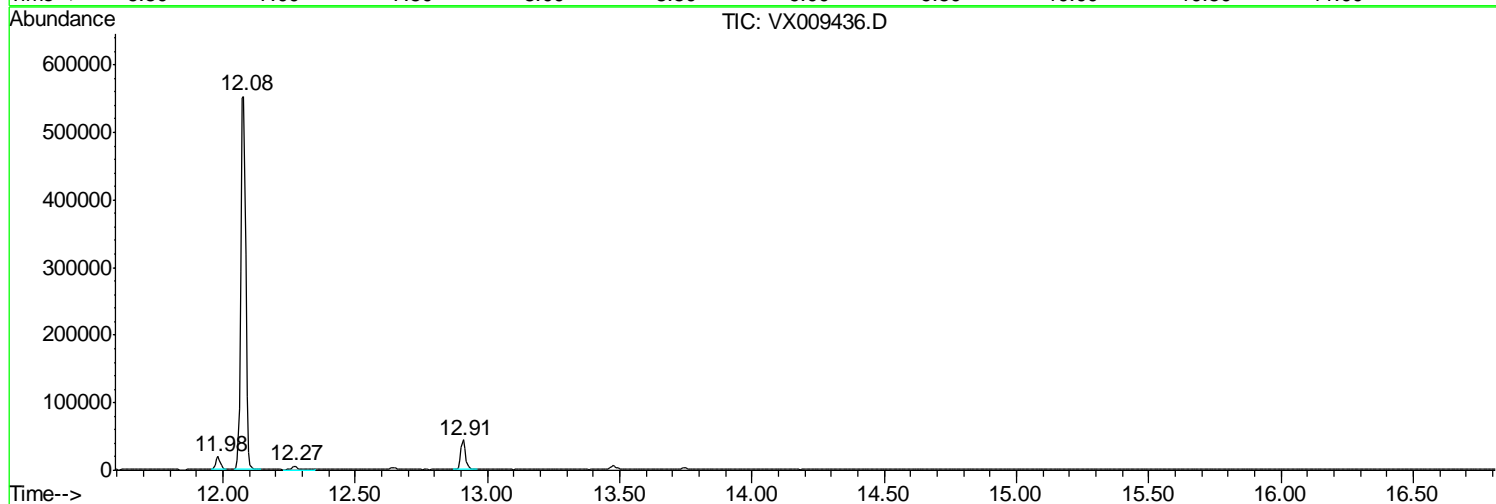
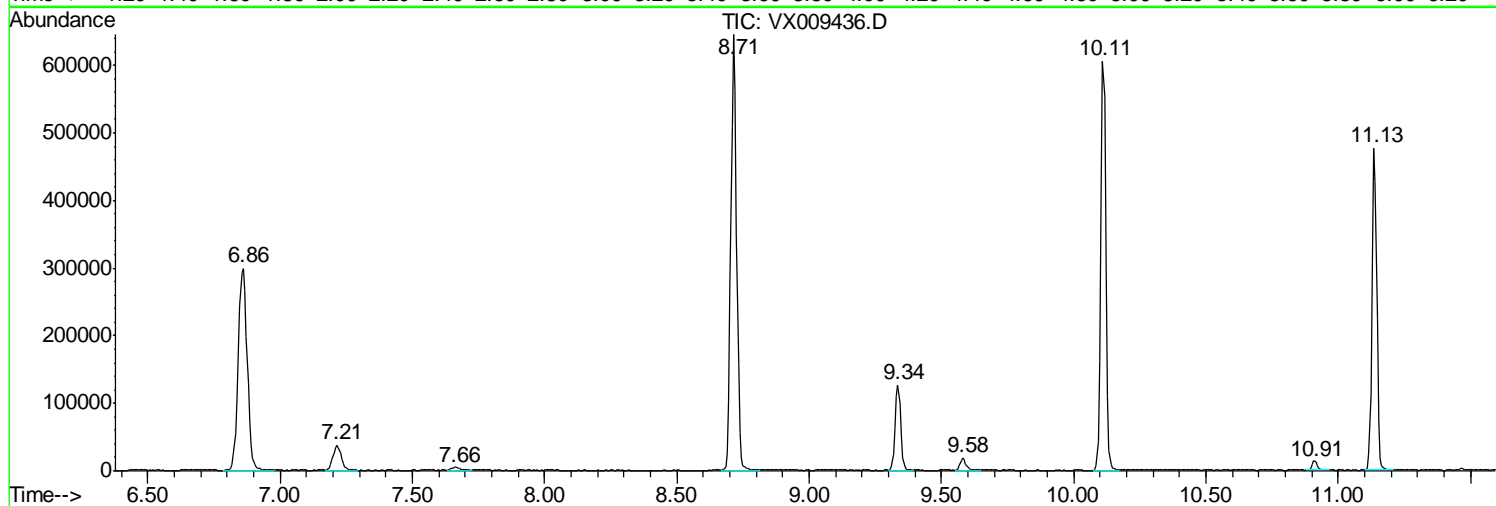
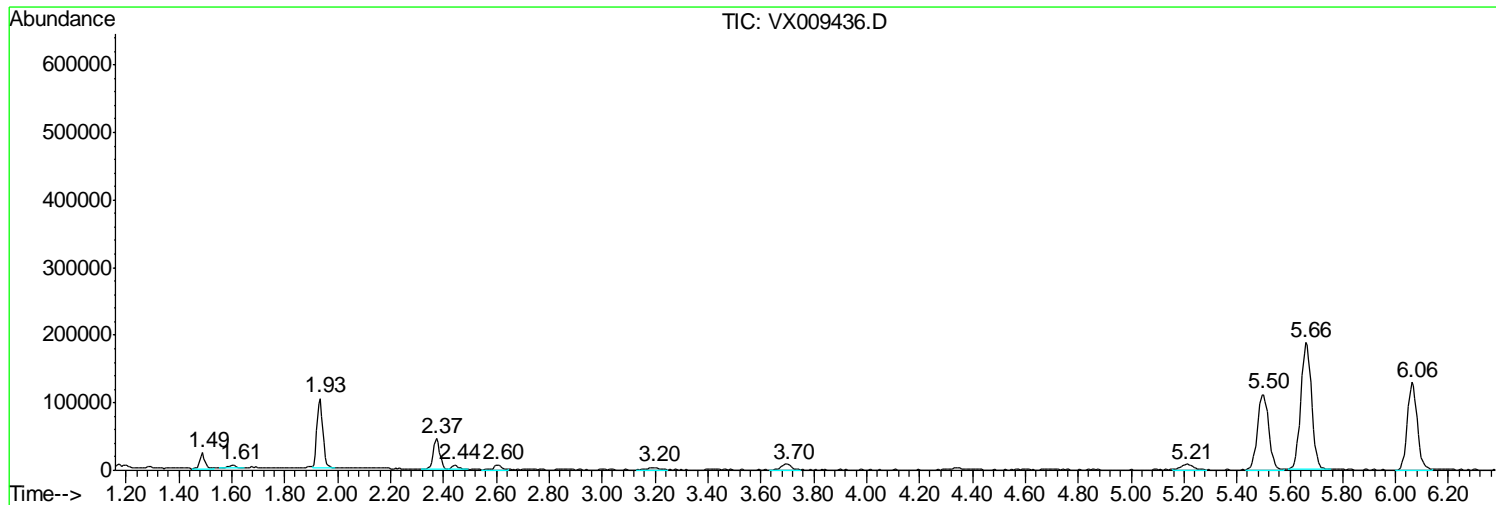
Sum of corrected areas: 5831540

Data Path : Z:\VOASRV\HPCHEM1\MSVOA X\DATA\VX050919\
Data File : VX009436.D
Acq On : 09 May 2019 18:31
Operator : JC/SP
Sample : K2786-05
Misc : 5.0mL/MSVOA X/WATER
ALS Vial : 22 Sample Multiplier: 1

Instrument :
MSVOA_X
ClientSampled :
BP-VPB202-GW-198-200

Quant Method : Z:\VOASRV\HPCHEM1\MSVOA_X\METHOD\82X042919W.M
Quant Title : SW846 8260

TIC Library : C:\DATABASE\NIST11.L
TIC Integration Parameters: LSCINT.P



Data Path : Z:\VOASRV\HPCHEM1\MSVOA_X\DATA\VX050919\
Data File : VX009436.D
Acq On : 09 May 2019 18:31
Operator : JC/SP
Sample : K2786-05
Misc : 5.0mL/MSVOA_X/WATER
ALS Vial : 22 Sample Multiplier: 1

Instrument :
MSVOA_X
ClientSampleId :
BP-VPB202-GW-198-200

Quant Method : Z:\VOASRV\HPCHEM1\MSVOA_X\METHOD\82X042919W.M
Quant Title : SW846 8260

TIC Library : C:\DATABASE\NIST11.L
TIC Integration Parameters: LSCINT.P

No Library Search Compounds Detected

Data Path : Z:\VOASRV\HPCHEM1\MSVOA_X\DATA\VX050919\
Data File : VX009436.D
Acq On : 09 May 2019 18:31
Operator : JC/SP
Sample : K2786-05
Misc : 5.0mL/MSVOA_X/WATER
ALS Vial : 22 Sample Multiplier: 1

Instrument :
MSVOA_X
ClientSampleId :
BP-VPB202-GW-198-200

Quant Method : Z:\VOASRV\HPCHEM1\MSVOA_X\METHOD\82X042919W.M
Quant Title : SW846 8260

TIC Library : C:\DATABASE\NIST11.L
TIC Integration Parameters: LSCINT.P

TIC Top Hit name	RT	EstConc	Units	Response	--Internal Standard--			
					#	RT	Resp	Conc
