

Data Path : Z:\voasrv\HPCHEM1\MSVOA_X\Data\VX050925\
 Data File : VX046115.D
 Acq On : 09 May 2025 15:14
 Operator : JC/MD
 Sample : Q1993-05
 Misc : 5.0mL/MSVOA_X/WATER
 ALS Vial : 15 Sample Multiplier: 1

Instrument :
 MSVOA_X
 ClientSampleId :
 MW-2-20250508

Quant Time: May 09 23:16:09 2025
 Quant Method : Z:\voasrv\HPCHEM1\MSVOA_X\Method\82X050525W.M
 Quant Title : SW846 8260
 QLast Update : Tue May 06 07:12:22 2025
 Response via : Initial Calibration

Compound	R.T.	QIon	Response	Conc	Units	Dev(Min)

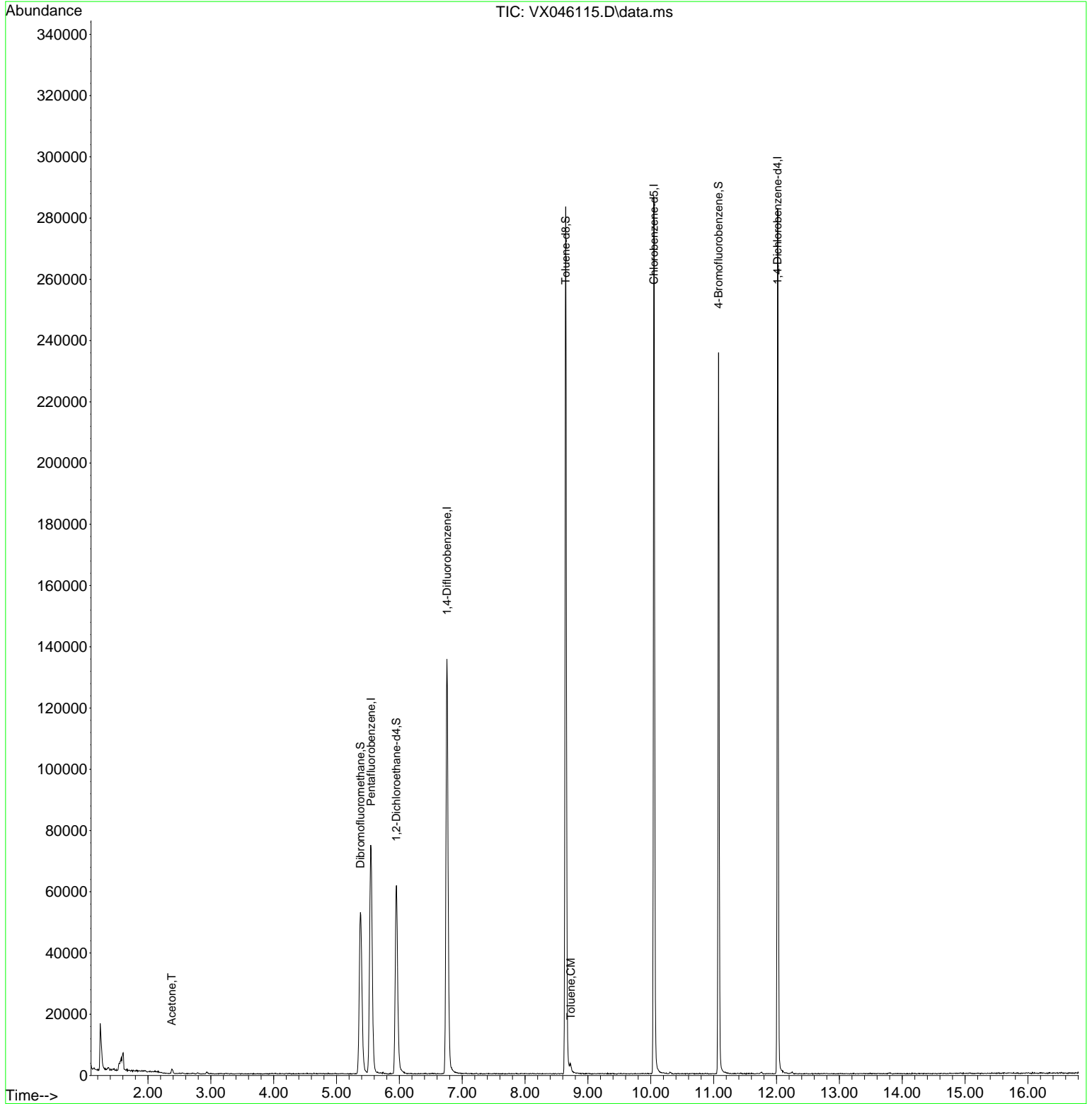
Internal Standards						
1) Pentafluorobenzene	5.550	168	63587	50.000	ug/l	0.00
34) 1,4-Difluorobenzene	6.757	114	130133	50.000	ug/l	0.00
63) Chlorobenzene-d5	10.049	117	120308	50.000	ug/l	0.00
72) 1,4-Dichlorobenzene-d4	12.018	152	51775	50.000	ug/l	0.00
System Monitoring Compounds						
33) 1,2-Dichloroethane-d4	5.952	65	64369	54.298	ug/l	0.00
Spiked Amount	50.000	Range	74 - 125	Recovery	=	108.600%
35) Dibromofluoromethane	5.379	113	46975	50.128	ug/l	0.00
Spiked Amount	50.000	Range	75 - 124	Recovery	=	100.260%
50) Toluene-d8	8.647	98	159259	49.102	ug/l	0.00
Spiked Amount	50.000	Range	86 - 113	Recovery	=	98.200%
62) 4-Bromofluorobenzene	11.079	95	60220	48.403	ug/l	0.00
Spiked Amount	50.000	Range	77 - 121	Recovery	=	96.800%
Target Compounds						
					Qvalue	
16) Acetone	2.379	43	1485	3.124	ug/l #	86
52) Toluene	8.726	92	1088	0.481	ug/l	90

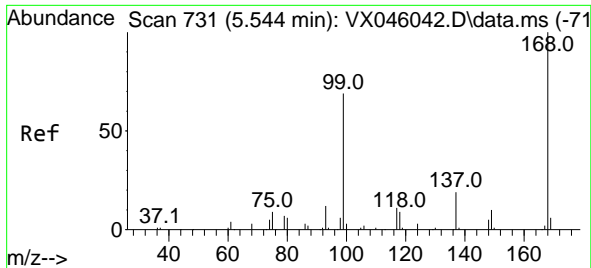
(#) = qualifier out of range (m) = manual integration (+) = signals summed

Data Path : Z:\voasrv\HPCHEM1\MSVOA_X\Data\VX050925\
 Data File : VX046115.D
 Acq On : 09 May 2025 15:14
 Operator : JC/MD
 Sample : Q1993-05
 Misc : 5.0mL/MSVOA_X/WATER
 ALS Vial : 15 Sample Multiplier: 1

Instrument :
 MSVOA_X
ClientSampleId :
 MW-2-20250508

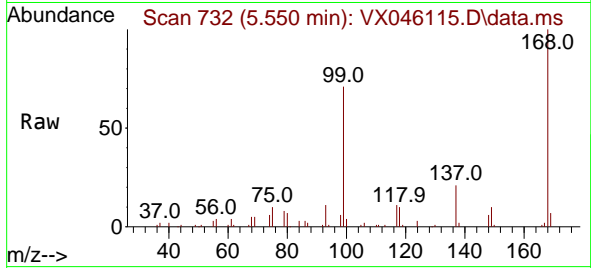
Quant Time: May 09 23:16:09 2025
 Quant Method : Z:\voasrv\HPCHEM1\MSVOA_X\Method\82X050525W.M
 Quant Title : SW846 8260
 QLast Update : Tue May 06 07:12:22 2025
 Response via : Initial Calibration



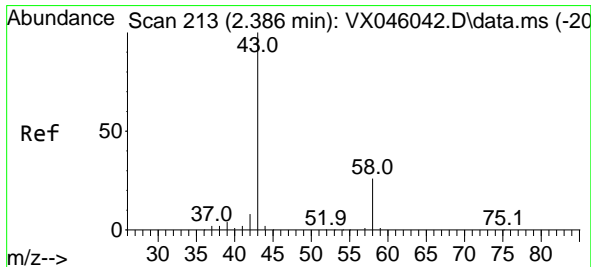
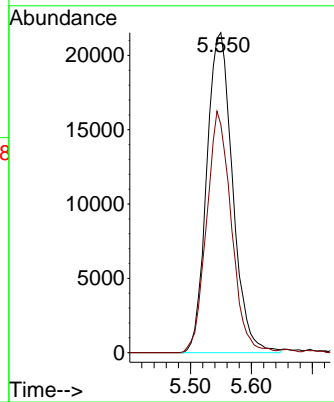
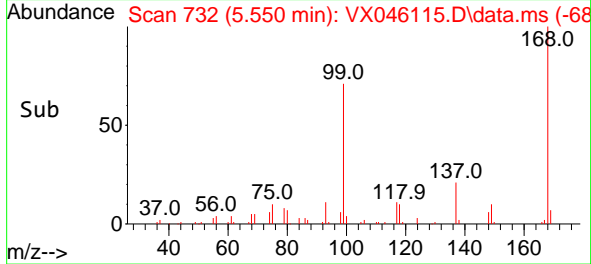


#1
 Pentafluorobenzene
 Concen: 50.000 ug/l
 RT: 5.550 min Scan# 71
 Delta R.T. 0.006 min
 Lab File: VX046115.D
 Acq: 09 May 2025 15:14

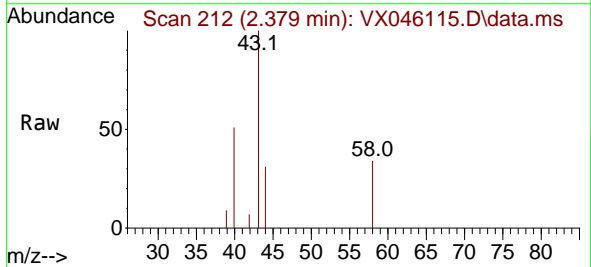
Instrument :
 MSVOA_X
 ClientSampleId :
 MW-2-20250508



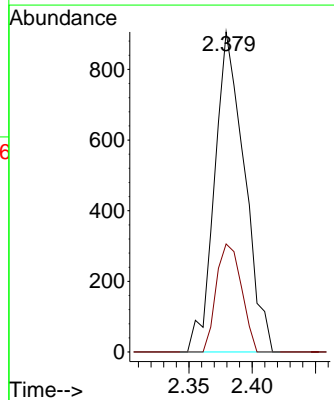
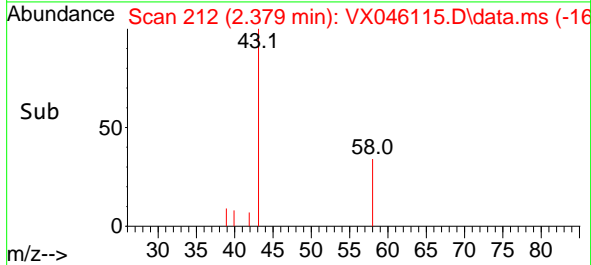
Tgt Ion:168 Resp: 63587
 Ion Ratio Lower Upper
 168 100
 99 71.3 54.9 82.3

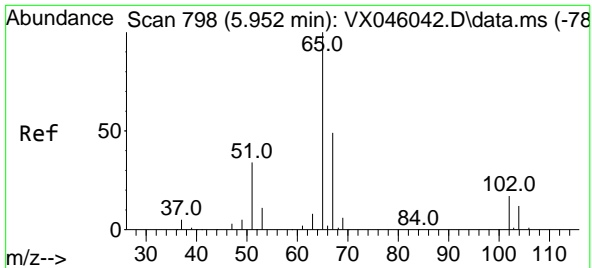


#16
 Acetone
 Concen: 3.124 ug/l
 RT: 2.379 min Scan# 212
 Delta R.T. -0.006 min
 Lab File: VX046115.D
 Acq: 09 May 2025 15:14



Tgt Ion: 43 Resp: 1485
 Ion Ratio Lower Upper
 43 100
 58 33.8 21.2 31.8#

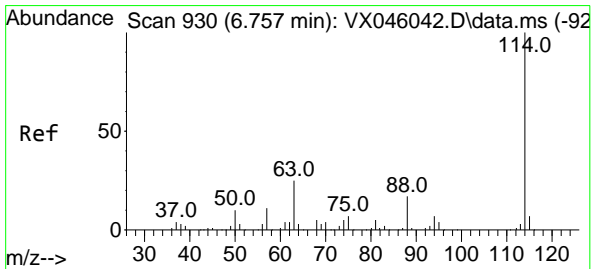
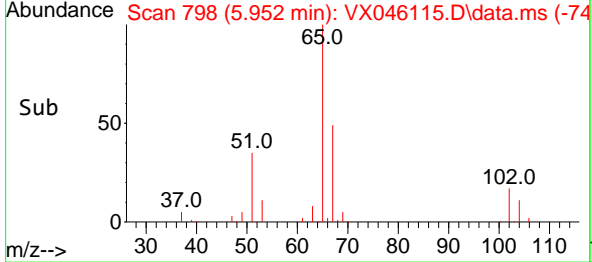
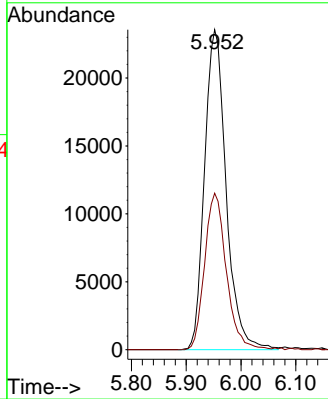
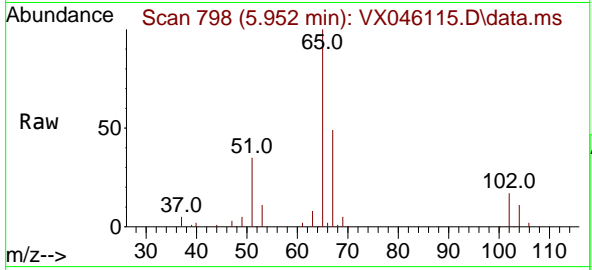




#33
 1,2-Dichloroethane-d4
 Concen: 54.298 ug/l
 RT: 5.952 min Scan# 798
 Delta R.T. -0.000 min
 Lab File: VX046115.D
 Acq: 09 May 2025 15:14

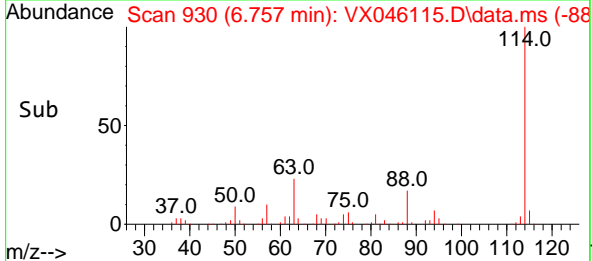
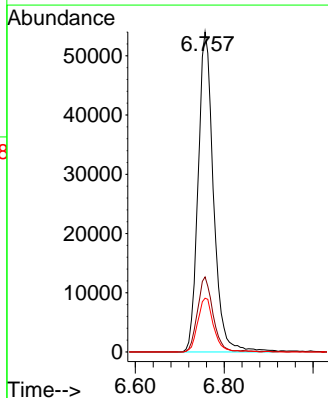
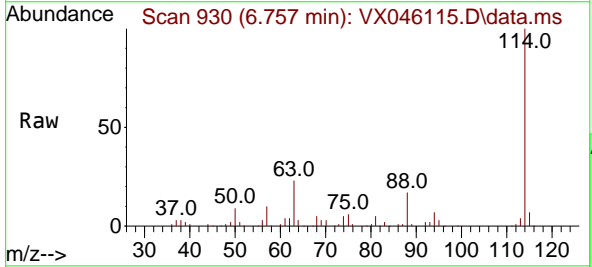
Instrument : MSVOA_X
 ClientSampleId : MW-2-20250508

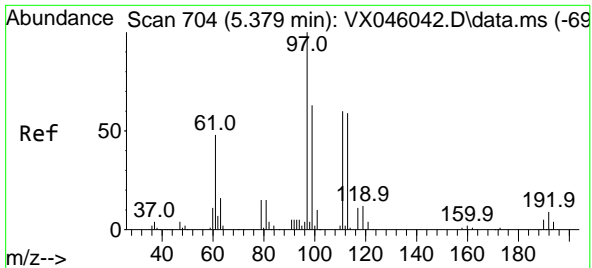
Tgt Ion: 65 Resp: 64369
 Ion Ratio Lower Upper
 65 100
 67 49.0 0.0 99.0



#34
 1,4-Difluorobenzene
 Concen: 50.000 ug/l
 RT: 6.757 min Scan# 930
 Delta R.T. -0.000 min
 Lab File: VX046115.D
 Acq: 09 May 2025 15:14

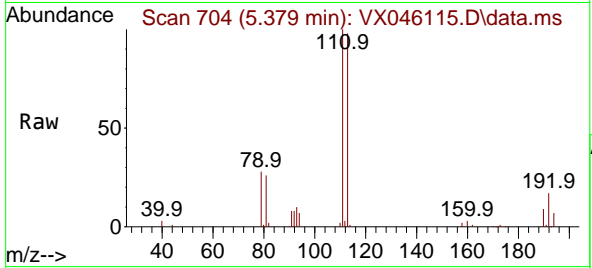
Tgt Ion: 114 Resp: 130133
 Ion Ratio Lower Upper
 114 100
 63 23.5 0.0 49.2
 88 16.8 0.0 33.6



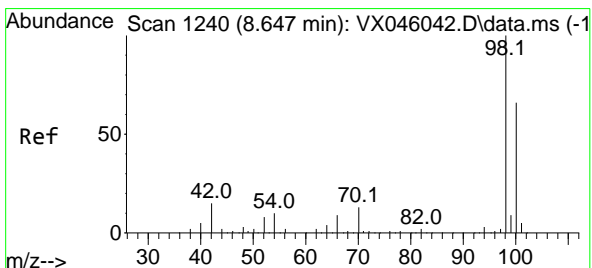
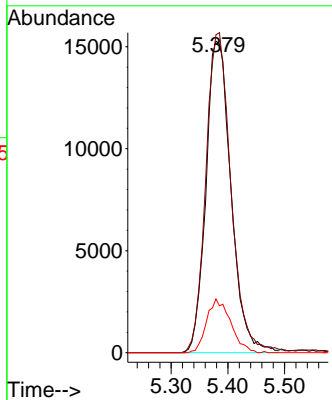
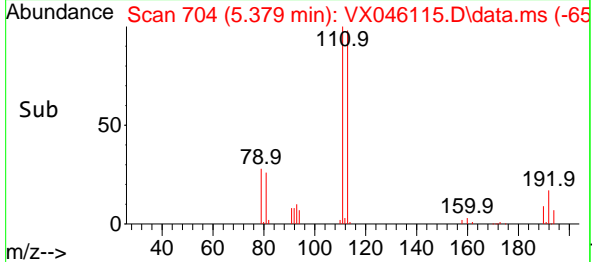


#35
 Dibromofluoromethane
 Concen: 50.128 ug/l
 RT: 5.379 min Scan# 704
 Delta R.T. -0.000 min
 Lab File: VX046115.D
 Acq: 09 May 2025 15:14

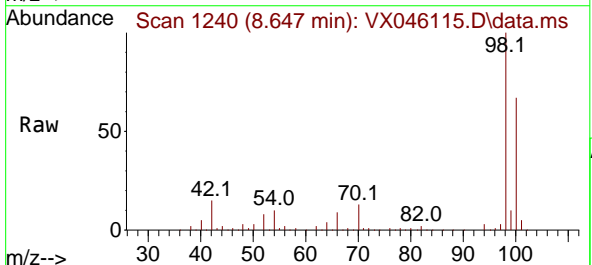
Instrument : MSVOA_X
 ClientSampleId : MW-2-20250508



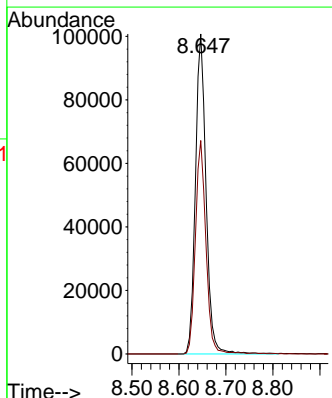
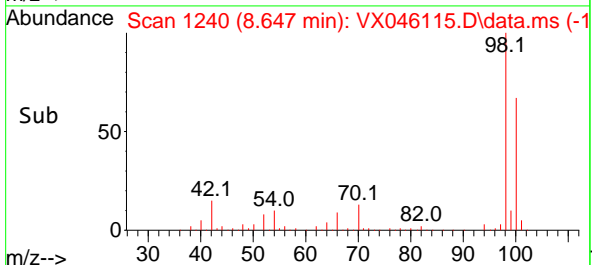
Tgt Ion:113 Resp: 46975
 Ion Ratio Lower Upper
 113 100
 111 103.3 83.1 124.7
 192 16.5 13.3 19.9

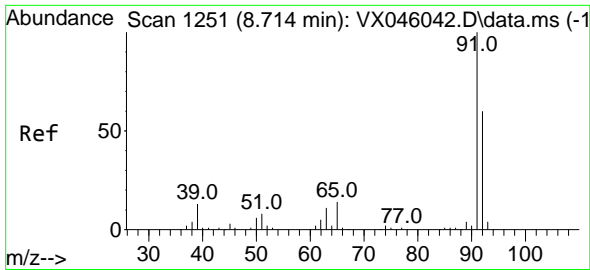


#50
 Toluene-d8
 Concen: 49.102 ug/l
 RT: 8.647 min Scan# 1240
 Delta R.T. -0.000 min
 Lab File: VX046115.D
 Acq: 09 May 2025 15:14



Tgt Ion: 98 Resp: 159259
 Ion Ratio Lower Upper
 98 100
 100 65.9 53.5 80.3

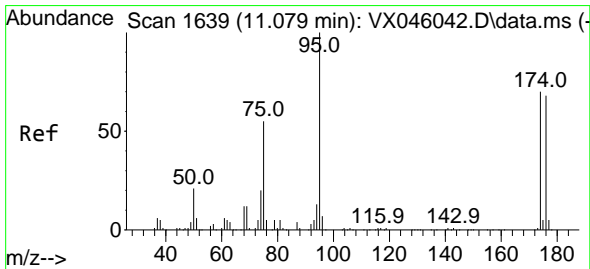
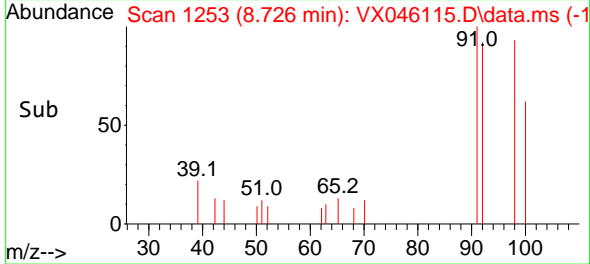
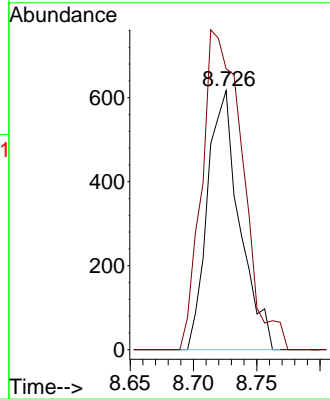
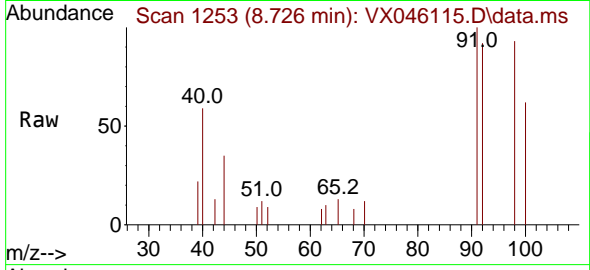




#52
 Toluene
 Concen: 0.481 ug/l
 RT: 8.726 min Scan# 11
 Delta R.T. 0.012 min
 Lab File: VX046115.D
 Acq: 09 May 2025 15:14

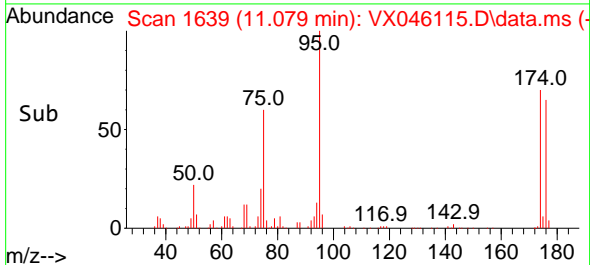
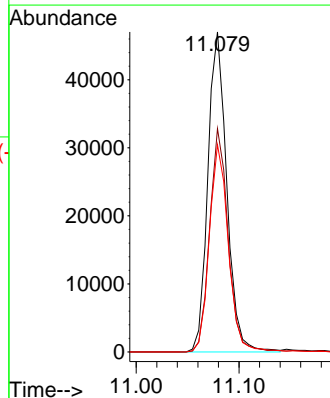
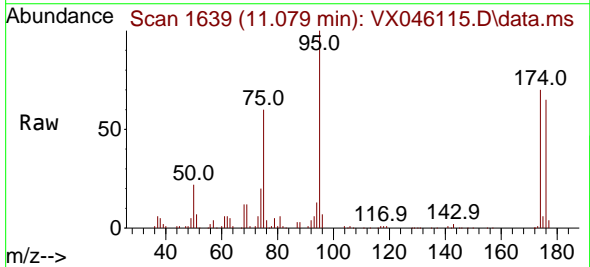
Instrument :
 MSVOA_X
 ClientSampleId :
 MW-2-20250508

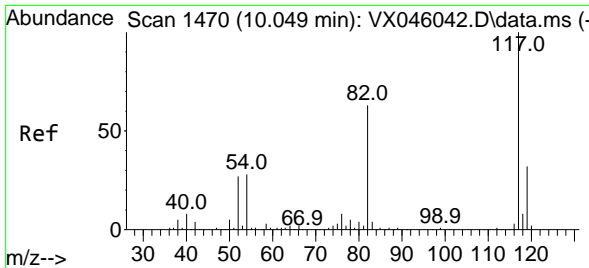
Tgt Ion: 92 Resp: 1088
 Ion Ratio Lower Upper
 92 100
 91 156.9 136.6 205.0



#62
 4-Bromofluorobenzene
 Concen: 48.403 ug/l
 RT: 11.079 min Scan# 1639
 Delta R.T. -0.000 min
 Lab File: VX046115.D
 Acq: 09 May 2025 15:14

Tgt Ion: 95 Resp: 60220
 Ion Ratio Lower Upper
 95 100
 174 68.5 0.0 135.8
 176 65.5 0.0 131.4



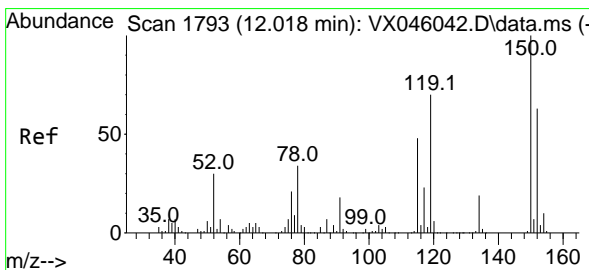
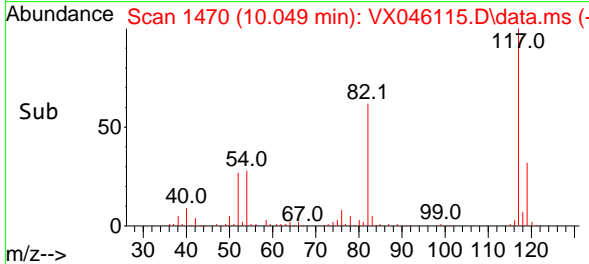
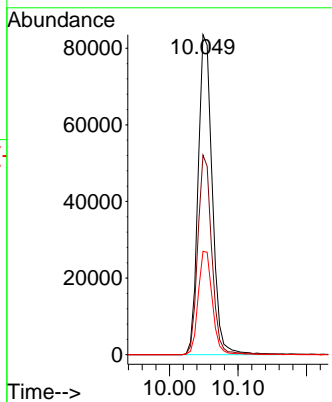
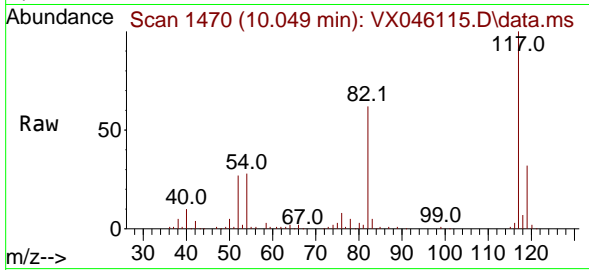


#63
 Chlorobenzene-d5
 Concen: 50.000 ug/l
 RT: 10.049 min Scan# 1470
 Delta R.T. -0.000 min
 Lab File: VX046115.D
 Acq: 09 May 2025 15:14

Instrument : MSVOA_X
 ClientSampleId : MW-2-20250508

Tgt Ion:117 Resp: 120308

Ion	Ratio	Lower	Upper
117	100		
82	62.3	50.6	76.0
119	32.3	25.8	38.6



#72
 1,4-Dichlorobenzene-d4
 Concen: 50.000 ug/l
 RT: 12.018 min Scan# 1793
 Delta R.T. -0.000 min
 Lab File: VX046115.D
 Acq: 09 May 2025 15:14

Tgt Ion:152 Resp: 51775

Ion	Ratio	Lower	Upper
152	100		
115	64.3	46.9	140.7
150	157.6	0.0	351.0

