

Data Path : Z:\VOASRV\HPCHEM1\MSVOA X\DATA\VX051019\
 Data File : VX009488.D
 Acq On : 10 May 2019 18:06
 Operator : JC/SP
 Sample : K2748-08
 Misc : 5.0mL/MSVOA X/WATER
 ALS Vial : 19 Sample Multiplier: 1

Instrument :
 MSVOA_X
 ClientSampled :
 FB-5719

Quant Time: May 11 03:29:54 2019
 Quant Method : Z:\VOASRV\HPCHEM1\MSVOA_X\METHOD\82X042919W.M
 Quant Title : SW846 8260
 QLast Update : Thu May 09 07:31:15 2019
 Response via : Initial Calibration

| Internal Standards | R.T. | QIon | Response | Conc | Units | Dev(Min) |
|----------------------------|-------|------|----------|-------|-------|----------|
| 1) Pentafluorobenzene | 5.66 | 168 | 178782 | 50.00 | ug/l | 0.00 |
| 34) 1,4-Difluorobenzene | 6.86 | 114 | 284715 | 50.00 | ug/l | 0.00 |
| 63) Chlorobenzene-d5 | 10.11 | 117 | 248775 | 50.00 | ug/l | 0.00 |
| 72) 1,4-Dichlorobenzene-d4 | 12.08 | 152 | 106179 | 50.00 | ug/l | 0.00 |

| System Monitoring Compounds | R.T. | QIon | Response | Conc | Units | Dev(Min) |
|-----------------------------|-------|------|----------|--------|-------|----------|
| 33) 1,2-Dichloroethane-d4 | 6.06 | 65 | 117903 | 48.31 | ug/l | 0.00 |
| Spiked Amount | | | | 50.000 | | |
| Recovery | | | | | | 96.62% |
| 35) Dibromofluoromethane | 5.50 | 113 | 87843 | 49.08 | ug/l | 0.00 |
| Spiked Amount | | | | 50.000 | | |
| Recovery | | | | | | 98.16% |
| 50) Toluene-d8 | 8.71 | 98 | 355476 | 49.19 | ug/l | 0.00 |
| Spiked Amount | | | | 50.000 | | |
| Recovery | | | | | | 98.38% |
| 62) 4-Bromofluorobenzene | 11.13 | 95 | 117329 | 44.69 | ug/l | 0.00 |
| Spiked Amount | | | | 50.000 | | |
| Recovery | | | | | | 89.38% |

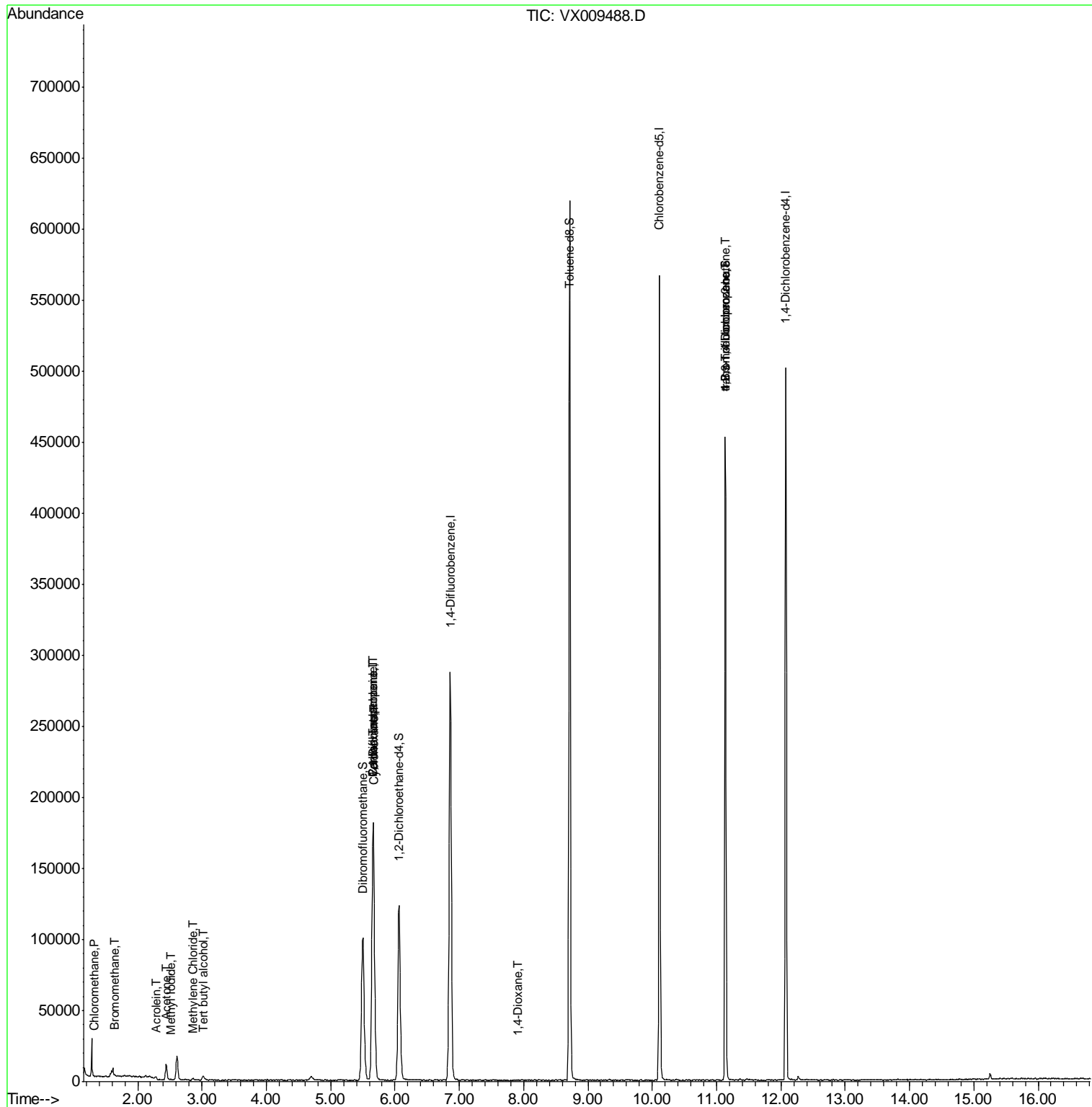
| Target Compounds | R.T. | QIon | Response | Conc | Units | Qvalue |
|--------------------------------|-------|------|----------|-----------|--------|--------|
| 3) Chloromethane | 1.32 | 50 | 526 | 0.234 | ug/l # | 69 |
| 5) Bromomethane | 1.64 | 94 | 280 | 0.213 | ug/l | 98 |
| 10) Methyl Iodide | 2.52 | 142 | 350 | 4.757 | ug/l # | 88 |
| 11) Tert butyl alcohol | 3.03 | 59 | 2409 | 4.264 | ug/l # | 73 |
| 13) Acrolein | 2.29 | 56 | 122 | 0.238 | ug/l # | 1 |
| 16) Acetone | 2.44 | 43 | 11833 | 9.029 | ug/l | 100 |
| 20) Methylene Chloride | 2.86 | 84 | 600 | 0.283 | ug/l | 83 |
| 28) Bromochloromethane | 5.06 | 49 | 106 | Below Cal | # | 20 |
| 31) Cyclohexane | 5.67 | 56 | 3961 | 1.098 | ug/l # | 1 |
| 36) 1,1-Dichloropropene | 5.67 | 75 | 13719 | 5.185 | ug/l # | 50 |
| 38) Carbon Tetrachloride | 5.66 | 117 | 17008 | 7.075 | ug/l # | 15 |
| 49) 1,4-Dioxane | 7.91 | 88 | 42 | 0.708 | ug/l # | 1 |
| 76) 1,2,3-Trichloropropane | 11.13 | 75 | 59651 | 24.219 | ug/l # | 34 |
| 81) trans-1,4-Dichloro-2-buten | 11.13 | 75 | 59651 | 61.968 | ug/l # | 10 |

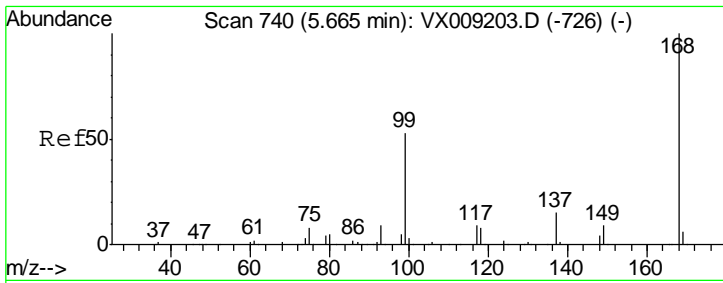
(#) = qualifier out of range (m) = manual integration (+) = signals summed

Data Path : Z:\VOASRV\HPCHEM1\MSVOA X\DATA\VX051019\
 Data File : VX009488.D
 Acq On : 10 May 2019 18:06
 Operator : JC/SP
 Sample : K2748-08
 Misc : 5.0mL/MSVOA X/WATER
 ALS Vial : 19 Sample Multiplier: 1

Instrument :
 MSVOA_X
 ClientSampled :
 FB-5719

Quant Time: May 11 03:29:54 2019
 Quant Method : Z:\VOASRV\HPCHEM1\MSVOA_X\METHOD\82X042919W.M
 Quant Title : SW846 8260
 QLast Update : Thu May 09 07:31:15 2019
 Response via : Initial Calibration



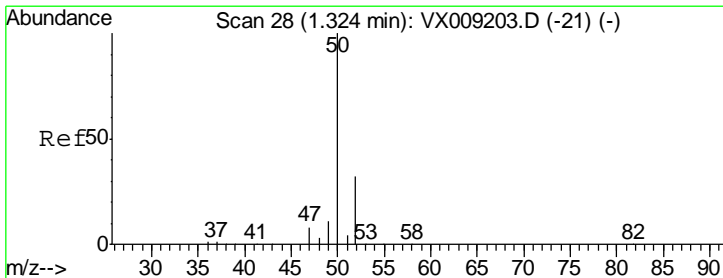
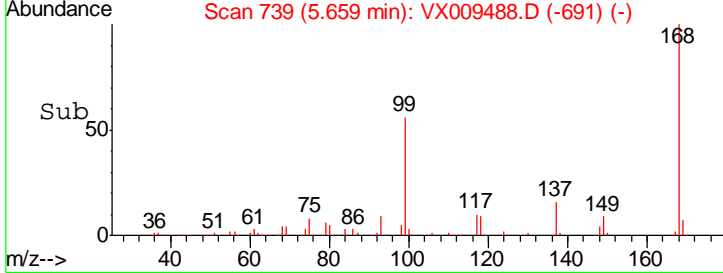
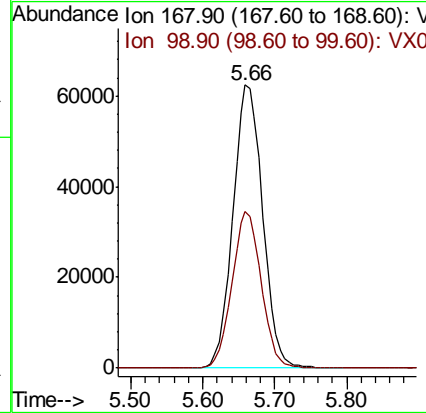
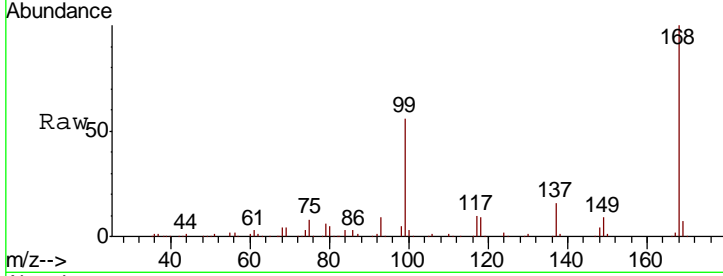


#1
 Pentafluorobenzene
 Concen: 50.000 ug/l
 RT: 5.66 min Scan# 739
 Delta R.T. -0.01 min
 Lab File: VX009488.D
 Acq: 10 May 2019 18:06

Instrument : MSVOA_X
 ClientSampled : FB-5719

Tgt Ion: 168 Resp: 178782

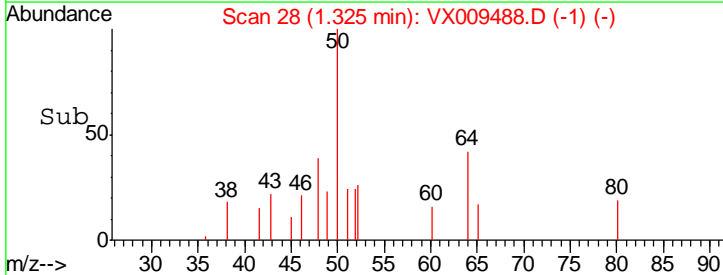
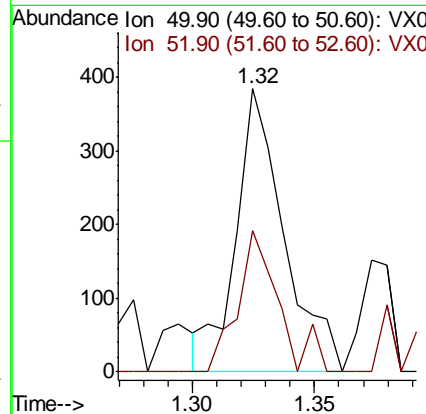
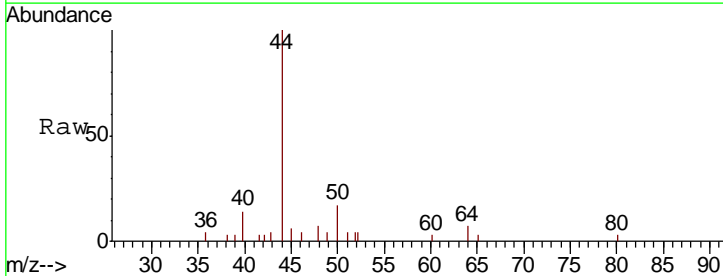
| Ion | Ratio | Lower | Upper |
|-----|-------|-------|-------|
| 168 | 100 | | |
| 99 | 55.6 | 42.3 | 63.5 |

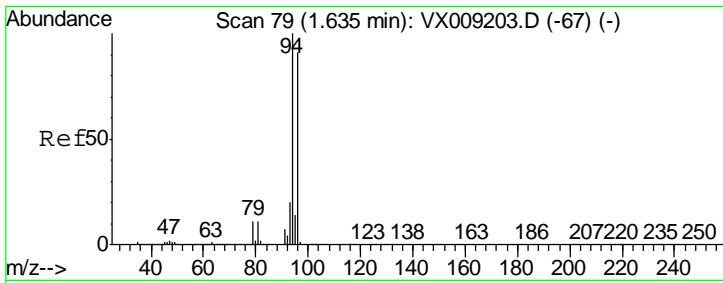


#3
 Chloromethane
 Concen: 0.234 ug/l
 RT: 1.32 min Scan# 28
 Delta R.T. 0.00 min
 Lab File: VX009488.D
 Acq: 10 May 2019 18:06

Tgt Ion: 50 Resp: 526

| Ion | Ratio | Lower | Upper |
|-----|-------|-------|-------|
| 50 | 100 | | |
| 52 | 50.0 | 25.9 | 38.9# |

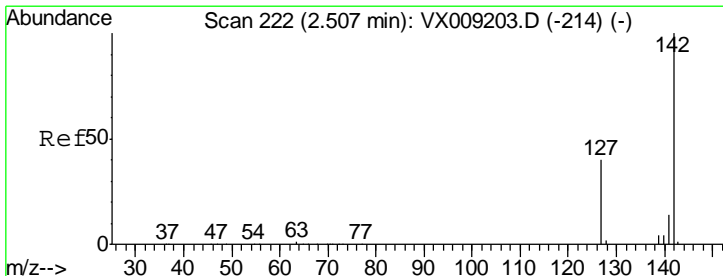
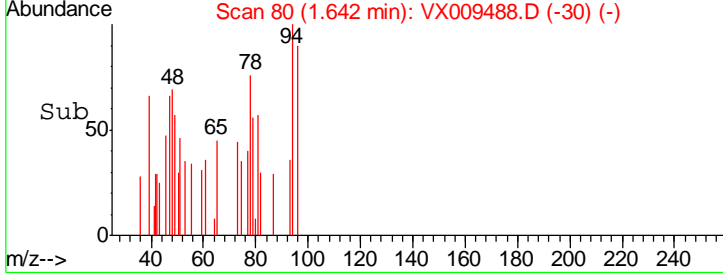
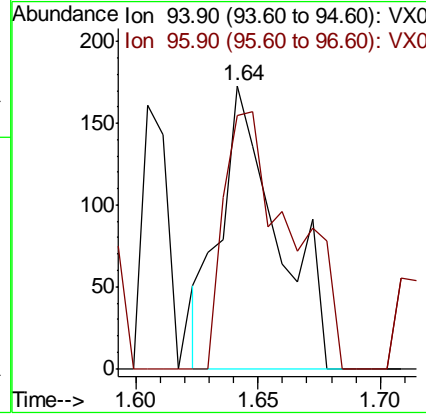
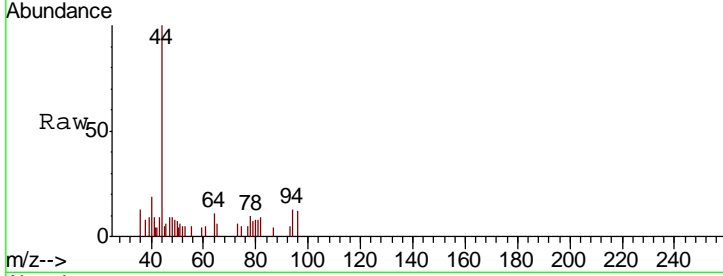




#5
 Bromomethane
 Concen: 0.213 ug/l
 RT: 1.64 min Scan# 80
 Delta R.T. 0.01 min
 Lab File: VX009488.D
 Acq: 10 May 2019 18:06

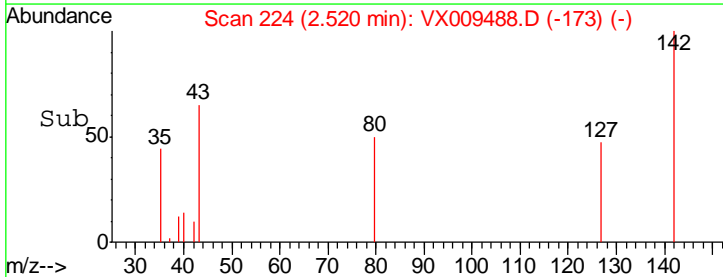
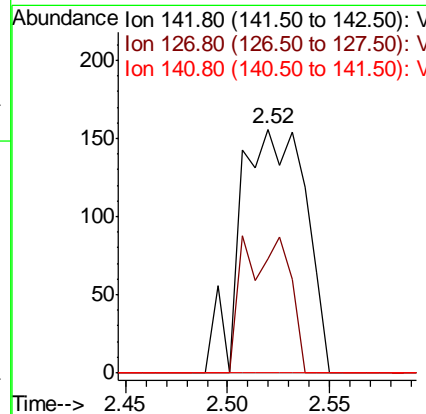
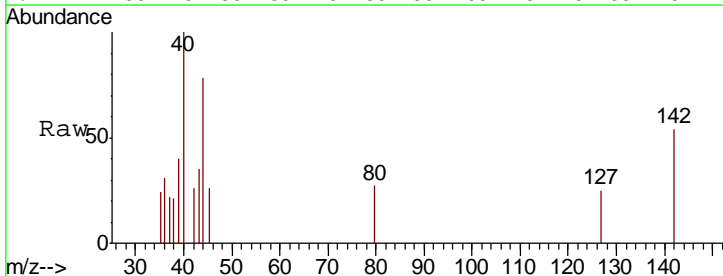
Instrument :
 MSVOA_X
 ClientSampled :
 FB-5719

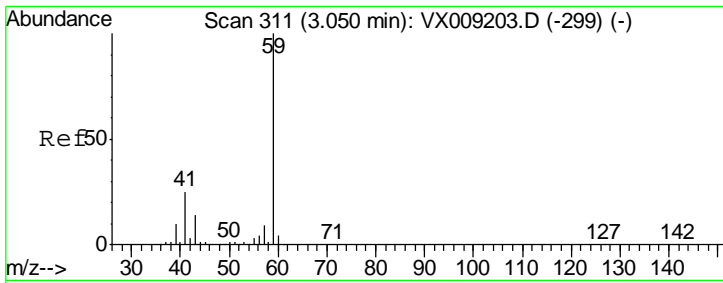
Tgt Ion: 94 Resp: 280
 Ion Ratio Lower Upper
 94 100
 96 89.6 73.0 109.6



#10
 Methyl Iodide
 Concen: 4.757 ug/l
 RT: 2.52 min Scan# 224
 Delta R.T. 0.01 min
 Lab File: VX009488.D
 Acq: 10 May 2019 18:06

Tgt Ion: 142 Resp: 350
 Ion Ratio Lower Upper
 142 100
 127 38.3 32.7 49.1
 141 0.0 11.5 17.3#

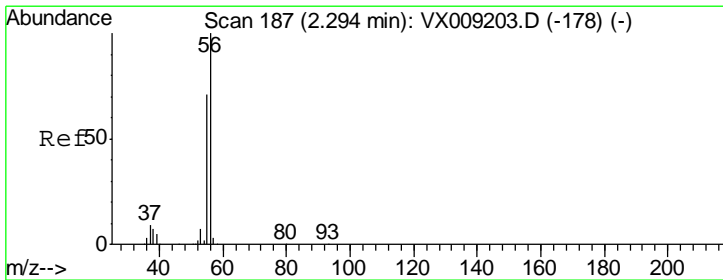
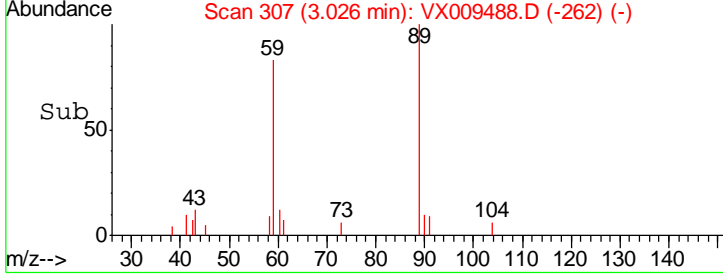
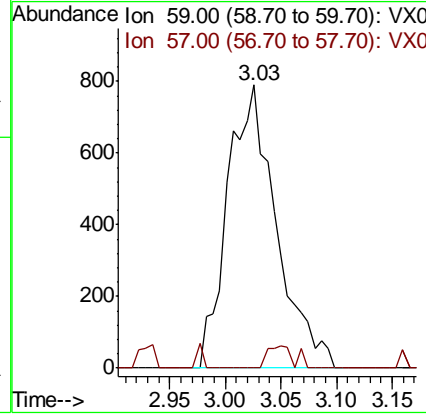
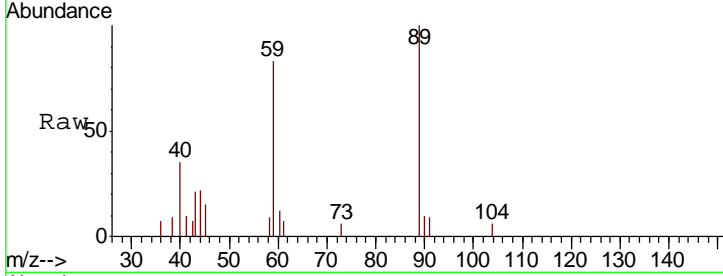




#11
 Tert butyl alcohol
 Concen: 4.264 ug/l
 RT: 3.03 min Scan# 307
 Delta R.T. -0.02 min
 Lab File: VX009488.D
 Acq: 10 May 2019 18:06

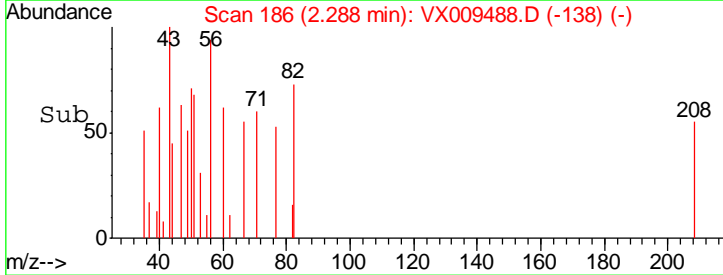
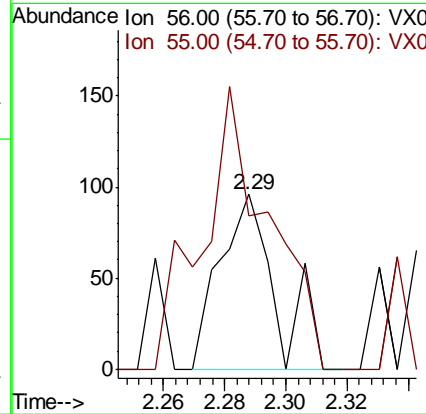
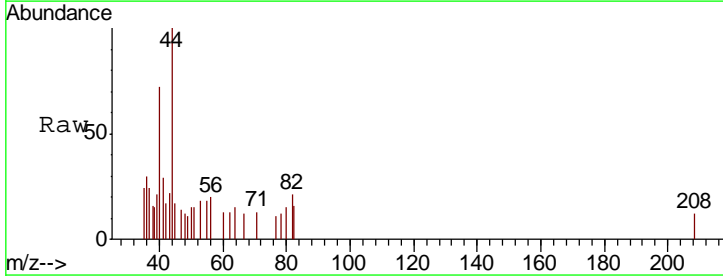
Instrument : MSVOA_X
 ClientSampled : FB-5719

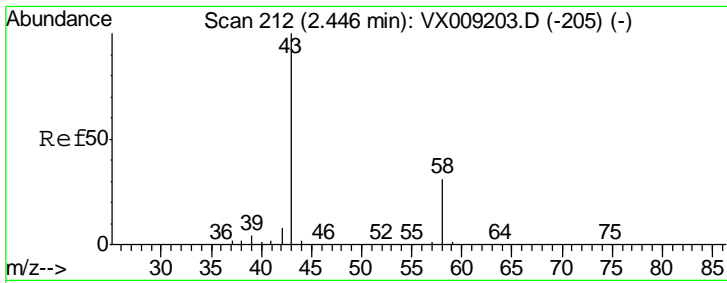
Tgt Ion: 59 Resp: 2409
 Ion Ratio Lower Upper
 59 100
 57 0.0 8.2 12.2#



#13
 Acrolein
 Concen: 0.238 ug/l
 RT: 2.29 min Scan# 186
 Delta R.T. -0.01 min
 Lab File: VX009488.D
 Acq: 10 May 2019 18:06

Tgt Ion: 56 Resp: 122
 Ion Ratio Lower Upper
 56 100
 55 193.4 56.6 85.0#

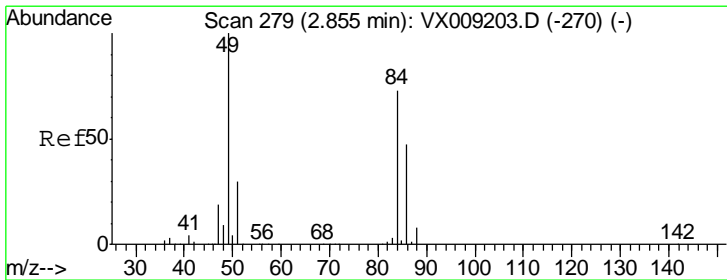
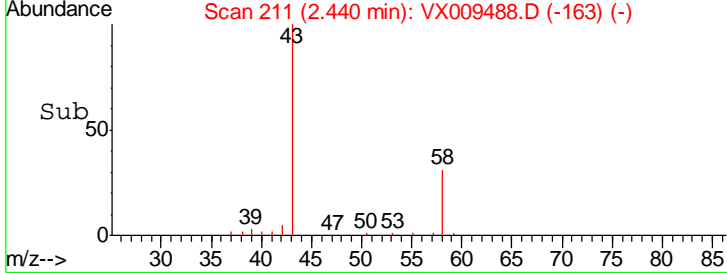
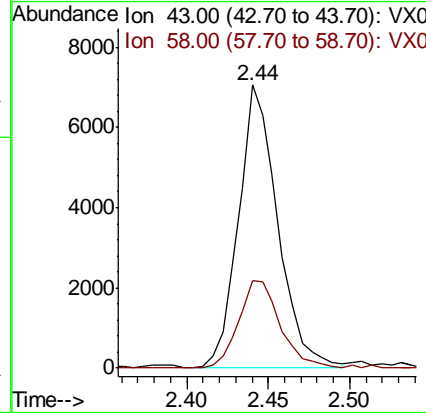
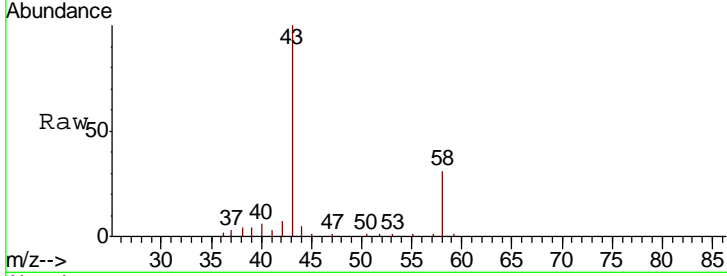




#16
 Acetone
 Concen: 9.029 ug/l
 RT: 2.44 min Scan# 211
 Delta R.T. -0.01 min
 Lab File: VX009488.D
 Acq: 10 May 2019 18:06

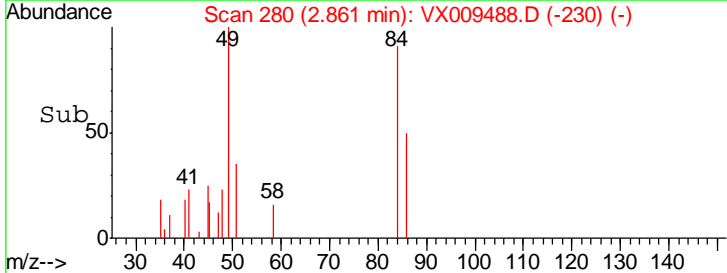
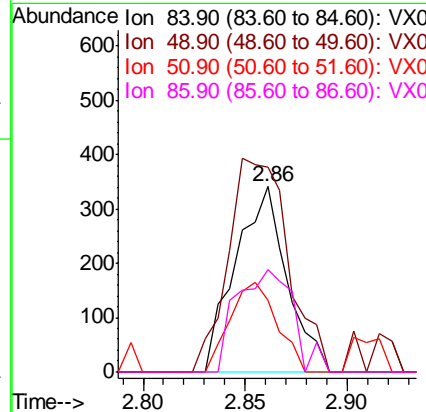
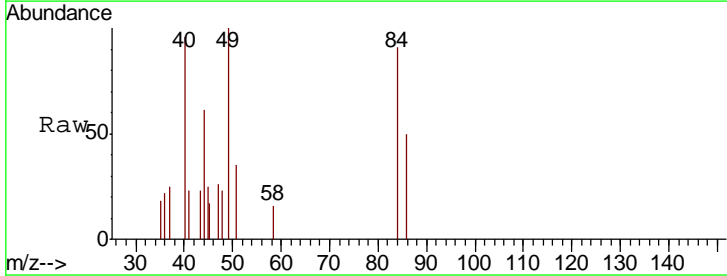
Instrument :
 MSVOA_X
 ClientSampled :
 FB-5719

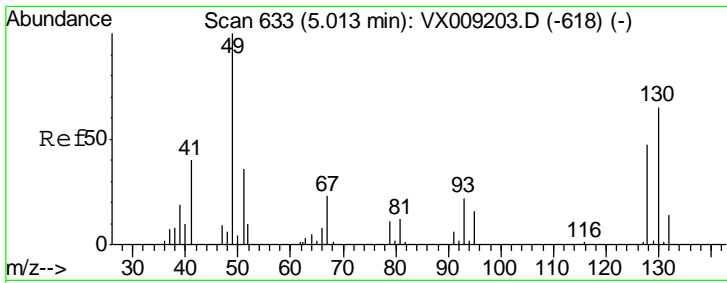
| Tgt Ion | Resp | Lower | Upper |
|---------|-------|-------|-------|
| 43 | 11833 | | |
| 58 | 30.9 | 24.9 | 37.3 |



#20
 Methylene Chloride
 Concen: 0.283 ug/l
 RT: 2.86 min Scan# 280
 Delta R.T. 0.01 min
 Lab File: VX009488.D
 Acq: 10 May 2019 18:06

| Tgt Ion | Resp | Lower | Upper |
|---------|-------|-------|-------|
| 84 | 600 | | |
| 49 | 110.3 | 109.9 | 164.9 |
| 51 | 39.0 | 32.7 | 49.1 |
| 86 | 55.1 | 52.0 | 78.0 |

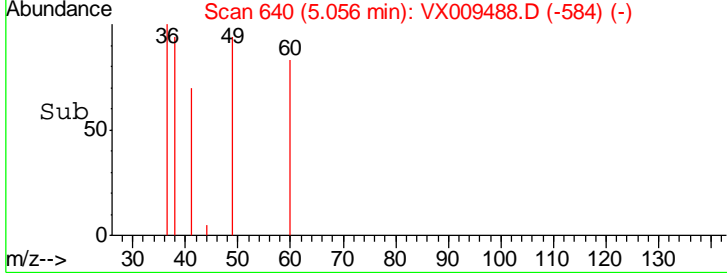
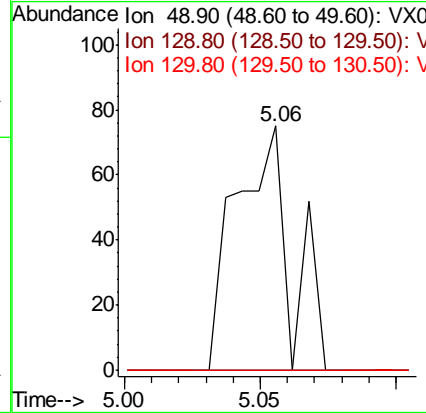
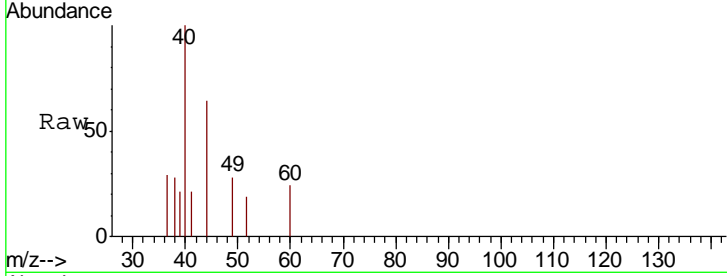




#28
 Bromochloromethane
 Concen: Below Cal
 RT: 5.06 min Scan# 640
 Delta R.T. 0.04 min
 Lab File: VX009488.D
 Acq: 10 May 2019 18:06

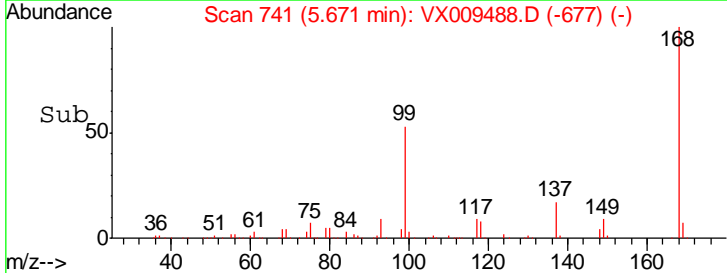
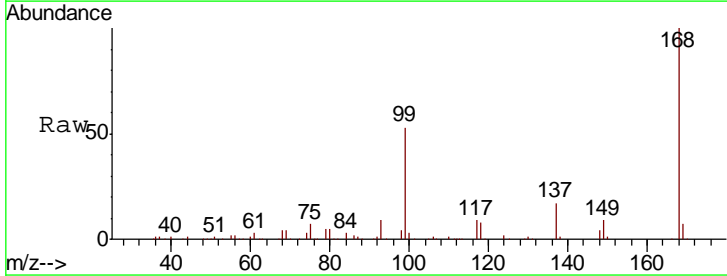
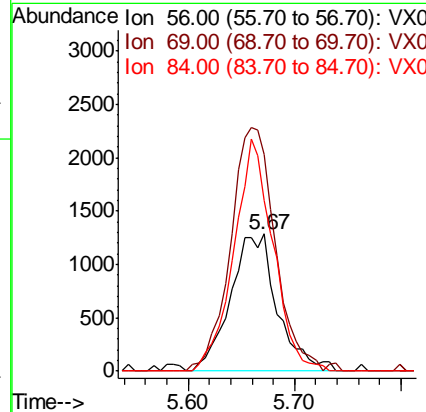
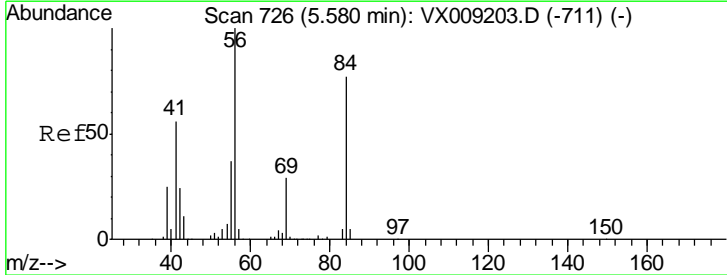
Instrument :
 MSVOA_X
ClientSampled :
 FB-5719

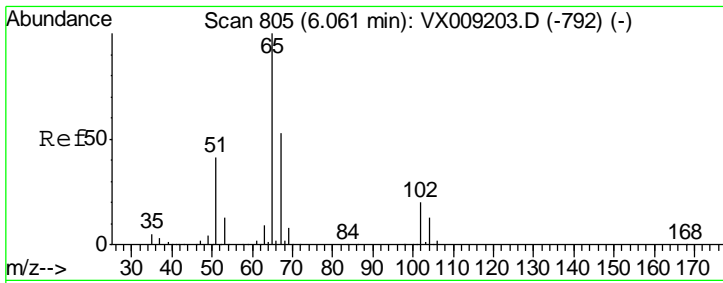
| Tgt Ion | Resp | Lower | Upper |
|---------|------|-------|-------|
| 49 | 106 | | |
| 129 | 0.0 | 0.0 | 3.8 |
| 130 | 0.0 | 51.2 | 76.8# |



#31
 Cyclohexane
 Concen: 1.098 ug/l
 RT: 5.67 min Scan# 741
 Delta R.T. 0.09 min
 Lab File: VX009488.D
 Acq: 10 May 2019 18:06

| Tgt Ion | Resp | Lower | Upper |
|---------|-------|-------|-------|
| 56 | 3961 | | |
| 69 | 157.5 | 23.4 | 35.0# |
| 84 | 124.0 | 61.9 | 92.9# |

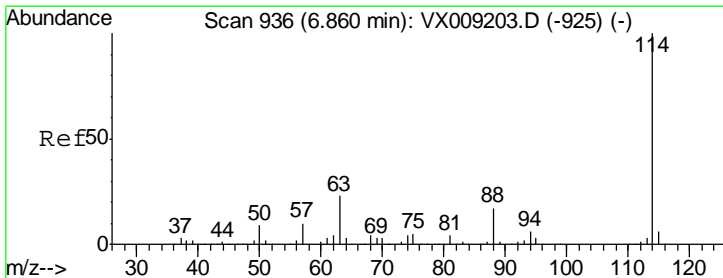
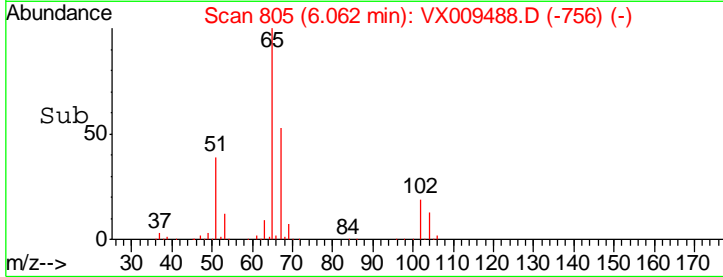
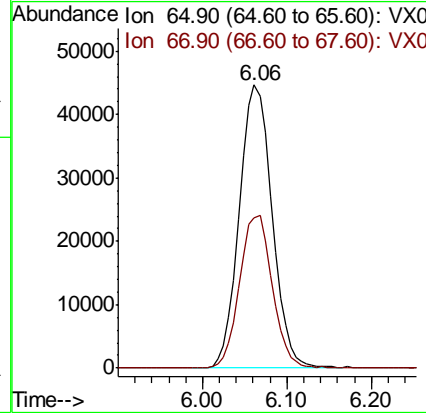
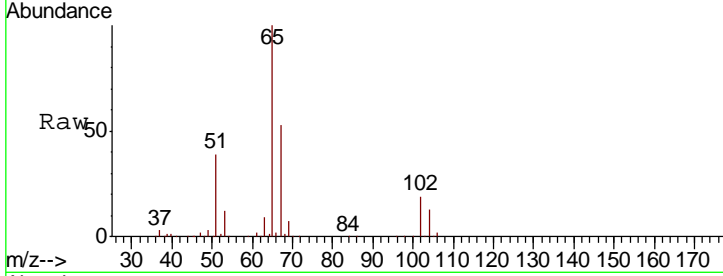




#33
 1,2-Dichloroethane-d4
 Concen: 48.309 ug/l
 RT: 6.06 min Scan# 805
 Delta R.T. 0.00 min
 Lab File: VX009488.D
 Acq: 10 May 2019 18:06

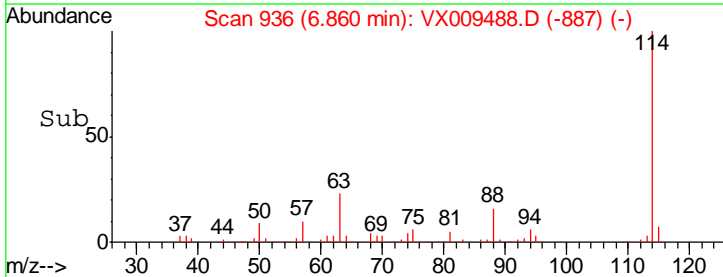
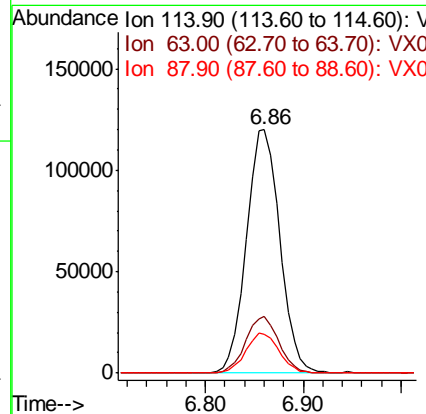
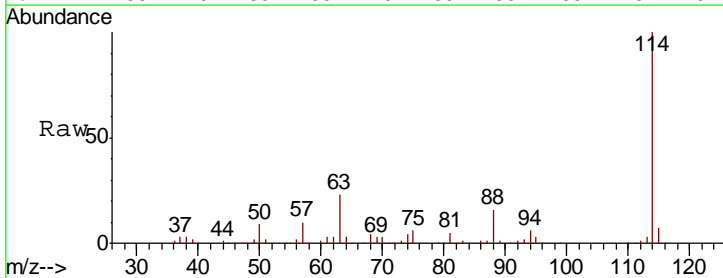
Instrument :
 MSVOA_X
 ClientSampled :
 FB-5719

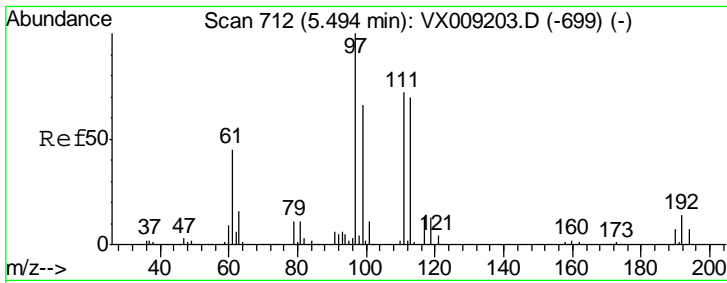
| Tgt Ion | Resp | Lower | Upper |
|---------|--------|-------|-------|
| 65 | 117903 | | |
| 67 | 53.8 | 0.0 | 106.6 |



#34
 1,4-Difluorobenzene
 Concen: 50.000 ug/l
 RT: 6.86 min Scan# 936
 Delta R.T. 0.00 min
 Lab File: VX009488.D
 Acq: 10 May 2019 18:06

| Tgt Ion | Resp | Lower | Upper |
|---------|--------|-------|-------|
| 114 | 284715 | | |
| 63 | 23.1 | 0.0 | 45.6 |
| 88 | 16.0 | 0.0 | 33.2 |

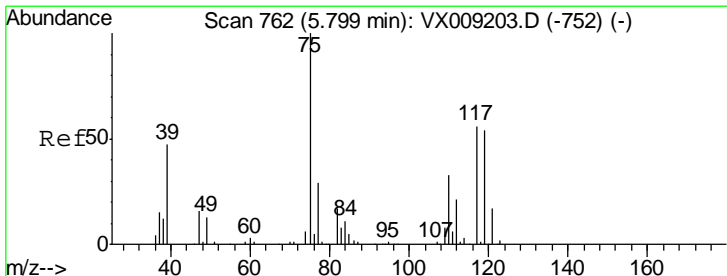
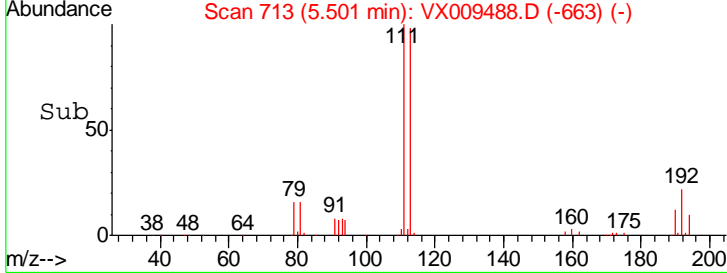
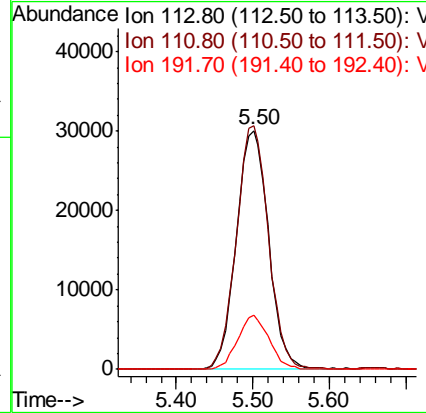
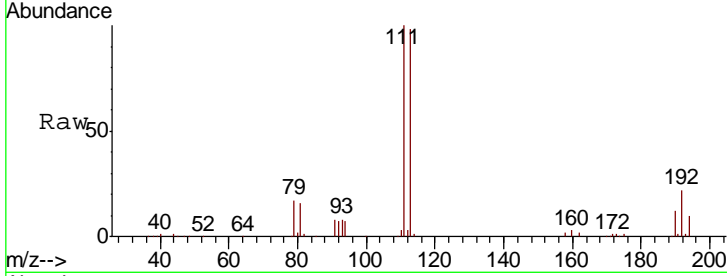




#35
 Dibromofluoromethane
 Concen: 49.079 ug/l
 RT: 5.50 min Scan# 713
 Delta R.T. 0.01 min
 Lab File: VX009488.D
 Acq: 10 May 2019 18:06

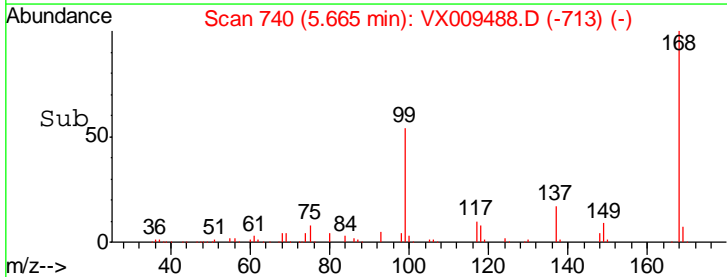
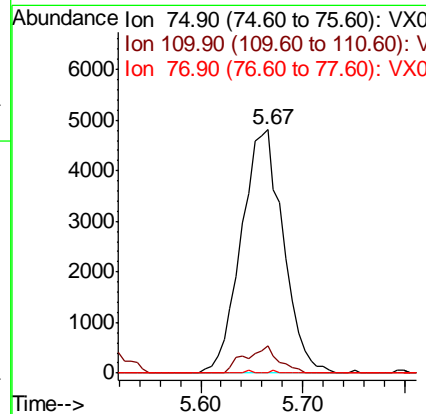
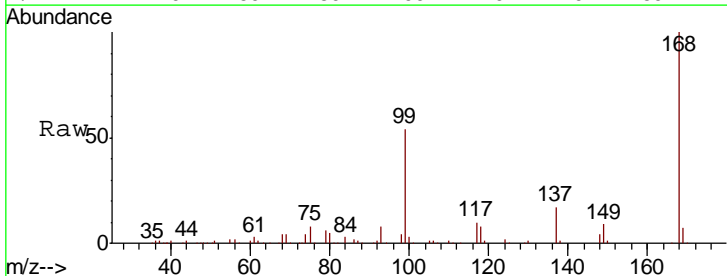
Instrument :
 MSVOA_X
 ClientSampled :
 FB-5719

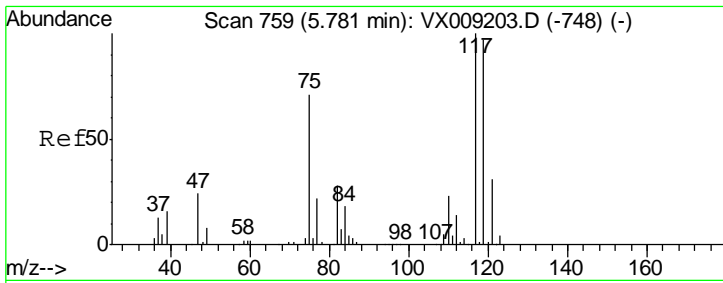
| Tgt Ion | Resp | Lower | Upper |
|---------|-------|-------|-------|
| 113 | 87843 | | |
| 113 | 100 | | |
| 111 | 101.4 | 82.8 | 124.2 |
| 192 | 22.0 | 17.0 | 25.6 |



#36
 1,1-Dichloropropene
 Concen: 5.185 ug/l
 RT: 5.67 min Scan# 740
 Delta R.T. -0.13 min
 Lab File: VX009488.D
 Acq: 10 May 2019 18:06

| Tgt Ion | Resp | Lower | Upper |
|---------|-------|-------|-------|
| 75 | 13719 | | |
| 75 | 100 | | |
| 110 | 8.9 | 16.9 | 50.6# |
| 77 | 0.1 | 24.8 | 37.2# |

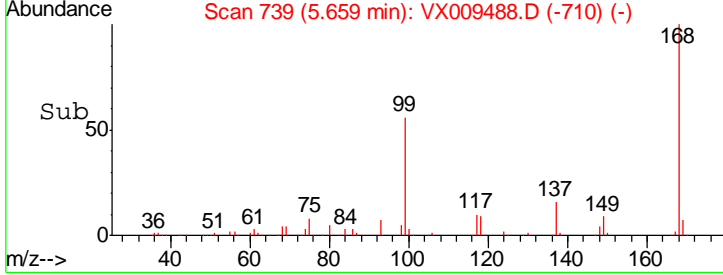
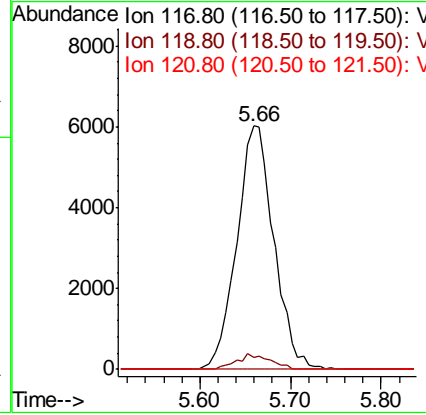
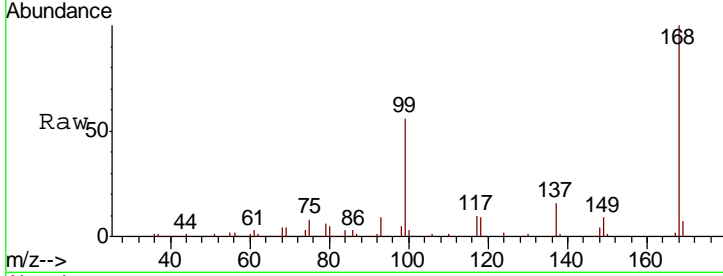




#38
 Carbon Tetrachloride
 Concen: 7.075 ug/l
 RT: 5.66 min Scan# 739
 Delta R.T. -0.12 min
 Lab File: VX009488.D
 Acq: 10 May 2019 18:06

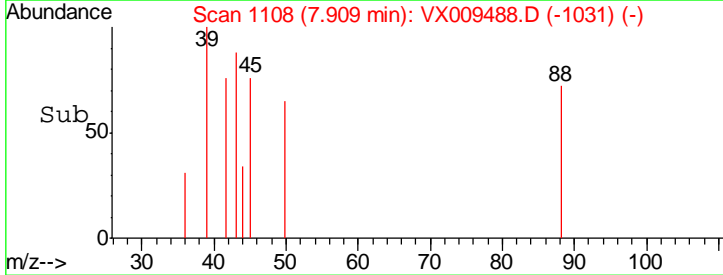
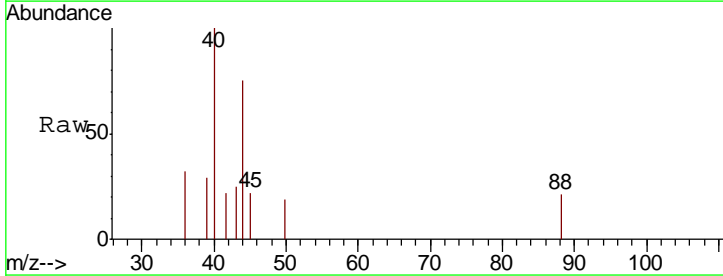
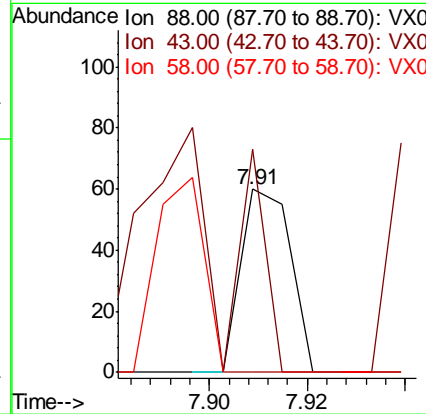
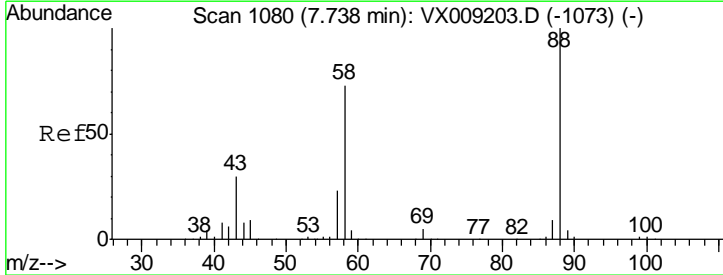
Instrument :
 MSVOA_X
ClientSampled :
 FB-5719

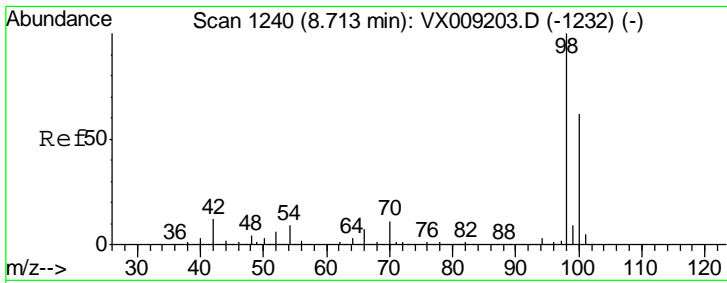
| Tgt Ion | Resp | Lower | Upper |
|---------|-------|-------|--------|
| 117 | 17008 | | |
| 119 | 4.9 | 77.5 | 116.3# |
| 121 | 0.0 | 24.7 | 37.1# |



#49
 1,4-Dioxane
 Concen: 0.708 ug/l
 RT: 7.91 min Scan# 1108
 Delta R.T. 0.17 min
 Lab File: VX009488.D
 Acq: 10 May 2019 18:06

| Tgt Ion | Resp | Lower | Upper |
|---------|-------|-------|-------|
| 88 | 42 | | |
| 43 | 233.3 | 28.6 | 42.8# |
| 58 | 104.8 | 61.7 | 92.5# |



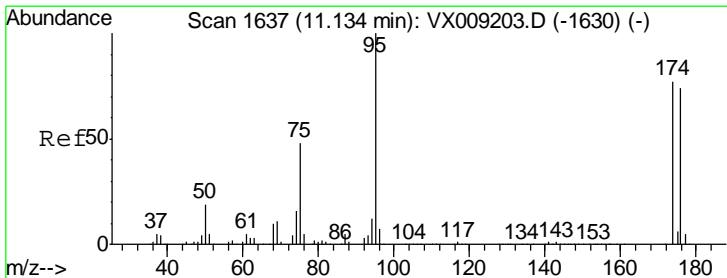
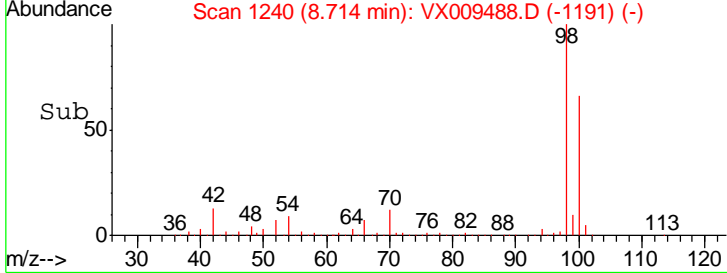
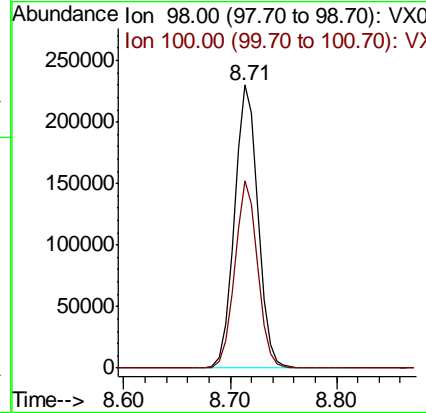
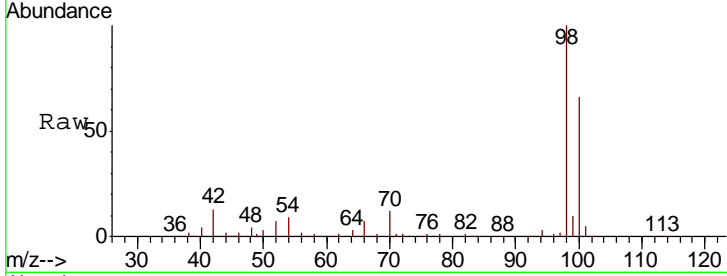


#50
 Toluene-d8
 Concen: 49.194 ug/l
 RT: 8.71 min Scan# 1240
 Delta R.T. 0.00 min
 Lab File: VX009488.D
 Acq: 10 May 2019 18:06

Instrument : MSVOA_X
 ClientSampled : FB-5719

Tgt Ion: 98 Resp: 355476

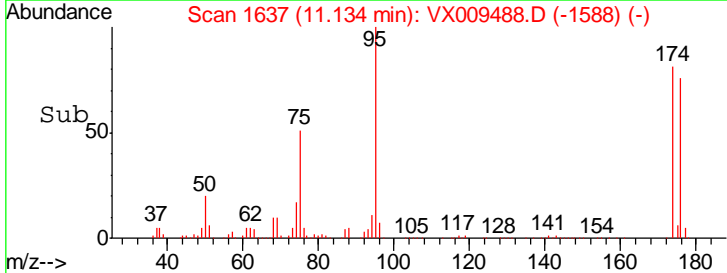
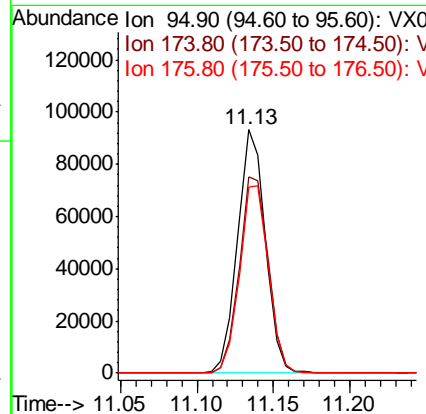
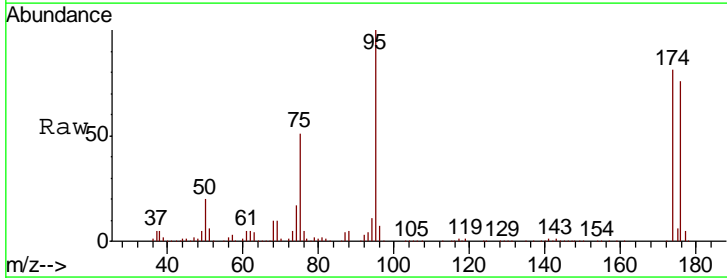
| Ion | Ratio | Lower | Upper |
|-----|-------|-------|-------|
| 98 | 100 | | |
| 100 | 64.4 | 51.2 | 76.8 |

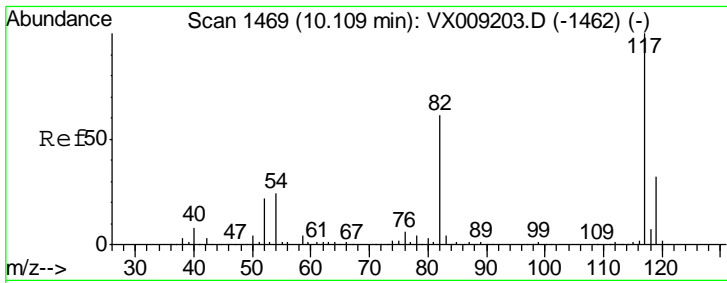


#62
 4-Bromofluorobenzene
 Concen: 44.686 ug/l
 RT: 11.13 min Scan# 1637
 Delta R.T. 0.00 min
 Lab File: VX009488.D
 Acq: 10 May 2019 18:06

Tgt Ion: 95 Resp: 117329

| Ion | Ratio | Lower | Upper |
|-----|-------|-------|-------|
| 95 | 100 | | |
| 174 | 84.2 | 0.0 | 161.6 |
| 176 | 80.3 | 0.0 | 159.2 |

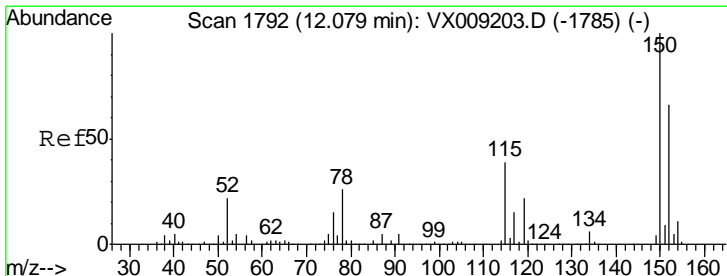
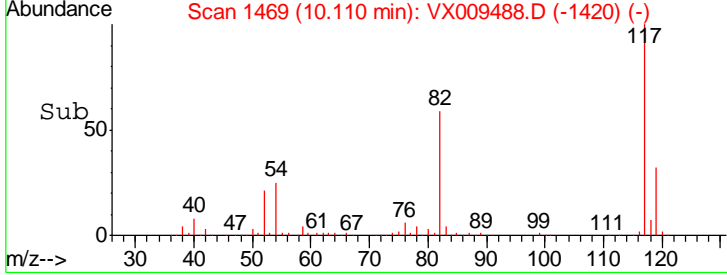
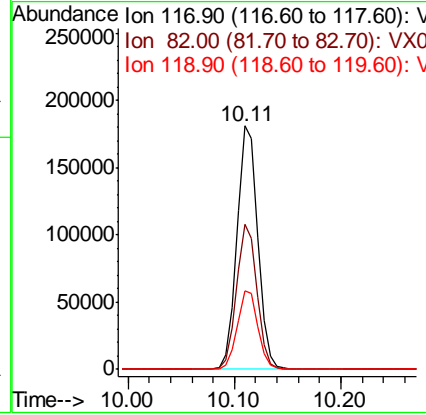
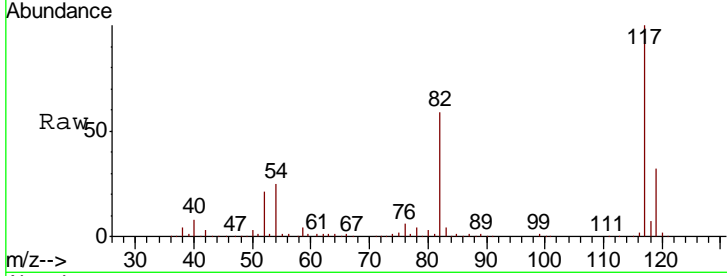




#63
 Chlorobenzene-d5
 Concen: 50.000 ug/l
 RT: 10.11 min Scan# 1469
 Delta R.T. 0.00 min
 Lab File: VX009488.D
 Acq: 10 May 2019 18:06

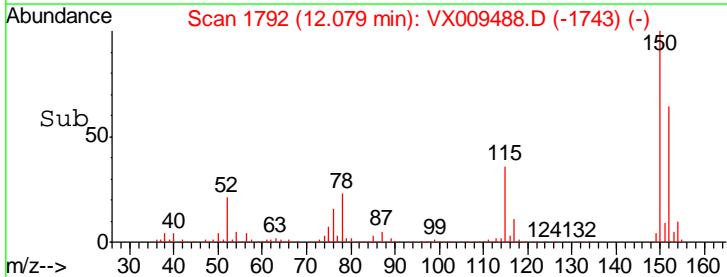
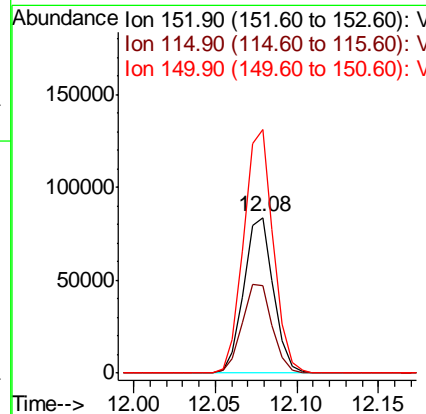
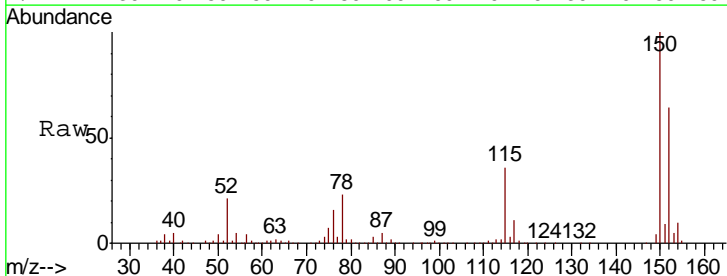
Instrument :
 MSVOA_X
 ClientSampled :
 FB-5719

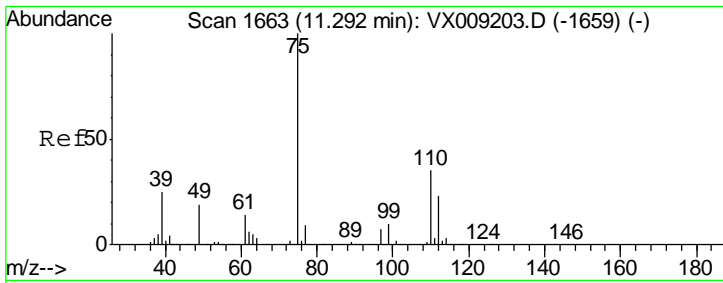
| Tgt Ion | Resp | Lower | Upper |
|---------|--------|-------|-------|
| 117 | 248775 | | |
| 82 | 59.4 | 48.8 | 73.2 |
| 119 | 32.1 | 25.8 | 38.6 |



#72
 1,4-Dichlorobenzene-d4
 Concen: 50.000 ug/l
 RT: 12.08 min Scan# 1792
 Delta R.T. 0.00 min
 Lab File: VX009488.D
 Acq: 10 May 2019 18:06

| Tgt Ion | Resp | Lower | Upper |
|---------|--------|-------|-------|
| 152 | 106179 | | |
| 115 | 58.2 | 41.2 | 123.6 |
| 150 | 156.3 | 0.0 | 346.4 |

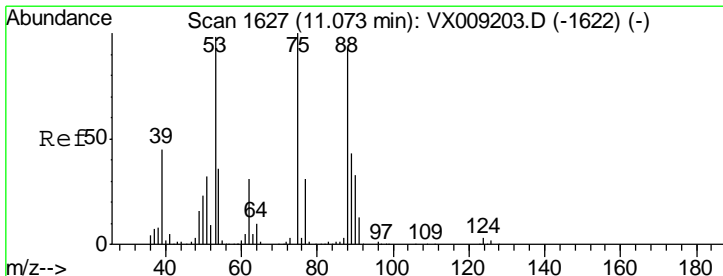
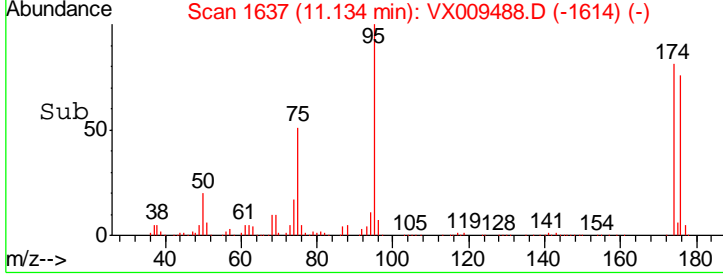
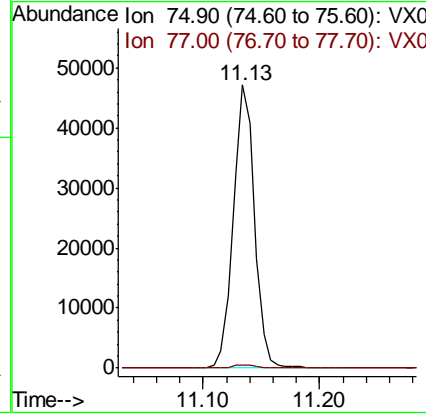
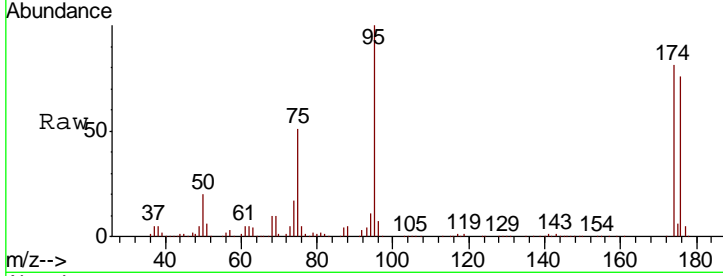




#76
 1,2,3-Trichloropropane
 Concen: 24.219 ug/l
 RT: 11.13 min Scan# 1637
 Delta R.T. -0.16 min
 Lab File: VX009488.D
 Acq: 10 May 2019 18:06

Instrument :
 MSVOA_X
 ClientSampled :
 FB-5719

Tgt Ion: 75 Resp: 59651
 Ion Ratio Lower Upper
 75 100
 77 1.3 22.1 66.1#



#81
 trans-1,4-Dichloro-2-butene
 Concen: 61.968 ug/l
 RT: 11.13 min Scan# 1637
 Delta R.T. 0.06 min
 Lab File: VX009488.D
 Acq: 10 May 2019 18:06

Tgt Ion: 75 Resp: 59651
 Ion Ratio Lower Upper
 75 100
 53 0.1 79.0 118.6#
 89 0.0 34.7 52.1#

