

Data Path : Z:\voasrv\HPCHEM1\MSVOA\_X\Data\VX051124\  
 Data File : VX041461.D  
 Acq On : 10 May 2024 16:11  
 Operator : JC/MD  
 Sample : P2445-08  
 Misc : 5.0mL/MSVOA\_X/WATER  
 ALS Vial : 9 Sample Multiplier: 1

Instrument :  
 MSVOA\_X  
 ClientSampleId :  
 EB-01-050924

Quant Time: May 11 01:36:33 2024  
 Quant Method : Z:\voasrv\HPCHEM1\MSVOA\_X\Method\82X043024W.M  
 Quant Title : SW846 8260  
 QLast Update : Wed May 08 06:03:16 2024  
 Response via : Initial Calibration

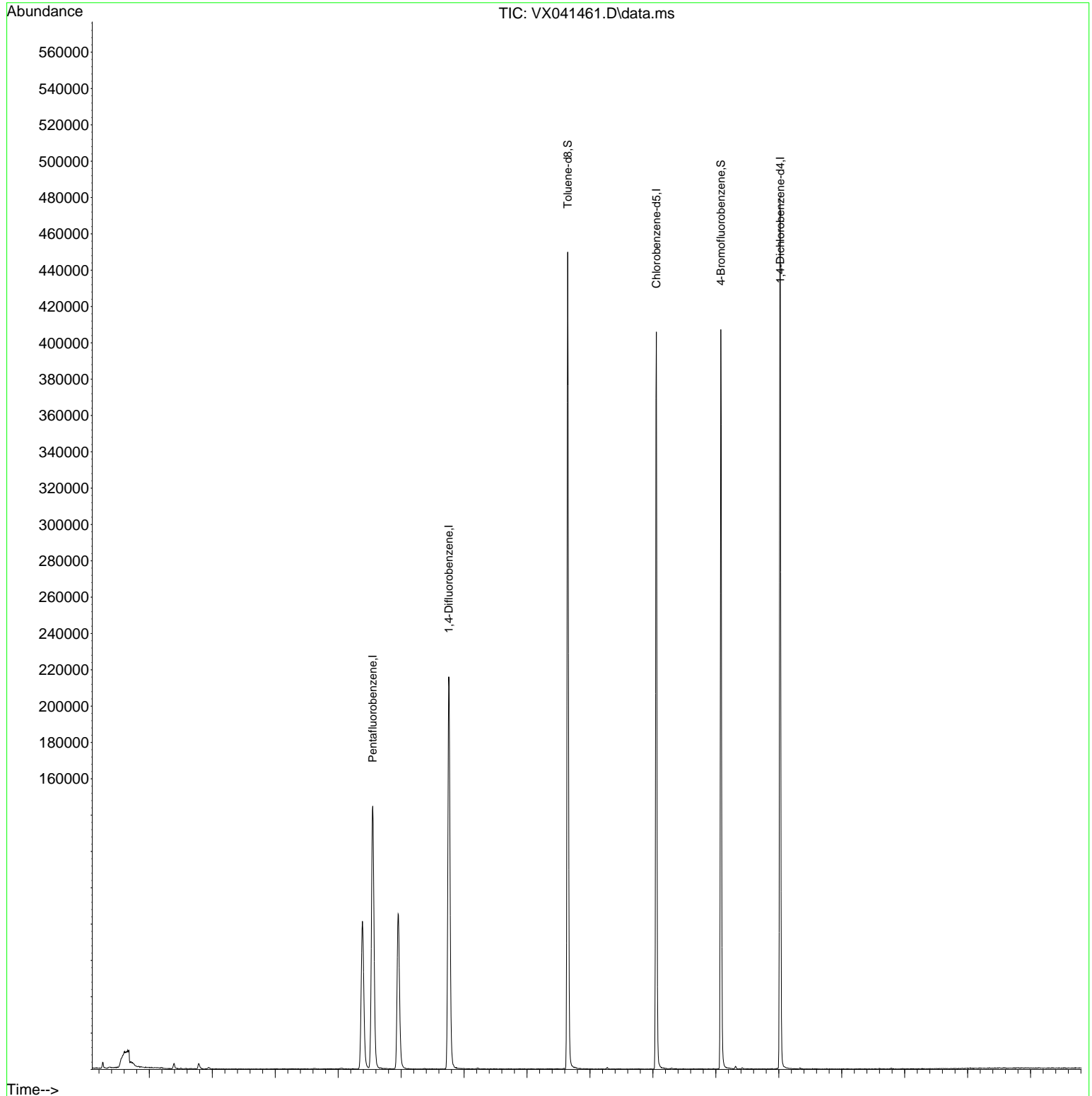
Compound	R.T.	QIon	Response	Conc	Units	Dev(Min)
-----						
Internal Standards						
1) Pentafluorobenzene	5.550	168	155425	50.000	ug/l	# 0.00
34) 1,4-Difluorobenzene	6.757	114	229202	50.000	ug/l	0.00
63) Chlorobenzene-d5	10.055	117	192892	50.000	ug/l	0.00
72) 1,4-Dichlorobenzene-d4	12.024	152	111929	50.000	ug/l	0.00
System Monitoring Compounds						
33) 1,2-Dichloroethane-d4	5.952	65	87338	51.618	ug/l	0.00
Spiked Amount	50.000	Range 78 - 117	Recovery	=	103.240%	
35) Dibromofluoromethane	5.385	113	70837	45.606	ug/l	0.00
Spiked Amount	50.000	Range 75 - 124	Recovery	=	91.220%	
50) Toluene-d8	8.647	98	263996	53.700	ug/l	0.00
Spiked Amount	50.000	Range 92 - 112	Recovery	=	107.400%	
62) 4-Bromofluorobenzene	11.079	95	100206	52.655	ug/l	0.00
Spiked Amount	50.000	Range 83 - 123	Recovery	=	105.320%	
Target Compounds						
20) Methylene Chloride	2.782	84	1629	1.109	ug/l	# 83
-----						

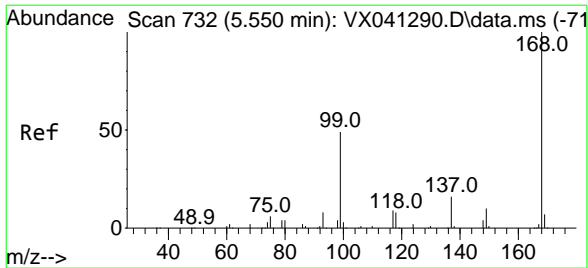
(#) = qualifier out of range (m) = manual integration (+) = signals summed

Data Path : Z:\voasrv\HPCHEM1\MSVOA\_X\Data\VX051124\  
 Data File : VX041461.D  
 Acq On : 10 May 2024 16:11  
 Operator : JC/MD  
 Sample : P2445-08  
 Misc : 5.0mL/MSVOA\_X/WATER  
 ALS Vial : 9 Sample Multiplier: 1

Instrument :  
 MSVOA\_X  
 ClientSampleId :  
 EB-01-050924

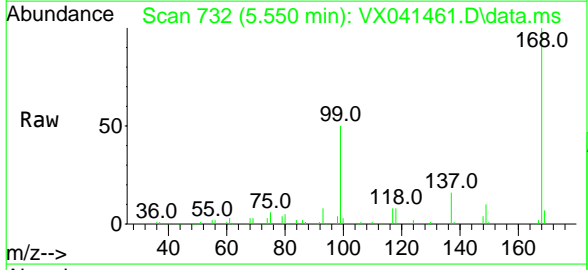
Quant Time: May 11 01:36:33 2024  
 Quant Method : Z:\voasrv\HPCHEM1\MSVOA\_X\Method\82X043024W.M  
 Quant Title : SW846 8260  
 QLast Update : Wed May 08 06:03:16 2024  
 Response via : Initial Calibration



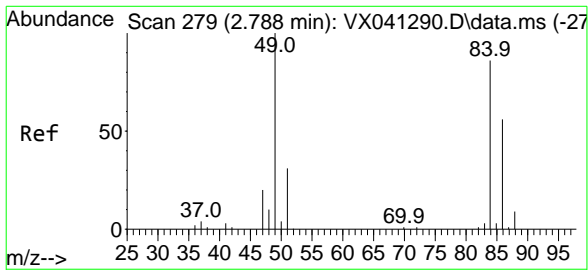
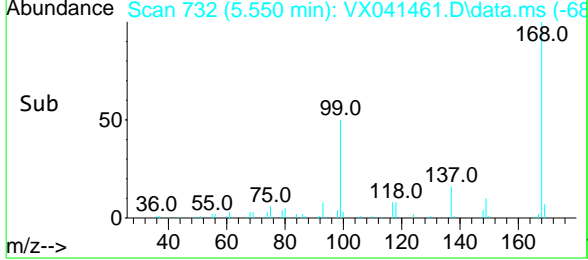
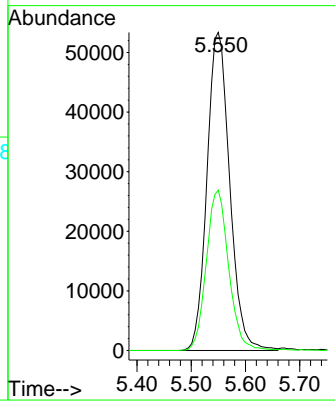


#1  
**Pentafluorobenzene**  
 Concen: 50.000 ug/l  
 RT: 5.550 min Scan# 73  
 Delta R.T. -0.000 min  
 Lab File: VX041461.D  
 Acq: 10 May 2024 16:11

**Instrument :**  
 MSVOA\_X  
**ClientSampleId :**  
 EB-01-050924

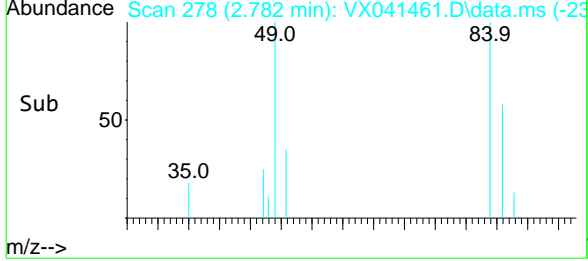
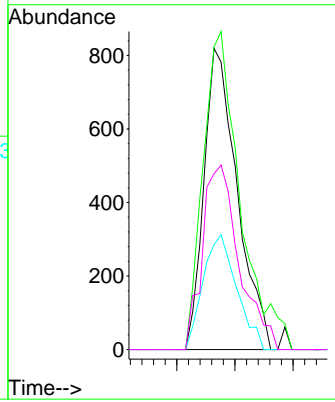
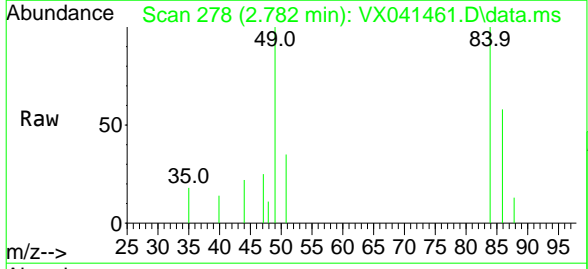


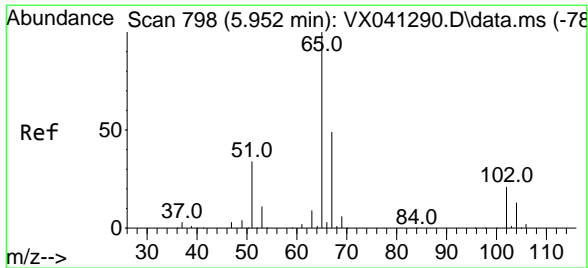
Tgt Ion: 168 Resp: 155425  
 Ion Ratio Lower Upper  
 168 100  
 99 50.4 56.6 85.0#



#20  
**Methylene Chloride**  
 Concen: 1.109 ug/l  
 RT: 2.782 min Scan# 278  
 Delta R.T. -0.006 min  
 Lab File: VX041461.D  
 Acq: 10 May 2024 16:11

Tgt Ion: 84 Resp: 1629  
 Ion Ratio Lower Upper  
 84 100  
 49 100.5 103.6 155.4#  
 51 34.8 33.8 50.6  
 86 58.4 49.4 74.0

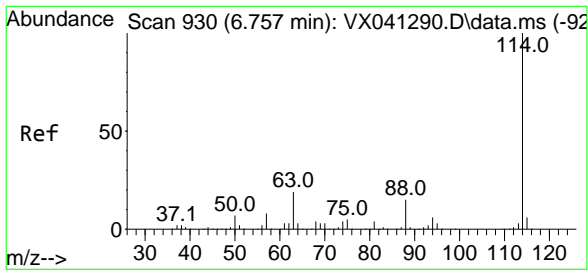
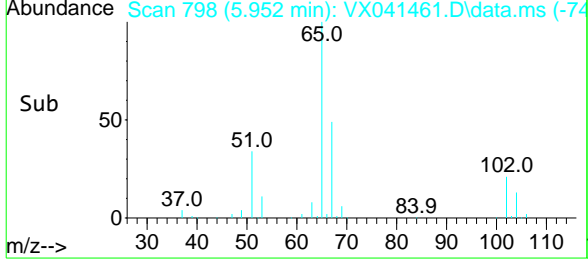
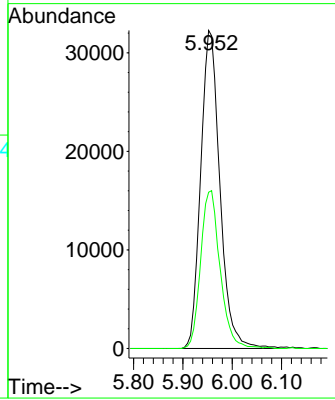
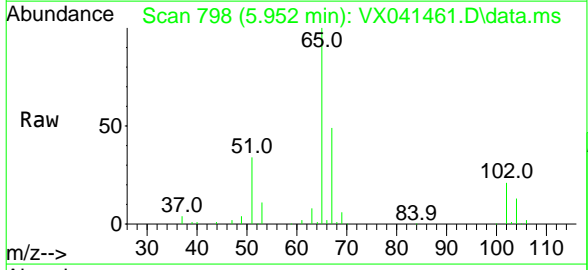




#33  
 1,2-Dichloroethane-d4  
 Concen: 51.618 ug/l  
 RT: 5.952 min Scan# 79  
 Delta R.T. 0.000 min  
 Lab File: VX041461.D  
 Acq: 10 May 2024 16:11

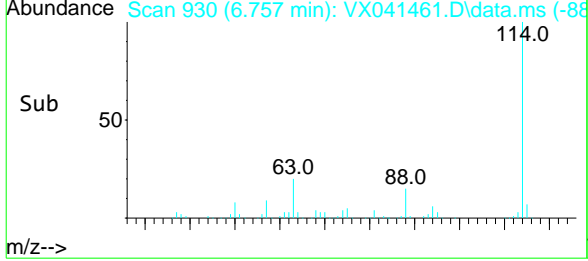
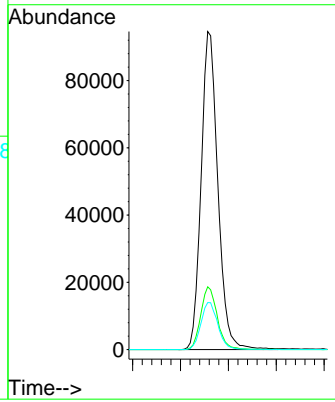
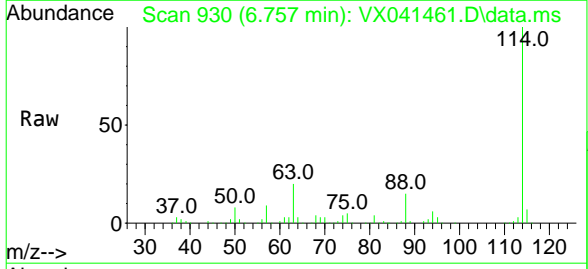
Instrument : MSVOA\_X  
 ClientSampleId : EB-01-050924

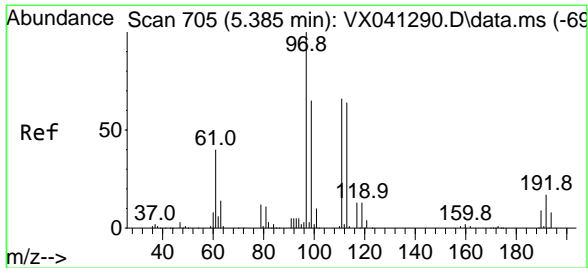
Tgt Ion: 65 Resp: 87338  
 Ion Ratio Lower Upper  
 65 100  
 67 50.2 0.0 100.2



#34  
 1,4-Difluorobenzene  
 Concen: 50.000 ug/l  
 RT: 6.757 min Scan# 930  
 Delta R.T. 0.000 min  
 Lab File: VX041461.D  
 Acq: 10 May 2024 16:11

Tgt Ion: 114 Resp: 229202  
 Ion Ratio Lower Upper  
 114 100  
 63 19.7 0.0 45.0  
 88 14.8 0.0 36.6

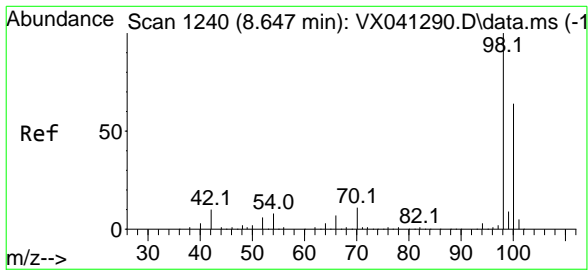
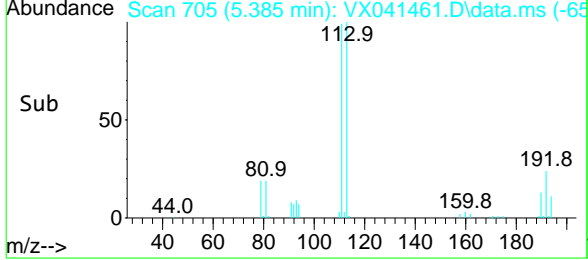
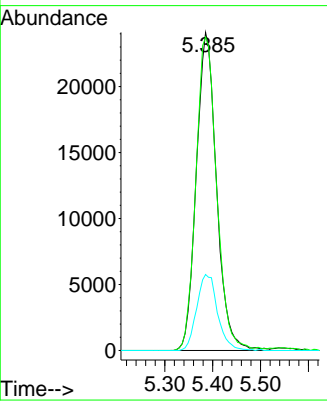
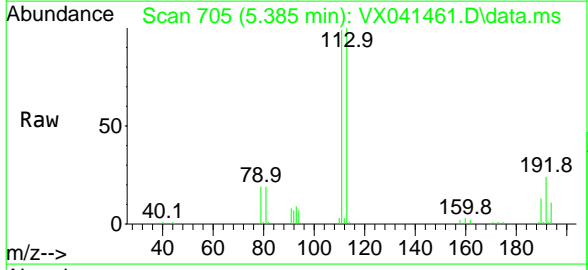




#35  
 Dibromofluoromethane  
 Concen: 45.606 ug/l  
 RT: 5.385 min Scan# 705  
 Delta R.T. 0.000 min  
 Lab File: VX041461.D  
 Acq: 10 May 2024 16:11

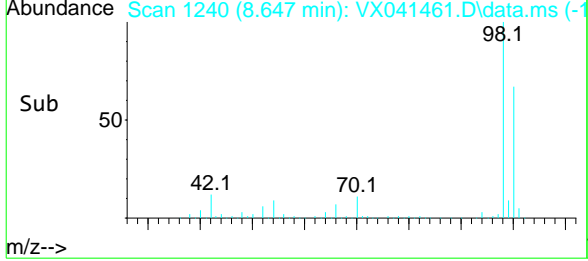
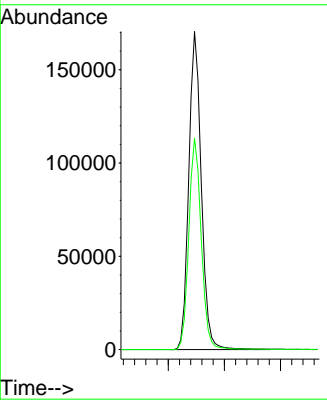
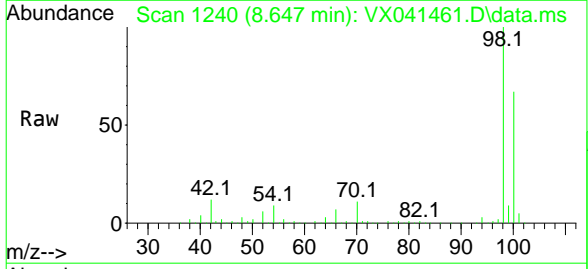
Instrument : MSVOA\_X  
 ClientSampleId : EB-01-050924

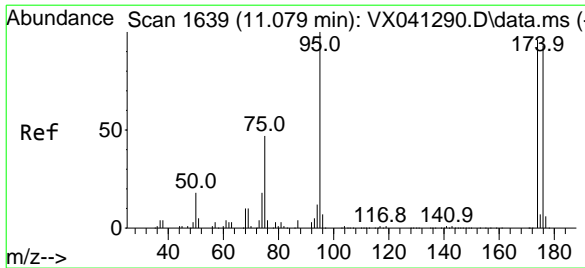
Tgt Ion	Resp	Lower	Upper
113	70837		
113	100		
111	100.9	82.9	124.3
192	24.5	13.3	19.9



#50  
 Toluene-d8  
 Concen: 53.700 ug/l  
 RT: 8.647 min Scan# 1240  
 Delta R.T. 0.000 min  
 Lab File: VX041461.D  
 Acq: 10 May 2024 16:11

Tgt Ion	Resp	Lower	Upper
98	263996		
98	100		
100	66.1	53.1	79.7





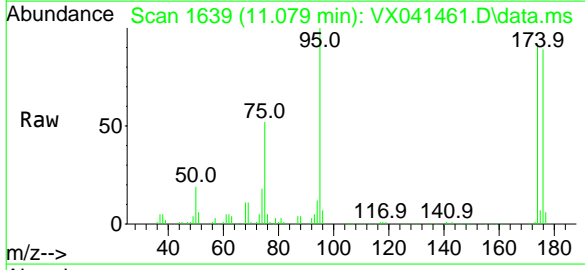
#62  
 4-Bromofluorobenzene  
 Concen: 52.655 ug/l  
 RT: 11.079 min Scan# 1639  
 Delta R.T. 0.000 min  
 Lab File: VX041461.D  
 Acq: 10 May 2024 16:11

Instrument :

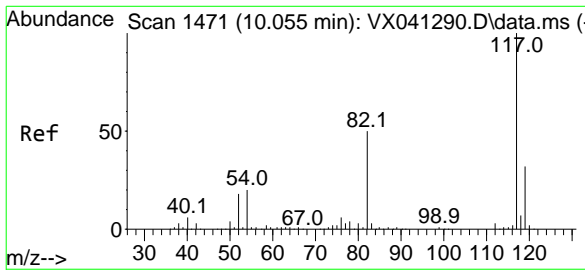
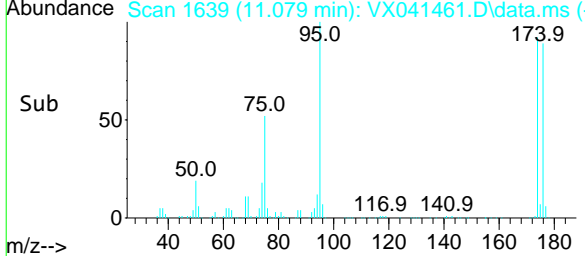
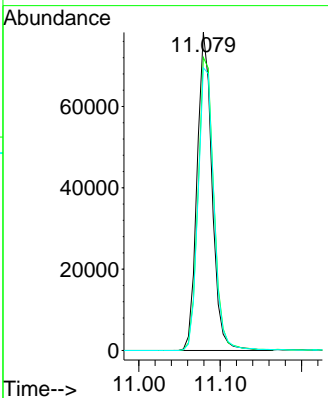
MSVOA\_X

ClientSampleId :

EB-01-050924

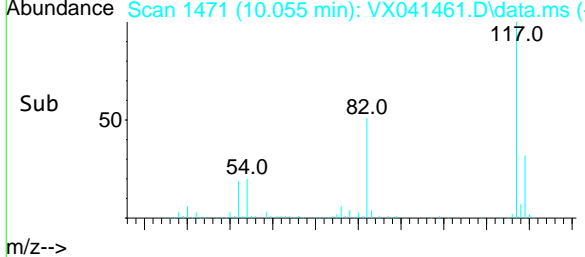
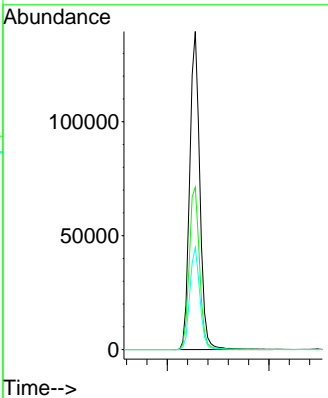
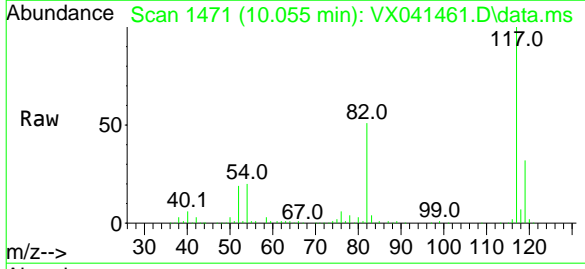


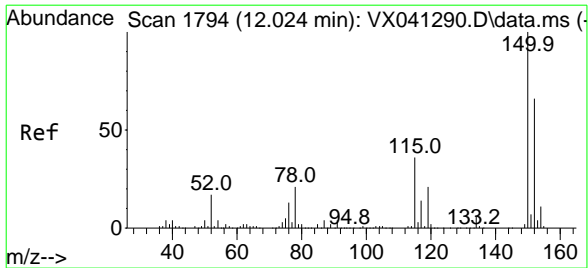
Tgt Ion	Resp	Lower	Upper
95	100		
174	96.8	0.0	135.6
176	94.3	0.0	131.0



#63  
 Chlorobenzene-d5  
 Concen: 50.000 ug/l  
 RT: 10.055 min Scan# 1471  
 Delta R.T. 0.000 min  
 Lab File: VX041461.D  
 Acq: 10 May 2024 16:11

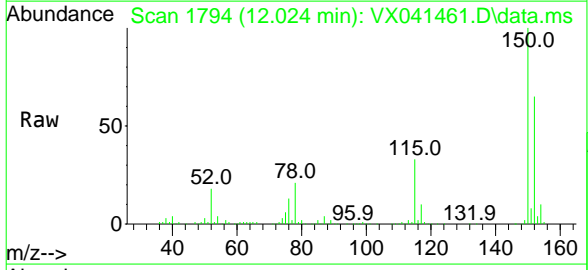
Tgt Ion	Resp	Lower	Upper
117	100		
82	51.1	46.2	69.4
119	32.1	25.5	38.3





#72  
 1,4-Dichlorobenzene-d4  
 Concen: 50.000 ug/l  
 RT: 12.024 min Scan# 17  
 Delta R.T. 0.000 min  
 Lab File: VX041461.D  
 Acq: 10 May 2024 16:11

Instrument : MSVOA\_X  
 ClientSampleId : EB-01-050924



Tgt Ion	Ratio	Lower	Upper
152	100		
115	53.6	43.3	129.9
150	157.5	0.0	345.0

