

Data Path : Z:\voasrv\HPCHEM1\MSVOA_X\Data\VX051124\
 Data File : VX041456.D
 Acq On : 10 May 2024 14:04
 Operator : JC/MD
 Sample : VX0511WBL02
 Misc : 5.0mL/MSVOA_X/WATER
 ALS Vial : 4 Sample Multiplier: 1

Instrument :
 MSVOA_X
 ClientSampleId :
 VX0511WBL02

Integration Parameters: RTEINT.P
 Integrator: RTE
 Smoothing : ON
 Sampling : 1
 Start Thrs: 0.2
 Stop Thrs : 0
 Filtering: 5
 Min Area: 3 % of largest Peak
 Max Peaks: 100
 Peak Location: TOP

If leading or trailing edge < 100 prefer < Baseline drop else tangent >
 Peak separation: 5

Method : Z:\voasrv\HPCHEM1\MSVOA_X\Method\82X043024W.M
 Title : SW846 8260

Signal : TIC: VX041456.D\data.ms

peak #	R.T. min	first scan	max scan	last scan	PK TY	peak height	corr. area	corr. % max.	% of total
1	1.575	69	80	81	rBV5	7234	18772	2.79%	0.504%
2	5.385	693	705	720	rBV	80373	235502	35.05%	6.328%
3	5.544	721	731	748	rVB	146064	419493	62.43%	11.271%
4	5.952	786	798	817	rBV2	83063	227405	33.85%	6.110%
5	6.757	919	930	949	rBV	212516	520891	77.53%	13.995%
6	8.647	1233	1240	1250	rBV	427319	671891	100.00%	18.053%
7	10.055	1465	1471	1486	rBV	416689	588953	87.66%	15.824%
8	11.079	1634	1639	1655	rBV	362996	476106	70.86%	12.792%
9	12.018	1788	1793	1805	rBV	428635	562834	83.77%	15.122%

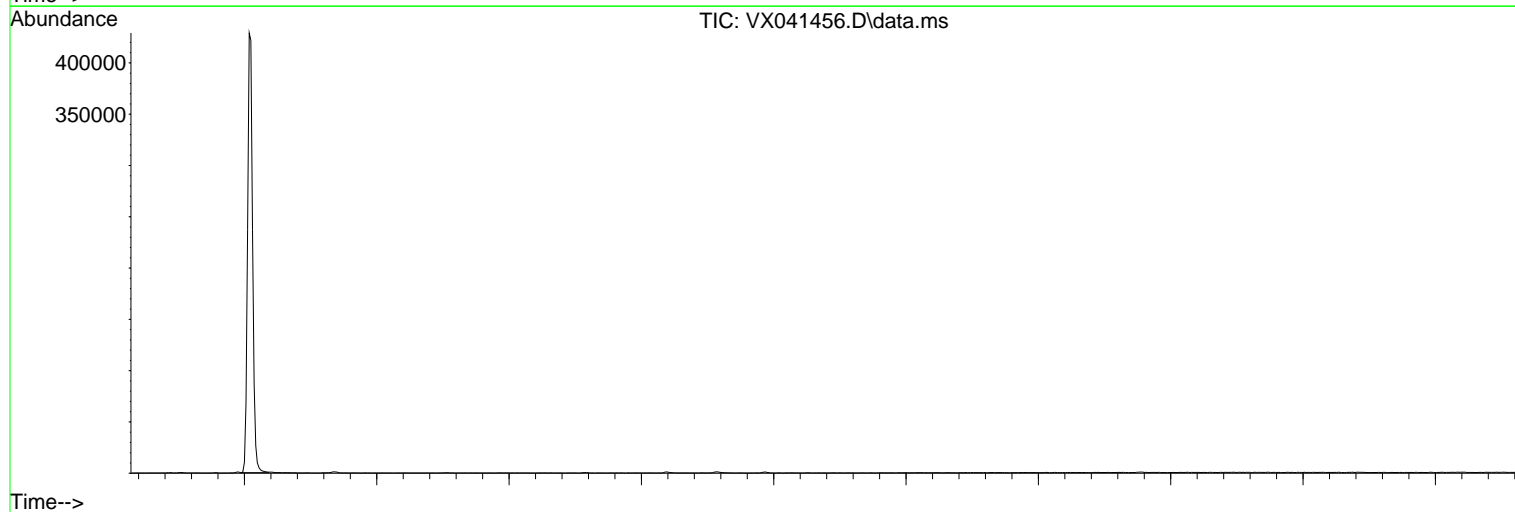
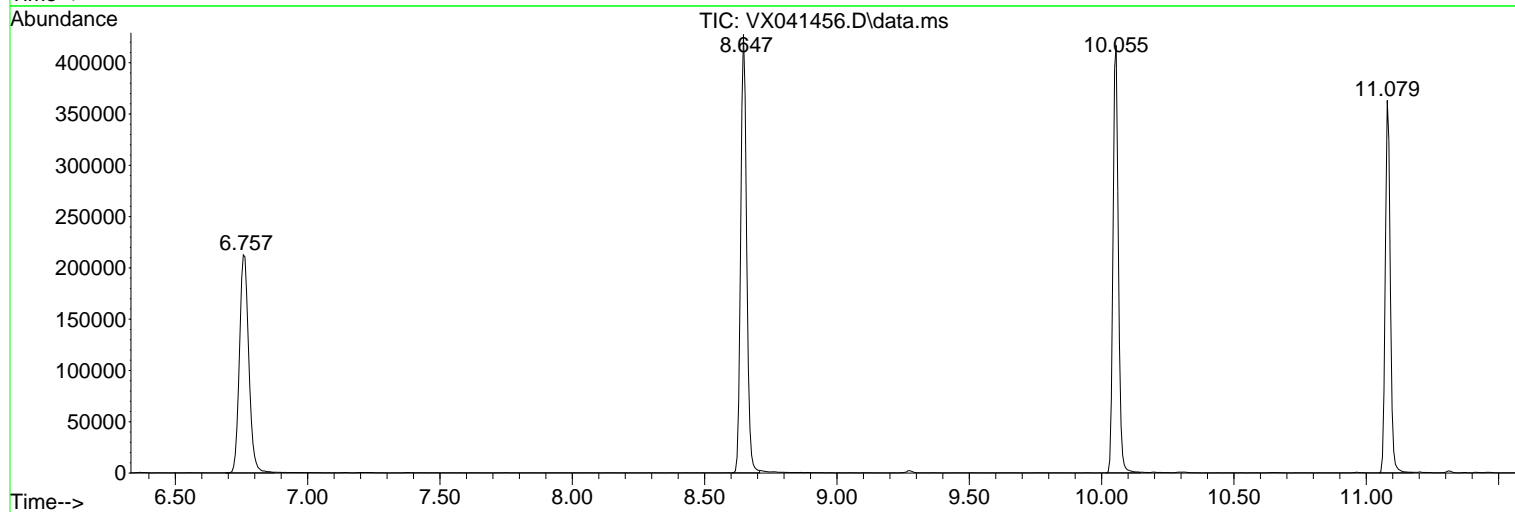
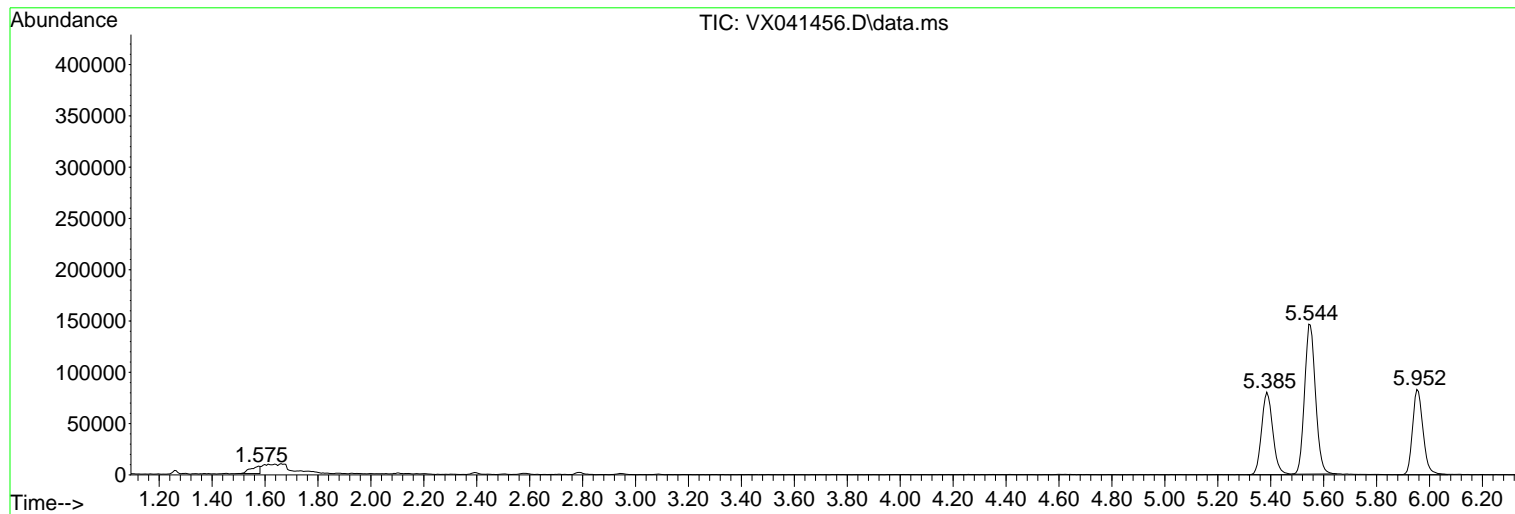
Sum of corrected areas: 3721847

Data Path : Z:\voasrv\HPCHEM1\MSVOA_X\Data\VX051124\
Data File : VX041456.D
Acq On : 10 May 2024 14:04
Operator : JC/MD
Sample : VX0511WBL02
Misc : 5.0mL/MSVOA_X/WATER
ALS Vial : 4 Sample Multiplier: 1

Instrument :
MSVOA_X
ClientSampleId :
VX0511WBL02

Quant Method : Z:\voasrv\HPCHEM1\MSVOA_X\Method\82X043024W.M
Quant Title : SW846 8260

TIC Library : C:\Database\NIST20.L
TIC Integration Parameters: LSCINT.P



Data Path : Z:\voasrv\HPCHEM1\MSVOA_X\Data\VX051124\
Data File : VX041456.D
Acq On : 10 May 2024 14:04
Operator : JC/MD
Sample : VX0511WBL02
Misc : 5.0mL/MSVOA_X/WATER
ALS Vial : 4 Sample Multiplier: 1

Instrument :
MSVOA_X
ClientSampleId :
VX0511WBL02

Quant Method : Z:\voasrv\HPCHEM1\MSVOA_X\Method\82X043024W.M
Quant Title : SW846 8260

TIC Library : C:\Database\NIST20.L
TIC Integration Parameters: LSCINT.P

No Library Search Compounds Detected

Data Path : Z:\voasrv\HPCHEM1\MSVOA_X\Data\VX051124\
Data File : VX041456.D
Acq On : 10 May 2024 14:04
Operator : JC/MD
Sample : VX0511WBL02
Misc : 5.0mL/MSVOA_X/WATER
ALS Vial : 4 Sample Multiplier: 1

Instrument :
MSVOA_X
ClientSampleId :
VX0511WBL02

Quant Method : Z:\voasrv\HPCHEM1\MSVOA_X\Method\82X043024W.M
Quant Title : SW846 8260

TIC Library : C:\Database\NIST20.L
TIC Integration Parameters: LSCINT.P

TIC Top Hit name	RT	EstConc	Units	Response	#	RT	Resp	Conc
------------------	----	---------	-------	----------	---	----	------	------

-----|