

Data Path : Z:\voasrv\HPCHEM1\MSVOA\_X\Data\VX051225\  
 Data File : VX046133.D  
 Acq On : 12 May 2025 13:12  
 Operator : JC/MD  
 Sample : Q1983-18  
 Misc : 5.0mL/MSVOA\_X/WATER  
 ALS Vial : 10 Sample Multiplier: 1

Instrument :  
 MSVOA\_X  
 ClientSampleId :  
 OR-636-COMP-03

Quant Time: May 13 03:17:20 2025  
 Quant Method : Z:\voasrv\HPCHEM1\MSVOA\_X\Method\82X050525W.M  
 Quant Title : SW846 8260  
 QLast Update : Tue May 06 07:12:22 2025  
 Response via : Initial Calibration

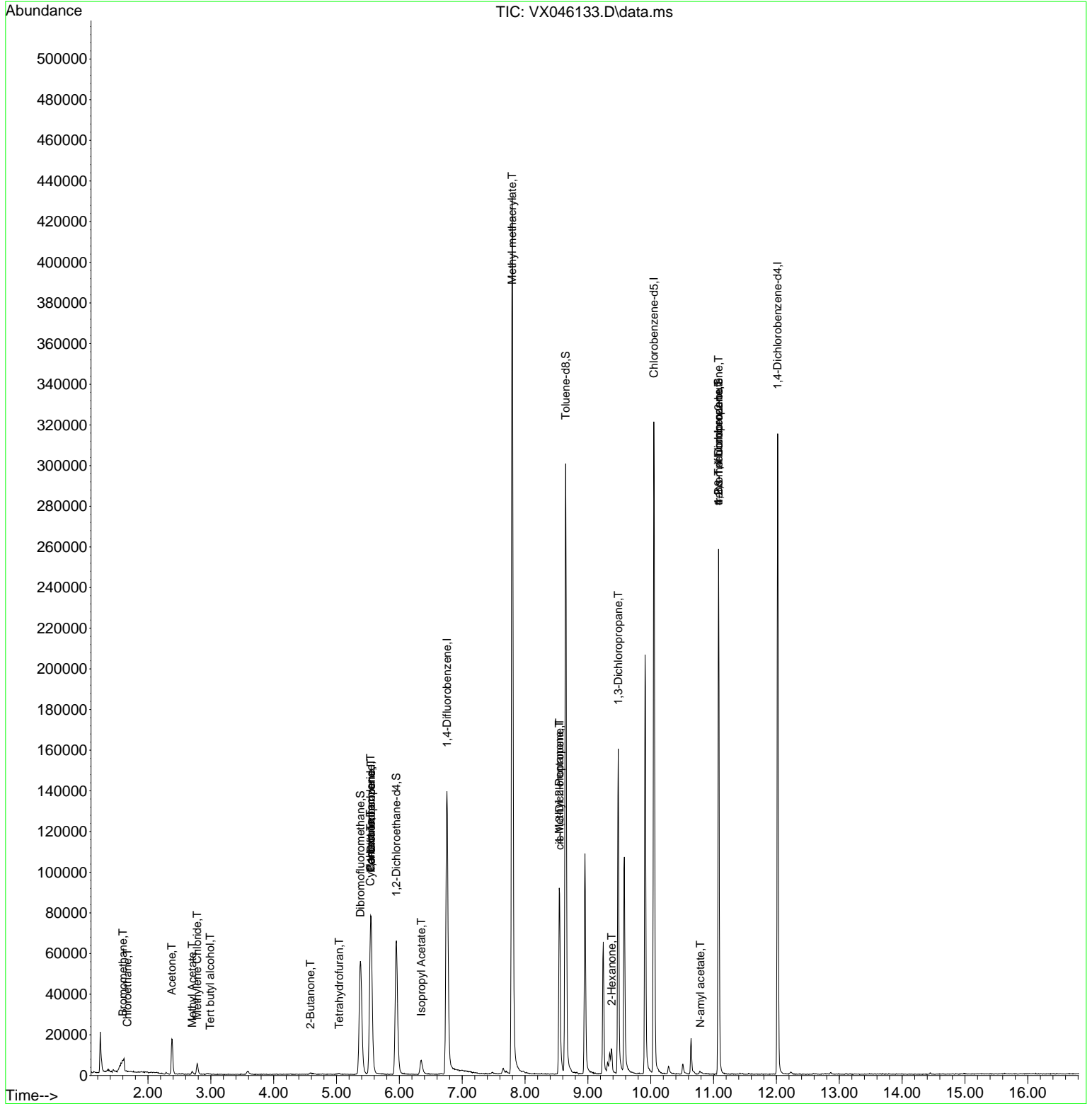
Compound	R.T.	QIon	Response	Conc	Units	Dev(Min)
-----						
Internal Standards						
1) Pentafluorobenzene	5.550	168	66694	50.000	ug/l	0.00
34) 1,4-Difluorobenzene	6.757	114	135660	50.000	ug/l	0.00
63) Chlorobenzene-d5	10.049	117	130488	50.000	ug/l	0.00
72) 1,4-Dichlorobenzene-d4	12.018	152	58030	50.000	ug/l	0.00
System Monitoring Compounds						
33) 1,2-Dichloroethane-d4	5.952	65	67171	54.022	ug/l	0.00
Spiked Amount	50.000	Range 74 - 125	Recovery	=	108.040%	
35) Dibromofluoromethane	5.379	113	49935	51.116	ug/l	0.00
Spiked Amount	50.000	Range 75 - 124	Recovery	=	102.240%	
50) Toluene-d8	8.647	98	173440	51.296	ug/l	0.00
Spiked Amount	50.000	Range 86 - 113	Recovery	=	102.600%	
62) 4-Bromofluorobenzene	11.079	95	67308	51.896	ug/l	0.00
Spiked Amount	50.000	Range 77 - 121	Recovery	=	103.800%	
Target Compounds						
						Qvalue
5) Bromomethane	1.599	94	112	0.262	ug/l #	61
6) Chloroethane	1.673	64	244	0.496	ug/l #	44
11) Tert butyl alcohol	2.989	59	283	1.621	ug/l #	72
16) Acetone	2.380	43	19585	39.285	ug/l	96
18) Methyl Acetate	2.703	43	1811	1.565	ug/l	92
20) Methylene Chloride	2.782	84	2513	2.630	ug/l	96
25) 2-Butanone	4.587	43	1372	1.896	ug/l	92
29) Tetrahydrofuran	5.044	42	457	1.008	ug/l #	58
31) Cyclohexane	5.538	56	1966	1.327	ug/l #	41
36) 1,1-Dichloropropene	5.550	75	6551	4.991	ug/l #	53
38) Carbon Tetrachloride	5.544	117	7989	5.417	ug/l #	17
43) Isopropyl Acetate	6.348	43	10574	4.274	ug/l	99
48) Methyl methacrylate	7.793	41	43717	34.601	ug/l #	48
51) 4-Methyl-2-Pentanone	8.543	43	36161	22.020	ug/l #	52
54) cis-1,3-Dichloropropene	8.549	75	14692	10.071	ug/l #	61
57) 1,3-Dichloropropane	9.482	76	1239	0.742	ug/l #	42
59) 2-Hexanone	9.378	43	10960	9.021	ug/l #	28
74) N-amyl acetate	10.787	43	985	0.441	ug/l #	47
76) 1,2,3-Trichloropropane	11.079	75	38431	27.513	ug/l #	36
81) trans-1,4-Dichloro-2-b...	11.079	75	38431	89.575	ug/l #	1
-----						

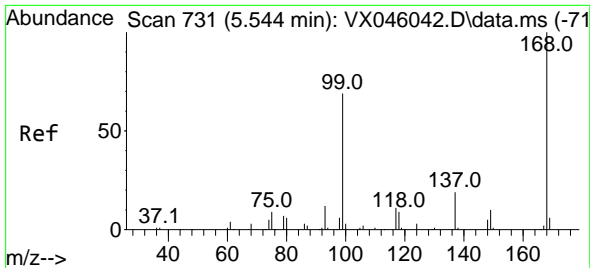
(#) = qualifier out of range (m) = manual integration (+) = signals summed

Data Path : Z:\voasrv\HPCHEM1\MSVOA\_X\Data\VX051225\  
 Data File : VX046133.D  
 Acq On : 12 May 2025 13:12  
 Operator : JC/MD  
 Sample : Q1983-18  
 Misc : 5.0mL/MSVOA\_X/WATER  
 ALS Vial : 10 Sample Multiplier: 1

**Instrument :**  
 MSVOA\_X  
**ClientSampleId :**  
 OR-636-COMP-03

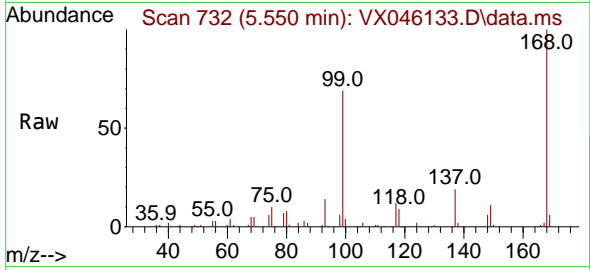
Quant Time: May 13 03:17:20 2025  
 Quant Method : Z:\voasrv\HPCHEM1\MSVOA\_X\Method\82X050525W.M  
 Quant Title : SW846 8260  
 QLast Update : Tue May 06 07:12:22 2025  
 Response via : Initial Calibration



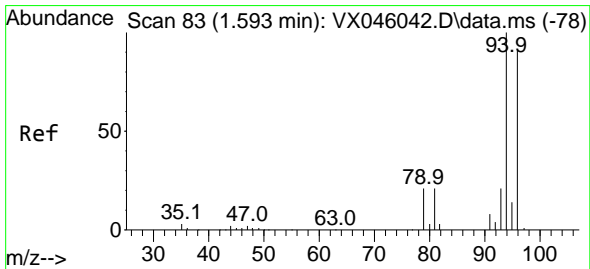
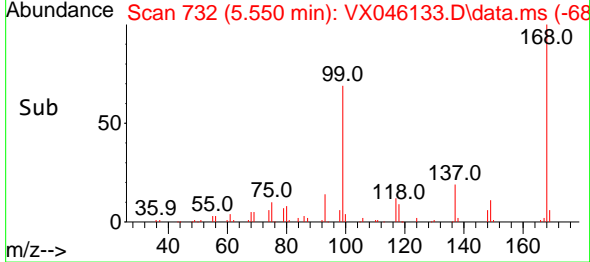
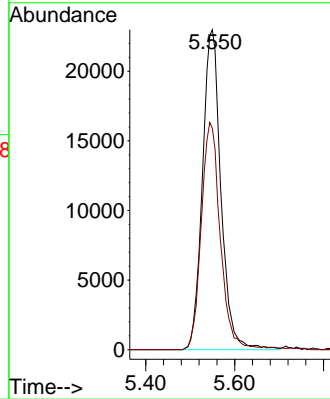


#1  
 Pentafluorobenzene  
 Concen: 50.000 ug/l  
 RT: 5.550 min Scan# 71  
 Delta R.T. 0.006 min  
 Lab File: VX046133.D  
 Acq: 12 May 2025 13:12

Instrument :  
 MSVOA\_X  
 ClientSampleId :  
 OR-636-COMP-03

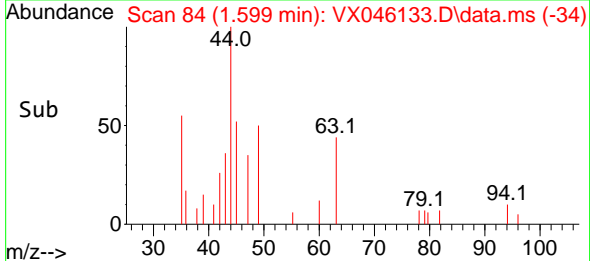
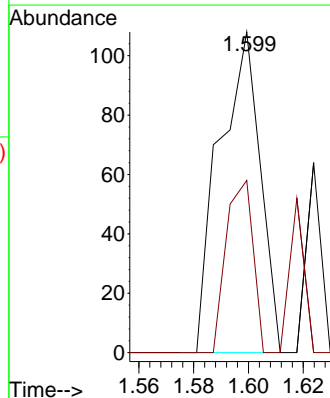
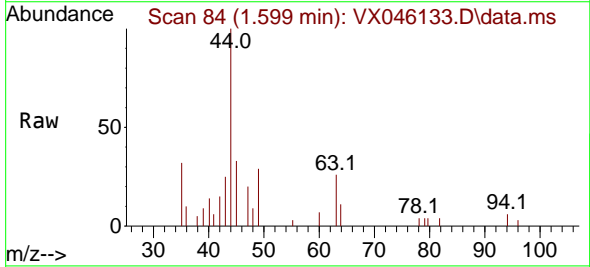


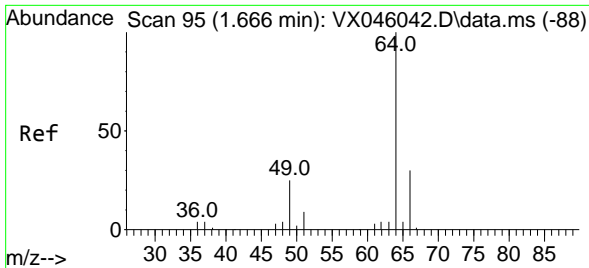
Tgt Ion:168 Resp: 66694  
 Ion Ratio Lower Upper  
 168 100  
 99 69.2 54.9 82.3



#5  
 Bromomethane  
 Concen: 0.262 ug/l  
 RT: 1.599 min Scan# 84  
 Delta R.T. 0.006 min  
 Lab File: VX046133.D  
 Acq: 12 May 2025 13:12

Tgt Ion: 94 Resp: 112  
 Ion Ratio Lower Upper  
 94 100  
 96 53.7 72.8 109.2#

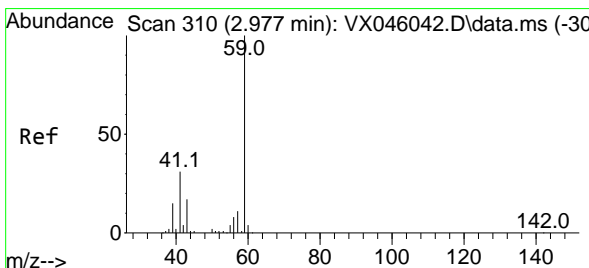
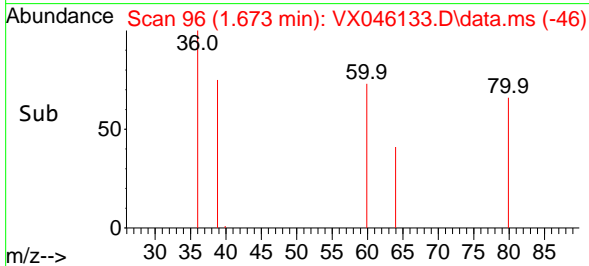
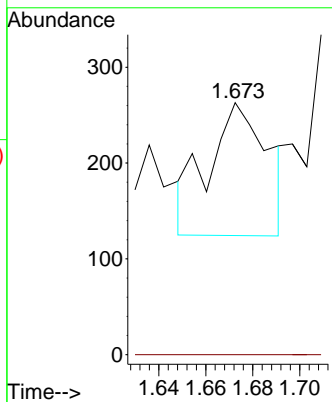
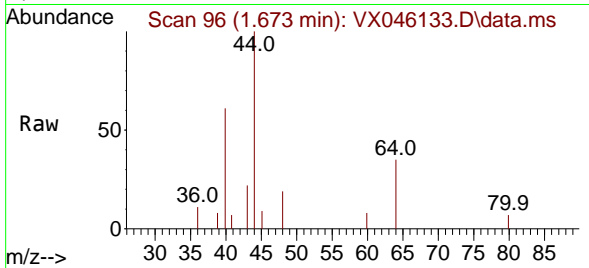




#6  
 Chloroethane  
 Concen: 0.496 ug/l  
 RT: 1.673 min Scan# 90  
 Delta R.T. 0.006 min  
 Lab File: VX046133.D  
 Acq: 12 May 2025 13:12

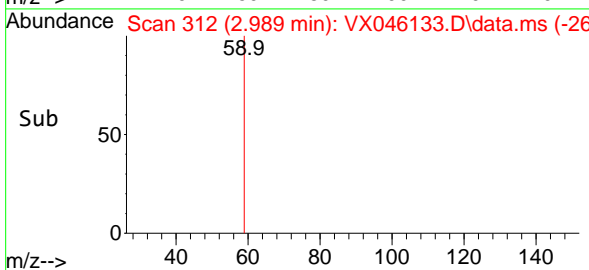
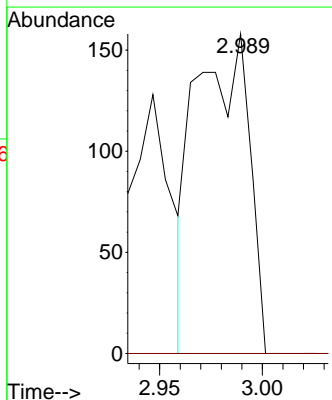
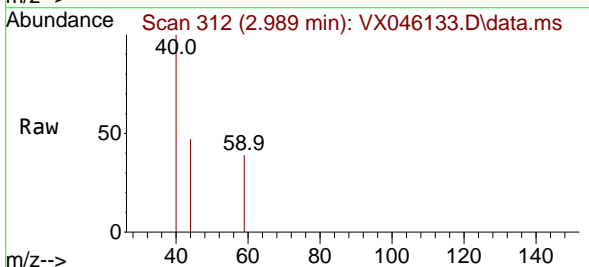
Instrument :  
 MSVOA\_X  
 ClientSampleId :  
 OR-636-COMP-03

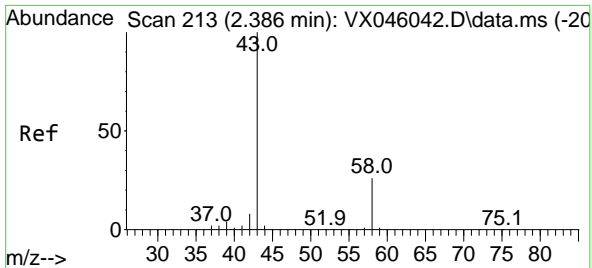
Tgt Ion: 64 Resp: 244  
 Ion Ratio Lower Upper  
 64 100  
 66 0.0 24.3 36.5#



#11  
 Tert butyl alcohol  
 Concen: 1.621 ug/l  
 RT: 2.989 min Scan# 312  
 Delta R.T. 0.012 min  
 Lab File: VX046133.D  
 Acq: 12 May 2025 13:12

Tgt Ion: 59 Resp: 283  
 Ion Ratio Lower Upper  
 59 100  
 57 0.0 8.6 12.8#

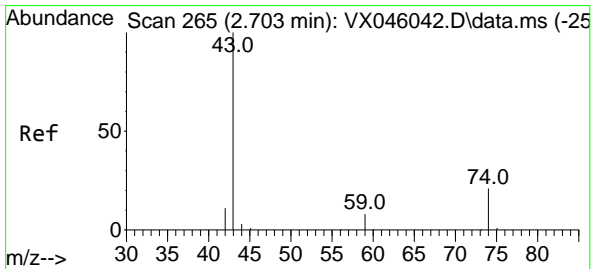
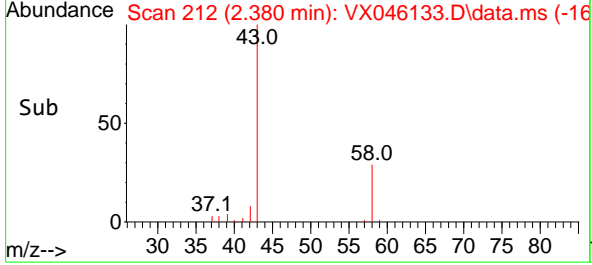
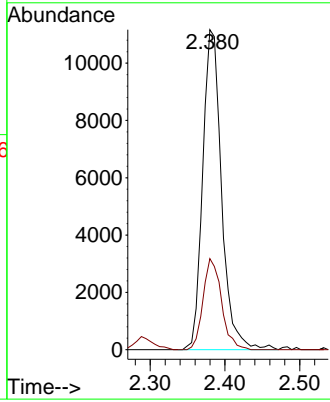
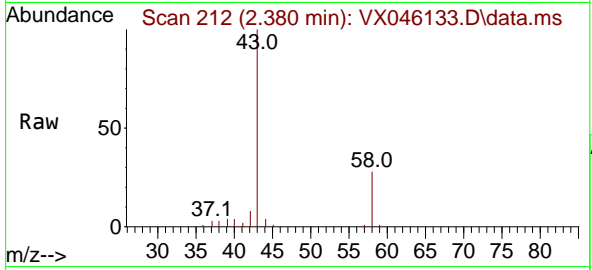




#16  
 Acetone  
 Concen: 39.285 ug/l  
 RT: 2.380 min Scan# 213  
 Delta R.T. -0.006 min  
 Lab File: VX046133.D  
 Acq: 12 May 2025 13:12

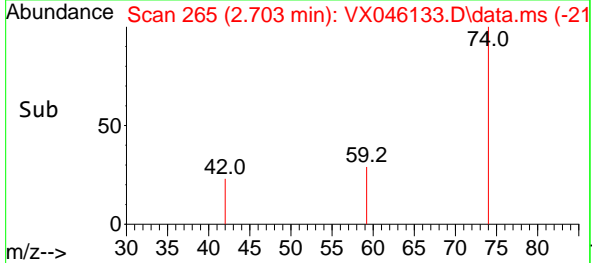
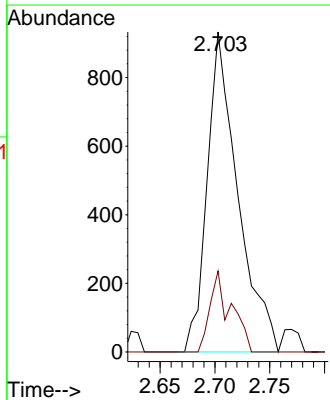
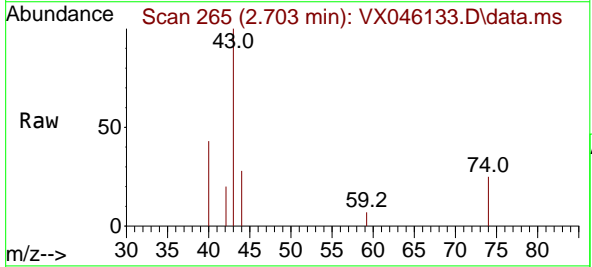
Instrument : MSVOA\_X  
 ClientSampleId : OR-636-COMP-03

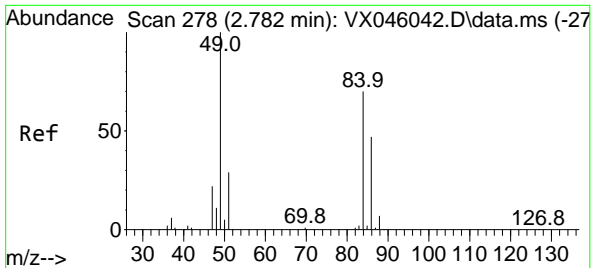
Tgt Ion: 43 Resp: 19585  
 Ion Ratio Lower Upper  
 43 100  
 58 28.5 21.2 31.8



#18  
 Methyl Acetate  
 Concen: 1.565 ug/l  
 RT: 2.703 min Scan# 265  
 Delta R.T. 0.000 min  
 Lab File: VX046133.D  
 Acq: 12 May 2025 13:12

Tgt Ion: 43 Resp: 1811  
 Ion Ratio Lower Upper  
 43 100  
 74 17.3 16.7 25.1

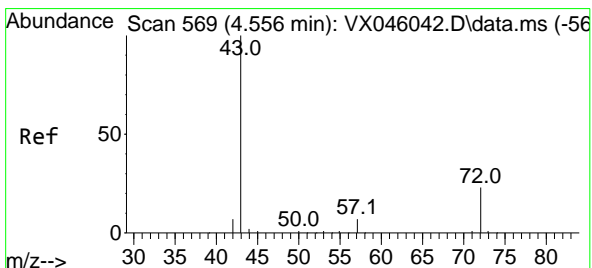
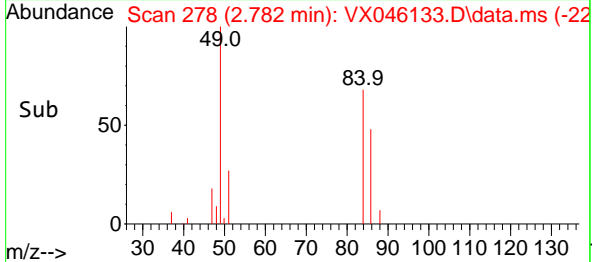
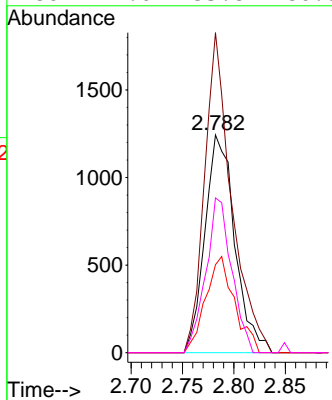
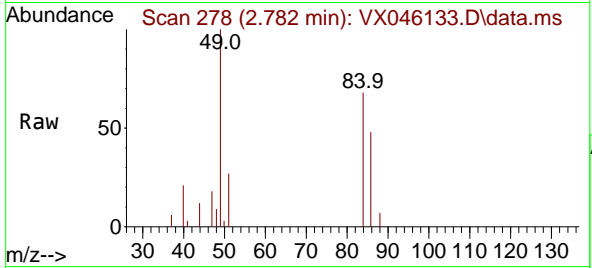




#20  
 Methylene Chloride  
 Concen: 2.630 ug/l  
 RT: 2.782 min Scan# 21  
 Delta R.T. 0.000 min  
 Lab File: VX046133.D  
 Acq: 12 May 2025 13:12

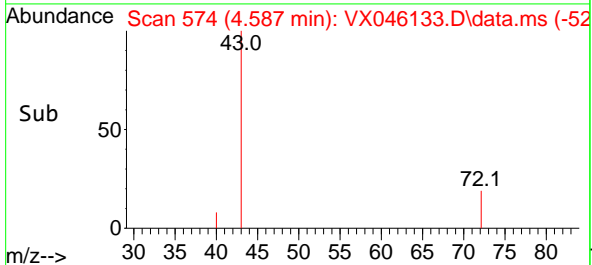
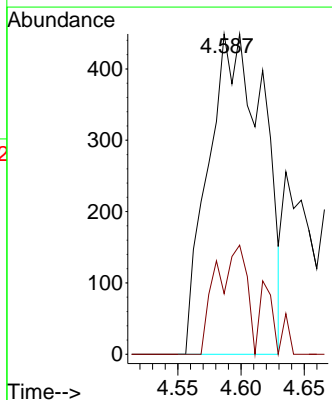
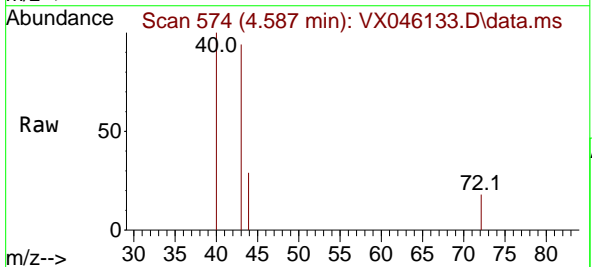
Instrument :  
 MSVOA\_X  
 ClientSampleId :  
 OR-636-COMP-03

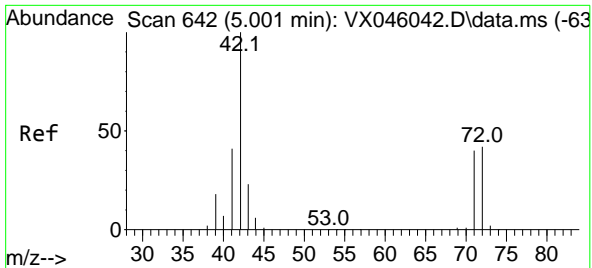
Tgt Ion	Resp	Lower	Upper
84	2513		
49	147.0	113.9	170.9
51	40.4	33.5	50.3
86	71.0	53.8	80.8



#25  
 2-Butanone  
 Concen: 1.896 ug/l  
 RT: 4.587 min Scan# 574  
 Delta R.T. 0.031 min  
 Lab File: VX046133.D  
 Acq: 12 May 2025 13:12

Tgt Ion	Resp	Lower	Upper
43	1372		
72	18.9	18.4	27.6

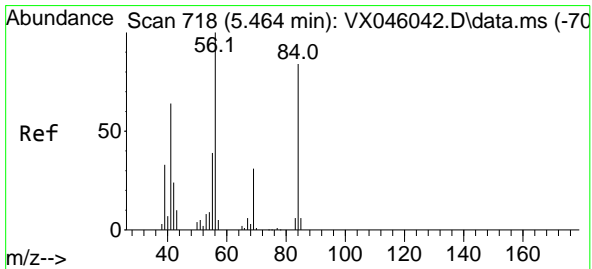
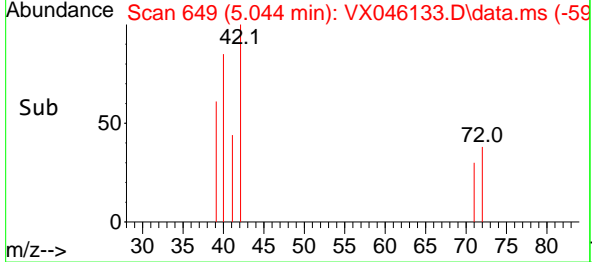
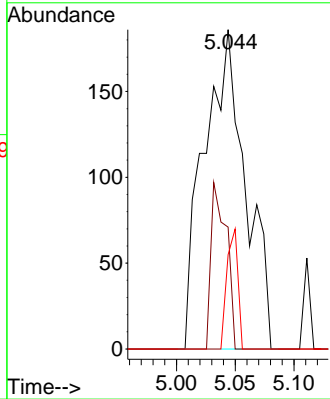
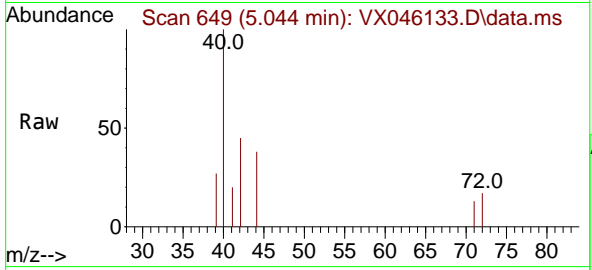




#29  
 Tetrahydrofuran  
 Concen: 1.008 ug/l  
 RT: 5.044 min Scan# 64  
 Delta R.T. 0.043 min  
 Lab File: VX046133.D  
 Acq: 12 May 2025 13:12

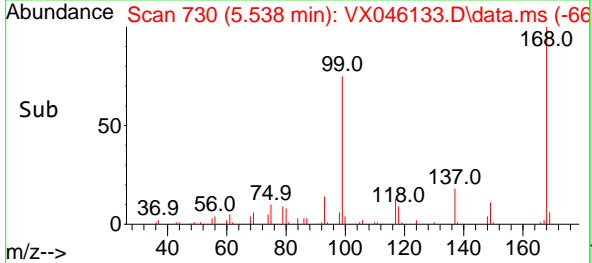
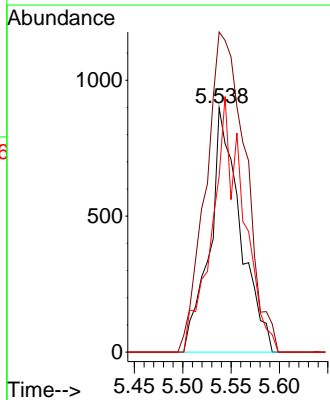
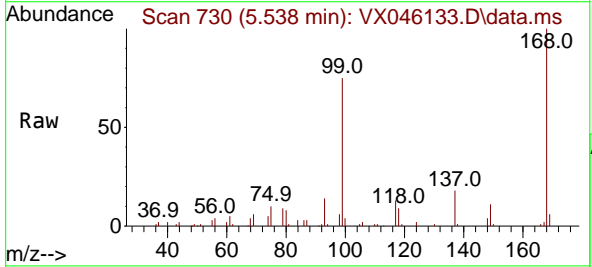
Instrument : MSVOA\_X  
 ClientSampleId : OR-636-COMP-03

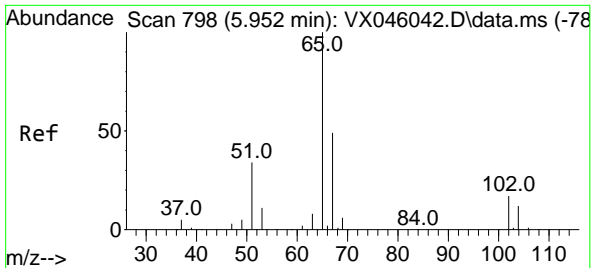
Tgt Ion	Resp	Lower	Upper
42	100		
72	19.3	33.7	50.5#
71	10.1	31.4	47.2#



#31  
 Cyclohexane  
 Concen: 1.327 ug/l  
 RT: 5.538 min Scan# 730  
 Delta R.T. 0.073 min  
 Lab File: VX046133.D  
 Acq: 12 May 2025 13:12

Tgt Ion	Resp	Lower	Upper
56	100		
69	131.0	24.4	36.6#
84	72.1	66.9	100.3

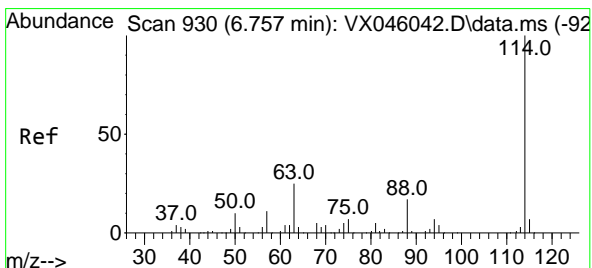
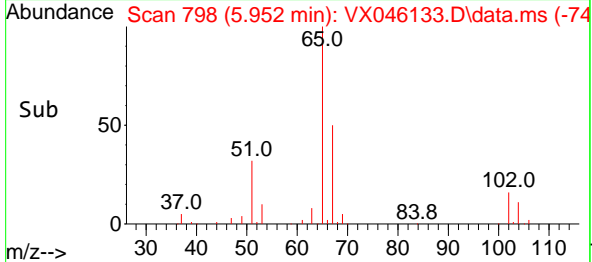
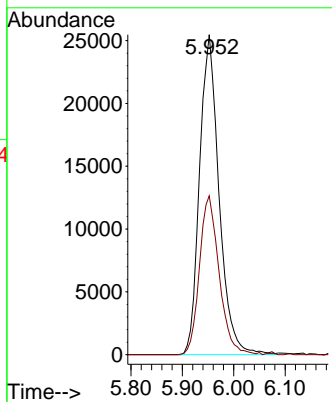
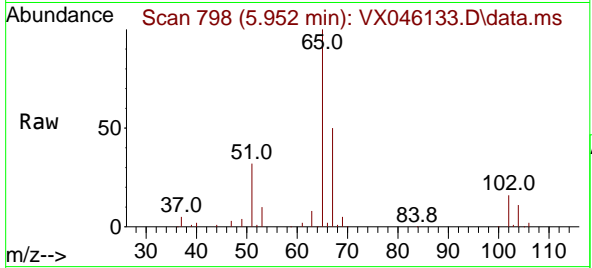




#33  
 1,2-Dichloroethane-d4  
 Concen: 54.022 ug/l  
 RT: 5.952 min Scan# 798  
 Delta R.T. 0.000 min  
 Lab File: VX046133.D  
 Acq: 12 May 2025 13:12

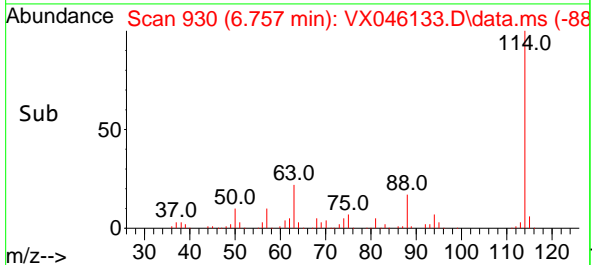
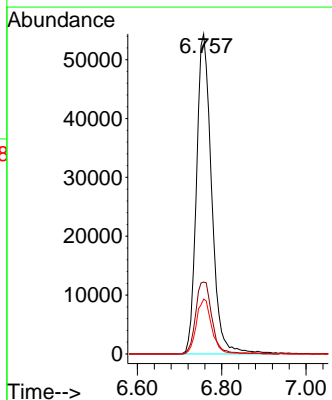
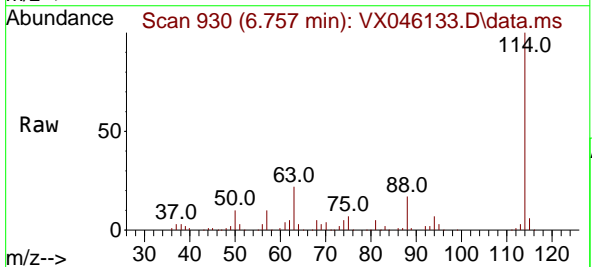
Instrument : MSVOA\_X  
 ClientSampleId : OR-636-COMP-03

Tgt Ion: 65 Resp: 67171  
 Ion Ratio Lower Upper  
 65 100  
 67 50.0 0.0 99.0

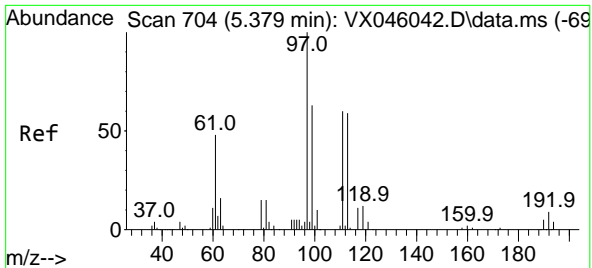


#34  
 1,4-Difluorobenzene  
 Concen: 50.000 ug/l  
 RT: 6.757 min Scan# 930  
 Delta R.T. 0.000 min  
 Lab File: VX046133.D  
 Acq: 12 May 2025 13:12

Tgt Ion: 114 Resp: 135660  
 Ion Ratio Lower Upper  
 114 100  
 63 22.4 0.0 49.2  
 88 17.1 0.0 33.6

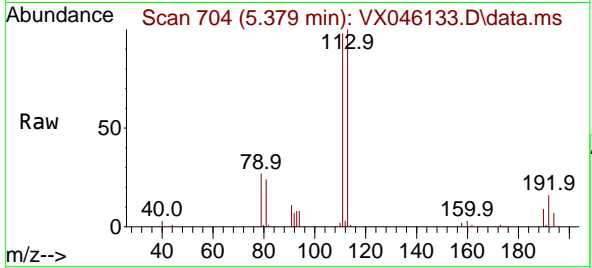






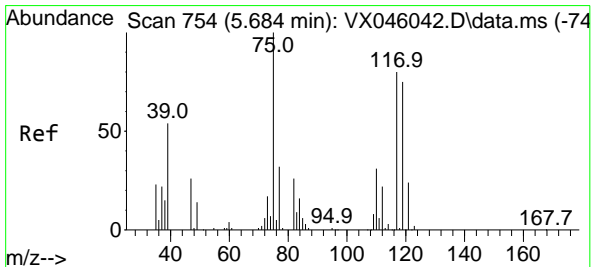
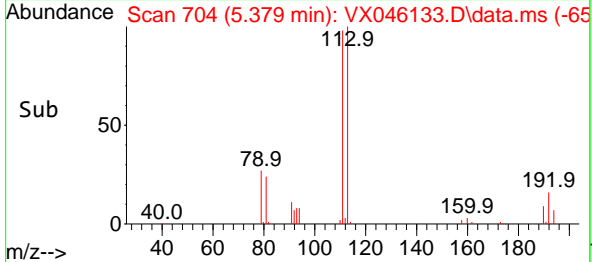
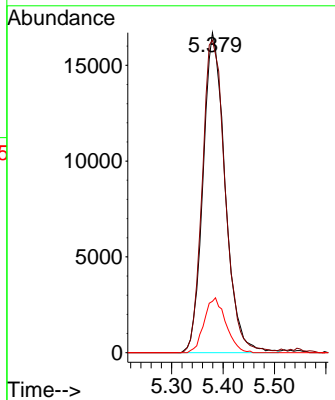
#35  
 Dibromofluoromethane  
 Concen: 51.116 ug/l  
 RT: 5.379 min Scan# 704  
 Delta R.T. 0.000 min  
 Lab File: VX046133.D  
 Acq: 12 May 2025 13:12

Instrument : MSVOA\_X  
 ClientSampleId : OR-636-COMP-03

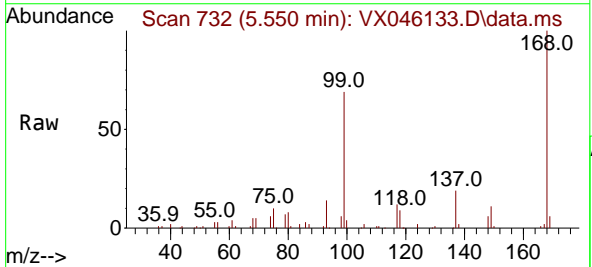


Tgt Ion: 113 Resp: 49935

Ion	Ratio	Lower	Upper
113	100		
111	101.3	83.1	124.7
192	16.8	13.3	19.9

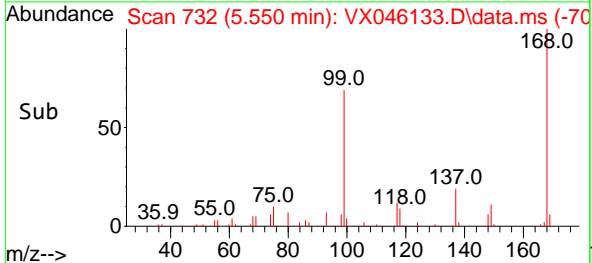
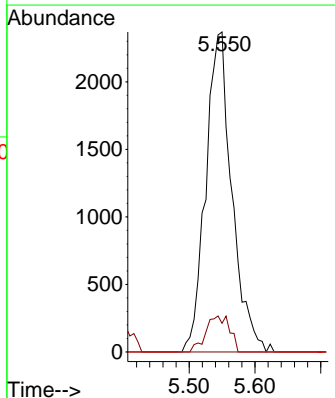


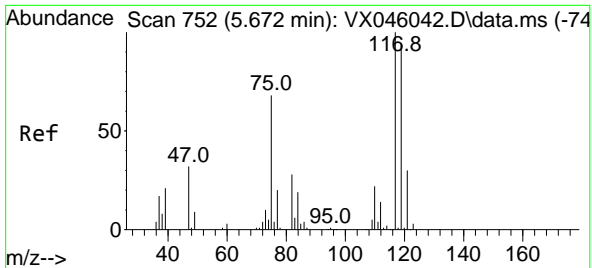
#36  
 1,1-Dichloropropene  
 Concen: 4.991 ug/l  
 RT: 5.550 min Scan# 732  
 Delta R.T. -0.134 min  
 Lab File: VX046133.D  
 Acq: 12 May 2025 13:12



Tgt Ion: 75 Resp: 6551

Ion	Ratio	Lower	Upper
75	100		
110	10.3	16.3	48.9#
77	0.0	24.3	36.5#

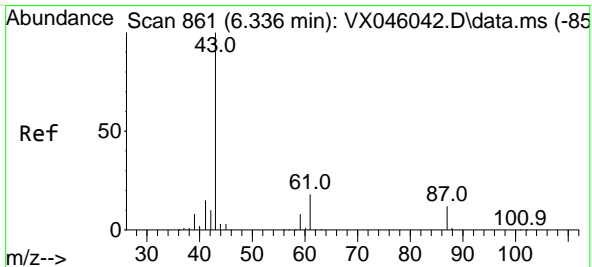
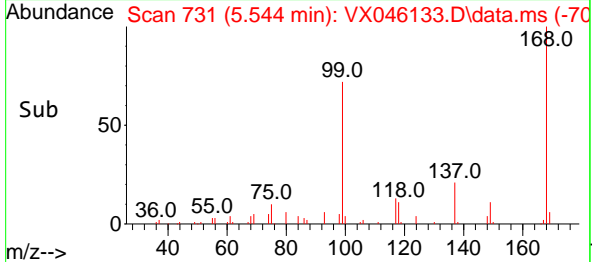
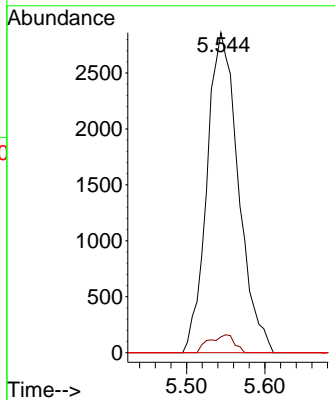
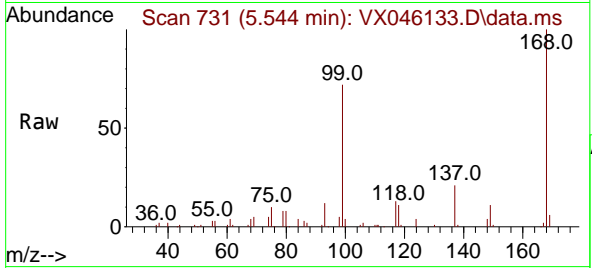




#38  
 Carbon Tetrachloride  
 Concen: 5.417 ug/l  
 RT: 5.544 min Scan# 711  
 Delta R.T. -0.128 min  
 Lab File: VX046133.D  
 Acq: 12 May 2025 13:12

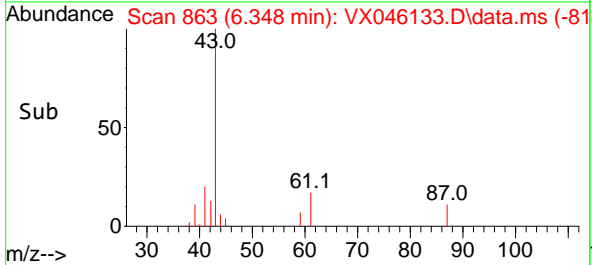
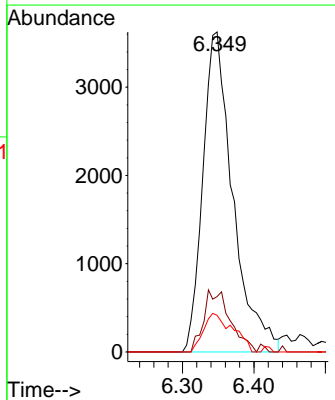
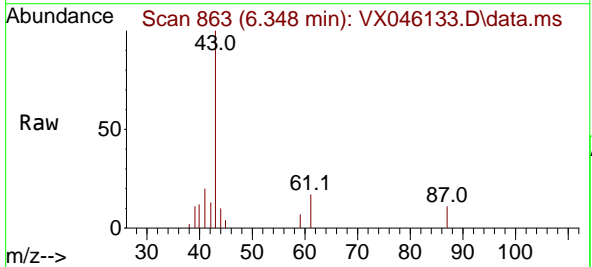
Instrument : MSVOA\_X  
 ClientSampleId : OR-636-COMP-03

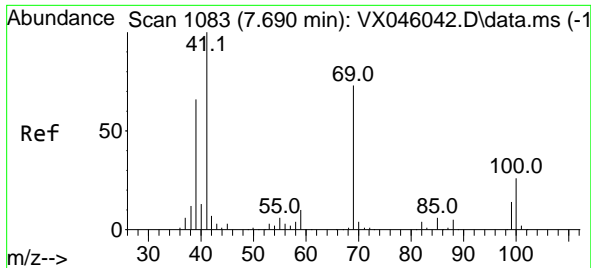
Tgt Ion	Resp	Lower	Upper
117	7989		
117	100		
119	5.0	75.2	112.8#
121	0.0	24.2	36.4#



#43  
 Isopropyl Acetate  
 Concen: 4.274 ug/l  
 RT: 6.348 min Scan# 863  
 Delta R.T. 0.012 min  
 Lab File: VX046133.D  
 Acq: 12 May 2025 13:12

Tgt Ion	Resp	Lower	Upper
43	10574		
43	100		
61	17.0	14.3	21.5
87	11.7	9.5	14.3

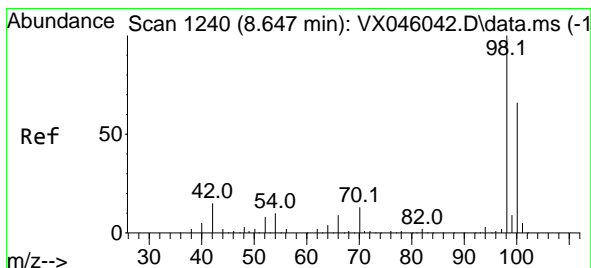
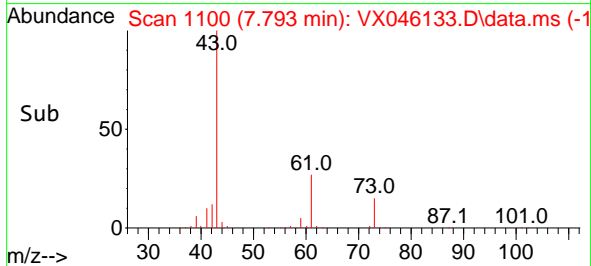
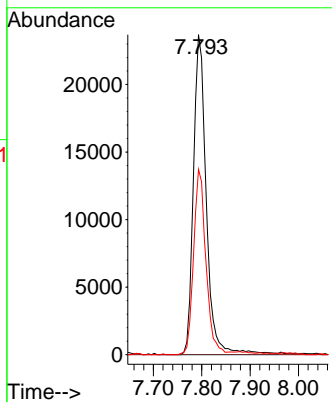
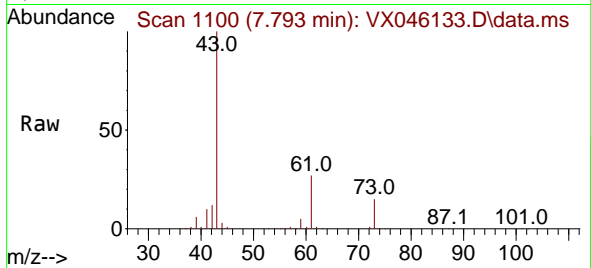




#48  
 Methyl methacrylate  
 Concen: 34.601 ug/l  
 RT: 7.793 min Scan# 1100  
 Delta R.T. 0.104 min  
 Lab File: VX046133.D  
 Acq: 12 May 2025 13:12

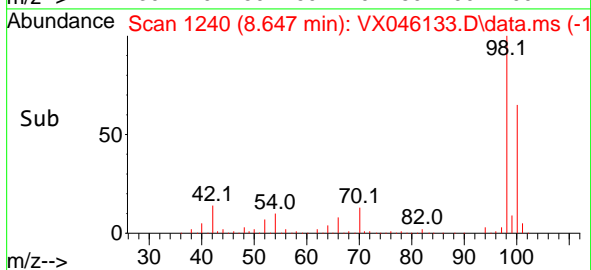
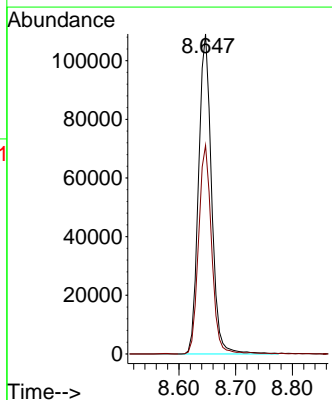
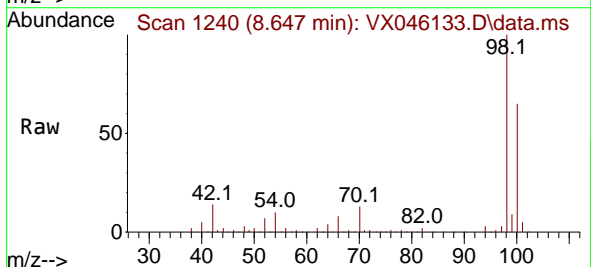
Instrument :  
 MSVOA\_X  
 ClientSampleId :  
 OR-636-COMP-03

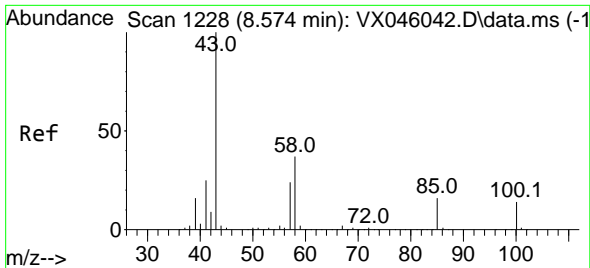
Tgt Ion: 41 Resp: 43717  
 Ion Ratio Lower Upper  
 41 100  
 69 0.0 58.5 87.7#  
 39 55.4 51.7 77.5



#50  
 Toluene-d8  
 Concen: 51.296 ug/l  
 RT: 8.647 min Scan# 1240  
 Delta R.T. 0.000 min  
 Lab File: VX046133.D  
 Acq: 12 May 2025 13:12

Tgt Ion: 98 Resp: 173440  
 Ion Ratio Lower Upper  
 98 100  
 100 65.1 53.5 80.3

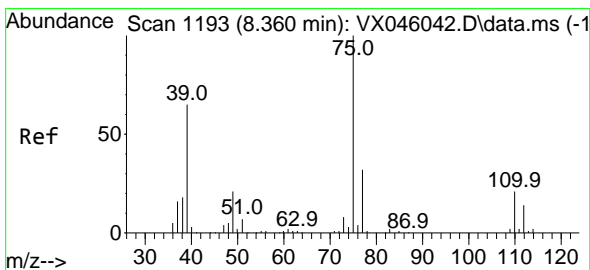
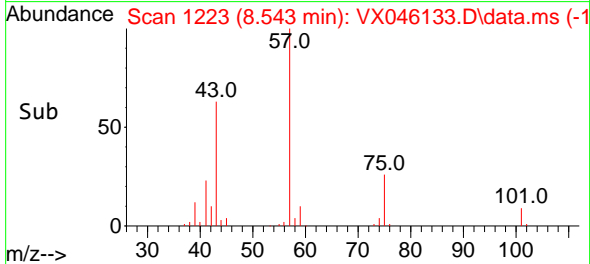
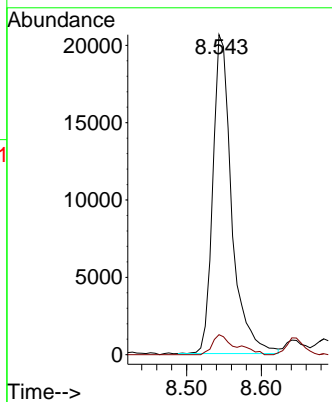
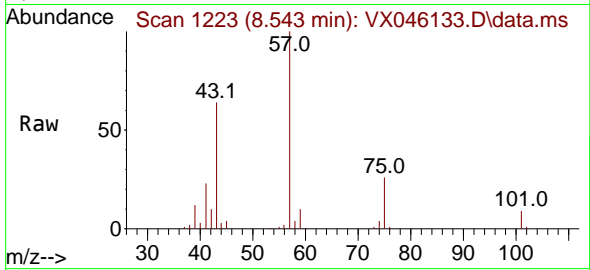




#51  
 4-Methyl-2-Pentanone  
 Concen: 22.020 ug/l  
 RT: 8.543 min Scan# 1122  
 Delta R.T. -0.030 min  
 Lab File: VX046133.D  
 Acq: 12 May 2025 13:12

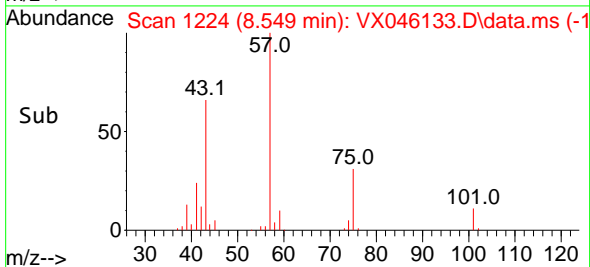
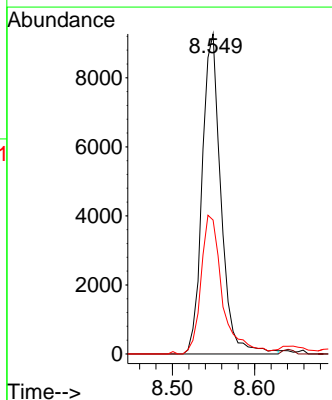
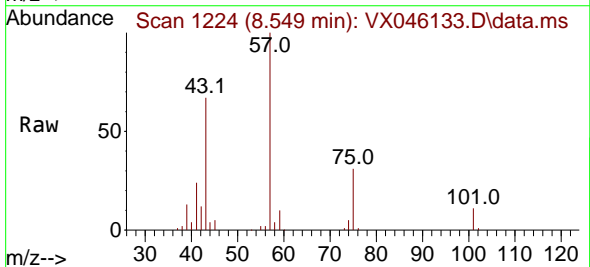
Instrument : MSVOA\_X  
 ClientSampleId : OR-636-COMP-03

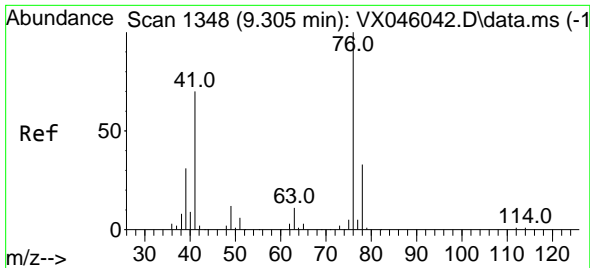
Tgt Ion: 43 Resp: 36161  
 Ion Ratio Lower Upper  
 43 100  
 58 7.7 28.9 43.3#



#54  
 cis-1,3-Dichloropropene  
 Concen: 10.071 ug/l  
 RT: 8.549 min Scan# 1224  
 Delta R.T. 0.189 min  
 Lab File: VX046133.D  
 Acq: 12 May 2025 13:12

Tgt Ion: 75 Resp: 14692  
 Ion Ratio Lower Upper  
 75 100  
 77 0.0 25.4 38.0#  
 39 41.9 52.2 78.4#

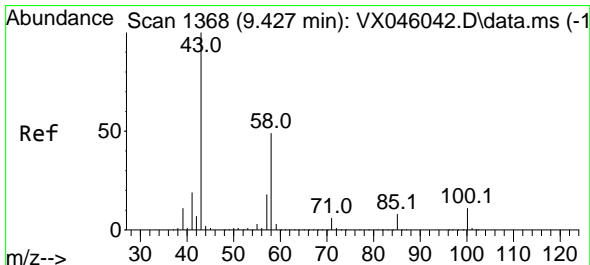
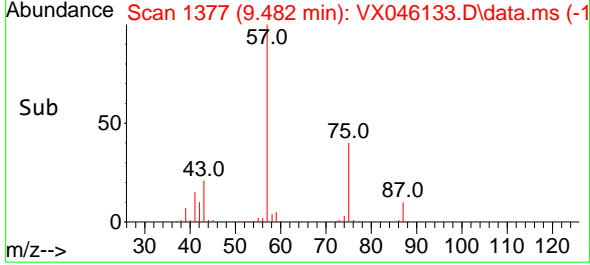
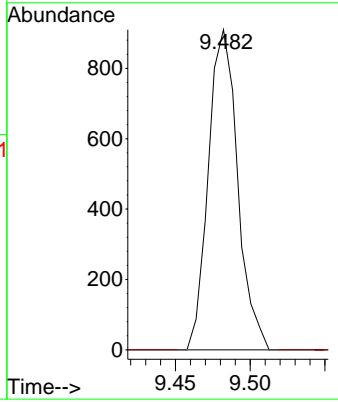
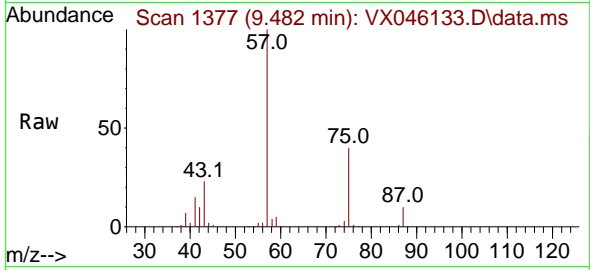




#57  
 1,3-Dichloropropane  
 Concen: 0.742 ug/l  
 RT: 9.482 min Scan# 1377  
 Delta R.T. 0.177 min  
 Lab File: VX046133.D  
 Acq: 12 May 2025 13:12

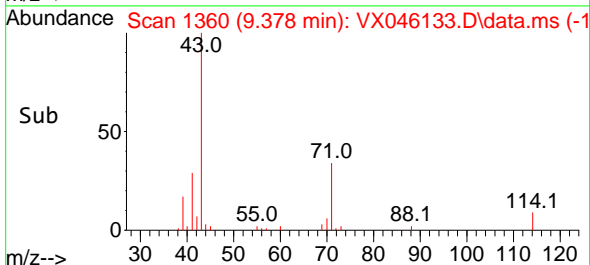
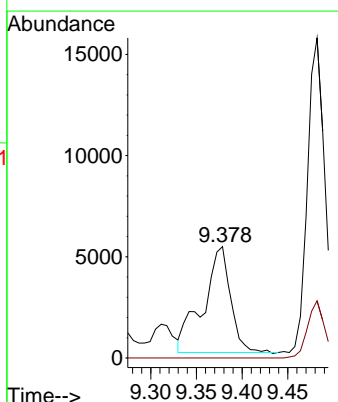
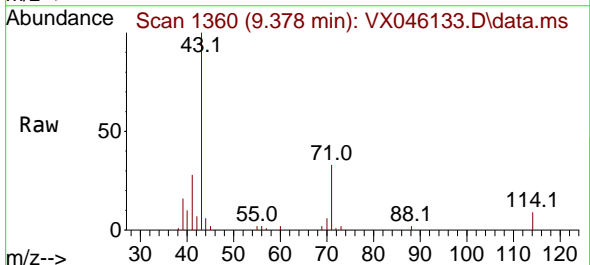
Instrument : MSVOA\_X  
 ClientSampleId : OR-636-COMP-03

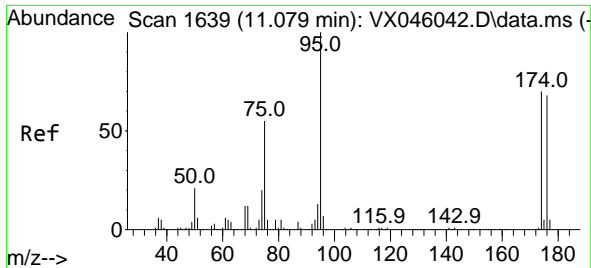
Tgt Ion: 76 Resp: 1239  
 Ion Ratio Lower Upper  
 76 100  
 78 0.0 26.3 39.5#



#59  
 2-Hexanone  
 Concen: 9.021 ug/l  
 RT: 9.378 min Scan# 1360  
 Delta R.T. -0.049 min  
 Lab File: VX046133.D  
 Acq: 12 May 2025 13:12

Tgt Ion: 43 Resp: 10960  
 Ion Ratio Lower Upper  
 43 100  
 58 0.0 24.9 74.6#



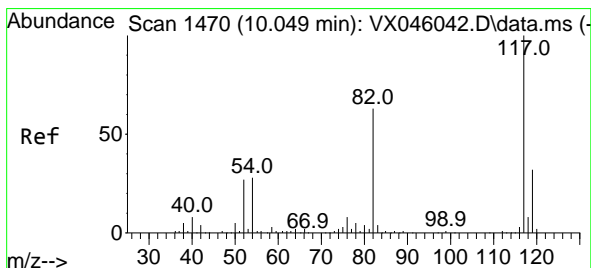
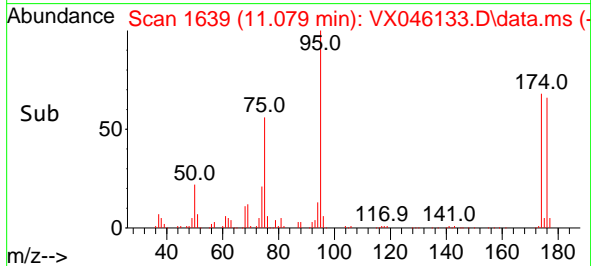
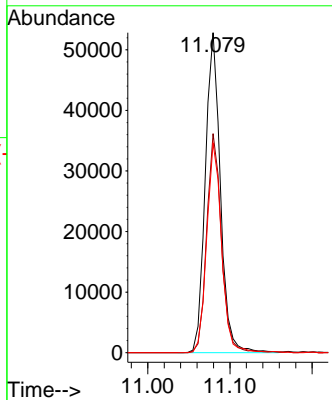
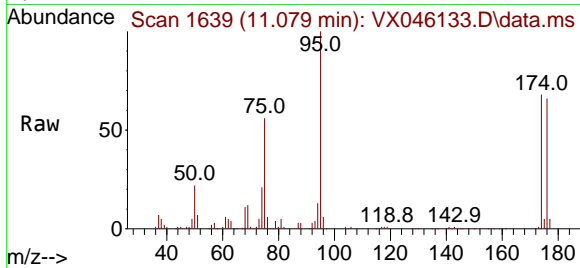


#62  
 4-Bromofluorobenzene  
 Concen: 51.896 ug/l  
 RT: 11.079 min Scan# 1639  
 Delta R.T. 0.000 min  
 Lab File: VX046133.D  
 Acq: 12 May 2025 13:12

Instrument : MSVOA\_X  
 ClientSampleId : OR-636-COMP-03

Tgt Ion: 95 Resp: 67308

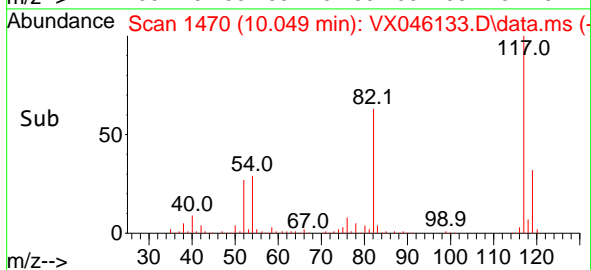
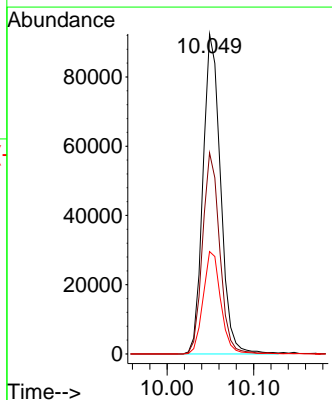
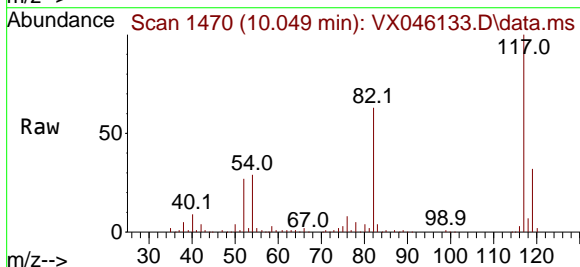
Ion	Ratio	Lower	Upper
95	100		
174	67.2	0.0	135.8
176	64.3	0.0	131.4

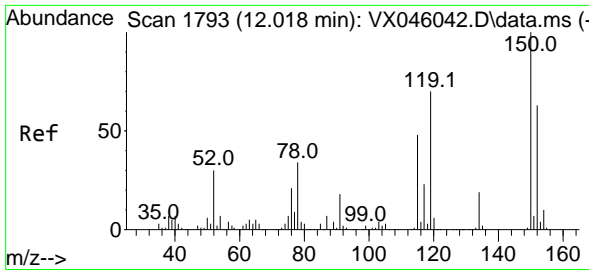


#63  
 Chlorobenzene-d5  
 Concen: 50.000 ug/l  
 RT: 10.049 min Scan# 1470  
 Delta R.T. 0.000 min  
 Lab File: VX046133.D  
 Acq: 12 May 2025 13:12

Tgt Ion: 117 Resp: 130488

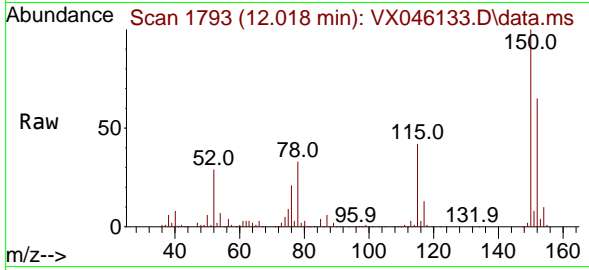
Ion	Ratio	Lower	Upper
117	100		
82	62.8	50.6	76.0
119	32.0	25.8	38.6



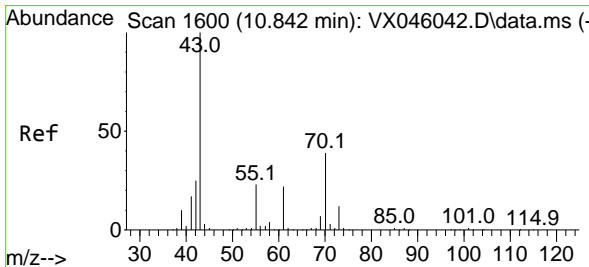
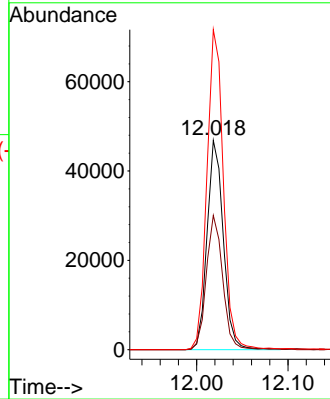
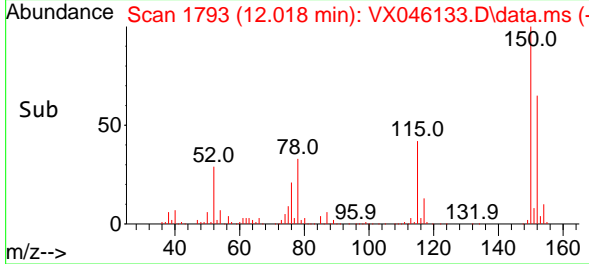


#72  
 1,4-Dichlorobenzene-d4  
 Concen: 50.000 ug/l  
 RT: 12.018 min Scan# 11  
 Delta R.T. 0.000 min  
 Lab File: VX046133.D  
 Acq: 12 May 2025 13:12

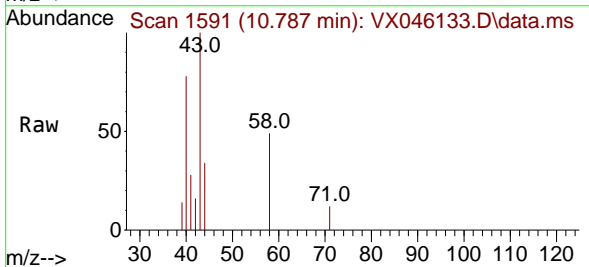
Instrument :  
 MSVOA\_X  
 ClientSampleId :  
 OR-636-COMP-03



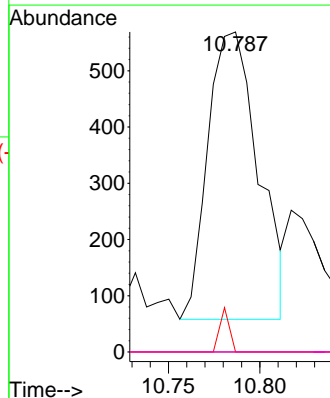
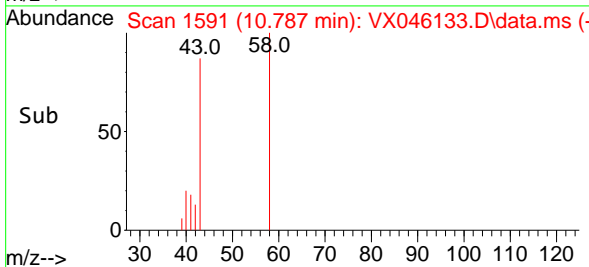
Tgt Ion:152 Resp: 58030  
 Ion Ratio Lower Upper  
 152 100  
 115 64.6 46.9 140.7  
 150 154.9 0.0 351.0

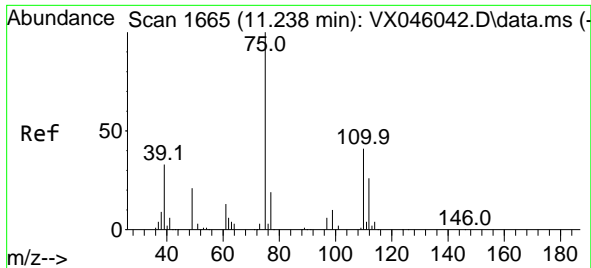


#74  
 N-amy1 acetate  
 Concen: 0.441 ug/l  
 RT: 10.787 min Scan# 1591  
 Delta R.T. -0.055 min  
 Lab File: VX046133.D  
 Acq: 12 May 2025 13:12



Tgt Ion: 43 Resp: 985  
 Ion Ratio Lower Upper  
 43 100  
 70 0.0 30.9 46.3#  
 55 2.9 18.7 28.1#  
 61 0.0 17.1 25.7#

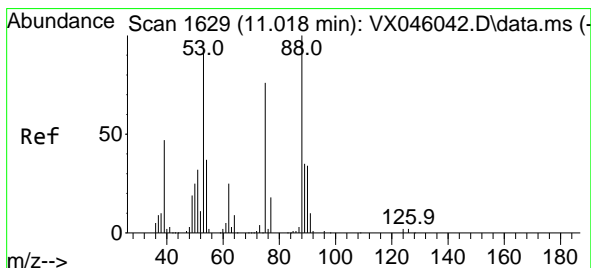
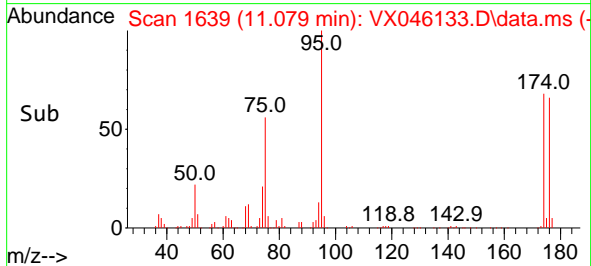
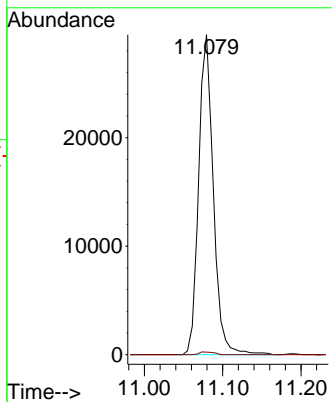
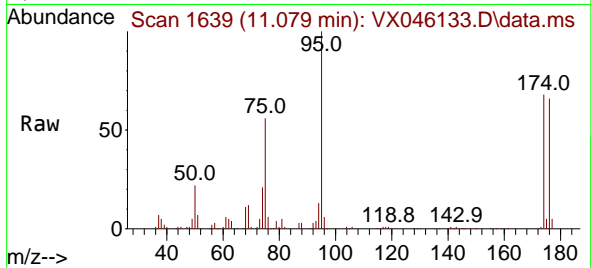




#76  
 1,2,3-Trichloropropane  
 Concen: 27.513 ug/l  
 RT: 11.079 min Scan# 1639  
 Delta R.T. -0.158 min  
 Lab File: VX046133.D  
 Acq: 12 May 2025 13:12

Instrument : MSVOA\_X  
 ClientSampleId : OR-636-COMP-03

Tgt Ion: 75 Resp: 38431  
 Ion Ratio Lower Upper  
 75 100  
 77 0.8 20.5 61.5#



#81  
 trans-1,4-Dichloro-2-butene  
 Concen: 89.575 ug/l  
 RT: 11.079 min Scan# 1639  
 Delta R.T. 0.061 min  
 Lab File: VX046133.D  
 Acq: 12 May 2025 13:12

Tgt Ion: 75 Resp: 38431  
 Ion Ratio Lower Upper  
 75 100  
 53 0.0 100.5 150.7#  
 89 0.0 37.0 55.6#

