

Data Path : Z:\voasrv\HPCHEM1\MSVOA\_X\Data\VX051225\  
 Data File : VX046140.D  
 Acq On : 12 May 2025 15:56  
 Operator : JC/MD  
 Sample : Q1986-02  
 Misc : 5.0mL/MSVOA\_X/WATER  
 ALS Vial : 17 Sample Multiplier: 1

Instrument :  
 MSVOA\_X  
 ClientSampleId :  
 COMP-8

Quant Time: May 13 03:20:01 2025  
 Quant Method : Z:\voasrv\HPCHEM1\MSVOA\_X\Method\82X050525W.M  
 Quant Title : SW846 8260  
 QLast Update : Tue May 06 07:12:22 2025  
 Response via : Initial Calibration

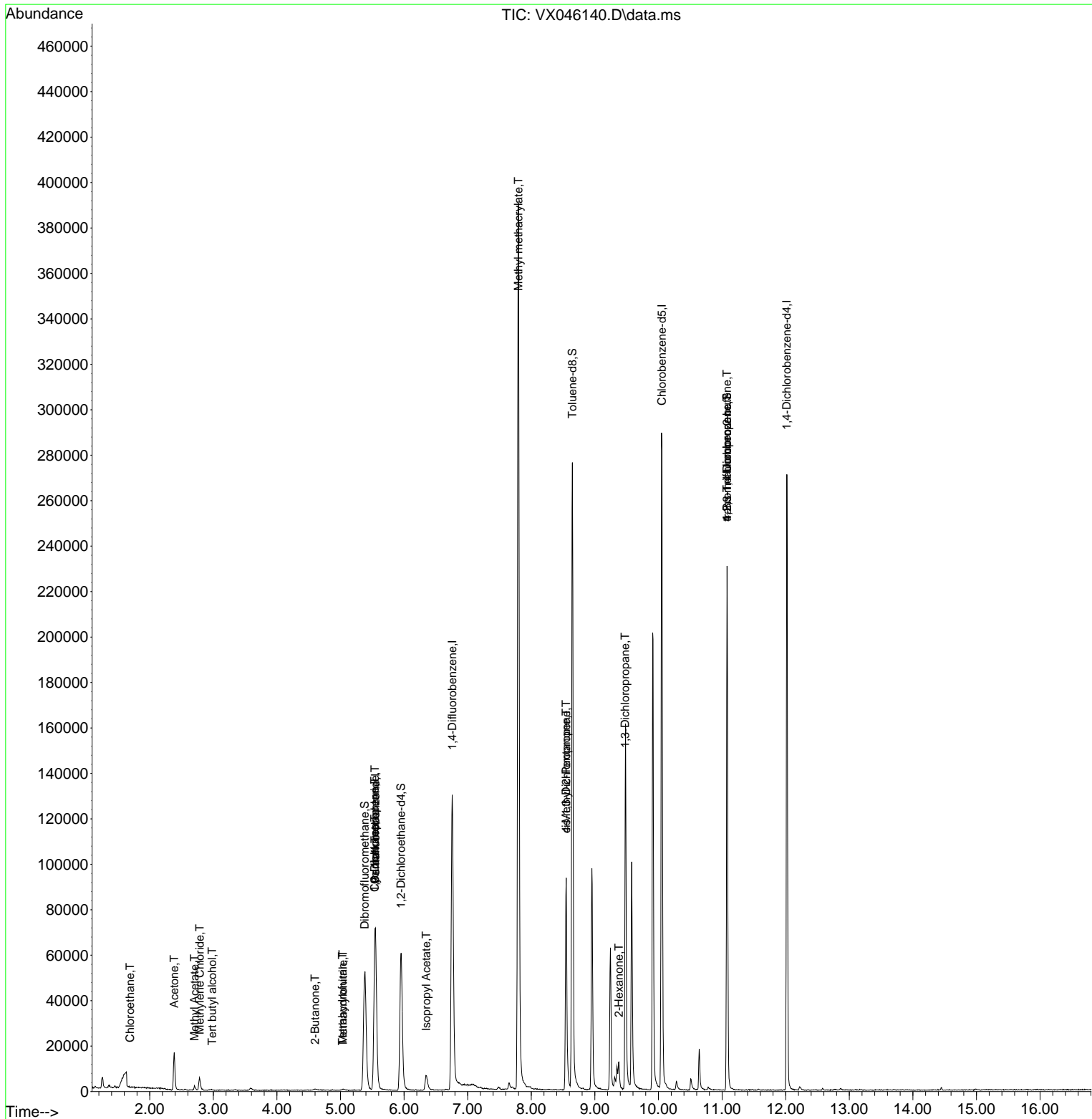
| Compound                      | R.T.   | QIon           | Response | Conc   | Units    | Dev(Min) |
|-------------------------------|--------|----------------|----------|--------|----------|----------|
| -----                         |        |                |          |        |          |          |
| Internal Standards            |        |                |          |        |          |          |
| 1) Pentafluorobenzene         | 5.550  | 168            | 61848    | 50.000 | ug/l     | 0.00     |
| 34) 1,4-Difluorobenzene       | 6.757  | 114            | 125557   | 50.000 | ug/l     | 0.00     |
| 63) Chlorobenzene-d5          | 10.055 | 117            | 122350   | 50.000 | ug/l     | 0.00     |
| 72) 1,4-Dichlorobenzene-d4    | 12.018 | 152            | 50422    | 50.000 | ug/l     | 0.00     |
| System Monitoring Compounds   |        |                |          |        |          |          |
| 33) 1,2-Dichloroethane-d4     | 5.952  | 65             | 63794    | 55.327 | ug/l     | 0.00     |
| Spiked Amount                 | 50.000 | Range 74 - 125 | Recovery | =      | 110.660% |          |
| 35) Dibromofluoromethane      | 5.379  | 113            | 46449    | 51.374 | ug/l     | 0.00     |
| Spiked Amount                 | 50.000 | Range 75 - 124 | Recovery | =      | 102.740% |          |
| 50) Toluene-d8                | 8.647  | 98             | 160746   | 51.367 | ug/l     | 0.00     |
| Spiked Amount                 | 50.000 | Range 86 - 113 | Recovery | =      | 102.740% |          |
| 62) 4-Bromofluorobenzene      | 11.079 | 95             | 60603    | 50.487 | ug/l     | 0.00     |
| Spiked Amount                 | 50.000 | Range 77 - 121 | Recovery | =      | 100.980% |          |
| Target Compounds              |        |                |          |        |          |          |
|                               |        |                |          |        |          | Qvalue   |
| 6) Chloroethane               | 1.691  | 64             | 119      | 0.261  | ug/l #   | 44       |
| 11) Tert butyl alcohol        | 2.983  | 59             | 274      | 1.693  | ug/l #   | 72       |
| 16) Acetone                   | 2.386  | 43             | 17807    | 38.517 | ug/l     | 94       |
| 18) Methyl Acetate            | 2.703  | 43             | 2083     | 1.942  | ug/l     | 97       |
| 20) Methylene Chloride        | 2.788  | 84             | 2444     | 2.759  | ug/l     | 95       |
| 25) 2-Butanone                | 4.599  | 43             | 1727     | 2.573  | ug/l #   | 81       |
| 29) Tetrahydrofuran           | 5.031  | 42             | 220      | 0.523  | ug/l #   | 66       |
| 31) Cyclohexane               | 5.537  | 56             | 1741     | 1.267  | ug/l #   | 20       |
| 36) 1,1-Dichloropropene       | 5.537  | 75             | 6191     | 5.096  | ug/l #   | 52       |
| 38) Carbon Tetrachloride      | 5.544  | 117            | 7486     | 5.484  | ug/l #   | 17       |
| 41) Methacrylonitrile         | 5.038  | 41             | 271      | 0.345  | ug/l #   | 33       |
| 43) Isopropyl Acetate         | 6.348  | 43             | 10142    | 4.429  | ug/l     | 99       |
| 48) Methyl methacrylate       | 7.799  | 41             | 40226    | 34.400 | ug/l #   | 49       |
| 51) 4-Methyl-2-Pentanone      | 8.549  | 43             | 36549    | 24.047 | ug/l #   | 51       |
| 54) cis-1,3-Dichloropropene   | 8.549  | 75             | 14024    | 10.386 | ug/l #   | 63       |
| 57) 1,3-Dichloropropane       | 9.476  | 76             | 1362     | 0.882  | ug/l #   | 42       |
| 59) 2-Hexanone                | 9.378  | 43             | 11472    | 10.202 | ug/l #   | 28       |
| 76) 1,2,3-Trichloropropane    | 11.079 | 75             | 34445    | 28.381 | ug/l #   | 37       |
| 81) trans-1,4-Dichloro-2-b... | 11.079 | 75             | 34445    | 92.398 | ug/l #   | 1        |

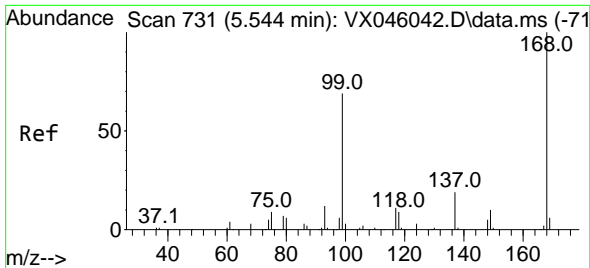
(#) = qualifier out of range (m) = manual integration (+) = signals summed

Data Path : Z:\voasrv\HPCHEM1\MSVOA\_X\Data\VX051225\  
 Data File : VX046140.D  
 Acq On : 12 May 2025 15:56  
 Operator : JC/MD  
 Sample : Q1986-02  
 Misc : 5.0mL/MSVOA\_X/WATER  
 ALS Vial : 17 Sample Multiplier: 1

Instrument :  
 MSVOA\_X  
 ClientSampleId :  
 COMP-8

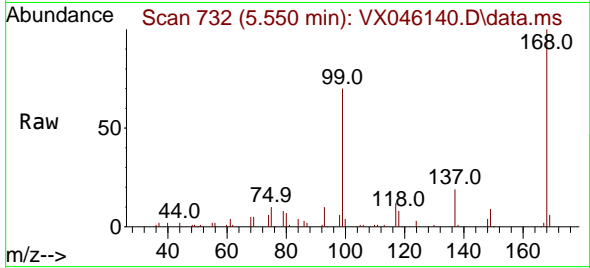
Quant Time: May 13 03:20:01 2025  
 Quant Method : Z:\voasrv\HPCHEM1\MSVOA\_X\Method\82X050525W.M  
 Quant Title : SW846 8260  
 QLast Update : Tue May 06 07:12:22 2025  
 Response via : Initial Calibration



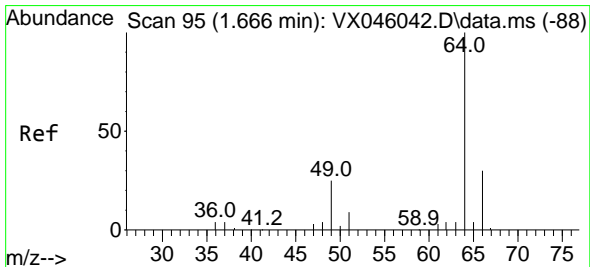
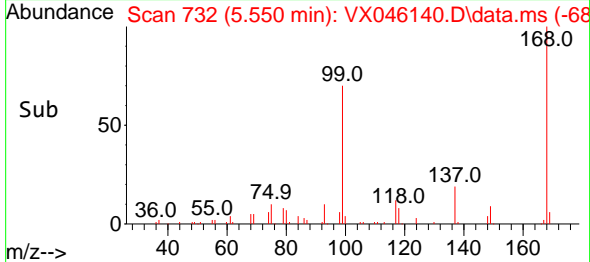
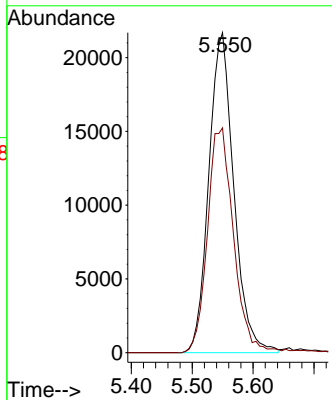


#1  
 Pentafluorobenzene  
 Concen: 50.000 ug/l  
 RT: 5.550 min Scan# 71  
 Delta R.T. 0.006 min  
 Lab File: VX046140.D  
 Acq: 12 May 2025 15:56

Instrument :  
 MSVOA\_X  
 ClientSampleId :  
 COMP-8

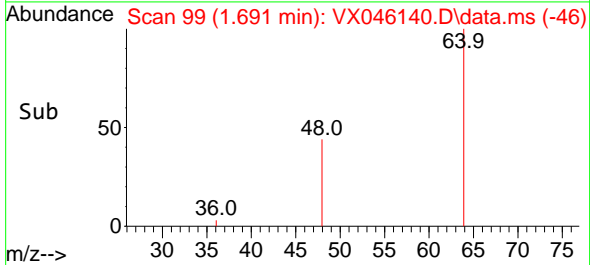
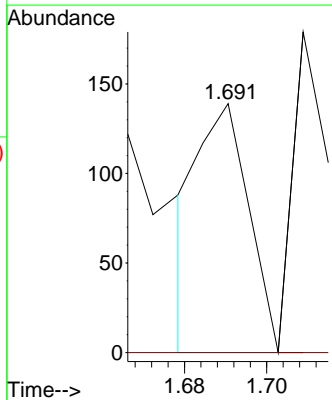
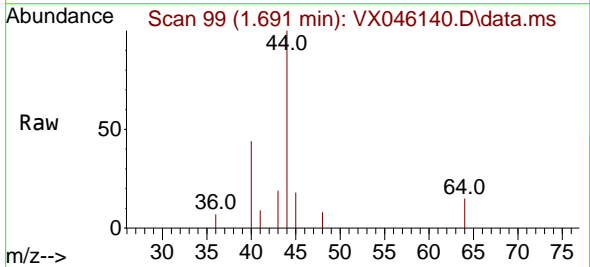


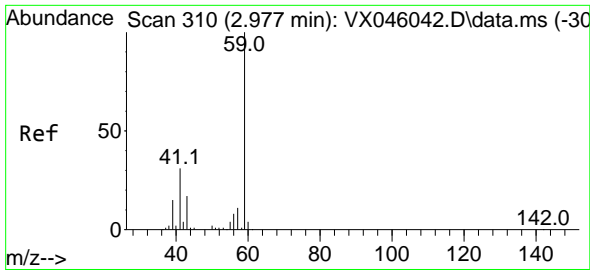
Tgt Ion:168 Resp: 61848  
 Ion Ratio Lower Upper  
 168 100  
 99 70.2 54.9 82.3



#6  
 Chloroethane  
 Concen: 0.261 ug/l  
 RT: 1.691 min Scan# 99  
 Delta R.T. 0.024 min  
 Lab File: VX046140.D  
 Acq: 12 May 2025 15:56

Tgt Ion: 64 Resp: 119  
 Ion Ratio Lower Upper  
 64 100  
 66 0.0 24.3 36.5#

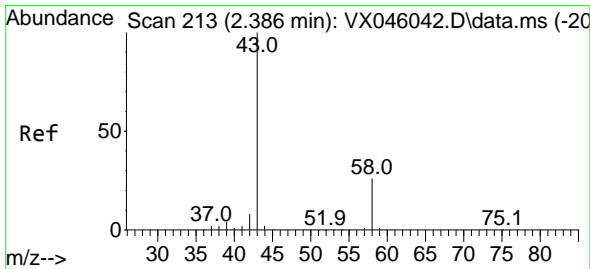
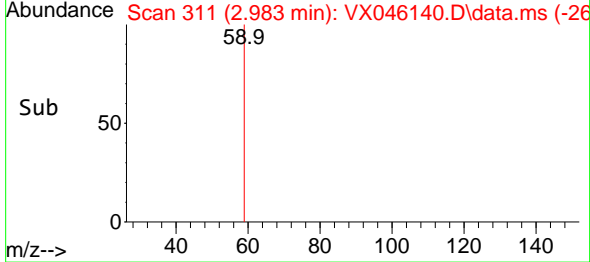
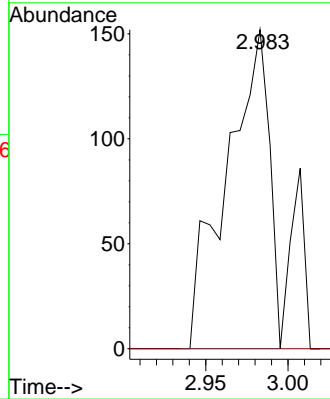
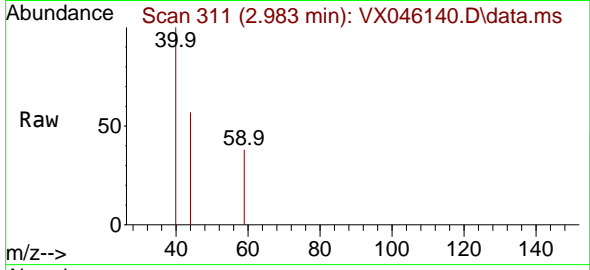




#11  
 Tert butyl alcohol  
 Concen: 1.693 ug/l  
 RT: 2.983 min Scan# 311  
 Delta R.T. 0.006 min  
 Lab File: VX046140.D  
 Acq: 12 May 2025 15:56

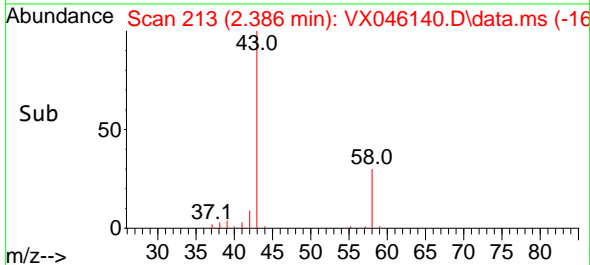
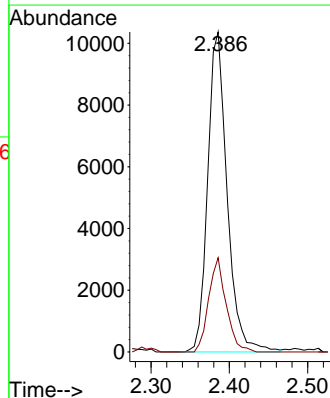
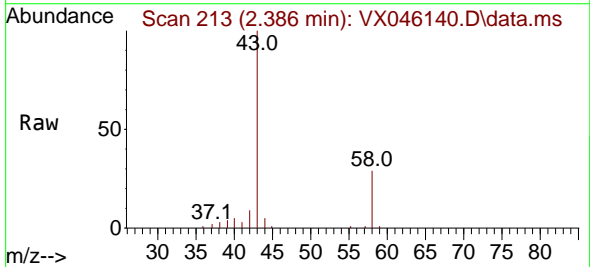
Instrument :  
 MSVOA\_X  
 ClientSampleId :  
 COMP-8

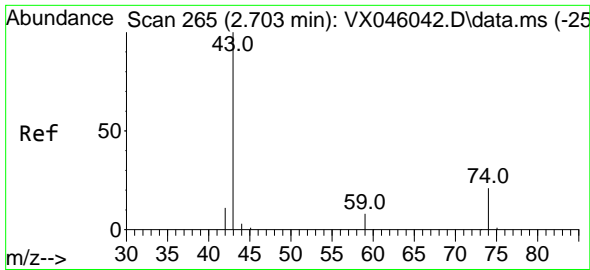
Tgt Ion: 59 Resp: 274  
 Ion Ratio Lower Upper  
 59 100  
 57 0.0 8.6 12.8#



#16  
 Acetone  
 Concen: 38.517 ug/l  
 RT: 2.386 min Scan# 213  
 Delta R.T. -0.000 min  
 Lab File: VX046140.D  
 Acq: 12 May 2025 15:56

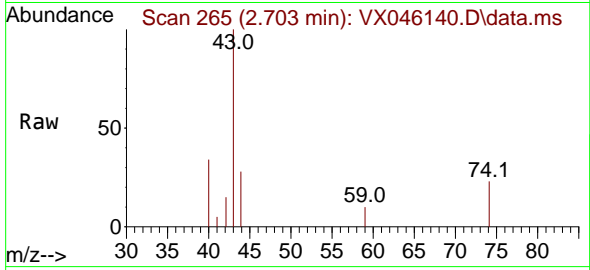
Tgt Ion: 43 Resp: 17807  
 Ion Ratio Lower Upper  
 43 100  
 58 29.5 21.2 31.8



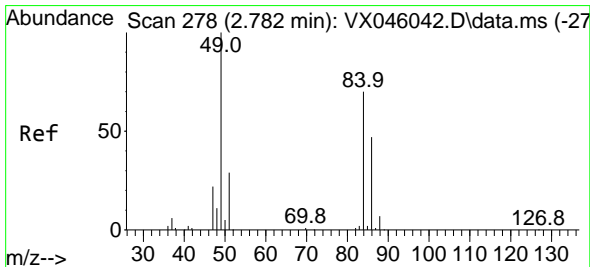
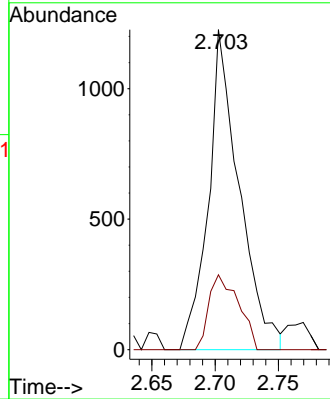
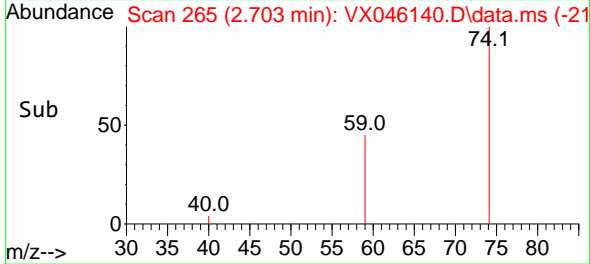


#18  
Methyl Acetate  
Concen: 1.942 ug/l  
RT: 2.703 min Scan# 2083  
Delta R.T. -0.000 min  
Lab File: VX046140.D  
Acq: 12 May 2025 15:56

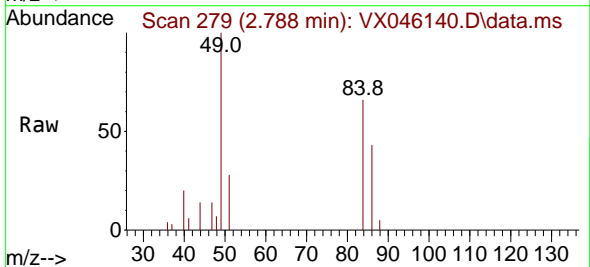
Instrument : MSVOA\_X  
ClientSampleId : COMP-8



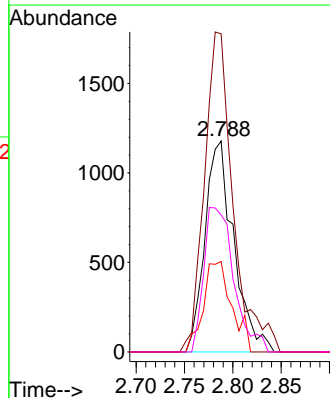
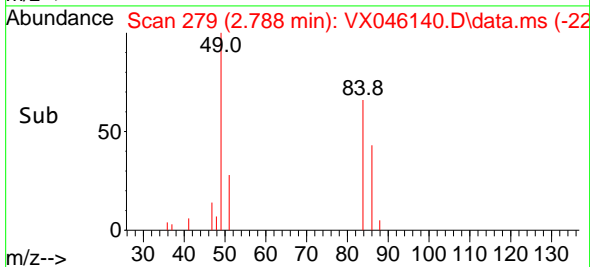
Tgt Ion: 43 Resp: 2083  
Ion Ratio Lower Upper  
43 100  
74 22.4 16.7 25.1

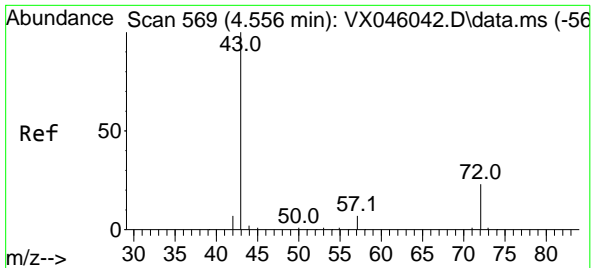


#20  
Methylene Chloride  
Concen: 2.759 ug/l  
RT: 2.788 min Scan# 279  
Delta R.T. 0.006 min  
Lab File: VX046140.D  
Acq: 12 May 2025 15:56



Tgt Ion: 84 Resp: 2444  
Ion Ratio Lower Upper  
84 100  
49 150.8 113.9 170.9  
51 42.9 33.5 50.3  
86 65.0 53.8 80.8

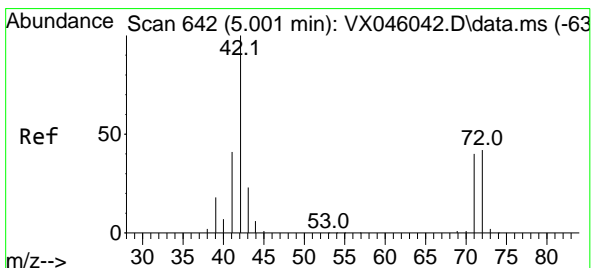
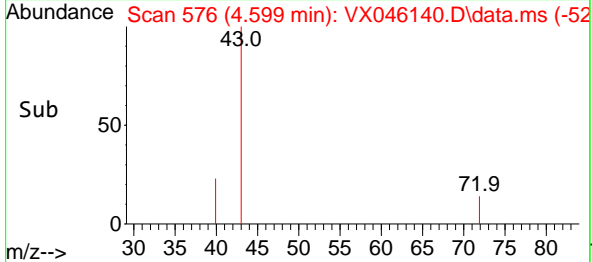
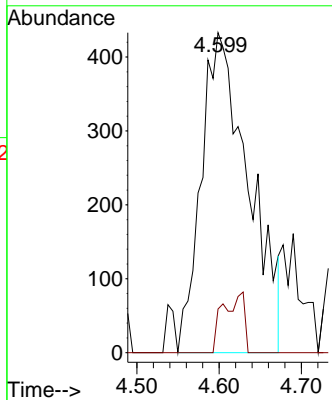
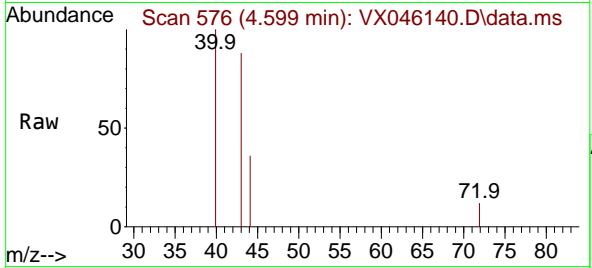




#25  
 2-Butanone  
 Concen: 2.573 ug/l  
 RT: 4.599 min Scan# 51  
 Delta R.T. 0.043 min  
 Lab File: VX046140.D  
 Acq: 12 May 2025 15:56

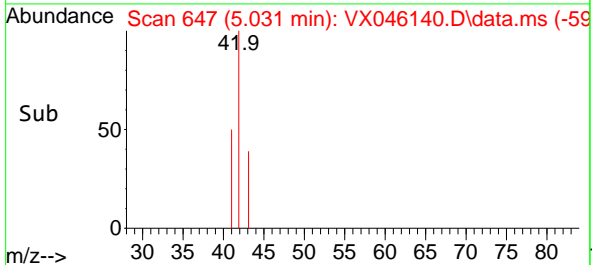
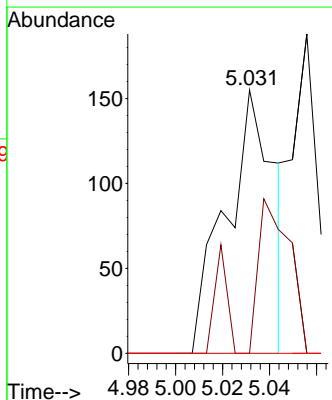
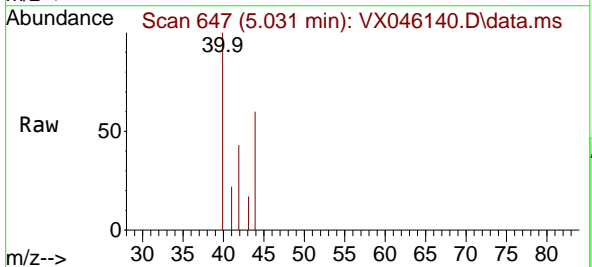
Instrument : MSVOA\_X  
 ClientSampleId :  
 COMP-8

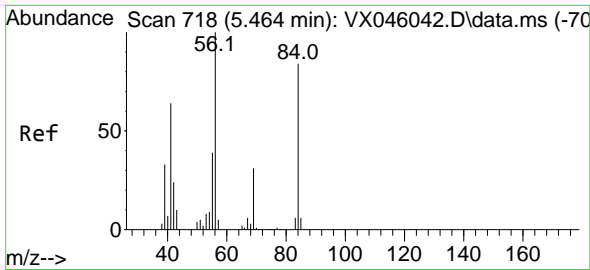
Tgt Ion: 43 Resp: 1727  
 Ion Ratio Lower Upper  
 43 100  
 72 13.6 18.4 27.6#



#29  
 Tetrahydrofuran  
 Concen: 0.523 ug/l  
 RT: 5.031 min Scan# 647  
 Delta R.T. 0.030 min  
 Lab File: VX046140.D  
 Acq: 12 May 2025 15:56

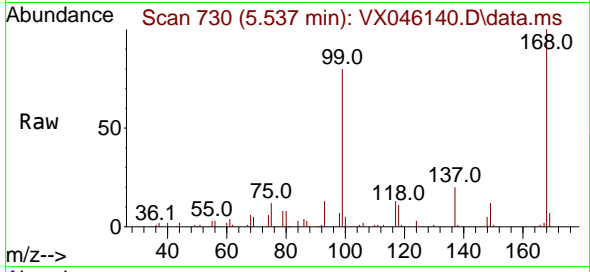
Tgt Ion: 42 Resp: 220  
 Ion Ratio Lower Upper  
 42 100  
 72 38.2 33.7 50.5  
 71 0.0 31.4 47.2#



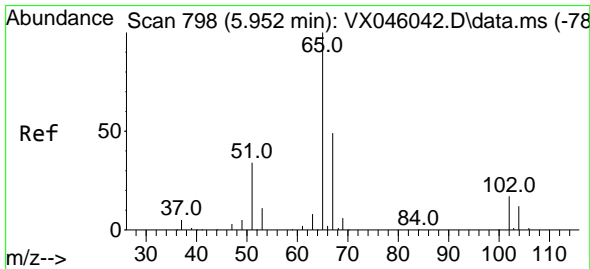
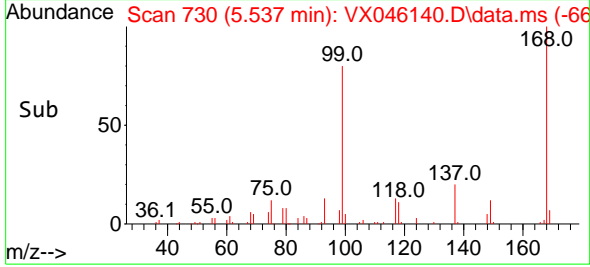
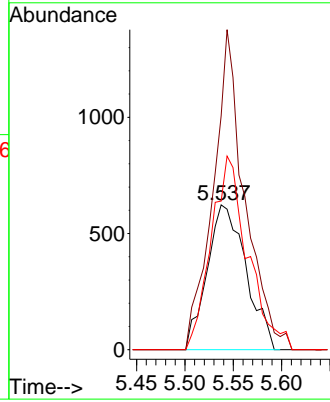


#31  
 Cyclohexane  
 Concen: 1.267 ug/l  
 RT: 5.537 min Scan# 718  
 Delta R.T. 0.073 min  
 Lab File: VX046140.D  
 Acq: 12 May 2025 15:56

Instrument : MSVOA\_X  
 ClientSampleId : COMP-8

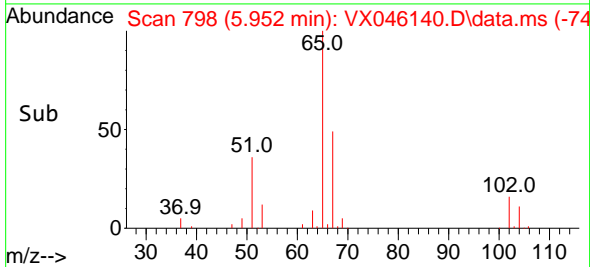
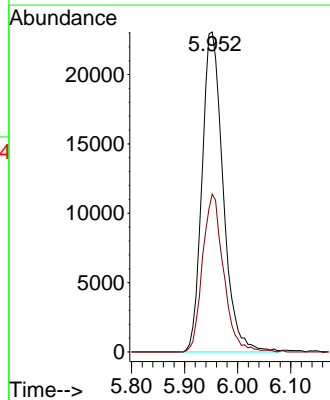
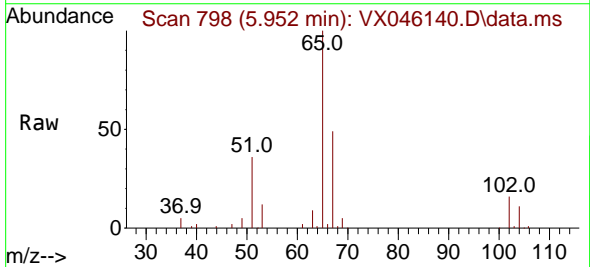


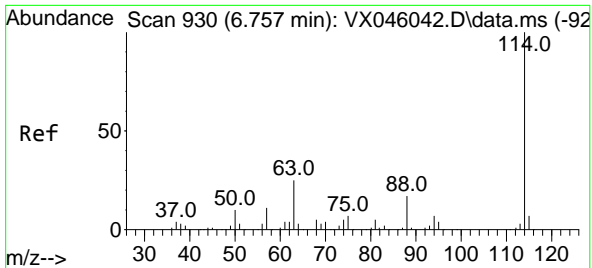
Tgt Ion: 56 Resp: 1741  
 Ion Ratio Lower Upper  
 56 100  
 69 161.6 24.4 36.6#  
 84 102.7 66.9 100.3#



#33  
 1,2-Dichloroethane-d4  
 Concen: 55.327 ug/l  
 RT: 5.952 min Scan# 798  
 Delta R.T. -0.000 min  
 Lab File: VX046140.D  
 Acq: 12 May 2025 15:56

Tgt Ion: 65 Resp: 63794  
 Ion Ratio Lower Upper  
 65 100  
 67 49.2 0.0 99.0



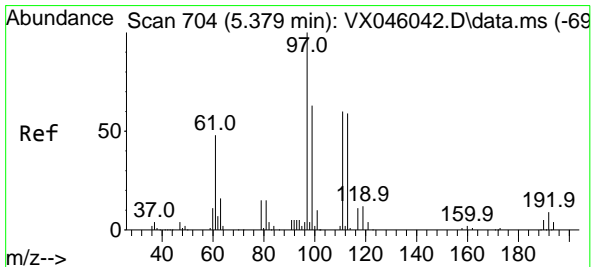
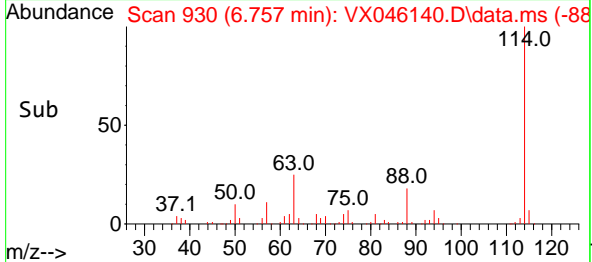
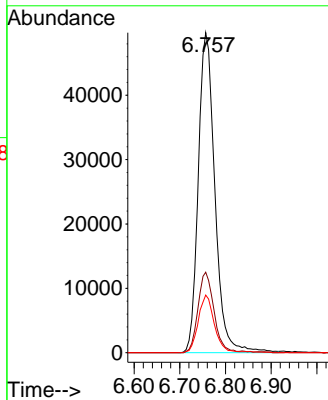
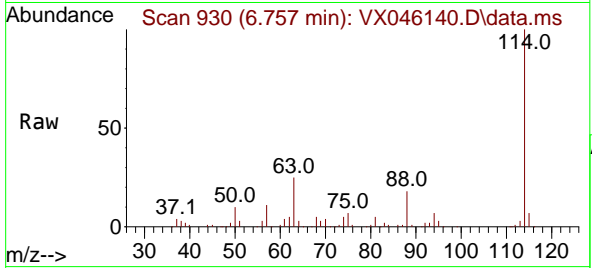


#34  
 1,4-Difluorobenzene  
 Concen: 50.000 ug/l  
 RT: 6.757 min Scan# 91  
 Delta R.T. -0.000 min  
 Lab File: VX046140.D  
 Acq: 12 May 2025 15:56

Instrument : MSVOA\_X  
 ClientSampleId :  
 COMP-8

Tgt Ion:114 Resp: 125557

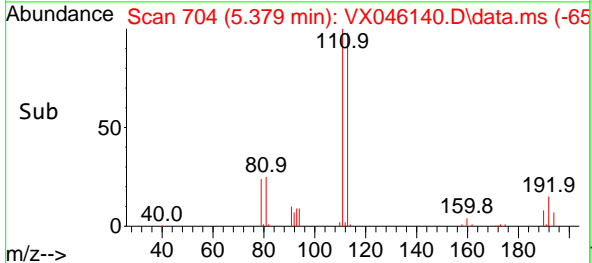
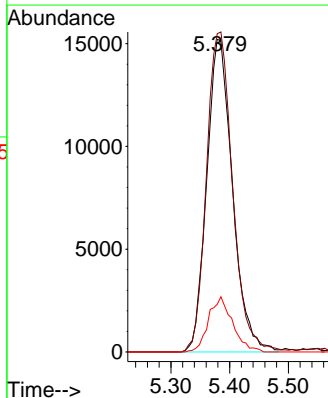
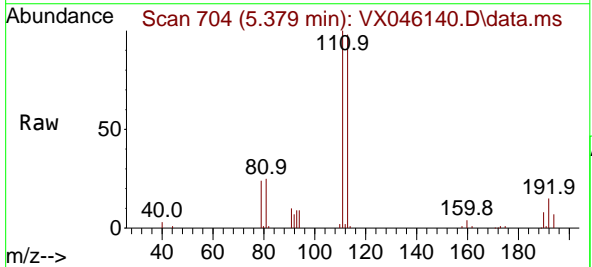
| Ion | Ratio | Lower | Upper |
|-----|-------|-------|-------|
| 114 | 100   |       |       |
| 63  | 25.2  | 0.0   | 49.2  |
| 88  | 18.0  | 0.0   | 33.6  |



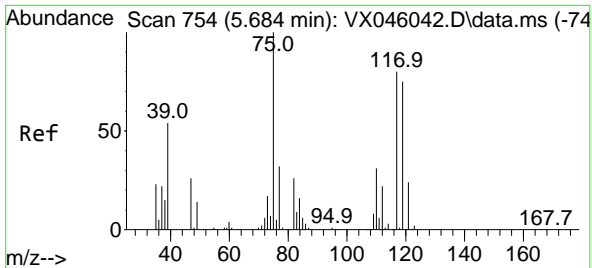
#35  
 Dibromofluoromethane  
 Concen: 51.374 ug/l  
 RT: 5.379 min Scan# 704  
 Delta R.T. -0.000 min  
 Lab File: VX046140.D  
 Acq: 12 May 2025 15:56

Tgt Ion:113 Resp: 46449

| Ion | Ratio | Lower | Upper |
|-----|-------|-------|-------|
| 113 | 100   |       |       |
| 111 | 103.4 | 83.1  | 124.7 |
| 192 | 16.4  | 13.3  | 19.9  |



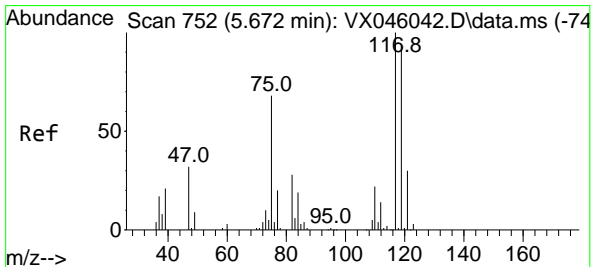
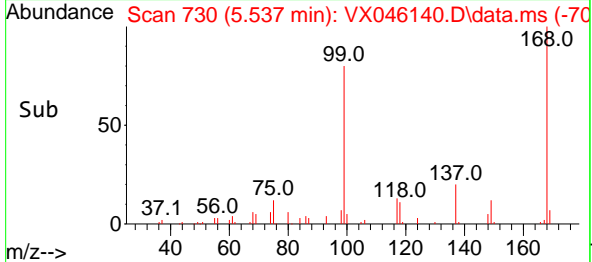
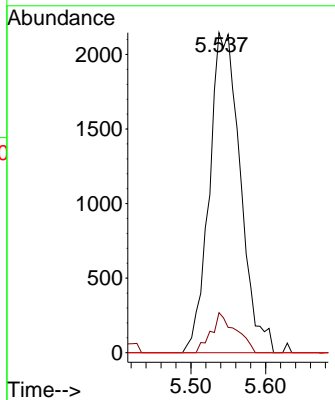
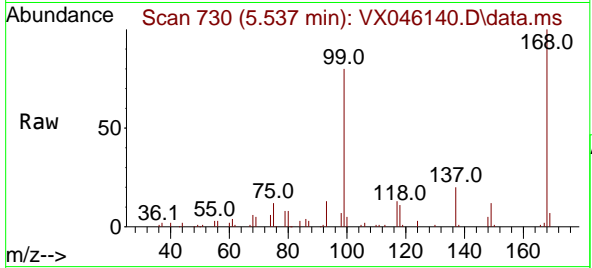




#36  
 1,1-Dichloropropene  
 Concen: 5.096 ug/l  
 RT: 5.537 min Scan# 711  
 Delta R.T. -0.147 min  
 Lab File: VX046140.D  
 Acq: 12 May 2025 15:56

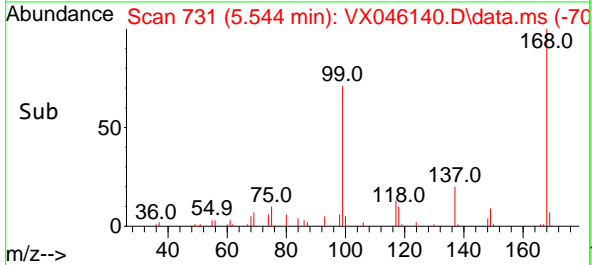
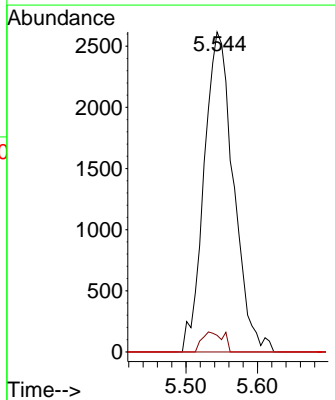
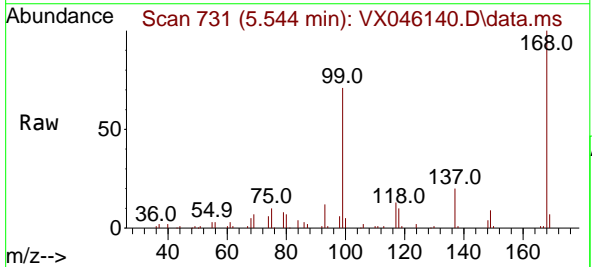
Instrument : MSVOA\_X  
 Client Sample Id : COMP-8

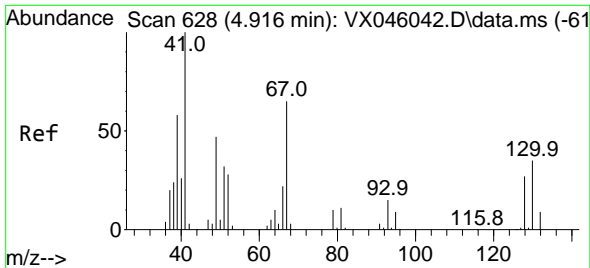
| Tgt Ion | Resp | Lower | Upper |
|---------|------|-------|-------|
| 75      | 6191 |       |       |
| 75      | 100  |       |       |
| 110     | 9.9  | 16.3  | 48.9# |
| 77      | 0.0  | 24.3  | 36.5# |



#38  
 Carbon Tetrachloride  
 Concen: 5.484 ug/l  
 RT: 5.544 min Scan# 731  
 Delta R.T. -0.128 min  
 Lab File: VX046140.D  
 Acq: 12 May 2025 15:56

| Tgt Ion | Resp | Lower | Upper  |
|---------|------|-------|--------|
| 117     | 7486 |       |        |
| 117     | 100  |       |        |
| 119     | 5.2  | 75.2  | 112.8# |
| 121     | 0.0  | 24.2  | 36.4#  |



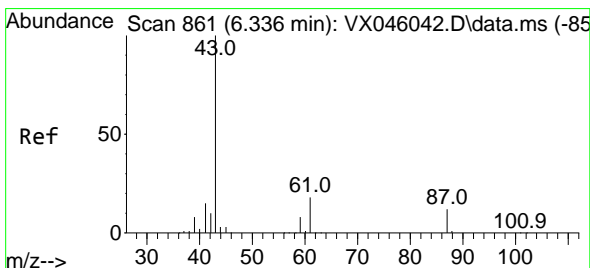
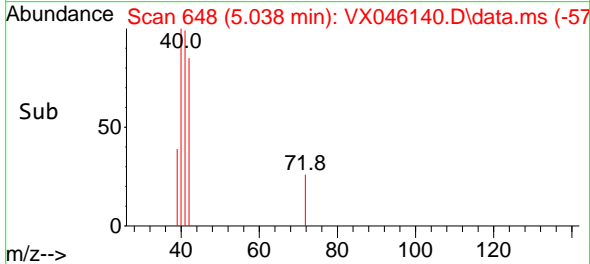
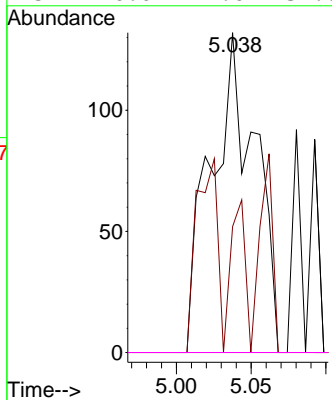
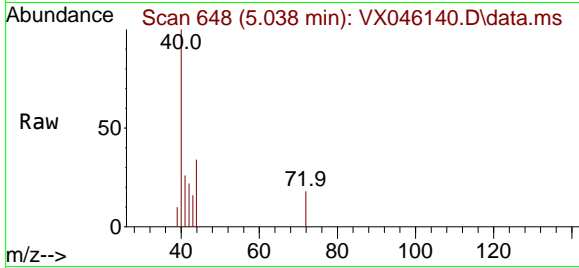


#41  
 Methacrylonitrile  
 Concen: 0.345 ug/l  
 RT: 5.038 min Scan# 641  
 Delta R.T. 0.122 min  
 Lab File: VX046140.D  
 Acq: 12 May 2025 15:56

Instrument : MSVOA\_X  
 ClientSampleId :  
 COMP-8

Tgt Ion: 41 Resp: 271

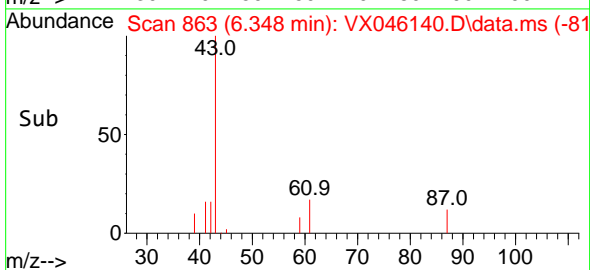
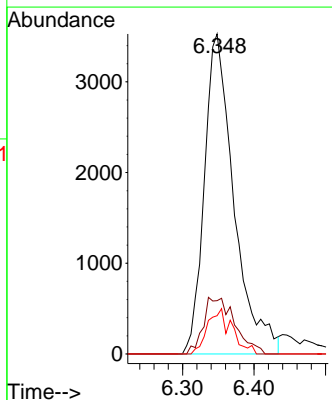
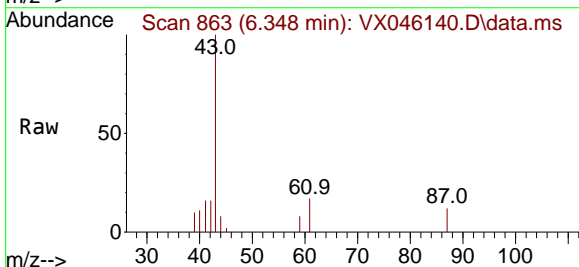
| Ion | Ratio | Lower | Upper |
|-----|-------|-------|-------|
| 41  | 100   |       |       |
| 39  | 15.5  | 47.2  | 70.8# |
| 67  | 0.0   | 50.7  | 76.1# |
| 52  | 0.0   | 24.6  | 37.0# |

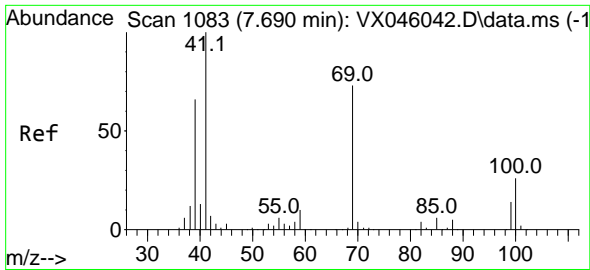


#43  
 Isopropyl Acetate  
 Concen: 4.429 ug/l  
 RT: 6.348 min Scan# 863  
 Delta R.T. 0.012 min  
 Lab File: VX046140.D  
 Acq: 12 May 2025 15:56

Tgt Ion: 43 Resp: 10142

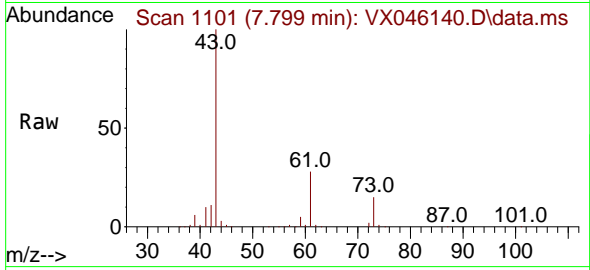
| Ion | Ratio | Lower | Upper |
|-----|-------|-------|-------|
| 43  | 100   |       |       |
| 61  | 18.7  | 14.3  | 21.5  |
| 87  | 11.7  | 9.5   | 14.3  |



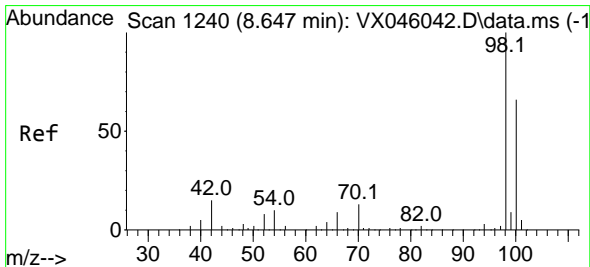
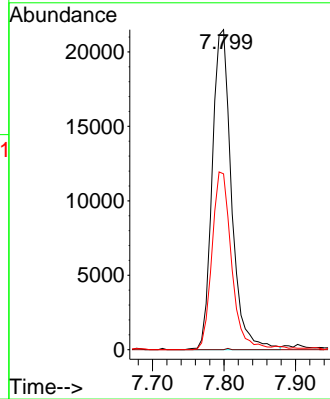
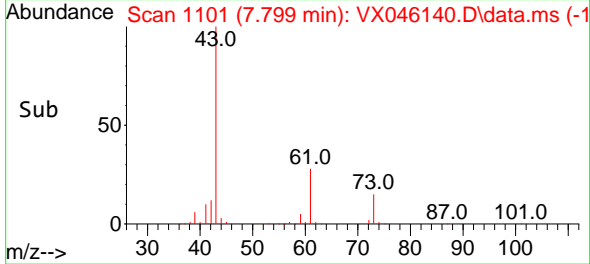


#48  
 Methyl methacrylate  
 Concen: 34.400 ug/l  
 RT: 7.799 min Scan# 1101  
 Delta R.T. 0.110 min  
 Lab File: VX046140.D  
 Acq: 12 May 2025 15:56

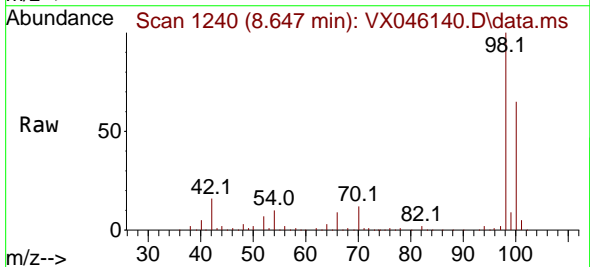
Instrument : MSVOA\_X  
 ClientSampleId :  
 COMP-8



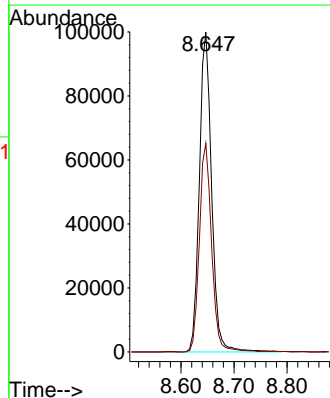
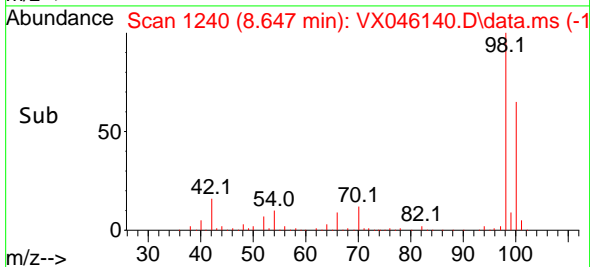
Tgt Ion: 41 Resp: 40226  
 Ion Ratio Lower Upper  
 41 100  
 69 0.1 58.5 87.7#  
 39 56.3 51.7 77.5

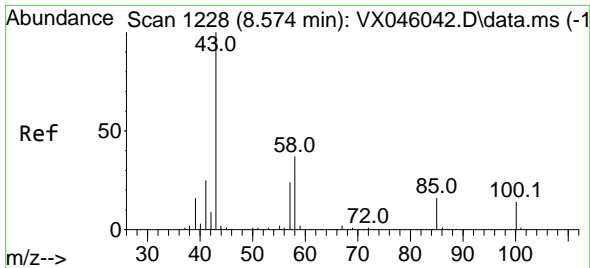


#50  
 Toluene-d8  
 Concen: 51.367 ug/l  
 RT: 8.647 min Scan# 1240  
 Delta R.T. -0.000 min  
 Lab File: VX046140.D  
 Acq: 12 May 2025 15:56



Tgt Ion: 98 Resp: 160746  
 Ion Ratio Lower Upper  
 98 100  
 100 65.0 53.5 80.3

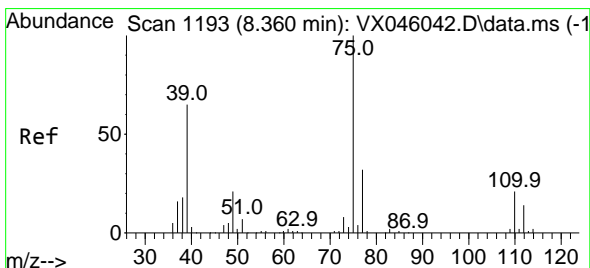
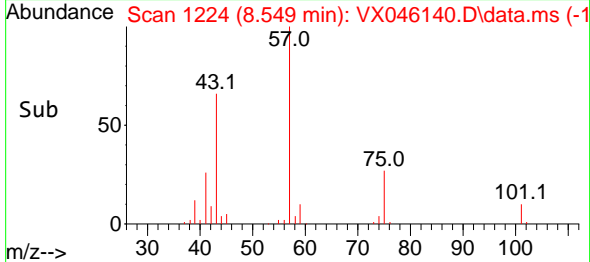
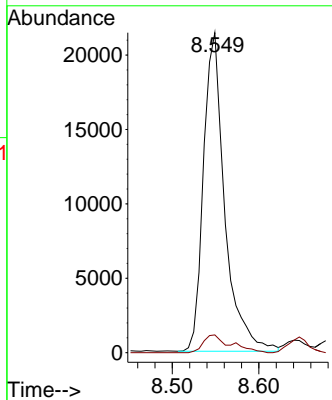
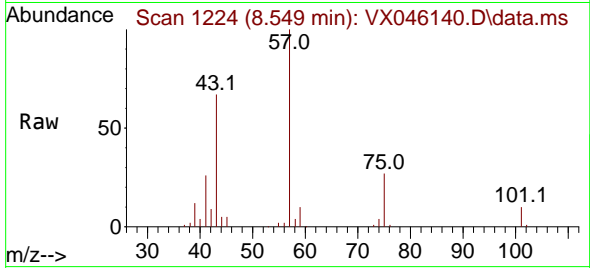




#51  
 4-Methyl-2-Pentanone  
 Concen: 24.047 ug/l  
 RT: 8.549 min Scan# 11  
 Delta R.T. -0.025 min  
 Lab File: VX046140.D  
 Acq: 12 May 2025 15:56

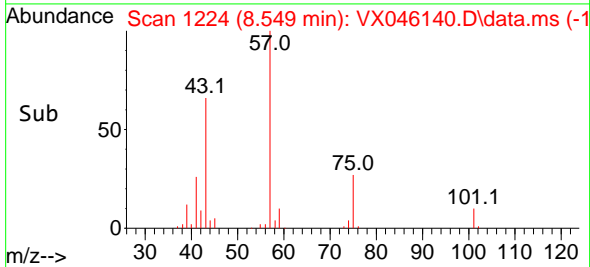
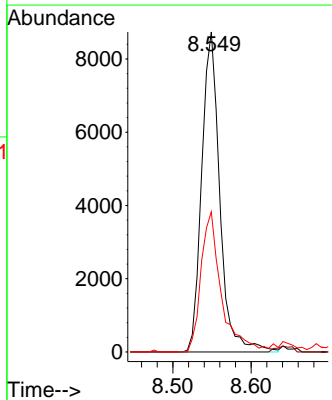
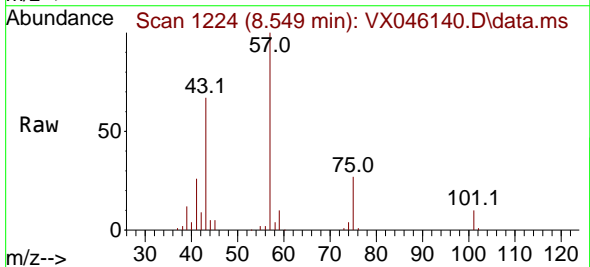
Instrument : MSVOA\_X  
 ClientSampleId :  
 COMP-8

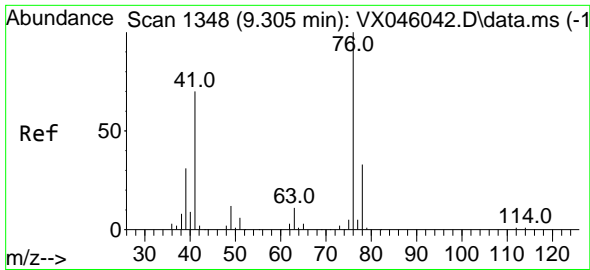
Tgt Ion: 43 Resp: 36549  
 Ion Ratio Lower Upper  
 43 100  
 58 7.2 28.9 43.3#



#54  
 cis-1,3-Dichloropropene  
 Concen: 10.386 ug/l  
 RT: 8.549 min Scan# 1224  
 Delta R.T. 0.189 min  
 Lab File: VX046140.D  
 Acq: 12 May 2025 15:56

Tgt Ion: 75 Resp: 14024  
 Ion Ratio Lower Upper  
 75 100  
 77 0.0 25.4 38.0#  
 39 43.8 52.2 78.4#

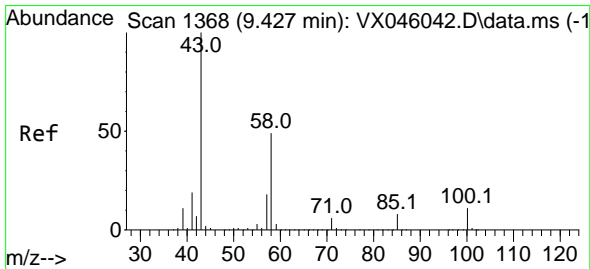
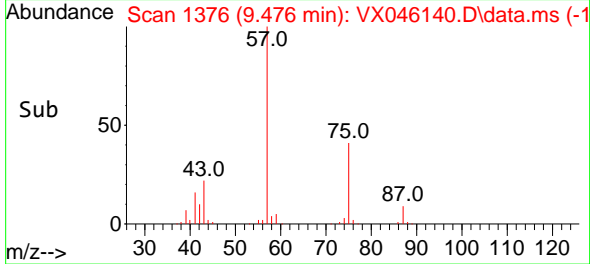
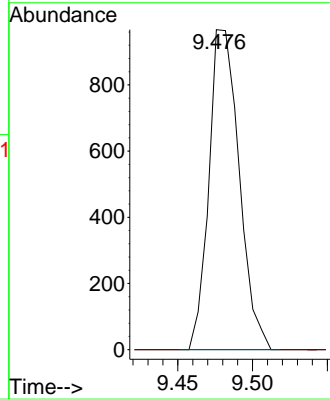
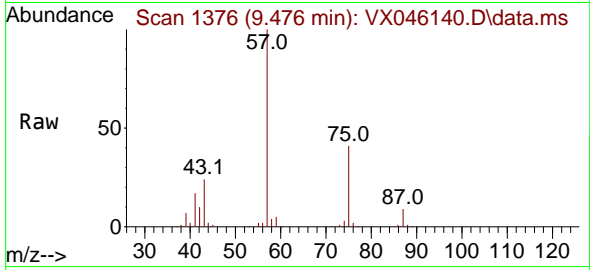




#57  
 1,3-Dichloropropane  
 Concen: 0.882 ug/l  
 RT: 9.476 min Scan# 1360  
 Delta R.T. 0.171 min  
 Lab File: VX046140.D  
 Acq: 12 May 2025 15:56

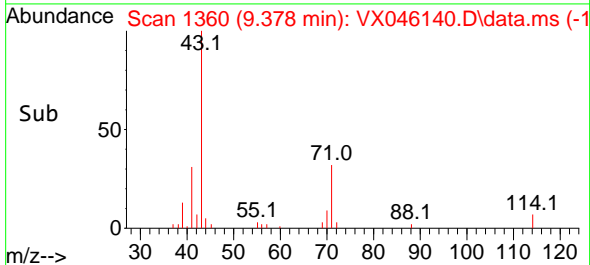
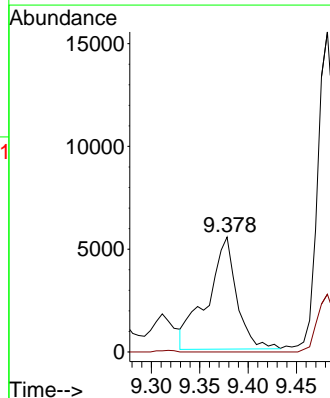
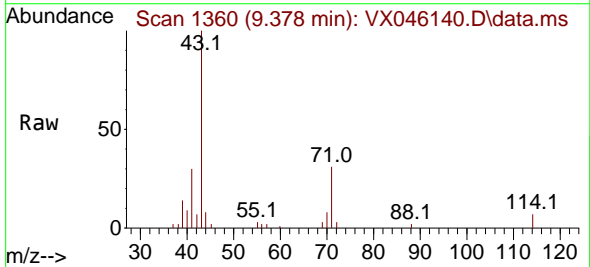
Instrument : MSVOA\_X  
 ClientSampleId :  
 COMP-8

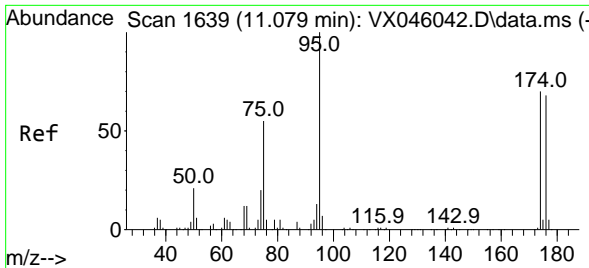
Tgt Ion: 76 Resp: 1362  
 Ion Ratio Lower Upper  
 76 100  
 78 0.0 26.3 39.5#



#59  
 2-Hexanone  
 Concen: 10.202 ug/l  
 RT: 9.378 min Scan# 1360  
 Delta R.T. -0.049 min  
 Lab File: VX046140.D  
 Acq: 12 May 2025 15:56

Tgt Ion: 43 Resp: 11472  
 Ion Ratio Lower Upper  
 43 100  
 58 0.0 24.9 74.6#

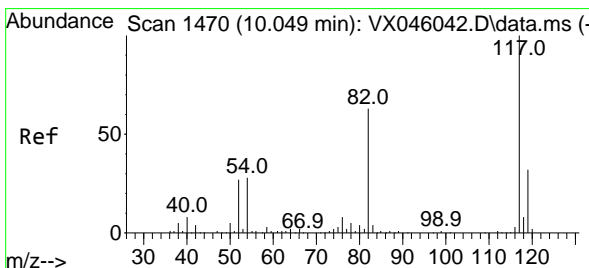
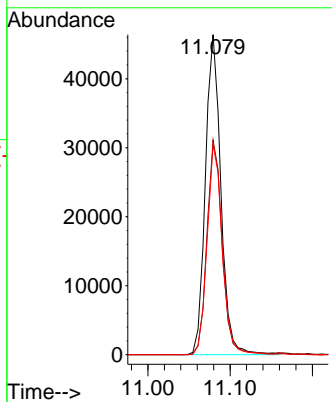
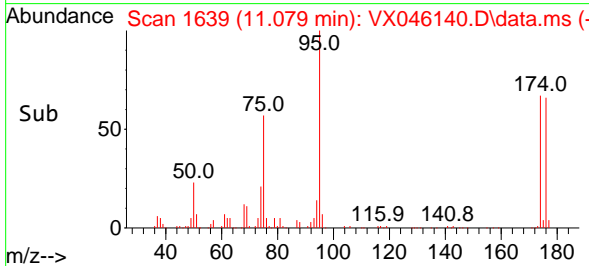
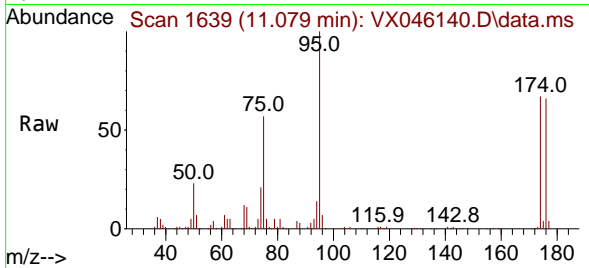




#62  
 4-Bromofluorobenzene  
 Concen: 50.487 ug/l  
 RT: 11.079 min Scan# 1639  
 Delta R.T. -0.000 min  
 Lab File: VX046140.D  
 Acq: 12 May 2025 15:56

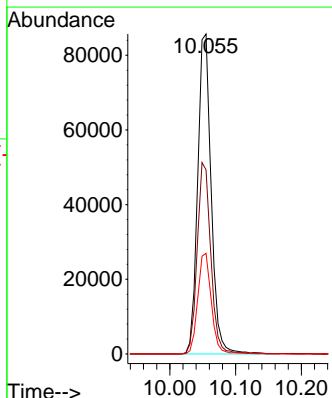
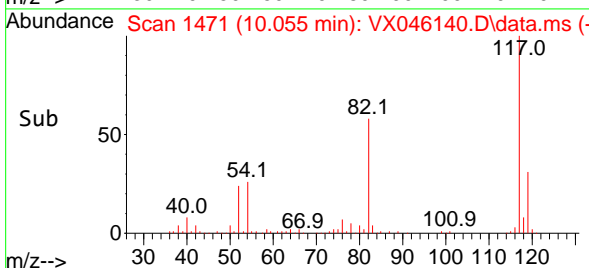
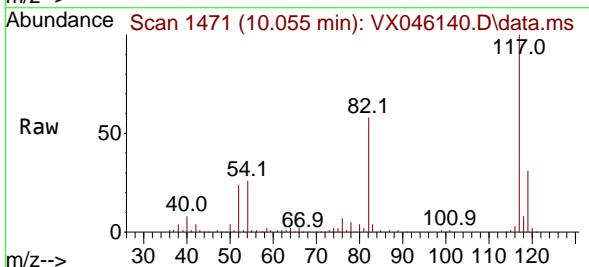
Instrument : MSVOA\_X  
 ClientSampleId :  
 COMP-8

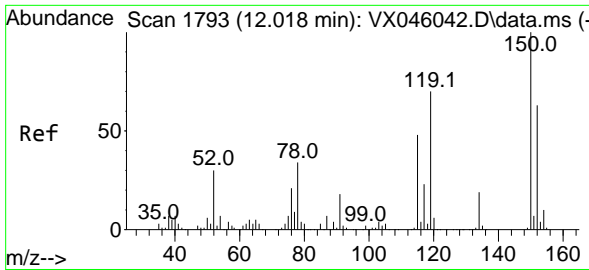
| Tgt Ion | Resp  | Lower | Upper |
|---------|-------|-------|-------|
| 95      | 60603 | 100   |       |
| 174     | 66.2  | 0.0   | 135.8 |
| 176     | 64.1  | 0.0   | 131.4 |



#63  
 Chlorobenzene-d5  
 Concen: 50.000 ug/l  
 RT: 10.055 min Scan# 1471  
 Delta R.T. 0.006 min  
 Lab File: VX046140.D  
 Acq: 12 May 2025 15:56

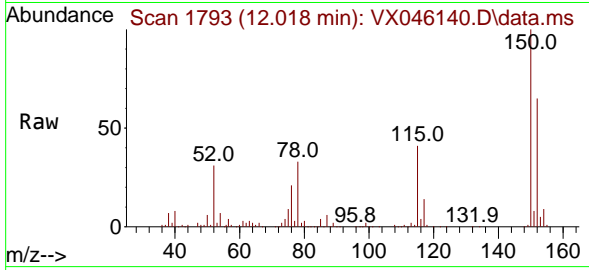
| Tgt Ion | Resp   | Lower | Upper |
|---------|--------|-------|-------|
| 117     | 122350 | 100   |       |
| 82      | 57.5   | 50.6  | 76.0  |
| 119     | 31.5   | 25.8  | 38.6  |



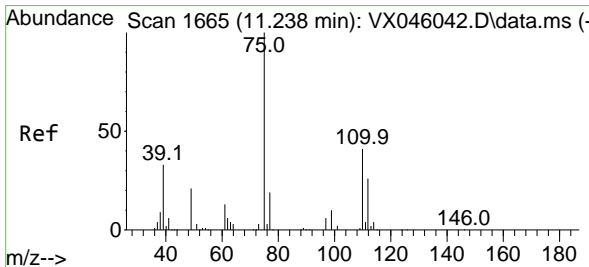
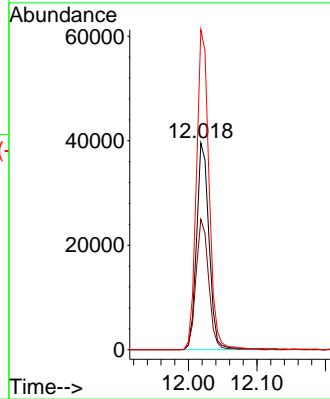
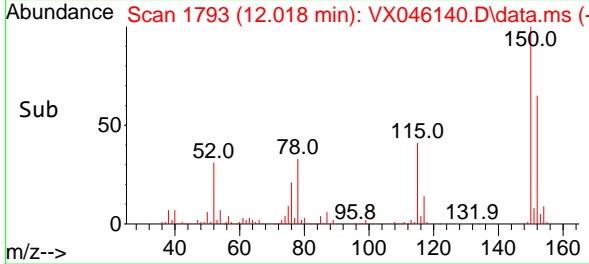


#72  
 1,4-Dichlorobenzene-d4  
 Concen: 50.000 ug/l  
 RT: 12.018 min Scan# 11  
 Delta R.T. -0.000 min  
 Lab File: VX046140.D  
 Acq: 12 May 2025 15:56

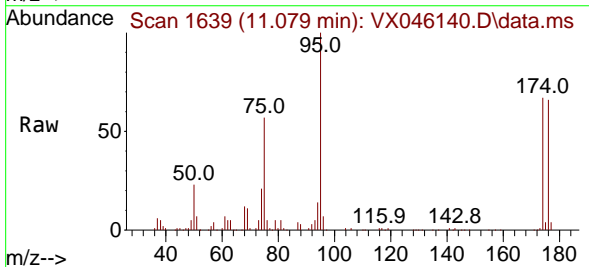
Instrument :  
 MSVOA\_X  
 ClientSampleId :  
 COMP-8



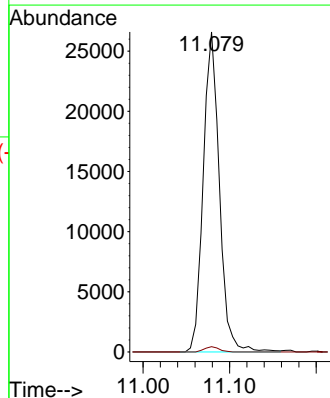
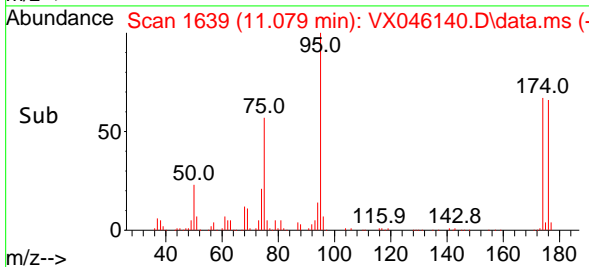
Tgt Ion:152 Resp: 50422  
 Ion Ratio Lower Upper  
 152 100  
 115 63.9 46.9 140.7  
 150 156.0 0.0 351.0

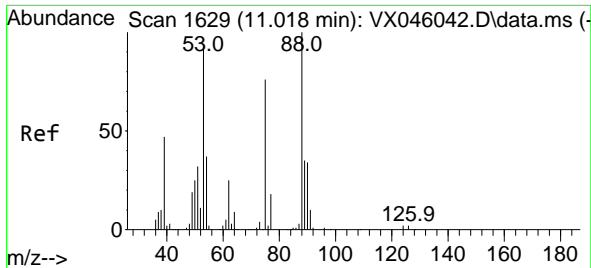


#76  
 1,2,3-Trichloropropane  
 Concen: 28.381 ug/l  
 RT: 11.079 min Scan# 1639  
 Delta R.T. -0.159 min  
 Lab File: VX046140.D  
 Acq: 12 May 2025 15:56



Tgt Ion: 75 Resp: 34445  
 Ion Ratio Lower Upper  
 75 100  
 77 1.5 20.5 61.5#





#81  
 trans-1,4-Dichloro-2-butene  
 Concen: 92.398 ug/l  
 RT: 11.079 min Scan# 1  
 Delta R.T. 0.061 min  
 Lab File: VX046140.D  
 Acq: 12 May 2025 15:56

Instrument :  
 MSVOA\_X  
 ClientSampleId :  
 COMP-8

Tgt Ion: 75 Resp: 34445  
 Ion Ratio Lower Upper  
 75 100  
 53 0.0 100.5 150.7#  
 89 0.0 37.0 55.6#

