

Data Path : Z:\voasrv\HPCHEM1\MSVOA\_X\Data\VX051225\  
 Data File : VX046135.D  
 Acq On : 12 May 2025 13:59  
 Operator : JC/MD  
 Sample : Q1983-30  
 Misc : 5.0mL/MSVOA\_X/WATER  
 ALS Vial : 12 Sample Multiplier: 1

Instrument :  
 MSVOA\_X  
 ClientSampleId :  
 OR-636-COMP-05

Quant Time: May 13 03:18:07 2025  
 Quant Method : Z:\voasrv\HPCHEM1\MSVOA\_X\Method\82X050525W.M  
 Quant Title : SW846 8260  
 QLast Update : Tue May 06 07:12:22 2025  
 Response via : Initial Calibration

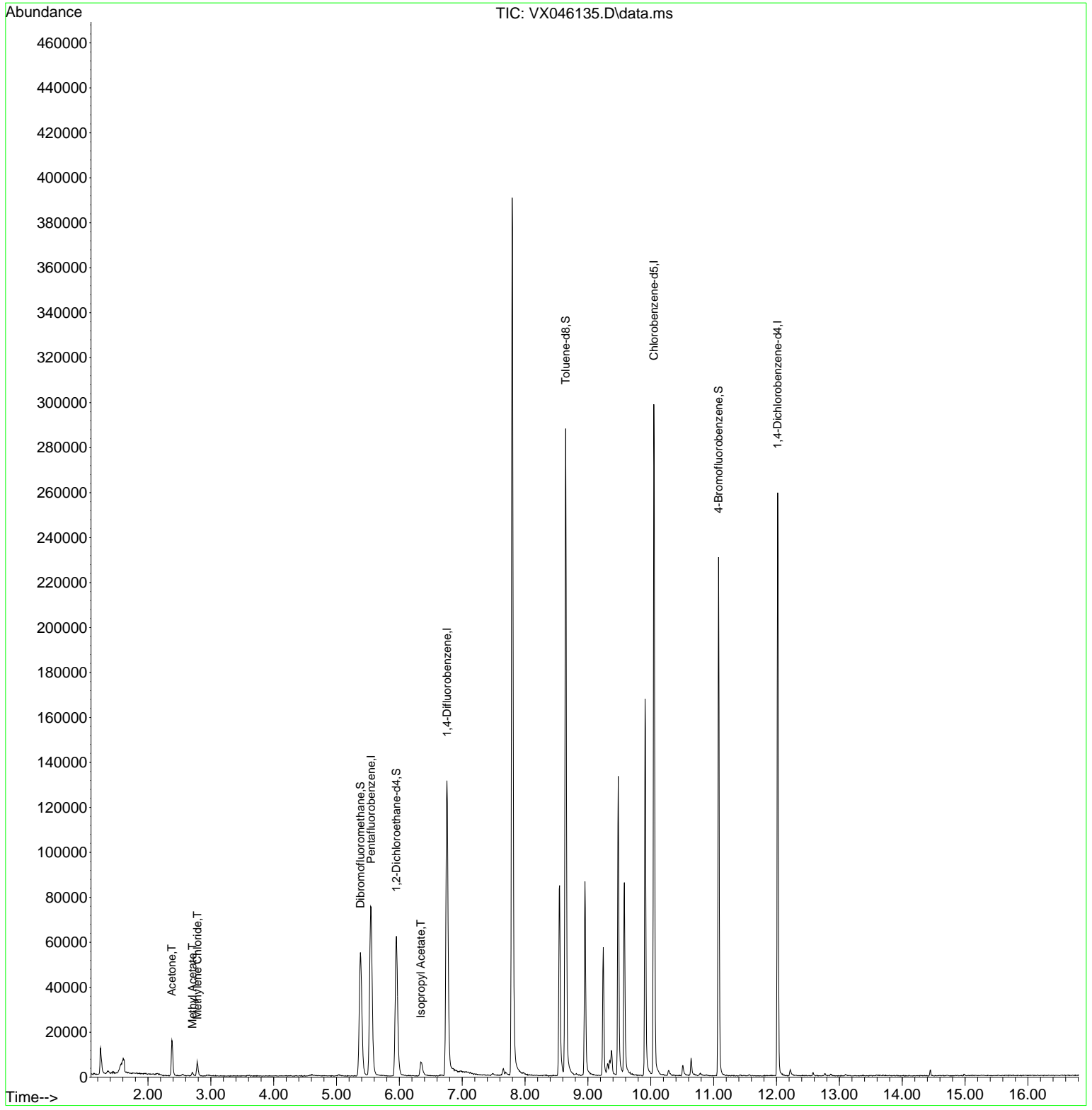
Compound	R.T.	QIon	Response	Conc	Units	Dev(Min)
-----						
Internal Standards						
1) Pentafluorobenzene	5.550	168	63747	50.000	ug/l	0.00
34) 1,4-Difluorobenzene	6.757	114	128211	50.000	ug/l	0.00
63) Chlorobenzene-d5	10.049	117	118969	50.000	ug/l	0.00
72) 1,4-Dichlorobenzene-d4	12.018	152	48639	50.000	ug/l	0.00
System Monitoring Compounds						
33) 1,2-Dichloroethane-d4	5.952	65	64715	54.453	ug/l	0.00
Spiked Amount	50.000	Range	74 - 125	Recovery	=	108.900%
35) Dibromofluoromethane	5.379	113	47799	51.772	ug/l	0.00
Spiked Amount	50.000	Range	75 - 124	Recovery	=	103.540%
50) Toluene-d8	8.647	98	165076	51.659	ug/l	0.00
Spiked Amount	50.000	Range	86 - 113	Recovery	=	103.320%
62) 4-Bromofluorobenzene	11.079	95	59049	48.174	ug/l	0.00
Spiked Amount	50.000	Range	77 - 121	Recovery	=	96.340%
Target Compounds						
						Qvalue
16) Acetone	2.380	43	17679	37.101	ug/l	100
18) Methyl Acetate	2.709	43	1923	1.739	ug/l	94
20) Methylene Chloride	2.788	84	2490	2.727	ug/l	90
43) Isopropyl Acetate	6.342	43	10136	4.335	ug/l	99
-----						

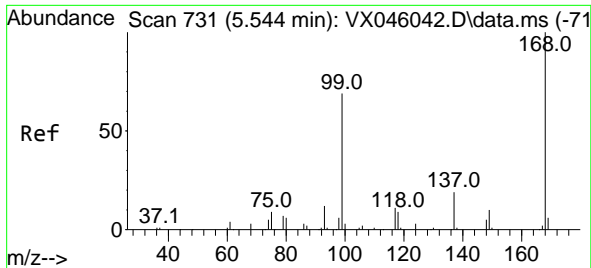
(#) = qualifier out of range (m) = manual integration (+) = signals summed

Data Path : Z:\voasrv\HPCHEM1\MSVOA\_X\Data\VX051225\  
 Data File : VX046135.D  
 Acq On : 12 May 2025 13:59  
 Operator : JC/MD  
 Sample : Q1983-30  
 Misc : 5.0mL/MSVOA\_X/WATER  
 ALS Vial : 12 Sample Multiplier: 1

**Instrument :**  
 MSVOA\_X  
**ClientSampleId :**  
 OR-636-COMP-05

Quant Time: May 13 03:18:07 2025  
 Quant Method : Z:\voasrv\HPCHEM1\MSVOA\_X\Method\82X050525W.M  
 Quant Title : SW846 8260  
 QLast Update : Tue May 06 07:12:22 2025  
 Response via : Initial Calibration

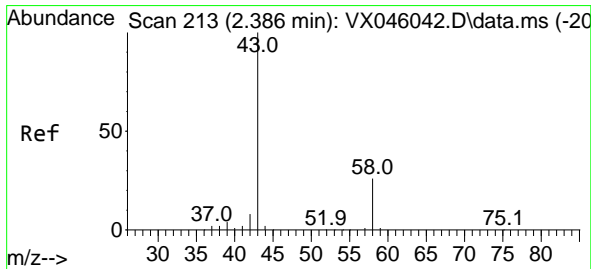
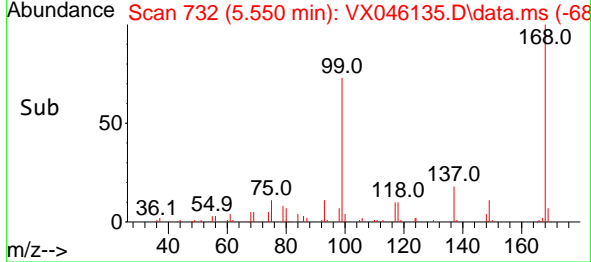
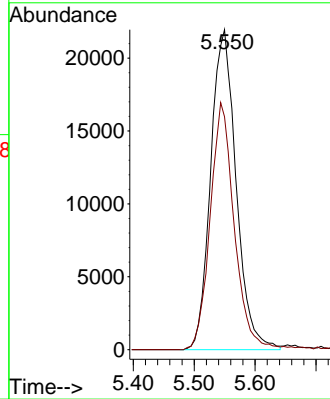
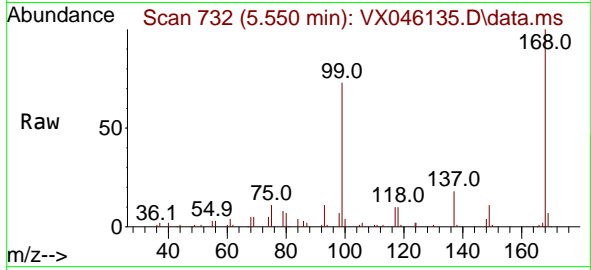




#1  
 Pentafluorobenzene  
 Concen: 50.000 ug/l  
 RT: 5.550 min Scan# 71  
 Delta R.T. 0.006 min  
 Lab File: VX046135.D  
 Acq: 12 May 2025 13:59

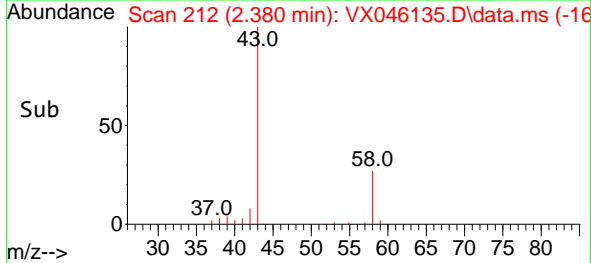
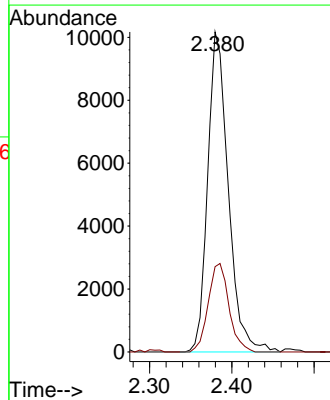
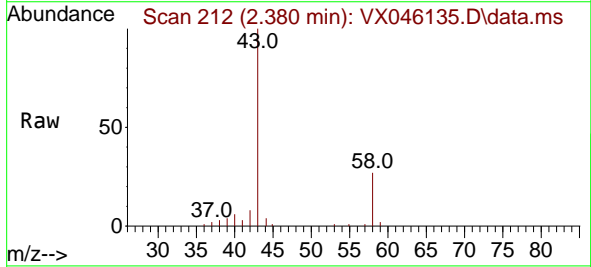
Instrument :  
 MSVOA\_X  
 ClientSampleId :  
 OR-636-COMP-05

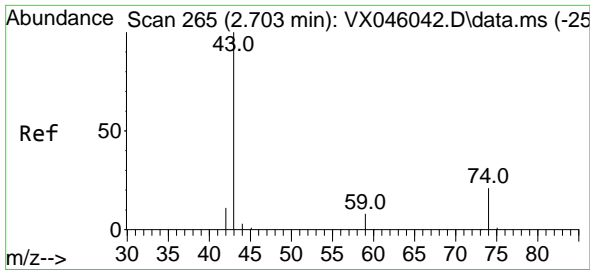
Tgt Ion:168 Resp: 63747  
 Ion Ratio Lower Upper  
 168 100  
 99 72.8 54.9 82.3



#16  
 Acetone  
 Concen: 37.101 ug/l  
 RT: 2.380 min Scan# 212  
 Delta R.T. -0.006 min  
 Lab File: VX046135.D  
 Acq: 12 May 2025 13:59

Tgt Ion: 43 Resp: 17679  
 Ion Ratio Lower Upper  
 43 100  
 58 26.7 21.2 31.8

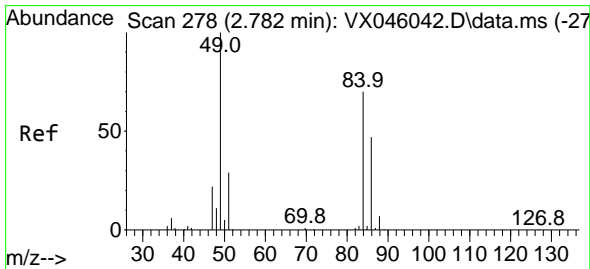
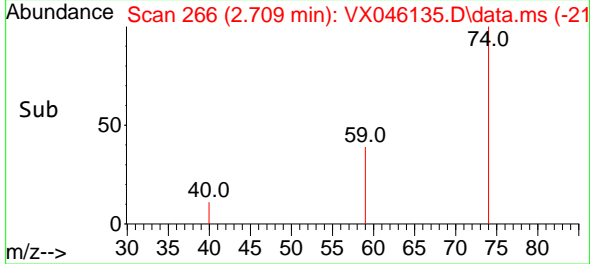
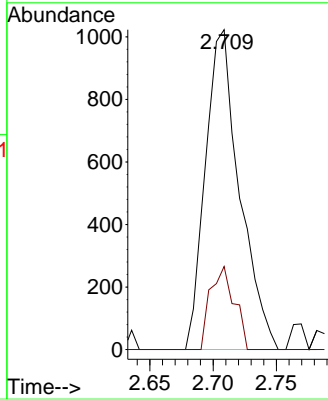
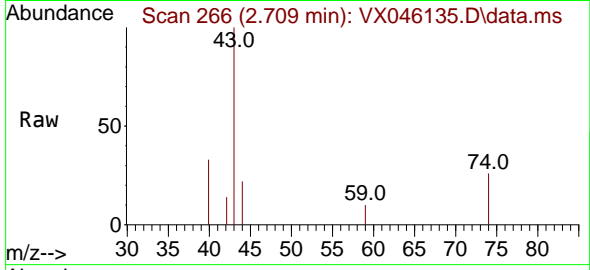




#18  
 Methyl Acetate  
 Concen: 1.739 ug/l  
 RT: 2.709 min Scan# 20  
 Delta R.T. 0.006 min  
 Lab File: VX046135.D  
 Acq: 12 May 2025 13:59

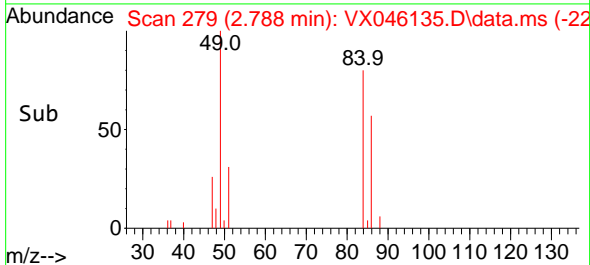
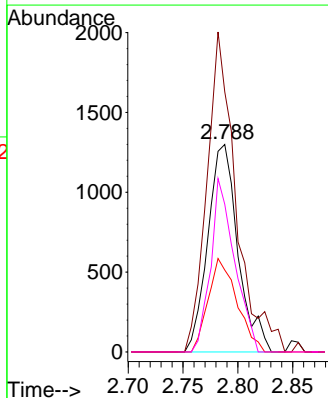
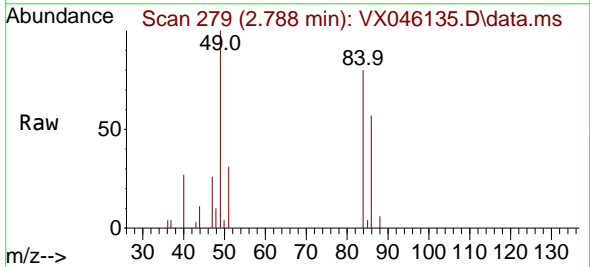
Instrument : MSVOA\_X  
 ClientSampleId : OR-636-COMP-05

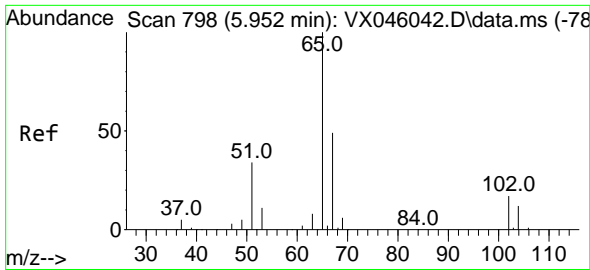
Tgt Ion: 43 Resp: 1923  
 Ion Ratio Lower Upper  
 43 100  
 74 18.2 16.7 25.1



#20  
 Methylene Chloride  
 Concen: 2.727 ug/l  
 RT: 2.788 min Scan# 279  
 Delta R.T. 0.006 min  
 Lab File: VX046135.D  
 Acq: 12 May 2025 13:59

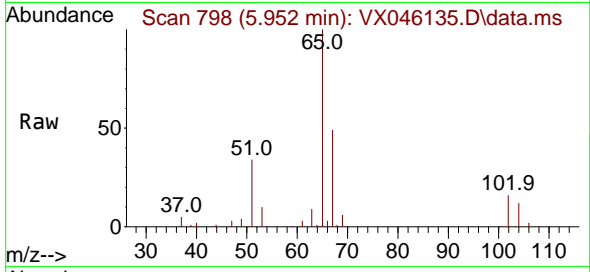
Tgt Ion: 84 Resp: 2490  
 Ion Ratio Lower Upper  
 84 100  
 49 125.3 113.9 170.9  
 51 39.5 33.5 50.3  
 86 71.2 53.8 80.8



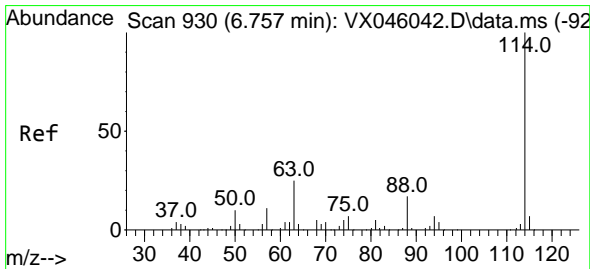
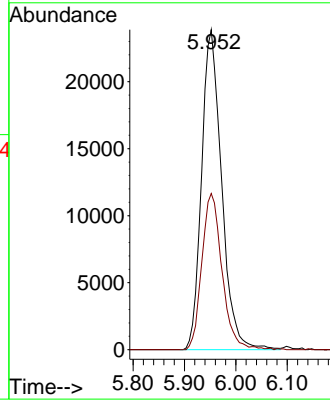
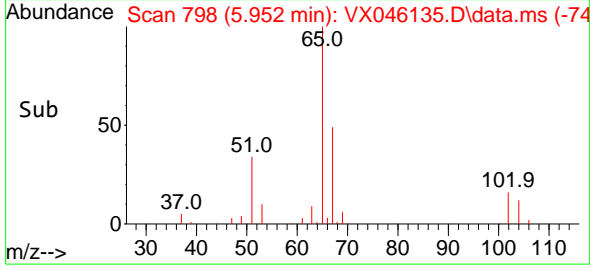


#33  
 1,2-Dichloroethane-d4  
 Concen: 54.453 ug/l  
 RT: 5.952 min Scan# 798  
 Delta R.T. -0.000 min  
 Lab File: VX046135.D  
 Acq: 12 May 2025 13:59

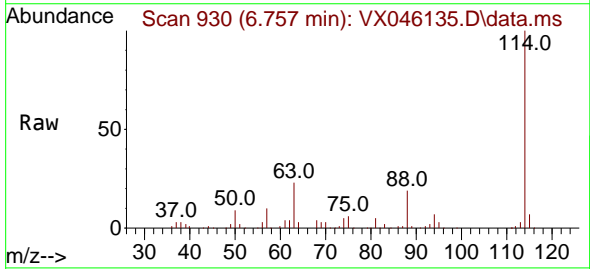
Instrument : MSVOA\_X  
 ClientSampleId : OR-636-COMP-05



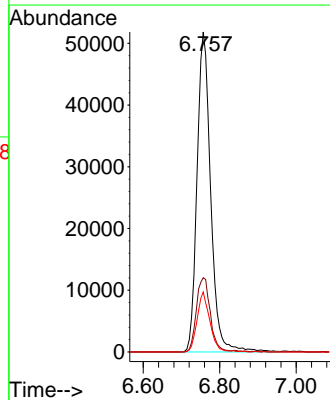
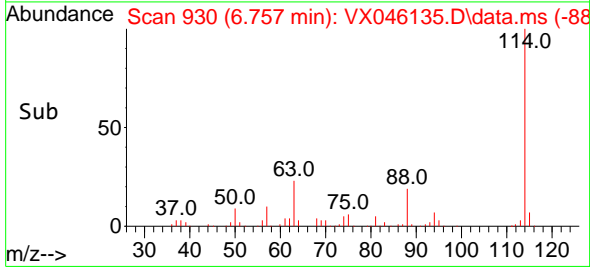
Tgt Ion: 65 Resp: 64715  
 Ion Ratio Lower Upper  
 65 100  
 67 49.0 0.0 99.0

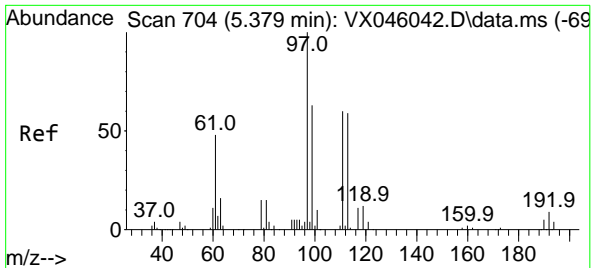


#34  
 1,4-Difluorobenzene  
 Concen: 50.000 ug/l  
 RT: 6.757 min Scan# 930  
 Delta R.T. -0.000 min  
 Lab File: VX046135.D  
 Acq: 12 May 2025 13:59



Tgt Ion: 114 Resp: 128211  
 Ion Ratio Lower Upper  
 114 100  
 63 23.2 0.0 49.2  
 88 18.7 0.0 33.6

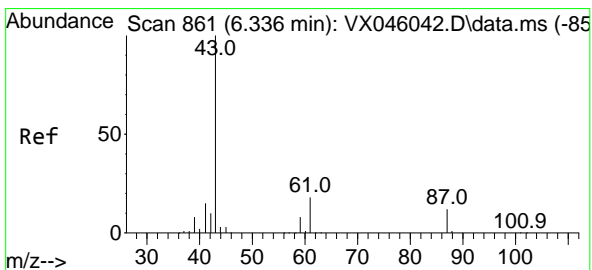
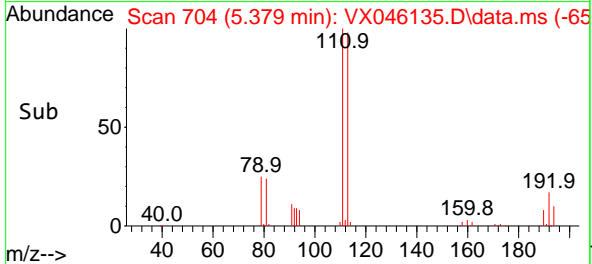
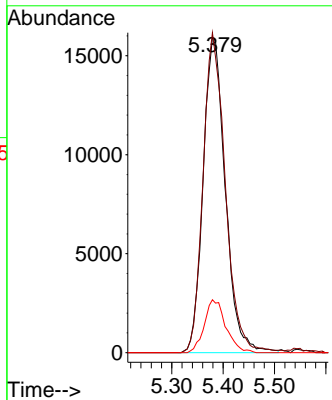
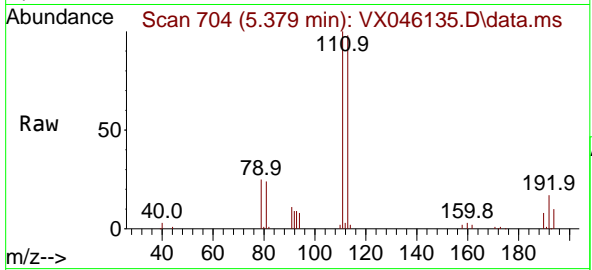




#35  
 Dibromofluoromethane  
 Concen: 51.772 ug/l  
 RT: 5.379 min Scan# 704  
 Delta R.T. -0.000 min  
 Lab File: VX046135.D  
 Acq: 12 May 2025 13:59

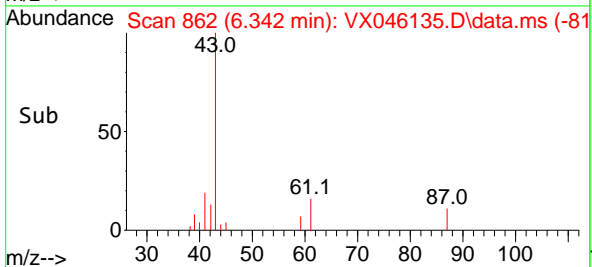
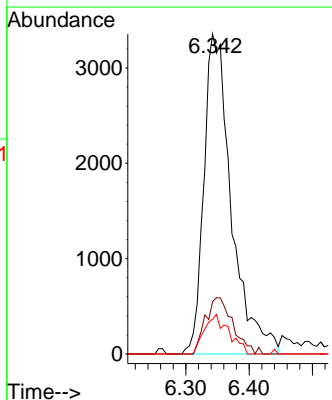
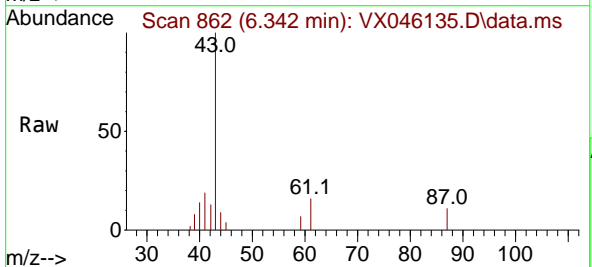
Instrument : MSVOA\_X  
 ClientSampleId : OR-636-COMP-05

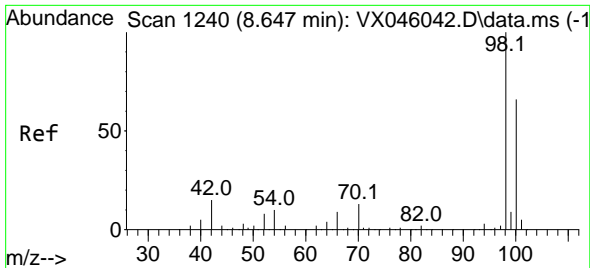
Tgt Ion	Resp	Lower	Upper
113	47799		
113	100		
111	101.7	83.1	124.7
192	16.3	13.3	19.9



#43  
 Isopropyl Acetate  
 Concen: 4.335 ug/l  
 RT: 6.342 min Scan# 862  
 Delta R.T. 0.006 min  
 Lab File: VX046135.D  
 Acq: 12 May 2025 13:59

Tgt Ion	Resp	Lower	Upper
43	10136		
43	100		
61	17.6	14.3	21.5
87	11.0	9.5	14.3

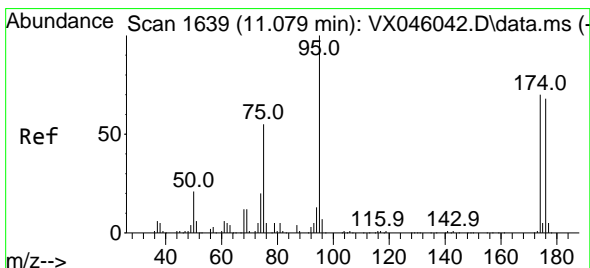
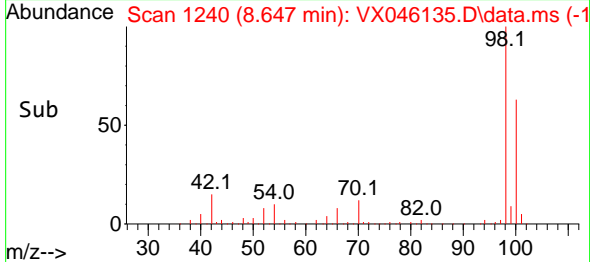
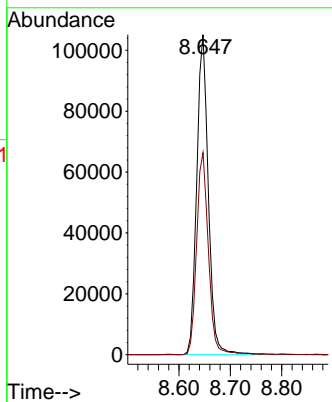
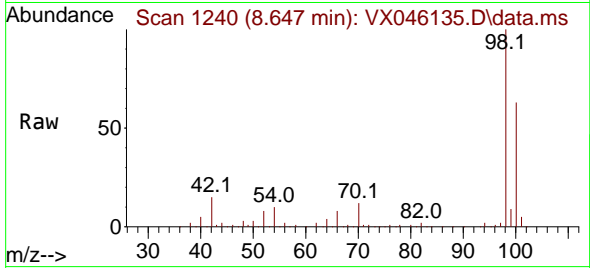




#50  
 Toluene-d8  
 Concen: 51.659 ug/l  
 RT: 8.647 min Scan# 11  
 Delta R.T. -0.000 min  
 Lab File: VX046135.D  
 Acq: 12 May 2025 13:59

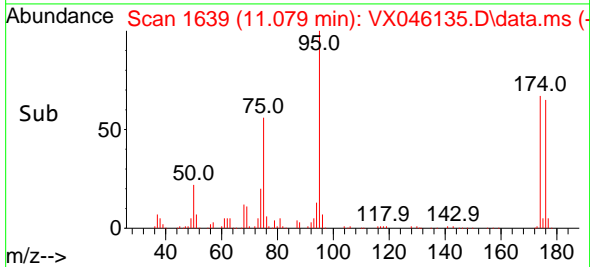
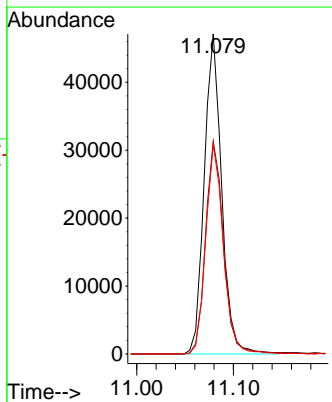
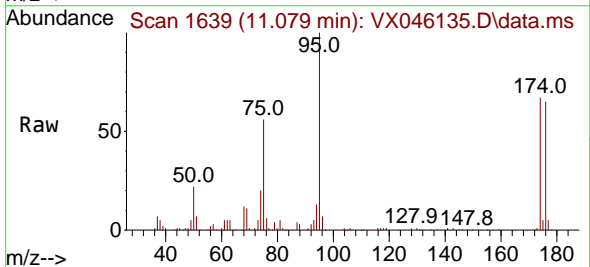
Instrument : MSVOA\_X  
 ClientSampleId : OR-636-COMP-05

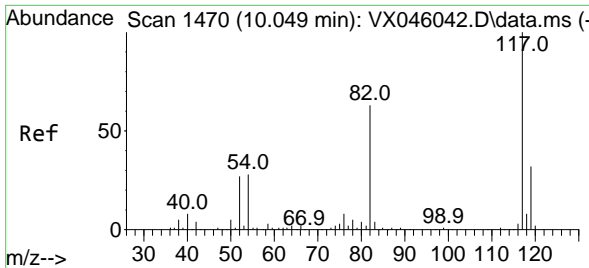
Tgt Ion: 98 Resp: 165076  
 Ion Ratio Lower Upper  
 98 100  
 100 64.2 53.5 80.3



#62  
 4-Bromofluorobenzene  
 Concen: 48.174 ug/l  
 RT: 11.079 min Scan# 1639  
 Delta R.T. -0.000 min  
 Lab File: VX046135.D  
 Acq: 12 May 2025 13:59

Tgt Ion: 95 Resp: 59049  
 Ion Ratio Lower Upper  
 95 100  
 174 68.7 0.0 135.8  
 176 66.3 0.0 131.4

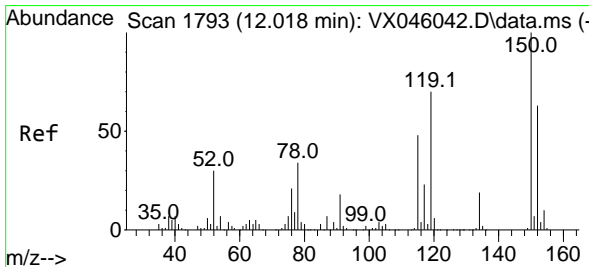
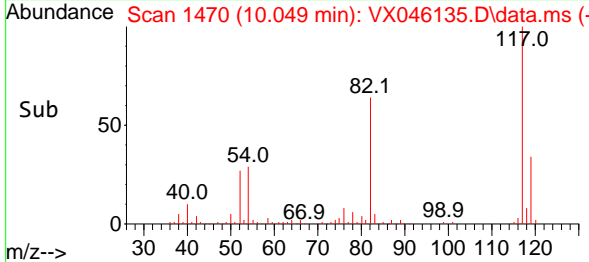
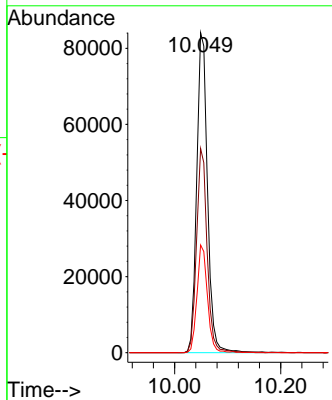
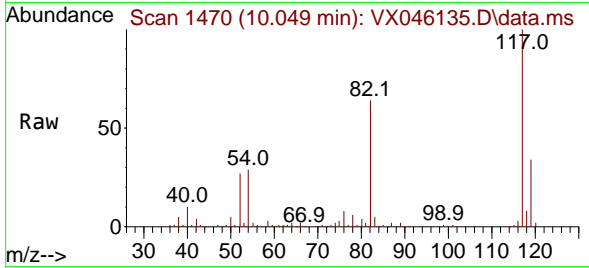




#63  
 Chlorobenzene-d5  
 Concen: 50.000 ug/l  
 RT: 10.049 min Scan# 14  
 Delta R.T. -0.000 min  
 Lab File: VX046135.D  
 Acq: 12 May 2025 13:59

Instrument : MSVOA\_X  
 ClientSampleId : OR-636-COMP-05

Tgt Ion	Resp	Ion Ratio	Lower	Upper
117	118969	100		
82	63.8	50.6	50.6	76.0
119	33.6	25.8	25.8	38.6



#72  
 1,4-Dichlorobenzene-d4  
 Concen: 50.000 ug/l  
 RT: 12.018 min Scan# 1793  
 Delta R.T. -0.000 min  
 Lab File: VX046135.D  
 Acq: 12 May 2025 13:59

Tgt Ion	Resp	Ion Ratio	Lower	Upper
152	48639	100		
115	65.3	46.9	46.9	140.7
150	159.7	0.0	0.0	351.0

