

Data Path : Z:\VOASRV\HPCHEM1\MSVOA X\DATA\VX051320\
 Data File : VX016212.D
 Acq On : 14 May 2020 04:40
 Operator : JC/SP
 Sample : L2626-08
 Misc : 5.0mL/MSVOA X/WATER
 ALS Vial : 51 Sample Multiplier: 1

Instrument :
 MSVOA_X
 ClientSampleId :
 SS052MW731-200512

Quant Time: May 14 06:39:59 2020
 Quant Method : Z:\VOASRV\HPCHEM1\MSVOA_X\METHOD\82X050420W.M
 Quant Title : SW846 8260
 QLast Update : Wed May 06 06:43:32 2020
 Response via : Initial Calibration

Internal Standards	R.T.	QIon	Response	Conc	Units	Dev(Min)
1) Pentafluorobenzene	5.63	168	266277	50.00	ug/l	0.00
34) 1,4-Difluorobenzene	6.84	114	436904	50.00	ug/l	0.00
63) Chlorobenzene-d5	10.10	117	431546	50.00	ug/l	0.00
72) 1,4-Dichlorobenzene-d4	12.06	152	216329	50.00	ug/l	0.00

System Monitoring Compounds

33) 1,2-Dichloroethane-d4	6.04	65	162324	46.33	ug/l	0.00
Spiked Amount	50.000		Recovery	=	92.66%	
35) Dibromofluoromethane	5.47	113	129354	46.73	ug/l	0.00
Spiked Amount	50.000		Recovery	=	93.46%	
50) Toluene-d8	8.70	98	541520	50.77	ug/l	0.00
Spiked Amount	50.000		Recovery	=	101.54%	
62) 4-Bromofluorobenzene	11.12	95	212897	52.48	ug/l	0.00
Spiked Amount	50.000		Recovery	=	104.96%	

Target Compounds

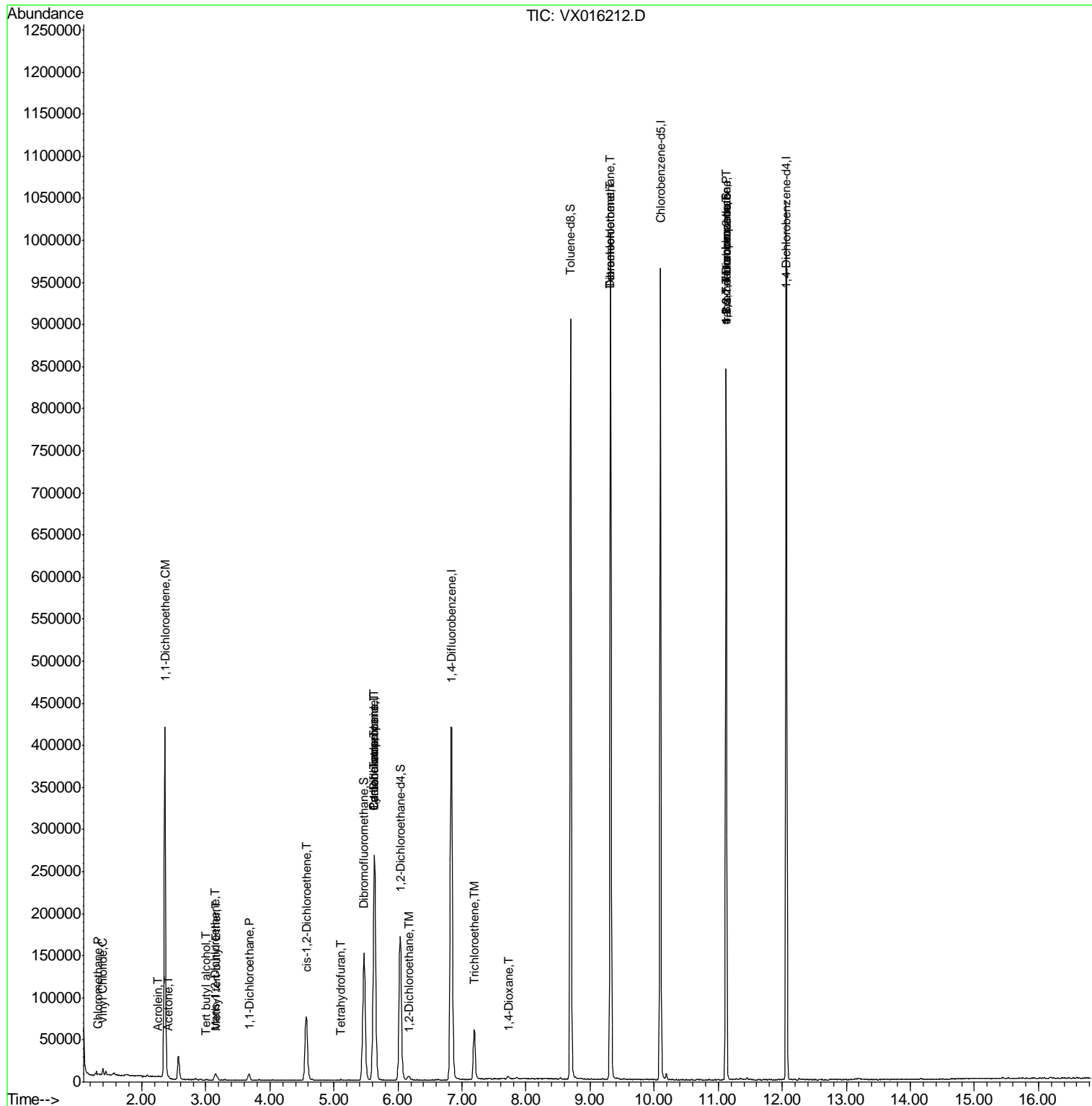
					Qvalue	
3) Chloromethane	1.32	50	1077	0.329	ug/l	92
4) Vinyl Chloride	1.39	62	2921	0.836	ug/l	99
11) Tert butyl alcohol	3.01	59	858	0.968	ug/l #	72
12) 1,1-Dichloroethene	2.36	96	139778	50.498	ug/l	96
13) Acrolein	2.26	56	345	0.622	ug/l #	54
16) Acetone	2.42	43	2163	1.384	ug/l	94
17) Carbon Disulfide	2.56	76	1038	Below Cal	#	88
19) Methyl tert-butyl Ether	3.17	73	4473	0.469	ug/l	99
21) trans-1,2-Dichloroethene	3.14	96	3016	0.978	ug/l	90
24) 1,1-Dichloroethane	3.68	63	8645	1.614	ug/l	97
27) cis-1,2-Dichloroethene	4.56	96	49480	14.673	ug/l	89
29) Tetrahydrofuran	5.12	42	973	0.583	ug/l #	69
31) Cyclohexane	5.63	56	4833	0.993	ug/l #	1
36) 1,1-Dichloropropene	5.63	75	19227	4.471	ug/l #	49
38) Carbon Tetrachloride	5.63	117	24698	5.650	ug/l #	15
42) 1,2-Dichloroethane	6.17	62	4119	0.909	ug/l	98
44) Trichloroethene	7.19	130	23005	5.146	ug/l	99
49) 1,4-Dioxane	7.72	88	2215	24.507	ug/l #	87
60) Dibromochloromethane	9.32	129	187263	55.098	ug/l #	11
64) Tetrachloroethene	9.32	164	204179	38.540	ug/l	97
75) 1,1,2,2-Tetrachloroethane	11.12	83	180	2.110	ug/l #	1
76) 1,2,3-Trichloropropane	11.12	75	104827	21.354	ug/l #	35
81) trans-1,4-Dichloro-2-buten	11.12	75	104827	50.888	ug/l #	13

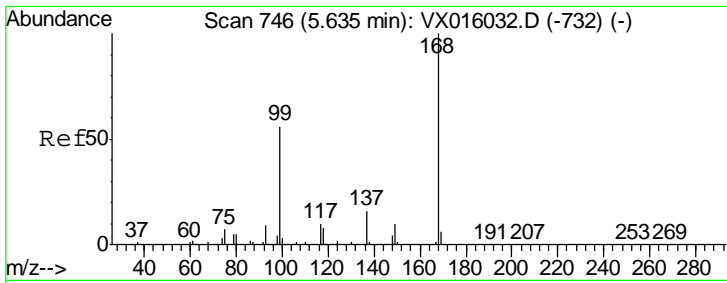
(#) = qualifier out of range (m) = manual integration (+) = signals summed

Data Path : Z:\VOASRV\HPCHEM1\MSVOA X\DATA\VX051320\
 Data File : VX016212.D
 Acq On : 14 May 2020 04:40
 Operator : JC/SP
 Sample : L2626-08
 Misc : 5.0mL/MSVOA X/WATER
 ALS Vial : 51 Sample Multiplier: 1

Instrument :
 MSVOA_X
 Client Sample ID :
 SS052MW731-200512

Quant Time: May 14 06:39:59 2020
 Quant Method : Z:\VOASRV\HPCHEM1\MSVOA_X\METHOD\82X050420W.M
 Quant Title : SW846 8260
 QLast Update : Wed May 06 06:43:32 2020
 Response via : Initial Calibration

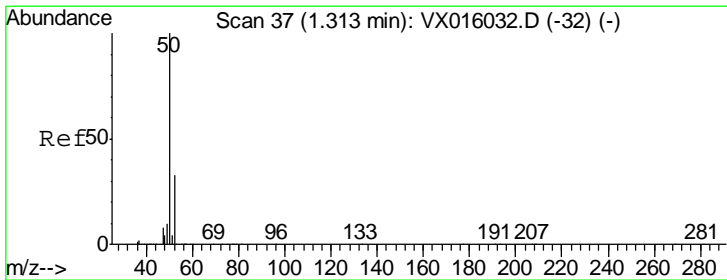
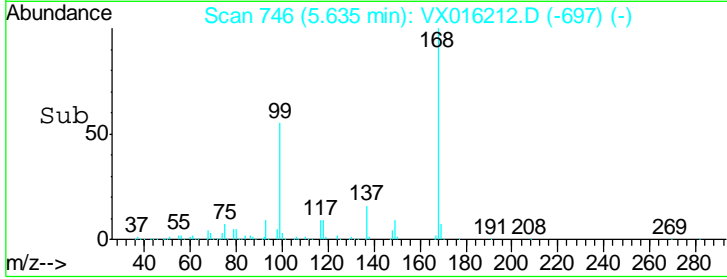
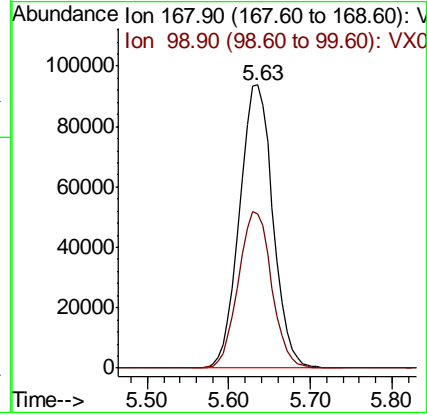
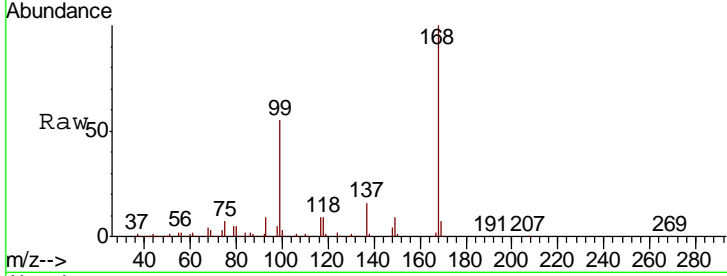




#1
 Pentafluorobenzene
 Concen: 50.000 ug/l
 RT: 5.63 min Scan# 746
 Delta R.T. -0.00 min
 Lab File: VX016212.D
 Acq: 14 May 2020 04:40

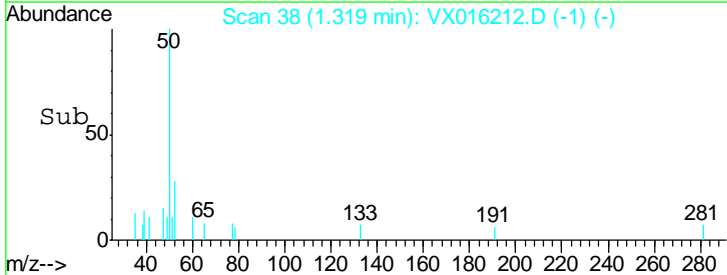
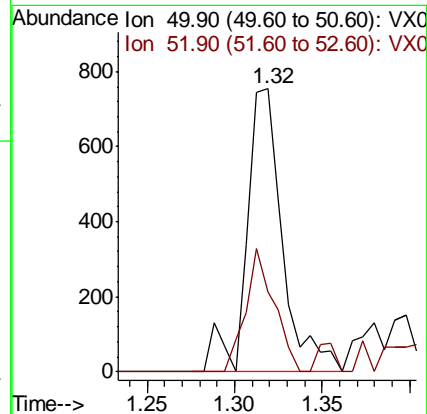
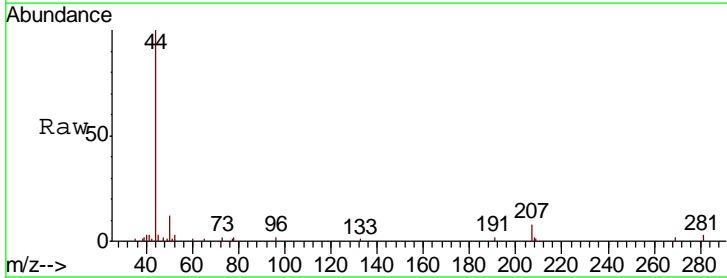
Instrument :
 MSVOA_X
 ClientSampleId :
 SS052MW731-200512

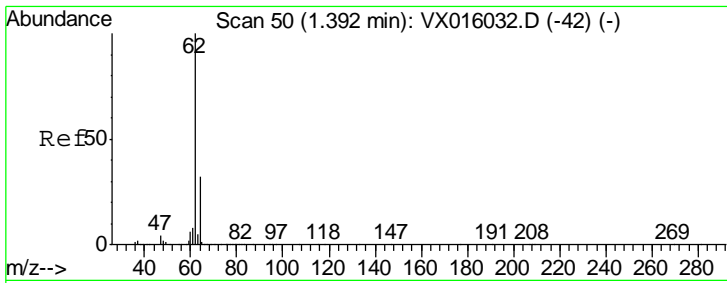
Tgt Ion: 168 Resp: 266277
 Ion Ratio Lower Upper
 168 100
 99 54.5 45.0 67.4



#3
 Chloromethane
 Concen: 0.329 ug/l
 RT: 1.32 min Scan# 38
 Delta R.T. 0.01 min
 Lab File: VX016212.D
 Acq: 14 May 2020 04:40

Tgt Ion: 50 Resp: 1077
 Ion Ratio Lower Upper
 50 100
 52 28.2 26.1 39.1

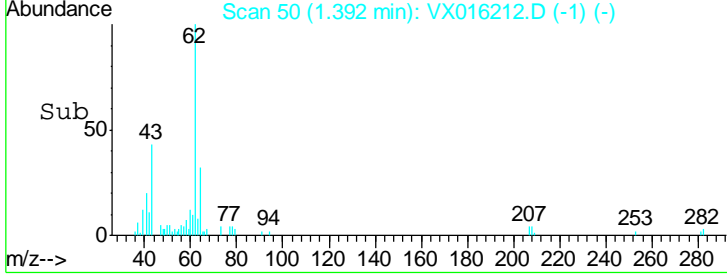
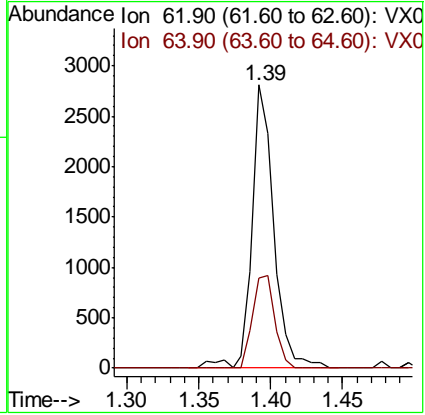
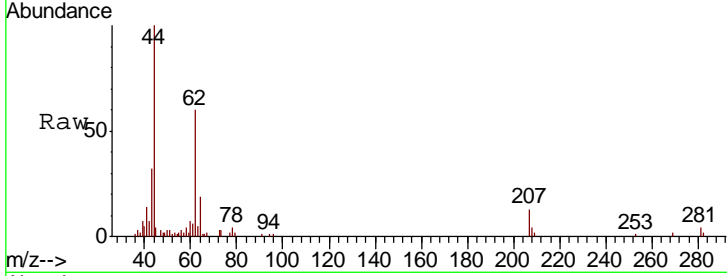




#4
 Vinyl Chloride
 Concen: 0.836 ug/l
 RT: 1.39 min Scan# 50
 Delta R.T. -0.00 min
 Lab File: VX016212.D
 Acq: 14 May 2020 04:40

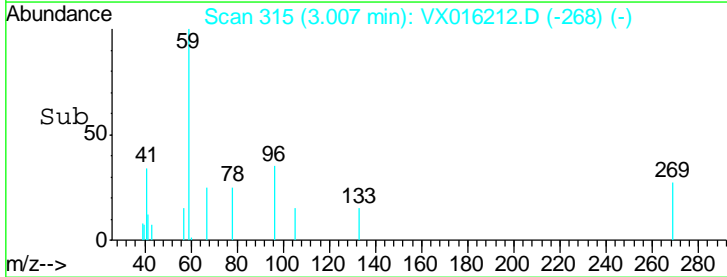
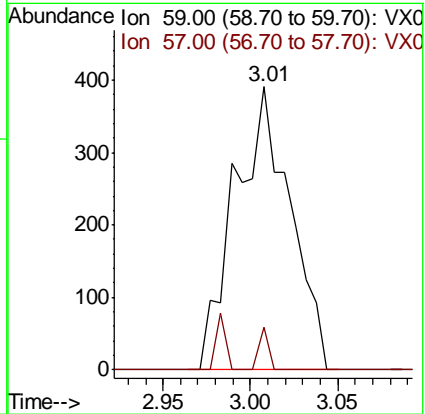
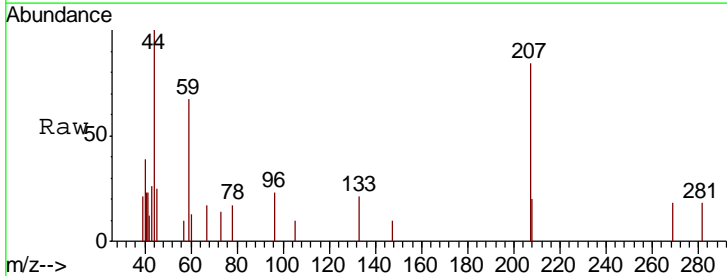
Instrument :
 MSVOA_X
ClientSampled :
 SS052MW731-200512

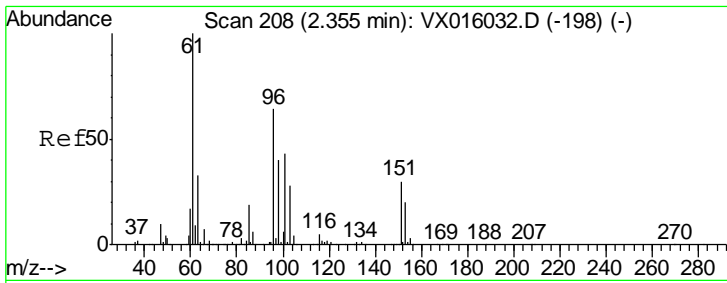
Tgt Ion	Resp	Lower	Upper
62	100		
64	31.7	25.7	38.5



#11
 Tert butyl alcohol
 Concen: 0.968 ug/l
 RT: 3.01 min Scan# 315
 Delta R.T. -0.01 min
 Lab File: VX016212.D
 Acq: 14 May 2020 04:40

Tgt Ion	Resp	Lower	Upper
59	100		
57	0.0	8.2	12.4#

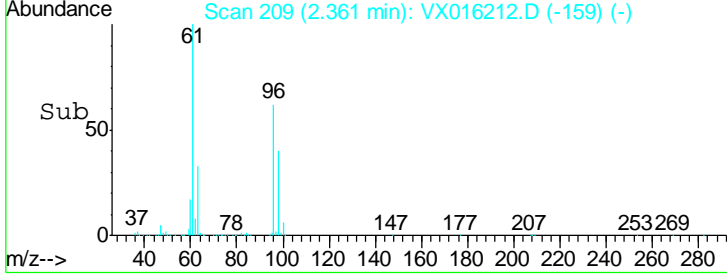
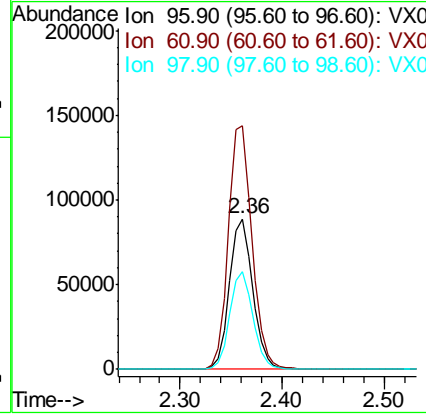
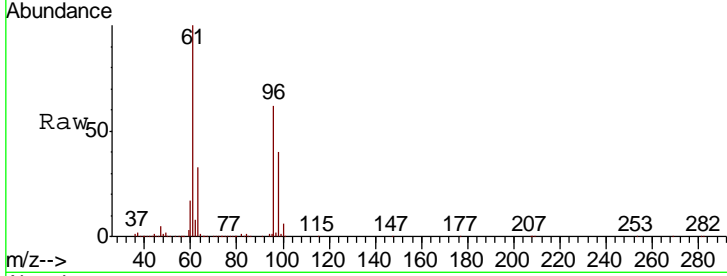




#12
 1,1-Dichloroethene
 Concen: 50.498 ug/l
 RT: 2.36 min Scan# 209
 Delta R.T. 0.01 min
 Lab File: VX016212.D
 Acq: 14 May 2020 04:40

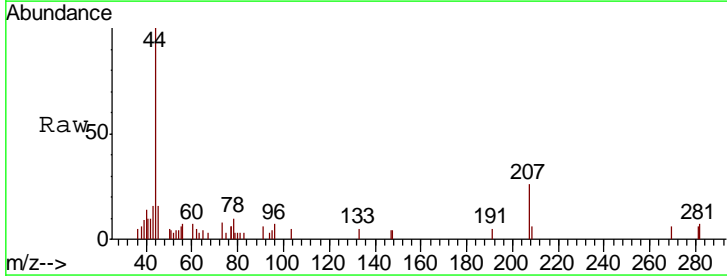
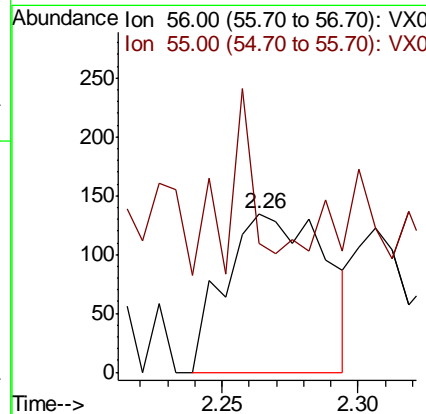
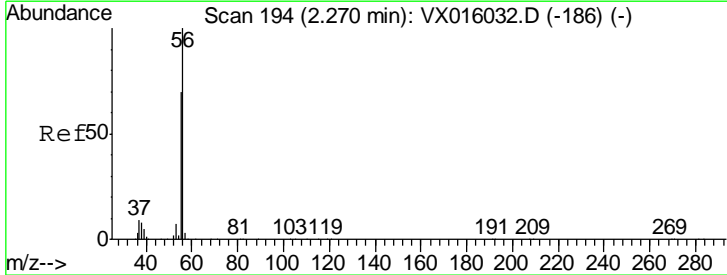
Instrument :
 MSVOA_X
ClientSampled :
 SS052MW731-200512

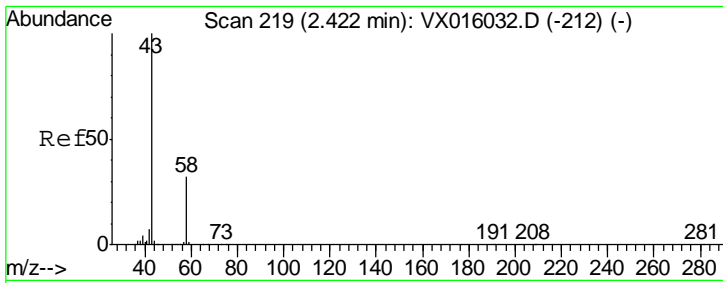
Tgt Ion	Resp	Lower	Upper
96	139778		
61	100	124.8	187.2
98	64.7	49.7	74.5



#13
 Acrolein
 Concen: 0.622 ug/l
 RT: 2.26 min Scan# 193
 Delta R.T. -0.01 min
 Lab File: VX016212.D
 Acq: 14 May 2020 04:40

Tgt Ion	Resp	Lower	Upper
56	345		
55	100	56.5	84.7#
	32.5		

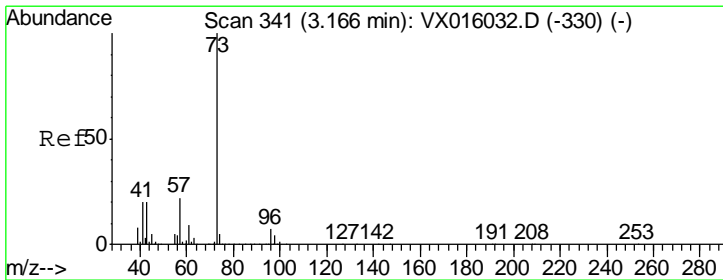
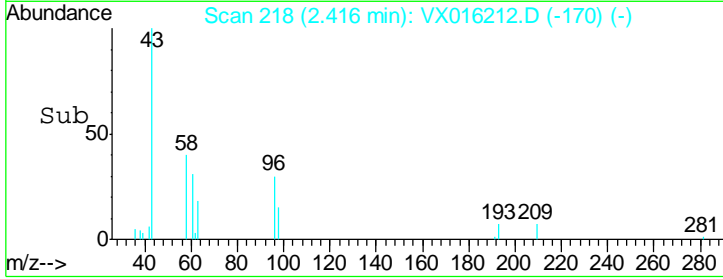
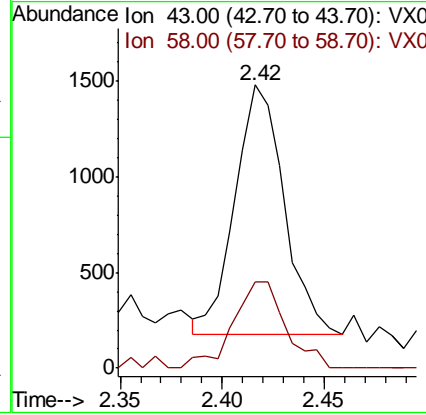
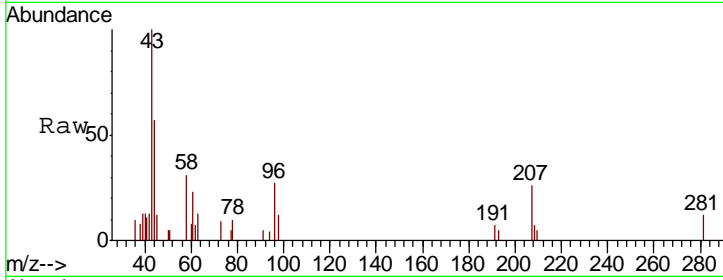




#16
 Acetone
 Concen: 1.384 ug/l
 RT: 2.42 min Scan# 218
 Delta R.T. -0.01 min
 Lab File: VX016212.D
 Acq: 14 May 2020 04:40

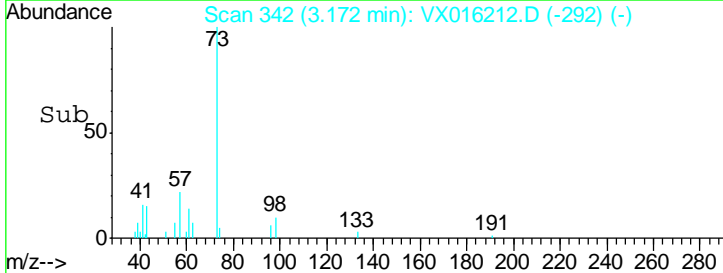
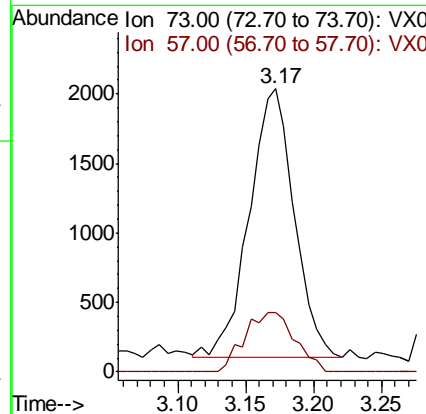
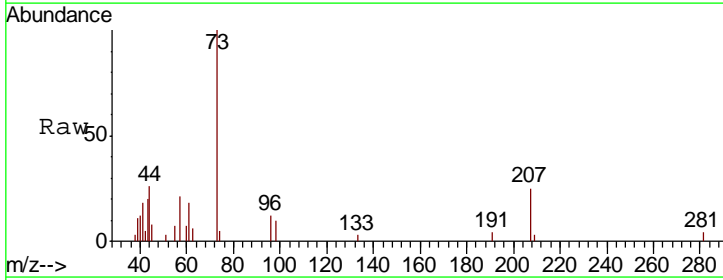
Instrument :
 MSVOA_X
 ClientSampleId :
 SS052MW731-200512

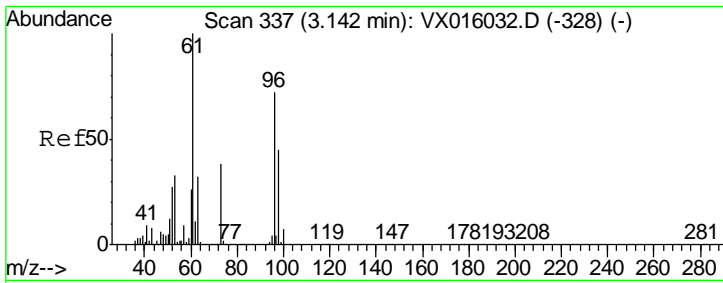
Tgt Ion: 43 Resp: 2163
 Ion Ratio Lower Upper
 43 100
 58 34.8 25.4 38.0



#19
 Methyl tert-butyl Ether
 Concen: 0.469 ug/l
 RT: 3.17 min Scan# 342
 Delta R.T. 0.01 min
 Lab File: VX016212.D
 Acq: 14 May 2020 04:40

Tgt Ion: 73 Resp: 4473
 Ion Ratio Lower Upper
 73 100
 57 21.9 17.8 26.6

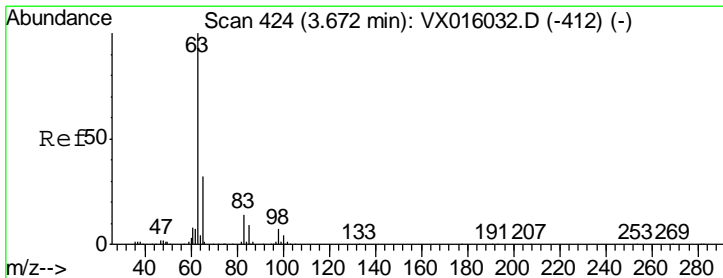
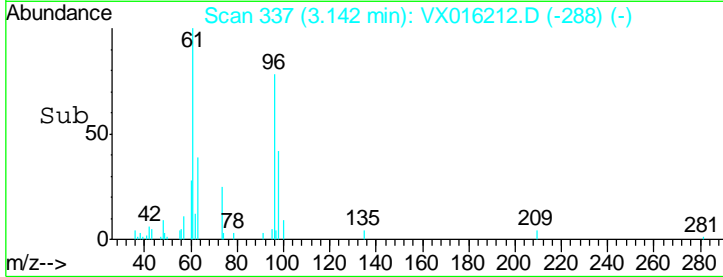
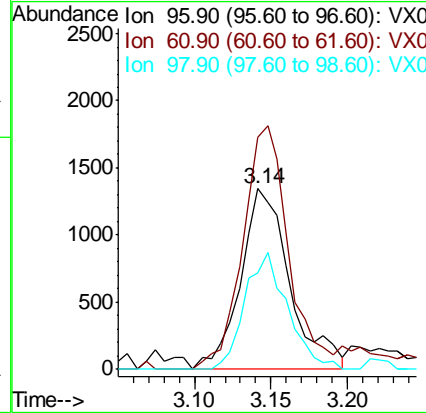
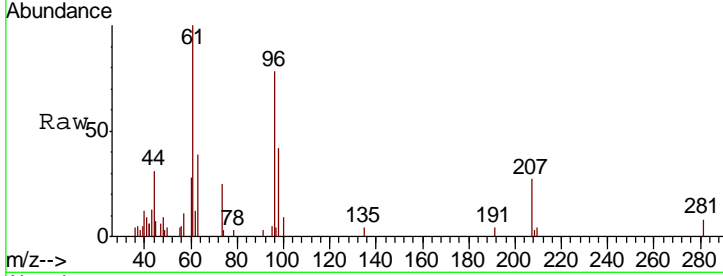




#21
 trans-1,2-Dichloroethene
 Concen: 0.978 ug/l
 RT: 3.14 min Scan# 337
 Delta R.T. -0.00 min
 Lab File: VX016212.D
 Acq: 14 May 2020 04:40

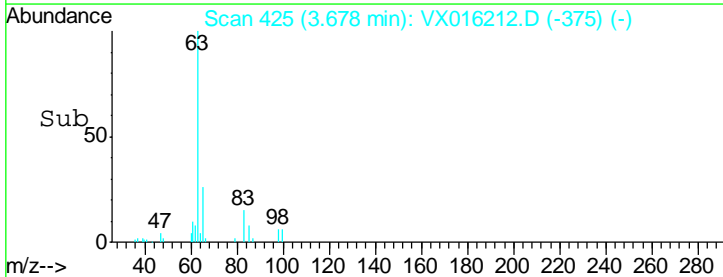
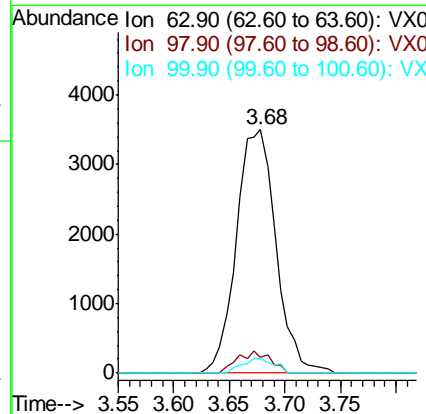
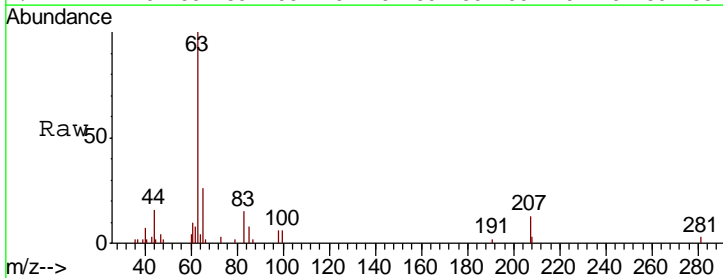
Instrument :
 MSVOA_X
 ClientSampleId :
 SS052MW731-200512

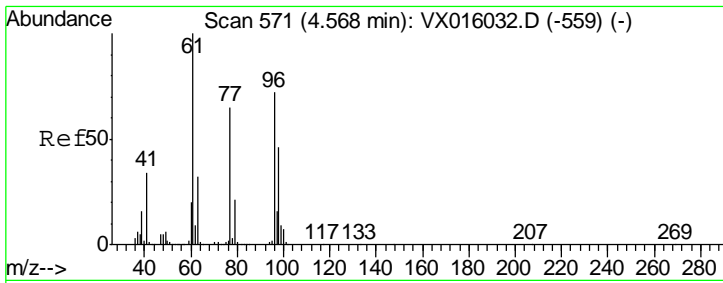
Tgt Ion	Resp	Lower	Upper
96	3016		
61	100	111.2	166.8
98	53.3	50.2	75.4



#24
 1,1-Dichloroethane
 Concen: 1.614 ug/l
 RT: 3.68 min Scan# 425
 Delta R.T. 0.01 min
 Lab File: VX016212.D
 Acq: 14 May 2020 04:40

Tgt Ion	Resp	Lower	Upper
63	8645		
98	100	3.5	10.5
100	6.0	2.1	6.5

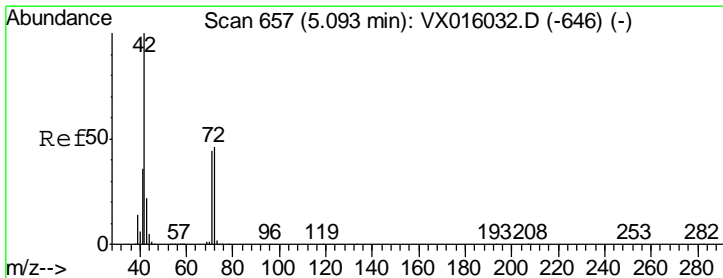
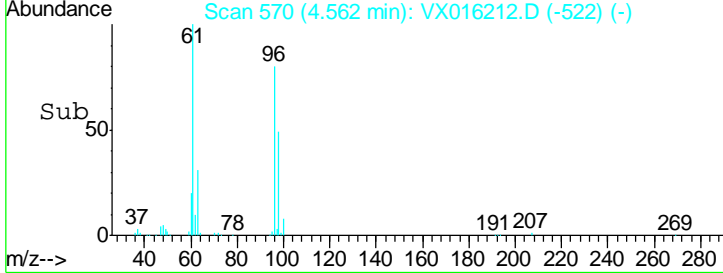
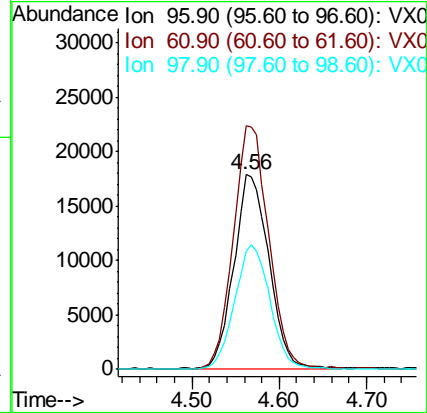
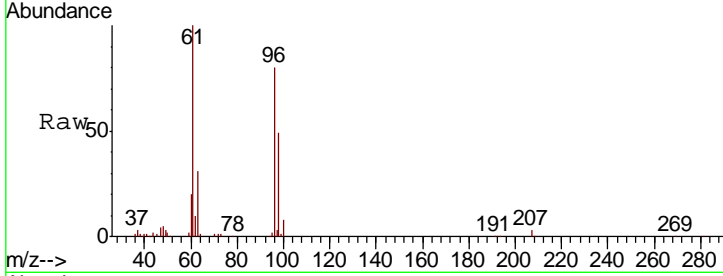




#27
 cis-1,2-Dichloroethene
 Concen: 14.673 ug/l
 RT: 4.56 min Scan# 570
 Delta R.T. -0.01 min
 Lab File: VX016212.D
 Acq: 14 May 2020 04:40

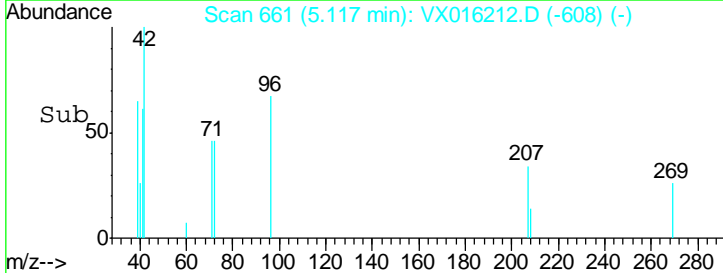
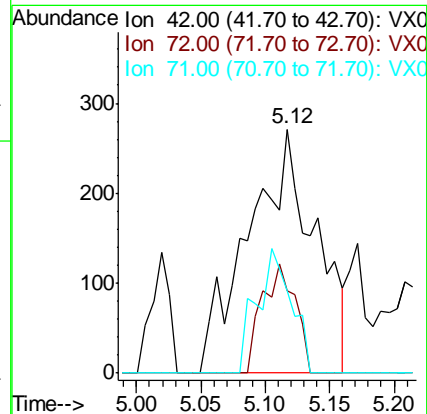
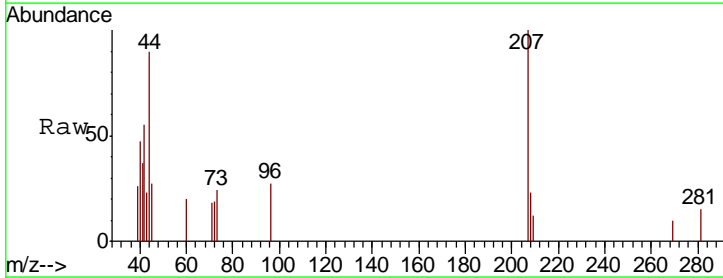
Instrument :
 MSVOA_X
 ClientSampleId :
 SS052MW731-200512

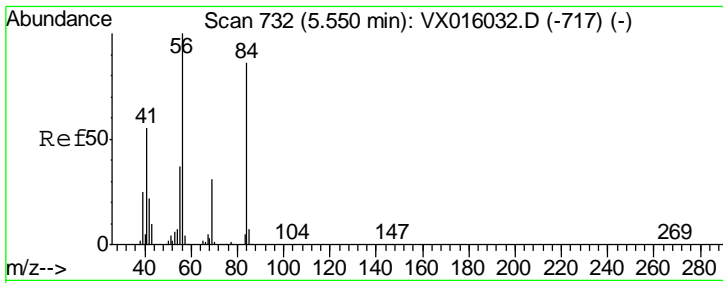
Tgt Ion	Resp	Lower	Upper
96	49480		
61	128.0	0.0	296.2
98	64.8	0.0	129.4



#29
 Tetrahydrofuran
 Concen: 0.583 ug/l
 RT: 5.12 min Scan# 661
 Delta R.T. 0.02 min
 Lab File: VX016212.D
 Acq: 14 May 2020 04:40

Tgt Ion	Resp	Lower	Upper
42	973		
72	22.4	37.1	55.7#
71	26.4	34.5	51.7#

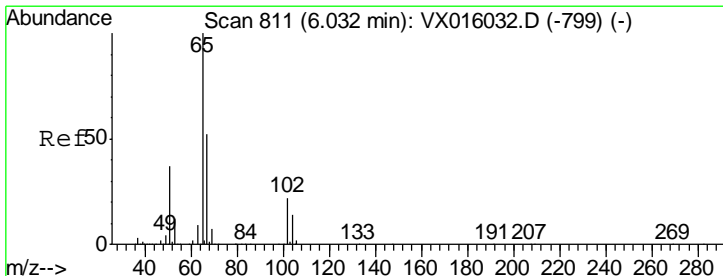
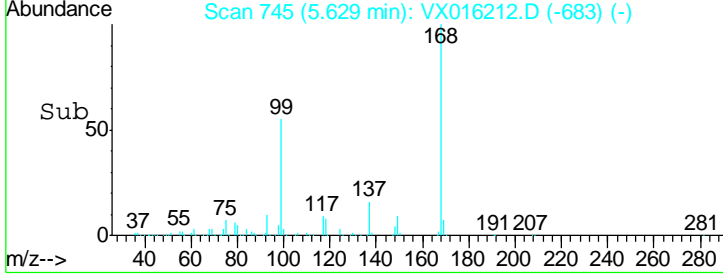
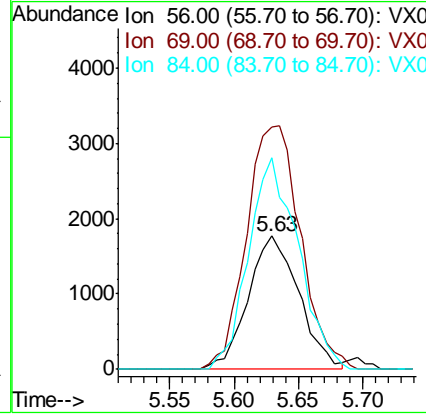
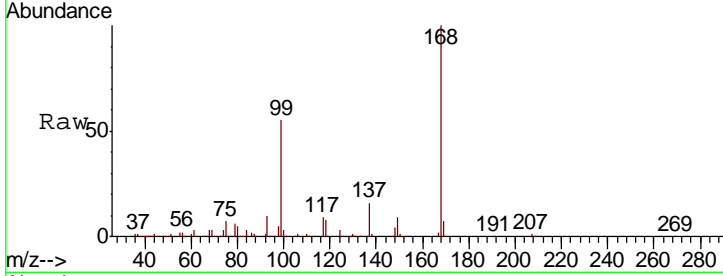




#31
 Cyclohexane
 Concen: 0.993 ug/l
 RT: 5.63 min Scan# 745
 Delta R.T. 0.08 min
 Lab File: VX016212.D
 Acq: 14 May 2020 04:40

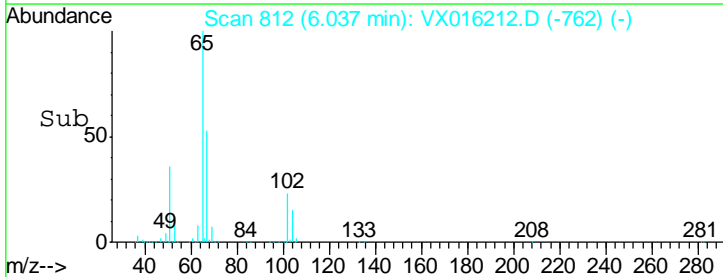
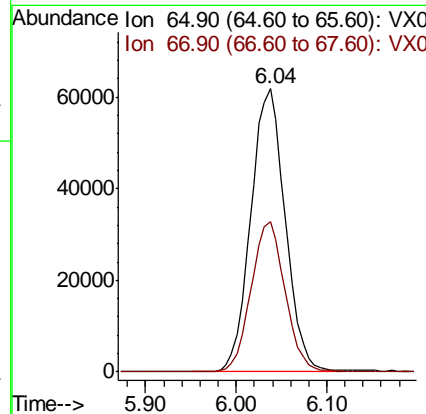
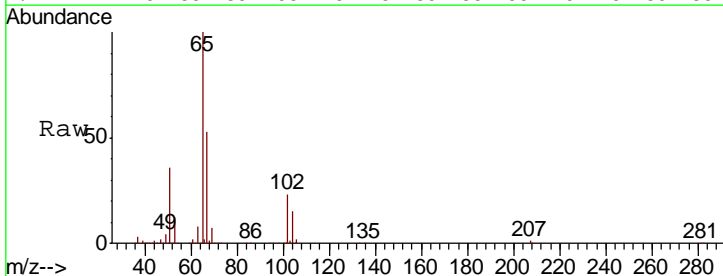
Instrument :
 MSVOA_X
 ClientSampled :
 SS052MW731-200512

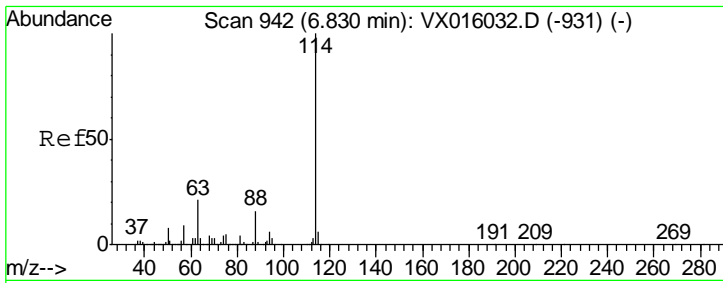
Tgt Ion	Resp	Lower	Upper
56	4833		
69	181.9	25.0	37.6#
84	158.8	69.0	103.6#



#33
 1,2-Dichloroethane-d4
 Concen: 46.326 ug/l
 RT: 6.04 min Scan# 812
 Delta R.T. 0.01 min
 Lab File: VX016212.D
 Acq: 14 May 2020 04:40

Tgt Ion	Resp	Lower	Upper
65	162324		
67	52.7	0.0	104.8

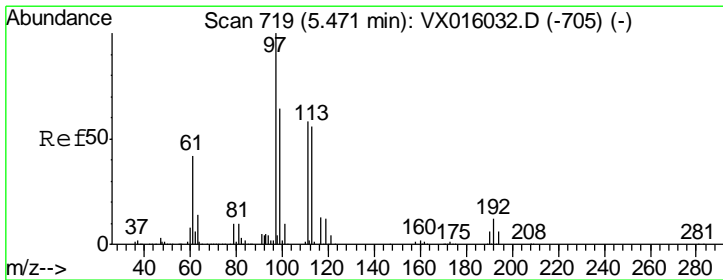
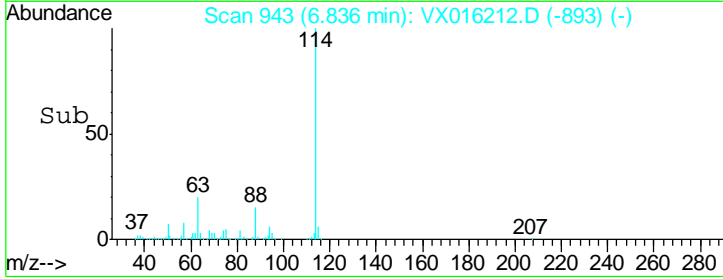
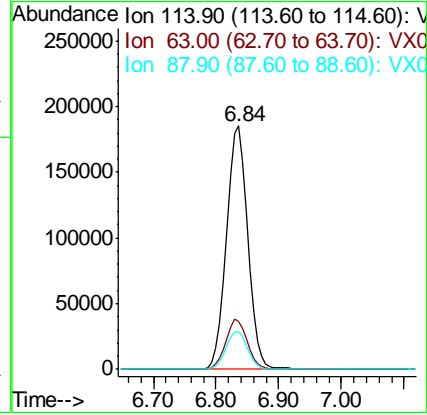
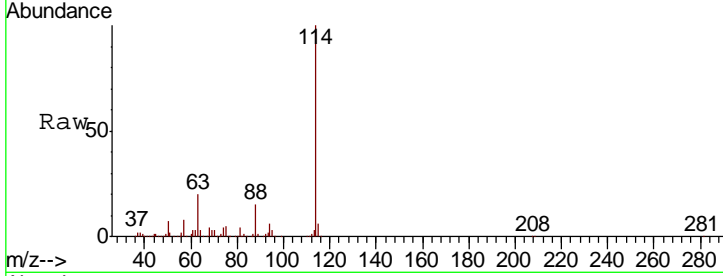




#34
 1,4-Difluorobenzene
 Concen: 50.000 ug/l
 RT: 6.84 min Scan# 943
 Delta R.T. 0.01 min
 Lab File: VX016212.D
 Acq: 14 May 2020 04:40

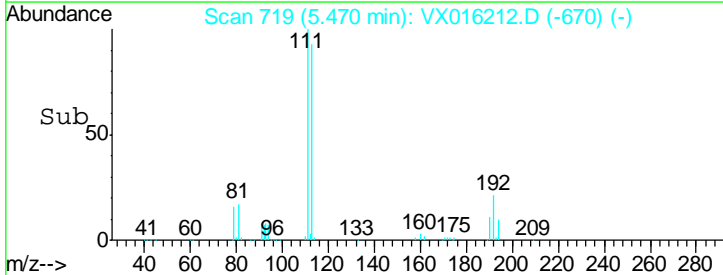
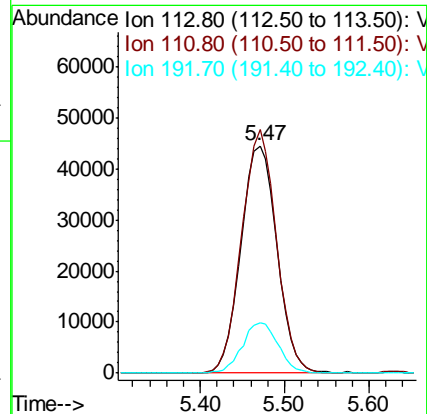
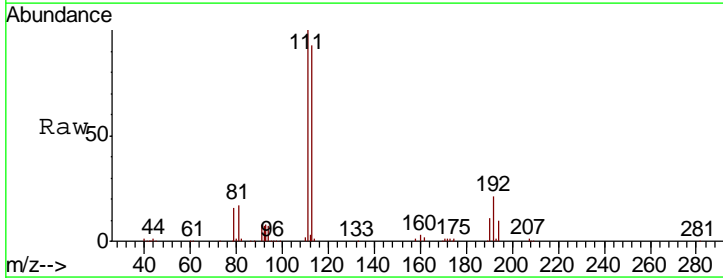
Instrument :
 MSVOA_X
 ClientSampleID :
 SS052MW731-200512

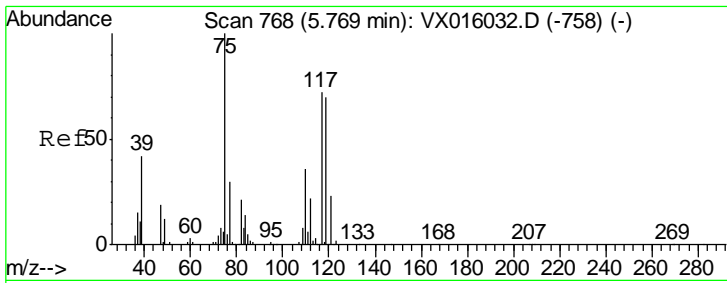
Tgt Ion	Resp	Lower	Upper
114	436904		
63	19.7	0.0	42.8
88	15.4	0.0	31.4



#35
 Dibromofluoromethane
 Concen: 46.732 ug/l
 RT: 5.47 min Scan# 719
 Delta R.T. -0.00 min
 Lab File: VX016212.D
 Acq: 14 May 2020 04:40

Tgt Ion	Resp	Lower	Upper
113	129354		
111	102.9	81.6	122.4
192	22.0	17.0	25.4

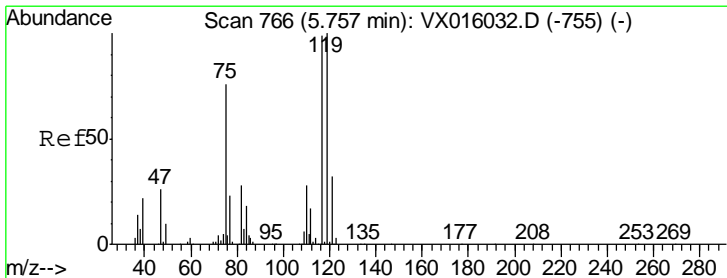
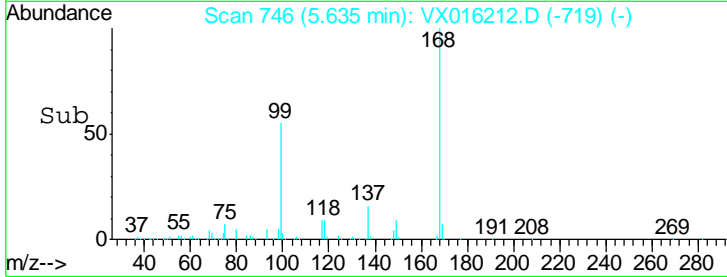
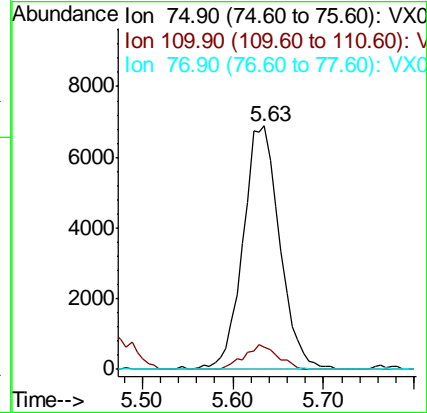
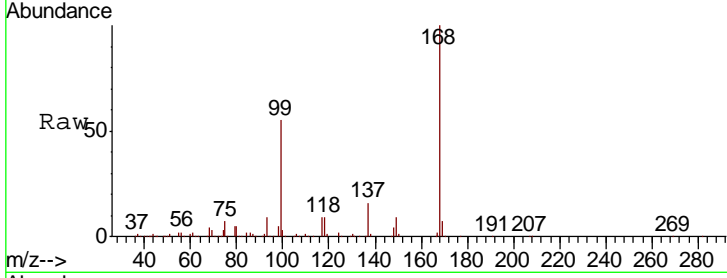




#36
 1,1-Dichloropropene
 Concen: 4.471 ug/l
 RT: 5.63 min Scan# 746
 Delta R.T. -0.13 min
 Lab File: VX016212.D
 Acq: 14 May 2020 04:40

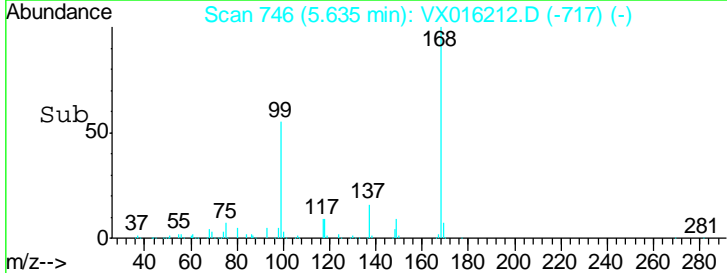
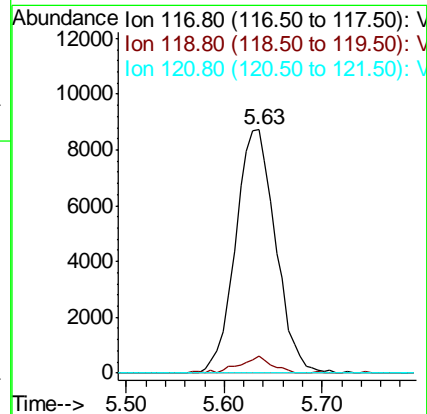
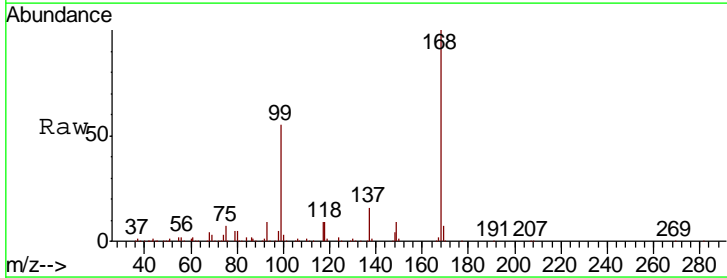
Instrument :
 MSVOA_X
 ClientSampled :
 SS052MW731-200512

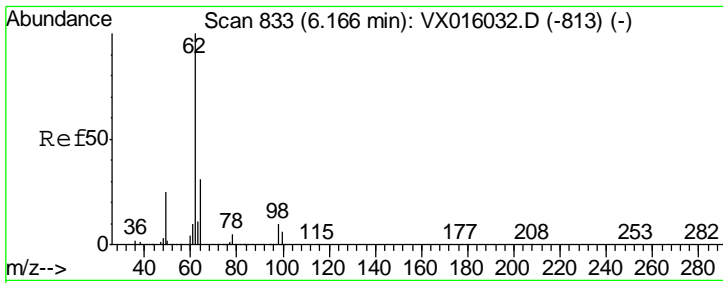
Tgt Ion	Resp	Lower	Upper
75	19227		
110	9.1	18.1	54.1#
77	0.0	25.0	37.6#



#38
 Carbon Tetrachloride
 Concen: 5.650 ug/l
 RT: 5.63 min Scan# 746
 Delta R.T. -0.12 min
 Lab File: VX016212.D
 Acq: 14 May 2020 04:40

Tgt Ion	Resp	Lower	Upper
117	24698		
119	7.0	80.3	120.5#
121	0.0	25.7	38.5#

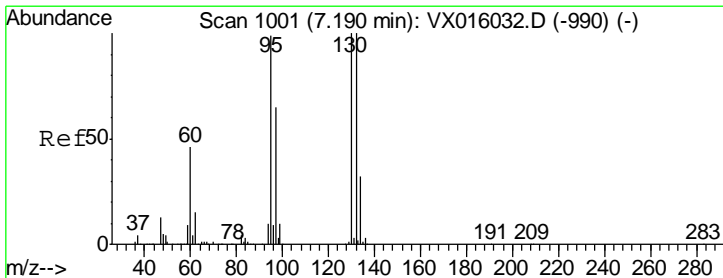
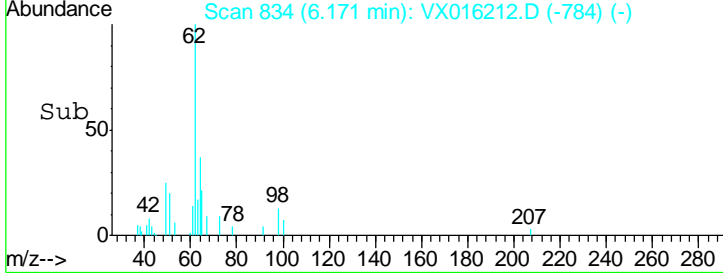
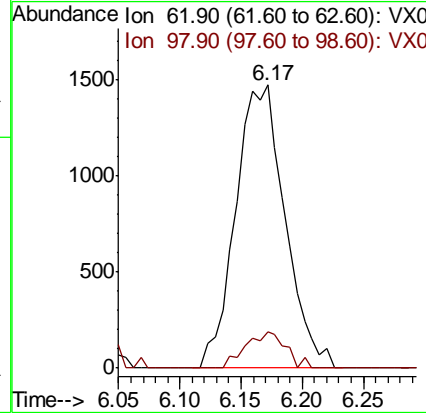
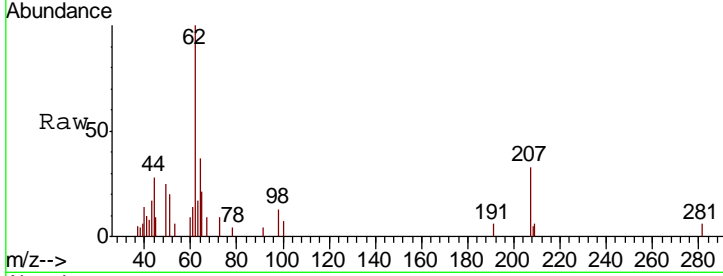




#42
 1,2-Dichloroethane
 Concen: 0.909 ug/l
 RT: 6.17 min Scan# 834
 Delta R.T. 0.01 min
 Lab File: VX016212.D
 Acq: 14 May 2020 04:40

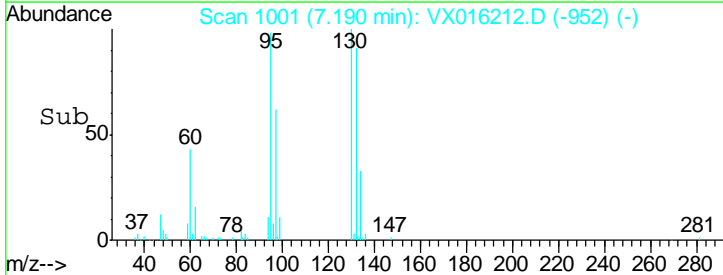
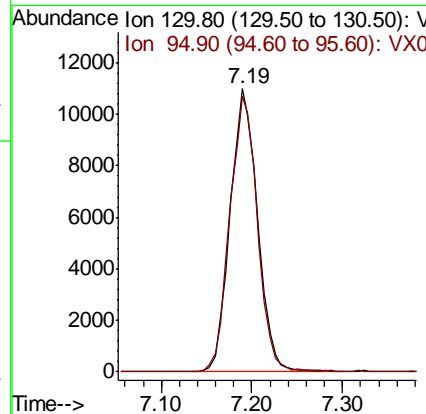
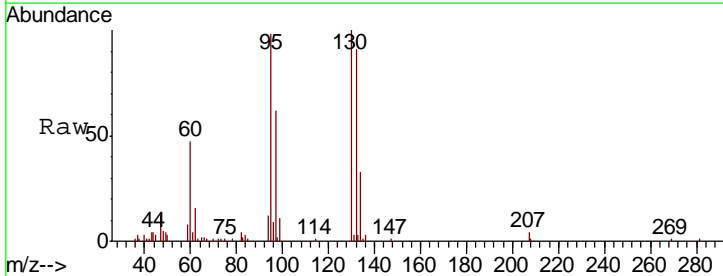
Instrument :
 MSVOA_X
ClientSampled :
 SS052MW731-200512

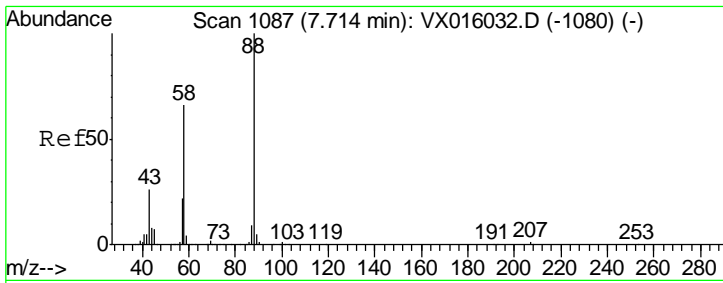
Tgt Ion	Resp	Lower	Upper
62	100		
98	10.4	0.0	19.4



#44
 Trichloroethene
 Concen: 5.146 ug/l
 RT: 7.19 min Scan# 1001
 Delta R.T. -0.00 min
 Lab File: VX016212.D
 Acq: 14 May 2020 04:40

Tgt Ion	Resp	Lower	Upper
130	100		
95	97.6	0.0	197.4

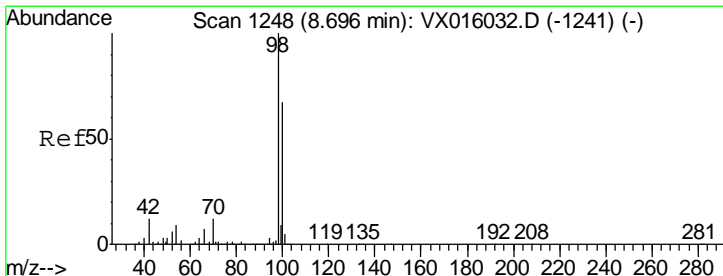
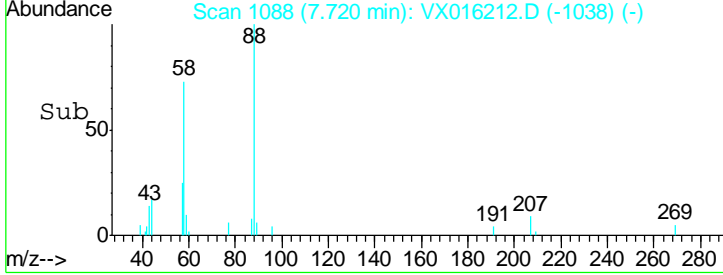
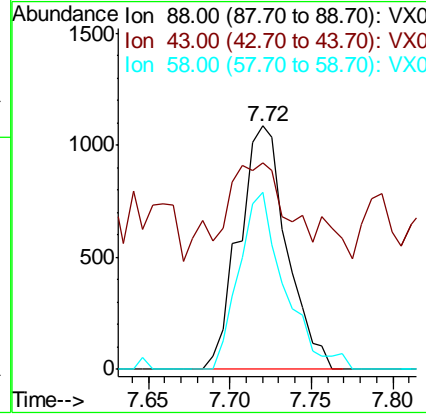
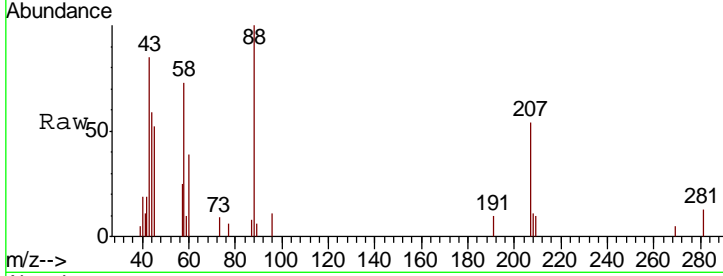




#49
 1,4-Dioxane
 Concen: 24.507 ug/l
 RT: 7.72 min Scan# 1088
 Delta R.T. 0.01 min
 Lab File: VX016212.D
 Acq: 14 May 2020 04:40

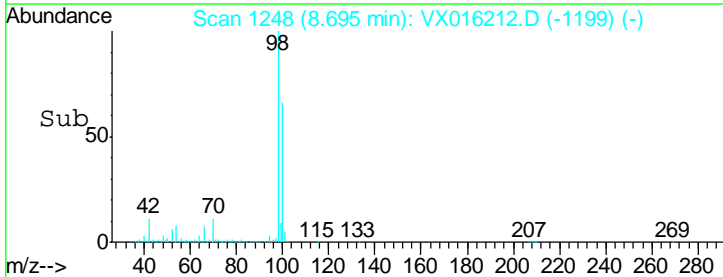
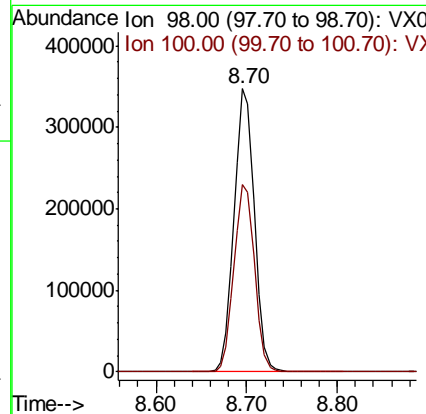
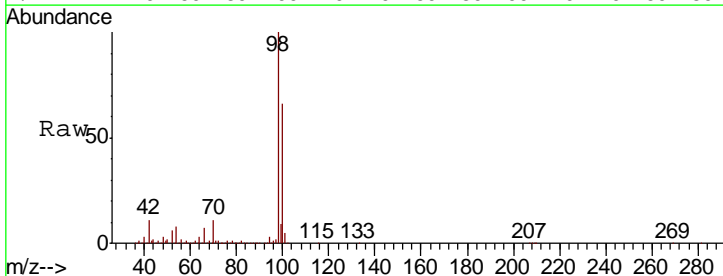
Instrument :
 MSVOA_X
ClientSampled :
 SS052MW731-200512

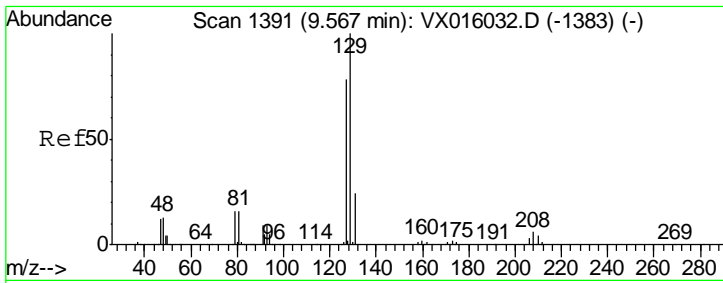
Tgt Ion	Resp	Lower	Upper
88	2215		
43	53.2	25.3	37.9#
58	69.4	55.9	83.9



#50
 Toluene-d8
 Concen: 50.775 ug/l
 RT: 8.70 min Scan# 1248
 Delta R.T. -0.00 min
 Lab File: VX016212.D
 Acq: 14 May 2020 04:40

Tgt Ion	Resp	Lower	Upper
98	541520		
100	67.2	53.7	80.5

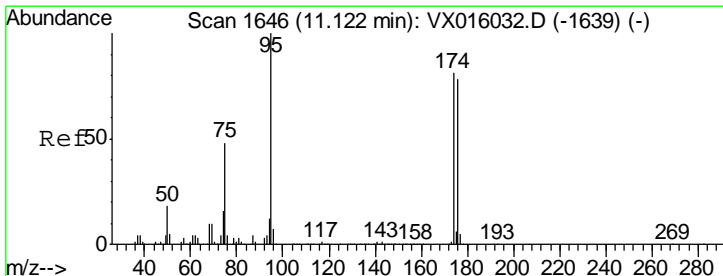
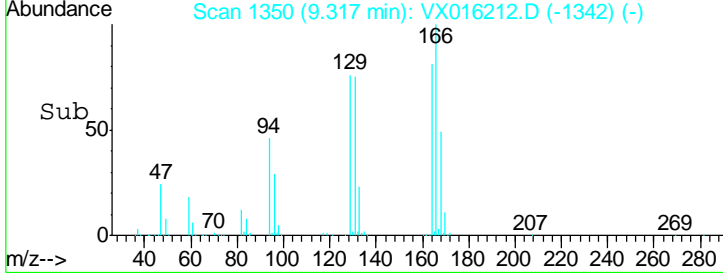
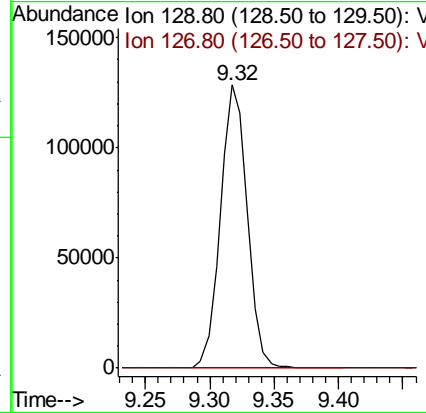
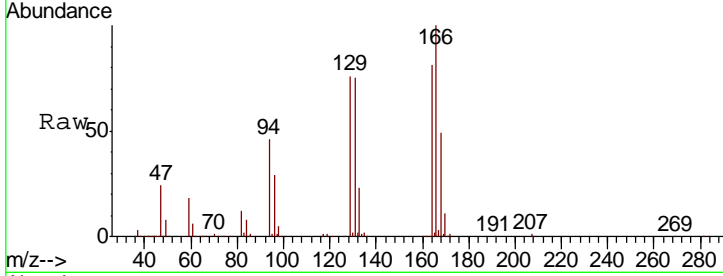




#60
 Dibromochloromethane
 Concen: 55.098 ug/l
 RT: 9.32 min Scan# 1350
 Delta R.T. -0.25 min
 Lab File: VX016212.D
 Acq: 14 May 2020 04:40

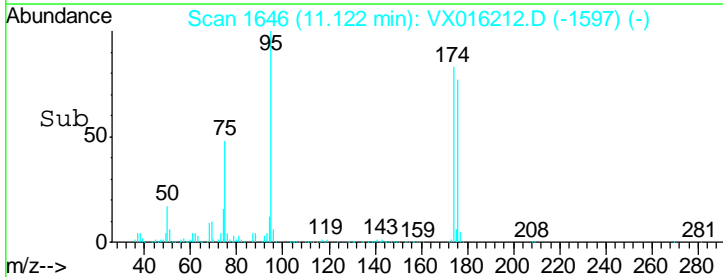
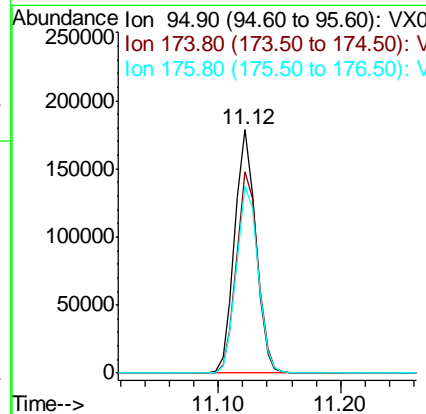
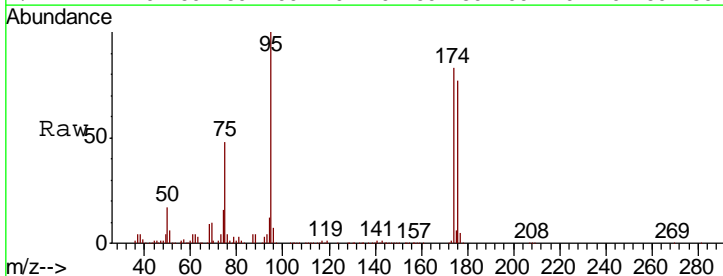
Instrument :
 MSVOA_X
ClientSampled :
 SS052MW731-200512

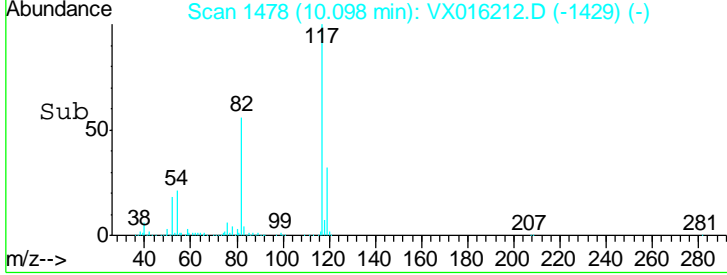
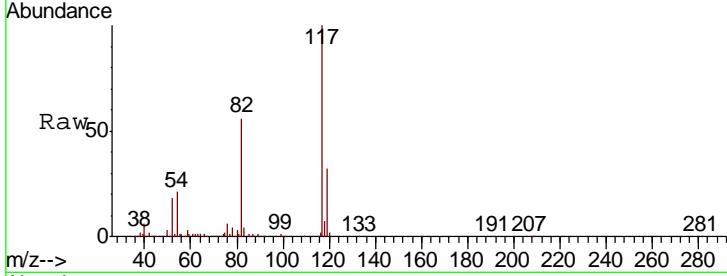
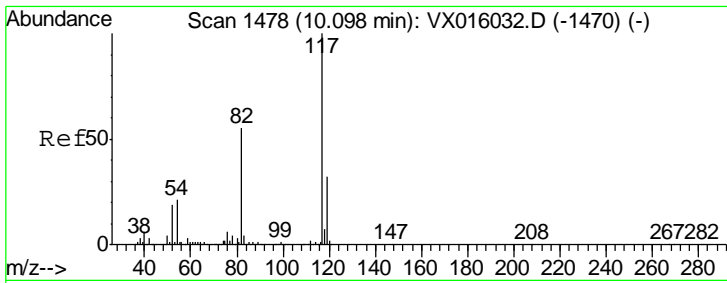
Tgt Ion: 129 Resp: 187263
 Ion Ratio Lower Upper
 129 100
 127 0.0 38.4 115.2#



#62
 4-Bromofluorobenzene
 Concen: 52.482 ug/l
 RT: 11.12 min Scan# 1646
 Delta R.T. -0.00 min
 Lab File: VX016212.D
 Acq: 14 May 2020 04:40

Tgt Ion: 95 Resp: 212897
 Ion Ratio Lower Upper
 95 100
 174 83.7 0.0 159.4
 176 78.9 0.0 157.6

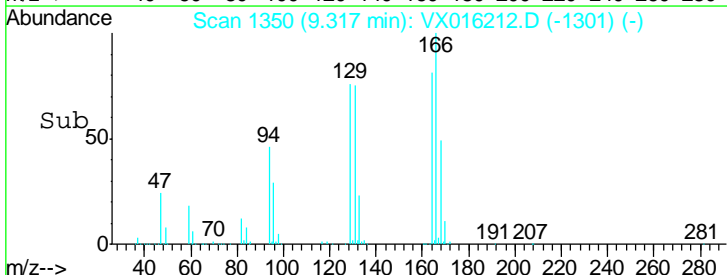
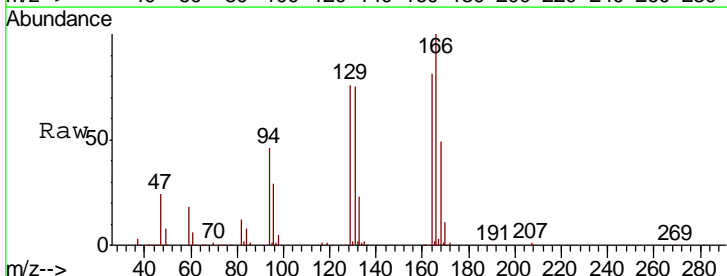
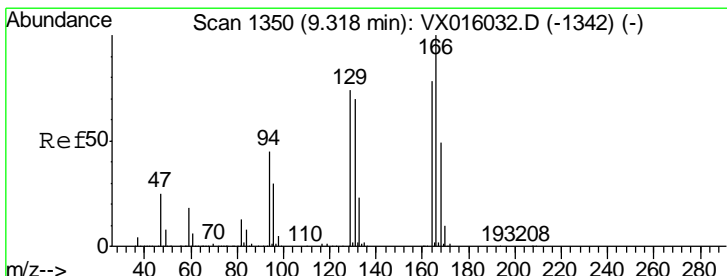
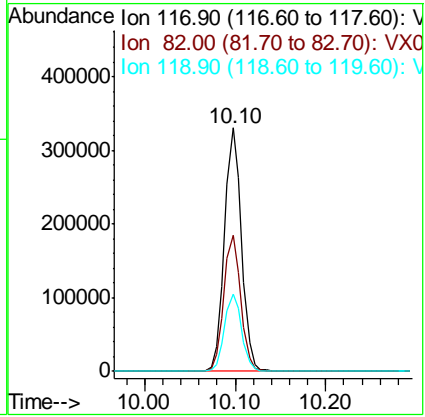




#63
 Chlorobenzene-d5
 Concen: 50.000 ug/l
 RT: 10.10 min Scan# 1478
 Delta R.T. -0.00 min
 Lab File: VX016212.D
 Acq: 14 May 2020 04:40

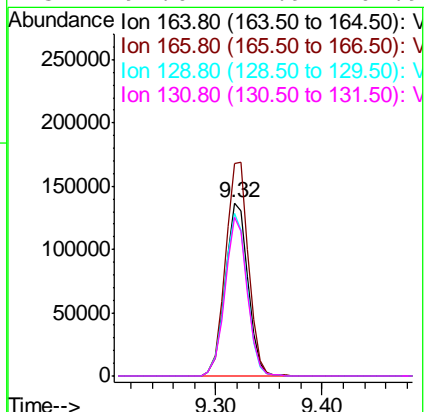
Instrument : MSVOA_X
 ClientSampled : SS052MW731-200512

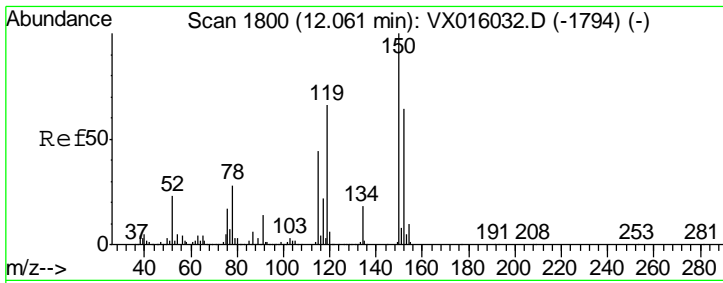
Tgt Ion	Resp	Lower	Upper
117	431546		
82	55.8	44.4	66.6
119	31.9	25.5	38.3



#64
 Tetrachloroethene
 Concen: 38.540 ug/l
 RT: 9.32 min Scan# 1350
 Delta R.T. -0.00 min
 Lab File: VX016212.D
 Acq: 14 May 2020 04:40

Tgt Ion	Resp	Lower	Upper
164	204179		
166	123.0	102.9	154.3
129	94.0	76.1	114.1
131	92.0	71.9	107.9

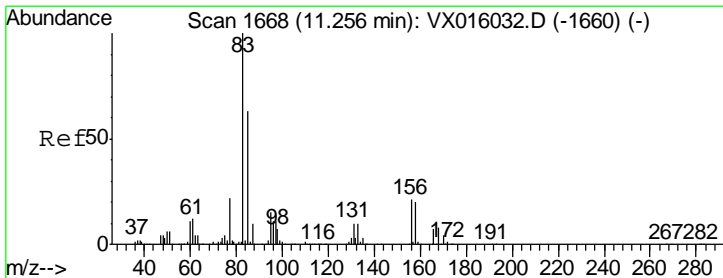
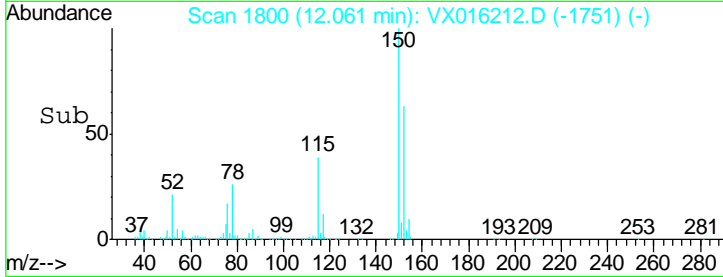
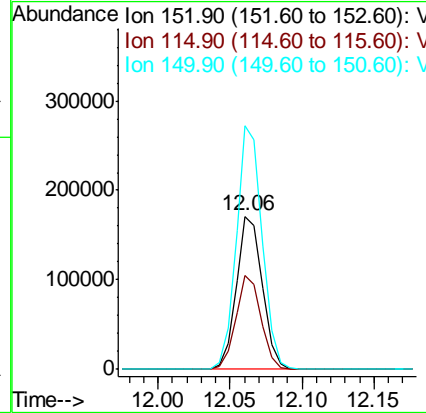
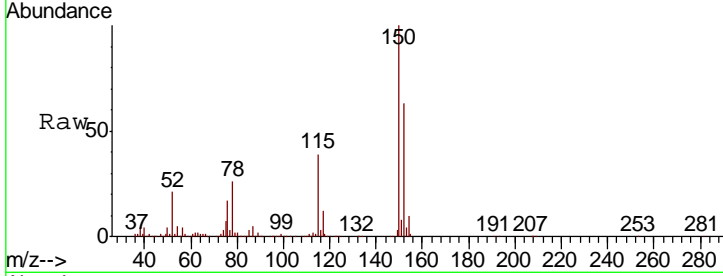




#72
 1,4-Dichlorobenzene-d4
 Concen: 50.000 ug/l
 RT: 12.06 min Scan# 1800
 Delta R.T. -0.00 min
 Lab File: VX016212.D
 Acq: 14 May 2020 04:40

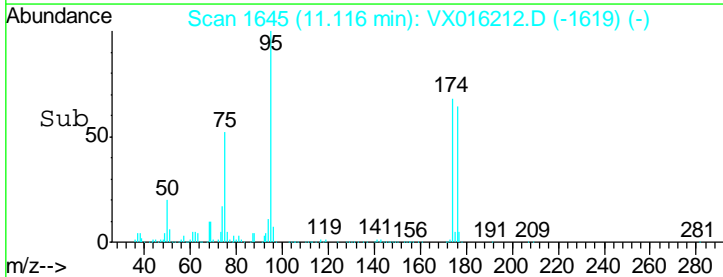
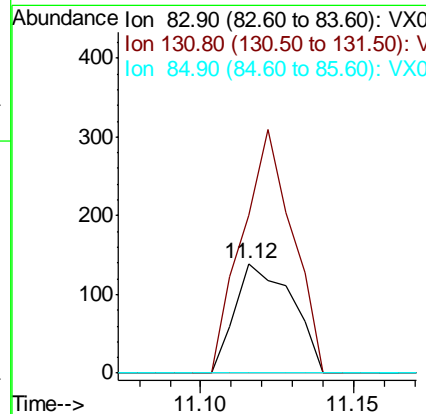
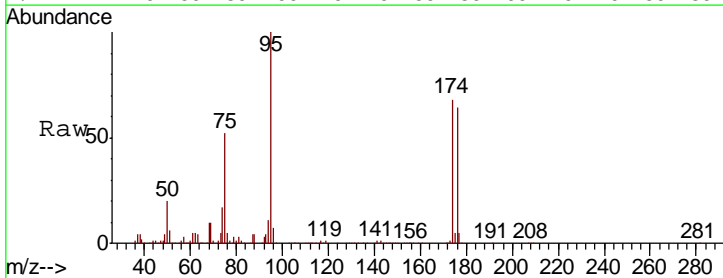
Instrument :
 MSVOA_X
 ClientSampled :
 SS052MW731-200512

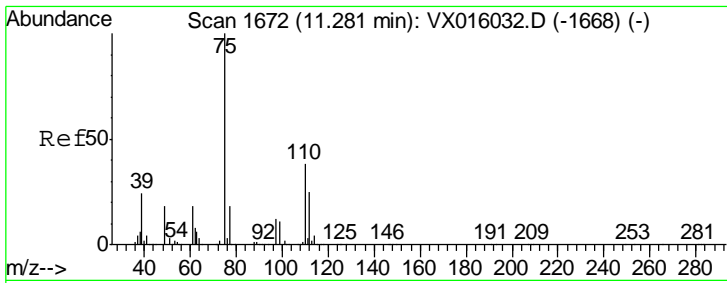
Tgt Ion	Resp	Lower	Upper
152	100		
115	59.6	41.3	124.1
150	157.5	0.0	352.2



#75
 1,1,2,2-Tetrachloroethane
 Concen: 2.110 ug/l
 RT: 11.12 min Scan# 1645
 Delta R.T. -0.14 min
 Lab File: VX016212.D
 Acq: 14 May 2020 04:40

Tgt Ion	Resp	Lower	Upper
83	100		
131	196.1	5.1	15.4#
85	0.0	32.0	96.0#

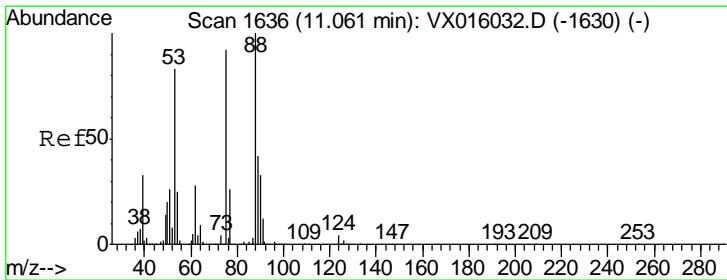
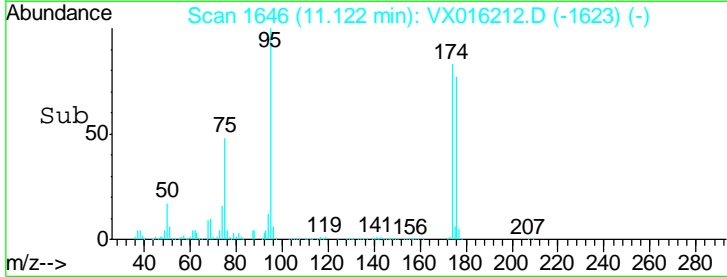
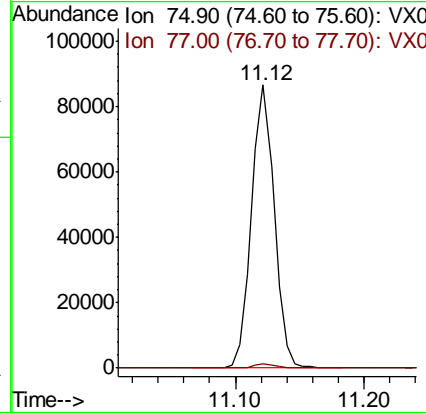
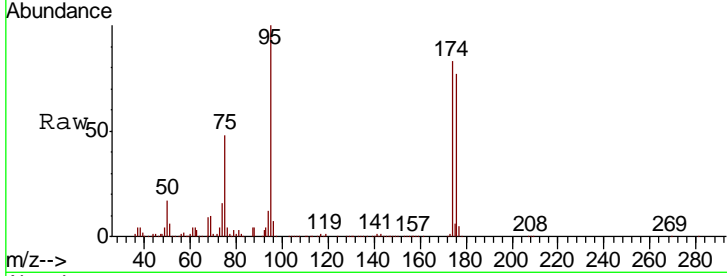




#76
 1,2,3-Trichloropropane
 Concen: 21.354 ug/l
 RT: 11.12 min Scan# 1646
 Delta R.T. -0.16 min
 Lab File: VX016212.D
 Acq: 14 May 2020 04:40

Instrument : MSVOA_X
 ClientSampled : SS052MW731-200512

Tgt Ion	Resp	Lower	Upper
75	100		
77	1.4	21.2	63.6#



#81
 trans-1,4-Dichloro-2-butene
 Concen: 50.888 ug/l
 RT: 11.12 min Scan# 1646
 Delta R.T. 0.06 min
 Lab File: VX016212.D
 Acq: 14 May 2020 04:40

Tgt Ion	Resp	Lower	Upper
75	100		
53	0.1	73.1	109.7#
89	0.0	36.7	55.1#

