

Data Path : Z:\VOASRV\HPCHEM1\MSVOA X\DATA\VX051320\  
 Data File : VX016181.D  
 Acq On : 13 May 2020 15:51  
 Operator : JC/SP  
 Sample : L2597-15  
 Misc : 5.0mL/MSVOA X/WATER  
 ALS Vial : 17 Sample Multiplier: 1

Instrument :  
 MSVOA\_X  
 ClientSampleId :  
 SS052MW721-200511

Integration Parameters: RTEINT.P  
 Integrator: RTE  
 Smoothing : ON Filtering: 5  
 Sampling : 1 Min Area: 3 % of largest Peak  
 Start Thrs: 0.2 Max Peaks: 100  
 Stop Thrs : 0 Peak Location: TOP

If leading or trailing edge < 100 prefer < Baseline drop else tangent >  
 Peak separation: 5

Method : Z:\VOASRV\HPCHEM1\MSVOA\_X\METHOD\82X050420W.M  
 Title : SW846 8260

Signal : TIC

peak #	R.T. min	first scan	max scan	last scan	PK TY	peak height	corr. area	corr. % max.	% of total
1	5.471	707	719	733	rBV2	156704	452359	30.08%	5.569%
2	5.629	733	745	760	rBV	280994	794180	52.81%	9.777%
3	6.031	799	811	824	rBV	176605	474208	31.53%	5.838%
4	6.830	931	942	952	rBV	444230	1052738	70.01%	12.960%
5	8.696	1239	1248	1265	rBV	958686	1503783	100.00%	18.513%
6	10.098	1471	1478	1495	rBV	1003254	1349921	89.77%	16.619%
7	11.122	1640	1646	1662	rBV	859443	1091755	72.60%	13.441%
8	12.061	1795	1800	1810	rBV	1134894	1403807	93.35%	17.282%

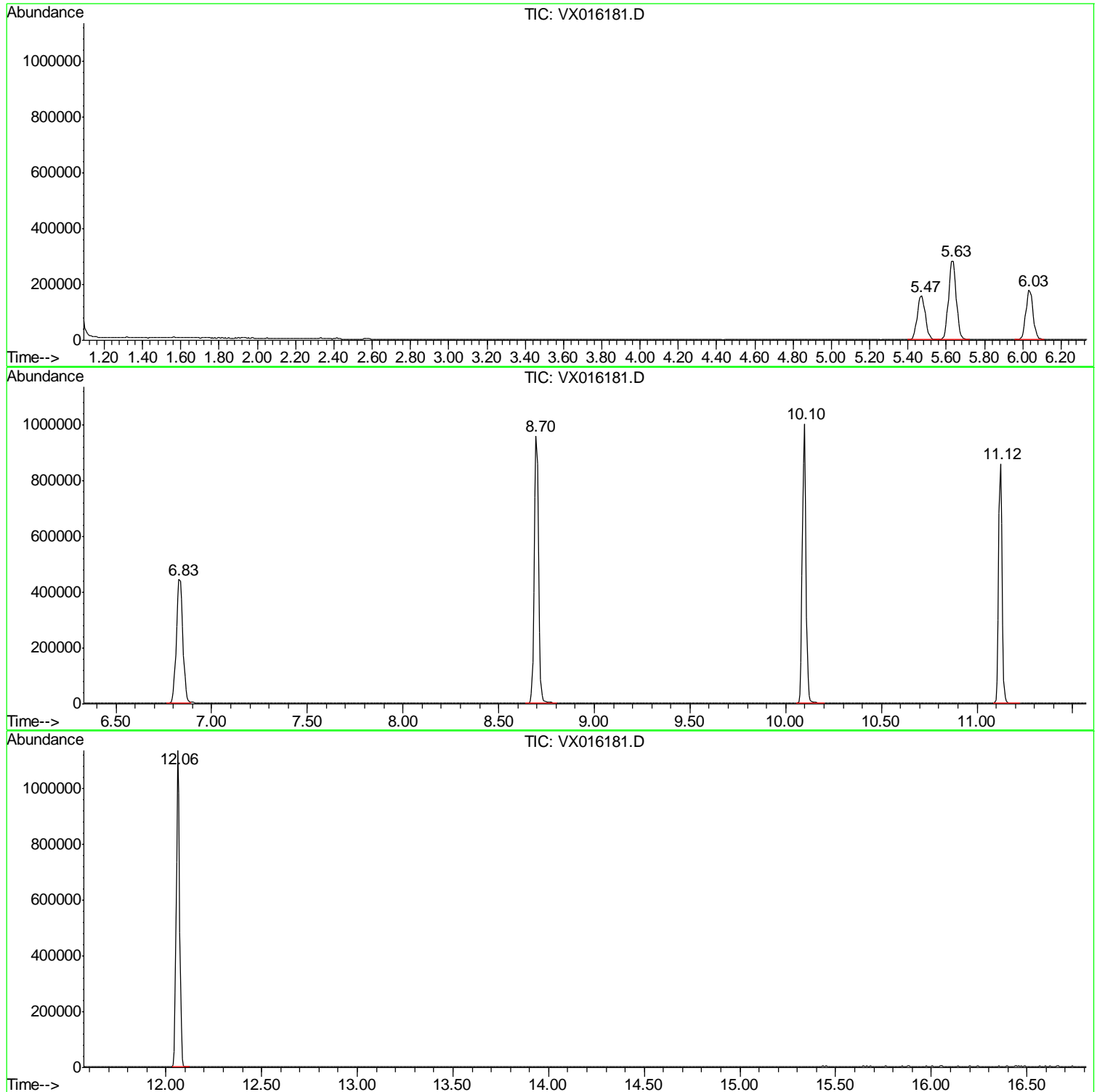
Sum of corrected areas: 8122751

Data Path : Z:\VOASRV\HPCHEM1\MSVOA X\DATA\VX051320\  
Data File : VX016181.D  
Acq On : 13 May 2020 15:51  
Operator : JC/SP  
Sample : L2597-15  
Misc : 5.0mL/MSVOA X/WATER  
ALS Vial : 17 Sample Multiplier: 1

Instrument :  
MSVOA\_X  
ClientSampled :  
SS052MW721-200511

Quant Method : Z:\VOASRV\HPCHEM1\MSVOA\_X\METHOD\82X050420W.M  
Quant Title : SW846 8260

TIC Library : C:\DATABASE\NIST11.L  
TIC Integration Parameters: LSCINT.P



Data Path : Z:\VOASRV\HPCHEM1\MSVOA\_X\DATA\VX051320\  
Data File : VX016181.D  
Acq On : 13 May 2020 15:51  
Operator : JC/SP  
Sample : L2597-15  
Misc : 5.0mL/MSVOA\_X/WATER  
ALS Vial : 17 Sample Multiplier: 1

Instrument :  
MSVOA\_X  
ClientSampleId :  
SS052MW721-200511

Quant Method : Z:\VOASRV\HPCHEM1\MSVOA\_X\METHOD\82X050420W.M  
Quant Title : SW846 8260

TIC Library : C:\DATABASE\NIST11.L  
TIC Integration Parameters: LSCINT.P

No Library Search Compounds Detected

\*\*\*\*\*

Data Path : Z:\VOASRV\HPCHEM1\MSVOA\_X\DATA\VX051320\  
Data File : VX016181.D  
Acq On : 13 May 2020 15:51  
Operator : JC/SP  
Sample : L2597-15  
Misc : 5.0mL/MSVOA\_X/WATER  
ALS Vial : 17 Sample Multiplier: 1

Instrument :  
MSVOA\_X  
ClientSampleId :  
SS052MW721-200511

Quant Method : Z:\VOASRV\HPCHEM1\MSVOA\_X\METHOD\82X050420W.M  
Quant Title : SW846 8260

TIC Library : C:\DATABASE\NIST11.L  
TIC Integration Parameters: LSCINT.P

TIC Top Hit name	RT	EstConc	Units	Response	--Internal Standard--			
					#	RT	Resp	Conc

---