

Data Path : Z:\voasrv\HPCHEM1\MSVOA_X\Data\VX051321\
 Data File : VX021939.D
 Acq On : 12 May 2021 20:52
 Operator : JC/MD
 Sample : VX0513WBL01
 Misc : 5.0mL/MSVOA_X/WATER
 ALS Vial : 11 Sample Multiplier: 1

Instrument :
 MSVOA_X
 ClientSampleId :

Quant Time: May 13 06:25:50 2021
 Quant Method : Z:\voasrv\HPCHEM1\MSVOA_X\Method\624X051321W.M
 Quant Title : METHOD 624 VOLATILE ORGANIC ANALYSIS
 QLast Update : Thu May 13 06:11:35 2021
 Response via : Initial Calibration

Compound	R.T.	QIon	Response	Conc	Units	Dev(Min)

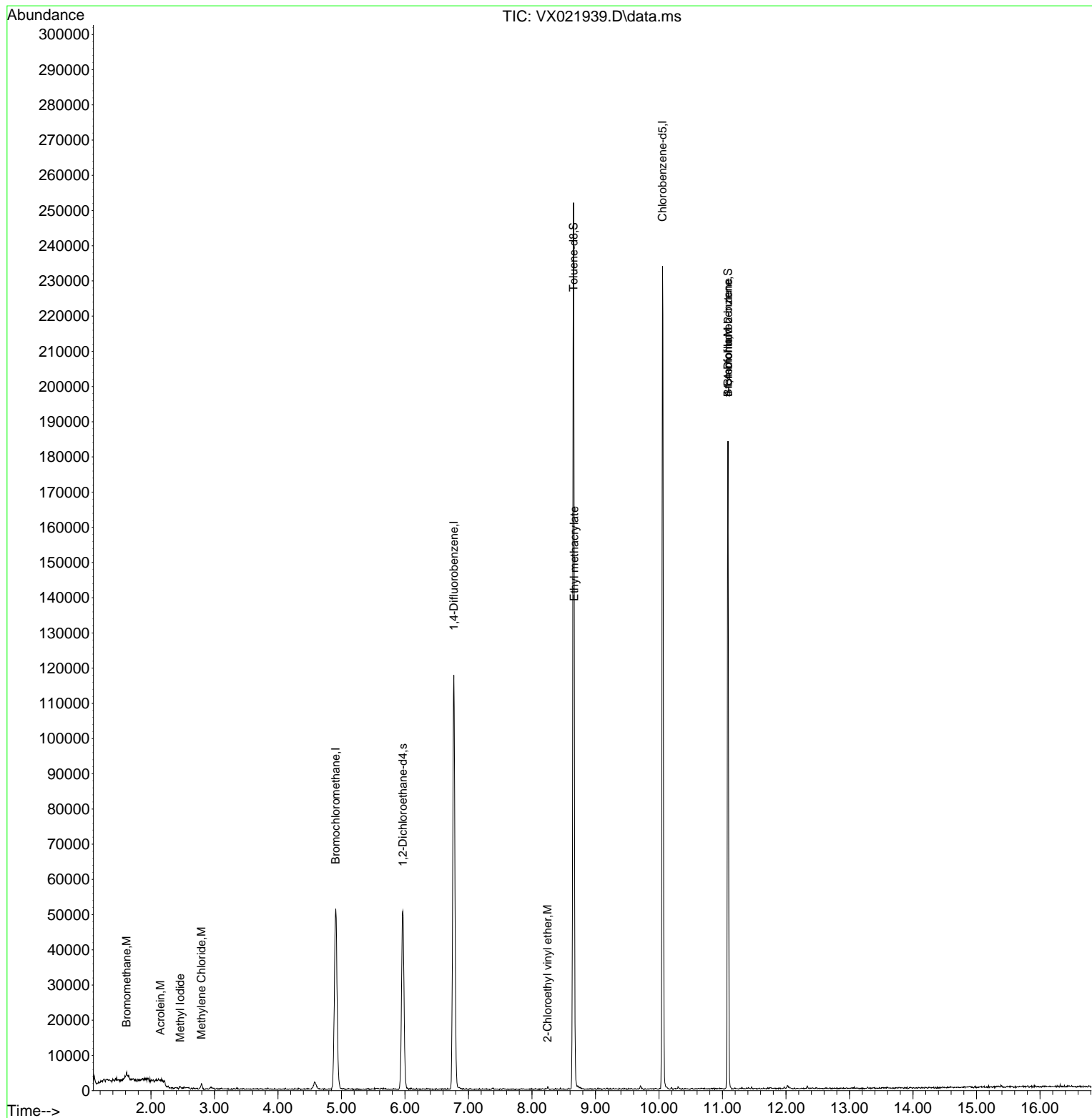
Internal Standards						
1) Bromochloromethane	4.910	128	20613	30.00	ug/l	0.00
28) 1,4-Difluorobenzene	6.769	114	121362	30.00	ug/l	0.00
57) Chlorobenzene-d5	10.055	117	105505	30.00	ug/l	0.00
System Monitoring Compounds						
27) 1,2-Dichloroethane-d4	5.964	65	47792	30.10	ug/l	0.00
Spiked Amount	30.000	Range	91 - 110	Recovery	=	100.33%
60) 4-Bromofluorobenzene	11.085	95	51310	29.30	ug/l	0.00
Spiked Amount	30.000	Range	63 - 112	Recovery	=	97.67%
63) Toluene-d8	8.653	98	146057	30.29	ug/l	0.00
Spiked Amount	30.000	Range	91 - 112	Recovery	=	100.97%
Target Compounds						
						Qvalue
5) Bromomethane	1.618	94	191	0.22	ug/l #	54
11) Methyl Iodide	2.459	142	584	0.48	ug/l #	80
13) Acrolein	2.148	56	83	0.32	ug/l #	1
18) Methylene Chloride	2.794	84	662	0.45	ug/l #	83
51) Ethyl methacrylate	8.665	69	469	0.20	ug/l #	64
55) 2-Chloroethyl vinyl ether	8.245	63	263	0.22	ug/l #	44
56) Bromoform	11.085	173	350	0.38	ug/l #	1
77) t-1,4-Dichloro-2-butene	11.085	75	25984	34.04	ug/l #	17

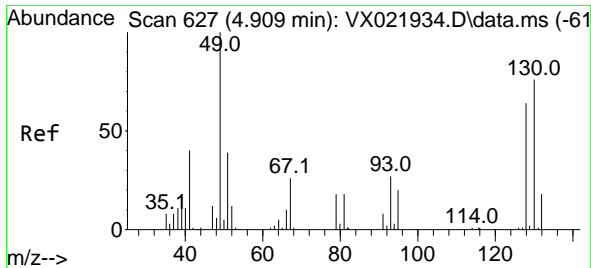
(#) = qualifier out of range (m) = manual integration (+) = signals summed

Data Path : Z:\voasrv\HPCHEM1\MSVOA_X\Data\VX051321\
 Data File : VX021939.D
 Acq On : 12 May 2021 20:52
 Operator : JC/MD
 Sample : VX0513WBL01
 Misc : 5.0mL/MSVOA_X/WATER
 ALS Vial : 11 Sample Multiplier: 1

Instrument :
 MSVOA_X
 ClientSampleId :

Quant Time: May 13 06:25:50 2021
 Quant Method : Z:\voasrv\HPCHEM1\MSVOA_X\Method\624X051321W.M
 Quant Title : METHOD 624 VOLATILE ORGANIC ANALYSIS
 QLast Update : Thu May 13 06:11:35 2021
 Response via : Initial Calibration

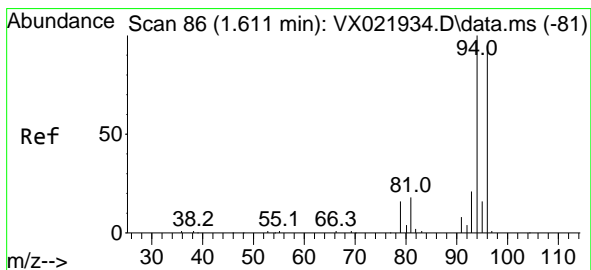
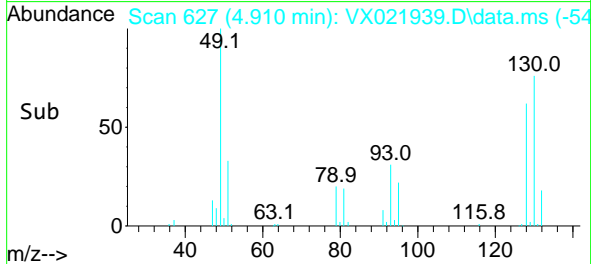
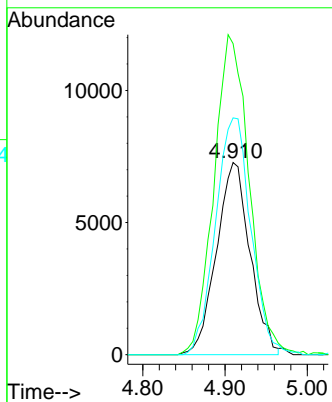
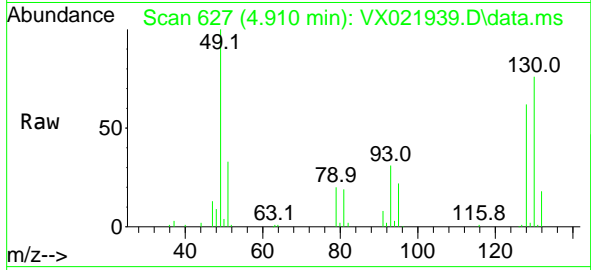




#1
 Bromochloromethane
 Concen: 30.00 ug/l
 RT: 4.910 min Scan# 627
 Delta R.T. 0.001 min
 Lab File: VX021939.D
 Acq: 12 May 2021 20:52

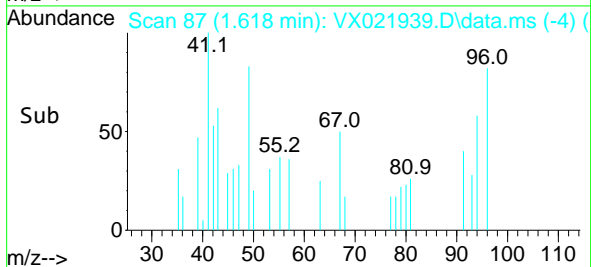
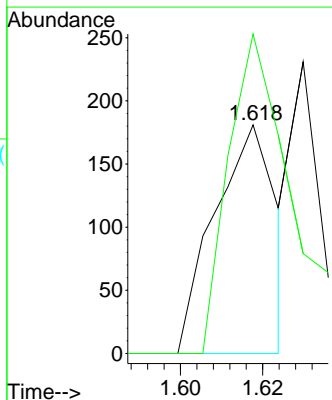
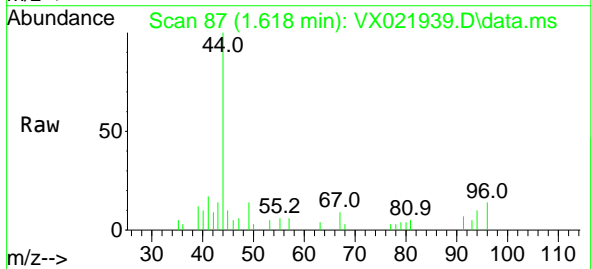
Instrument :
 MSVOA_X
 ClientSampled :

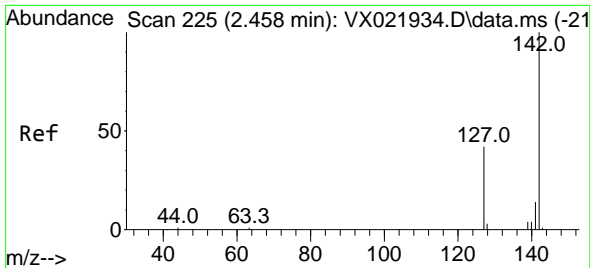
Tgt Ion	Resp	Lower	Upper
128	20613		
128	100		
49	174.3	0.0	442.5
130	130.6	0.0	323.3



#5
 Bromomethane
 Concen: 0.22 ug/l
 RT: 1.618 min Scan# 87
 Delta R.T. 0.007 min
 Lab File: VX021939.D
 Acq: 12 May 2021 20:52

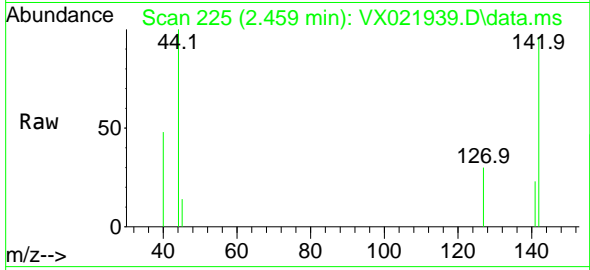
Tgt Ion	Resp	Lower	Upper
94	191		
94	100		
96	139.8	76.1	114.1#



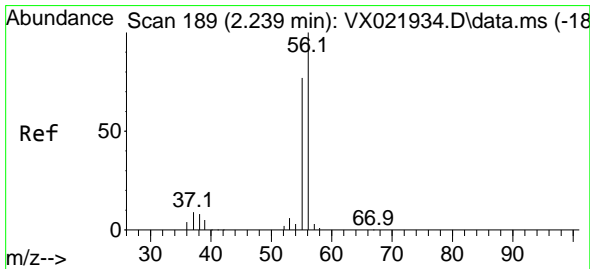
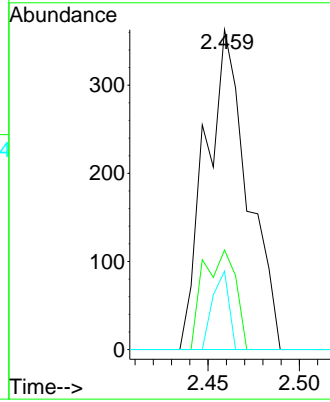
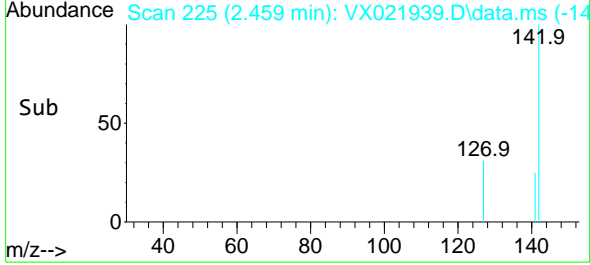


#11
 Methyl Iodide
 Concen: 0.48 ug/l
 RT: 2.459 min Scan# 225
 Delta R.T. 0.000 min
 Lab File: VX021939.D
 Acq: 12 May 2021 20:52

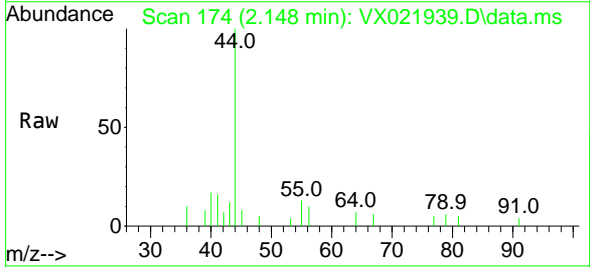
Instrument :
 MSVOA_X
 ClientSampled :



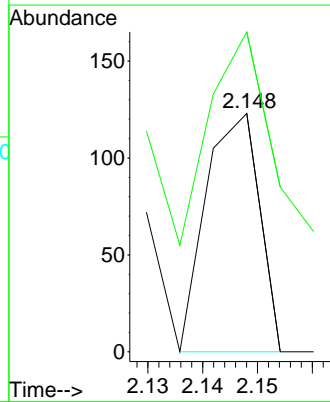
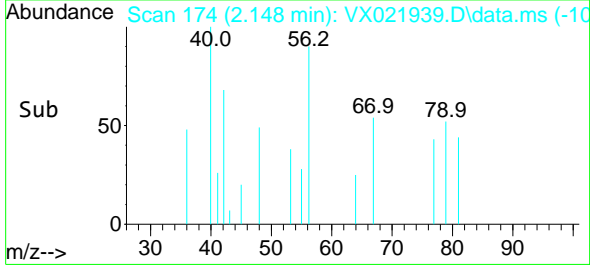
Tgt Ion:142 Resp: 584
 Ion Ratio Lower Upper
 142 100
 127 31.1 21.3 63.7
 141 24.5 7.2 21.6#

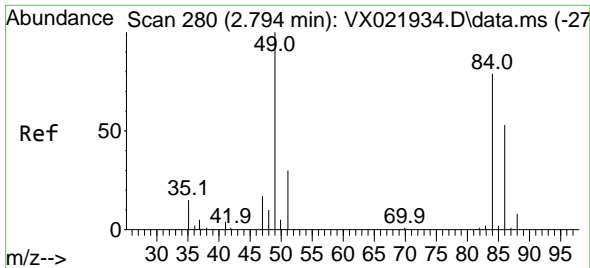


#13
 Acrolein
 Concen: 0.32 ug/l
 RT: 2.148 min Scan# 174
 Delta R.T. -0.091 min
 Lab File: VX021939.D
 Acq: 12 May 2021 20:52



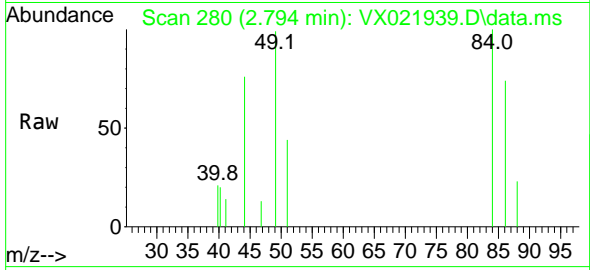
Tgt Ion: 56 Resp: 83
 Ion Ratio Lower Upper
 56 100
 55 196.4 57.6 86.4#





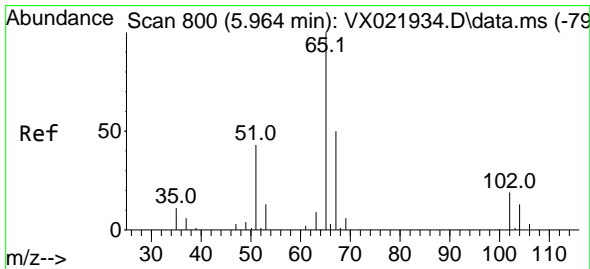
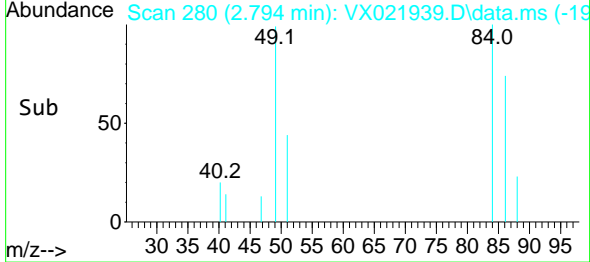
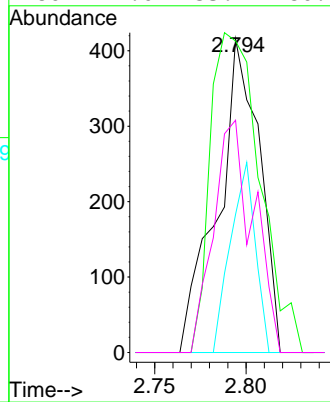
#18
 Methylene Chloride
 Concen: 0.45 ug/l
 RT: 2.794 min Scan# 280
 Delta R.T. 0.000 min
 Lab File: VX021939.D
 Acq: 12 May 2021 20:52

Instrument :
 MSVOA_X
 ClientSampled :

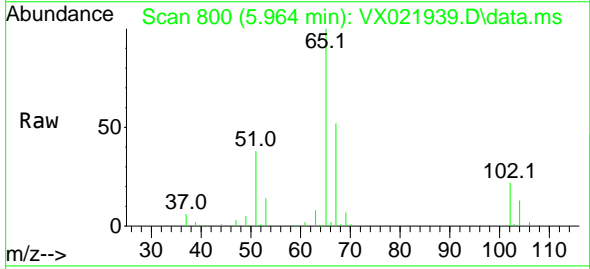


Tgt Ion: 84 Resp: 662

Ion	Ratio	Lower	Upper
84	100		
49	99.3	101.6	152.4#
51	44.0	30.5	45.7
86	74.0	53.4	80.2

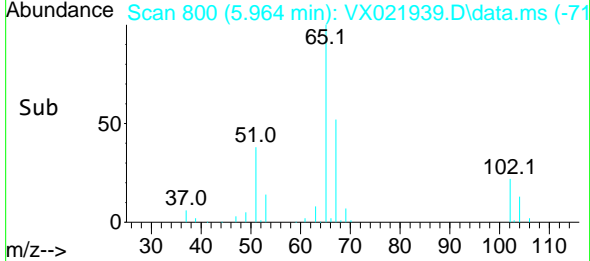
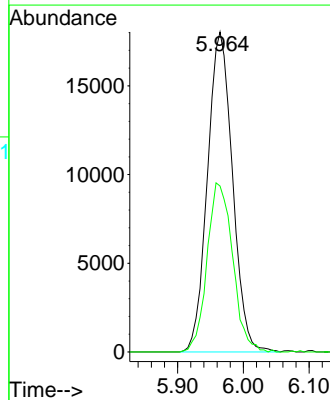


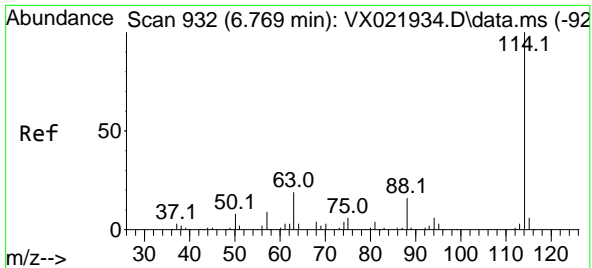
#27
 1,2-Dichloroethane-d4
 Concen: 30.10 ug/l
 RT: 5.964 min Scan# 800
 Delta R.T. 0.000 min
 Lab File: VX021939.D
 Acq: 12 May 2021 20:52



Tgt Ion: 65 Resp: 47792

Ion	Ratio	Lower	Upper
65	100		
67	54.0	41.5	62.3

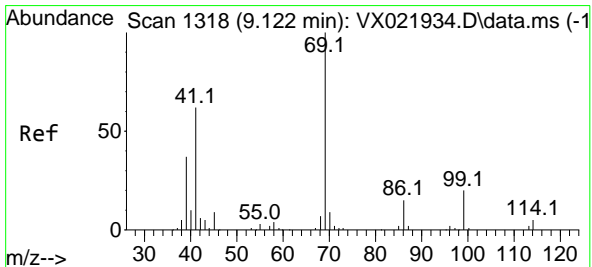
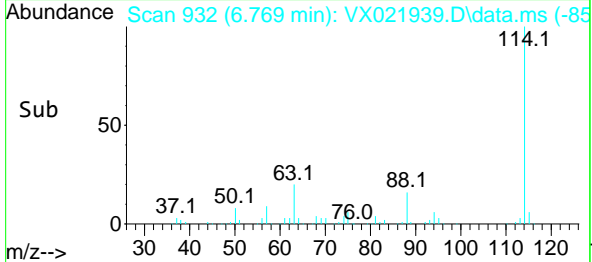
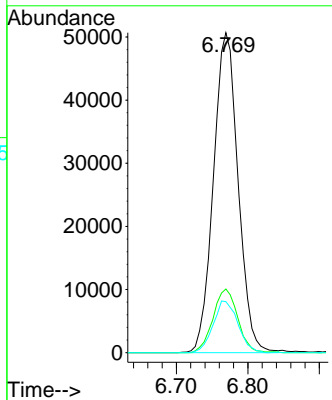
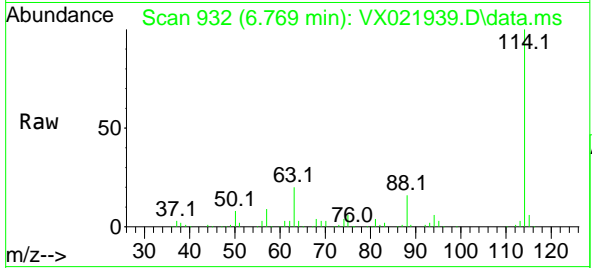




#28
 1,4-Difluorobenzene
 Concen: 30.00 ug/l
 RT: 6.769 min Scan# 932
 Delta R.T. 0.000 min
 Lab File: VX021939.D
 Acq: 12 May 2021 20:52

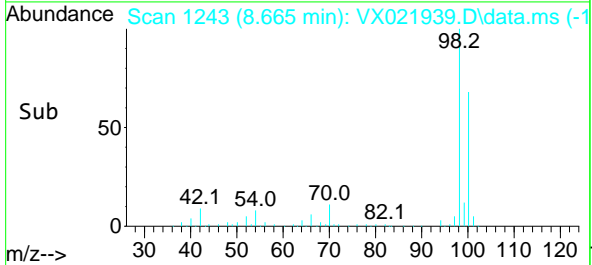
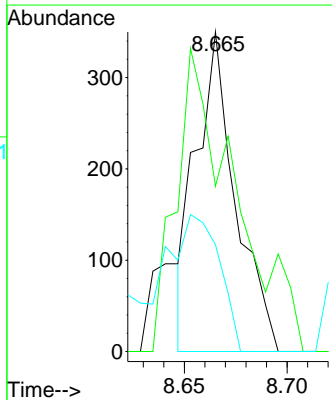
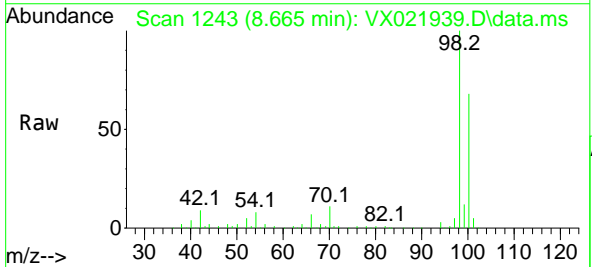
Instrument :
 MSVOA_X
 ClientSampled :

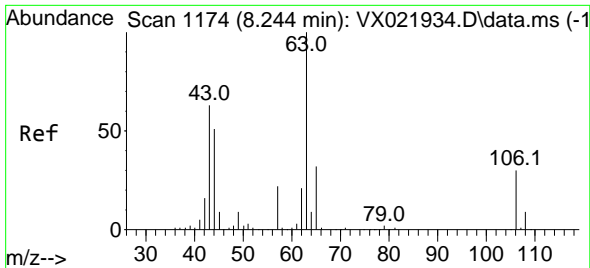
Tgt Ion	Resp	Lower	Upper
114	100		
63	19.9	16.6	25.0
88	16.3	13.1	19.7



#51
 Ethyl methacrylate
 Concen: 0.20 ug/l
 RT: 8.665 min Scan# 1243
 Delta R.T. -0.457 min
 Lab File: VX021939.D
 Acq: 12 May 2021 20:52

Tgt Ion	Resp	Lower	Upper
69	100		
41	21.1	31.1	93.5#
39	33.4	18.3	54.9

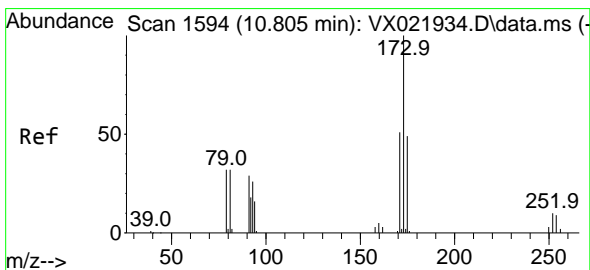
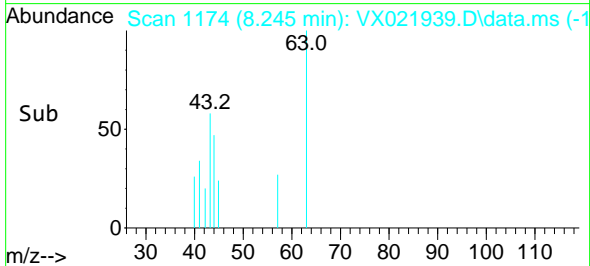
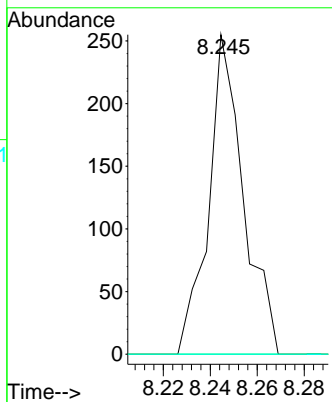
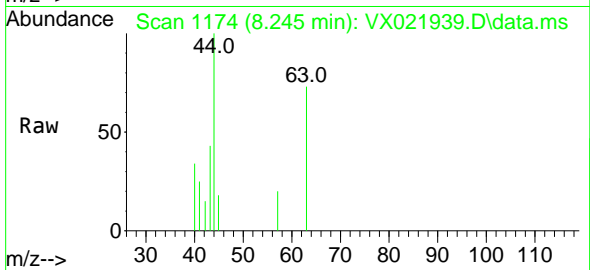




#55
 2-Chloroethyl vinyl ether
 Concen: 0.22 ug/l
 RT: 8.245 min Scan# 1174
 Delta R.T. 0.001 min
 Lab File: VX021939.D
 Acq: 12 May 2021 20:52

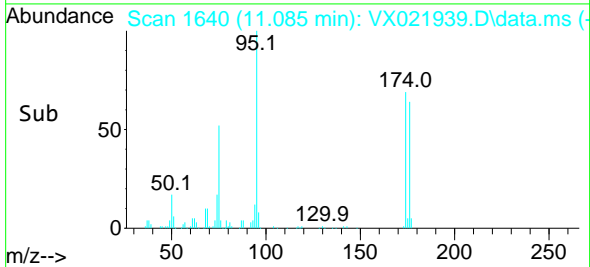
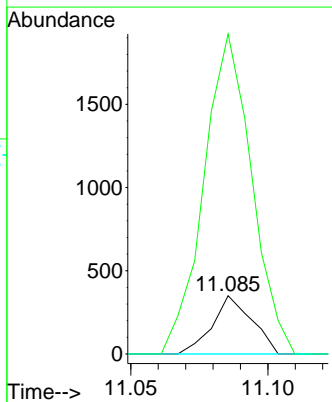
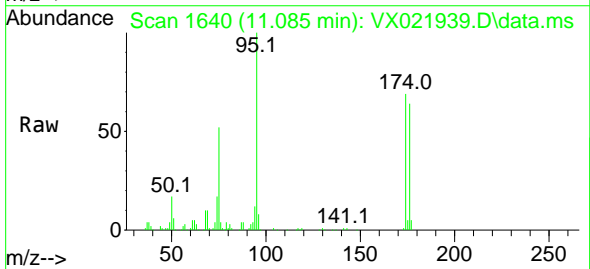
Instrument :
 MSVOA_X
 ClientSampled :

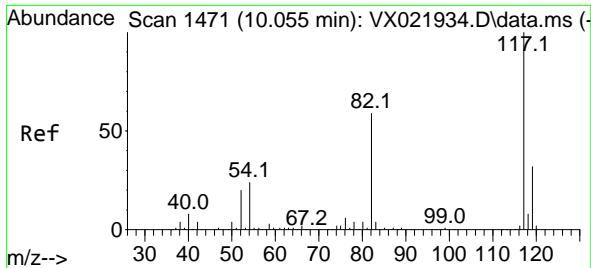
Tgt Ion	Resp	Lower	Upper
63	100		
65	0.0	25.6	38.4#
106	0.0	23.2	34.8#



#56
 Bromoform
 Concen: 0.38 ug/l
 RT: 11.085 min Scan# 1640
 Delta R.T. 0.281 min
 Lab File: VX021939.D
 Acq: 12 May 2021 20:52

Tgt Ion	Resp	Lower	Upper
173	100		
175	668.3	39.4	59.2#
254	0.0	8.0	12.0#

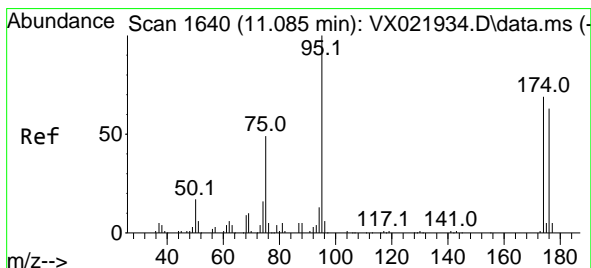
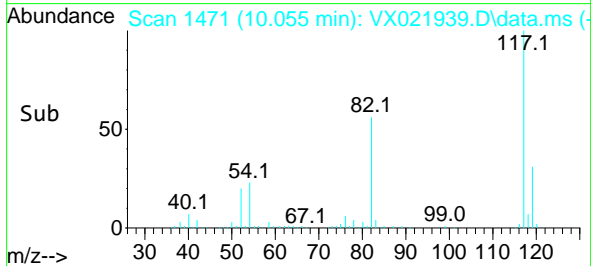
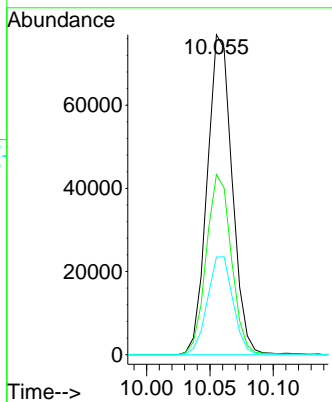
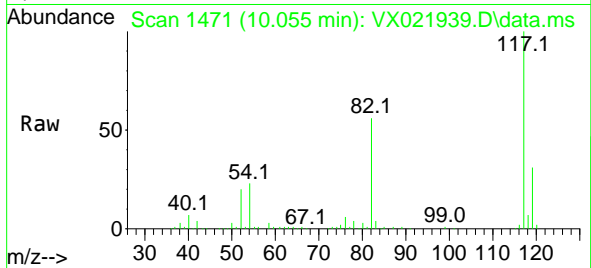




#57
 Chlorobenzene-d5
 Concen: 30.00 ug/l
 RT: 10.055 min Scan# 1471
 Delta R.T. 0.000 min
 Lab File: VX021939.D
 Acq: 12 May 2021 20:52

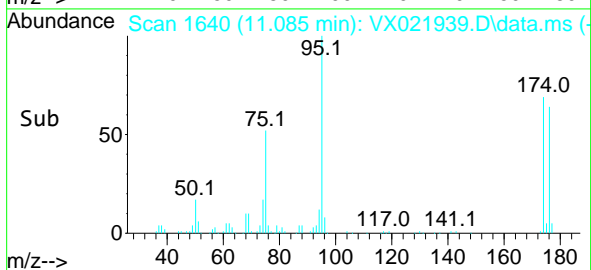
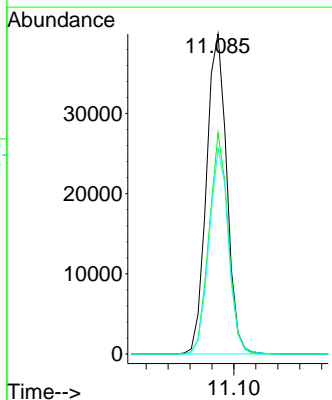
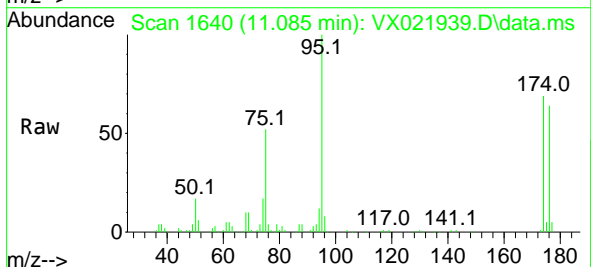
Instrument :
 MSVOA_X
 ClientSampled :

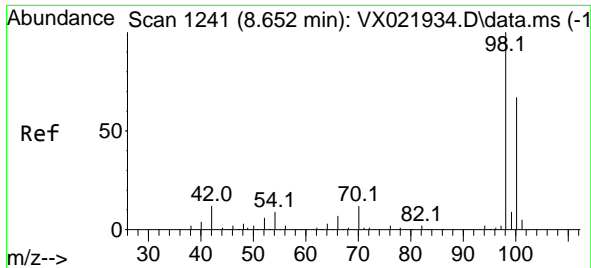
Tgt Ion	Resp	Lower	Upper
117	105505		
82	56.9	44.9	67.3
119	31.5	25.0	37.6



#60
 4-Bromofluorobenzene
 Concen: 29.30 ug/l
 RT: 11.085 min Scan# 1640
 Delta R.T. 0.000 min
 Lab File: VX021939.D
 Acq: 12 May 2021 20:52

Tgt Ion	Resp	Lower	Upper
95	51310		
174	65.2	52.2	78.2
176	61.9	49.3	73.9

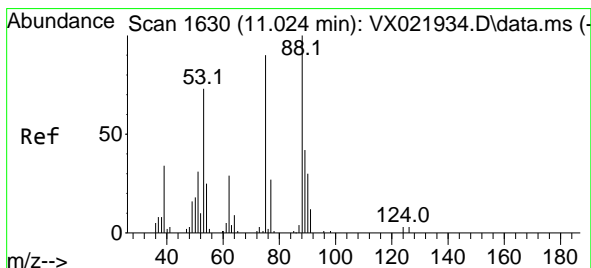
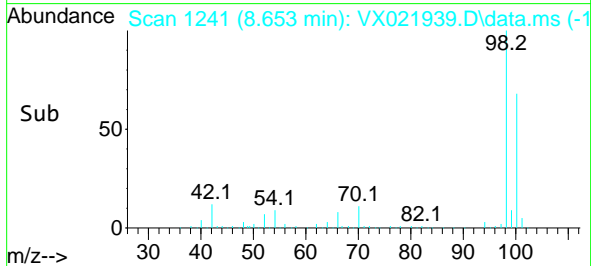
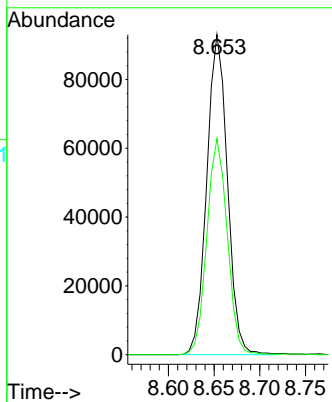
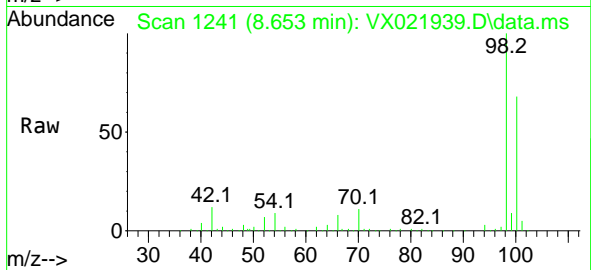




#63
 Toluene-d8
 Concen: 30.29 ug/l
 RT: 8.653 min Scan# 1241
 Delta R.T. 0.001 min
 Lab File: VX021939.D
 Acq: 12 May 2021 20:52

Instrument :
 MSVOA_X
 ClientSampled :

Tgt Ion: 98 Resp: 146057
 Ion Ratio Lower Upper
 98 100
 100 66.6 52.6 78.8



#77
 t-1,4-Dichloro-2-butene
 Concen: 34.04 ug/l
 RT: 11.085 min Scan# 1640
 Delta R.T. 0.061 min
 Lab File: VX021939.D
 Acq: 12 May 2021 20:52

Tgt Ion: 75 Resp: 25984
 Ion Ratio Lower Upper
 75 100
 53 0.0 40.2 120.6#
 89 0.0 23.4 70.0#

