

Data Path : Z:\voasrv\HPCHEM1\MSVOA\_X\Data\VX051321\  
 Data File : VX021970.D  
 Acq On : 13 May 2021 16:20  
 Operator : JC/MD  
 Sample : M2383-11  
 Misc : 5.0mL/MSVOA\_X/WATER  
 ALS Vial : 42 Sample Multiplier: 1

Instrument :  
 MSVOA\_X  
 ClientSampleId :  
 KTW-03

Quant Time: May 14 04:37:43 2021  
 Quant Method : Z:\voasrv\HPCHEM1\MSVOA\_X\Method\82X050721W.M  
 Quant Title : SW846 8260  
 QLast Update : Sat May 08 05:38:18 2021  
 Response via : Initial Calibration

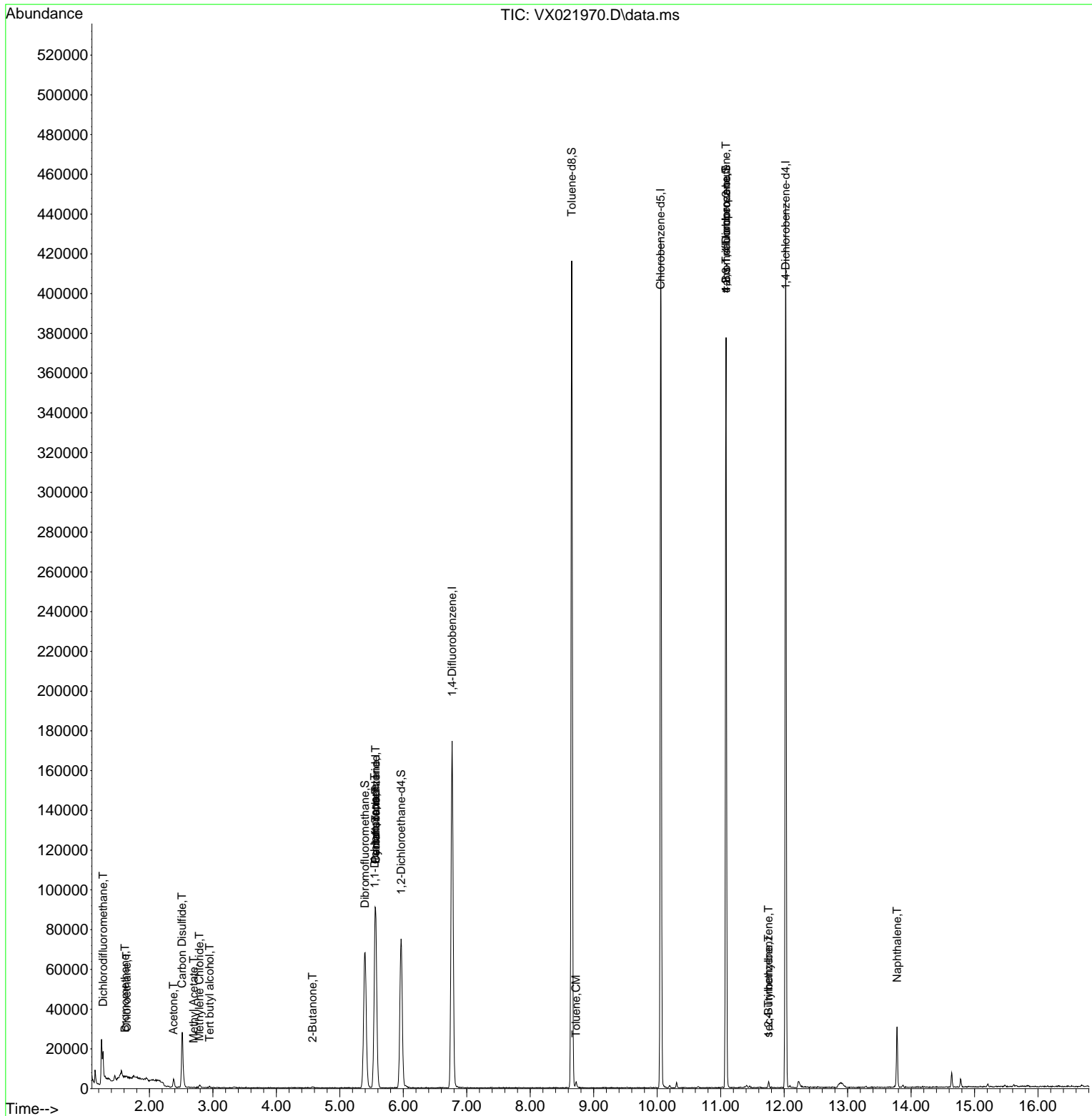
Compound	R.T.	QIon	Response	Conc	Units	Dev(Min)
-----						
Internal Standards						
1) Pentafluorobenzene	5.562	168	82109	50.00	ug/l	0.00
34) 1,4-Difluorobenzene	6.769	114	176989	50.00	ug/l	0.00
63) Chlorobenzene-d5	10.055	117	186680	50.00	ug/l	0.00
72) 1,4-Dichlorobenzene-d4	12.024	152	84304	50.00	ug/l	0.00
System Monitoring Compounds						
33) 1,2-Dichloroethane-d4	5.964	65	68555	50.73	ug/l	0.00
Spiked Amount	50.000	Range	78 - 117	Recovery	=	101.46%
35) Dibromofluoromethane	5.397	113	60654	50.01	ug/l	0.00
Spiked Amount	50.000	Range	75 - 124	Recovery	=	100.02%
50) Toluene-d8	8.653	98	236627	51.12	ug/l	0.00
Spiked Amount	50.000	Range	92 - 112	Recovery	=	102.24%
62) 4-Bromofluorobenzene	11.085	95	104400	57.15	ug/l	0.00
Spiked Amount	50.000	Range	83 - 123	Recovery	=	114.30%
Target Compounds						
						Qvalue
2) Dichlorodifluoromethane	1.270	85	383	0.35	ug/l	96
5) Bromomethane	1.618	94	237	0.43	ug/l #	46
6) Chloroethane	1.642	64	448	0.57	ug/l #	45
11) Tert butyl alcohol	2.947	59	324	0.90	ug/l #	73
13) Acrolein	2.252	56	142	Below Cal	#	70
16) Acetone	2.380	43	4270	7.05	ug/l	99
17) Carbon Disulfide	2.514	76	33105	10.69	ug/l	98
18) Methyl Acetate	2.697	43	428	0.25	ug/l #	47
20) Methylene Chloride	2.788	84	542	0.58	ug/l #	87
25) 2-Butanone	4.568	43	613	0.59	ug/l #	45
31) Cyclohexane	5.562	56	2105	1.18	ug/l #	1
36) 1,1-Dichloropropene	5.550	75	7265	3.87	ug/l #	47
38) Carbon Tetrachloride	5.562	117	9079	4.84	ug/l #	14
52) Toluene	8.720	92	1116	0.31	ug/l	80
76) 1,2,3-Trichloropropane	11.085	75	52565	21.93	ug/l #	39
81) trans-1,4-Dichloro-2-b...	11.085	75	52565	50.87	ug/l #	12
84) 1,2,4-Trimethylbenzene	11.756	105	1653	0.25	ug/l	94
85) sec-Butylbenzene	11.756	105	1653	0.21	ug/l #	57
95) Naphthalene	13.780	128	20021	2.65	ug/l	96
-----						

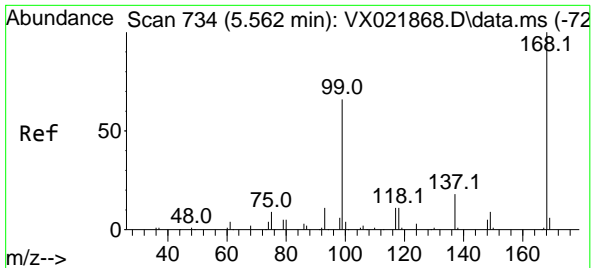
(#) = qualifier out of range (m) = manual integration (+) = signals summed

Data Path : Z:\voasrv\HPCHEM1\MSVOA\_X\Data\VX051321\  
 Data File : VX021970.D  
 Acq On : 13 May 2021 16:20  
 Operator : JC/MD  
 Sample : M2383-11  
 Misc : 5.0mL/MSVOA\_X/WATER  
 ALS Vial : 42 Sample Multiplier: 1

Instrument :  
 MSVOA\_X  
 Client Sampled :  
 KTW-03

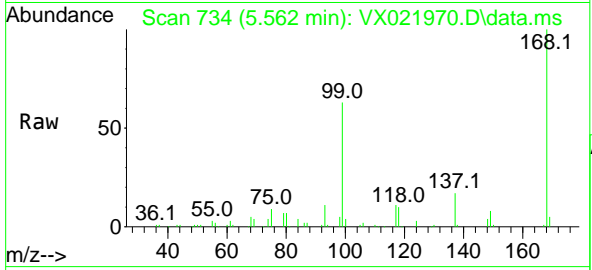
Quant Time: May 14 04:37:43 2021  
 Quant Method : Z:\voasrv\HPCHEM1\MSVOA\_X\Method\82X050721W.M  
 Quant Title : SW846 8260  
 QLast Update : Sat May 08 05:38:18 2021  
 Response via : Initial Calibration



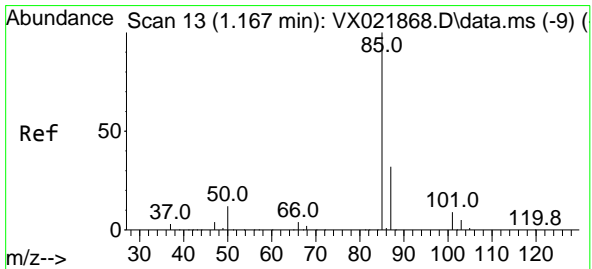
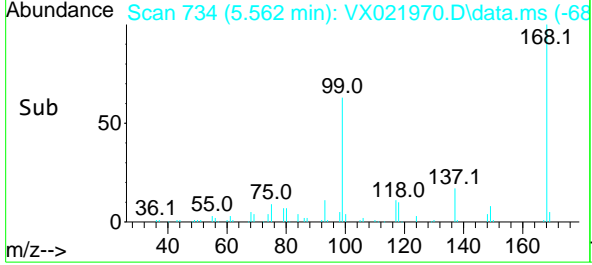
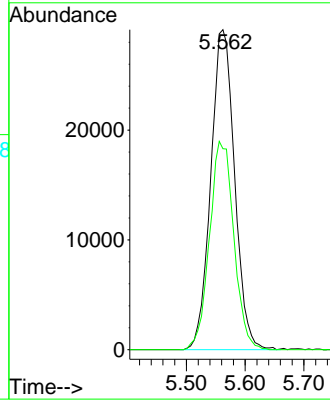


#1  
 Pentafluorobenzene  
 Concen: 50.00 ug/l  
 RT: 5.562 min Scan# 734  
 Delta R.T. 0.000 min  
 Lab File: VX021970.D  
 Acq: 13 May 2021 16:20

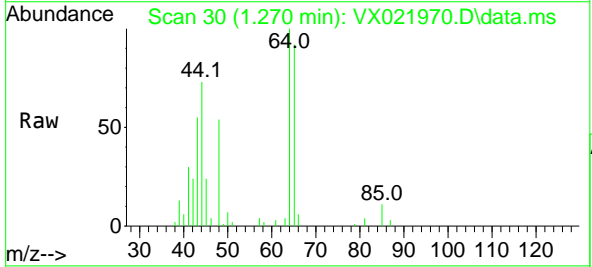
Instrument :  
 MSVOA\_X  
 ClientSampled :  
 KTW-03



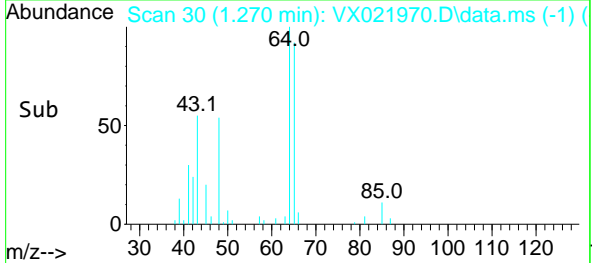
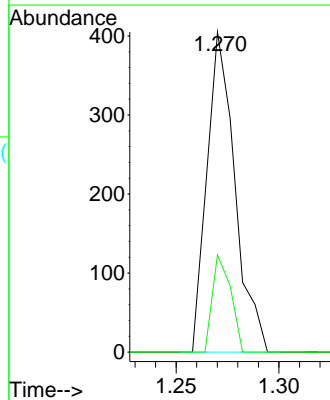
Tgt Ion:168 Resp: 82109  
 Ion Ratio Lower Upper  
 168 100  
 99 62.8 45.8 68.6

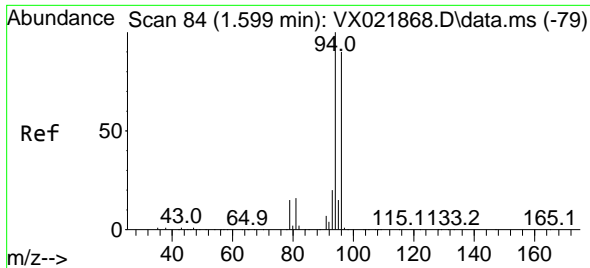


#2  
 Dichlorodifluoromethane  
 Concen: 0.35 ug/l  
 RT: 1.270 min Scan# 30  
 Delta R.T. 0.103 min  
 Lab File: VX021970.D  
 Acq: 13 May 2021 16:20



Tgt Ion: 85 Resp: 383  
 Ion Ratio Lower Upper  
 85 100  
 87 30.4 16.4 49.2

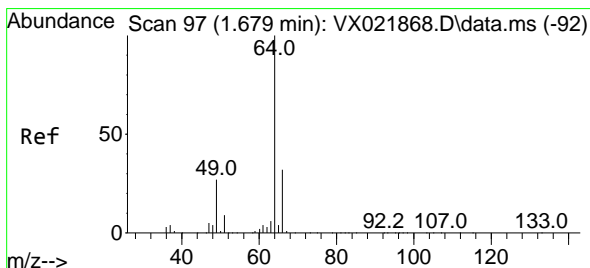
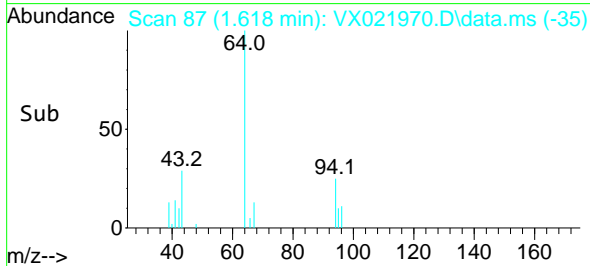
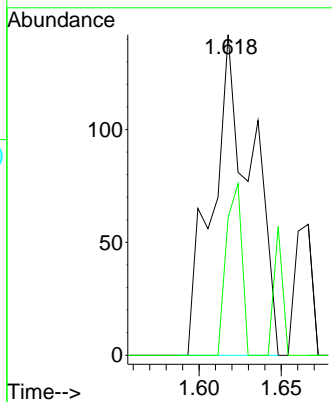
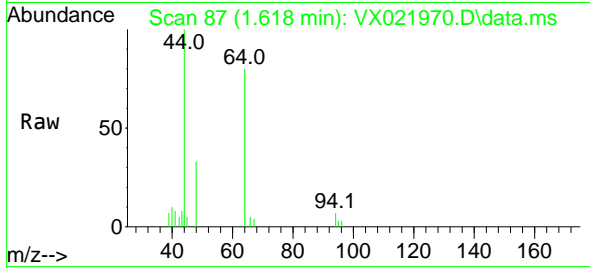




#5  
 Bromomethane  
 Concen: 0.43 ug/l  
 RT: 1.618 min Scan# 87  
 Delta R.T. 0.019 min  
 Lab File: VX021970.D  
 Acq: 13 May 2021 16:20

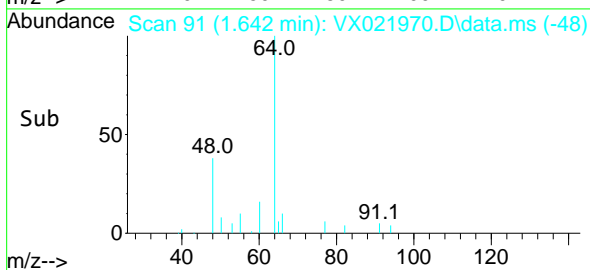
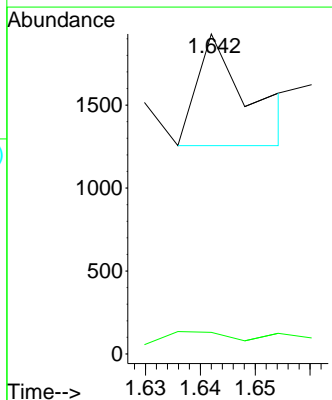
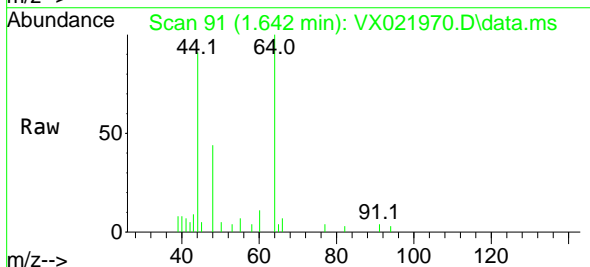
Instrument :  
 MSVOA\_X  
 ClientSampled :  
 KTW-03

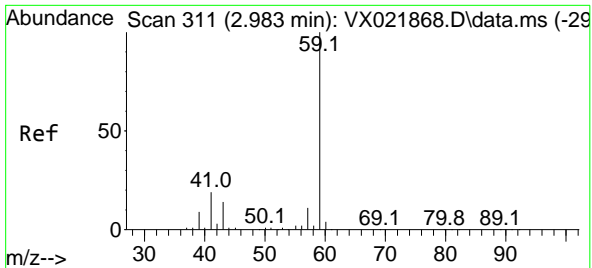
Tgt Ion: 94 Resp: 237  
 Ion Ratio Lower Upper  
 94 100  
 96 43.0 76.4 114.6#



#6  
 Chloroethane  
 Concen: 0.57 ug/l  
 RT: 1.642 min Scan# 91  
 Delta R.T. -0.037 min  
 Lab File: VX021970.D  
 Acq: 13 May 2021 16:20

Tgt Ion: 64 Resp: 448  
 Ion Ratio Lower Upper  
 64 100  
 66 0.9 25.4 38.0#

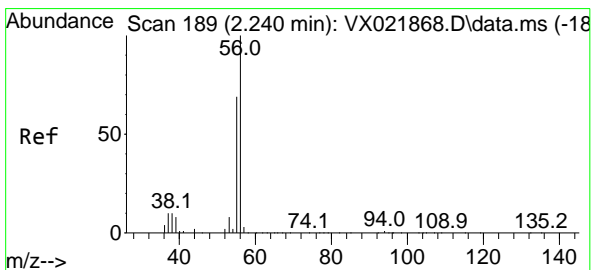
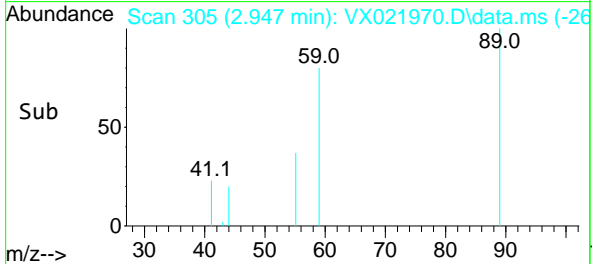
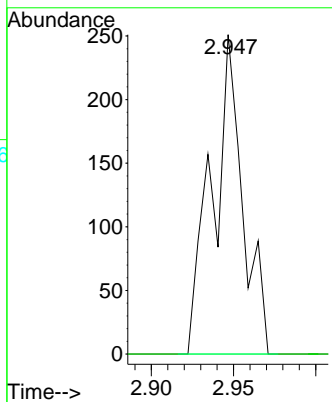
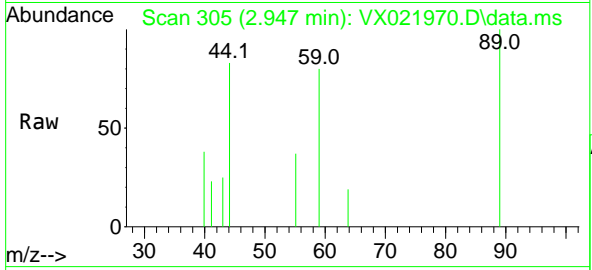




#11  
 Tert butyl alcohol  
 Concen: 0.90 ug/l  
 RT: 2.947 min Scan# 305  
 Delta R.T. -0.036 min  
 Lab File: VX021970.D  
 Acq: 13 May 2021 16:20

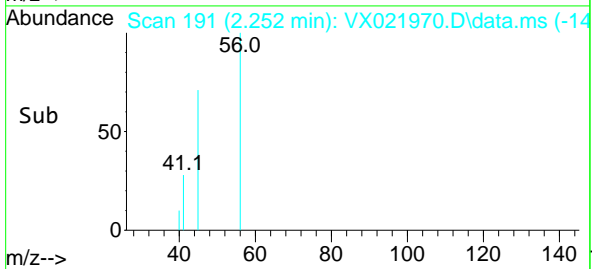
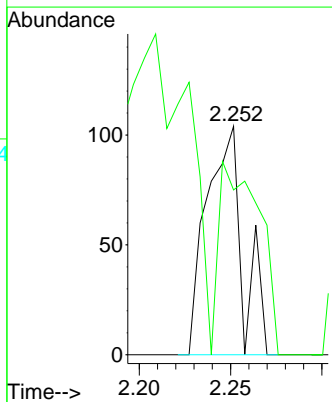
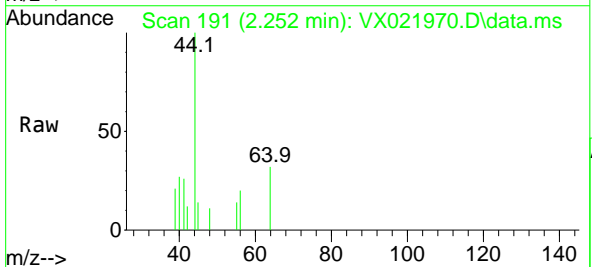
Instrument : MSVOA\_X  
 ClientSampled : KTW-03

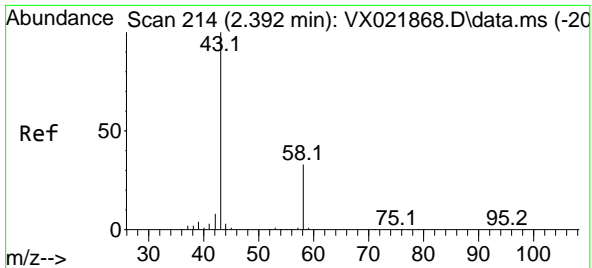
Tgt Ion: 59 Resp: 324  
 Ion Ratio Lower Upper  
 59 100  
 57 0.0 7.8 11.8#



#13  
 Acrolein  
 Concen: Below Cal  
 RT: 2.252 min Scan# 191  
 Delta R.T. 0.012 min  
 Lab File: VX021970.D  
 Acq: 13 May 2021 16:20

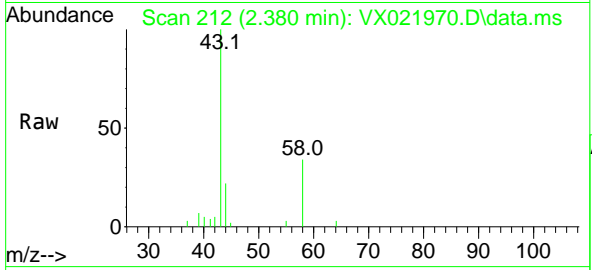
Tgt Ion: 56 Resp: 142  
 Ion Ratio Lower Upper  
 56 100  
 55 95.1 56.4 84.6#



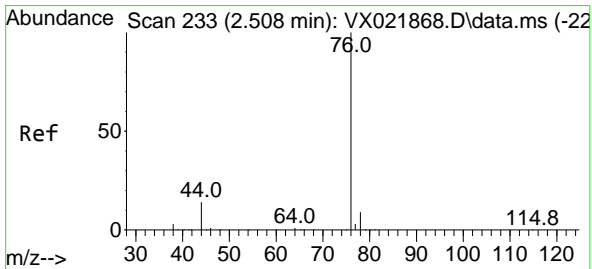
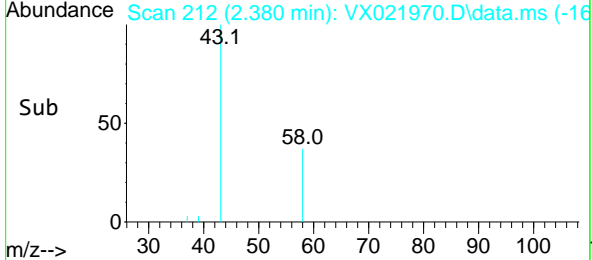
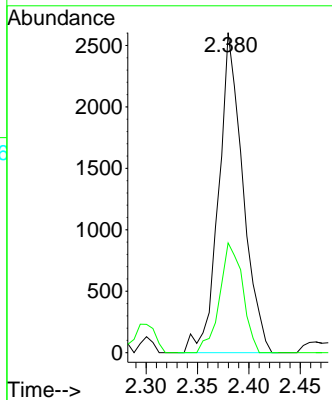


#16  
 Acetone  
 Concen: 7.05 ug/l  
 RT: 2.380 min Scan# 212  
 Delta R.T. -0.012 min  
 Lab File: VX021970.D  
 Acq: 13 May 2021 16:20

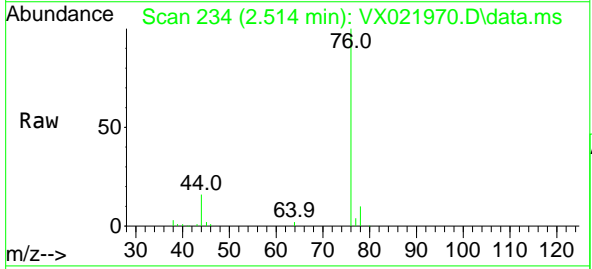
Instrument : MSVOA\_X  
 ClientSampled : KTW-03



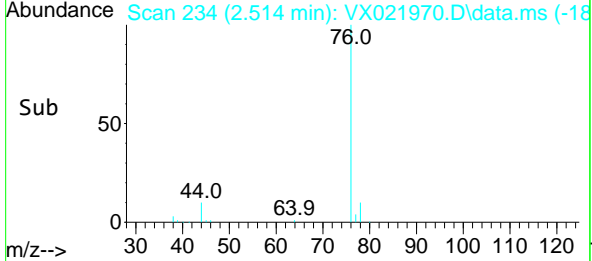
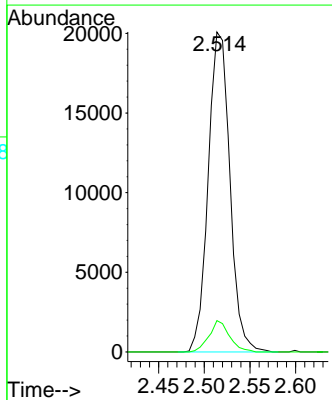
Tgt Ion: 43 Resp: 4270  
 Ion Ratio Lower Upper  
 43 100  
 58 34.3 27.8 41.8

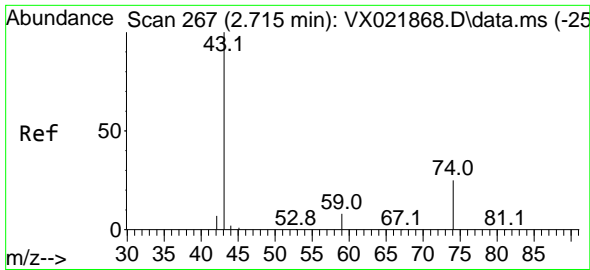


#17  
 Carbon Disulfide  
 Concen: 10.69 ug/l  
 RT: 2.514 min Scan# 234  
 Delta R.T. 0.006 min  
 Lab File: VX021970.D  
 Acq: 13 May 2021 16:20



Tgt Ion: 76 Resp: 33105  
 Ion Ratio Lower Upper  
 76 100  
 78 9.8 7.2 10.8

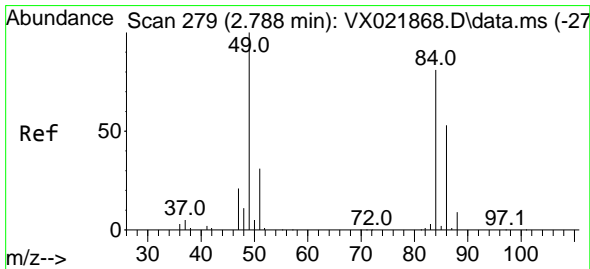
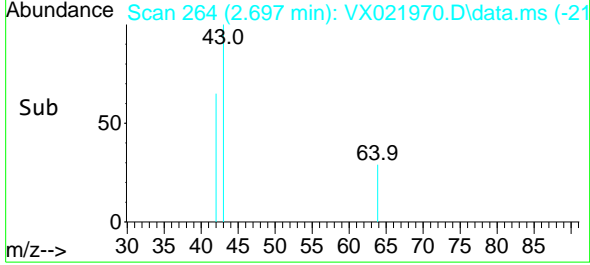
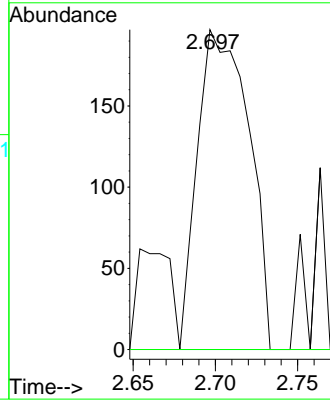
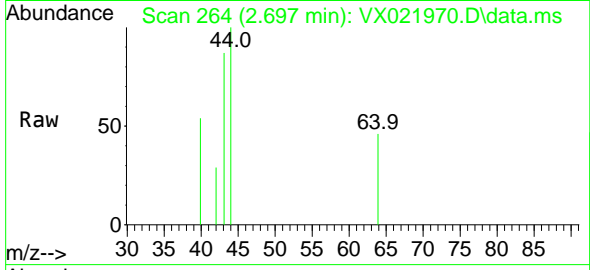




#18  
 Methyl Acetate  
 Concen: 0.25 ug/l  
 RT: 2.697 min Scan# 264  
 Delta R.T. -0.018 min  
 Lab File: VX021970.D  
 Acq: 13 May 2021 16:20

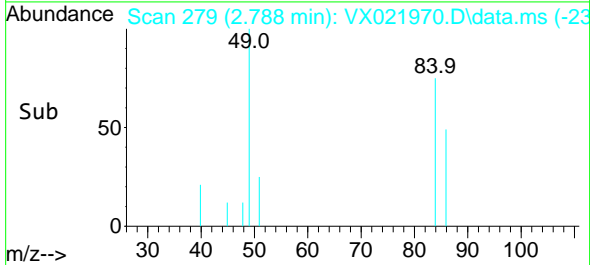
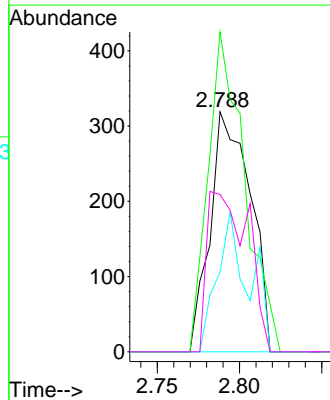
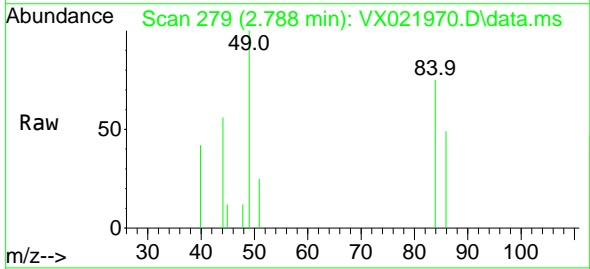
Instrument :  
 MSVOA\_X  
 ClientSampled :  
 KTW-03

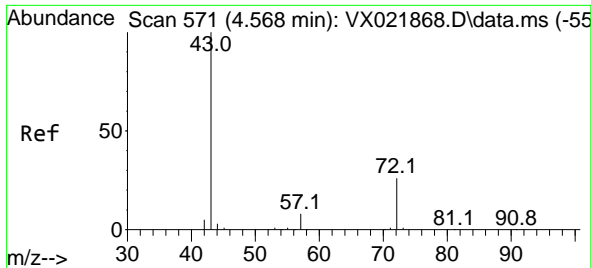
Tgt Ion: 43 Resp: 428  
 Ion Ratio Lower Upper  
 43 100  
 74 0.0 21.9 32.9#



#20  
 Methylene Chloride  
 Concen: 0.58 ug/l  
 RT: 2.788 min Scan# 279  
 Delta R.T. 0.000 min  
 Lab File: VX021970.D  
 Acq: 13 May 2021 16:20

Tgt Ion: 84 Resp: 542  
 Ion Ratio Lower Upper  
 84 100  
 49 133.2 88.6 132.8#  
 51 33.2 27.0 40.6  
 86 65.5 50.3 75.5

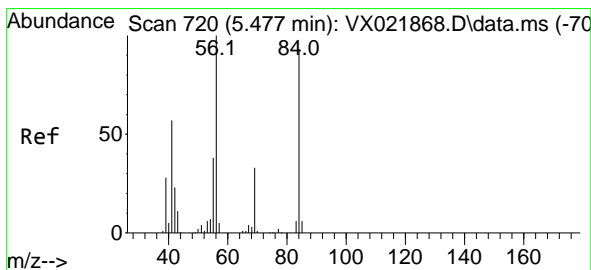
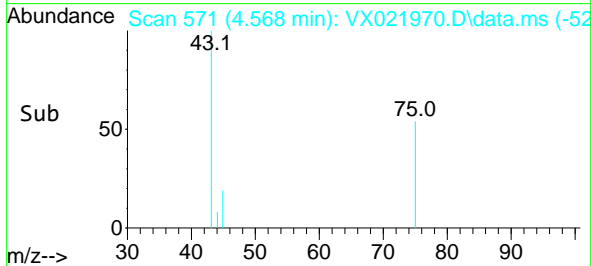
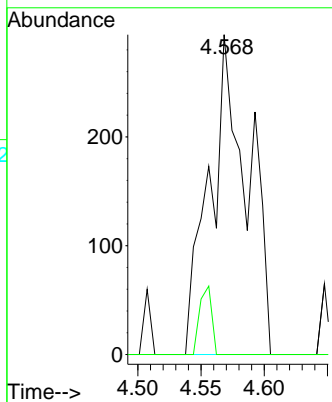
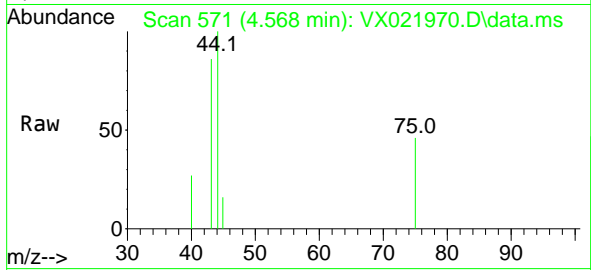




#25  
 2-Butanone  
 Concen: 0.59 ug/l  
 RT: 4.568 min Scan# 571  
 Delta R.T. 0.000 min  
 Lab File: VX021970.D  
 Acq: 13 May 2021 16:20

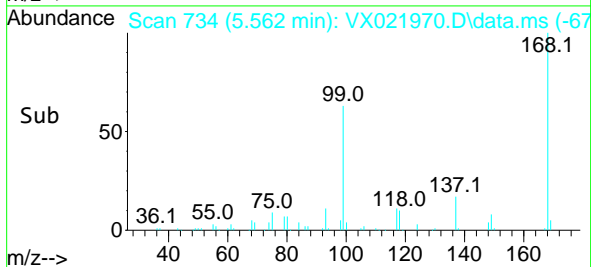
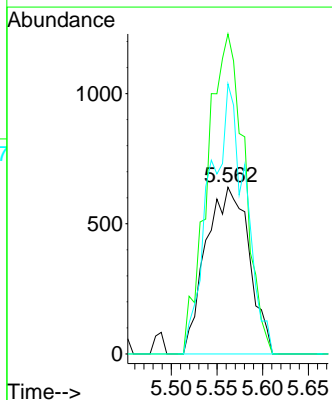
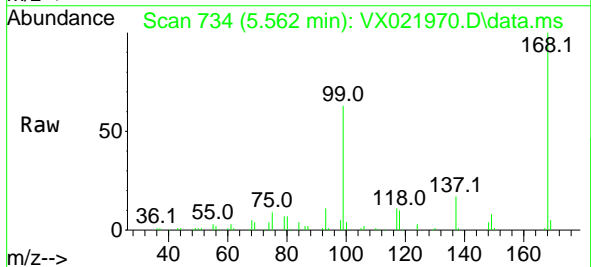
Instrument :  
 MSVOA\_X  
 ClientSampled :  
 KTW-03

Tgt Ion: 43 Resp: 613  
 Ion Ratio Lower Upper  
 43 100  
 72 0.0 23.7 35.5#

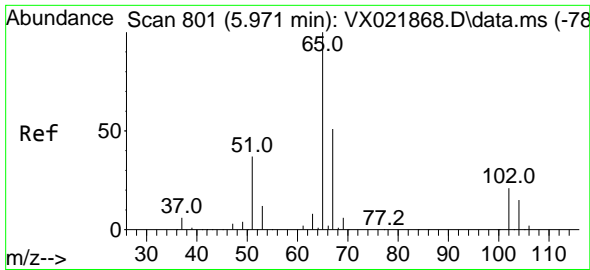


#31  
 Cyclohexane  
 Concen: 1.18 ug/l  
 RT: 5.562 min Scan# 734  
 Delta R.T. 0.085 min  
 Lab File: VX021970.D  
 Acq: 13 May 2021 16:20

Tgt Ion: 56 Resp: 2105  
 Ion Ratio Lower Upper  
 56 100  
 69 192.0 25.3 37.9#  
 84 162.0 71.4 107.0#



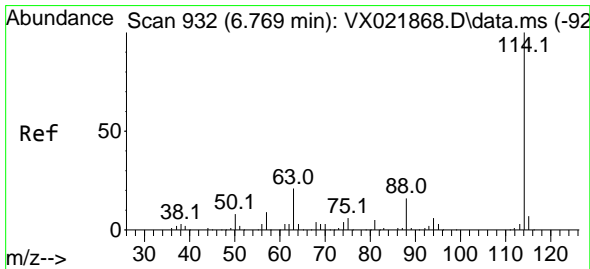
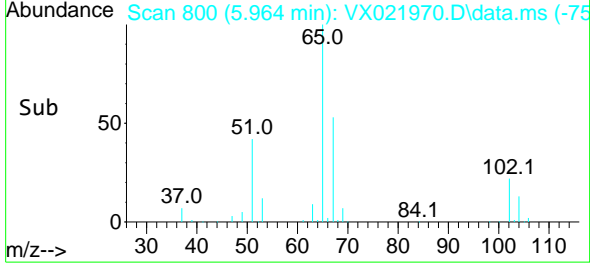
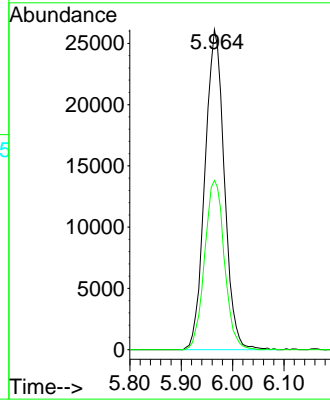
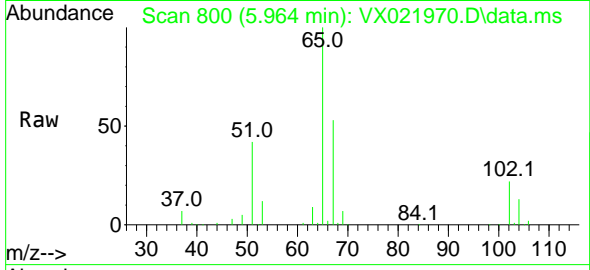




#33  
 1,2-Dichloroethane-d4  
 Concen: 50.73 ug/l  
 RT: 5.964 min Scan# 800  
 Delta R.T. -0.007 min  
 Lab File: VX021970.D  
 Acq: 13 May 2021 16:20

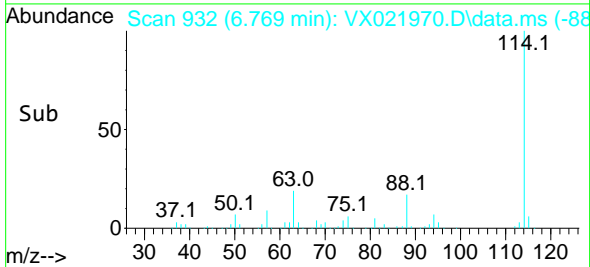
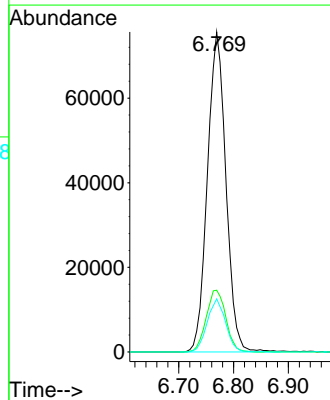
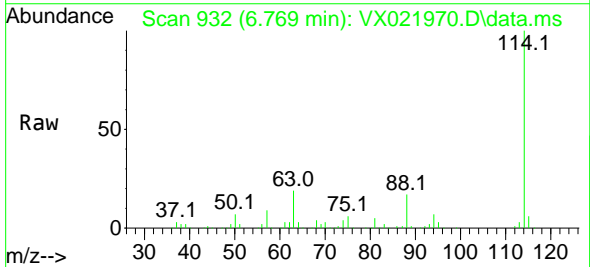
Instrument :  
 MSVOA\_X  
 ClientSampled :  
 KTW-03

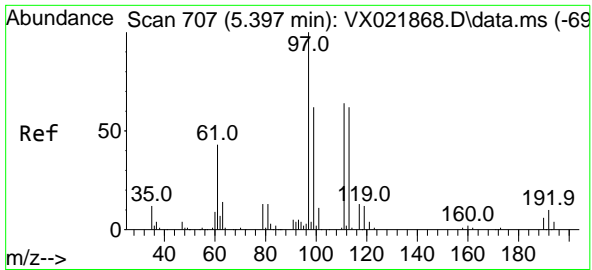
Tgt Ion: 65 Resp: 68555  
 Ion Ratio Lower Upper  
 65 100  
 67 53.8 0.0 105.4



#34  
 1,4-Difluorobenzene  
 Concen: 50.00 ug/l  
 RT: 6.769 min Scan# 932  
 Delta R.T. 0.000 min  
 Lab File: VX021970.D  
 Acq: 13 May 2021 16:20

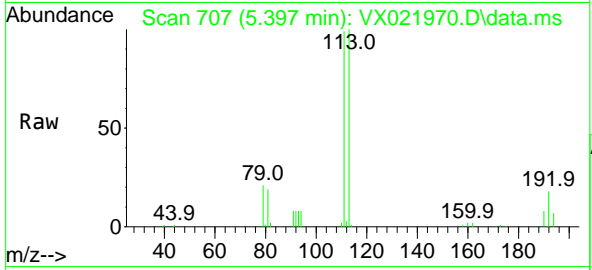
Tgt Ion: 114 Resp: 176989  
 Ion Ratio Lower Upper  
 114 100  
 63 19.3 0.0 40.8  
 88 16.6 0.0 32.8



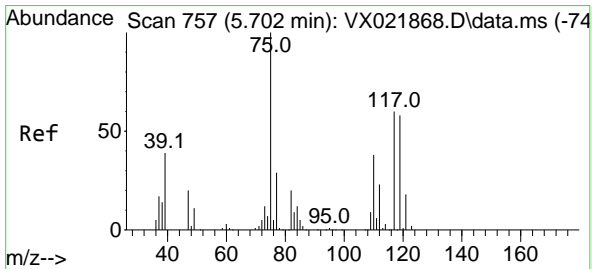
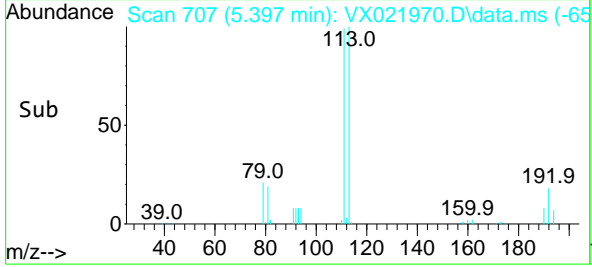
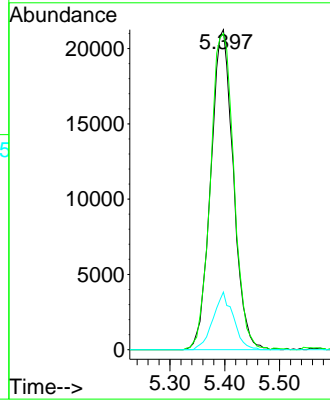


#35  
 Dibromofluoromethane  
 Concen: 50.01 ug/l  
 RT: 5.397 min Scan# 707  
 Delta R.T. 0.000 min  
 Lab File: VX021970.D  
 Acq: 13 May 2021 16:20

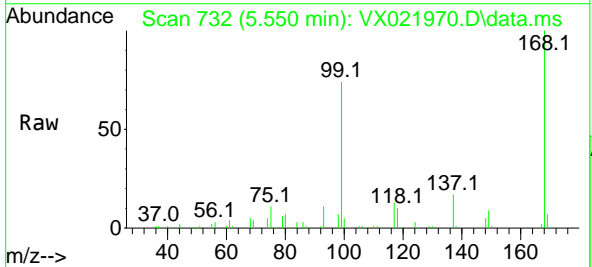
Instrument :  
 MSVOA\_X  
 ClientSampled :  
 KTW-03



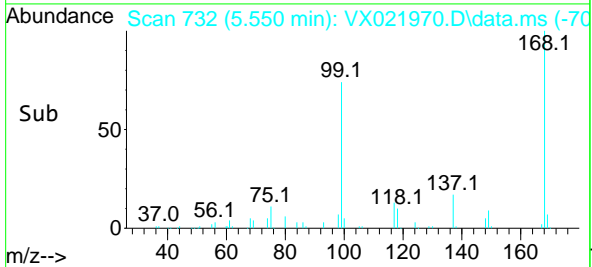
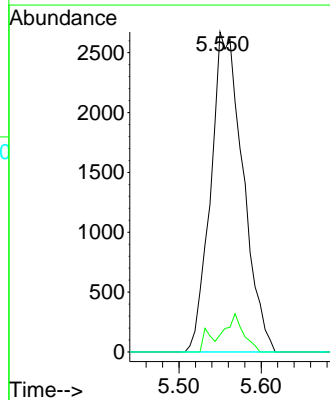
Tgt Ion:113 Resp: 60654  
 Ion Ratio Lower Upper  
 113 100  
 111 102.7 81.9 122.9  
 192 16.2 16.7 25.1#

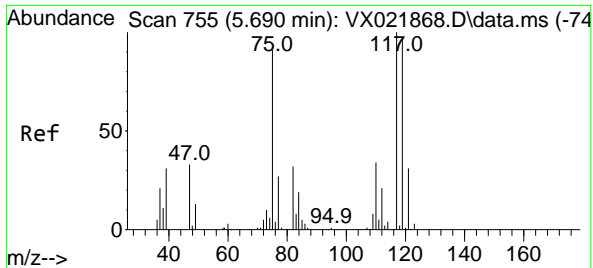


#36  
 1,1-Dichloropropene  
 Concen: 3.87 ug/l  
 RT: 5.550 min Scan# 732  
 Delta R.T. -0.152 min  
 Lab File: VX021970.D  
 Acq: 13 May 2021 16:20



Tgt Ion: 75 Resp: 7265  
 Ion Ratio Lower Upper  
 75 100  
 110 6.8 18.1 54.4#  
 77 0.0 25.3 37.9#

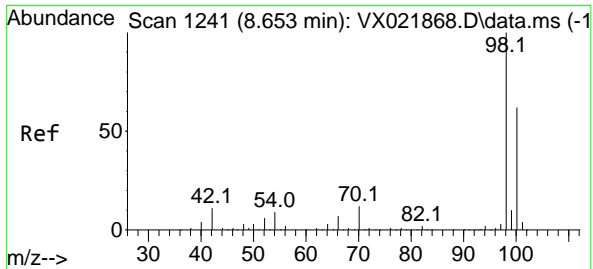
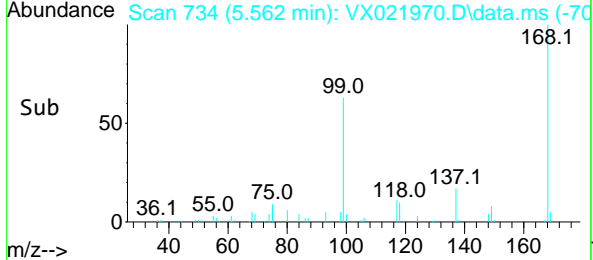
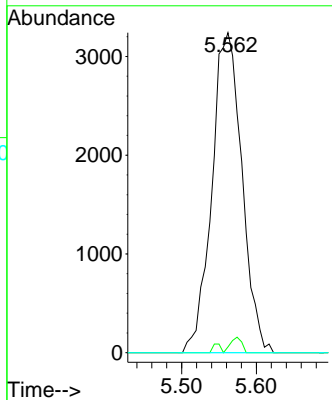
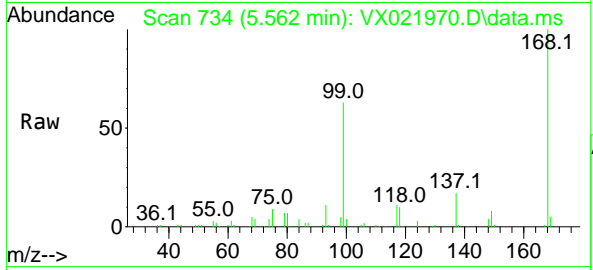




#38  
 Carbon Tetrachloride  
 Concen: 4.84 ug/l  
 RT: 5.562 min Scan# 734  
 Delta R.T. -0.128 min  
 Lab File: VX021970.D  
 Acq: 13 May 2021 16:20

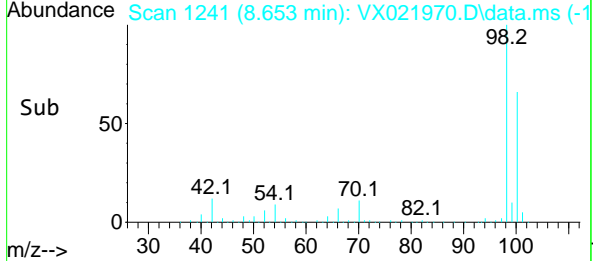
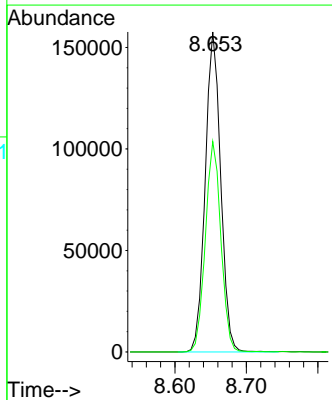
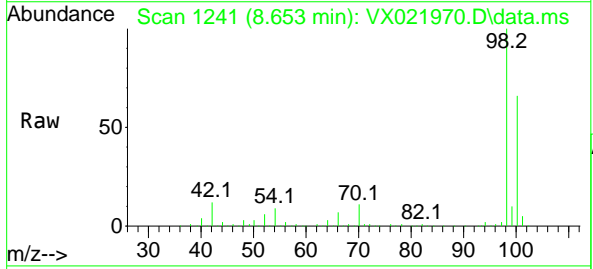
**Instrument :**  
 MSVOA\_X  
**ClientSampled :**  
 KTW-03

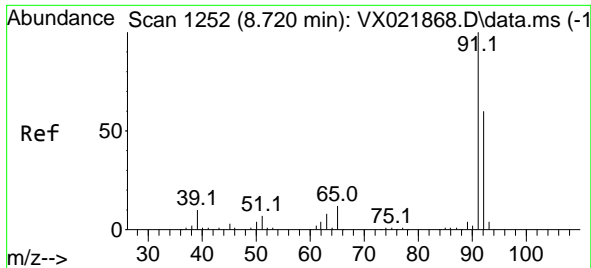
Tgt Ion	Resp	Lower	Upper
117	100		
119	1.8	76.2	114.2#
121	0.0	24.8	37.2#



#50  
 Toluene-d8  
 Concen: 51.12 ug/l  
 RT: 8.653 min Scan# 1241  
 Delta R.T. -0.000 min  
 Lab File: VX021970.D  
 Acq: 13 May 2021 16:20

Tgt Ion	Resp	Lower	Upper
98	100		
100	66.1	51.9	77.9

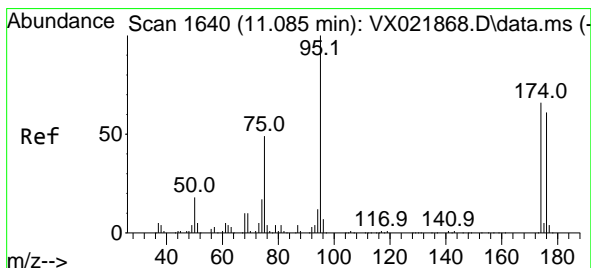
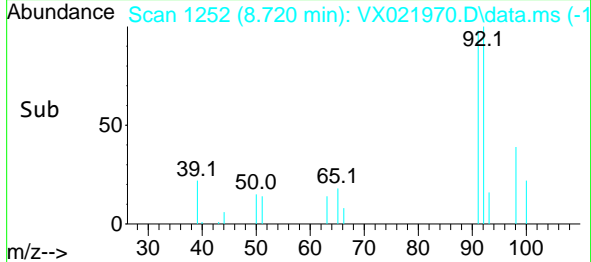
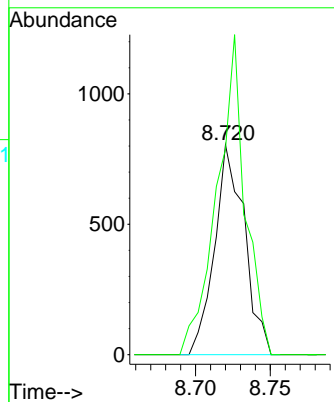
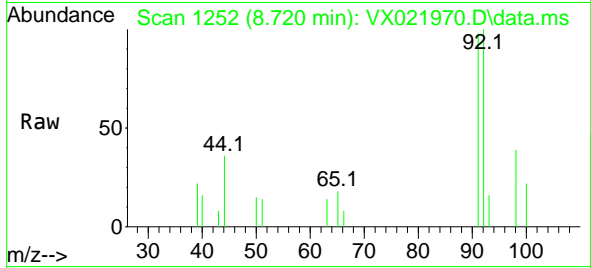




#52  
 Toluene  
 Concen: 0.31 ug/l  
 RT: 8.720 min Scan# 1252  
 Delta R.T. 0.000 min  
 Lab File: VX021970.D  
 Acq: 13 May 2021 16:20

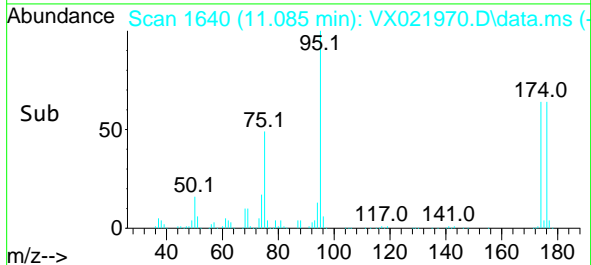
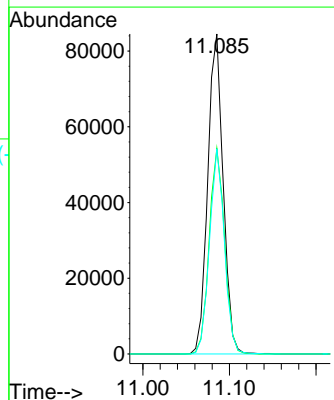
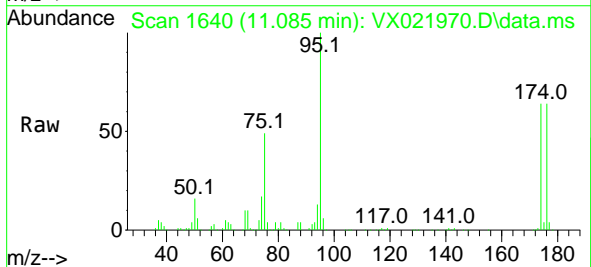
Instrument :  
 MSVOA\_X  
 ClientSampled :  
 KTW-03

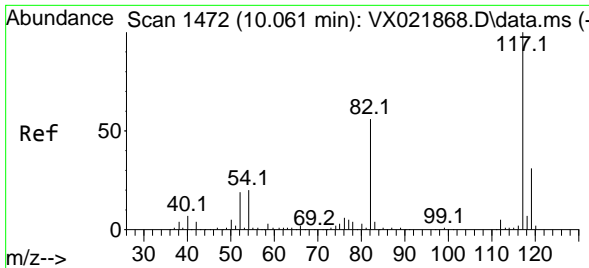
Tgt Ion: 92 Resp: 1116  
 Ion Ratio Lower Upper  
 92 100  
 91 143.3 137.1 205.7



#62  
 4-Bromofluorobenzene  
 Concen: 57.15 ug/l  
 RT: 11.085 min Scan# 1640  
 Delta R.T. 0.000 min  
 Lab File: VX021970.D  
 Acq: 13 May 2021 16:20

Tgt Ion: 95 Resp: 104400  
 Ion Ratio Lower Upper  
 95 100  
 174 64.0 0.0 154.6  
 176 61.9 0.0 155.8

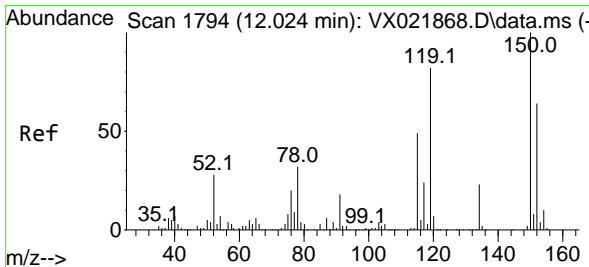
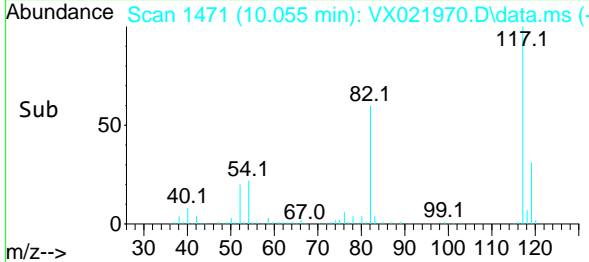
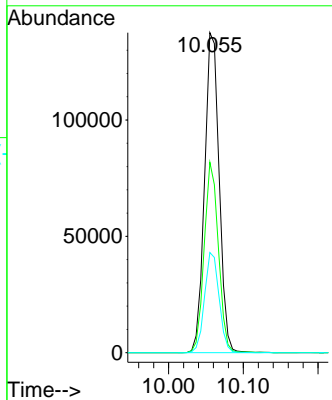
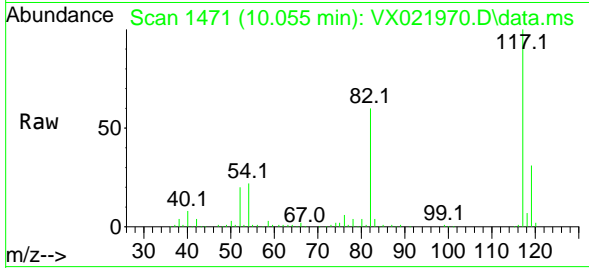




#63  
 Chlorobenzene-d5  
 Concen: 50.00 ug/l  
 RT: 10.055 min Scan# 1471  
 Delta R.T. -0.006 min  
 Lab File: VX021970.D  
 Acq: 13 May 2021 16:20

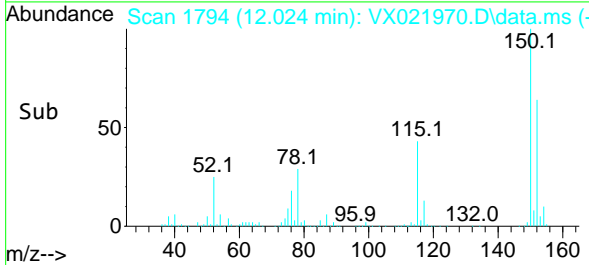
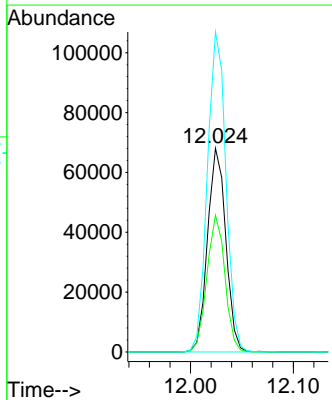
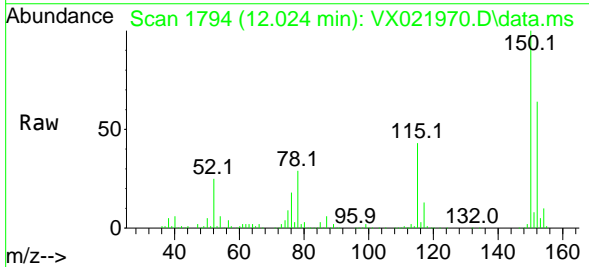
**Instrument :**  
 MSVOA\_X  
**ClientSampled :**  
 KTW-03

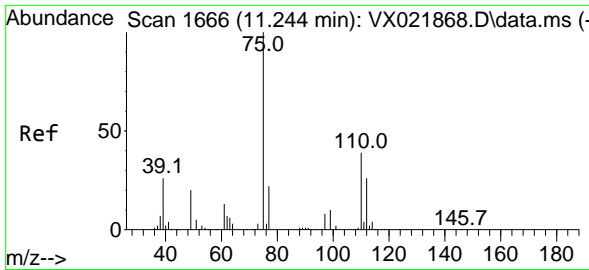
Tgt Ion	Resp	Lower	Upper
117	186680		
117	100		
82	59.5	47.4	71.2
119	31.3	26.6	39.8



#72  
 1,4-Dichlorobenzene-d4  
 Concen: 50.00 ug/l  
 RT: 12.024 min Scan# 1794  
 Delta R.T. 0.000 min  
 Lab File: VX021970.D  
 Acq: 13 May 2021 16:20

Tgt Ion	Resp	Lower	Upper
152	84304		
152	100		
115	66.1	41.1	123.3
150	159.2	0.0	349.0

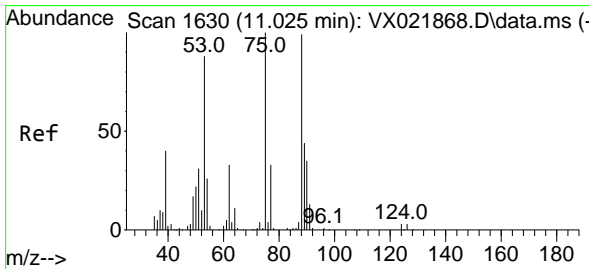
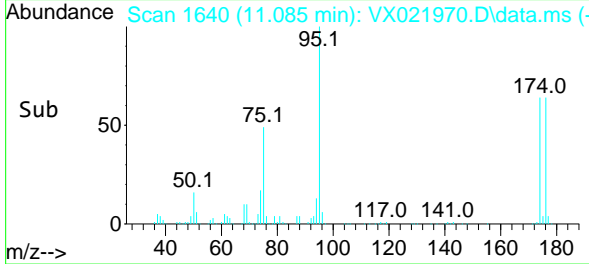
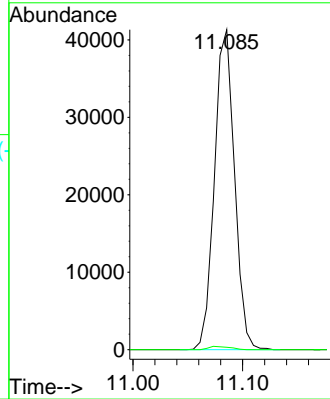
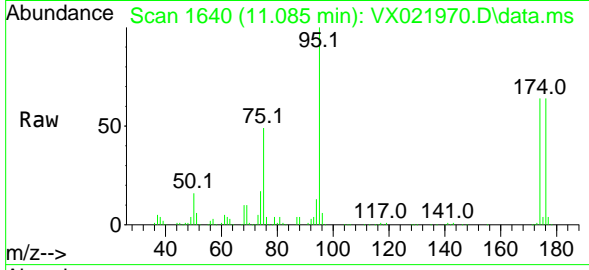




#76  
 1,2,3-Trichloropropane  
 Concen: 21.93 ug/l  
 RT: 11.085 min Scan# 1640  
 Delta R.T. -0.159 min  
 Lab File: VX021970.D  
 Acq: 13 May 2021 16:20

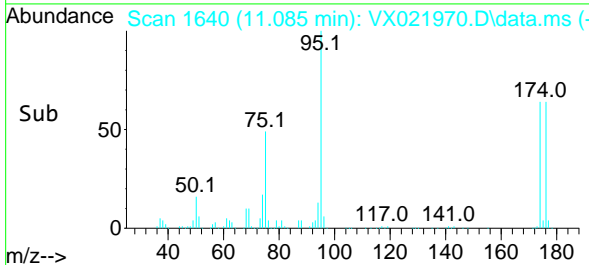
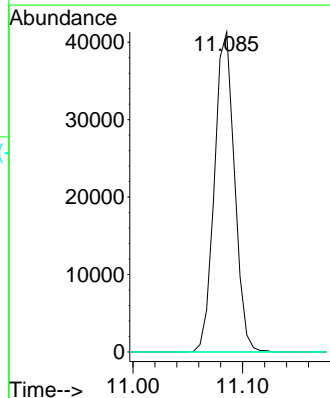
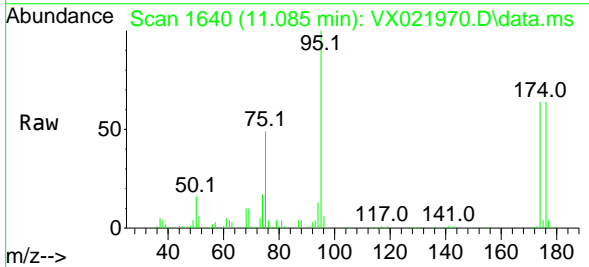
Instrument :  
 MSVOA\_X  
 ClientSampled :  
 KTW-03

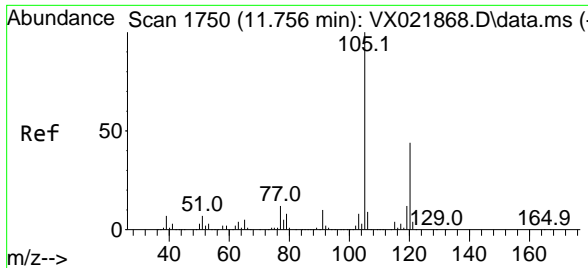
Tgt Ion: 75 Resp: 52565  
 Ion Ratio Lower Upper  
 75 100  
 77 1.1 19.1 57.5#



#81  
 trans-1,4-Dichloro-2-butene  
 Concen: 50.87 ug/l  
 RT: 11.085 min Scan# 1640  
 Delta R.T. 0.060 min  
 Lab File: VX021970.D  
 Acq: 13 May 2021 16:20

Tgt Ion: 75 Resp: 52565  
 Ion Ratio Lower Upper  
 75 100  
 53 0.0 74.5 111.7#  
 89 0.0 37.9 56.9#

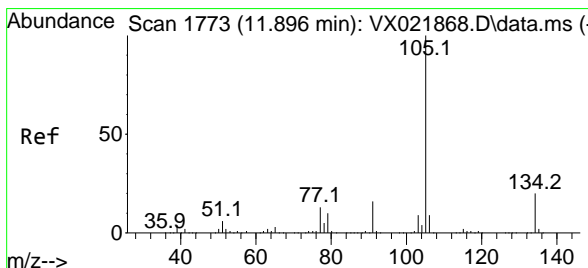
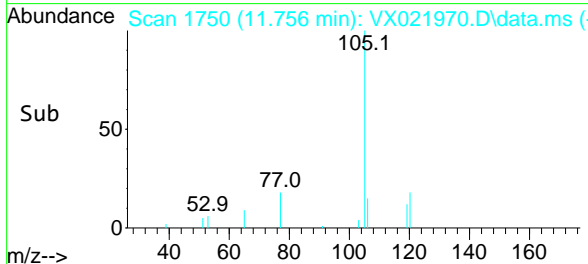
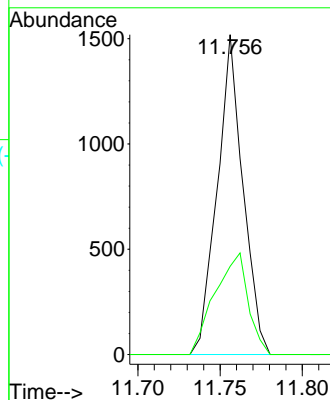
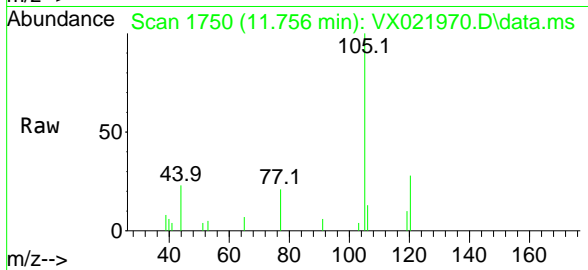




#84  
 1,2,4-Trimethylbenzene  
 Concen: 0.25 ug/l  
 RT: 11.756 min Scan# 1750  
 Delta R.T. 0.000 min  
 Lab File: VX021970.D  
 Acq: 13 May 2021 16:20

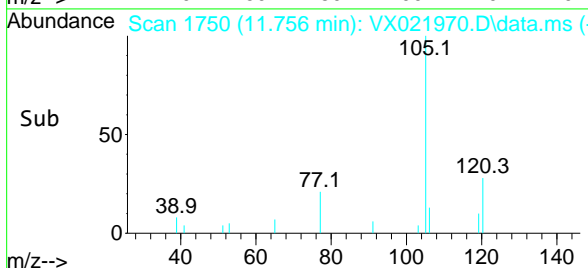
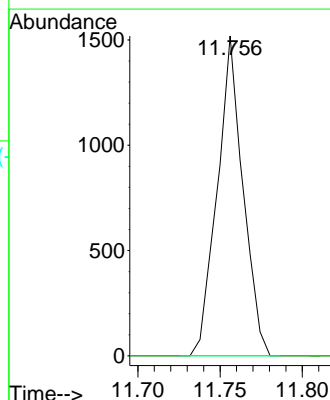
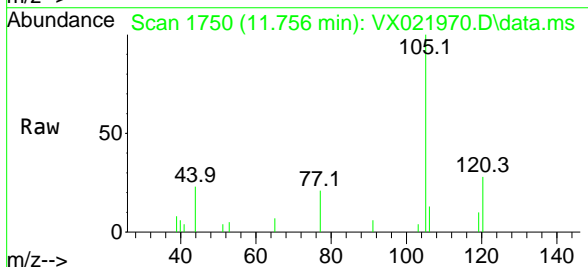
Instrument :  
 MSVOA\_X  
 ClientSampled :  
 KTW-03

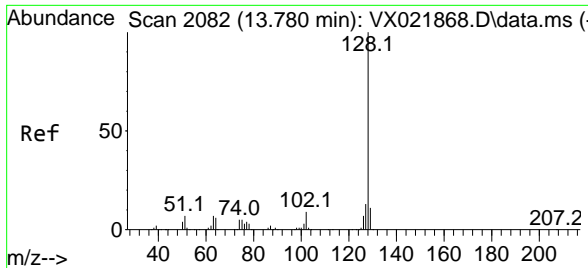
Tgt Ion:105 Resp: 1653  
 Ion Ratio Lower Upper  
 105 100  
 120 41.1 22.4 67.3



#85  
 sec-Butylbenzene  
 Concen: 0.21 ug/l  
 RT: 11.756 min Scan# 1750  
 Delta R.T. -0.140 min  
 Lab File: VX021970.D  
 Acq: 13 May 2021 16:20

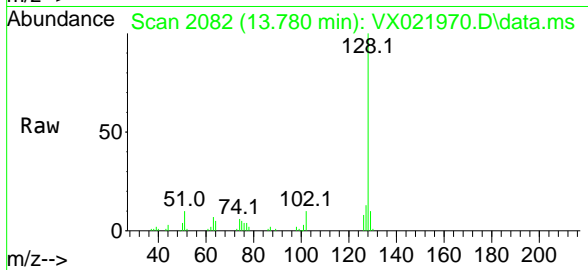
Tgt Ion:105 Resp: 1653  
 Ion Ratio Lower Upper  
 105 100  
 134 0.0 10.0 29.8#





#95  
 Naphthalene  
 Concen: 2.65 ug/l  
 RT: 13.780 min Scan# 2082  
 Delta R.T. 0.000 min  
 Lab File: VX021970.D  
 Acq: 13 May 2021 16:20

Instrument :  
 MSVOA\_X  
 ClientSampled :  
 KTW-03



Tgt Ion:128 Resp: 20021

Ion	Ratio	Lower	Upper
128	100		
127	11.8	10.3	15.5
129	9.2	8.8	13.2

