

Data Path : Z:\voasrv\HPCHEM1\MSVOA\_X\Data\VX051322\  
 Data File : VX028699.D  
 Acq On : 14 May 2022 00:16  
 Operator : JC/MD  
 Sample : PB144781TB  
 Misc : 5.0mL/MSVOA\_X/WATER  
 ALS Vial : 36 Sample Multiplier: 1

Instrument :  
 MSVOA\_X  
 ClientSampleId :  
 PB144781TB

Quant Time: May 16 02:29:44 2022  
 Quant Method : Z:\voasrv\HPCHEM1\MSVOA\_X\Method\82X051222W.M  
 Quant Title : SW846 8260  
 QLast Update : Thu May 12 14:58:53 2022  
 Response via : Initial Calibration

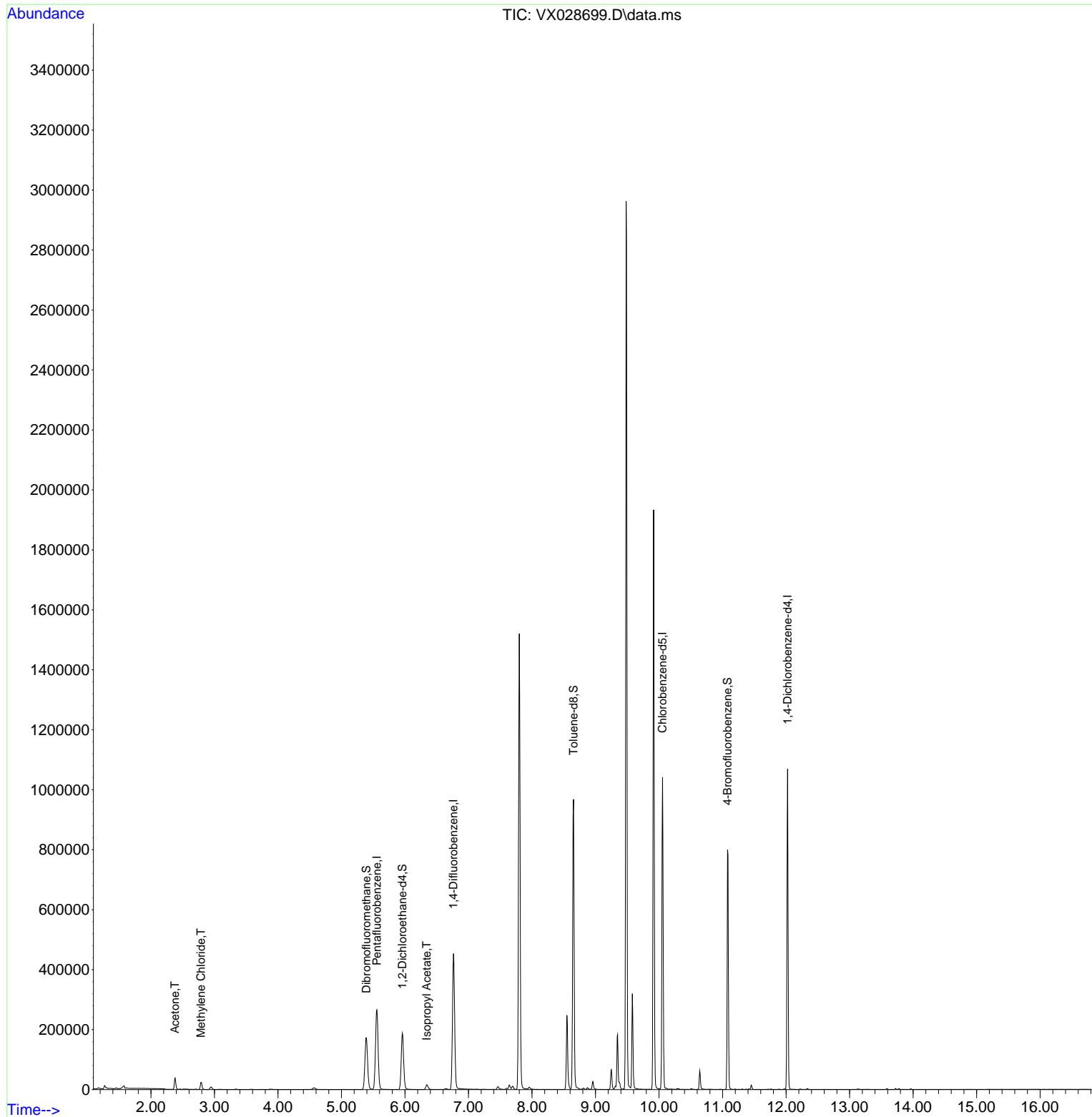
Compound	R.T.	QIon	Response	Conc	Units	Dev(Min)
-----						
Internal Standards						
1) Pentafluorobenzene	5.556	168	245007	50.000	ug/l	0.00
34) 1,4-Difluorobenzene	6.763	114	458947	50.000	ug/l	0.00
63) Chlorobenzene-d5	10.055	117	454228	50.000	ug/l	0.00
72) 1,4-Dichlorobenzene-d4	12.024	152	205753	50.000	ug/l	0.00
System Monitoring Compounds						
33) 1,2-Dichloroethane-d4	5.958	65	177837	52.952	ug/l	0.00
Spiked Amount	50.000	Range	61 - 141	Recovery	=	105.900%
35) Dibromofluoromethane	5.391	113	151263	50.304	ug/l	0.00
Spiked Amount	50.000	Range	69 - 133	Recovery	=	100.600%
50) Toluene-d8	8.653	98	566756	49.993	ug/l	0.00
Spiked Amount	50.000	Range	65 - 126	Recovery	=	99.980%
62) 4-Bromofluorobenzene	11.079	95	213177	50.345	ug/l	0.00
Spiked Amount	50.000	Range	58 - 135	Recovery	=	100.680%
Target Compounds						
						Qvalue
16) Acetone	2.380	43	39556	27.443	ug/l	89
20) Methylene Chloride	2.788	84	11333	3.748	ug/l	93
43) Isopropyl Acetate	6.342	43	21190	2.871	ug/l	92
-----						

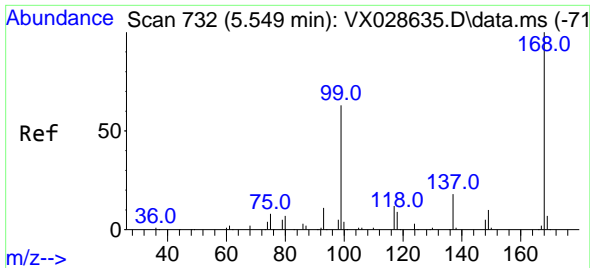
(#) = qualifier out of range (m) = manual integration (+) = signals summed

Data Path : Z:\voasrv\HPCHEM1\MSVOA\_X\Data\VX051322\  
Data File : VX028699.D  
Acq On : 14 May 2022 00:16  
Operator : JC/MD  
Sample : PB144781TB  
Misc : 5.0mL/MSVOA\_X/WATER  
ALS Vial : 36 Sample Multiplier: 1

Instrument :  
MSVOA\_X  
ClientSampleId :  
PB144781TB

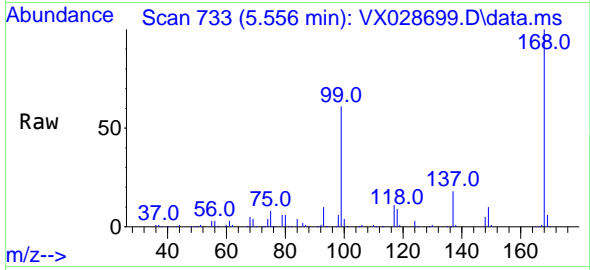
Quant Time: May 16 02:29:44 2022  
Quant Method : Z:\voasrv\HPCHEM1\MSVOA\_X\Method\82X051222W.M  
Quant Title : SW846 8260  
QLast Update : Thu May 12 14:58:53 2022  
Response via : Initial Calibration



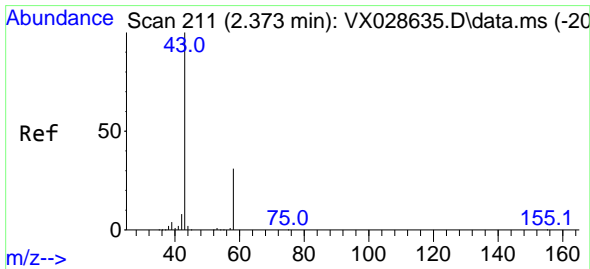
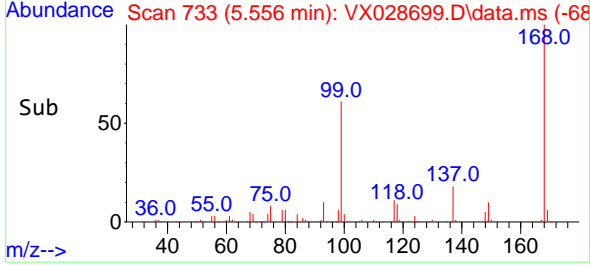
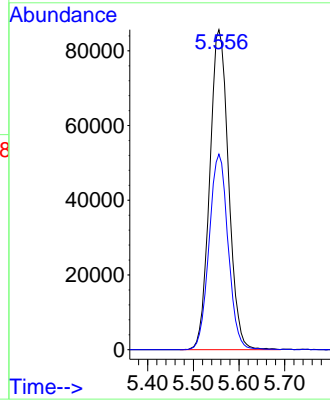


#1  
 Pentafluorobenzene  
 Concen: 50.000 ug/l  
 RT: 5.556 min Scan# 71  
 Delta R.T. 0.007 min  
 Lab File: VX028699.D  
 Acq: 14 May 2022 00:16

Instrument :  
 MSVOA\_X  
 ClientSampleId :  
 PB144781TB

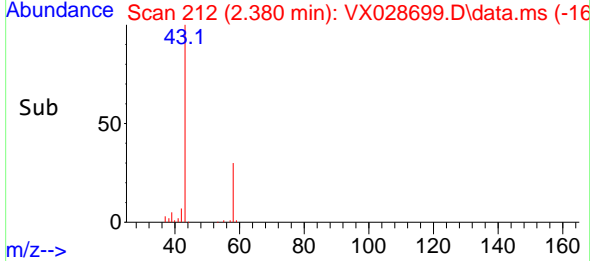
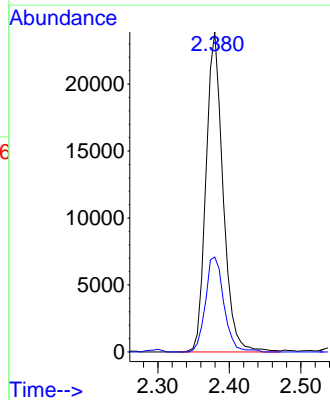
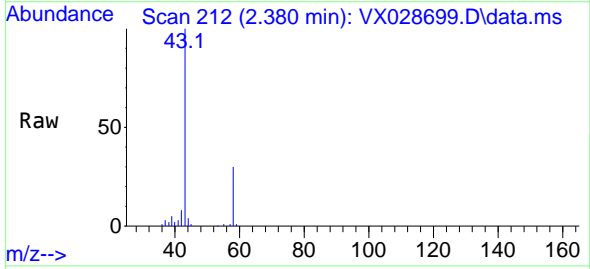


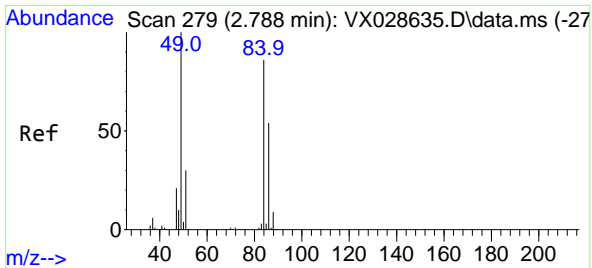
Tgt Ion:168 Resp: 245007  
 Ion Ratio Lower Upper  
 168 100  
 99 61.1 41.7 62.5



#16  
 Acetone  
 Concen: 27.443 ug/l  
 RT: 2.380 min Scan# 212  
 Delta R.T. 0.007 min  
 Lab File: VX028699.D  
 Acq: 14 May 2022 00:16

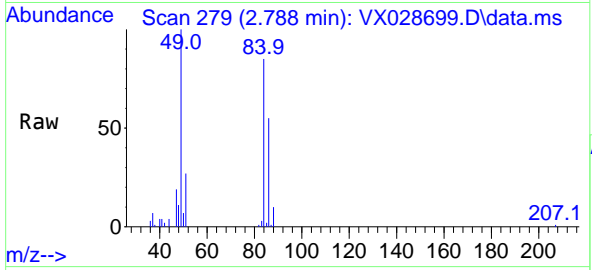
Tgt Ion: 43 Resp: 39556  
 Ion Ratio Lower Upper  
 43 100  
 58 29.6 28.8 43.2





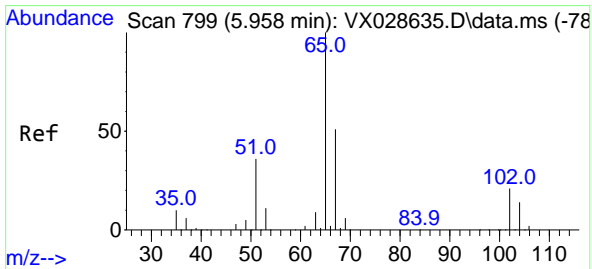
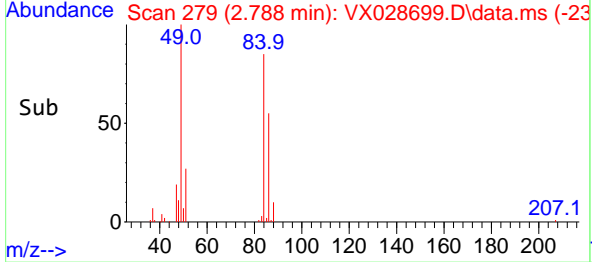
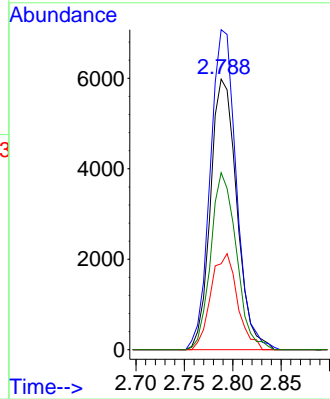
#20  
 Methylene Chloride  
 Concen: 3.748 ug/l  
 RT: 2.788 min Scan# 21  
 Delta R.T. 0.000 min  
 Lab File: VX028699.D  
 Acq: 14 May 2022 00:16

Instrument : MSVOA\_X  
 ClientSampleId : PB144781TB



Tgt Ion: 84 Resp: 11333

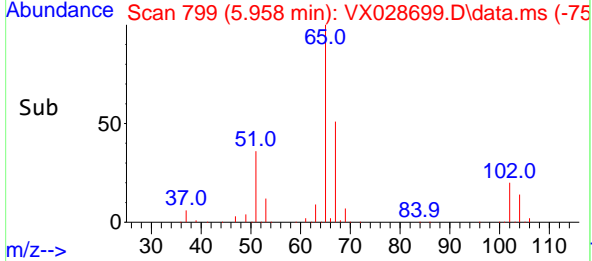
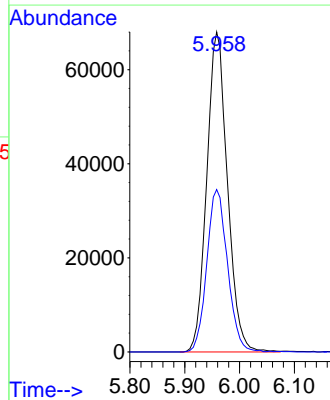
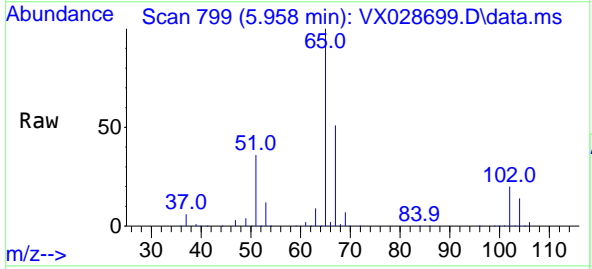
Ion	Ratio	Lower	Upper
84	100		
49	118.3	85.5	128.3
51	31.7	26.6	39.8
86	65.4	51.5	77.3

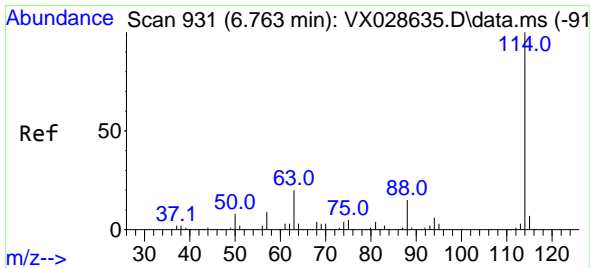


#33  
 1,2-Dichloroethane-d4  
 Concen: 52.952 ug/l  
 RT: 5.958 min Scan# 799  
 Delta R.T. 0.000 min  
 Lab File: VX028699.D  
 Acq: 14 May 2022 00:16

Tgt Ion: 65 Resp: 177837

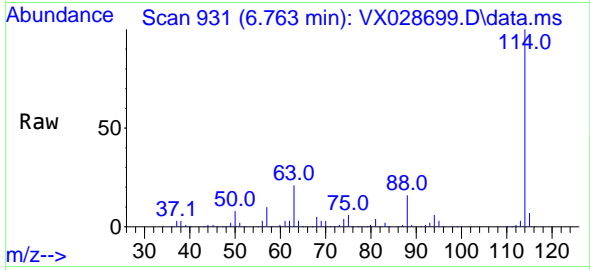
Ion	Ratio	Lower	Upper
65	100		
67	50.9	0.0	107.4



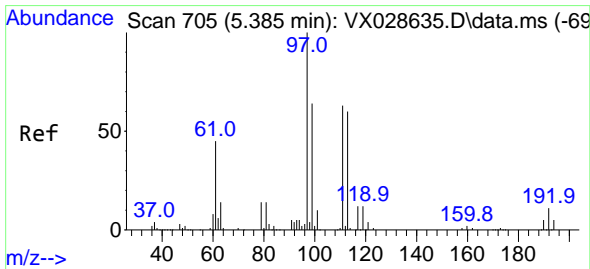
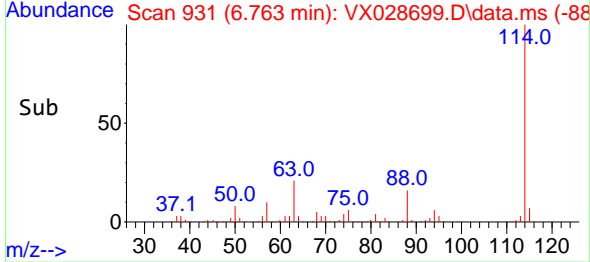
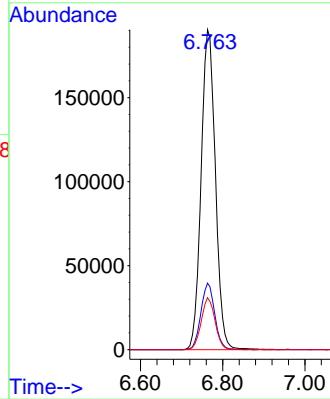


#34  
 1,4-Difluorobenzene  
 Concen: 50.000 ug/l  
 RT: 6.763 min Scan# 91  
 Delta R.T. -0.000 min  
 Lab File: VX028699.D  
 Acq: 14 May 2022 00:16

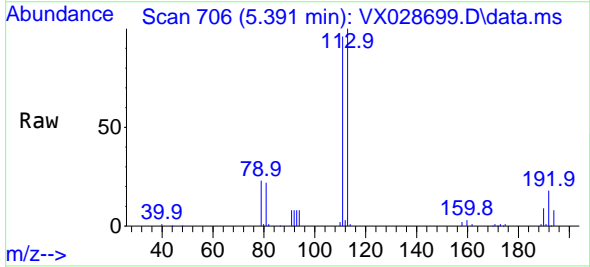
Instrument : MSVOA\_X  
 ClientSampleId : PB144781TB



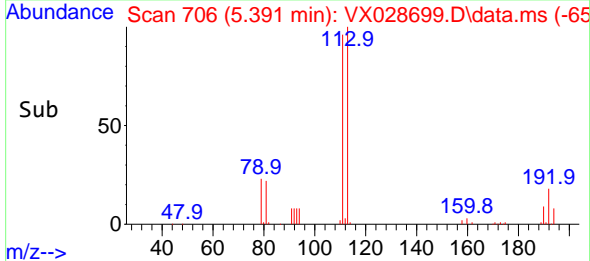
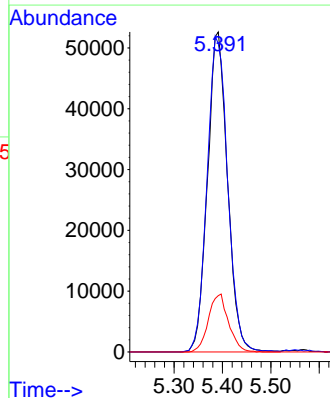
Tgt Ion:114 Resp: 458947  
 Ion Ratio Lower Upper  
 114 100  
 63 20.8 0.0 36.8  
 88 16.3 0.0 32.4

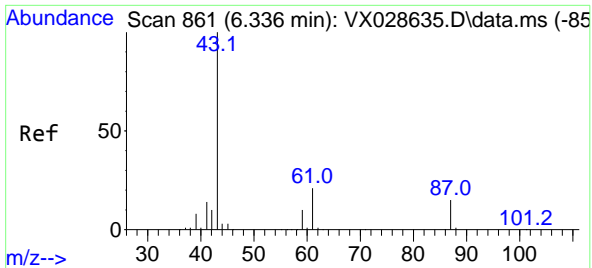


#35  
 Dibromofluoromethane  
 Concen: 50.304 ug/l  
 RT: 5.391 min Scan# 706  
 Delta R.T. 0.006 min  
 Lab File: VX028699.D  
 Acq: 14 May 2022 00:16



Tgt Ion:113 Resp: 151263  
 Ion Ratio Lower Upper  
 113 100  
 111 101.7 82.8 124.2  
 192 18.1 16.9 25.3





#43  
 Isopropyl Acetate  
 Concen: 2.871 ug/l  
 RT: 6.342 min Scan# 80  
 Delta R.T. 0.006 min  
 Lab File: VX028699.D  
 Acq: 14 May 2022 00:16

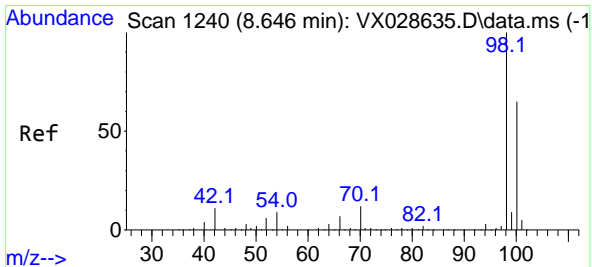
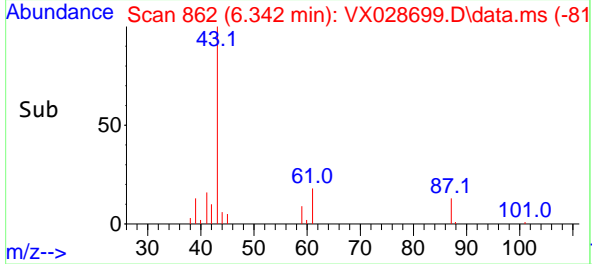
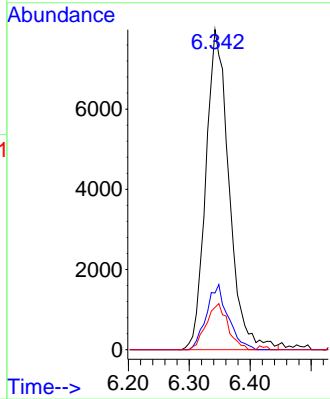
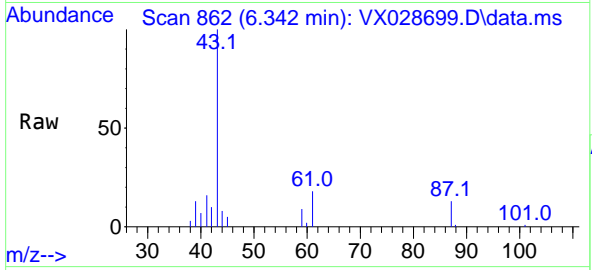
Instrument :

MSVOA\_X

ClientSampleId :

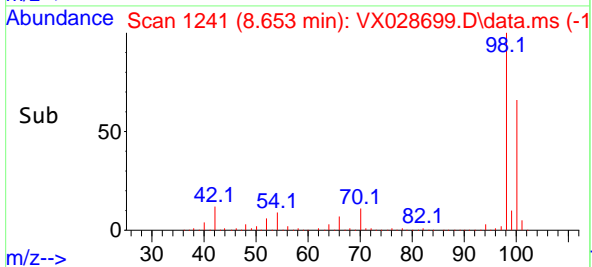
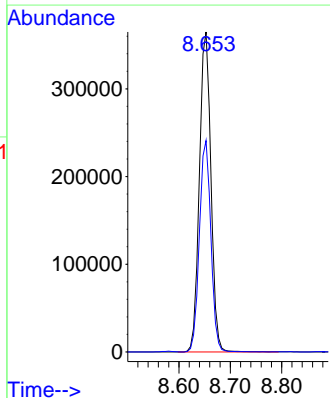
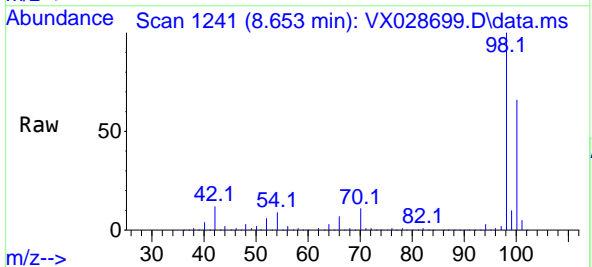
PB144781TB

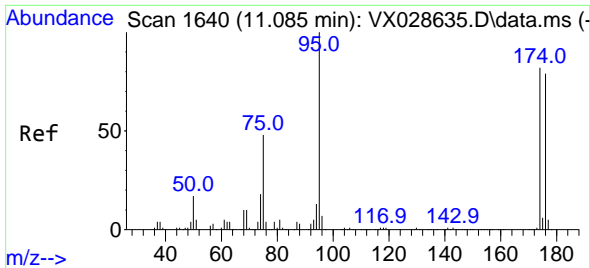
Tgt Ion: 43 Resp: 21190  
 Ion Ratio Lower Upper  
 43 100  
 61 19.0 18.5 27.7  
 87 13.4 13.0 19.6



#50  
 Toluene-d8  
 Concen: 49.993 ug/l  
 RT: 8.653 min Scan# 1241  
 Delta R.T. 0.007 min  
 Lab File: VX028699.D  
 Acq: 14 May 2022 00:16

Tgt Ion: 98 Resp: 566756  
 Ion Ratio Lower Upper  
 98 100  
 100 65.9 52.6 78.8



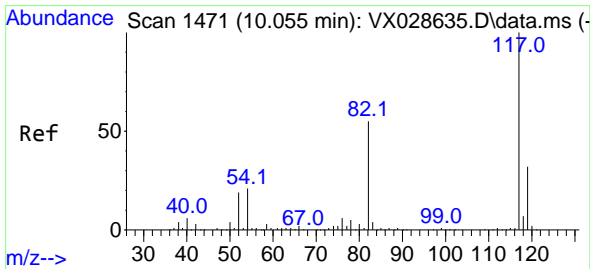
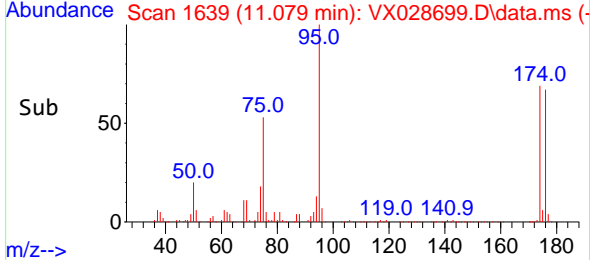
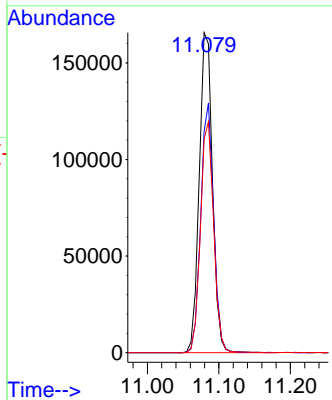
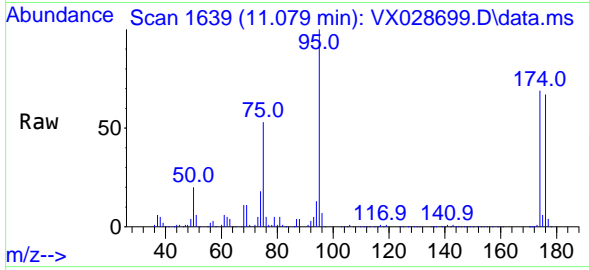


#62  
 4-Bromofluorobenzene  
 Concen: 50.345 ug/l  
 RT: 11.079 min Scan# 11  
 Delta R.T. -0.006 min  
 Lab File: VX028699.D  
 Acq: 14 May 2022 00:16

Instrument : MSVOA\_X  
 ClientSampleId : PB144781TB

Tgt Ion: 95 Resp: 213177

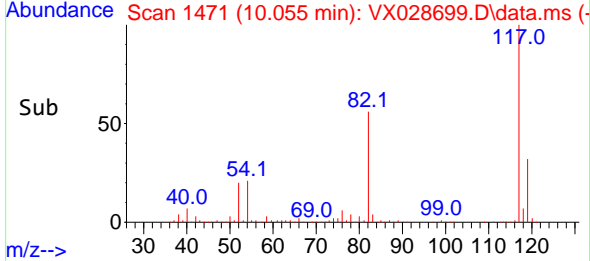
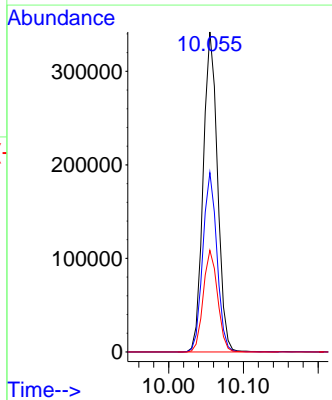
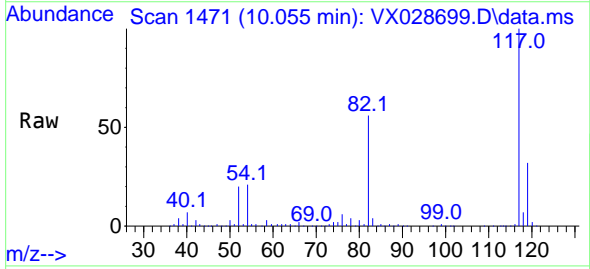
Ion	Ratio	Lower	Upper
95	100		
174	76.0	0.0	163.0
176	72.0	0.0	155.0

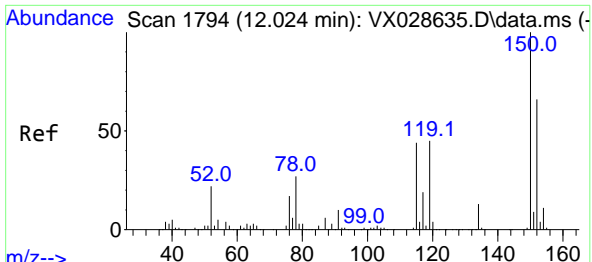


#63  
 Chlorobenzene-d5  
 Concen: 50.000 ug/l  
 RT: 10.055 min Scan# 1471  
 Delta R.T. 0.000 min  
 Lab File: VX028699.D  
 Acq: 14 May 2022 00:16

Tgt Ion: 117 Resp: 454228

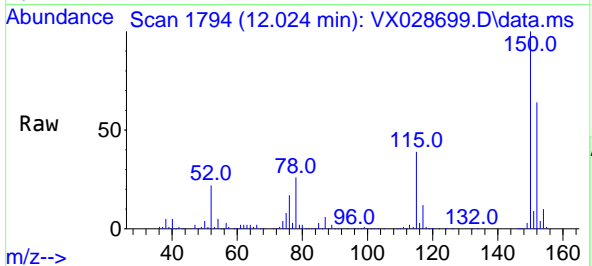
Ion	Ratio	Lower	Upper
117	100		
82	56.1	41.8	62.8
119	31.7	24.8	37.2





#72  
 1,4-Dichlorobenzene-d4  
 Concen: 50.000 ug/l  
 RT: 12.024 min Scan# 11  
 Delta R.T. 0.000 min  
 Lab File: VX028699.D  
 Acq: 14 May 2022 00:16

Instrument :  
 MSVOA\_X  
 ClientSampleId :  
 PB144781TB



Tgt Ion:152 Resp: 205753

Ion	Ratio	Lower	Upper
152	100		
115	61.1	37.5	112.7
150	156.4	0.0	338.2

