

Data Path : Z:\voasrv\HPCHEM1\MSVOA_X\Data\VX051322\
 Data File : VX028714.D
 Acq On : 14 May 2022 06:04
 Operator : JC/MD
 Sample : N2813-06
 Misc : 5.0mL/MSVOA_X/WATER
 ALS Vial : 51 Sample Multiplier: 1

Instrument :
 MSVOA_X
 ClientSampleId :
 BUR-1144

Quant Time: May 16 02:34:59 2022
 Quant Method : Z:\voasrv\HPCHEM1\MSVOA_X\Method\82X051222W.M
 Quant Title : SW846 8260
 QLast Update : Thu May 12 14:58:53 2022
 Response via : Initial Calibration

Compound	R.T.	QIon	Response	Conc	Units	Dev(Min)

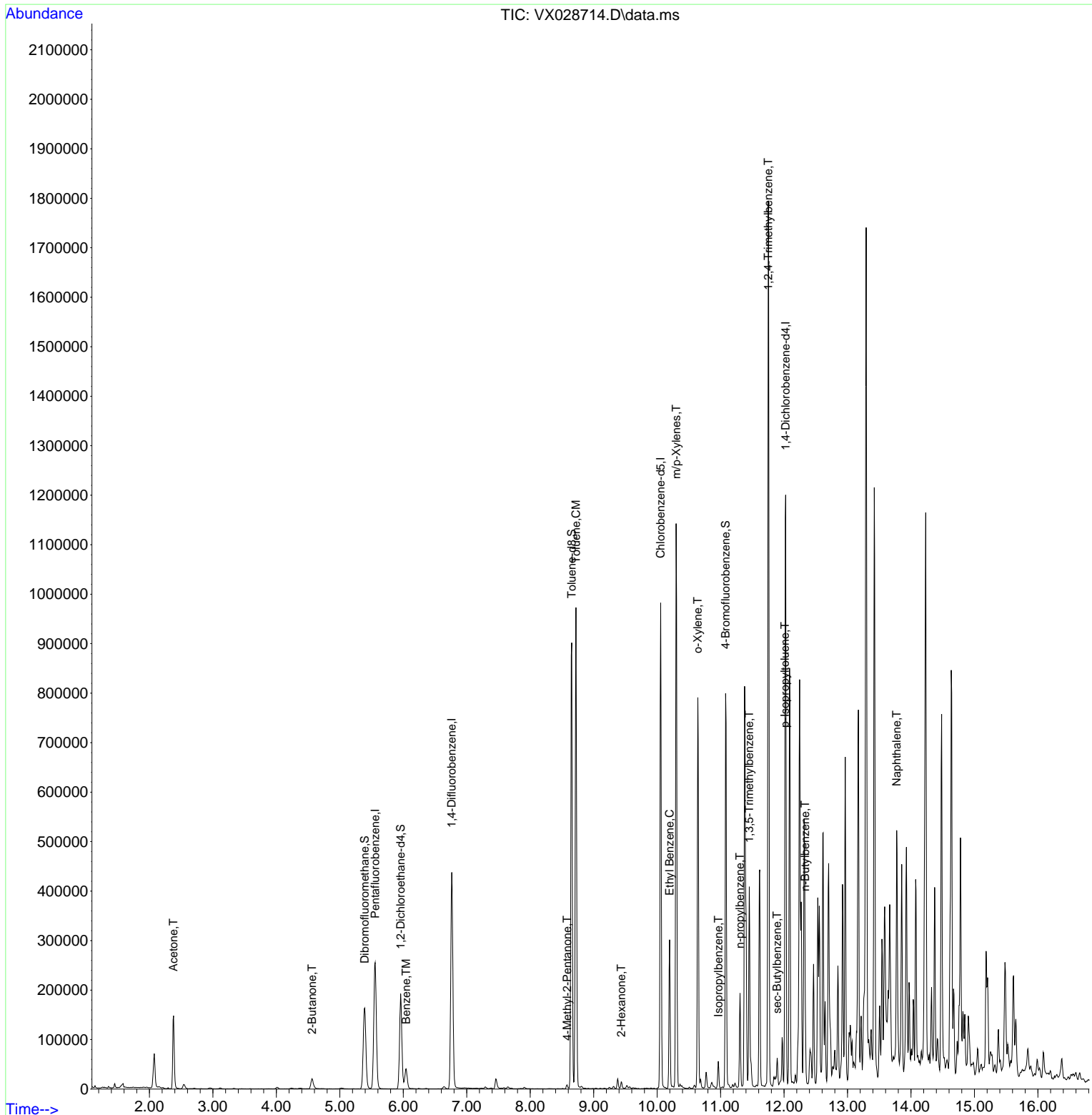
Internal Standards						
1) Pentafluorobenzene	5.556	168	232902	50.000	ug/l	# 0.00
34) 1,4-Difluorobenzene	6.763	114	438555	50.000	ug/l	0.00
63) Chlorobenzene-d5	10.055	117	422541	50.000	ug/l	0.00
72) 1,4-Dichlorobenzene-d4	12.024	152	237641	50.000	ug/l	0.00
System Monitoring Compounds						
33) 1,2-Dichloroethane-d4	5.958	65	170627	53.445	ug/l	0.00
Spiked Amount	50.000	Range 61 - 141	Recovery	=	106.900%	
35) Dibromofluoromethane	5.391	113	143865	50.069	ug/l	0.00
Spiked Amount	50.000	Range 69 - 133	Recovery	=	100.140%	
50) Toluene-d8	8.653	98	533778	49.273	ug/l	0.00
Spiked Amount	50.000	Range 65 - 126	Recovery	=	98.540%	
62) 4-Bromofluorobenzene	11.079	95	204130	50.450	ug/l	0.00
Spiked Amount	50.000	Range 58 - 135	Recovery	=	100.900%	
Target Compounds						
						Qvalue
16) Acetone	2.380	43	157335	114.829	ug/l	93
25) 2-Butanone	4.562	43	33647	15.645	ug/l	98
40) Benzene	6.044	78	48907	3.943	ug/l	98
51) 4-Methyl-2-Pentanone	8.580	43	4865	1.047	ug/l	88
52) Toluene	8.720	92	353913	44.357	ug/l	99
59) 2-Hexanone	9.433	43	8643	2.395	ug/l	86
67) Ethyl Benzene	10.195	91	165521	10.302	ug/l	99
68) m/p-Xylenes	10.299	106	254831	40.738	ug/l	98
69) o-Xylene	10.640	106	166717	27.070	ug/l	98
73) Isopropylbenzene	10.964	105	26236	1.456	ug/l	100
78) n-propylbenzene	11.305	91	109053	5.231	ug/l	99
80) 1,3,5-Trimethylbenzene	11.451	105	166351	11.078	ug/l	99
84) 1,2,4-Trimethylbenzene	11.750	105	759280	50.423	ug/l	100
85) sec-Butylbenzene	11.890	105	27125	1.512	ug/l	86
86) p-Isopropyltoluene	12.012	119	20188	1.341	ug/l	93
89) n-Butylbenzene	12.329	91	87334	6.698	ug/l	# 37
95) Naphthalene	13.774	128	293592	17.386	ug/l	98

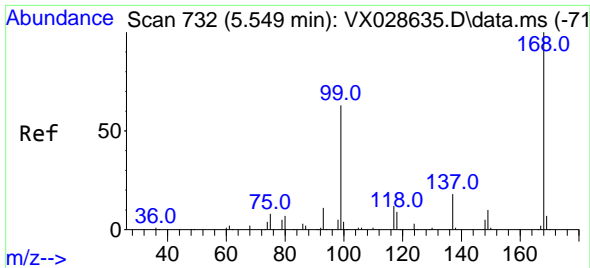
(#) = qualifier out of range (m) = manual integration (+) = signals summed

Data Path : Z:\voasrv\HPCHEM1\MSVOA_X\Data\VX051322\
 Data File : VX028714.D
 Acq On : 14 May 2022 06:04
 Operator : JC/MD
 Sample : N2813-06
 Misc : 5.0mL/MSVOA_X/WATER
 ALS Vial : 51 Sample Multiplier: 1

Instrument :
 MSVOA_X
 ClientSampleId :
 BUR-1144

Quant Time: May 16 02:34:59 2022
 Quant Method : Z:\voasrv\HPCHEM1\MSVOA_X\Method\82X051222W.M
 Quant Title : SW846 8260
 QLast Update : Thu May 12 14:58:53 2022
 Response via : Initial Calibration

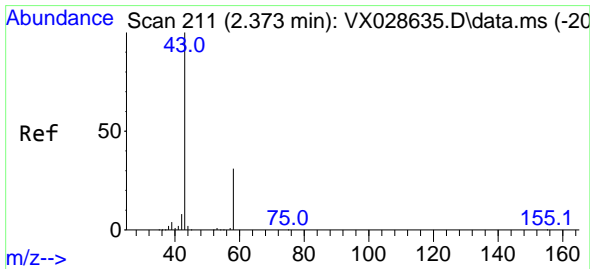
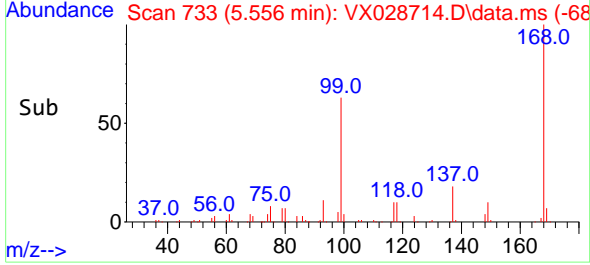
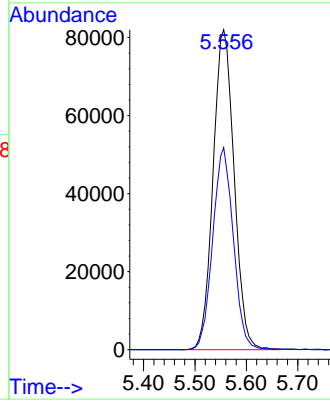
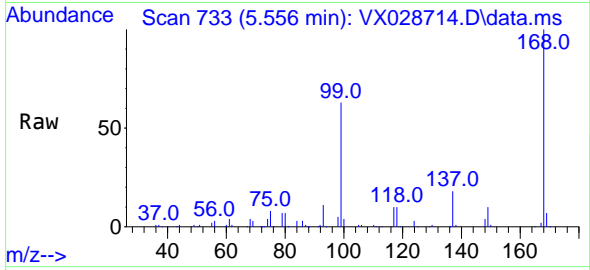




#1
 Pentafluorobenzene
 Concen: 50.000 ug/l
 RT: 5.556 min Scan# 71
 Delta R.T. 0.007 min
 Lab File: VX028714.D
 Acq: 14 May 2022 06:04

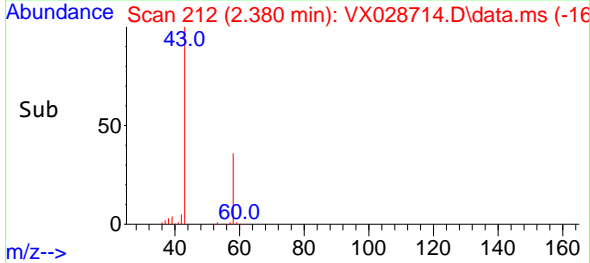
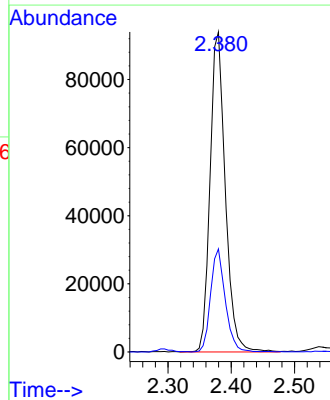
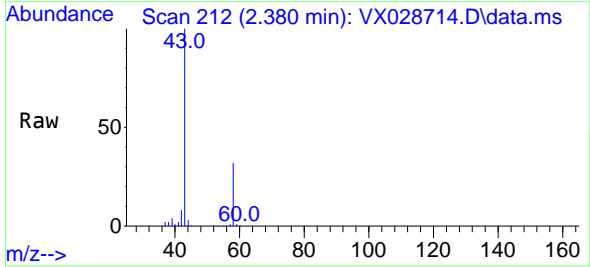
Instrument :
 MSVOA_X
 ClientSampleId :
 BUR-1144

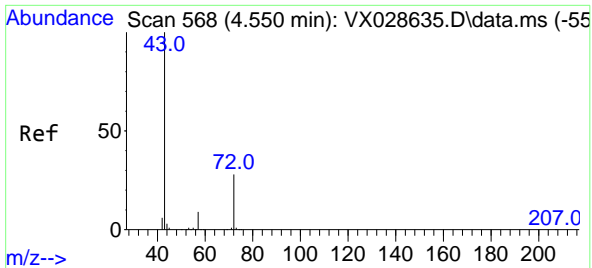
Tgt Ion:168 Resp: 232902
 Ion Ratio Lower Upper
 168 100
 99 63.1 41.7 62.5#



#16
 Acetone
 Concen: 114.829 ug/l
 RT: 2.380 min Scan# 212
 Delta R.T. 0.007 min
 Lab File: VX028714.D
 Acq: 14 May 2022 06:04

Tgt Ion: 43 Resp: 157335
 Ion Ratio Lower Upper
 43 100
 58 32.1 28.8 43.2

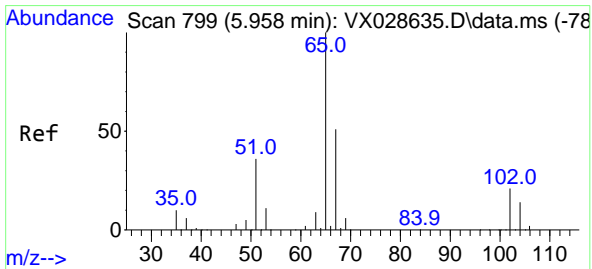
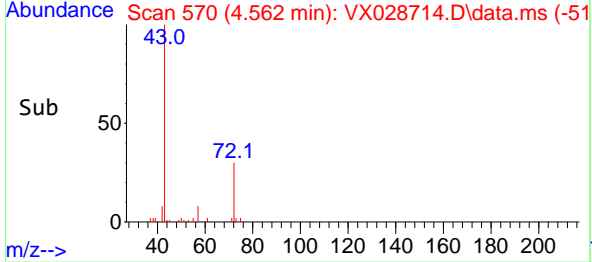
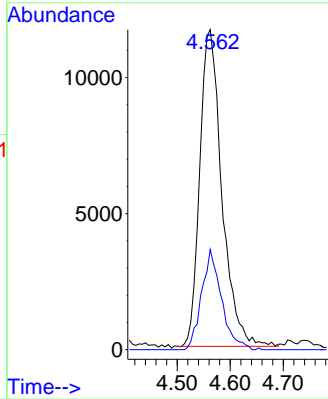
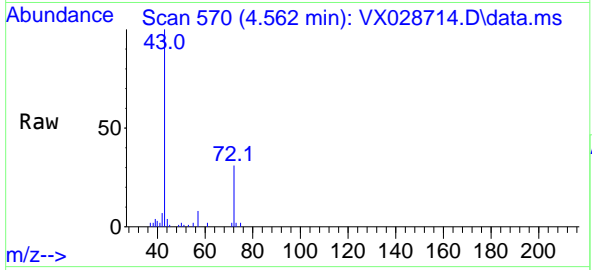




#25
 2-Butanone
 Concen: 15.645 ug/l
 RT: 4.562 min Scan# 51
 Delta R.T. 0.012 min
 Lab File: VX028714.D
 Acq: 14 May 2022 06:04

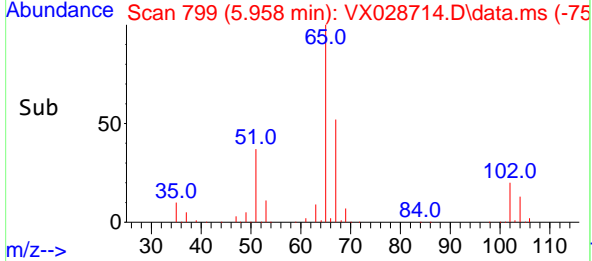
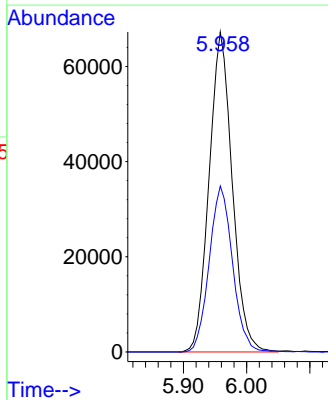
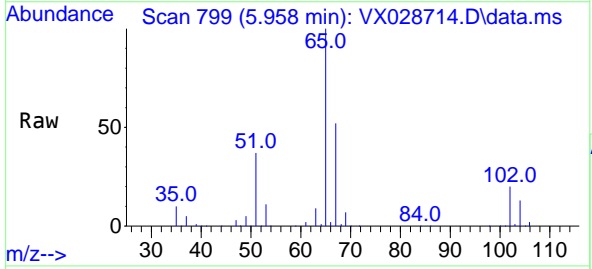
Instrument :
 MSVOA_X
 ClientSampleId :
 BUR-1144

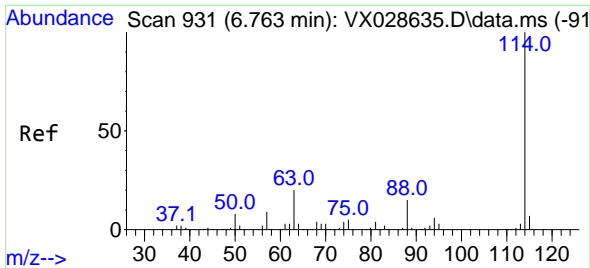
Tgt Ion: 43 Resp: 33647
 Ion Ratio Lower Upper
 43 100
 72 31.6 24.4 36.6



#33
 1,2-Dichloroethane-d4
 Concen: 53.445 ug/l
 RT: 5.958 min Scan# 799
 Delta R.T. 0.000 min
 Lab File: VX028714.D
 Acq: 14 May 2022 06:04

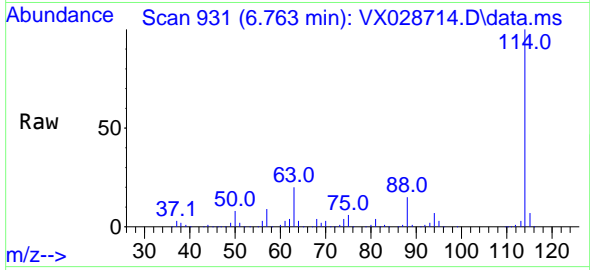
Tgt Ion: 65 Resp: 170627
 Ion Ratio Lower Upper
 65 100
 67 52.4 0.0 107.4



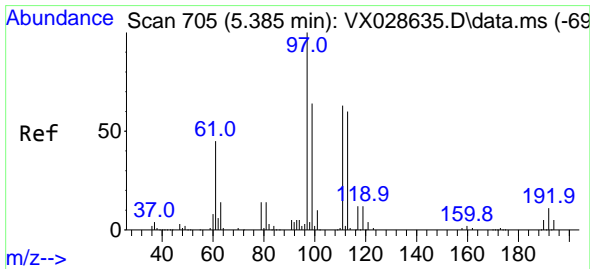
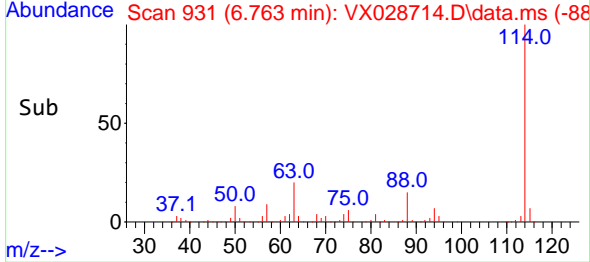
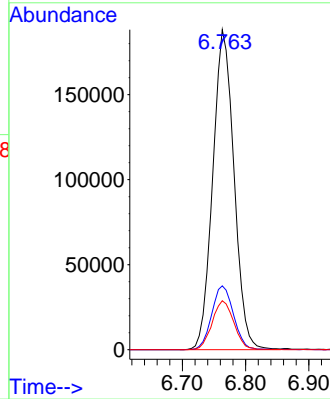


#34
 1,4-Difluorobenzene
 Concen: 50.000 ug/l
 RT: 6.763 min Scan# 91
 Delta R.T. 0.000 min
 Lab File: VX028714.D
 Acq: 14 May 2022 06:04

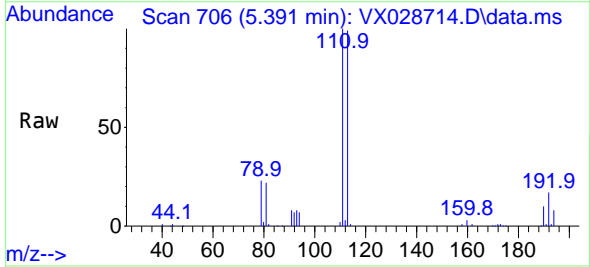
Instrument :
 MSVOA_X
 ClientSampleId :
 BUR-1144



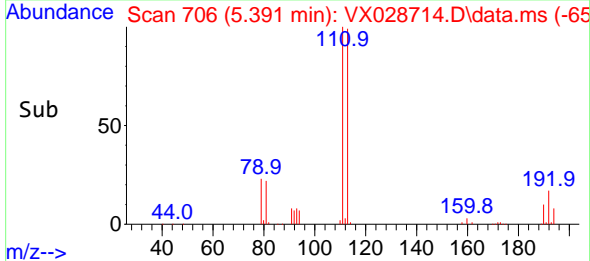
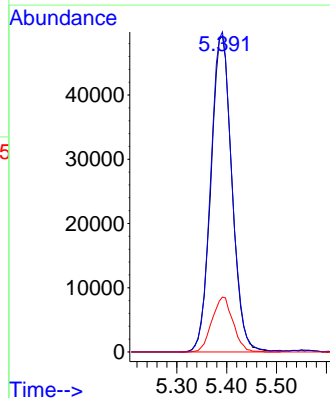
Tgt Ion:114 Resp: 438555
 Ion Ratio Lower Upper
 114 100
 63 20.0 0.0 36.8
 88 15.3 0.0 32.4

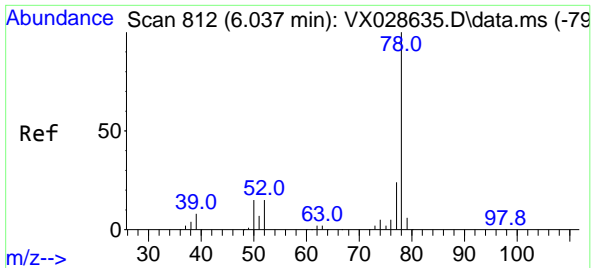


#35
 Dibromofluoromethane
 Concen: 50.069 ug/l
 RT: 5.391 min Scan# 706
 Delta R.T. 0.006 min
 Lab File: VX028714.D
 Acq: 14 May 2022 06:04



Tgt Ion:113 Resp: 143865
 Ion Ratio Lower Upper
 113 100
 111 101.5 82.8 124.2
 192 17.4 16.9 25.3

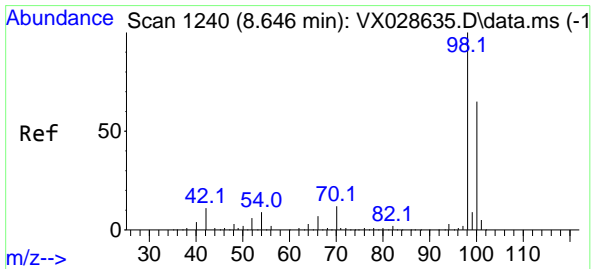
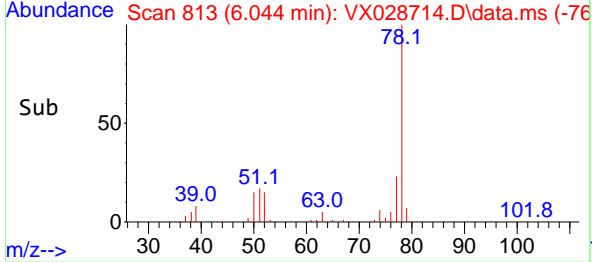
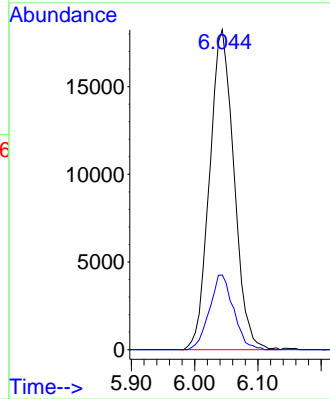
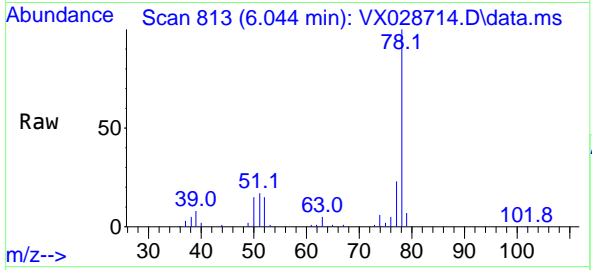




#40
Benzene
Concen: 3.943 ug/l
RT: 6.044 min Scan# 812
Delta R.T. 0.007 min
Lab File: VX028714.D
Acq: 14 May 2022 06:04

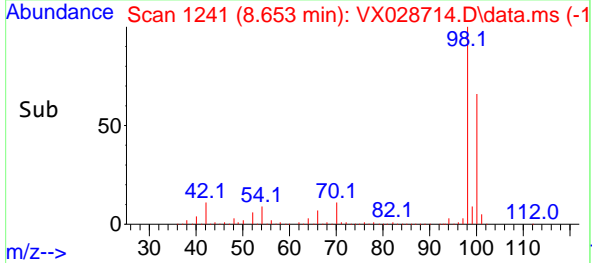
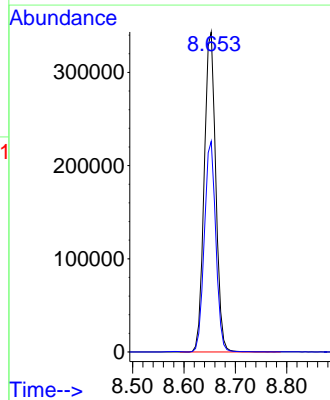
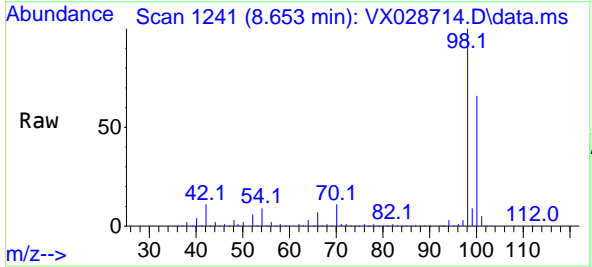
Instrument : MSVOA_X
ClientSampleId : BUR-1144

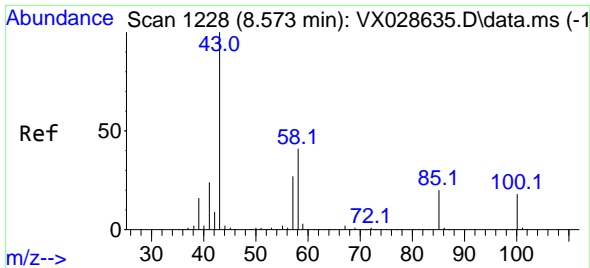
Tgt Ion: 78 Resp: 48907
Ion Ratio Lower Upper
78 100
77 23.4 19.3 28.9



#50
Toluene-d8
Concen: 49.273 ug/l
RT: 8.653 min Scan# 1241
Delta R.T. 0.007 min
Lab File: VX028714.D
Acq: 14 May 2022 06:04

Tgt Ion: 98 Resp: 533778
Ion Ratio Lower Upper
98 100
100 65.5 52.6 78.8

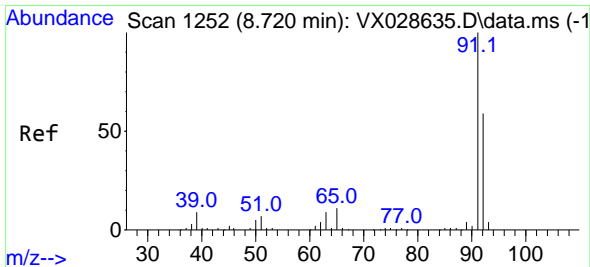
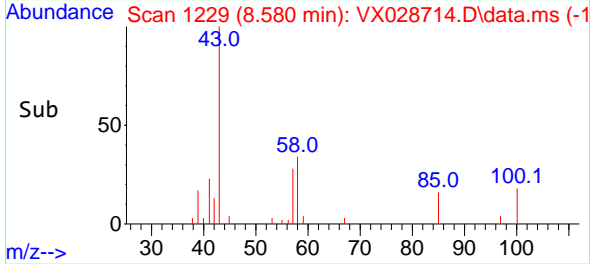
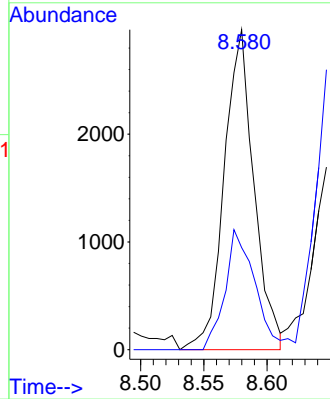
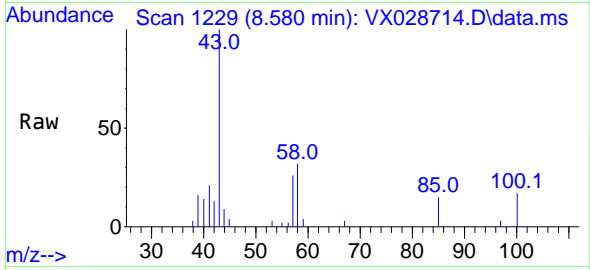




#51
 4-Methyl-2-Pentanone
 Concen: 1.047 ug/l
 RT: 8.580 min Scan# 11
 Delta R.T. 0.007 min
 Lab File: VX028714.D
 Acq: 14 May 2022 06:04

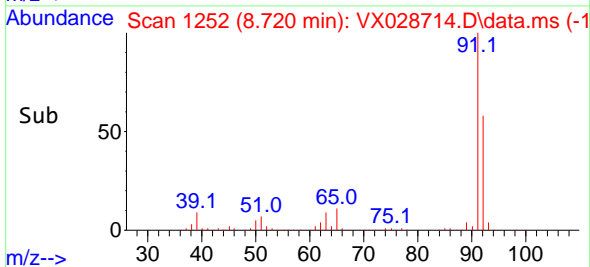
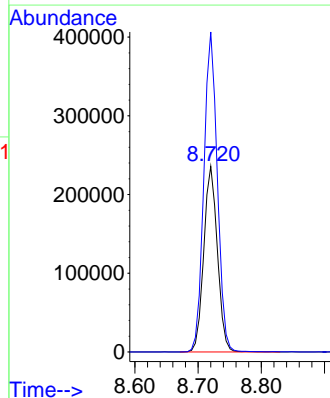
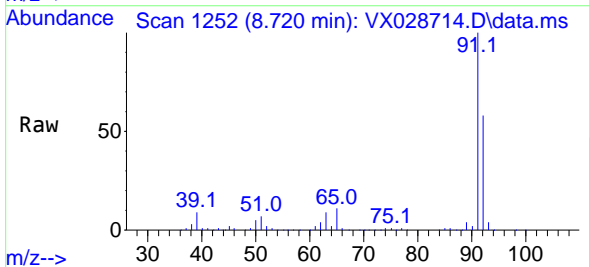
Instrument :
 MSVOA_X
 ClientSampleId :
 BUR-1144

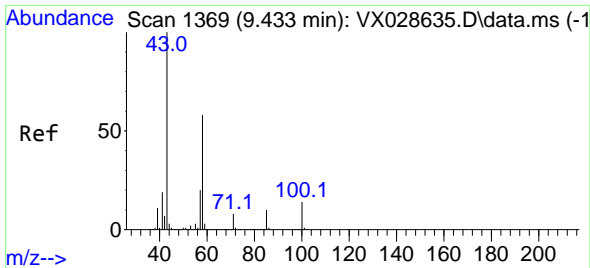
Tgt Ion: 43 Resp: 4865
 Ion Ratio Lower Upper
 43 100
 58 37.2 36.1 54.1



#52
 Toluene
 Concen: 44.357 ug/l
 RT: 8.720 min Scan# 1252
 Delta R.T. 0.000 min
 Lab File: VX028714.D
 Acq: 14 May 2022 06:04

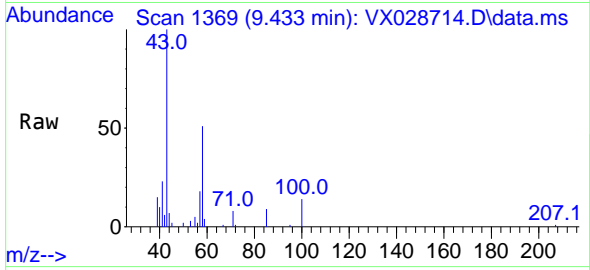
Tgt Ion: 92 Resp: 353913
 Ion Ratio Lower Upper
 92 100
 91 170.9 137.5 206.3



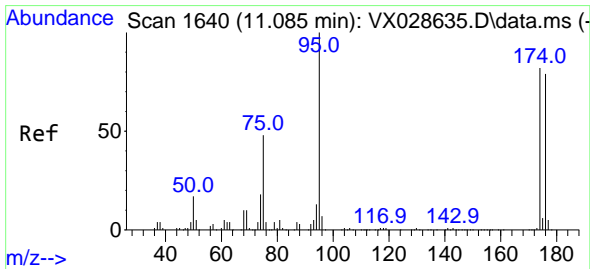
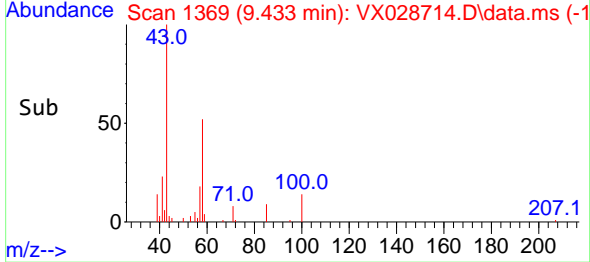
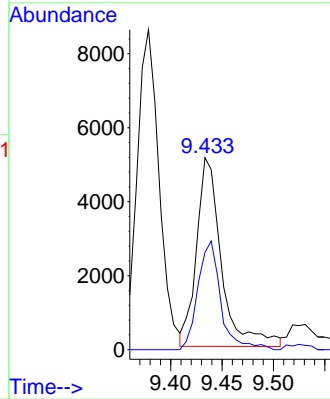


#59
 2-Hexanone
 Concen: 2.395 ug/l
 RT: 9.433 min Scan# 11
 Delta R.T. 0.000 min
 Lab File: VX028714.D
 Acq: 14 May 2022 06:04

Instrument :
 MSVOA_X
 ClientSampleId :
 BUR-1144

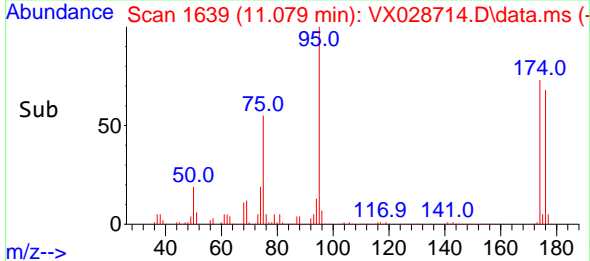
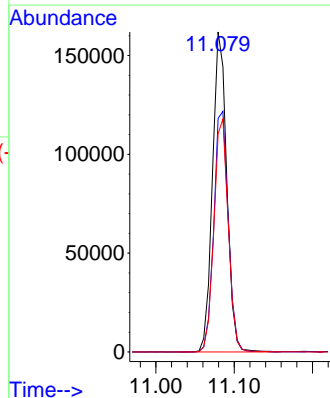
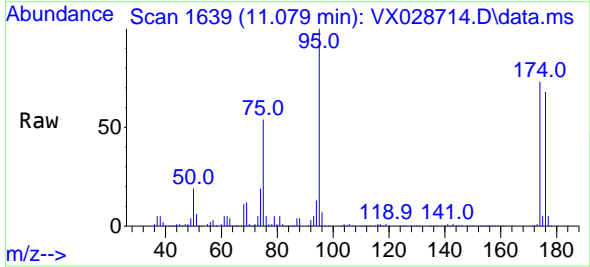


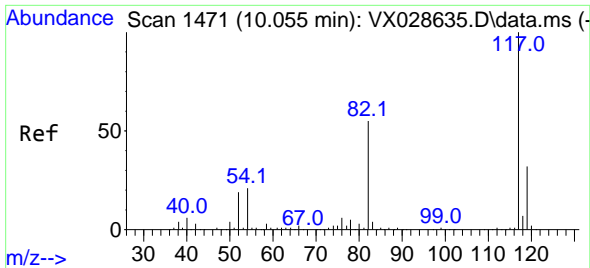
Tgt Ion: 43 Resp: 8643
 Ion Ratio Lower Upper
 43 100
 58 52.6 31.9 95.7



#62
 4-Bromofluorobenzene
 Concen: 50.450 ug/l
 RT: 11.079 min Scan# 1639
 Delta R.T. -0.006 min
 Lab File: VX028714.D
 Acq: 14 May 2022 06:04

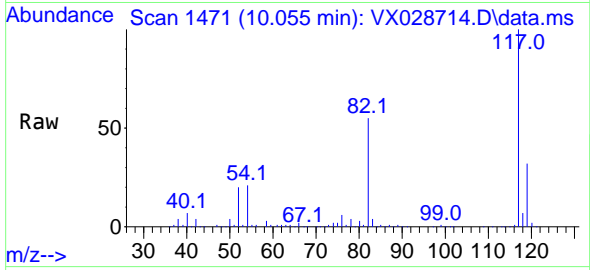
Tgt Ion: 95 Resp: 204130
 Ion Ratio Lower Upper
 95 100
 174 76.3 0.0 163.0
 176 73.2 0.0 155.0



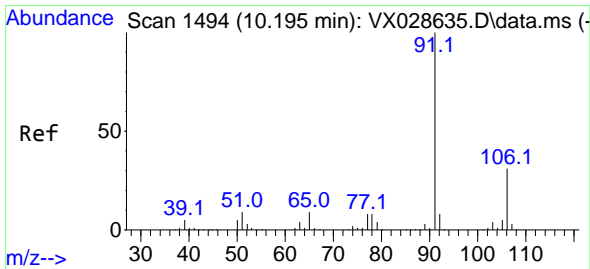
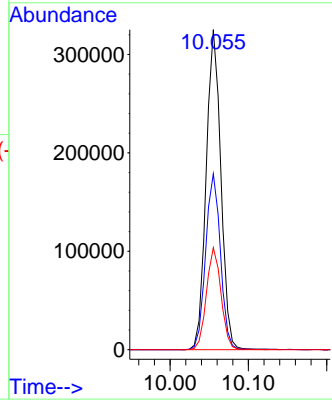
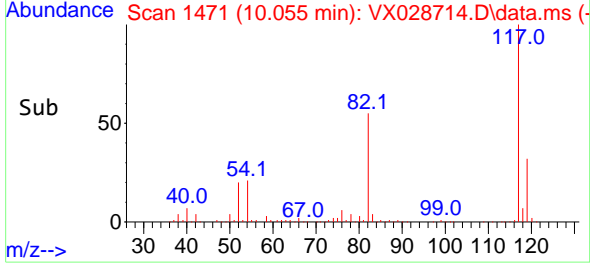


#63
 Chlorobenzene-d5
 Concen: 50.000 ug/l
 RT: 10.055 min Scan# 1471
 Delta R.T. 0.000 min
 Lab File: VX028714.D
 Acq: 14 May 2022 06:04

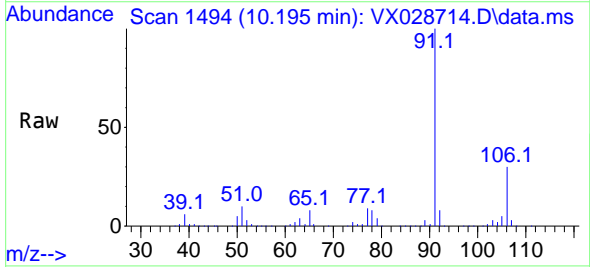
Instrument :
 MSVOA_X
 ClientSampleId :
 BUR-1144



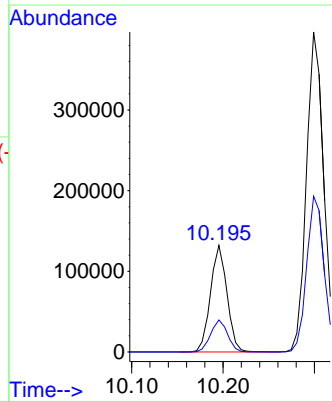
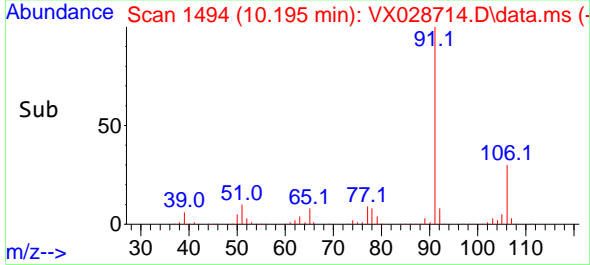
Tgt Ion:117 Resp: 422541
 Ion Ratio Lower Upper
 117 100
 82 55.0 41.8 62.8
 119 31.9 24.8 37.2

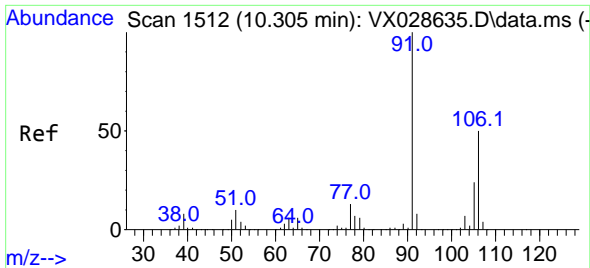


#67
 Ethyl Benzene
 Concen: 10.302 ug/l
 RT: 10.195 min Scan# 1494
 Delta R.T. 0.000 min
 Lab File: VX028714.D
 Acq: 14 May 2022 06:04



Tgt Ion: 91 Resp: 165521
 Ion Ratio Lower Upper
 91 100
 106 30.0 24.6 36.8

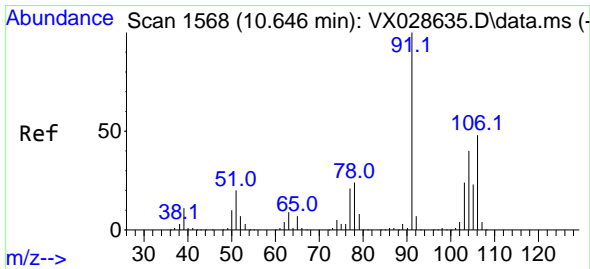
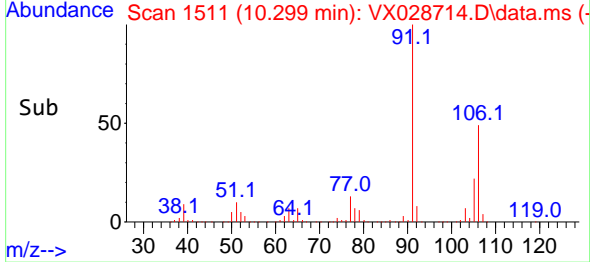
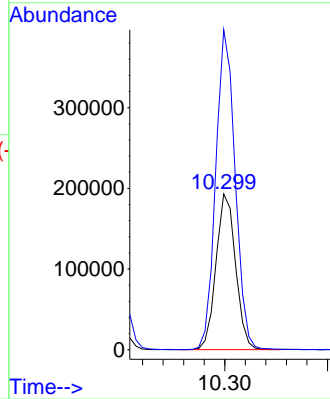
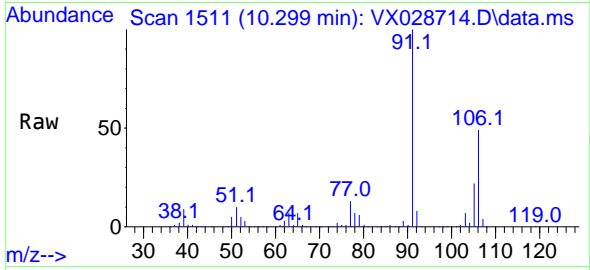




#68
 m/p-Xylenes
 Concen: 40.738 ug/l
 RT: 10.299 min Scan# 1511
 Delta R.T. -0.006 min
 Lab File: VX028714.D
 Acq: 14 May 2022 06:04

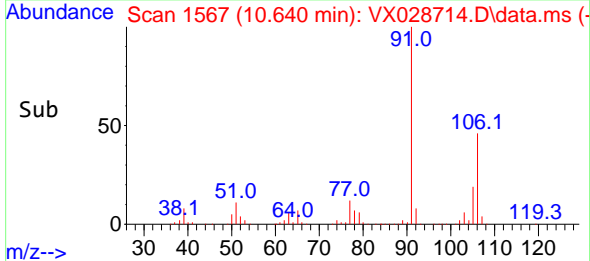
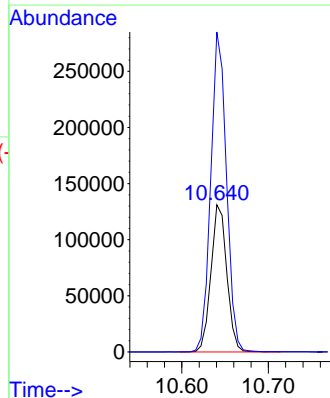
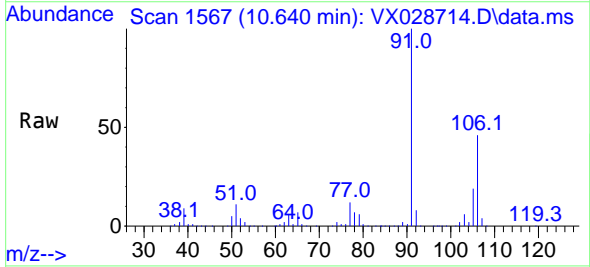
Instrument :
 MSVOA_X
 ClientSampleId :
 BUR-1144

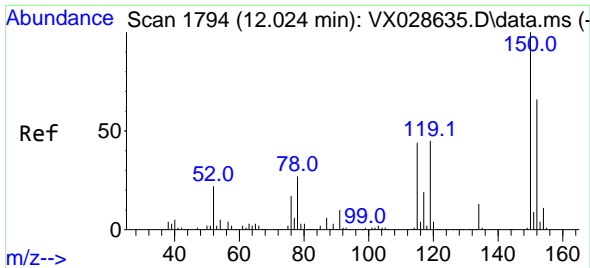
Tgt Ion:106 Resp: 254831
 Ion Ratio Lower Upper
 106 100
 91 203.8 160.4 240.6



#69
 o-Xylene
 Concen: 27.070 ug/l
 RT: 10.640 min Scan# 1567
 Delta R.T. -0.006 min
 Lab File: VX028714.D
 Acq: 14 May 2022 06:04

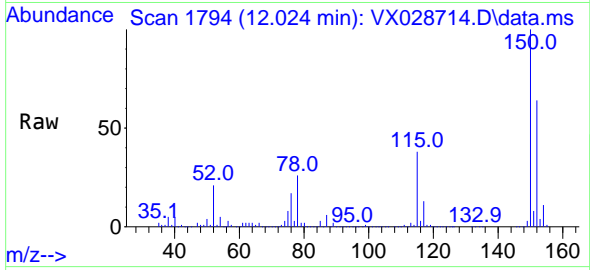
Tgt Ion:106 Resp: 166717
 Ion Ratio Lower Upper
 106 100
 91 215.6 106.1 318.1



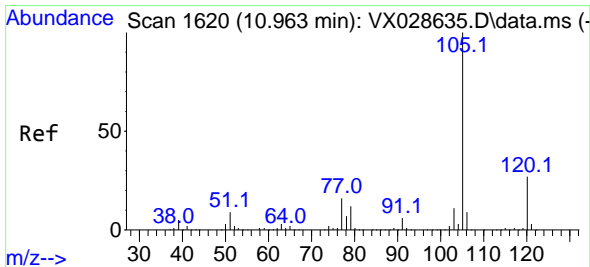
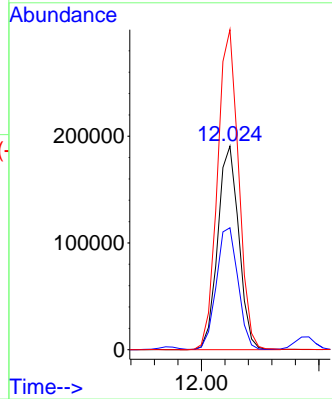
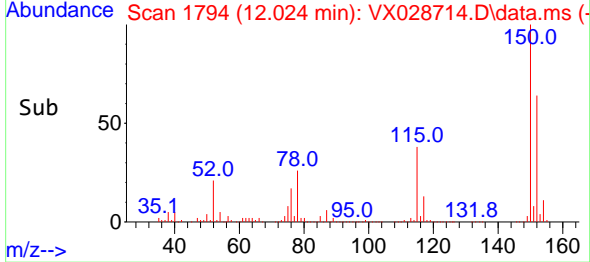


#72
 1,4-Dichlorobenzene-d4
 Concen: 50.000 ug/l
 RT: 12.024 min Scan# 11
 Delta R.T. 0.000 min
 Lab File: VX028714.D
 Acq: 14 May 2022 06:04

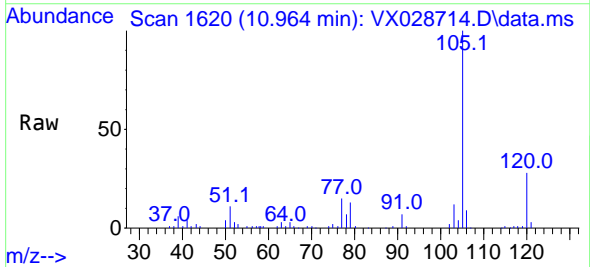
Instrument :
 MSVOA_X
 ClientSampleId :
 BUR-1144



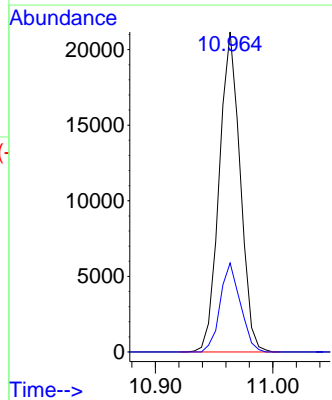
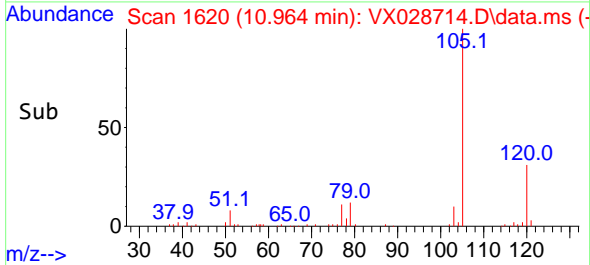
Tgt Ion:152 Resp: 237641
 Ion Ratio Lower Upper
 152 100
 115 61.5 37.5 112.7
 150 158.0 0.0 338.2

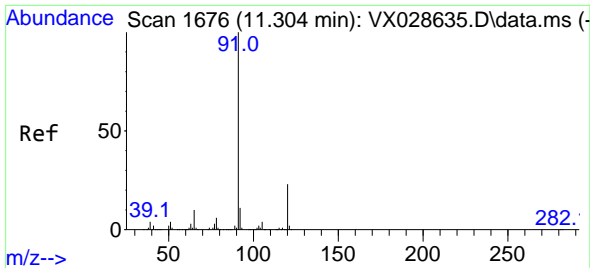


#73
 Isopropylbenzene
 Concen: 1.456 ug/l
 RT: 10.964 min Scan# 1620
 Delta R.T. 0.001 min
 Lab File: VX028714.D
 Acq: 14 May 2022 06:04



Tgt Ion:105 Resp: 26236
 Ion Ratio Lower Upper
 105 100
 120 26.8 13.5 40.5

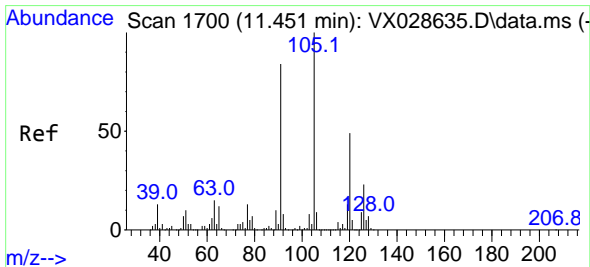
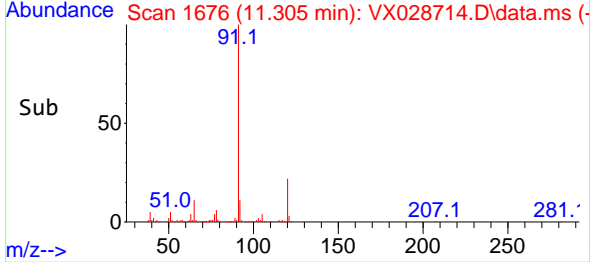
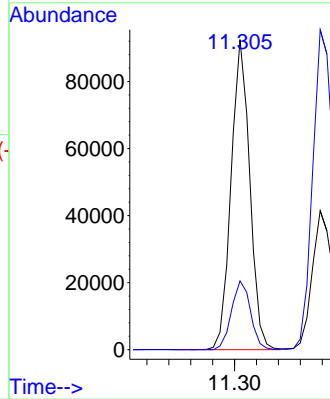
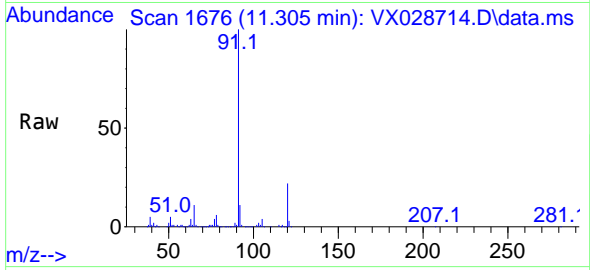




#78
 n-propylbenzene
 Concen: 5.231 ug/l
 RT: 11.305 min Scan# 1
 Delta R.T. 0.001 min
 Lab File: VX028714.D
 Acq: 14 May 2022 06:04

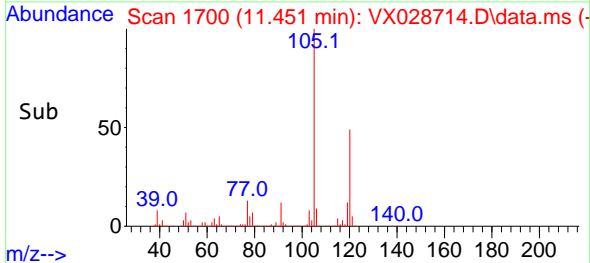
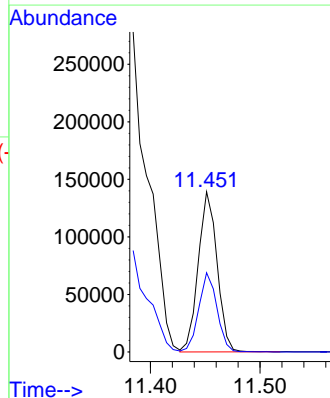
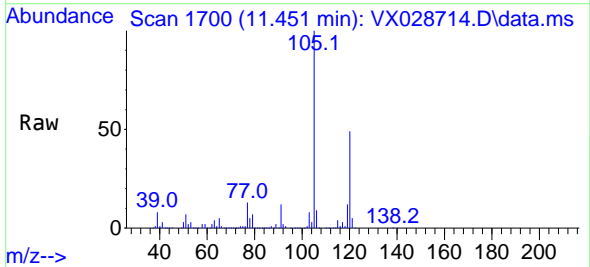
Instrument :
 MSVOA_X
 ClientSampleId :
 BUR-1144

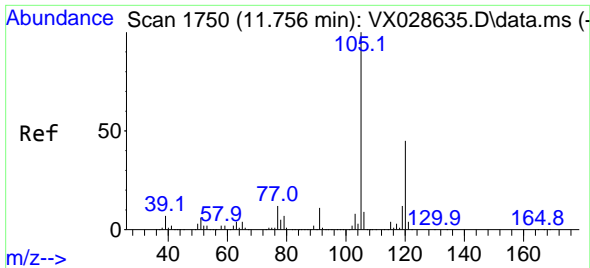
Tgt Ion: 91 Resp: 109053
 Ion Ratio Lower Upper
 91 100
 120 22.7 11.6 34.8



#80
 1,3,5-Trimethylbenzene
 Concen: 11.078 ug/l
 RT: 11.451 min Scan# 1700
 Delta R.T. 0.000 min
 Lab File: VX028714.D
 Acq: 14 May 2022 06:04

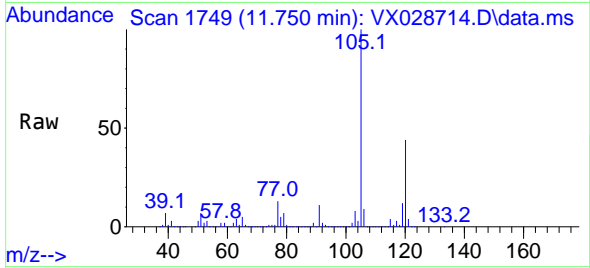
Tgt Ion: 105 Resp: 166351
 Ion Ratio Lower Upper
 105 100
 120 48.0 24.3 72.9



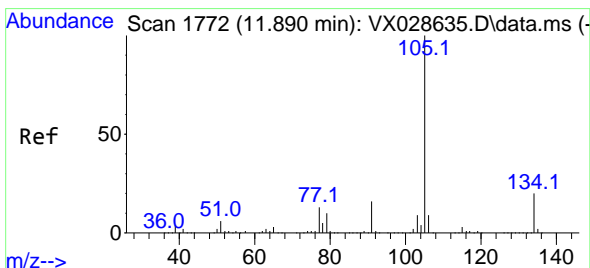
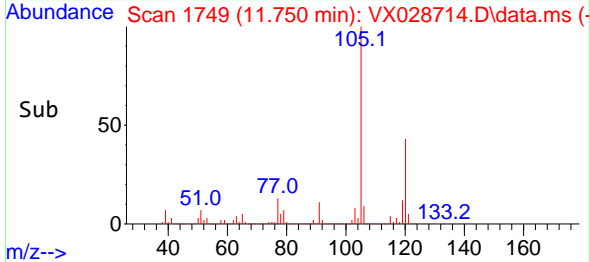
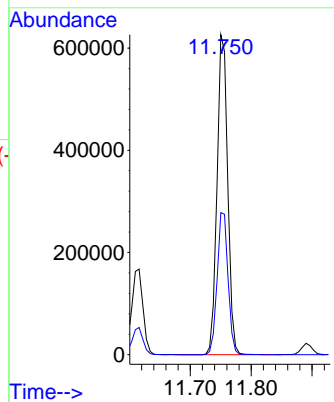


#84
 1,2,4-Trimethylbenzene
 Concen: 50.423 ug/l
 RT: 11.750 min Scan# 1750
 Delta R.T. -0.006 min
 Lab File: VX028714.D
 Acq: 14 May 2022 06:04

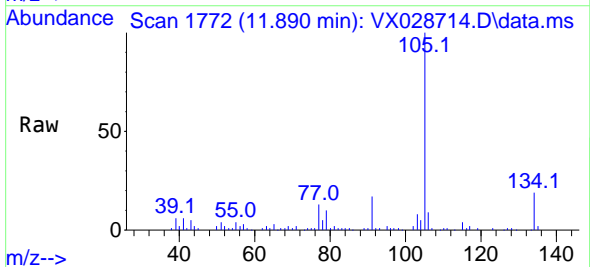
Instrument : MSVOA_X
 ClientSampleId : BUR-1144



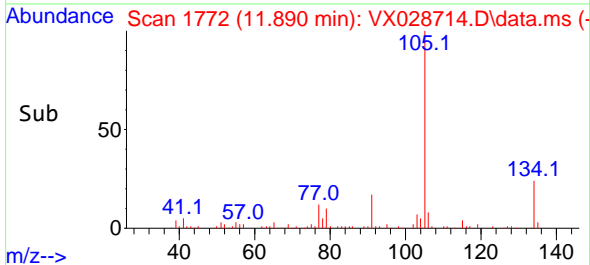
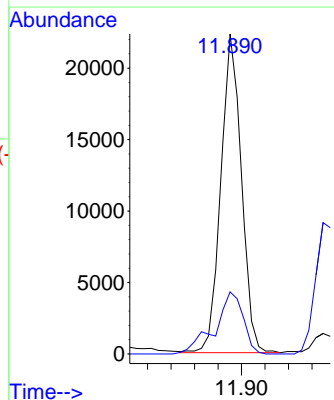
Tgt Ion:105 Resp: 759280
 Ion Ratio Lower Upper
 105 100
 120 45.4 22.6 67.8

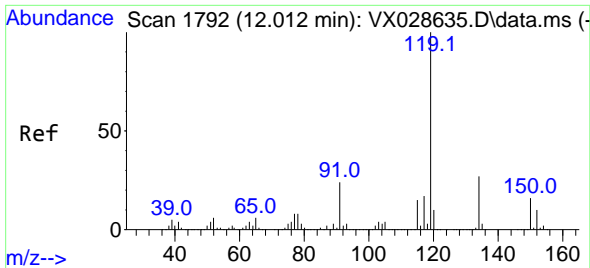


#85
 sec-Butylbenzene
 Concen: 1.512 ug/l
 RT: 11.890 min Scan# 1772
 Delta R.T. 0.000 min
 Lab File: VX028714.D
 Acq: 14 May 2022 06:04



Tgt Ion:105 Resp: 27125
 Ion Ratio Lower Upper
 105 100
 134 26.7 10.2 30.4

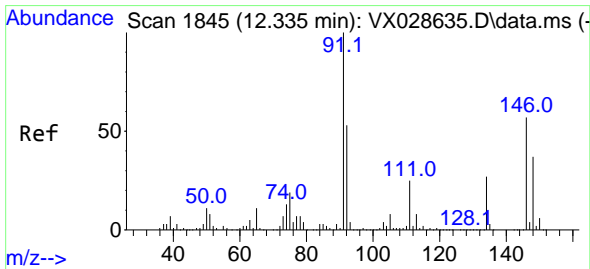
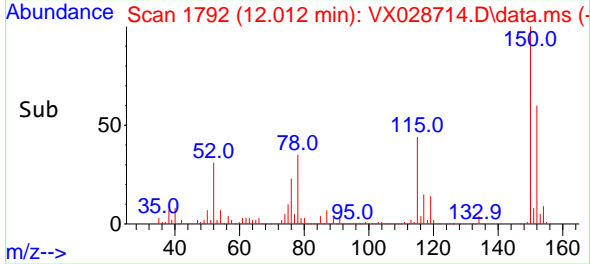
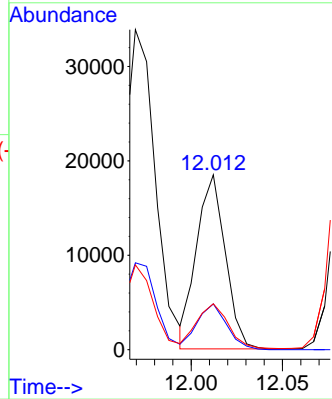
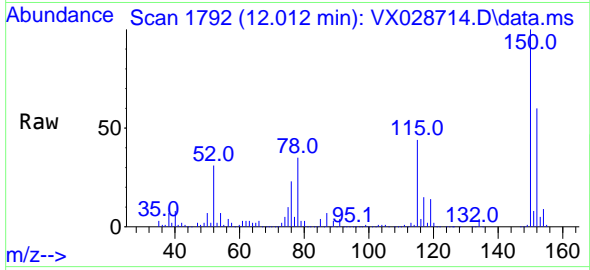




#86
 p-Isopropyltoluene
 Concen: 1.341 ug/l
 RT: 12.012 min Scan# 11
 Delta R.T. 0.000 min
 Lab File: VX028714.D
 Acq: 14 May 2022 06:04

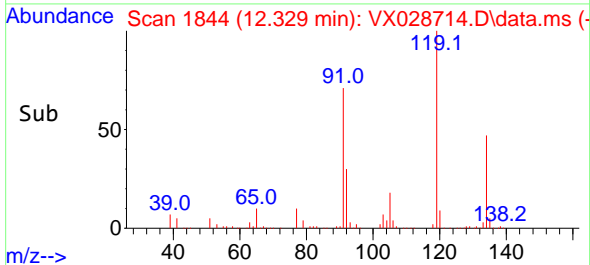
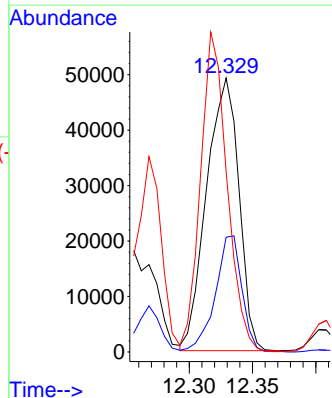
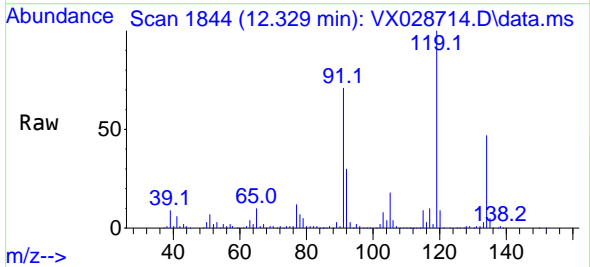
Instrument :
 MSVOA_X
 ClientSampleId :
 BUR-1144

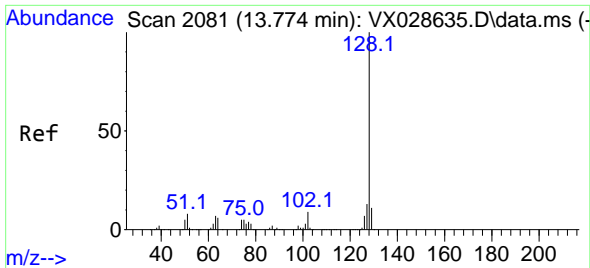
Tgt Ion:119 Resp: 20188
 Ion Ratio Lower Upper
 119 100
 134 27.2 13.0 39.0
 91 28.1 11.3 33.9



#89
 n-Butylbenzene
 Concen: 6.698 ug/l
 RT: 12.329 min Scan# 1844
 Delta R.T. -0.006 min
 Lab File: VX028714.D
 Acq: 14 May 2022 06:04

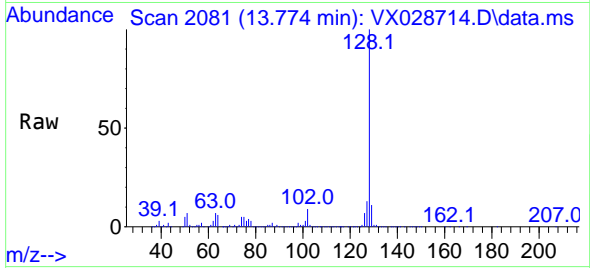
Tgt Ion: 91 Resp: 87334
 Ion Ratio Lower Upper
 91 100
 92 35.1 27.8 83.3
 134 96.4 13.3 39.8#





#95
 Naphthalene
 Concen: 17.386 ug/l
 RT: 13.774 min Scan# 20
 Delta R.T. 0.000 min
 Lab File: VX028714.D
 Acq: 14 May 2022 06:04

Instrument :
 MSVOA_X
 ClientSampleId :
 BUR-1144



Tgt Ion:128 Resp: 293592
 Ion Ratio Lower Upper
 128 100
 127 13.1 10.2 15.4
 129 11.9 8.7 13.1

