

Data Path : Z:\voasrv\HPCHEM1\MSVOA_X\Data\VX051322\
 Data File : VX028677.D
 Acq On : 13 May 2022 14:56
 Operator : JC/MD
 Sample : N2779-02
 Misc : 5.0mL/MSVOA_X/WATER
 ALS Vial : 12 Sample Multiplier: 1

Instrument :
 MSVOA_X
 ClientSampleId :
 BP-TT-MW150S1-GW-20220510

Integration Parameters: RTEINT.P

Integrator: RTE
 Smoothing : ON Filtering: 5
 Sampling : 1 Min Area: 3 % of largest Peak
 Start Thrs: 0.2 Max Peaks: 100
 Stop Thrs : 0 Peak Location: TOP

If leading or trailing edge < 100 prefer < Baseline drop else tangent >
 Peak separation: 5

Method : Z:\voasrv\HPCHEM1\MSVOA_X\Method\82X051222W.M
 Title : SW846 8260

Signal : TIC: VX028677.D\data.ms

peak #	R.T. min	first scan	max scan	last scan	PK TY	peak height	corr. area	corr. % max.	% of total
1	2.063	154	160	171	rBV	41044	68653	5.04%	0.906%
2	5.391	694	706	722	rBV	160616	472140	34.69%	6.232%
3	5.556	722	733	749	rVB	245960	695327	51.09%	9.179%
4	5.958	789	799	817	rBV2	176730	469616	34.50%	6.199%
5	6.763	921	931	949	rBV	410131	982090	72.16%	12.964%
6	7.129	982	991	1001	rBV	73747	161780	11.89%	2.136%
7	8.653	1234	1241	1249	rBV	876844	1361051	100.00%	17.966%
8	9.275	1338	1343	1351	rVB2	11219	16491	1.21%	0.218%
9	10.055	1465	1471	1486	rBV	928697	1244717	91.45%	16.431%
10	11.085	1634	1640	1654	rBV	723874	937130	68.85%	12.370%
11	12.024	1788	1794	1802	rBV	978658	1166601	85.71%	15.399%

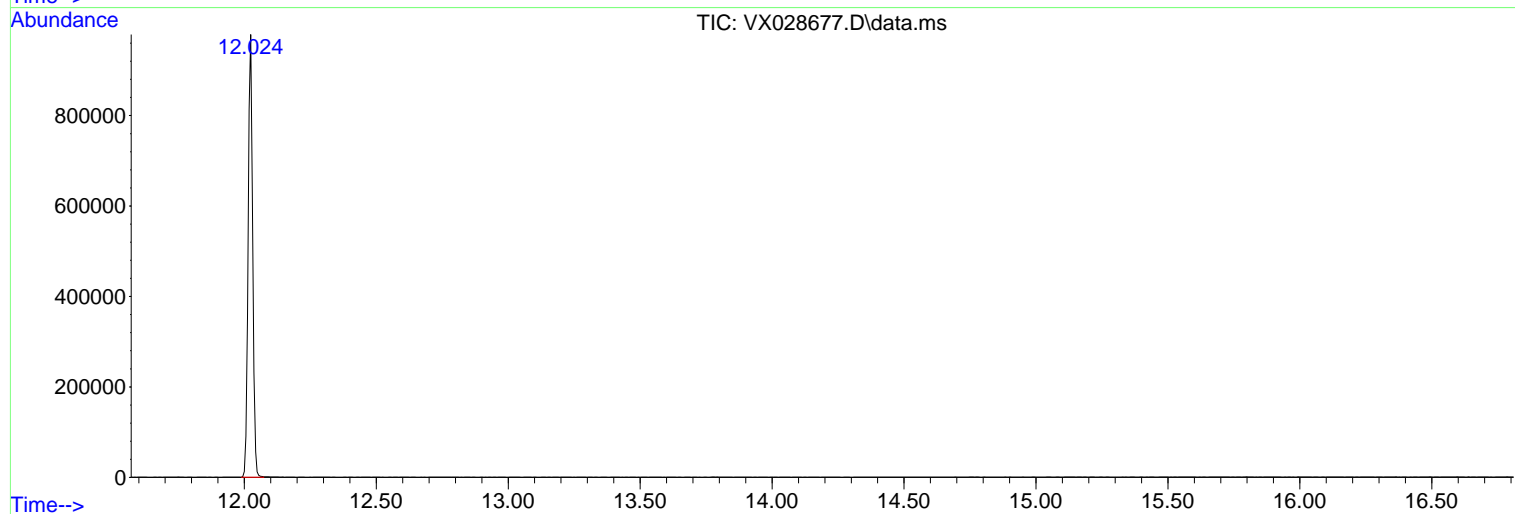
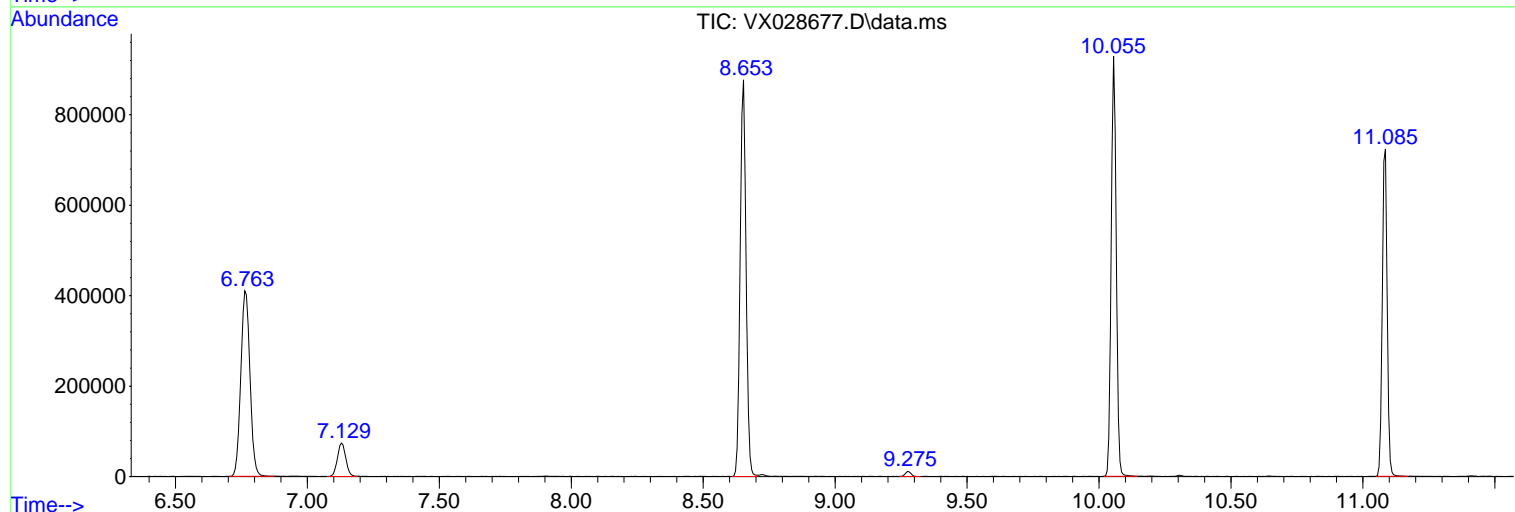
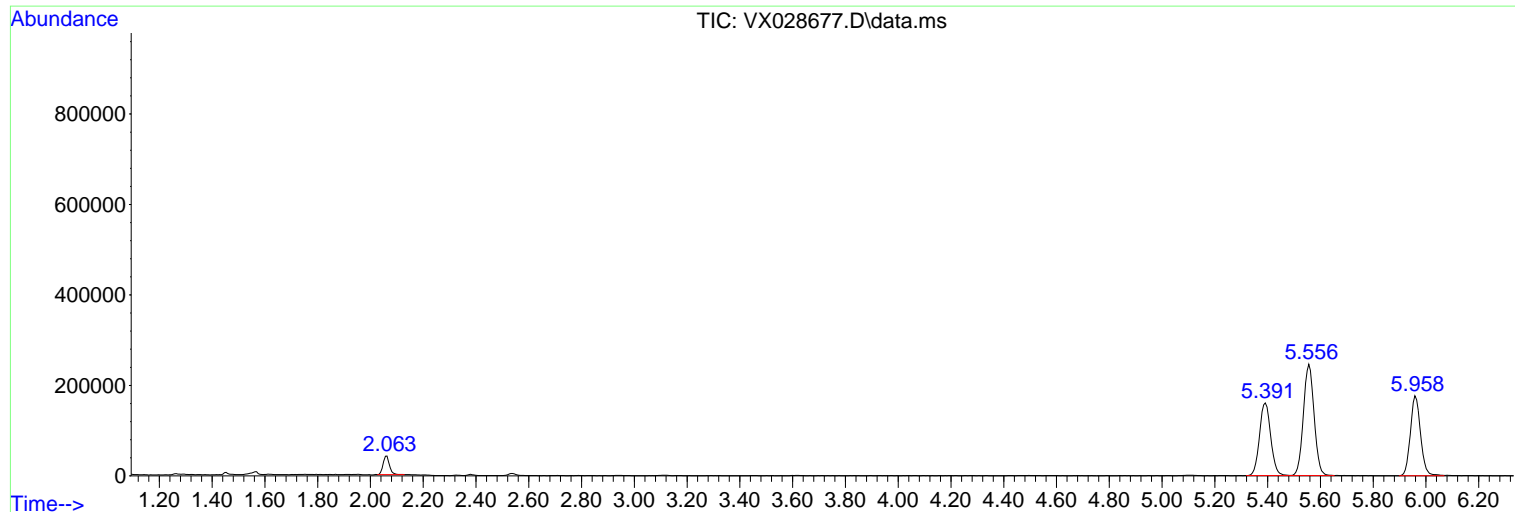
Sum of corrected areas: 7575596

Data Path : Z:\voasrv\HPCHEM1\MSVOA_X\Data\VX051322\
 Data File : VX028677.D
 Acq On : 13 May 2022 14:56
 Operator : JC/MD
 Sample : N2779-02
 Misc : 5.0mL/MSVOA_X/WATER
 ALS Vial : 12 Sample Multiplier: 1

Instrument :
 MSVOA_X
 ClientSampleId :
 BP-TT-MW150S1-GW-20220510

Quant Method : Z:\voasrv\HPCHEM1\MSVOA_X\Method\82X051222W.M
 Quant Title : SW846 8260

TIC Library : C:\Database\NIST20.L
 TIC Integration Parameters: LSCINT.P



Library Search Compound Report

Data Path : Z:\voasrv\HPCHEM1\MSVOA_X\Data\VX051322\
Data File : VX028677.D
Acq On : 13 May 2022 14:56
Operator : JC/MD
Sample : N2779-02
Misc : 5.0mL/MSVOA_X/WATER
ALS Vial : 12 Sample Multiplier: 1

Instrument :
MSVOA_X
ClientSampleId :
BP-TT-MW150S1-GW-20220510

Quant Method : Z:\voasrv\HPCHEM1\MSVOA_X\Method\82X051222W.M
Quant Title : SW846 8260

TIC Library : C:\Database\NIST20.L
TIC Integration Parameters: LSCINT.P

No Library Search Compounds Detected

Data Path : Z:\voasrv\HPCHEM1\MSVOA_X\Data\VX051322\
Data File : VX028677.D
Acq On : 13 May 2022 14:56
Operator : JC/MD
Sample : N2779-02
Misc : 5.0mL/MSVOA_X/WATER
ALS Vial : 12 Sample Multiplier: 1

Instrument :
MSVOA_X
ClientSampleId :
BP-TT-MW150S1-GW-20220510

Quant Method : Z:\voasrv\HPCHEM1\MSVOA_X\Method\82X051222W.M
Quant Title : SW846 8260

TIC Library : C:\Database\NIST20.L
TIC Integration Parameters: LSCINT.P

TIC Top Hit name	RT	EstConc	Units	Response	--Internal Standard--		
					#	RT	Resp Conc
