

Data Path : Z:\voasrv\HPCHEM1\MSVOA_X\Data\VX051322\
 Data File : VX028716.D
 Acq On : 14 May 2022 06:50
 Operator : JC/MD
 Sample : N2814-13
 Misc : 5.0mL/MSVOA_X/WATER
 ALS Vial : 53 Sample Multiplier: 1

Instrument :
 MSVOA_X
 ClientSampleId :
 HEATER-WATER

Integration Parameters: RTEINT.P

Integrator: RTE
 Smoothing : ON Filtering: 5
 Sampling : 1 Min Area: 3 % of largest Peak
 Start Thrs: 0.2 Max Peaks: 100
 Stop Thrs : 0 Peak Location: TOP

If leading or trailing edge < 100 prefer < Baseline drop else tangent >
 Peak separation: 5

Method : Z:\voasrv\HPCHEM1\MSVOA_X\Method\82X051222W.M
 Title : SW846 8260

Signal : TIC: VX028716.D\data.ms

peak #	R.T. min	first scan	max scan	last scan	PK TY	peak height	corr. area	corr. % max.	% of total
1	1.270	24	30	45	rBV	38735	146443	9.21%	1.649%
2	1.593	73	83	90	rVB8	21008	59131	3.72%	0.666%
3	2.946	296	305	314	rBV	14565	36715	2.31%	0.413%
4	5.391	693	706	721	rBV2	186747	548086	34.49%	6.173%
5	5.556	721	733	748	rVB	294554	831275	52.31%	9.362%
6	5.958	787	799	814	rBV	204876	540668	34.02%	6.089%
7	6.763	921	931	946	rBV	486218	1168063	73.50%	13.155%
8	8.653	1233	1241	1251	rBV	991314	1589195	100.00%	17.898%
9	10.055	1465	1471	1485	rBV	1104020	1440646	90.65%	16.225%
10	11.079	1633	1639	1652	rBV	839993	1107557	69.69%	12.474%
11	12.024	1788	1794	1801	rBV	1111734	1389729	87.45%	15.651%
12	14.633	2217	2222	2236	rVB	7219	21734	1.37%	0.245%

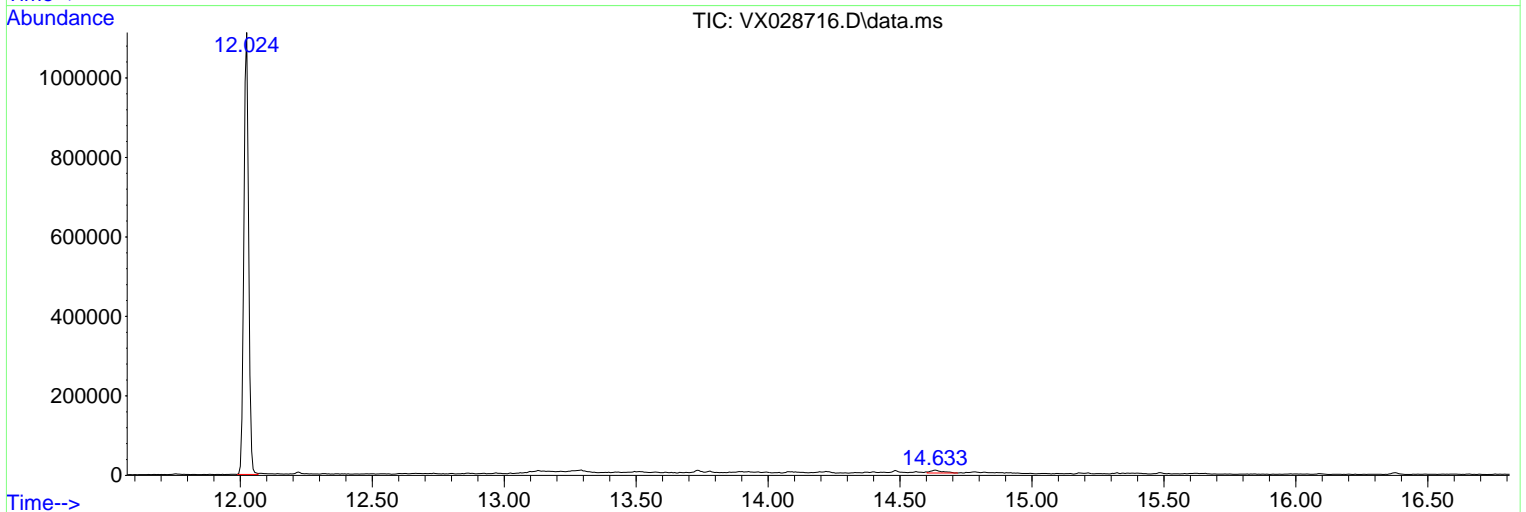
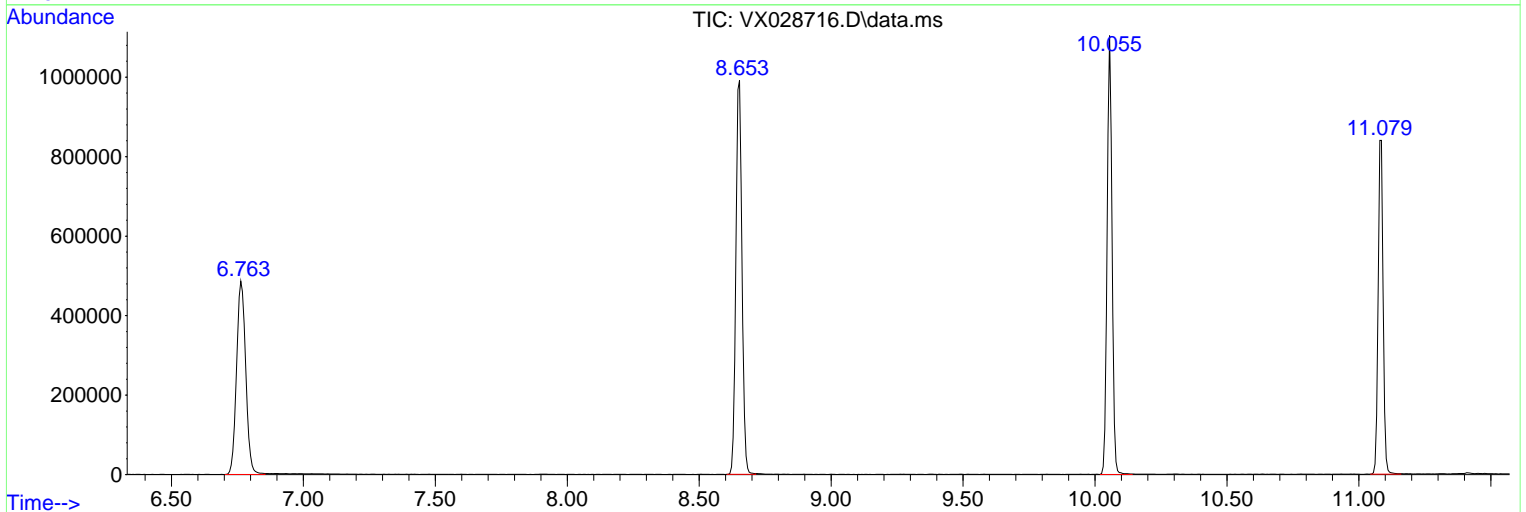
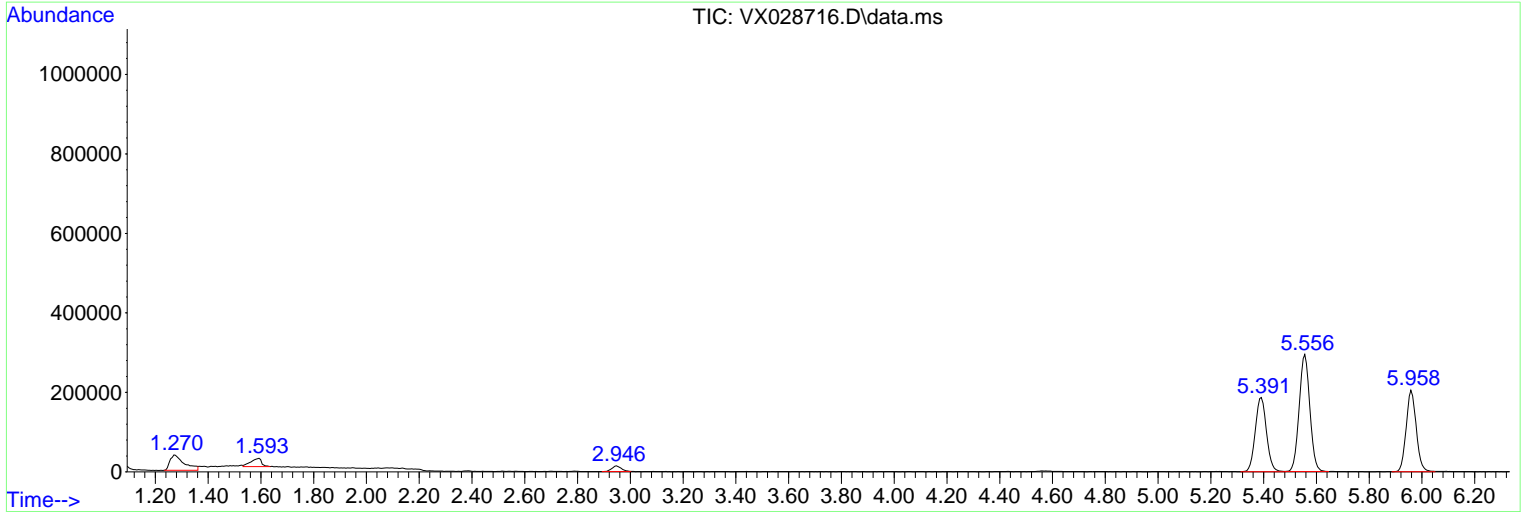
Sum of corrected areas: 8879242

Data Path : Z:\voasrv\HPCHEM1\MSVOA_X\Data\VX051322\
 Data File : VX028716.D
 Acq On : 14 May 2022 06:50
 Operator : JC/MD
 Sample : N2814-13
 Misc : 5.0mL/MSVOA_X/WATER
 ALS Vial : 53 Sample Multiplier: 1

Instrument :
 MSVOA_X
 ClientSampleId :
 HEATER-WATER

Quant Method : Z:\voasrv\HPCHEM1\MSVOA_X\Method\82X051222W.M
 Quant Title : SW846 8260

TIC Library : C:\Database\NIST20.L
 TIC Integration Parameters: LSCINT.P



Data Path : Z:\voasrv\HPCHEM1\MSVOA_X\Data\VX051322\
 Data File : VX028716.D
 Acq On : 14 May 2022 06:50
 Operator : JC/MD
 Sample : N2814-13
 Misc : 5.0mL/MSVOA_X/WATER
 ALS Vial : 53 Sample Multiplier: 1

Instrument :
 MSVOA_X
 ClientSampleId :
 HEATER-WATER

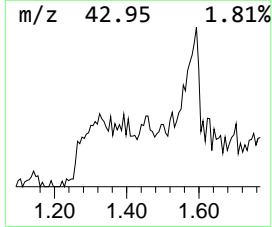
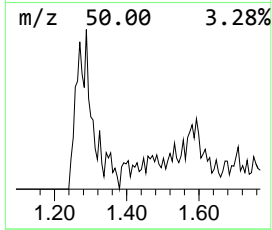
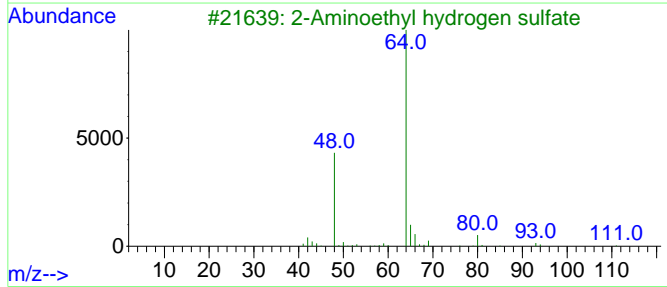
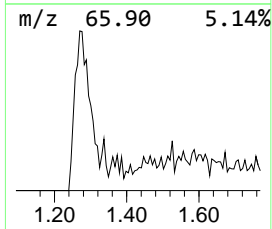
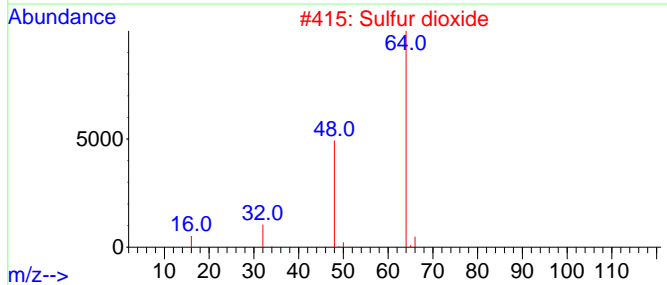
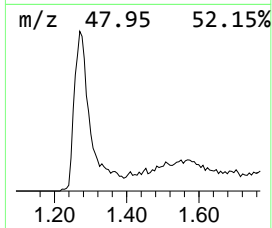
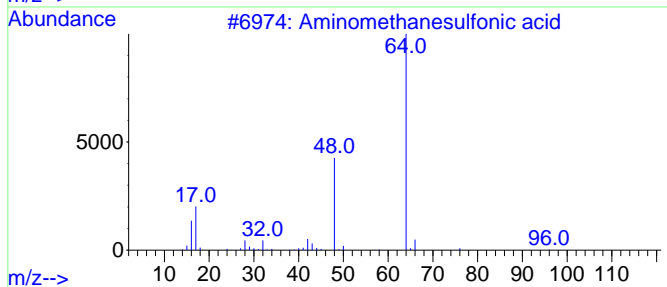
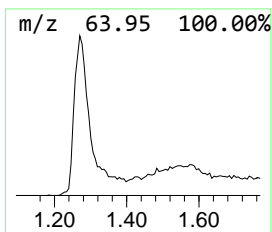
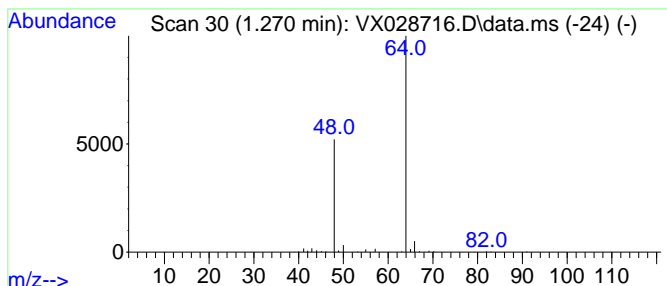
Quant Method : Z:\voasrv\HPCHEM1\MSVOA_X\Method\82X051222W.M
 Quant Title : SW846 8260

TIC Library : C:\Database\NIST20.L
 TIC Integration Parameters: LSCINT.P

 Peak Number 1 Aminomethanesulfonic acid Concentration Rank 1

R.T.	EstConc	Area	Relative to ISTD	R.T.
1.270	8.81 ug/l	146443	Pentafluorobenzene	5.556

Hit#	of	5	Tentative ID	MW	MolForm	CAS#	Qual
1			Aminomethanesulfonic acid	111	CH5NO3S	013881-91-9	83
2			Sulfur dioxide	64	O2S	007446-09-5	83
3			2-Aminoethyl hydrogen sulfate	141	C2H7NO4S	000926-39-6	74
4			L-Alanine, 3-sulfo-	169	C3H7NO5S	000498-40-8	9
5			Ethene, 1,1-difluoro-	64	C2H2F2	000075-38-7	7



Data Path : Z:\voasrv\HPCHEM1\MSVOA_X\Data\VX051322\
Data File : VX028716.D
Acq On : 14 May 2022 06:50
Operator : JC/MD
Sample : N2814-13
Misc : 5.0mL/MSVOA_X/WATER
ALS Vial : 53 Sample Multiplier: 1

Instrument :
MSVOA_X
ClientSampleId :
HEATER-WATER

Quant Method : Z:\voasrv\HPCHEM1\MSVOA_X\Method\82X051222W.M
Quant Title : SW846 8260

TIC Library : C:\Database\NIST20.L
TIC Integration Parameters: LSCINT.P

TIC Top Hit name	RT	EstConc	Units	Response	--Internal Standard--			
					#	RT	Resp	Conc
Aminomethanesul...	1.270	8.8	ug/l	146443	1	5.556	831275	50.0