

Data Path : Z:\voasrv\HPCHEM1\MSVOA\_X\Data\VX051324\  
 Data File : VX041491.D  
 Acq On : 13 May 2024 15:04  
 Operator : JC/MD  
 Sample : P2449-06  
 Misc : 5.0mL/MSVOA\_X/WATER  
 ALS Vial : 17 Sample Multiplier: 1

Instrument :  
 MSVOA\_X  
 ClientSampleId :

Quant Time: May 14 01:33:06 2024  
 Quant Method : Z:\voasrv\HPCHEM1\MSVOA\_X\Method\82X043024W.M  
 Quant Title : SW846 8260  
 QLast Update : Wed May 08 06:03:16 2024  
 Response via : Initial Calibration

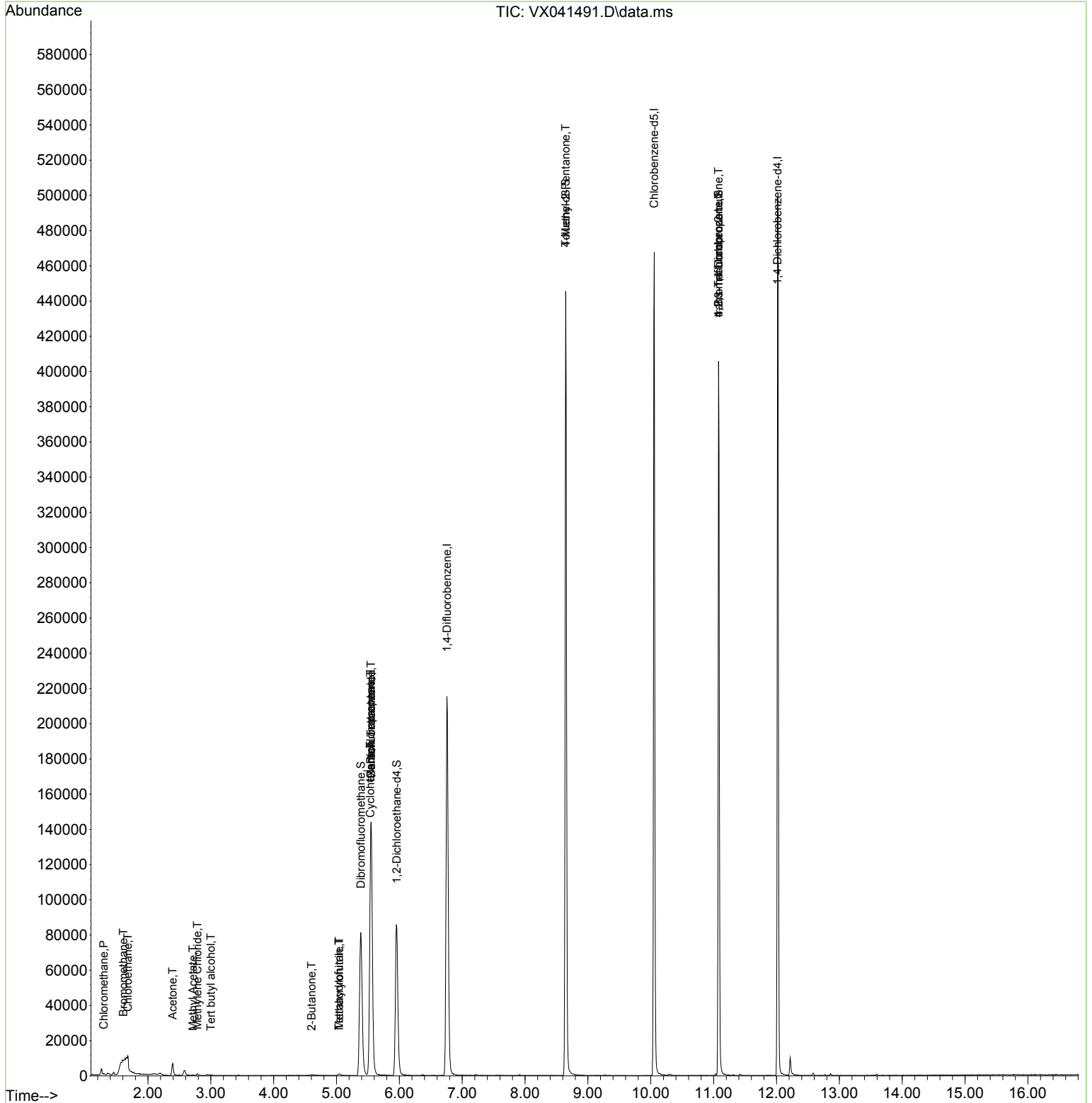
Compound	R.T.	QIon	Response	Conc	Units	Dev(Min)
-----						
Internal Standards						
1) Pentafluorobenzene	5.550	168	153256	50.000	ug/l	# 0.00
34) 1,4-Difluorobenzene	6.757	114	228372	50.000	ug/l	0.00
63) Chlorobenzene-d5	10.055	117	219561	50.000	ug/l	0.00
72) 1,4-Dichlorobenzene-d4	12.018	152	112910	50.000	ug/l	0.00
System Monitoring Compounds						
33) 1,2-Dichloroethane-d4	5.958	65	87649	52.535	ug/l	0.00
Spiked Amount	50.000	Range 78 - 117	Recovery	=	105.060%	
35) Dibromofluoromethane	5.385	113	70619	45.631	ug/l	0.00
Spiked Amount	50.000	Range 75 - 124	Recovery	=	91.260%	
50) Toluene-d8	8.647	98	263451	53.784	ug/l	0.00
Spiked Amount	50.000	Range 92 - 112	Recovery	=	107.560%	
62) 4-Bromofluorobenzene	11.079	95	100872	53.198	ug/l	0.00
Spiked Amount	50.000	Range 83 - 123	Recovery	=	106.400%	
Target Compounds						
						Qvalue
3) Chloromethane	1.295	50	366	0.281	ug/l	# 88
5) Bromomethane	1.605	94	368	0.473	ug/l	# 71
6) Chloroethane	1.679	64	192	0.333	ug/l	# 43
11) Tert butyl alcohol	3.002	59	604	1.809	ug/l	# 78
16) Acetone	2.392	43	7964	7.038	ug/l	# 99
18) Methyl Acetate	2.715	43	469	0.275	ug/l	# 75
20) Methylene Chloride	2.788	84	495	0.342	ug/l	# 77
25) 2-Butanone	4.605	43	729	0.675	ug/l	# 51
29) Tetrahydrofuran	5.038	42	823	1.165	ug/l	# 76
31) Cyclohexane	5.538	56	2553	1.268	ug/l	# 15
36) 1,1-Dichloropropene	5.544	75	9863	5.330	ug/l	# 50
38) Carbon Tetrachloride	5.550	117	13506	6.371	ug/l	# 15
41) Methacrylonitrile	5.044	41	317	0.267	ug/l	# 36
51) 4-Methyl-2-Pentanone	8.647	43	1330	0.638	ug/l	# 1
76) 1,2,3-Trichloropropane	11.079	75	50510	27.450	ug/l	# 39
81) trans-1,4-Dichloro-2-b...	11.079	75	50510	74.770	ug/l	# 5

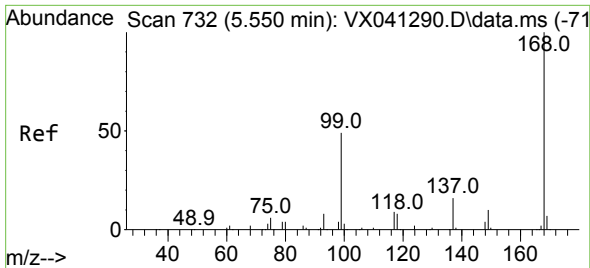
(#) = qualifier out of range (m) = manual integration (+) = signals summed

Data Path : Z:\voasrv\HPCHEM1\MSVOA\_X\Data\VX051324\  
 Data File : VX041491.D  
 Acq On : 13 May 2024 15:04  
 Operator : JC/MD  
 Sample : P2449-06  
 Misc : 5.0mL/MSVOA\_X/WATER  
 ALS Vial : 17 Sample Multiplier: 1

Instrument :  
 MSVOA\_X  
 ClientSampleId :

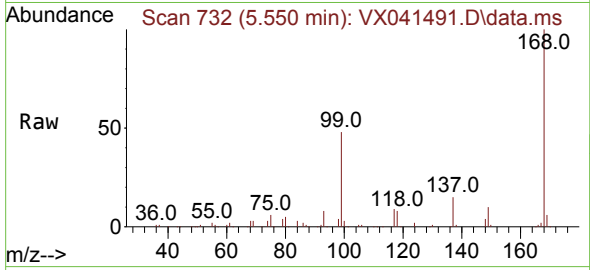
Quant Time: May 14 01:33:06 2024  
 Quant Method : Z:\voasrv\HPCHEM1\MSVOA\_X\Method\82X043024W.M  
 Quant Title : SW846 8260  
 QLast Update : Wed May 08 06:03:16 2024  
 Response via : Initial Calibration



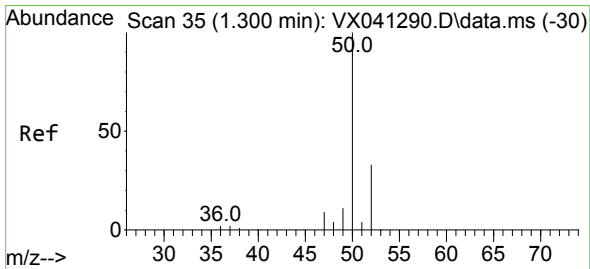
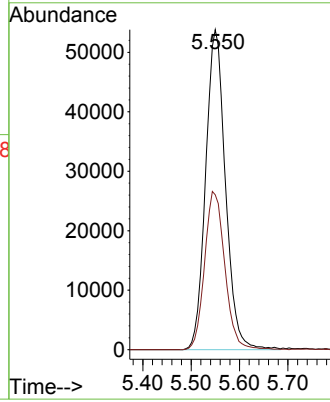
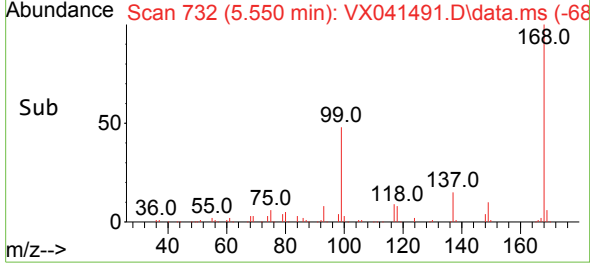


#1  
 Pentafluorobenzene  
 Concen: 50.000 ug/l  
 RT: 5.550 min Scan# 71  
 Delta R.T. -0.000 min  
 Lab File: VX041491.D  
 Acq: 13 May 2024 15:04

Instrument :  
 MSVOA\_X  
 ClientSampleId :

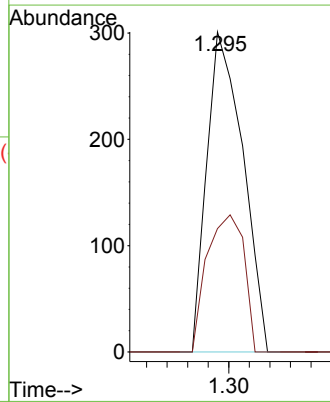
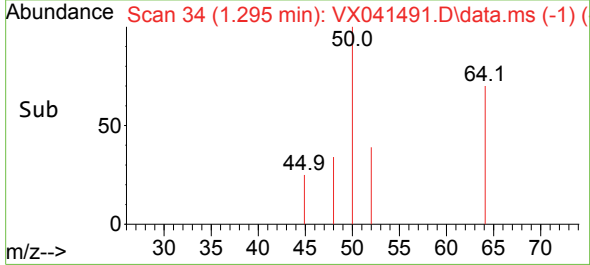
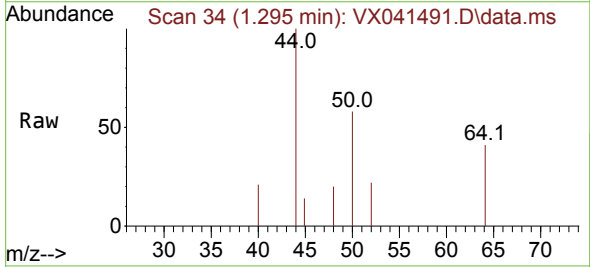


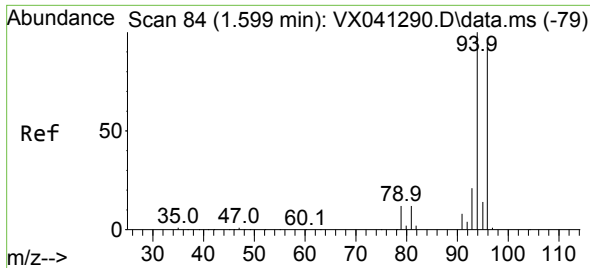
Tgt Ion:168 Resp: 153256  
 Ion Ratio Lower Upper  
 168 100  
 99 48.4 56.6 85.0#



#3  
 Chloromethane  
 Concen: 0.281 ug/l  
 RT: 1.295 min Scan# 34  
 Delta R.T. -0.006 min  
 Lab File: VX041491.D  
 Acq: 13 May 2024 15:04

Tgt Ion: 50 Resp: 366  
 Ion Ratio Lower Upper  
 50 100  
 52 38.5 25.5 38.3#

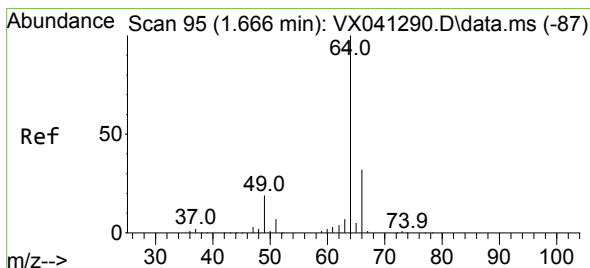
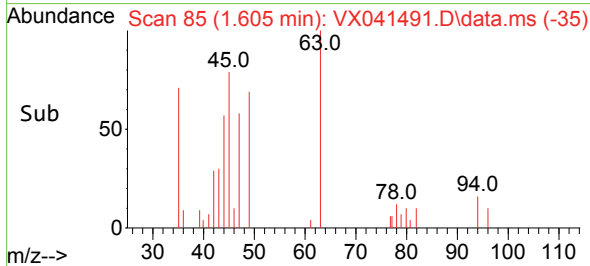
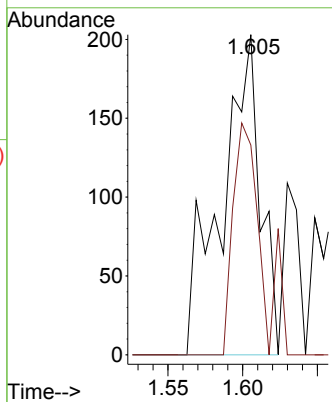
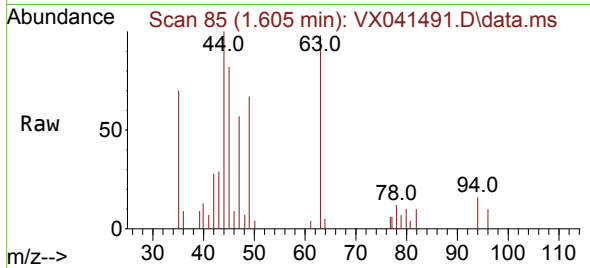




#5  
 Bromomethane  
 Concen: 0.473 ug/l  
 RT: 1.605 min Scan# 81  
 Delta R.T. 0.006 min  
 Lab File: VX041491.D  
 Acq: 13 May 2024 15:04

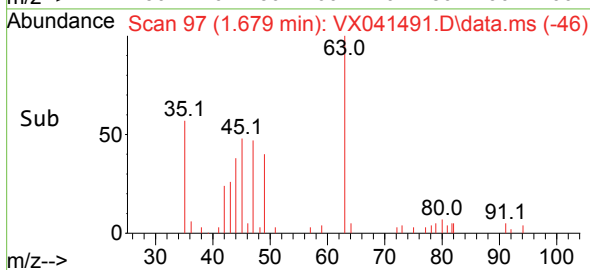
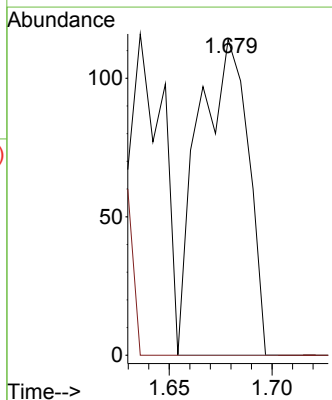
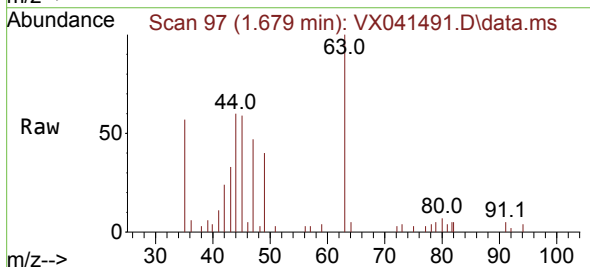
Instrument :  
 MSVOA\_X  
 ClientSampleId :

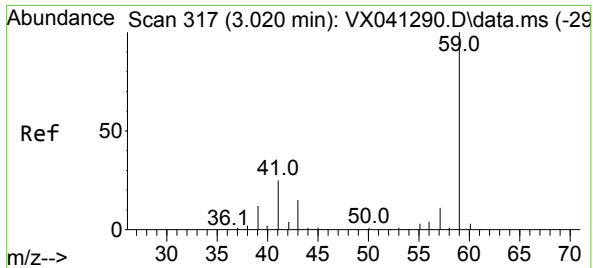
Tgt Ion: 94 Resp: 368  
 Ion Ratio Lower Upper  
 94 100  
 96 65.5 74.6 111.8#



#6  
 Chloroethane  
 Concen: 0.333 ug/l  
 RT: 1.679 min Scan# 97  
 Delta R.T. 0.012 min  
 Lab File: VX041491.D  
 Acq: 13 May 2024 15:04

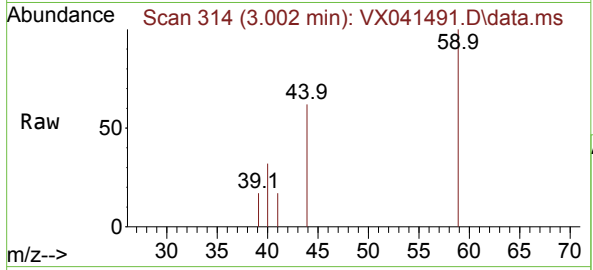
Tgt Ion: 64 Resp: 192  
 Ion Ratio Lower Upper  
 64 100  
 66 0.0 25.1 37.7#



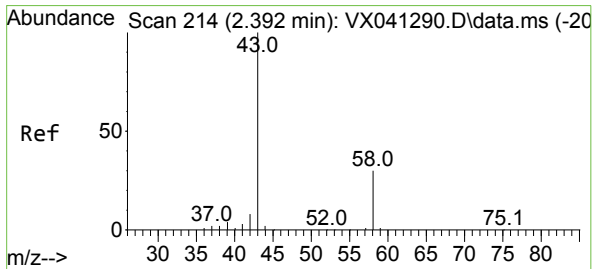
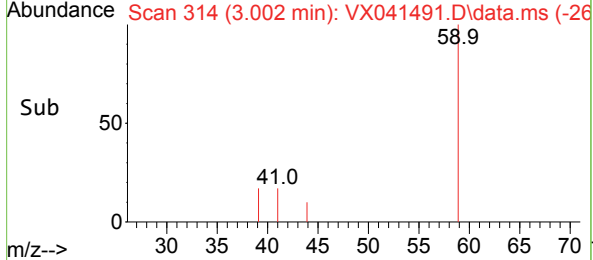
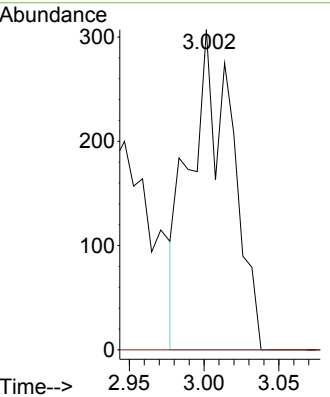


#11  
 Tert butyl alcohol  
 Concen: 1.809 ug/l  
 RT: 3.002 min Scan# 31  
 Delta R.T. -0.018 min  
 Lab File: VX041491.D  
 Acq: 13 May 2024 15:04

Instrument : MSVOA\_X  
 ClientSampleId :

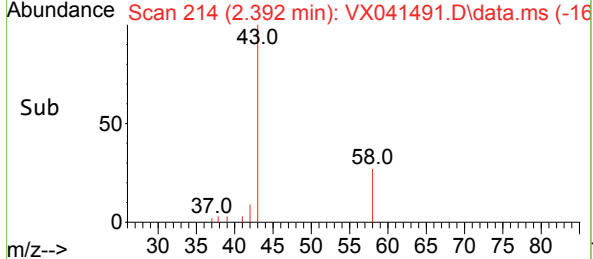
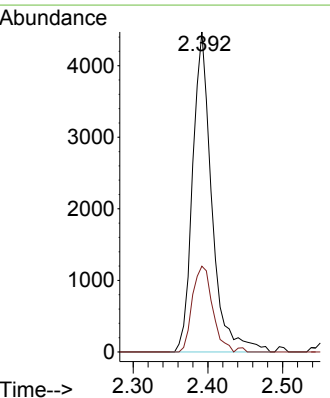
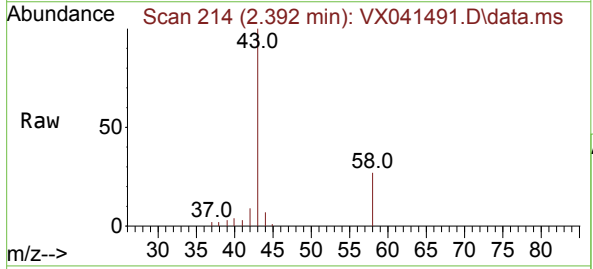


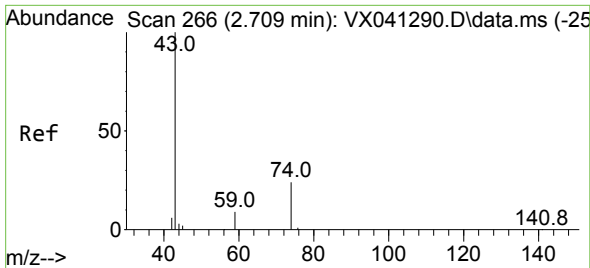
Tgt Ion: 59 Resp: 604  
 Ion Ratio Lower Upper  
 59 100  
 57 0.0 6.0 9.0#



#16  
 Acetone  
 Concen: 7.038 ug/l  
 RT: 2.392 min Scan# 214  
 Delta R.T. -0.000 min  
 Lab File: VX041491.D  
 Acq: 13 May 2024 15:04

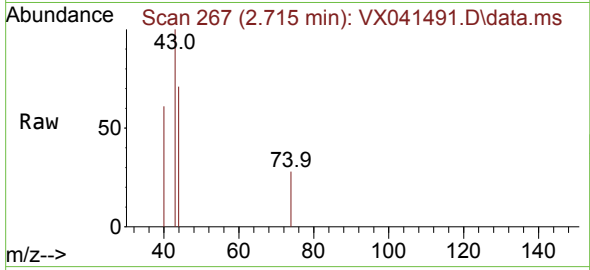
Tgt Ion: 43 Resp: 7964  
 Ion Ratio Lower Upper  
 43 100  
 58 26.8 21.9 32.9



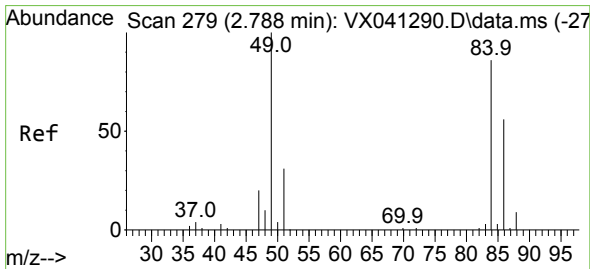
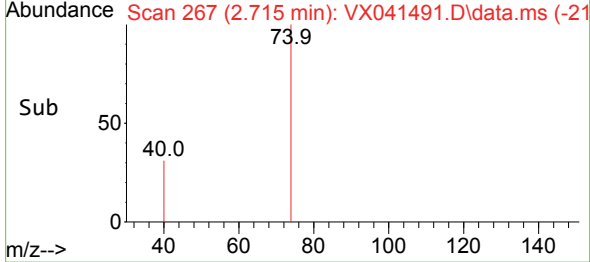
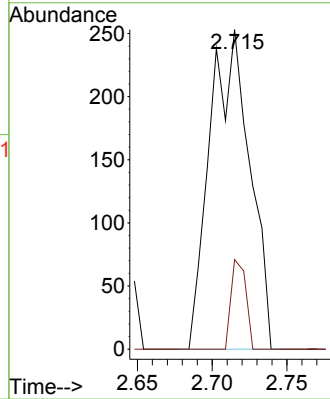


#18  
 Methyl Acetate  
 Concen: 0.275 ug/l  
 RT: 2.715 min Scan# 20  
 Delta R.T. 0.006 min  
 Lab File: VX041491.D  
 Acq: 13 May 2024 15:04

Instrument : MSVOA\_X  
 ClientSampleId :

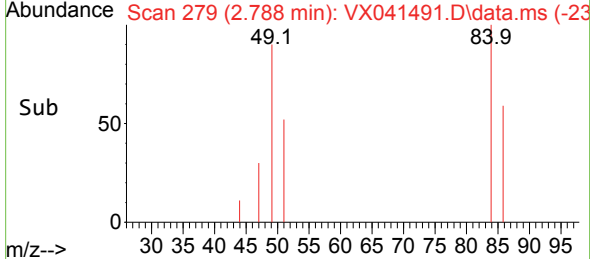
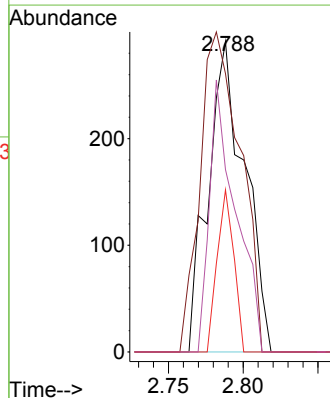
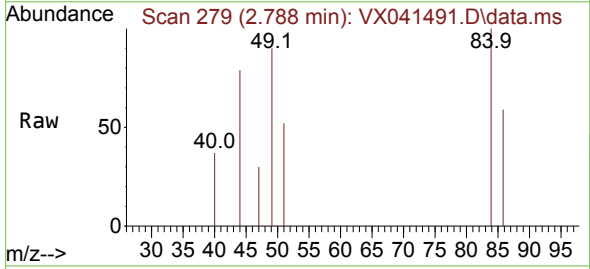


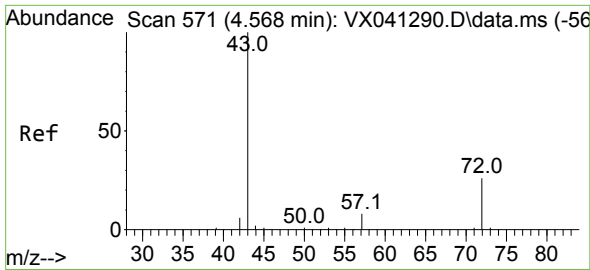
Tgt Ion: 43 Resp: 469  
 Ion Ratio Lower Upper  
 43 100  
 74 10.4 17.8 26.8#



#20  
 Methylene Chloride  
 Concen: 0.342 ug/l  
 RT: 2.788 min Scan# 279  
 Delta R.T. 0.000 min  
 Lab File: VX041491.D  
 Acq: 13 May 2024 15:04

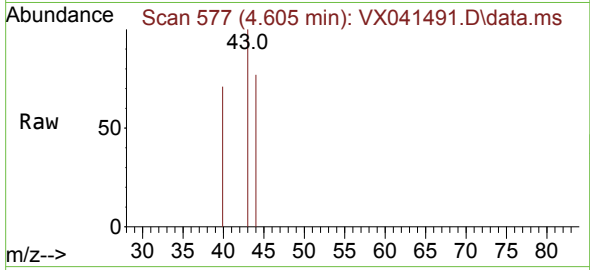
Tgt Ion: 84 Resp: 495  
 Ion Ratio Lower Upper  
 84 100  
 49 89.7 103.6 155.4#  
 51 52.2 33.8 50.6#  
 86 58.8 49.4 74.0



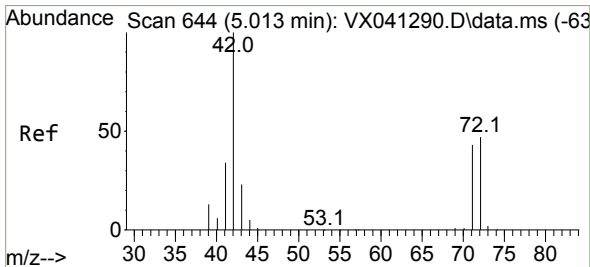
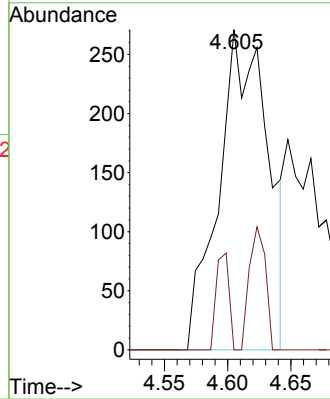
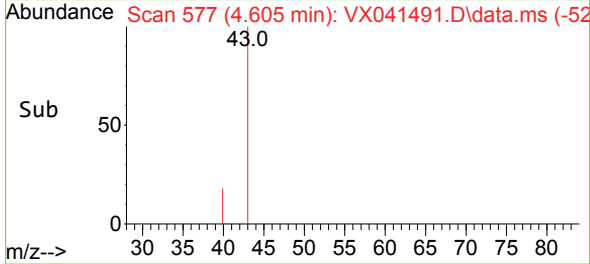


#25  
 2-Butanone  
 Concen: 0.675 ug/l  
 RT: 4.605 min Scan# 51  
 Delta R.T. 0.037 min  
 Lab File: VX041491.D  
 Acq: 13 May 2024 15:04

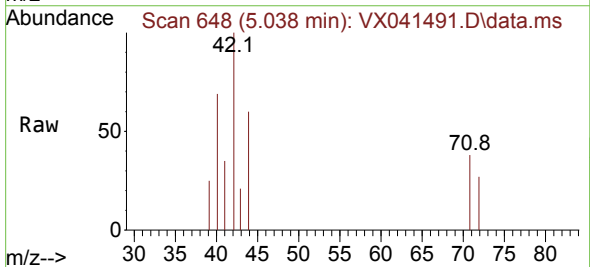
Instrument :  
 MSVOA\_X  
 ClientSampleId :



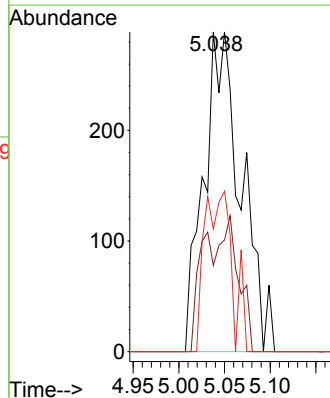
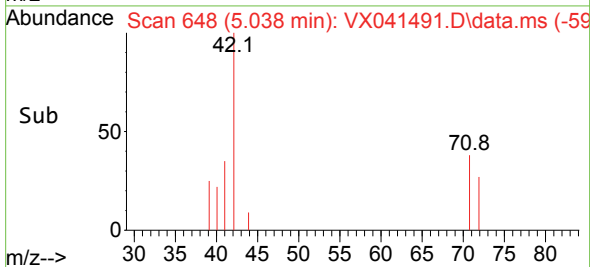
Tgt Ion: 43 Resp: 729  
 Ion Ratio Lower Upper  
 43 100  
 72 0.0 19.4 29.2#

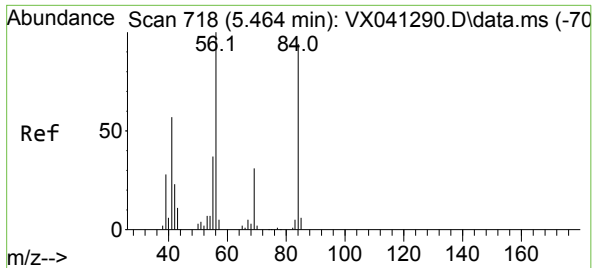


#29  
 Tetrahydrofuran  
 Concen: 1.165 ug/l  
 RT: 5.038 min Scan# 648  
 Delta R.T. 0.025 min  
 Lab File: VX041491.D  
 Acq: 13 May 2024 15:04



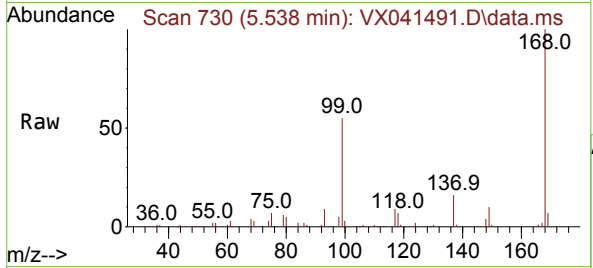
Tgt Ion: 42 Resp: 823  
 Ion Ratio Lower Upper  
 42 100  
 72 15.9 34.2 51.4#  
 71 36.8 32.2 48.2



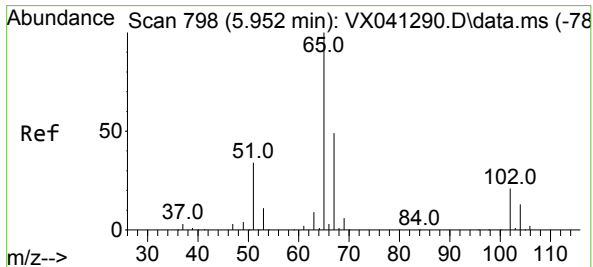
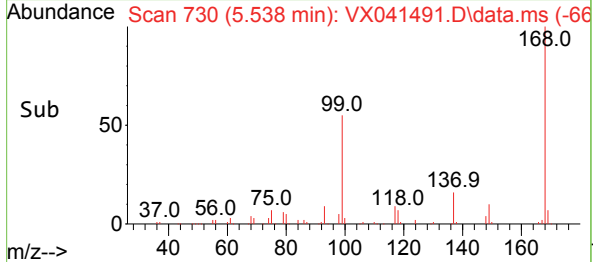
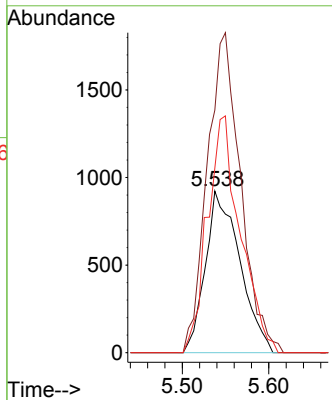


#31  
 Cyclohexane  
 Concen: 1.268 ug/l  
 RT: 5.538 min Scan# 718  
 Delta R.T. 0.073 min  
 Lab File: VX041491.D  
 Acq: 13 May 2024 15:04

Instrument : MSVOA\_X  
 ClientSampleId :

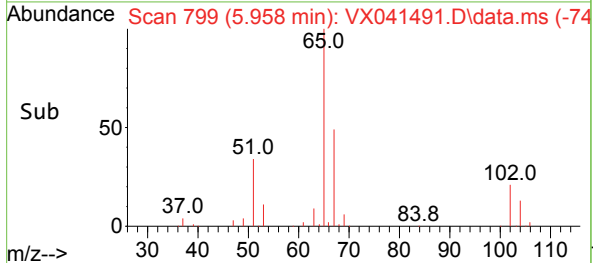
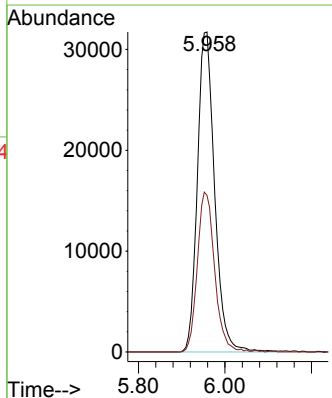
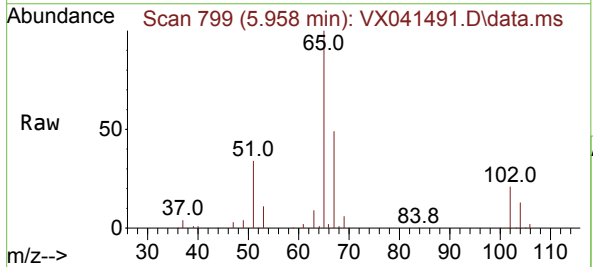


Tgt Ion: 56 Resp: 2553  
 Ion Ratio Lower Upper  
 56 100  
 69 150.1 23.4 35.2#  
 84 114.2 65.9 98.9#

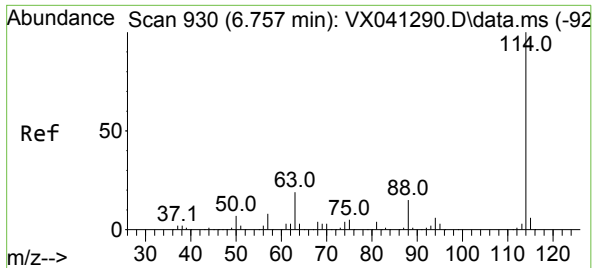


#33  
 1,2-Dichloroethane-d4  
 Concen: 52.535 ug/l  
 RT: 5.958 min Scan# 799  
 Delta R.T. 0.006 min  
 Lab File: VX041491.D  
 Acq: 13 May 2024 15:04

Tgt Ion: 65 Resp: 87649  
 Ion Ratio Lower Upper  
 65 100  
 67 50.2 0.0 100.2

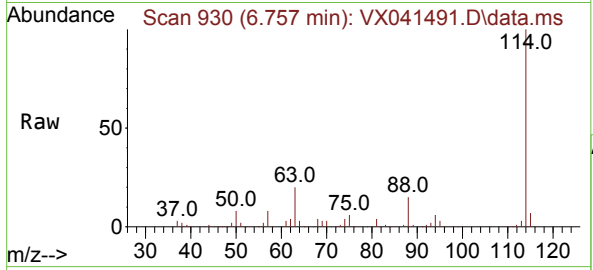






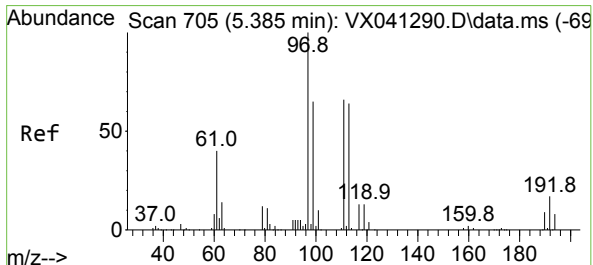
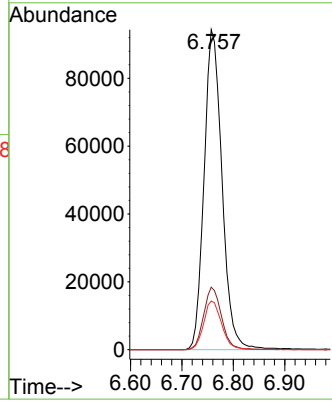
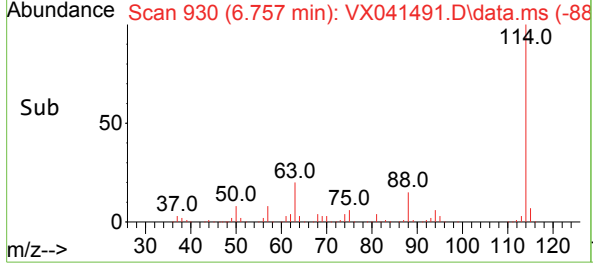
#34  
 1,4-Difluorobenzene  
 Concen: 50.000 ug/l  
 RT: 6.757 min Scan# 91  
 Delta R.T. 0.000 min  
 Lab File: VX041491.D  
 Acq: 13 May 2024 15:04

Instrument : MSVOA\_X  
 ClientSampleId :

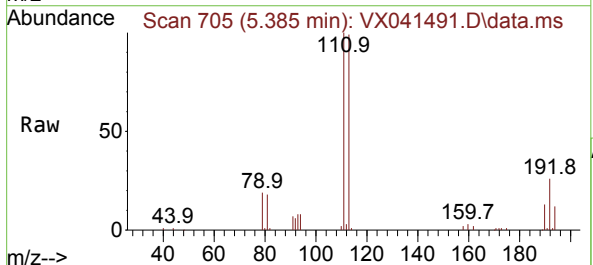


Tgt Ion:114 Resp: 228372

Ion	Ratio	Lower	Upper
114	100		
63	19.5	0.0	45.0
88	15.2	0.0	36.6

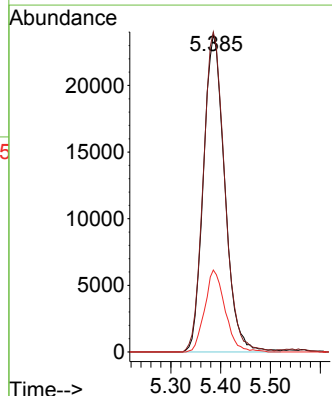
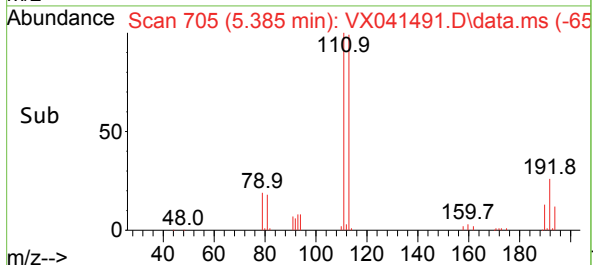


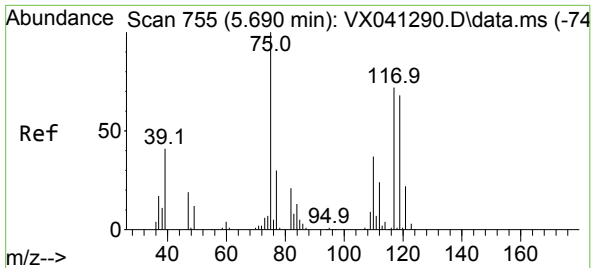
#35  
 Dibromofluoromethane  
 Concen: 45.631 ug/l  
 RT: 5.385 min Scan# 705  
 Delta R.T. 0.000 min  
 Lab File: VX041491.D  
 Acq: 13 May 2024 15:04



Tgt Ion:113 Resp: 70619

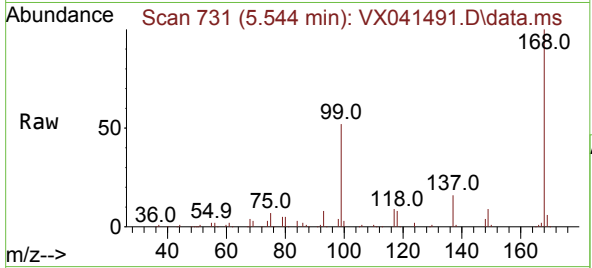
Ion	Ratio	Lower	Upper
113	100		
111	101.4	82.9	124.3
192	24.7	13.3	19.9



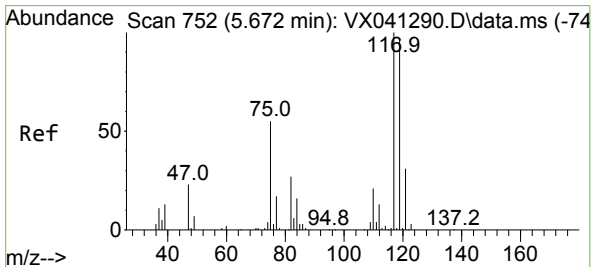
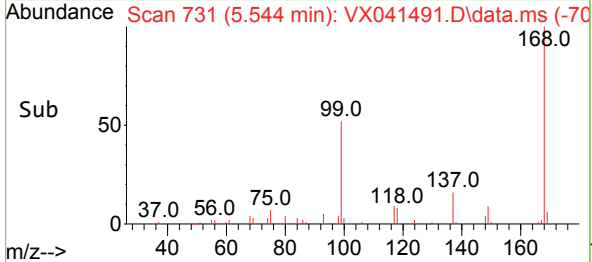
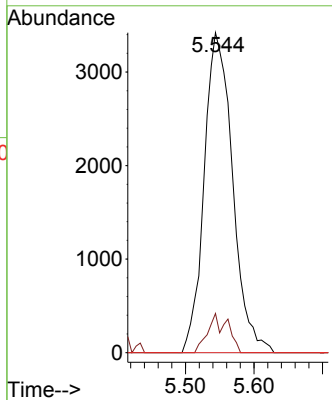


#36  
 1,1-Dichloropropene  
 Concen: 5.330 ug/l  
 RT: 5.544 min Scan# 711  
 Delta R.T. -0.146 min  
 Lab File: VX041491.D  
 Acq: 13 May 2024 15:04

Instrument : MSVOA\_X  
 ClientSampleId :

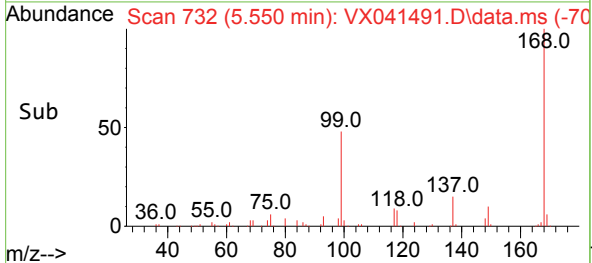
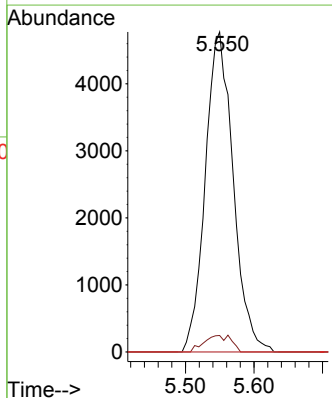
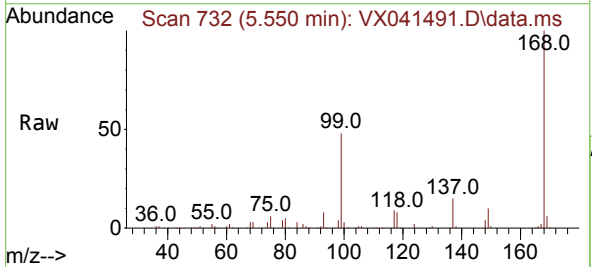


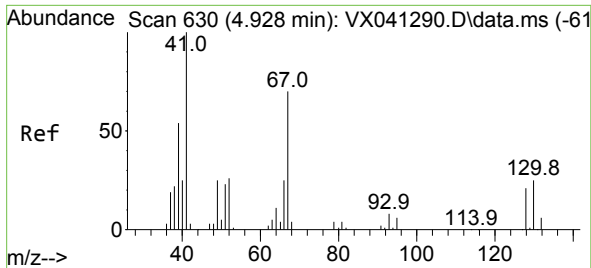
Tgt Ion: 75 Resp: 9863  
 Ion Ratio Lower Upper  
 75 100  
 110 8.5 17.0 50.9#  
 77 0.0 24.7 37.1#



#38  
 Carbon Tetrachloride  
 Concen: 6.371 ug/l  
 RT: 5.550 min Scan# 732  
 Delta R.T. -0.122 min  
 Lab File: VX041491.D  
 Acq: 13 May 2024 15:04

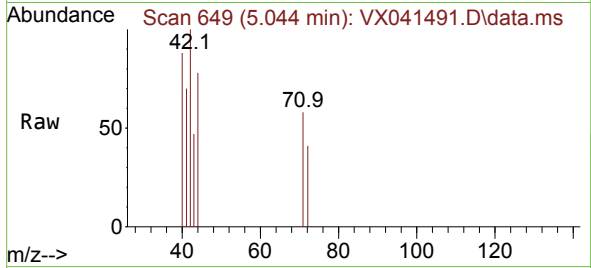
Tgt Ion: 117 Resp: 13506  
 Ion Ratio Lower Upper  
 117 100  
 119 5.1 78.2 117.2#  
 121 0.0 24.4 36.6#





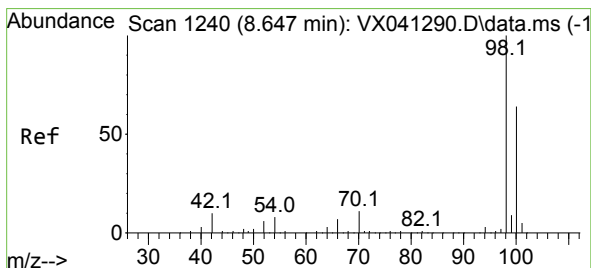
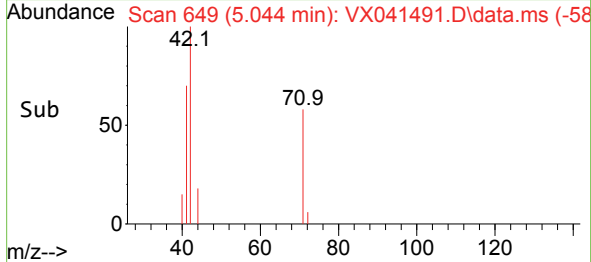
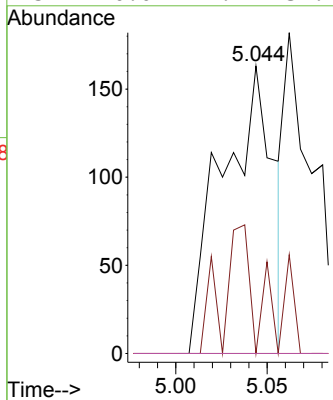
#41  
 Methacrylonitrile  
 Concen: 0.267 ug/l  
 RT: 5.044 min Scan# 649  
 Delta R.T. 0.116 min  
 Lab File: VX041491.D  
 Acq: 13 May 2024 15:04

Instrument :  
 MSVOA\_X  
 ClientSampleId :



Tgt Ion: 41 Resp: 317

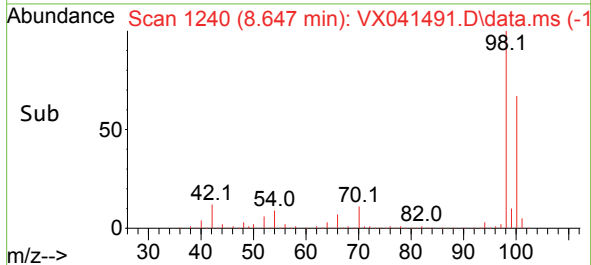
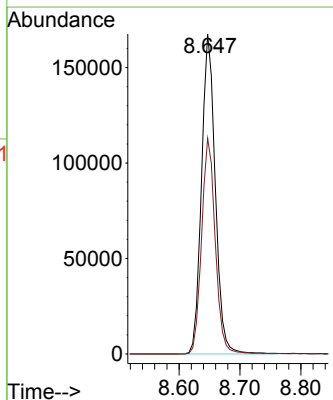
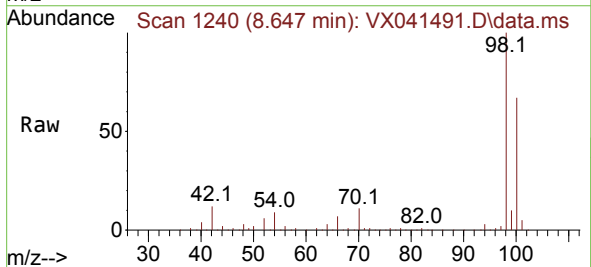
Ion	Ratio	Lower	Upper
41	100		
39	22.7	45.2	67.8#
67	0.0	52.6	78.8#
52	0.0	22.7	34.1#

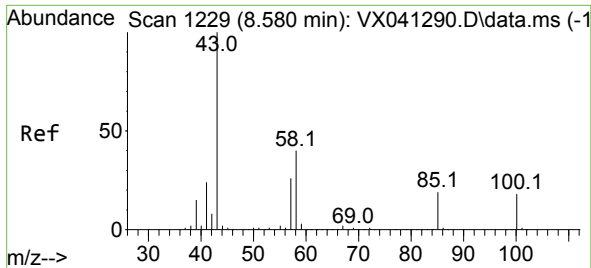


#50  
 Toluene-d8  
 Concen: 53.784 ug/l  
 RT: 8.647 min Scan# 1240  
 Delta R.T. 0.000 min  
 Lab File: VX041491.D  
 Acq: 13 May 2024 15:04

Tgt Ion: 98 Resp: 263451

Ion	Ratio	Lower	Upper
98	100		
100	67.0	53.1	79.7

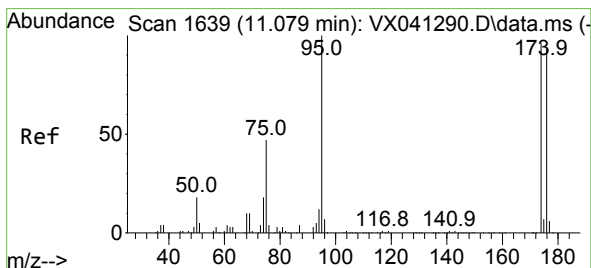
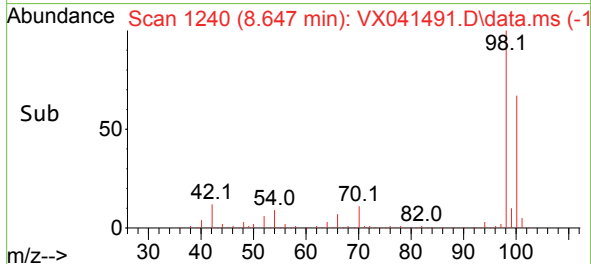
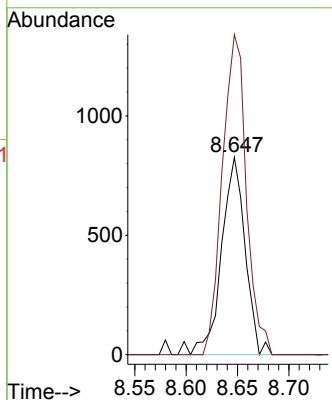
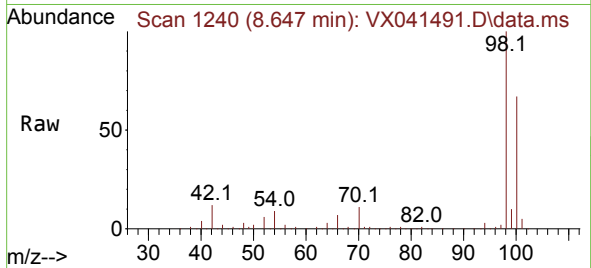




#51  
 4-Methyl-2-Pentanone  
 Concen: 0.638 ug/l  
 RT: 8.647 min Scan# 11  
 Delta R.T. 0.067 min  
 Lab File: VX041491.D  
 Acq: 13 May 2024 15:04

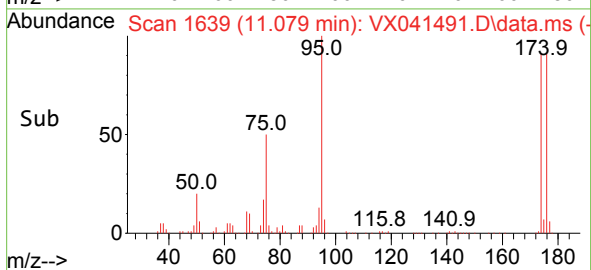
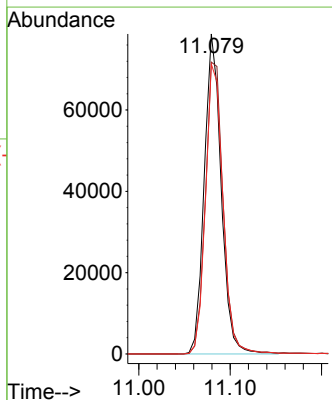
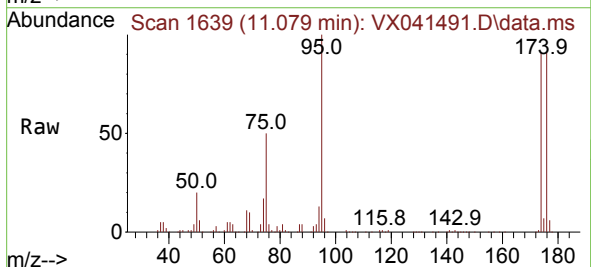
Instrument :  
 MSVOA\_X  
 ClientSampleId :

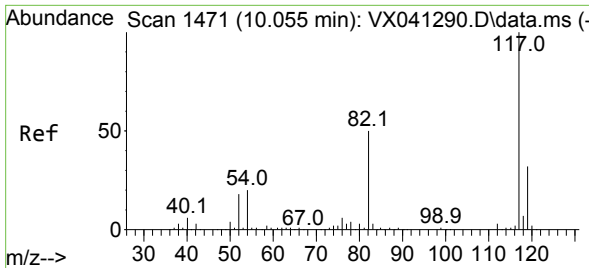
Tgt Ion: 43 Resp: 1330  
 Ion Ratio Lower Upper  
 43 100  
 58 163.8 30.4 45.6#



#62  
 4-Bromofluorobenzene  
 Concen: 53.198 ug/l  
 RT: 11.079 min Scan# 1639  
 Delta R.T. 0.000 min  
 Lab File: VX041491.D  
 Acq: 13 May 2024 15:04

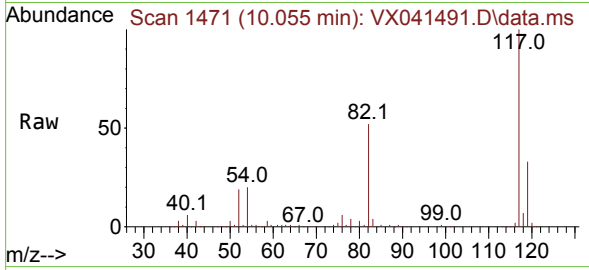
Tgt Ion: 95 Resp: 100872  
 Ion Ratio Lower Upper  
 95 100  
 174 96.2 0.0 135.6  
 176 93.6 0.0 131.0





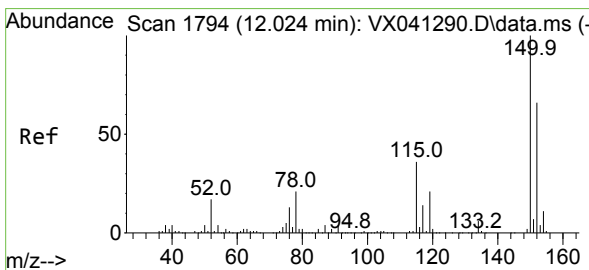
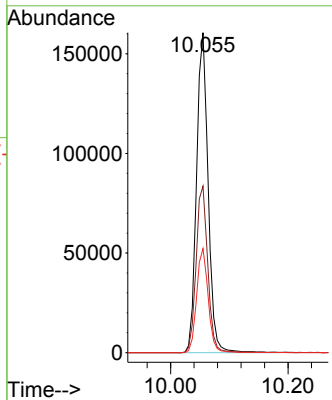
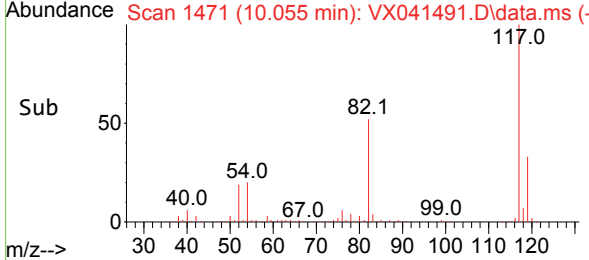
#63  
 Chlorobenzene-d5  
 Concen: 50.000 ug/l  
 RT: 10.055 min Scan# 14  
 Delta R.T. 0.000 min  
 Lab File: VX041491.D  
 Acq: 13 May 2024 15:04

Instrument :  
 MSVOA\_X  
 ClientSampleId :

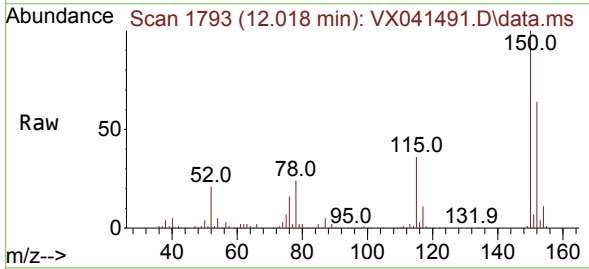


Tgt Ion:117 Resp: 219561

Ion	Ratio	Lower	Upper
117	100		
82	52.0	46.2	69.4
119	32.6	25.5	38.3

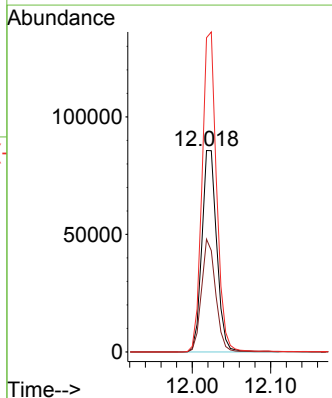
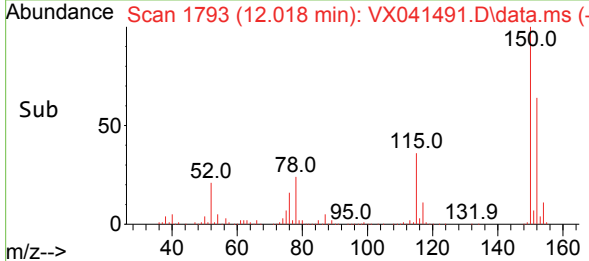


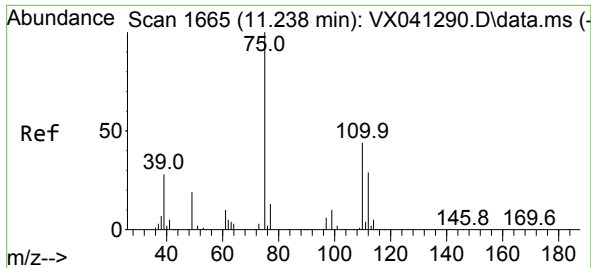
#72  
 1,4-Dichlorobenzene-d4  
 Concen: 50.000 ug/l  
 RT: 12.018 min Scan# 1793  
 Delta R.T. -0.006 min  
 Lab File: VX041491.D  
 Acq: 13 May 2024 15:04



Tgt Ion:152 Resp: 112910

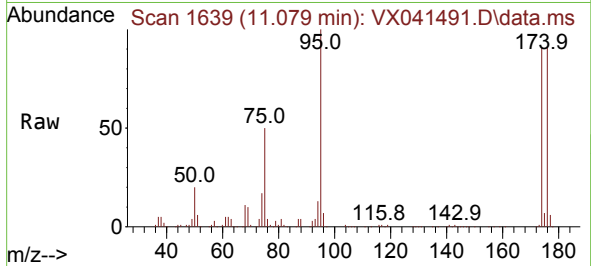
Ion	Ratio	Lower	Upper
152	100		
115	53.6	43.3	129.9
150	154.9	0.0	345.0



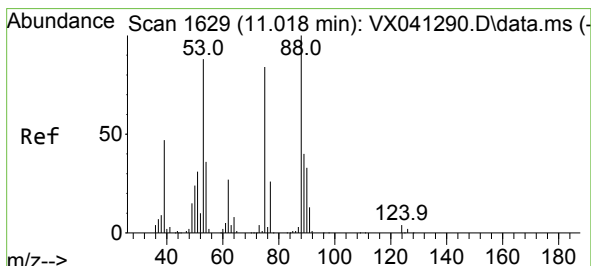
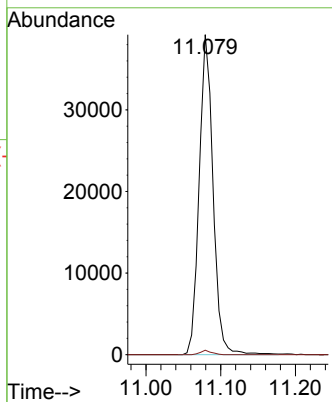
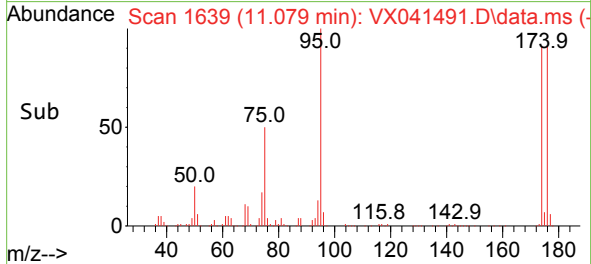


#76  
 1,2,3-Trichloropropane  
 Concen: 27.450 ug/l  
 RT: 11.079 min Scan# 1639  
 Delta R.T. -0.158 min  
 Lab File: VX041491.D  
 Acq: 13 May 2024 15:04

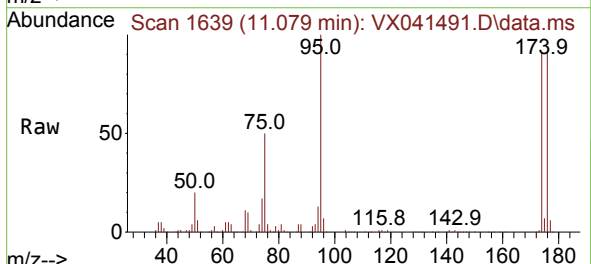
Instrument : MSVOA\_X  
 ClientSampleId :



Tgt Ion: 75 Resp: 50510  
 Ion Ratio Lower Upper  
 75 100  
 77 1.1 19.1 57.5#



#81  
 trans-1,4-Dichloro-2-butene  
 Concen: 74.770 ug/l  
 RT: 11.079 min Scan# 1639  
 Delta R.T. 0.061 min  
 Lab File: VX041491.D  
 Acq: 13 May 2024 15:04



Tgt Ion: 75 Resp: 50510  
 Ion Ratio Lower Upper  
 75 100  
 53 0.0 90.5 135.7#  
 89 0.0 36.9 55.3#

