

Data Path : Z:\voasrv\HPCHEM1\MSVOA_X\Data\VX051325\
 Data File : VX046172.D
 Acq On : 13 May 2025 17:32
 Operator : JC/MD
 Sample : Q2007-36
 Misc : 5.0mL/MSVOA_X/WATER
 ALS Vial : 21 Sample Multiplier: 1

Instrument :
 MSVOA_X
 ClientSampleId :
 OR-636-COMP-15

Quant Time: May 14 01:44:16 2025
 Quant Method : Z:\voasrv\HPCHEM1\MSVOA_X\Method\82X050525W.M
 Quant Title : SW846 8260
 QLast Update : Tue May 06 07:12:22 2025
 Response via : Initial Calibration

Compound	R.T.	QIon	Response	Conc	Units	Dev(Min)

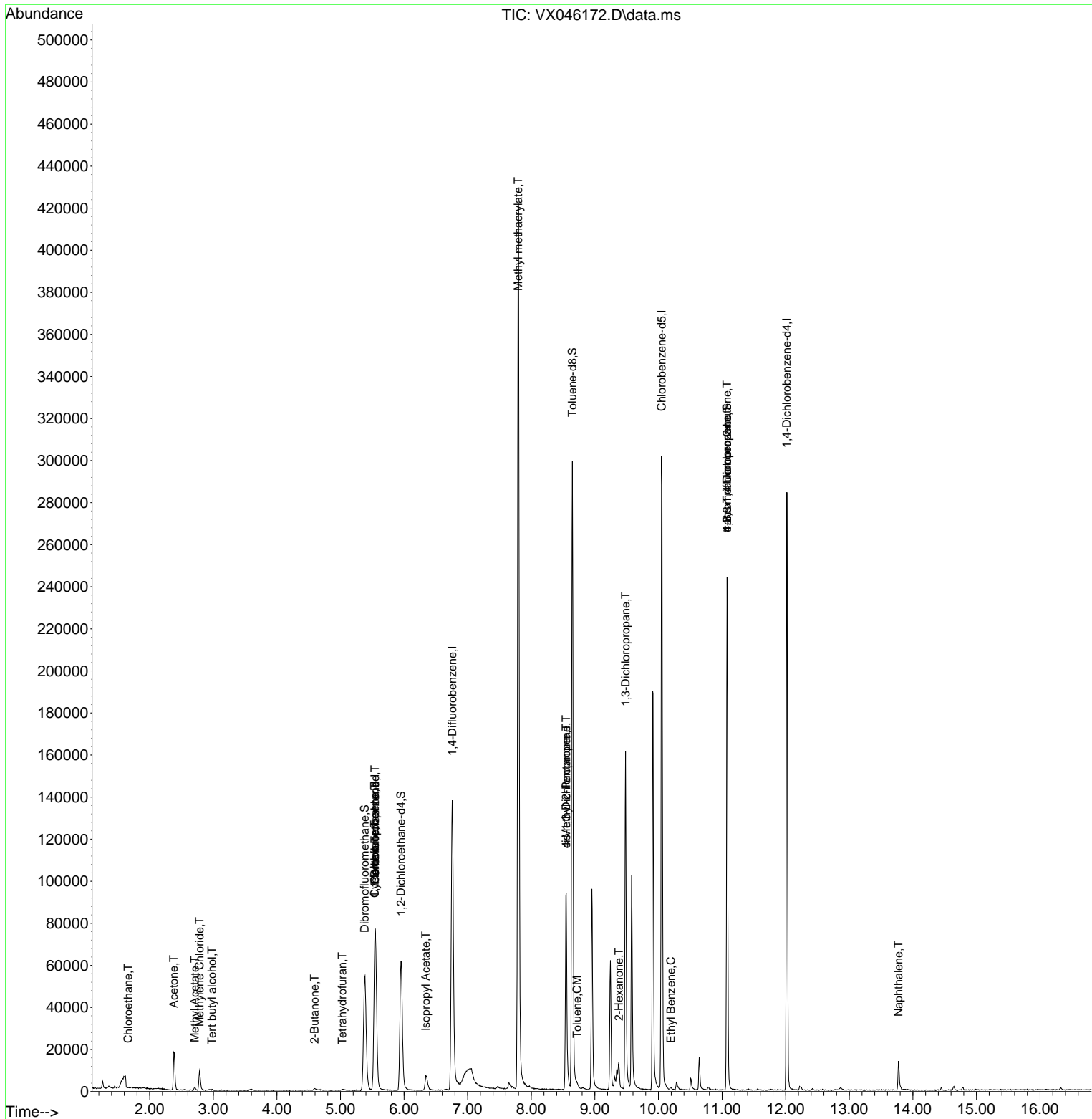
Internal Standards						
1) Pentafluorobenzene	5.544	168	66266	50.000	ug/l	0.00
34) 1,4-Difluorobenzene	6.757	114	133248	50.000	ug/l	0.00
63) Chlorobenzene-d5	10.049	117	125430	50.000	ug/l	0.00
72) 1,4-Dichlorobenzene-d4	12.018	152	52602	50.000	ug/l	0.00
System Monitoring Compounds						
33) 1,2-Dichloroethane-d4	5.952	65	65512	53.029	ug/l	0.00
Spiked Amount	50.000	Range 74 - 125	Recovery	=	106.060%	
35) Dibromofluoromethane	5.379	113	47393	49.392	ug/l	0.00
Spiked Amount	50.000	Range 75 - 124	Recovery	=	98.780%	
50) Toluene-d8	8.647	98	168553	50.753	ug/l	0.00
Spiked Amount	50.000	Range 86 - 113	Recovery	=	101.500%	
62) 4-Bromofluorobenzene	11.079	95	64960	50.993	ug/l	0.00
Spiked Amount	50.000	Range 77 - 121	Recovery	=	101.980%	
Target Compounds						
						Qvalue
6) Chloroethane	1.660	64	155	0.317	ug/l #	44
11) Tert butyl alcohol	2.977	59	340	1.961	ug/l #	72
16) Acetone	2.380	43	20257	40.895	ug/l	98
18) Methyl Acetate	2.709	43	2059	1.791	ug/l #	91
20) Methylene Chloride	2.782	84	3987	4.200	ug/l	88
25) 2-Butanone	4.593	43	2016	2.803	ug/l	98
29) Tetrahydrofuran	5.025	42	174	0.386	ug/l #	46
31) Cyclohexane	5.538	56	1957	1.329	ug/l #	43
36) 1,1-Dichloropropene	5.538	75	6698	5.195	ug/l #	51
38) Carbon Tetrachloride	5.544	117	7818	5.397	ug/l #	15
43) Isopropyl Acetate	6.342	43	11021	4.535	ug/l	97
48) Methyl methacrylate	7.793	41	41341	33.313	ug/l #	50
51) 4-Methyl-2-Pentanone	8.549	43	37315	23.134	ug/l #	52
52) Toluene	8.720	92	464	0.200	ug/l	80
54) cis-1,3-Dichloropropene	8.549	75	14774	10.310	ug/l #	62
57) 1,3-Dichloropropane	9.482	76	1342	0.818	ug/l #	42
59) 2-Hexanone	9.378	43	11811	9.897	ug/l #	28
67) Ethyl Benzene	10.195	91	989	0.204	ug/l	94
76) 1,2,3-Trichloropropane	11.079	75	37137	29.331	ug/l #	36
81) trans-1,4-Dichloro-2-b...	11.079	75	37137	95.491	ug/l #	1
95) Naphthalene	13.774	128	10577	2.884	ug/l	98

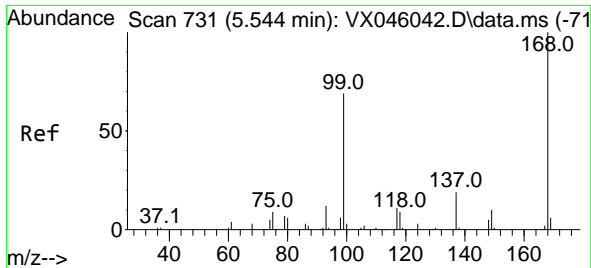
(#) = qualifier out of range (m) = manual integration (+) = signals summed

Data Path : Z:\voasrv\HPCHEM1\MSVOA_X\Data\VX051325\
 Data File : VX046172.D
 Acq On : 13 May 2025 17:32
 Operator : JC/MD
 Sample : Q2007-36
 Misc : 5.0mL/MSVOA_X/WATER
 ALS Vial : 21 Sample Multiplier: 1

Instrument :
 MSVOA_X
 ClientSampleId :
 OR-636-COMP-15

Quant Time: May 14 01:44:16 2025
 Quant Method : Z:\voasrv\HPCHEM1\MSVOA_X\Method\82X050525W.M
 Quant Title : SW846 8260
 QLast Update : Tue May 06 07:12:22 2025
 Response via : Initial Calibration

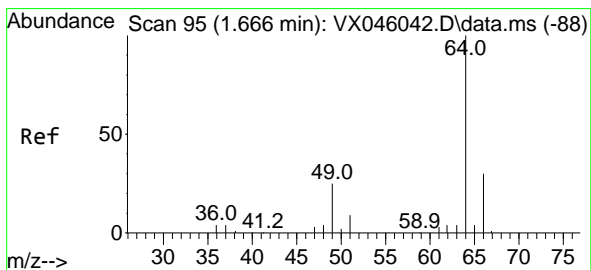
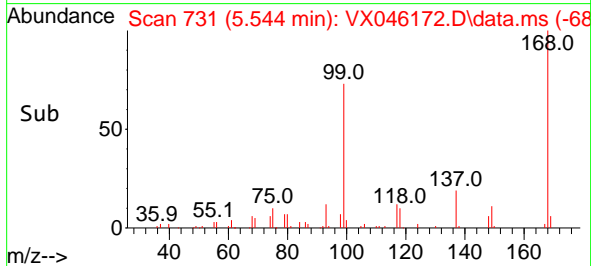
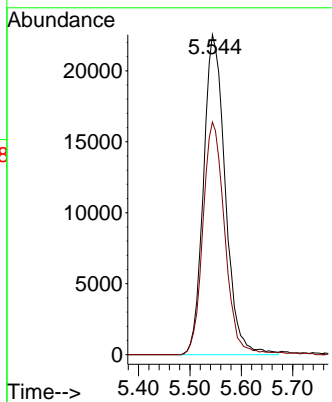
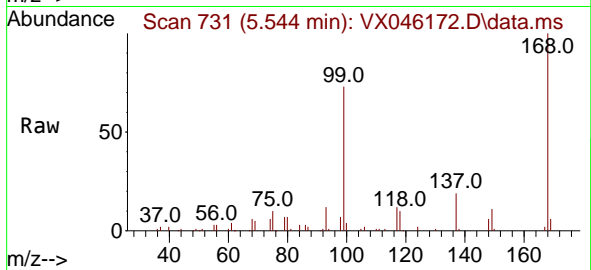




#1
 Pentafluorobenzene
 Concen: 50.000 ug/l
 RT: 5.544 min Scan# 71
 Delta R.T. -0.000 min
 Lab File: VX046172.D
 Acq: 13 May 2025 17:32

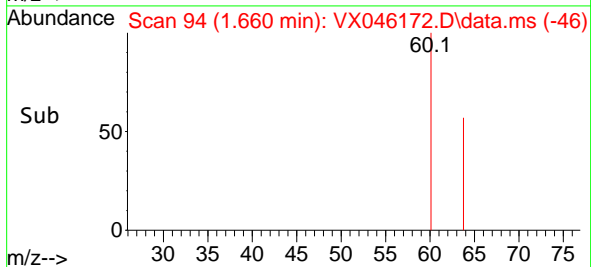
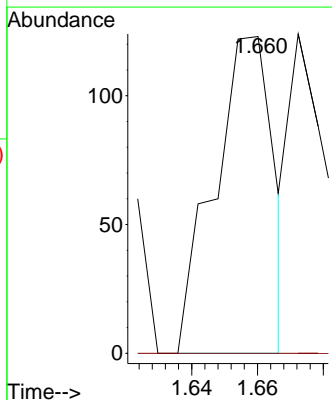
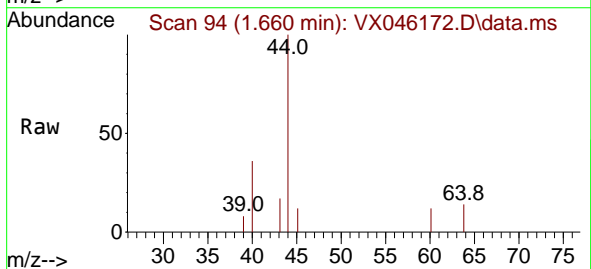
Instrument :
 MSVOA_X
 ClientSampleId :
 OR-636-COMP-15

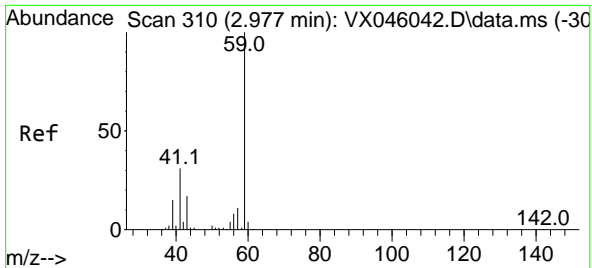
Tgt Ion:168 Resp: 66266
 Ion Ratio Lower Upper
 168 100
 99 72.7 54.9 82.3



#6
 Chloroethane
 Concen: 0.317 ug/l
 RT: 1.660 min Scan# 94
 Delta R.T. -0.006 min
 Lab File: VX046172.D
 Acq: 13 May 2025 17:32

Tgt Ion: 64 Resp: 155
 Ion Ratio Lower Upper
 64 100
 66 0.0 24.3 36.5#

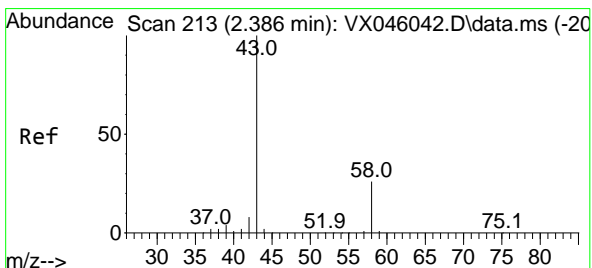
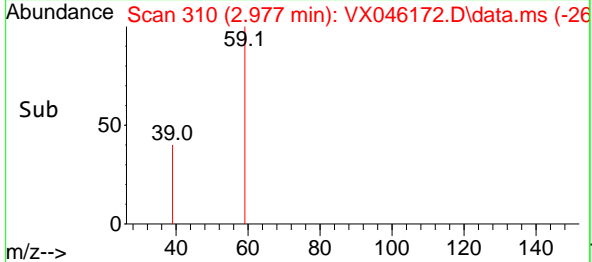
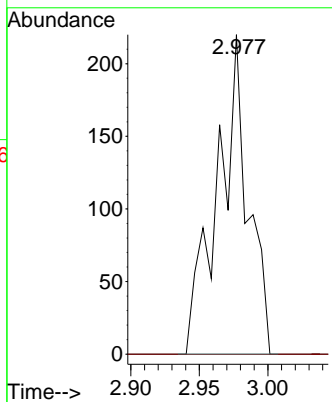
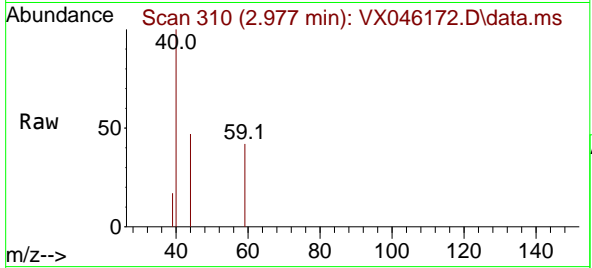




#11
 Tert butyl alcohol
 Concen: 1.961 ug/l
 RT: 2.977 min Scan# 310
 Delta R.T. -0.000 min
 Lab File: VX046172.D
 Acq: 13 May 2025 17:32

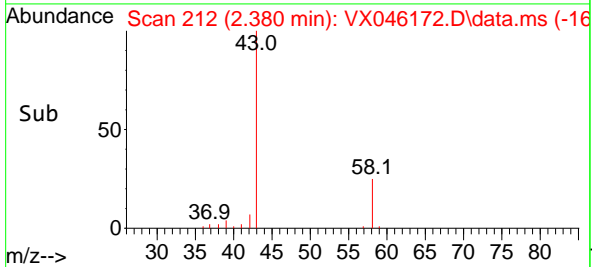
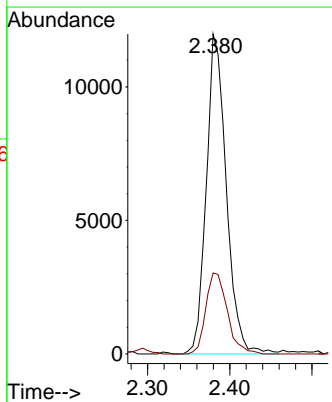
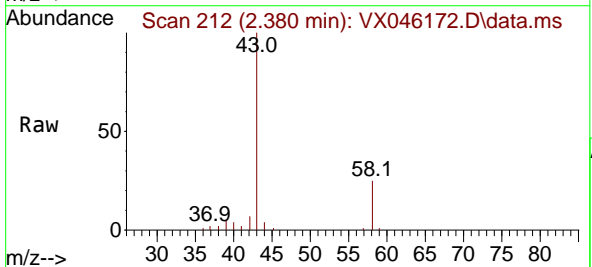
Instrument : MSVOA_X
 ClientSampleId : OR-636-COMP-15

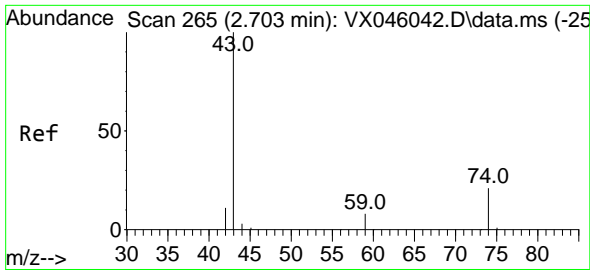
Tgt Ion: 59 Resp: 340
 Ion Ratio Lower Upper
 59 100
 57 0.0 8.6 12.8#



#16
 Acetone
 Concen: 40.895 ug/l
 RT: 2.380 min Scan# 212
 Delta R.T. -0.006 min
 Lab File: VX046172.D
 Acq: 13 May 2025 17:32

Tgt Ion: 43 Resp: 20257
 Ion Ratio Lower Upper
 43 100
 58 25.3 21.2 31.8

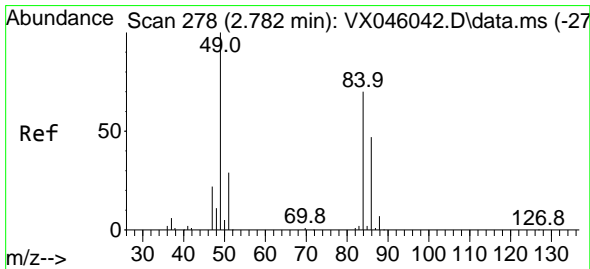
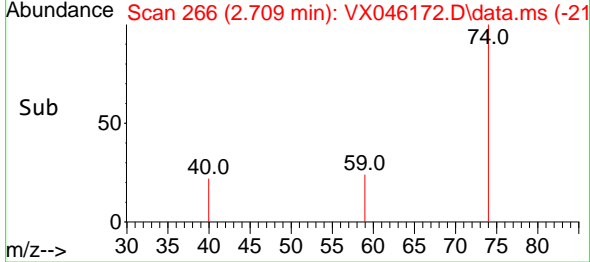
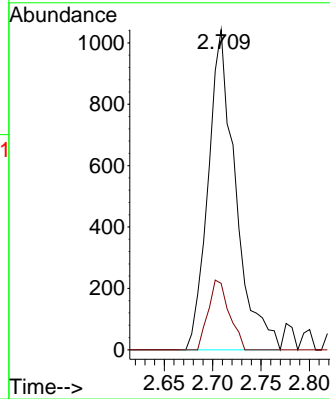
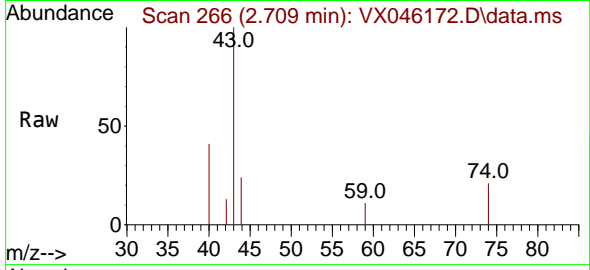




#18
 Methyl Acetate
 Concen: 1.791 ug/l
 RT: 2.709 min Scan# 2059
 Delta R.T. 0.006 min
 Lab File: VX046172.D
 Acq: 13 May 2025 17:32

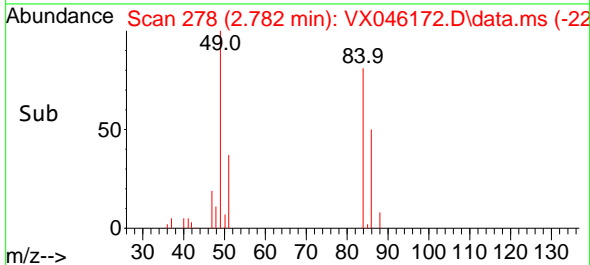
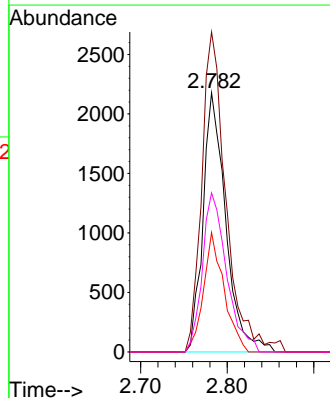
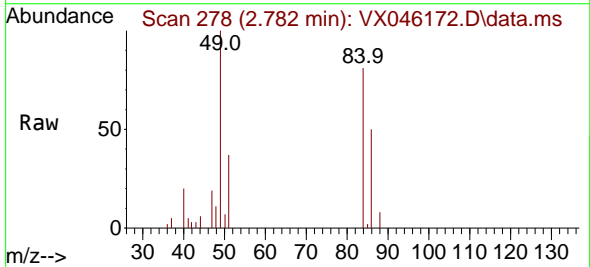
Instrument : MSVOA_X
 ClientSampleId : OR-636-COMP-15

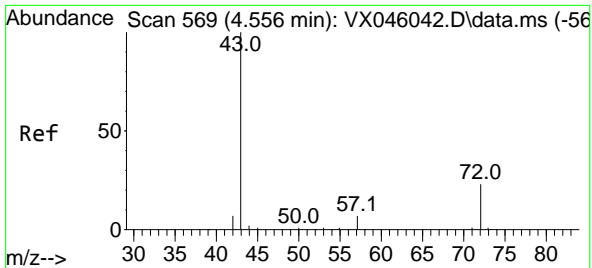
Tgt Ion: 43 Resp: 2059
 Ion Ratio Lower Upper
 43 100
 74 16.6 16.7 25.1#



#20
 Methylene Chloride
 Concen: 4.200 ug/l
 RT: 2.782 min Scan# 278
 Delta R.T. -0.000 min
 Lab File: VX046172.D
 Acq: 13 May 2025 17:32

Tgt Ion: 84 Resp: 3987
 Ion Ratio Lower Upper
 84 100
 49 123.5 113.9 170.9
 51 46.1 33.5 50.3
 86 61.3 53.8 80.8



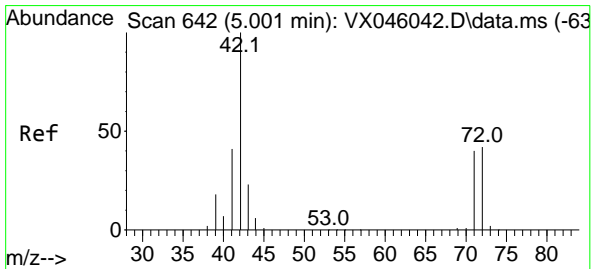
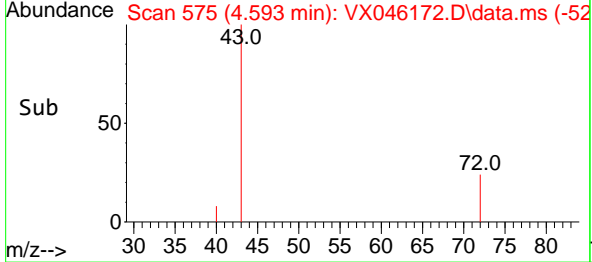
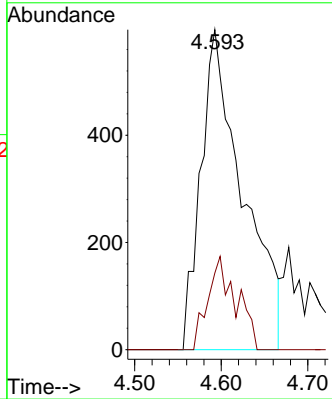
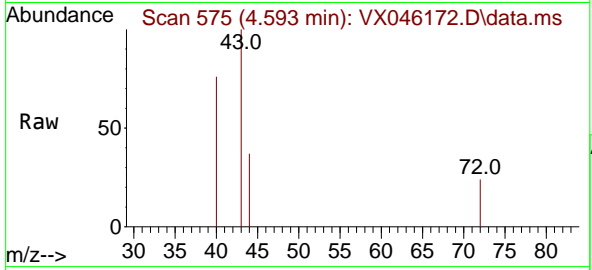


#25
 2-Butanone
 Concen: 2.803 ug/l
 RT: 4.593 min Scan# 51
 Delta R.T. 0.036 min
 Lab File: VX046172.D
 Acq: 13 May 2025 17:32

Instrument : MSVOA_X
 ClientSampleId : OR-636-COMP-15

Tgt Ion: 43 Resp: 2016

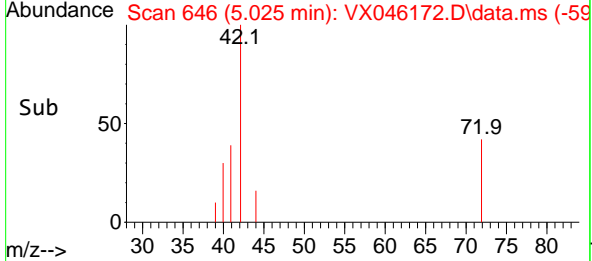
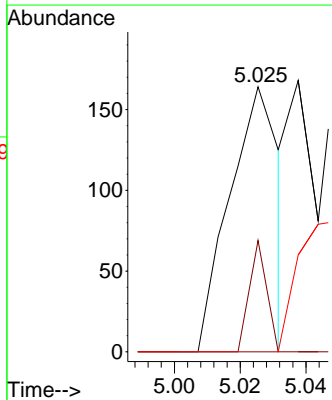
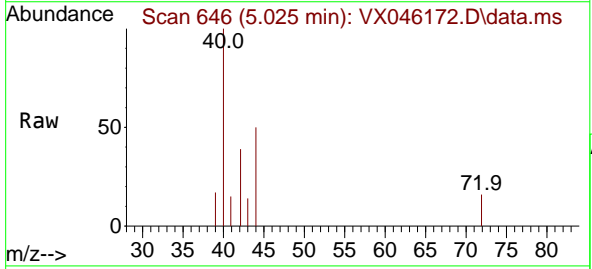
Ion	Ratio	Lower	Upper
43	100		
72	24.0	18.4	27.6

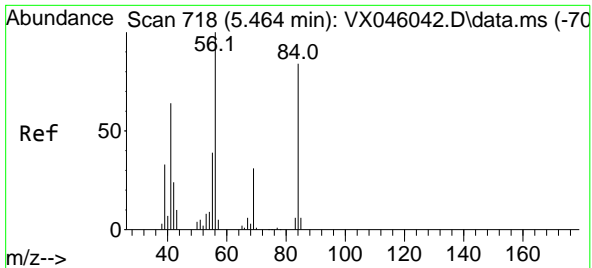


#29
 Tetrahydrofuran
 Concen: 0.386 ug/l
 RT: 5.025 min Scan# 646
 Delta R.T. 0.024 min
 Lab File: VX046172.D
 Acq: 13 May 2025 17:32

Tgt Ion: 42 Resp: 174

Ion	Ratio	Lower	Upper
42	100		
72	14.4	33.7	50.5#
71	0.0	31.4	47.2#



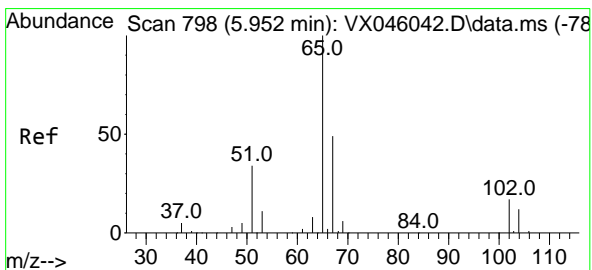
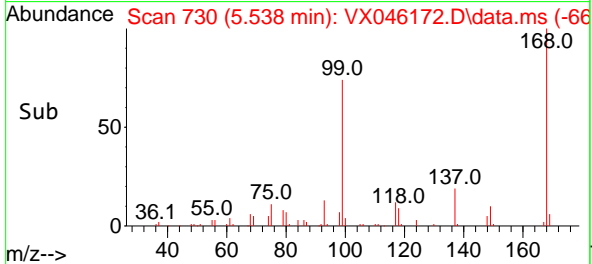
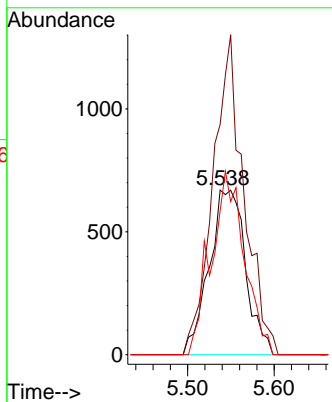
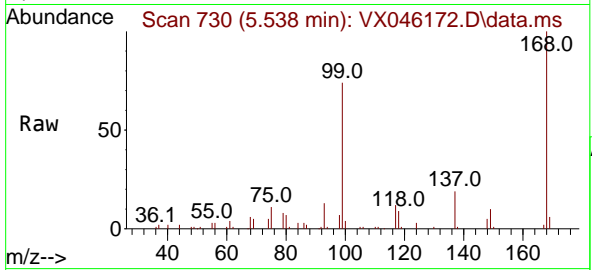


#31
 Cyclohexane
 Concen: 1.329 ug/l
 RT: 5.538 min Scan# 718
 Delta R.T. 0.073 min
 Lab File: VX046172.D
 Acq: 13 May 2025 17:32

Instrument : MSVOA_X
 ClientSampleId : OR-636-COMP-15

Tgt Ion: 56 Resp: 1957

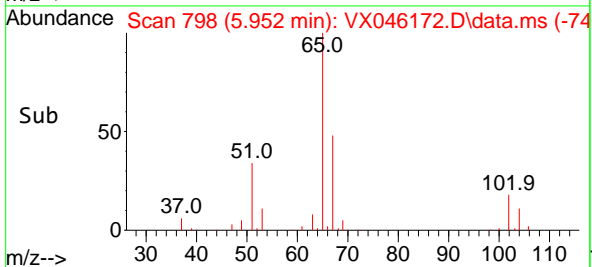
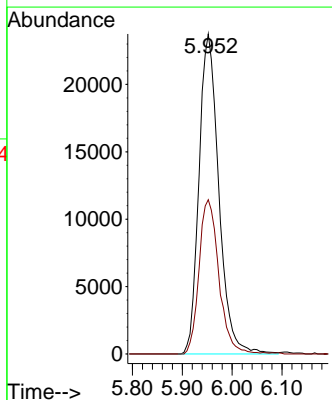
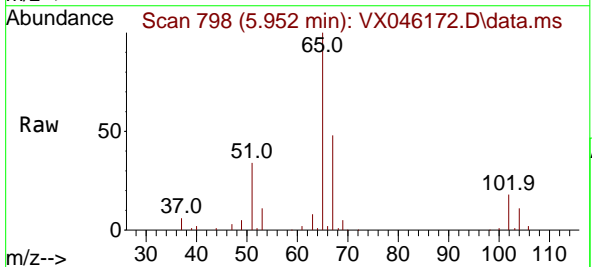
Ion	Ratio	Lower	Upper
56	100		
69	139.9	24.4	36.6#
84	87.3	66.9	100.3

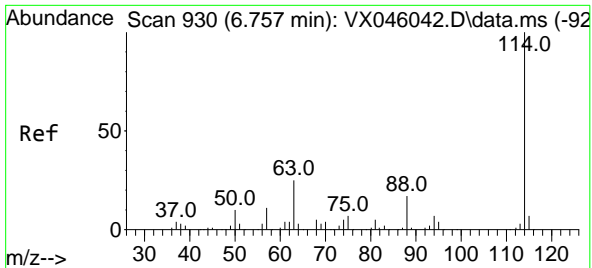


#33
 1,2-Dichloroethane-d4
 Concen: 53.029 ug/l
 RT: 5.952 min Scan# 798
 Delta R.T. -0.000 min
 Lab File: VX046172.D
 Acq: 13 May 2025 17:32

Tgt Ion: 65 Resp: 65512

Ion	Ratio	Lower	Upper
65	100		
67	48.1	0.0	99.0

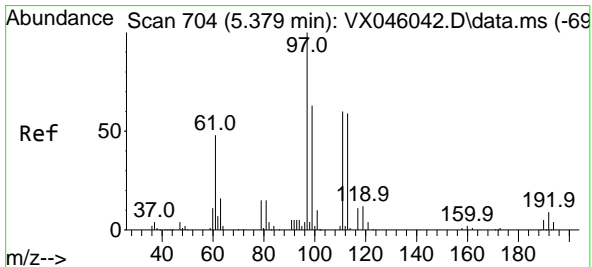
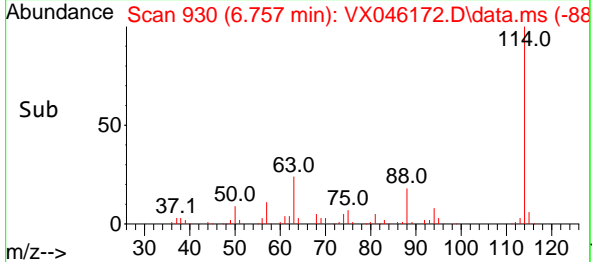
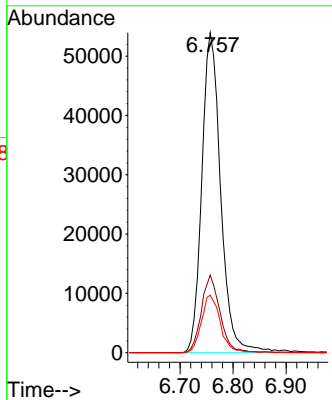
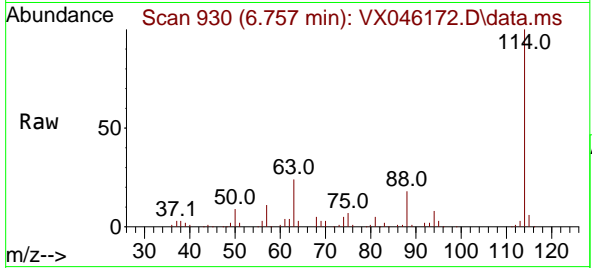




#34
 1,4-Difluorobenzene
 Concen: 50.000 ug/l
 RT: 6.757 min Scan# 91
 Delta R.T. -0.000 min
 Lab File: VX046172.D
 Acq: 13 May 2025 17:32

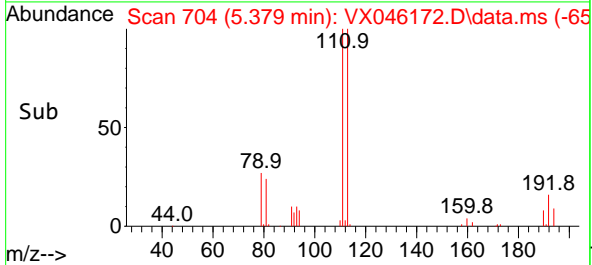
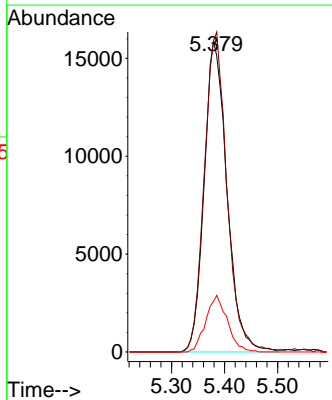
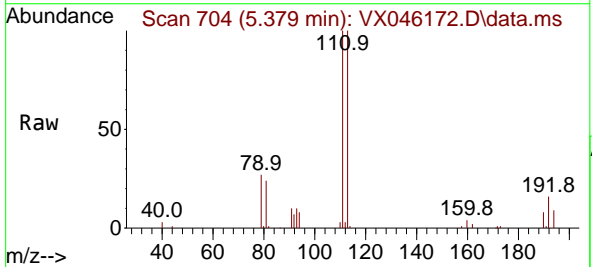
Instrument :
 MSVOA_X
 ClientSampleId :
 OR-636-COMP-15

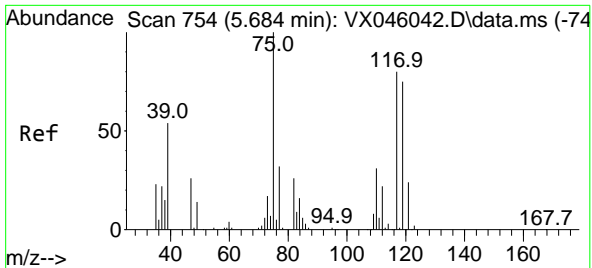
Tgt Ion	Resp	Lower	Upper
114	133248		
63	24.3	0.0	49.2
88	18.0	0.0	33.6



#35
 Dibromofluoromethane
 Concen: 49.392 ug/l
 RT: 5.379 min Scan# 704
 Delta R.T. -0.000 min
 Lab File: VX046172.D
 Acq: 13 May 2025 17:32

Tgt Ion	Resp	Lower	Upper
113	47393		
113	100		
111	102.4	83.1	124.7
192	17.2	13.3	19.9

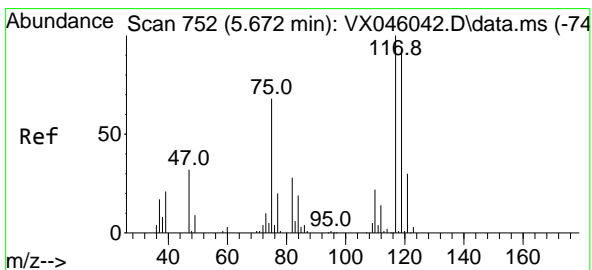
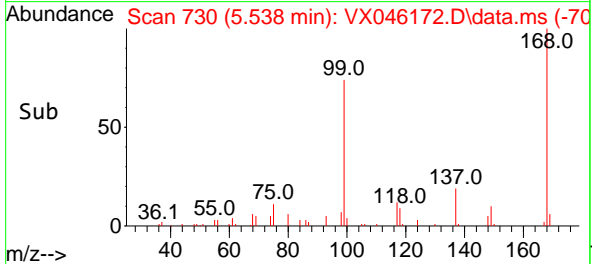
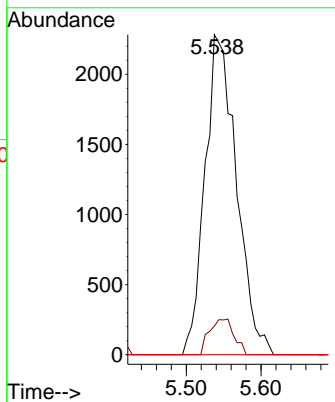
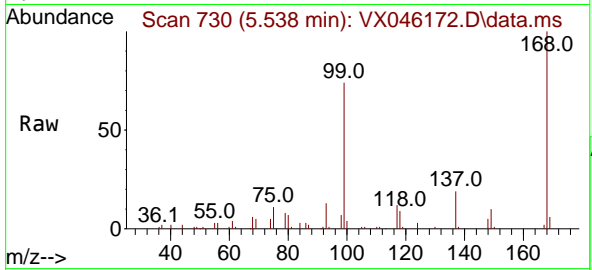




#36
 1,1-Dichloropropene
 Concen: 5.195 ug/l
 RT: 5.538 min Scan# 711
 Delta R.T. -0.146 min
 Lab File: VX046172.D
 Acq: 13 May 2025 17:32

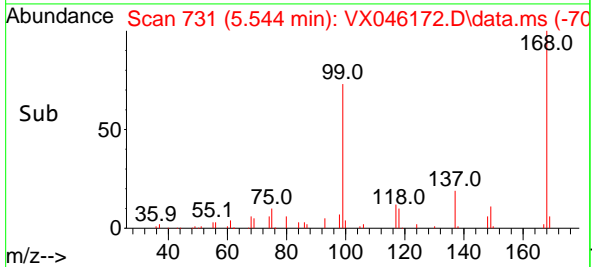
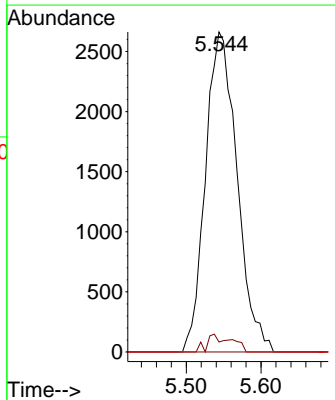
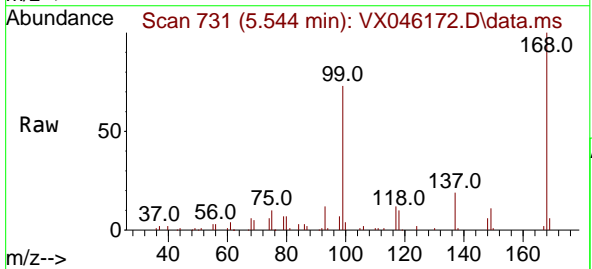
Instrument : MSVOA_X
 ClientSampleId : OR-636-COMP-15

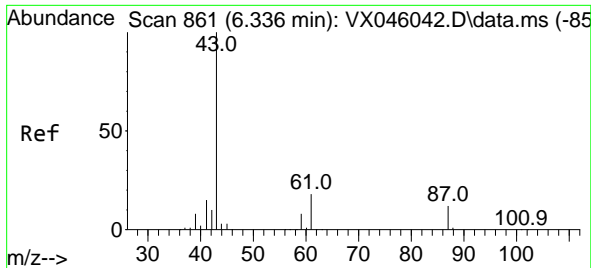
Tgt Ion	Resp	Lower	Upper
75	6698		
75	100		
110	8.7	16.3	48.9#
77	0.0	24.3	36.5#



#38
 Carbon Tetrachloride
 Concen: 5.397 ug/l
 RT: 5.544 min Scan# 731
 Delta R.T. -0.128 min
 Lab File: VX046172.D
 Acq: 13 May 2025 17:32

Tgt Ion	Resp	Lower	Upper
117	7818		
117	100		
119	3.1	75.2	112.8#
121	0.0	24.2	36.4#



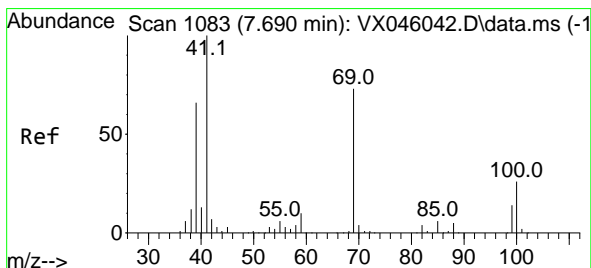
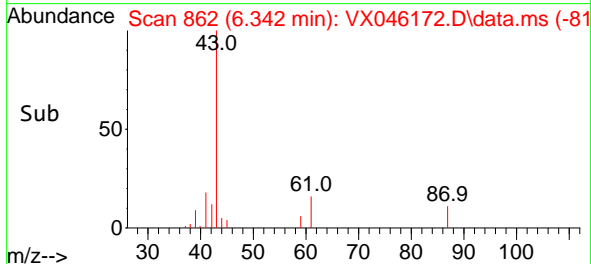
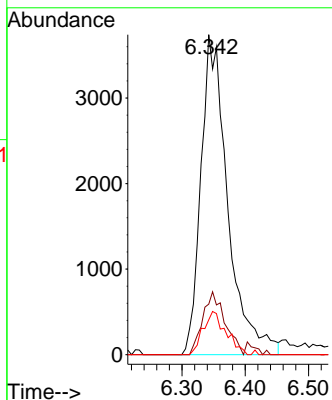
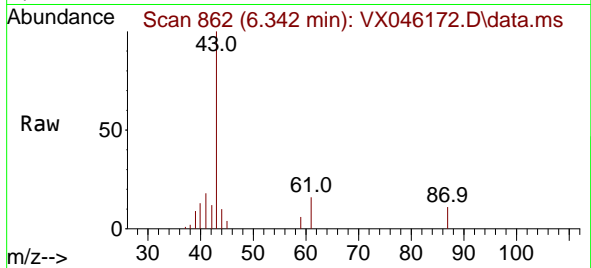


#43
 Isopropyl Acetate
 Concen: 4.535 ug/l
 RT: 6.342 min Scan# 80
 Delta R.T. 0.006 min
 Lab File: VX046172.D
 Acq: 13 May 2025 17:32

Instrument : MSVOA_X
 ClientSampleId : OR-636-COMP-15

Tgt Ion: 43 Resp: 11021

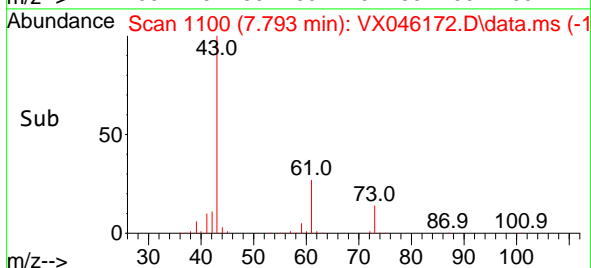
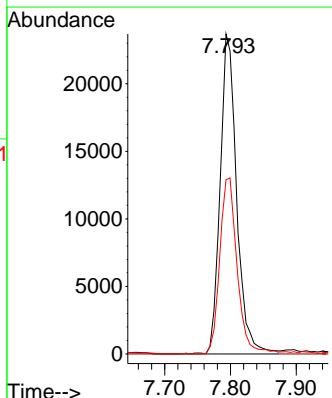
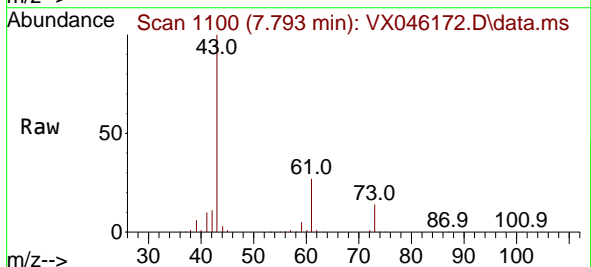
Ion	Ratio	Lower	Upper
43	100		
61	16.3	14.3	21.5
87	11.5	9.5	14.3

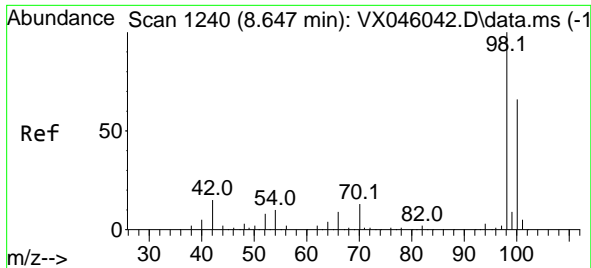


#48
 Methyl methacrylate
 Concen: 33.313 ug/l
 RT: 7.793 min Scan# 1100
 Delta R.T. 0.104 min
 Lab File: VX046172.D
 Acq: 13 May 2025 17:32

Tgt Ion: 41 Resp: 41341

Ion	Ratio	Lower	Upper
41	100		
69	0.0	58.5	87.7#
39	58.0	51.7	77.5

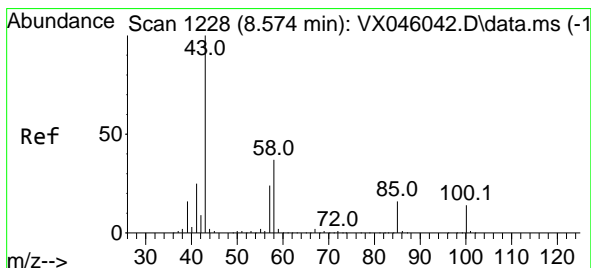
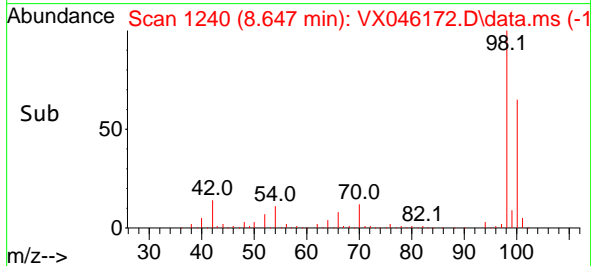
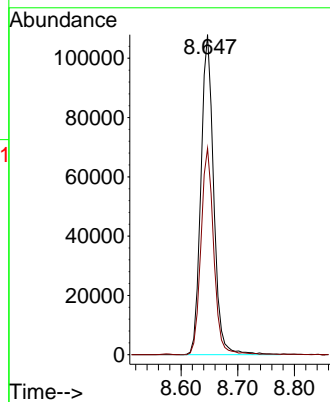
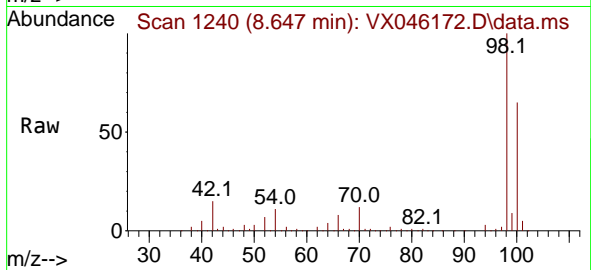




#50
 Toluene-d8
 Concen: 50.753 ug/l
 RT: 8.647 min Scan# 11
 Delta R.T. -0.000 min
 Lab File: VX046172.D
 Acq: 13 May 2025 17:32

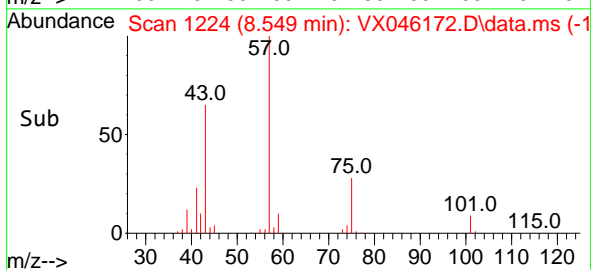
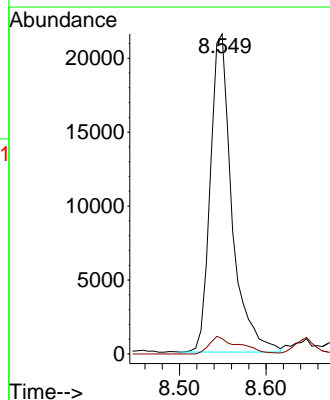
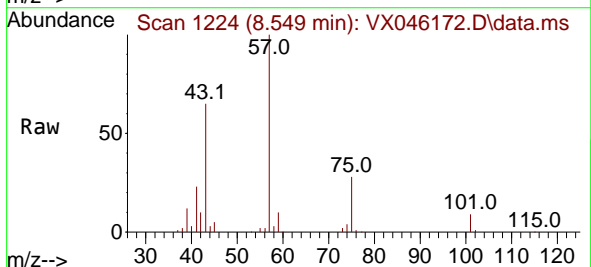
Instrument :
 MSVOA_X
 ClientSampleId :
 OR-636-COMP-15

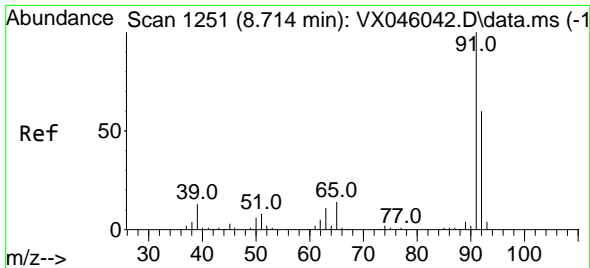
Tgt Ion: 98 Resp: 168553
 Ion Ratio Lower Upper
 98 100
 100 64.7 53.5 80.3



#51
 4-Methyl-2-Pentanone
 Concen: 23.134 ug/l
 RT: 8.549 min Scan# 1224
 Delta R.T. -0.024 min
 Lab File: VX046172.D
 Acq: 13 May 2025 17:32

Tgt Ion: 43 Resp: 37315
 Ion Ratio Lower Upper
 43 100
 58 7.6 28.9 43.3#

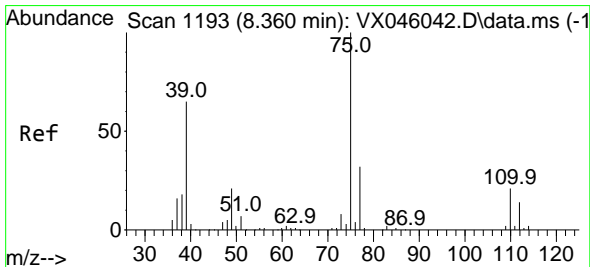
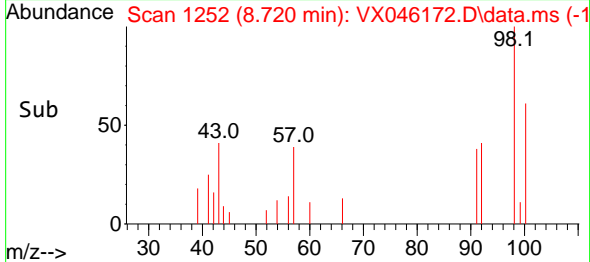
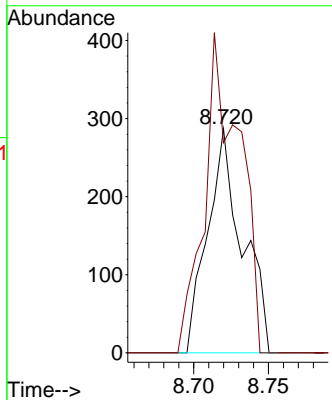
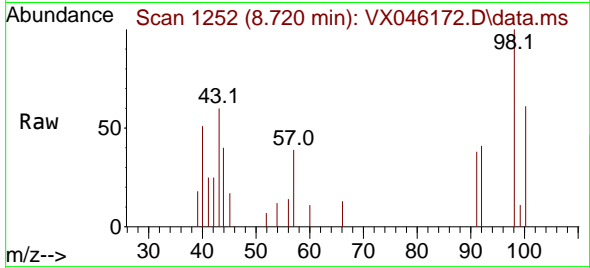




#52
 Toluene
 Concen: 0.200 ug/l
 RT: 8.720 min Scan# 1124
 Delta R.T. 0.006 min
 Lab File: VX046172.D
 Acq: 13 May 2025 17:32

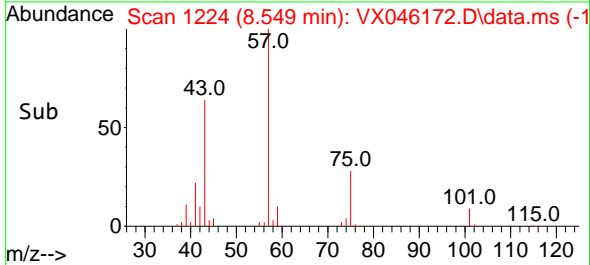
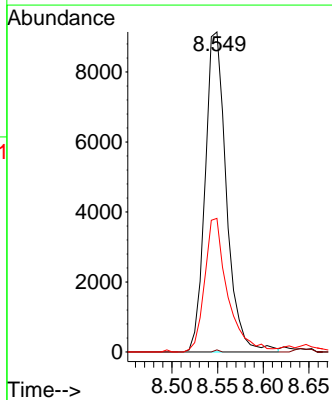
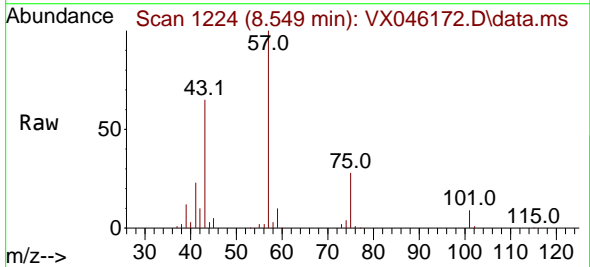
Instrument :
 MSVOA_X
 ClientSampleId :
 OR-636-COMP-15

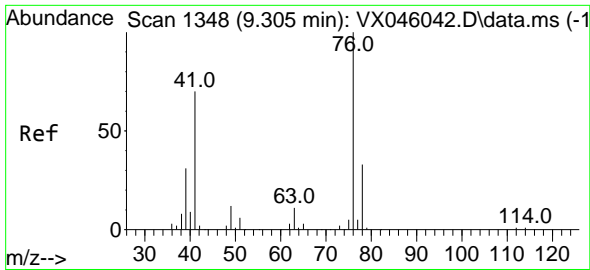
Tgt Ion: 92 Resp: 464
 Ion Ratio Lower Upper
 92 100
 91 143.3 136.6 205.0



#54
 cis-1,3-Dichloropropene
 Concen: 10.310 ug/l
 RT: 8.549 min Scan# 1224
 Delta R.T. 0.189 min
 Lab File: VX046172.D
 Acq: 13 May 2025 17:32

Tgt Ion: 75 Resp: 14774
 Ion Ratio Lower Upper
 75 100
 77 0.6 25.4 38.0#
 39 41.7 52.2 78.4#

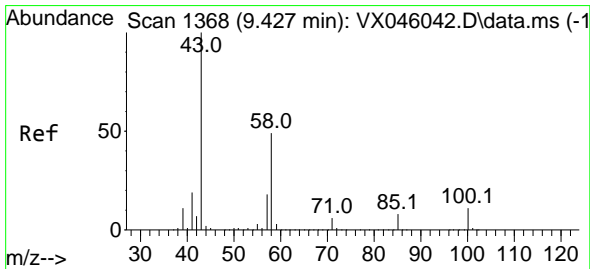
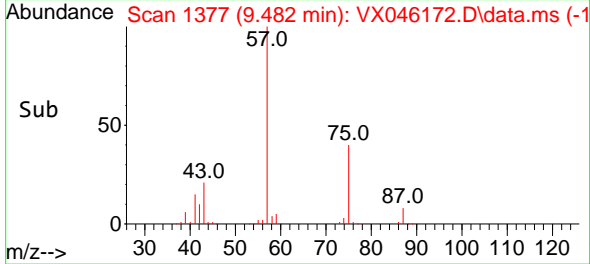
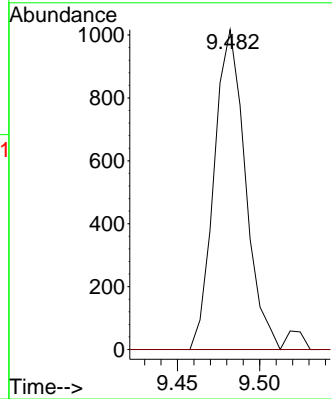
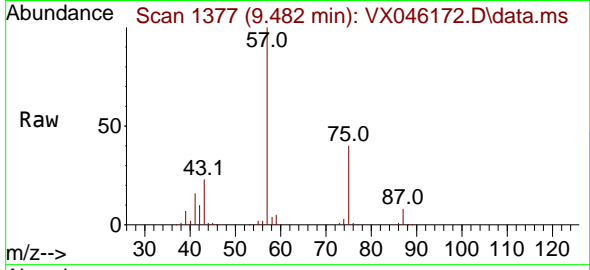




#57
 1,3-Dichloropropane
 Concen: 0.818 ug/l
 RT: 9.482 min Scan# 1342
 Delta R.T. 0.177 min
 Lab File: VX046172.D
 Acq: 13 May 2025 17:32

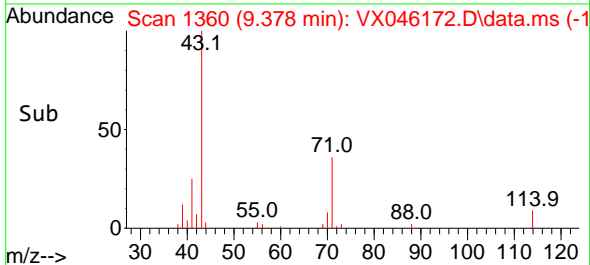
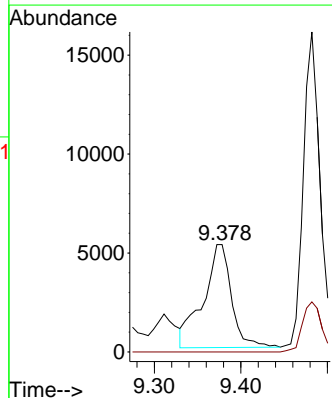
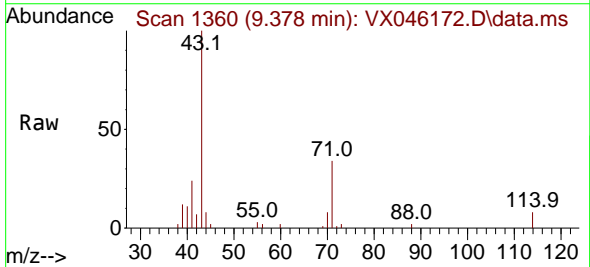
Instrument : MSVOA_X
 ClientSampleId : OR-636-COMP-15

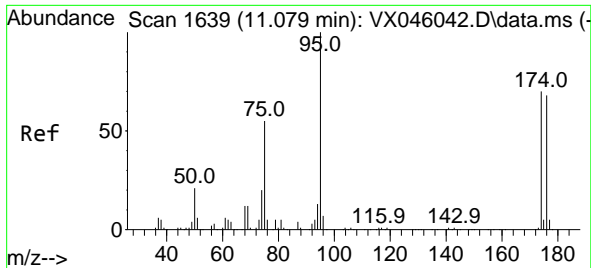
Tgt Ion: 76 Resp: 1342
 Ion Ratio Lower Upper
 76 100
 78 0.0 26.3 39.5#



#59
 2-Hexanone
 Concen: 9.897 ug/l
 RT: 9.378 min Scan# 1360
 Delta R.T. -0.049 min
 Lab File: VX046172.D
 Acq: 13 May 2025 17:32

Tgt Ion: 43 Resp: 11811
 Ion Ratio Lower Upper
 43 100
 58 0.0 24.9 74.6#

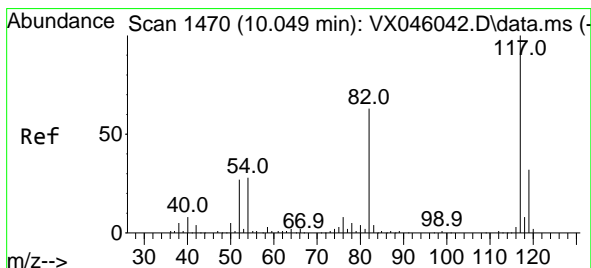
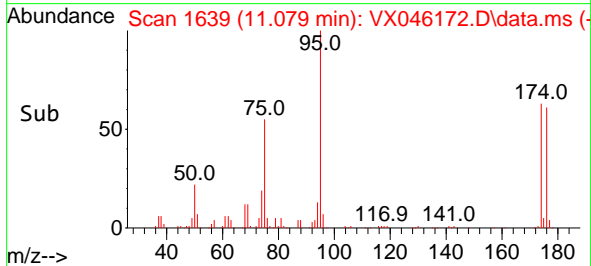
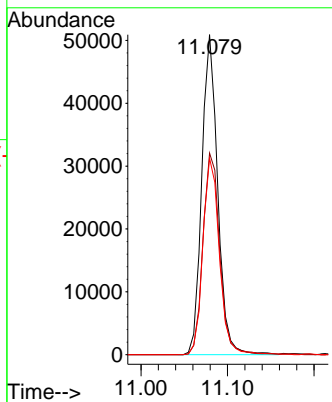
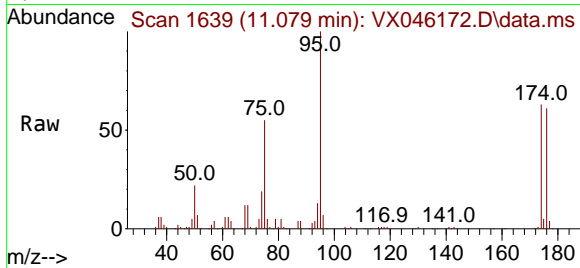




#62
 4-Bromofluorobenzene
 Concen: 50.993 ug/l
 RT: 11.079 min Scan# 1639
 Delta R.T. -0.000 min
 Lab File: VX046172.D
 Acq: 13 May 2025 17:32

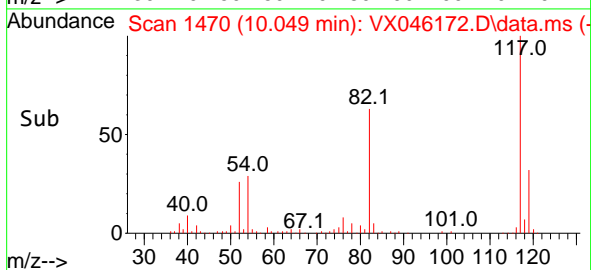
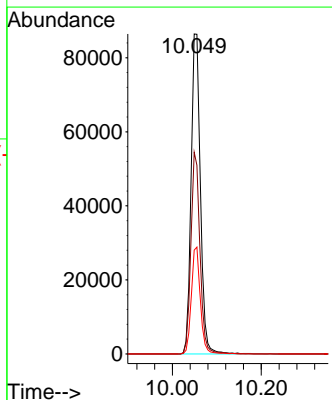
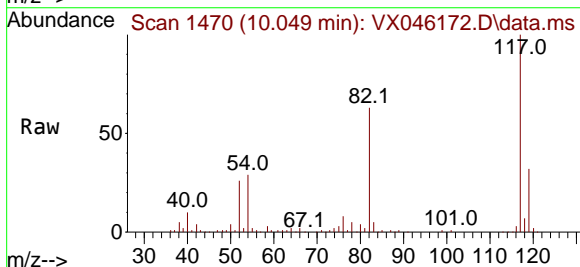
Instrument : MSVOA_X
 ClientSampleId : OR-636-COMP-15

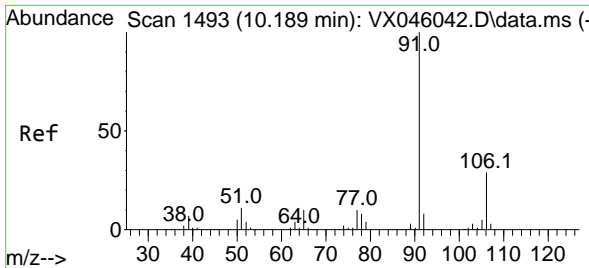
Tgt Ion	Resp	Lower	Upper
95	64960	100	
174	66.6	0.0	135.8
176	63.9	0.0	131.4



#63
 Chlorobenzene-d5
 Concen: 50.000 ug/l
 RT: 10.049 min Scan# 1470
 Delta R.T. -0.000 min
 Lab File: VX046172.D
 Acq: 13 May 2025 17:32

Tgt Ion	Resp	Lower	Upper
117	125430	100	
82	63.1	50.6	76.0
119	32.4	25.8	38.6

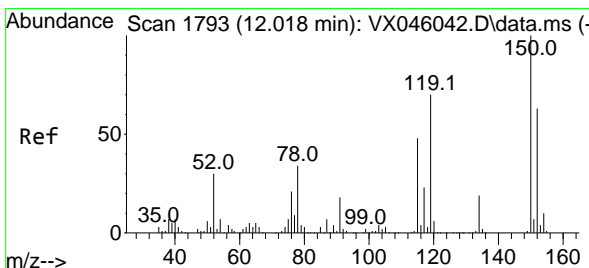
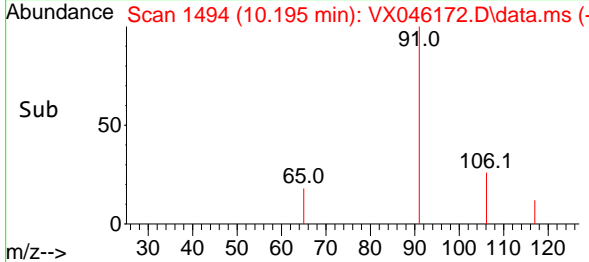
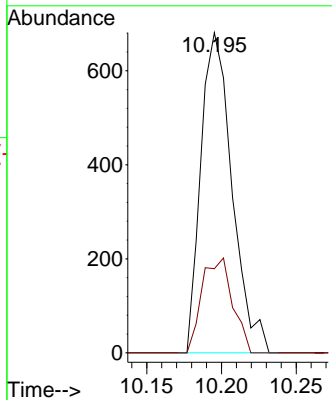
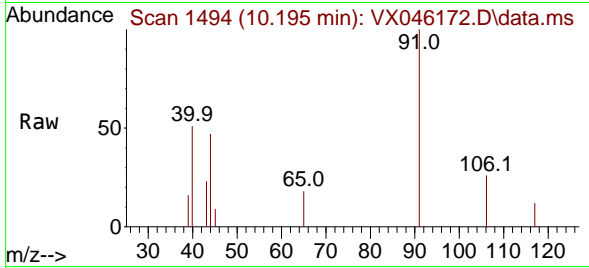




#67
 Ethyl Benzene
 Concen: 0.204 ug/l
 RT: 10.195 min Scan# 1494
 Delta R.T. 0.006 min
 Lab File: VX046172.D
 Acq: 13 May 2025 17:32

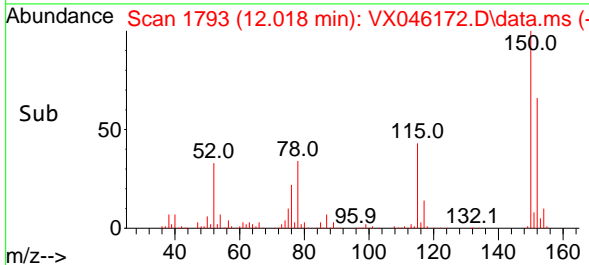
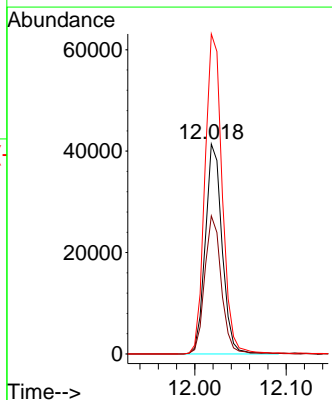
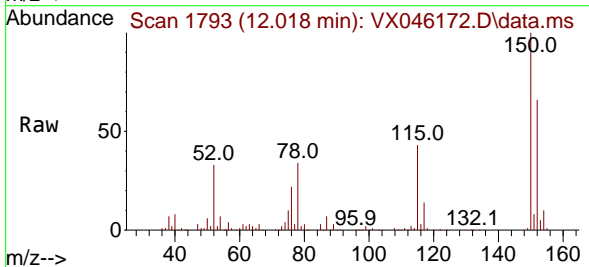
Instrument : MSVOA_X
 ClientSampleId : OR-636-COMP-15

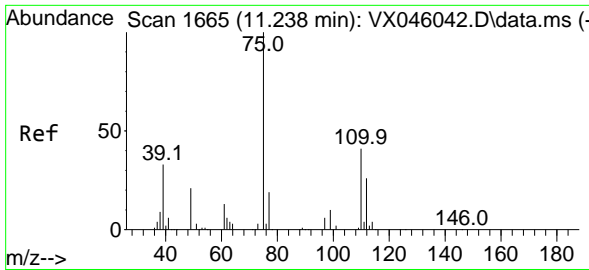
Tgt Ion: 91 Resp: 989
 Ion Ratio Lower Upper
 91 100
 106 26.3 23.4 35.2



#72
 1,4-Dichlorobenzene-d4
 Concen: 50.000 ug/l
 RT: 12.018 min Scan# 1793
 Delta R.T. -0.000 min
 Lab File: VX046172.D
 Acq: 13 May 2025 17:32

Tgt Ion: 152 Resp: 52602
 Ion Ratio Lower Upper
 152 100
 115 65.3 46.9 140.7
 150 157.0 0.0 351.0

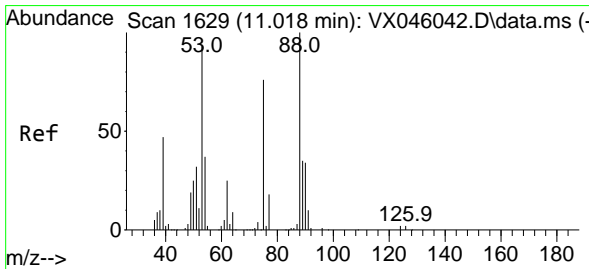
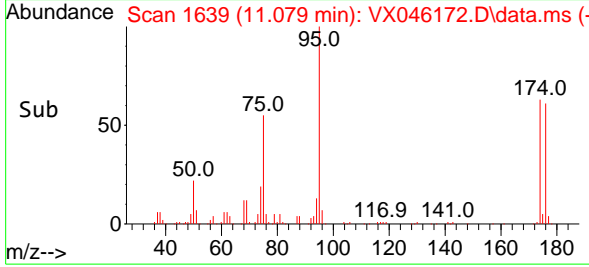
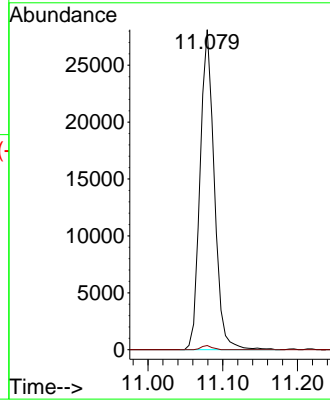
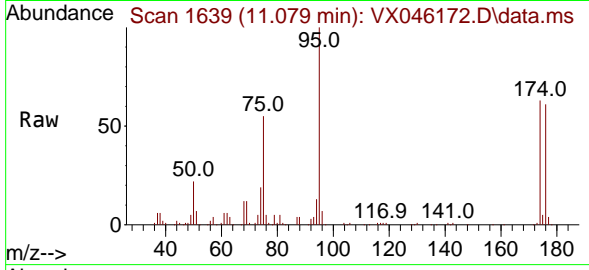




#76
 1,2,3-Trichloropropane
 Concen: 29.331 ug/l
 RT: 11.079 min Scan# 1639
 Delta R.T. -0.159 min
 Lab File: VX046172.D
 Acq: 13 May 2025 17:32

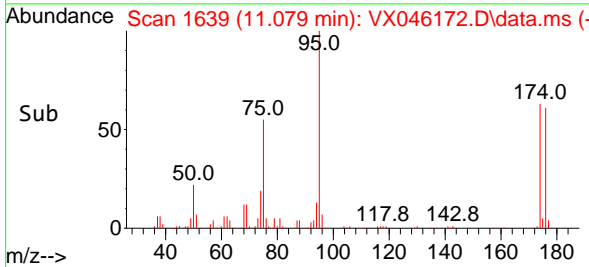
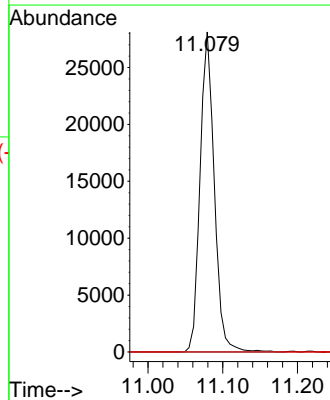
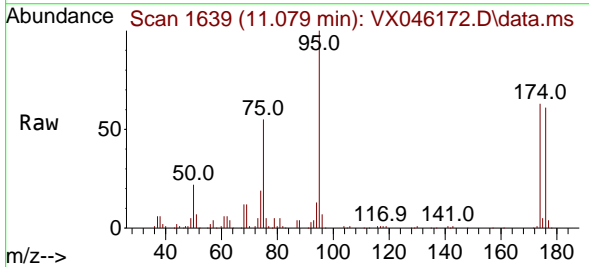
Instrument : MSVOA_X
 ClientSampleId : OR-636-COMP-15

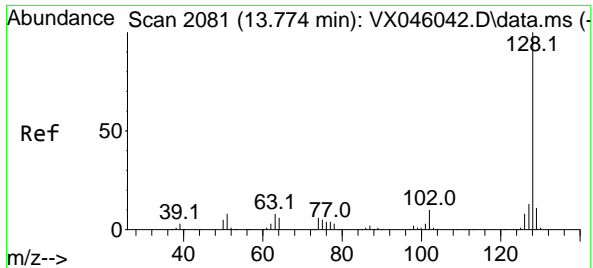
Tgt Ion: 75 Resp: 37137
 Ion Ratio Lower Upper
 75 100
 77 1.0 20.5 61.5#



#81
 trans-1,4-Dichloro-2-butene
 Concen: 95.491 ug/l
 RT: 11.079 min Scan# 1639
 Delta R.T. 0.061 min
 Lab File: VX046172.D
 Acq: 13 May 2025 17:32

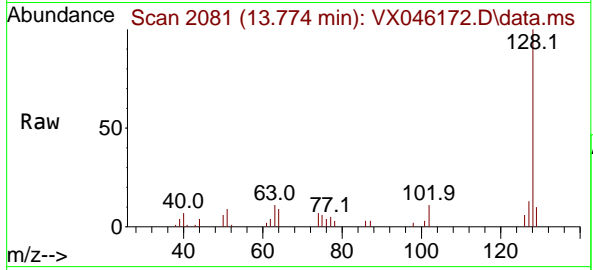
Tgt Ion: 75 Resp: 37137
 Ion Ratio Lower Upper
 75 100
 53 0.0 100.5 150.7#
 89 0.0 37.0 55.6#





#95
 Naphthalene
 Concen: 2.884 ug/l
 RT: 13.774 min Scan# 20
 Delta R.T. -0.000 min
 Lab File: VX046172.D
 Acq: 13 May 2025 17:32

Instrument :
 MSVOA_X
 ClientSampleId :
 OR-636-COMP-15



Tgt Ion:128 Resp: 10577

Ion	Ratio	Lower	Upper
128	100		
127	13.6	10.4	15.6
129	9.9	8.6	13.0

