

Data Path : Z:\VOASRV\HPCHEM1\MSVOA X\DATA\VX051419\
 Data File : VX009563.D
 Acq On : 14 May 2019 15:40
 Operator : JC/SP
 Sample : K2852-01
 Misc : 5.0mL/MSVOA X/WATER
 ALS Vial : 12 Sample Multiplier: 1

Instrument :
 MSVOA_X
 ClientSampleId :
 TP-GROUNDWATER

Integration Parameters: RTEINT.P

Integrator: RTE
 Smoothing : ON Filtering: 5
 Sampling : 1 Min Area: 3 % of largest Peak
 Start Thrs: 0.2 Max Peaks: 100
 Stop Thrs : 0 Peak Location: TOP

If leading or trailing edge < 100 prefer < Baseline drop else tangent >
 Peak separation: 5

Method : Z:\VOASRV\HPCHEM1\MSVOA_X\METHOD\82X042919W.M
 Title : SW846 8260

Signal : TIC

peak #	R.T. min	first scan	max scan	last scan	PK TY	peak height	corr. area	corr. % max.	% of total
1	1.611	63	75	78	rBV8	5869	12706	1.23%	0.246%
2	2.605	230	238	246	rBV	6044	13447	1.30%	0.260%
3	5.501	700	713	725	rBV2	107377	308027	29.81%	5.952%
4	5.659	728	739	754	rVB	199746	561097	54.30%	10.842%
5	6.061	793	805	818	rBV	134345	355070	34.36%	6.861%
6	6.860	926	936	949	rBV	310566	746798	72.27%	14.431%
7	8.713	1232	1240	1257	rBV	679239	1033383	100.00%	19.969%
8	10.109	1462	1469	1478	rBV	629010	836151	80.91%	16.158%
9	11.134	1631	1637	1652	rBV	486457	616397	59.65%	11.911%
10	12.079	1786	1792	1802	rBV	530361	691907	66.96%	13.370%

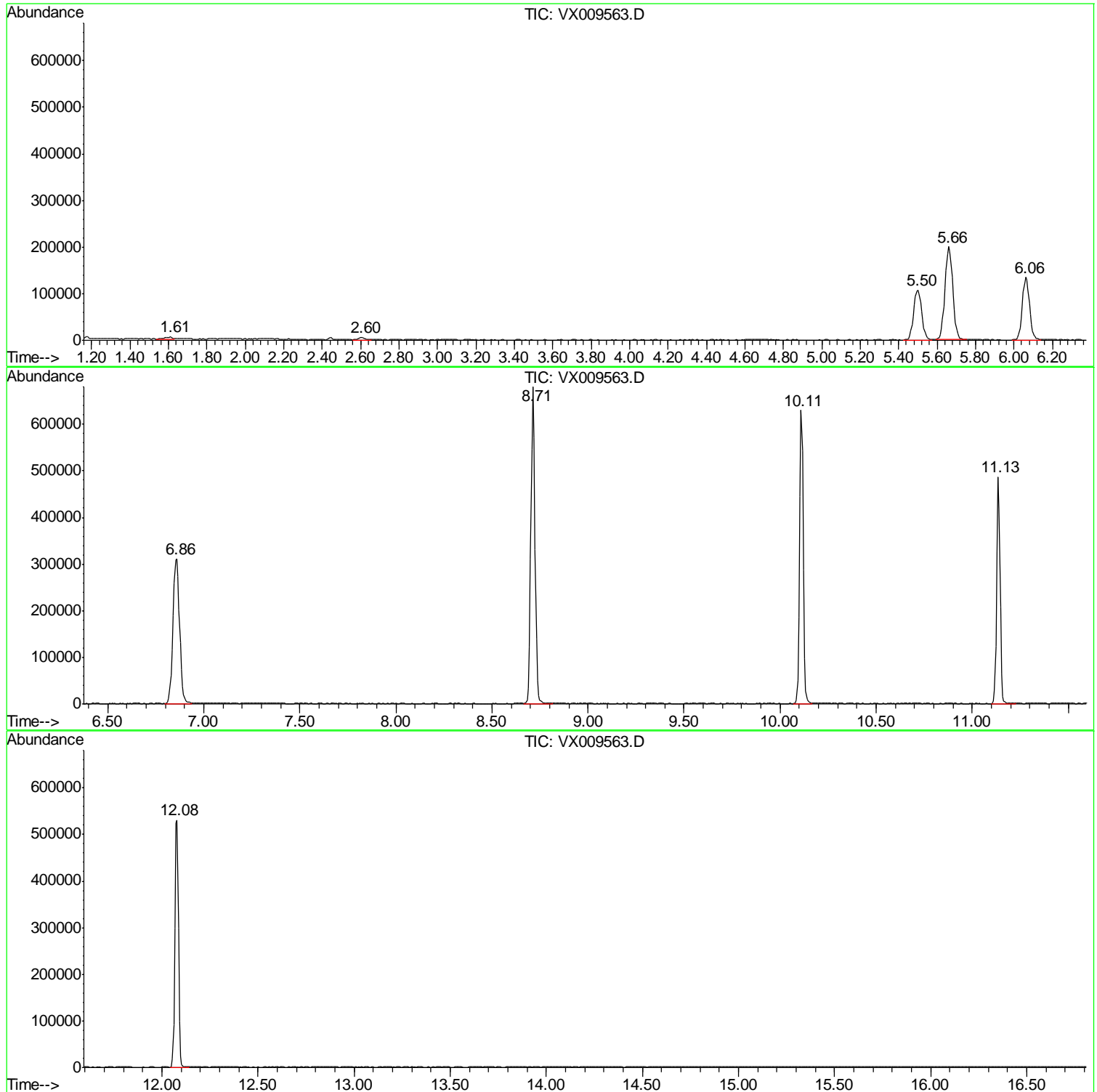
Sum of corrected areas: 5174983

Data Path : Z:\VOASRV\HPCHEM1\MSVOA X\DATA\VX051419\
Data File : VX009563.D
Acq On : 14 May 2019 15:40
Operator : JC/SP
Sample : K2852-01
Misc : 5.0mL/MSVOA X/WATER
ALS Vial : 12 Sample Multiplier: 1

Instrument :
MSVOA_X
ClientSampled :
TP-GROUNDWATER

Quant Method : Z:\VOASRV\HPCHEM1\MSVOA_X\METHOD\82X042919W.M
Quant Title : SW846 8260

TIC Library : C:\DATABASE\NIST11.L
TIC Integration Parameters: LSCINT.P



Data Path : Z:\VOASRV\HPCHEM1\MSVOA_X\DATA\VX051419\
Data File : VX009563.D
Acq On : 14 May 2019 15:40
Operator : JC/SP
Sample : K2852-01
Misc : 5.0mL/MSVOA_X/WATER
ALS Vial : 12 Sample Multiplier: 1

Instrument :
MSVOA_X
ClientSampleId :
TP-GROUNDWATER

Quant Method : Z:\VOASRV\HPCHEM1\MSVOA_X\METHOD\82X042919W.M
Quant Title : SW846 8260

TIC Library : C:\DATABASE\NIST11.L
TIC Integration Parameters: LSCINT.P

No Library Search Compounds Detected

Data Path : Z:\VOASRV\HPCHEM1\MSVOA_X\DATA\VX051419\
Data File : VX009563.D
Acq On : 14 May 2019 15:40
Operator : JC/SP
Sample : K2852-01
Misc : 5.0mL/MSVOA_X/WATER
ALS Vial : 12 Sample Multiplier: 1

Instrument :
MSVOA_X
ClientSampleId :
TP-GROUNDWATER

Quant Method : Z:\VOASRV\HPCHEM1\MSVOA_X\METHOD\82X042919W.M
Quant Title : SW846 8260

TIC Library : C:\DATABASE\NIST11.L
TIC Integration Parameters: LSCINT.P

TIC Top Hit name	RT	EstConc	Units	Response	--Internal Standard--			
					#	RT	Resp	Conc
