

Data Path : Z:\VOASRV\HPCHEM1\MSVOA_X\DATA\VX051420\
 Data File : VX016257.D
 Acq On : 15 May 2020 02:13
 Operator : JC/SP
 Sample : PB128866ZHE#05
 Misc : 5.0mL/MSVOA_X/WATER
 ALS Vial : 43 Sample Multiplier: 1

Instrument :
 MSVOA_X
 ClientSampleId :
 PB128866ZHE#05

Quant Time: May 15 04:20:16 2020
 Quant Method : Z:\VOASRV\HPCHEM1\MSVOA_X\METHOD\82X050420W.M
 Quant Title : SW846 8260
 QLast Update : Wed May 06 06:43:32 2020
 Response via : Initial Calibration

Internal Standards	R.T.	QIon	Response	Conc	Units	Dev(Min)
1) Pentafluorobenzene	5.64	168	253936	50.00	ug/l	0.00
34) 1,4-Difluorobenzene	6.84	114	426565	50.00	ug/l	0.00
63) Chlorobenzene-d5	10.10	117	423203	50.00	ug/l	0.00
72) 1,4-Dichlorobenzene-d4	12.06	152	213307	50.00	ug/l	0.00

System Monitoring Compounds

33) 1,2-Dichloroethane-d4	6.04	65	154217	46.15	ug/l	0.00
Spiked Amount	50.000		Recovery	=	92.30%	
35) Dibromofluoromethane	5.47	113	126755	46.90	ug/l	0.00
Spiked Amount	50.000		Recovery	=	93.80%	
50) Toluene-d8	8.70	98	528095	50.72	ug/l	0.00
Spiked Amount	50.000		Recovery	=	101.44%	
62) 4-Bromofluorobenzene	11.12	95	211116	53.30	ug/l	0.00
Spiked Amount	50.000		Recovery	=	106.60%	

Target Compounds

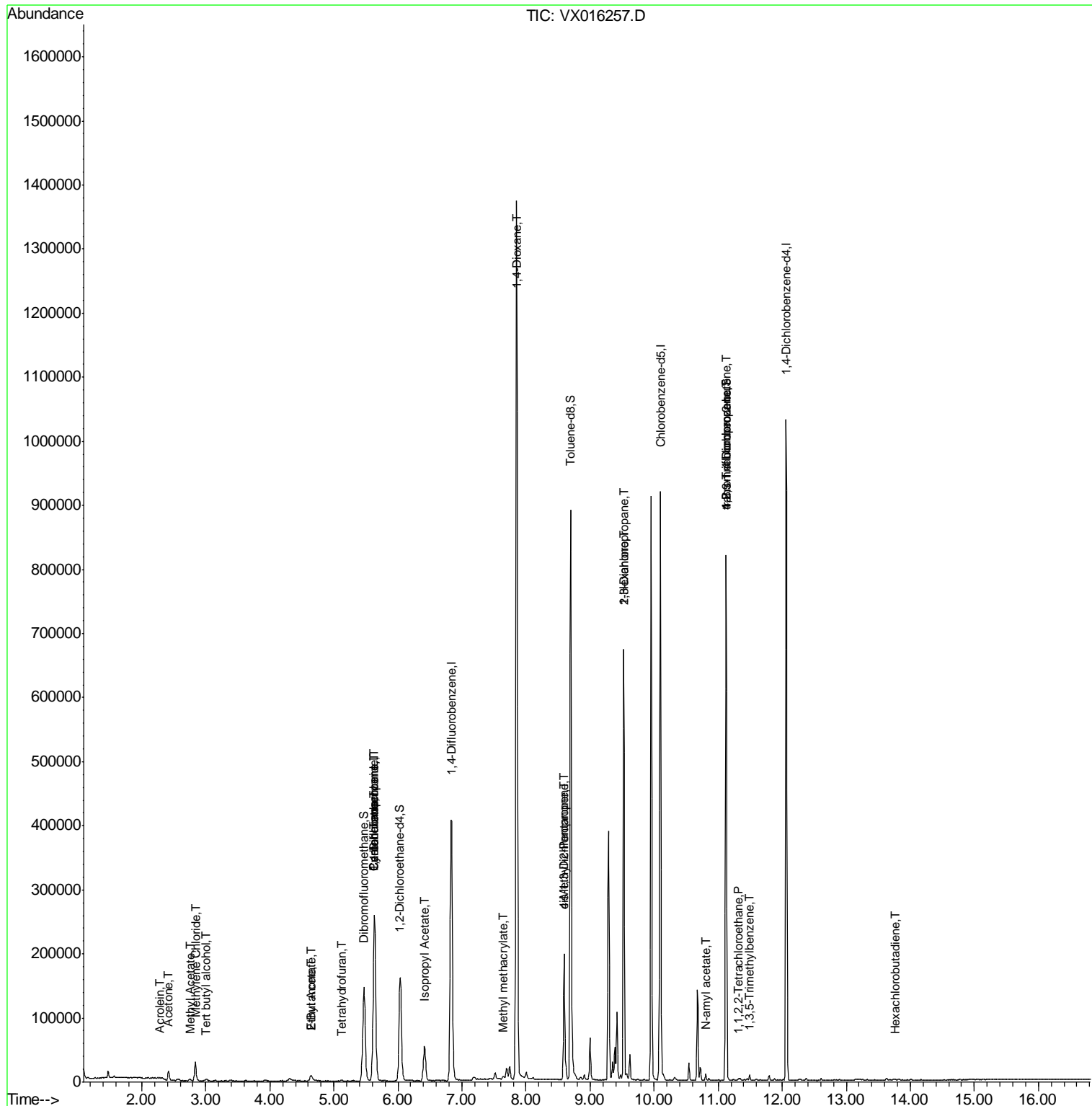
						Qvalue
11) Tert butyl alcohol	3.01	59	2553	3.02	ug/l #	93
13) Acrolein	2.28	56	637	1.20	ug/l #	52
16) Acetone	2.42	43	13880	9.31	ug/l	99
17) Carbon Disulfide	2.55	76	1479	Below Cal	#	85
18) Methyl Acetate	2.75	43	3061	0.83	ug/l	98
20) Methylene Chloride	2.84	84	13343	4.34	ug/l	97
25) 2-Butanone	4.64	43	11634	4.84	ug/l	98
29) Tetrahydrofuran	5.12	42	1292	0.81	ug/l #	60
31) Cyclohexane	5.64	56	5123	1.10	ug/l #	1
36) 1,1-Dichloropropene	5.63	75	19063	4.54	ug/l #	49
37) Ethyl Acetate	4.64	43	11634	2.39	ug/l #	67
38) Carbon Tetrachloride	5.64	117	24646	5.77	ug/l #	15
43) Isopropyl Acetate	6.42	43	73170	9.42	ug/l	99
48) Methyl methacrylate	7.65	41	5052	1.37	ug/l #	14
49) 1,4-Dioxane	7.85	88	210	2.38	ug/l #	1
51) 4-Methyl-2-Pentanone	8.59	43	68450	14.41	ug/l #	46
54) cis-1,3-Dichloropropene	8.60	75	34027	6.35	ug/l #	54
57) 1,3-Dichloropropane	9.52	76	6109	1.16	ug/l #	46
59) 2-Hexanone	9.52	43	72358	19.39	ug/l #	51
74) N-amyl acetate	10.81	43	4905	0.68	ug/l #	46
75) 1,1,2,2-Tetrachloroethane	11.32	83	82	2.08	ug/l #	26
76) 1,2,3-Trichloropropane	11.12	75	105313	21.76	ug/l #	35
80) 1,3,5-Trimethylbenzene	11.49	105	3194	0.24	ug/l	97
81) trans-1,4-Dichloro-2-buten	11.12	75	105313	51.85	ug/l #	13
94) Hexachlorobutadiene	13.77	225	221	0.62	ug/l	90

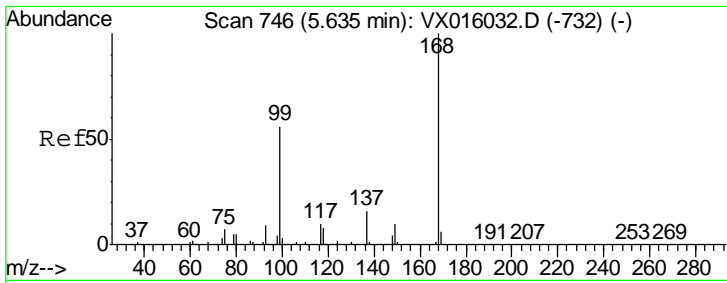
(#) = qualifier out of range (m) = manual integration (+) = signals summed

Data Path : Z:\VOASRV\HPCHEM1\MSVOA_X\DATA\VX051420\
 Data File : VX016257.D
 Acq On : 15 May 2020 02:13
 Operator : JC/SP
 Sample : PB128866ZHE#05
 Misc : 5.0mL/MSVOA_X/WATER
 ALS Vial : 43 Sample Multiplier: 1

Instrument :
 MSVOA_X
 ClientSampleId :
 PB128866ZHE#05

Quant Time: May 15 04:20:16 2020
 Quant Method : Z:\VOASRV\HPCHEM1\MSVOA_X\METHOD\82X050420W.M
 Quant Title : SW846 8260
 QLast Update : Wed May 06 06:43:32 2020
 Response via : Initial Calibration

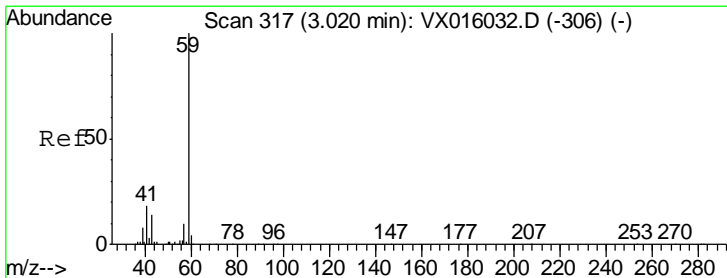
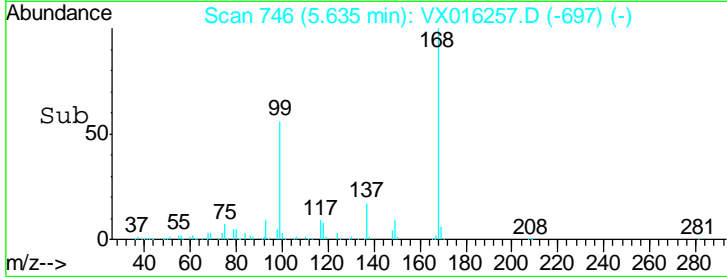
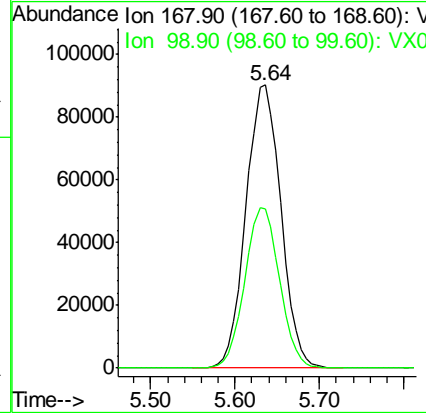
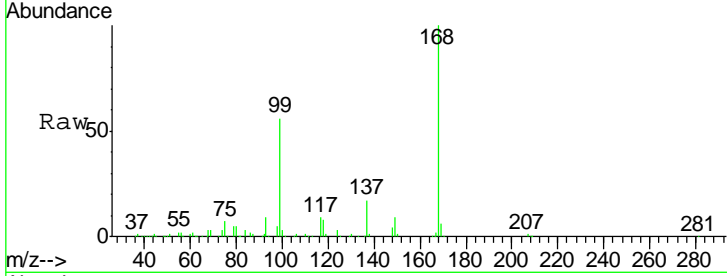




#1
 Pentafluorobenzene
 Concen: 50.00 ug/l
 RT: 5.64 min Scan# 746
 Delta R.T. 0.00 min
 Lab File: VX016257.D
 Acq: 15 May 2020 02:13

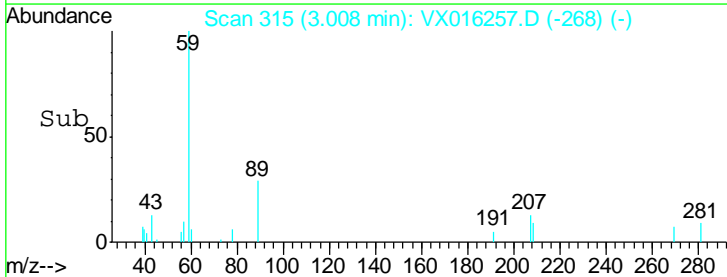
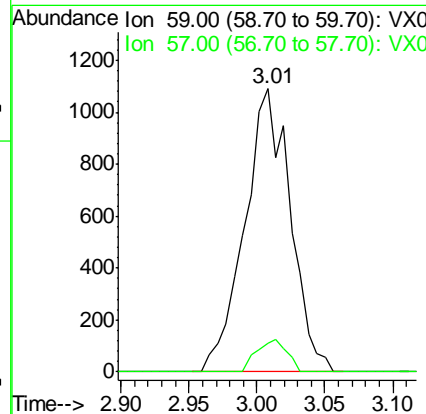
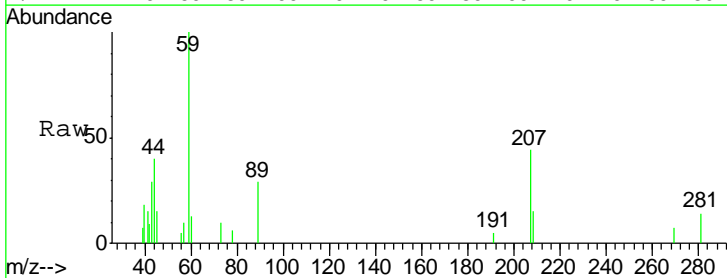
Instrument : MSVOA_X
 ClientSampled : PB128866ZHE#05

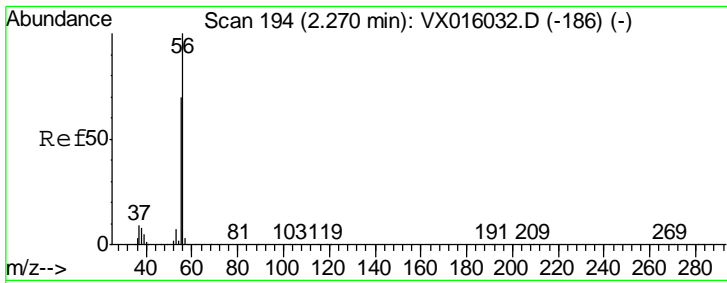
Tgt Ion	Resp	Lower	Upper
168	100		
99	56.4	45.0	67.4



#11
 Tert butyl alcohol
 Concen: 3.02 ug/l
 RT: 3.01 min Scan# 315
 Delta R.T. -0.01 min
 Lab File: VX016257.D
 Acq: 15 May 2020 02:13

Tgt Ion	Resp	Lower	Upper
59	100		
57	7.6	8.2	12.4#

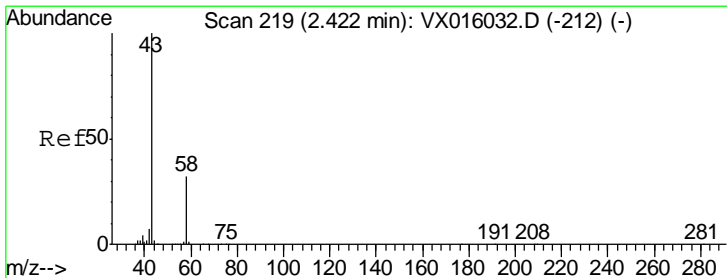
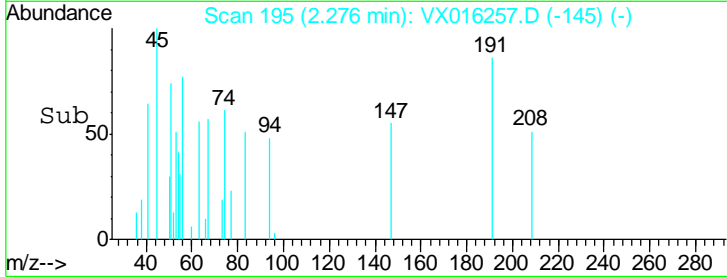
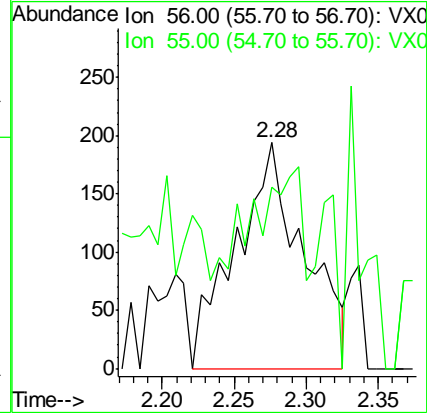
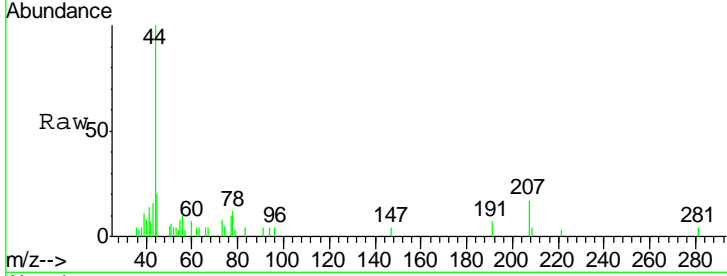




#13
 Acrolein
 Concen: 1.20 ug/l
 RT: 2.28 min Scan# 195
 Delta R.T. 0.01 min
 Lab File: VX016257.D
 Acq: 15 May 2020 02:13

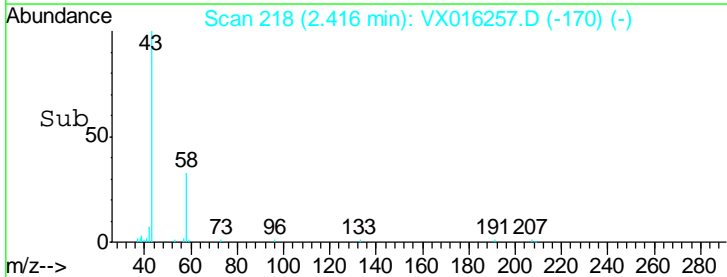
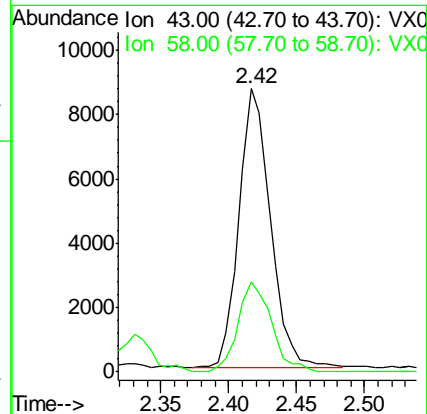
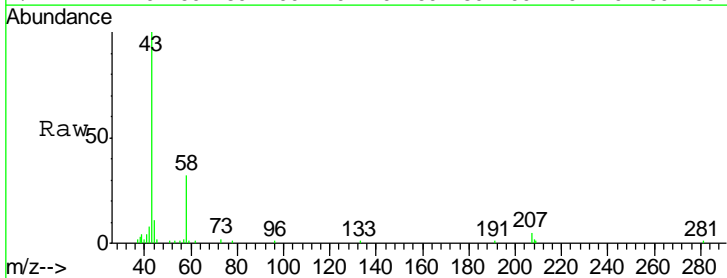
Instrument :
 MSVOA_X
 ClientSampled :
 PB128866ZHE#05

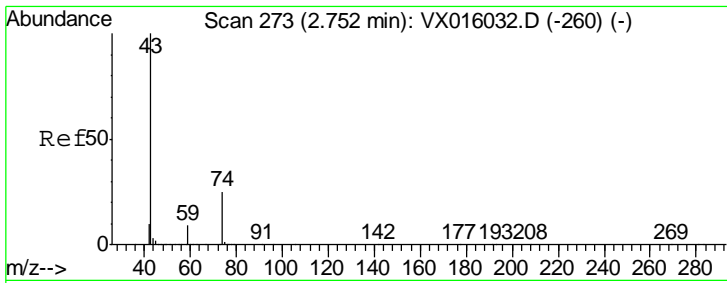
Tgt Ion: 56 Resp: 637
 Ion Ratio Lower Upper
 56 100
 55 31.1 56.5 84.7#



#16
 Acetone
 Concen: 9.31 ug/l
 RT: 2.42 min Scan# 218
 Delta R.T. -0.01 min
 Lab File: VX016257.D
 Acq: 15 May 2020 02:13

Tgt Ion: 43 Resp: 13880
 Ion Ratio Lower Upper
 43 100
 58 32.3 25.4 38.0

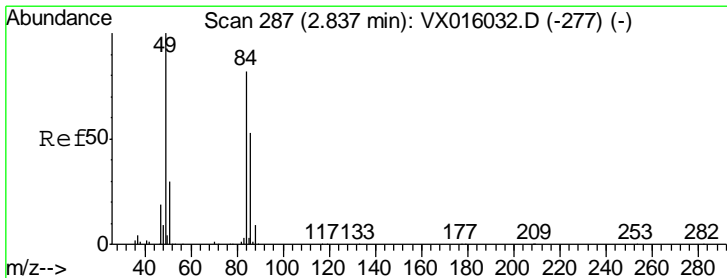
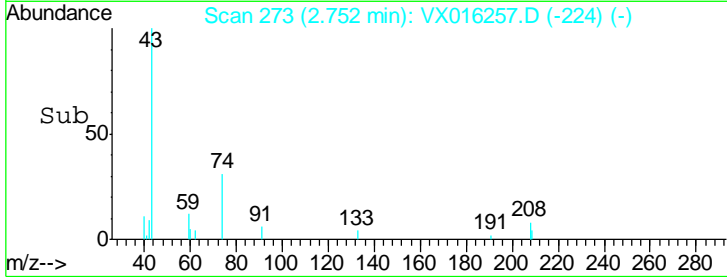
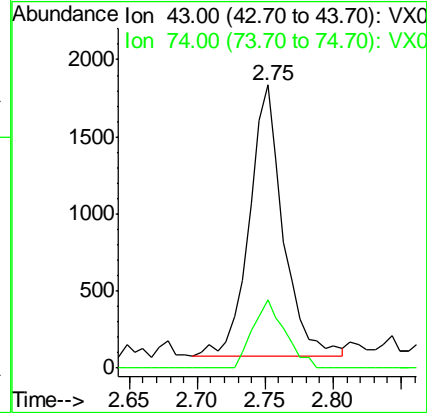
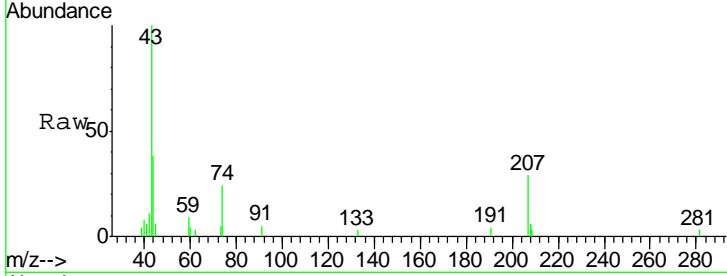




#18
 Methyl Acetate
 Concen: 0.83 ug/l
 RT: 2.75 min Scan# 273
 Delta R.T. 0.00 min
 Lab File: VX016257.D
 Acq: 15 May 2020 02:13

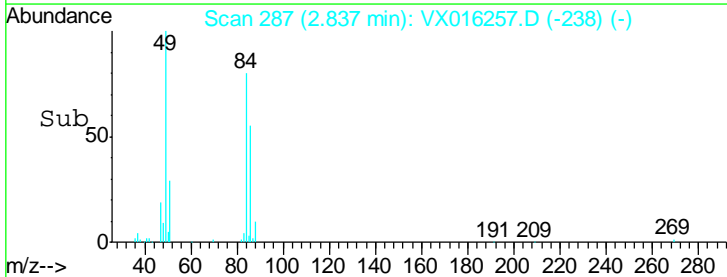
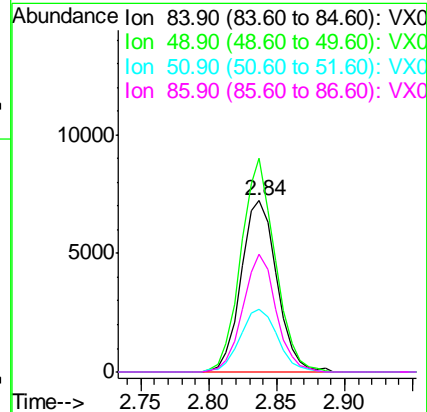
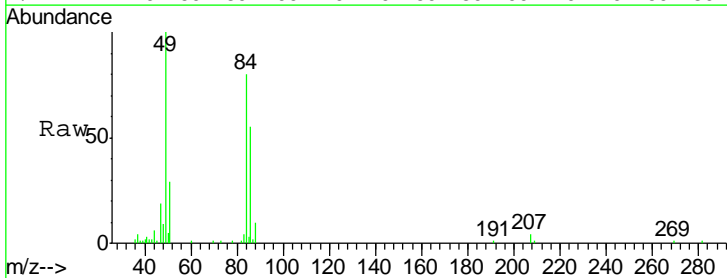
Instrument :
 MSVOA_X
 ClientSampleId :
 PB128866ZHE#05

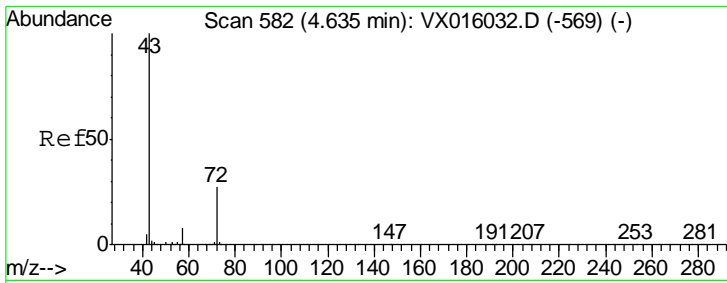
Tgt Ion: 43 Resp: 3061
 Ion Ratio Lower Upper
 43 100
 74 24.1 20.2 30.2



#20
 Methylene Chloride
 Concen: 4.34 ug/l
 RT: 2.84 min Scan# 287
 Delta R.T. 0.00 min
 Lab File: VX016257.D
 Acq: 15 May 2020 02:13

Tgt Ion: 84 Resp: 13343
 Ion Ratio Lower Upper
 84 100
 49 124.8 97.3 145.9
 51 36.7 29.3 43.9
 86 69.1 51.3 76.9

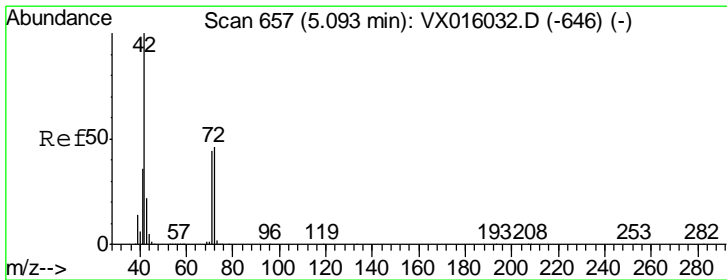
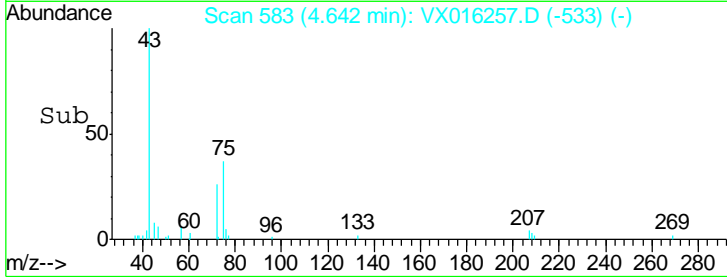
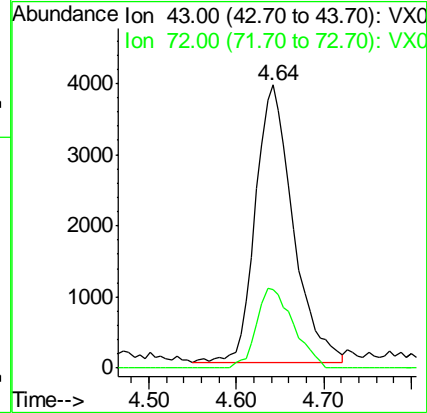
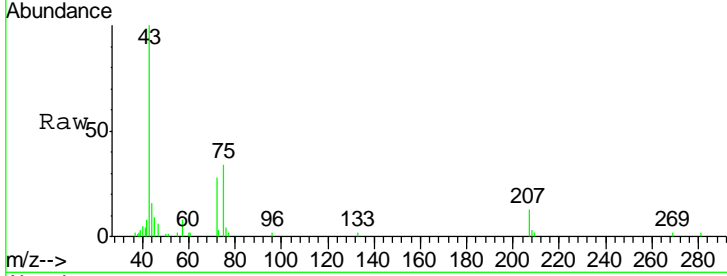




#25
 2-Butanone
 Concen: 4.84 ug/l
 RT: 4.64 min Scan# 583
 Delta R.T. 0.01 min
 Lab File: VX016257.D
 Acq: 15 May 2020 02:13

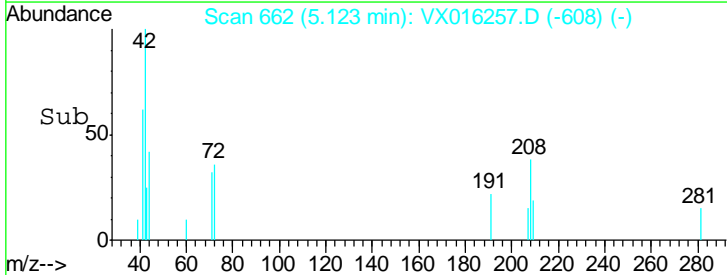
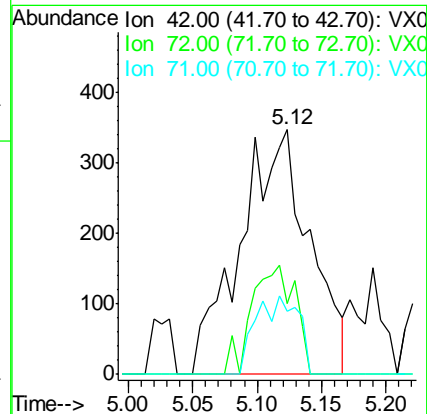
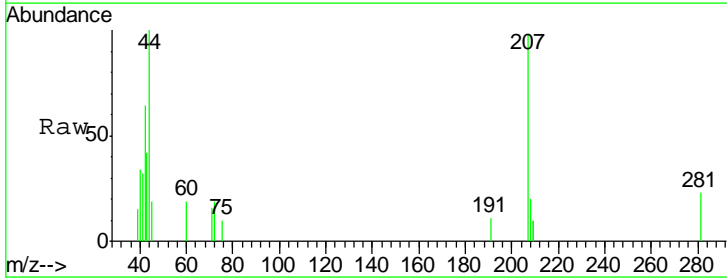
Instrument :
 MSVOA_X
 ClientSampled :
 PB128866ZHE#05

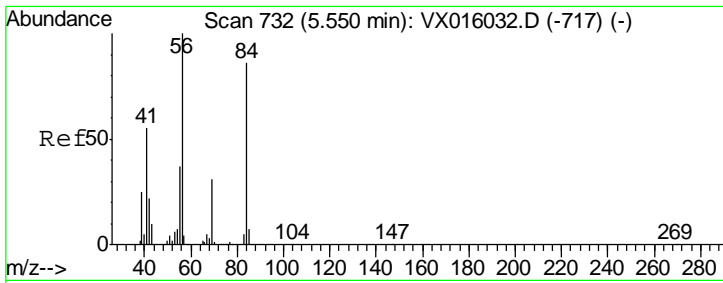
Tgt Ion	Resp	Lower	Upper
43	11634		
72	28.6	21.8	32.8



#29
 Tetrahydrofuran
 Concen: 0.81 ug/l
 RT: 5.12 min Scan# 662
 Delta R.T. 0.03 min
 Lab File: VX016257.D
 Acq: 15 May 2020 02:13

Tgt Ion	Resp	Lower	Upper
42	1292		
72	27.7	37.1	55.7#
71	8.7	34.5	51.7#

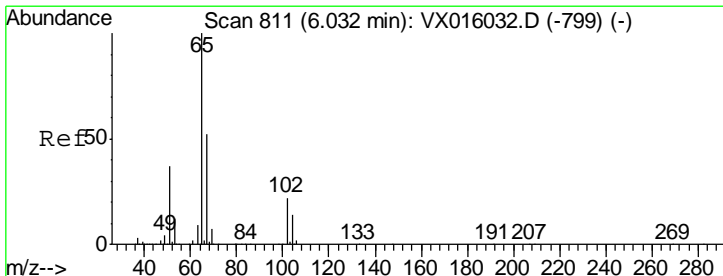
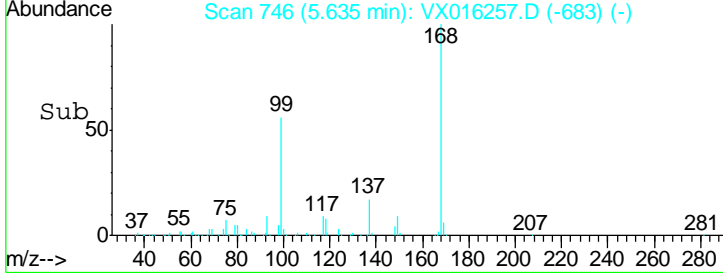
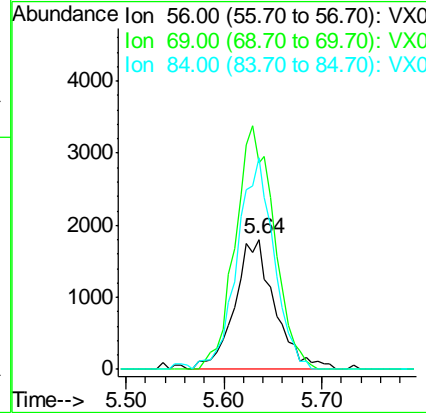
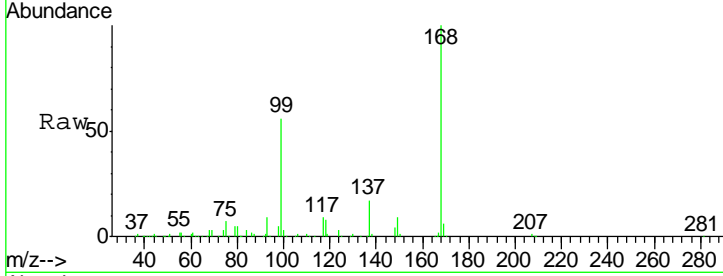




#31
 Cyclohexane
 Concen: 1.10 ug/l
 RT: 5.64 min Scan# 746
 Delta R.T. 0.09 min
 Lab File: VX016257.D
 Acq: 15 May 2020 02:13

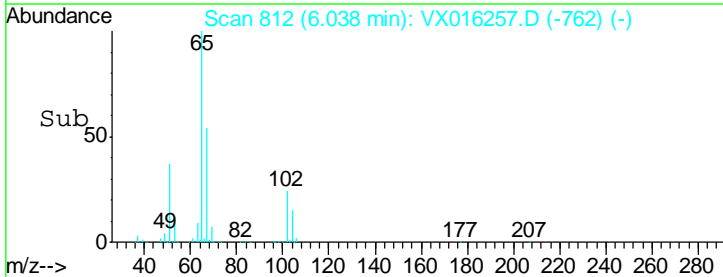
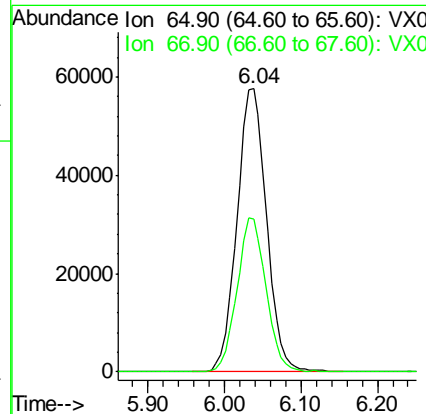
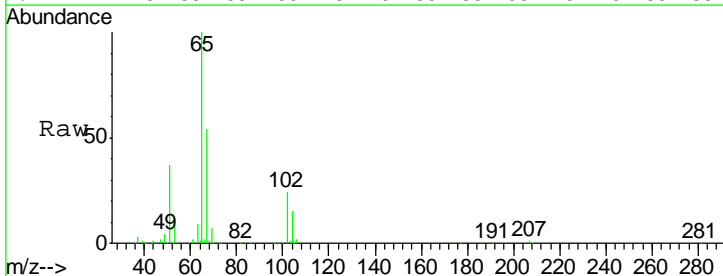
Instrument : MSVOA_X
 ClientSampled : PB128866ZHE#05

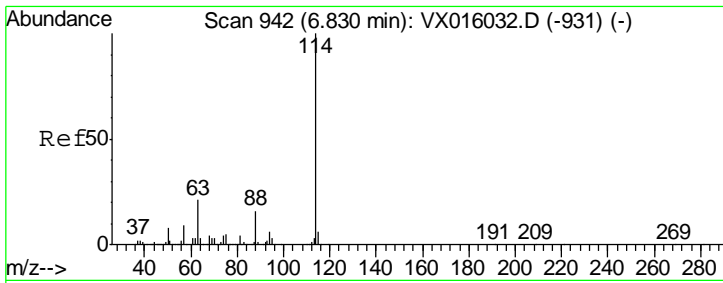
Tgt Ion	Resp	Lower	Upper
56	5123		
69	154.8	25.0	37.6#
84	158.3	69.0	103.6#



#33
 1,2-Dichloroethane-d4
 Concen: 46.15 ug/l
 RT: 6.04 min Scan# 812
 Delta R.T. 0.01 min
 Lab File: VX016257.D
 Acq: 15 May 2020 02:13

Tgt Ion	Resp	Lower	Upper
65	154217		
67	53.4	0.0	104.8

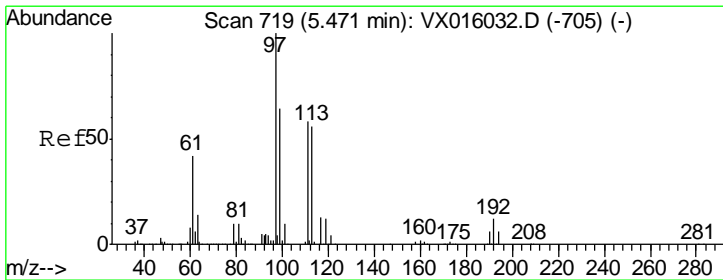
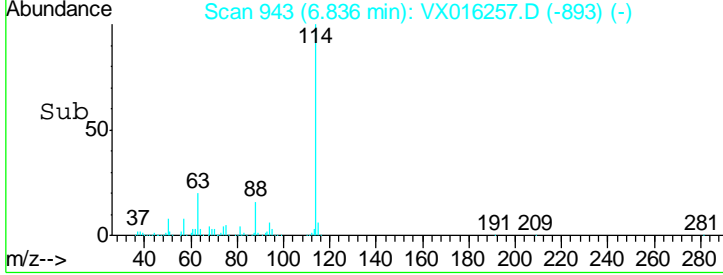
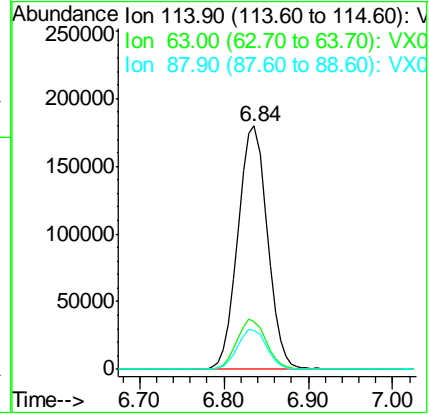
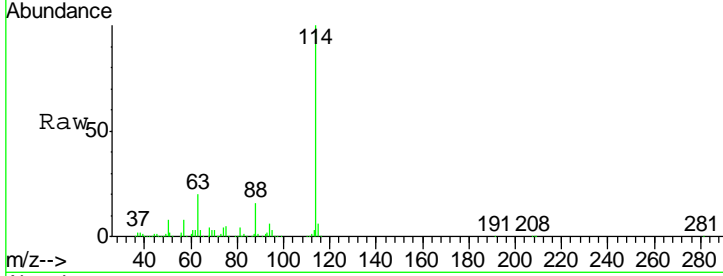




#34
 1,4-Difluorobenzene
 Concen: 50.00 ug/l
 RT: 6.84 min Scan# 943
 Delta R.T. 0.01 min
 Lab File: VX016257.D
 Acq: 15 May 2020 02:13

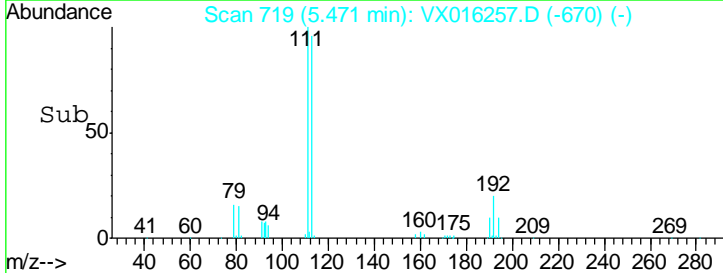
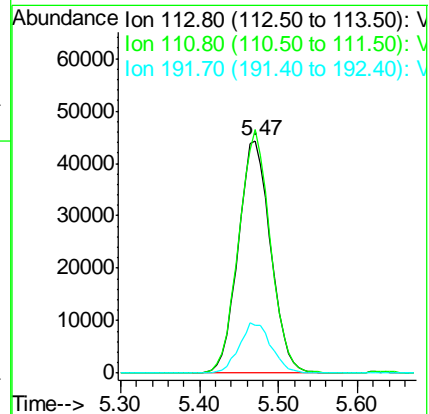
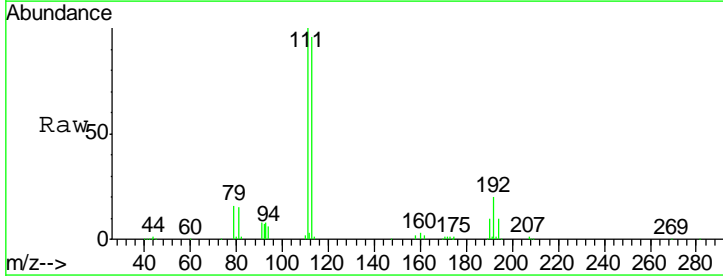
Instrument : MSVOA_X
 ClientSampleId : PB128866ZHE#05

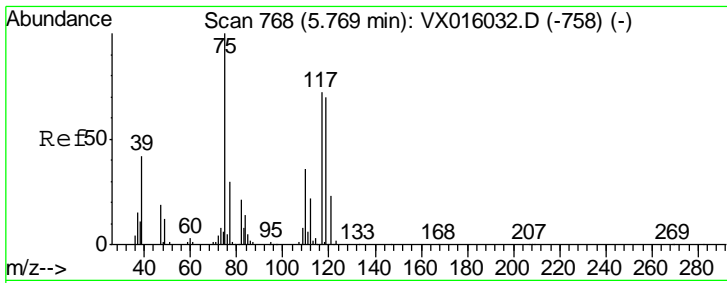
Tgt Ion	Resp	Lower	Upper
114	100		
63	19.9	0.0	42.8
88	16.1	0.0	31.4



#35
 Dibromofluoromethane
 Concen: 46.90 ug/l
 RT: 5.47 min Scan# 719
 Delta R.T. 0.00 min
 Lab File: VX016257.D
 Acq: 15 May 2020 02:13

Tgt Ion	Resp	Lower	Upper
113	100		
111	102.1	81.6	122.4
192	21.5	17.0	25.4

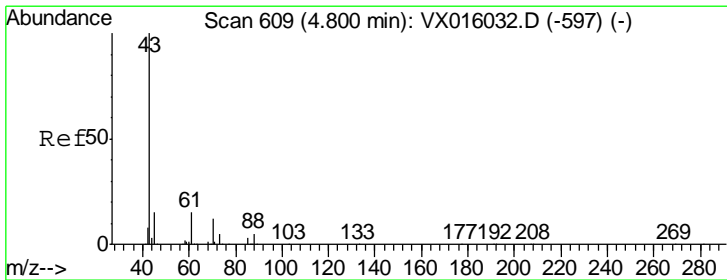
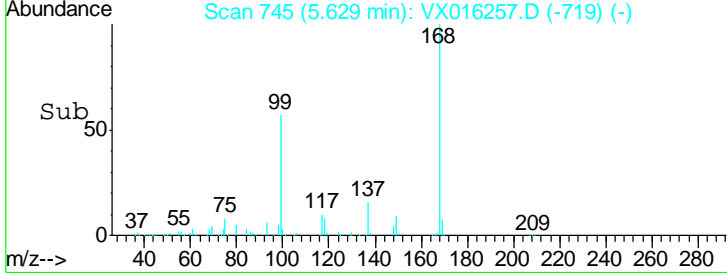
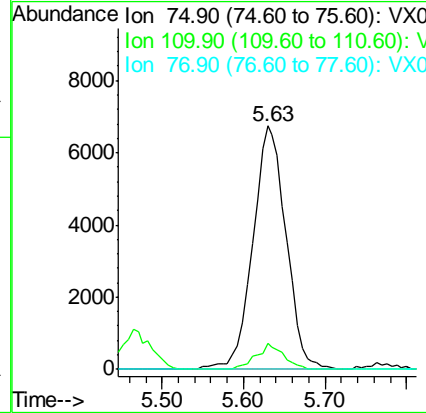
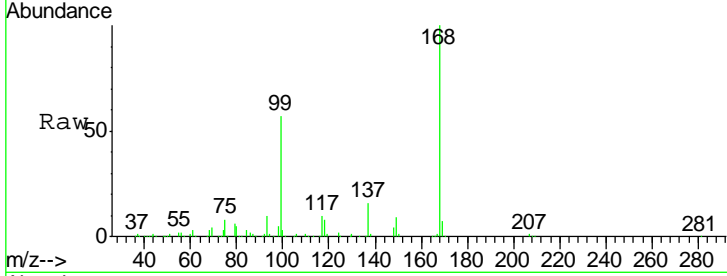




#36
 1,1-Dichloropropene
 Concen: 4.54 ug/l
 RT: 5.63 min Scan# 745
 Delta R.T. -0.14 min
 Lab File: VX016257.D
 Acq: 15 May 2020 02:13

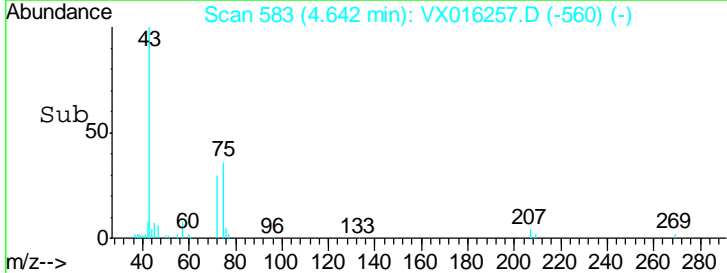
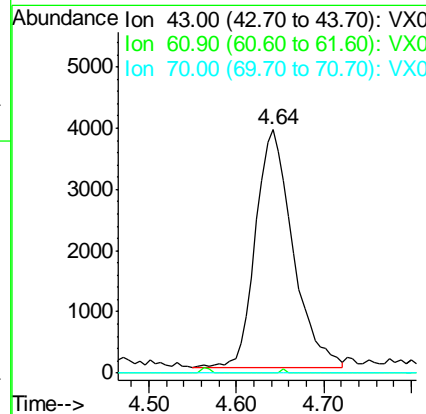
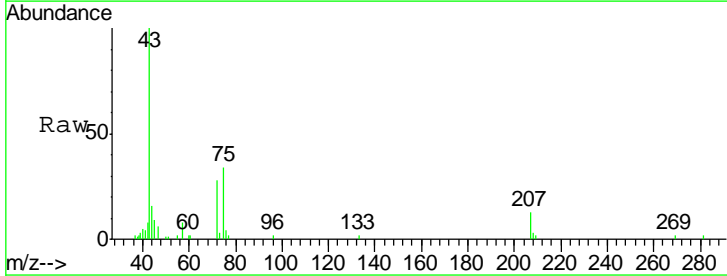
Instrument :
 MSVOA_X
 ClientSampled :
 PB128866ZHE#05

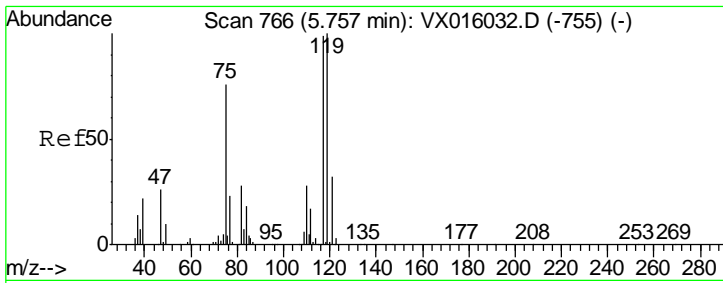
Tgt Ion	Resp	Lower	Upper
75	19063		
110	8.8	18.1	54.1#
77	0.0	25.0	37.6#



#37
 Ethyl Acetate
 Concen: 2.39 ug/l
 RT: 4.64 min Scan# 583
 Delta R.T. -0.16 min
 Lab File: VX016257.D
 Acq: 15 May 2020 02:13

Tgt Ion	Resp	Lower	Upper
43	11634		
61	0.2	11.7	17.5#
70	0.0	9.3	13.9#

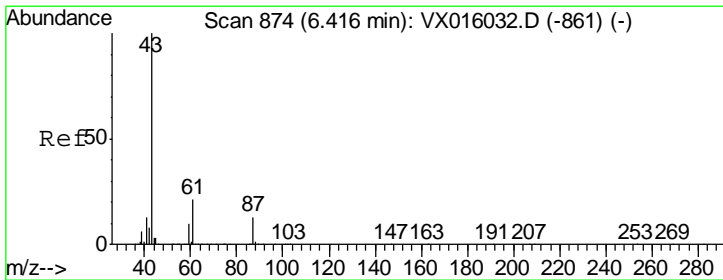
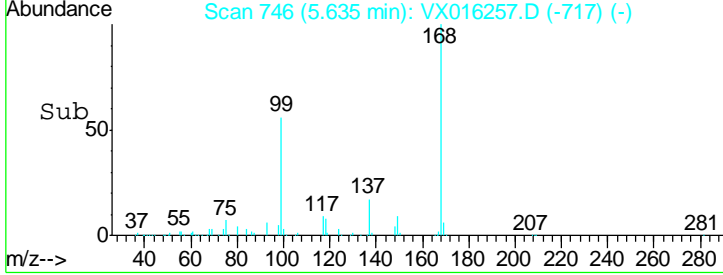
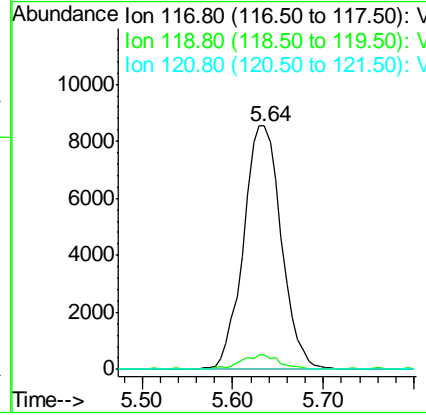
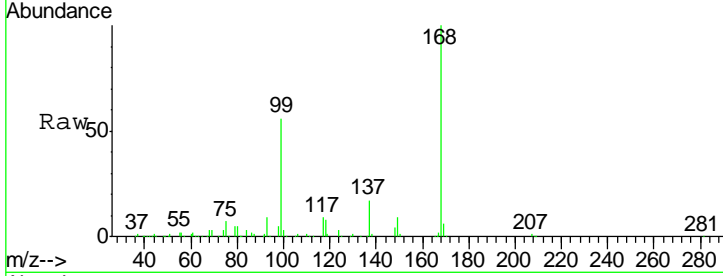




#38
 Carbon Tetrachloride
 Concen: 5.77 ug/l
 RT: 5.64 min Scan# 746
 Delta R.T. -0.12 min
 Lab File: VX016257.D
 Acq: 15 May 2020 02:13

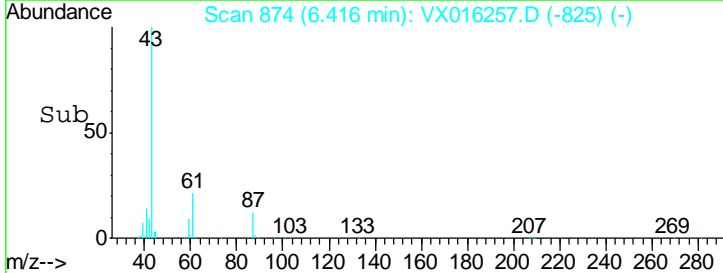
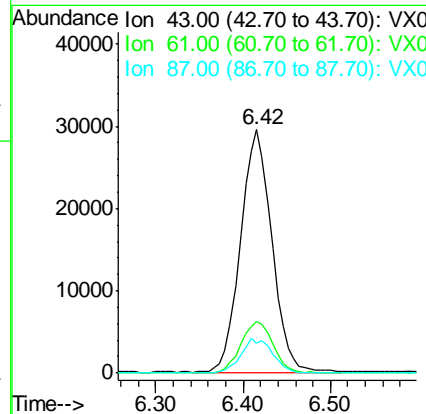
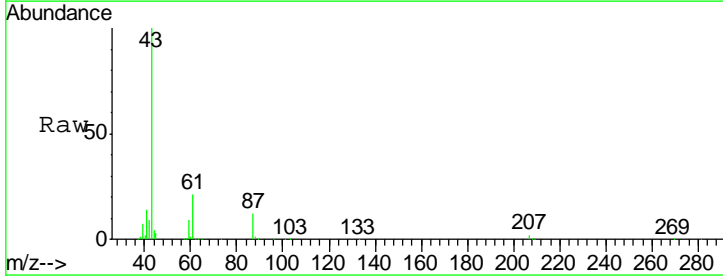
Instrument :
 MSVOA_X
 ClientSampleId :
 PB128866ZHE#05

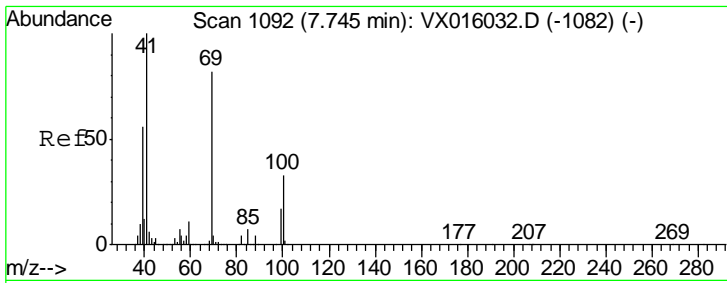
Tgt Ion	Resp	Lower	Upper
117	24646		
117	100		
119	5.9	80.3	120.5#
121	0.0	25.7	38.5#



#43
 Isopropyl Acetate
 Concen: 9.42 ug/l
 RT: 6.42 min Scan# 874
 Delta R.T. 0.00 min
 Lab File: VX016257.D
 Acq: 15 May 2020 02:13

Tgt Ion	Resp	Lower	Upper
43	73170		
43	100		
61	21.8	17.0	25.4
87	14.4	11.0	16.6

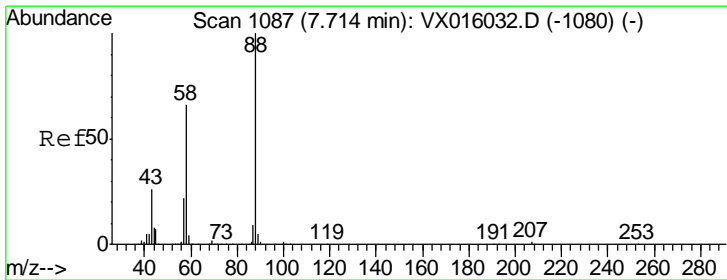
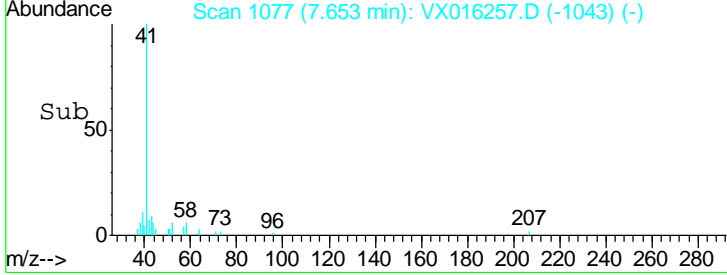
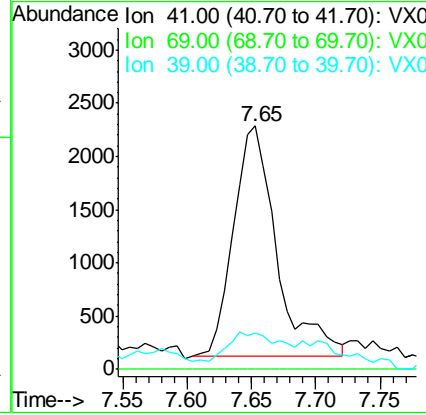
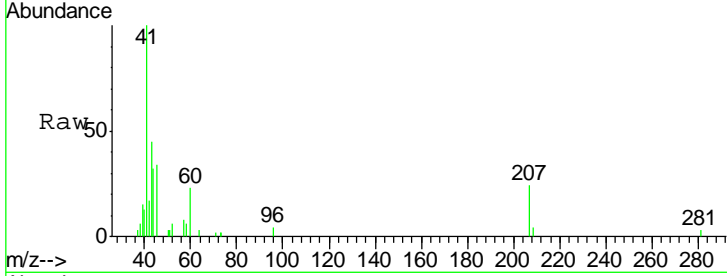




#48
 Methyl methacrylate
 Concen: 1.37 ug/l
 RT: 7.65 min Scan# 1077
 Delta R.T. -0.09 min
 Lab File: VX016257.D
 Acq: 15 May 2020 02:13

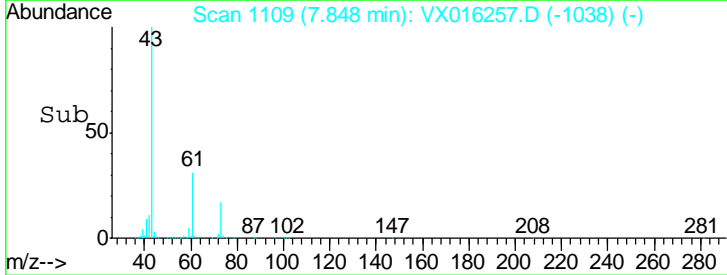
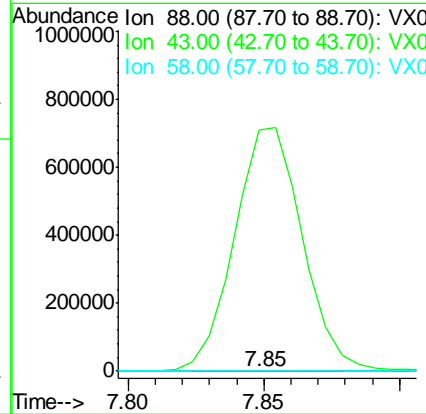
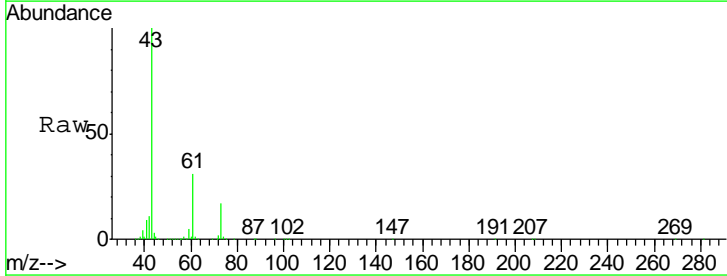
Instrument : MSVOA_X
 ClientSampleId : PB128866ZHE#05

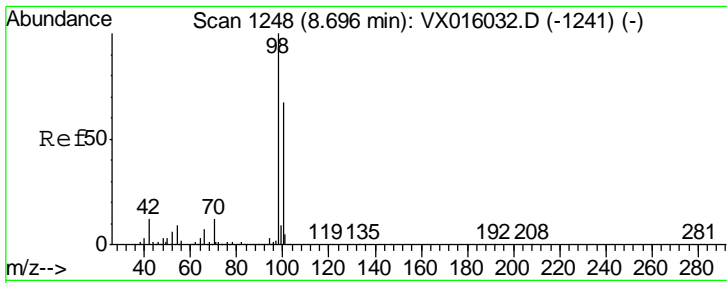
Tgt Ion	Resp	Lower	Upper
41	100		
69	0.0	67.8	101.6#
39	0.0	44.6	67.0#



#49
 1,4-Dioxane
 Concen: 2.38 ug/l
 RT: 7.85 min Scan# 1109
 Delta R.T. 0.13 min
 Lab File: VX016257.D
 Acq: 15 May 2020 02:13

Tgt Ion	Resp	Lower	Upper
88	100		
43	596247.1	25.3	37.9#
58	2504.8	55.9	83.9#

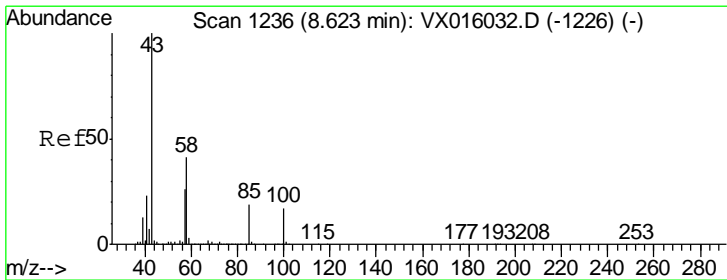
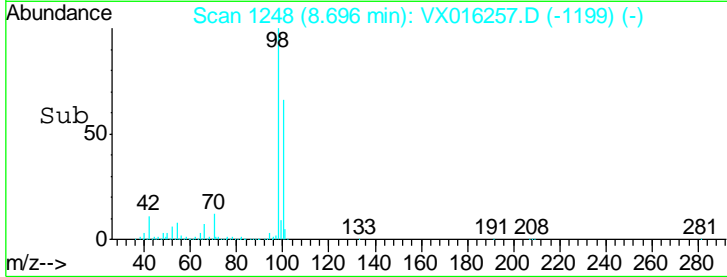
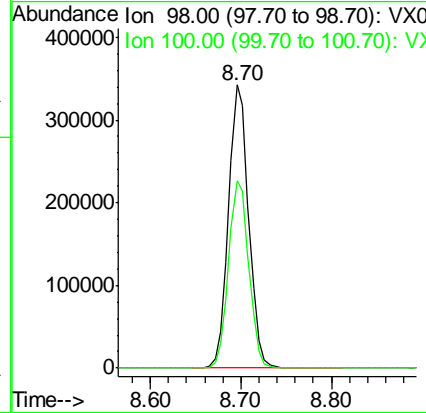
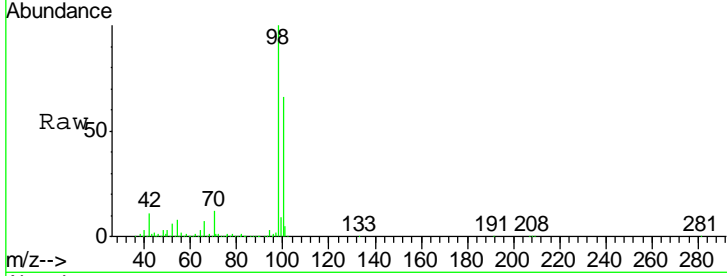




#50
 Toluene-d8
 Concen: 50.72 ug/l
 RT: 8.70 min Scan# 1248
 Delta R.T. 0.00 min
 Lab File: VX016257.D
 Acq: 15 May 2020 02:13

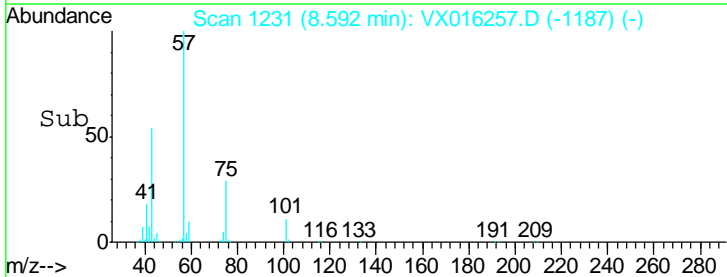
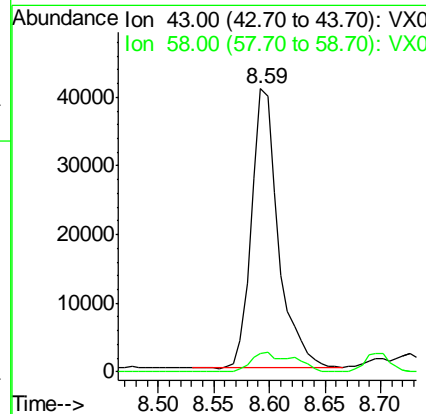
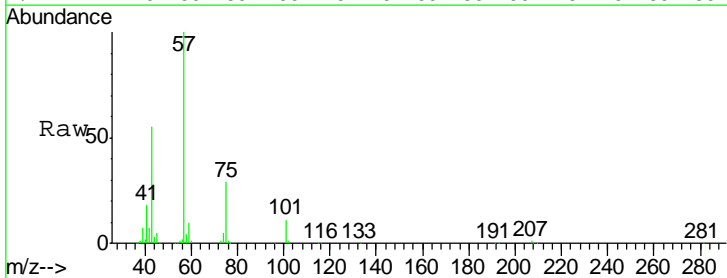
Instrument : MSVOA_X
 ClientSampleId : PB128866ZHE#05

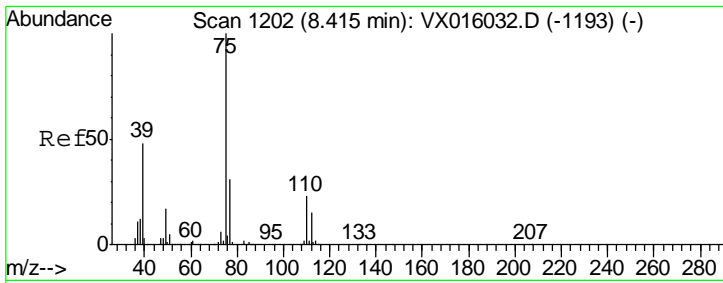
Tgt Ion: 98 Resp: 528095
 Ion Ratio Lower Upper
 98 100
 100 67.1 53.7 80.5



#51
 4-Methyl-2-Pentanone
 Concen: 14.41 ug/l
 RT: 8.59 min Scan# 1231
 Delta R.T. -0.03 min
 Lab File: VX016257.D
 Acq: 15 May 2020 02:13

Tgt Ion: 43 Resp: 68450
 Ion Ratio Lower Upper
 43 100
 58 7.1 33.0 49.4#

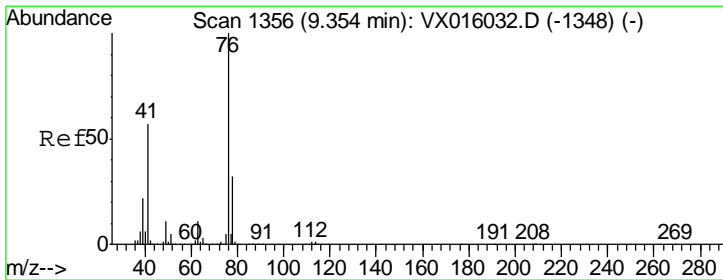
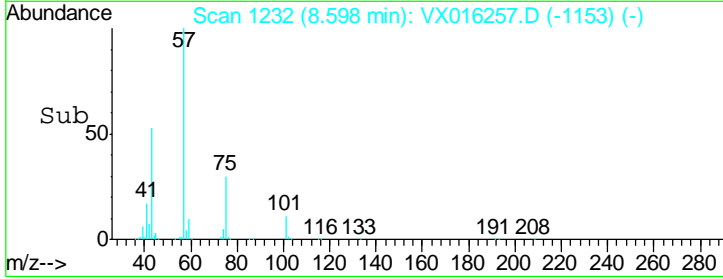
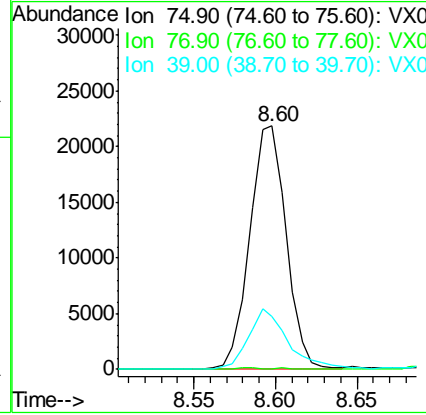
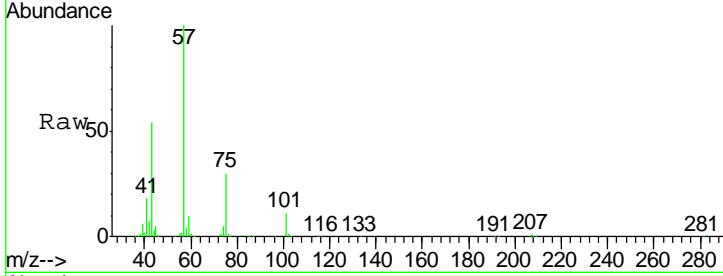




#54
 cis-1,3-Dichloropropene
 Concen: 6.35 ug/l
 RT: 8.60 min Scan# 1232
 Delta R.T. 0.18 min
 Lab File: VX016257.D
 Acq: 15 May 2020 02:13

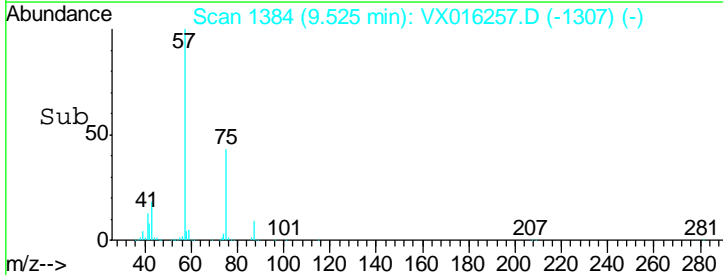
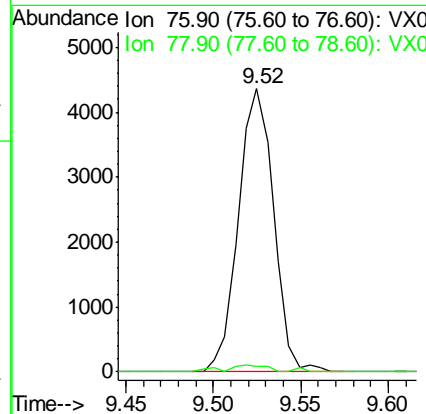
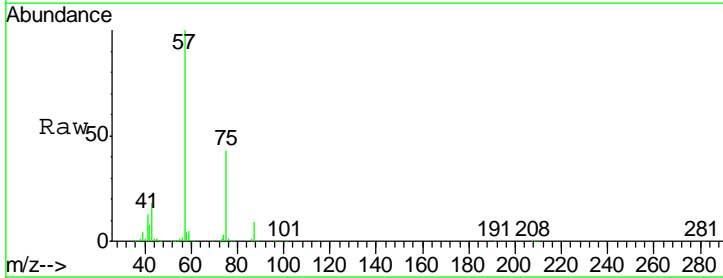
Instrument :
 MSVOA_X
 ClientSampleId :
 PB128866ZHE#05

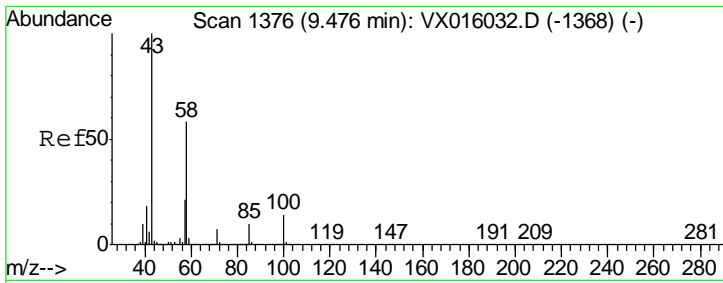
Tgt Ion	Resp	Lower	Upper
75	100		
77	0.3	24.7	37.1#
39	21.7	38.7	58.1#



#57
 1,3-Dichloropropane
 Concen: 1.16 ug/l
 RT: 9.52 min Scan# 1384
 Delta R.T. 0.17 min
 Lab File: VX016257.D
 Acq: 15 May 2020 02:13

Tgt Ion	Resp	Lower	Upper
76	100		
78	2.1	25.9	38.9#

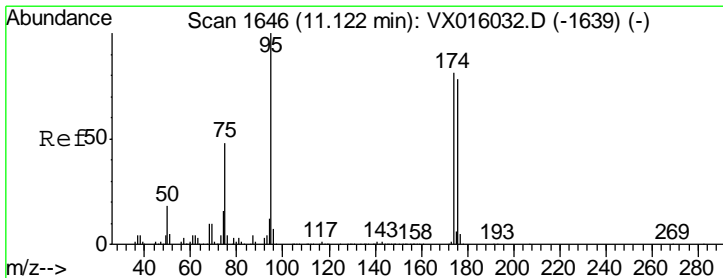
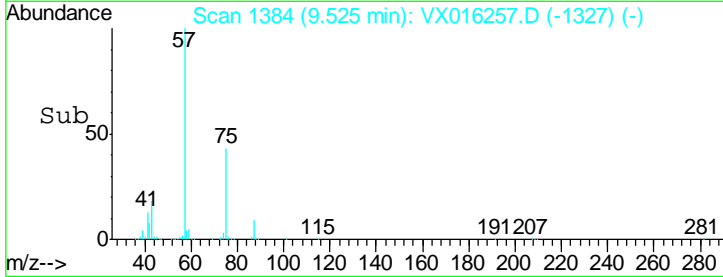
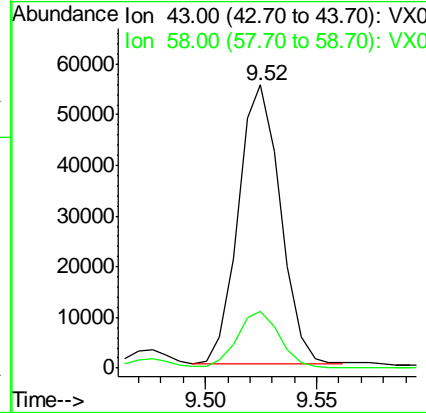
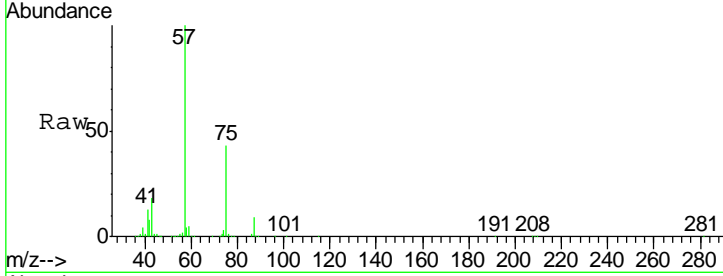




#59
 2-Hexanone
 Concen: 19.39 ug/l
 RT: 9.52 min Scan# 1384
 Delta R.T. 0.05 min
 Lab File: VX016257.D
 Acq: 15 May 2020 02:13

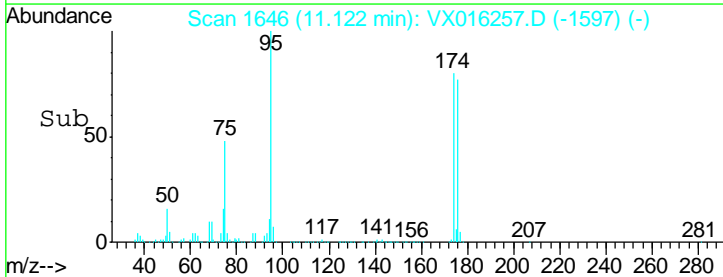
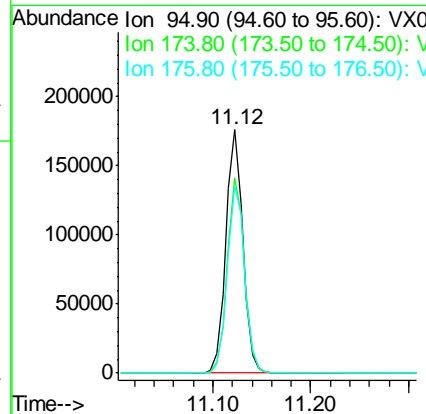
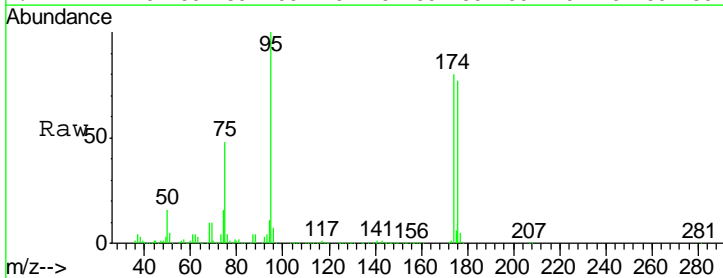
Instrument : MSVOA_X
 ClientSampleId : PB128866ZHE#05

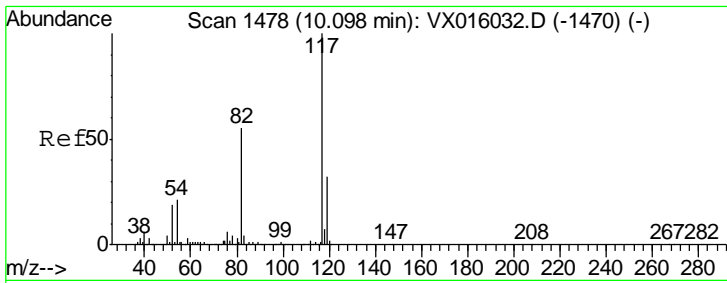
Tgt Ion: 43 Resp: 72358
 Ion Ratio Lower Upper
 43 100
 58 21.0 28.6 85.9#



#62
 4-Bromofluorobenzene
 Concen: 53.30 ug/l
 RT: 11.12 min Scan# 1646
 Delta R.T. 0.00 min
 Lab File: VX016257.D
 Acq: 15 May 2020 02:13

Tgt Ion: 95 Resp: 211116
 Ion Ratio Lower Upper
 95 100
 174 81.1 0.0 159.4
 176 78.7 0.0 157.6

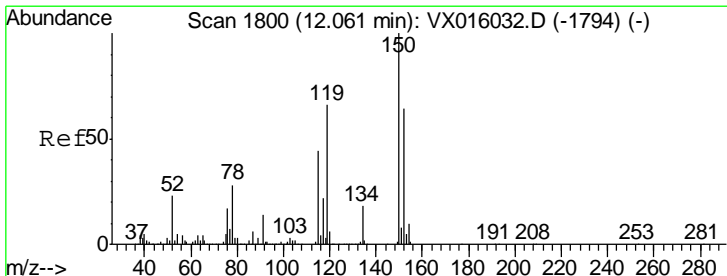
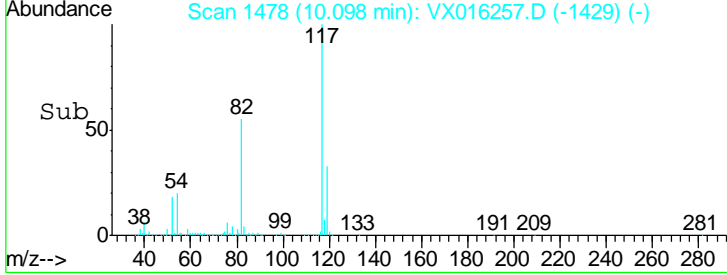
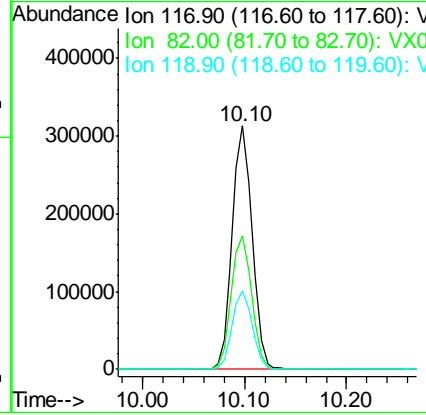
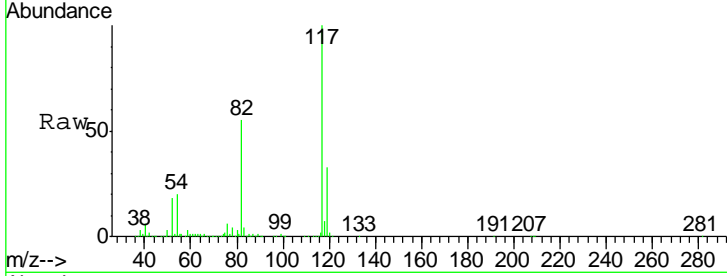




#63
 Chlorobenzene-d5
 Concen: 50.00 ug/l
 RT: 10.10 min Scan# 1478
 Delta R.T. 0.00 min
 Lab File: VX016257.D
 Acq: 15 May 2020 02:13

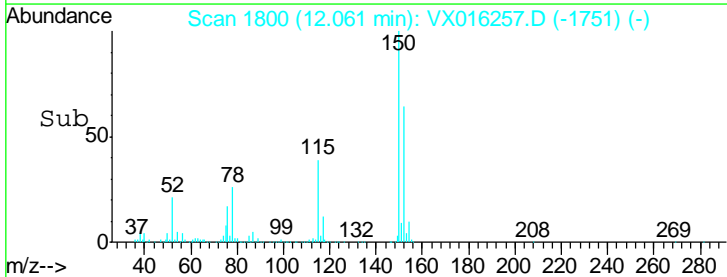
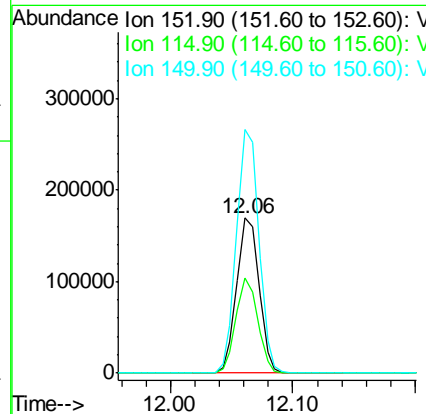
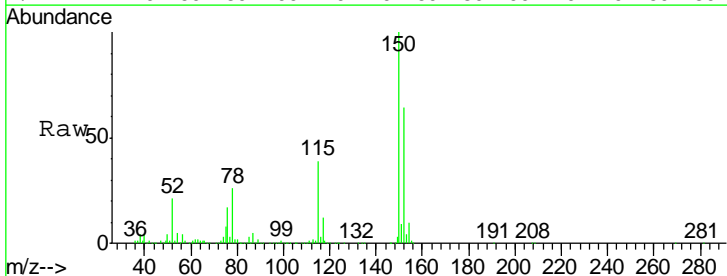
Instrument : MSVOA_X
 ClientSampled : PB128866ZHE#05

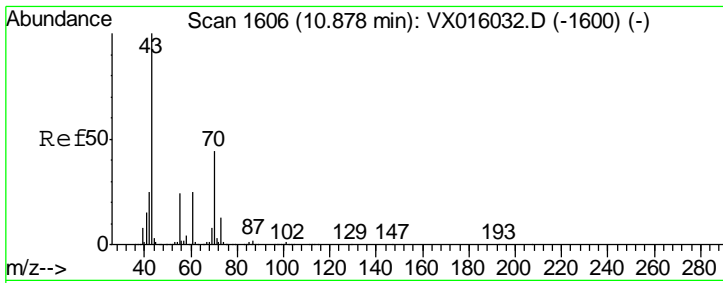
Tgt Ion	Resp	Lower	Upper
117	423203		
82	55.0	44.4	66.6
119	32.5	25.5	38.3



#72
 1,4-Dichlorobenzene-d4
 Concen: 50.00 ug/l
 RT: 12.06 min Scan# 1800
 Delta R.T. 0.00 min
 Lab File: VX016257.D
 Acq: 15 May 2020 02:13

Tgt Ion	Resp	Lower	Upper
152	213307		
115	60.0	41.3	124.1
150	157.1	0.0	352.2

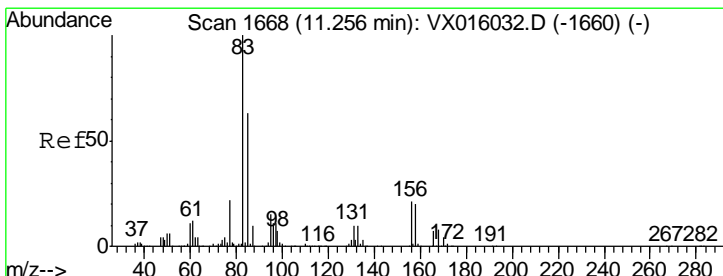
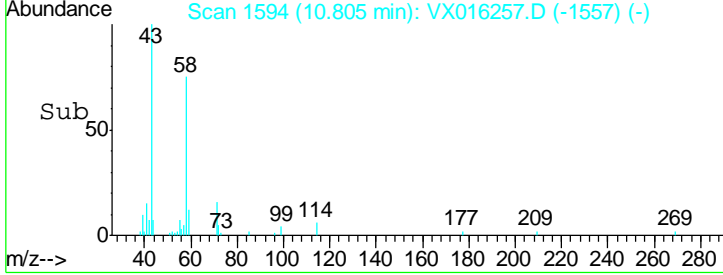
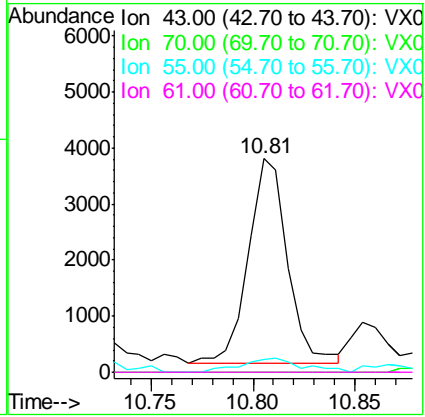
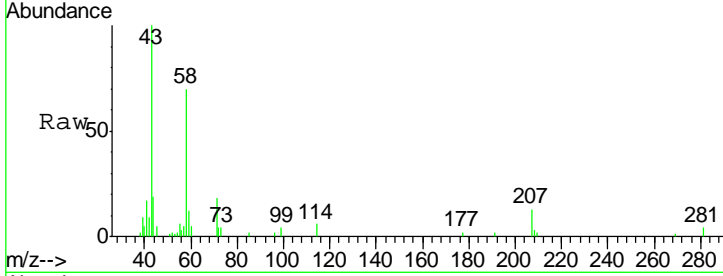




#74
 N-amyl acetate
 Concen: 0.68 ug/l
 RT: 10.81 min Scan# 1594
 Delta R.T. -0.07 min
 Lab File: VX016257.D
 Acq: 15 May 2020 02:13

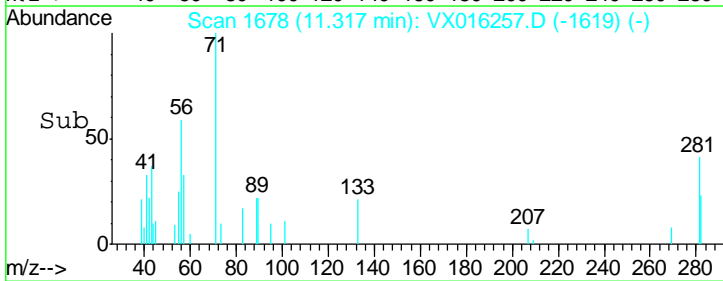
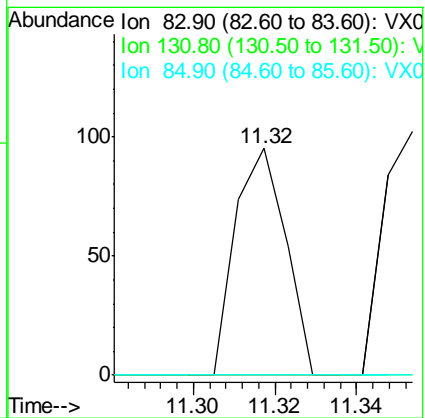
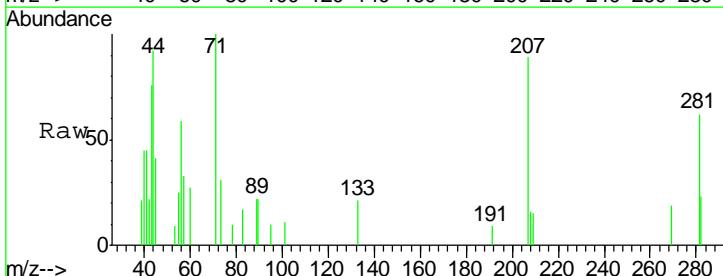
Instrument : MSVOA_X
 ClientSampleId : PB128866ZHE#05

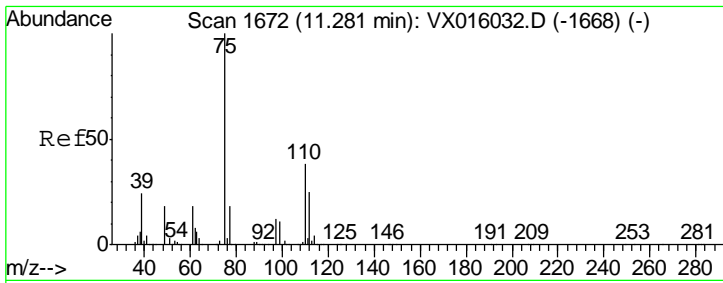
Tgt Ion	Resp	Lower	Upper
43	100		
70	0.0	36.5	54.7#
55	10.7	19.7	29.5#
61	0.0	20.9	31.3#



#75
 1,1,2,2-Tetrachloroethane
 Concen: 2.08 ug/l
 RT: 11.32 min Scan# 1678
 Delta R.T. 0.06 min
 Lab File: VX016257.D
 Acq: 15 May 2020 02:13

Tgt Ion	Resp	Lower	Upper
83	100		
131	0.0	5.1	15.4#
85	0.0	32.0	96.0#

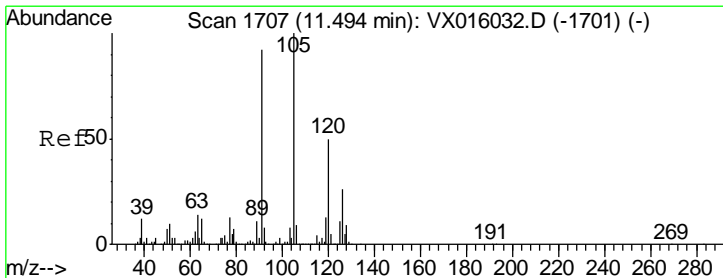
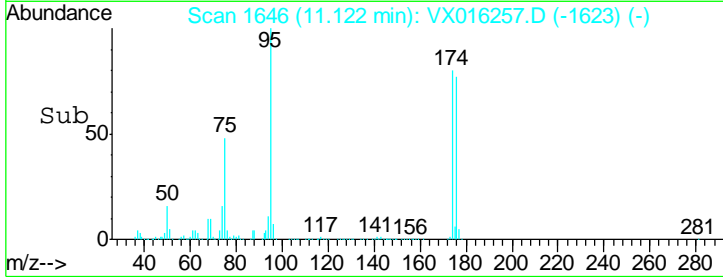
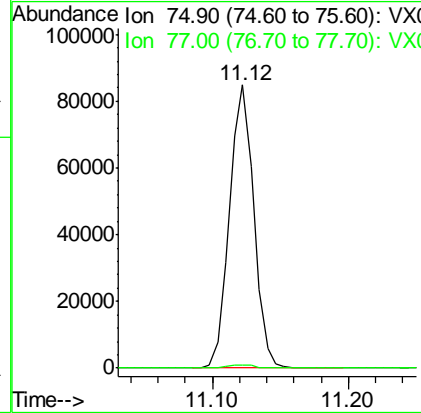
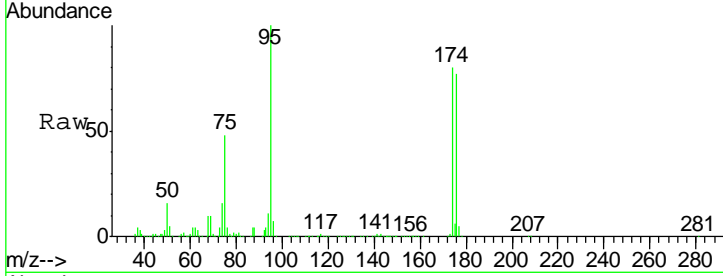




#76
 1,2,3-Trichloropropane
 Concen: 21.76 ug/l
 RT: 11.12 min Scan# 1646
 Delta R.T. -0.16 min
 Lab File: VX016257.D
 Acq: 15 May 2020 02:13

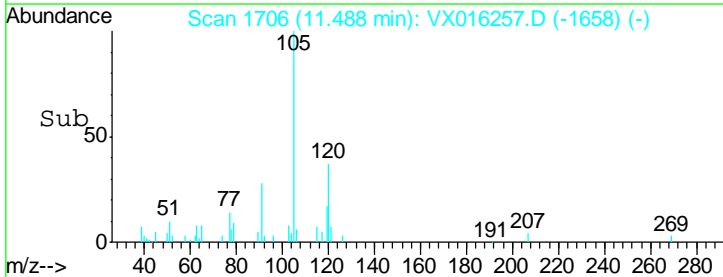
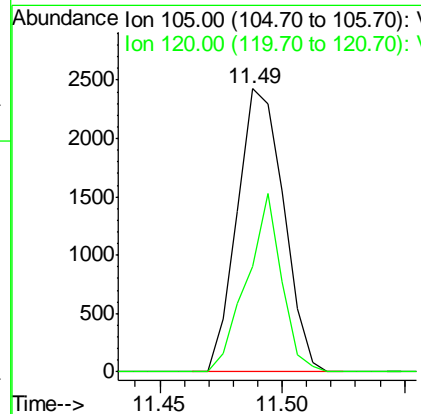
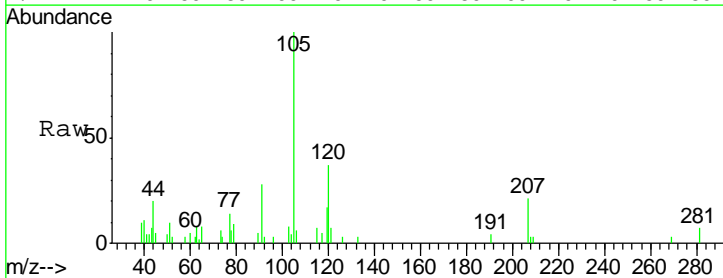
Instrument : MSVOA_X
 ClientSampleID : PB128866ZHE#05

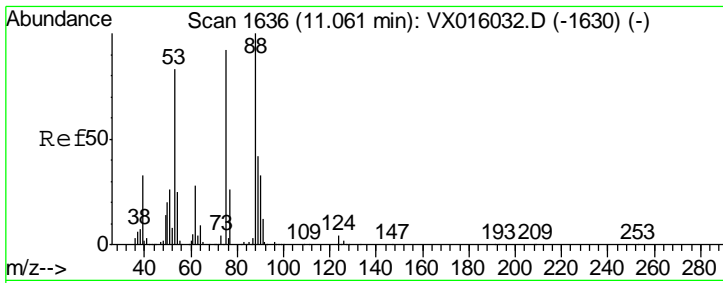
Tgt Ion: 75 Resp: 105313
 Ion Ratio Lower Upper
 75 100
 77 1.3 21.2 63.6#



#80
 1,3,5-Trimethylbenzene
 Concen: 0.24 ug/l
 RT: 11.49 min Scan# 1706
 Delta R.T. -0.01 min
 Lab File: VX016257.D
 Acq: 15 May 2020 02:13

Tgt Ion: 105 Resp: 3194
 Ion Ratio Lower Upper
 105 100
 120 47.5 24.6 74.0

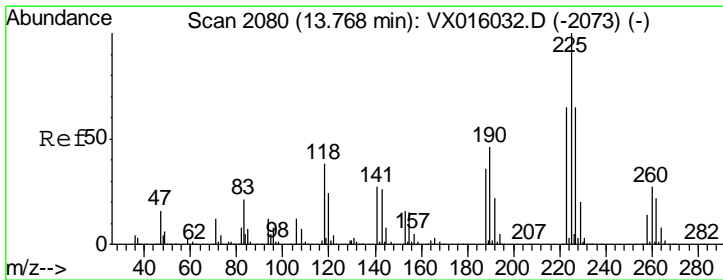
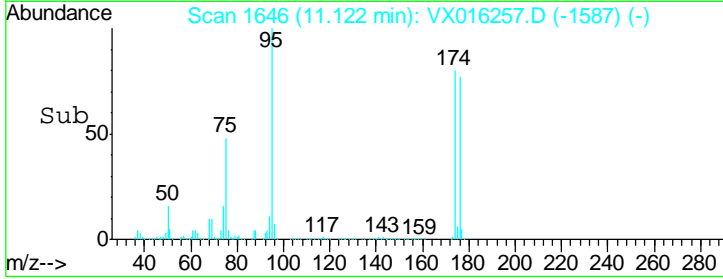
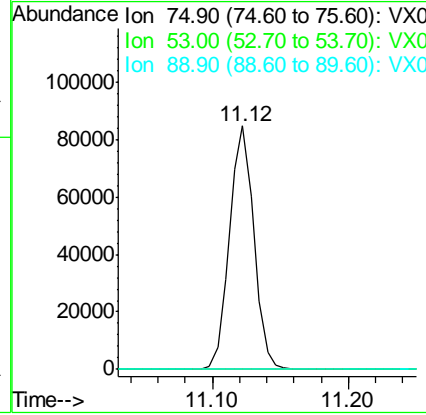
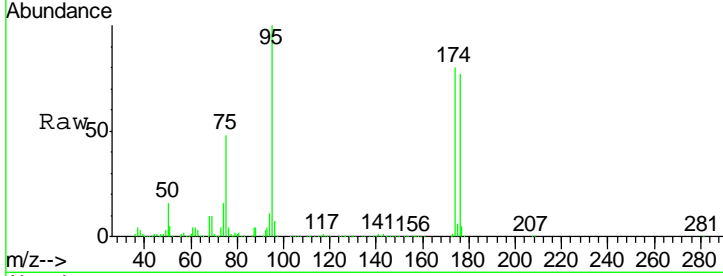




#81
 trans-1,4-Dichloro-2-butene
 Concen: 51.85 ug/l
 RT: 11.12 min Scan# 1646
 Delta R.T. 0.06 min
 Lab File: VX016257.D
 Acq: 15 May 2020 02:13

Instrument : MSVOA_X
 ClientSampled : PB128866ZHE#05

Tgt Ion	Resp	Lower	Upper
75	100		
53	0.0	73.1	109.7#
89	0.0	36.7	55.1#



#94
 Hexachlorobutadiene
 Concen: 0.62 ug/l
 RT: 13.77 min Scan# 2081
 Delta R.T. 0.01 min
 Lab File: VX016257.D
 Acq: 15 May 2020 02:13

Tgt Ion	Resp	Lower	Upper
225	100		
223	56.6	32.3	96.9
227	56.1	31.8	95.4

