

Data Path : Z:\VOASRV\HPCHEM1\MSVOA X\DATA\VX051520\
 Data File : VX016285.D
 Acq On : 15 May 2020 16:56
 Operator : JC/SP
 Sample : L2649-06
 Misc : 5.0mL/MSVOA X/WATER
 ALS Vial : 18 Sample Multiplier: 1

Instrument :
 MSVOA_X
 ClientSampleId :
 S32-0686

Quant Time: May 16 08:00:20 2020
 Quant Method : Z:\VOASRV\HPCHEM1\MSVOA_X\METHOD\82X050420W.M
 Quant Title : SW846 8260
 QLast Update : Wed May 06 06:43:32 2020
 Response via : Initial Calibration

Internal Standards	R.T.	QIon	Response	Conc	Units	Dev(Min)
1) Pentafluorobenzene	5.64	168	235191	50.00	ug/l	0.00
34) 1,4-Difluorobenzene	6.84	114	391282	50.00	ug/l	0.00
63) Chlorobenzene-d5	10.10	117	382872	50.00	ug/l	0.00
72) 1,4-Dichlorobenzene-d4	12.07	152	197489	50.00	ug/l	0.00

System Monitoring Compounds

33) 1,2-Dichloroethane-d4	6.04	65	144871	46.81	ug/l	0.00
Spiked Amount				50.000		
				Recovery	=	93.62%
35) Dibromofluoromethane	5.47	113	117923	47.57	ug/l	0.00
Spiked Amount				50.000		
				Recovery	=	95.14%
50) Toluene-d8	8.70	98	482727	50.54	ug/l	0.00
Spiked Amount				50.000		
				Recovery	=	101.08%
62) 4-Bromofluorobenzene	11.12	95	192994	53.12	ug/l	0.00
Spiked Amount				50.000		
				Recovery	=	106.24%

Target Compounds

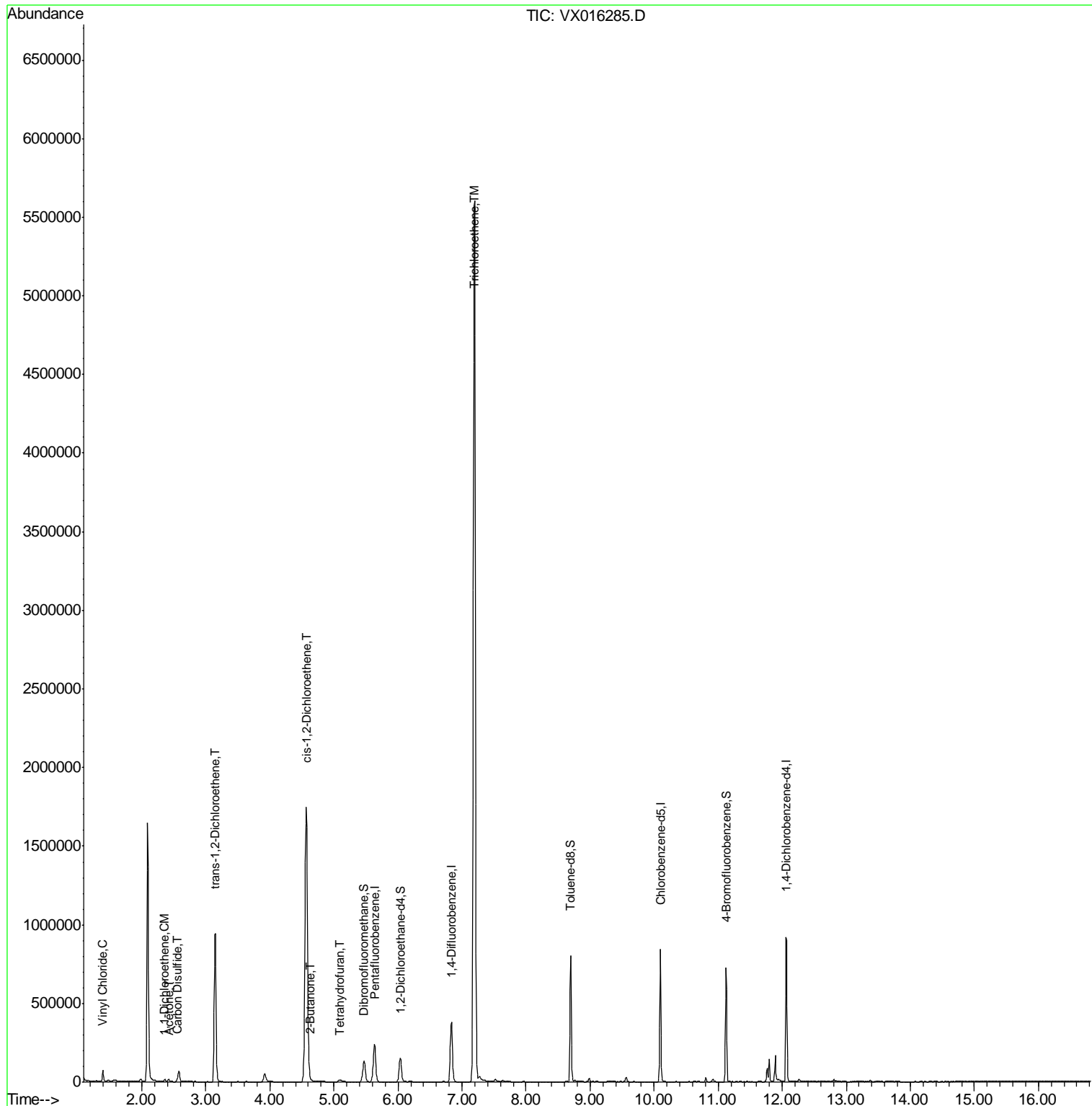
						Qvalue
4) Vinyl Chloride	1.39	62	37407	12.128	ug/l	98
12) 1,1-Dichloroethene	2.36	96	4490	1.837	ug/l	96
16) Acetone	2.42	43	14066	10.186	ug/l	91
17) Carbon Disulfide	2.55	76	16994	2.116	ug/l	97
21) trans-1,2-Dichloroethene	3.15	96	404732	148.555	ug/l	97
25) 2-Butanone	4.64	43	11518	5.176	ug/l	94
27) cis-1,2-Dichloroethene	4.57	96	1132419	380.198	ug/l	87
29) Tetrahydrofuran	5.10	42	2893	1.962	ug/l #	89
44) Trichloroethene	7.19	130	2250793	562.179	ug/l	99

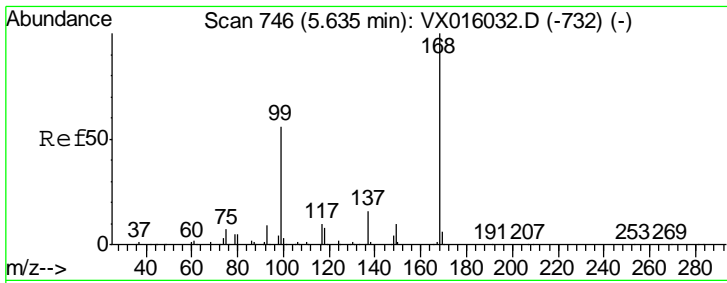
(#) = qualifier out of range (m) = manual integration (+) = signals summed

Data Path : Z:\VOASRV\HPCHEM1\MSVOA X\DATA\VX051520\
 Data File : VX016285.D
 Acq On : 15 May 2020 16:56
 Operator : JC/SP
 Sample : L2649-06
 Misc : 5.0mL/MSVOA X/WATER
 ALS Vial : 18 Sample Multiplier: 1

Instrument :
 MSVOA_X
 ClientSampled :
 S32-0686

Quant Time: May 16 08:00:20 2020
 Quant Method : Z:\VOASRV\HPCHEM1\MSVOA_X\METHOD\82X050420W.M
 Quant Title : SW846 8260
 QLast Update : Wed May 06 06:43:32 2020
 Response via : Initial Calibration

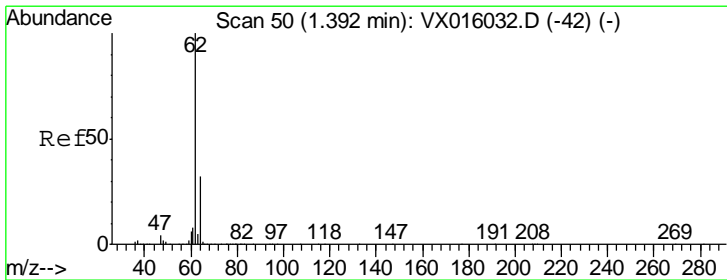
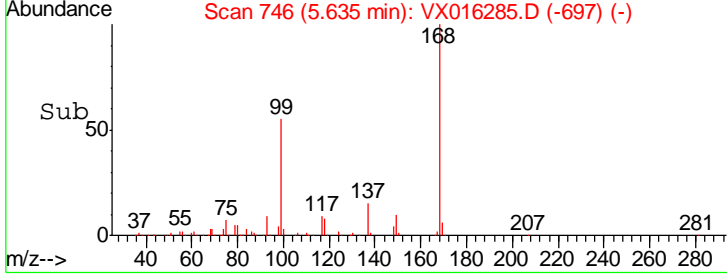
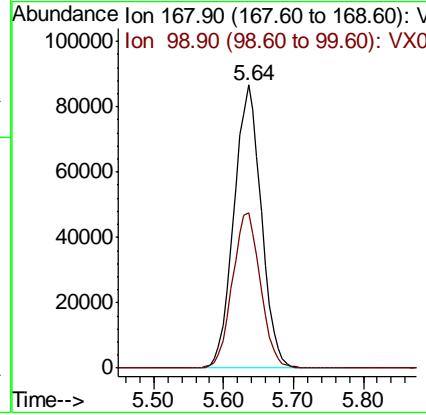
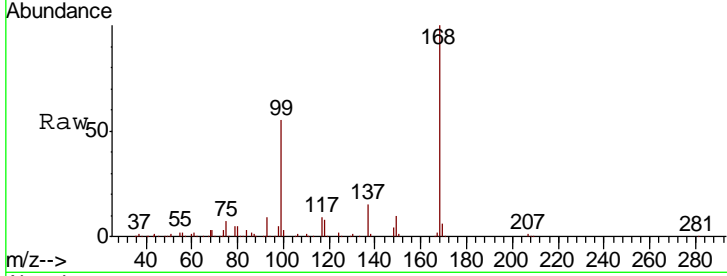




#1
 Pentafluorobenzene
 Concen: 50.000 ug/l
 RT: 5.64 min Scan# 746
 Delta R.T. -0.00 min
 Lab File: VX016285.D
 Acq: 15 May 2020 16:56

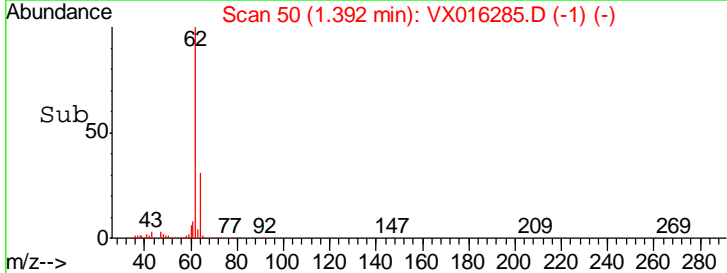
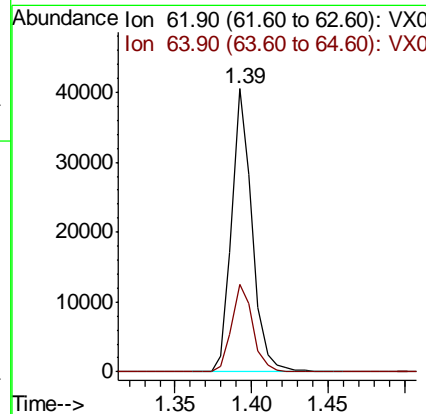
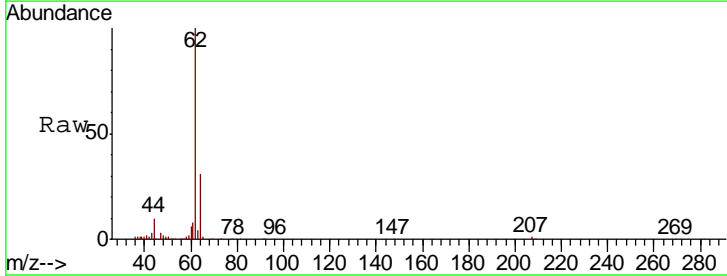
Instrument :
 MSVOA_X
 ClientSampled :
 S32-0686

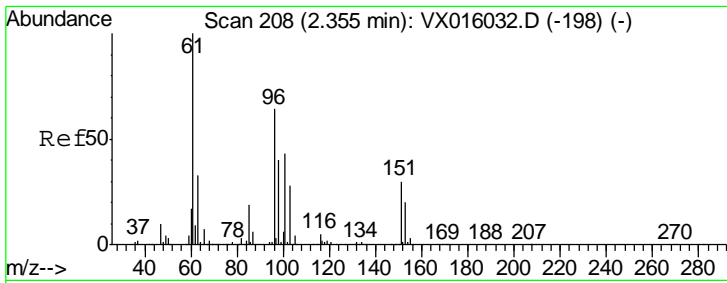
Tgt Ion	Resp	Lower	Upper
168	235191		
99	54.8	45.0	67.4



#4
 Vinyl Chloride
 Concen: 12.128 ug/l
 RT: 1.39 min Scan# 50
 Delta R.T. -0.00 min
 Lab File: VX016285.D
 Acq: 15 May 2020 16:56

Tgt Ion	Resp	Lower	Upper
62	37407		
64	31.1	25.7	38.5

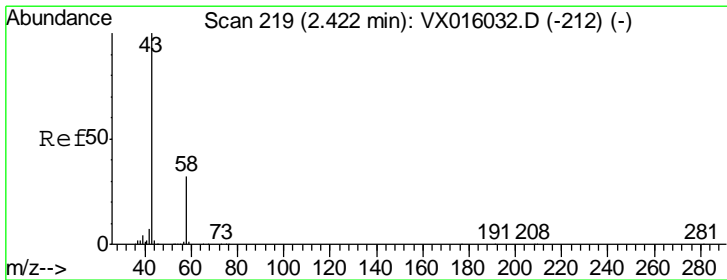
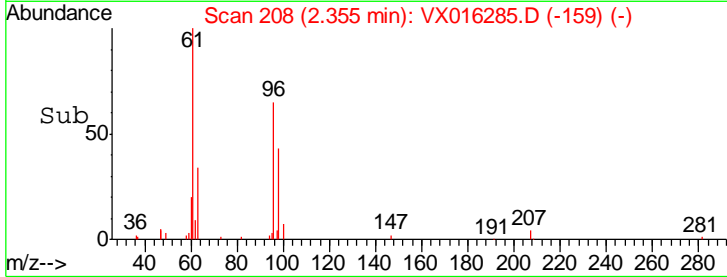
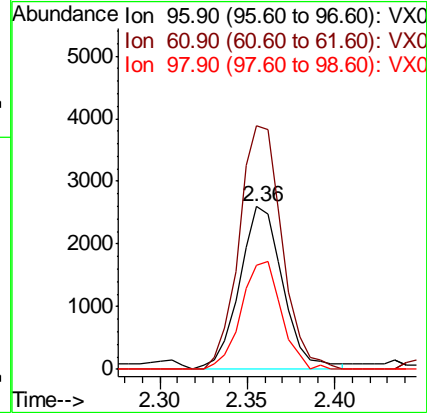
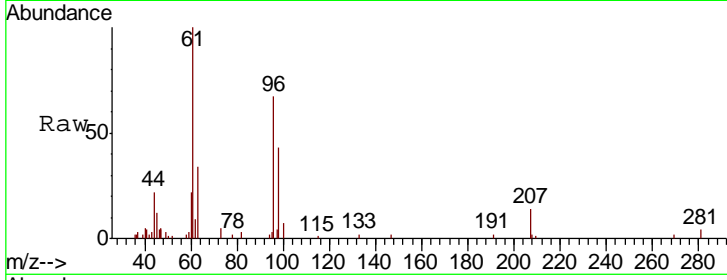




#12
 1,1-Dichloroethene
 Concen: 1.837 ug/l
 RT: 2.36 min Scan# 208
 Delta R.T. -0.00 min
 Lab File: VX016285.D
 Acq: 15 May 2020 16:56

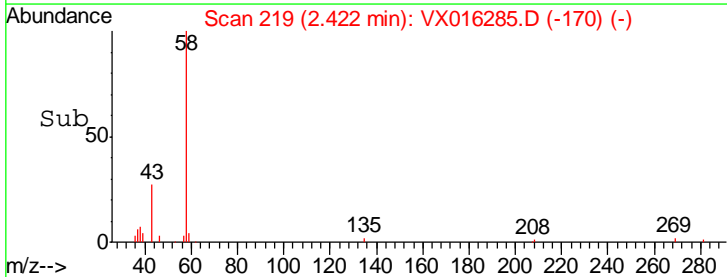
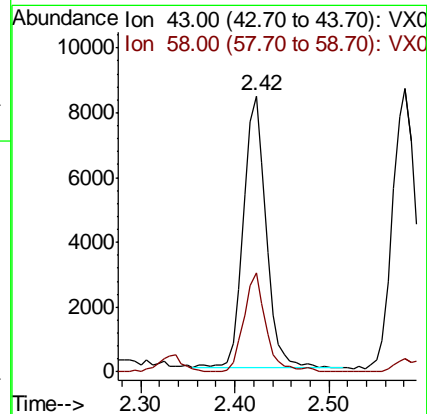
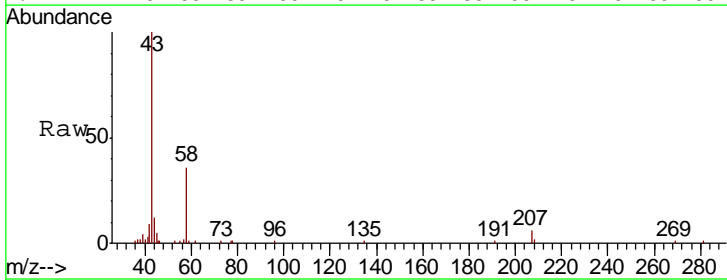
Instrument :
 MSVOA_X
 ClientSampled :
 S32-0686

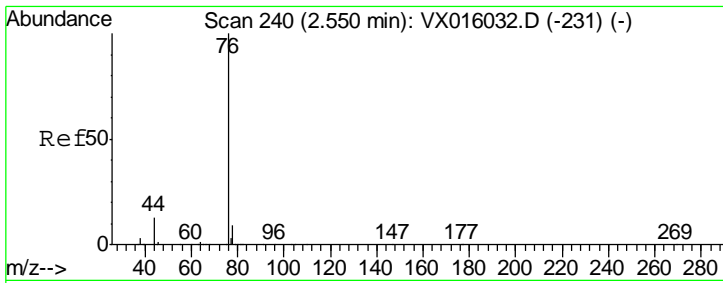
Tgt Ion	Resp	Lower	Upper
96	4490		
Ion Ratio			
96	100		
61	150.0	124.8	187.2
98	64.4	49.7	74.5



#16
 Acetone
 Concen: 10.186 ug/l
 RT: 2.42 min Scan# 219
 Delta R.T. -0.00 min
 Lab File: VX016285.D
 Acq: 15 May 2020 16:56

Tgt Ion	Resp	Lower	Upper
43	14066		
Ion Ratio			
43	100		
58	36.6	25.4	38.0

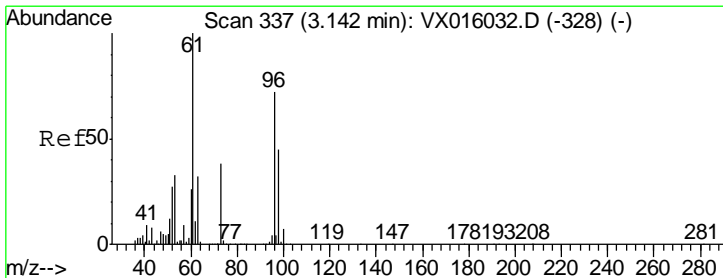
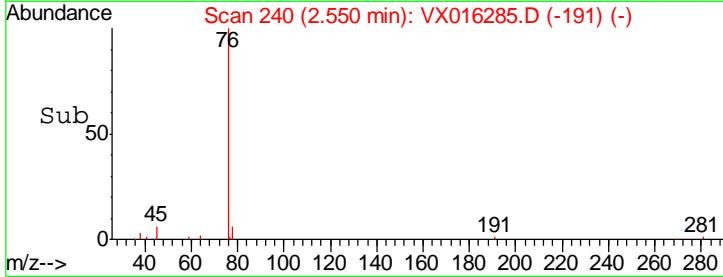
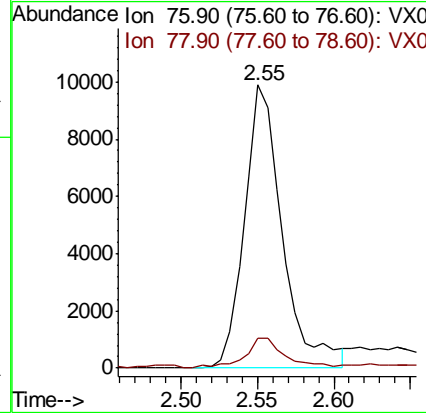
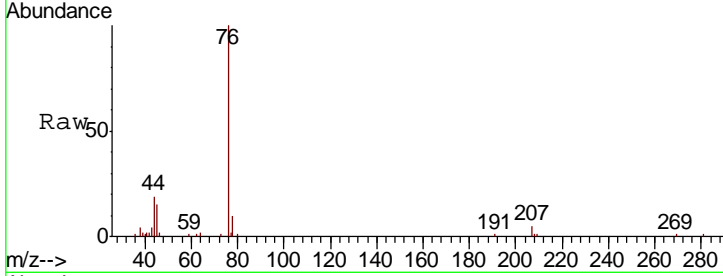




#17
 Carbon Disulfide
 Concen: 2.116 ug/l
 RT: 2.55 min Scan# 240
 Delta R.T. 0.00 min
 Lab File: VX016285.D
 Acq: 15 May 2020 16:56

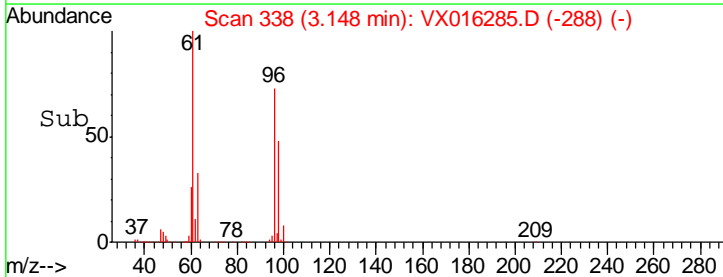
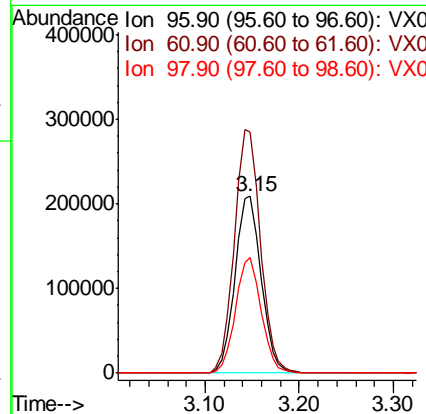
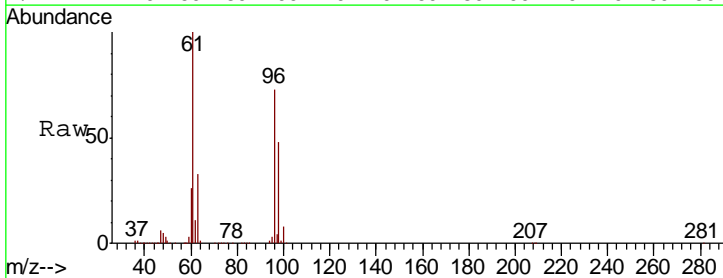
Instrument :
 MSVOA_X
 ClientSampled :
 S32-0686

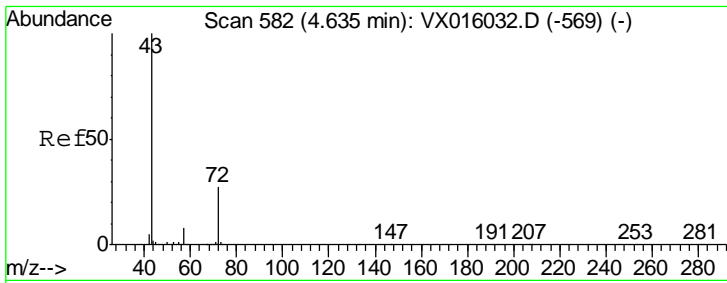
Tgt Ion	Resp	Lower	Upper
76	16994		
78	10.5	7.5	11.3



#21
 trans-1,2-Dichloroethene
 Concen: 148.555 ug/l
 RT: 3.15 min Scan# 338
 Delta R.T. 0.01 min
 Lab File: VX016285.D
 Acq: 15 May 2020 16:56

Tgt Ion	Resp	Lower	Upper
96	404732		
61	136.1	111.2	166.8
98	65.5	50.2	75.4

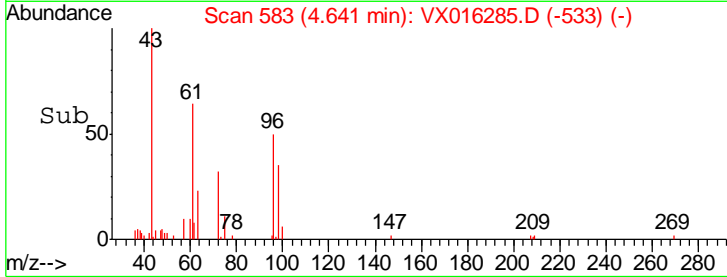
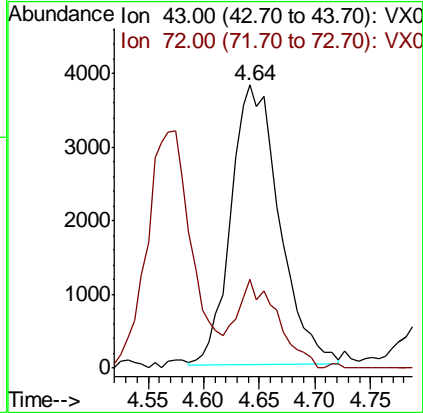
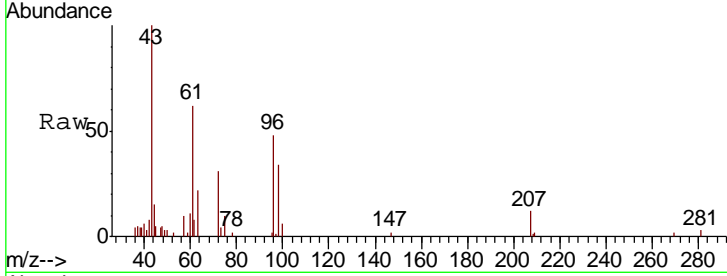




#25
 2-Butanone
 Concen: 5.176 ug/l
 RT: 4.64 min Scan# 583
 Delta R.T. 0.01 min
 Lab File: VX016285.D
 Acq: 15 May 2020 16:56

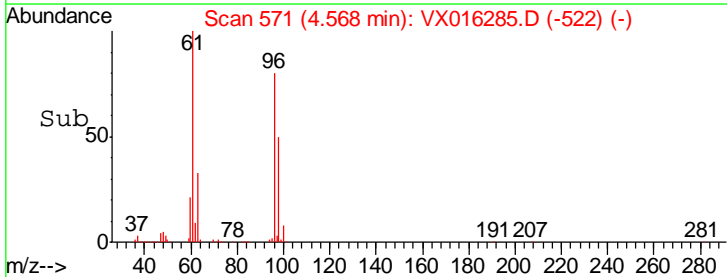
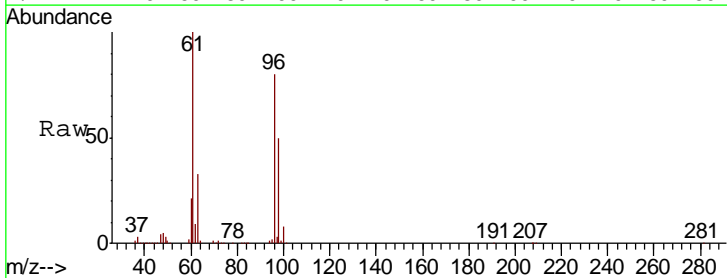
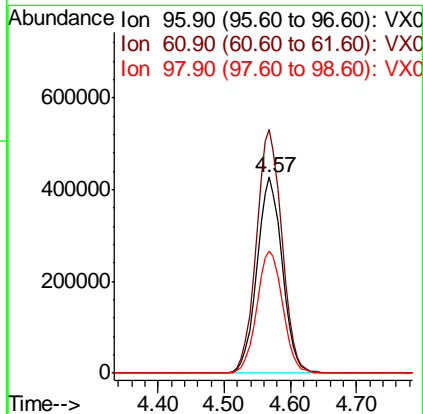
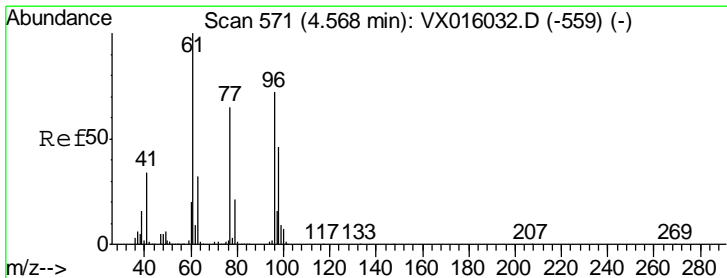
Instrument :
 MSVOA_X
ClientSampled :
 S32-0686

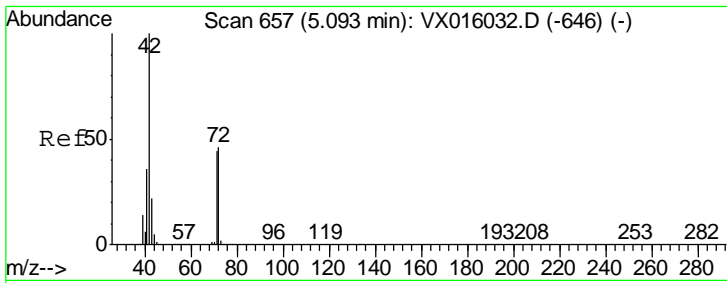
Tgt Ion	Resp	Lower	Upper
43	11518		
72	30.3	21.8	32.8



#27
 cis-1,2-Dichloroethene
 Concen: 380.198 ug/l
 RT: 4.57 min Scan# 571
 Delta R.T. -0.00 min
 Lab File: VX016285.D
 Acq: 15 May 2020 16:56

Tgt Ion	Resp	Lower	Upper
96	1132419		
61	125.9	0.0	296.2
98	64.0	0.0	129.4

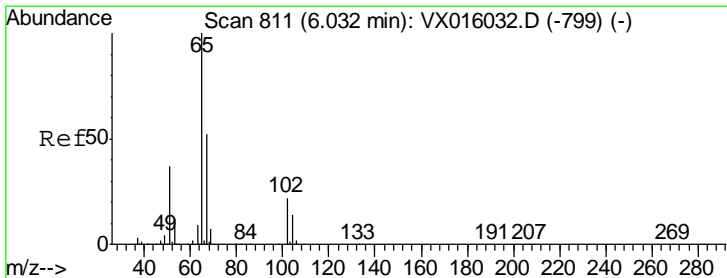
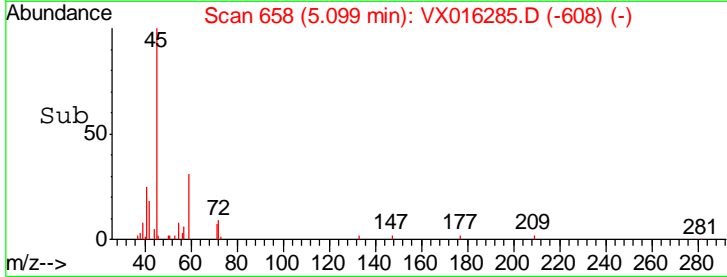
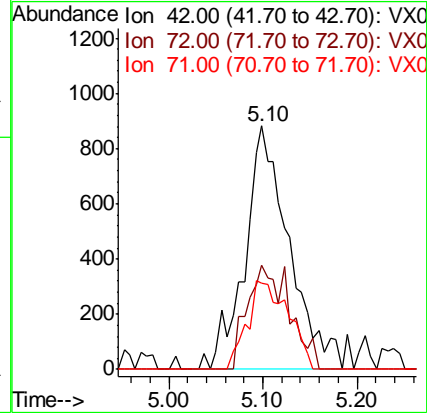
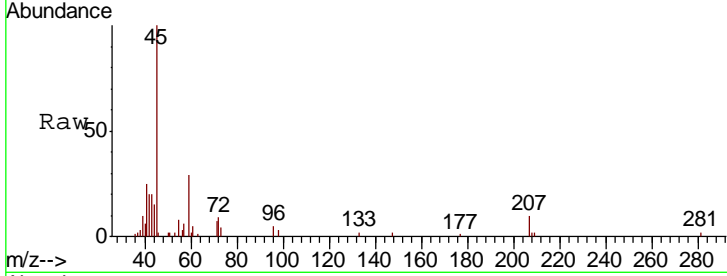




#29
 Tetrahydrofuran
 Concen: 1.962 ug/l
 RT: 5.10 min Scan# 658
 Delta R.T. 0.01 min
 Lab File: VX016285.D
 Acq: 15 May 2020 16:56

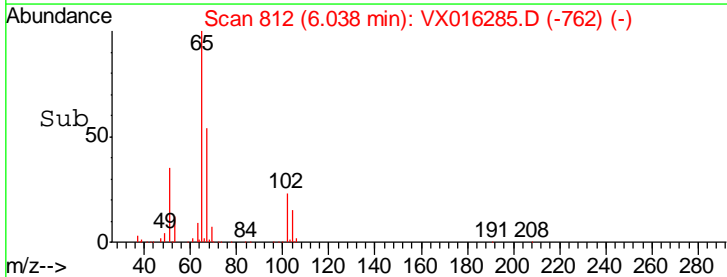
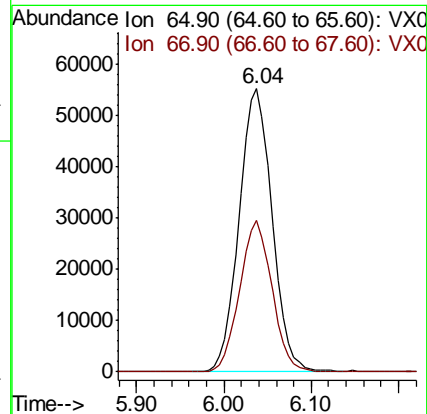
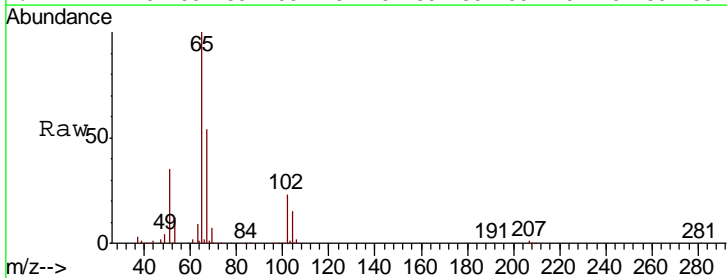
Instrument :
 MSVOA_X
 ClientSampleId :
 S32-0686

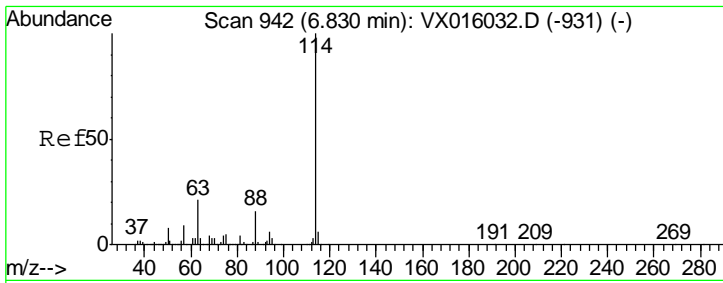
Tgt Ion	Resp	Lower	Upper
42	100		
72	41.0	37.1	55.7
71	33.9	34.5	51.7#



#33
 1,2-Dichloroethane-d4
 Concen: 46.810 ug/l
 RT: 6.04 min Scan# 812
 Delta R.T. 0.01 min
 Lab File: VX016285.D
 Acq: 15 May 2020 16:56

Tgt Ion	Resp	Lower	Upper
65	100		
67	52.4	0.0	104.8

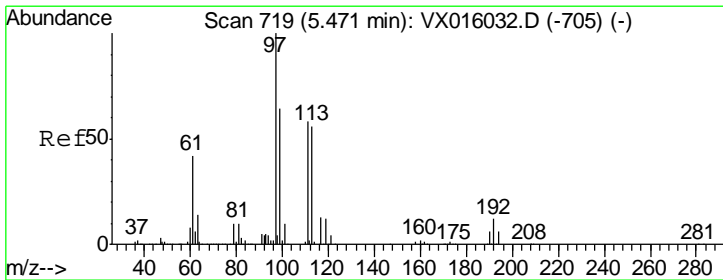
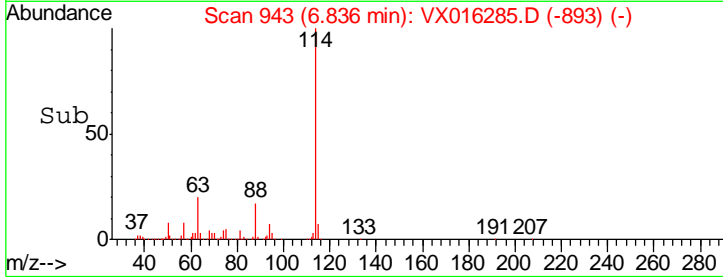
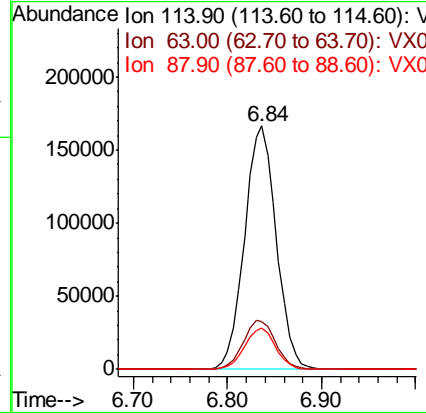
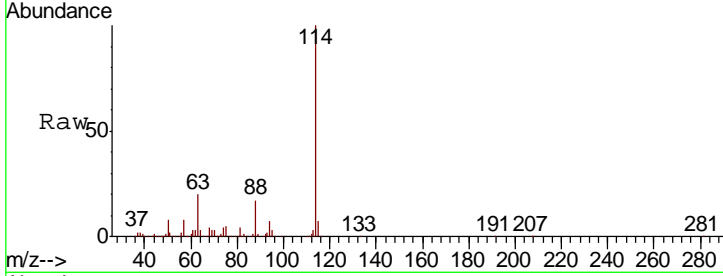




#34
 1,4-Difluorobenzene
 Concen: 50.000 ug/l
 RT: 6.84 min Scan# 943
 Delta R.T. 0.01 min
 Lab File: VX016285.D
 Acq: 15 May 2020 16:56

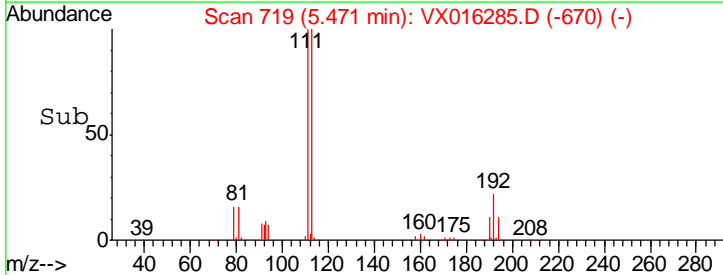
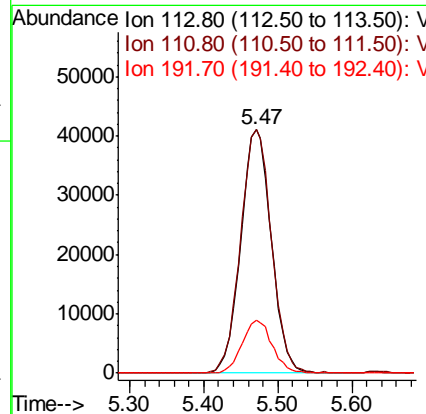
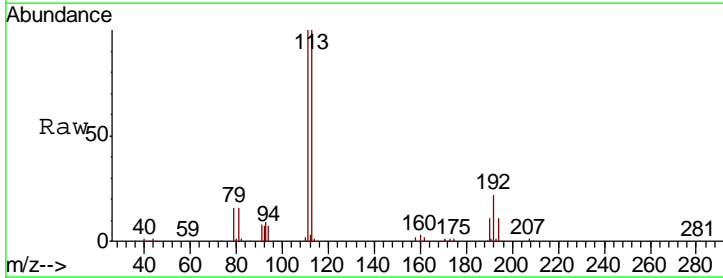
Instrument :
 MSVOA_X
 ClientSampled :
 S32-0686

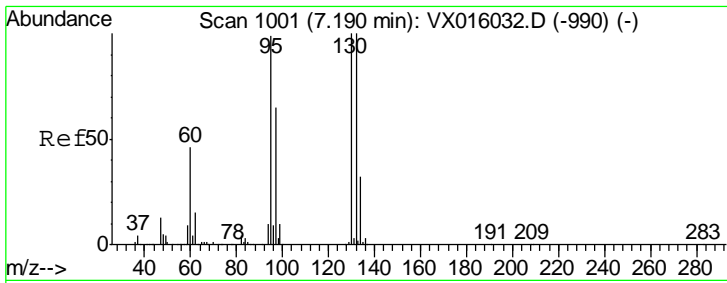
Tgt Ion	Resp	Lower	Upper
114	391282		
63	19.7	0.0	42.8
88	16.9	0.0	31.4



#35
 Dibromofluoromethane
 Concen: 47.570 ug/l
 RT: 5.47 min Scan# 719
 Delta R.T. -0.00 min
 Lab File: VX016285.D
 Acq: 15 May 2020 16:56

Tgt Ion	Resp	Lower	Upper
113	117923		
111	101.6	81.6	122.4
192	21.4	17.0	25.4

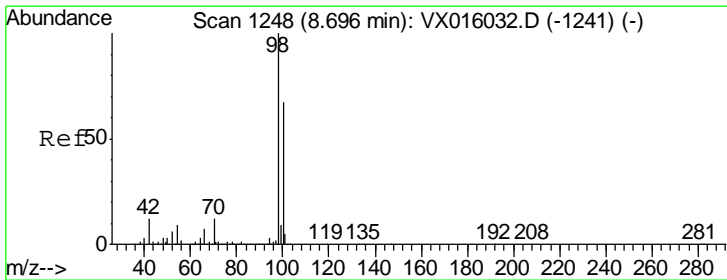
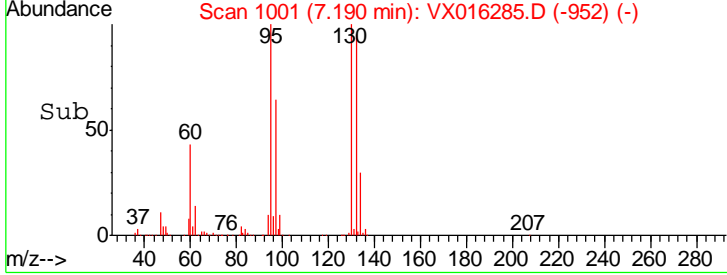
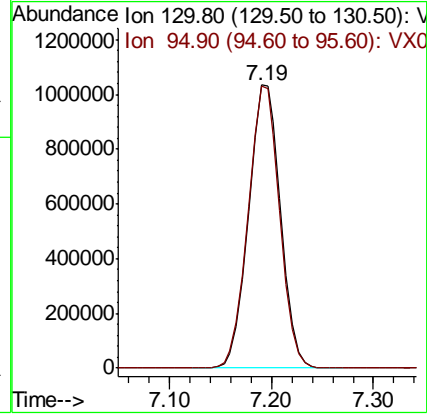
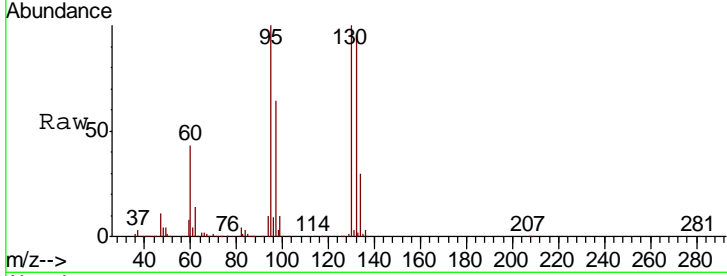




#44
 Trichloroethene
 Concen: 562.179 ug/l
 RT: 7.19 min Scan# 1001
 Delta R.T. -0.00 min
 Lab File: VX016285.D
 Acq: 15 May 2020 16:56

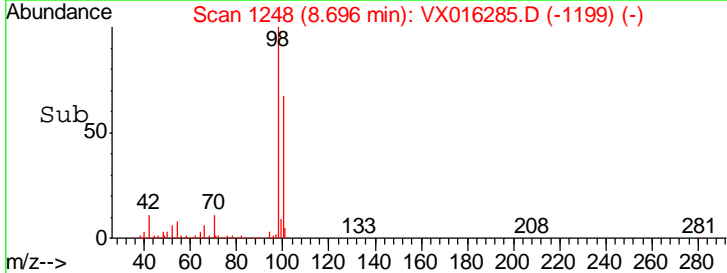
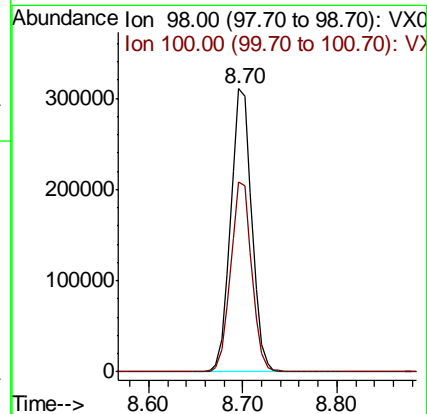
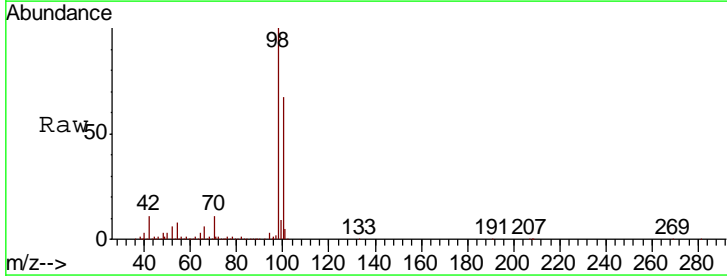
Instrument :
 MSVOA_X
 ClientSampled :
 S32-0686

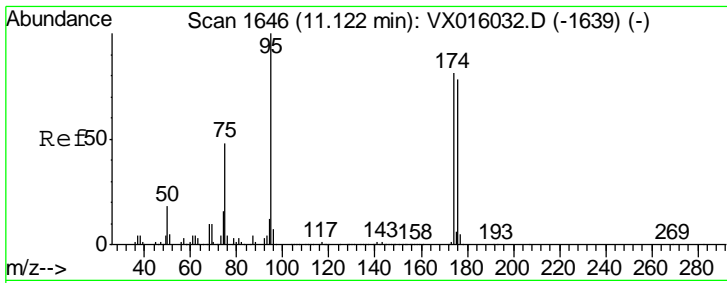
Tgt Ion: 130 Resp: 2250793
 Ion Ratio Lower Upper
 130 100
 95 99.8 0.0 197.4



#50
 Toluene-d8
 Concen: 50.539 ug/l
 RT: 8.70 min Scan# 1248
 Delta R.T. -0.00 min
 Lab File: VX016285.D
 Acq: 15 May 2020 16:56

Tgt Ion: 98 Resp: 482727
 Ion Ratio Lower Upper
 98 100
 100 67.0 53.7 80.5

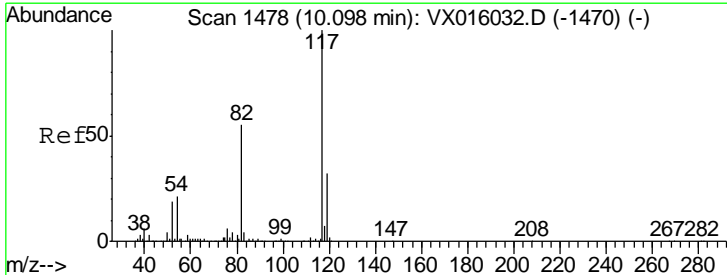
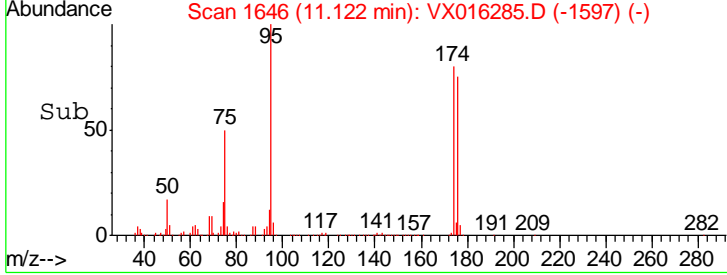
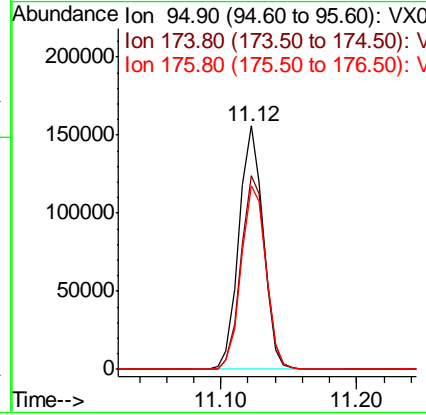
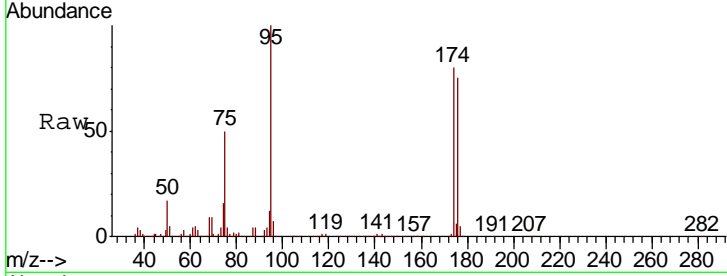




#62
 4-Bromofluorobenzene
 Concen: 53.123 ug/l
 RT: 11.12 min Scan# 1646
 Delta R.T. -0.00 min
 Lab File: VX016285.D
 Acq: 15 May 2020 16:56

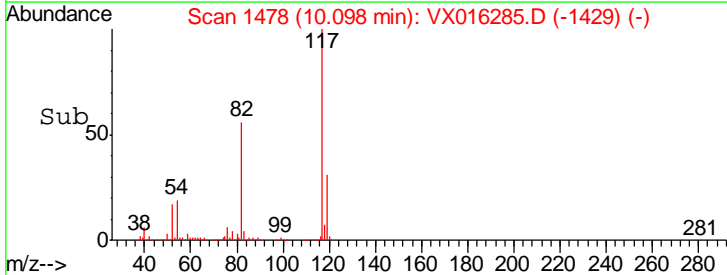
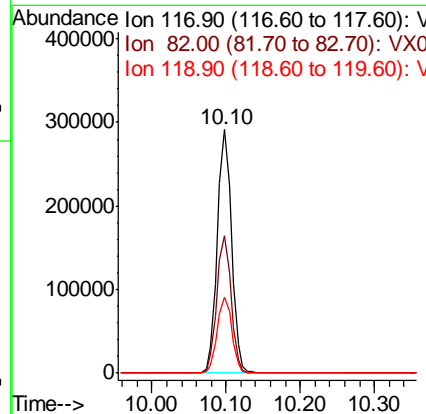
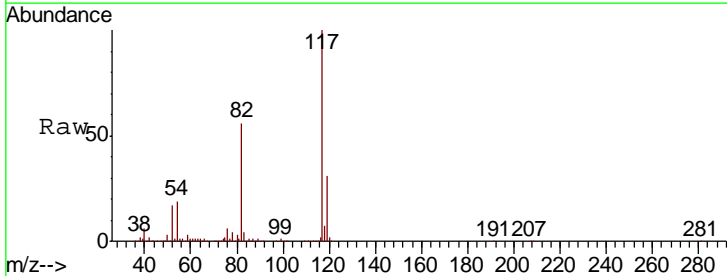
Instrument : MSVOA_X
 ClientSampled : S32-0686

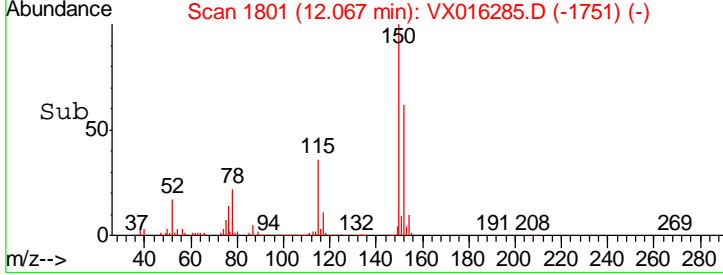
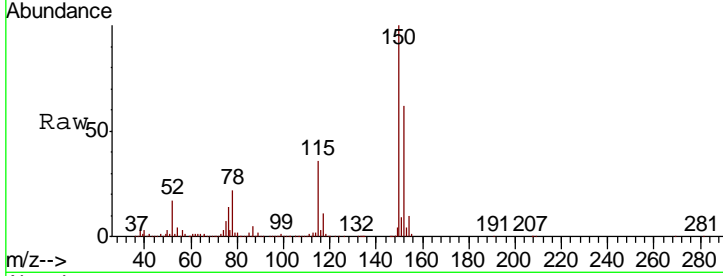
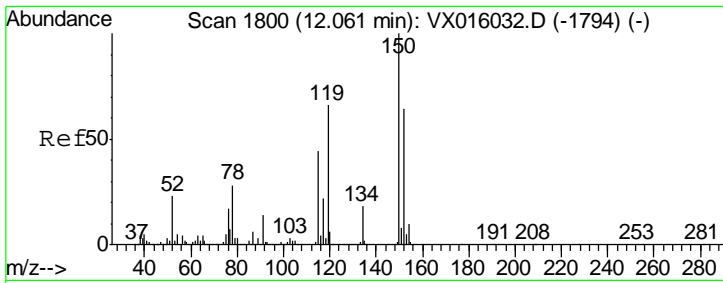
Tgt Ion	Resp	Lower	Upper
95	192994		
174	81.4	0.0	159.4
176	77.1	0.0	157.6



#63
 Chlorobenzene-d5
 Concen: 50.000 ug/l
 RT: 10.10 min Scan# 1478
 Delta R.T. -0.00 min
 Lab File: VX016285.D
 Acq: 15 May 2020 16:56

Tgt Ion	Resp	Lower	Upper
117	382872		
82	56.2	44.4	66.6
119	31.4	25.5	38.3





#72
 1,4-Dichlorobenzene-d4
 Concen: 50.000 ug/l
 RT: 12.07 min Scan# 1801
 Delta R.T. 0.01 min
 Lab File: VX016285.D
 Acq: 15 May 2020 16:56

Instrument : MSVOA_X
 ClientSampled : S32-0686

Tot Ion	Resp	Lower	Upper
152	100		
115	59.6	41.3	124.1
150	158.7	0.0	352.2

