

Data Path : Z:\voasrv\HPCHEM1\MSVOA_X\Data\VX051525\
 Data File : VX046209.D
 Acq On : 15 May 2025 13:24
 Operator : JC/MD
 Sample : Q2050-01
 Misc : 5.0mL/MSVOA_X/WATER
 ALS Vial : 11 Sample Multiplier: 1

Instrument :
 MSVOA_X
 ClientSampleId :

Quant Time: May 16 01:05:15 2025
 Quant Method : Z:\voasrv\HPCHEM1\MSVOA_X\Method\82X050525W.M
 Quant Title : SW846 8260
 QLast Update : Tue May 06 07:12:22 2025
 Response via : Initial Calibration

Compound	R.T.	QIon	Response	Conc	Units	Dev(Min)

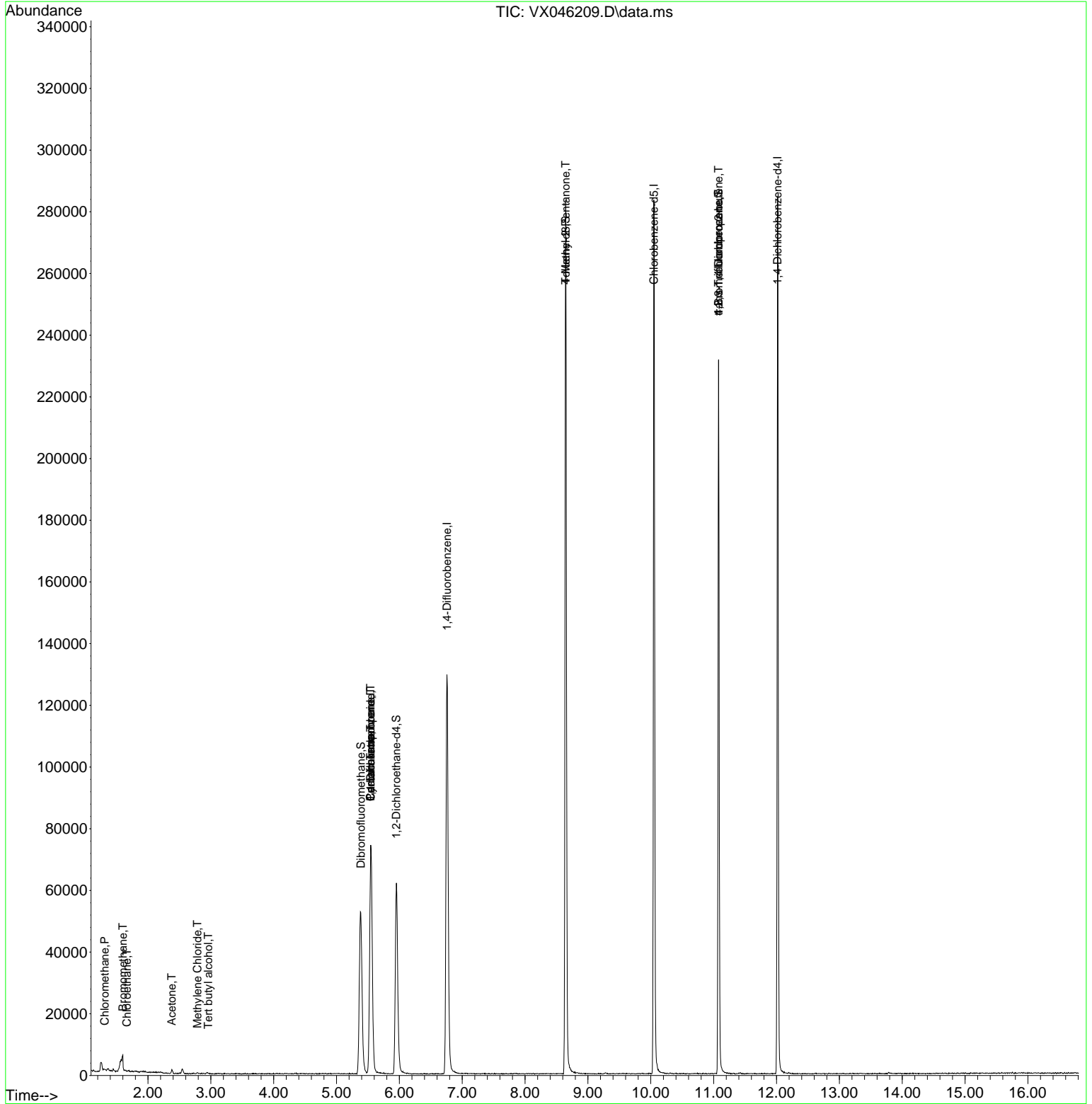
Internal Standards						
1) Pentafluorobenzene	5.544	168	62722	50.000	ug/l	0.00
34) 1,4-Difluorobenzene	6.757	114	124979	50.000	ug/l	0.00
63) Chlorobenzene-d5	10.049	117	119897	50.000	ug/l	0.00
72) 1,4-Dichlorobenzene-d4	12.018	152	51079	50.000	ug/l	0.00
System Monitoring Compounds						
33) 1,2-Dichloroethane-d4	5.952	65	64435	55.104	ug/l	0.00
Spiked Amount	50.000	Range 74 - 125	Recovery	=	110.200%	
35) Dibromofluoromethane	5.385	113	47022	52.248	ug/l	0.00
Spiked Amount	50.000	Range 75 - 124	Recovery	=	104.500%	
50) Toluene-d8	8.647	98	158764	50.968	ug/l	0.00
Spiked Amount	50.000	Range 86 - 113	Recovery	=	101.940%	
62) 4-Bromofluorobenzene	11.079	95	60562	50.686	ug/l	0.00
Spiked Amount	50.000	Range 77 - 121	Recovery	=	101.380%	
Target Compounds						
						Qvalue
3) Chloromethane	1.313	50	504	0.541	ug/l #	79
5) Bromomethane	1.599	94	138	0.343	ug/l #	4
6) Chloroethane	1.666	64	99	0.214	ug/l #	44
11) Tert butyl alcohol	2.959	59	49	0.299	ug/l #	72
16) Acetone	2.380	43	1185	2.527	ug/l #	75
20) Methylene Chloride	2.788	84	209	0.233	ug/l #	47
31) Cyclohexane	5.544	56	1898	1.362	ug/l #	28
36) 1,1-Dichloropropene	5.544	75	6319	5.226	ug/l #	52
38) Carbon Tetrachloride	5.544	117	7469	5.497	ug/l #	16
51) 4-Methyl-2-Pentanone	8.647	43	866	0.572	ug/l #	1
76) 1,2,3-Trichloropropane	11.079	75	35301	28.712	ug/l #	36
81) trans-1,4-Dichloro-2-b...	11.079	75	35301	93.476	ug/l #	1

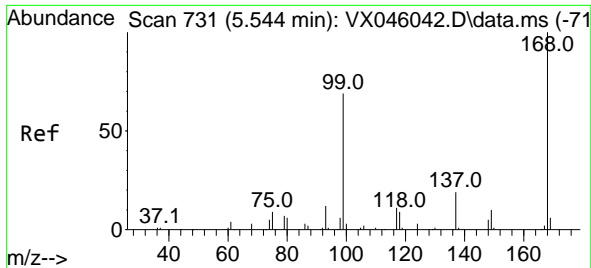
(#) = qualifier out of range (m) = manual integration (+) = signals summed

Data Path : Z:\voasrv\HPCHEM1\MSVOA_X\Data\VX051525\
 Data File : VX046209.D
 Acq On : 15 May 2025 13:24
 Operator : JC/MD
 Sample : Q2050-01
 Misc : 5.0mL/MSVOA_X/WATER
 ALS Vial : 11 Sample Multiplier: 1

Instrument :
 MSVOA_X
 ClientSampleId :

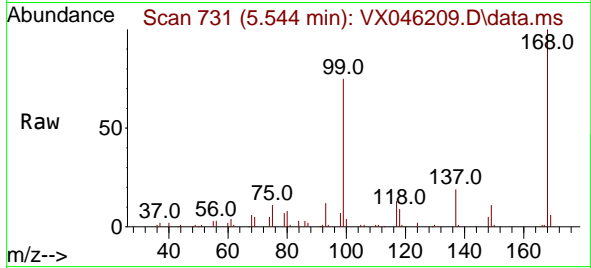
Quant Time: May 16 01:05:15 2025
 Quant Method : Z:\voasrv\HPCHEM1\MSVOA_X\Method\82X050525W.M
 Quant Title : SW846 8260
 QLast Update : Tue May 06 07:12:22 2025
 Response via : Initial Calibration



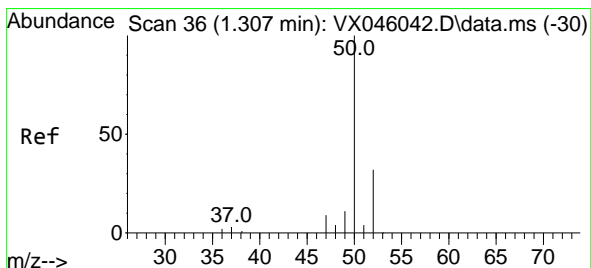
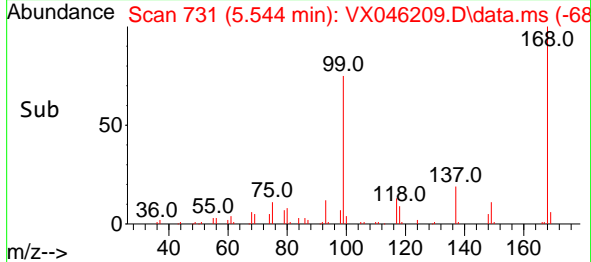
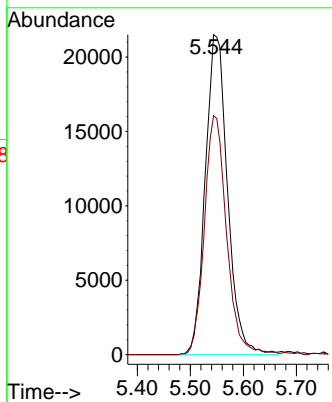


#1
 Pentafluorobenzene
 Concen: 50.000 ug/l
 RT: 5.544 min Scan# 71
 Delta R.T. -0.000 min
 Lab File: VX046209.D
 Acq: 15 May 2025 13:24

Instrument :
 MSVOA_X
 ClientSampleId :

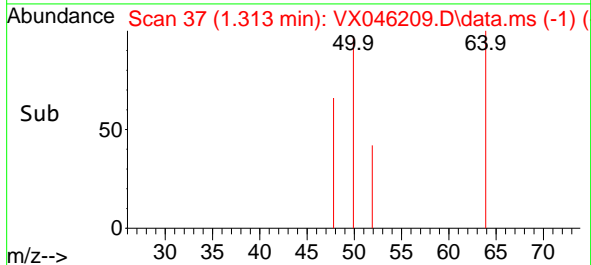
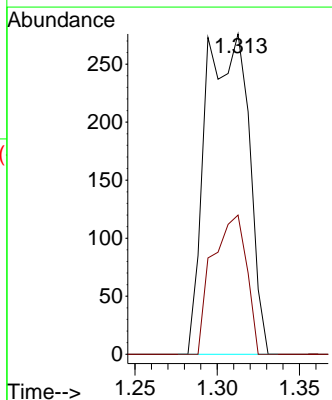
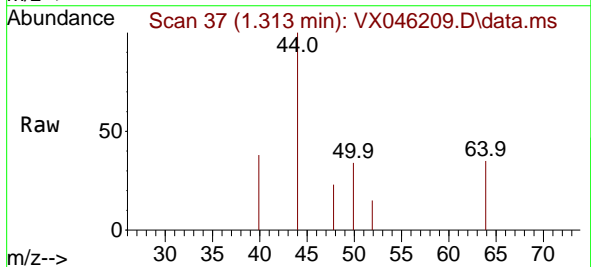


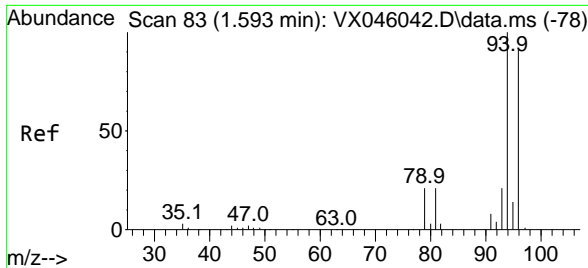
Tgt Ion:168 Resp: 62722
 Ion Ratio Lower Upper
 168 100
 99 74.7 54.9 82.3



#3
 Chloromethane
 Concen: 0.541 ug/l
 RT: 1.313 min Scan# 37
 Delta R.T. 0.006 min
 Lab File: VX046209.D
 Acq: 15 May 2025 13:24

Tgt Ion: 50 Resp: 504
 Ion Ratio Lower Upper
 50 100
 52 43.5 25.4 38.2#

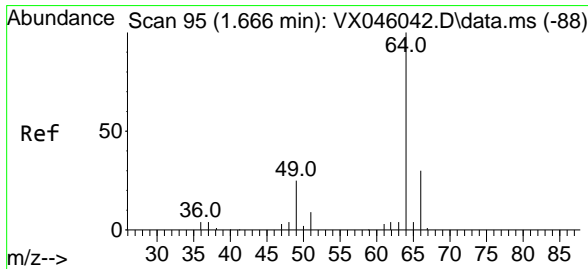
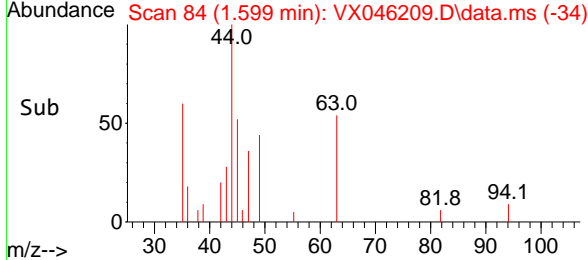
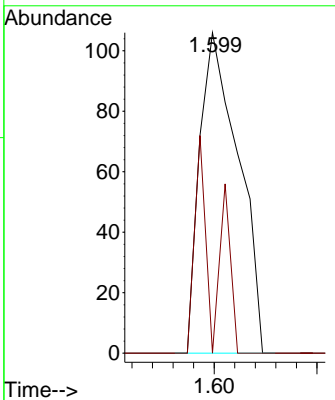
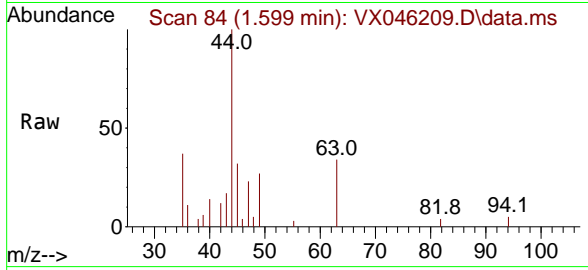




#5
 Bromomethane
 Concen: 0.343 ug/l
 RT: 1.599 min Scan# 84
 Delta R.T. 0.006 min
 Lab File: VX046209.D
 Acq: 15 May 2025 13:24

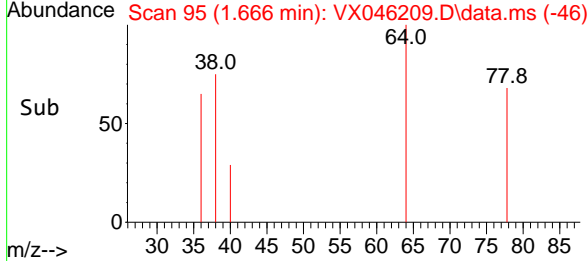
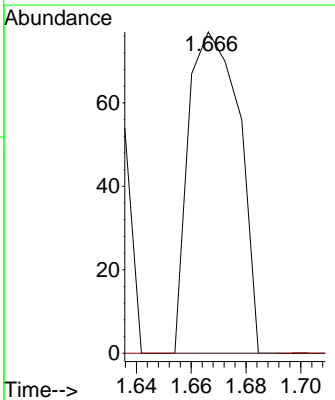
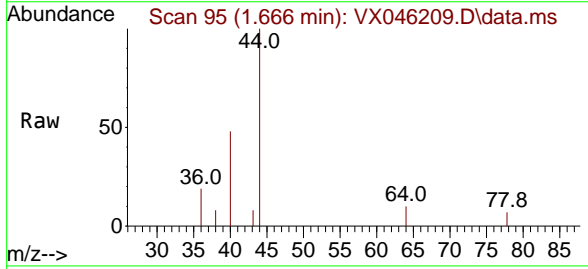
Instrument : MSVOA_X
 ClientSampleId :

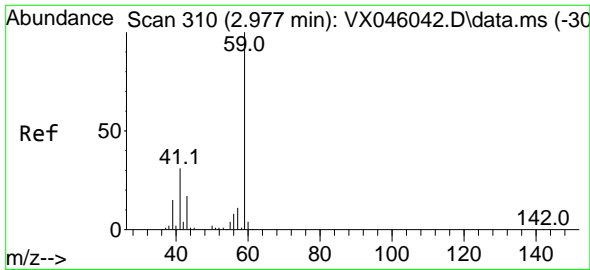
Tgt Ion: 94 Resp: 138
 Ion Ratio Lower Upper
 94 100
 96 0.0 72.8 109.2#



#6
 Chloroethane
 Concen: 0.214 ug/l
 RT: 1.666 min Scan# 95
 Delta R.T. -0.000 min
 Lab File: VX046209.D
 Acq: 15 May 2025 13:24

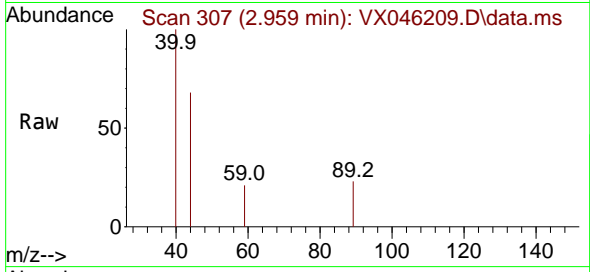
Tgt Ion: 64 Resp: 99
 Ion Ratio Lower Upper
 64 100
 66 0.0 24.3 36.5#



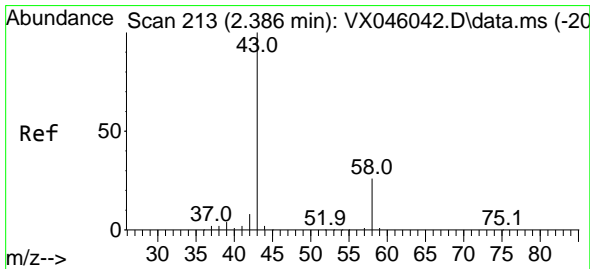
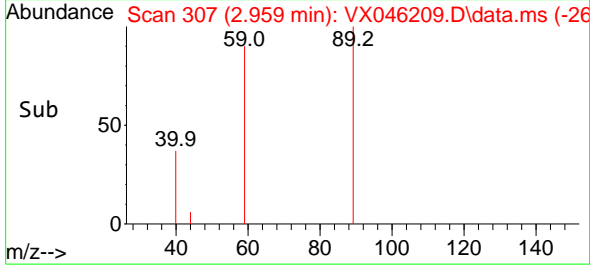
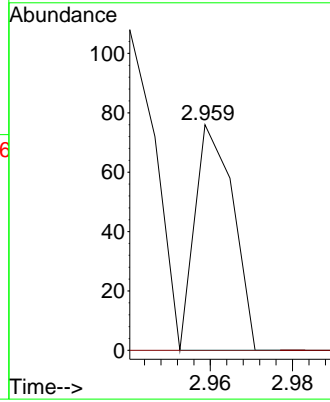


#11
 Tert butyl alcohol
 Concen: 0.299 ug/l
 RT: 2.959 min Scan# 30
 Delta R.T. -0.018 min
 Lab File: VX046209.D
 Acq: 15 May 2025 13:24

Instrument : MSVOA_X
 ClientSampleId :

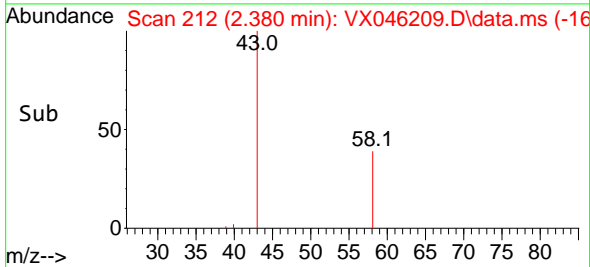
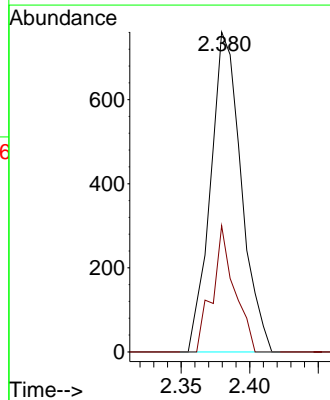
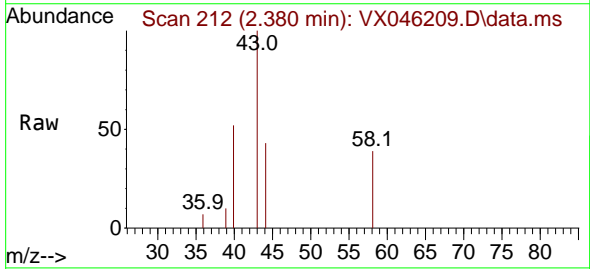


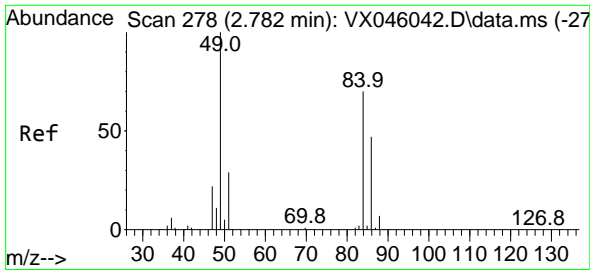
Tgt Ion: 59 Resp: 49
 Ion Ratio Lower Upper
 59 100
 57 0.0 8.6 12.8#



#16
 Acetone
 Concen: 2.527 ug/l
 RT: 2.380 min Scan# 212
 Delta R.T. -0.006 min
 Lab File: VX046209.D
 Acq: 15 May 2025 13:24

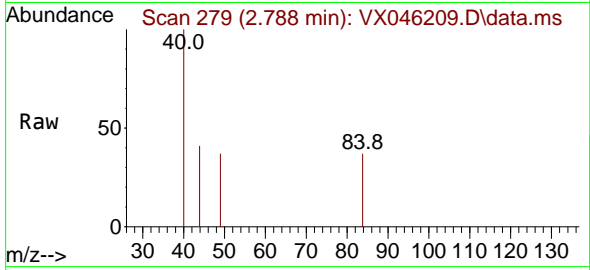
Tgt Ion: 43 Resp: 1185
 Ion Ratio Lower Upper
 43 100
 58 39.4 21.2 31.8#





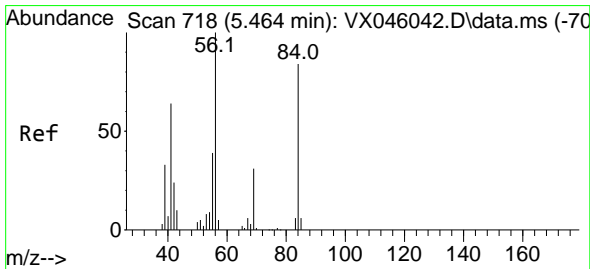
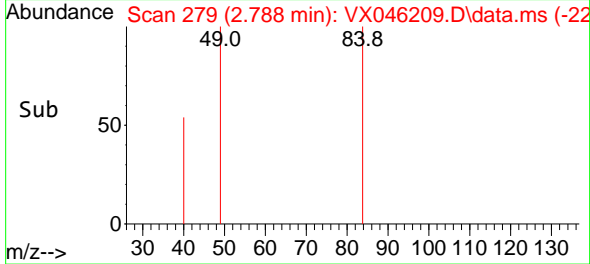
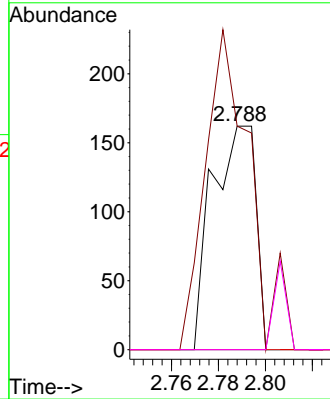
#20
 Methylene Chloride
 Concen: 0.233 ug/l
 RT: 2.788 min Scan# 21
 Delta R.T. 0.006 min
 Lab File: VX046209.D
 Acq: 15 May 2025 13:24

Instrument :
 MSVOA_X
 ClientSampleId :



Tgt Ion: 84 Resp: 209

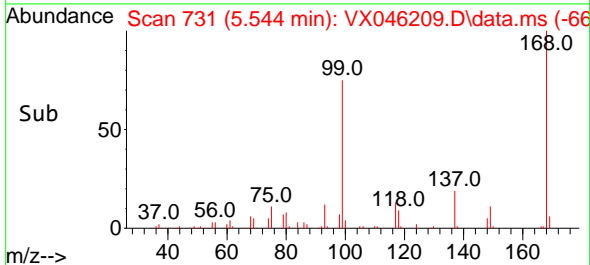
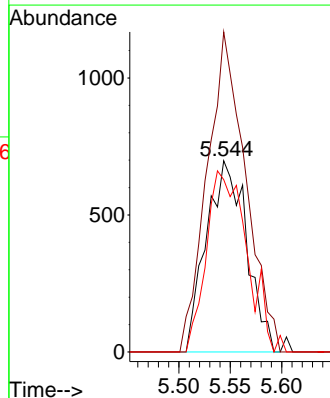
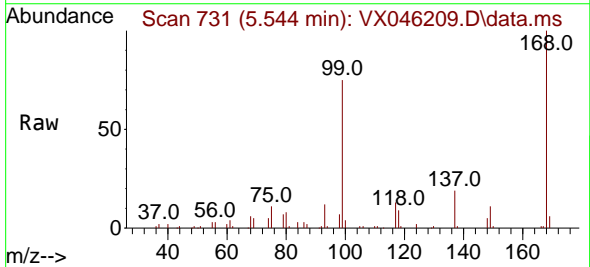
Ion	Ratio	Lower	Upper
84	100		
49	100.0	113.9	170.9#
51	0.0	33.5	50.3#
86	0.0	53.8	80.8#

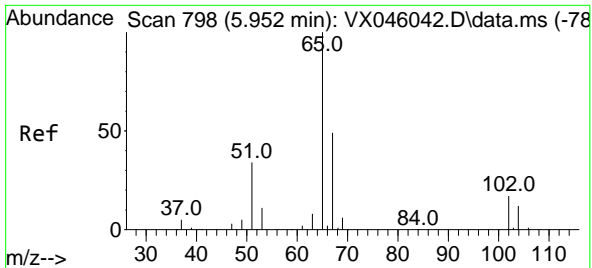


#31
 Cyclohexane
 Concen: 1.362 ug/l
 RT: 5.544 min Scan# 731
 Delta R.T. 0.079 min
 Lab File: VX046209.D
 Acq: 15 May 2025 13:24

Tgt Ion: 56 Resp: 1898

Ion	Ratio	Lower	Upper
56	100		
69	167.3	24.4	36.6#
84	90.1	66.9	100.3

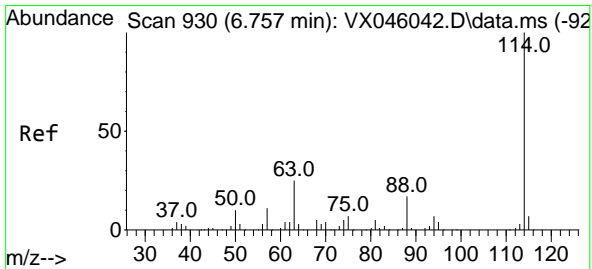
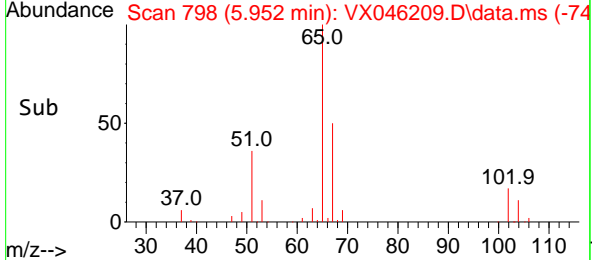
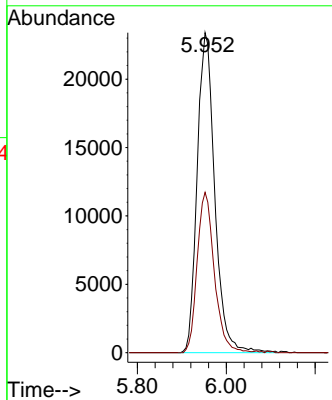
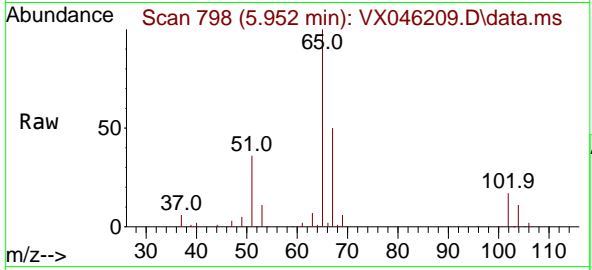




#33
 1,2-Dichloroethane-d4
 Concen: 55.104 ug/l
 RT: 5.952 min Scan# 798
 Delta R.T. -0.000 min
 Lab File: VX046209.D
 Acq: 15 May 2025 13:24

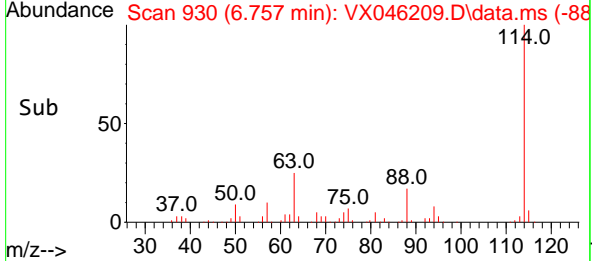
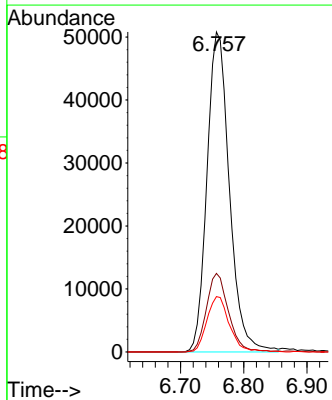
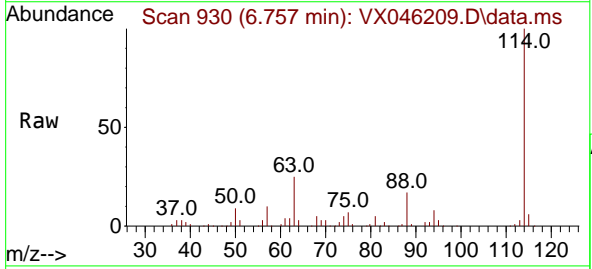
Instrument : MSVOA_X
 ClientSampleId :

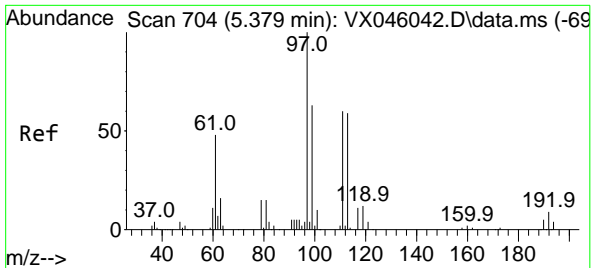
Tgt Ion	Resp	Lower	Upper
65	100		
67	48.9	0.0	99.0



#34
 1,4-Difluorobenzene
 Concen: 50.000 ug/l
 RT: 6.757 min Scan# 930
 Delta R.T. -0.000 min
 Lab File: VX046209.D
 Acq: 15 May 2025 13:24

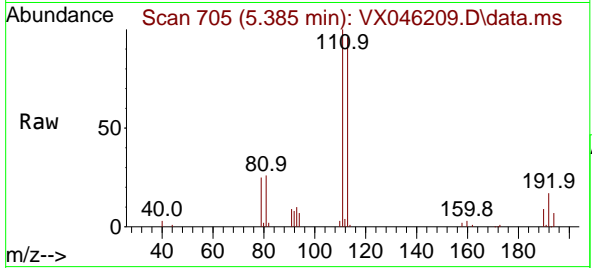
Tgt Ion	Resp	Lower	Upper
114	100		
63	24.5	0.0	49.2
88	17.3	0.0	33.6



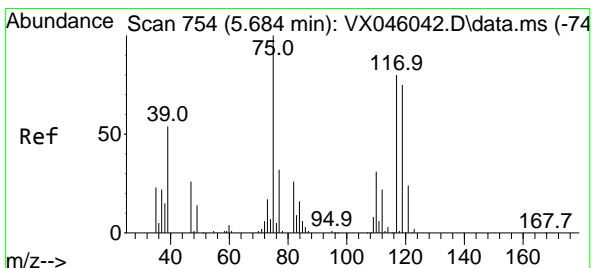
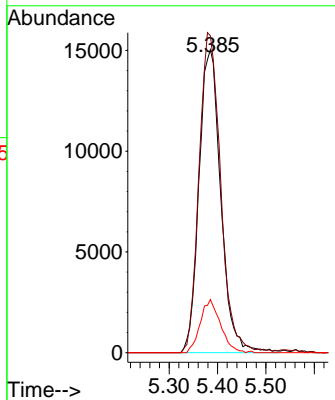
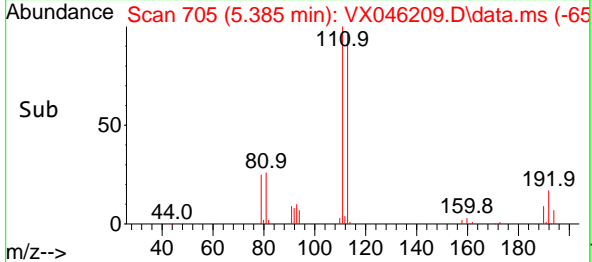


#35
 Dibromofluoromethane
 Concen: 52.248 ug/l
 RT: 5.385 min Scan# 705
 Delta R.T. 0.006 min
 Lab File: VX046209.D
 Acq: 15 May 2025 13:24

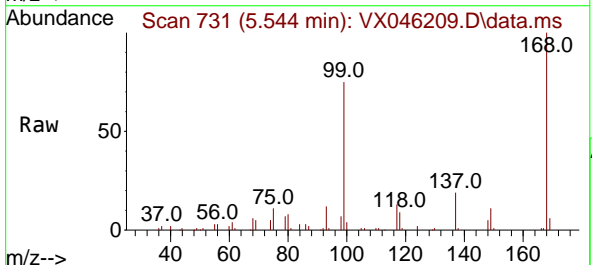
Instrument :
 MSVOA_X
 ClientSampleId :



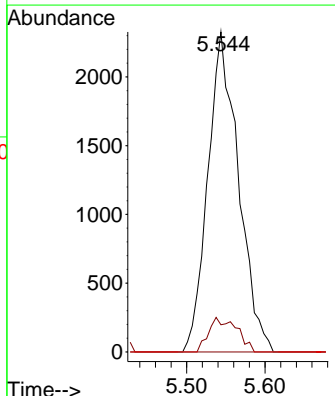
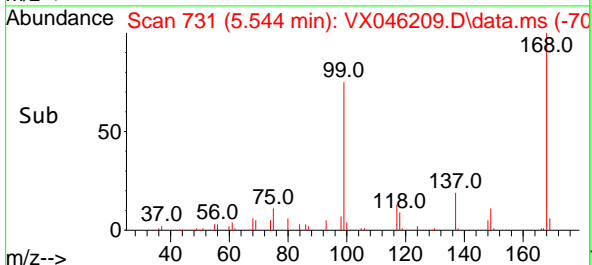
Tgt Ion:113 Resp: 47022
 Ion Ratio Lower Upper
 113 100
 111 104.9 83.1 124.7
 192 16.2 13.3 19.9

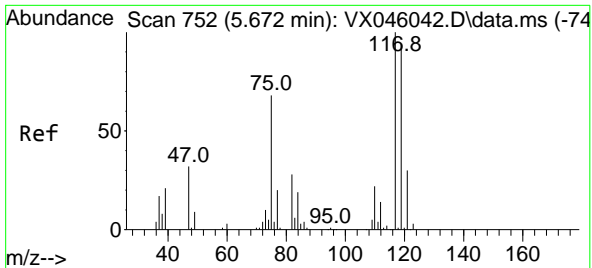


#36
 1,1-Dichloropropene
 Concen: 5.226 ug/l
 RT: 5.544 min Scan# 731
 Delta R.T. -0.140 min
 Lab File: VX046209.D
 Acq: 15 May 2025 13:24



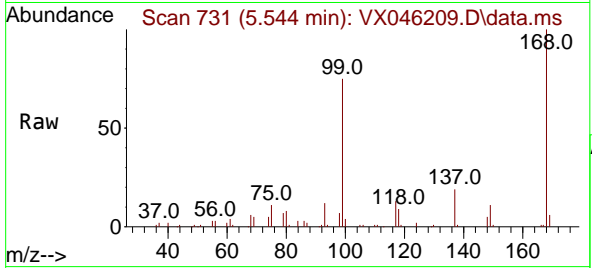
Tgt Ion: 75 Resp: 6319
 Ion Ratio Lower Upper
 75 100
 110 9.9 16.3 48.9#
 77 0.0 24.3 36.5#



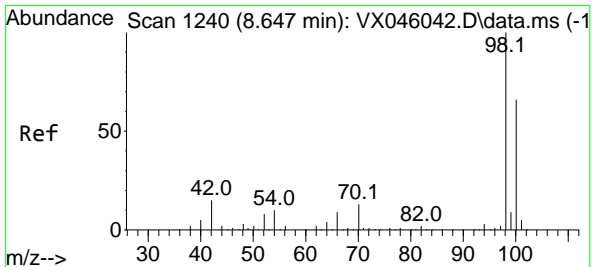
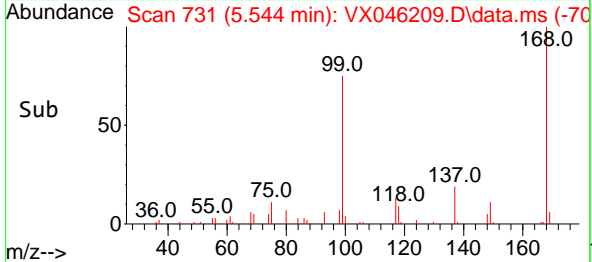
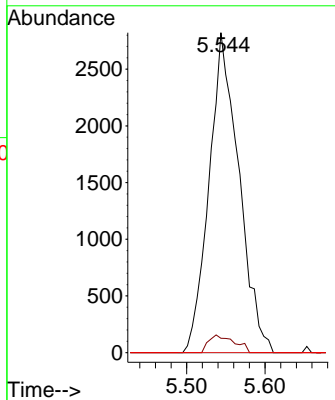


#38
 Carbon Tetrachloride
 Concen: 5.497 ug/l
 RT: 5.544 min Scan# 71
 Delta R.T. -0.128 min
 Lab File: VX046209.D
 Acq: 15 May 2025 13:24

Instrument : MSVOA_X
 ClientSampleId :

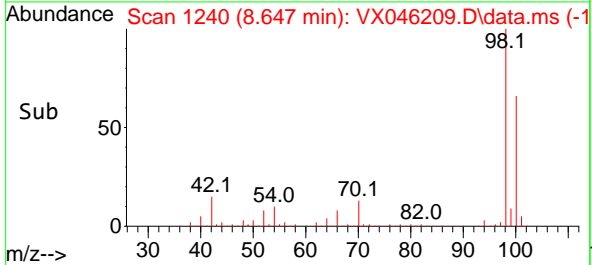
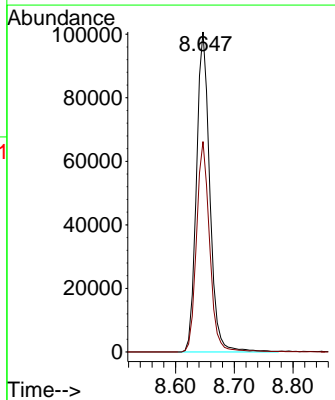
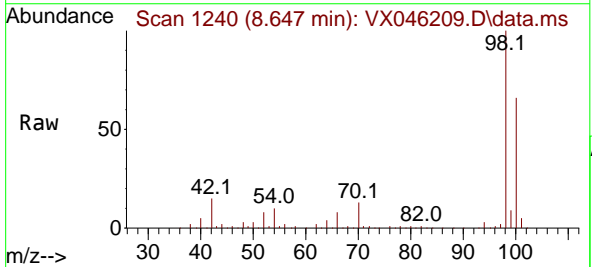


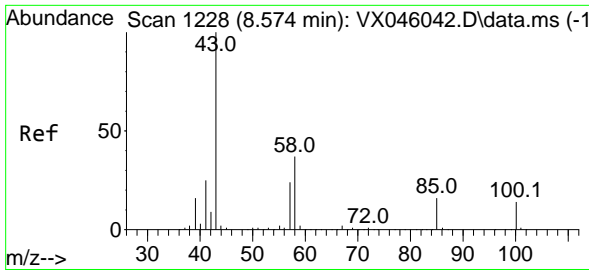
Tgt Ion:117 Resp: 7469
 Ion Ratio Lower Upper
 117 100
 119 4.5 75.2 112.8#
 121 0.0 24.2 36.4#



#50
 Toluene-d8
 Concen: 50.968 ug/l
 RT: 8.647 min Scan# 1240
 Delta R.T. -0.000 min
 Lab File: VX046209.D
 Acq: 15 May 2025 13:24

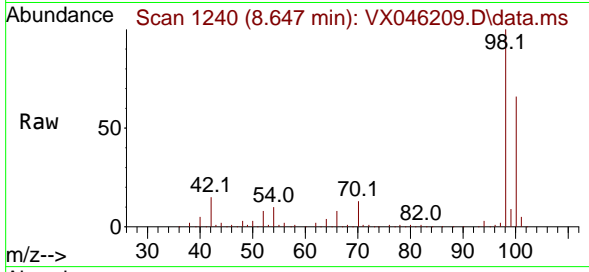
Tgt Ion: 98 Resp: 158764
 Ion Ratio Lower Upper
 98 100
 100 64.9 53.5 80.3



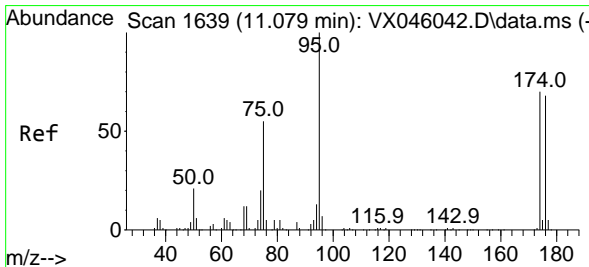
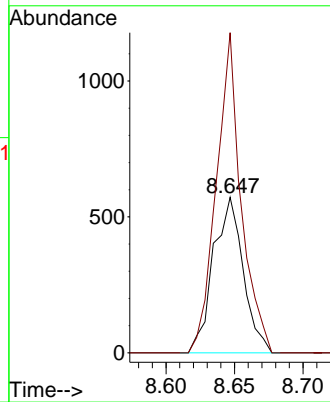
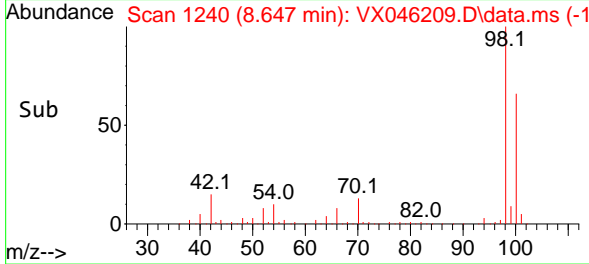


#51
 4-Methyl-2-Pentanone
 Concen: 0.572 ug/l
 RT: 8.647 min Scan# 11
 Delta R.T. 0.073 min
 Lab File: VX046209.D
 Acq: 15 May 2025 13:24

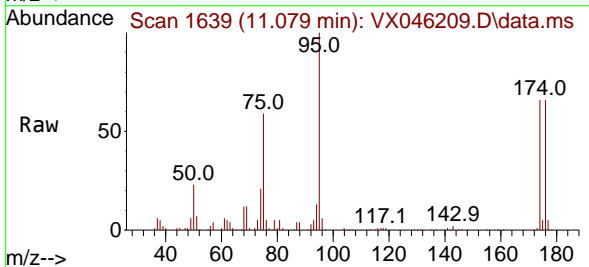
Instrument :
 MSVOA_X
 ClientSampleId :



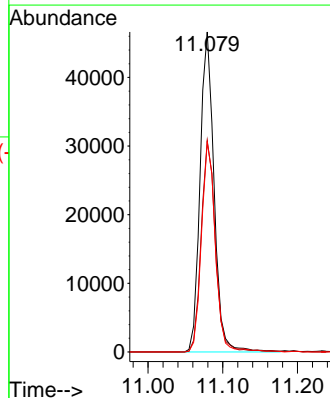
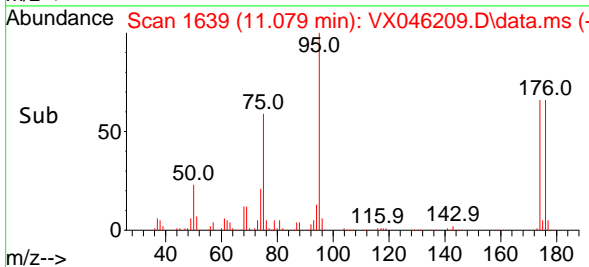
Tgt Ion: 43 Resp: 866
 Ion Ratio Lower Upper
 43 100
 58 171.4 28.9 43.3#

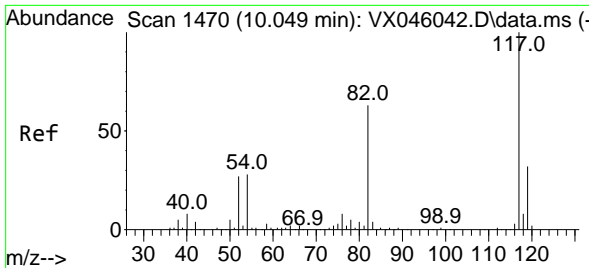


#62
 4-Bromofluorobenzene
 Concen: 50.686 ug/l
 RT: 11.079 min Scan# 1639
 Delta R.T. -0.000 min
 Lab File: VX046209.D
 Acq: 15 May 2025 13:24



Tgt Ion: 95 Resp: 60562
 Ion Ratio Lower Upper
 95 100
 174 67.3 0.0 135.8
 176 65.4 0.0 131.4



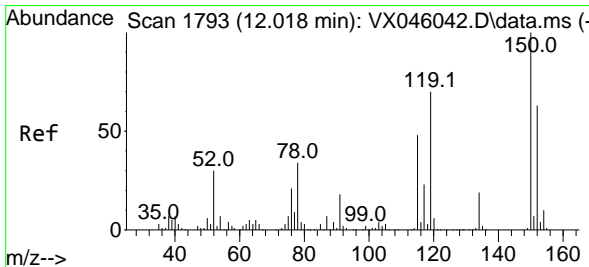
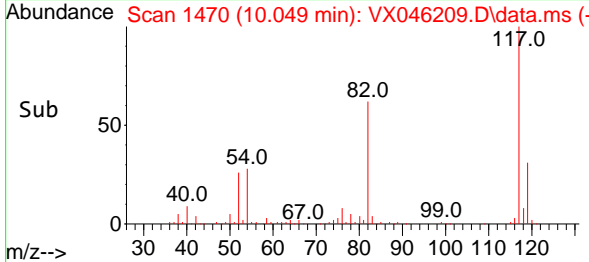
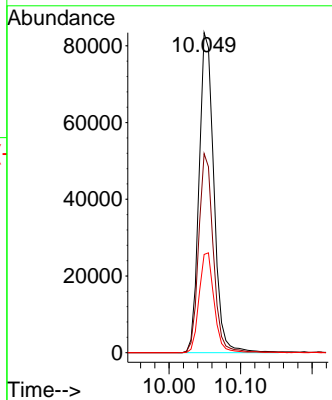
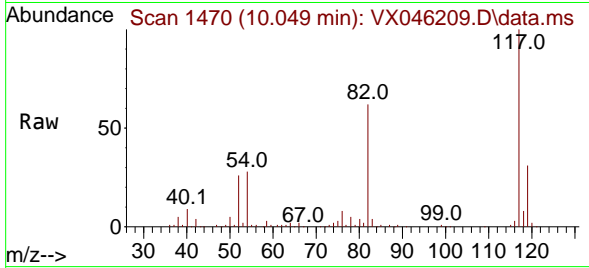


#63
 Chlorobenzene-d5
 Concen: 50.000 ug/l
 RT: 10.049 min Scan# 1470
 Delta R.T. -0.000 min
 Lab File: VX046209.D
 Acq: 15 May 2025 13:24

Instrument : MSVOA_X
 ClientSampleId :

Tgt Ion:117 Resp: 119897

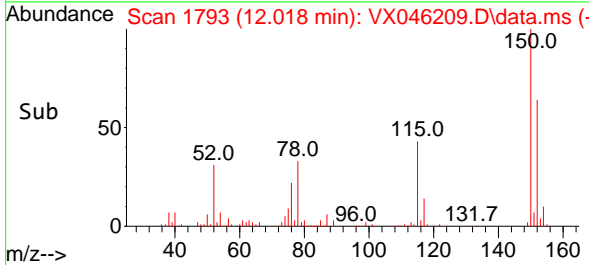
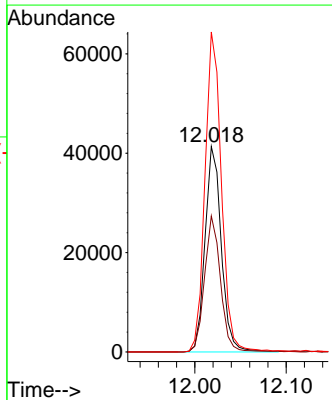
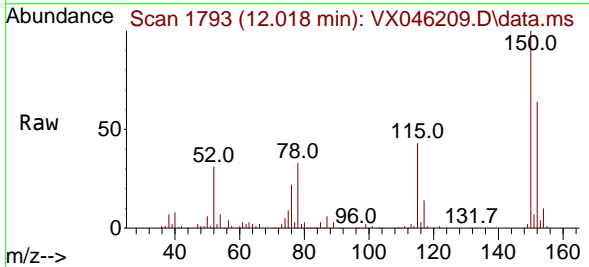
Ion	Ratio	Lower	Upper
117	100		
82	62.2	50.6	76.0
119	30.7	25.8	38.6

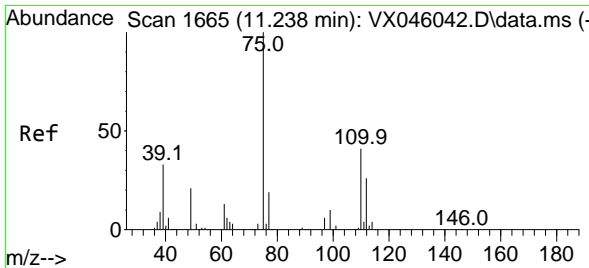


#72
 1,4-Dichlorobenzene-d4
 Concen: 50.000 ug/l
 RT: 12.018 min Scan# 1793
 Delta R.T. -0.000 min
 Lab File: VX046209.D
 Acq: 15 May 2025 13:24

Tgt Ion:152 Resp: 51079

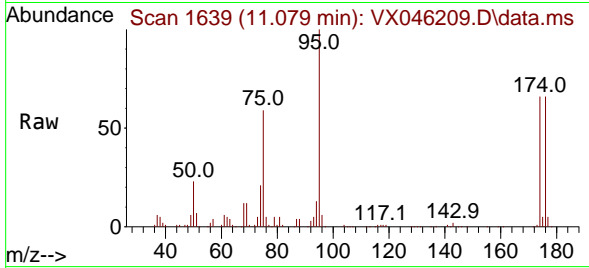
Ion	Ratio	Lower	Upper
152	100		
115	65.2	46.9	140.7
150	157.4	0.0	351.0



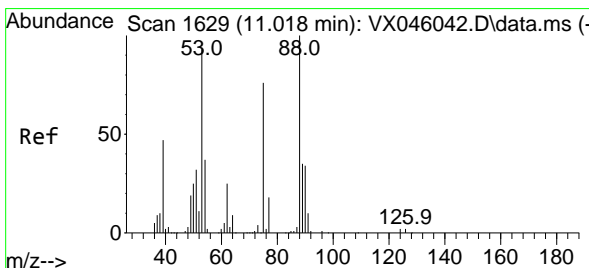
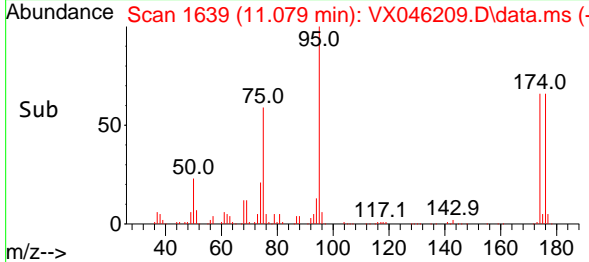
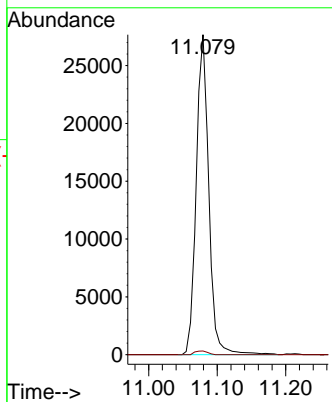


#76
 1,2,3-Trichloropropane
 Concen: 28.712 ug/l
 RT: 11.079 min Scan# 1639
 Delta R.T. -0.159 min
 Lab File: VX046209.D
 Acq: 15 May 2025 13:24

Instrument : MSVOA_X
 ClientSampleId :



Tgt Ion: 75 Resp: 35301
 Ion Ratio Lower Upper
 75 100
 77 1.2 20.5 61.5#



#81
 trans-1,4-Dichloro-2-butene
 Concen: 93.476 ug/l
 RT: 11.079 min Scan# 1639
 Delta R.T. 0.061 min
 Lab File: VX046209.D
 Acq: 15 May 2025 13:24

Tgt Ion: 75 Resp: 35301
 Ion Ratio Lower Upper
 75 100
 53 0.0 100.5 150.7#
 89 0.0 37.0 55.6#

