

Data Path : Z:\VOASRV\HPCHEM1\MSVOA X\DATA\VX051619\
 Data File : VX009599.D
 Acq On : 16 May 2019 12:03
 Operator : JC/SP
 Sample : K2857-03
 Misc : 5.0mL/MSVOA X/WATER
 ALS Vial : 7 Sample Multiplier: 1

Instrument :
 MSVOA_X
 ClientSampleId :
 FB-190514

Integration Parameters: RTEINT.P
 Integrator: RTE
 Smoothing : ON Filtering: 5
 Sampling : 1 Min Area: 3 % of largest Peak
 Start Thrs: 0.2 Max Peaks: 100
 Stop Thrs : 0 Peak Location: TOP

If leading or trailing edge < 100 prefer < Baseline drop else tangent >
 Peak separation: 5

Method : Z:\VOASRV\HPCHEM1\MSVOA_X\METHOD\82X042919W.M
 Title : SW846 8260

Signal : TIC

peak #	R.T. min	first scan	max scan	last scan	PK TY	peak height	corr. area	corr. % max.	% of total
1	1.282	14	21	26	rBV	12578	14762	1.56%	0.311%
2	1.611	68	75	80	rVB6	5737	12832	1.35%	0.270%
3	2.446	205	212	220	rVB	6579	12259	1.29%	0.258%
4	2.605	230	238	248	rBV	9469	19280	2.03%	0.406%
5	5.501	701	713	726	rBV	102262	293383	30.93%	6.176%
6	5.665	728	740	752	rVV	180219	511961	53.97%	10.777%
7	6.061	795	805	819	rBV	125582	331037	34.90%	6.968%
8	6.860	925	936	952	rBV	292658	688292	72.56%	14.489%
9	8.713	1233	1240	1249	rBV	617857	948532	100.00%	19.967%
10	10.110	1463	1469	1479	rBV	569289	763604	80.50%	16.074%
11	11.134	1631	1637	1648	rBV	436576	552743	58.27%	11.635%
12	12.079	1786	1792	1804	rBV	471456	601806	63.45%	12.668%

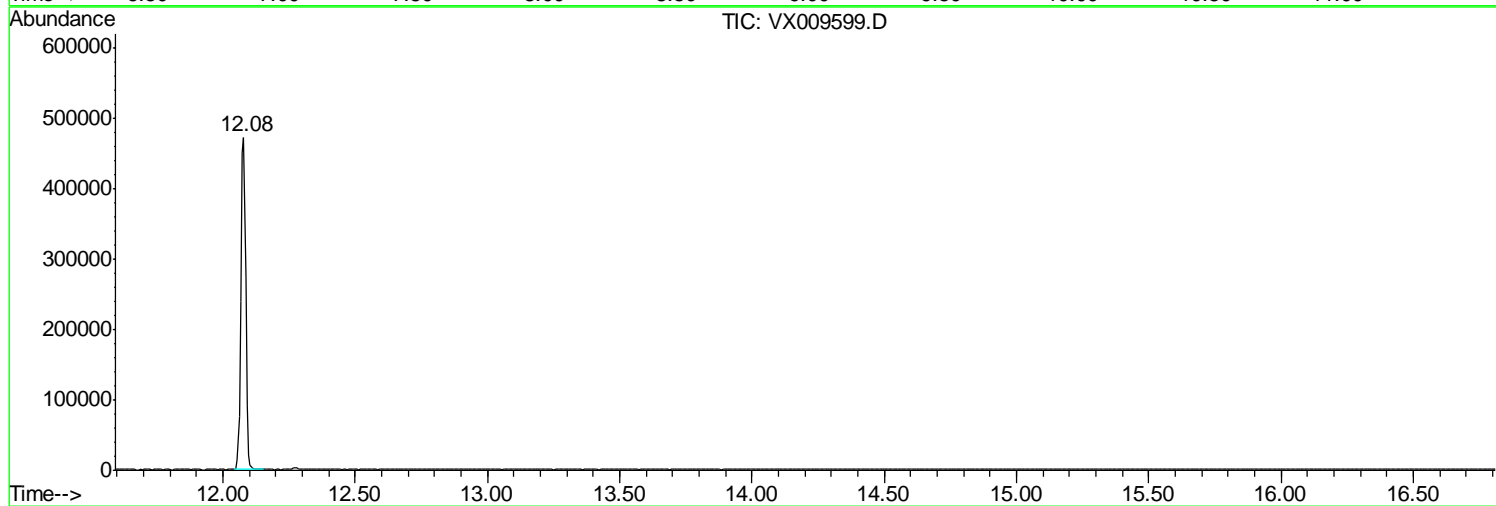
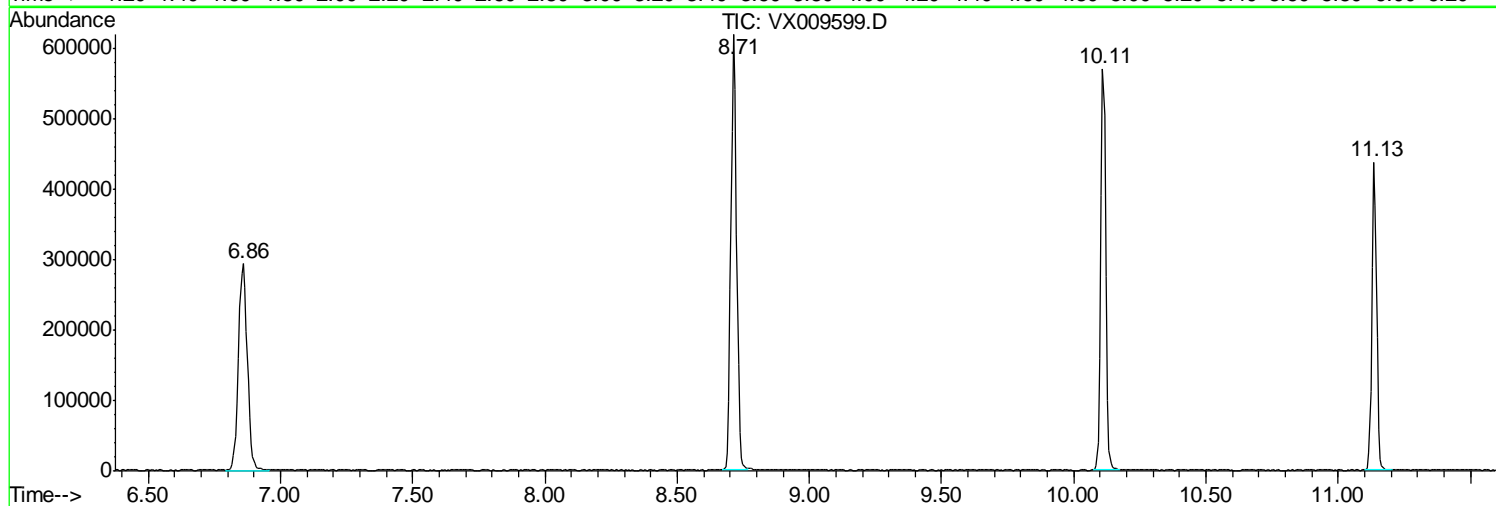
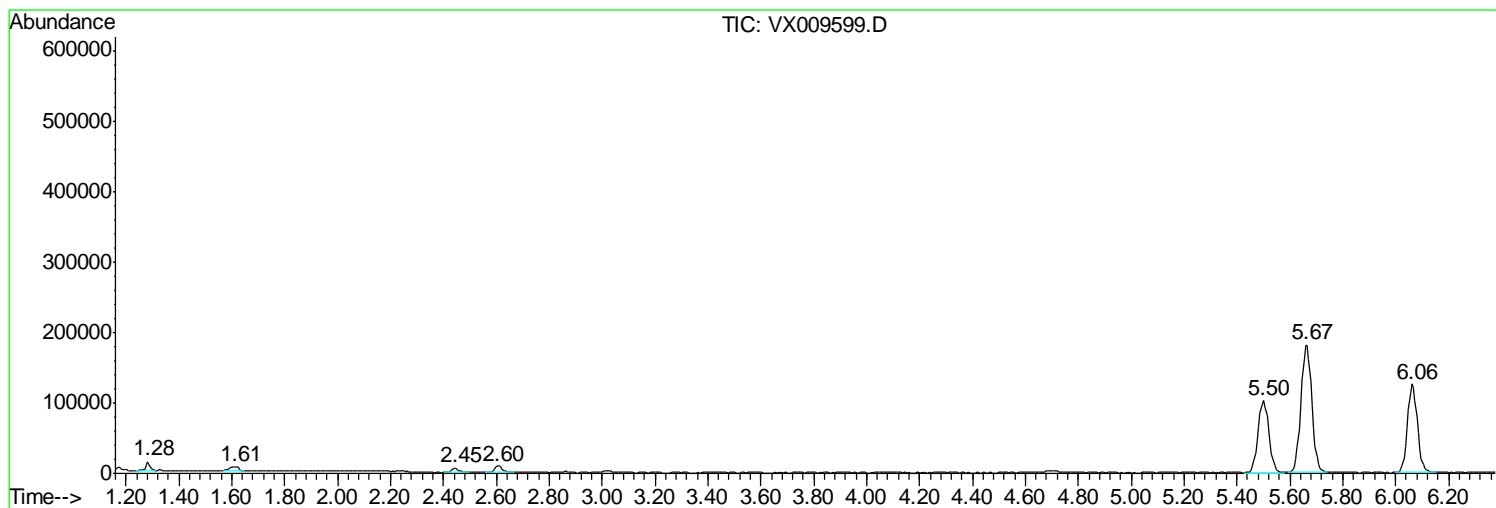
Sum of corrected areas: 4750491

Data Path : Z:\VOASRV\HPCHEM1\MSVOA X\DATA\VX051619\
Data File : VX009599.D
Acq On : 16 May 2019 12:03
Operator : JC/SP
Sample : K2857-03
Misc : 5.0mL/MSVOA X/WATER
ALS Vial : 7 Sample Multiplier: 1

Instrument :
MSVOA_X
ClientSampled :
FB-190514

Quant Method : Z:\VOASRV\HPCHEM1\MSVOA_X\METHOD\82X042919W.M
Quant Title : SW846 8260

TIC Library : C:\DATABASE\NIST11.L
TIC Integration Parameters: LSCINT.P



Data Path : Z:\VOASRV\HPCHEM1\MSVOA_X\DATA\VX051619\
Data File : VX009599.D
Acq On : 16 May 2019 12:03
Operator : JC/SP
Sample : K2857-03
Misc : 5.0mL/MSVOA_X/WATER
ALS Vial : 7 Sample Multiplier: 1

Instrument :
MSVOA_X
ClientSampleId :
FB-190514

Quant Method : Z:\VOASRV\HPCHEM1\MSVOA_X\METHOD\82X042919W.M
Quant Title : SW846 8260

TIC Library : C:\DATABASE\NIST11.L
TIC Integration Parameters: LSCINT.P

No Library Search Compounds Detected

Data Path : Z:\VOASRV\HPCHEM1\MSVOA_X\DATA\VX051619\
Data File : VX009599.D
Acq On : 16 May 2019 12:03
Operator : JC/SP
Sample : K2857-03
Misc : 5.0mL/MSVOA_X/WATER
ALS Vial : 7 Sample Multiplier: 1

Instrument :
MSVOA_X
ClientSampleId :
FB-190514

Quant Method : Z:\VOASRV\HPCHEM1\MSVOA_X\METHOD\82X042919W.M
Quant Title : SW846 8260

TIC Library : C:\DATABASE\NIST11.L
TIC Integration Parameters: LSCINT.P

TIC Top Hit name	RT	EstConc	Units	Response	--Internal Standard--			
					#	RT	Resp	Conc
