

Data Path : Z:\voasrv\HPCHEM1\MSVOA_X\Data\VX051623\
 Data File : VX035680.D
 Acq On : 16 May 2023 10:33
 Operator : JC/MD
 Sample : VX0516MBL01
 Misc : 5.00g/10mL/100uL/5.00mL/MSVOA_X/MEOH
 ALS Vial : 3 Sample Multiplier: 1

Instrument :
 MSVOA_X
 ClientSampleId :
 VX0516MBL01

Quant Time: May 17 05:25:25 2023
 Quant Method : Z:\voasrv\HPCHEM1\MSVOA_X\Method\82X051123W.M
 Quant Title : SW846 8260
 QLast Update : Thu May 11 13:57:54 2023
 Response via : Initial Calibration

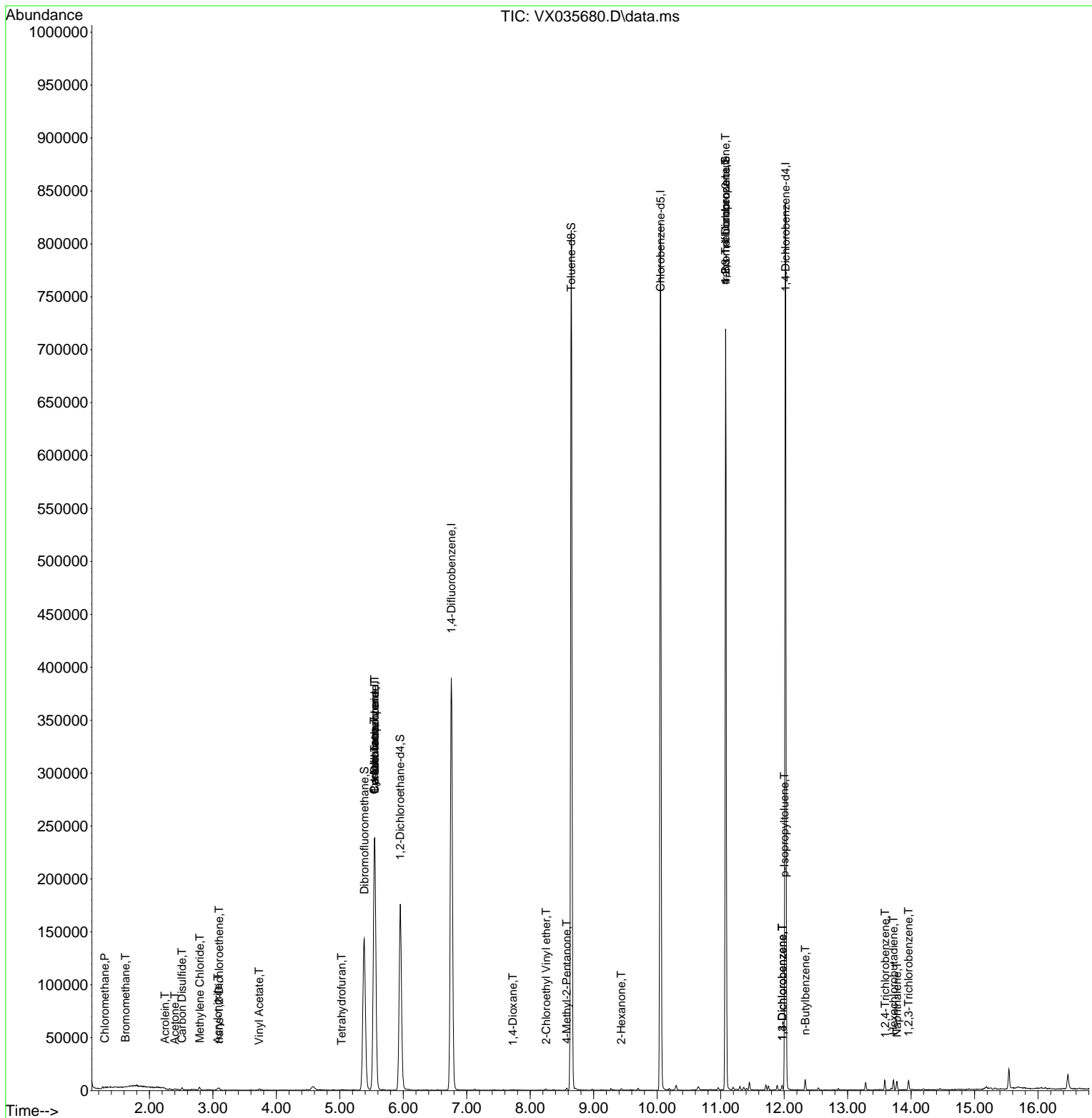
Compound	R.T.	QIon	Response	Conc	Units	Dev(Min)
Internal Standards						
1) Pentafluorobenzene	5.550	168	200718	50.000	ug/l	# 0.00
34) 1,4-Difluorobenzene	6.757	114	370565	50.000	ug/l	0.00
63) Chlorobenzene-d5	10.055	117	342681	50.000	ug/l	0.00
72) 1,4-Dichlorobenzene-d4	12.024	152	161104	50.000	ug/l	0.00
System Monitoring Compounds						
33) 1,2-Dichloroethane-d4	5.952	65	170875	48.799	ug/l	0.00
Spiked Amount	50.000	Range	78 - 117	Recovery	=	97.600%
35) Dibromofluoromethane	5.385	113	122825	49.148	ug/l	0.00
Spiked Amount	50.000	Range	75 - 124	Recovery	=	98.300%
50) Toluene-d8	8.647	98	454479	49.227	ug/l	0.00
Spiked Amount	50.000	Range	92 - 112	Recovery	=	98.460%
62) 4-Bromofluorobenzene	11.079	95	188350	50.669	ug/l	0.00
Spiked Amount	50.000	Range	83 - 123	Recovery	=	101.340%
Target Compounds						
						Qvalue
3) Chloromethane	1.294	50	643	0.203	ug/l	93
5) Bromomethane	1.624	94	431	0.295	ug/l	# 39
13) Acrolein	2.245	56	546	0.745	ug/l	97
15) Acrylonitrile	3.081	53	1058	0.778	ug/l	99
16) Acetone	2.398	43	1702	1.131	ug/l	# 79
17) Carbon Disulfide	2.514	76	2467	0.457	ug/l	# 94
20) Methylene Chloride	2.794	84	1136	0.416	ug/l	# 78
21) trans-1,2-Dichloroethene	3.099	96	590	0.241	ug/l	# 83
23) Vinyl Acetate	3.727	43	1866	0.281	ug/l	# 72
29) Tetrahydrofuran	5.025	42	443	0.338	ug/l	# 55
31) Cyclohexane	5.544	56	5646	1.276	ug/l	# 23
36) 1,1-Dichloropropene	5.550	75	19996	5.069	ug/l	# 50
38) Carbon Tetrachloride	5.550	117	23508	6.291	ug/l	# 15
49) 1,4-Dioxane	7.726	88	341	6.341	ug/l	# 55
51) 4-Methyl-2-Pentanone	8.574	43	1115	0.270	ug/l	99
58) 2-Chloroethyl Vinyl ether	8.250	63	604	0.268	ug/l	93
59) 2-Hexanone	9.433	43	973	0.313	ug/l	99
76) 1,2,3-Trichloropropane	11.079	75	105424	26.753	ug/l	# 34
81) trans-1,4-Dichloro-2-b...	11.079	75	105424	86.221	ug/l	# 8
86) p-Isopropyltoluene	12.006	119	2329	0.201	ug/l	# 72
87) 1,3-Dichlorobenzene	11.969	146	1414	0.242	ug/l	94
88) 1,4-Dichlorobenzene	11.969	146	1414	0.239	ug/l	94
89) n-Butylbenzene	12.335	91	2613	0.248	ug/l	98
93) 1,2,4-Trichlorobenzene	13.591	180	1970	0.571	ug/l	92
94) Hexachlorobutadiene	13.725	225	1382	1.009	ug/l	90
95) Naphthalene	13.780	128	5154	0.436	ug/l	# 94
96) 1,2,3-Trichlorobenzene	13.963	180	1983	0.584	ug/l	96

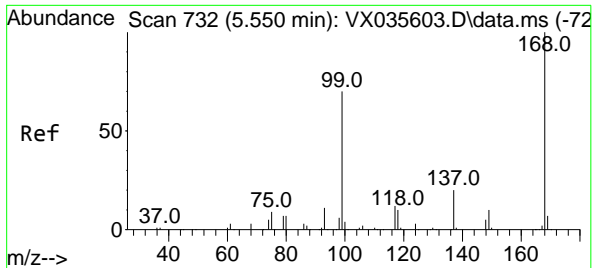
(#) = qualifier out of range (m) = manual integration (+) = signals summed

Data Path : Z:\voasrv\HPCHEM1\MSVOA_X\Data\VX051623\
 Data File : VX035680.D
 Acq On : 16 May 2023 10:33
 Operator : JC/MD
 Sample : VX0516MBL01
 Misc : 5.00g/10mL/100uL/5.00mL/MSVOA_X/MEOH
 ALS Vial : 3 Sample Multiplier: 1

Instrument :
 MSVOA_X
 ClientSampleId :
 VX0516MBL01

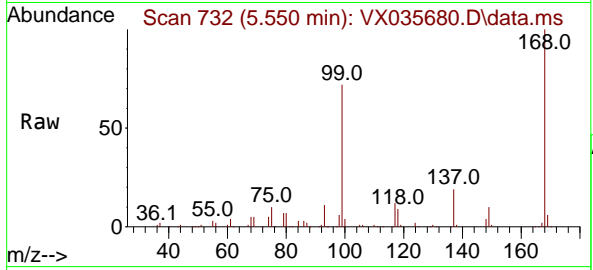
Quant Time: May 17 05:25:25 2023
 Quant Method : Z:\voasrv\HPCHEM1\MSVOA_X\Method\82X051123W.M
 Quant Title : SW846 8260
 QLast Update : Thu May 11 13:57:54 2023
 Response via : Initial Calibration



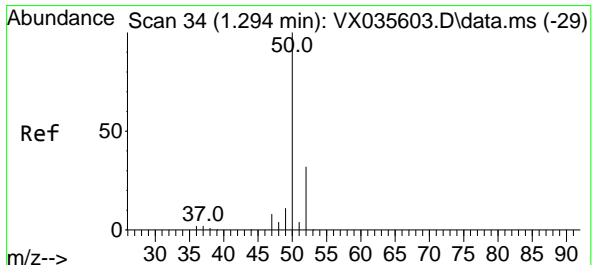
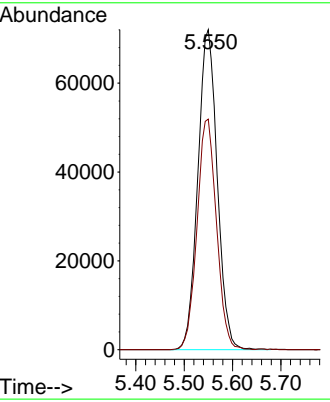
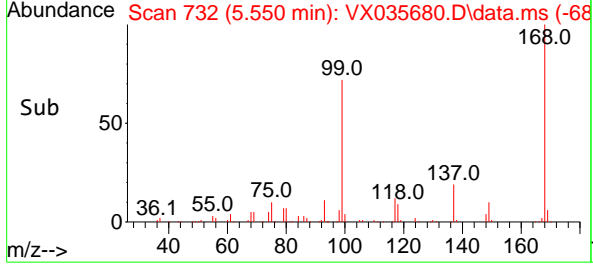


#1
 Pentafluorobenzene
 Concen: 50.000 ug/l
 RT: 5.550 min Scan# 71
 Delta R.T. -0.000 min
 Lab File: VX035680.D
 Acq: 16 May 2023 10:33

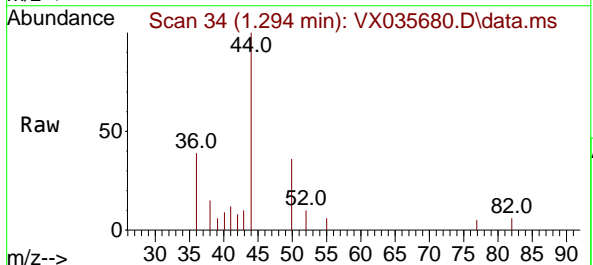
Instrument : MSVOA_X
 ClientSampleId : VX0516MBL01



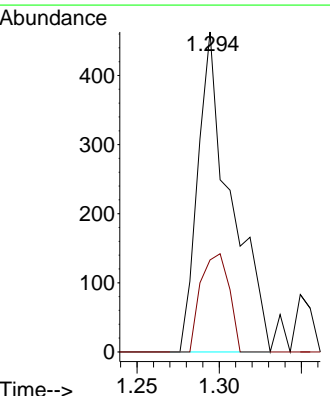
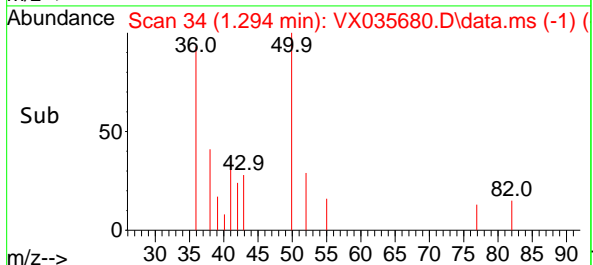
Tgt Ion:168 Resp: 200718
 Ion Ratio Lower Upper
 168 100
 99 72.0 45.7 68.5#

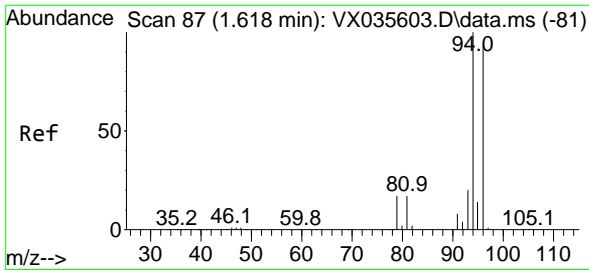


#3
 Chloromethane
 Concen: 0.203 ug/l
 RT: 1.294 min Scan# 34
 Delta R.T. 0.000 min
 Lab File: VX035680.D
 Acq: 16 May 2023 10:33



Tgt Ion: 50 Resp: 643
 Ion Ratio Lower Upper
 50 100
 52 28.7 25.9 38.9

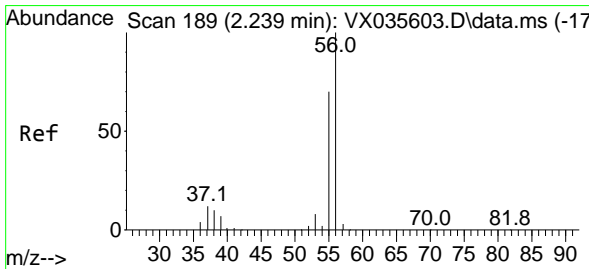
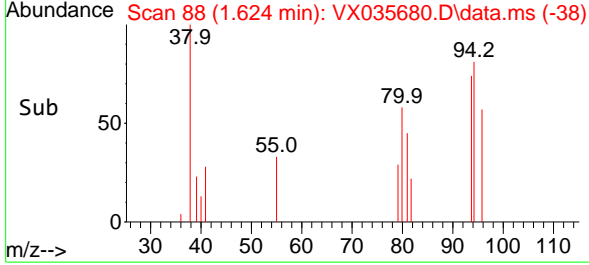
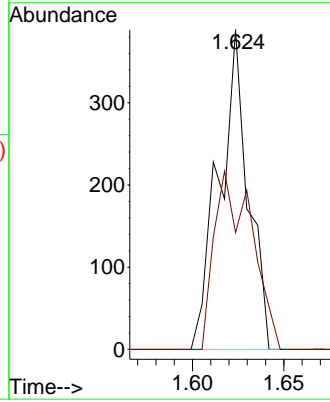
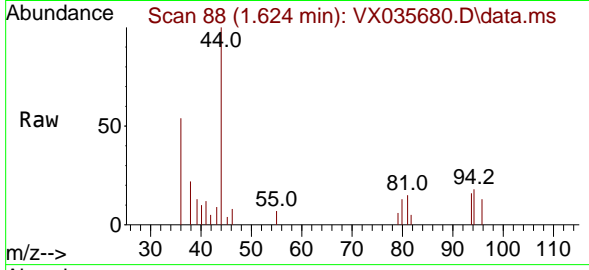




#5
 Bromomethane
 Concen: 0.295 ug/l
 RT: 1.624 min Scan# 81
 Delta R.T. 0.006 min
 Lab File: VX035680.D
 Acq: 16 May 2023 10:33

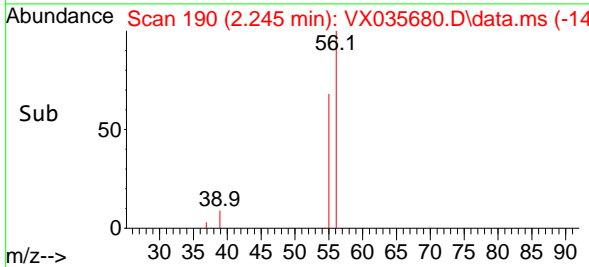
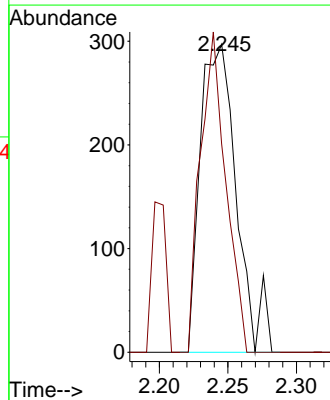
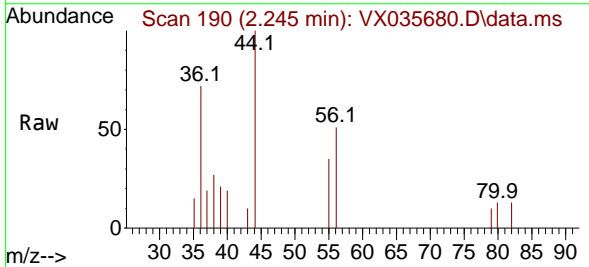
Instrument :
 MSVOA_X
 ClientSampleId :
 VX0516MBL01

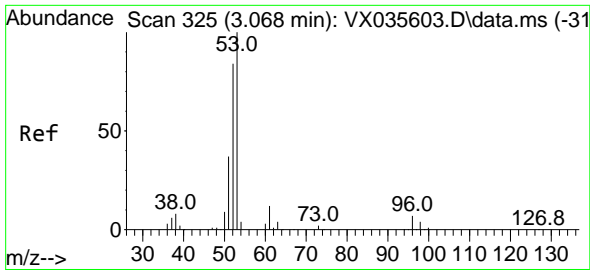
Tgt Ion: 94 Resp: 431
 Ion Ratio Lower Upper
 94 100
 96 36.5 77.0 115.6#



#13
 Acrolein
 Concen: 0.745 ug/l
 RT: 2.245 min Scan# 190
 Delta R.T. 0.006 min
 Lab File: VX035680.D
 Acq: 16 May 2023 10:33

Tgt Ion: 56 Resp: 546
 Ion Ratio Lower Upper
 56 100
 55 73.3 56.6 85.0

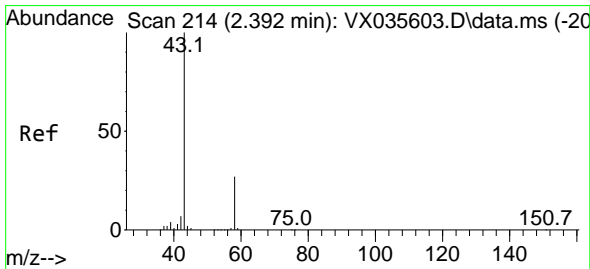
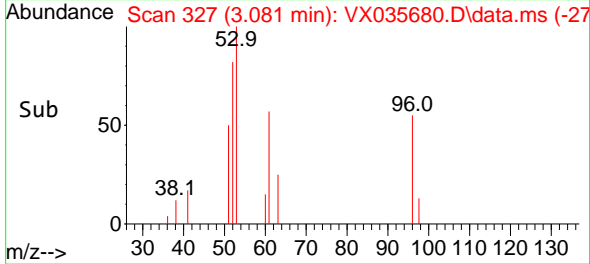
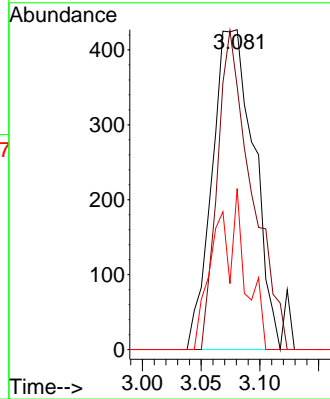
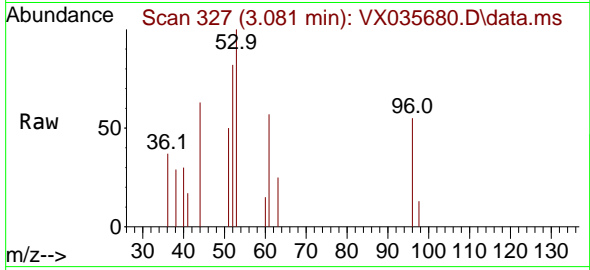




#15
 Acrylonitrile
 Concen: 0.778 ug/l
 RT: 3.081 min Scan# 31
 Delta R.T. 0.013 min
 Lab File: VX035680.D
 Acq: 16 May 2023 10:33

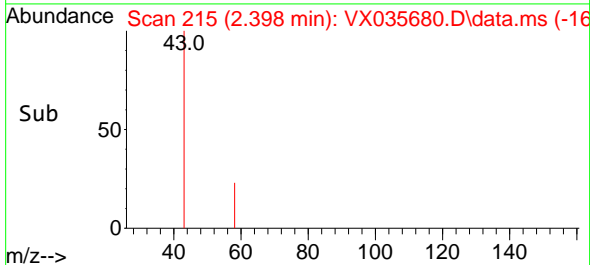
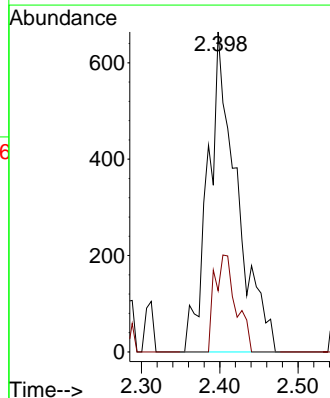
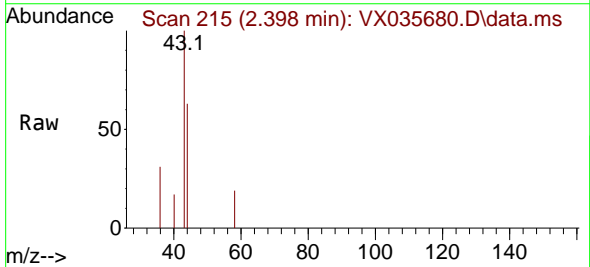
Instrument :
 MSVOA_X
 ClientSampleId :
 VX0516MBL01

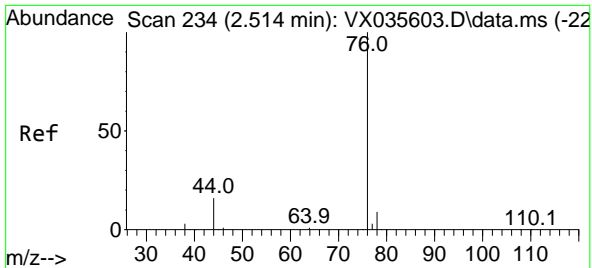
Tgt Ion: 53 Resp: 1058
 Ion Ratio Lower Upper
 53 100
 52 81.6 66.2 99.2
 51 36.3 28.3 42.5



#16
 Acetone
 Concen: 1.131 ug/l
 RT: 2.398 min Scan# 215
 Delta R.T. 0.006 min
 Lab File: VX035680.D
 Acq: 16 May 2023 10:33

Tgt Ion: 43 Resp: 1702
 Ion Ratio Lower Upper
 43 100
 58 19.1 24.7 37.1#



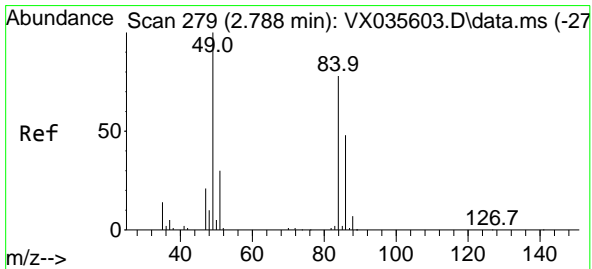
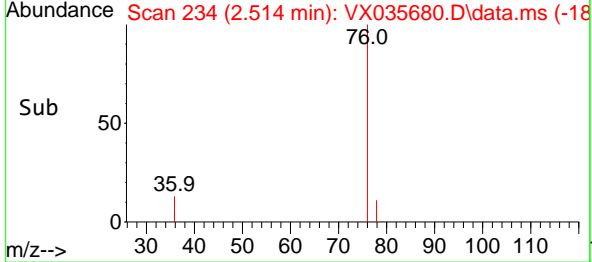
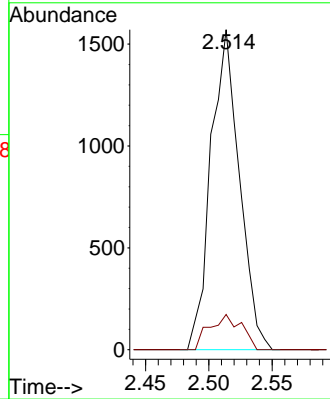
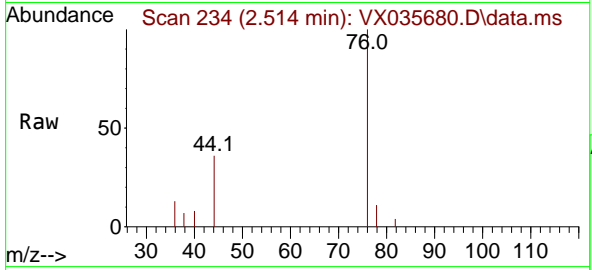


#17
 Carbon Disulfide
 Concen: 0.457 ug/l
 RT: 2.514 min Scan# 21
 Delta R.T. -0.000 min
 Lab File: VX035680.D
 Acq: 16 May 2023 10:33

Instrument : MSVOA_X
 ClientSampleId : VX0516MBL01

Tgt Ion: 76 Resp: 2467

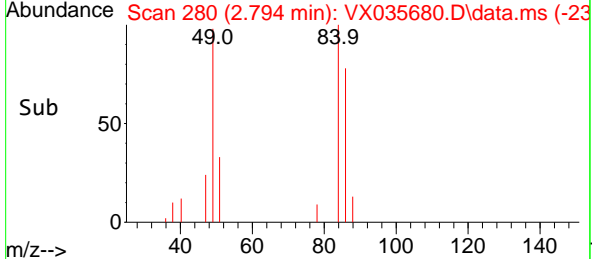
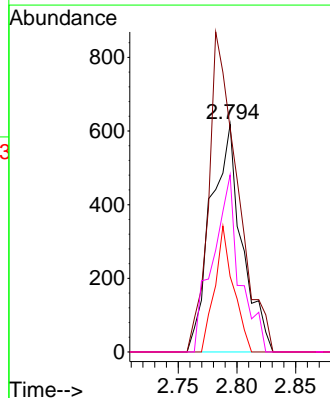
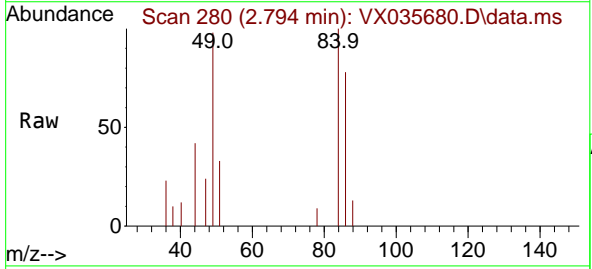
Ion	Ratio	Lower	Upper
76	100		
78	11.0	7.2	10.8#

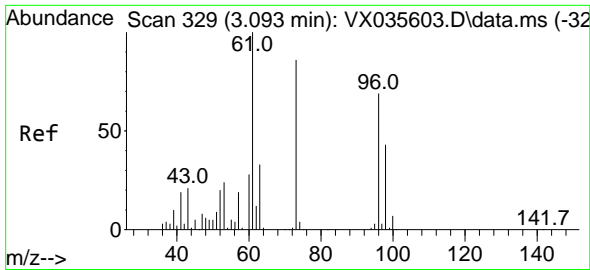


#20
 Methylene Chloride
 Concen: 0.416 ug/l
 RT: 2.794 min Scan# 280
 Delta R.T. 0.006 min
 Lab File: VX035680.D
 Acq: 16 May 2023 10:33

Tgt Ion: 84 Resp: 1136

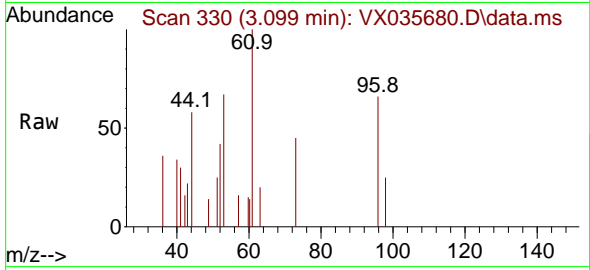
Ion	Ratio	Lower	Upper
84	100		
49	98.2	103.8	155.8#
51	33.2	31.8	47.8
86	77.8	51.4	77.2#



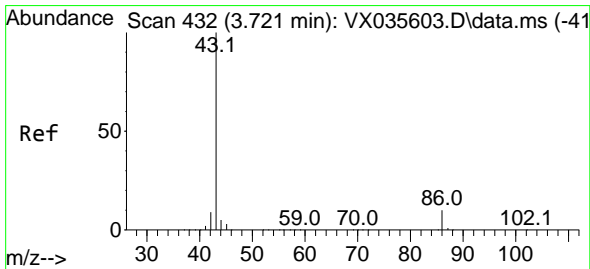
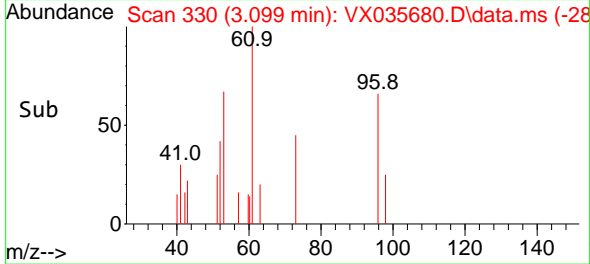
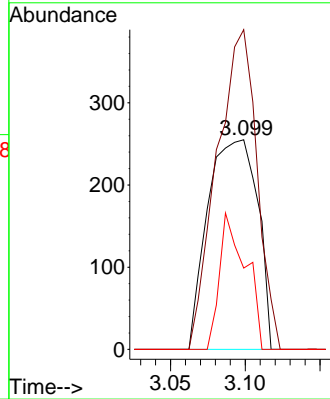


#21
 trans-1,2-Dichloroethene
 Concen: 0.241 ug/l
 RT: 3.099 min Scan# 31
 Delta R.T. 0.006 min
 Lab File: VX035680.D
 Acq: 16 May 2023 10:33

Instrument :
 MSVOA_X
 ClientSampleId :
 VX0516MBL01

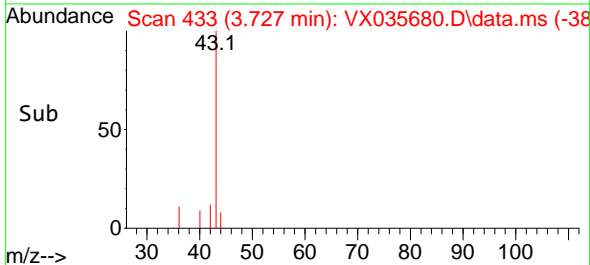
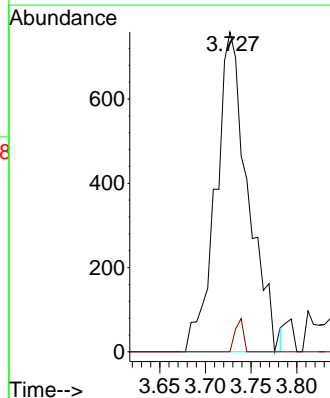
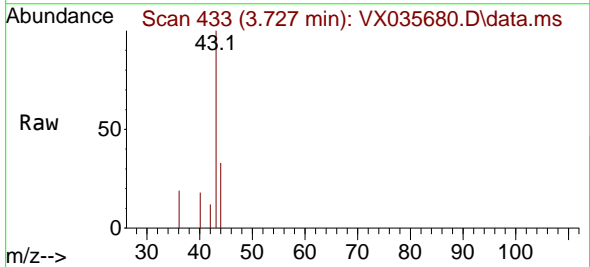


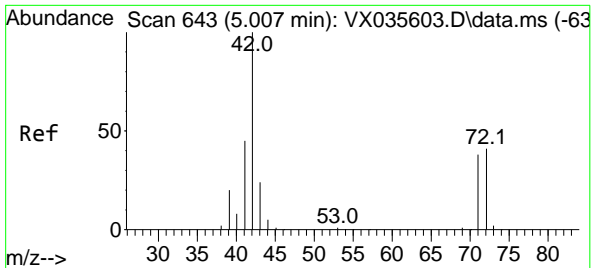
Tgt Ion: 96 Resp: 590
 Ion Ratio Lower Upper
 96 100
 61 152.5 113.0 169.6
 98 38.8 52.1 78.1#



#23
 Vinyl Acetate
 Concen: 0.281 ug/l
 RT: 3.727 min Scan# 433
 Delta R.T. 0.006 min
 Lab File: VX035680.D
 Acq: 16 May 2023 10:33

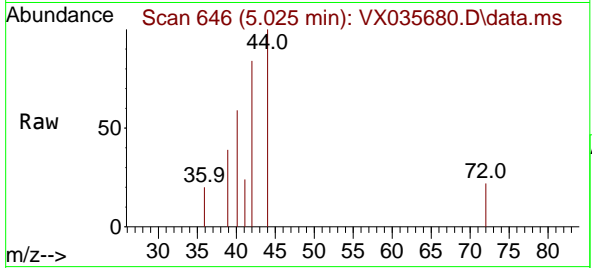
Tgt Ion: 43 Resp: 1866
 Ion Ratio Lower Upper
 43 100
 86 0.0 8.5 12.7#



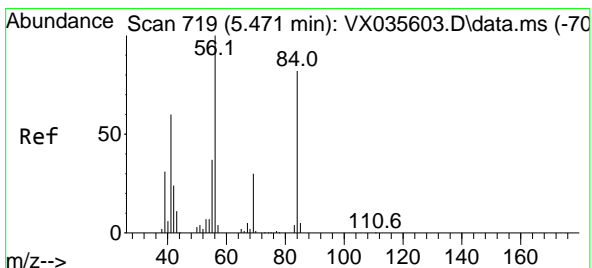
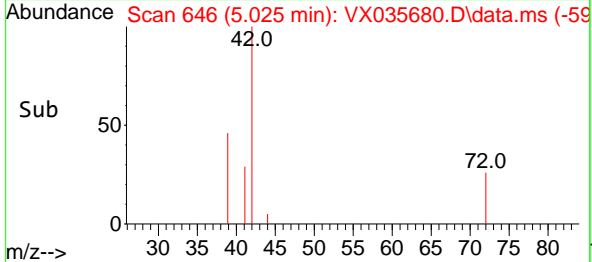
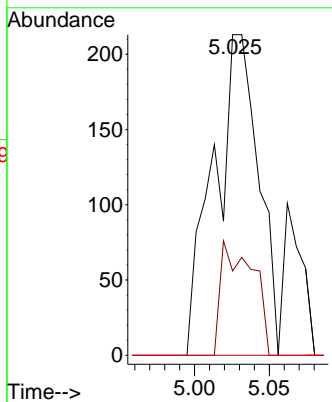


#29
 Tetrahydrofuran
 Concen: 0.338 ug/l
 RT: 5.025 min Scan# 646
 Delta R.T. 0.018 min
 Lab File: VX035680.D
 Acq: 16 May 2023 10:33

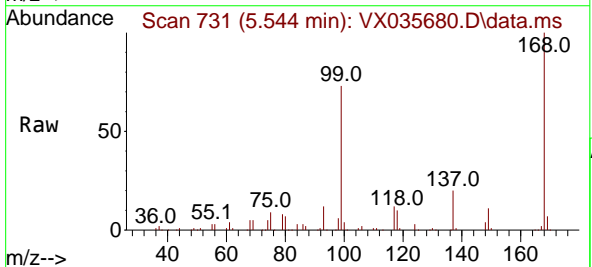
Instrument : MSVOA_X
 ClientSampleId : VX0516MBL01



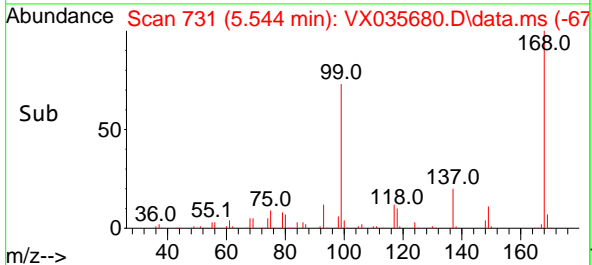
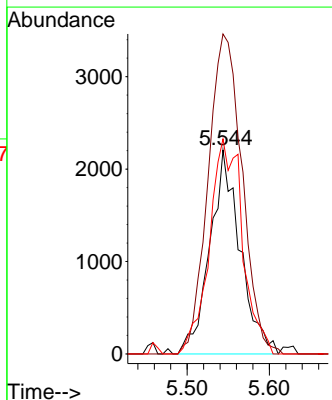
Tgt Ion	Resp	Lower	Upper
42	100		
72	25.5	34.5	51.7#
71	0.0	32.1	48.1#

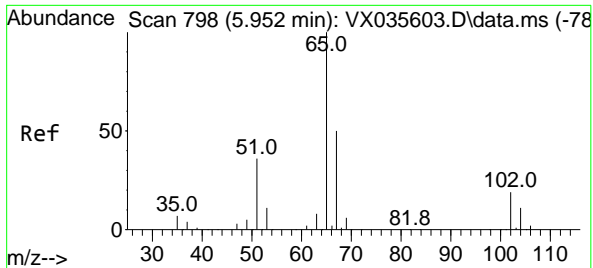


#31
 Cyclohexane
 Concen: 1.276 ug/l
 RT: 5.544 min Scan# 731
 Delta R.T. 0.073 min
 Lab File: VX035680.D
 Acq: 16 May 2023 10:33



Tgt Ion	Resp	Lower	Upper
56	100		
69	156.9	23.7	35.5#
84	105.4	68.5	102.7#

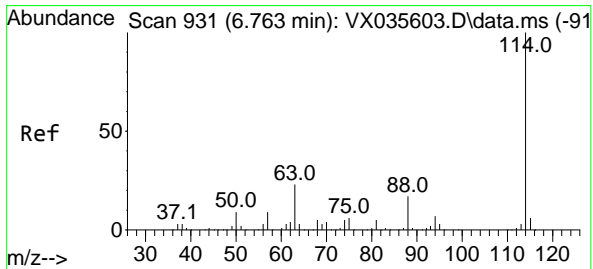
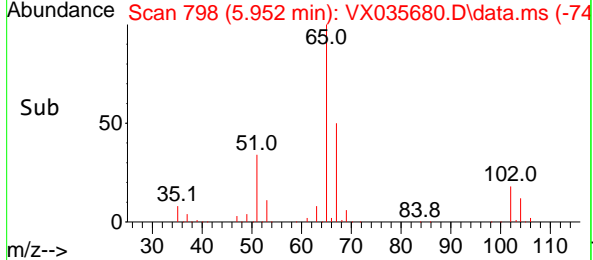
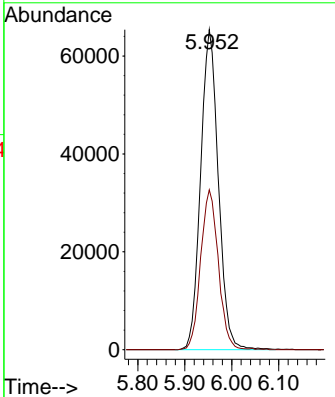
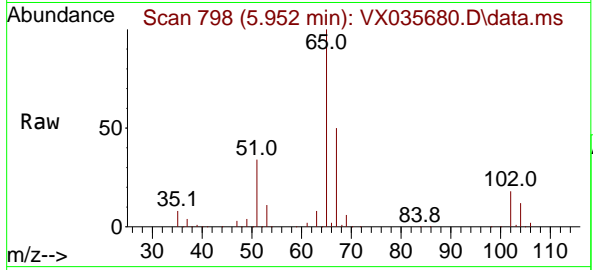




#33
 1,2-Dichloroethane-d4
 Concen: 48.799 ug/l
 RT: 5.952 min Scan# 798
 Delta R.T. 0.000 min
 Lab File: VX035680.D
 Acq: 16 May 2023 10:33

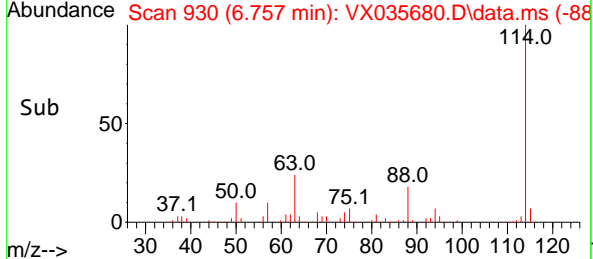
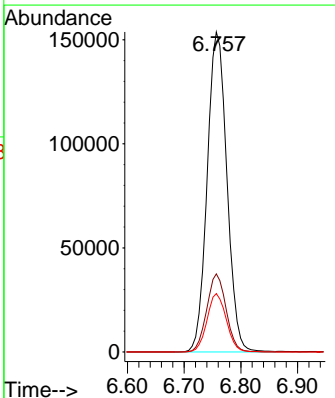
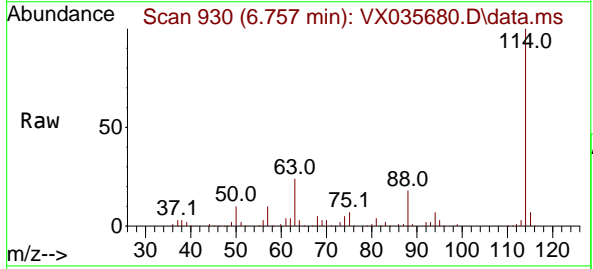
Instrument : MSVOA_X
 ClientSampleId : VX0516MBL01

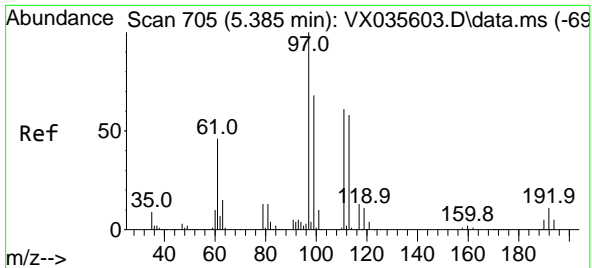
Tgt Ion: 65 Resp: 170875
 Ion Ratio Lower Upper
 65 100
 67 49.7 0.0 104.0



#34
 1,4-Difluorobenzene
 Concen: 50.000 ug/l
 RT: 6.757 min Scan# 930
 Delta R.T. -0.006 min
 Lab File: VX035680.D
 Acq: 16 May 2023 10:33

Tgt Ion:114 Resp: 370565
 Ion Ratio Lower Upper
 114 100
 63 24.4 0.0 42.2
 88 18.2 0.0 33.2

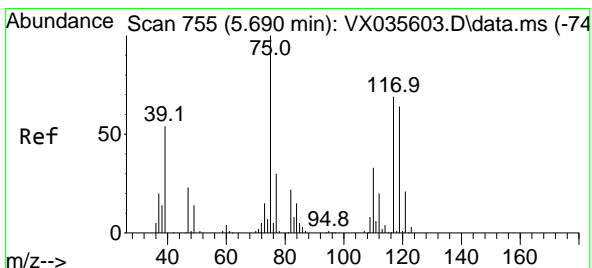
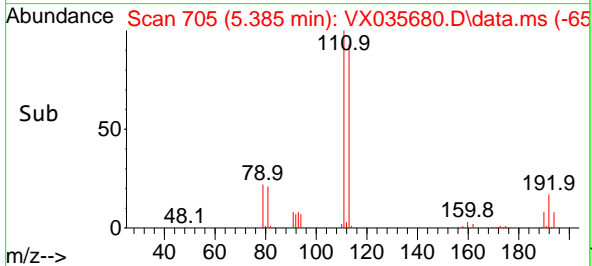
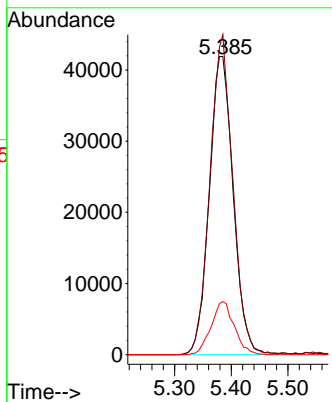
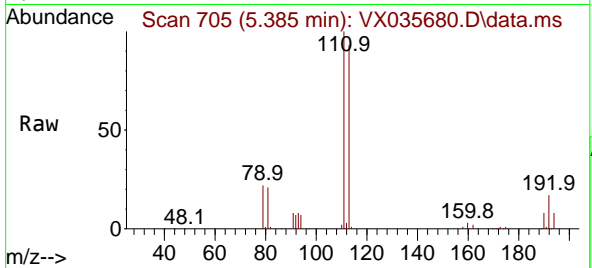




#35
 Dibromofluoromethane
 Concen: 49.148 ug/l
 RT: 5.385 min Scan# 705
 Delta R.T. 0.000 min
 Lab File: VX035680.D
 Acq: 16 May 2023 10:33

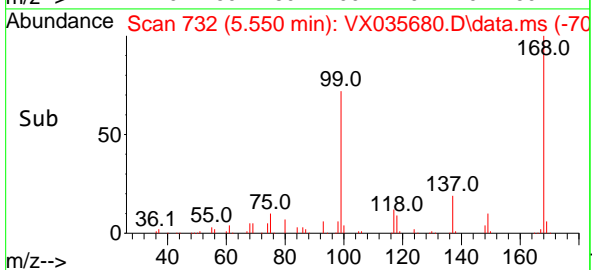
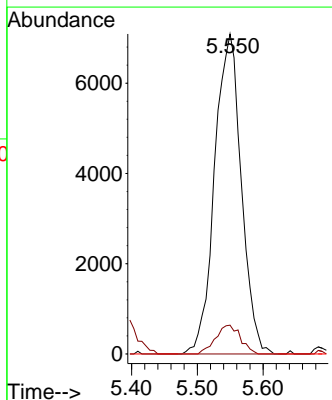
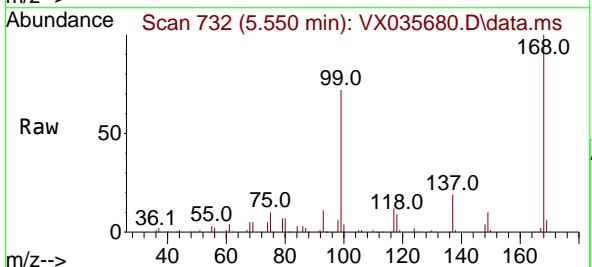
Instrument : MSVOA_X
 ClientSampleId : VX0516MBL01

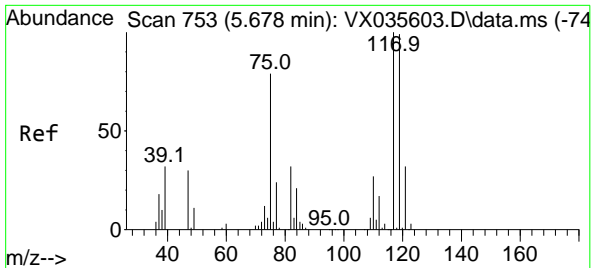
Tgt Ion	Resp	Lower	Upper
113	100		
111	102.5	83.7	125.5
192	17.3	15.4	23.2



#36
 1,1-Dichloropropene
 Concen: 5.069 ug/l
 RT: 5.550 min Scan# 732
 Delta R.T. -0.140 min
 Lab File: VX035680.D
 Acq: 16 May 2023 10:33

Tgt Ion	Resp	Lower	Upper
75	100		
110	8.4	17.5	52.5#
77	0.0	24.3	36.5#

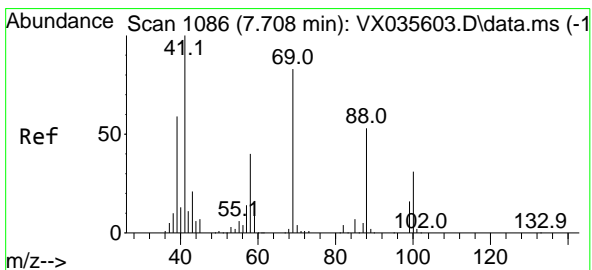
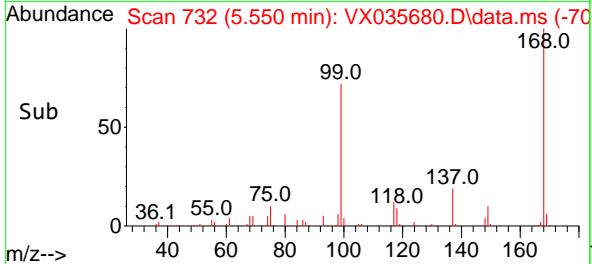
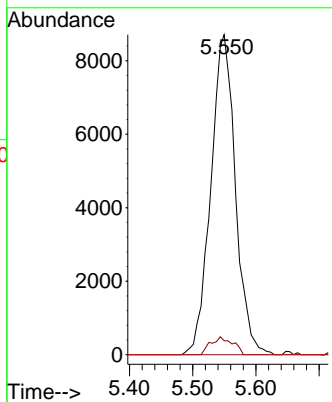
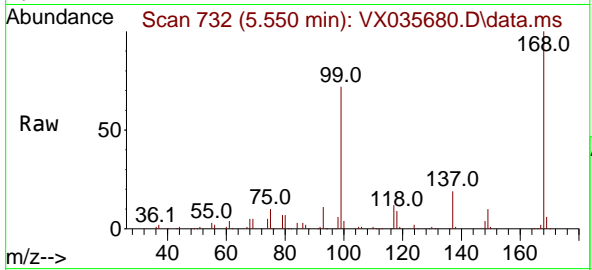




#38
 Carbon Tetrachloride
 Concen: 6.291 ug/l
 RT: 5.550 min Scan# 71
 Delta R.T. -0.128 min
 Lab File: VX035680.D
 Acq: 16 May 2023 10:33

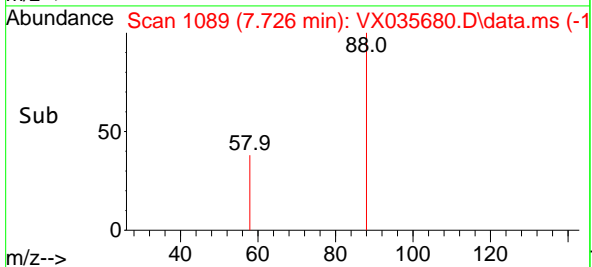
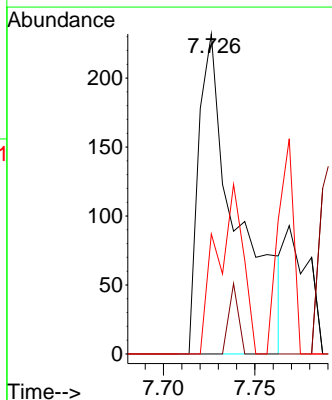
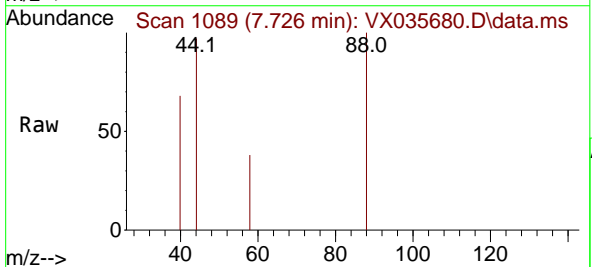
Instrument : MSVOA_X
 ClientSampleId : VX0516MBL01

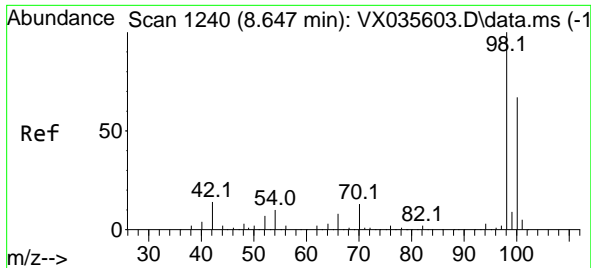
Tgt Ion	Resp	Lower	Upper
117	100		
119	4.3	76.6	114.8#
121	0.0	23.8	35.6#



#49
 1,4-Dioxane
 Concen: 6.341 ug/l
 RT: 7.726 min Scan# 1089
 Delta R.T. 0.018 min
 Lab File: VX035680.D
 Acq: 16 May 2023 10:33

Tgt Ion	Resp	Lower	Upper
88	100		
43	5.6	27.7	41.5#
58	36.1	56.8	85.2#





#50
 Toluene-d8
 Concen: 49.227 ug/l
 RT: 8.647 min Scan# 11
 Delta R.T. -0.000 min
 Lab File: VX035680.D
 Acq: 16 May 2023 10:33

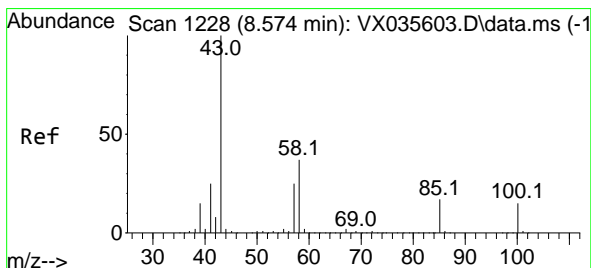
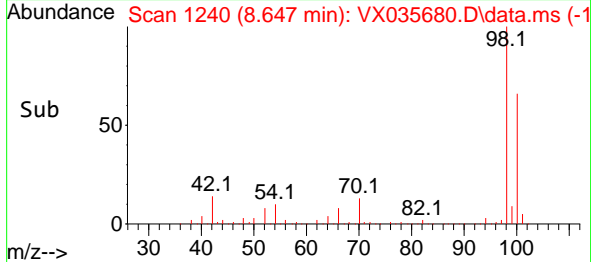
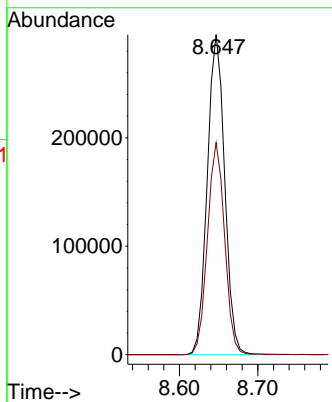
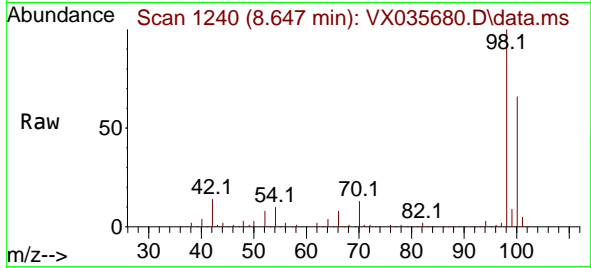
Instrument :

MSVOA_X

ClientSampleId :

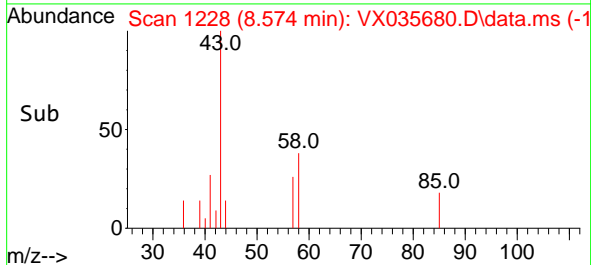
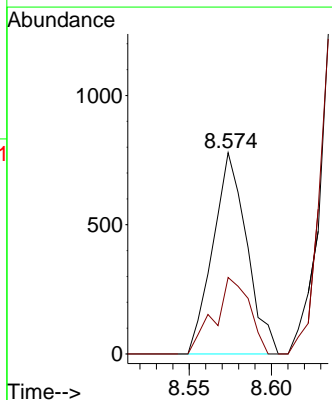
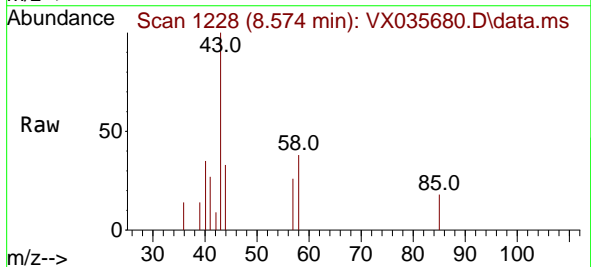
VX0516MBL01

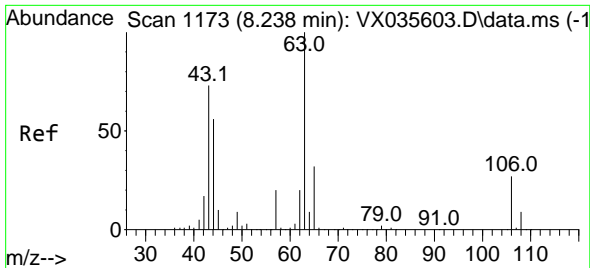
Tgt Ion: 98 Resp: 454479
 Ion Ratio Lower Upper
 98 100
 100 65.4 52.5 78.7



#51
 4-Methyl-2-Pentanone
 Concen: 0.270 ug/l
 RT: 8.574 min Scan# 1228
 Delta R.T. -0.000 min
 Lab File: VX035680.D
 Acq: 16 May 2023 10:33

Tgt Ion: 43 Resp: 1115
 Ion Ratio Lower Upper
 43 100
 58 39.2 30.6 46.0

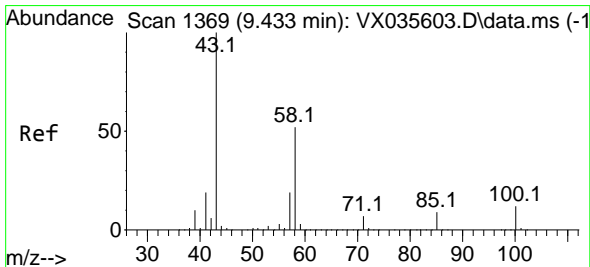
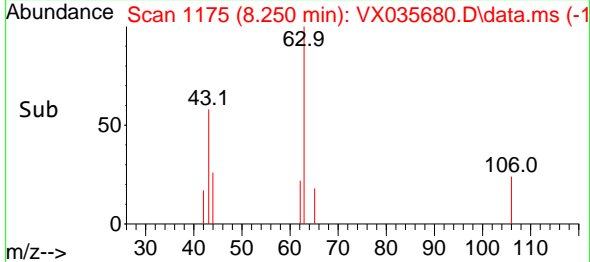
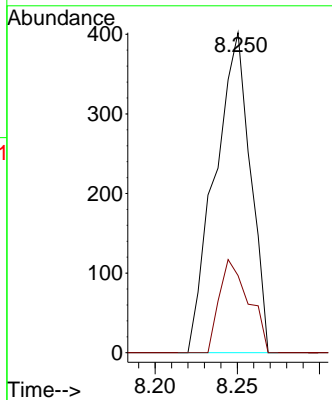
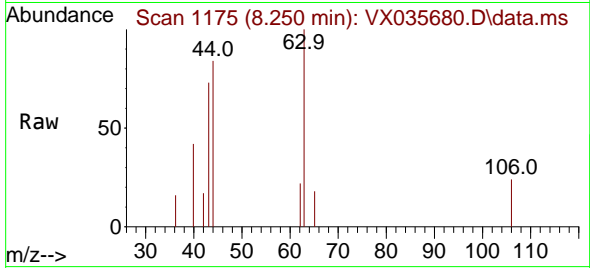




#58
 2-Chloroethyl Vinyl ether
 Concen: 0.268 ug/l
 RT: 8.250 min Scan# 1175
 Delta R.T. 0.012 min
 Lab File: VX035680.D
 Acq: 16 May 2023 10:33

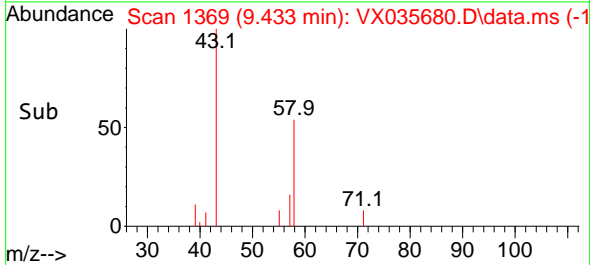
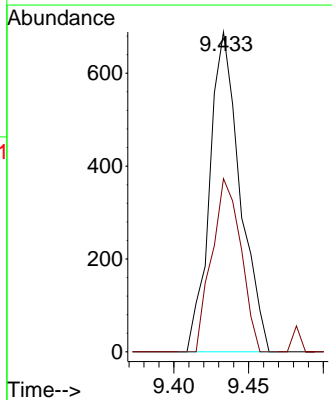
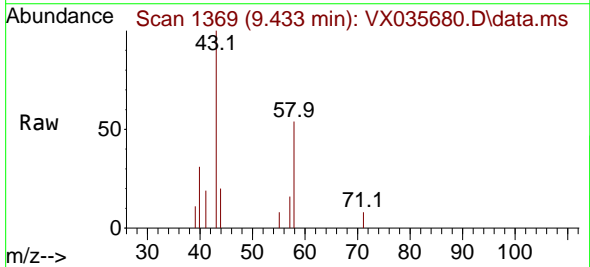
Instrument : MSVOA_X
 ClientSampleId : VX0516MBL01

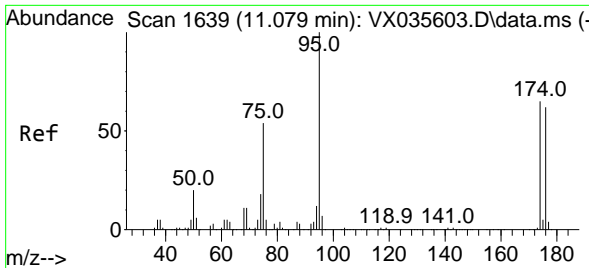
Tgt Ion: 63 Resp: 604
 Ion Ratio Lower Upper
 63 100
 106 24.2 22.2 33.2



#59
 2-Hexanone
 Concen: 0.313 ug/l
 RT: 9.433 min Scan# 1369
 Delta R.T. 0.000 min
 Lab File: VX035680.D
 Acq: 16 May 2023 10:33

Tgt Ion: 43 Resp: 973
 Ion Ratio Lower Upper
 43 100
 58 51.6 26.3 78.9

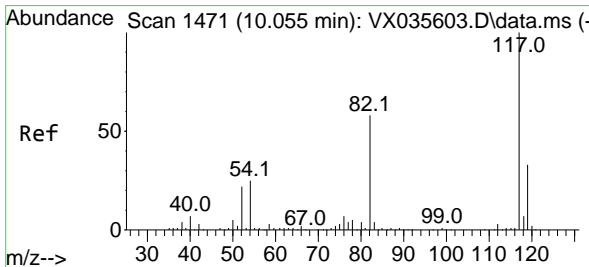
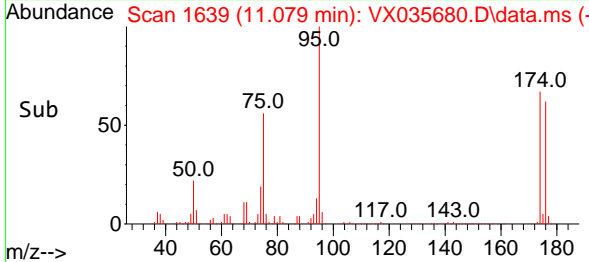
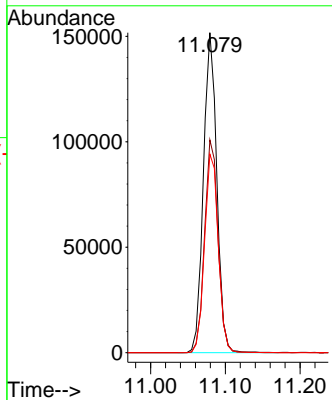
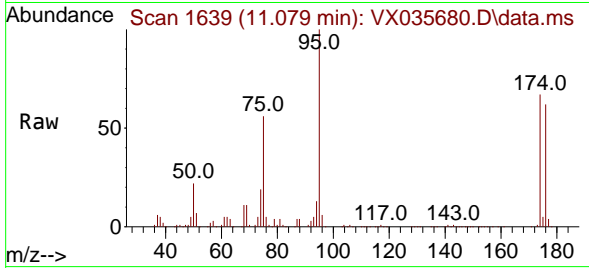




#62
 4-Bromofluorobenzene
 Concen: 50.669 ug/l
 RT: 11.079 min Scan# 1639
 Delta R.T. 0.000 min
 Lab File: VX035680.D
 Acq: 16 May 2023 10:33

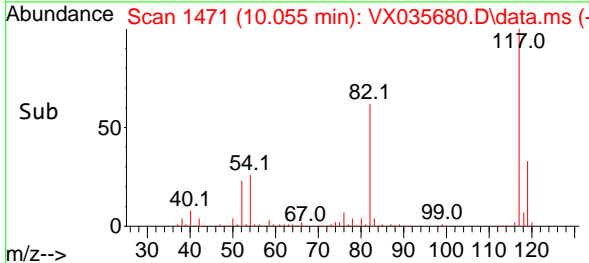
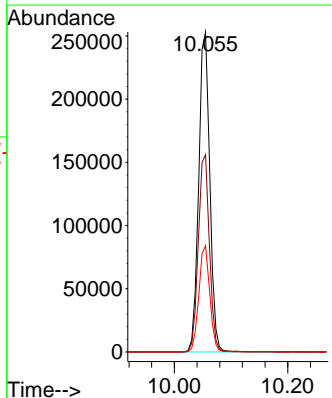
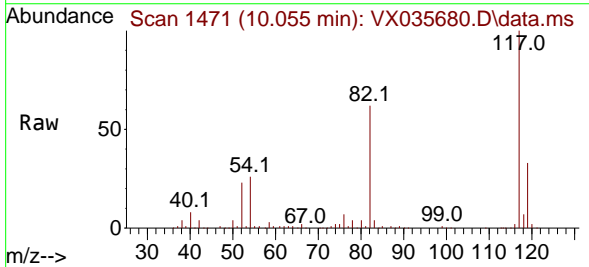
Instrument : MSVOA_X
 ClientSampleId : VX0516MBL01

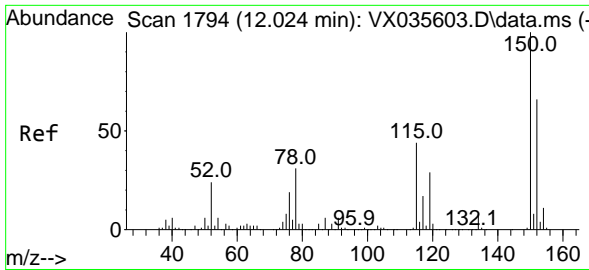
Tgt Ion: 95 Resp: 188350
 Ion Ratio Lower Upper
 95 100
 174 67.0 0.0 147.4
 176 63.7 0.0 140.6



#63
 Chlorobenzene-d5
 Concen: 50.000 ug/l
 RT: 10.055 min Scan# 1471
 Delta R.T. 0.000 min
 Lab File: VX035680.D
 Acq: 16 May 2023 10:33

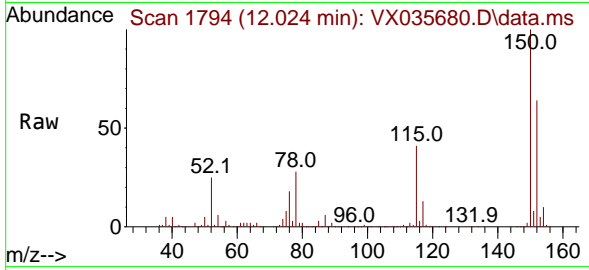
Tgt Ion: 117 Resp: 342681
 Ion Ratio Lower Upper
 117 100
 82 61.7 45.0 67.4
 119 33.2 26.0 39.0



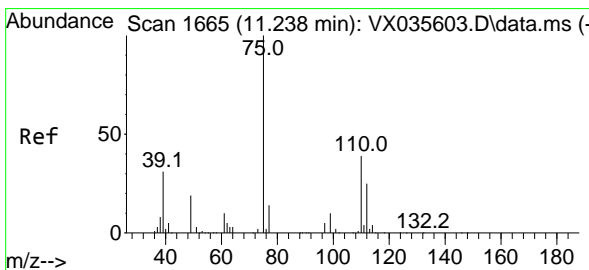
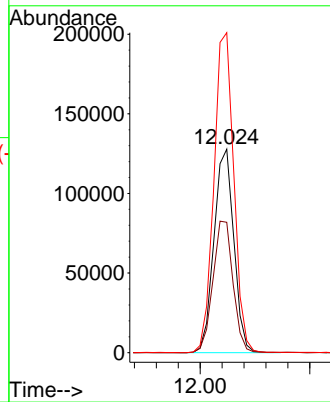
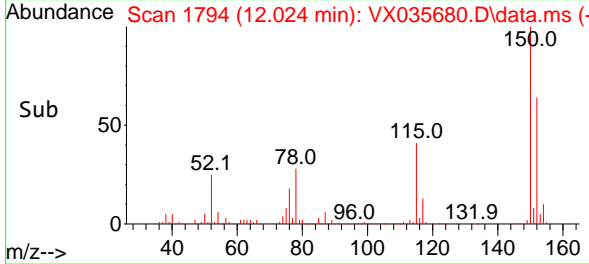


#72
 1,4-Dichlorobenzene-d4
 Concen: 50.000 ug/l
 RT: 12.024 min Scan# 1
 Delta R.T. 0.000 min
 Lab File: VX035680.D
 Acq: 16 May 2023 10:33

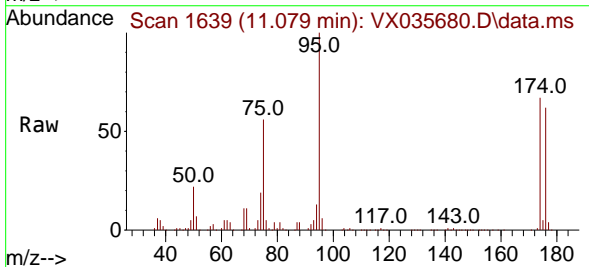
Instrument :
 MSVOA_X
 ClientSampleId :
 VX0516MBL01



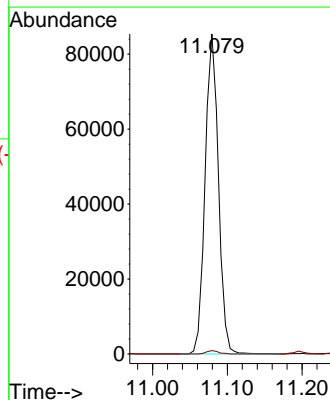
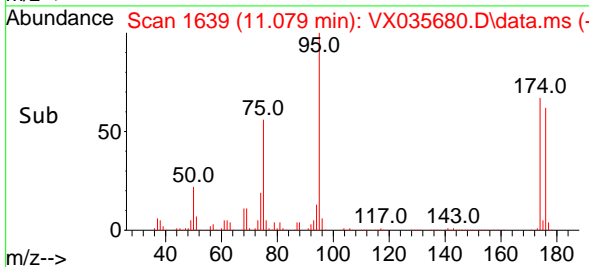
Tgt Ion:152 Resp: 161104
 Ion Ratio Lower Upper
 152 100
 115 65.4 45.0 135.0
 150 157.8 0.0 352.4

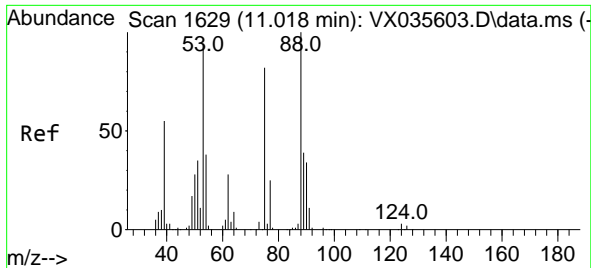


#76
 1,2,3-Trichloropropane
 Concen: 26.753 ug/l
 RT: 11.079 min Scan# 1639
 Delta R.T. -0.159 min
 Lab File: VX035680.D
 Acq: 16 May 2023 10:33



Tgt Ion: 75 Resp: 105424
 Ion Ratio Lower Upper
 75 100
 77 1.0 21.6 64.8#

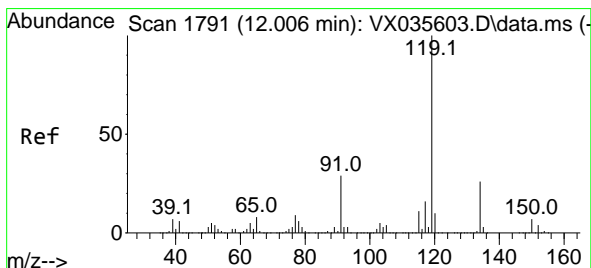
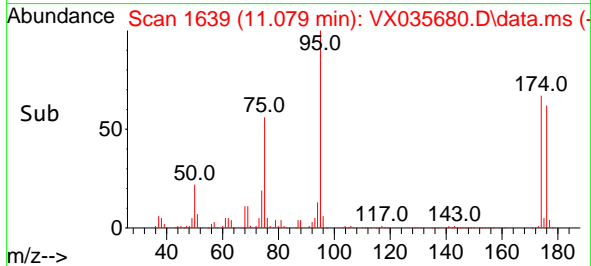
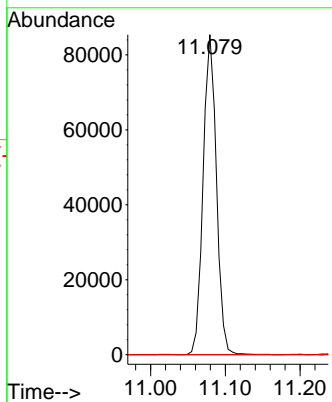
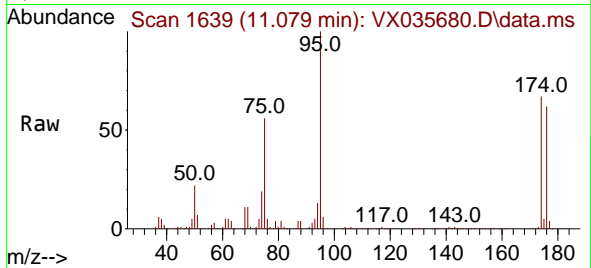




#81
 trans-1,4-Dichloro-2-butene
 Concen: 86.221 ug/l
 RT: 11.079 min Scan# 1639
 Delta R.T. 0.061 min
 Lab File: VX035680.D
 Acq: 16 May 2023 10:33

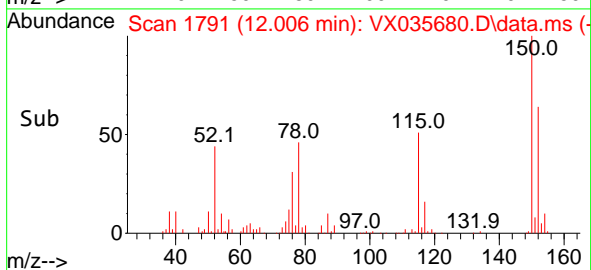
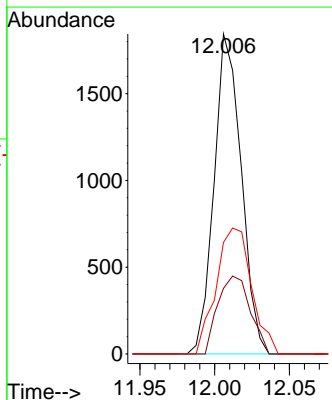
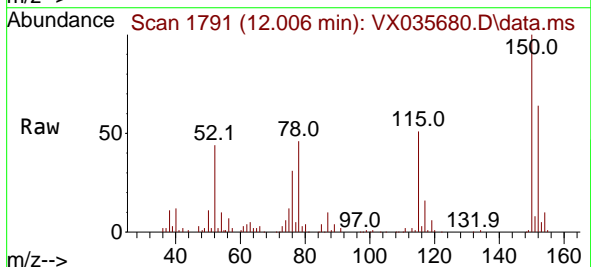
Instrument : MSVOA_X
 ClientSampleId : VX0516MBL01

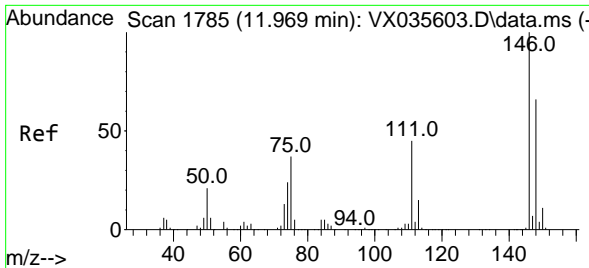
Tgt Ion: 75 Resp: 105424
 Ion Ratio Lower Upper
 75 100
 53 0.0 82.6 124.0#
 89 0.0 36.9 55.3#



#86
 p-Isopropyltoluene
 Concen: 0.201 ug/l
 RT: 12.006 min Scan# 1791
 Delta R.T. -0.000 min
 Lab File: VX035680.D
 Acq: 16 May 2023 10:33

Tgt Ion:119 Resp: 2329
 Ion Ratio Lower Upper
 119 100
 134 29.0 13.2 39.5
 91 51.4 12.9 38.7#



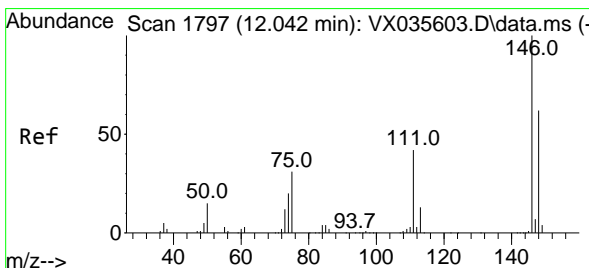
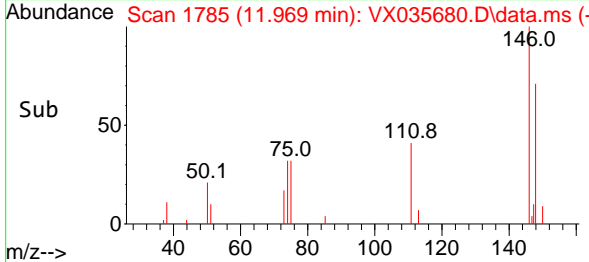
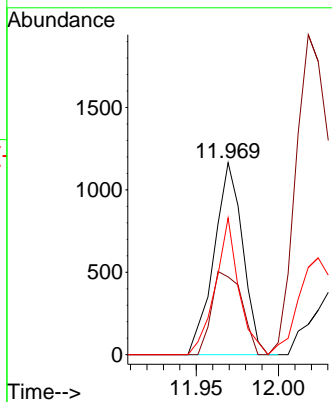
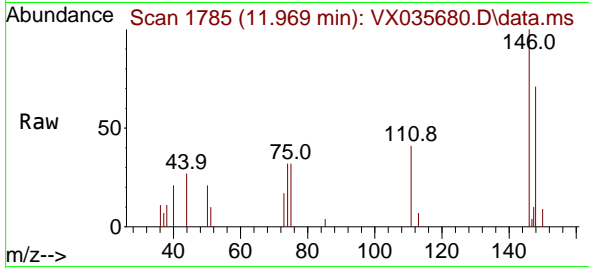


#87
 1,3-Dichlorobenzene
 Concen: 0.242 ug/l
 RT: 11.969 min Scan# 1785
 Delta R.T. 0.000 min
 Lab File: VX035680.D
 Acq: 16 May 2023 10:33

Instrument :
 MSVOA_X
 ClientSampleId :
 VX0516MBL01

Tgt Ion:146 Resp: 1414

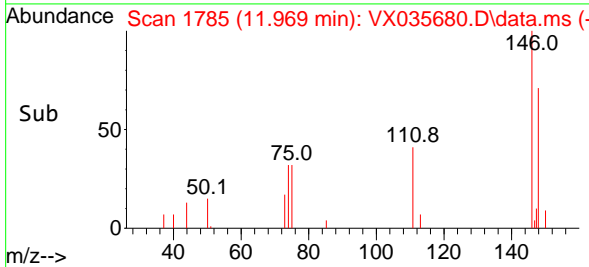
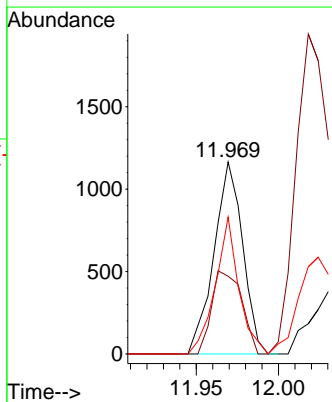
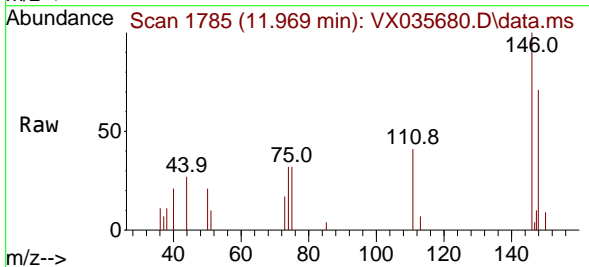
Ion	Ratio	Lower	Upper
146	100		
111	45.2	20.9	62.8
148	58.5	31.6	95.0

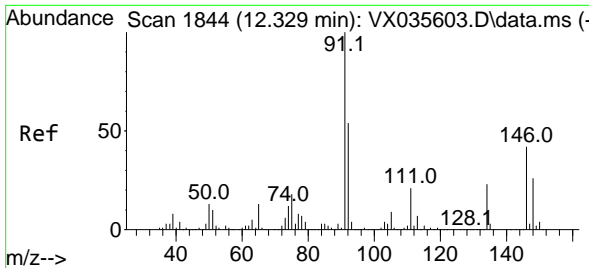


#88
 1,4-Dichlorobenzene
 Concen: 0.239 ug/l
 RT: 11.969 min Scan# 1785
 Delta R.T. -0.073 min
 Lab File: VX035680.D
 Acq: 16 May 2023 10:33

Tgt Ion:146 Resp: 1414

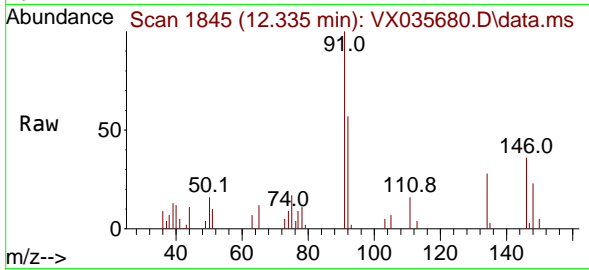
Ion	Ratio	Lower	Upper
146	100		
111	45.2	20.6	61.9
148	58.5	31.8	95.4





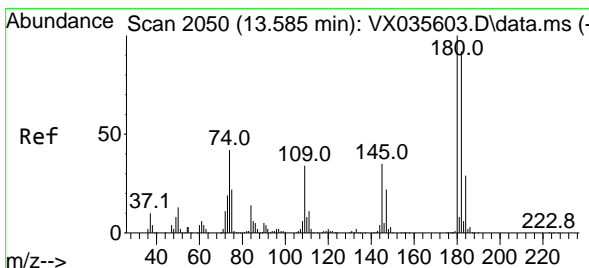
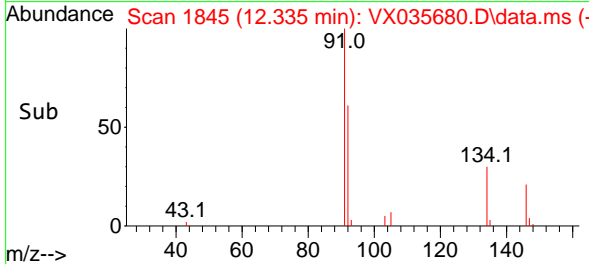
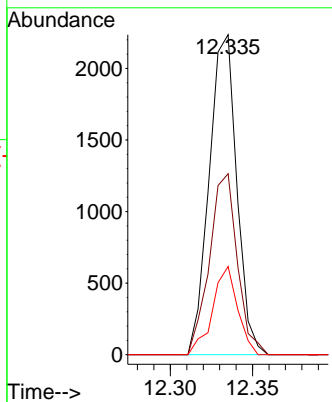
#89
 n-Butylbenzene
 Concen: 0.248 ug/l
 RT: 12.335 min Scan# 1845
 Delta R.T. 0.006 min
 Lab File: VX035680.D
 Acq: 16 May 2023 10:33

Instrument : MSVOA_X
 ClientSampleId : VX0516MBL01

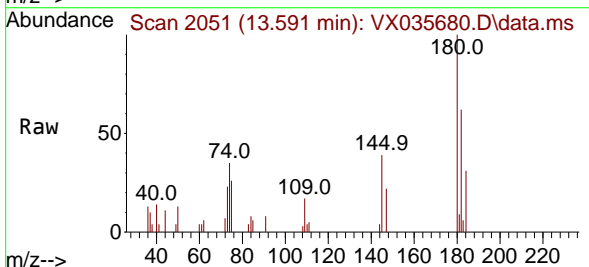


Tgt Ion: 91 Resp: 2613

Ion	Ratio	Lower	Upper
91	100		
92	57.3	27.7	83.0
134	25.1	13.0	38.9

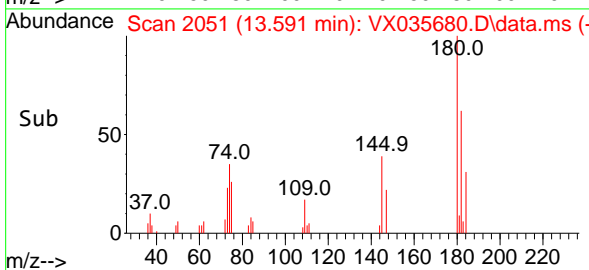
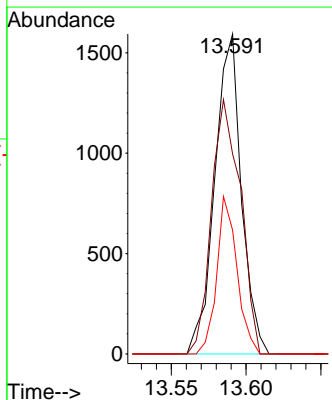


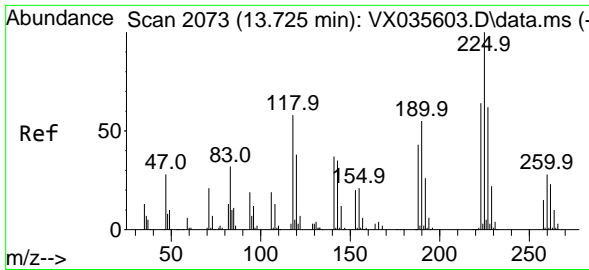
#93
 1,2,4-Trichlorobenzene
 Concen: 0.571 ug/l
 RT: 13.591 min Scan# 2051
 Delta R.T. 0.006 min
 Lab File: VX035680.D
 Acq: 16 May 2023 10:33



Tgt Ion: 180 Resp: 1970

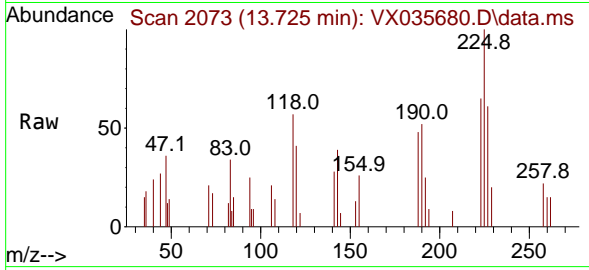
Ion	Ratio	Lower	Upper
180	100		
182	86.5	47.0	141.0
145	37.4	15.9	47.7





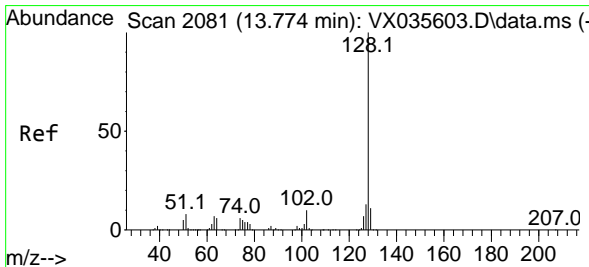
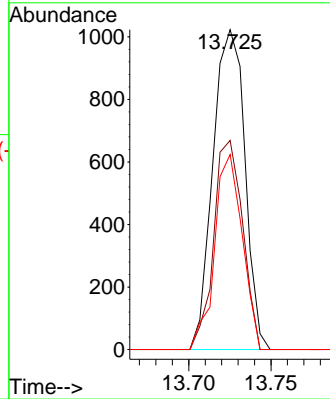
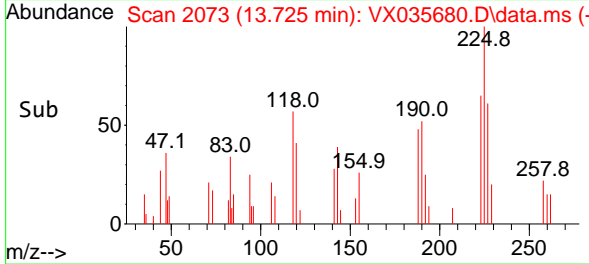
#94
 Hexachlorobutadiene
 Concen: 1.009 ug/l
 RT: 13.725 min Scan# 2073
 Delta R.T. 0.000 min
 Lab File: VX035680.D
 Acq: 16 May 2023 10:33

Instrument : MSVOA_X
 ClientSampleId : VX0516MBL01

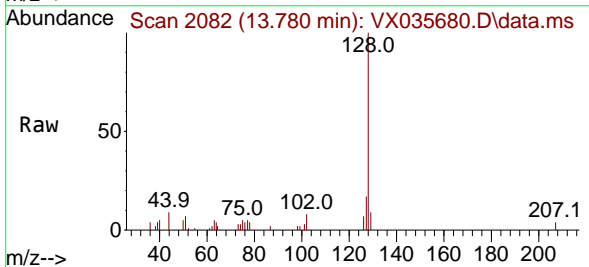


Tgt Ion: 225 Resp: 1382

Ion	Ratio	Lower	Upper
225	100		
223	59.1	32.1	96.5
227	52.8	31.8	95.4

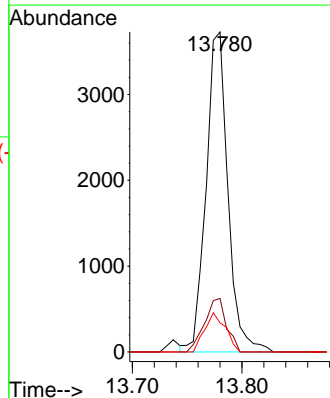
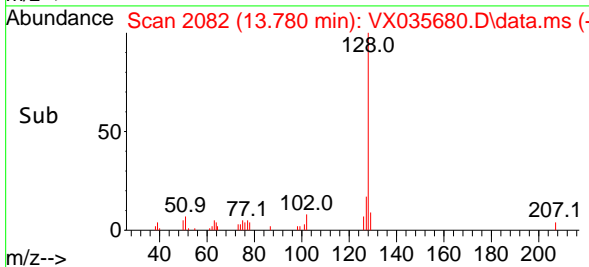


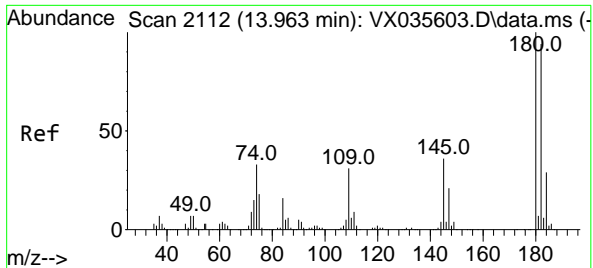
#95
 Naphthalene
 Concen: 0.436 ug/l
 RT: 13.780 min Scan# 2082
 Delta R.T. 0.006 min
 Lab File: VX035680.D
 Acq: 16 May 2023 10:33



Tgt Ion: 128 Resp: 5154

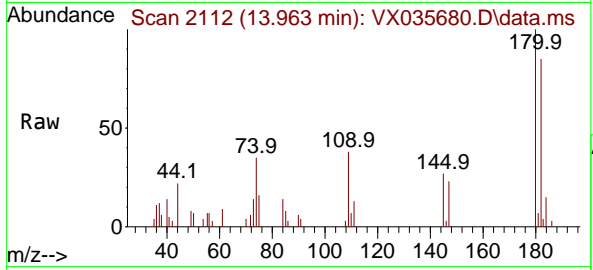
Ion	Ratio	Lower	Upper
128	100		
127	16.8	10.2	15.4#
129	11.7	8.6	13.0





#96
 1,2,3-Trichlorobenzene
 Concen: 0.584 ug/l
 RT: 13.963 min Scan# 21
 Delta R.T. -0.000 min
 Lab File: VX035680.D
 Acq: 16 May 2023 10:33

Instrument :
 MSVOA_X
 ClientSampleId :
 VX0516MBL01



Tgt Ion:180 Resp: 1983

Ion	Ratio	Lower	Upper
180	100		
182	92.6	48.0	144.2
145	32.3	17.7	53.1

