

Data Path : Z:\voasrv\HPCHEM1\MSVOA_X\Data\VX051623\
 Data File : VX035687.D
 Acq On : 16 May 2023 13:43
 Operator : JC/MD
 Sample : 02643-10DL 10X
 Misc : 5.0mL/MSVOA_X/WATER
 ALS Vial : 10 Sample Multiplier: 1

Instrument :
 MSVOA_X
 ClientSampleId :
 FSND-PRO-07-99-05032023DL

Quant Time: May 17 05:29:33 2023
 Quant Method : Z:\voasrv\HPCHEM1\MSVOA_X\Method\82X051123W.M
 Quant Title : SW846 8260
 QLast Update : Thu May 11 13:57:54 2023
 Response via : Initial Calibration

Compound	R.T.	QIon	Response	Conc	Units	Dev(Min)

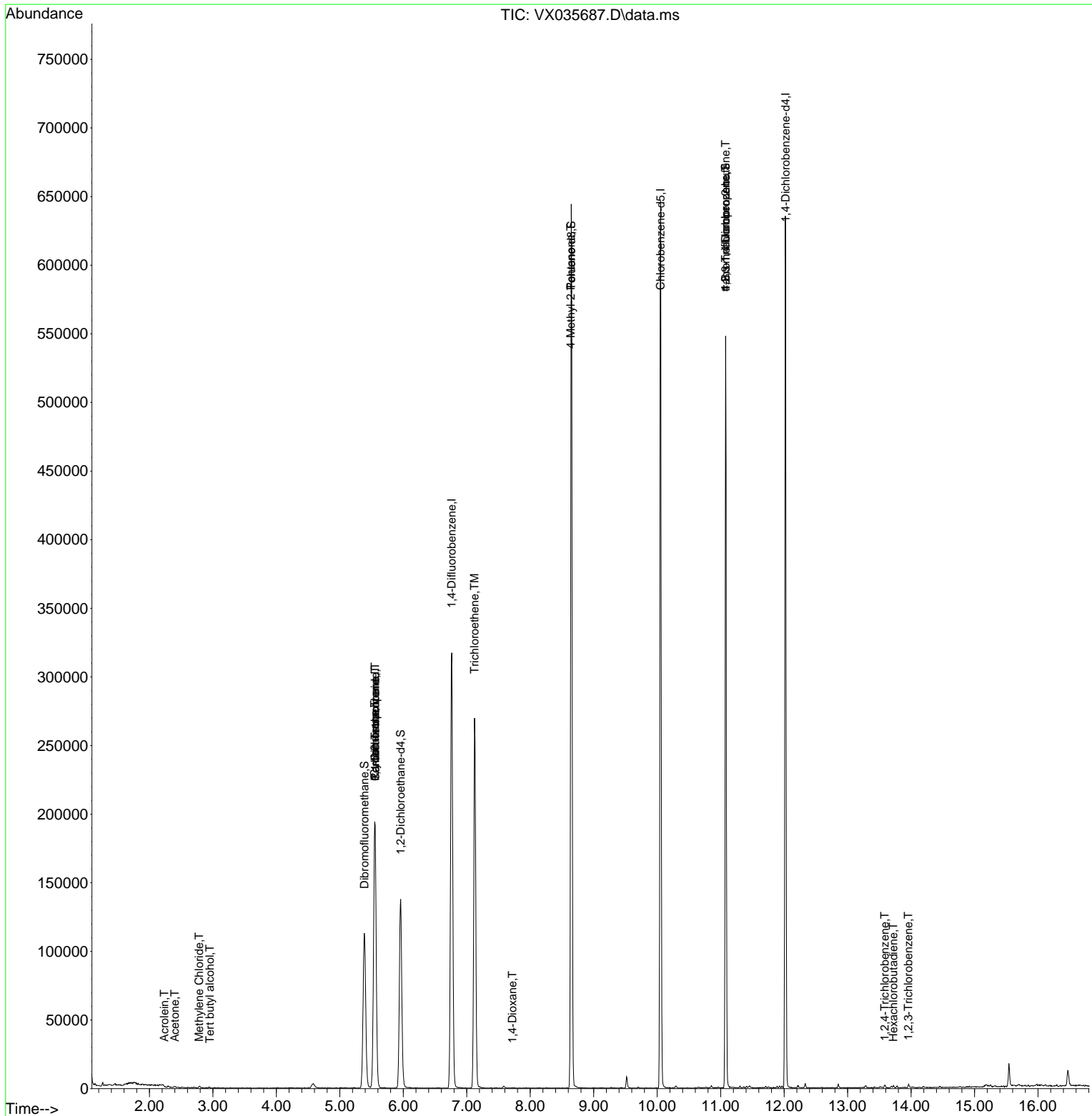
Internal Standards						
1) Pentafluorobenzene	5.556	168	167354	50.000	ug/l	# 0.00
34) 1,4-Difluorobenzene	6.763	114	303668	50.000	ug/l	0.00
63) Chlorobenzene-d5	10.055	117	271575	50.000	ug/l	0.00
72) 1,4-Dichlorobenzene-d4	12.024	152	119718	50.000	ug/l	0.00
System Monitoring Compounds						
33) 1,2-Dichloroethane-d4	5.958	65	140918	48.267	ug/l	0.00
Spiked Amount	50.000	Range 78 - 117	Recovery	=	96.540%	
35) Dibromofluoromethane	5.385	113	97830	47.770	ug/l	0.00
Spiked Amount	50.000	Range 75 - 124	Recovery	=	95.540%	
50) Toluene-d8	8.647	98	365819	48.353	ug/l	0.00
Spiked Amount	50.000	Range 92 - 112	Recovery	=	96.700%	
62) 4-Bromofluorobenzene	11.079	95	145755	47.848	ug/l	0.00
Spiked Amount	50.000	Range 83 - 123	Recovery	=	95.700%	
Target Compounds						
						Qvalue
11) Tert butyl alcohol	2.953	59	390	0.757	ug/l	# 73
13) Acrolein	2.233	56	267	0.437	ug/l	# 32
16) Acetone	2.398	43	1138	0.907	ug/l	# 79
20) Methylene Chloride	2.782	84	669	0.294	ug/l	# 76
31) Cyclohexane	5.550	56	4724	1.281	ug/l	# 17
36) 1,1-Dichloropropene	5.556	75	16547	5.119	ug/l	# 51
38) Carbon Tetrachloride	5.556	117	19135	6.249	ug/l	# 15
44) Trichloroethene	7.123	130	96487	42.079	ug/l	91
49) 1,4-Dioxane	7.720	88	95	3.476	ug/l	# 11
51) 4-Methyl-2-Pentanone	8.641	43	2111	0.623	ug/l	# 1
76) 1,2,3-Trichloropropane	11.079	75	80724	27.566	ug/l	# 34
81) trans-1,4-Dichloro-2-b...	11.079	75	80724	88.843	ug/l	# 8
93) 1,2,4-Trichlorobenzene	13.585	180	546	0.213	ug/l	88
94) Hexachlorobutadiene	13.719	225	290	0.285	ug/l	84
96) 1,2,3-Trichlorobenzene	13.957	180	567	0.225	ug/l	93

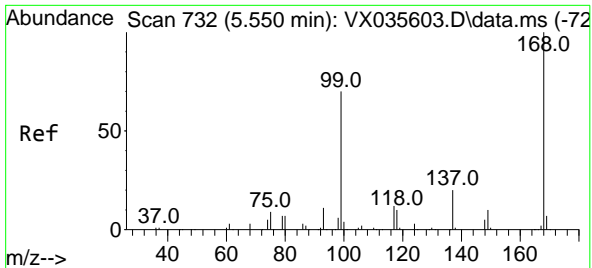
(#) = qualifier out of range (m) = manual integration (+) = signals summed

Data Path : Z:\voasrv\HPCHEM1\MSVOA_X\Data\VX051623\
 Data File : VX035687.D
 Acq On : 16 May 2023 13:43
 Operator : JC/MD
 Sample : 02643-10DL 10X
 Misc : 5.0mL/MSVOA_X/WATER
 ALS Vial : 10 Sample Multiplier: 1

Instrument :
 MSVOA_X
 ClientSampleId :
 FSND-PRO-07-99-05032023DL

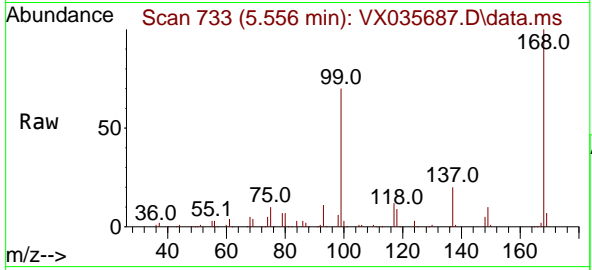
Quant Time: May 17 05:29:33 2023
 Quant Method : Z:\voasrv\HPCHEM1\MSVOA_X\Method\82X051123W.M
 Quant Title : SW846 8260
 QLast Update : Thu May 11 13:57:54 2023
 Response via : Initial Calibration



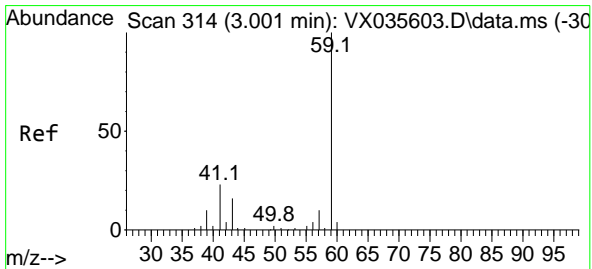
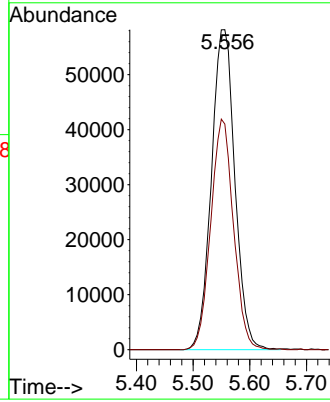
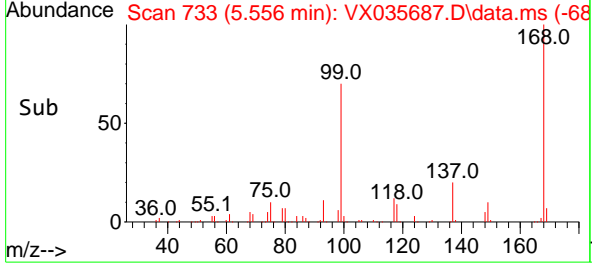


#1
 Pentafluorobenzene
 Concen: 50.000 ug/l
 RT: 5.556 min Scan# 71
 Delta R.T. 0.006 min
 Lab File: VX035687.D
 Acq: 16 May 2023 13:43

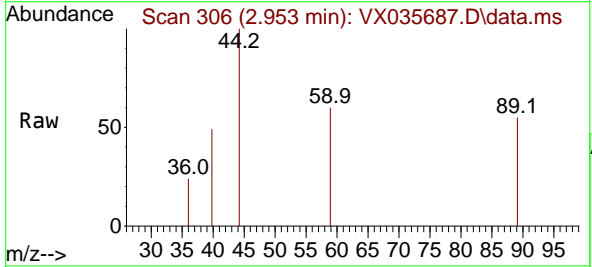
Instrument : MSVOA_X
 ClientSampleId : FSND-PRO-07-99-05032023DL



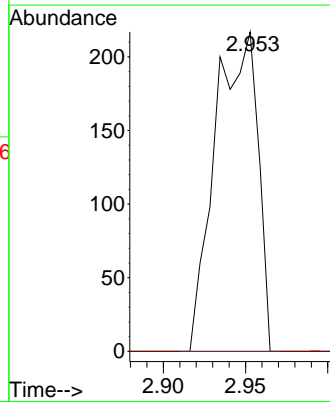
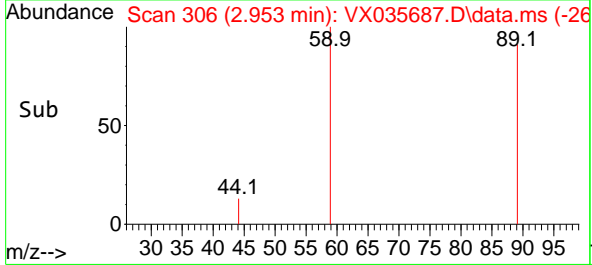
Tgt Ion:168 Resp: 167354
 Ion Ratio Lower Upper
 168 100
 99 70.5 45.7 68.5#

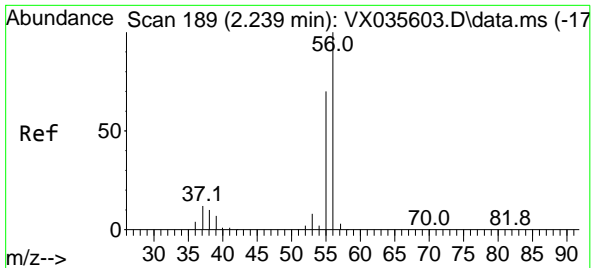


#11
 Tert butyl alcohol
 Concen: 0.757 ug/l
 RT: 2.953 min Scan# 306
 Delta R.T. -0.048 min
 Lab File: VX035687.D
 Acq: 16 May 2023 13:43



Tgt Ion: 59 Resp: 390
 Ion Ratio Lower Upper
 59 100
 57 0.0 8.1 12.1#

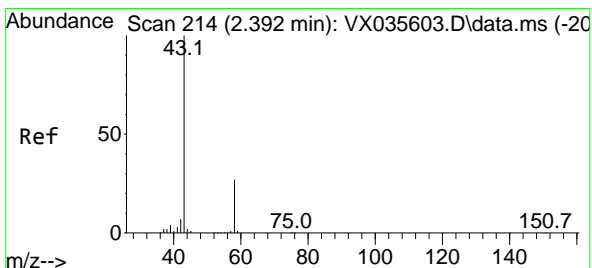
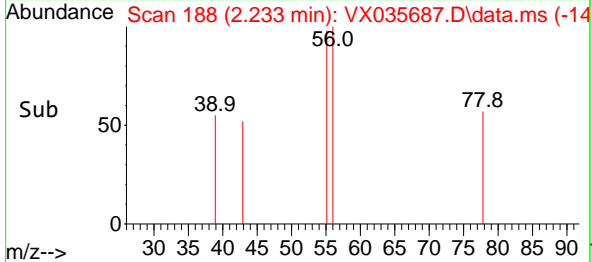
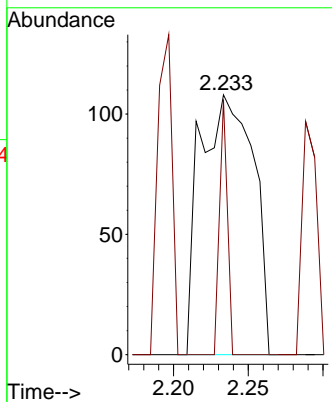
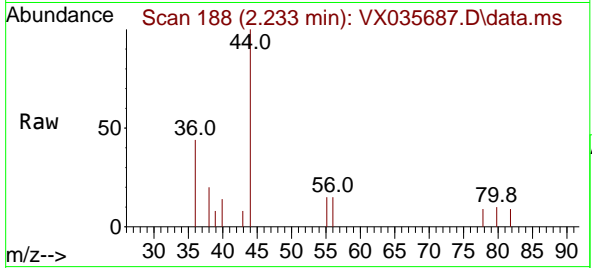




#13
 Acrolein
 Concen: 0.437 ug/l
 RT: 2.233 min Scan# 11
 Delta R.T. -0.006 min
 Lab File: VX035687.D
 Acq: 16 May 2023 13:43

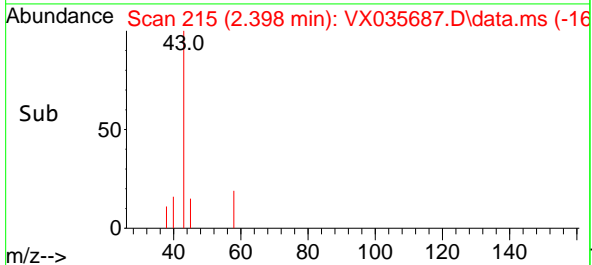
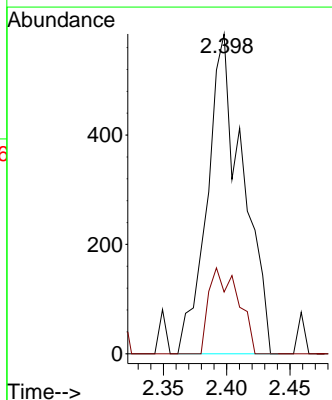
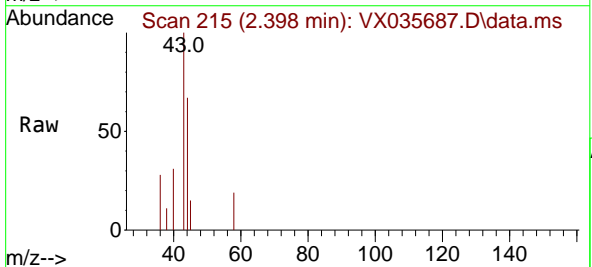
Instrument : MSVOA_X
 ClientSampleId : FSND-PRO-07-99-05032023DL

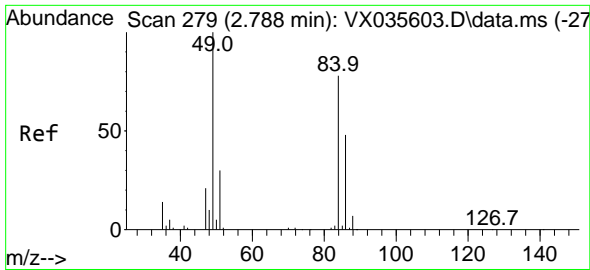
Tgt Ion: 56 Resp: 267
 Ion Ratio Lower Upper
 56 100
 55 14.6 56.6 85.0#



#16
 Acetone
 Concen: 0.907 ug/l
 RT: 2.398 min Scan# 215
 Delta R.T. 0.006 min
 Lab File: VX035687.D
 Acq: 16 May 2023 13:43

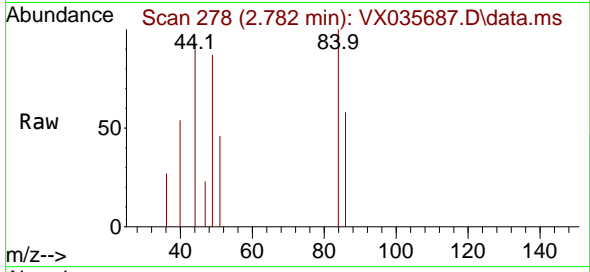
Tgt Ion: 43 Resp: 1138
 Ion Ratio Lower Upper
 43 100
 58 19.3 24.7 37.1#





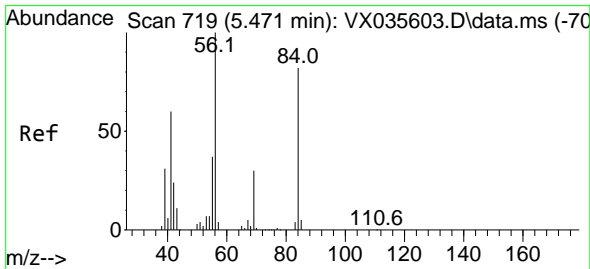
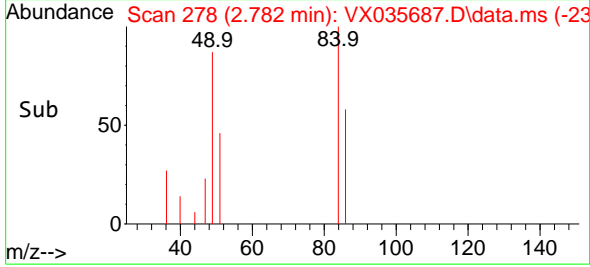
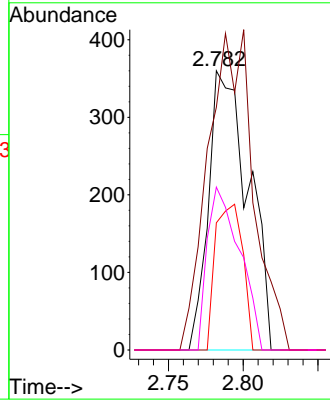
#20
 Methylene Chloride
 Concen: 0.294 ug/l
 RT: 2.782 min Scan# 21
 Delta R.T. -0.006 min
 Lab File: VX035687.D
 Acq: 16 May 2023 13:43

Instrument : MSVOA_X
 ClientSampleId : FSND-PRO-07-99-05032023DL

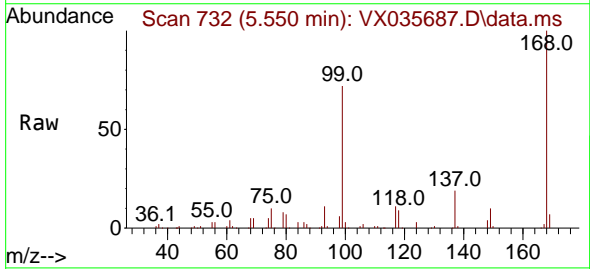


Tgt Ion: 84 Resp: 669

Ion	Ratio	Lower	Upper
84	100		
49	86.9	103.8	155.8#
51	45.6	31.8	47.8
86	58.3	51.4	77.2

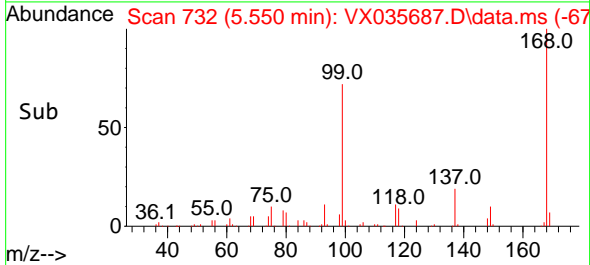
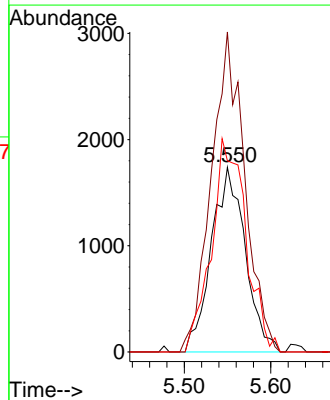


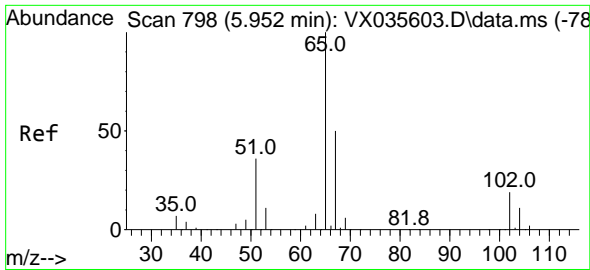
#31
 Cyclohexane
 Concen: 1.281 ug/l
 RT: 5.550 min Scan# 732
 Delta R.T. 0.079 min
 Lab File: VX035687.D
 Acq: 16 May 2023 13:43



Tgt Ion: 56 Resp: 4724

Ion	Ratio	Lower	Upper
56	100		
69	173.3	23.7	35.5#
84	103.5	68.5	102.7#

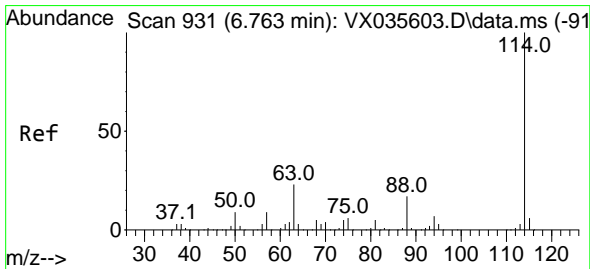
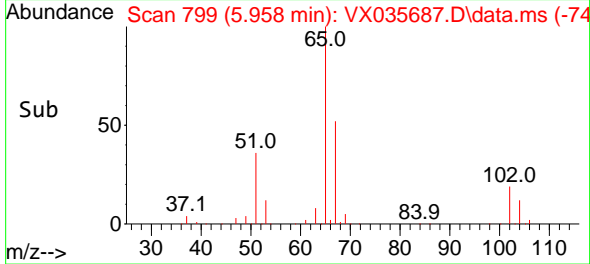
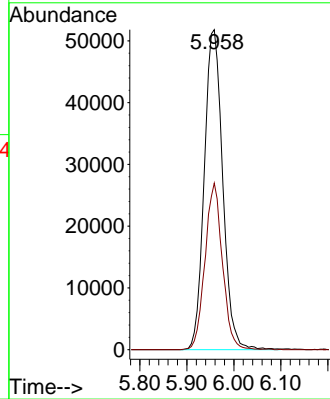
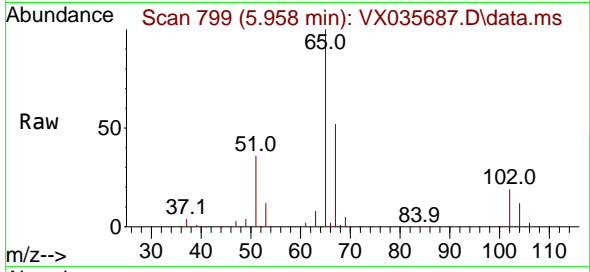




#33
 1,2-Dichloroethane-d4
 Concen: 48.267 ug/l
 RT: 5.958 min Scan# 799
 Delta R.T. 0.006 min
 Lab File: VX035687.D
 Acq: 16 May 2023 13:43

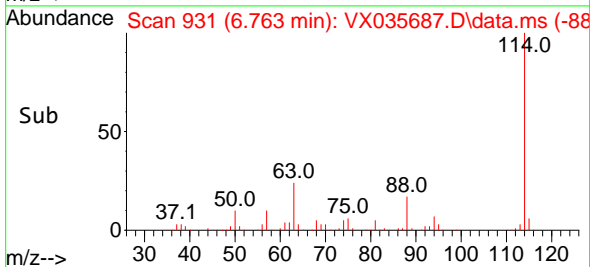
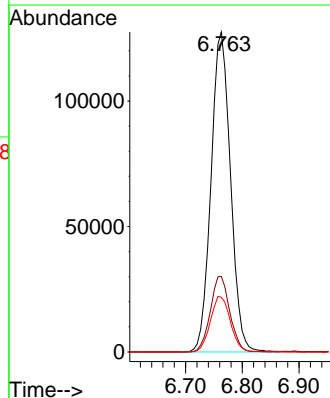
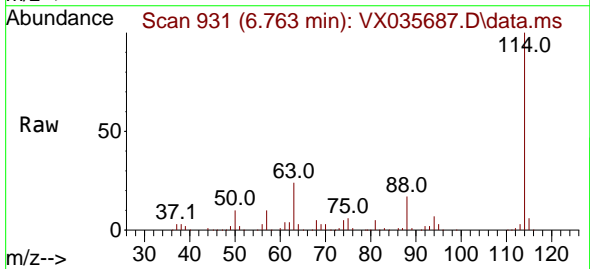
Instrument : MSVOA_X
 ClientSampleId : FSND-PRO-07-99-05032023DL

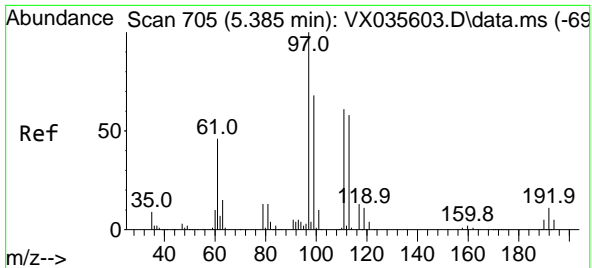
Tgt Ion: 65 Resp: 140918
 Ion Ratio Lower Upper
 65 100
 67 49.2 0.0 104.0



#34
 1,4-Difluorobenzene
 Concen: 50.000 ug/l
 RT: 6.763 min Scan# 931
 Delta R.T. 0.000 min
 Lab File: VX035687.D
 Acq: 16 May 2023 13:43

Tgt Ion:114 Resp: 303668
 Ion Ratio Lower Upper
 114 100
 63 23.6 0.0 42.2
 88 17.1 0.0 33.2

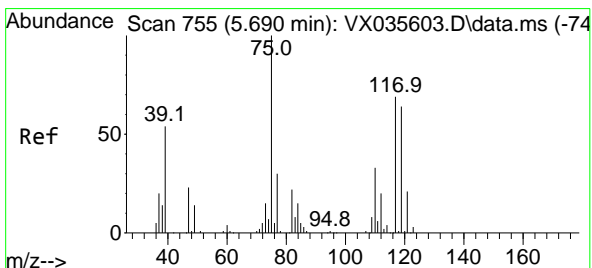
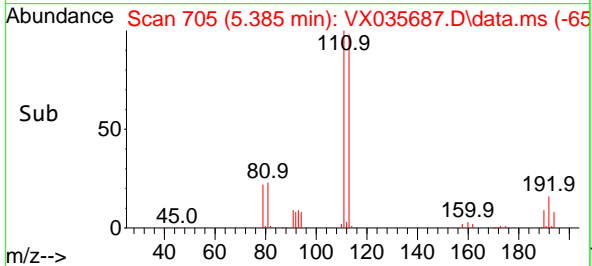
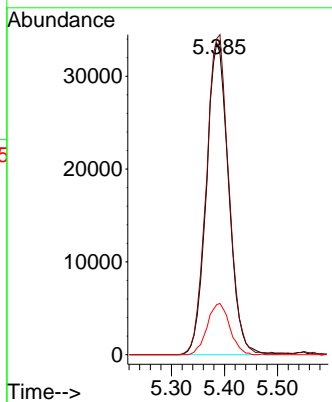
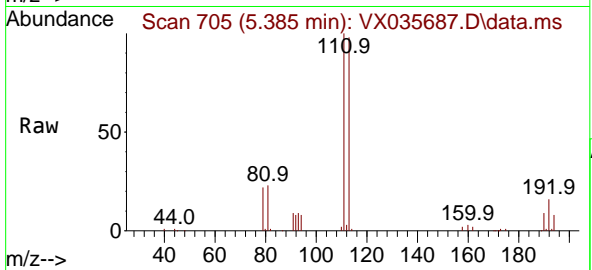




#35
 Dibromofluoromethane
 Concen: 47.770 ug/l
 RT: 5.385 min Scan# 705
 Delta R.T. 0.000 min
 Lab File: VX035687.D
 Acq: 16 May 2023 13:43

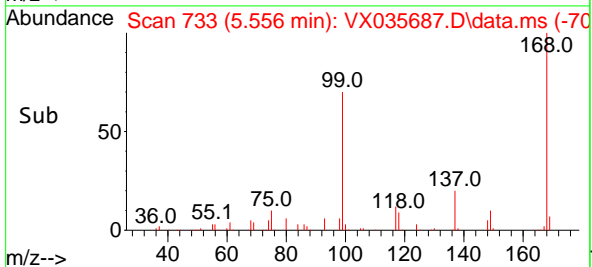
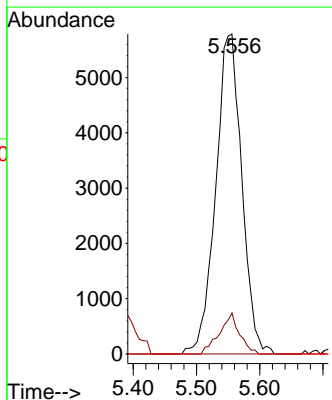
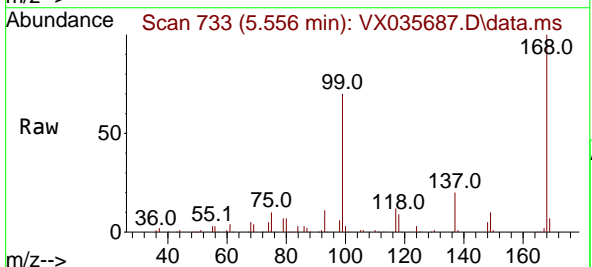
Instrument : MSVOA_X
 ClientSampleId : FSND-PRO-07-99-05032023DL

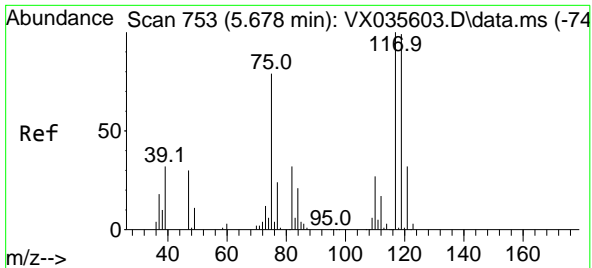
Tgt Ion:113 Resp: 97830
 Ion Ratio Lower Upper
 113 100
 111 103.5 83.7 125.5
 192 16.6 15.4 23.2



#36
 1,1-Dichloropropene
 Concen: 5.119 ug/l
 RT: 5.556 min Scan# 733
 Delta R.T. -0.134 min
 Lab File: VX035687.D
 Acq: 16 May 2023 13:43

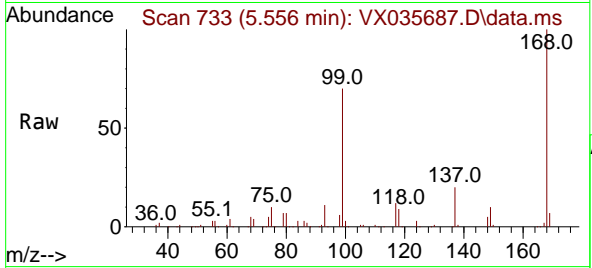
Tgt Ion: 75 Resp: 16547
 Ion Ratio Lower Upper
 75 100
 110 9.8 17.5 52.5#
 77 0.0 24.3 36.5#



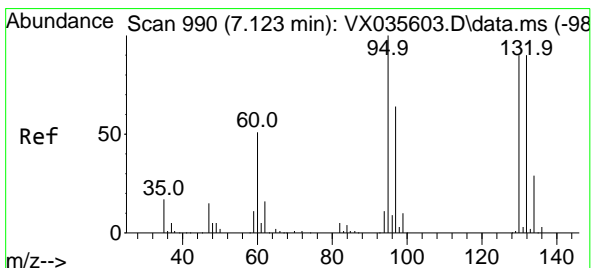
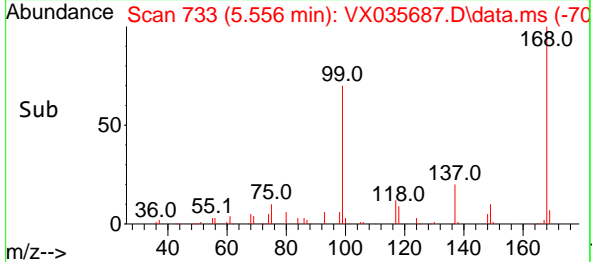
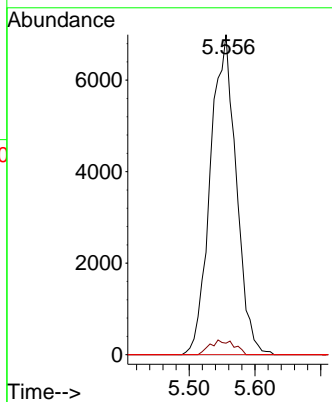


#38
 Carbon Tetrachloride
 Concen: 6.249 ug/l
 RT: 5.556 min Scan# 711
 Delta R.T. -0.122 min
 Lab File: VX035687.D
 Acq: 16 May 2023 13:43

Instrument : MSVOA_X
 ClientSampleId : FSND-PRO-07-99-05032023DL

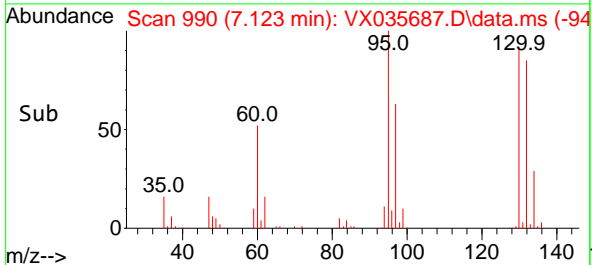
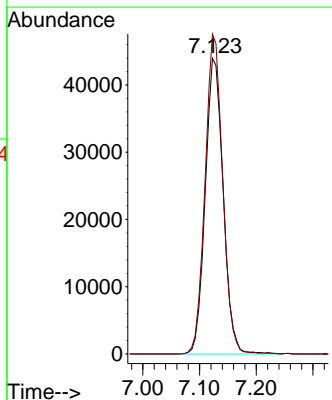
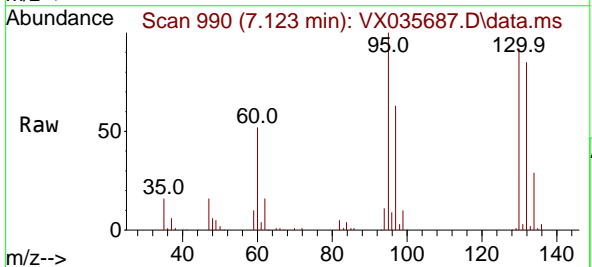


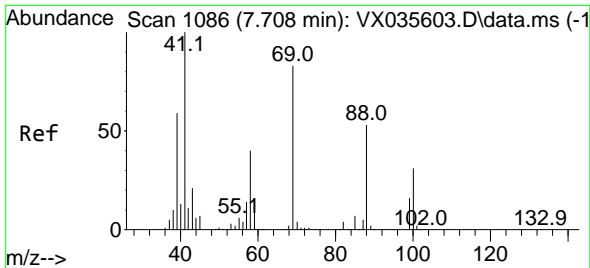
Tgt Ion:117 Resp: 19135
 Ion Ratio Lower Upper
 117 100
 119 3.6 76.6 114.8#
 121 0.0 23.8 35.6#



#44
 Trichloroethene
 Concen: 42.079 ug/l
 RT: 7.123 min Scan# 990
 Delta R.T. -0.000 min
 Lab File: VX035687.D
 Acq: 16 May 2023 13:43

Tgt Ion:130 Resp: 96487
 Ion Ratio Lower Upper
 130 100
 95 108.2 0.0 198.4

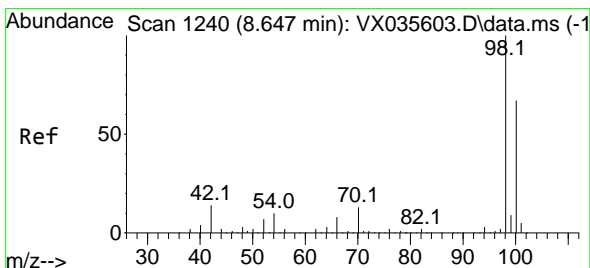
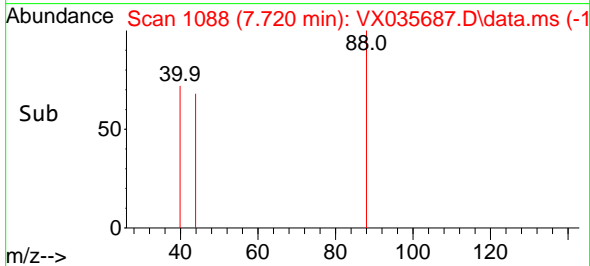
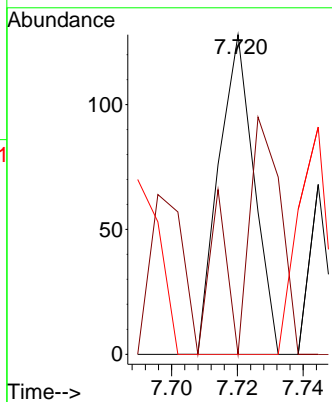
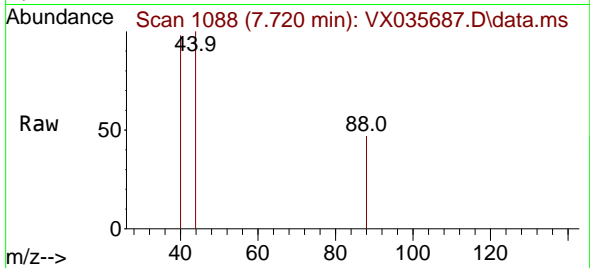




#49
 1,4-Dioxane
 Concen: 3.476 ug/l
 RT: 7.720 min Scan# 1086
 Delta R.T. 0.012 min
 Lab File: VX035687.D
 Acq: 16 May 2023 13:43

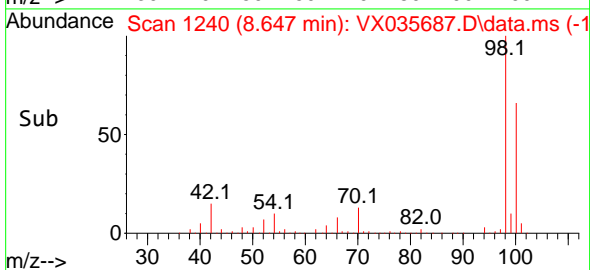
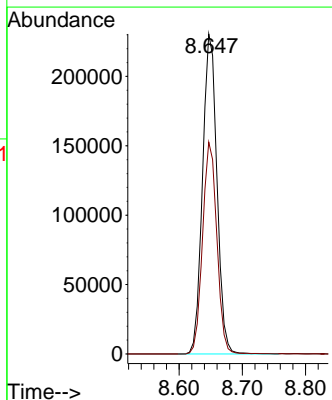
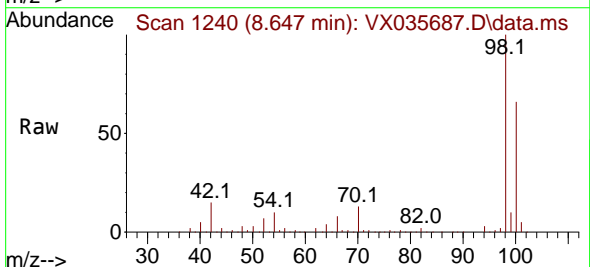
Instrument : MSVOA_X
 ClientSampleId : FSND-PRO-07-99-05032023DL

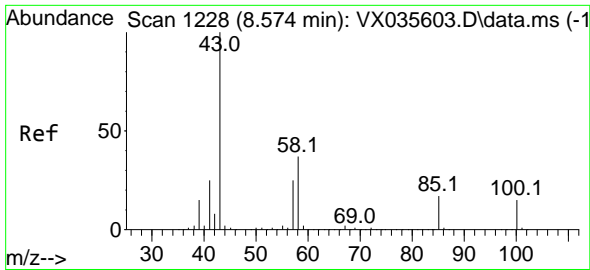
Tgt Ion	Resp	Lower	Upper
88	100		
43	89.5	27.7	41.5#
58	0.0	56.8	85.2#



#50
 Toluene-d8
 Concen: 48.353 ug/l
 RT: 8.647 min Scan# 1240
 Delta R.T. -0.000 min
 Lab File: VX035687.D
 Acq: 16 May 2023 13:43

Tgt Ion	Resp	Lower	Upper
98	100		
100	65.6	52.5	78.7

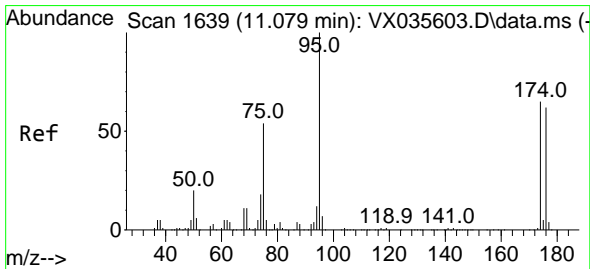
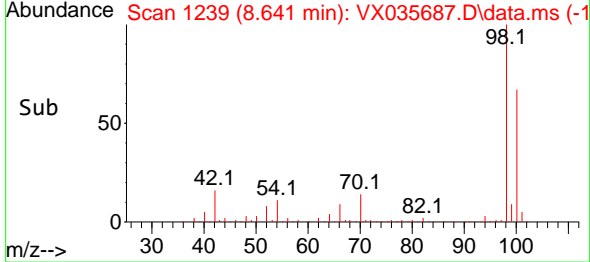
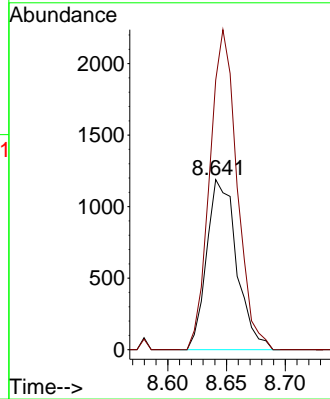
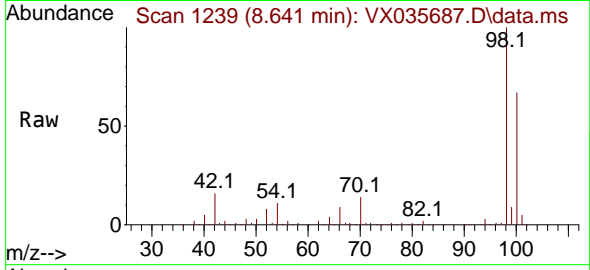




#51
 4-Methyl-2-Pentanone
 Concen: 0.623 ug/l
 RT: 8.641 min Scan# 11
 Delta R.T. 0.067 min
 Lab File: VX035687.D
 Acq: 16 May 2023 13:43

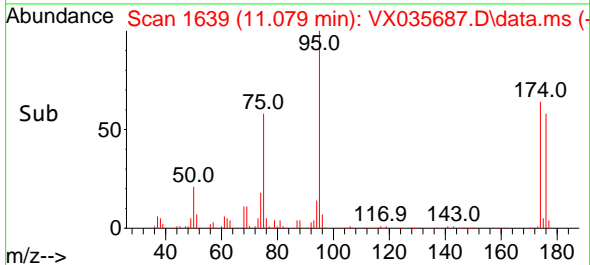
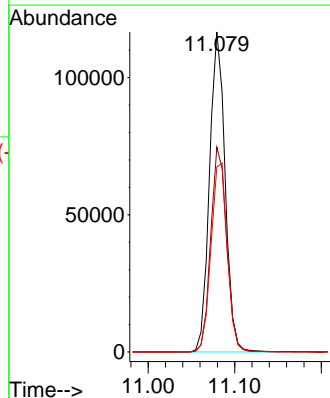
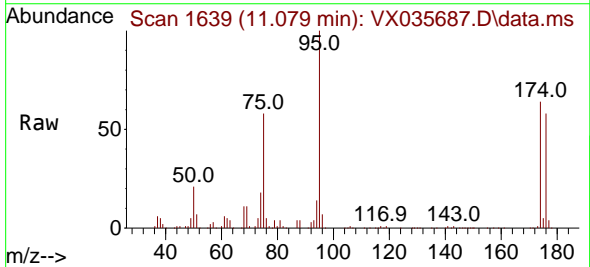
Instrument : MSVOA_X
 ClientSampleId : FSND-PRO-07-99-05032023DL

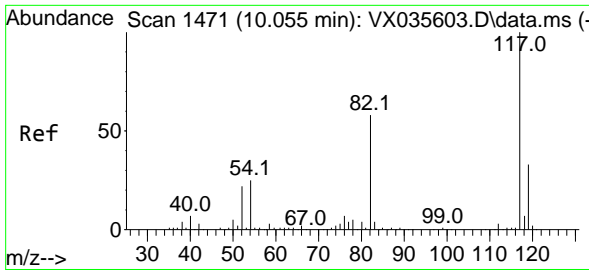
Tgt Ion: 43 Resp: 2111
 Ion Ratio Lower Upper
 43 100
 58 171.5 30.6 46.0#



#62
 4-Bromofluorobenzene
 Concen: 47.848 ug/l
 RT: 11.079 min Scan# 1639
 Delta R.T. 0.000 min
 Lab File: VX035687.D
 Acq: 16 May 2023 13:43

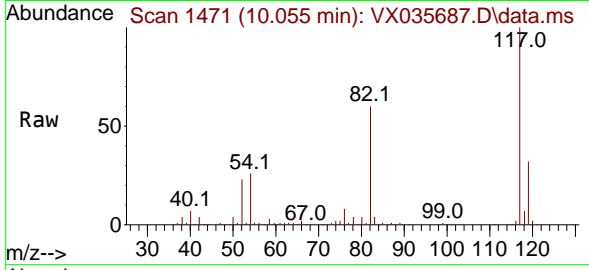
Tgt Ion: 95 Resp: 145755
 Ion Ratio Lower Upper
 95 100
 174 65.4 0.0 147.4
 176 62.0 0.0 140.6



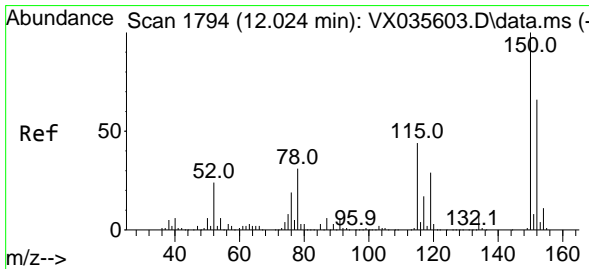
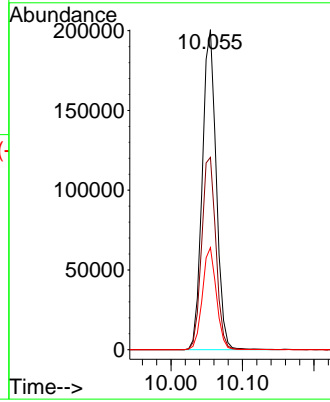
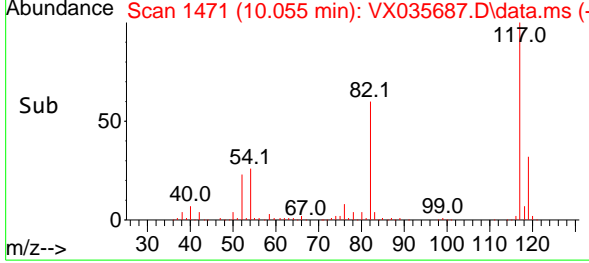


#63
 Chlorobenzene-d5
 Concen: 50.000 ug/l
 RT: 10.055 min Scan# 1471
 Delta R.T. 0.000 min
 Lab File: VX035687.D
 Acq: 16 May 2023 13:43

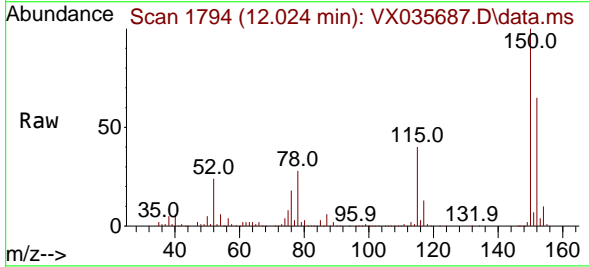
Instrument : MSVOA_X
 ClientSampleId : FSND-PRO-07-99-05032023DL



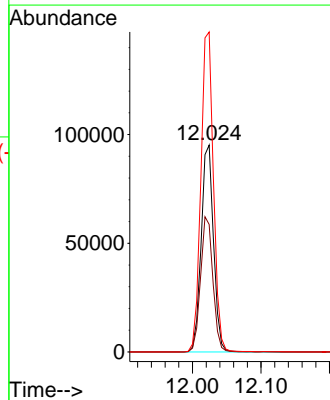
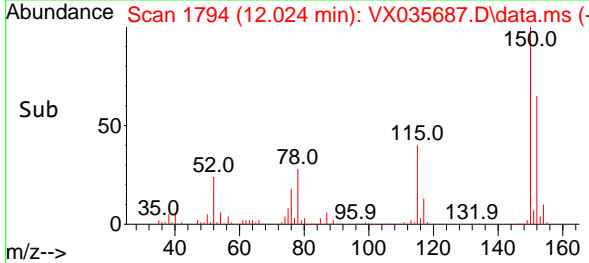
Tgt Ion:117 Resp: 271575
 Ion Ratio Lower Upper
 117 100
 82 60.1 45.0 67.4
 119 31.9 26.0 39.0

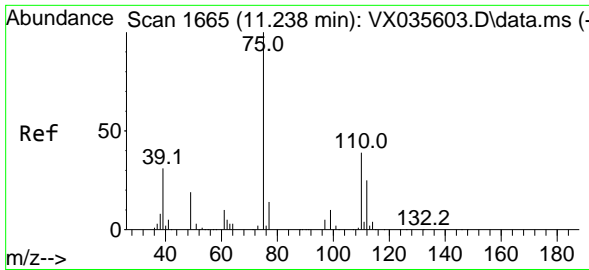


#72
 1,4-Dichlorobenzene-d4
 Concen: 50.000 ug/l
 RT: 12.024 min Scan# 1794
 Delta R.T. 0.000 min
 Lab File: VX035687.D
 Acq: 16 May 2023 13:43



Tgt Ion:152 Resp: 119718
 Ion Ratio Lower Upper
 152 100
 115 65.2 45.0 135.0
 150 157.4 0.0 352.4

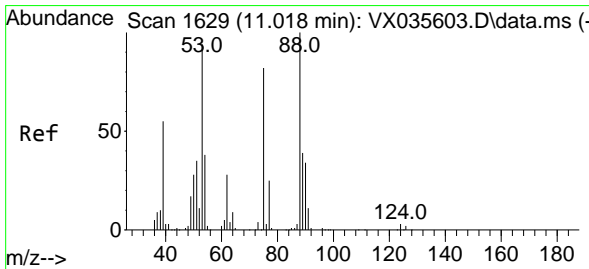
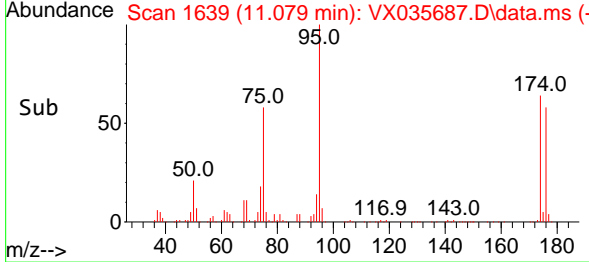
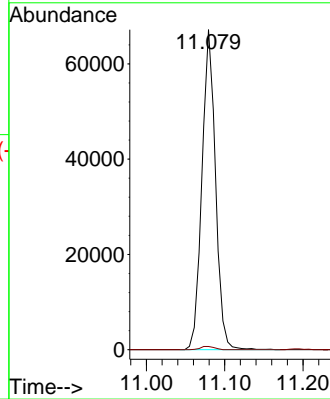
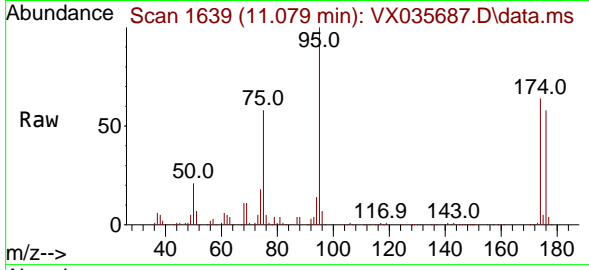




#76
 1,2,3-Trichloropropane
 Concen: 27.566 ug/l
 RT: 11.079 min Scan# 1639
 Delta R.T. -0.159 min
 Lab File: VX035687.D
 Acq: 16 May 2023 13:43

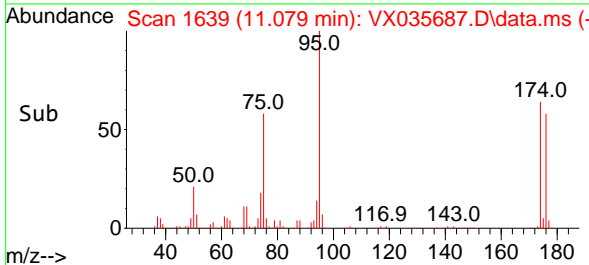
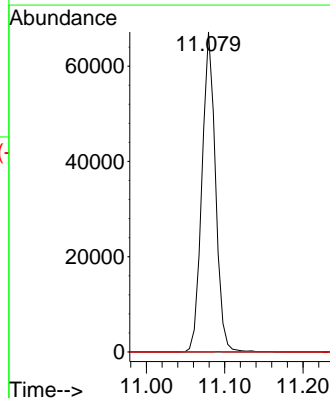
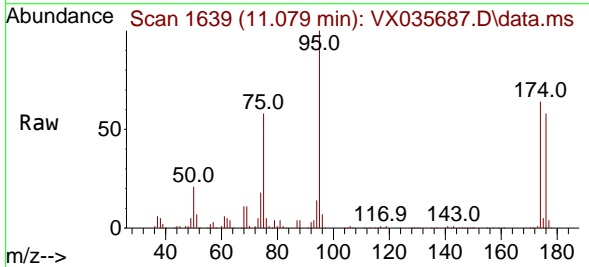
Instrument : MSVOA_X
 ClientSampleId : FSND-PRO-07-99-05032023DL

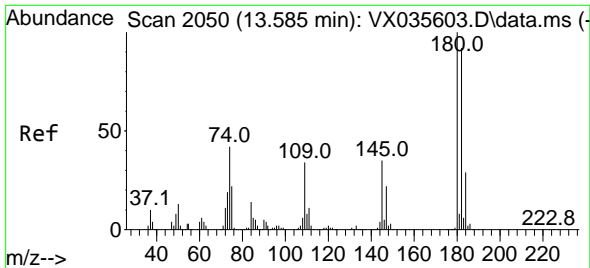
Tgt Ion: 75 Resp: 80724
 Ion Ratio Lower Upper
 75 100
 77 1.1 21.6 64.8#



#81
 trans-1,4-Dichloro-2-butene
 Concen: 88.843 ug/l
 RT: 11.079 min Scan# 1639
 Delta R.T. 0.061 min
 Lab File: VX035687.D
 Acq: 16 May 2023 13:43

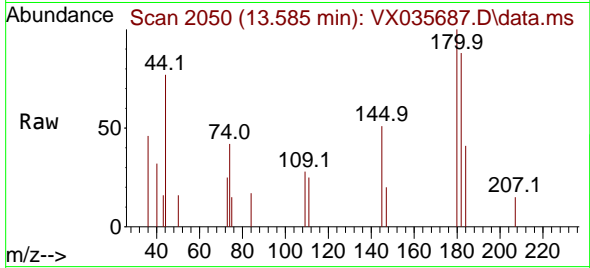
Tgt Ion: 75 Resp: 80724
 Ion Ratio Lower Upper
 75 100
 53 0.0 82.6 124.0#
 89 0.0 36.9 55.3#



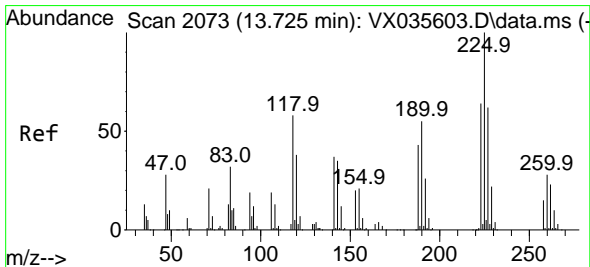
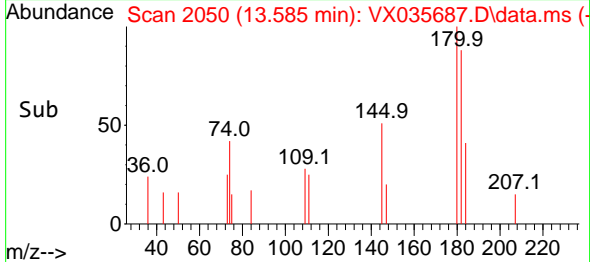
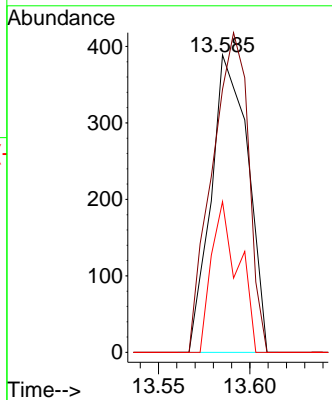


#93
 1,2,4-Trichlorobenzene
 Concen: 0.213 ug/l
 RT: 13.585 min Scan# 2050
 Delta R.T. -0.000 min
 Lab File: VX035687.D
 Acq: 16 May 2023 13:43

Instrument : MSVOA_X
 ClientSampleId : FSND-PRO-07-99-05032023DL

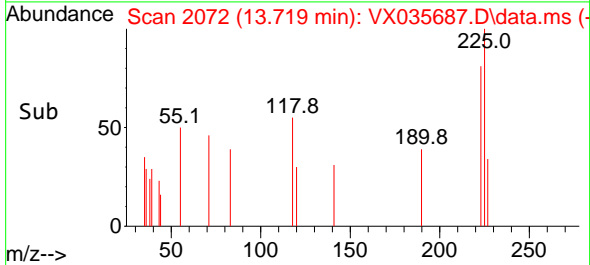
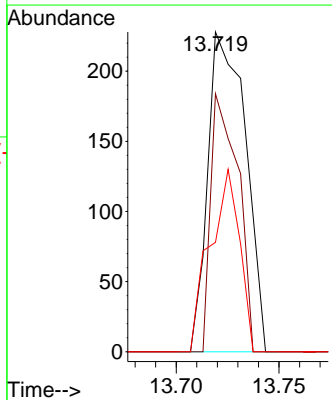
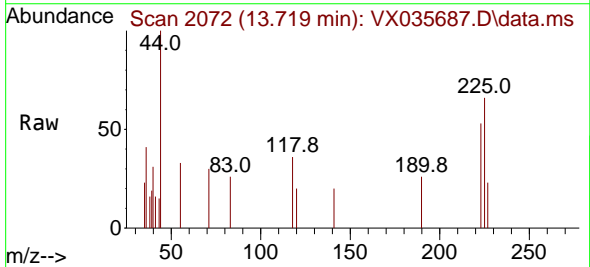


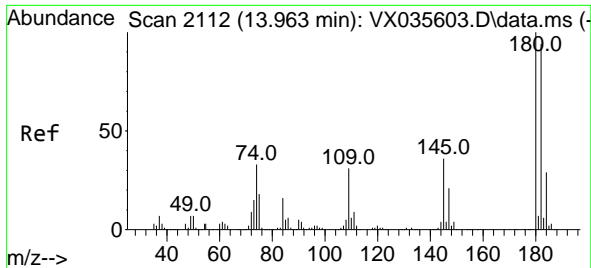
Tgt Ion:180 Resp: 546
 Ion Ratio Lower Upper
 180 100
 182 106.2 47.0 141.0
 145 37.0 15.9 47.7



#94
 Hexachlorobutadiene
 Concen: 0.285 ug/l
 RT: 13.719 min Scan# 2072
 Delta R.T. -0.006 min
 Lab File: VX035687.D
 Acq: 16 May 2023 13:43

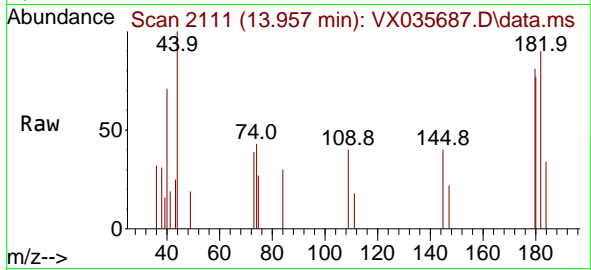
Tgt Ion:225 Resp: 290
 Ion Ratio Lower Upper
 225 100
 223 58.3 32.1 96.5
 227 45.2 31.8 95.4





#96
 1,2,3-Trichlorobenzene
 Concen: 0.225 ug/l
 RT: 13.957 min Scan# 2111
 Delta R.T. -0.006 min
 Lab File: VX035687.D
 Acq: 16 May 2023 13:43

Instrument : MSVOA_X
 ClientSampleId : FSND-PRO-07-99-05032023DL



Tgt Ion:180 Resp: 567

Ion	Ratio	Lower	Upper
180	100		
182	88.0	48.0	144.2
145	36.7	17.7	53.1

