

Data Path : Z:\voasrv\HPCHEM1\MSVOA_X\Data\VX051624\
 Data File : VX041551.D
 Acq On : 16 May 2024 09:50
 Operator : JC/MD
 Sample : VX0516WBS01
 Misc : 5.0mL/MSVOA_X/WATER
 ALS Vial : 3 Sample Multiplier: 1

Instrument :
 MSVOA_X
ClientSampleId :

Quant Time: May 17 02:35:28 2024
 Quant Method : Z:\voasrv\HPCHEM1\MSVOA_X\Method\624X051524W.M
 Quant Title : METHOD 624 VOLATILE ORGANIC ANALYSIS
 QLast Update : Thu May 16 05:13:13 2024
 Response via : Initial Calibration

Compound	R.T.	QI on	Response	Conc	Units	Dev(Min)
Internal Standards						
1) Bromochloromethane	4.891	128	31946	30.000	ug/l	0.00
28) 1,4-Difluorobenzene	6.757	114	179505	30.000	ug/l	0.00
57) Chlorobenzene-d5	10.049	117	169309	30.000	ug/l	0.00
System Monitoring Compounds						
27) 1,2-Dichloroethane-d4	5.946	65	75469	29.999	ug/l	0.00
Spike Amount	30.000	Range	91 - 110	Recovery	=	100.000%
60) 4-Bromofluorobenzene	11.079	95	80424	30.429	ug/l	0.00
Spike Amount	30.000	Range	63 - 112	Recovery	=	101.433%
63) Toluene-d8	8.647	98	218084	30.049	ug/l	0.00
Spike Amount	30.000	Range	91 - 112	Recovery	=	100.167%
Target Compounds						
						Qvalue
2) Dichlorodifluoromethane	1.166	85	33138	19.832	ug/l	99
3) Chloromethane	1.294	50	33118	18.100	ug/l	99
4) Vinyl Chloride	1.374	62	35595	18.477	ug/l	97
5) Bromomethane	1.599	94	22620	18.461	ug/l	94
6) Chloroethane	1.666	64	20255	20.796	ug/l	100
7) Trichlorofluoromethane	1.868	101	57333	19.607	ug/l	95
8) Diethyl Ether	2.136	74	21013	19.243	ug/l	99
9) 1,1,2-Trichlorotri fluo...	2.319	101	36271	21.390	ug/l	98
10) 1,1-Dichloroethene	2.306	96	34374	21.031	ug/l	97
11) Methyl Iodide	2.447	142	42074	21.613	ug/l	98
12) Methyl Acetate	2.703	43	48573	19.732	ug/l	94
13) Acrolein	2.239	56	34391	114.762	ug/l	99
14) Acrylonitrile	3.069	53	99630	92.057	ug/l	99
15) Acetone	2.386	58	33109	114.180	ug/l	97
16) Carbon Disulfide	2.502	76	71172	19.286	ug/l	99
17) Allyl chloride	2.660	41	56790	19.579	ug/l	98
18) Methylene Chloride	2.782	84	37557	19.320	ug/l	96
19) trans-1,2-Dichloroethene	3.087	96	34954	18.650	ug/l	92
20) Diisopropyl ether	3.764	45	115520	18.956	ug/l	93
21) 1,1-Dichloroethane	3.605	63	64898	18.974	ug/l	100
22) cis-1,2-Dichloroethene	4.483	96	42401	18.618	ug/l	97
23) tert-Butyl Alcohol	2.995	59	41843	91.106	ug/l	# 100
24) Methyl tert-Butyl Ether	3.117	73	112428	18.425	ug/l	98
25) Chloroform	5.080	83	68467	18.791	ug/l	98
26) Cyclohexane	5.464	56	53999	18.932	ug/l	# 100
29) 1,1-Dichloropropene	5.684	75	46021	19.381	ug/l	100
30) 2-Butanone	4.562	43	153627	97.473	ug/l	99
31) 2,2-Dichloropropane	4.465	77	53614	19.238	ug/l	99
32) 1,1,1-Trichloroethane	5.373	97	59743	18.751	ug/l	98
33) Carbon Tetrachloride	5.666	117	51917	19.044	ug/l	95
34) Benzene	6.031	78	143719	19.165	ug/l	97
35) Methacrylonitrile	4.922	41	30260	19.033	ug/l	99
36) 1,2-Dichloroethane	6.080	62	53842	19.240	ug/l	99
37) Trichloroethene	7.123	130	38801	18.570	ug/l	99
38) Methyl cyclohexane	7.373	83	58900	19.536	ug/l	99
39) 1,2-Dichloropropane	7.428	63	33788	19.060	ug/l	99
40) Dibromomethane	7.580	93	26864	19.255	ug/l	96
41) Bromodichloromethane	7.818	83	48630	18.566	ug/l	100
42) Vinyl Acetate	3.721	43	518983	94.907	ug/l	100

Data Path : Z:\voasrv\HPCHEM1\MSVOA_X\Data\VX051624\
 Data File : VX041551.D
 Acq On : 16 May 2024 09:50
 Operator : JC/MD
 Sample : VX0516WBS01
 Misc : 5.0mL/MSVOA_X/WATER
 ALS Vial : 3 Sample Multiplier: 1

Instrument :
 MSVOA_X
ClientSampleId :

Quant Time: May 17 02:35:28 2024
 Quant Method : Z:\voasrv\HPCHEM1\MSVOA_X\Method\624X051524W.M
 Quant Title : METHOD 624 VOLATILE ORGANIC ANALYSIS
 QLast Update : Thu May 16 05:13:13 2024
 Response via : Initial Calibration

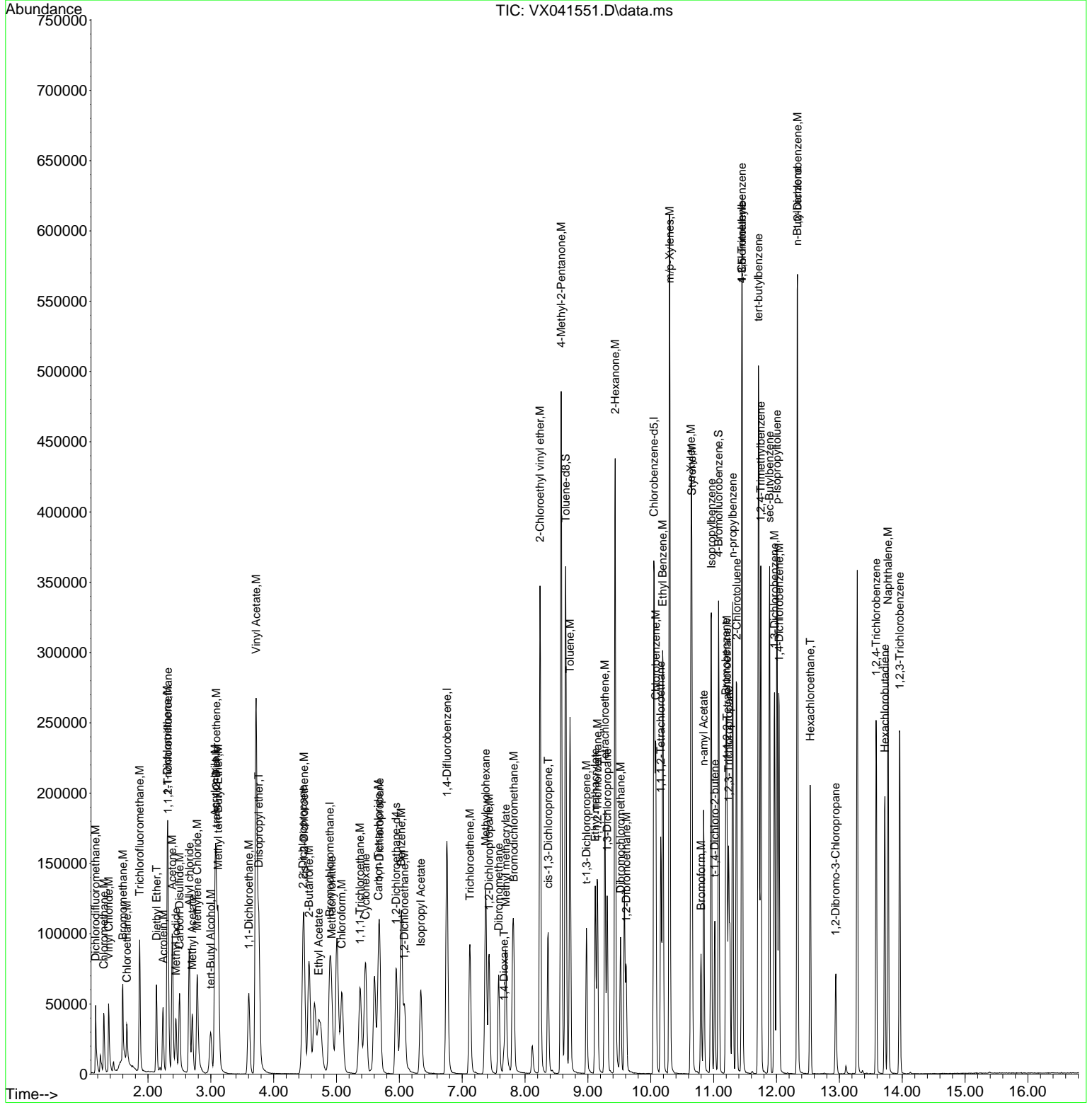
Compound	R. T.	QI on	Response	Conc	Units	Dev(Min)
43) Ethyl Acetate	4.715	43	56431	18.556	ug/l	99
44) Isopropyl Acetate	6.342	43	85236	18.542	ug/l	99
45) 1,4-Dioxane	7.665	88	16146	311.440	ug/l #	80
46) Methyl methacrylate	7.690	41	42865	18.741	ug/l	97
47) n-amyl Acetate	10.842	43	76523	18.357	ug/l	98
48) t-1,3-Dichloropropene	8.976	75	47237	17.958	ug/l	98
49) cis-1,3-Dichloropropene	8.366	75	53801	18.884	ug/l	96
50) 1,1,2-Trichloroethane	9.153	97	36541	18.827	ug/l	93
51) Ethyl methacrylate	9.116	69	57752	18.487	ug/l	96
52) 1,3-Dichloropropane	9.305	76	61220	19.089	ug/l	100
53) Dibromochloromethane	9.519	129	41253	18.681	ug/l	99
54) 1,2-Dibromoethane	9.610	107	39649	19.265	ug/l	99
55) 2-Chloroethyl vinyl ether	8.238	63	133621	87.630	ug/l	99
56) Bromoform	10.799	173	32044	18.112	ug/l	98
58) 4-Methyl-2-Pentanone	8.574	43	292918	94.687	ug/l	99
59) 2-Hexanone	9.433	43	235173	95.426	ug/l	99
61) Tetrachloroethene	9.269	164	38242	18.461	ug/l	92
62) Toluene	8.714	91	160660	19.070	ug/l	99
64) Chlorobenzene	10.079	112	106951	18.690	ug/l	100
65) 1,1,1,2-Tetrachloroethane	10.159	131	37488	18.509	ug/l	98
66) Ethyl Benzene	10.189	91	176833	18.903	ug/l	98
67) m/p-Xylenes	10.299	106	141244	38.611	ug/l	98
68) o-Xylene	10.640	106	69305	18.821	ug/l	99
69) Styrene	10.653	104	115479	18.704	ug/l	99
70) Isopropyl benzene	10.963	105	181181	19.472	ug/l	100
71) 1,1,2,2-Tetrachloroethane	11.213	83	60605	18.960	ug/l	99
72) 1,2,3-Trichloropropane	11.238	75	65298	22.652	ug/l	90
73) Bromobenzene	11.195	156	50587	18.503	ug/l	98
74) n-propyl benzene	11.305	91	203555	19.401	ug/l	100
75) 2-Chlorotoluene	11.366	91	126603	19.215	ug/l	100
76) 1,3,5-Trimethyl benzene	11.451	105	151957	19.133	ug/l	100
77) t-1,4-Dichloro-2-butene	11.018	75	16365	18.062	ug/l	94
78) 4-Chlorotoluene	11.451	91	142718	19.018	ug/l	99
79) tert-butyl benzene	11.713	119	159648	18.887	ug/l	99
80) 1,2,4-Trimethyl benzene	11.750	105	154238	19.376	ug/l	98
81) sec-Butyl benzene	11.890	105	192825	19.522	ug/l	100
82) p-Isopropyl toluene	12.006	119	167560	19.379	ug/l	99
83) 1,3-Dichlorobenzene	11.969	146	93510	19.071	ug/l	99
84) 1,4-Dichlorobenzene	12.043	146	93132	18.798	ug/l	99
85) n-Butyl benzene	12.329	91	133121	19.133	ug/l	100
86) Hexachloroethane	12.536	117	26198	17.997	ug/l	99
87) 1,2-Dichlorobenzene	12.335	146	93610	18.705	ug/l	99
88) 1,2-Dibromo-3-Chloropropane	12.939	75	13064	18.610	ug/l	98
89) 1,2,4-Trichlorobenzene	13.585	180	63493	18.882	ug/l	100
90) Hexachlorobutadiene	13.725	225	32176	19.613	ug/l	98
91) Naphthalene	13.774	128	187263	18.632	ug/l	99
92) 1,2,3-Trichlorobenzene	13.963	180	66193	19.267	ug/l	100

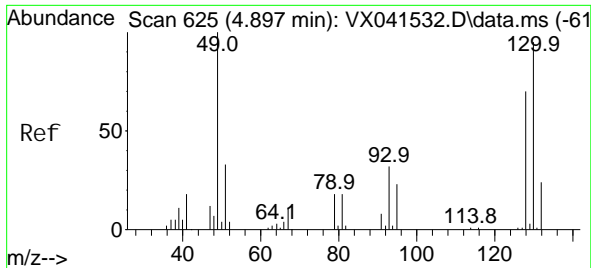
(#) = qualifier out of range (m) = manual integration (+) = signals summed

Data Path : Z:\voasrv\HPCHEM1\MSVOA_X\Data\VX051624\
 Data File : VX041551.D
 Acq On : 16 May 2024 09:50
 Operator : JC/MD
 Sample : VX0516WBS01
 Misc : 5.0mL/MSVOA_X/WATER
 ALS Vial : 3 Sample Multiplier: 1

Instrument :
 MSVOA_X
 ClientSampleId :

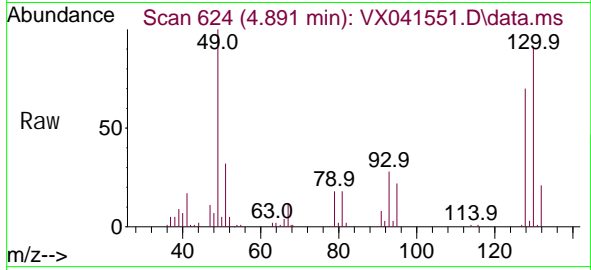
Quant Time: May 17 02:35:28 2024
 Quant Method : Z:\voasrv\HPCHEM1\MSVOA_X\Method\624X051524W.M
 Quant Title : METHOD 624 VOLATILE ORGANIC ANALYSIS
 QLast Update : Thu May 16 05:13:13 2024
 Response via : Initial Calibration





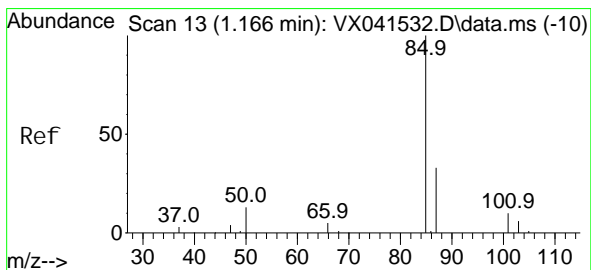
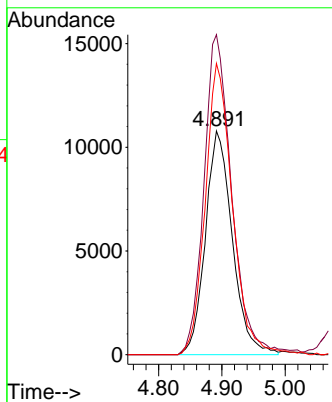
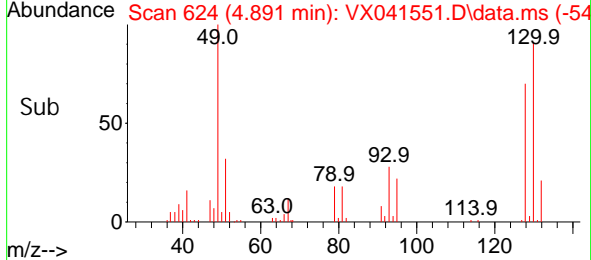
#1
 Bromochloromethane
 Concen: 30.000 ug/l
 RT: 4.891 min Scan# 61
 Delta R.T. -0.006 min
 Lab File: VX041551.D
 Acq: 16 May 2024 09:50

Instrument : MSVOA_X
 ClientSampleId :

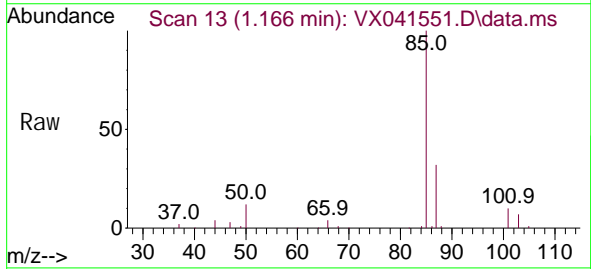


Tgt Ion: 128 Resp: 31946

Ion	Ratio	Lower	Upper
128	100		
49	145.5	0.0	361.5
130	131.4	0.0	324.3

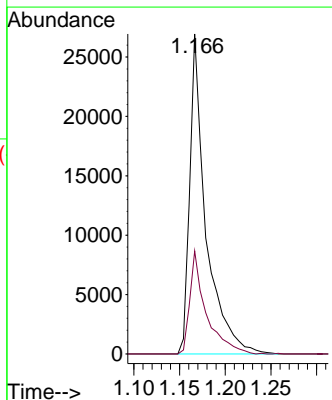
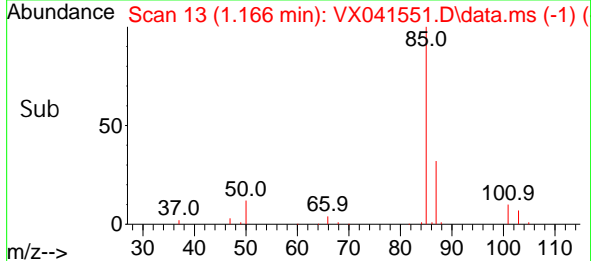


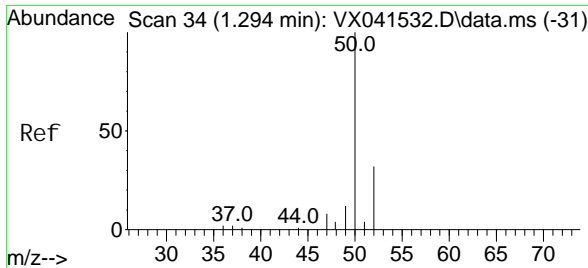
#2
 Dichlorodifluoromethane
 Concen: 19.832 ug/l
 RT: 1.166 min Scan# 13
 Delta R.T. 0.000 min
 Lab File: VX041551.D
 Acq: 16 May 2024 09:50



Tgt Ion: 85 Resp: 33138

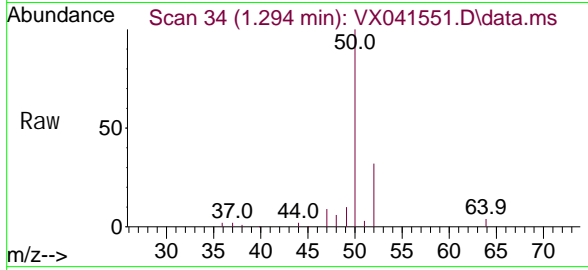
Ion	Ratio	Lower	Upper
85	100		
87	32.2	16.4	49.1



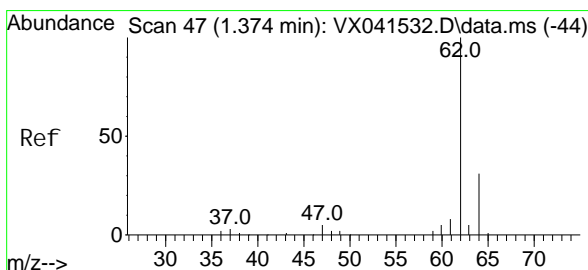
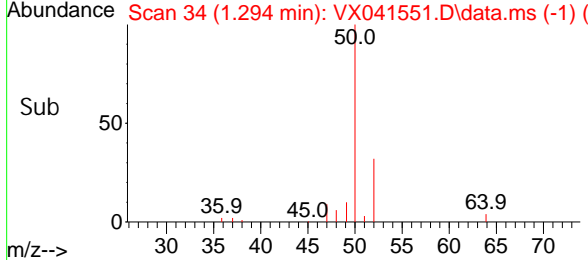
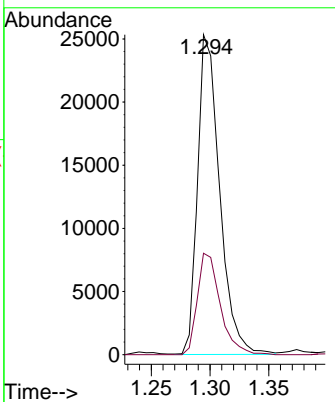


#3
 Chloromethane
 Concen: 18.100 ug/l
 RT: 1.294 min Scan# 34
 Delta R.T. 0.000 min
 Lab File: VX041551.D
 Acq: 16 May 2024 09:50

Instrument :
 MSVOA_X
 ClientSampleId :

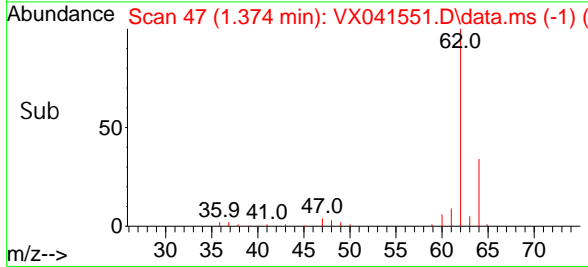
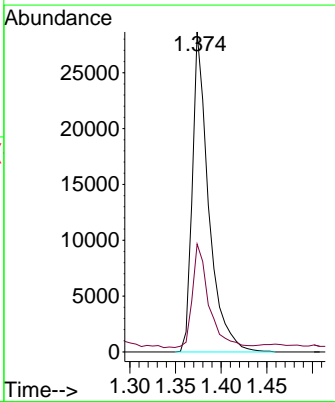
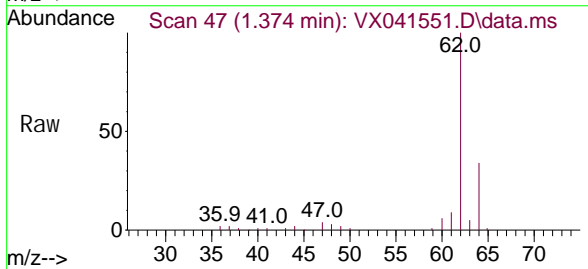


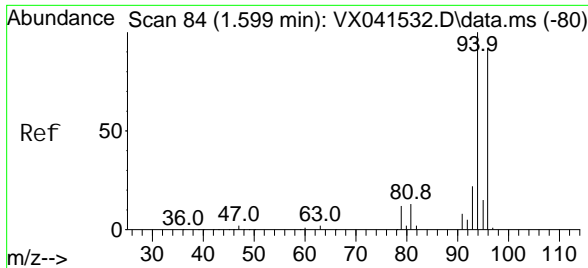
Tgt Ion: 50 Resp: 33118
 Ion Ratio Lower Upper
 50 100
 52 31.8 25.8 38.8



#4
 Vinyl Chloride
 Concen: 18.477 ug/l
 RT: 1.374 min Scan# 47
 Delta R.T. 0.000 min
 Lab File: VX041551.D
 Acq: 16 May 2024 09:50

Tgt Ion: 62 Resp: 35595
 Ion Ratio Lower Upper
 62 100
 64 32.4 24.6 37.0

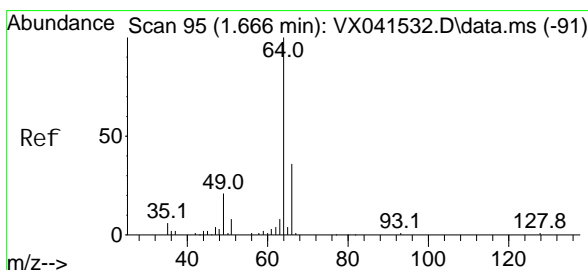
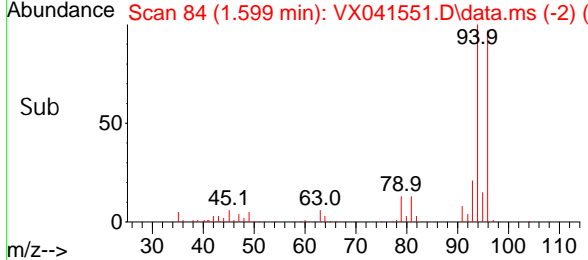
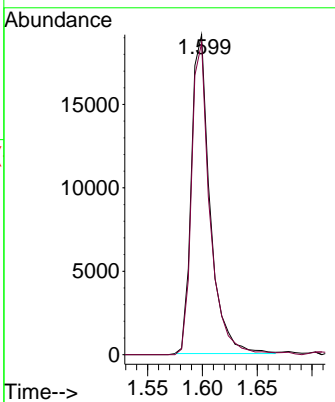
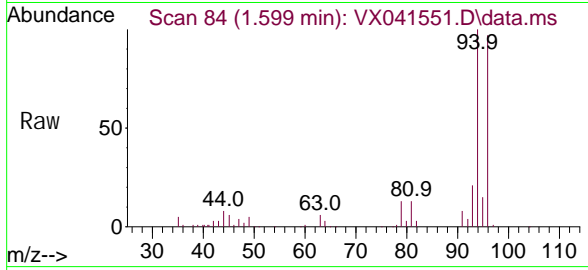




#5
 Bromomethane
 Concen: 18.461 ug/l
 RT: 1.599 min Scan# 84
 Delta R.T. 0.000 min
 Lab File: VX041551.D
 Acq: 16 May 2024 09:50

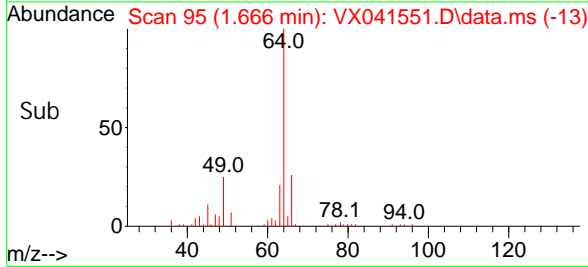
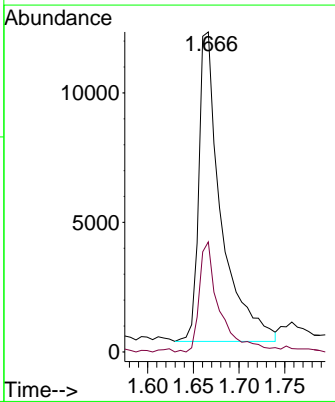
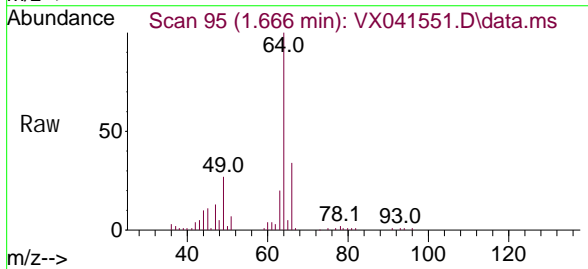
Instrument : MSVOA_X
 ClientSampleId :

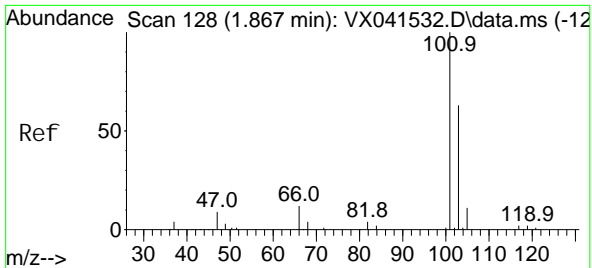
Tgt Ion: 94 Resp: 22620
 Ion Ratio Lower Upper
 94 100
 96 97.8 73.9 110.9



#6
 Chloroethane
 Concen: 20.796 ug/l
 RT: 1.666 min Scan# 95
 Delta R.T. 0.000 min
 Lab File: VX041551.D
 Acq: 16 May 2024 09:50

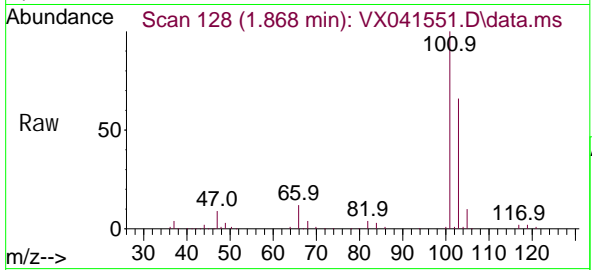
Tgt Ion: 64 Resp: 20255
 Ion Ratio Lower Upper
 64 100
 66 35.6 28.6 42.8



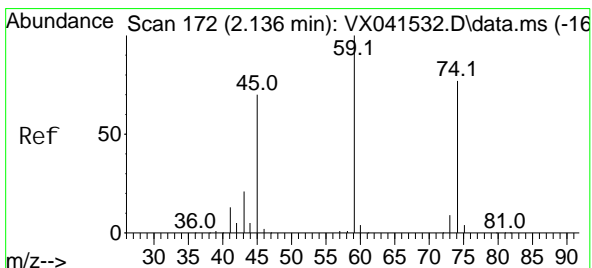
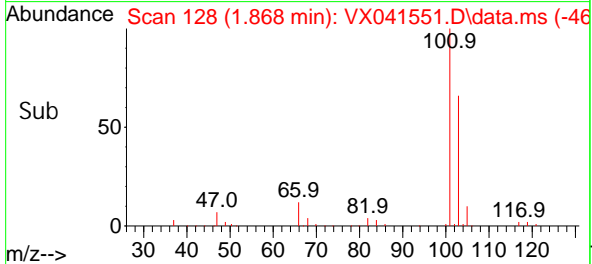
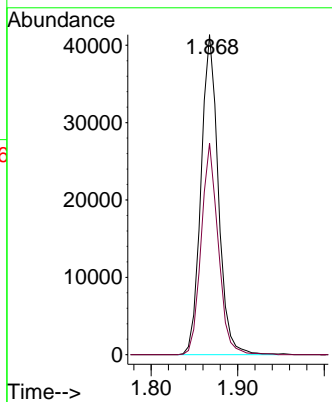


#7
 Tri chlorofluoromethane
 Concen: 19.607 ug/l
 RT: 1.868 min Scan# 11
 Delta R.T. 0.000 min
 Lab File: VX041551.D
 Acq: 16 May 2024 09:50

Instrument :
 MSVOA_X
 ClientSampleId :

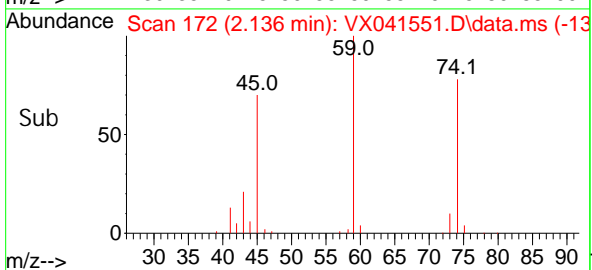
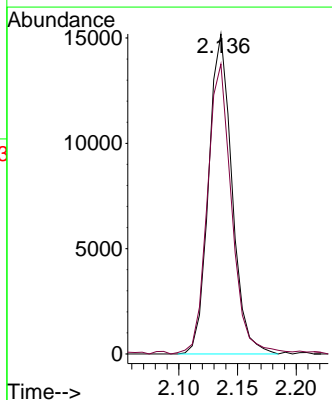
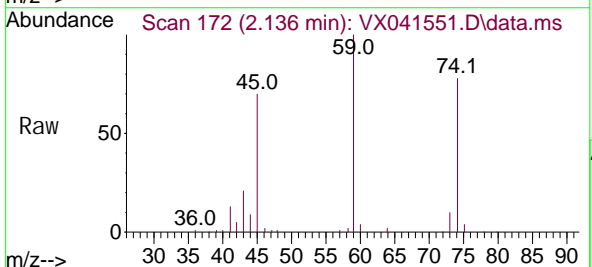


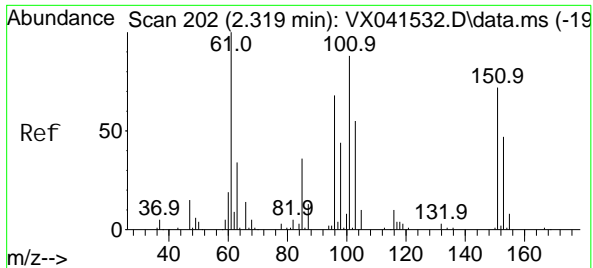
Tgt Ion: 101 Resp: 57333
 Ion Ratio Lower Upper
 101 100
 103 66.1 50.1 75.1



#8
 Diethyl Ether
 Concen: 19.243 ug/l
 RT: 2.136 min Scan# 172
 Delta R.T. 0.000 min
 Lab File: VX041551.D
 Acq: 16 May 2024 09:50

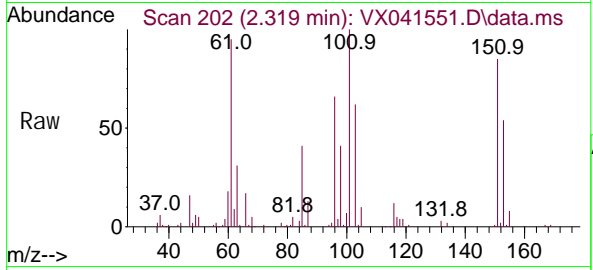
Tgt Ion: 74 Resp: 21013
 Ion Ratio Lower Upper
 74 100
 45 94.3 18.6 167.4



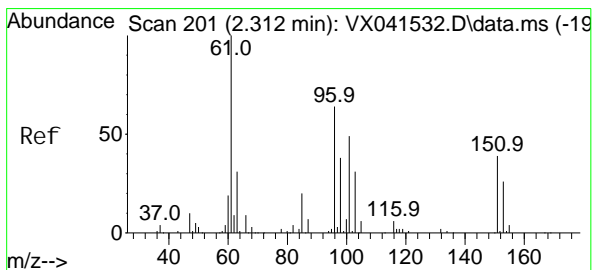
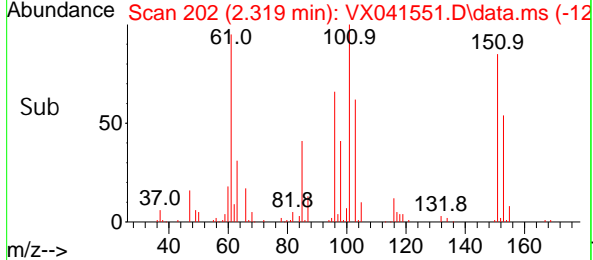
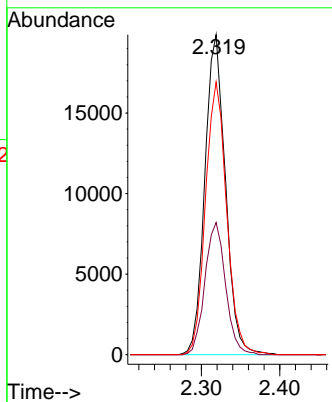


#9
 1,1,2-Trichloroethane
 Concen: 21.390 ug/l
 RT: 2.319 min Scan# 200
 Delta R.T. 0.000 min
 Lab File: VX041551.D
 Acq: 16 May 2024 09:50

Instrument :
 MSVOA_X
 ClientSampleId :

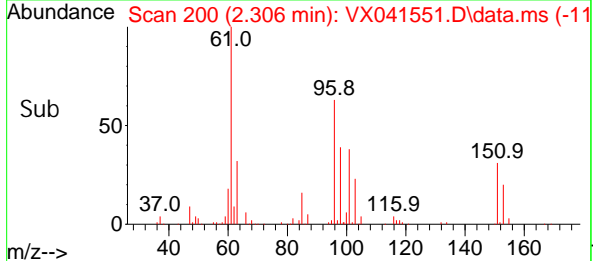
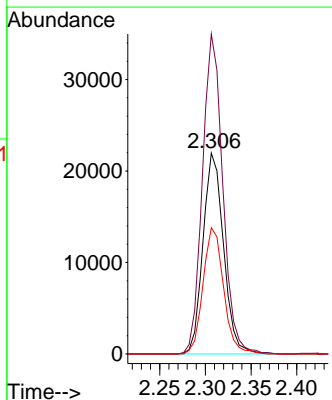
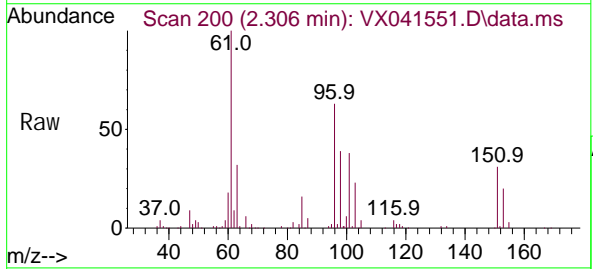


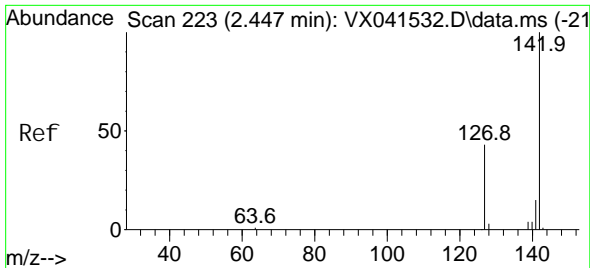
Tgt Ion: 101 Resp: 36271
 Ion Ratio Lower Upper
 101 100
 85 41.5 0.0 84.6
 151 87.6 0.0 170.2



#10
 1,1-Dichloroethene
 Concen: 21.031 ug/l
 RT: 2.306 min Scan# 200
 Delta R.T. -0.006 min
 Lab File: VX041551.D
 Acq: 16 May 2024 09:50

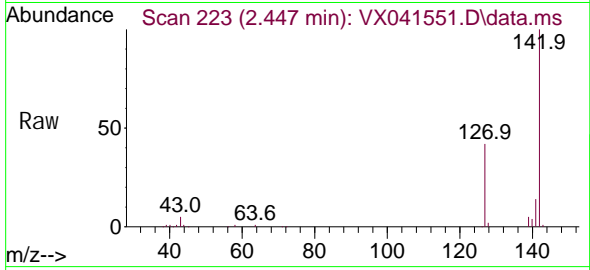
Tgt Ion: 96 Resp: 34374
 Ion Ratio Lower Upper
 96 100
 61 159.2 124.5 186.7
 98 62.8 47.9 71.9



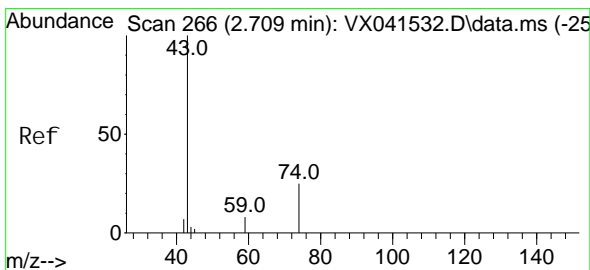
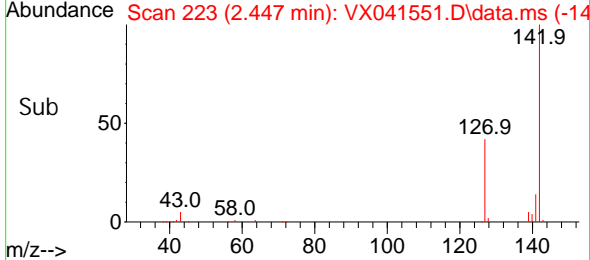
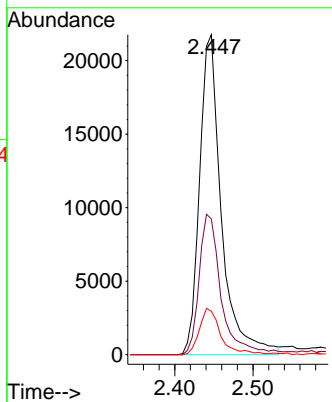


#11
Methyl Iodide
Concen: 21.613 ug/l
RT: 2.447 min Scan# 21
Delta R.T. 0.000 min
Lab File: VX041551.D
Acq: 16 May 2024 09:50

Instrument : MSVOA_X
ClientSampleId :

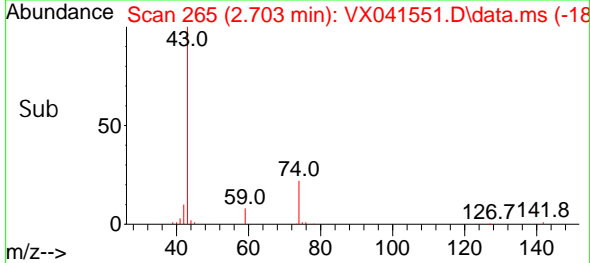
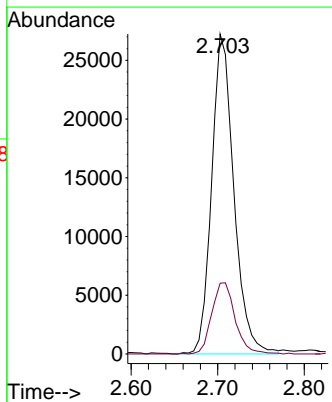
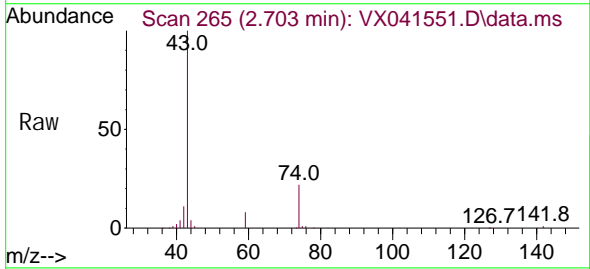


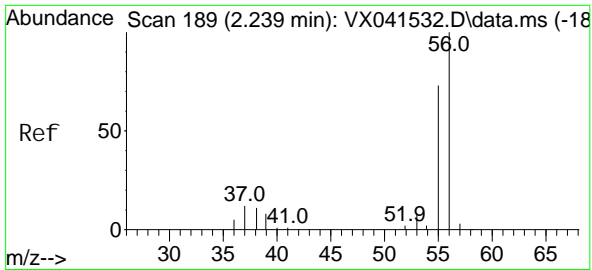
Tgt Ion: 142 Resp: 42074
Ion Ratio Lower Upper
142 100
127 42.4 21.4 64.2
141 13.5 7.6 22.8



#12
Methyl Acetate
Concen: 19.732 ug/l
RT: 2.703 min Scan# 265
Delta R.T. -0.006 min
Lab File: VX041551.D
Acq: 16 May 2024 09:50

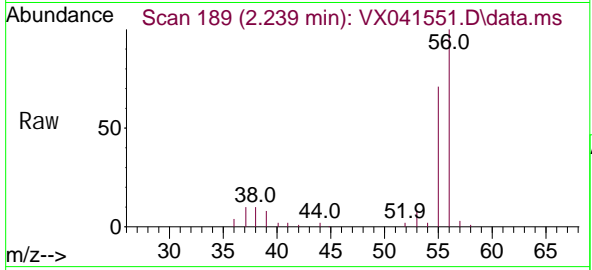
Tgt Ion: 43 Resp: 48573
Ion Ratio Lower Upper
43 100
74 22.1 19.9 29.9



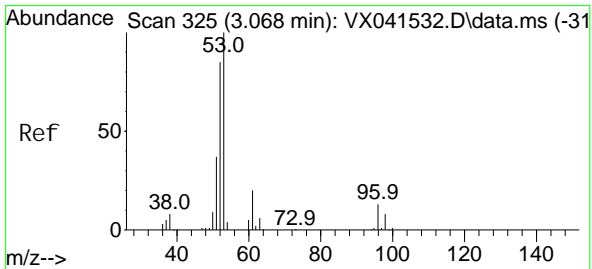
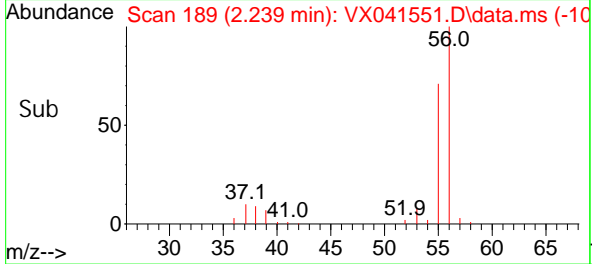
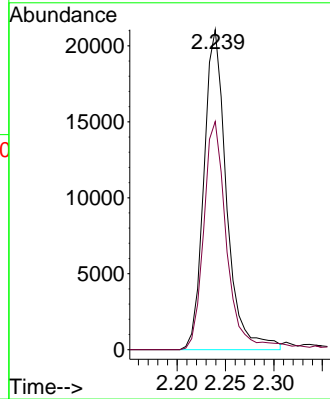


#13
 Acrolein
 Concen: 114.762 ug/l
 RT: 2.239 min Scan# 189
 Delta R.T. 0.000 min
 Lab File: VX041551.D
 Acq: 16 May 2024 09:50

Instrument :
 MSVOA_X
 ClientSampleId :

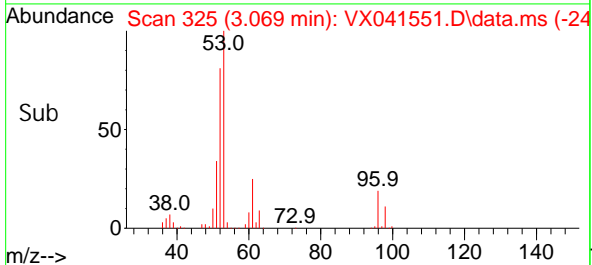
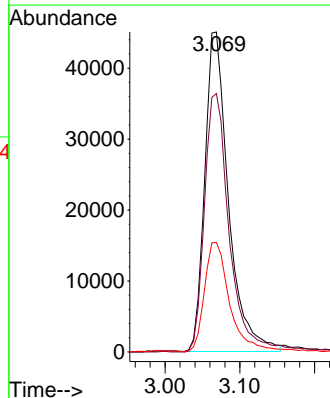
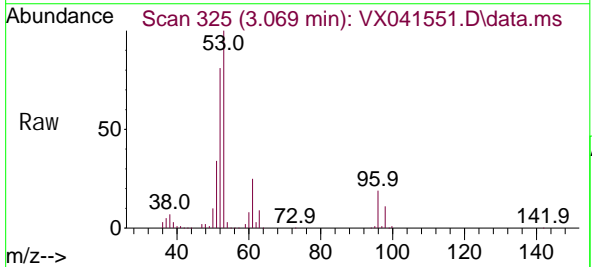


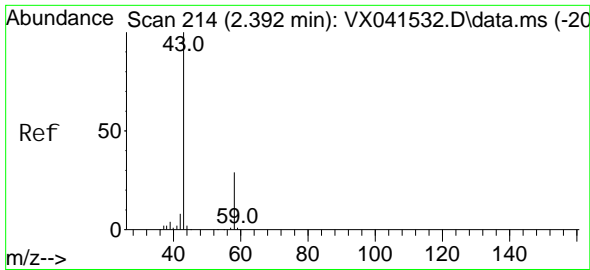
Tgt Ion: 56 Resp: 34391
 Ion Ratio Lower Upper
 56 100
 55 69.8 55.1 82.7



#14
 Acrylonitrile
 Concen: 92.057 ug/l
 RT: 3.069 min Scan# 325
 Delta R.T. 0.000 min
 Lab File: VX041551.D
 Acq: 16 May 2024 09:50

Tgt Ion: 53 Resp: 99630
 Ion Ratio Lower Upper
 53 100
 52 83.4 41.3 123.7
 51 37.0 18.4 55.0

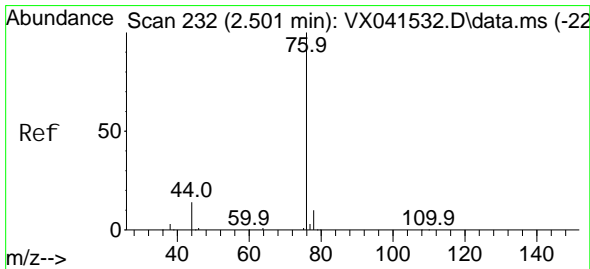
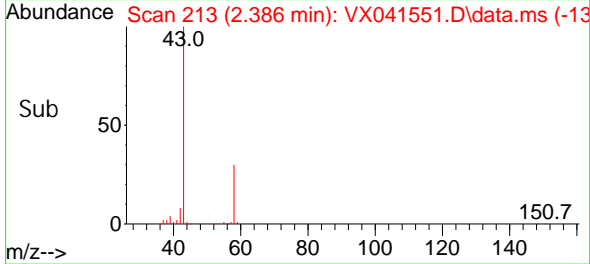
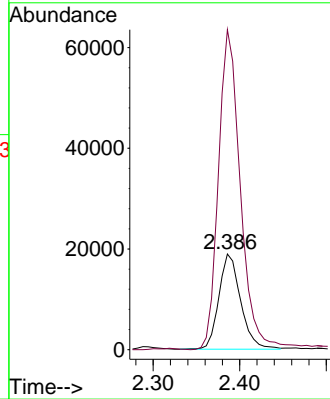
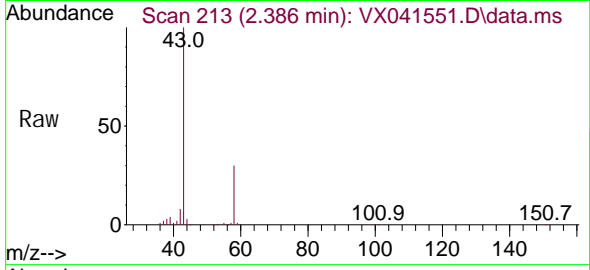




#15
 Acetone
 Concen: 114.180 ug/l
 RT: 2.386 min Scan# 213
 Delta R.T. -0.006 min
 Lab File: VX041551.D
 Acq: 16 May 2024 09:50

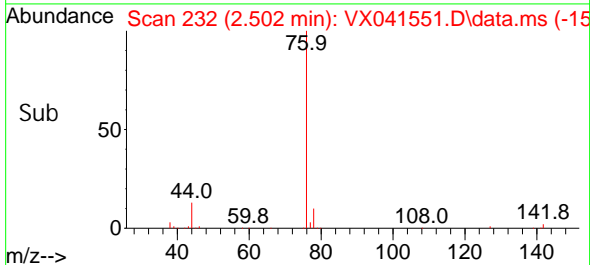
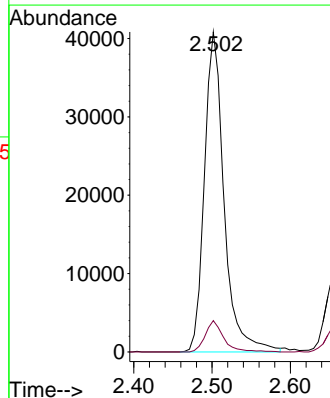
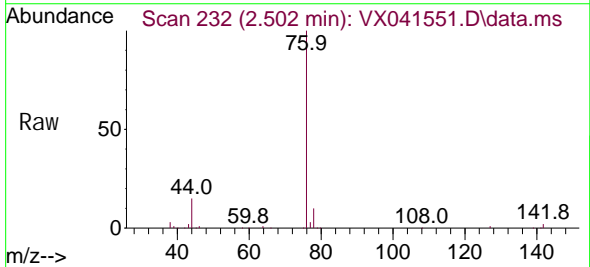
Instrument : MSVOA_X
 ClientSampleId :

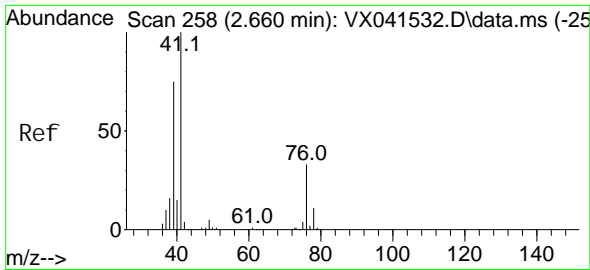
Tgt Ion: 58 Resp: 33109
 Ion Ratio Lower Upper
 58 100
 43 335.4 274.0 411.0



#16
 Carbon Di sul fi de
 Concen: 19.286 ug/l
 RT: 2.502 min Scan# 232
 Delta R.T. 0.000 min
 Lab File: VX041551.D
 Acq: 16 May 2024 09:50

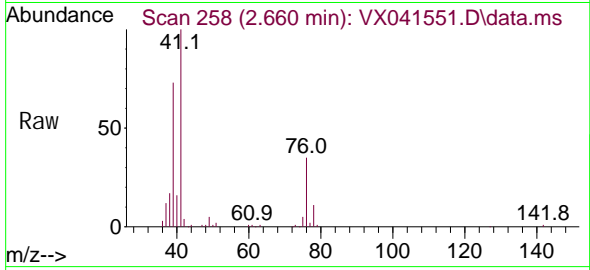
Tgt Ion: 76 Resp: 71172
 Ion Ratio Lower Upper
 76 100
 78 9.8 7.6 11.4



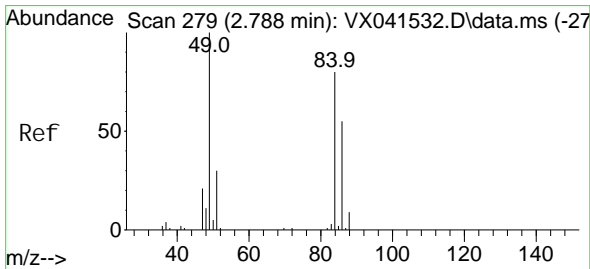
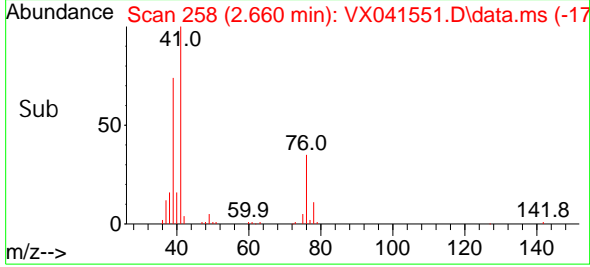
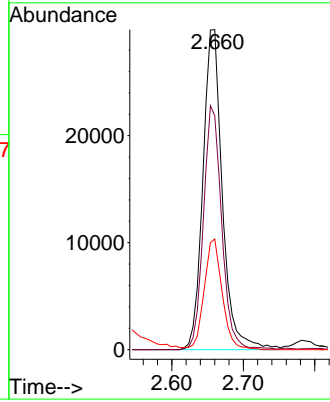


#17
 Allyl chloride
 Concen: 19.579 ug/l
 RT: 2.660 min Scan# 258
 Delta R.T. 0.000 min
 Lab File: VX041551.D
 Acq: 16 May 2024 09:50

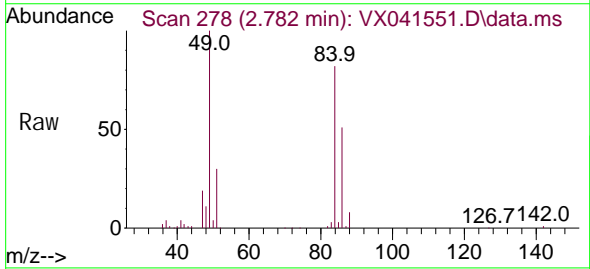
Instrument : MSVOA_X
 ClientSampleId :



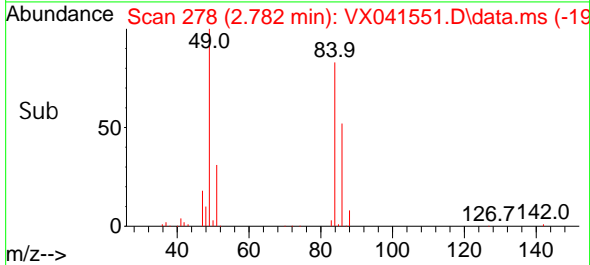
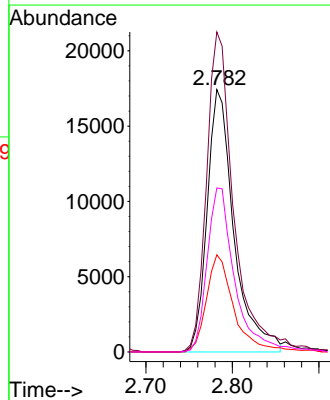
Tgt Ion	Resp	Lower	Upper
41	100		
39	73.1	37.5	112.7
76	34.6	16.6	49.8

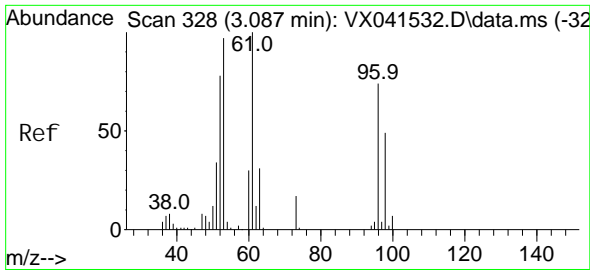


#18
 Methylene Chloride
 Concen: 19.320 ug/l
 RT: 2.782 min Scan# 278
 Delta R.T. -0.006 min
 Lab File: VX041551.D
 Acq: 16 May 2024 09:50



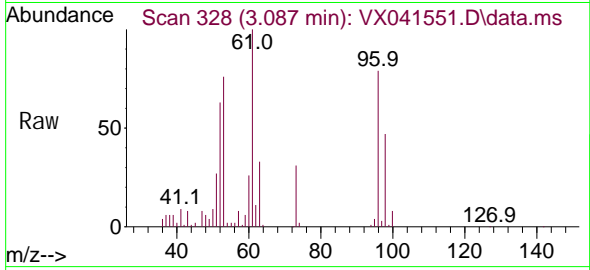
Tgt Ion	Resp	Lower	Upper
84	100		
49	121.9	99.8	149.8
51	37.0	30.2	45.4
86	62.5	54.6	81.8



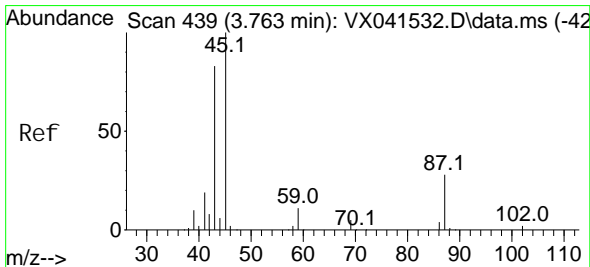
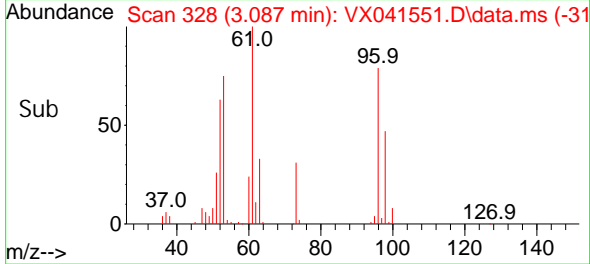
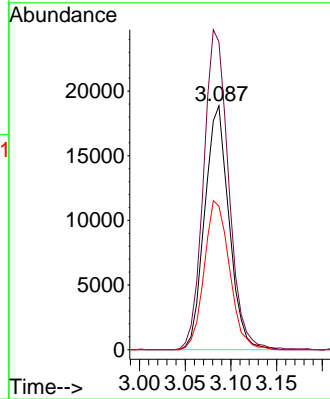


#19
 trans-1, 2-Di chloroethene
 Concen: 18.650 ug/l
 RT: 3.087 min Scan# 311
 Delta R.T. 0.000 min
 Lab File: VX041551.D
 Acq: 16 May 2024 09:50

Instrument : MSVOA_X
 ClientSampleId :

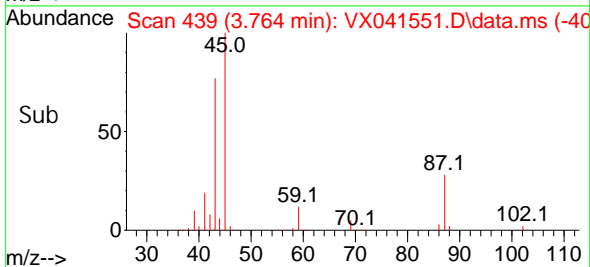
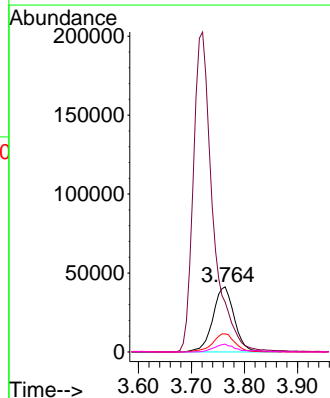
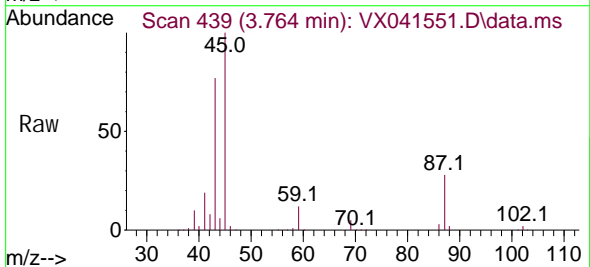


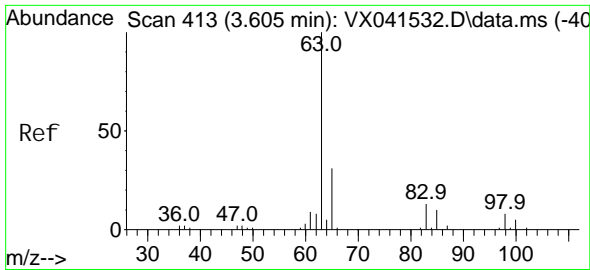
Tgt Ion: 96 Resp: 34954
 Ion Ratio Lower Upper
 96 100
 61 125.7 107.7 161.5
 98 58.9 53.1 79.7



#20
 Diisopropyl ether
 Concen: 18.956 ug/l
 RT: 3.764 min Scan# 439
 Delta R.T. 0.000 min
 Lab File: VX041551.D
 Acq: 16 May 2024 09:50

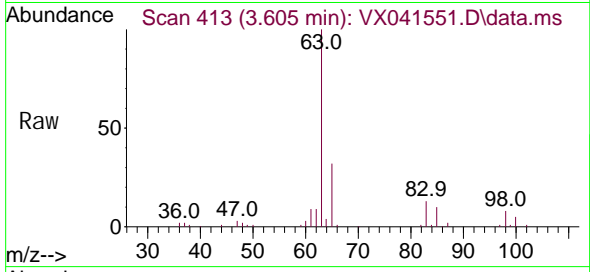
Tgt Ion: 45 Resp: 115520
 Ion Ratio Lower Upper
 45 100
 43 74.5 66.7 100.1
 87 27.8 22.4 33.6
 59 12.0 9.0 13.4



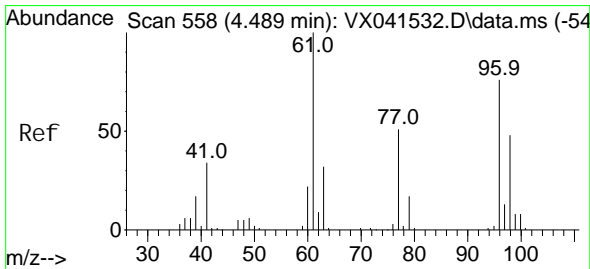
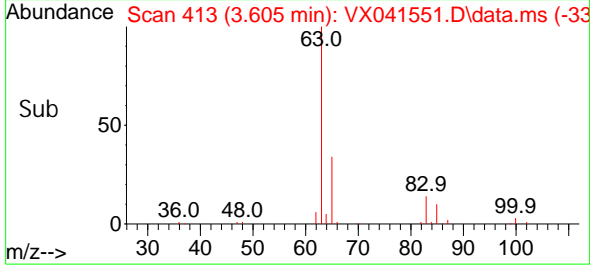
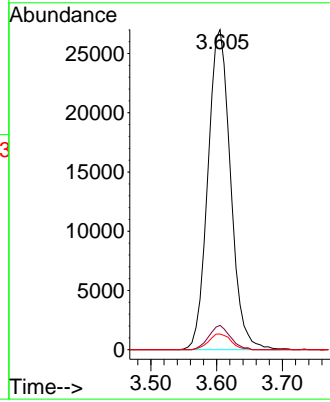


#21
 1,1-Dichloroethane
 Concen: 18.974 ug/l
 RT: 3.605 min Scan# 413
 Delta R.T. 0.000 min
 Lab File: VX041551.D
 Acq: 16 May 2024 09:50

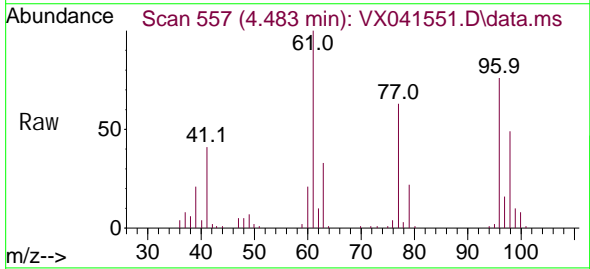
Instrument : MSVOA_X
 ClientSampleId :



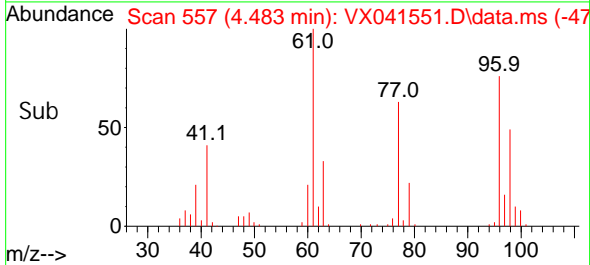
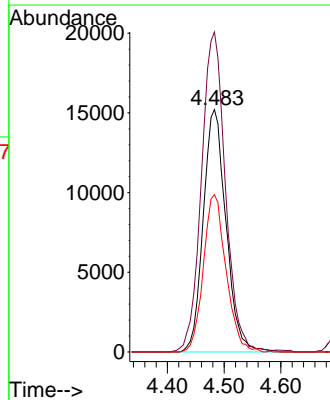
Tgt Ion: 63 Resp: 64898
 Ion Ratio Lower Upper
 63 100
 98 7.6 3.8 11.4
 100 4.9 2.5 7.4

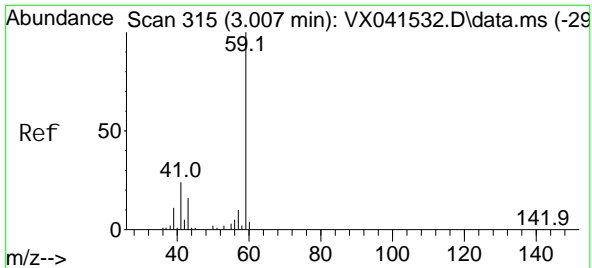


#22
 cis-1,2-Dichloroethene
 Concen: 18.618 ug/l
 RT: 4.483 min Scan# 557
 Delta R.T. -0.006 min
 Lab File: VX041551.D
 Acq: 16 May 2024 09:50



Tgt Ion: 96 Resp: 42401
 Ion Ratio Lower Upper
 96 100
 61 138.4 114.2 171.4
 98 64.3 52.6 79.0

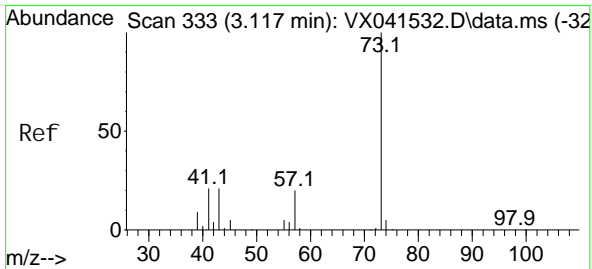
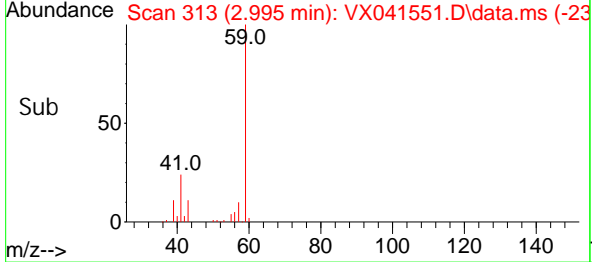
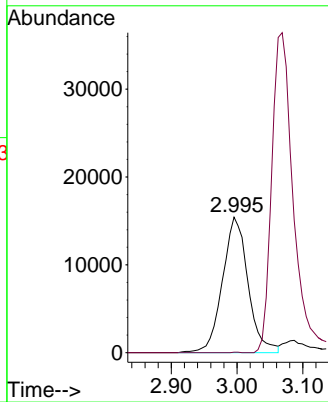
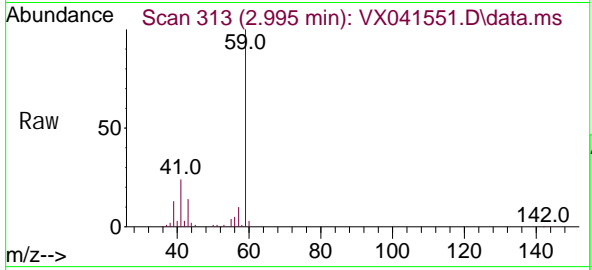




#23
 tert-Butyl Alcohol
 Concen: 91.106 ug/l
 RT: 2.995 min Scan# 315
 Delta R.T. -0.012 min
 Lab File: VX041551.D
 Acq: 16 May 2024 09:50

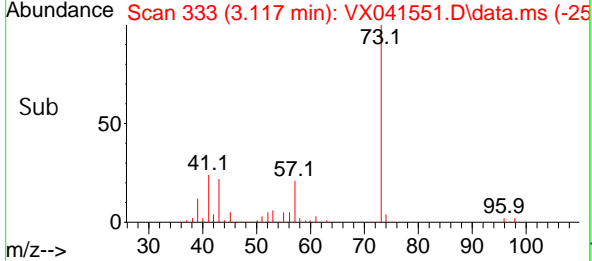
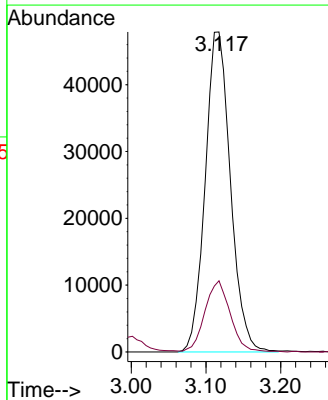
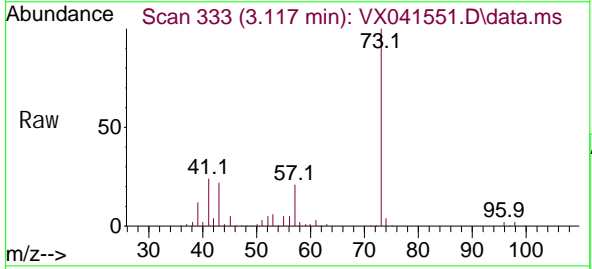
Instrument : MSVOA_X
 ClientSampleId :

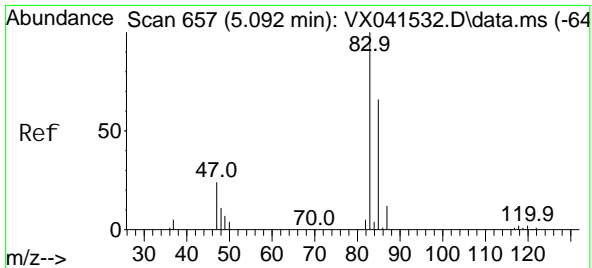
Tgt Ion: 59 Resp: 41843
 Ion Ratio Lower Upper
 59 100
 52 0.1 0.0 0.0#



#24
 Methyl tert-Butyl Ether
 Concen: 18.425 ug/l
 RT: 3.117 min Scan# 333
 Delta R.T. 0.000 min
 Lab File: VX041551.D
 Acq: 16 May 2024 09:50

Tgt Ion: 73 Resp: 112428
 Ion Ratio Lower Upper
 73 100
 43 22.3 17.2 25.8

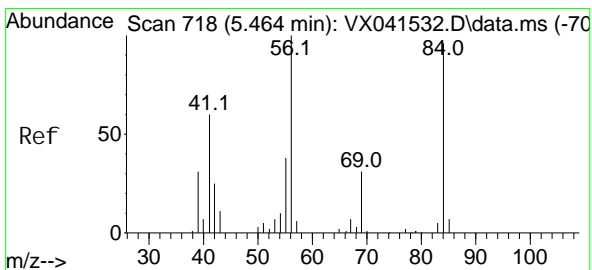
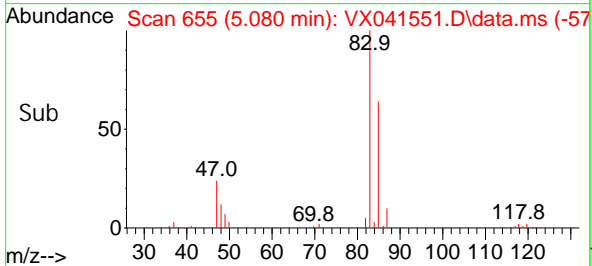
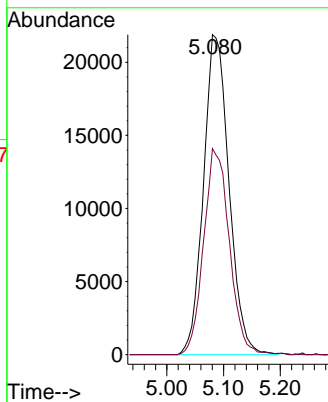
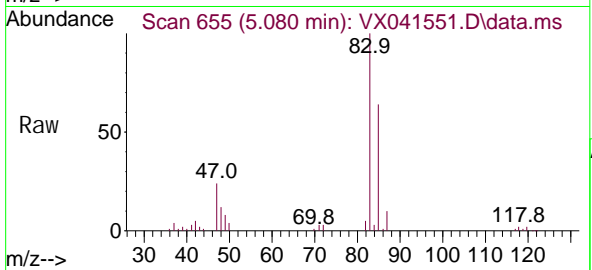




#25
 Chloroform
 Concen: 18.791 ug/l
 RT: 5.080 min Scan# 604
 Delta R.T. -0.012 min
 Lab File: VX041551.D
 Acq: 16 May 2024 09:50

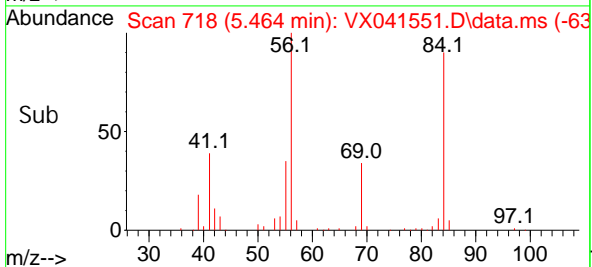
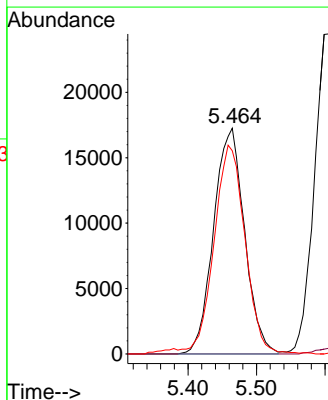
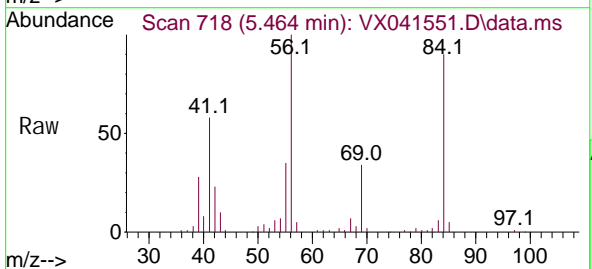
Instrument :
 MSVOA_X
 ClientSampleId :

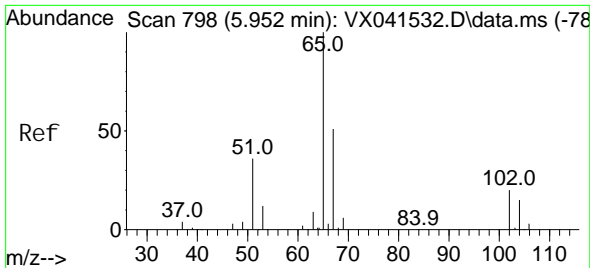
Tgt Ion: 83 Resp: 68467
 Ion Ratio Lower Upper
 83 100
 85 64.4 52.9 79.3



#26
 Cyclohexane
 Concen: 18.932 ug/l
 RT: 5.464 min Scan# 718
 Delta R.T. 0.000 min
 Lab File: VX041551.D
 Acq: 16 May 2024 09:50

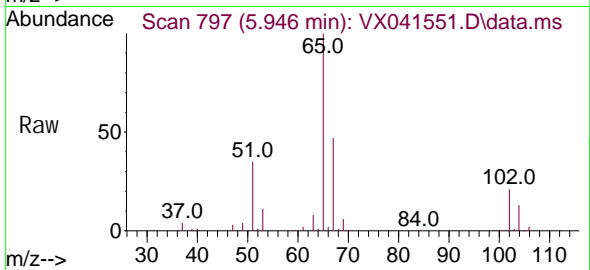
Tgt Ion: 56 Resp: 53999
 Ion Ratio Lower Upper
 56 100
 89 0.0 0.0 0.0
 84 92.2 74.0 111.0



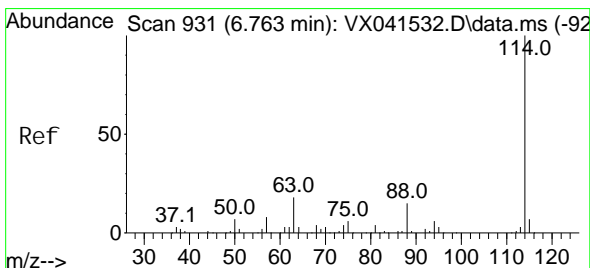
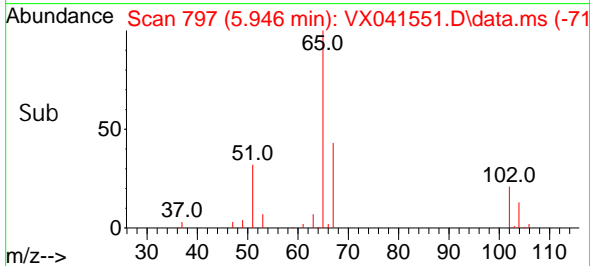
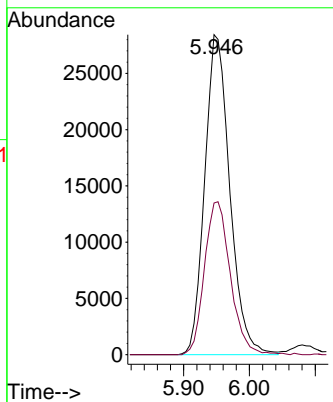


#27
 1, 2-Di chloroethane-d4
 Concen: 29.999 ug/l
 RT: 5.946 min Scan# 798
 Delta R.T. -0.006 min
 Lab File: VX041551.D
 Acq: 16 May 2024 09:50

Instrument : MSVOA_X
 ClientSampleId :

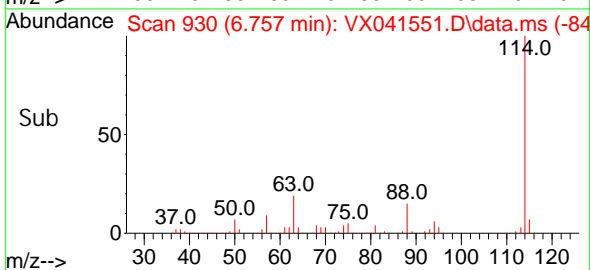
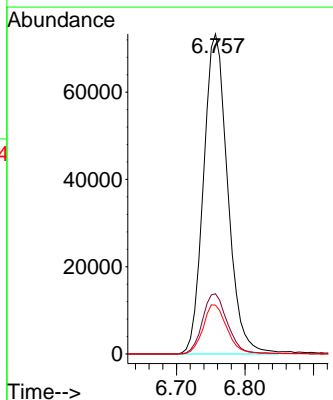
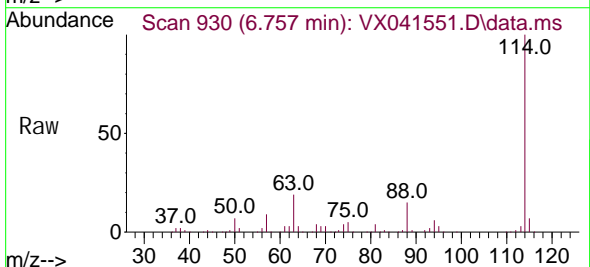


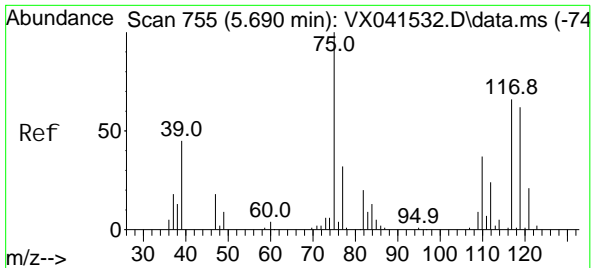
Tgt Ion: 65 Resp: 75469
 Ion Ratio Lower Upper
 65 100
 67 49.4 40.8 61.2



#28
 1, 4-Di fluorobenzene
 Concen: 30.000 ug/l
 RT: 6.757 min Scan# 930
 Delta R.T. -0.006 min
 Lab File: VX041551.D
 Acq: 16 May 2024 09:50

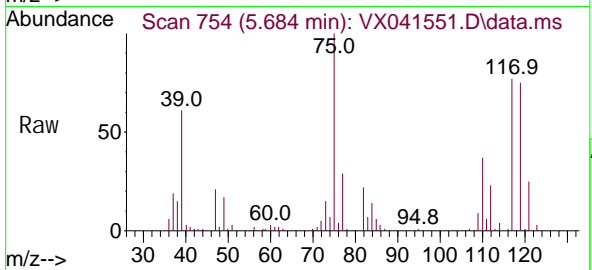
Tgt Ion: 114 Resp: 179505
 Ion Ratio Lower Upper
 114 100
 63 19.5 15.4 23.0
 88 15.3 12.2 18.2





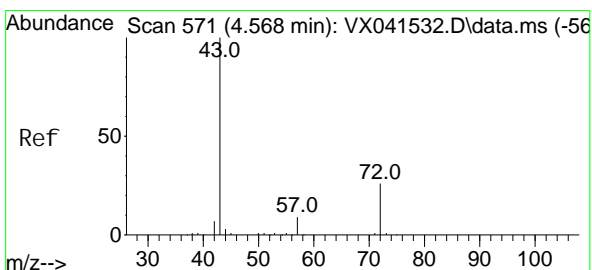
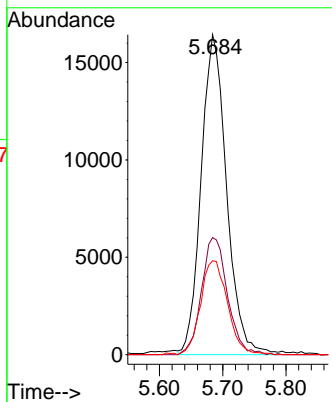
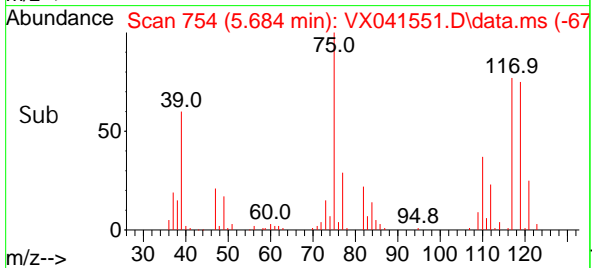
#29
 1,1-Dichloropropene
 Concen: 19.381 ug/l
 RT: 5.684 min Scan# 755
 Delta R.T. -0.006 min
 Lab File: VX041551.D
 Acq: 16 May 2024 09:50

Instrument : MSVOA_X
 Client Sample Id :

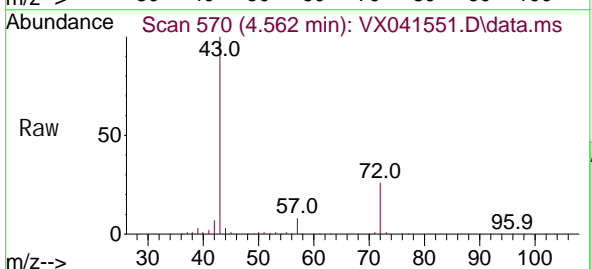


Tgt Ion: 75 Resp: 46021

Ion	Ratio	Lower	Upper
75	100		
110	37.2	0.0	74.4
77	31.0	0.0	62.6

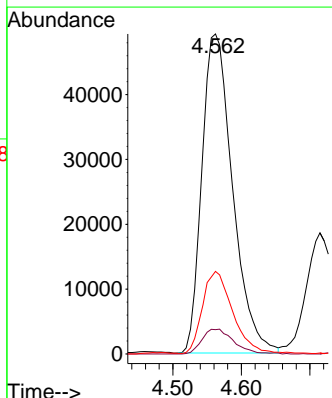
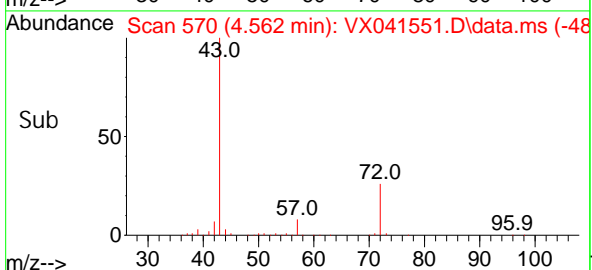


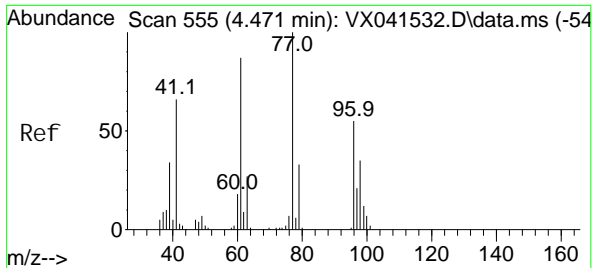
#30
 2-Butanone
 Concen: 97.473 ug/l
 RT: 4.562 min Scan# 570
 Delta R.T. -0.006 min
 Lab File: VX041551.D
 Acq: 16 May 2024 09:50



Tgt Ion: 43 Resp: 153627

Ion	Ratio	Lower	Upper
43	100		
57	7.9	6.6	10.0
72	25.1	20.7	31.1

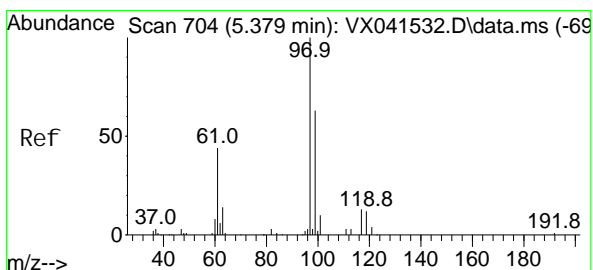
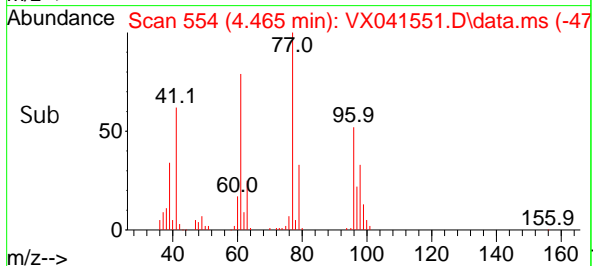
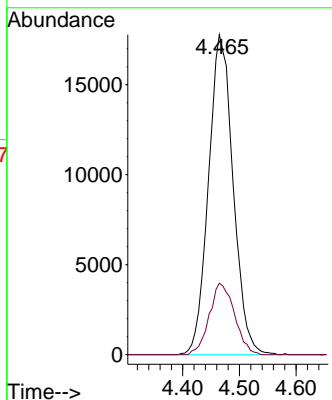
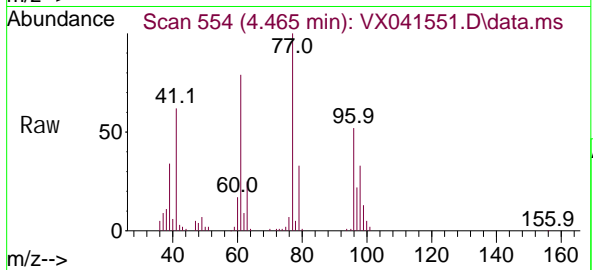




#31
 2, 2-Di chloropropane
 Concen: 19.238 ug/l
 RT: 4.465 min Scan# 51
 Delta R.T. -0.006 min
 Lab File: VX041551.D
 Acq: 16 May 2024 09:50

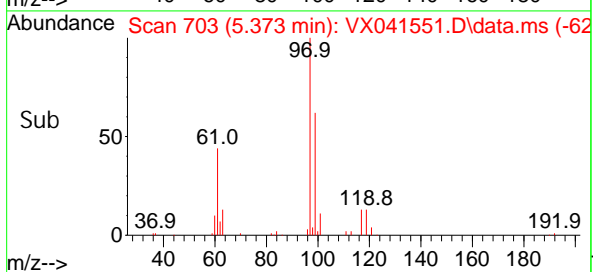
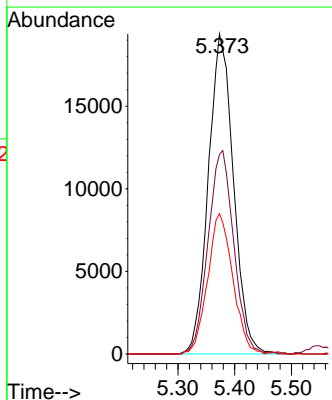
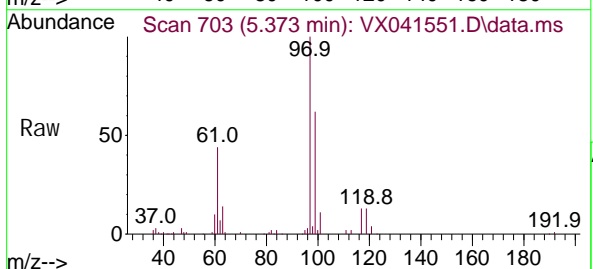
Instrument :
 MSVOA_X
 ClientSampleId :

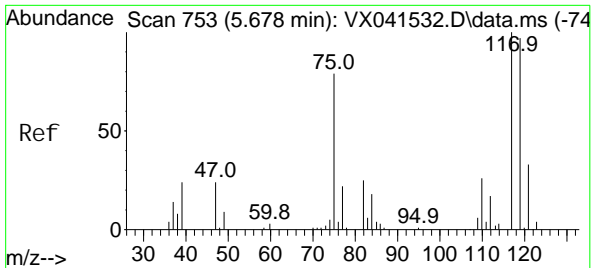
Tgt Ion: 77 Resp: 53614
 Ion Ratio Lower Upper
 77 100
 97 22.8 18.0 27.0



#32
 1, 1, 1-Tri chloroethane
 Concen: 18.751 ug/l
 RT: 5.373 min Scan# 703
 Delta R.T. -0.006 min
 Lab File: VX041551.D
 Acq: 16 May 2024 09:50

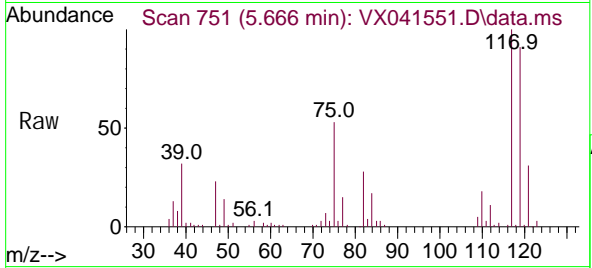
Tgt Ion: 97 Resp: 59743
 Ion Ratio Lower Upper
 97 100
 99 65.0 50.7 76.1
 61 43.8 34.6 51.8



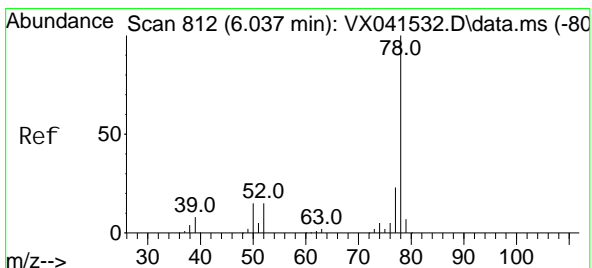
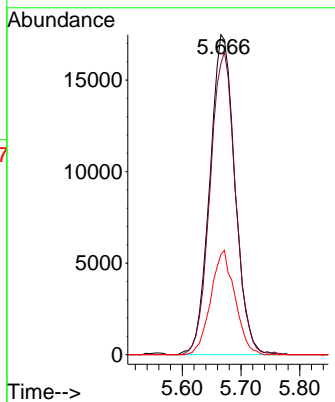
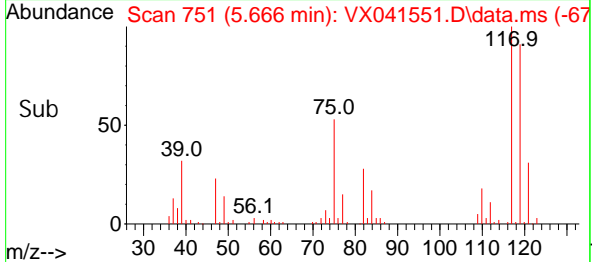


#33
 Carbon Tetrachloride
 Concen: 19.044 ug/l
 RT: 5.666 min Scan# 751
 Delta R.T. -0.012 min
 Lab File: VX041551.D
 Acq: 16 May 2024 09:50

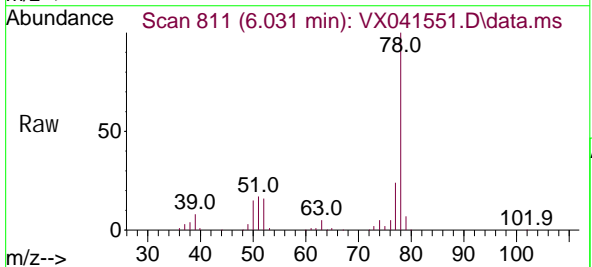
Instrument : MSVOA_X
 ClientSampleId :



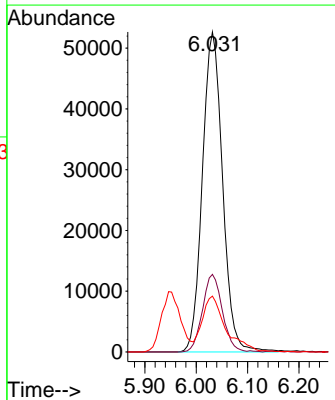
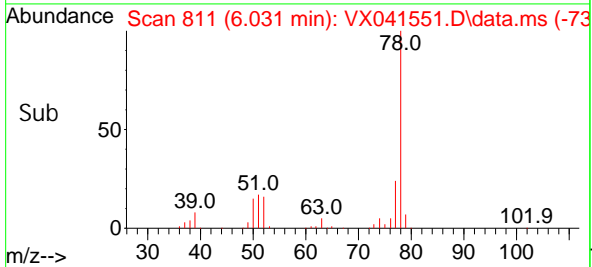
Tgt Ion: 117 Resp: 51917
 Ion Ratio Lower Upper
 117 100
 119 91.0 77.4 116.2
 121 31.3 26.4 39.6

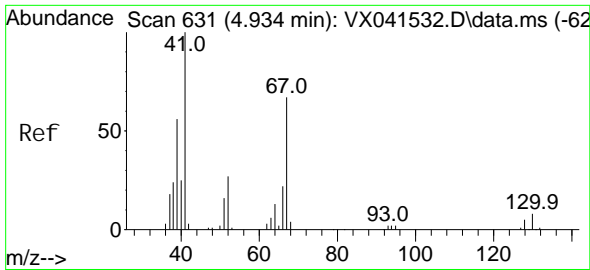


#34
 Benzene
 Concen: 19.165 ug/l
 RT: 6.031 min Scan# 811
 Delta R.T. -0.006 min
 Lab File: VX041551.D
 Acq: 16 May 2024 09:50



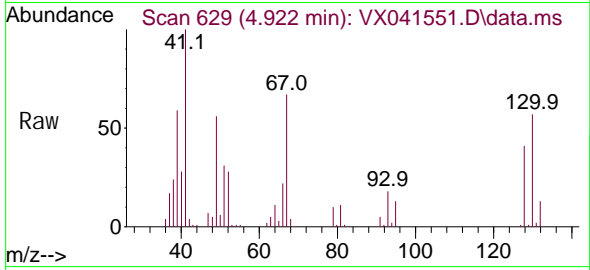
Tgt Ion: 78 Resp: 143719
 Ion Ratio Lower Upper
 78 100
 77 24.2 18.6 28.0
 51 17.3 12.4 18.6



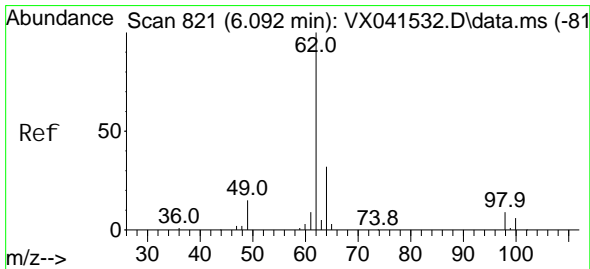
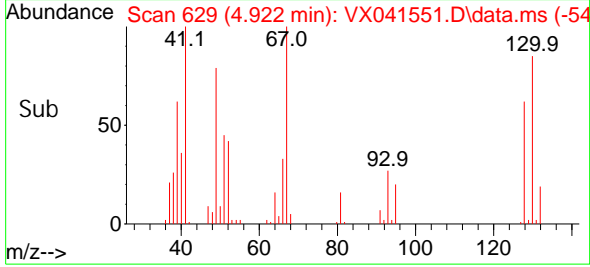
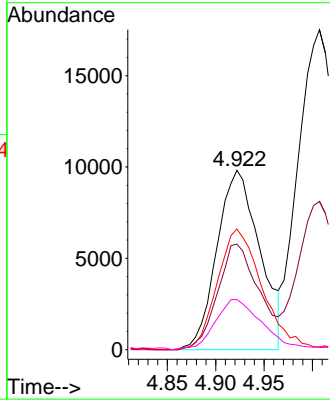


#35
 Methacrylonitrile
 Concen: 19.033 ug/l
 RT: 4.922 min Scan# 619
 Delta R.T. -0.012 min
 Lab File: VX041551.D
 Acq: 16 May 2024 09:50

Instrument : MSVOA_X
 Client SampleId :

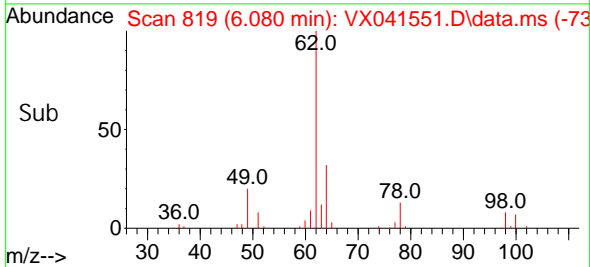
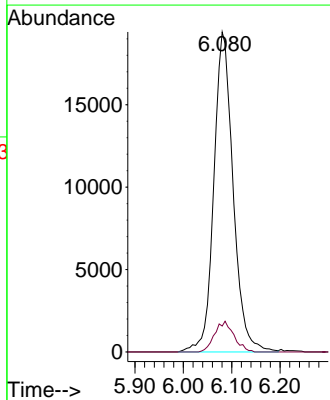
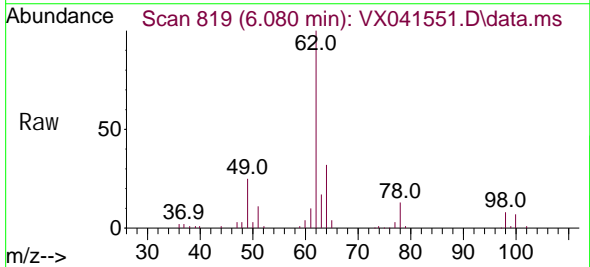


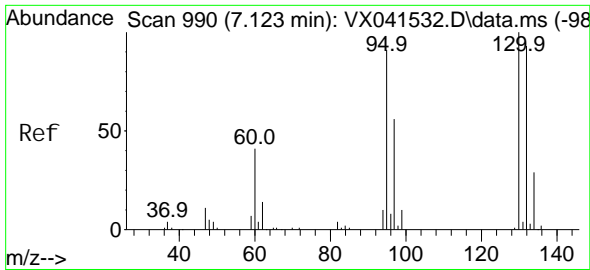
Tgt Ion: 41 Resp: 30260
 Ion Ratio Lower Upper
 41 100
 39 58.9 28.1 84.4
 67 67.3 33.7 101.1
 52 27.4 13.6 40.8



#36
 1,2-Dichloroethane
 Concen: 19.240 ug/l
 RT: 6.080 min Scan# 819
 Delta R.T. -0.012 min
 Lab File: VX041551.D
 Acq: 16 May 2024 09:50

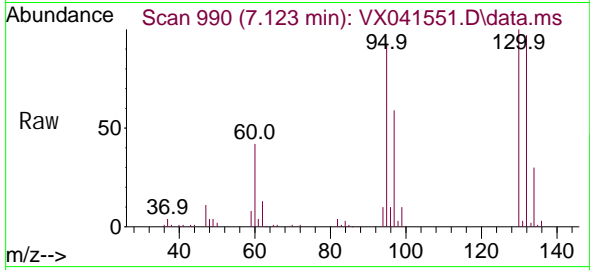
Tgt Ion: 62 Resp: 53842
 Ion Ratio Lower Upper
 62 100
 98 9.6 7.4 11.0



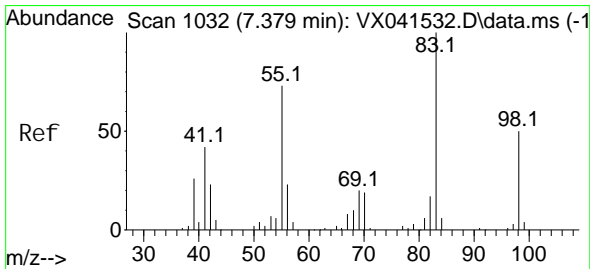
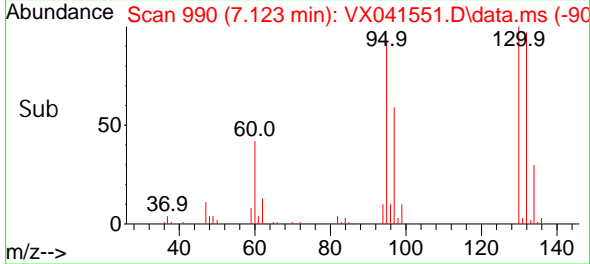
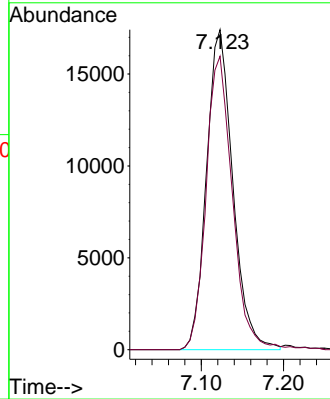


#37
 Trichloroethene
 Concen: 18.570 ug/l
 RT: 7.123 min Scan# 990
 Delta R.T. 0.000 min
 Lab File: VX041551.D
 Acq: 16 May 2024 09:50

Instrument :
 MSVOA_X
 ClientSampleId :

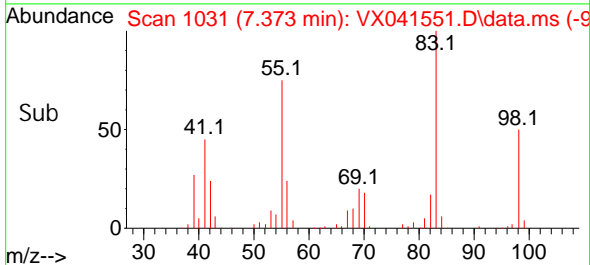
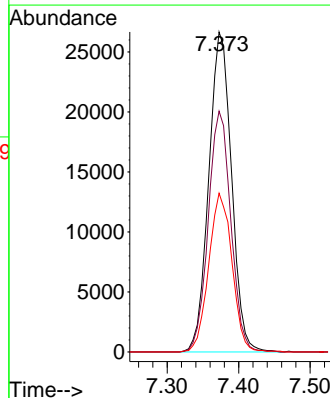
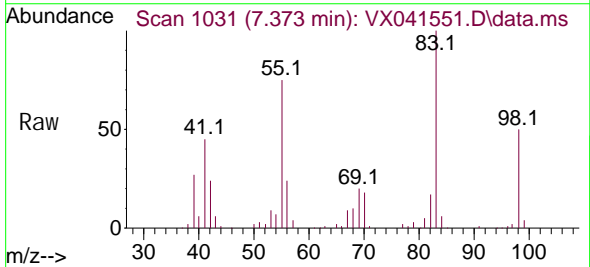


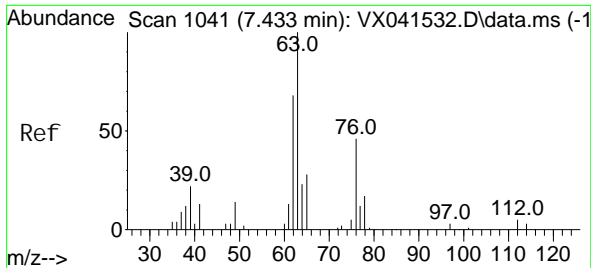
Tgt Ion: 130 Resp: 38801
 Ion Ratio Lower Upper
 130 100
 95 91.7 72.6 108.8



#38
 Methyl cycl ohexane
 Concen: 19.536 ug/l
 RT: 7.373 min Scan# 1031
 Delta R.T. -0.006 min
 Lab File: VX041551.D
 Acq: 16 May 2024 09:50

Tgt Ion: 83 Resp: 58900
 Ion Ratio Lower Upper
 83 100
 55 74.9 37.7 113.1
 98 50.7 25.1 75.3

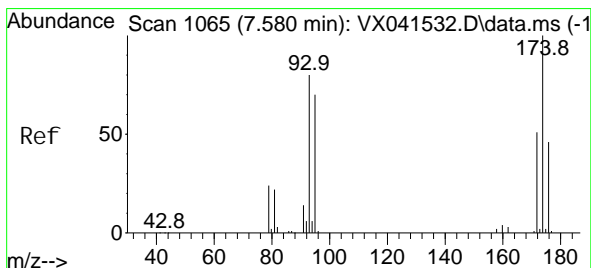
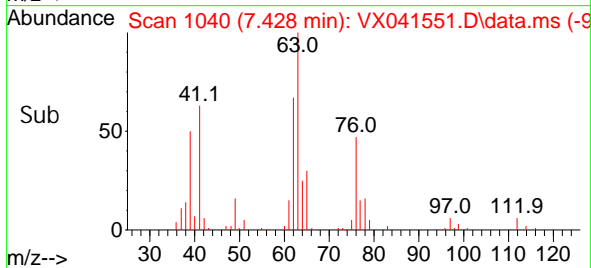
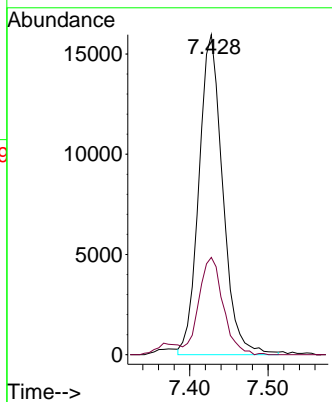
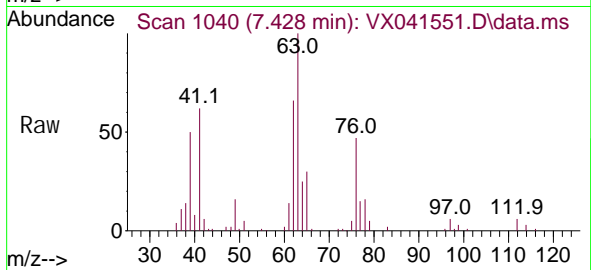




#39
 1, 2-Di chl oropropane
 Concen: 19.060 ug/l
 RT: 7.428 min Scan# 1040
 Delta R.T. -0.006 min
 Lab File: VX041551.D
 Acq: 16 May 2024 09:50

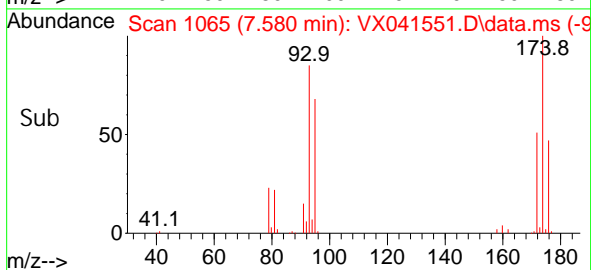
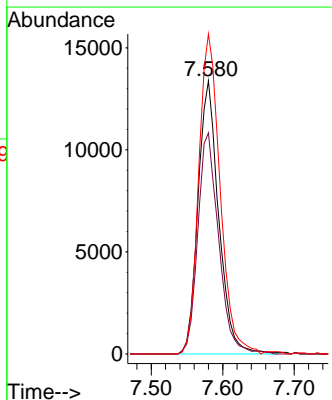
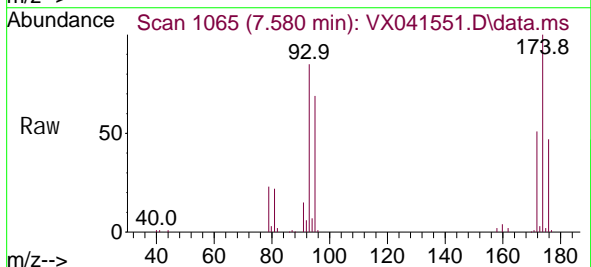
Instrument : MSVOA_X
 ClientSampleId :

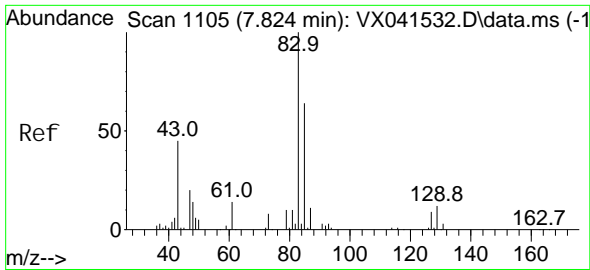
Tgt Ion: 63 Resp: 33788
 Ion Ratio Lower Upper
 63 100
 65 30.6 24.2 36.2



#40
 Di bromomethane
 Concen: 19.255 ug/l
 RT: 7.580 min Scan# 1065
 Delta R.T. 0.000 min
 Lab File: VX041551.D
 Acq: 16 May 2024 09:50

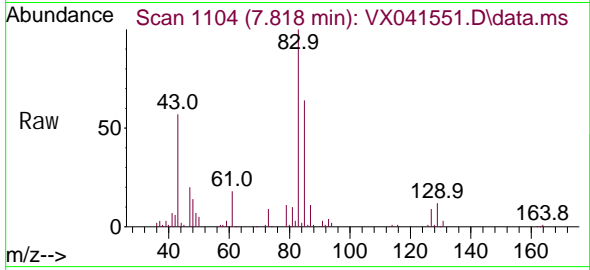
Tgt Ion: 93 Resp: 26864
 Ion Ratio Lower Upper
 93 100
 95 81.0 0.0 168.6
 174 120.8 0.0 249.8



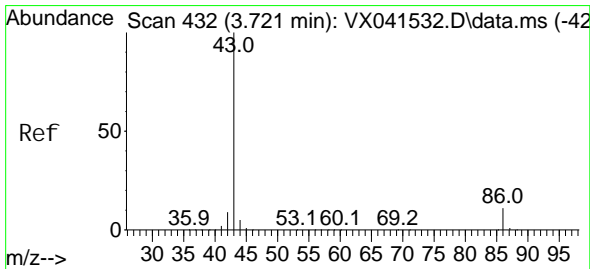
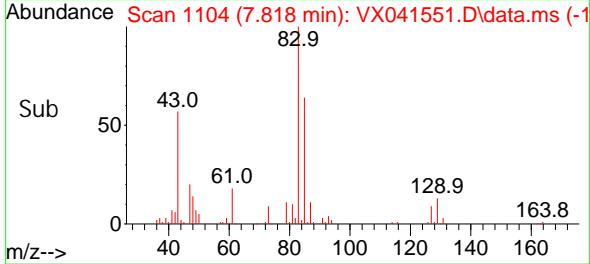
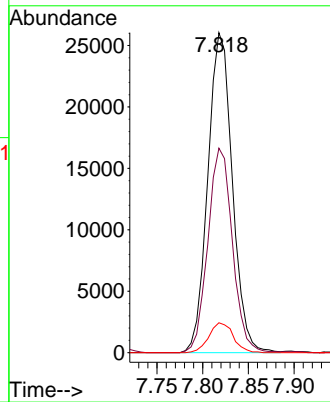


#41
 Bromodi chloromethane
 Concen: 18.566 ug/l
 RT: 7.818 min Scan# 1104
 Delta R.T. -0.006 min
 Lab File: VX041551.D
 Acq: 16 May 2024 09:50

Instrument : MSVOA_X
 ClientSampleId :

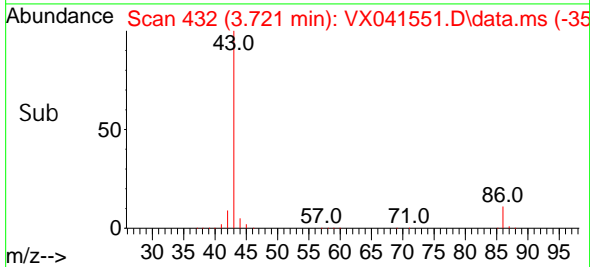
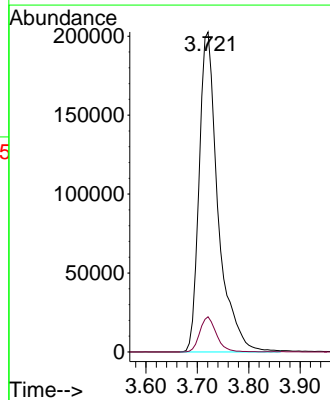
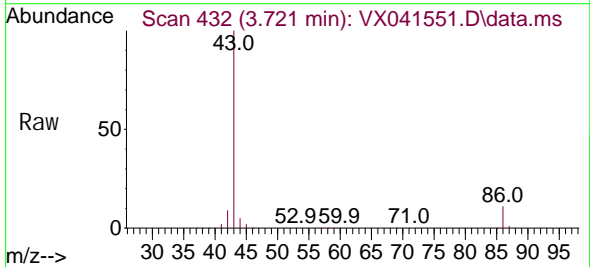


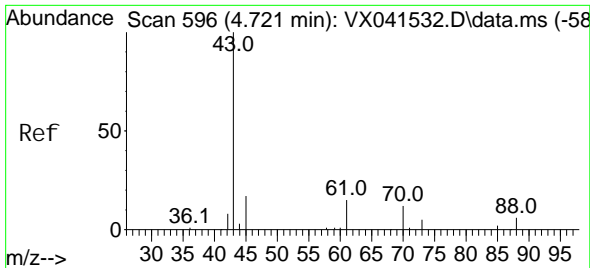
Tgt Ion: 83 Resp: 48630
 Ion Ratio Lower Upper
 83 100
 85 63.9 51.0 76.4
 127 9.4 7.1 10.7



#42
 Vinyl Acetate
 Concen: 94.907 ug/l
 RT: 3.721 min Scan# 432
 Delta R.T. 0.000 min
 Lab File: VX041551.D
 Acq: 16 May 2024 09:50

Tgt Ion: 43 Resp: 518983
 Ion Ratio Lower Upper
 43 100
 86 9.6 7.8 11.6

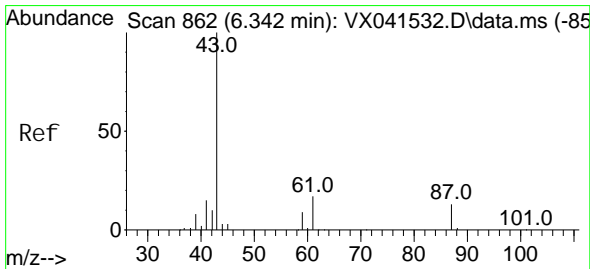
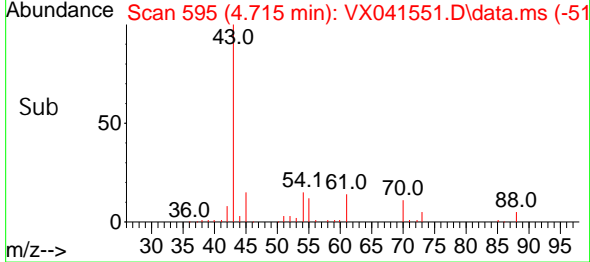
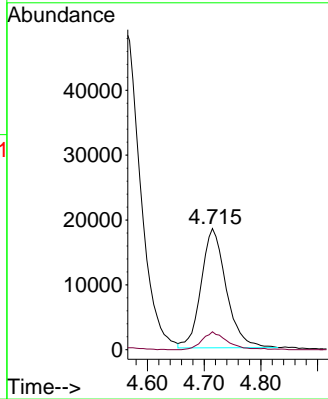
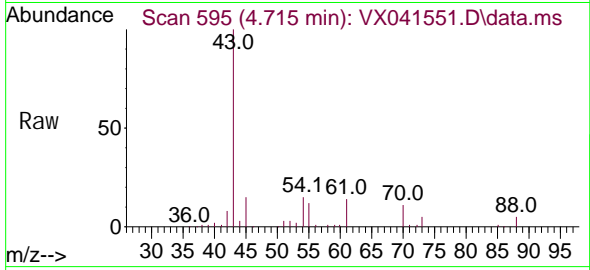




#43
 Ethyl Acetate
 Concen: 18.556 ug/l
 RT: 4.715 min Scan# 596
 Delta R.T. -0.006 min
 Lab File: VX041551.D
 Acq: 16 May 2024 09:50

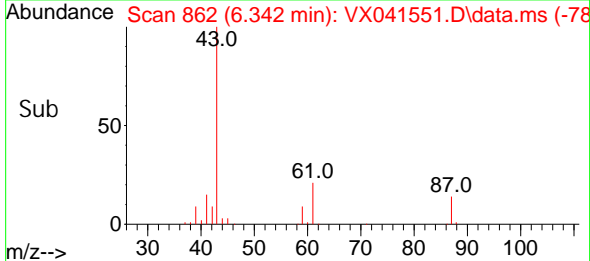
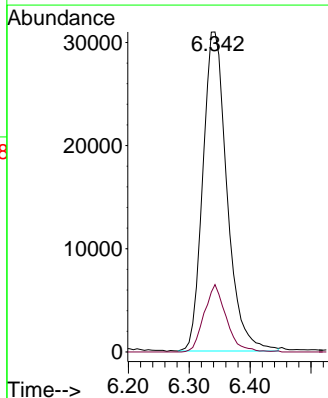
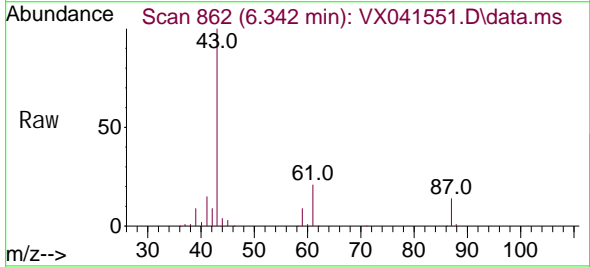
Instrument : MSVOA_X
 ClientSampleId :

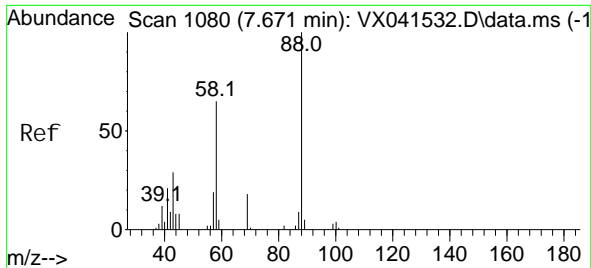
Tgt Ion: 43 Resp: 56431
 Ion Ratio Lower Upper
 43 100
 45 14.5 11.9 17.9



#44
 Isopropyl Acetate
 Concen: 18.542 ug/l
 RT: 6.342 min Scan# 862
 Delta R.T. 0.000 min
 Lab File: VX041551.D
 Acq: 16 May 2024 09:50

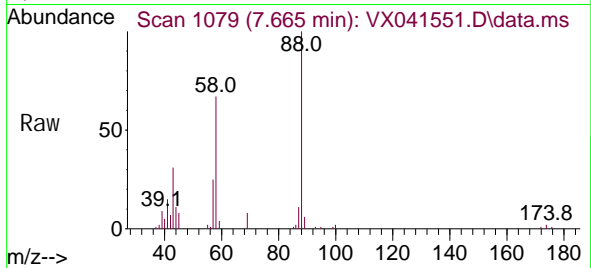
Tgt Ion: 43 Resp: 85236
 Ion Ratio Lower Upper
 43 100
 61 19.4 15.3 22.9



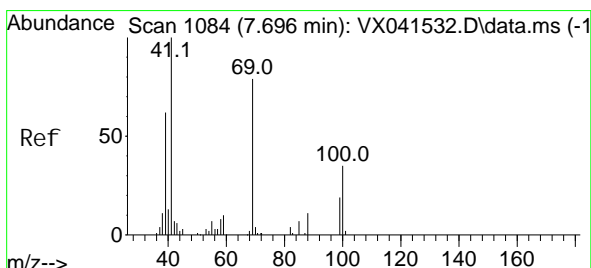
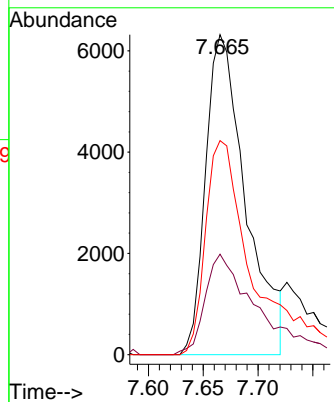
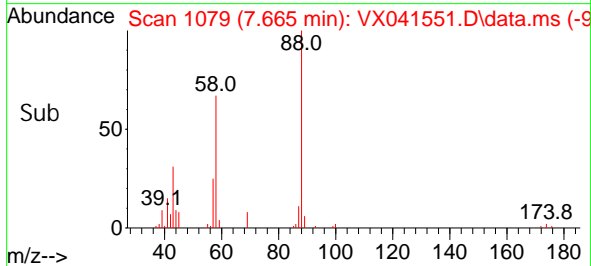


#45
 1, 4-Di oxane
 Concen: 311.440 ug/l
 RT: 7.665 min Scan# 1080
 Delta R.T. -0.006 min
 Lab File: VX041551.D
 Acq: 16 May 2024 09:50

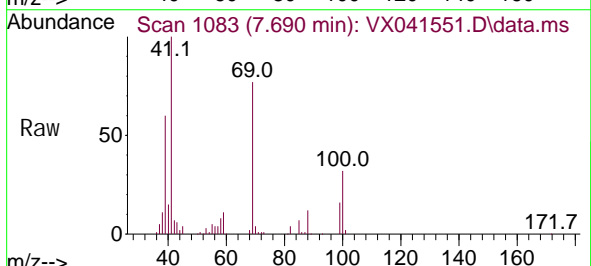
Instrument : MSVOA_X
 ClientSampleId :



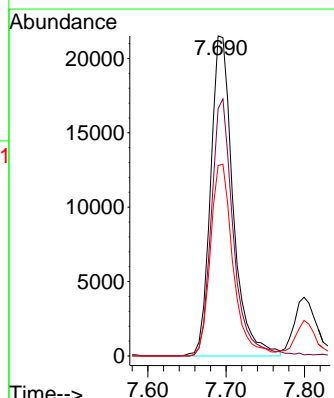
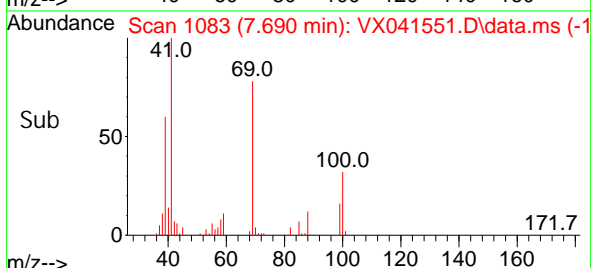
Tgt Ion: 88 Resp: 16146
 Ion Ratio Lower Upper
 88 100
 43 34.0 24.9 37.3
 58 79.0 47.0 70.4#

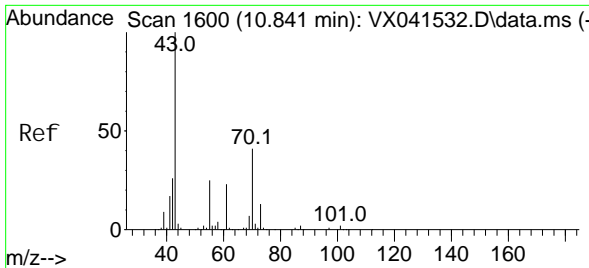


#46
 Methyl methacrylate
 Concen: 18.741 ug/l
 RT: 7.690 min Scan# 1083
 Delta R.T. -0.006 min
 Lab File: VX041551.D
 Acq: 16 May 2024 09:50



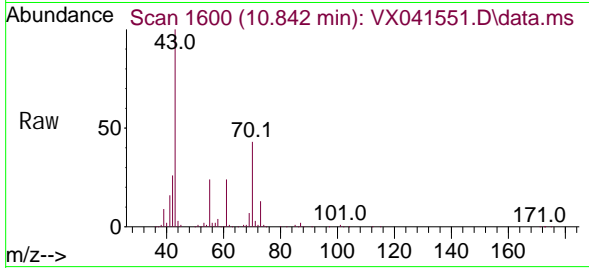
Tgt Ion: 41 Resp: 42865
 Ion Ratio Lower Upper
 41 100
 69 77.3 39.6 119.0
 39 59.5 30.9 92.8



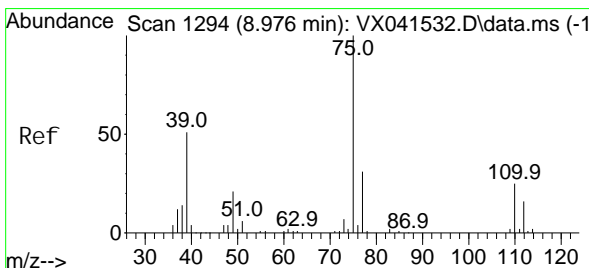
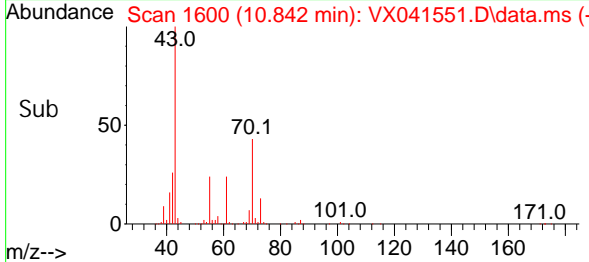
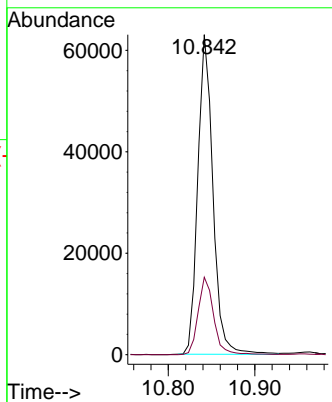


#47
 n-aml Acetate
 Concen: 18.357 ug/l
 RT: 10.842 min Scan# 1600
 Delta R.T. 0.000 min
 Lab File: VX041551.D
 Acq: 16 May 2024 09:50

Instrument : MSVOA_X
 ClientSampleId :

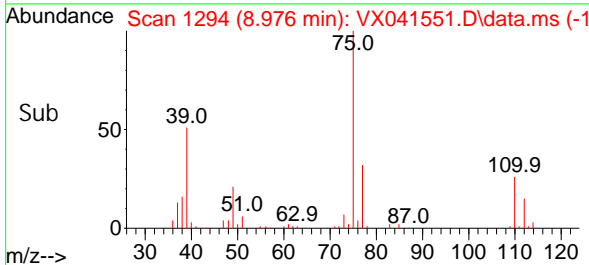
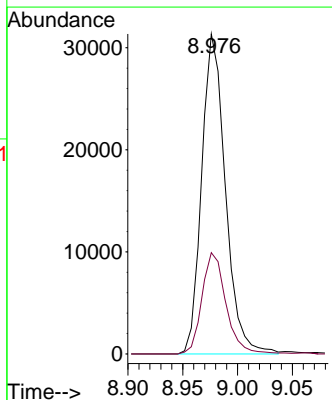
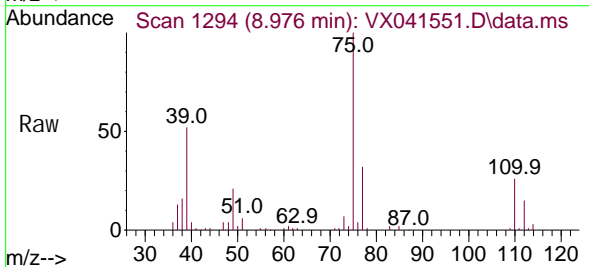


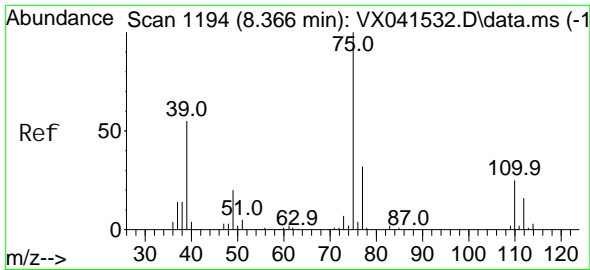
Tgt Ion: 43 Resp: 76523
 Ion Ratio Lower Upper
 43 100
 55 25.0 19.4 29.0



#48
 t-1,3-Di chl oropropene
 Concen: 17.958 ug/l
 RT: 8.976 min Scan# 1294
 Delta R.T. 0.000 min
 Lab File: VX041551.D
 Acq: 16 May 2024 09:50

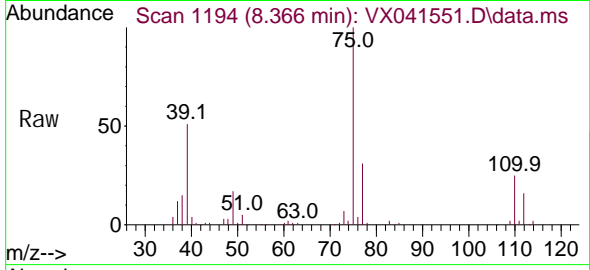
Tgt Ion: 75 Resp: 47237
 Ion Ratio Lower Upper
 75 100
 77 31.7 24.5 36.7



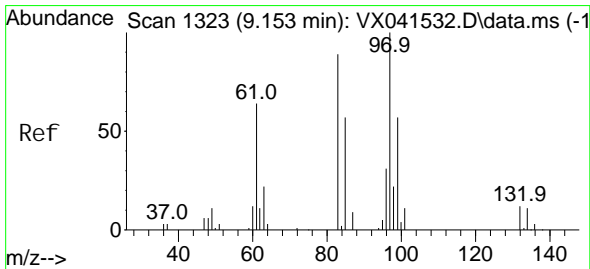
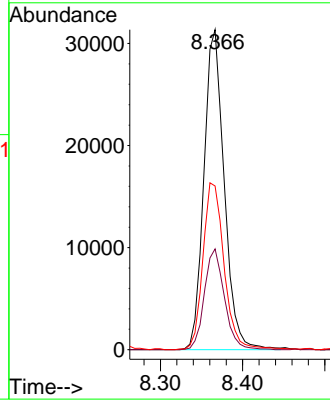
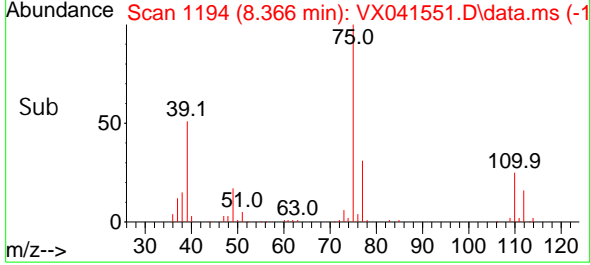


#49
 ci s-1, 3-Di chl oropropene
 Concen: 18.884 ug/l
 RT: 8.366 min Scan# 1194
 Delta R.T. 0.000 min
 Lab File: VX041551.D
 Acq: 16 May 2024 09:50

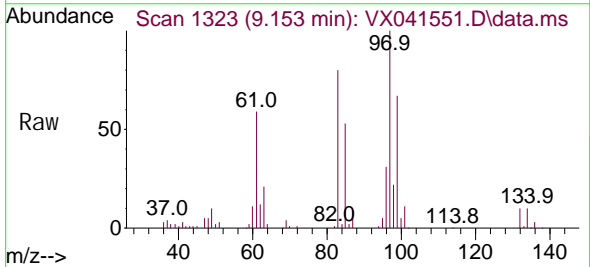
Instrument : MSVOA_X
 ClientSampleId :



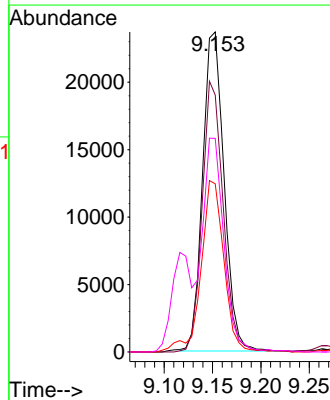
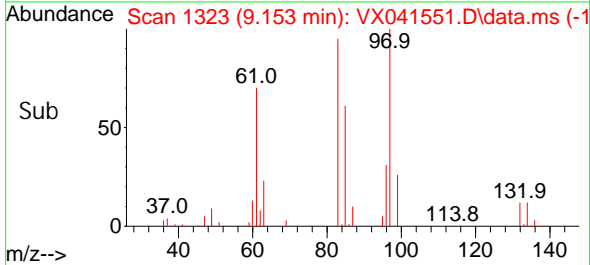
Tgt Ion: 75 Resp: 53801
 Ion Ratio Lower Upper
 75 100
 77 31.5 25.8 38.8
 39 50.9 43.6 65.4

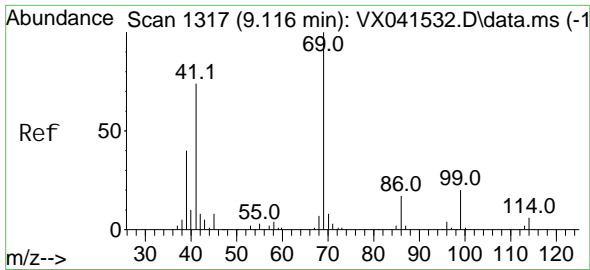


#50
 1, 1, 2-Tri chloroethane
 Concen: 18.827 ug/l
 RT: 9.153 min Scan# 1323
 Delta R.T. 0.000 min
 Lab File: VX041551.D
 Acq: 16 May 2024 09:50



Tgt Ion: 97 Resp: 36541
 Ion Ratio Lower Upper
 97 100
 83 80.2 71.3 106.9
 85 52.3 45.7 68.5
 99 66.5 50.9 76.3

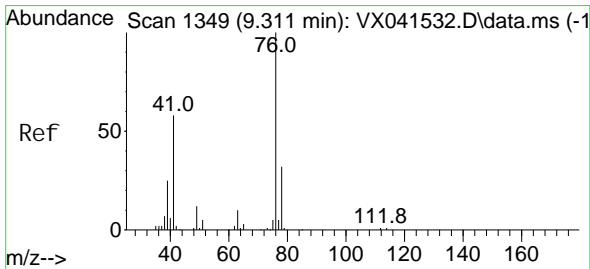
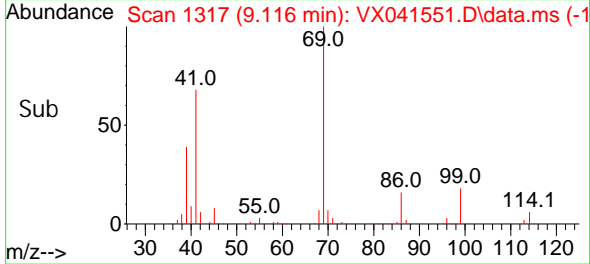
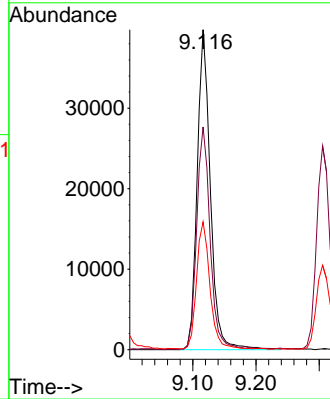
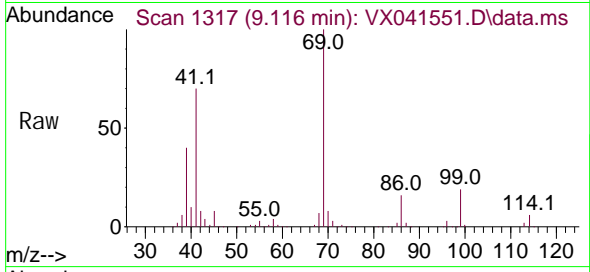




#51
 Ethyl methacrylate
 Concen: 18.487 ug/l
 RT: 9.116 min Scan# 11
 Delta R.T. 0.000 min
 Lab File: VX041551.D
 Acq: 16 May 2024 09:50

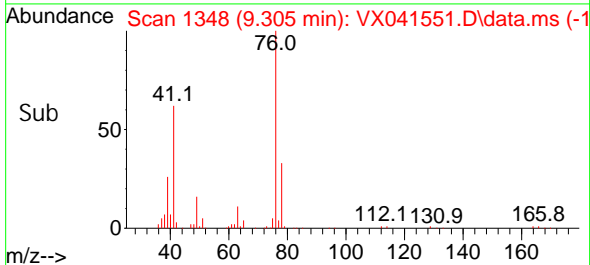
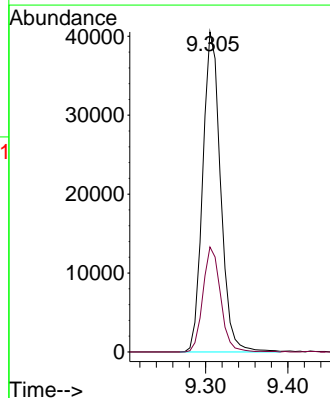
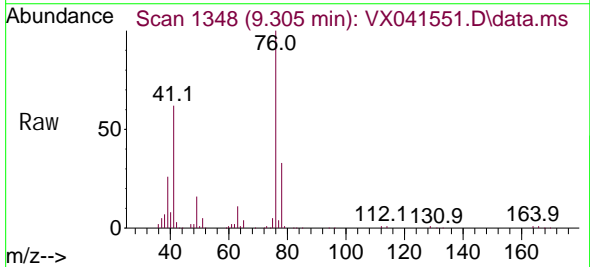
Instrument :
 MSVOA_X
 ClientSampleId :

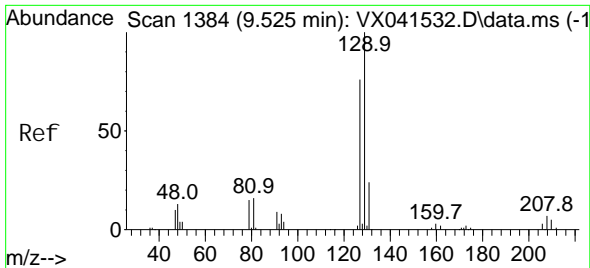
Tgt Ion: 69 Resp: 57752
 Ion Ratio Lower Upper
 69 100
 41 69.4 37.1 111.3
 39 39.7 20.2 60.6



#52
 1,3-Dichloropropane
 Concen: 19.089 ug/l
 RT: 9.305 min Scan# 1348
 Delta R.T. -0.006 min
 Lab File: VX041551.D
 Acq: 16 May 2024 09:50

Tgt Ion: 76 Resp: 61220
 Ion Ratio Lower Upper
 76 100
 78 32.2 0.0 64.4

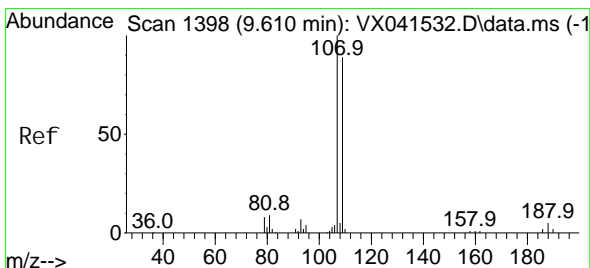
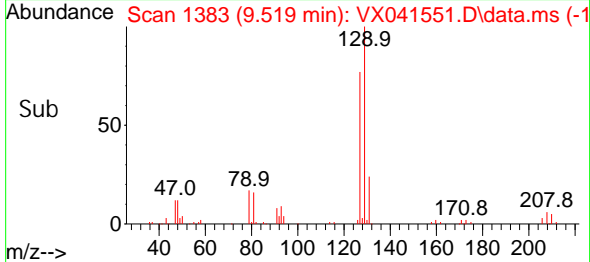
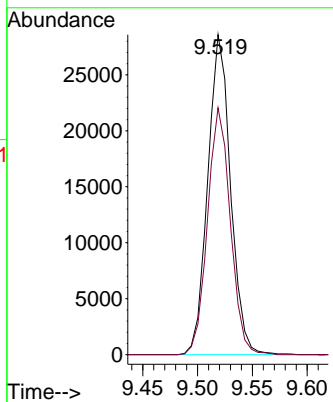
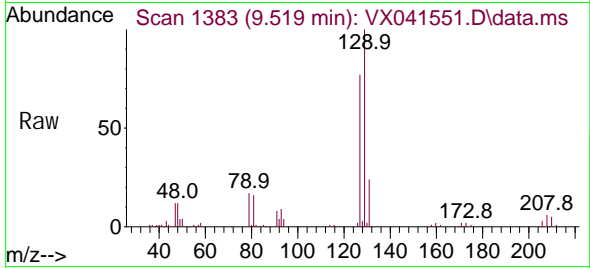




#53
 Di bromochloromethane
 Concen: 18.681 ug/l
 RT: 9.519 min Scan# 1383
 Delta R.T. -0.006 min
 Lab File: VX041551.D
 Acq: 16 May 2024 09:50

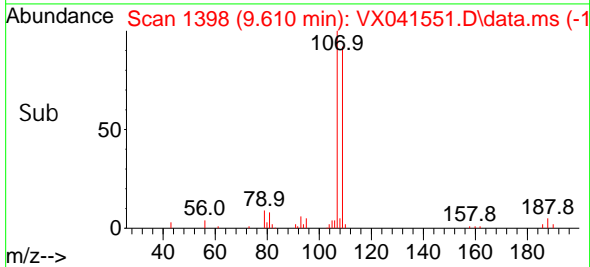
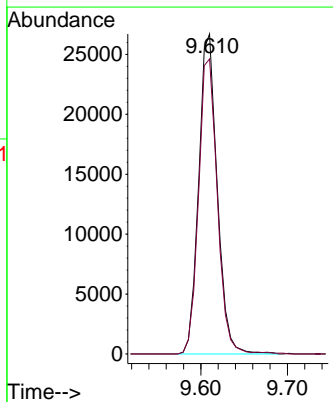
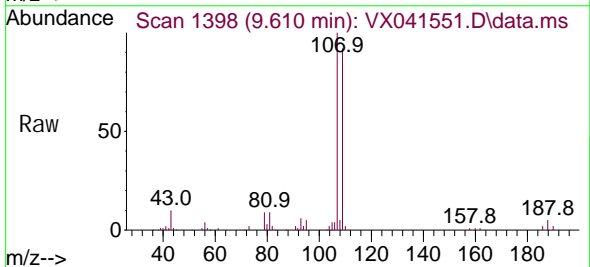
Instrument : MSVOA_X
 ClientSampleId :

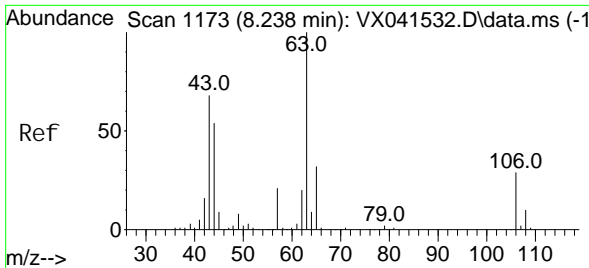
Tgt Ion: 129 Resp: 41253
 Ion Ratio Lower Upper
 129 100
 127 77.3 38.9 116.7



#54
 1,2-Di bromoethane
 Concen: 19.265 ug/l
 RT: 9.610 min Scan# 1398
 Delta R.T. 0.000 min
 Lab File: VX041551.D
 Acq: 16 May 2024 09:50

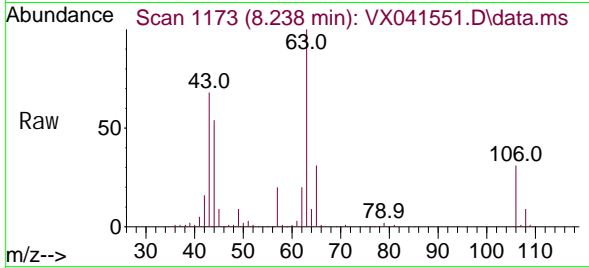
Tgt Ion: 107 Resp: 39649
 Ion Ratio Lower Upper
 107 100
 109 93.1 75.3 112.9



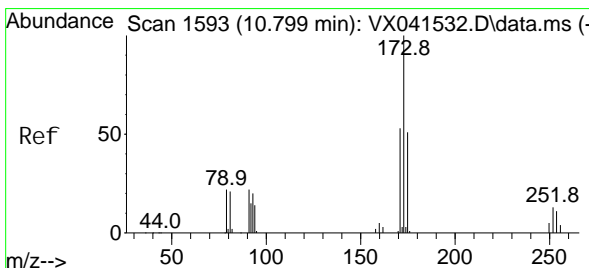
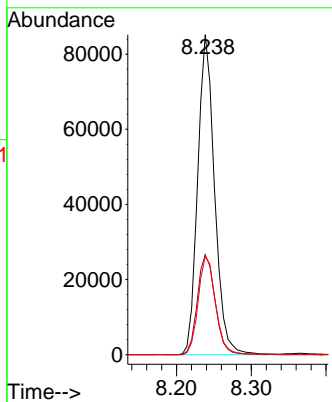
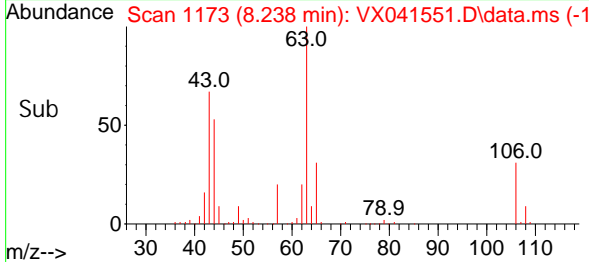


#55
 2-Chloroethyl vinyl ether
 Concen: 87.630 ug/l
 RT: 8.238 min Scan# 1173
 Delta R.T. 0.000 min
 Lab File: VX041551.D
 Acq: 16 May 2024 09:50

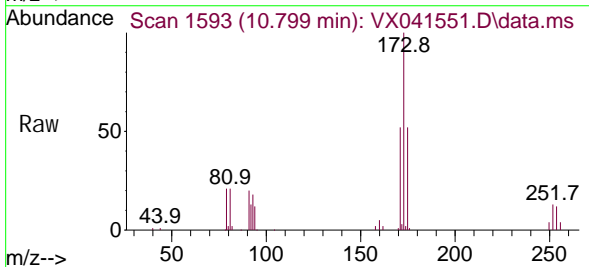
Instrument : MSVOA_X
 ClientSampleId :



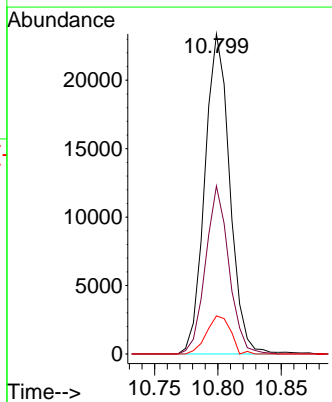
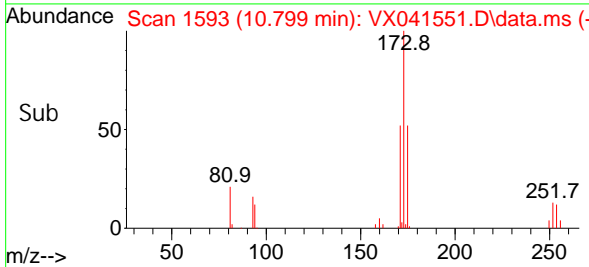
Tgt Ion: 63 Resp: 133621
 Ion Ratio Lower Upper
 63 100
 65 32.6 25.5 38.3
 106 31.5 24.7 37.1

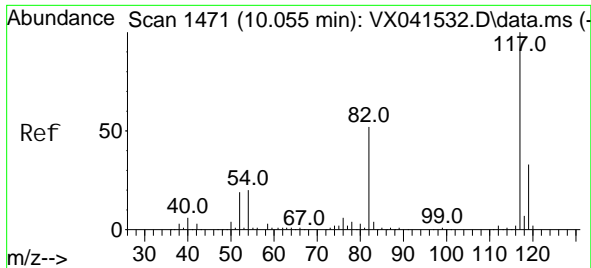


#56
 Bromoform
 Concen: 18.112 ug/l
 RT: 10.799 min Scan# 1593
 Delta R.T. 0.000 min
 Lab File: VX041551.D
 Acq: 16 May 2024 09:50



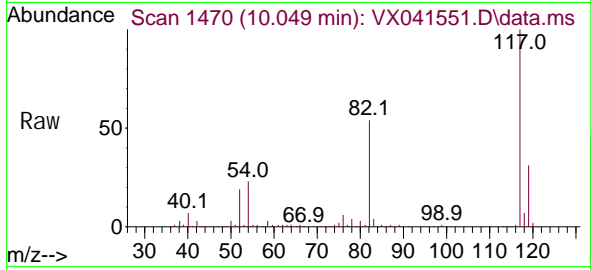
Tgt Ion: 173 Resp: 32044
 Ion Ratio Lower Upper
 173 100
 175 49.3 39.0 58.6
 254 11.2 10.3 15.5



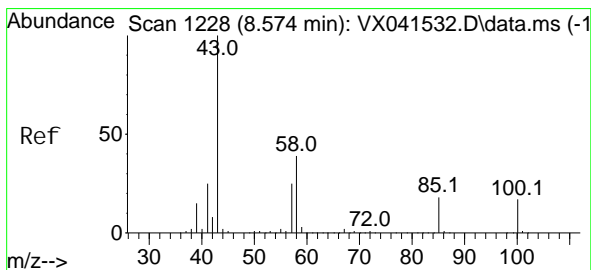
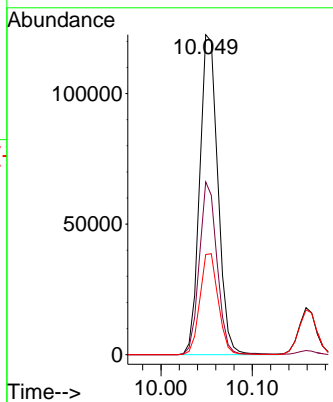
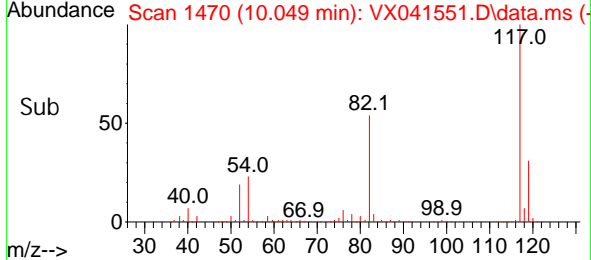


#57
 Chlorobenzene-d5
 Concen: 30.000 ug/l
 RT: 10.049 min Scan# 1470
 Delta R.T. -0.006 min
 Lab File: VX041551.D
 Acq: 16 May 2024 09:50

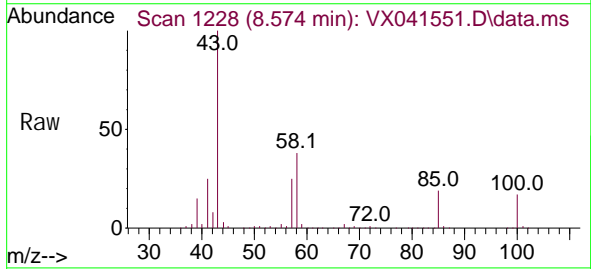
Instrument : MSVOA_X
 ClientSampleId :



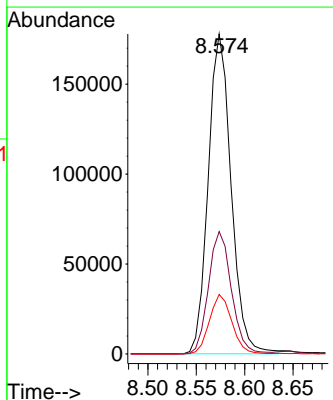
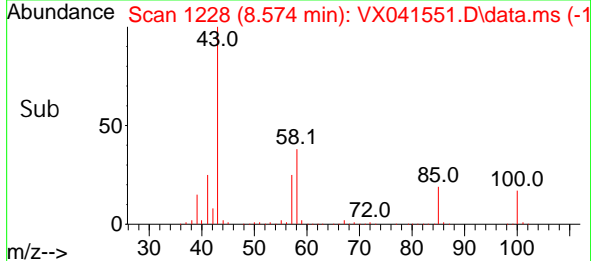
Tgt Ion: 117 Resp: 169309
 Ion Ratio Lower Upper
 117 100
 82 52.4 41.7 62.5
 119 31.8 25.7 38.5

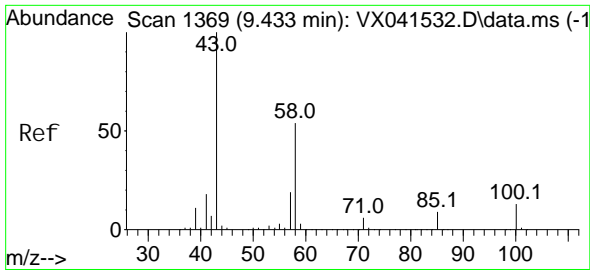


#58
 4-Methyl -2-Pentanone
 Concen: 94.687 ug/l
 RT: 8.574 min Scan# 1228
 Delta R.T. 0.000 min
 Lab File: VX041551.D
 Acq: 16 May 2024 09:50



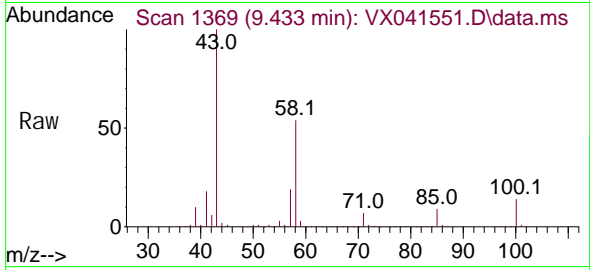
Tgt Ion: 43 Resp: 292918
 Ion Ratio Lower Upper
 43 100
 58 38.5 30.2 45.4
 85 18.2 14.6 21.8



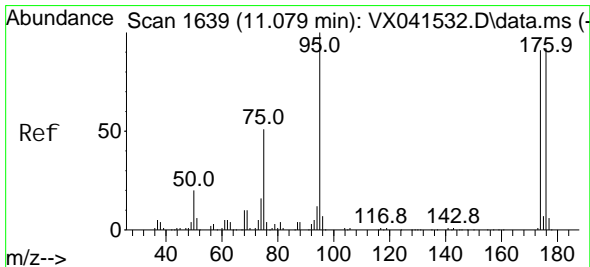
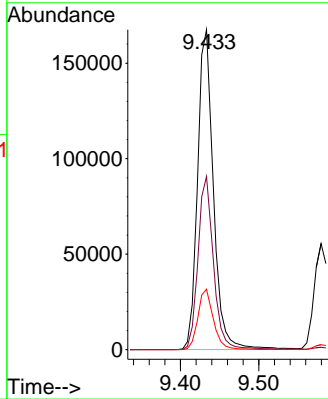
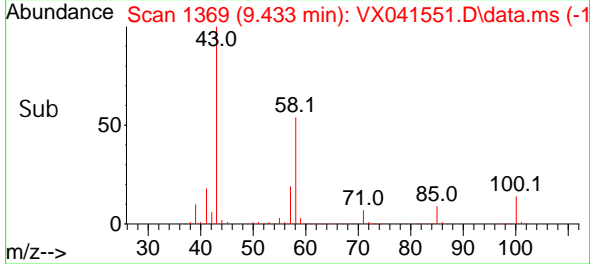


#59
 2-Hexanone
 Concen: 95.426 ug/l
 RT: 9.433 min Scan# 1369
 Delta R.T. 0.000 min
 Lab File: VX041551.D
 Acq: 16 May 2024 09:50

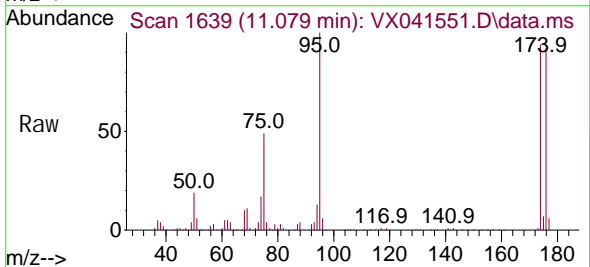
Instrument : MSVOA_X
 ClientSampleId :



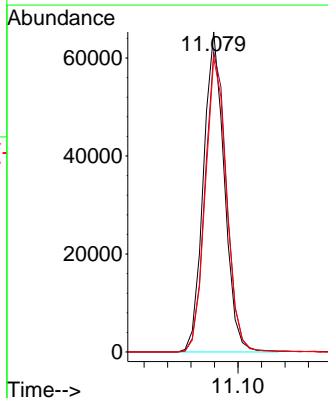
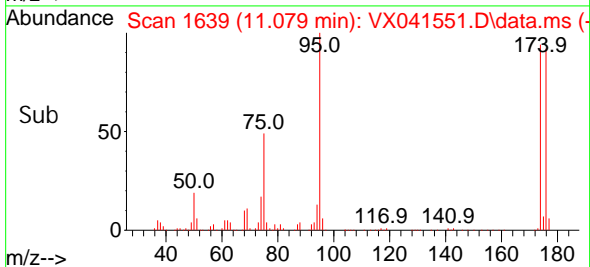
Tgt Ion: 43 Resp: 235173
 Ion Ratio Lower Upper
 43 100
 58 53.2 42.3 63.5
 57 18.4 15.1 22.7

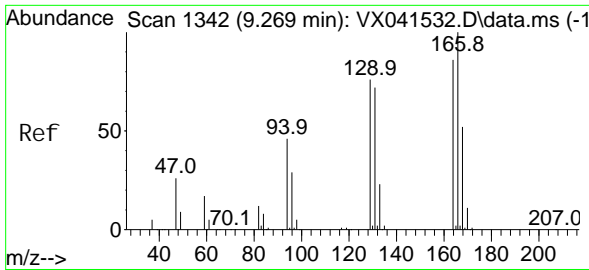


#60
 4-Bromofluorobenzene
 Concen: 30.429 ug/l
 RT: 11.079 min Scan# 1639
 Delta R.T. 0.000 min
 Lab File: VX041551.D
 Acq: 16 May 2024 09:50



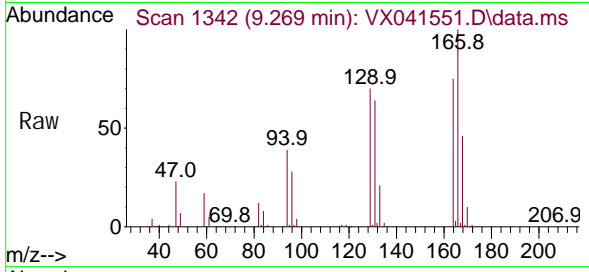
Tgt Ion: 95 Resp: 80424
 Ion Ratio Lower Upper
 95 100
 174 97.1 76.6 115.0
 176 93.8 75.4 113.0



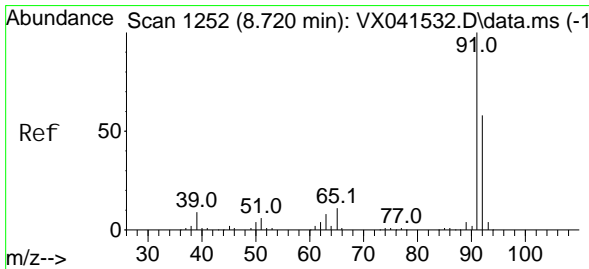
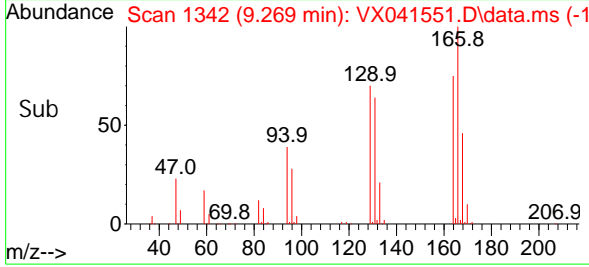
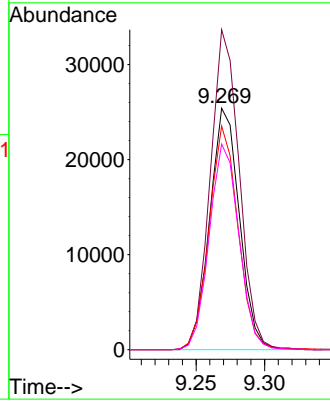


#61
 Tetrachloroethene
 Concen: 18.461 ug/l
 RT: 9.269 min Scan# 11
 Delta R.T. 0.000 min
 Lab File: VX041551.D
 Acq: 16 May 2024 09:50

Instrument :
 MSVOA_X
 ClientSampleId :

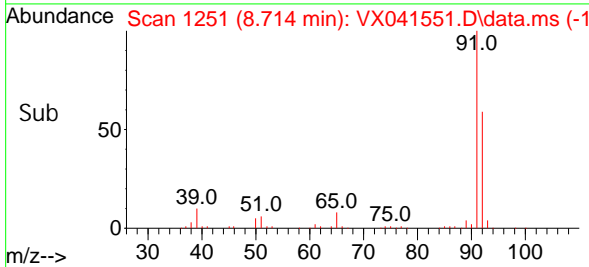
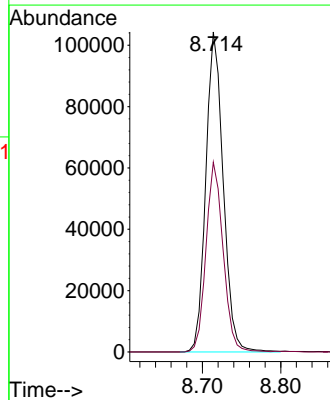
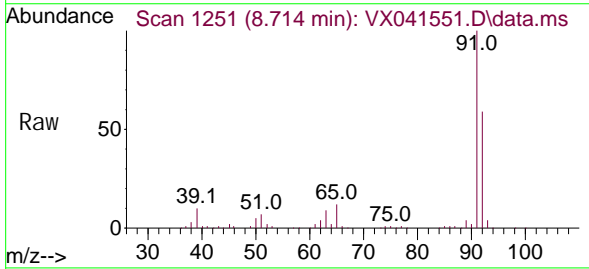


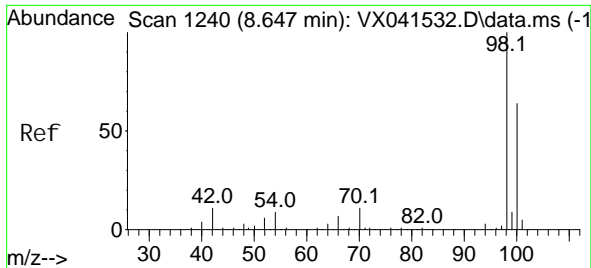
Tgt Ion: 164 Resp: 38242
 Ion Ratio Lower Upper
 164 100
 166 132.1 92.8 139.2
 129 92.3 70.1 105.1
 131 84.8 67.2 100.8



#62
 Toluene
 Concen: 19.070 ug/l
 RT: 8.714 min Scan# 1251
 Delta R.T. -0.006 min
 Lab File: VX041551.D
 Acq: 16 May 2024 09:50

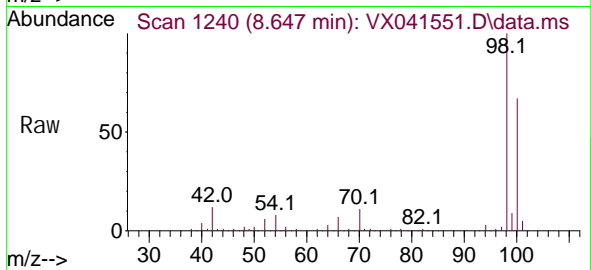
Tgt Ion: 91 Resp: 160660
 Ion Ratio Lower Upper
 91 100
 92 58.3 47.0 70.6



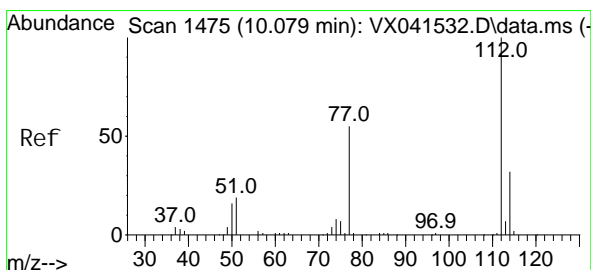
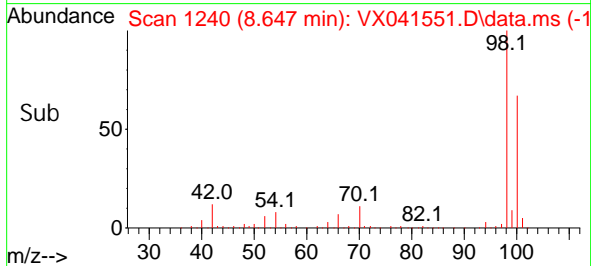
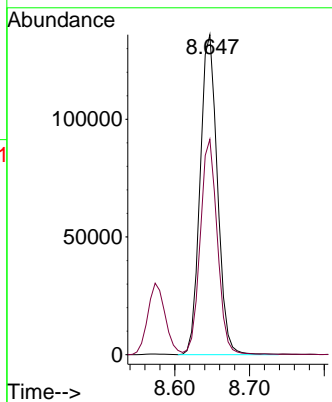


#63
 Tol uene-d8
 Concen: 30.049 ug/l
 RT: 8.647 min Scan# 11
 Delta R.T. 0.000 min
 Lab File: VX041551.D
 Acq: 16 May 2024 09:50

Instrument :
 MSVOA_X
 ClientSampleId :

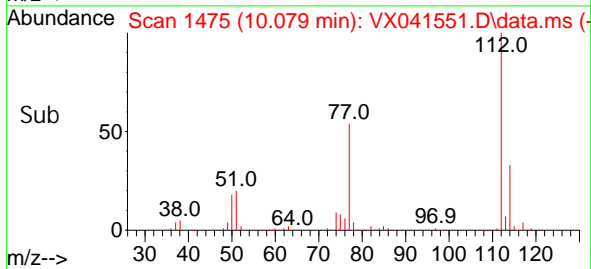
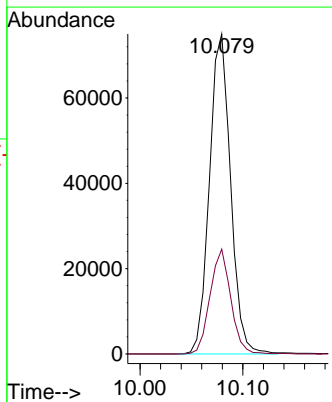
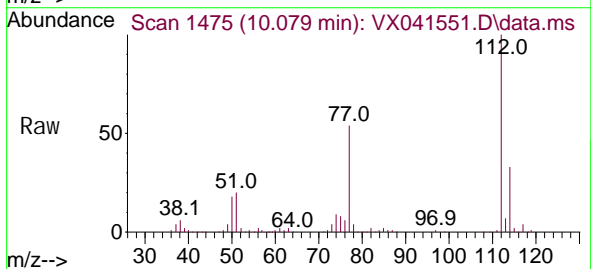


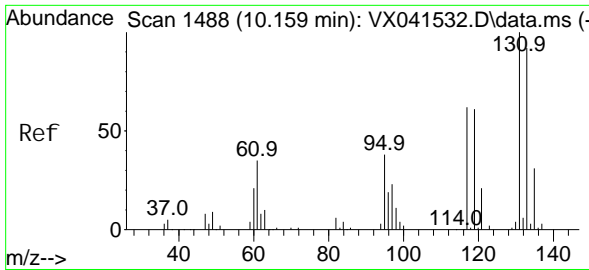
Tgt Ion: 98 Resp: 218084
 Ion Ratio Lower Upper
 98 100
 100 66.6 53.1 79.7



#64
 Chlorobenzene
 Concen: 18.690 ug/l
 RT: 10.079 min Scan# 1475
 Delta R.T. 0.000 min
 Lab File: VX041551.D
 Acq: 16 May 2024 09:50

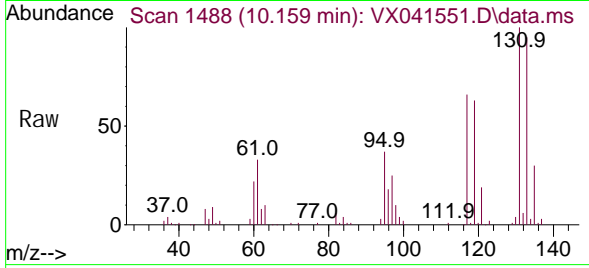
Tgt Ion: 112 Resp: 106951
 Ion Ratio Lower Upper
 112 100
 114 32.8 26.0 39.0



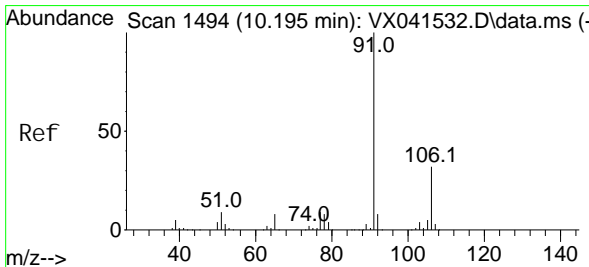
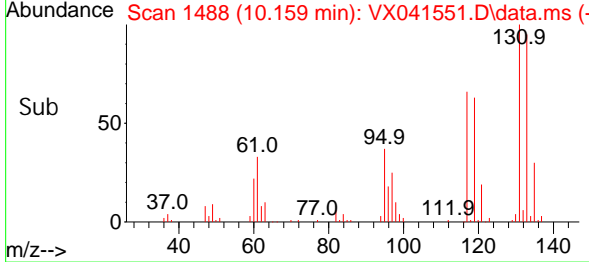
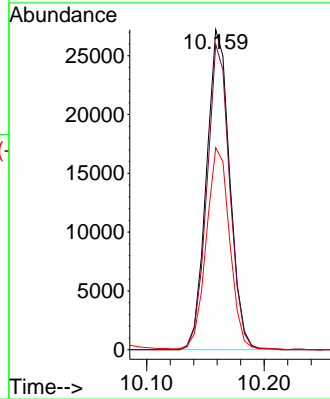


#65
 1, 1, 1, 2-Tetrachloroethane
 Concen: 18.509 ug/l
 RT: 10.159 min Scan# 1488
 Delta R.T. 0.000 min
 Lab File: VX041551.D
 Acq: 16 May 2024 09:50

Instrument : MSVOA_X
 ClientSampleId :

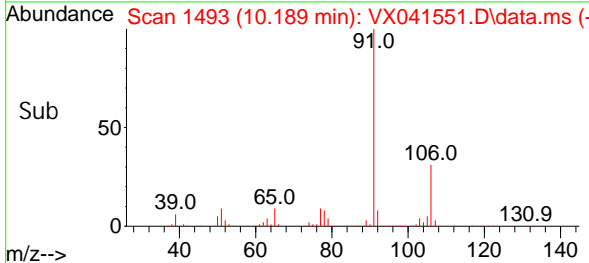
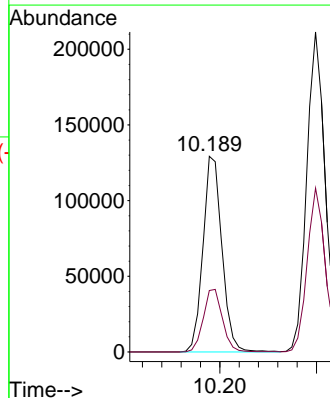
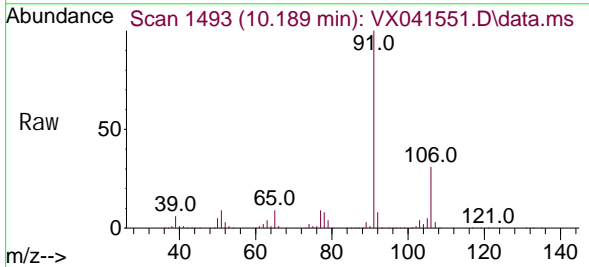


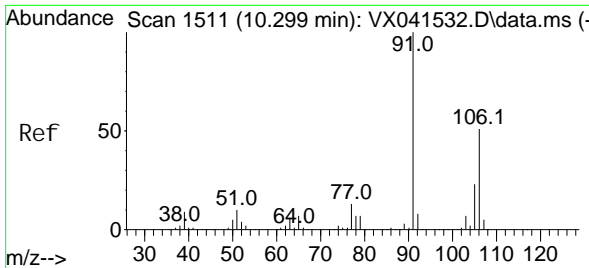
Tgt Ion: 131 Resp: 37488
 Ion Ratio Lower Upper
 131 100
 133 93.3 0.0 191.6
 119 63.2 0.0 126.4



#66
 Ethyl Benzene
 Concen: 18.903 ug/l
 RT: 10.189 min Scan# 1493
 Delta R.T. -0.006 min
 Lab File: VX041551.D
 Acq: 16 May 2024 09:50

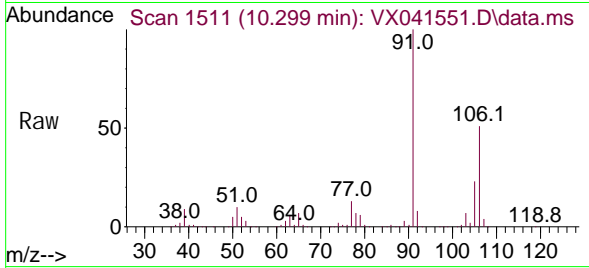
Tgt Ion: 91 Resp: 176833
 Ion Ratio Lower Upper
 91 100
 106 31.4 25.9 38.9



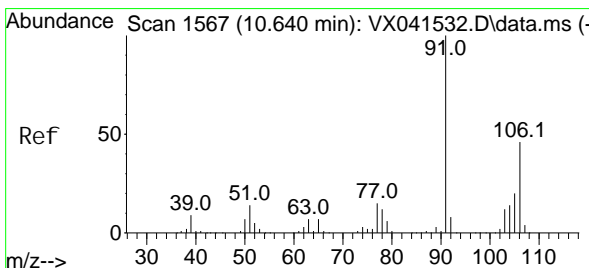
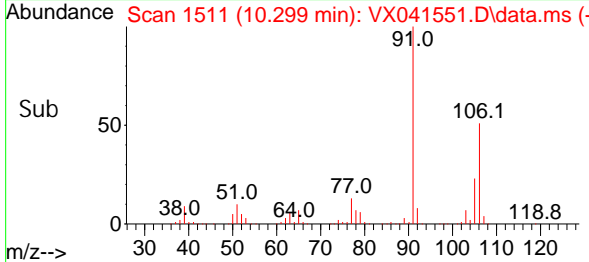
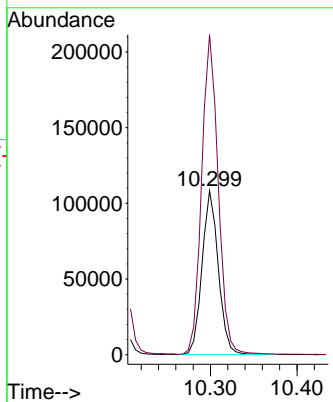


#67
 m/p-Xyl enes
 Concen: 38.611 ug/l
 RT: 10.299 min Scan# 1511
 Delta R.T. 0.000 min
 Lab File: VX041551.D
 Acq: 16 May 2024 09:50

Instrument :
 MSVOA_X
 ClientSampleId :

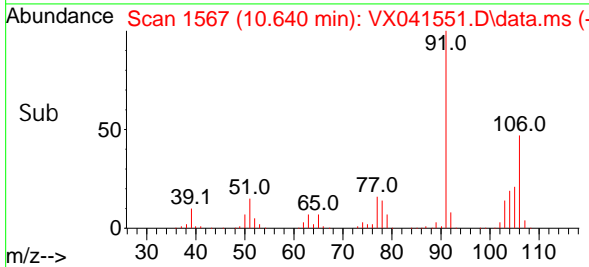
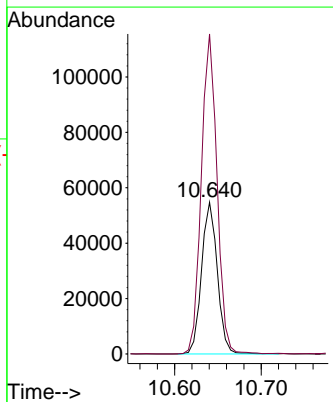
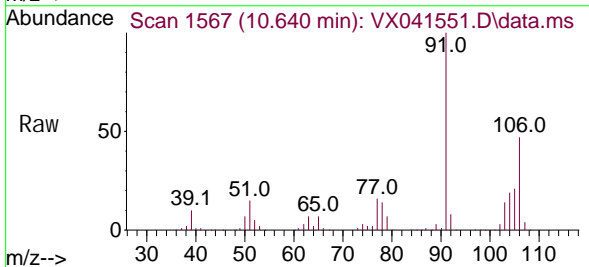


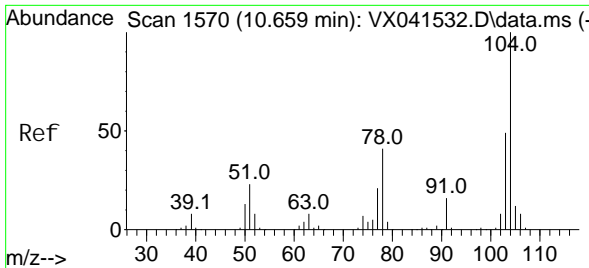
Tgt Ion: 106 Resp: 141244
 Ion Ratio Lower Upper
 106 100
 91 198.6 156.5 234.7



#68
 o-Xyl ene
 Concen: 18.821 ug/l
 RT: 10.640 min Scan# 1567
 Delta R.T. 0.000 min
 Lab File: VX041551.D
 Acq: 16 May 2024 09:50

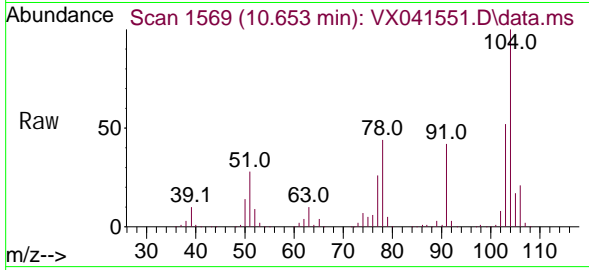
Tgt Ion: 106 Resp: 69305
 Ion Ratio Lower Upper
 106 100
 91 209.4 105.2 315.6



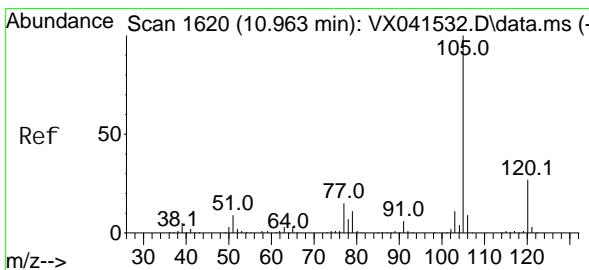
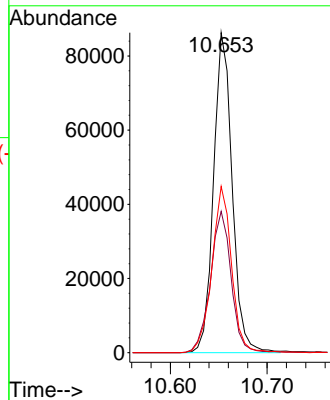
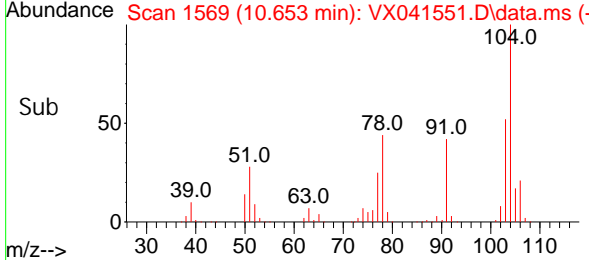


#69
 Styrene
 Concen: 18.704 ug/l
 RT: 10.653 min Scan# 1569
 Delta R.T. -0.006 min
 Lab File: VX041551.D
 Acq: 16 May 2024 09:50

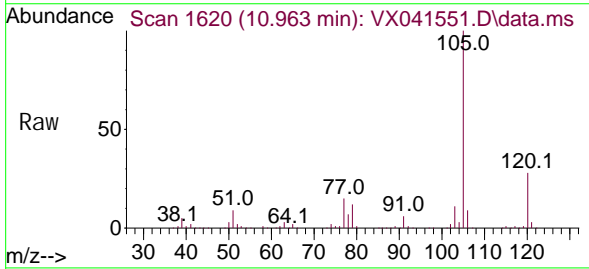
Instrument : MSVOA_X
 ClientSampleId :



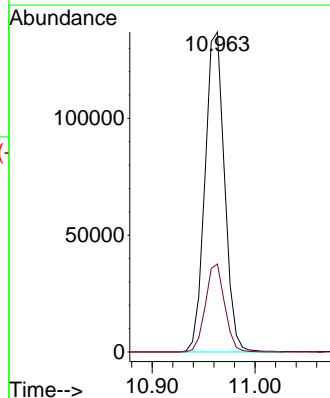
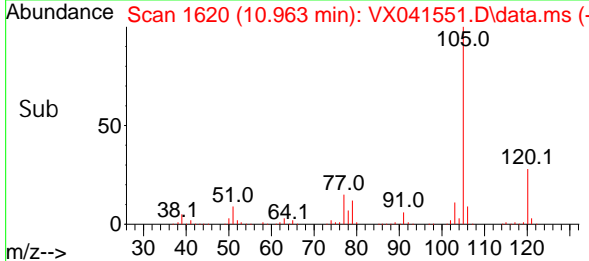
Tgt Ion: 104 Resp: 115479
 Ion Ratio Lower Upper
 104 100
 78 49.3 39.3 58.9
 103 55.0 43.2 64.8

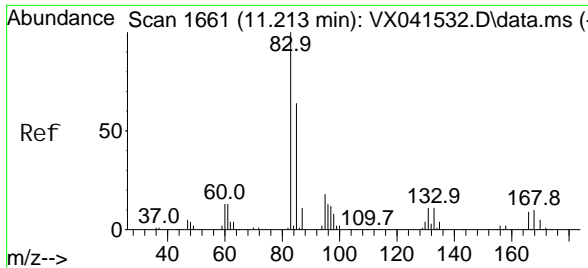


#70
 Isopropyl benzene
 Concen: 19.472 ug/l
 RT: 10.963 min Scan# 1620
 Delta R.T. 0.000 min
 Lab File: VX041551.D
 Acq: 16 May 2024 09:50



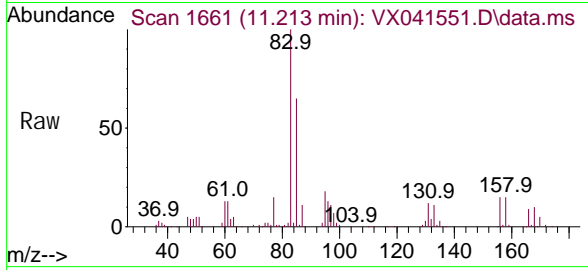
Tgt Ion: 105 Resp: 181181
 Ion Ratio Lower Upper
 105 100
 120 27.0 18.8 34.8



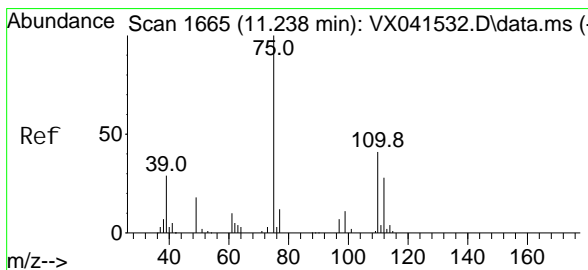
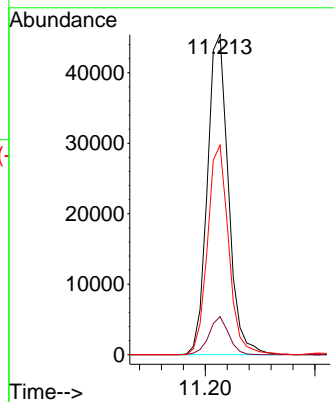
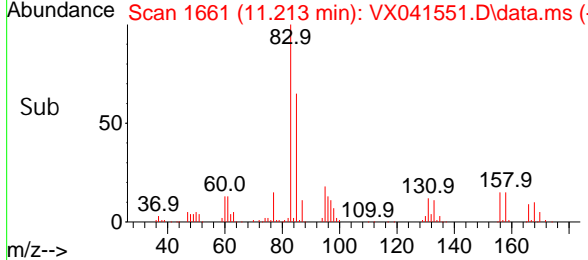


#71
 1, 1, 2, 2-Tetrachloroethane
 Concen: 18.960 ug/l
 RT: 11.213 min Scan# 1661
 Delta R.T. 0.000 min
 Lab File: VX041551.D
 Acq: 16 May 2024 09:50

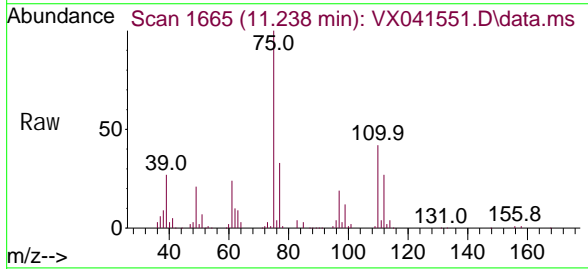
Instrument : MSVOA_X
 ClientSampleId :



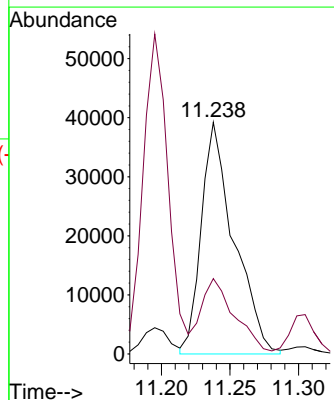
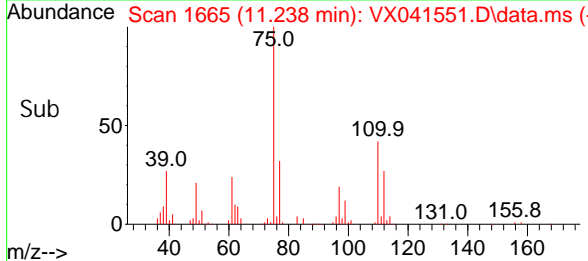
Tgt Ion: 83 Resp: 60605
 Ion Ratio Lower Upper
 83 100
 131 11.1 5.7 17.0
 85 65.7 32.3 96.8

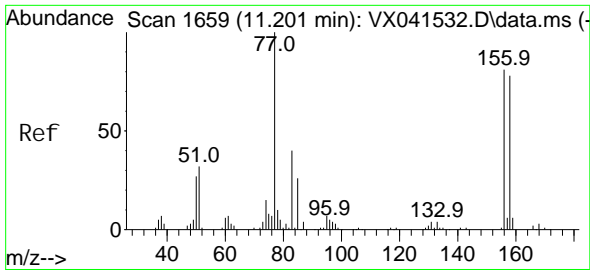


#72
 1, 2, 3-Tri chloropropane
 Concen: 22.652 ug/l
 RT: 11.238 min Scan# 1665
 Delta R.T. 0.000 min
 Lab File: VX041551.D
 Acq: 16 May 2024 09:50



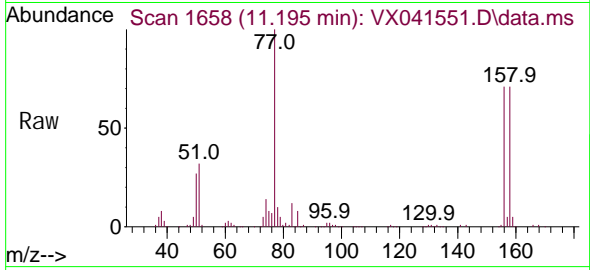
Tgt Ion: 75 Resp: 65298
 Ion Ratio Lower Upper
 75 100
 77 33.2 0.0 78.8



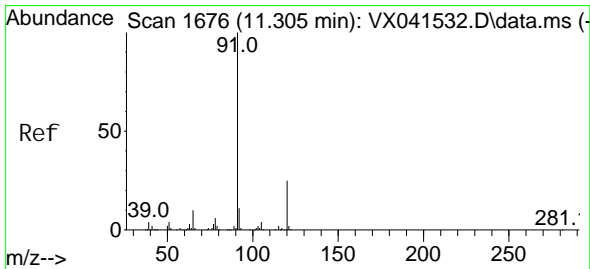
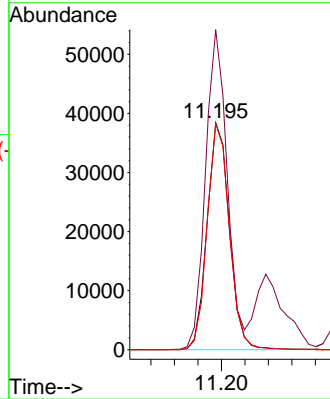
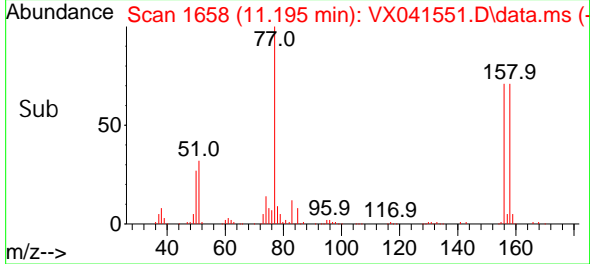


#73
 Bromobenzene
 Concen: 18.503 ug/l
 RT: 11.195 min Scan# 1658
 Delta R.T. -0.006 min
 Lab File: VX041551.D
 Acq: 16 May 2024 09:50

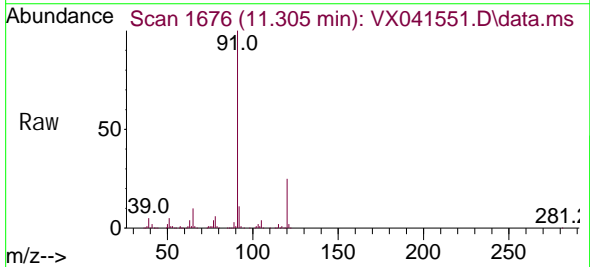
Instrument : MSVOA_X
 ClientSampleId :



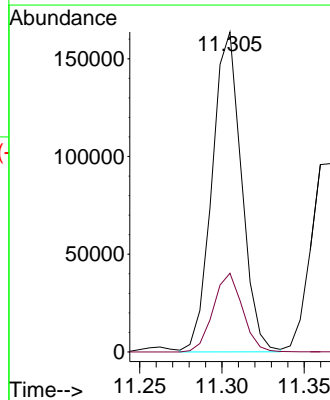
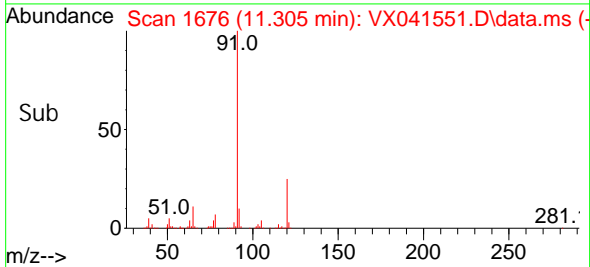
Tgt Ion: 156 Resp: 50587
 Ion Ratio Lower Upper
 156 100
 77 136.6 0.0 267.4
 158 98.8 0.0 192.8

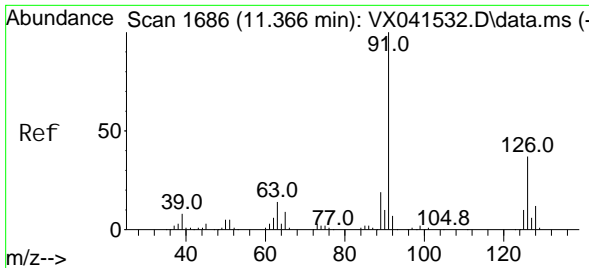


#74
 n-propyl benzene
 Concen: 19.401 ug/l
 RT: 11.305 min Scan# 1676
 Delta R.T. 0.000 min
 Lab File: VX041551.D
 Acq: 16 May 2024 09:50



Tgt Ion: 91 Resp: 203555
 Ion Ratio Lower Upper
 91 100
 120 24.4 0.0 48.4

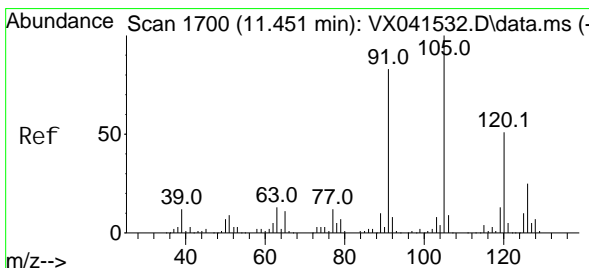
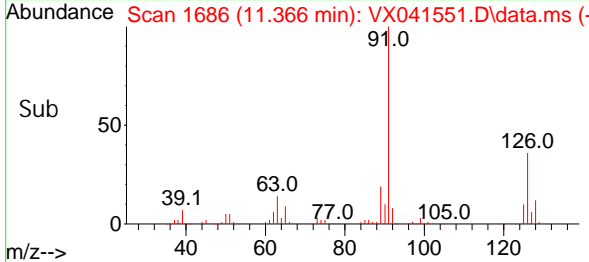
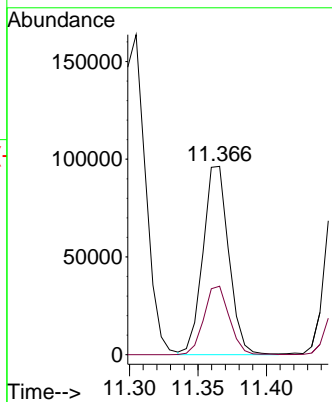
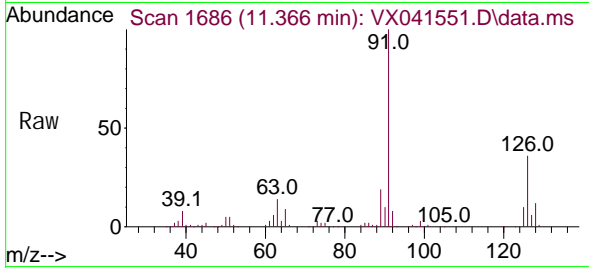




#75
 2-Chlorotoluene
 Concen: 19.215 ug/l
 RT: 11.366 min Scan# 1686
 Delta R.T. 0.000 min
 Lab File: VX041551.D
 Acq: 16 May 2024 09:50

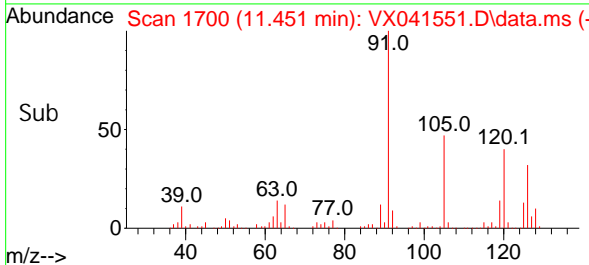
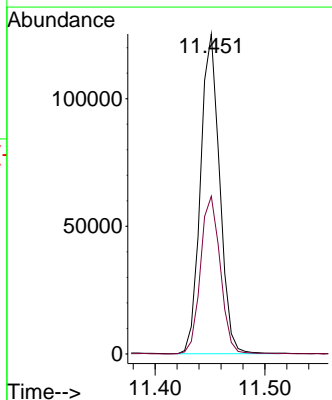
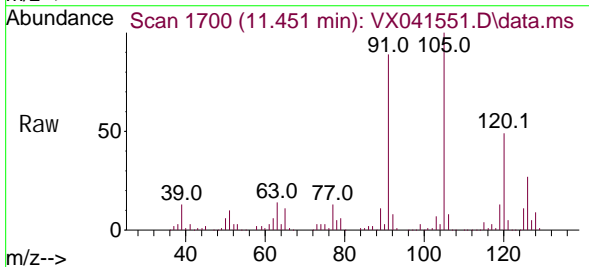
Instrument : MSVOA_X
 ClientSampleId :

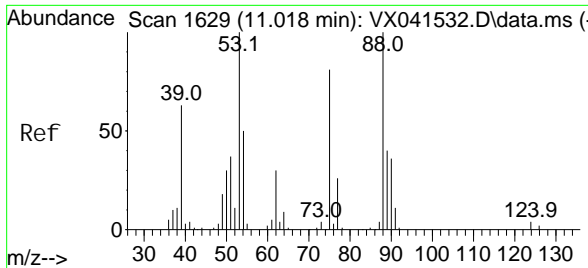
Tgt Ion: 91 Resp: 126603
 Ion Ratio Lower Upper
 91 100
 126 35.7 0.0 71.6



#76
 1,3,5-Triethylbenzene
 Concen: 19.133 ug/l
 RT: 11.451 min Scan# 1700
 Delta R.T. 0.000 min
 Lab File: VX041551.D
 Acq: 16 May 2024 09:50

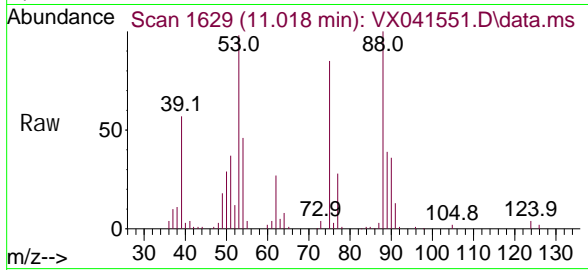
Tgt Ion: 105 Resp: 151957
 Ion Ratio Lower Upper
 105 100
 120 51.2 0.0 102.6



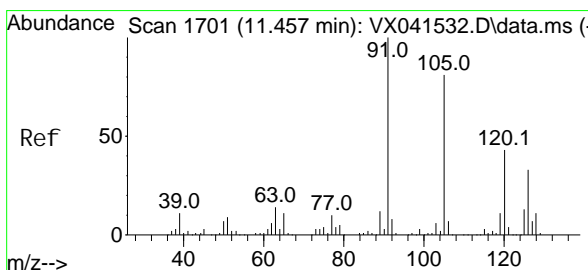
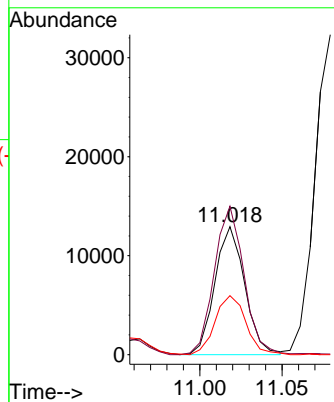
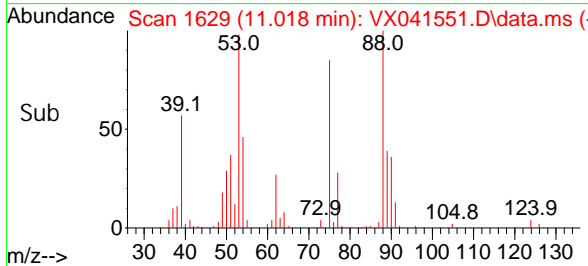


#77
 t-1, 4-Di chloro-2-butene
 Concen: 18.062 ug/l
 RT: 11.018 min Scan# 1629
 Delta R.T. 0.000 min
 Lab File: VX041551.D
 Acq: 16 May 2024 09:50

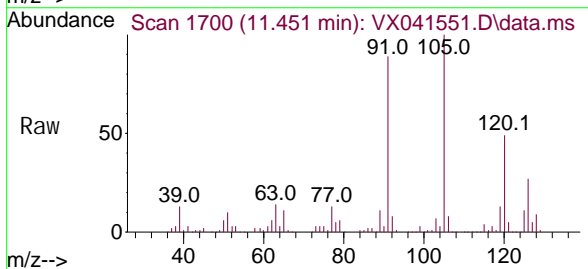
Instrument : MSVOA_X
 ClientSampleId :



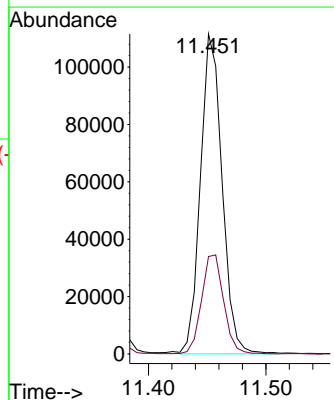
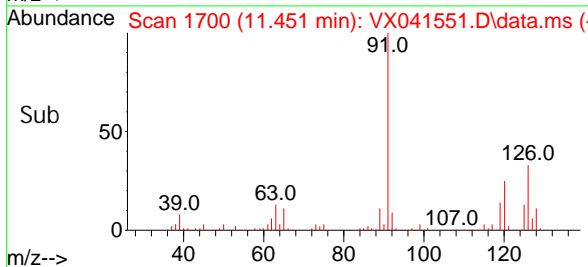
Tgt Ion: 75 Resp: 16365
 Ion Ratio Lower Upper
 75 100
 53 116.0 61.8 185.3
 89 45.6 24.9 74.7

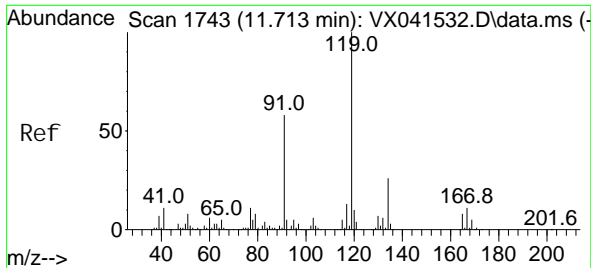


#78
 4-Chlorotoluene
 Concen: 19.018 ug/l
 RT: 11.451 min Scan# 1700
 Delta R.T. -0.006 min
 Lab File: VX041551.D
 Acq: 16 May 2024 09:50



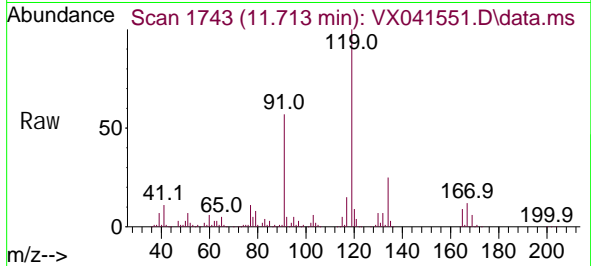
Tgt Ion: 91 Resp: 142718
 Ion Ratio Lower Upper
 91 100
 126 31.7 0.0 62.2





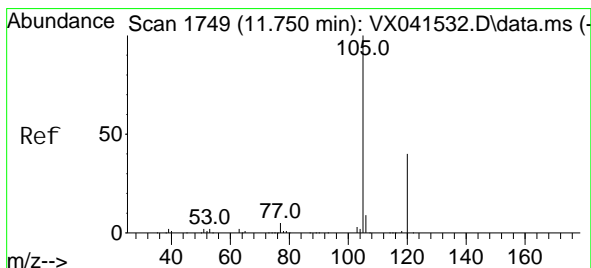
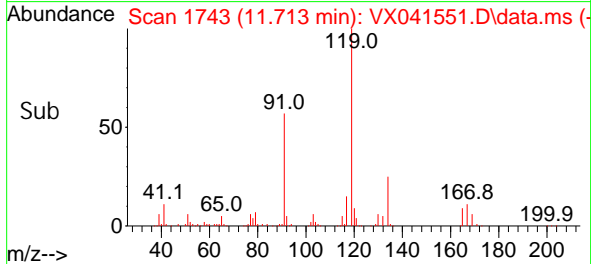
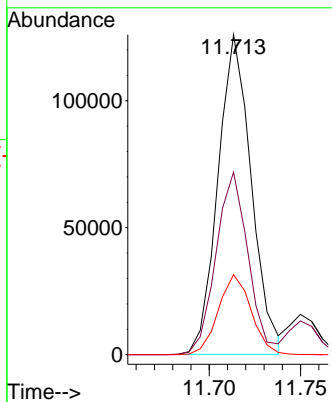
#79
 tert-butyl benzene
 Concen: 18.887 ug/l
 RT: 11.713 min Scan# 1743
 Delta R.T. 0.000 min
 Lab File: VX041551.D
 Acq: 16 May 2024 09:50

Instrument : MSVOA_X
 ClientSampleId :



Tgt Ion: 119 Resp: 159648

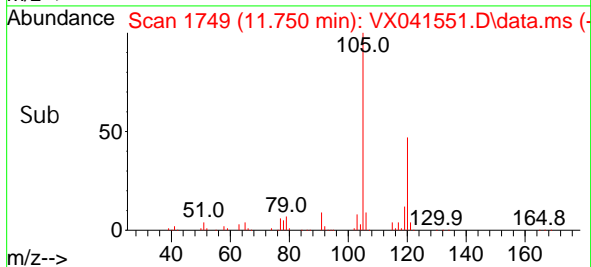
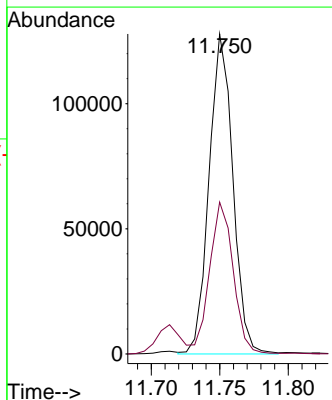
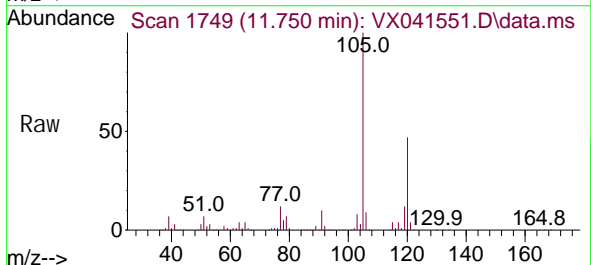
Ion	Ratio	Lower	Upper
119	100		
91	55.5	0.0	110.0
134	24.7	0.0	50.0

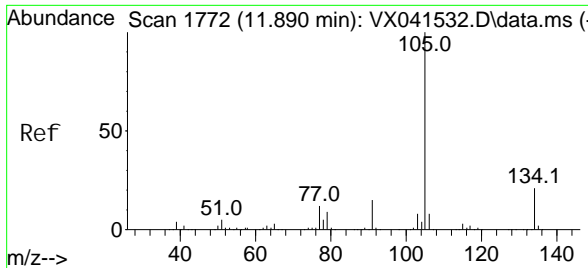


#80
 1,2,4-Tri methyl benzene
 Concen: 19.376 ug/l
 RT: 11.750 min Scan# 1749
 Delta R.T. 0.000 min
 Lab File: VX041551.D
 Acq: 16 May 2024 09:50

Tgt Ion: 105 Resp: 154238

Ion	Ratio	Lower	Upper
105	100		
120	47.5	0.0	92.2

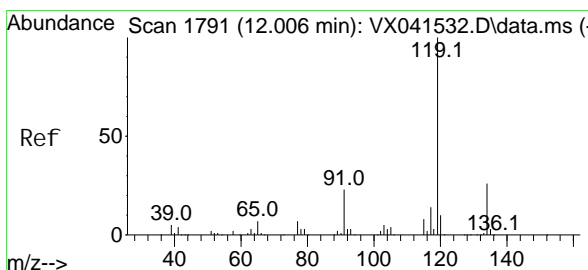
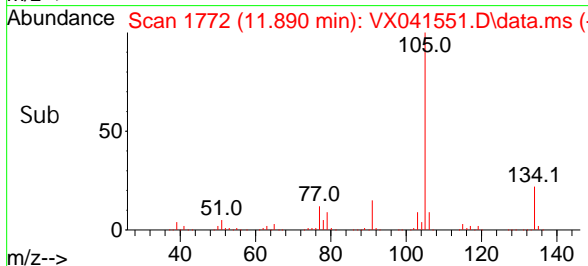
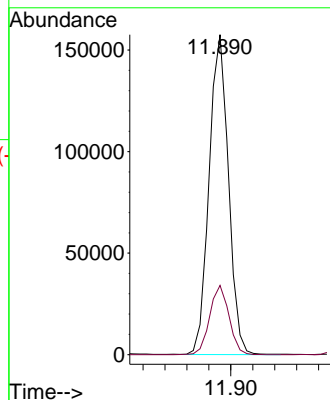
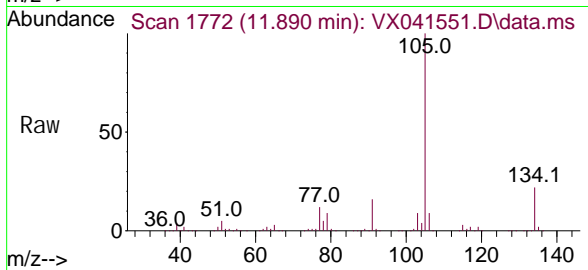




#81
 sec-Butyl benzene
 Concen: 19.522 ug/l
 RT: 11.890 min Scan# 1772
 Delta R.T. 0.000 min
 Lab File: VX041551.D
 Acq: 16 May 2024 09:50

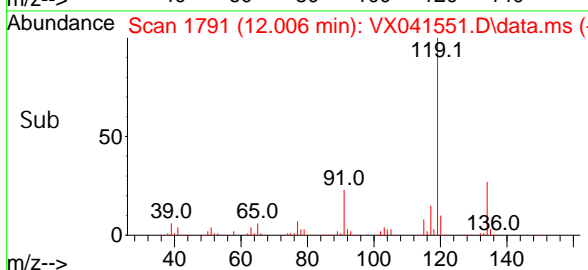
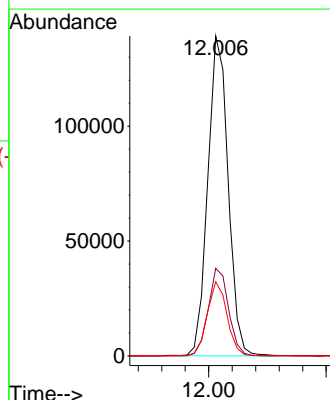
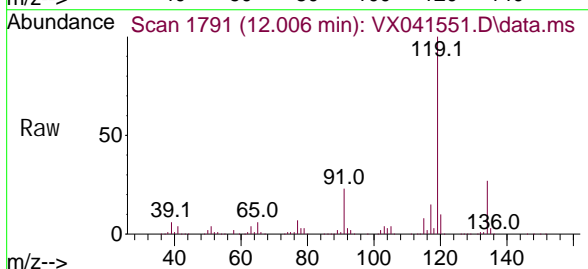
Instrument : MSVOA_X
 ClientSampleId :

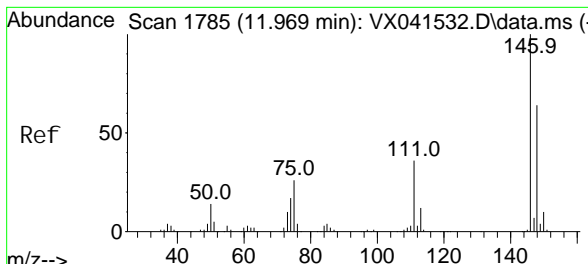
Tgt Ion: 105 Resp: 192825
 Ion Ratio Lower Upper
 105 100
 134 21.6 0.0 43.4



#82
 p-Isopropyl toluene
 Concen: 19.379 ug/l
 RT: 12.006 min Scan# 1791
 Delta R.T. 0.000 min
 Lab File: VX041551.D
 Acq: 16 May 2024 09:50

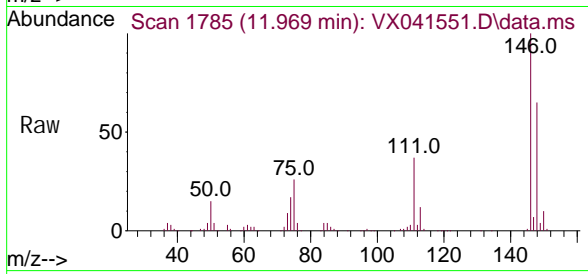
Tgt Ion: 119 Resp: 167560
 Ion Ratio Lower Upper
 119 100
 134 27.4 0.0 53.4
 91 22.6 0.0 44.8



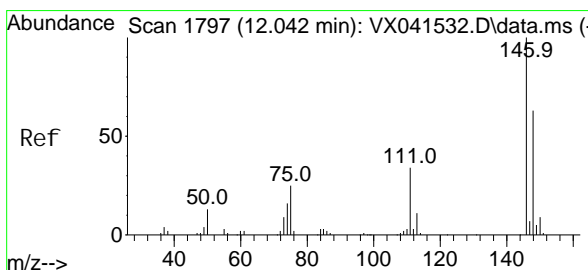
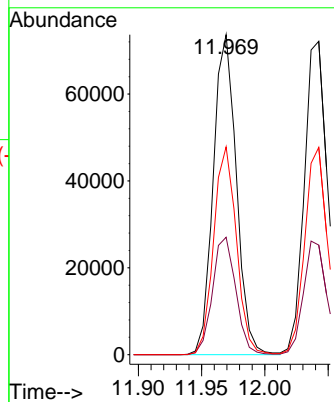
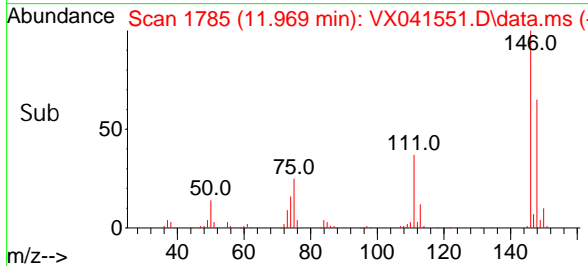


#83
 1, 3-Di chl orobenzene
 Concen: 19.071 ug/l
 RT: 11.969 min Scan# 1785
 Delta R.T. 0.000 min
 Lab File: VX041551.D
 Acq: 16 May 2024 09:50

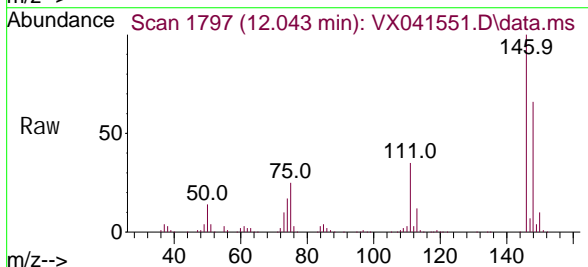
Instrument :
 MSVOA_X
 ClientSampleId :



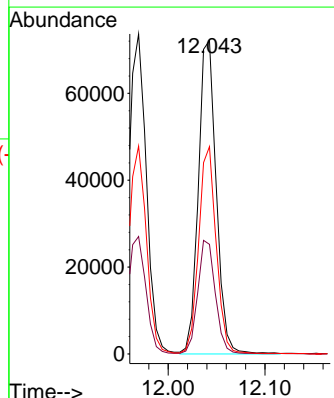
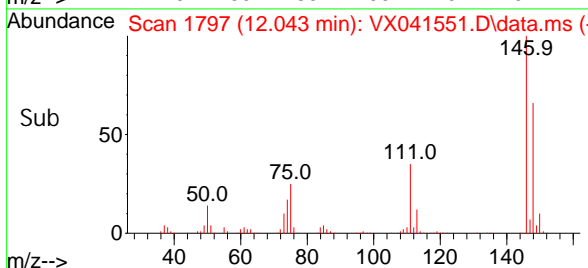
Tgt Ion: 146 Resp: 93510
 Ion Ratio Lower Upper
 146 100
 111 37.2 18.4 55.2
 148 64.0 32.3 96.9

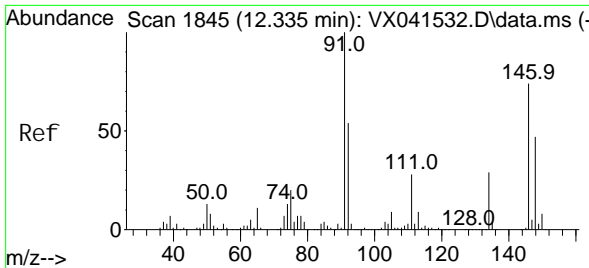


#84
 1, 4-Di chl orobenzene
 Concen: 18.798 ug/l
 RT: 12.043 min Scan# 1797
 Delta R.T. 0.000 min
 Lab File: VX041551.D
 Acq: 16 May 2024 09:50



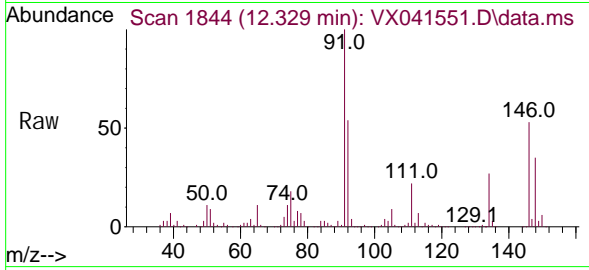
Tgt Ion: 146 Resp: 93132
 Ion Ratio Lower Upper
 146 100
 111 35.8 17.8 53.5
 148 64.5 31.9 95.5



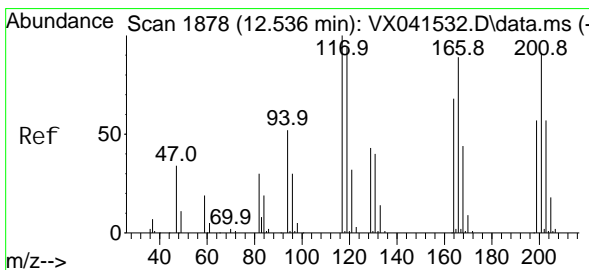
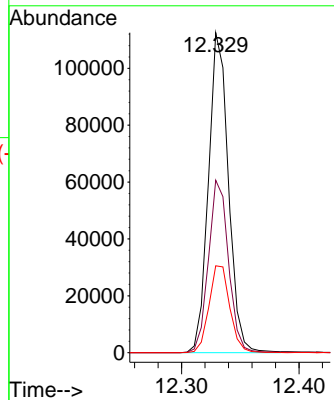
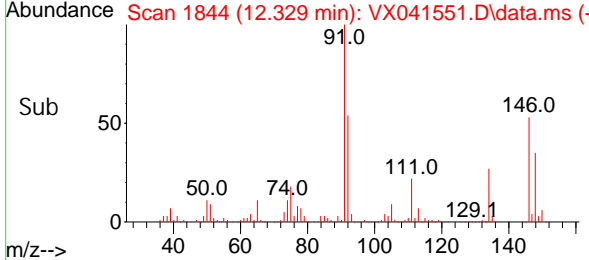


#85
 n-Butyl benzene
 Concen: 19.133 ug/l
 RT: 12.329 min Scan# 1844
 Delta R.T. -0.006 min
 Lab File: VX041551.D
 Acq: 16 May 2024 09:50

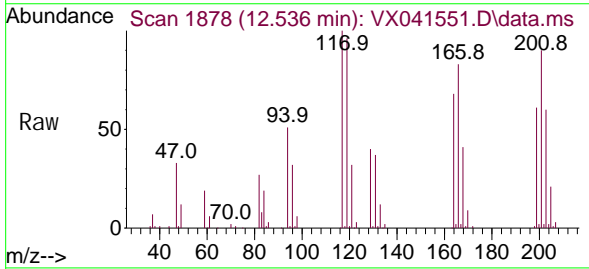
Instrument : MSVOA_X
 ClientSampleId :



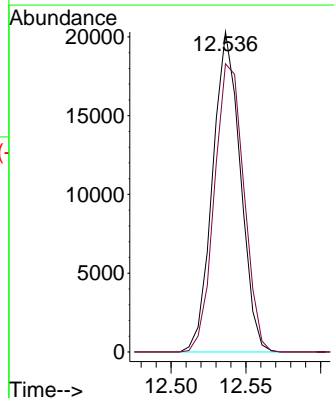
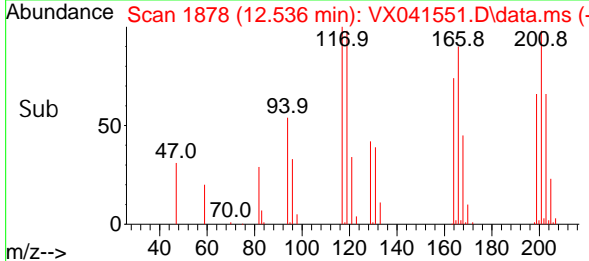
Tgt Ion: 91 Resp: 133121
 Ion Ratio Lower Upper
 91 100
 92 54.2 0.0 108.4
 134 28.4 0.0 56.6

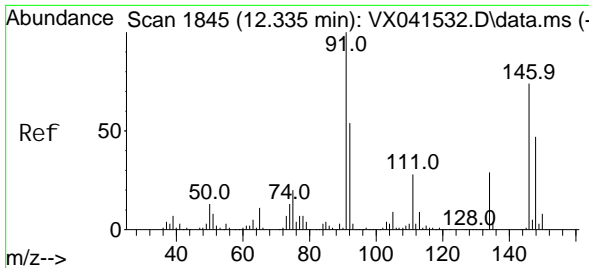


#86
 Hexachloroethane
 Concen: 17.997 ug/l
 RT: 12.536 min Scan# 1878
 Delta R.T. 0.000 min
 Lab File: VX041551.D
 Acq: 16 May 2024 09:50



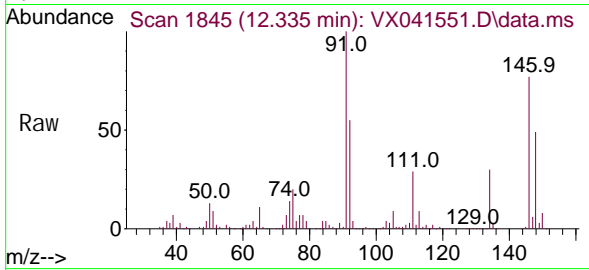
Tgt Ion: 117 Resp: 26198
 Ion Ratio Lower Upper
 117 100
 201 95.7 47.3 141.8



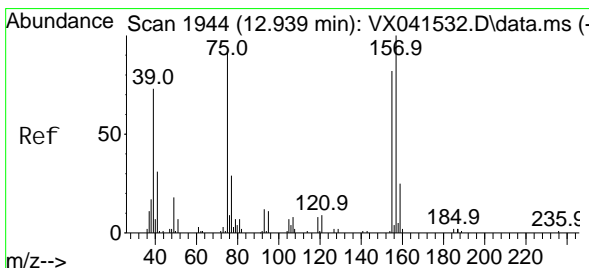
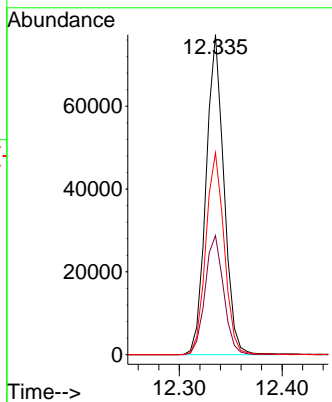
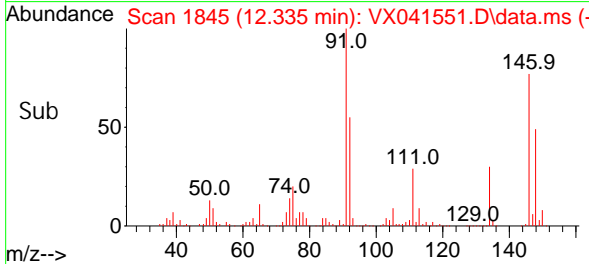


#87
 1, 2-Di chl orobenzene
 Concen: 18.705 ug/l
 RT: 12.335 min Scan# 1845
 Delta R.T. 0.000 min
 Lab File: VX041551.D
 Acq: 16 May 2024 09:50

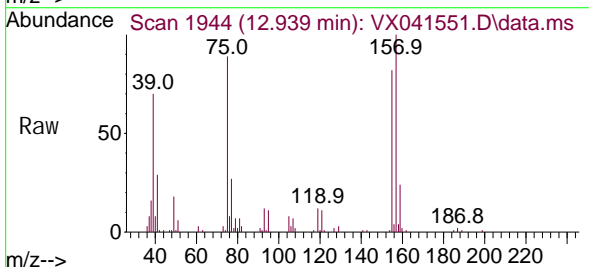
Instrument : MSVOA_X
 ClientSampleId :



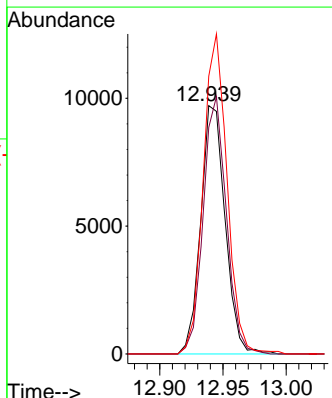
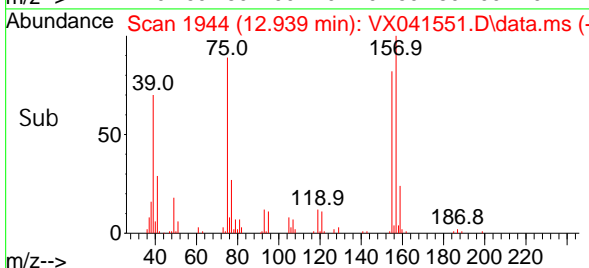
Tgt Ion: 146 Resp: 93610
 Ion Ratio Lower Upper
 146 100
 111 38.6 19.3 57.9
 148 64.2 31.8 95.4

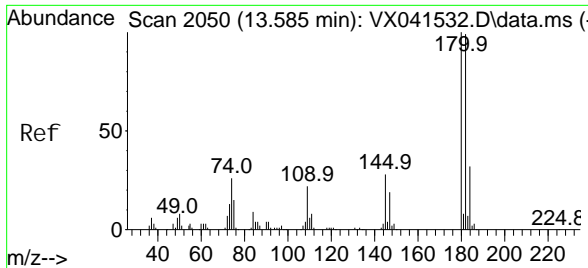


#88
 1, 2-Di bromo-3-Chl oropropane
 Concen: 18.610 ug/l
 RT: 12.939 min Scan# 1944
 Delta R.T. 0.000 min
 Lab File: VX041551.D
 Acq: 16 May 2024 09:50



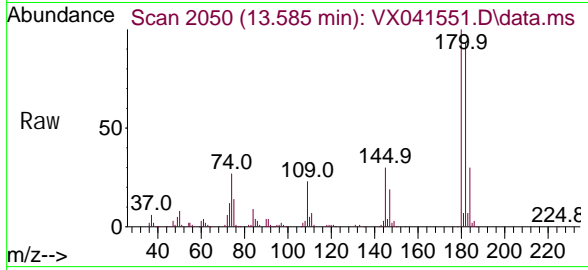
Tgt Ion: 75 Resp: 13064
 Ion Ratio Lower Upper
 75 100
 155 98.3 80.4 120.6
 157 125.4 102.2 153.2





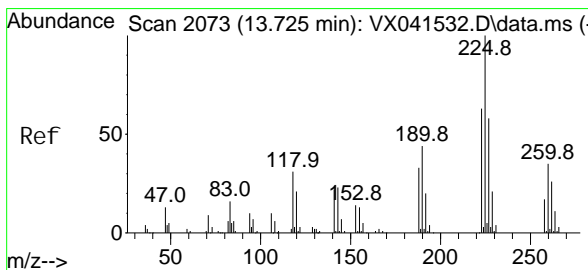
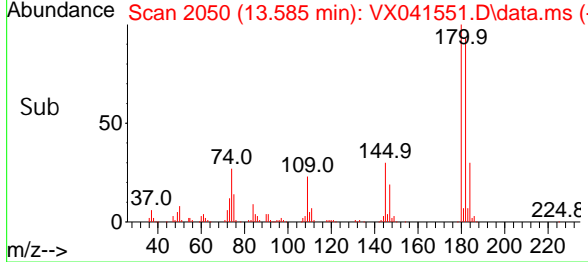
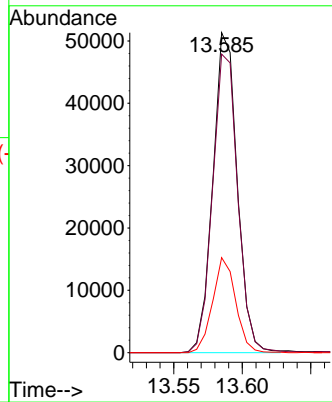
#89
 1, 2, 4-Tri chlorobenzene
 Concen: 18.882 ug/l
 RT: 13.585 min Scan# 2050
 Delta R.T. 0.000 min
 Lab File: VX041551.D
 Acq: 16 May 2024 09:50

Instrument : MSVOA_X
 ClientSampleId :



Tgt Ion: 180 Resp: 63493

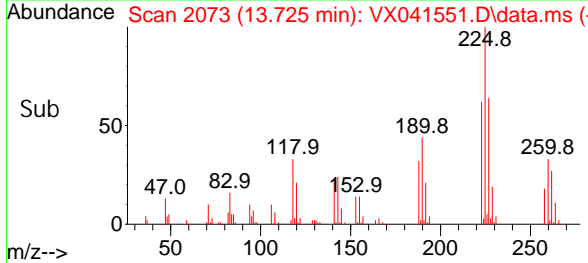
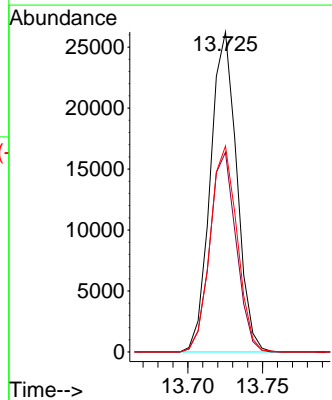
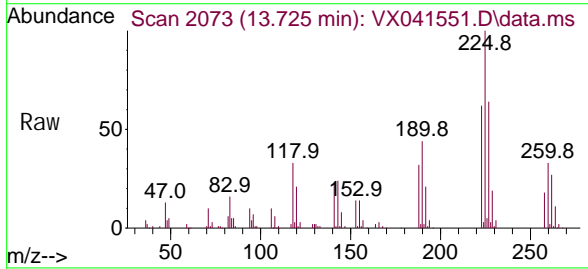
Ion	Ratio	Lower	Upper
180	100		
182	96.3	77.0	115.4
145	28.1	22.7	34.1

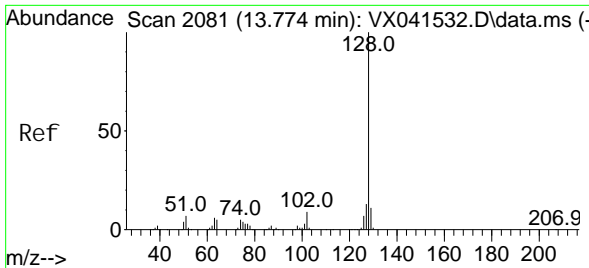


#90
 Hexachl orobutadi ene
 Concen: 19.613 ug/l
 RT: 13.725 min Scan# 2073
 Delta R.T. 0.000 min
 Lab File: VX041551.D
 Acq: 16 May 2024 09:50

Tgt Ion: 225 Resp: 32176

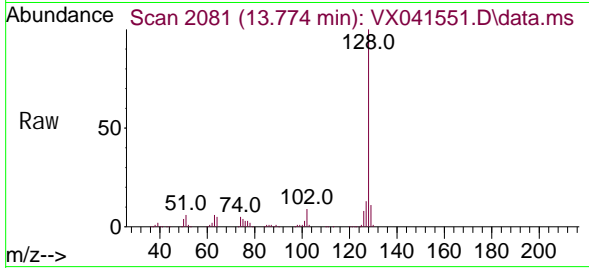
Ion	Ratio	Lower	Upper
225	100		
223	62.2	0.0	125.8
227	65.6	0.0	125.6



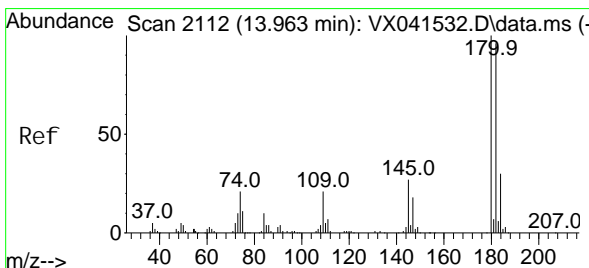
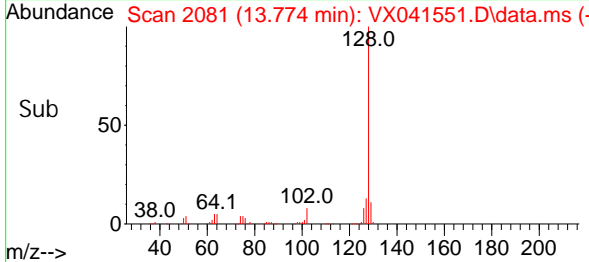
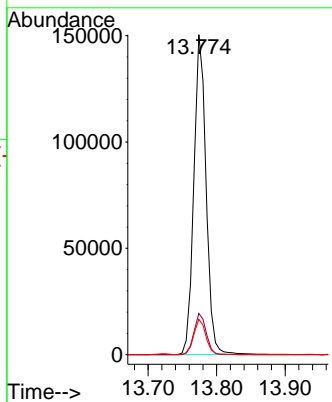


#91
 Naphthalene
 Concen: 18.632 ug/l
 RT: 13.774 min Scan# 2081
 Delta R.T. 0.000 min
 Lab File: VX041551.D
 Acq: 16 May 2024 09:50

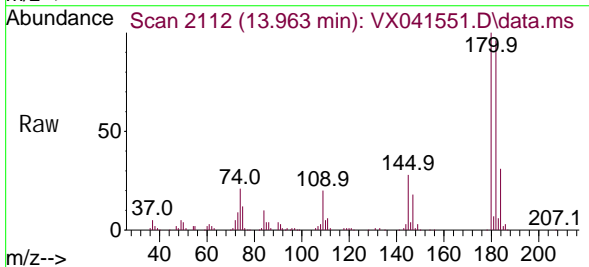
Instrument : MSVOA_X
 ClientSampleId :



Tgt Ion: 128 Resp: 187263
 Ion Ratio Lower Upper
 128 100
 127 12.9 10.6 16.0
 129 10.9 8.8 13.2



#92
 1,2,3-Trichlorobenzene
 Concen: 19.267 ug/l
 RT: 13.963 min Scan# 2112
 Delta R.T. 0.000 min
 Lab File: VX041551.D
 Acq: 16 May 2024 09:50



Tgt Ion: 180 Resp: 66193
 Ion Ratio Lower Upper
 180 100
 182 95.8 0.0 191.0
 145 29.1 0.0 58.6

