

Data Path : Z:\voasrv\HPCHEM1\MSVOA\_X\Data\VX051722\  
 Data File : VX028754.D  
 Acq On : 17 May 2022 13:48  
 Operator : JC/MD  
 Sample : N2862-11DL 5X  
 Misc : 5.0mL/MSVOA\_X/WATER  
 ALS Vial : 8 Sample Multiplier: 1

Instrument :  
 MSVOA\_X  
 ClientSampleId :  
 DUP051322DL

Quant Time: May 18 04:48:46 2022  
 Quant Method : Z:\voasrv\HPCHEM1\MSVOA\_X\Method\82X051222W.M  
 Quant Title : SW846 8260  
 QLast Update : Thu May 12 14:58:53 2022  
 Response via : Initial Calibration

Compound	R.T.	QIon	Response	Conc	Units	Dev(Min)
Internal Standards						
1) Pentafluorobenzene	5.556	168	257319	50.000	ug/l	# 0.00
34) 1,4-Difluorobenzene	6.763	114	465478	50.000	ug/l	0.00
63) Chlorobenzene-d5	10.055	117	502788	50.000	ug/l	0.00
72) 1,4-Dichlorobenzene-d4	12.024	152	211743	50.000	ug/l	0.00
System Monitoring Compounds						
33) 1,2-Dichloroethane-d4	5.958	65	179545	50.902	ug/l	0.00
Spiked Amount	50.000	Range 61 - 141	Recovery	=	101.800%	
35) Dibromofluoromethane	5.391	113	153845	50.445	ug/l	0.00
Spiked Amount	50.000	Range 69 - 133	Recovery	=	100.900%	
50) Toluene-d8	8.647	98	565056	49.143	ug/l	0.00
Spiked Amount	50.000	Range 65 - 126	Recovery	=	98.280%	
62) 4-Bromofluorobenzene	11.079	95	214744	50.003	ug/l	0.00
Spiked Amount	50.000	Range 58 - 135	Recovery	=	100.000%	
Target Compounds						
						Qvalue
5) Bromomethane	1.618	94	677	Below Cal	#	77
6) Chloroethane	1.691	64	230	Below Cal	#	46
10) Methyl Iodide	2.459	142	936	0.273	ug/l	# 91
11) Tert butyl alcohol	2.947	59	7804	2.527	ug/l	# 82
16) Acetone	2.374	43	1568	1.036	ug/l	# 77
25) 2-Butanone	4.568	43	606	0.255	ug/l	# 93
31) Cyclohexane	5.550	56	6803	1.390	ug/l	# 10
36) 1,1-Dichloropropene	5.550	75	21729	4.744	ug/l	# 49
38) Carbon Tetrachloride	5.556	117	26572	5.764	ug/l	# 16
39) Methylcyclohexane	7.385	83	1751	0.333	ug/l	# 90
52) Toluene	8.720	92	6114	0.722	ug/l	95
53) t-1,3-Dichloropropene	8.720	75	28	1.646	ug/l	# 1
55) 1,1,2-Trichloroethane	9.104	97	1385	0.401	ug/l	# 19
59) 2-Hexanone	9.458	43	981	0.256	ug/l	# 82
61) 1,2-Dibromoethane	9.616	107	7049	1.944	ug/l	# 97
67) Ethyl Benzene	10.195	91	10614	0.555	ug/l	100
68) m/p-Xylenes	10.299	106	99908	13.423	ug/l	97
69) o-Xylene	10.640	106	230587	31.465	ug/l	97
70) Styrene	10.647	104	12028	1.011	ug/l	# 1
73) Isopropylbenzene	10.964	105	4590	0.286	ug/l	98
76) 1,2,3-Trichloropropane	11.079	75	114540	23.098	ug/l	# 38
78) n-propylbenzene	11.305	91	6433	0.346	ug/l	100
79) 2-Chlorotoluene	11.378	91	16132	1.417	ug/l	# 41
80) 1,3,5-Trimethylbenzene	11.451	105	96883	7.241	ug/l	100
81) trans-1,4-Dichloro-2-b...	11.079	75	114540	67.444	ug/l	# 15
82) 4-Chlorotoluene	11.451	91	11430	0.868	ug/l	# 47
83) tert-Butylbenzene	11.969	119	10133	0.782	ug/l	72
84) 1,2,4-Trimethylbenzene	11.750	105	140461	10.469	ug/l	99
85) sec-Butylbenzene	11.750	105	140461	8.790	ug/l	# 56
86) p-Isopropyltoluene	11.969	119	10133	0.756	ug/l	95
89) n-Butylbenzene	12.323	91	9298	0.800	ug/l	# 1
90) Hexachloroethane	12.536	117	2349	1.083	ug/l	# 10
92) 1,2-Dibromo-3-Chloropr...	12.963	75	391	0.332	ug/l	# 1
95) Naphthalene	13.780	128	79985	5.316	ug/l	99

Data Path : Z:\voasrv\HPCHEM1\MSVOA\_X\Data\VX051722\  
Data File : VX028754.D  
Acq On : 17 May 2022 13:48  
Operator : JC/MD  
Sample : N2862-11DL 5X  
Misc : 5.0mL/MSVOA\_X/WATER  
ALS Vial : 8 Sample Multiplier: 1

Instrument :  
MSVOA\_X  
ClientSampleId :  
DUP051322DL

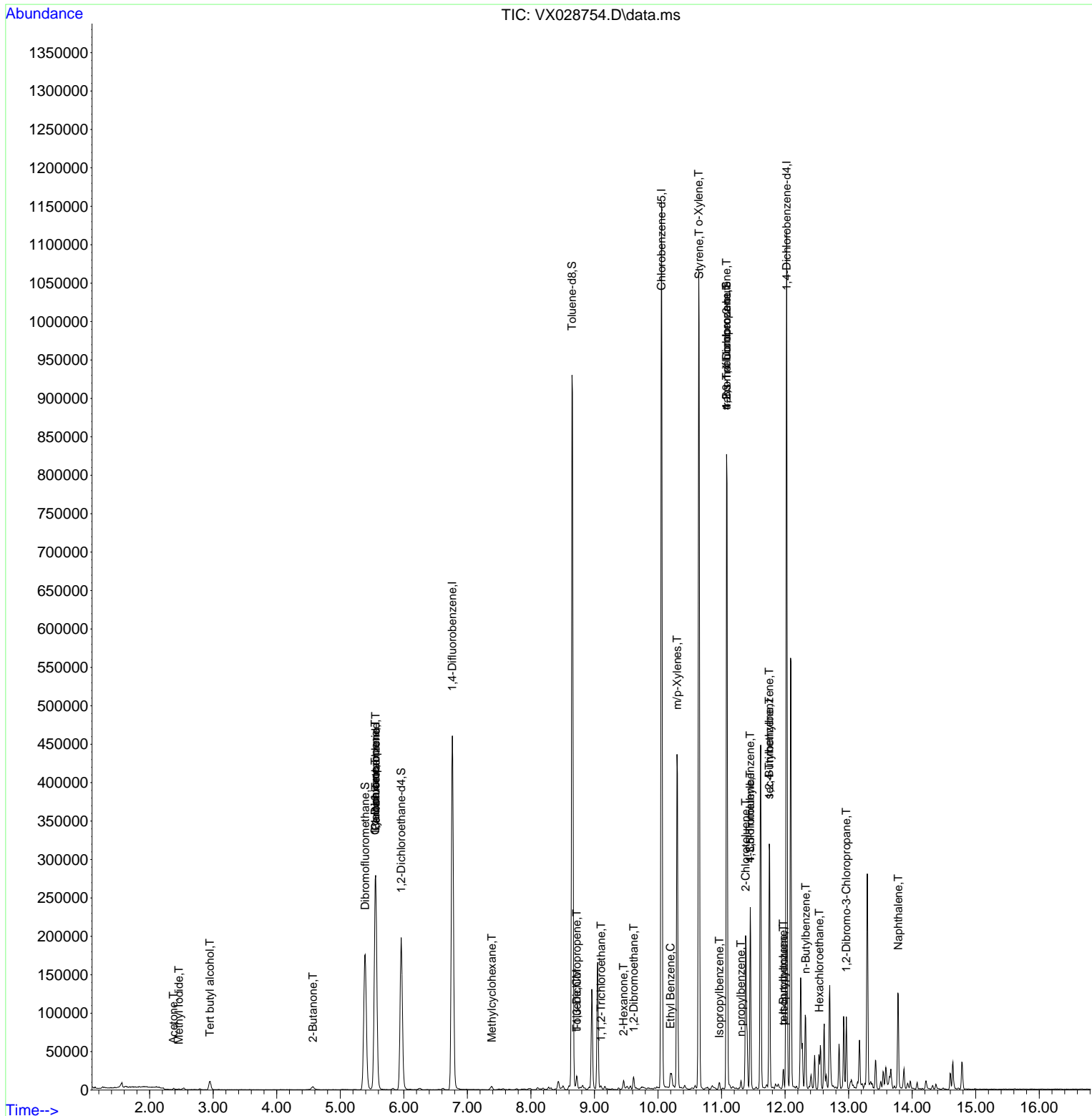
Quant Time: May 18 04:48:46 2022  
Quant Method : Z:\voasrv\HPCHEM1\MSVOA\_X\Method\82X051222W.M  
Quant Title : SW846 8260  
QLast Update : Thu May 12 14:58:53 2022  
Response via : Initial Calibration

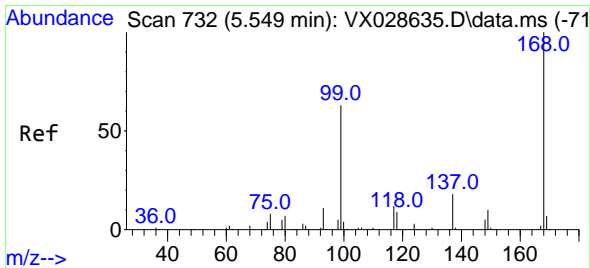
Compound	R.T.	QIon	Response	Conc	Units	Dev(Min)
-----						
(#) = qualifier out of range (m) = manual integration (+) = signals summed						

Data Path : Z:\voasrv\HPCHEM1\MSVOA\_X\Data\VX051722\  
 Data File : VX028754.D  
 Acq On : 17 May 2022 13:48  
 Operator : JC/MD  
 Sample : N2862-11DL 5X  
 Misc : 5.0mL/MSVOA\_X/WATER  
 ALS Vial : 8 Sample Multiplier: 1

**Instrument :**  
 MSVOA\_X  
**ClientSampleId :**  
 DUP051322DL

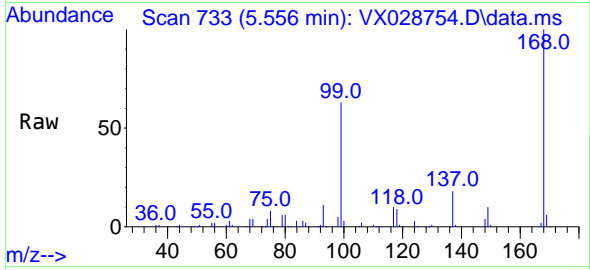
Quant Time: May 18 04:48:46 2022  
 Quant Method : Z:\voasrv\HPCHEM1\MSVOA\_X\Method\82X051222W.M  
 Quant Title : SW846 8260  
 QLast Update : Thu May 12 14:58:53 2022  
 Response via : Initial Calibration



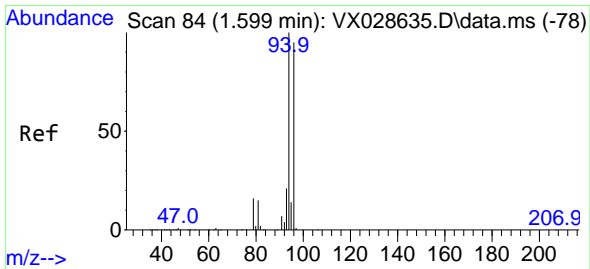
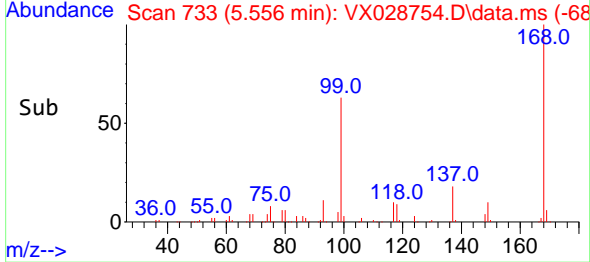
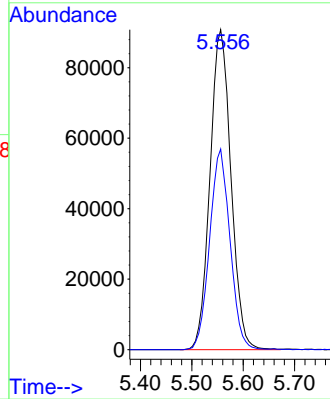


#1  
 Pentafluorobenzene  
 Concen: 50.000 ug/l  
 RT: 5.556 min Scan# 71  
 Delta R.T. 0.007 min  
 Lab File: VX028754.D  
 Acq: 17 May 2022 13:48

Instrument :  
 MSVOA\_X  
 ClientSampleId :  
 DUP051322DL

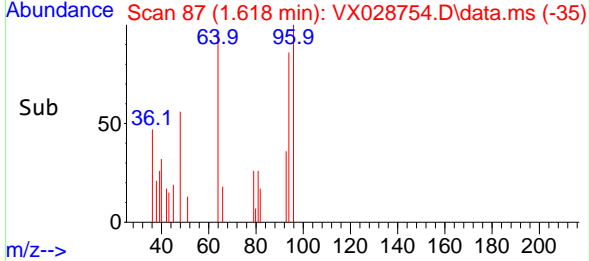
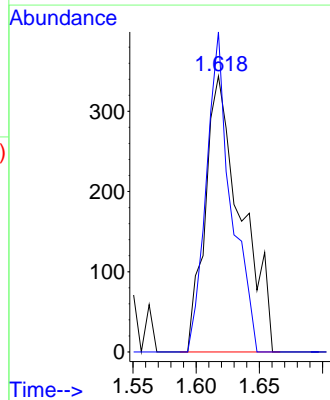
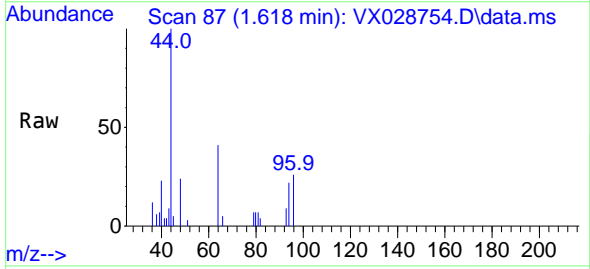


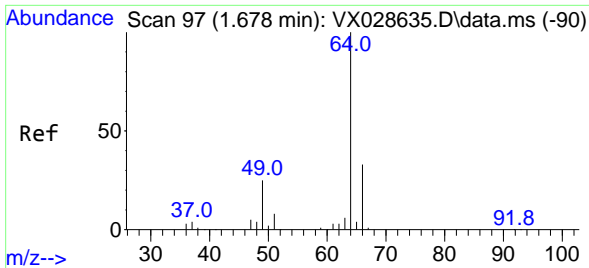
Tgt Ion:168 Resp: 257319  
 Ion Ratio Lower Upper  
 168 100  
 99 62.7 41.7 62.5#



#5  
 Bromomethane  
 Concen: Below Cal  
 RT: 1.618 min Scan# 87  
 Delta R.T. 0.019 min  
 Lab File: VX028754.D  
 Acq: 17 May 2022 13:48

Tgt Ion: 94 Resp: 677  
 Ion Ratio Lower Upper  
 94 100  
 96 116.0 75.3 112.9#

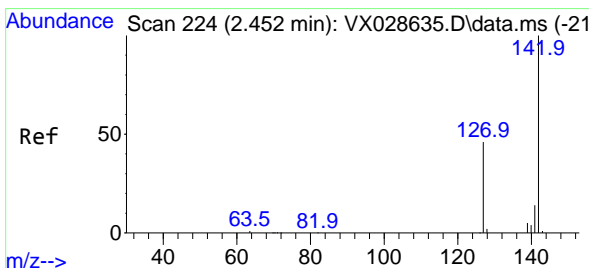
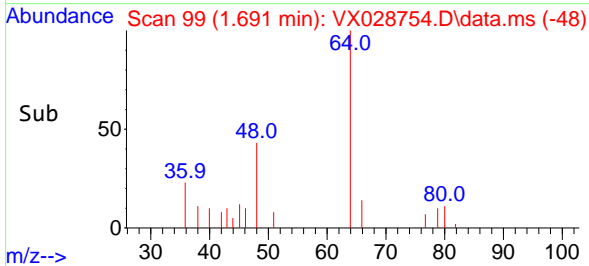
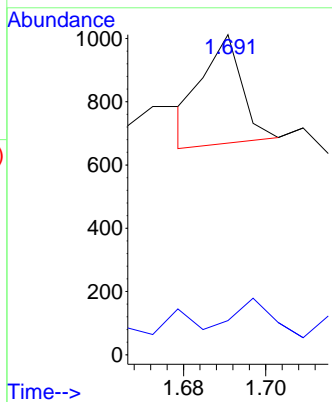
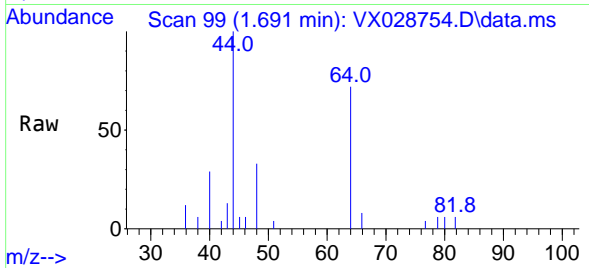




#6  
 Chloroethane  
 Concen: Below Cal  
 RT: 1.691 min Scan# 91  
 Delta R.T. 0.013 min  
 Lab File: VX028754.D  
 Acq: 17 May 2022 13:48

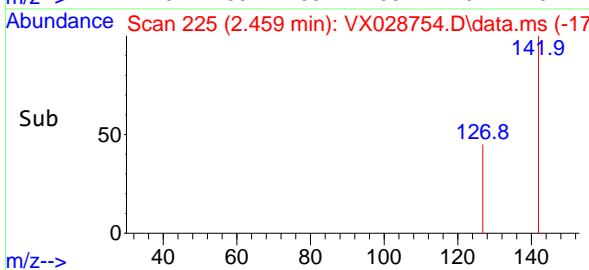
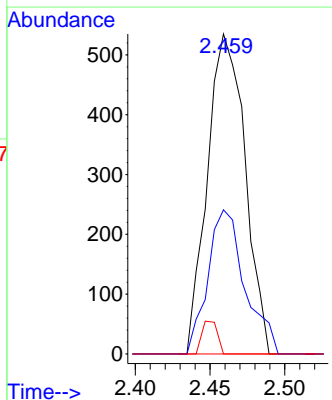
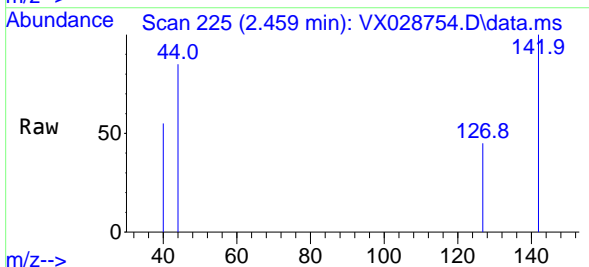
Instrument : MSVOA\_X  
 ClientSampleId : DUP051322DL

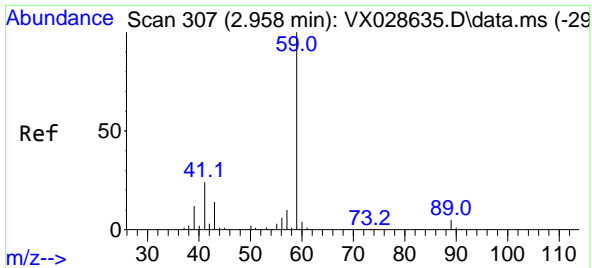
Tgt Ion: 64 Resp: 230  
 Ion Ratio Lower Upper  
 64 100  
 66 1.8 25.3 37.9#



#10  
 Methyl Iodide  
 Concen: 0.273 ug/l  
 RT: 2.459 min Scan# 225  
 Delta R.T. 0.007 min  
 Lab File: VX028754.D  
 Acq: 17 May 2022 13:48

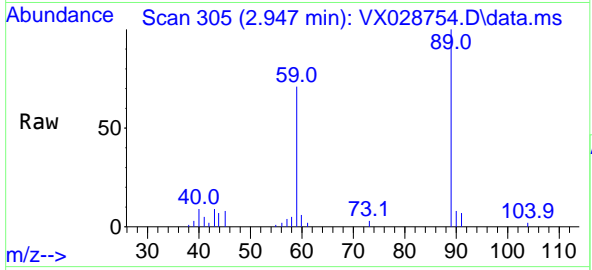
Tgt Ion: 142 Resp: 936  
 Ion Ratio Lower Upper  
 142 100  
 127 44.6 33.9 50.9  
 141 4.2 11.4 17.2#



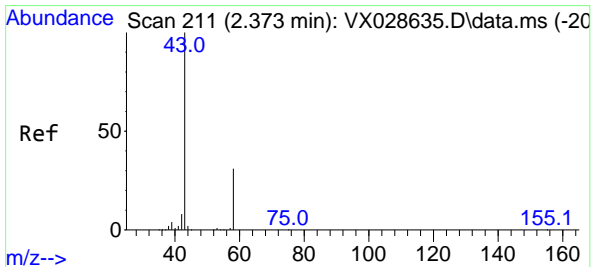
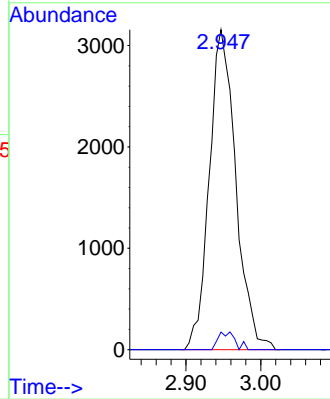
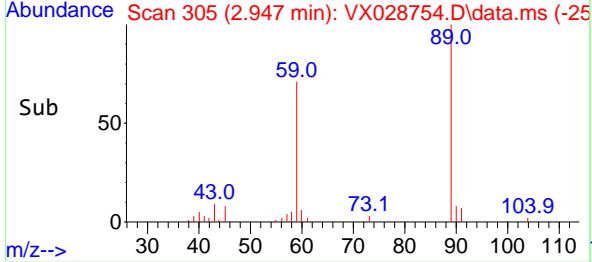


#11  
 Tert butyl alcohol  
 Concen: 2.527 ug/l  
 RT: 2.947 min Scan# 307  
 Delta R.T. -0.011 min  
 Lab File: VX028754.D  
 Acq: 17 May 2022 13:48

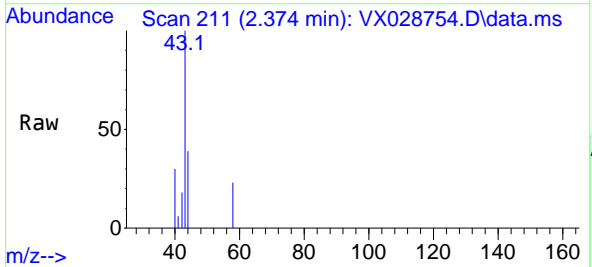
Instrument : MSVOA\_X  
 ClientSampleId : DUP051322DL



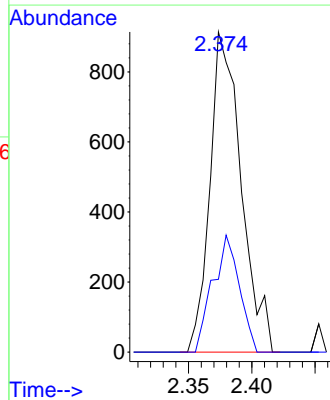
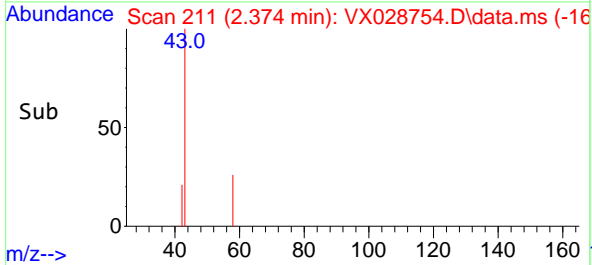
Tgt Ion: 59 Resp: 7804  
 Ion Ratio Lower Upper  
 59 100  
 57 3.5 8.3 12.5#

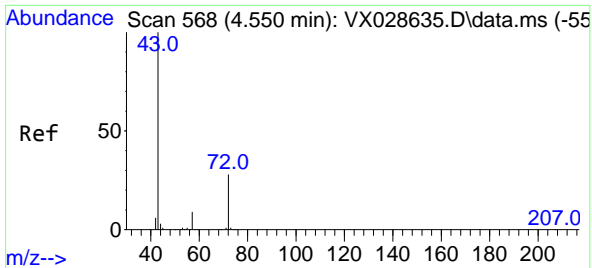


#16  
 Acetone  
 Concen: 1.036 ug/l  
 RT: 2.374 min Scan# 211  
 Delta R.T. 0.001 min  
 Lab File: VX028754.D  
 Acq: 17 May 2022 13:48



Tgt Ion: 43 Resp: 1568  
 Ion Ratio Lower Upper  
 43 100  
 58 22.8 28.8 43.2#



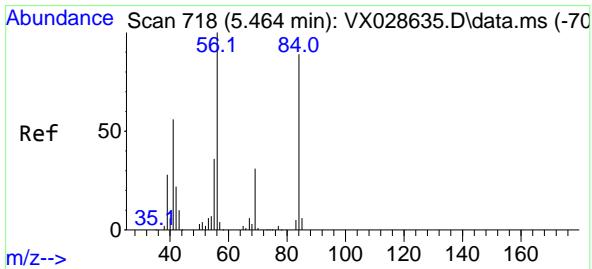
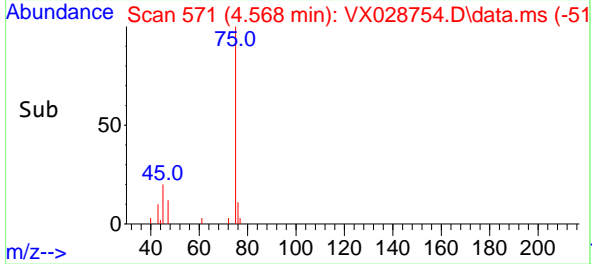
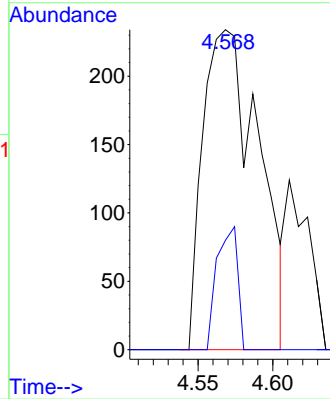
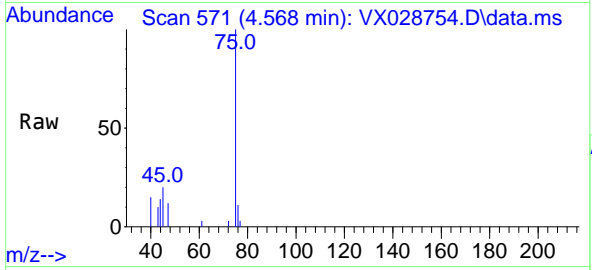


#25  
 2-Butanone  
 Concen: 0.255 ug/l  
 RT: 4.568 min Scan# 51  
 Delta R.T. 0.018 min  
 Lab File: VX028754.D  
 Acq: 17 May 2022 13:48

Instrument :  
 MSVOA\_X  
 ClientSampleId :  
 DUP051322DL

Tgt Ion: 43 Resp: 606

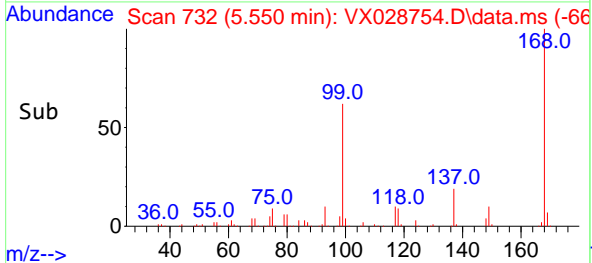
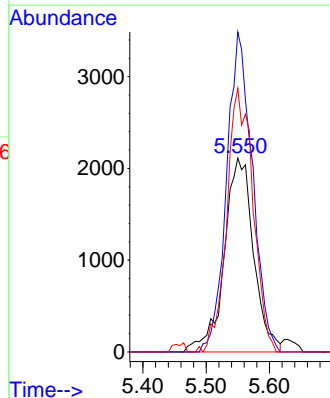
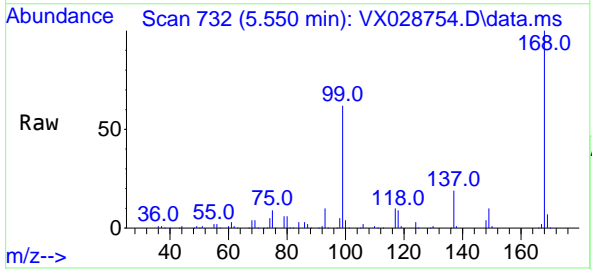
Ion	Ratio	Lower	Upper
43	100		
72	34.2	24.4	36.6

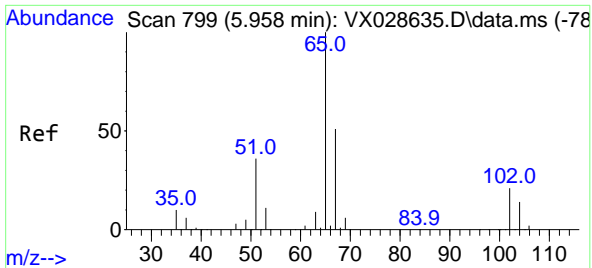


#31  
 Cyclohexane  
 Concen: 1.390 ug/l  
 RT: 5.550 min Scan# 732  
 Delta R.T. 0.086 min  
 Lab File: VX028754.D  
 Acq: 17 May 2022 13:48

Tgt Ion: 56 Resp: 6803

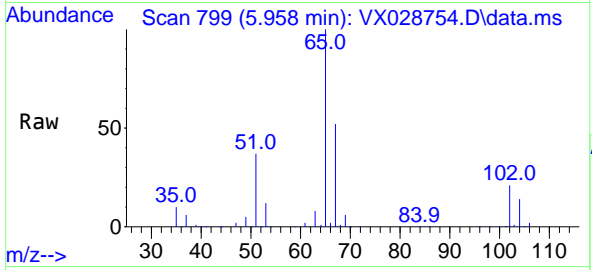
Ion	Ratio	Lower	Upper
56	100		
69	165.0	26.7	40.1#
84	136.0	77.2	115.8#



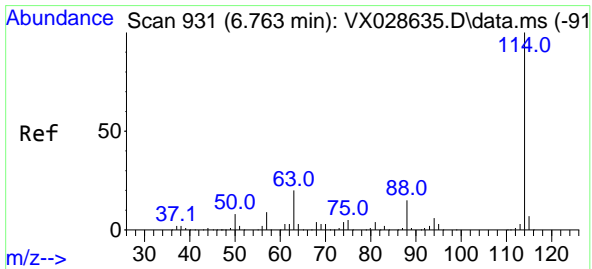
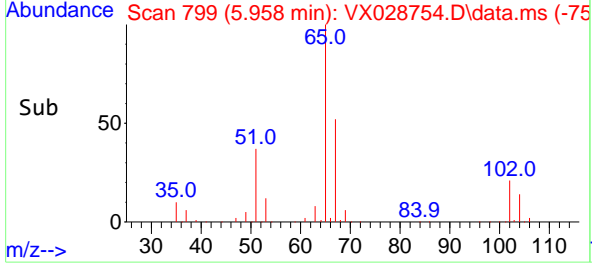
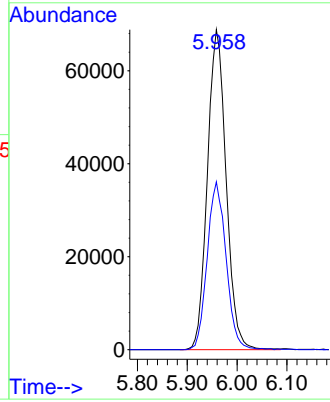


#33  
 1,2-Dichloroethane-d4  
 Concen: 50.902 ug/l  
 RT: 5.958 min Scan# 799  
 Delta R.T. 0.000 min  
 Lab File: VX028754.D  
 Acq: 17 May 2022 13:48

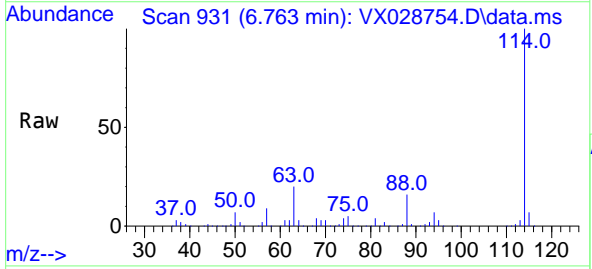
Instrument : MSVOA\_X  
 ClientSampleId : DUP051322DL



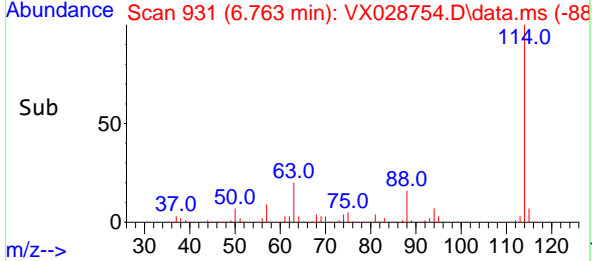
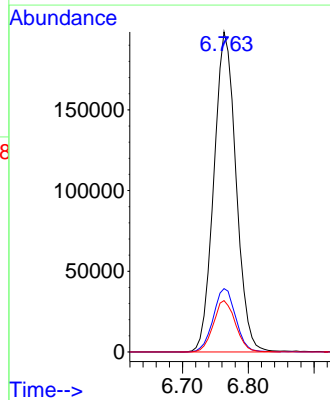
Tgt Ion: 65 Resp: 179545  
 Ion Ratio Lower Upper  
 65 100  
 67 52.7 0.0 107.4



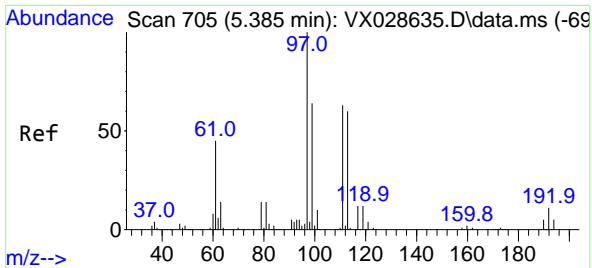
#34  
 1,4-Difluorobenzene  
 Concen: 50.000 ug/l  
 RT: 6.763 min Scan# 931  
 Delta R.T. 0.000 min  
 Lab File: VX028754.D  
 Acq: 17 May 2022 13:48



Tgt Ion: 114 Resp: 465478  
 Ion Ratio Lower Upper  
 114 100  
 63 19.8 0.0 36.8  
 88 16.0 0.0 32.4

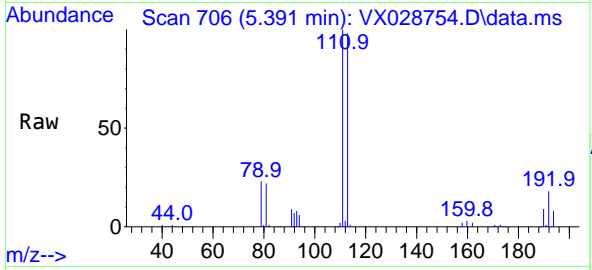




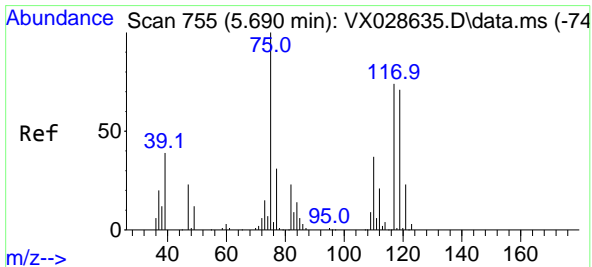
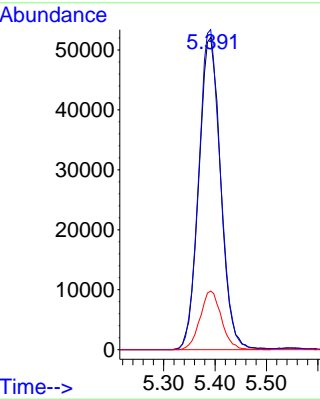
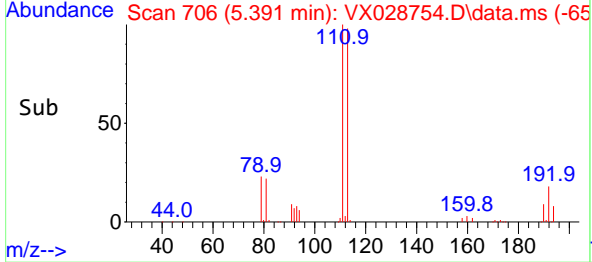


#35  
 Dibromofluoromethane  
 Concen: 50.445 ug/l  
 RT: 5.391 min Scan# 705  
 Delta R.T. 0.006 min  
 Lab File: VX028754.D  
 Acq: 17 May 2022 13:48

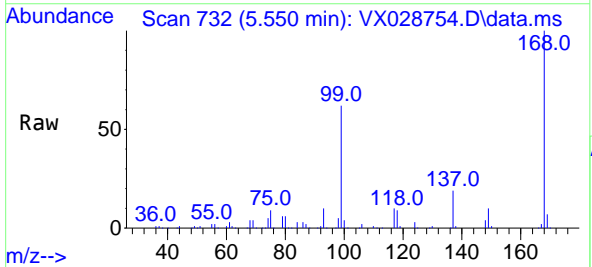
Instrument : MSVOA\_X  
 ClientSampleId : DUP051322DL



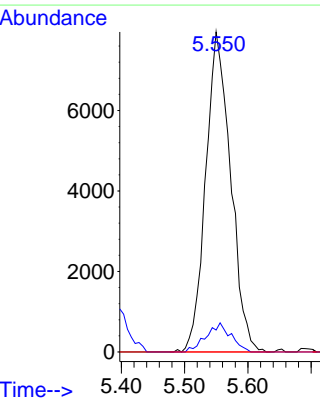
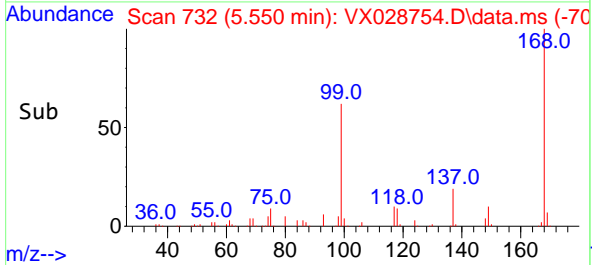
Tgt Ion:113 Resp: 153845  
 Ion Ratio Lower Upper  
 113 100  
 111 102.0 82.8 124.2  
 192 18.3 16.9 25.3

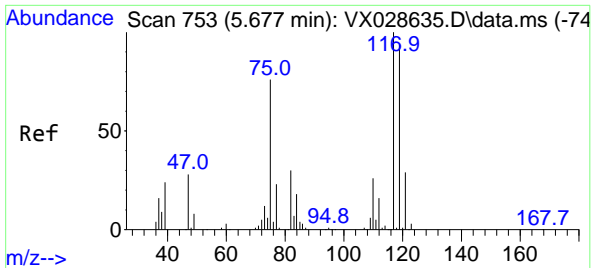


#36  
 1,1-Dichloropropene  
 Concen: 4.744 ug/l  
 RT: 5.550 min Scan# 732  
 Delta R.T. -0.140 min  
 Lab File: VX028754.D  
 Acq: 17 May 2022 13:48



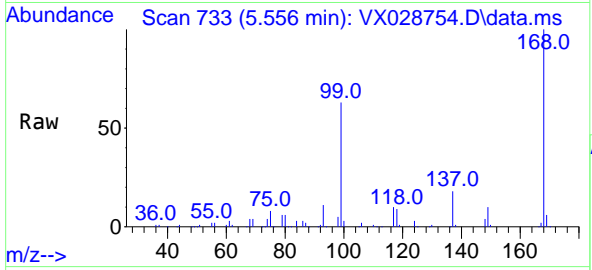
Tgt Ion: 75 Resp: 21729  
 Ion Ratio Lower Upper  
 75 100  
 110 9.0 18.3 54.8#  
 77 0.0 24.8 37.2#



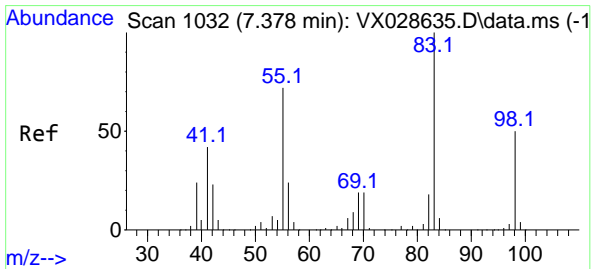
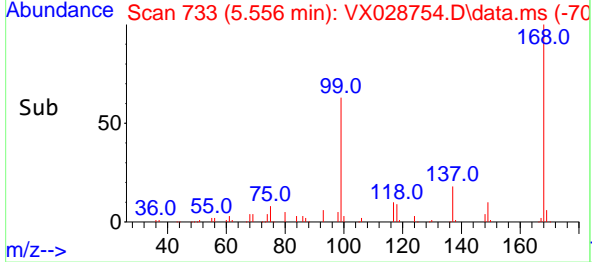
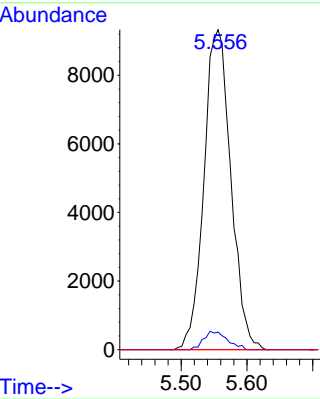


#38  
 Carbon Tetrachloride  
 Concen: 5.764 ug/l  
 RT: 5.556 min Scan# 711  
 Delta R.T. -0.121 min  
 Lab File: VX028754.D  
 Acq: 17 May 2022 13:48

Instrument : MSVOA\_X  
 ClientSampleId : DUP051322DL

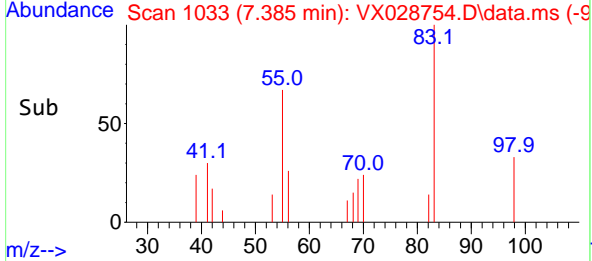
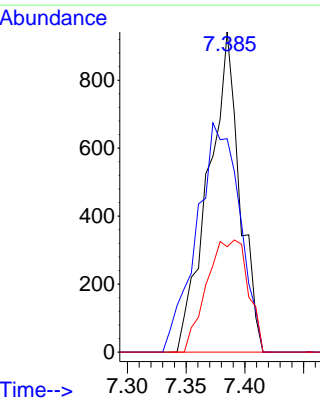
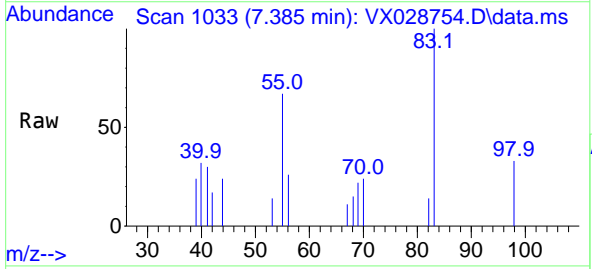


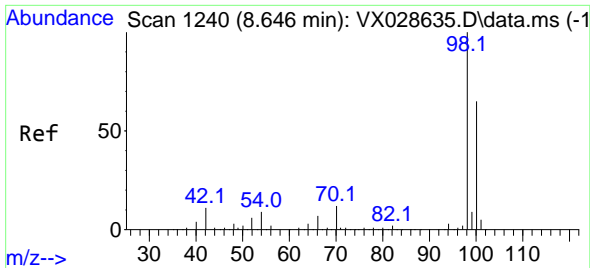
Tgt Ion:117 Resp: 26572  
 Ion Ratio Lower Upper  
 117 100  
 119 5.5 77.3 115.9#  
 121 0.0 24.2 36.2#



#39  
 Methylcyclohexane  
 Concen: 0.333 ug/l  
 RT: 7.385 min Scan# 1033  
 Delta R.T. 0.007 min  
 Lab File: VX028754.D  
 Acq: 17 May 2022 13:48

Tgt Ion: 83 Resp: 1751  
 Ion Ratio Lower Upper  
 83 100  
 55 66.7 54.6 81.8  
 98 32.9 37.4 56.2#

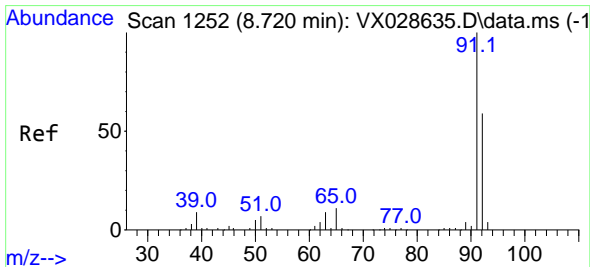
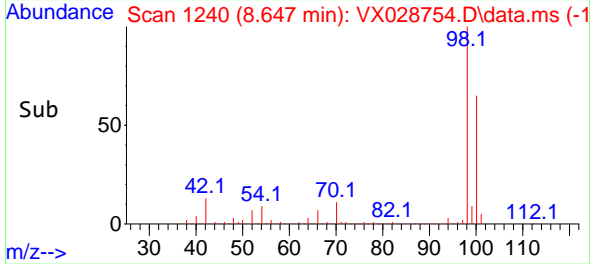
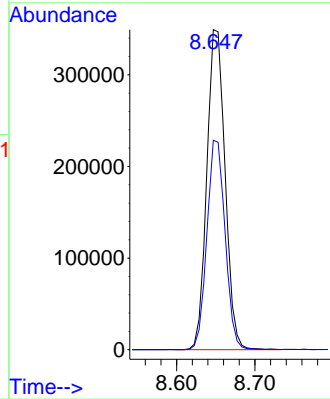
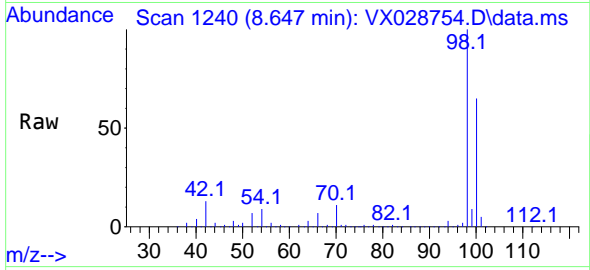




#50  
 Toluene-d8  
 Concen: 49.143 ug/l  
 RT: 8.647 min Scan# 111  
 Delta R.T. 0.001 min  
 Lab File: VX028754.D  
 Acq: 17 May 2022 13:48

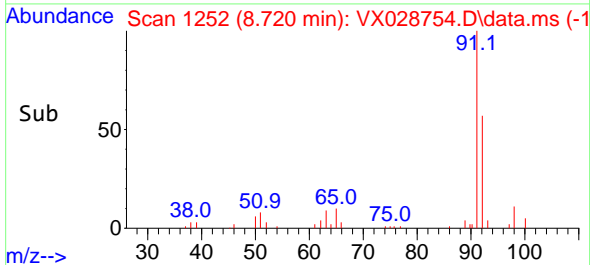
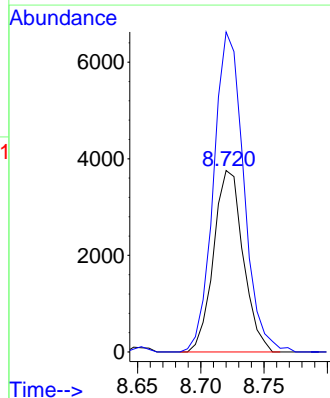
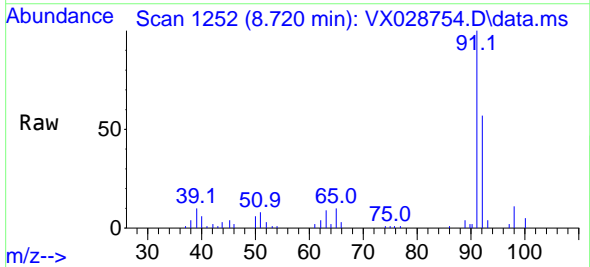
Instrument :  
 MSVOA\_X  
 ClientSampleId :  
 DUP051322DL

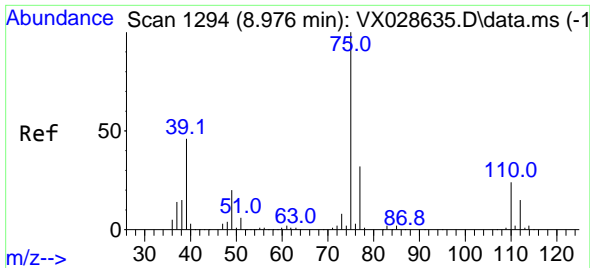
Tgt Ion: 98 Resp: 565056  
 Ion Ratio Lower Upper  
 98 100  
 100 65.3 52.6 78.8



#52  
 Toluene  
 Concen: 0.722 ug/l  
 RT: 8.720 min Scan# 1252  
 Delta R.T. 0.000 min  
 Lab File: VX028754.D  
 Acq: 17 May 2022 13:48

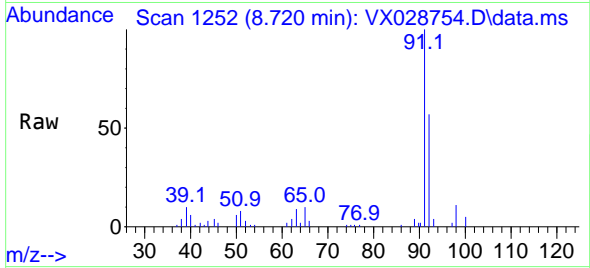
Tgt Ion: 92 Resp: 6114  
 Ion Ratio Lower Upper  
 92 100  
 91 179.4 137.5 206.3



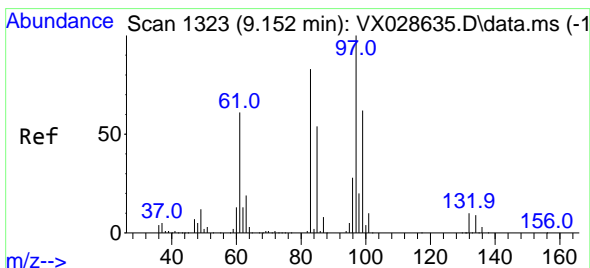
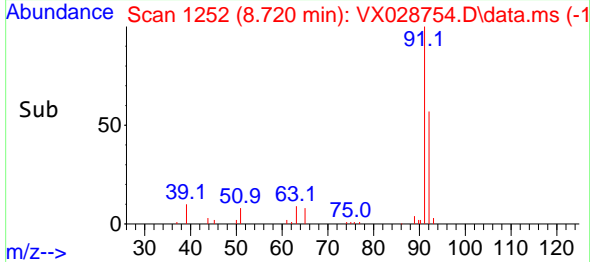
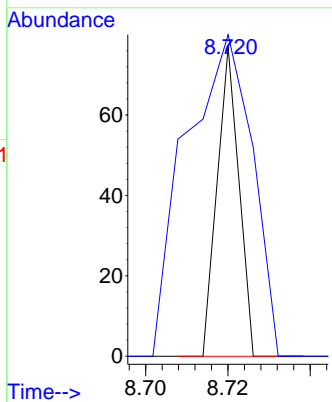


#53  
 t-1,3-Dichloropropene  
 Concen: 1.646 ug/l  
 RT: 8.720 min Scan# 1111  
 Delta R.T. -0.256 min  
 Lab File: VX028754.D  
 Acq: 17 May 2022 13:48

Instrument : MSVOA\_X  
 ClientSampleId : DUP051322DL

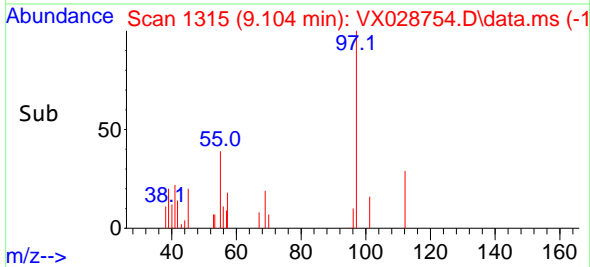
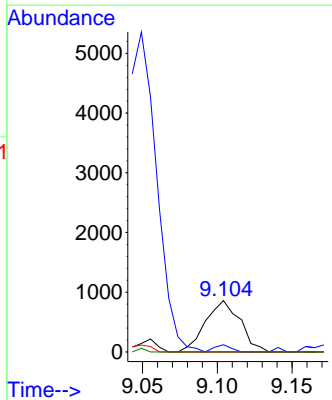
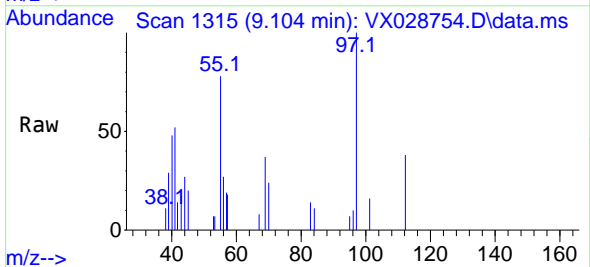


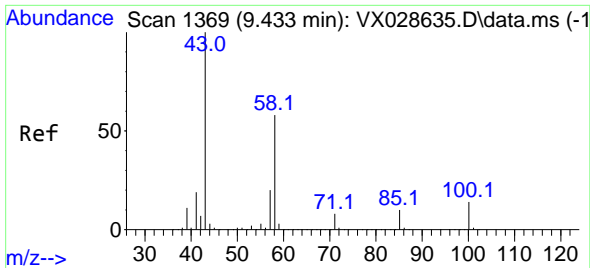
Tgt Ion: 75 Resp: 28  
 Ion Ratio Lower Upper  
 75 100  
 77 103.9 25.4 38.0#



#55  
 1,1,2-Trichloroethane  
 Concen: 0.401 ug/l  
 RT: 9.104 min Scan# 1315  
 Delta R.T. -0.048 min  
 Lab File: VX028754.D  
 Acq: 17 May 2022 13:48

Tgt Ion: 97 Resp: 1385  
 Ion Ratio Lower Upper  
 97 100  
 83 5.3 66.2 99.4#  
 85 0.0 42.9 64.3#  
 99 0.0 49.0 73.6#

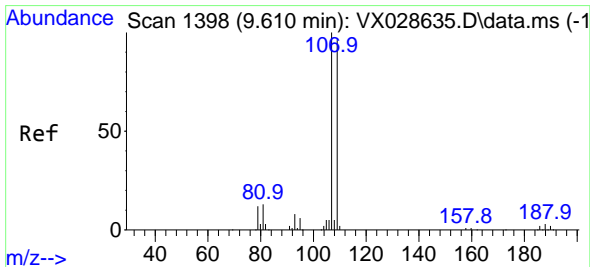
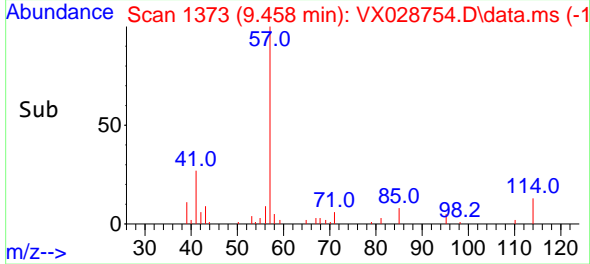
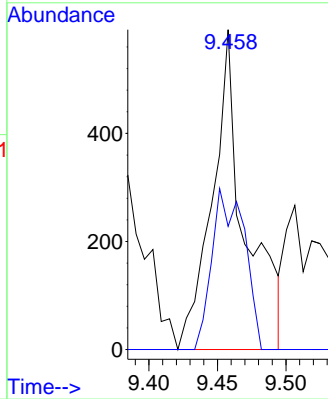
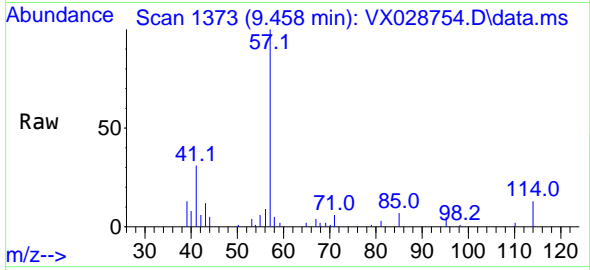




#59  
 2-Hexanone  
 Concen: 0.256 ug/l  
 RT: 9.458 min Scan# 111  
 Delta R.T. 0.025 min  
 Lab File: VX028754.D  
 Acq: 17 May 2022 13:48

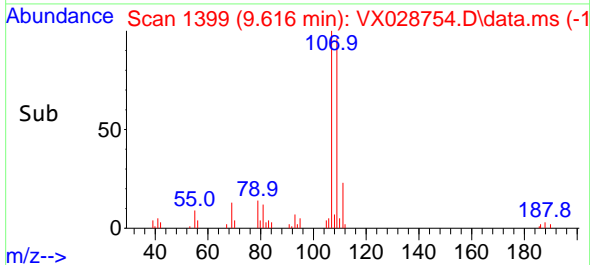
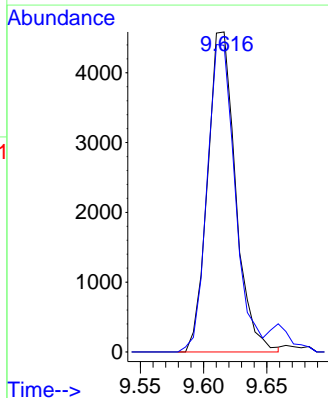
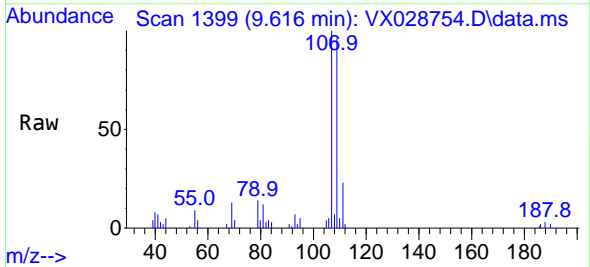
Instrument : MSVOA\_X  
 ClientSampleId : DUP051322DL

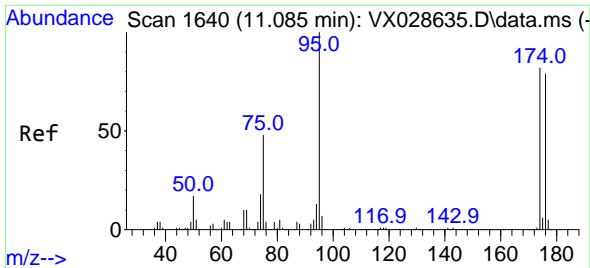
Tgt Ion: 43 Resp: 981  
 Ion Ratio Lower Upper  
 43 100  
 58 49.9 31.9 95.7



#61  
 1,2-Dibromoethane  
 Concen: 1.944 ug/l  
 RT: 9.616 min Scan# 1399  
 Delta R.T. 0.006 min  
 Lab File: VX028754.D  
 Acq: 17 May 2022 13:48

Tgt Ion: 107 Resp: 7049  
 Ion Ratio Lower Upper  
 107 100  
 109 96.2 74.4 111.6

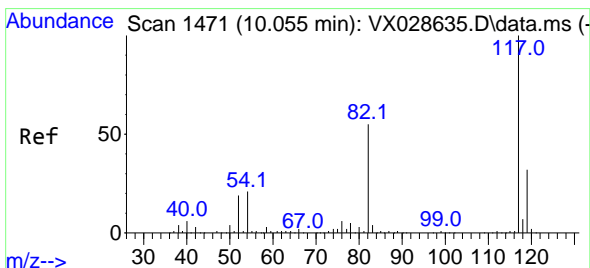
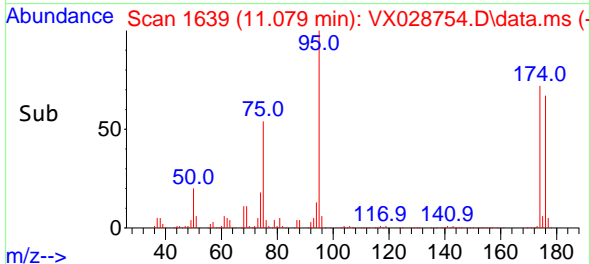
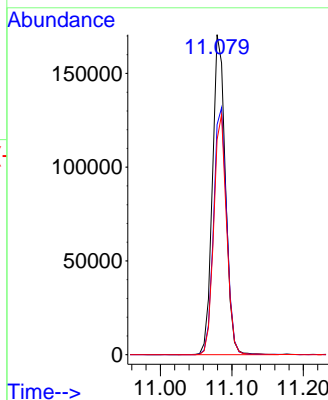
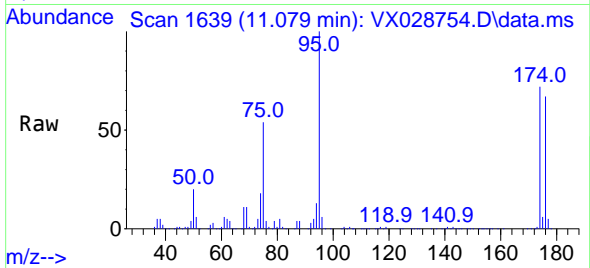




#62  
 4-Bromofluorobenzene  
 Concen: 50.003 ug/l  
 RT: 11.079 min Scan# 1639  
 Delta R.T. -0.006 min  
 Lab File: VX028754.D  
 Acq: 17 May 2022 13:48

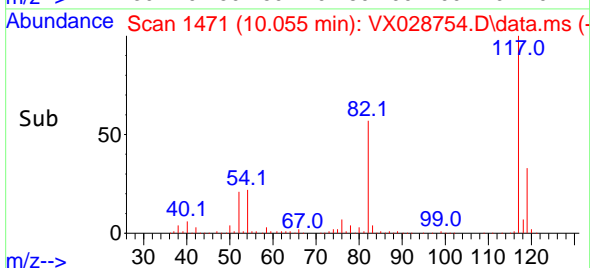
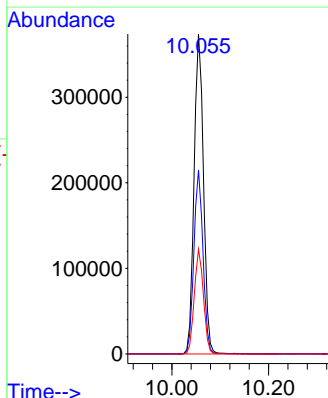
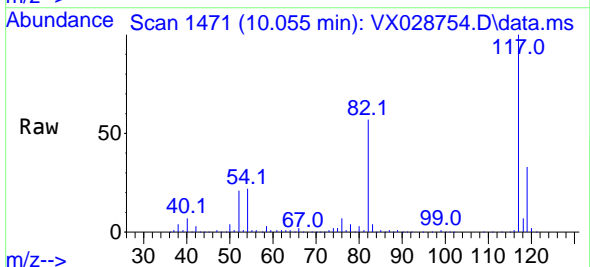
Instrument : MSVOA\_X  
 ClientSampleId : DUP051322DL

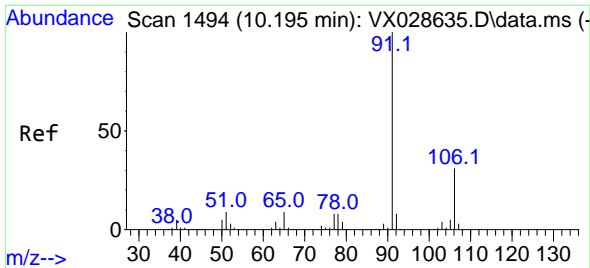
Tgt Ion: 95 Resp: 214744  
 Ion Ratio Lower Upper  
 95 100  
 174 78.1 0.0 163.0  
 176 74.1 0.0 155.0



#63  
 Chlorobenzene-d5  
 Concen: 50.000 ug/l  
 RT: 10.055 min Scan# 1471  
 Delta R.T. 0.000 min  
 Lab File: VX028754.D  
 Acq: 17 May 2022 13:48

Tgt Ion: 117 Resp: 502788  
 Ion Ratio Lower Upper  
 117 100  
 82 57.5 41.8 62.8  
 119 32.7 24.8 37.2

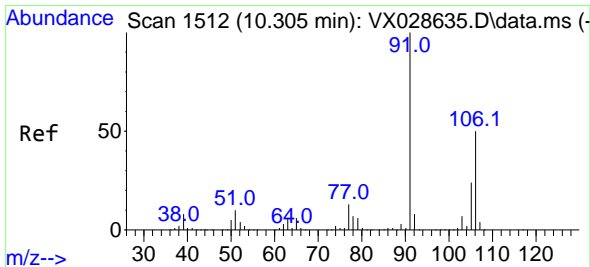
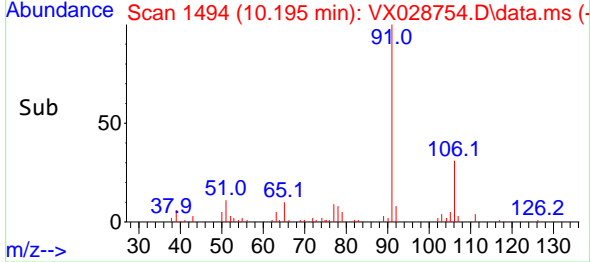
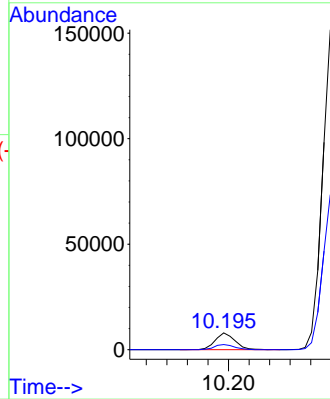
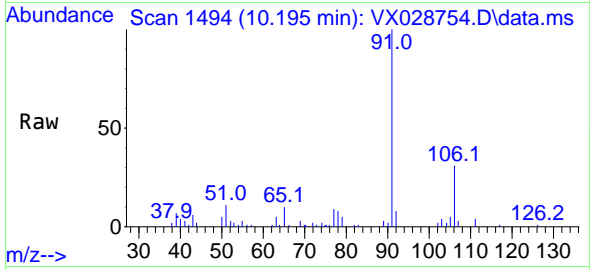




#67  
 Ethyl Benzene  
 Concen: 0.555 ug/l  
 RT: 10.195 min Scan# 1494  
 Delta R.T. 0.000 min  
 Lab File: VX028754.D  
 Acq: 17 May 2022 13:48

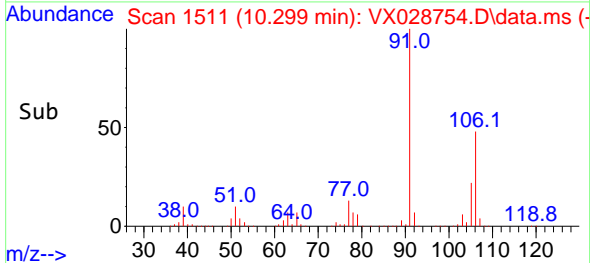
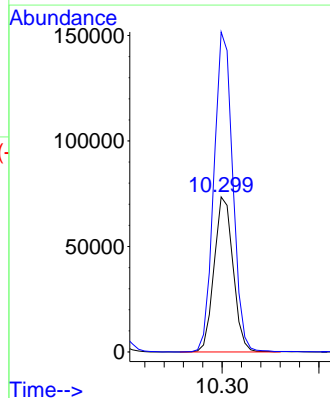
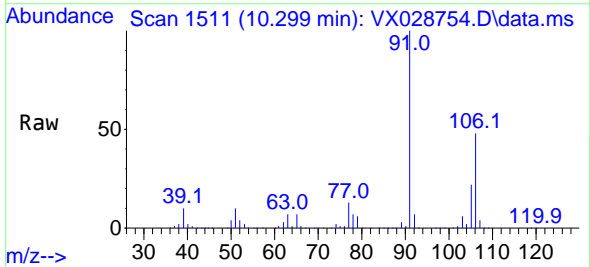
Instrument : MSVOA\_X  
 ClientSampleId : DUP051322DL

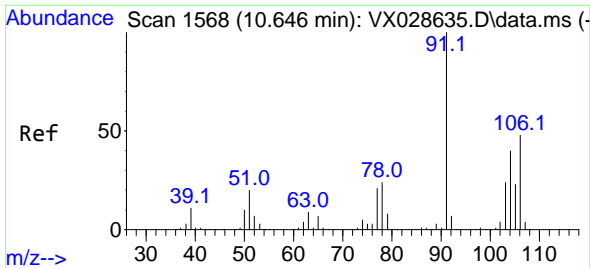
Tgt Ion: 91 Resp: 10614  
 Ion Ratio Lower Upper  
 91 100  
 106 30.8 24.6 36.8



#68  
 m/p-Xylenes  
 Concen: 13.423 ug/l  
 RT: 10.299 min Scan# 1511  
 Delta R.T. -0.006 min  
 Lab File: VX028754.D  
 Acq: 17 May 2022 13:48

Tgt Ion: 106 Resp: 99908  
 Ion Ratio Lower Upper  
 106 100  
 91 205.5 160.4 240.6

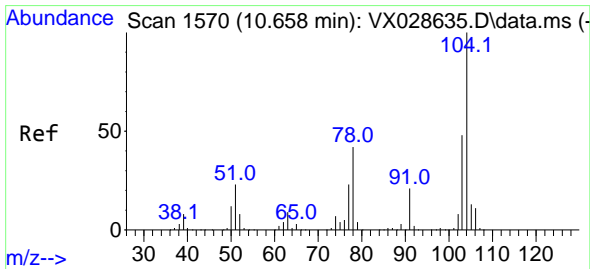
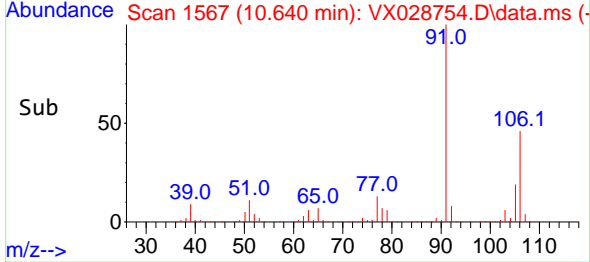
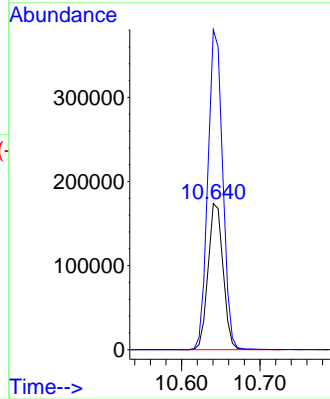
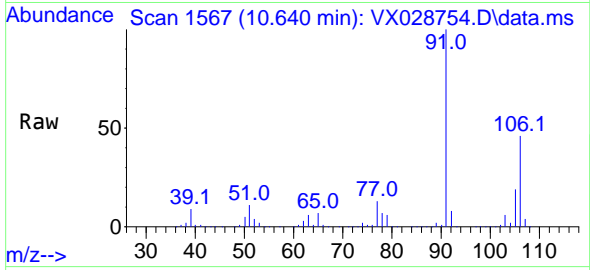




#69  
 o-Xylene  
 Concen: 31.465 ug/l  
 RT: 10.640 min Scan# 1568  
 Delta R.T. -0.006 min  
 Lab File: VX028754.D  
 Acq: 17 May 2022 13:48

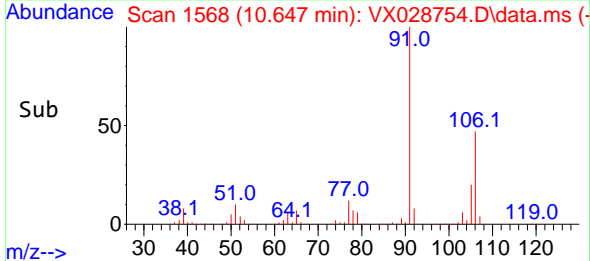
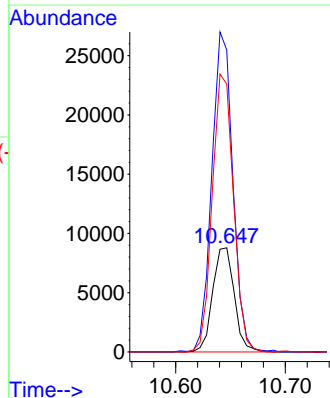
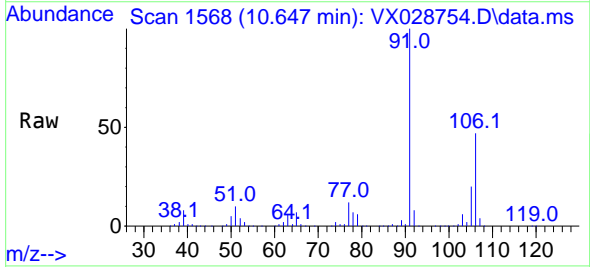
Instrument : MSVOA\_X  
 ClientSampleId : DUP051322DL

Tgt Ion:106 Resp: 230587  
 Ion Ratio Lower Upper  
 106 100  
 91 216.7 106.1 318.1

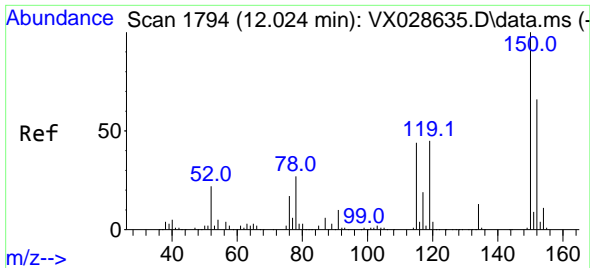


#70  
 Styrene  
 Concen: 1.011 ug/l  
 RT: 10.647 min Scan# 1568  
 Delta R.T. -0.011 min  
 Lab File: VX028754.D  
 Acq: 17 May 2022 13:48

Tgt Ion:104 Resp: 12028  
 Ion Ratio Lower Upper  
 104 100  
 78 299.7 38.6 57.8#  
 103 262.2 43.8 65.8#

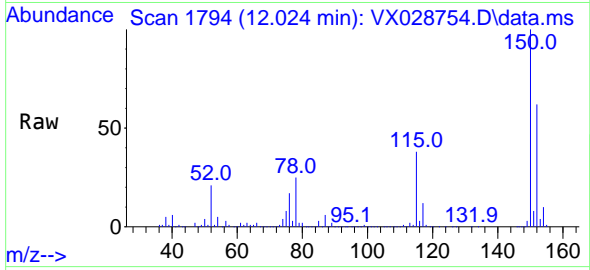




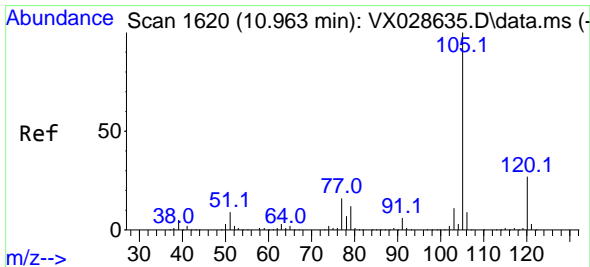
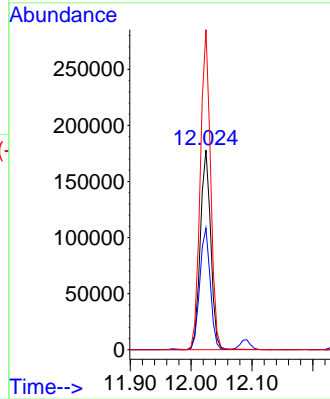
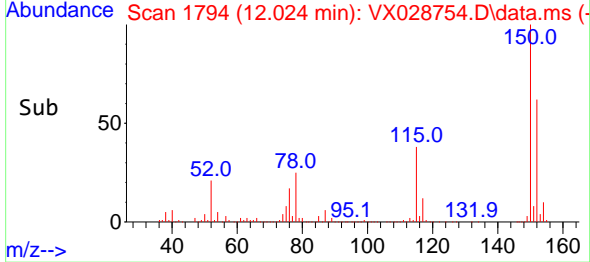


#72  
 1,4-Dichlorobenzene-d4  
 Concen: 50.000 ug/l  
 RT: 12.024 min Scan# 11  
 Delta R.T. 0.000 min  
 Lab File: VX028754.D  
 Acq: 17 May 2022 13:48

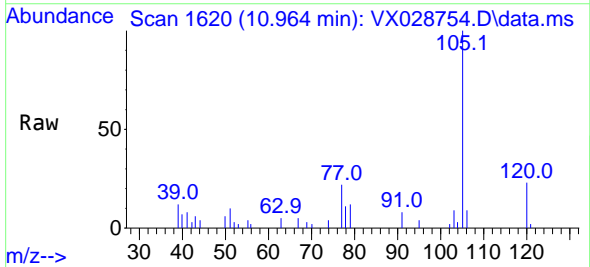
Instrument :  
 MSVOA\_X  
 ClientSampleId :  
 DUP051322DL



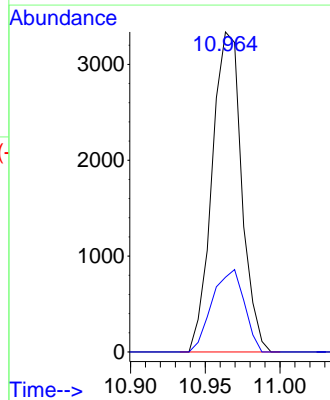
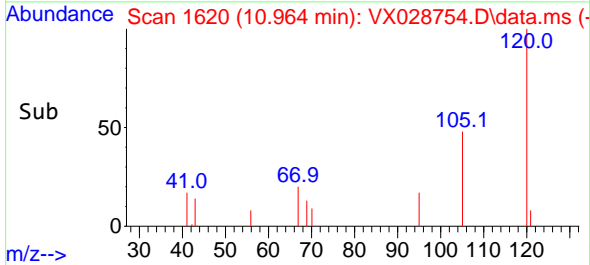
Tgt Ion:152 Resp: 211743  
 Ion Ratio Lower Upper  
 152 100  
 115 61.2 37.5 112.7  
 150 158.5 0.0 338.2

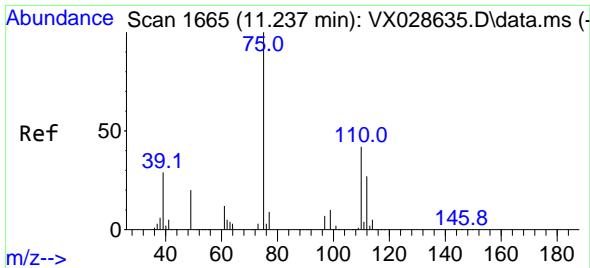


#73  
 Isopropylbenzene  
 Concen: 0.286 ug/l  
 RT: 10.964 min Scan# 1620  
 Delta R.T. 0.001 min  
 Lab File: VX028754.D  
 Acq: 17 May 2022 13:48



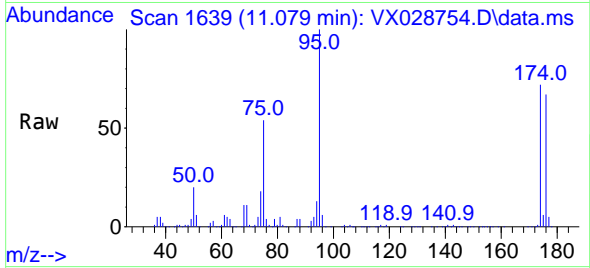
Tgt Ion:105 Resp: 4590  
 Ion Ratio Lower Upper  
 105 100  
 120 27.9 13.5 40.5



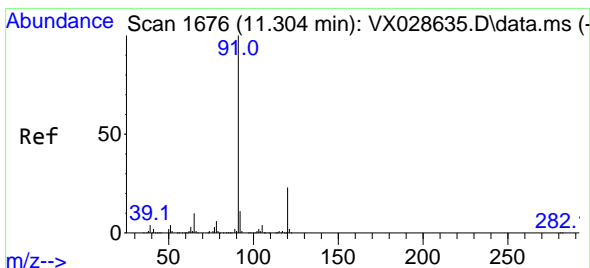
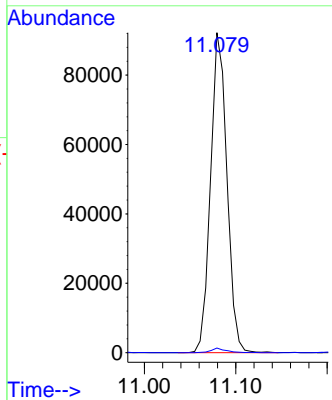
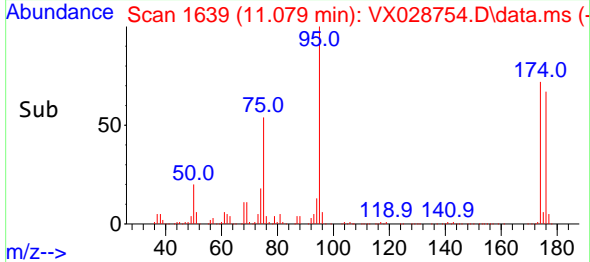


#76  
 1,2,3-Trichloropropane  
 Concen: 23.098 ug/l  
 RT: 11.079 min Scan# 1639  
 Delta R.T. -0.158 min  
 Lab File: VX028754.D  
 Acq: 17 May 2022 13:48

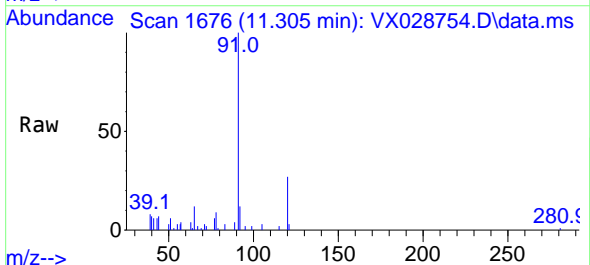
Instrument : MSVOA\_X  
 ClientSampleId : DUP051322DL



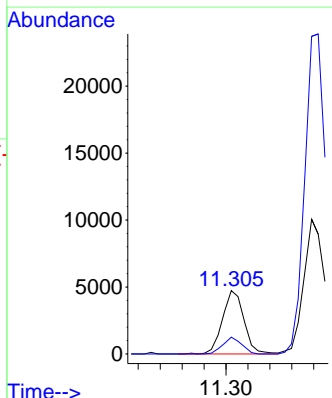
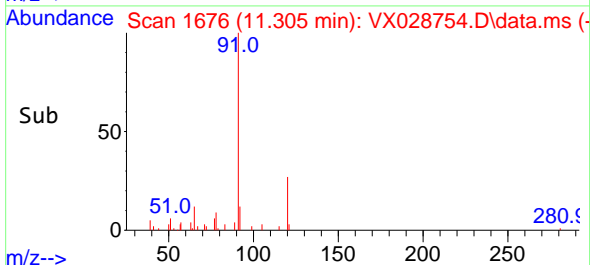
Tgt Ion: 75 Resp: 114540  
 Ion Ratio Lower Upper  
 75 100  
 77 1.3 19.4 58.2#

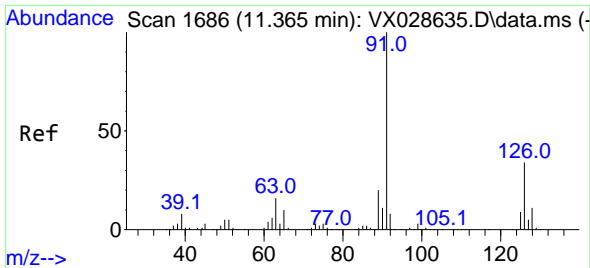


#78  
 n-propylbenzene  
 Concen: 0.346 ug/l  
 RT: 11.305 min Scan# 1676  
 Delta R.T. 0.001 min  
 Lab File: VX028754.D  
 Acq: 17 May 2022 13:48



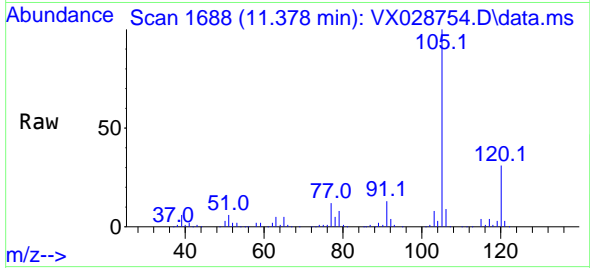
Tgt Ion: 91 Resp: 6433  
 Ion Ratio Lower Upper  
 91 100  
 120 23.1 11.6 34.8



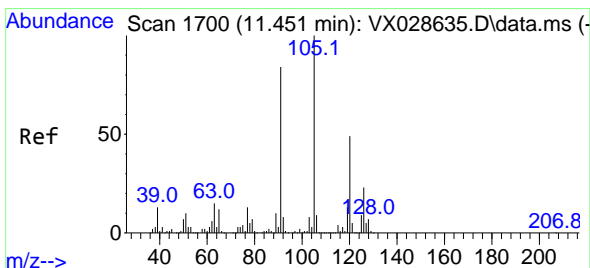
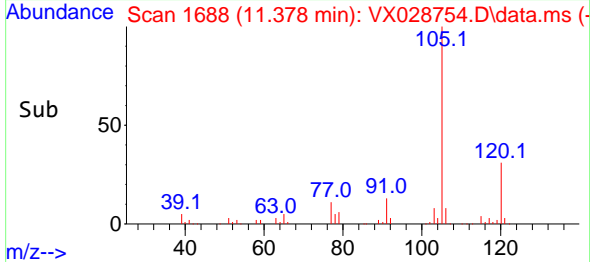
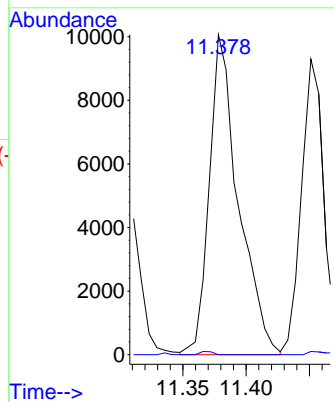


#79  
 2-Chlorotoluene  
 Concen: 1.417 ug/l  
 RT: 11.378 min Scan# 11  
 Delta R.T. 0.013 min  
 Lab File: VX028754.D  
 Acq: 17 May 2022 13:48

Instrument :  
 MSVOA\_X  
 ClientSampleId :  
 DUP051322DL

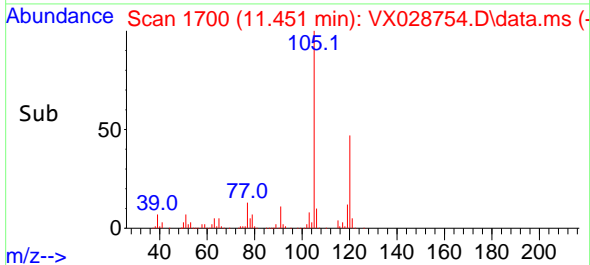
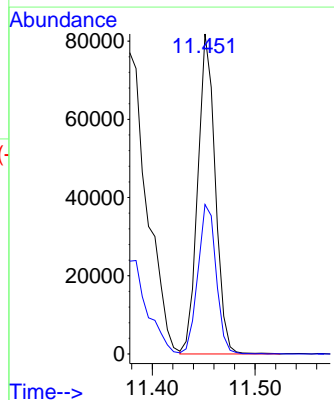
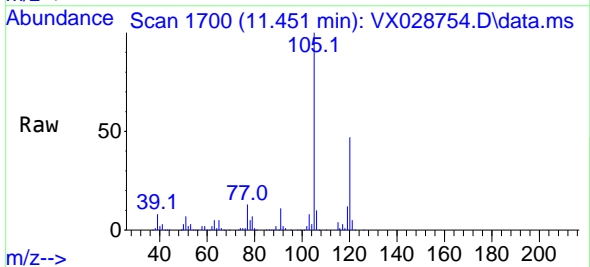


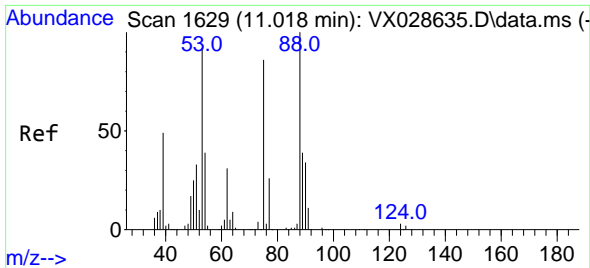
Tgt Ion: 91 Resp: 16132  
 Ion Ratio Lower Upper  
 91 100  
 126 0.4 17.3 51.9#



#80  
 1,3,5-Trimethylbenzene  
 Concen: 7.241 ug/l  
 RT: 11.451 min Scan# 1700  
 Delta R.T. 0.000 min  
 Lab File: VX028754.D  
 Acq: 17 May 2022 13:48

Tgt Ion: 105 Resp: 96883  
 Ion Ratio Lower Upper  
 105 100  
 120 48.8 24.3 72.9

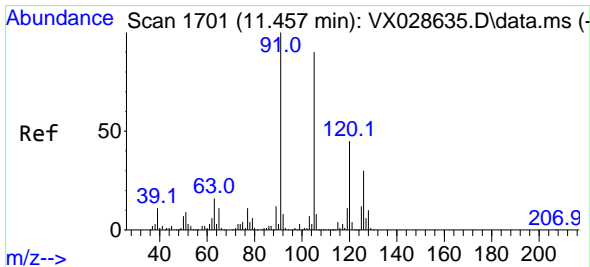
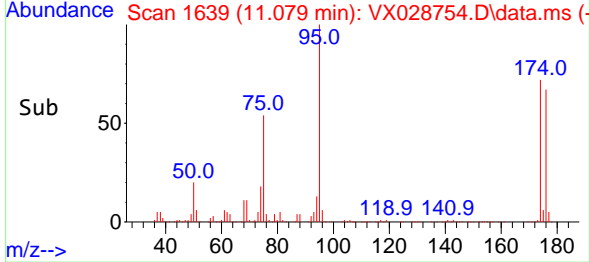
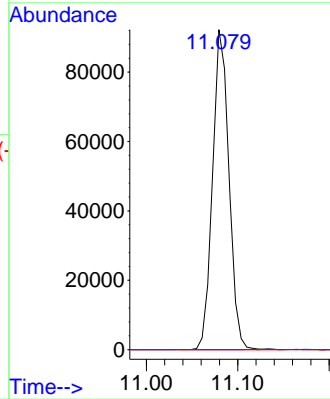
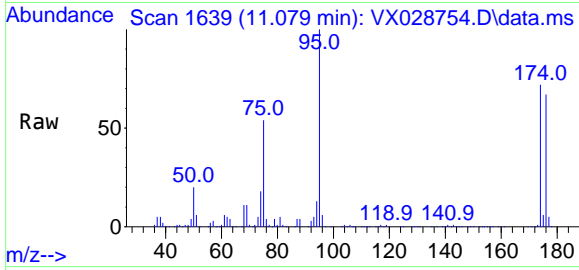




#81  
 trans-1,4-Dichloro-2-butene  
 Concen: 67.444 ug/l  
 RT: 11.079 min Scan# 1700  
 Delta R.T. 0.061 min  
 Lab File: VX028754.D  
 Acq: 17 May 2022 13:48

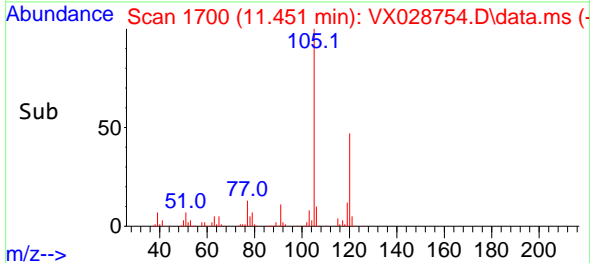
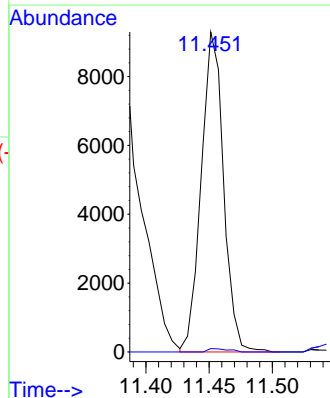
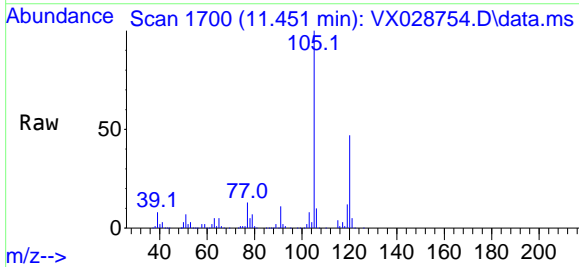
Instrument : MSVOA\_X  
 ClientSampleId : DUP051322DL

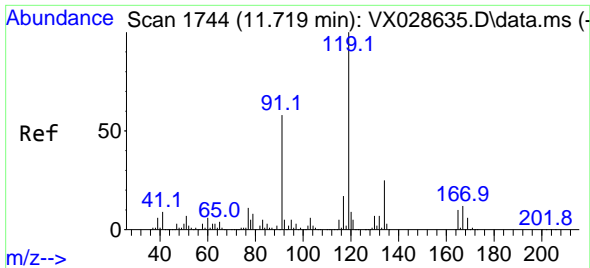
Tgt Ion: 75 Resp: 114540  
 Ion Ratio Lower Upper  
 75 100  
 53 0.0 69.0 103.4#  
 89 0.0 37.0 55.6#



#82  
 4-Chlorotoluene  
 Concen: 0.868 ug/l  
 RT: 11.451 min Scan# 1700  
 Delta R.T. -0.006 min  
 Lab File: VX028754.D  
 Acq: 17 May 2022 13:48

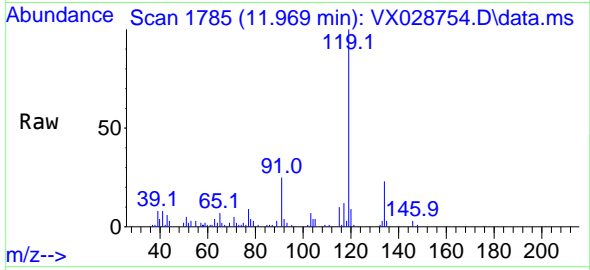
Tgt Ion: 91 Resp: 11430  
 Ion Ratio Lower Upper  
 91 100  
 126 1.0 14.9 44.5#





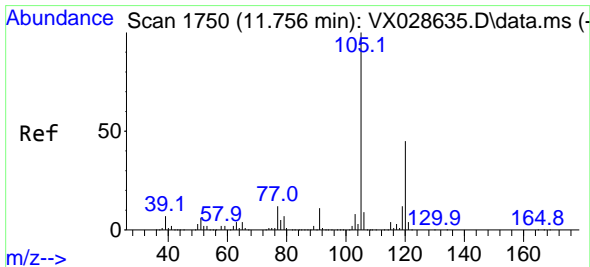
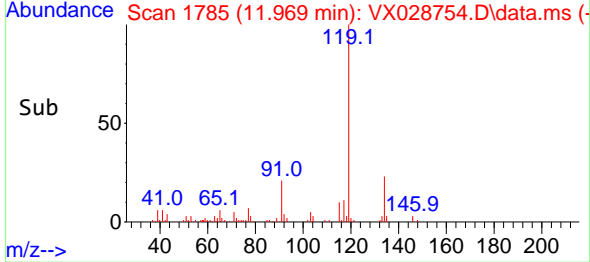
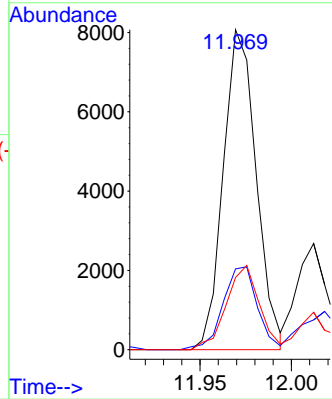
#83  
 tert-Butylbenzene  
 Concen: 0.782 ug/l  
 RT: 11.969 min Scan# 1785  
 Delta R.T. 0.250 min  
 Lab File: VX028754.D  
 Acq: 17 May 2022 13:48

Instrument : MSVOA\_X  
 ClientSampleId : DUP051322DL

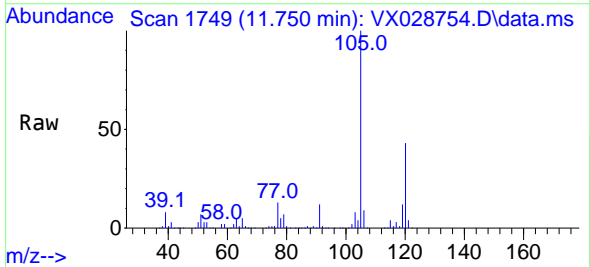


Tgt Ion:119 Resp: 10133

Ion	Ratio	Lower	Upper
119	100		
91	27.0	26.9	80.6
134	26.4	11.4	34.2

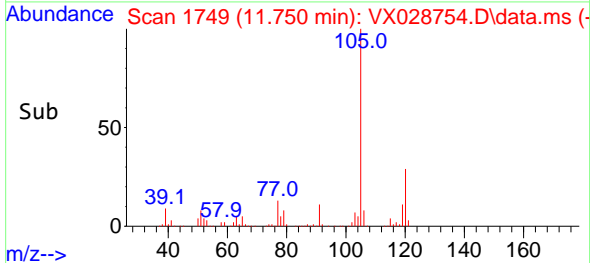
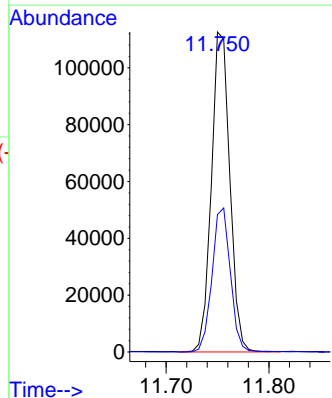


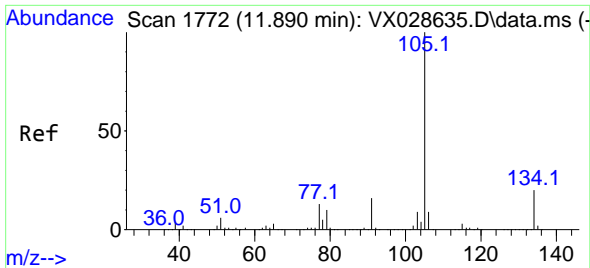
#84  
 1,2,4-Trimethylbenzene  
 Concen: 10.469 ug/l  
 RT: 11.750 min Scan# 1749  
 Delta R.T. -0.006 min  
 Lab File: VX028754.D  
 Acq: 17 May 2022 13:48



Tgt Ion:105 Resp: 140461

Ion	Ratio	Lower	Upper
105	100		
120	44.6	22.6	67.8

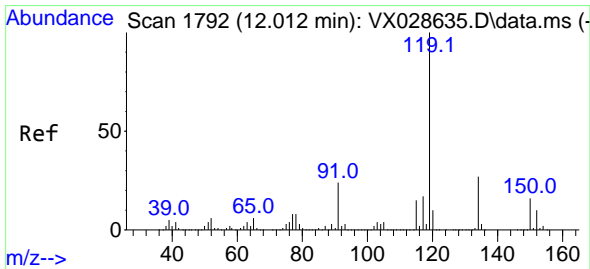
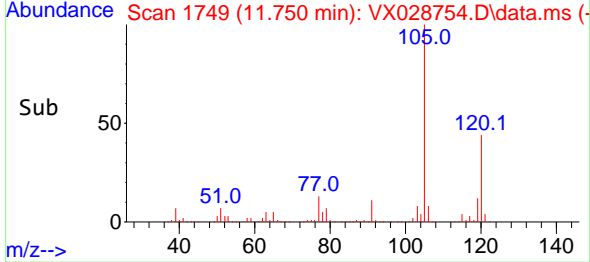
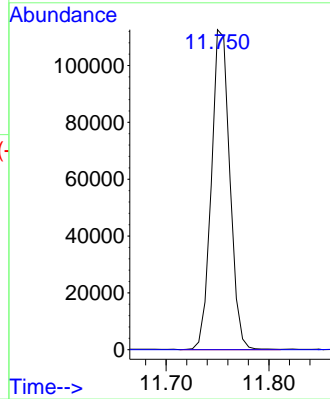
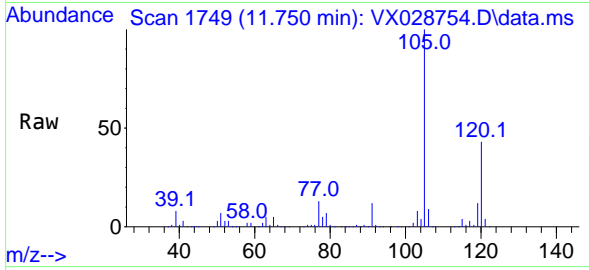




#85  
 sec-Butylbenzene  
 Concen: 8.790 ug/l  
 RT: 11.750 min Scan# 1749  
 Delta R.T. -0.140 min  
 Lab File: VX028754.D  
 Acq: 17 May 2022 13:48

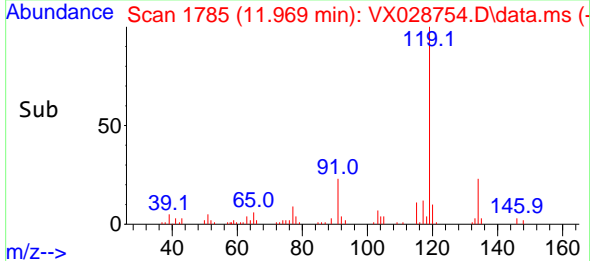
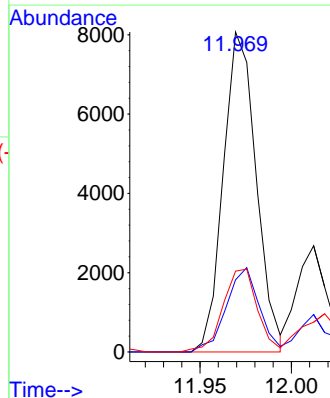
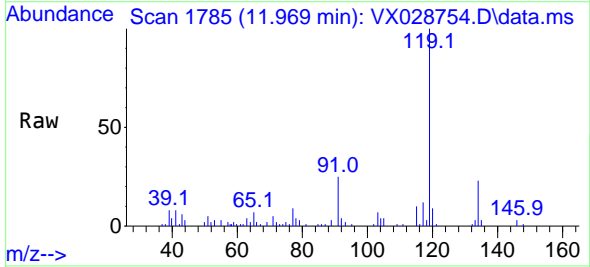
Instrument : MSVOA\_X  
 ClientSampleId : DUP051322DL

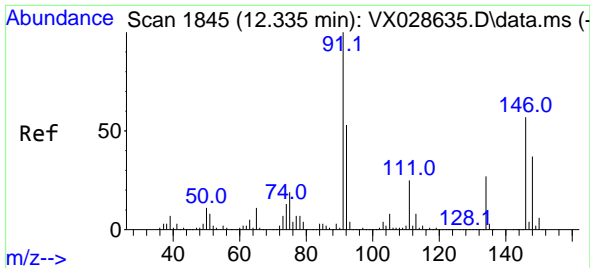
Tgt Ion:105 Resp: 140461  
 Ion Ratio Lower Upper  
 105 100  
 134 0.0 10.2 30.4#



#86  
 p-Isopropyltoluene  
 Concen: 0.756 ug/l  
 RT: 11.969 min Scan# 1785  
 Delta R.T. -0.043 min  
 Lab File: VX028754.D  
 Acq: 17 May 2022 13:48

Tgt Ion:119 Resp: 10133  
 Ion Ratio Lower Upper  
 119 100  
 134 26.4 13.0 39.0  
 91 27.0 11.3 33.9



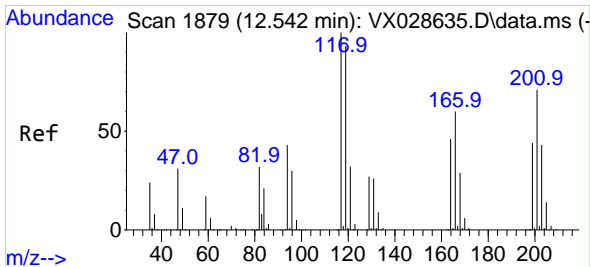
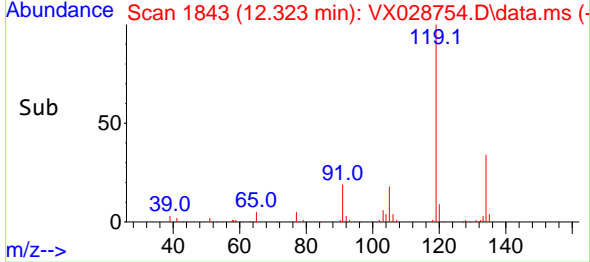
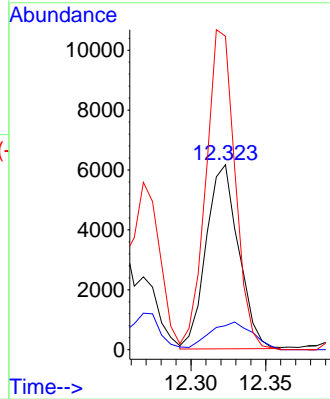
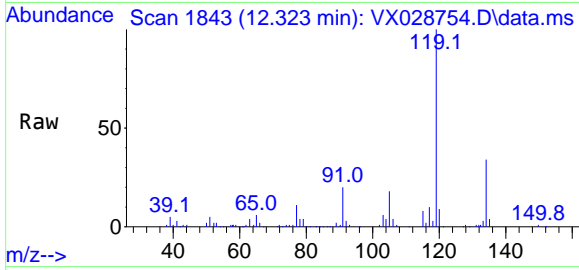


#89  
 n-Butylbenzene  
 Concen: 0.800 ug/l  
 RT: 12.323 min Scan# 11  
 Delta R.T. -0.012 min  
 Lab File: VX028754.D  
 Acq: 17 May 2022 13:48

Instrument :  
 MSVOA\_X  
 ClientSampleId :  
 DUP051322DL

Tgt Ion: 91 Resp: 9298

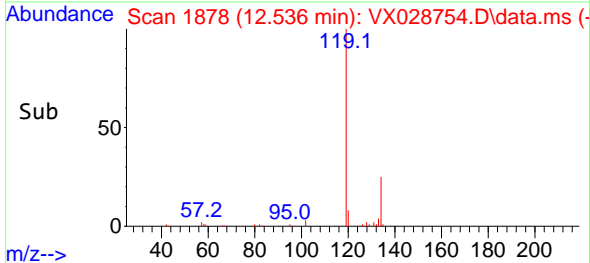
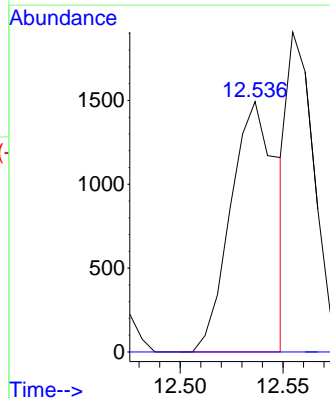
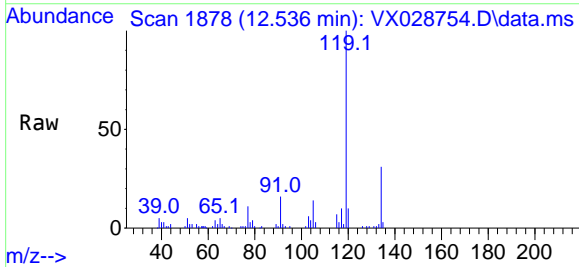
Ion	Ratio	Lower	Upper
91	100		
92	19.4	27.8	83.3#
134	156.0	13.3	39.8#

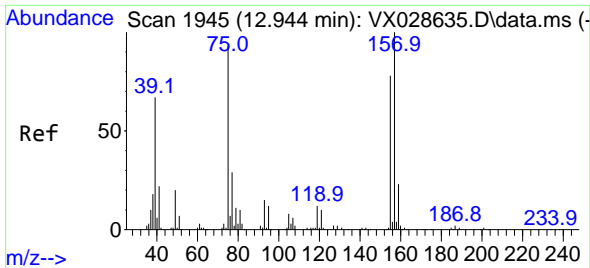


#90  
 Hexachloroethane  
 Concen: 1.083 ug/l  
 RT: 12.536 min Scan# 1878  
 Delta R.T. -0.006 min  
 Lab File: VX028754.D  
 Acq: 17 May 2022 13:48

Tgt Ion: 117 Resp: 2349

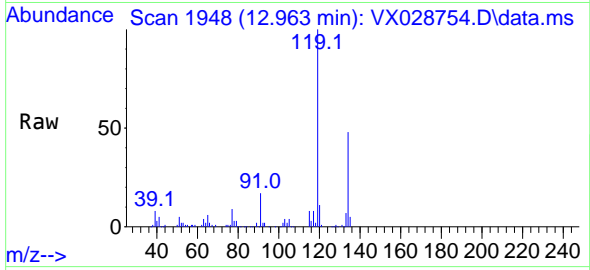
Ion	Ratio	Lower	Upper
117	100		
201	0.0	39.5	118.5#



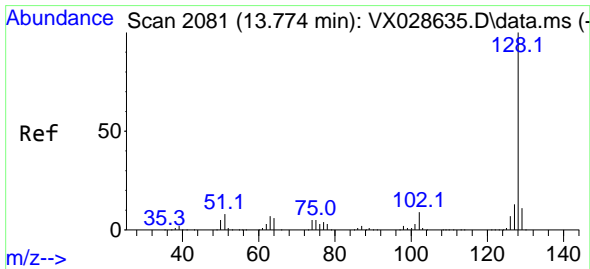
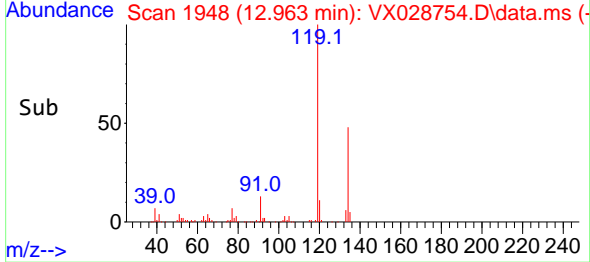
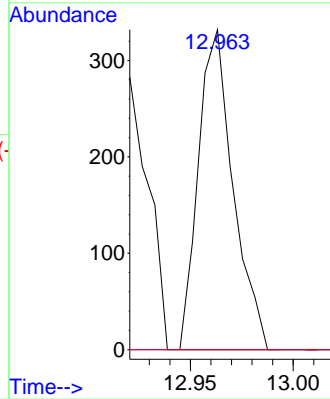


#92  
 1,2-Dibromo-3-Chloropropane  
 Concen: 0.332 ug/l  
 RT: 12.963 min Scan# 1948  
 Delta R.T. 0.019 min  
 Lab File: VX028754.D  
 Acq: 17 May 2022 13:48

Instrument : MSVOA\_X  
 ClientSampleId : DUP051322DL



Tgt Ion: 75 Resp: 391  
 Ion Ratio Lower Upper  
 75 100  
 155 0.0 47.0 141.2#  
 157 0.0 57.9 173.6#



#95  
 Naphthalene  
 Concen: 5.316 ug/l  
 RT: 13.780 min Scan# 2082  
 Delta R.T. 0.006 min  
 Lab File: VX028754.D  
 Acq: 17 May 2022 13:48

Tgt Ion:128 Resp: 79985  
 Ion Ratio Lower Upper  
 128 100  
 127 13.2 10.2 15.4  
 129 11.3 8.7 13.1

