

Data Path : Z:\VOASRV\HPCHEM1\MSVOA X\DATA\VX051820\
 Data File : VX016316.D
 Acq On : 18 May 2020 22:13
 Operator : JC/SP
 Sample : L2672-13 20X
 Misc : 5.0mL/MSVOA X/WATER
 ALS Vial : 23 Sample Multiplier: 1

Instrument :
 MSVOA_X
 ClientSampleId :

Quant Time: May 19 00:55:49 2020
 Quant Method : Z:\VOASRV\HPCHEM1\MSVOA_X\METHOD\82X050420W.M
 Quant Title : SW846 8260
 QLast Update : Wed May 06 06:43:32 2020
 Response via : Initial Calibration

Internal Standards	R.T.	QIon	Response	Conc	Units	Dev(Min)
1) Pentafluorobenzene	5.63	168	259132	50.00	ug/l	0.00
34) 1,4-Difluorobenzene	6.84	114	420971	50.00	ug/l	0.00
63) Chlorobenzene-d5	10.10	117	411467	50.00	ug/l	0.00
72) 1,4-Dichlorobenzene-d4	12.07	152	213612	50.00	ug/l	0.00

System Monitoring Compounds

33) 1,2-Dichloroethane-d4	6.04	65	149051	43.71	ug/l	0.00
Spiked Amount	50.000		Recovery	=	87.42%	
35) Dibromofluoromethane	5.47	113	120408	45.15	ug/l	0.00
Spiked Amount	50.000		Recovery	=	90.30%	
50) Toluene-d8	8.70	98	515016	50.12	ug/l	0.00
Spiked Amount	50.000		Recovery	=	100.24%	
62) 4-Bromofluorobenzene	11.12	95	208735	53.40	ug/l	0.00
Spiked Amount	50.000		Recovery	=	106.80%	

Target Compounds

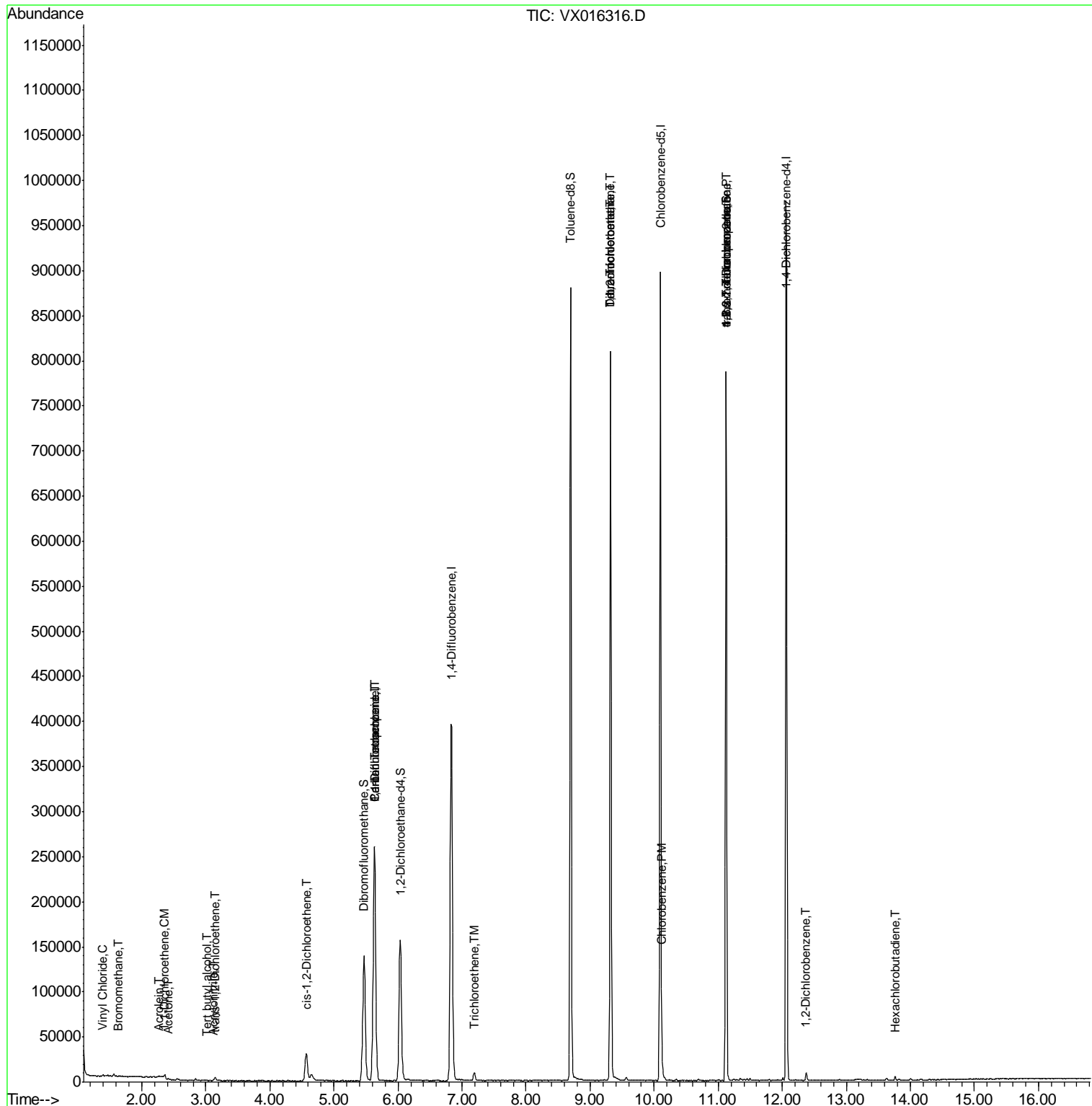
						Qvalue
4) Vinyl Chloride	1.39	62	920	0.271	ug/l #	79
5) Bromomethane	1.64	94	434	0.253	ug/l #	32
11) Tert butyl alcohol	3.02	59	184	0.213	ug/l #	72
12) 1,1-Dichloroethene	2.36	96	1143	0.424	ug/l	81
13) Acrolein	2.27	56	602	1.116	ug/l	88
15) Acrylonitrile	3.12	53	413	0.231	ug/l	98
16) Acetone	2.42	43	1047	0.688	ug/l	96
21) trans-1,2-Dichloroethene	3.14	96	1711	0.570	ug/l #	76
27) cis-1,2-Dichloroethene	4.57	96	20727	6.316	ug/l	82
36) 1,1-Dichloropropene	5.63	75	18458	4.454	ug/l #	49
38) Carbon Tetrachloride	5.63	117	24571	5.834	ug/l #	15
44) Trichloroethene	7.19	130	3367	0.782	ug/l	85
55) 1,1,2-Trichloroethane	9.32	97	1267	0.426	ug/l #	1
60) Dibromochloromethane	9.32	129	148490	45.343	ug/l #	11
64) Tetrachloroethene	9.32	164	159729	31.621	ug/l	98
65) Chlorobenzene	10.12	112	6558	0.761	ug/l	100
75) 1,1,2,2-Tetrachloroethane	11.13	83	122	2.091	ug/l #	1
76) 1,2,3-Trichloropropane	11.12	75	100425	20.717	ug/l #	35
81) trans-1,4-Dichloro-2-buten	11.12	75	100425	49.371	ug/l #	13
91) 1,2-Dichlorobenzene	12.38	146	2397	0.346	ug/l	93
94) Hexachlorobutadiene	13.76	225	675	0.826	ug/l	94

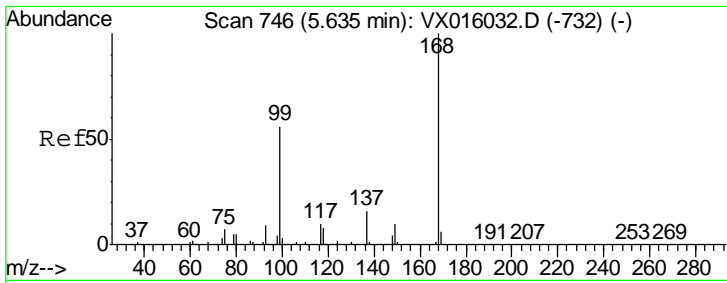
(#) = qualifier out of range (m) = manual integration (+) = signals summed

Data Path : Z:\VOASRV\HPCHEM1\MSVOA X\DATA\VX051820\
 Data File : VX016316.D
 Acq On : 18 May 2020 22:13
 Operator : JC/SP
 Sample : L2672-13 20X
 Misc : 5.0mL/MSVOA X/WATER
 ALS Vial : 23 Sample Multiplier: 1

Instrument :
 MSVOA_X
 ClientSampled :

Quant Time: May 19 00:55:49 2020
 Quant Method : Z:\VOASRV\HPCHEM1\MSVOA_X\METHOD\82X050420W.M
 Quant Title : SW846 8260
 QLast Update : Wed May 06 06:43:32 2020
 Response via : Initial Calibration

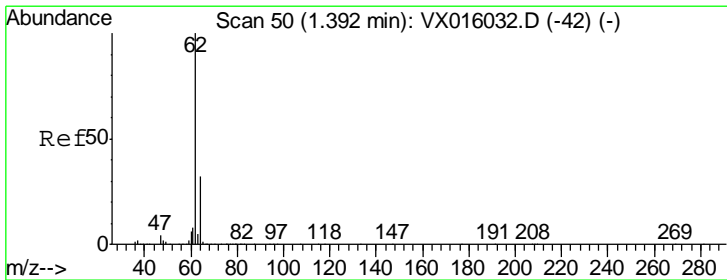
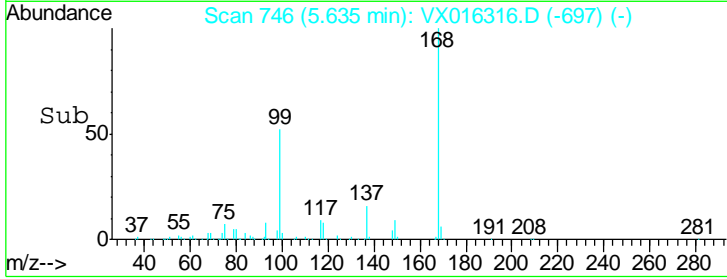
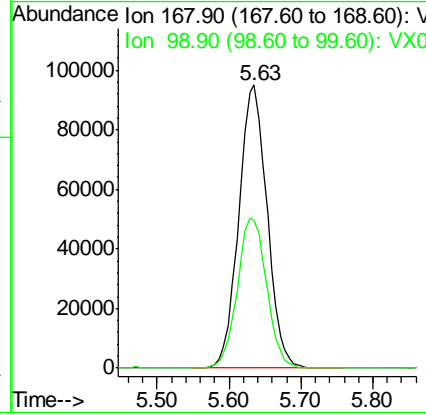
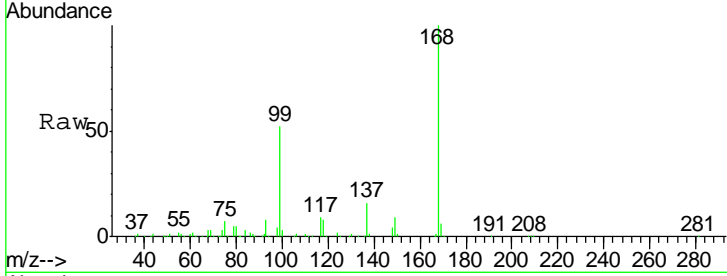




#1
 Pentafluorobenzene
 Concen: 50.000 ug/l
 RT: 5.63 min Scan# 746
 Delta R.T. -0.00 min
 Lab File: VX016316.D
 Acq: 18 May 2020 22:13

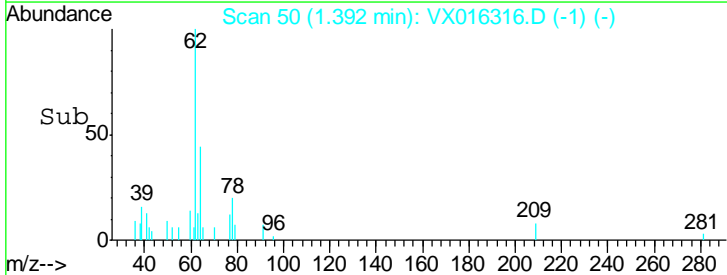
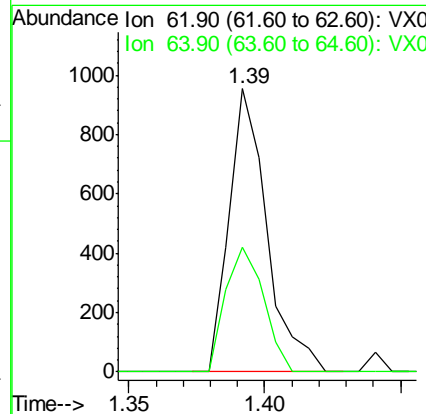
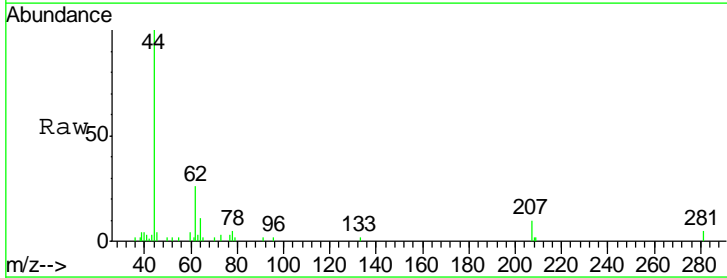
Instrument :
 MSVOA_X
 ClientSampled :

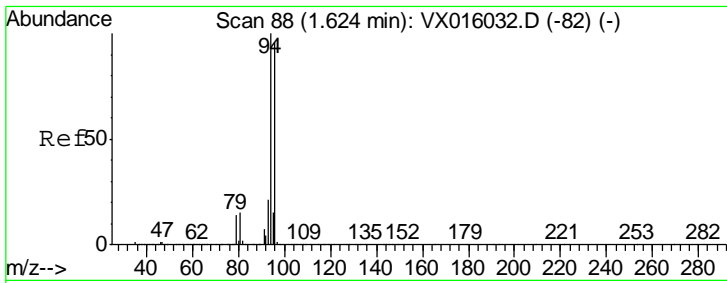
Tgt Ion	Resp	Lower	Upper
168	100		
99	52.1	45.0	67.4



#4
 Vinyl Chloride
 Concen: 0.271 ug/l
 RT: 1.39 min Scan# 50
 Delta R.T. -0.00 min
 Lab File: VX016316.D
 Acq: 18 May 2020 22:13

Tgt Ion	Resp	Lower	Upper
62	100		
64	44.0	25.7	38.5#

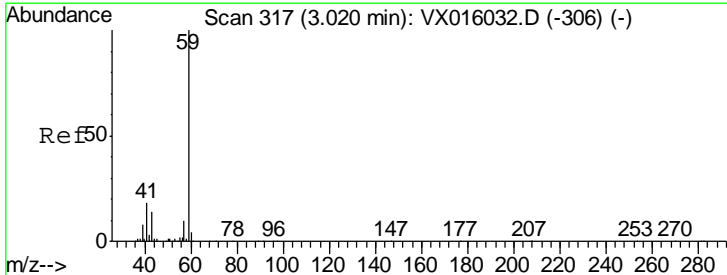
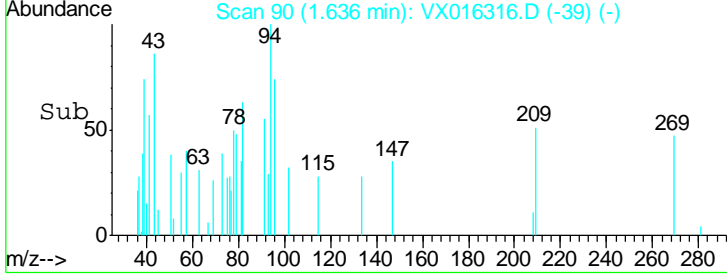
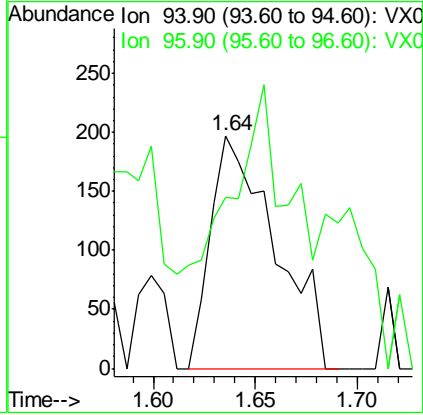
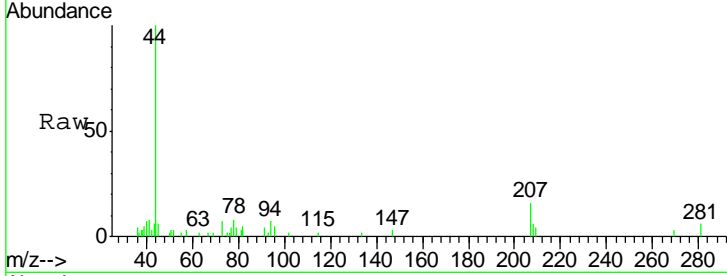




#5
 Bromomethane
 Concen: 0.253 ug/l
 RT: 1.64 min Scan# 90
 Delta R.T. 0.01 min
 Lab File: VX016316.D
 Acq: 18 May 2020 22:13

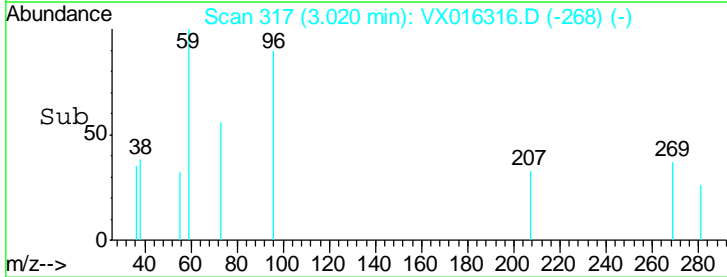
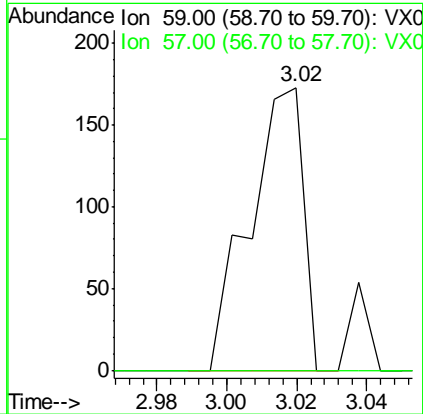
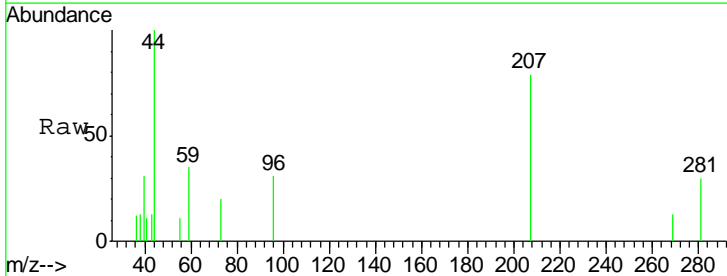
Instrument :
 MSVOA_X
 ClientSampled :

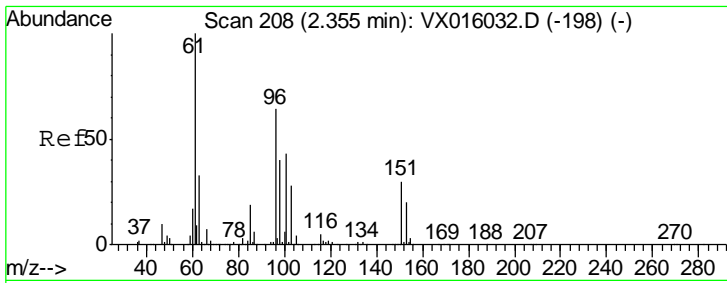
Tgt Ion: 94 Resp: 434
 Ion Ratio Lower Upper
 94 100
 96 29.4 76.9 115.3#



#11
 Tert butyl alcohol
 Concen: 0.213 ug/l
 RT: 3.02 min Scan# 317
 Delta R.T. -0.00 min
 Lab File: VX016316.D
 Acq: 18 May 2020 22:13

Tgt Ion: 59 Resp: 184
 Ion Ratio Lower Upper
 59 100
 57 0.0 8.2 12.4#

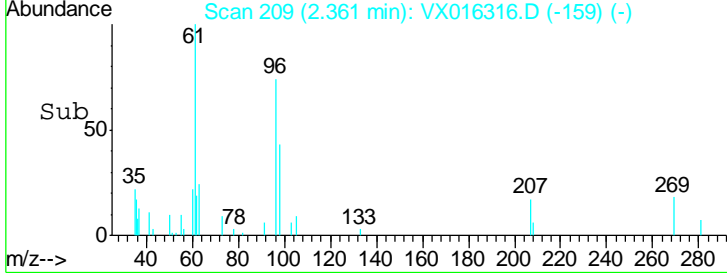
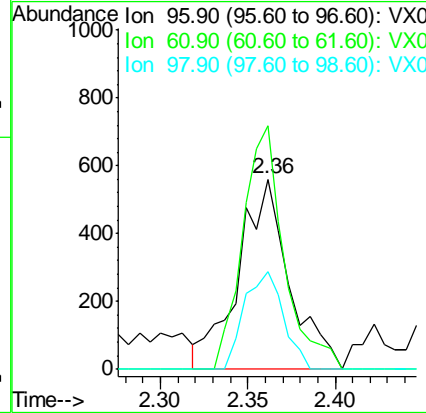
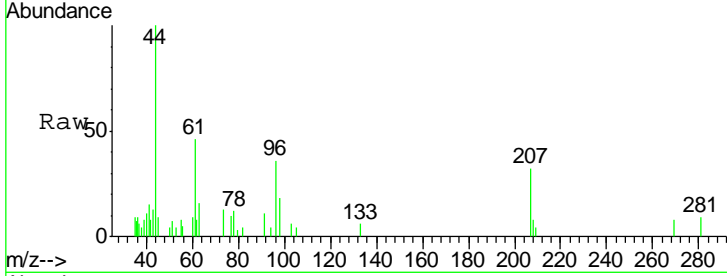




#12
 1,1-Dichloroethene
 Concen: 0.424 ug/l
 RT: 2.36 min Scan# 209
 Delta R.T. 0.01 min
 Lab File: VX016316.D
 Acq: 18 May 2020 22:13

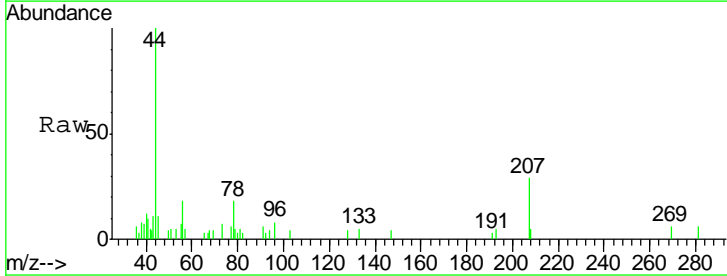
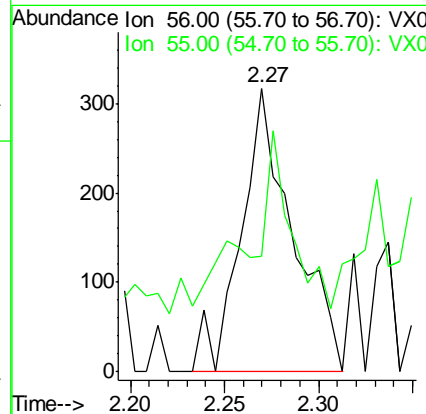
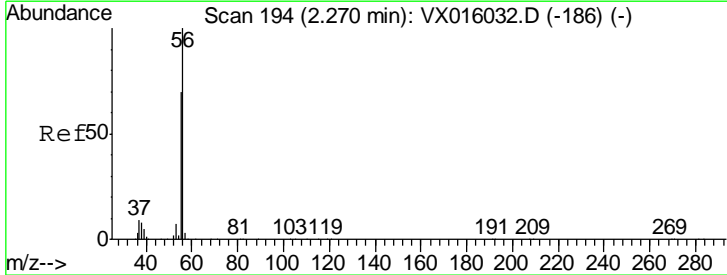
Instrument : MSVOA_X
 ClientSampled :

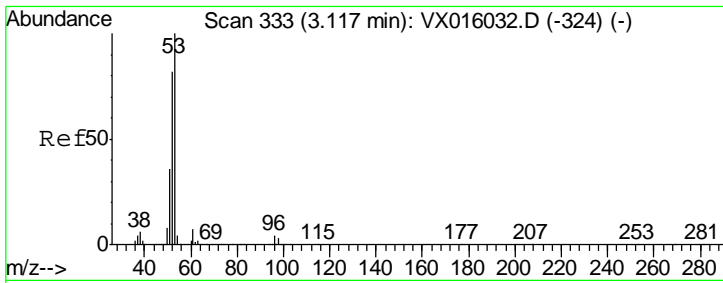
Tgt Ion	Resp	Lower	Upper
96	1143		
96	100		
61	128.2	124.8	187.2
98	51.3	49.7	74.5



#13
 Acrolein
 Concen: 1.116 ug/l
 RT: 2.27 min Scan# 194
 Delta R.T. -0.00 min
 Lab File: VX016316.D
 Acq: 18 May 2020 22:13

Tgt Ion	Resp	Lower	Upper
56	602		
56	100		
55	60.8	56.5	84.7

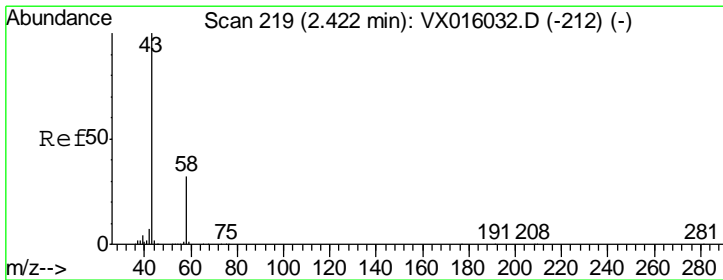
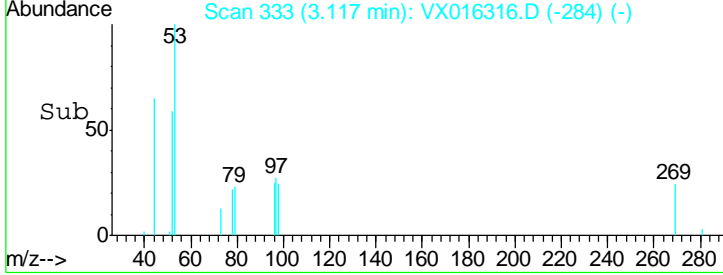
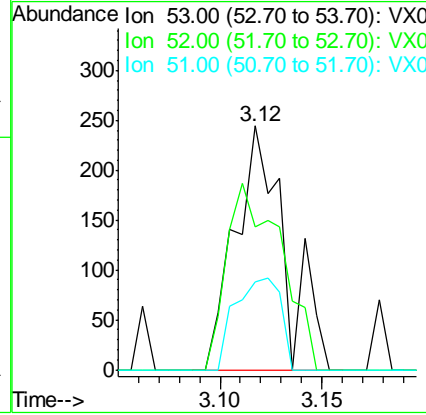
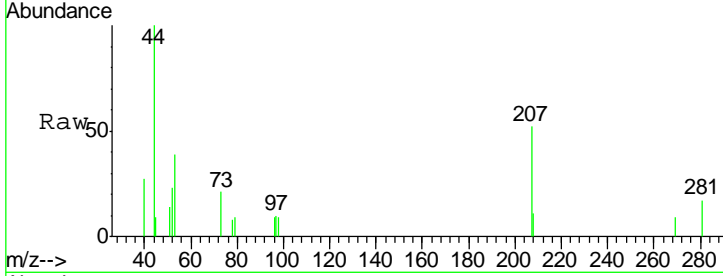




#15
 Acrylonitrile
 Concen: 0.231 ug/l
 RT: 3.12 min Scan# 333
 Delta R.T. -0.00 min
 Lab File: VX016316.D
 Acq: 18 May 2020 22:13

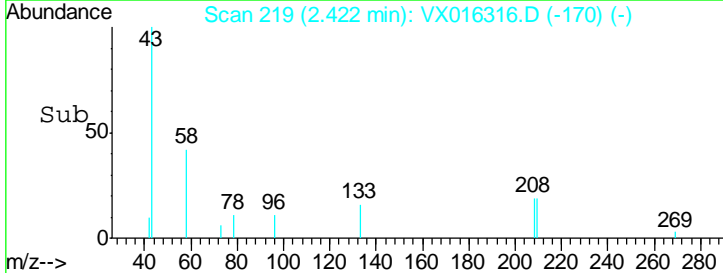
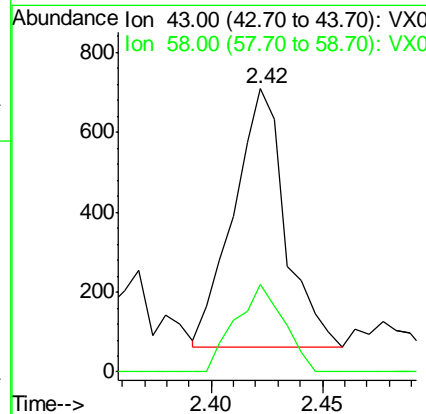
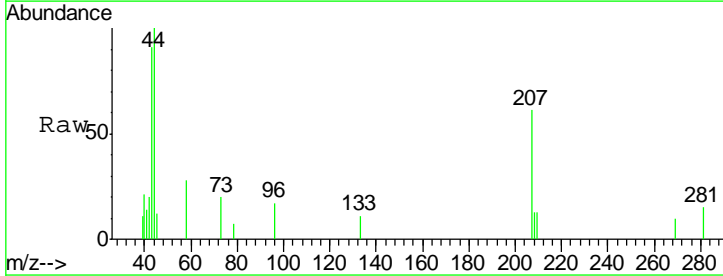
Instrument :
 MSVOA_X
 ClientSampled :

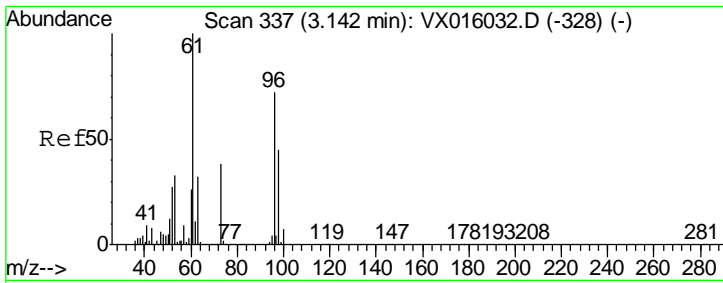
Tgt Ion	Resp	Lower	Upper
53	100		
52	83.8	66.1	99.1
51	34.6	28.8	43.2



#16
 Acetone
 Concen: 0.688 ug/l
 RT: 2.42 min Scan# 219
 Delta R.T. -0.00 min
 Lab File: VX016316.D
 Acq: 18 May 2020 22:13

Tgt Ion	Resp	Lower	Upper
43	100		
58	33.7	25.4	38.0

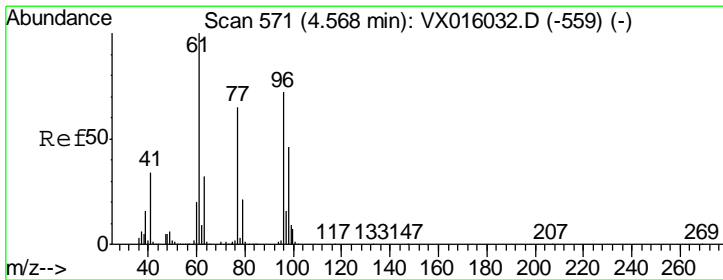
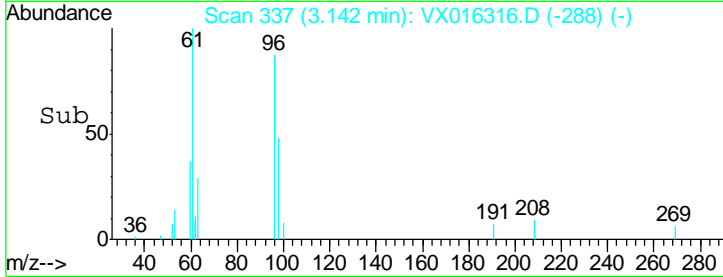
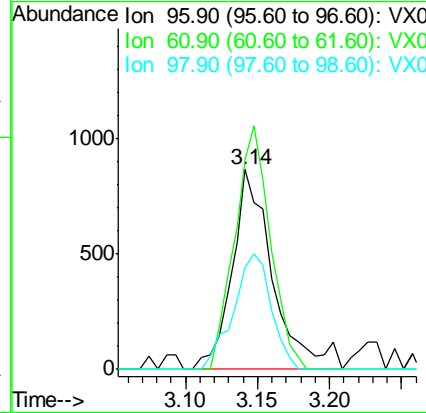
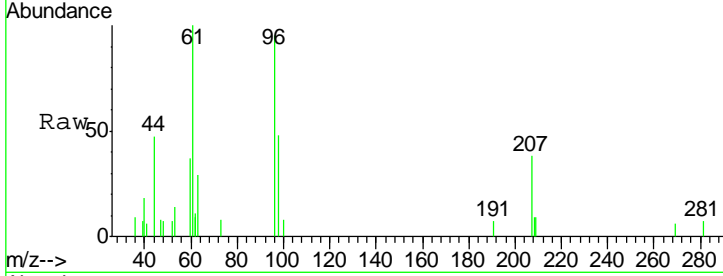




#21
 trans-1,2-Dichloroethene
 Concen: 0.570 ug/l
 RT: 3.14 min Scan# 337
 Delta R.T. -0.00 min
 Lab File: VX016316.D
 Acq: 18 May 2020 22:13

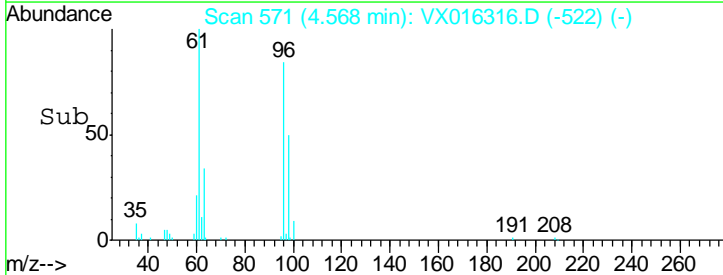
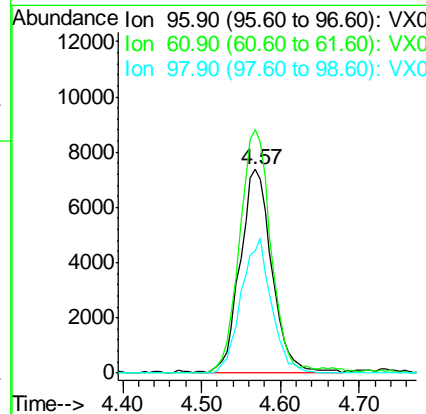
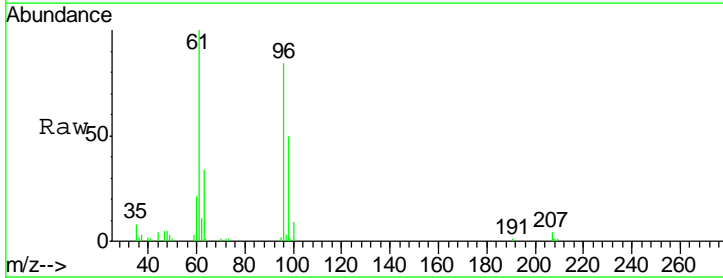
Instrument :
 MSVOA_X
 ClientSampled :

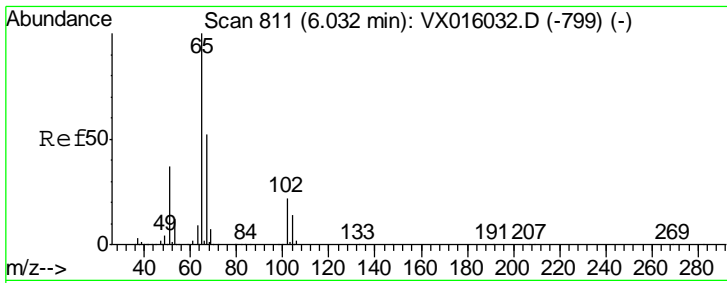
Tgt Ion	Resp	Lower	Upper
96	1711		
61	104.8	111.2	166.8#
98	50.7	50.2	75.4



#27
 cis-1,2-Dichloroethene
 Concen: 6.316 ug/l
 RT: 4.57 min Scan# 571
 Delta R.T. -0.00 min
 Lab File: VX016316.D
 Acq: 18 May 2020 22:13

Tgt Ion	Resp	Lower	Upper
96	20727		
61	117.5	0.0	296.2
98	62.6	0.0	129.4

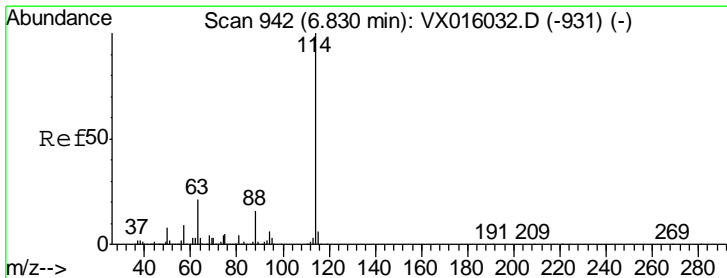
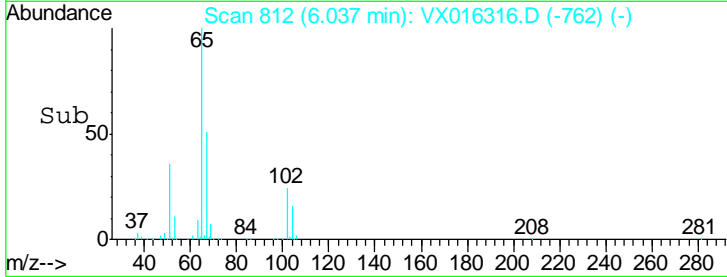
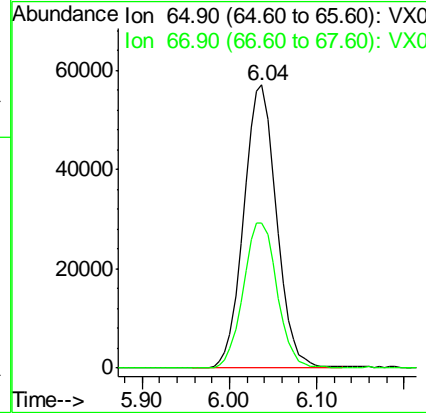
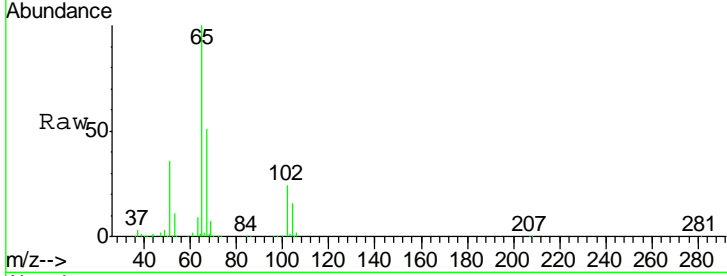




#33
 1,2-Dichloroethane-d4
 Concen: 43.711 ug/l
 RT: 6.04 min Scan# 812
 Delta R.T. 0.01 min
 Lab File: VX016316.D
 Acq: 18 May 2020 22:13

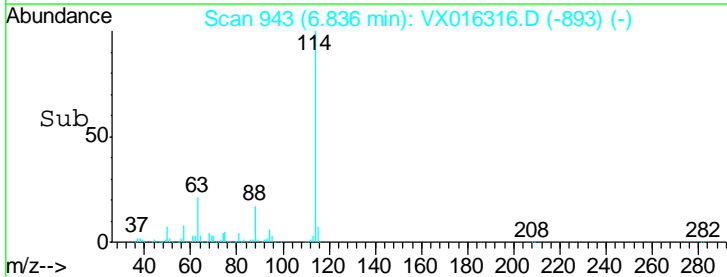
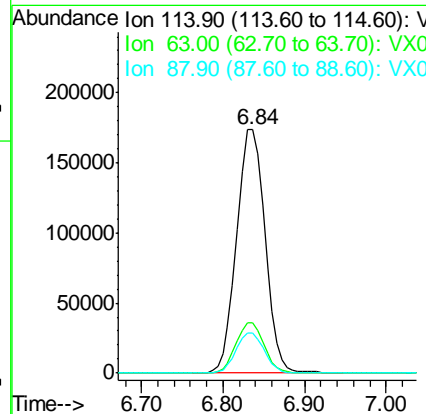
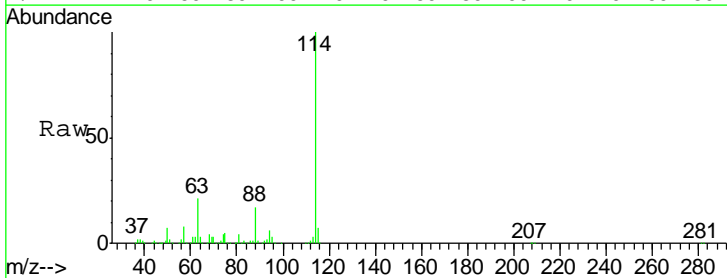
Instrument :
 MSVOA_X
 ClientSampled :

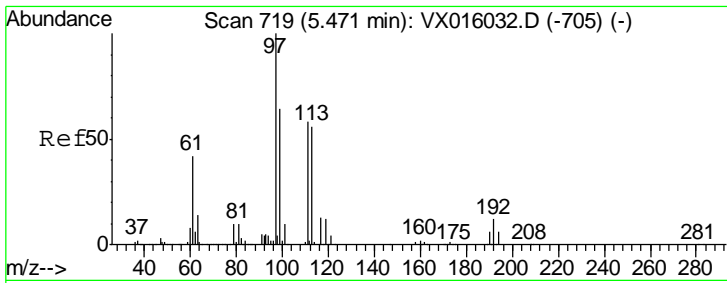
Tgt Ion	Resp	Lower	Upper
65	149051		
67	52.9	0.0	104.8



#34
 1,4-Difluorobenzene
 Concen: 50.000 ug/l
 RT: 6.84 min Scan# 943
 Delta R.T. 0.01 min
 Lab File: VX016316.D
 Acq: 18 May 2020 22:13

Tgt Ion	Resp	Lower	Upper
114	420971		
63	20.5	0.0	42.8
88	16.5	0.0	31.4

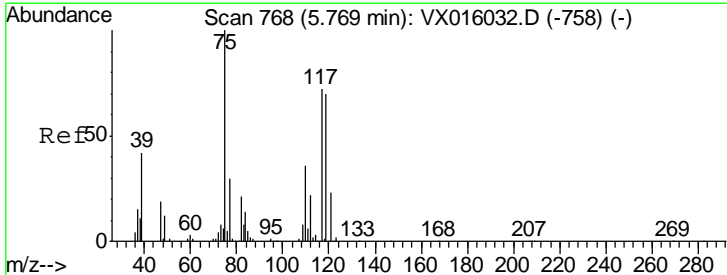
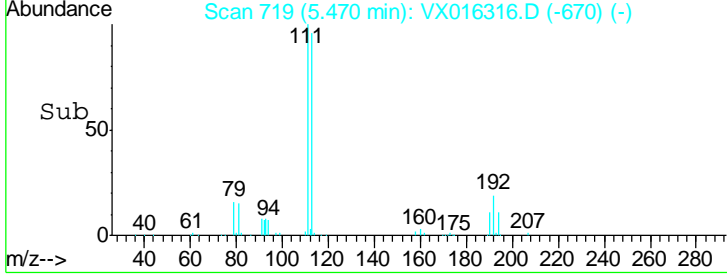
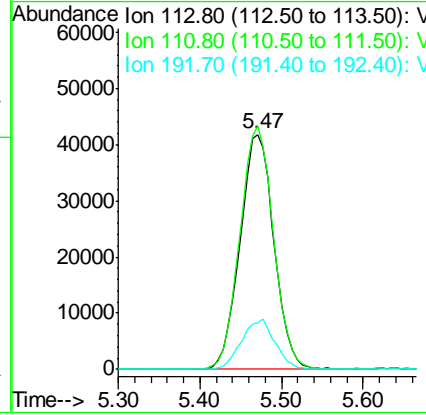
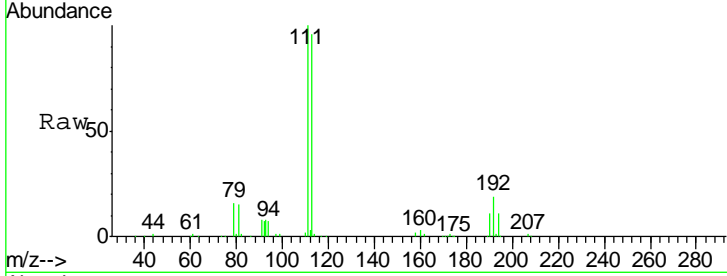




#35
 Dibromofluoromethane
 Concen: 45.147 ug/l
 RT: 5.47 min Scan# 719
 Delta R.T. -0.00 min
 Lab File: VX016316.D
 Acq: 18 May 2020 22:13

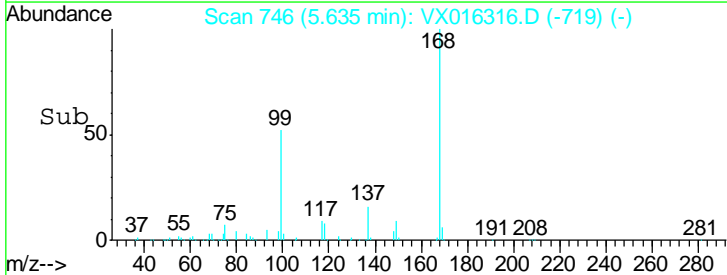
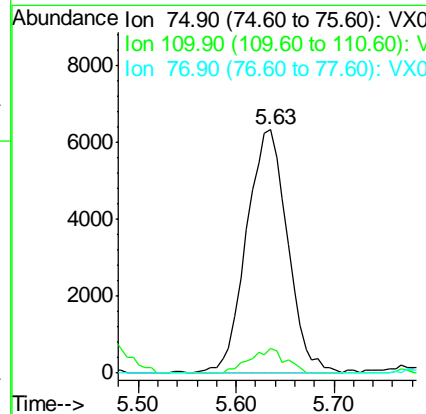
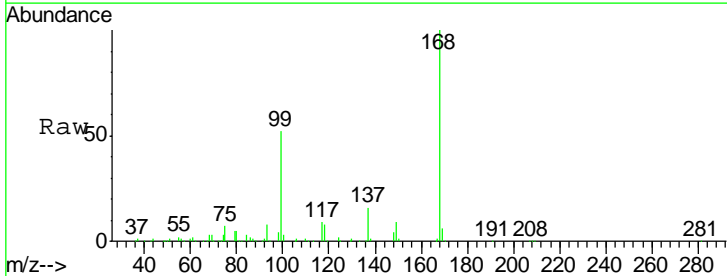
Instrument :
 MSVOA_X
 ClientSampled :

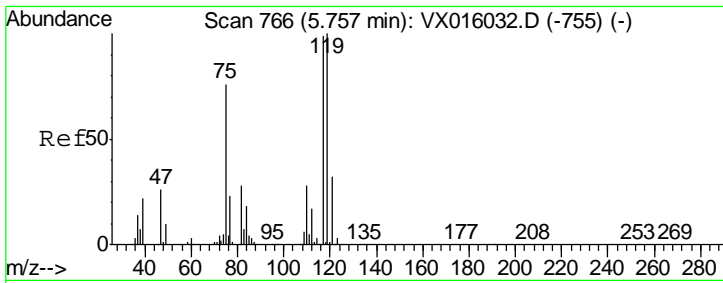
Tgt Ion	Resp	Lower	Upper
113	120408		
113	100		
111	102.5	81.6	122.4
192	20.9	17.0	25.4



#36
 1,1-Dichloropropene
 Concen: 4.454 ug/l
 RT: 5.63 min Scan# 746
 Delta R.T. -0.13 min
 Lab File: VX016316.D
 Acq: 18 May 2020 22:13

Tgt Ion	Resp	Lower	Upper
75	18458		
75	100		
110	8.8	18.1	54.1#
77	0.0	25.0	37.6#

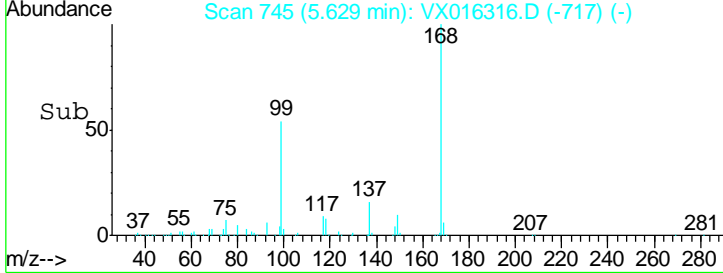
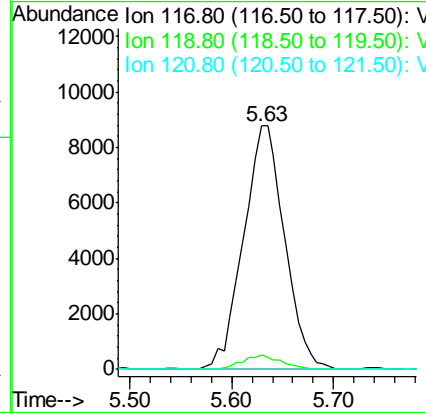
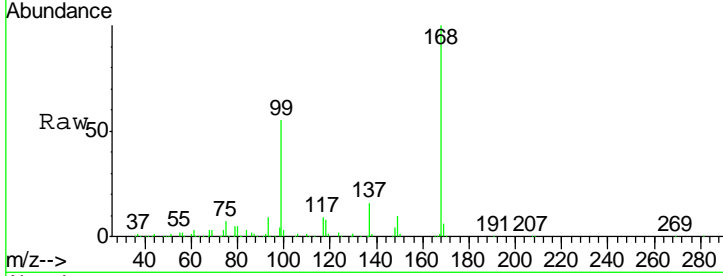




#38
 Carbon Tetrachloride
 Concen: 5.834 ug/l
 RT: 5.63 min Scan# 745
 Delta R.T. -0.13 min
 Lab File: VX016316.D
 Acq: 18 May 2020 22:13

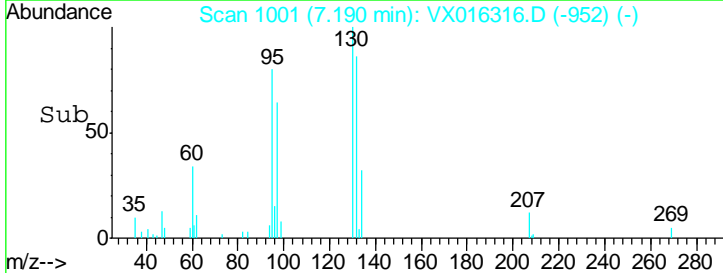
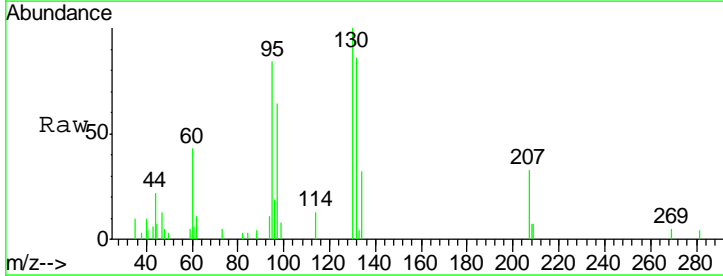
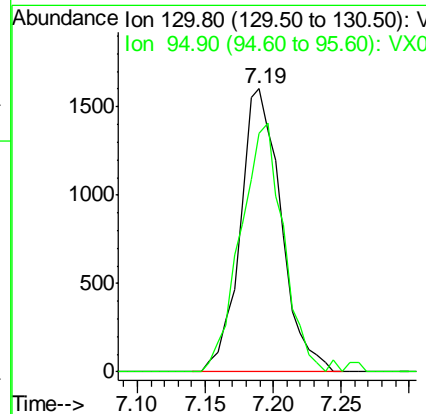
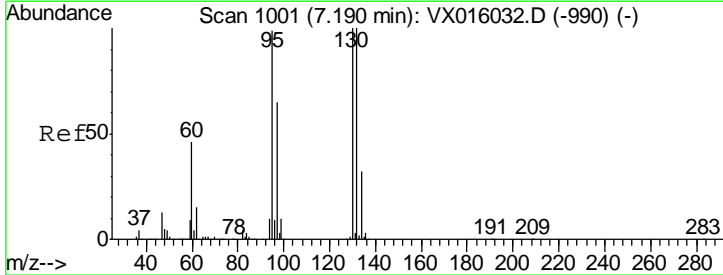
Instrument :
 MSVOA_X
 ClientSampled :

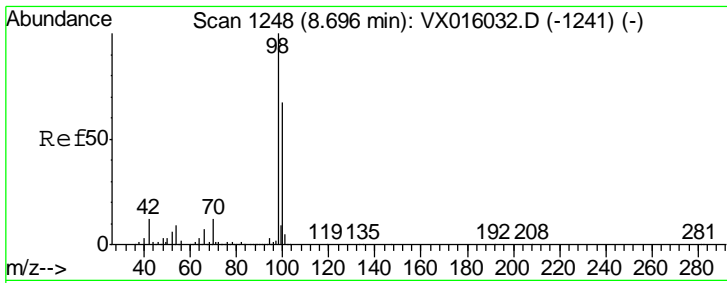
Tgt Ion	Resp	Lower	Upper
117	100		
119	6.2	80.3	120.5#
121	0.0	25.7	38.5#



#44
 Trichloroethene
 Concen: 0.782 ug/l
 RT: 7.19 min Scan# 1001
 Delta R.T. -0.00 min
 Lab File: VX016316.D
 Acq: 18 May 2020 22:13

Tgt Ion	Resp	Lower	Upper
130	100		
95	84.1	0.0	197.4

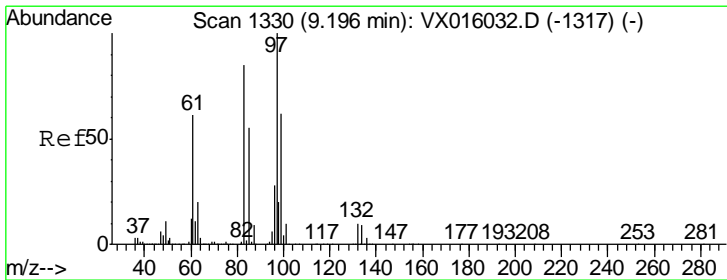
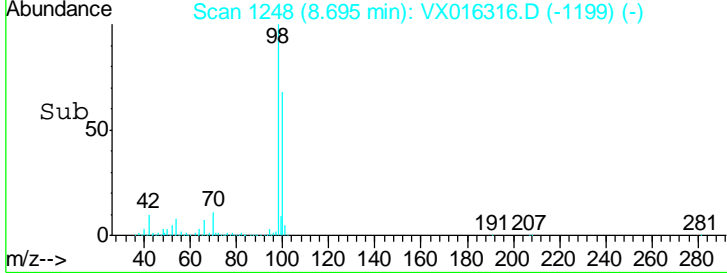
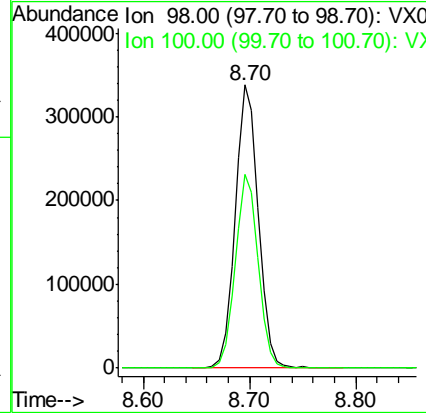
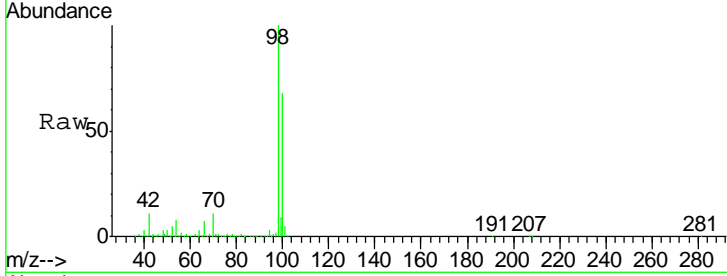




#50
 Toluene-d8
 Concen: 50.117 ug/l
 RT: 8.70 min Scan# 1248
 Delta R.T. -0.00 min
 Lab File: VX016316.D
 Acq: 18 May 2020 22:13

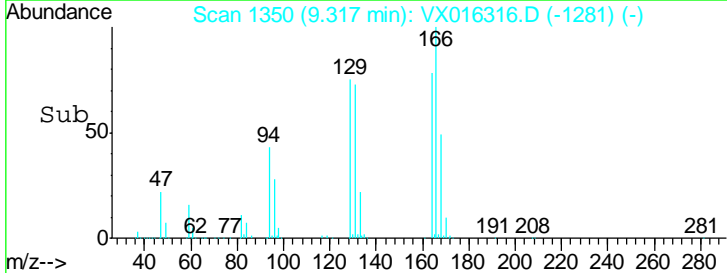
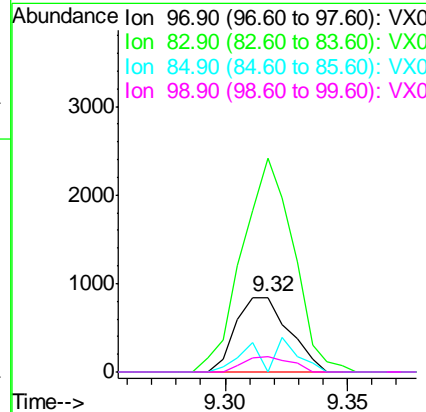
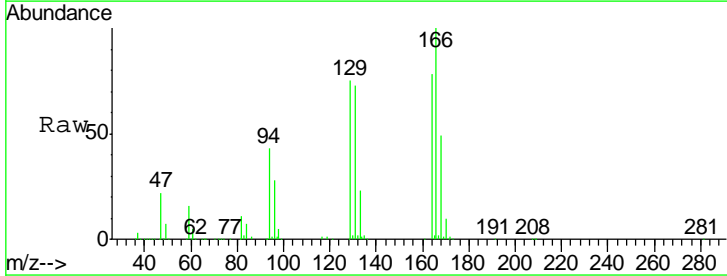
Instrument :
 MSVOA_X
 ClientSampled :

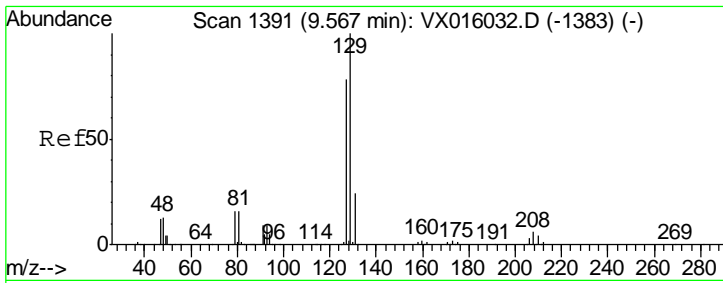
Tgt Ion	Resp	Lower	Upper
98	515016		
98	100		
100	67.9	53.7	80.5



#55
 1,1,2-Trichloroethane
 Concen: 0.426 ug/l
 RT: 9.32 min Scan# 1350
 Delta R.T. 0.12 min
 Lab File: VX016316.D
 Acq: 18 May 2020 22:13

Tgt Ion	Resp	Lower	Upper
97	1267		
97	100		
83	285.7	67.8	101.8#
85	0.0	43.8	65.8#
99	20.8	49.4	74.0#

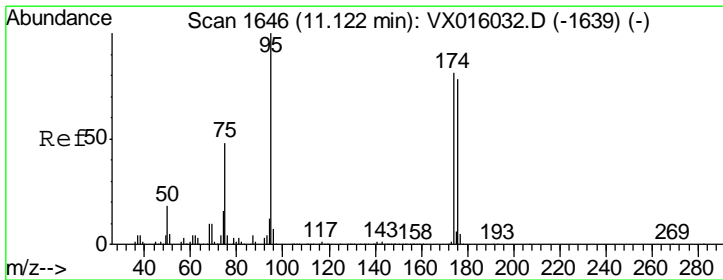
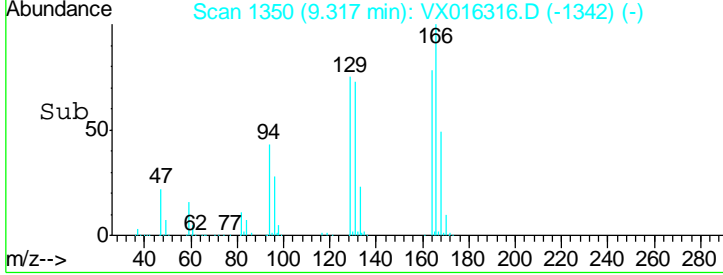
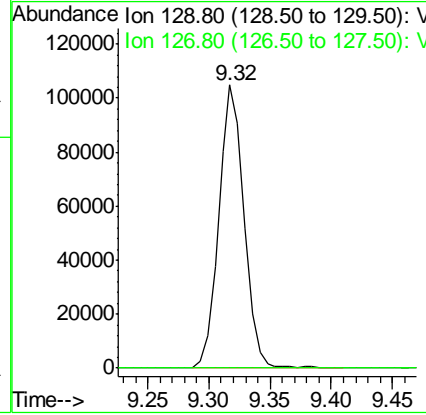
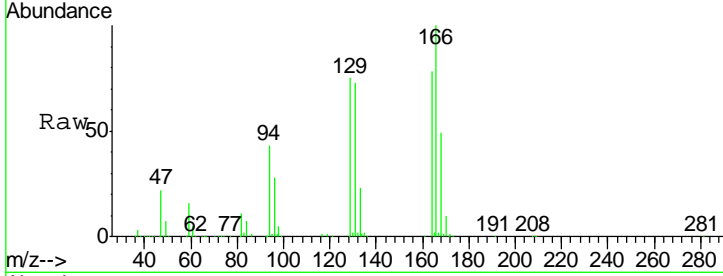




#60
 Dibromochloromethane
 Concen: 45.343 ug/l
 RT: 9.32 min Scan# 1350
 Delta R.T. -0.25 min
 Lab File: VX016316.D
 Acq: 18 May 2020 22:13

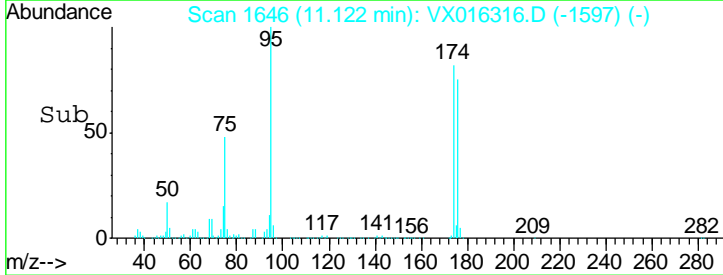
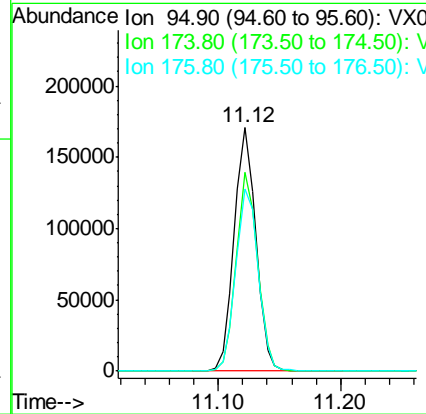
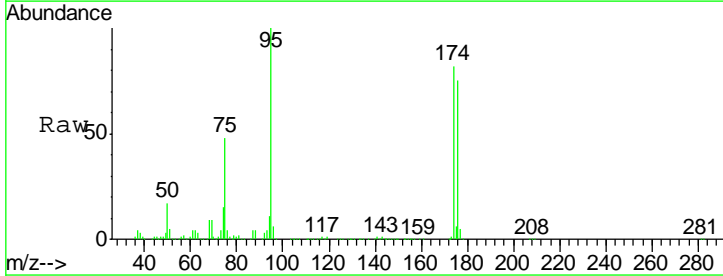
Instrument :
 MSVOA_X
 ClientSampled :

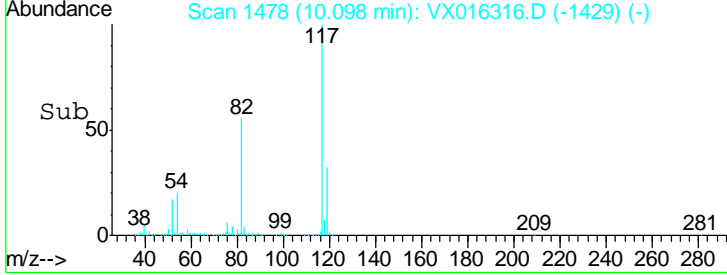
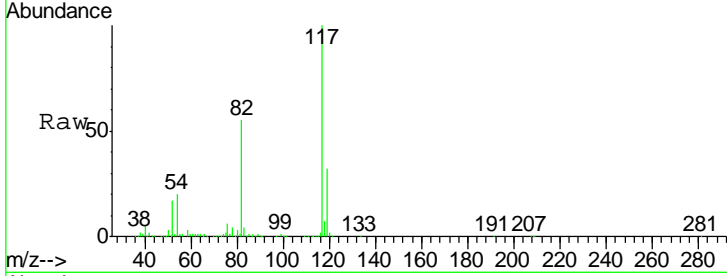
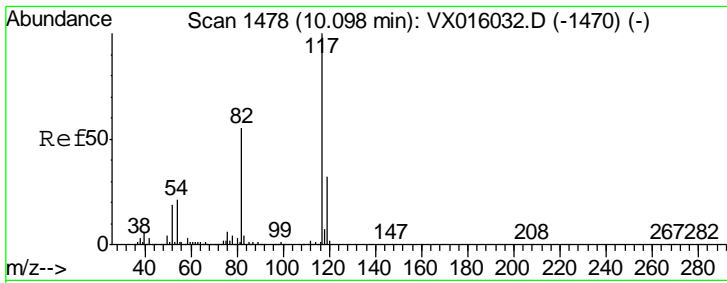
Tgt Ion	Resp	Lower	Upper
129	148490		
127	0.0	38.4	115.2#



#62
 4-Bromofluorobenzene
 Concen: 53.404 ug/l
 RT: 11.12 min Scan# 1646
 Delta R.T. -0.00 min
 Lab File: VX016316.D
 Acq: 18 May 2020 22:13

Tgt Ion	Resp	Lower	Upper
95	208735		
174	80.3	0.0	159.4
176	77.4	0.0	157.6

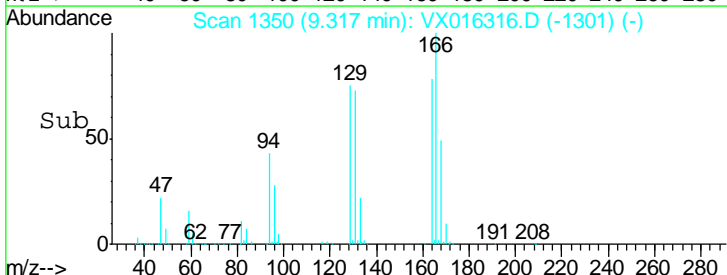
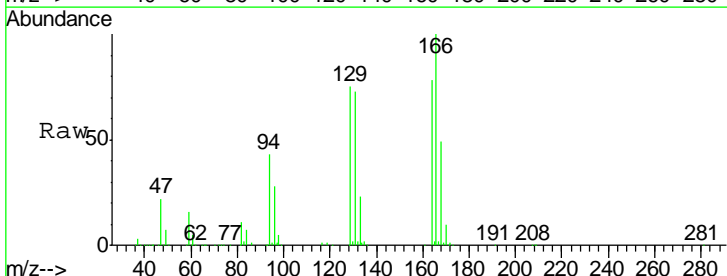
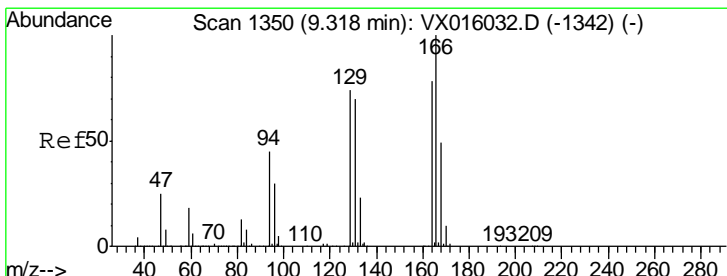
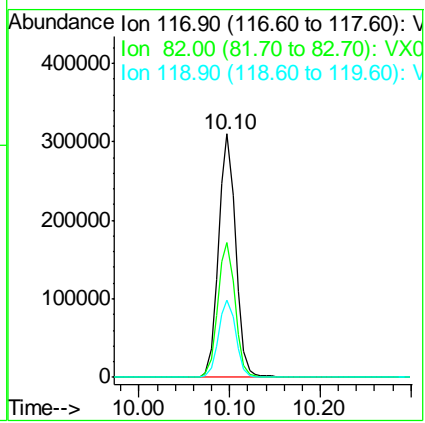




#63
 Chlorobenzene-d5
 Concen: 50.000 ug/l
 RT: 10.10 min Scan# 1478
 Delta R.T. -0.00 min
 Lab File: VX016316.D
 Acq: 18 May 2020 22:13

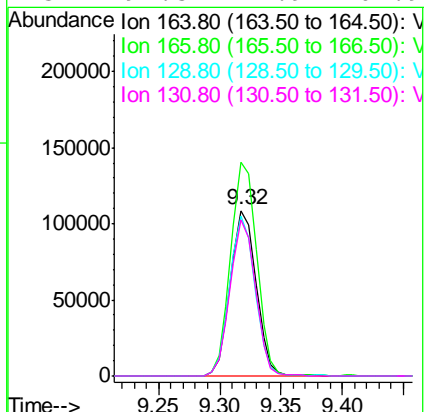
Instrument : MSVOA_X
 ClientSampled :

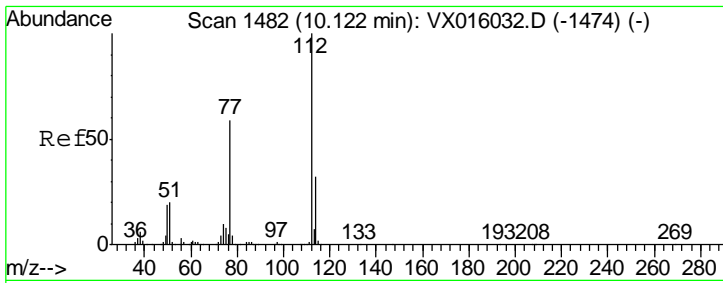
Tgt Ion	Resp	Lower	Upper
117	411467		
82	55.4	44.4	66.6
119	31.9	25.5	38.3



#64
 Tetrachloroethene
 Concen: 31.621 ug/l
 RT: 9.32 min Scan# 1350
 Delta R.T. -0.00 min
 Lab File: VX016316.D
 Acq: 18 May 2020 22:13

Tgt Ion	Resp	Lower	Upper
164	159729		
166	128.9	102.9	154.3
129	96.3	76.1	114.1
131	94.5	71.9	107.9

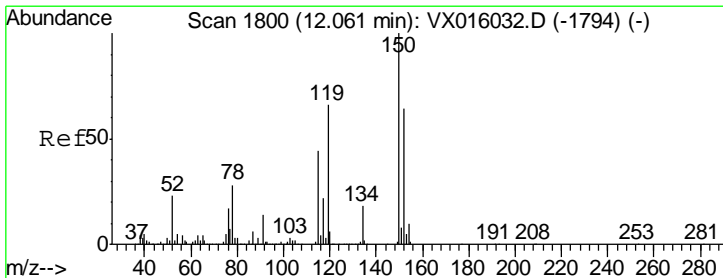
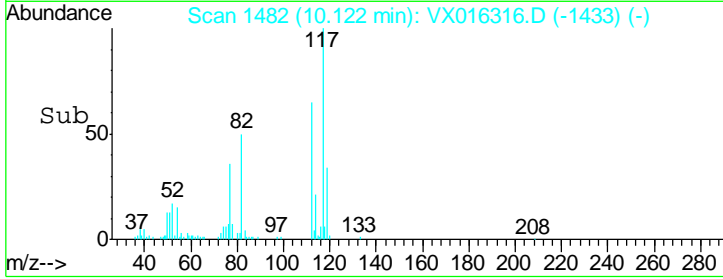
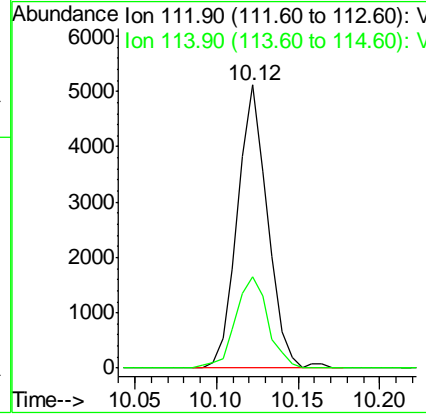
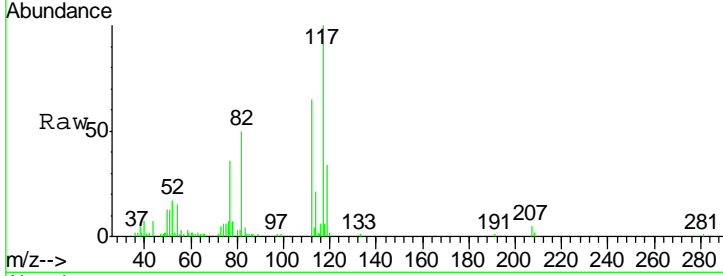




#65
 Chlorobenzene
 Concen: 0.761 ug/l
 RT: 10.12 min Scan# 1482
 Delta R.T. -0.00 min
 Lab File: VX016316.D
 Acq: 18 May 2020 22:13

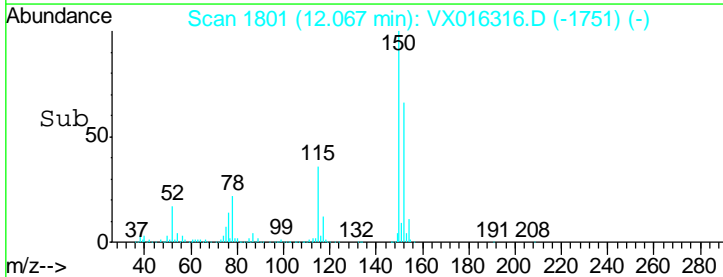
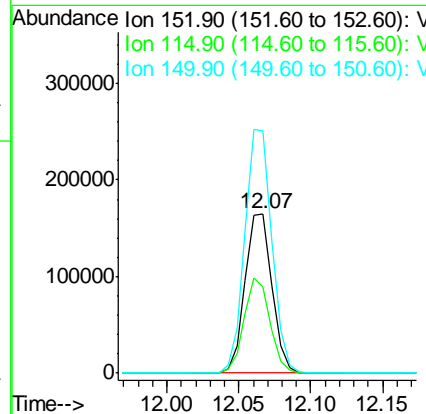
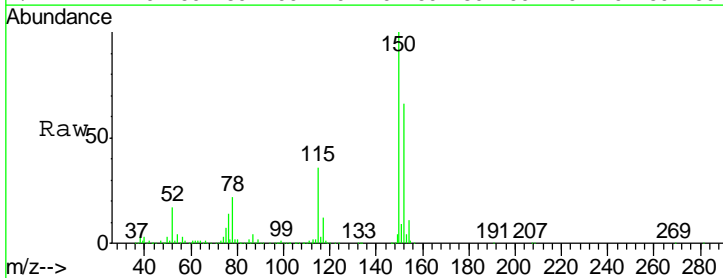
Instrument : MSVOA_X
 ClientSampled :

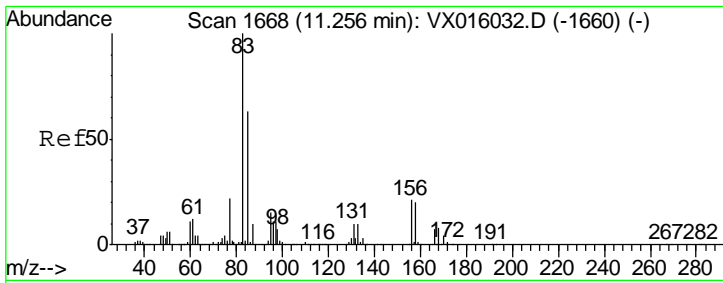
Tgt Ion	Resp	Lower	Upper
112	6558		
114	32.3	25.7	38.5



#72
 1,4-Dichlorobenzene-d4
 Concen: 50.000 ug/l
 RT: 12.07 min Scan# 1801
 Delta R.T. 0.01 min
 Lab File: VX016316.D
 Acq: 18 May 2020 22:13

Tgt Ion	Resp	Lower	Upper
152	213612		
115	57.4	41.3	124.1
150	153.8	0.0	352.2

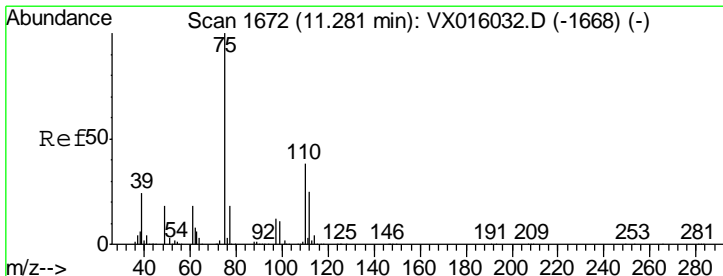
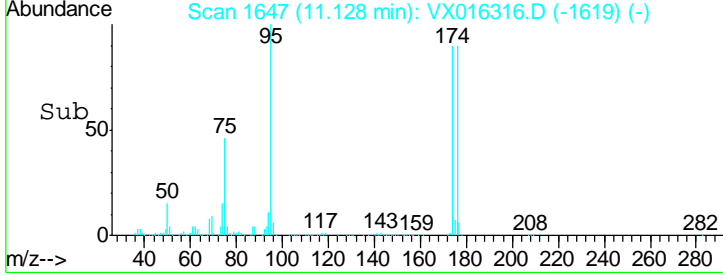
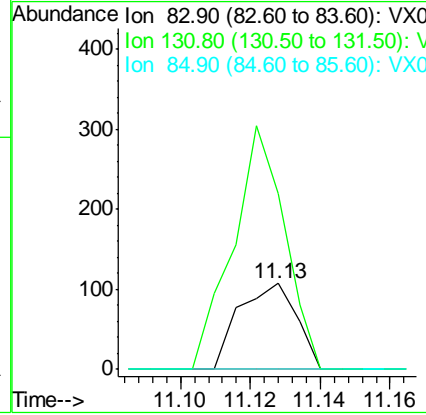
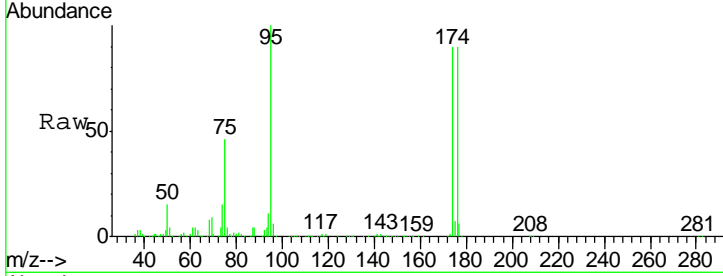




#75
 1,1,2,2-Tetrachloroethane
 Concen: 2.091 ug/l
 RT: 11.13 min Scan# 1647
 Delta R.T. -0.13 min
 Lab File: VX016316.D
 Acq: 18 May 2020 22:13

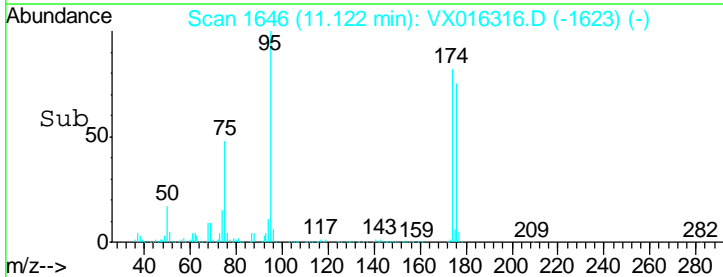
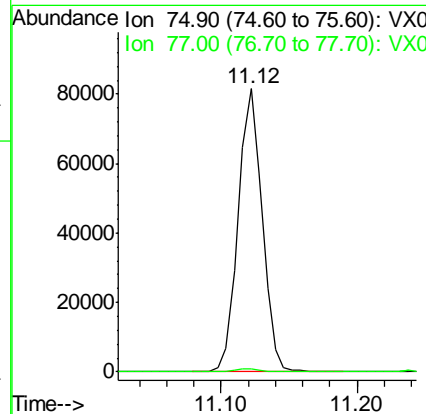
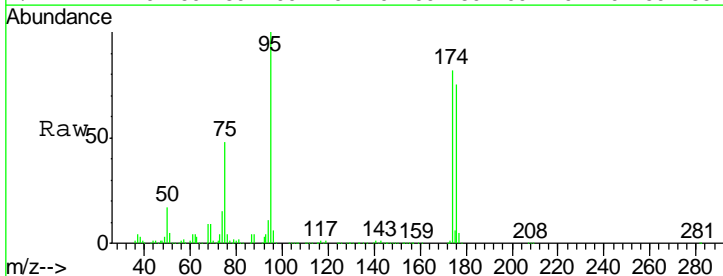
Instrument :
 MSVOA_X
 ClientSampled :

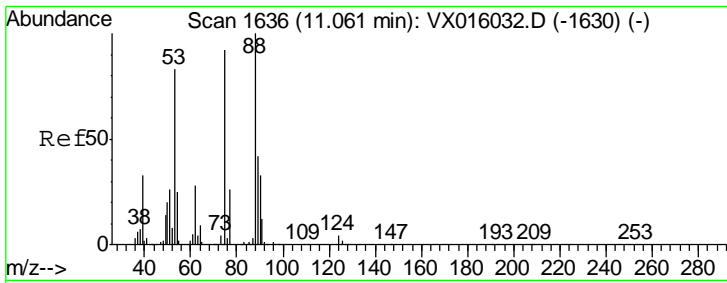
Tgt Ion	Resp	Lower	Upper
83	100		
131	256.6	5.1	15.4#
85	0.0	32.0	96.0#



#76
 1,2,3-Trichloropropane
 Concen: 20.717 ug/l
 RT: 11.12 min Scan# 1646
 Delta R.T. -0.16 min
 Lab File: VX016316.D
 Acq: 18 May 2020 22:13

Tgt Ion	Resp	Lower	Upper
75	100		
77	1.2	21.2	63.6#

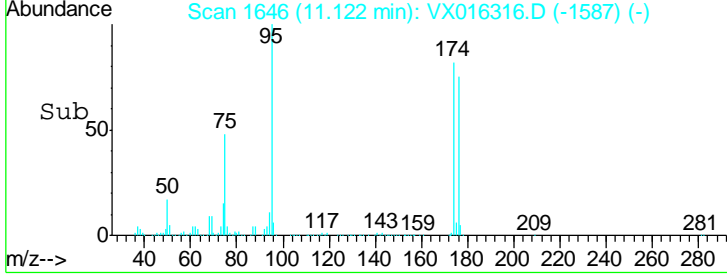
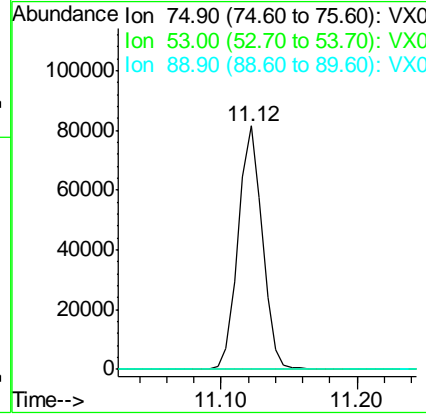
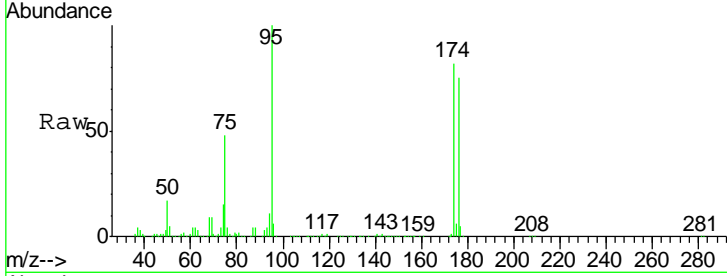




#81
 trans-1,4-Dichloro-2-butene
 Concen: 49.371 ug/l
 RT: 11.12 min Scan# 1646
 Delta R.T. 0.06 min
 Lab File: VX016316.D
 Acq: 18 May 2020 22:13

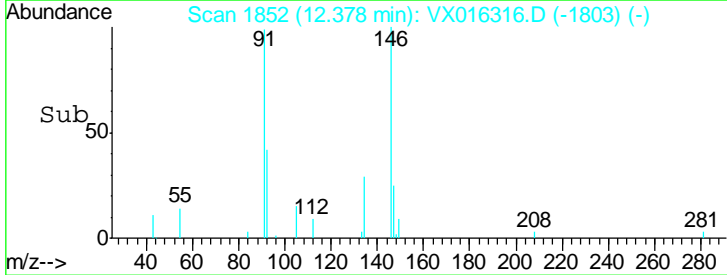
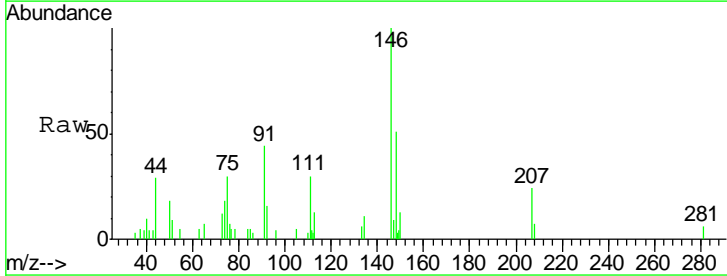
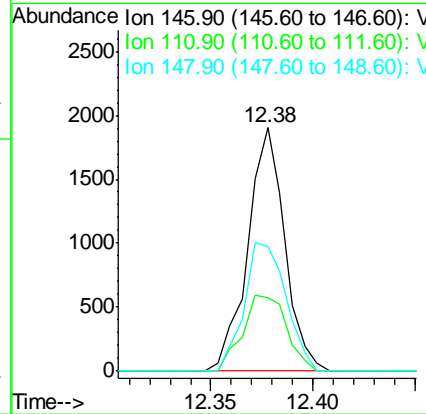
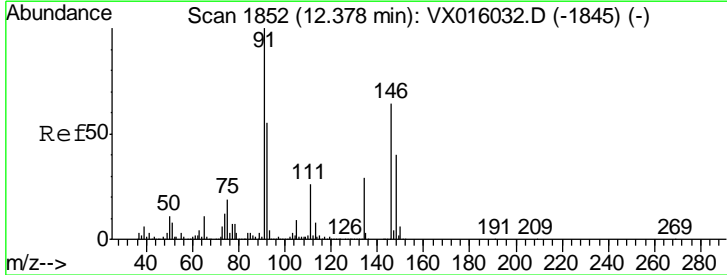
Instrument : MSVOA_X
 ClientSampled :

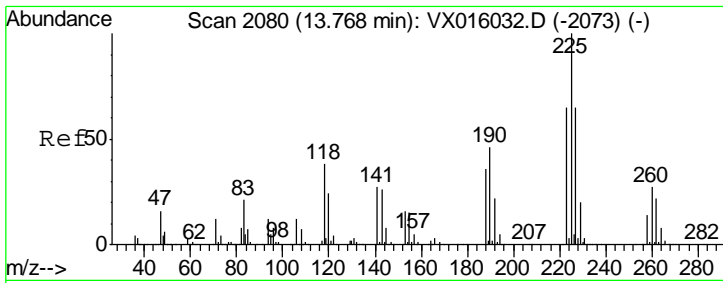
Tgt Ion	Resp	Lower	Upper
75	100		
53	0.0	73.1	109.7#
89	0.0	36.7	55.1#



#91
 1,2-Dichlorobenzene
 Concen: 0.346 ug/l
 RT: 12.38 min Scan# 1852
 Delta R.T. -0.00 min
 Lab File: VX016316.D
 Acq: 18 May 2020 22:13

Tgt Ion	Resp	Lower	Upper
146	100		
111	37.0	21.1	63.1
148	59.4	32.4	97.0





#94
 Hexachlorobutadiene
 Concen: 0.826 ug/l
 RT: 13.76 min Scan# 2079
 Delta R.T. -0.01 min
 Lab File: VX016316.D
 Acq: 18 May 2020 22:13

Instrument :
 MSVOA_X
 ClientSampled :

Tot Ion: 225 Resp: 675

Ion	Ratio	Lower	Upper
225	100		
223	62.2	32.3	96.9
227	56.4	31.8	95.4

