

Data Path : Z:\VOASRV\HPCHEM1\MSVOA X\DATA\VX051820\  
 Data File : VX016314.D  
 Acq On : 18 May 2020 21:28  
 Operator : JC/SP  
 Sample : L2672-08 20X  
 Misc : 5.0mL/MSVOA X/WATER  
 ALS Vial : 21 Sample Multiplier: 1

Instrument :  
 MSVOA\_X  
 ClientSampleId :  
 W/P021MW347-200514

Integration Parameters: RTEINT.P

Integrator: RTE  
 Smoothing : ON Filtering: 5  
 Sampling : 1 Min Area: 3 % of largest Peak  
 Start Thrs: 0.2 Max Peaks: 100  
 Stop Thrs : 0 Peak Location: TOP

If leading or trailing edge < 100 prefer < Baseline drop else tangent >  
 Peak separation: 5

Method : Z:\VOASRV\HPCHEM1\MSVOA\_X\METHOD\82X050420W.M  
 Title : SW846 8260

Signal : TIC

peak #	R.T. min	first scan	max scan	last scan	PK TY	peak height	corr. area	corr. % max.	% of total
1	1.392	47	50	60	rVB	313741	304742	5.15%	2.077%
2	4.568	557	571	600	rBV	2141511	5917597	100.00%	40.326%
3	5.470	707	719	730	rBV2	142079	406348	6.87%	2.769%
4	5.635	735	746	759	rVB	265712	737196	12.46%	5.024%
5	6.037	799	812	821	rBV	158202	418349	7.07%	2.851%
6	6.836	932	943	957	rBV	409299	968713	16.37%	6.601%
7	7.190	991	1001	1016	rBV	450132	940440	15.89%	6.409%
8	8.695	1240	1248	1256	rBV	860767	1339697	22.64%	9.130%
9	10.098	1472	1478	1491	rBV	891070	1348228	22.78%	9.188%
10	11.122	1640	1646	1657	rBV	774907	970207	16.40%	6.612%
11	12.061	1795	1800	1808	rVB	984164	1259166	21.28%	8.581%
12	12.372	1845	1851	1857	rVB	47215	63674	1.08%	0.434%

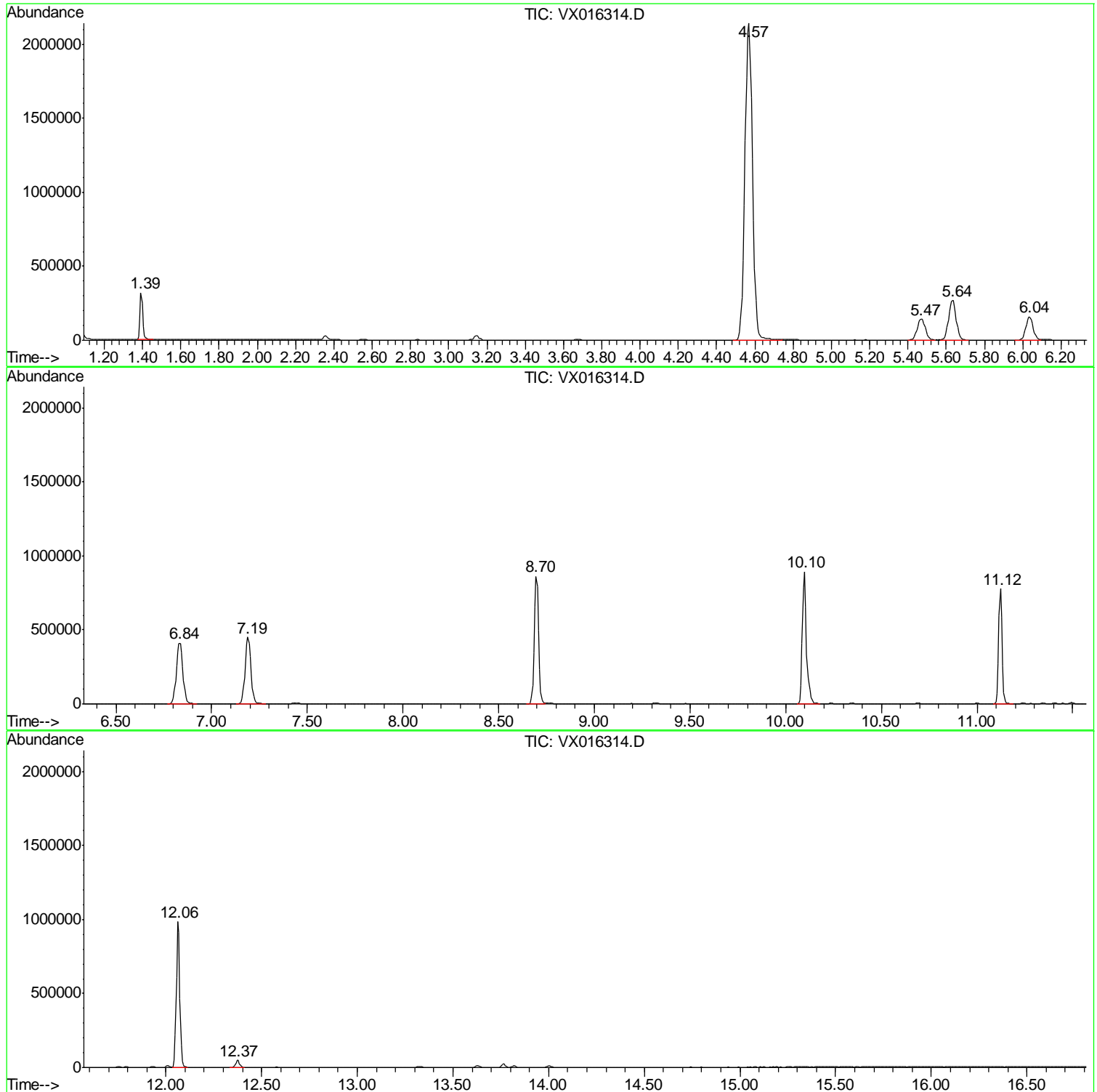
Sum of corrected areas: 14674357

Data Path : Z:\VOASRV\HPCHEM1\MSVOA X\DATA\VX051820\  
Data File : VX016314.D  
Acq On : 18 May 2020 21:28  
Operator : JC/SP  
Sample : L2672-08 20X  
Misc : 5.0mL/MSVOA X/WATER  
ALS Vial : 21 Sample Multiplier: 1

Instrument :  
MSVOA\_X  
ClientSampled :  
WP021MW347-200514

Quant Method : Z:\VOASRV\HPCHEM1\MSVOA\_X\METHOD\82X050420W.M  
Quant Title : SW846 8260

TIC Library : C:\DATABASE\NIST11.L  
TIC Integration Parameters: LSCINT.P



Data Path : Z:\VOASRV\HPCHEM1\MSVOA\_X\DATA\VX051820\  
Data File : VX016314.D  
Acq On : 18 May 2020 21:28  
Operator : JC/SP  
Sample : L2672-08 20X  
Misc : 5.0mL/MSVOA\_X/WATER  
ALS Vial : 21 Sample Multiplier: 1

Instrument :  
MSVOA\_X  
ClientSampleId :  
WP021MW347-200514

Quant Method : Z:\VOASRV\HPCHEM1\MSVOA\_X\METHOD\82X050420W.M  
Quant Title : SW846 8260

TIC Library : C:\DATABASE\NIST11.L  
TIC Integration Parameters: LSCINT.P

No Library Search Compounds Detected

\*\*\*\*\*

Data Path : Z:\VOASRV\HPCHEM1\MSVOA\_X\DATA\VX051820\  
Data File : VX016314.D  
Acq On : 18 May 2020 21:28  
Operator : JC/SP  
Sample : L2672-08 20X  
Misc : 5.0mL/MSVOA\_X/WATER  
ALS Vial : 21 Sample Multiplier: 1

Instrument :  
MSVOA\_X  
ClientSampleId :  
WP021MW347-200514

Quant Method : Z:\VOASRV\HPCHEM1\MSVOA\_X\METHOD\82X050420W.M  
Quant Title : SW846 8260

TIC Library : C:\DATABASE\NIST11.L  
TIC Integration Parameters: LSCINT.P

TIC Top Hit name	RT	EstConc	Units	Response	--Internal Standard--			
					#	RT	Resp	Conc

---