

Data Path : Z:\VOASRV\HPCHEM1\MSVOA X\DATA\VX051920\
 Data File : VX016337.D
 Acq On : 19 May 2020 16:13
 Operator : JC/SP
 Sample : L2672-06
 Misc : 5.0mL/MSVOA X/WATER
 ALS Vial : 17 Sample Multiplier: 1

Instrument :
 MSVOA_X
 ClientSampleId :
 W/P021MW038-200514

Quant Time: May 20 03:48:19 2020
 Quant Method : Z:\VOASRV\HPCHEM1\MSVOA_X\METHOD\82X050420W.M
 Quant Title : SW846 8260
 QLast Update : Wed May 06 06:43:32 2020
 Response via : Initial Calibration

Internal Standards	R.T.	QIon	Response	Conc	Units	Dev(Min)
1) Pentafluorobenzene	5.63	168	226236	50.00	ug/l	0.00
34) 1,4-Difluorobenzene	6.83	114	377482	50.00	ug/l	0.00
63) Chlorobenzene-d5	10.10	117	372275	50.00	ug/l	0.00
72) 1,4-Dichlorobenzene-d4	12.07	152	189371	50.00	ug/l	0.00

System Monitoring Compounds

33) 1,2-Dichloroethane-d4	6.04	65	134139	45.06	ug/l	0.00
Spiked Amount	50.000		Recovery	=	90.12%	
35) Dibromofluoromethane	5.47	113	109250	45.68	ug/l	0.00
Spiked Amount	50.000		Recovery	=	91.36%	
50) Toluene-d8	8.70	98	465633	50.53	ug/l	0.00
Spiked Amount	50.000		Recovery	=	101.06%	
62) 4-Bromofluorobenzene	11.12	95	188961	53.91	ug/l	0.00
Spiked Amount	50.000		Recovery	=	107.82%	

Target Compounds

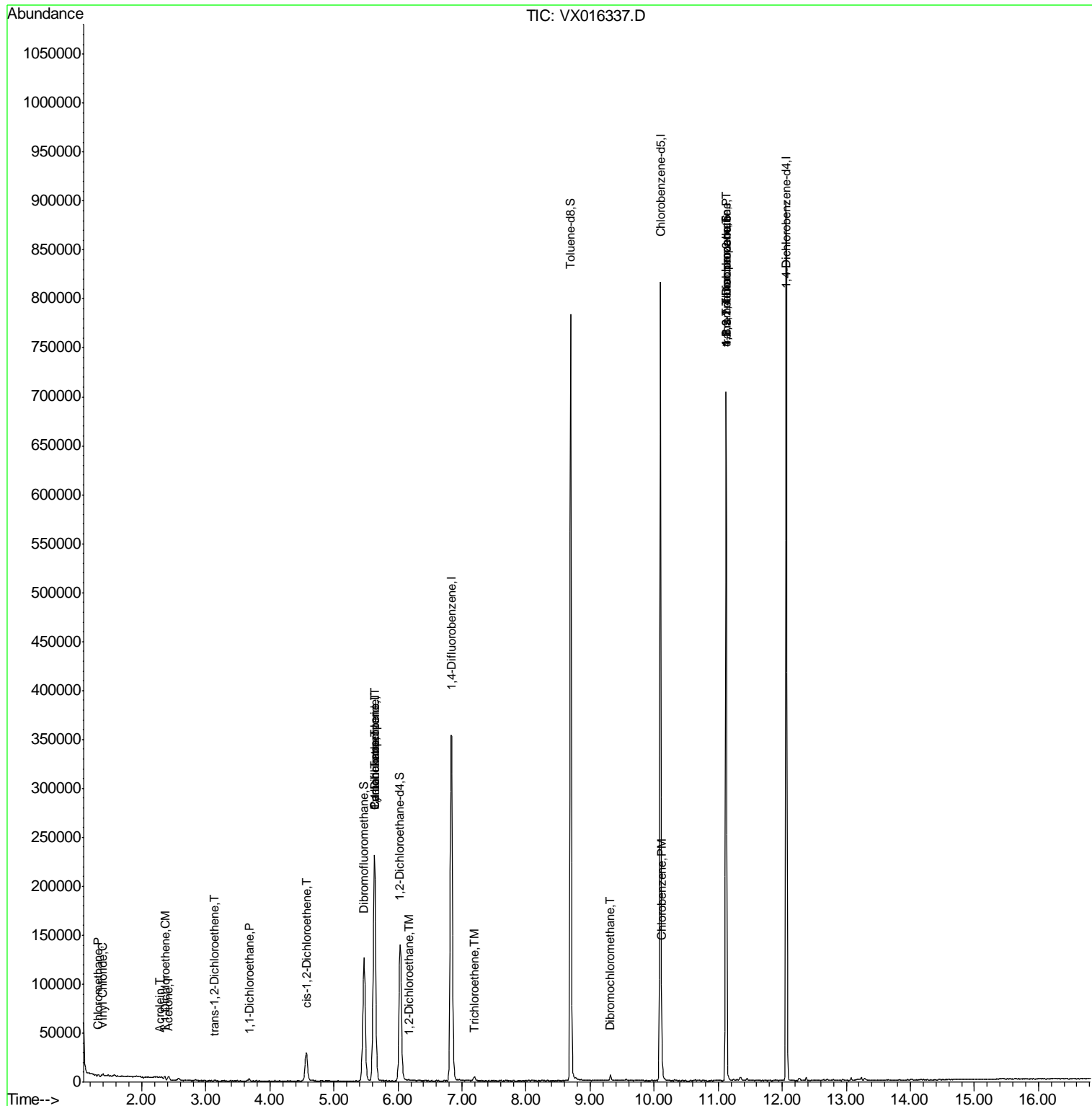
					Qvalue	
3) Chloromethane	1.31	50	1108	0.398	ug/l	95
4) Vinyl Chloride	1.39	62	926	0.312	ug/l	100
12) 1,1-Dichloroethene	2.36	96	1483	0.631	ug/l	94
13) Acrolein	2.28	56	308	0.654	ug/l	97
16) Acetone	2.42	43	4272	3.216	ug/l	98
17) Carbon Disulfide	2.56	76	726	Below Cal	#	68
21) trans-1,2-Dichloroethene	3.14	96	660	0.252	ug/l #	26
24) 1,1-Dichloroethane	3.67	63	2020	0.444	ug/l #	94
27) cis-1,2-Dichloroethene	4.57	96	19803	6.912	ug/l	84
31) Cyclohexane	5.63	56	4098	0.991	ug/l #	1
36) 1,1-Dichloropropene	5.63	75	15927	4.286	ug/l #	49
38) Carbon Tetrachloride	5.63	117	21358	5.655	ug/l #	15
42) 1,2-Dichloroethane	6.17	62	978	0.250	ug/l #	74
44) Trichloroethene	7.20	130	1570	0.406	ug/l	71
60) Dibromochloromethane	9.32	129	594	0.202	ug/l #	11
65) Chlorobenzene	10.12	112	6927	0.889	ug/l	97
75) 1,1,2,2-Tetrachloroethane	11.12	83	27	2.059	ug/l #	1
76) 1,2,3-Trichloropropane	11.12	75	90718	21.111	ug/l #	35
81) trans-1,4-Dichloro-2-buten	11.12	75	90718	50.308	ug/l #	13

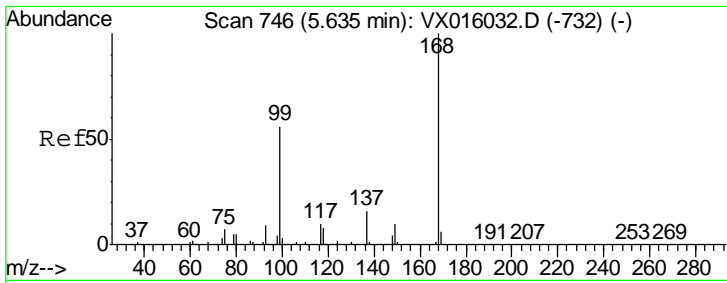
(#) = qualifier out of range (m) = manual integration (+) = signals summed

Data Path : Z:\VOASRV\HPCHEM1\MSVOA X\DATA\VX051920\
 Data File : VX016337.D
 Acq On : 19 May 2020 16:13
 Operator : JC/SP
 Sample : L2672-06
 Misc : 5.0mL/MSVOA X/WATER
 ALS Vial : 17 Sample Multiplier: 1

Instrument :
 MSVOA_X
 ClientSampled :
 W/P021MW038-200514

Quant Time: May 20 03:48:19 2020
 Quant Method : Z:\VOASRV\HPCHEM1\MSVOA_X\METHOD\82X050420W.M
 Quant Title : SW846 8260
 QLast Update : Wed May 06 06:43:32 2020
 Response via : Initial Calibration

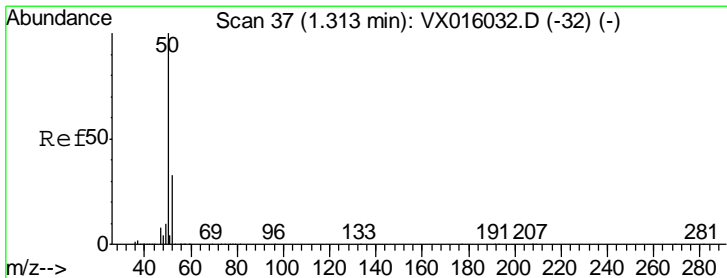
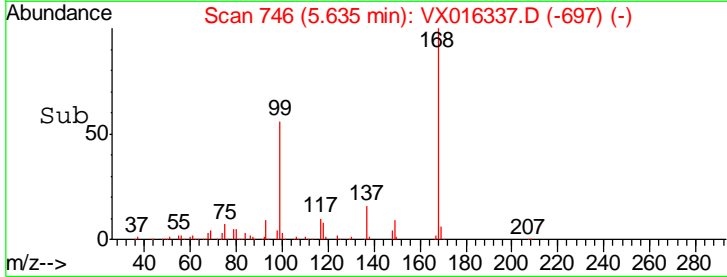
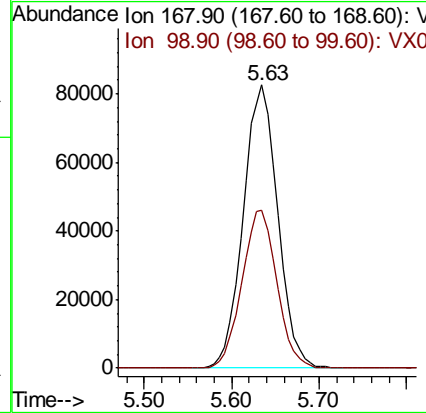
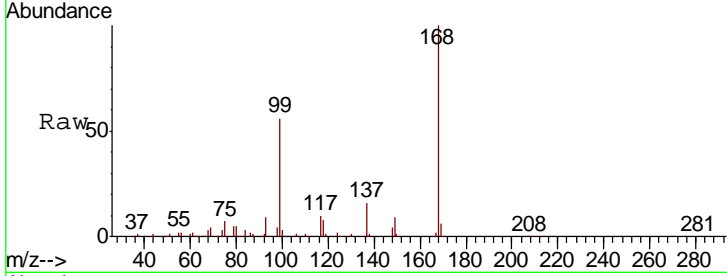




#1
 Pentafluorobenzene
 Concen: 50.000 ug/l
 RT: 5.63 min Scan# 746
 Delta R.T. -0.00 min
 Lab File: VX016337.D
 Acq: 19 May 2020 16:13

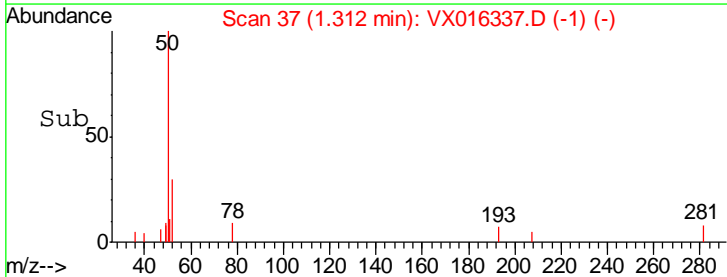
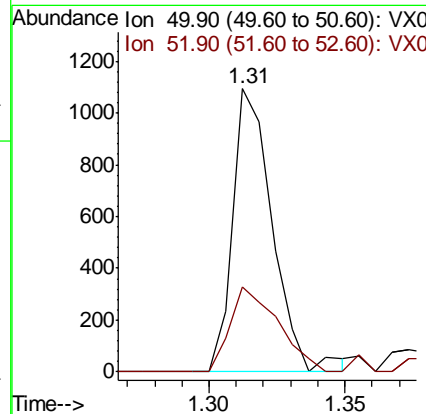
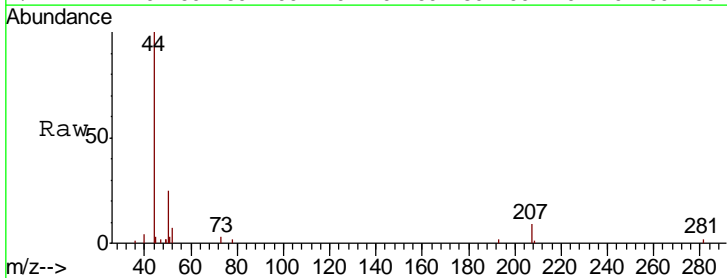
Instrument :
 MSVOA_X
 ClientSampleId :
 W/P021MW038-200514

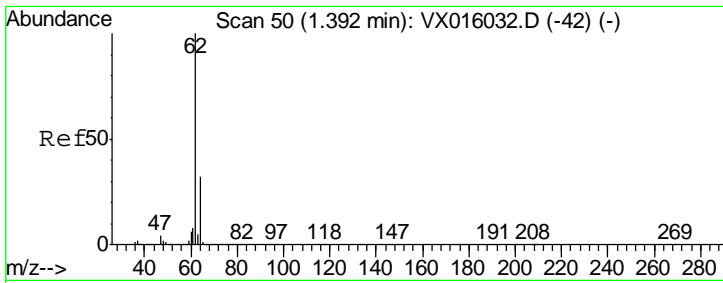
Tgt Ion	Resp	Lower	Upper
168	100		
99	55.9	45.0	67.4



#3
 Chloromethane
 Concen: 0.398 ug/l
 RT: 1.31 min Scan# 37
 Delta R.T. -0.00 min
 Lab File: VX016337.D
 Acq: 19 May 2020 16:13

Tgt Ion	Resp	Lower	Upper
50	100		
52	29.8	26.1	39.1

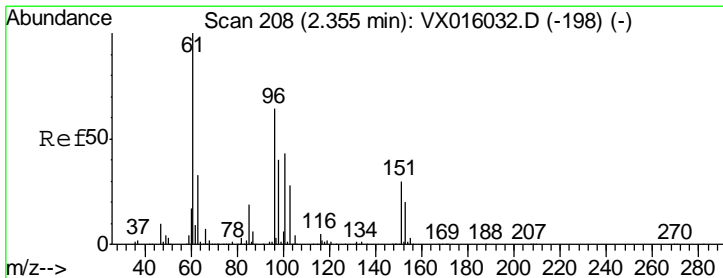
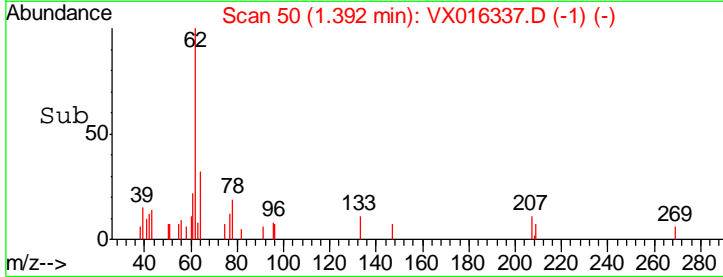
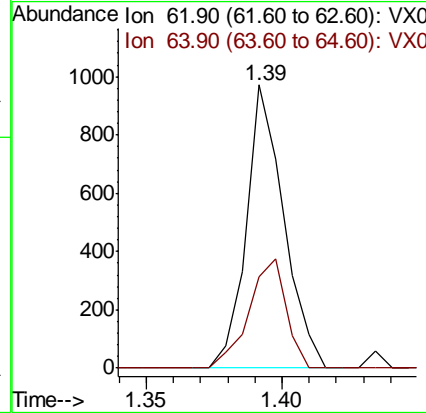
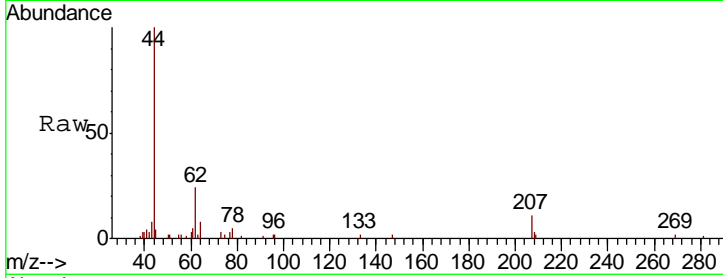




#4
 Vinyl Chloride
 Concen: 0.312 ug/l
 RT: 1.39 min Scan# 50
 Delta R.T. -0.00 min
 Lab File: VX016337.D
 Acq: 19 May 2020 16:13

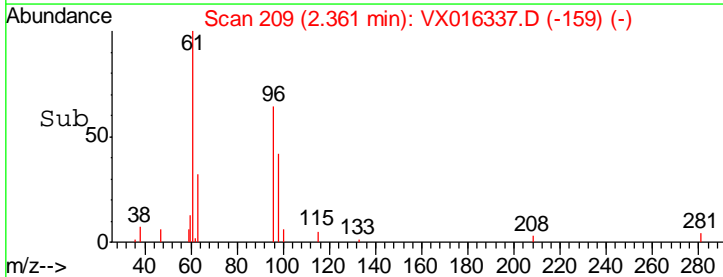
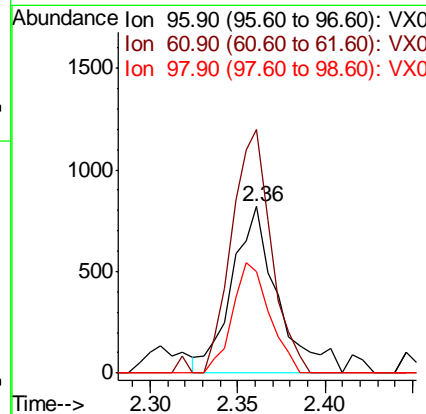
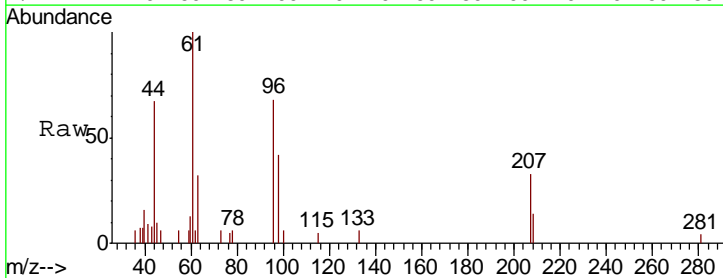
Instrument :
 MSVOA_X
ClientSampleId :
 W/P021MW038-200514

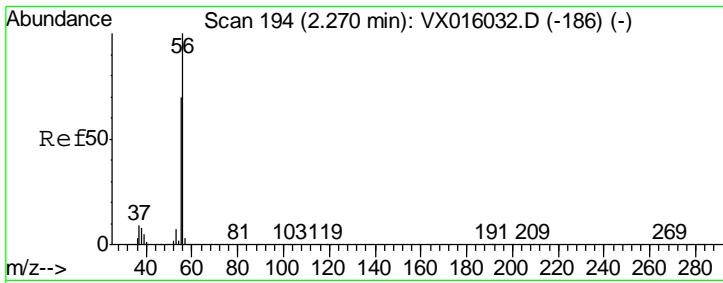
Tgt Ion	Resp	Lower	Upper
62	100		
64	32.3	25.7	38.5



#12
 1,1-Dichloroethene
 Concen: 0.631 ug/l
 RT: 2.36 min Scan# 209
 Delta R.T. 0.01 min
 Lab File: VX016337.D
 Acq: 19 May 2020 16:13

Tgt Ion	Resp	Lower	Upper
96	100		
61	146.3	124.8	187.2
98	60.9	49.7	74.5

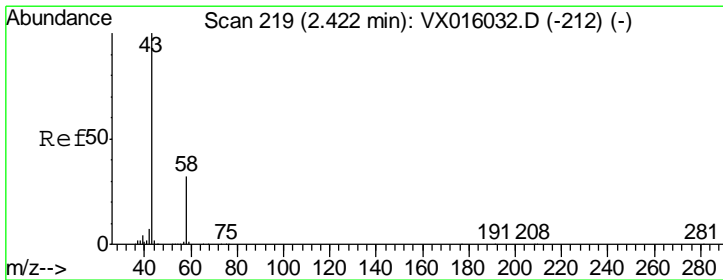
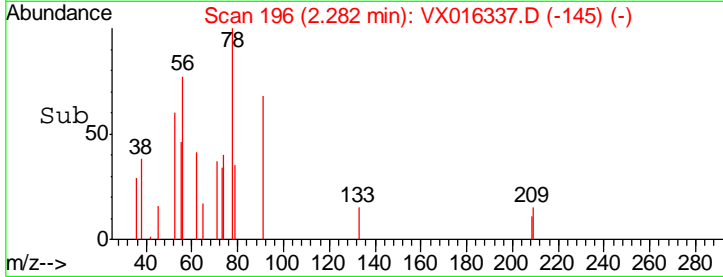
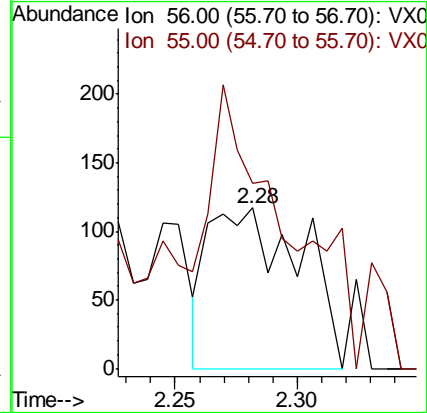
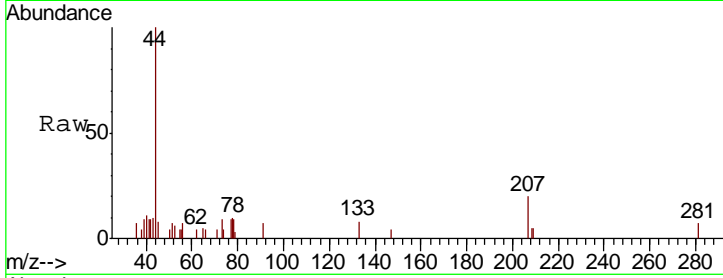




#13
 Acrolein
 Concen: 0.654 ug/l
 RT: 2.28 min Scan# 196
 Delta R.T. 0.01 min
 Lab File: VX016337.D
 Acq: 19 May 2020 16:13

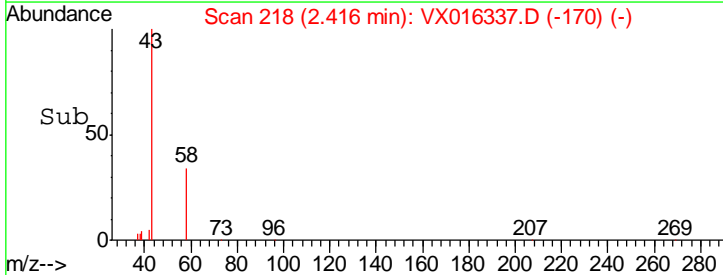
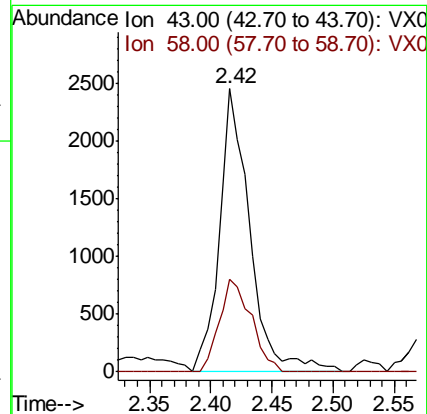
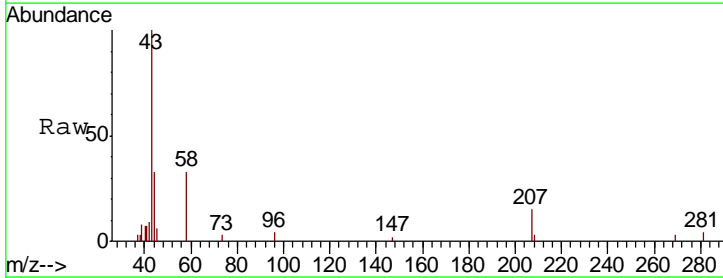
Instrument :
 MSVOA_X
 ClientSampleId :
 W/P021MW038-200514

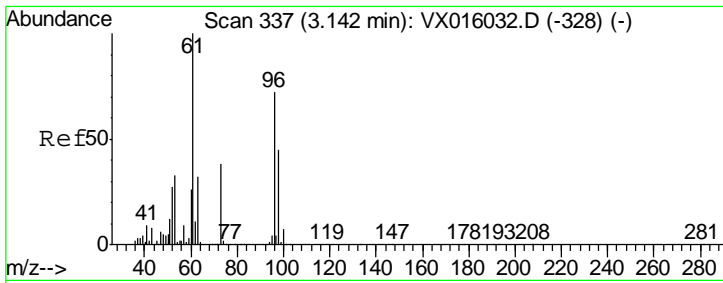
Tgt Ion: 56 Resp: 308
 Ion Ratio Lower Upper
 56 100
 55 68.5 56.5 84.7



#16
 Acetone
 Concen: 3.216 ug/l
 RT: 2.42 min Scan# 218
 Delta R.T. -0.01 min
 Lab File: VX016337.D
 Acq: 19 May 2020 16:13

Tgt Ion: 43 Resp: 4272
 Ion Ratio Lower Upper
 43 100
 58 32.6 25.4 38.0

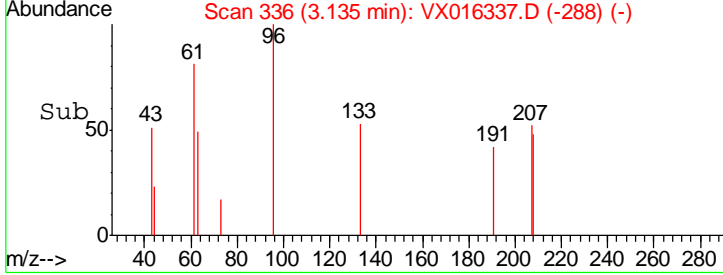
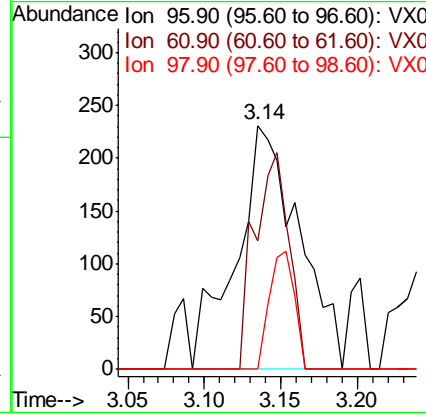
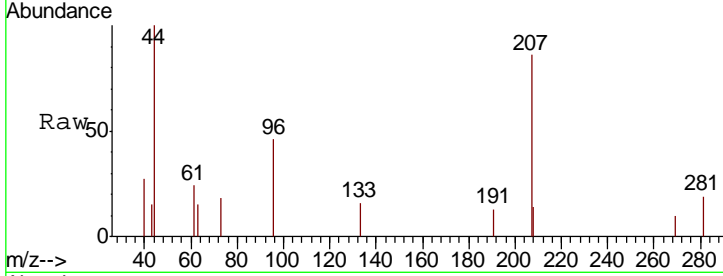




#21
 trans-1,2-Dichloroethene
 Concen: 0.252 ug/l
 RT: 3.14 min Scan# 336
 Delta R.T. -0.01 min
 Lab File: VX016337.D
 Acq: 19 May 2020 16:13

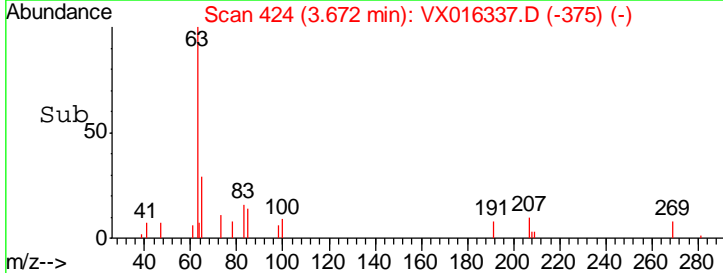
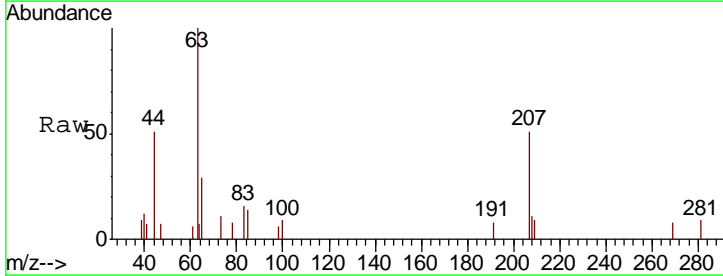
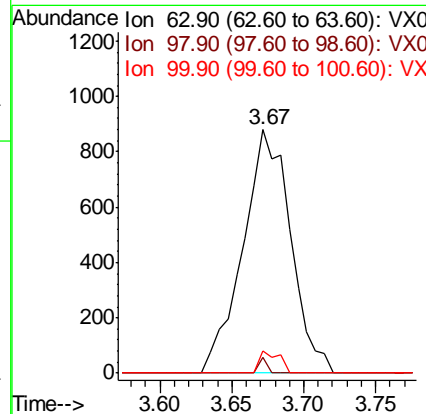
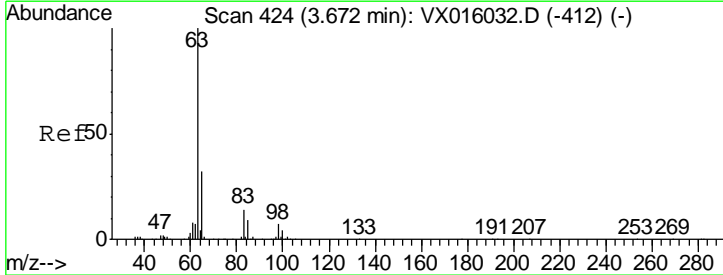
Instrument :
 MSVOA_X
ClientSampleId :
 W/P021MW038-200514

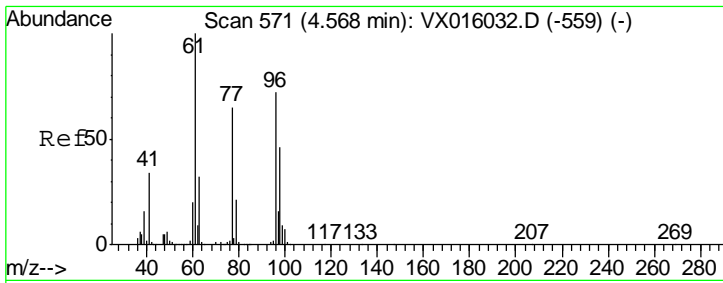
Tgt Ion	Resp	Lower	Upper
96	660		
Ion Ratio			
96	100		
61	52.8	111.2	166.8#
98	0.0	50.2	75.4#



#24
 1,1-Dichloroethane
 Concen: 0.444 ug/l
 RT: 3.67 min Scan# 424
 Delta R.T. -0.00 min
 Lab File: VX016337.D
 Acq: 19 May 2020 16:13

Tgt Ion	Resp	Lower	Upper
63	2020		
Ion Ratio			
63	100		
98	6.5	3.5	10.5
100	9.0	2.1	6.5#

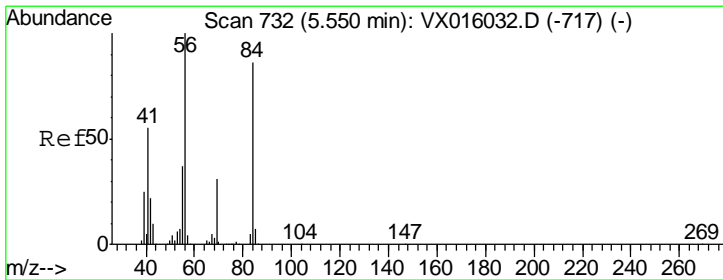
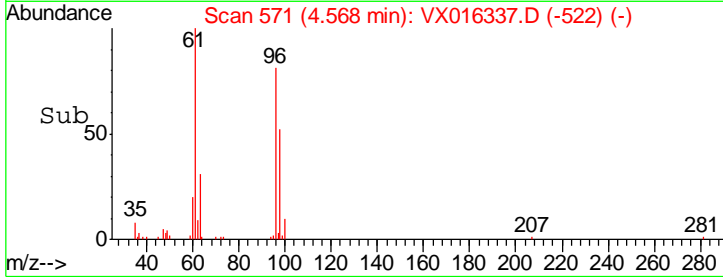
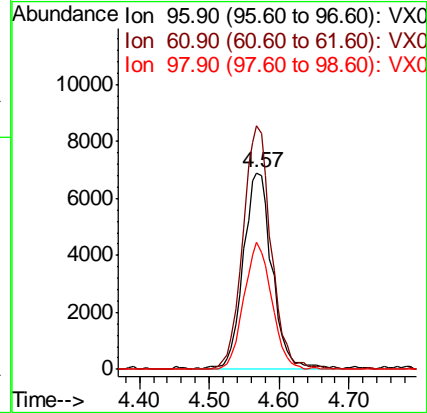
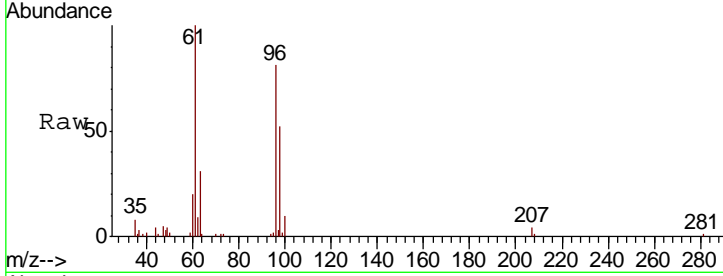




#27
 cis-1,2-Dichloroethene
 Concen: 6.912 ug/l
 RT: 4.57 min Scan# 571
 Delta R.T. -0.00 min
 Lab File: VX016337.D
 Acq: 19 May 2020 16:13

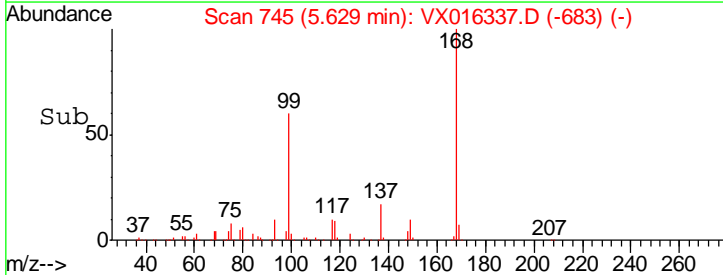
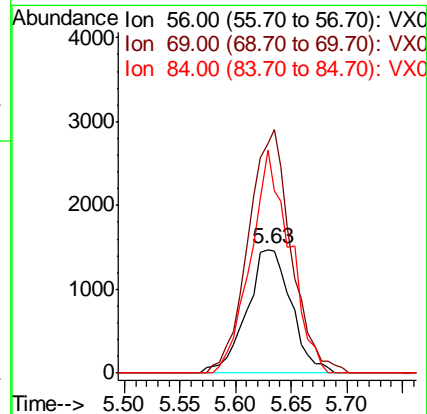
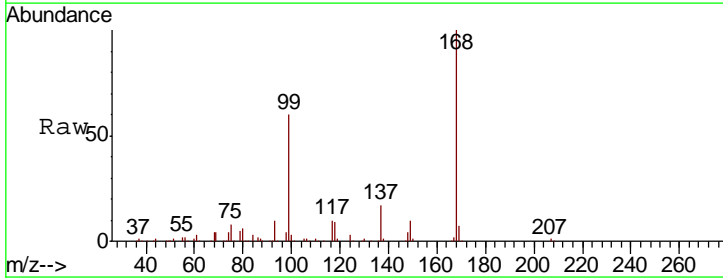
Instrument :
 MSVOA_X
 ClientSampleId :
 W/P021MW038-200514

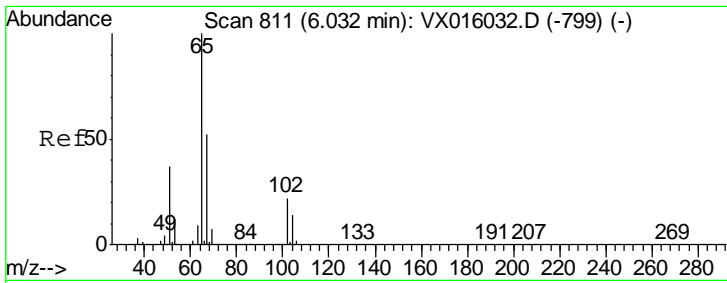
Tgt Ion	Resp	Lower	Upper
96	19803		
61	120.8	0.0	296.2
98	61.7	0.0	129.4



#31
 Cyclohexane
 Concen: 0.991 ug/l
 RT: 5.63 min Scan# 745
 Delta R.T. 0.08 min
 Lab File: VX016337.D
 Acq: 19 May 2020 16:13

Tgt Ion	Resp	Lower	Upper
56	4098		
69	186.1	25.0	37.6#
84	181.0	69.0	103.6#

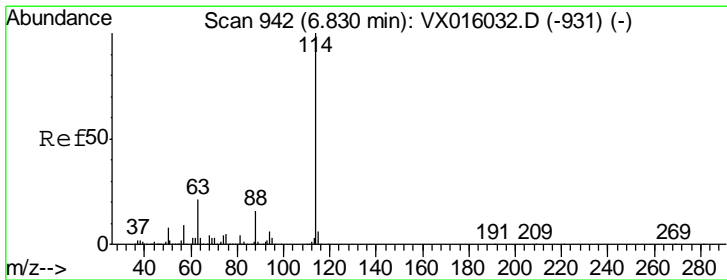
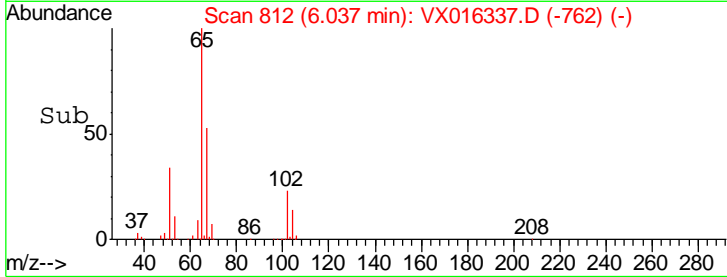
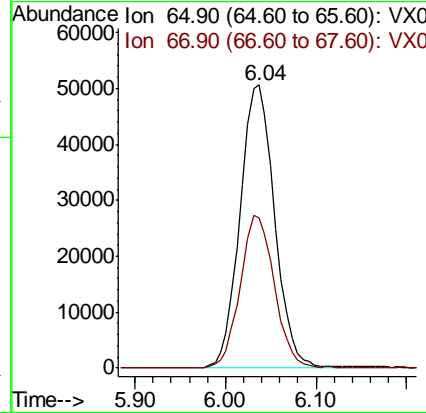
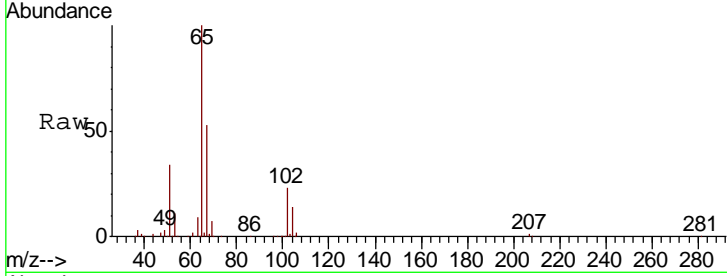




#33
 1,2-Dichloroethane-d4
 Concen: 45.058 ug/l
 RT: 6.04 min Scan# 812
 Delta R.T. 0.01 min
 Lab File: VX016337.D
 Acq: 19 May 2020 16:13

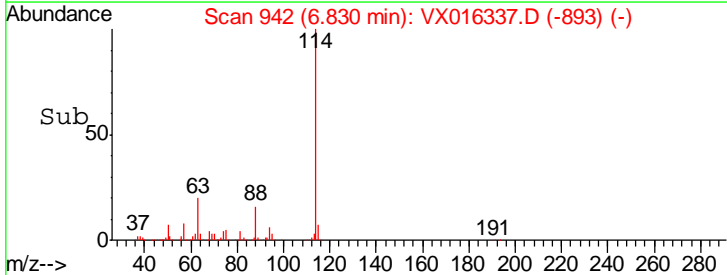
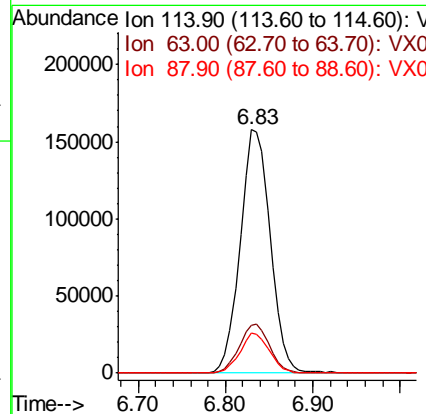
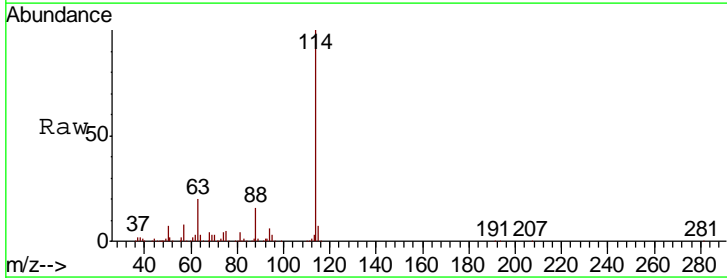
Instrument :
 MSVOA_X
 ClientSampleId :
 W/P021MW038-200514

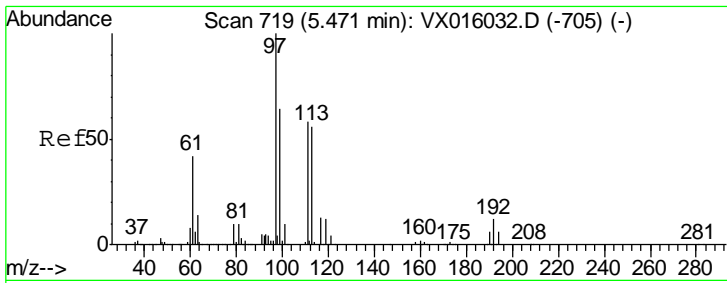
Tgt Ion	Resp	Lower	Upper
65	134139		
67	53.2	0.0	104.8



#34
 1,4-Difluorobenzene
 Concen: 50.000 ug/l
 RT: 6.83 min Scan# 942
 Delta R.T. -0.00 min
 Lab File: VX016337.D
 Acq: 19 May 2020 16:13

Tgt Ion	Resp	Lower	Upper
114	377482		
63	19.6	0.0	42.8
88	16.2	0.0	31.4

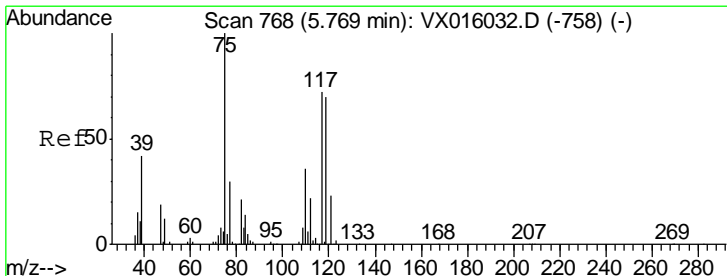
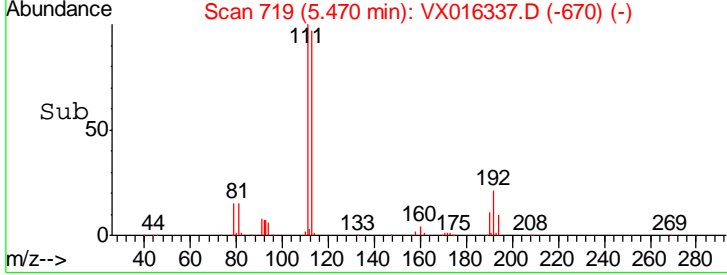
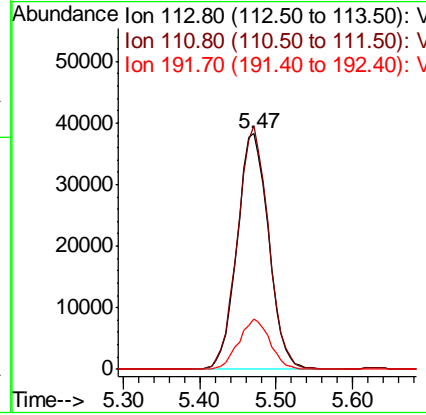
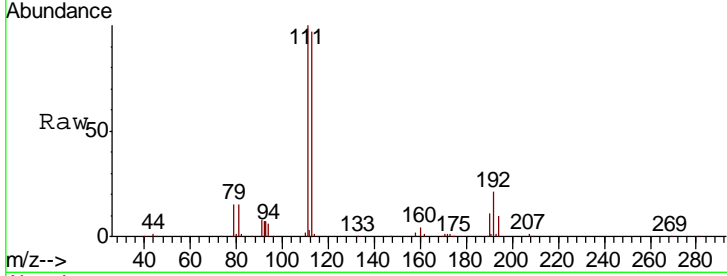




#35
 Dibromofluoromethane
 Concen: 45.682 ug/l
 RT: 5.47 min Scan# 719
 Delta R.T. -0.00 min
 Lab File: VX016337.D
 Acq: 19 May 2020 16:13

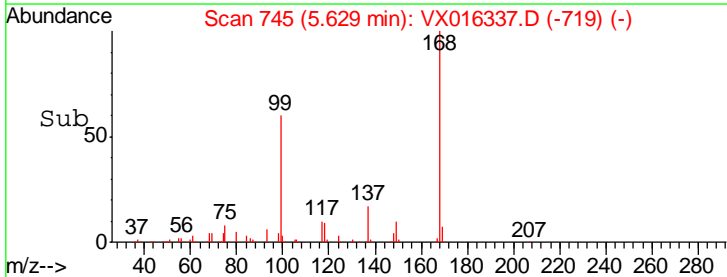
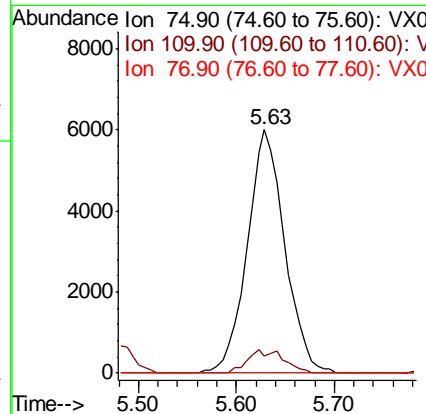
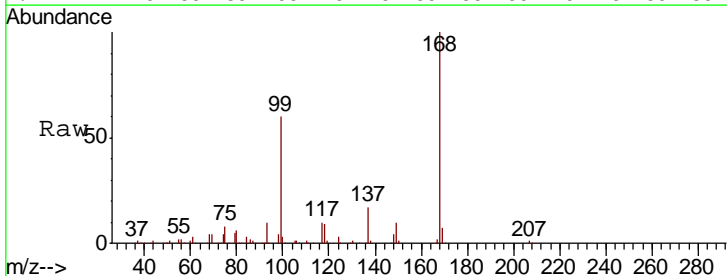
Instrument :
 MSVOA_X
ClientSampled :
 W/P021MW038-200514

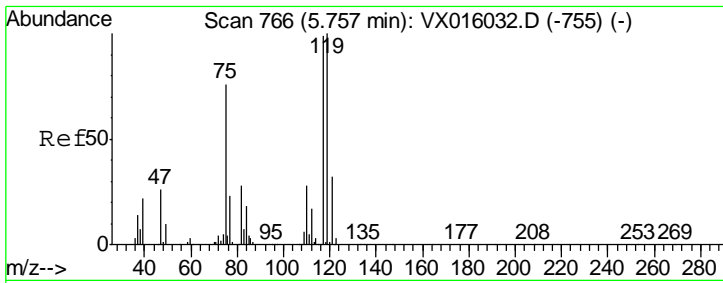
Tgt Ion	Resp	Lower	Upper
113	109250		
111	101.6	81.6	122.4
192	21.2	17.0	25.4



#36
 1,1-Dichloropropene
 Concen: 4.286 ug/l
 RT: 5.63 min Scan# 745
 Delta R.T. -0.14 min
 Lab File: VX016337.D
 Acq: 19 May 2020 16:13

Tgt Ion	Resp	Lower	Upper
75	15927		
110	9.1	18.1	54.1#
77	0.0	25.0	37.6#

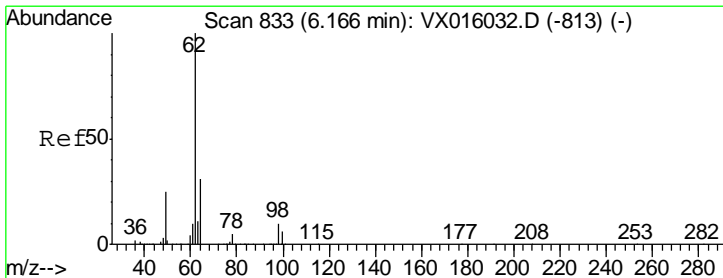
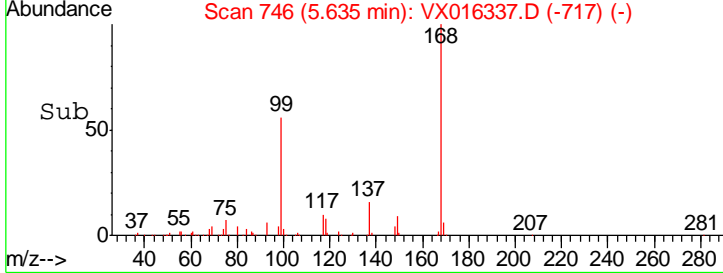
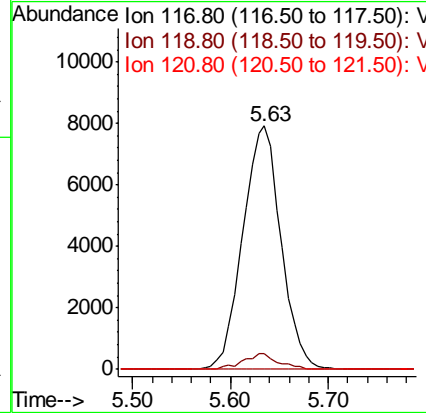
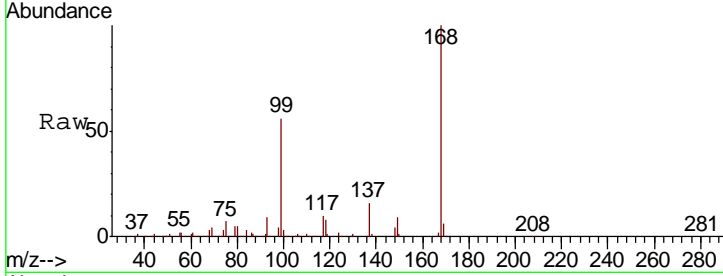




#38
 Carbon Tetrachloride
 Concen: 5.655 ug/l
 RT: 5.63 min Scan# 746
 Delta R.T. -0.12 min
 Lab File: VX016337.D
 Acq: 19 May 2020 16:13

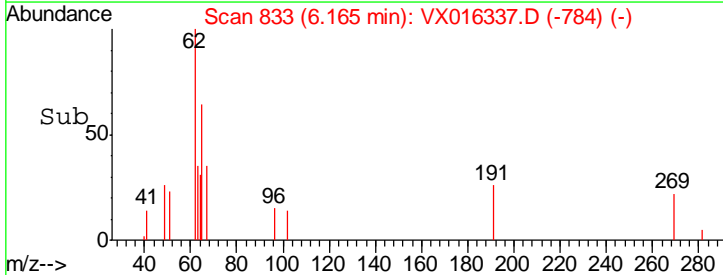
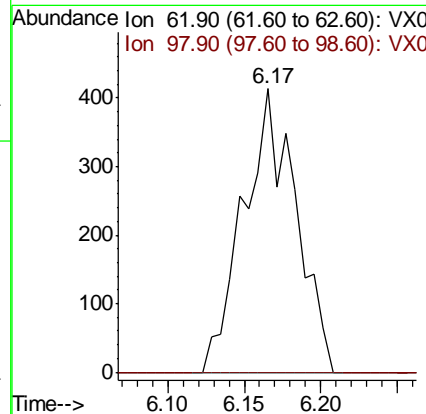
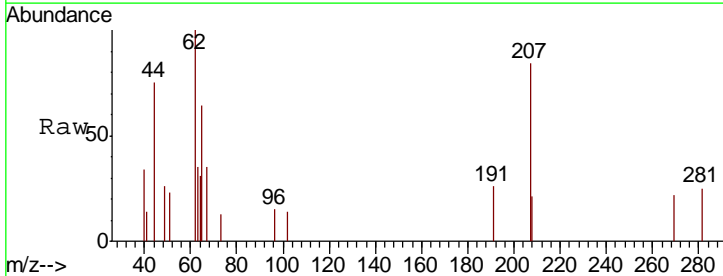
Instrument :
 MSVOA_X
 ClientSampled :
 W/P021MW038-200514

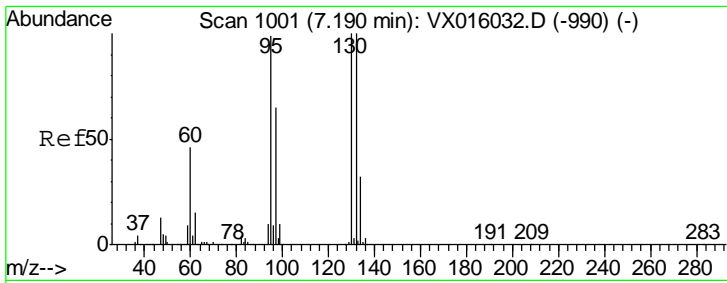
Tgt Ion	Resp	Lower	Upper
117	100		
119	6.4	80.3	120.5#
121	0.0	25.7	38.5#



#42
 1,2-Dichloroethane
 Concen: 0.250 ug/l
 RT: 6.17 min Scan# 833
 Delta R.T. -0.00 min
 Lab File: VX016337.D
 Acq: 19 May 2020 16:13

Tgt Ion	Resp	Lower	Upper
62	100		
98	0.0	0.0	19.4

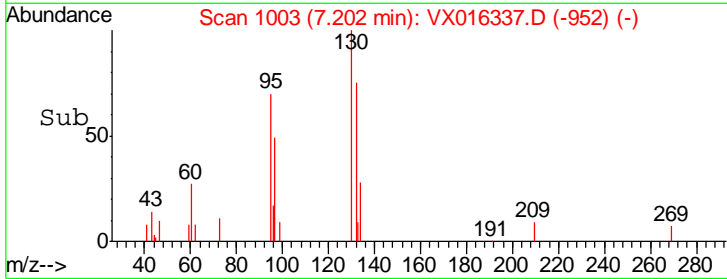
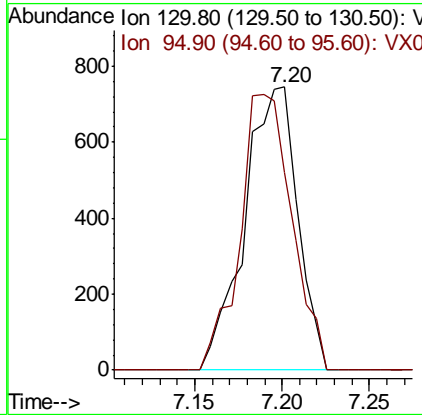
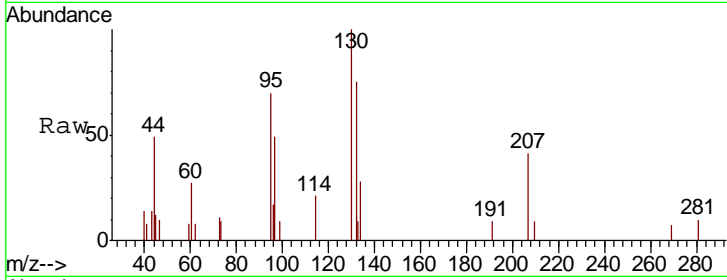




#44
 Trichloroethene
 Concen: 0.406 ug/l
 RT: 7.20 min Scan# 1003
 Delta R.T. 0.01 min
 Lab File: VX016337.D
 Acq: 19 May 2020 16:13

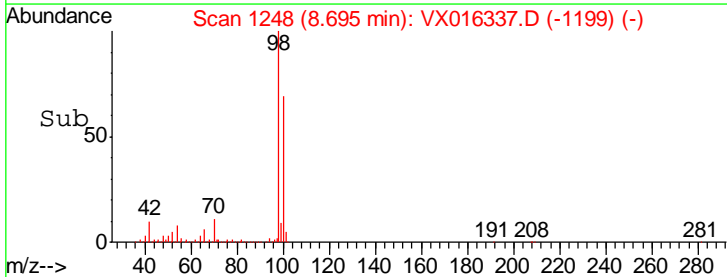
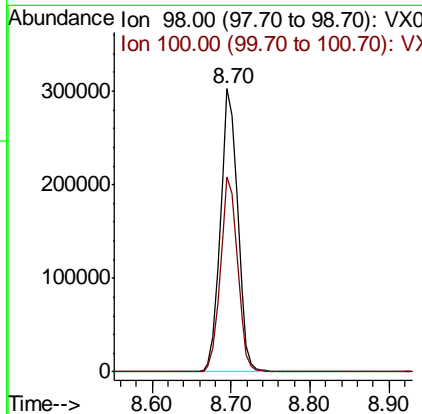
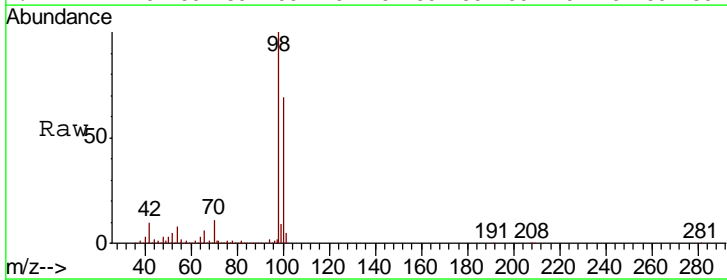
Instrument : MSVOA_X
 ClientSampleId : W/P021MW038-200514

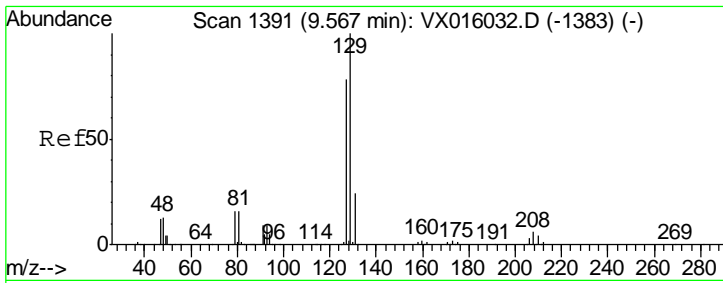
Tgt Ion	Resp	Lower	Upper
130	100		
95	69.8	0.0	197.4



#50
 Toluene-d8
 Concen: 50.532 ug/l
 RT: 8.70 min Scan# 1248
 Delta R.T. -0.00 min
 Lab File: VX016337.D
 Acq: 19 May 2020 16:13

Tgt Ion	Resp	Lower	Upper
98	100		
100	67.9	53.7	80.5

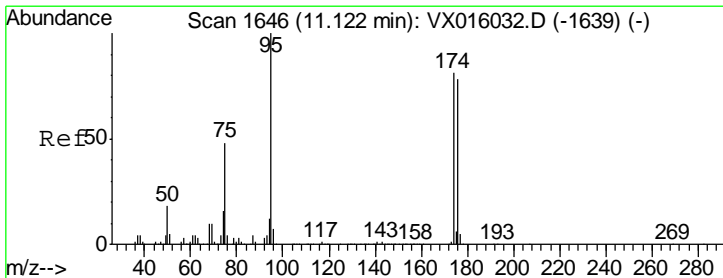
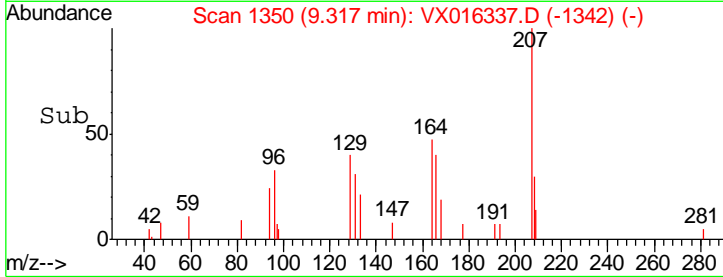
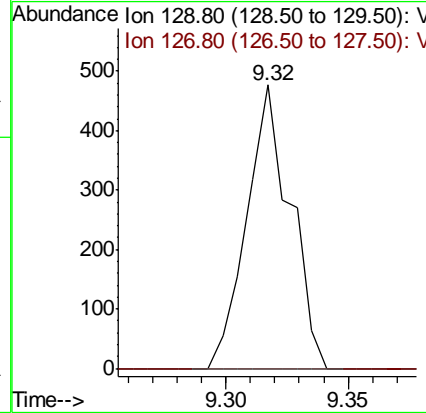
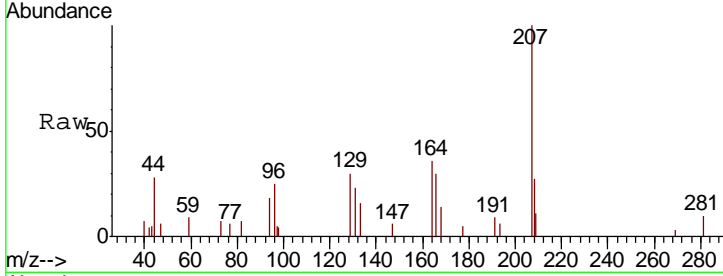




#60
 Dibromochloromethane
 Concen: 0.202 ug/l
 RT: 9.32 min Scan# 1350
 Delta R.T. -0.25 min
 Lab File: VX016337.D
 Acq: 19 May 2020 16:13

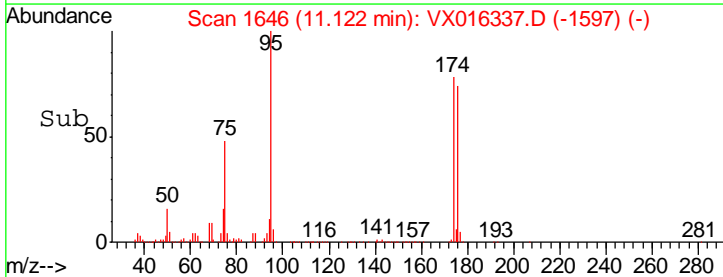
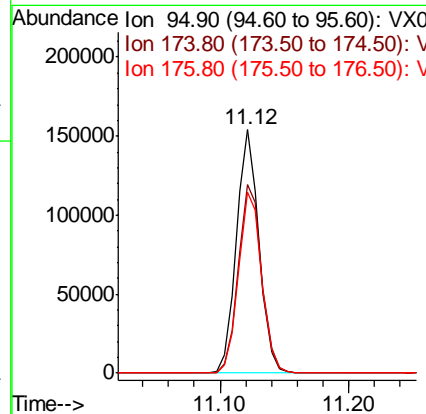
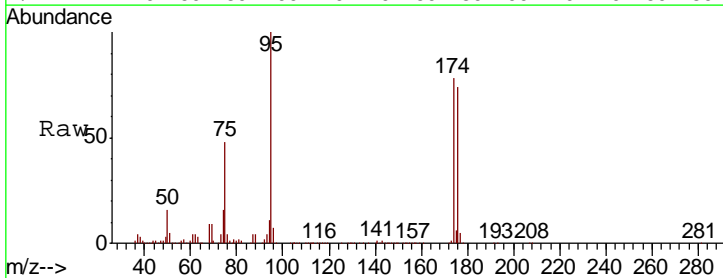
Instrument :
 MSVOA_X
 ClientSampled :
 W/P021MW038-200514

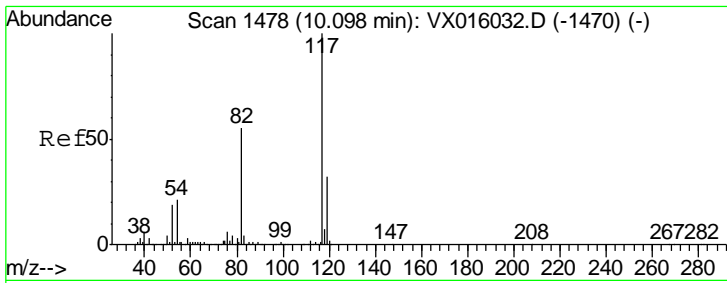
Tgt Ion: 129 Resp: 594
 Ion Ratio Lower Upper
 129 100
 127 0.0 38.4 115.2#



#62
 4-Bromofluorobenzene
 Concen: 53.915 ug/l
 RT: 11.12 min Scan# 1646
 Delta R.T. -0.00 min
 Lab File: VX016337.D
 Acq: 19 May 2020 16:13

Tgt Ion: 95 Resp: 188961
 Ion Ratio Lower Upper
 95 100
 174 79.9 0.0 159.4
 176 76.5 0.0 157.6

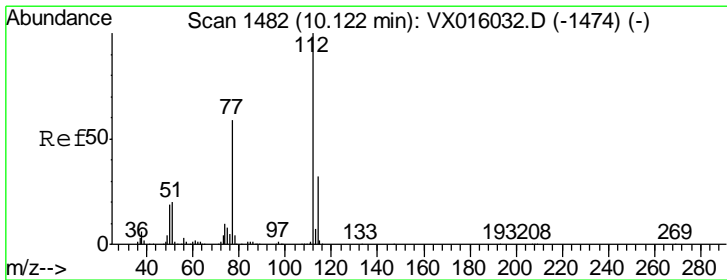
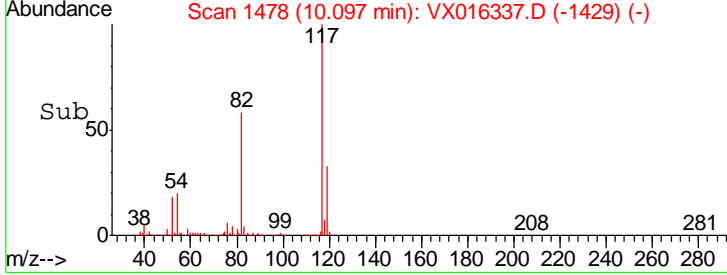
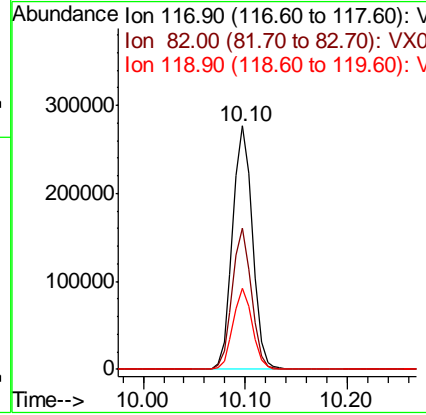
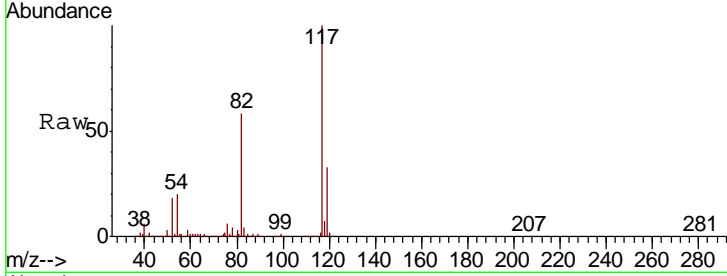




#63
 Chlorobenzene-d5
 Concen: 50.000 ug/l
 RT: 10.10 min Scan# 1478
 Delta R.T. -0.00 min
 Lab File: VX016337.D
 Acq: 19 May 2020 16:13

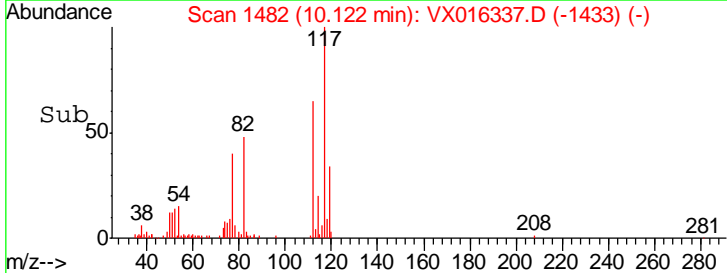
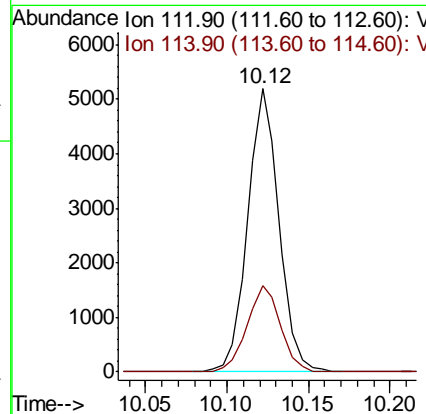
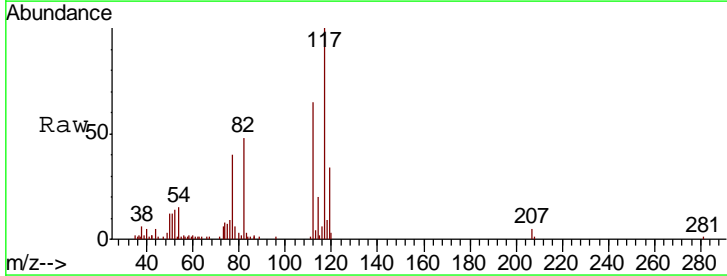
Instrument : MSVOA_X
 ClientSampleId : W/P021MW038-200514

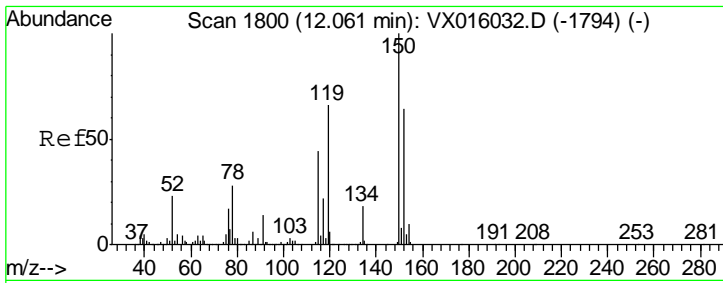
Tgt Ion	Resp	Lower	Upper
117	372275		
82	58.0	44.4	66.6
119	33.3	25.5	38.3



#65
 Chlorobenzene
 Concen: 0.889 ug/l
 RT: 10.12 min Scan# 1482
 Delta R.T. -0.00 min
 Lab File: VX016337.D
 Acq: 19 May 2020 16:13

Tgt Ion	Resp	Lower	Upper
112	6927		
114	30.5	25.7	38.5

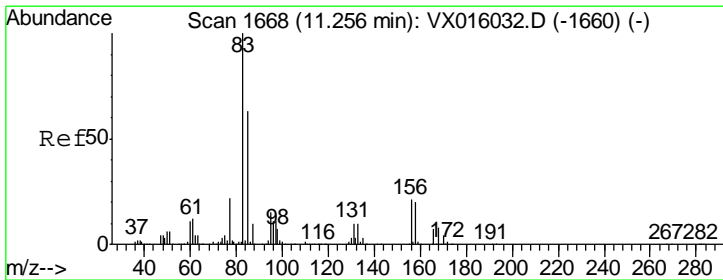
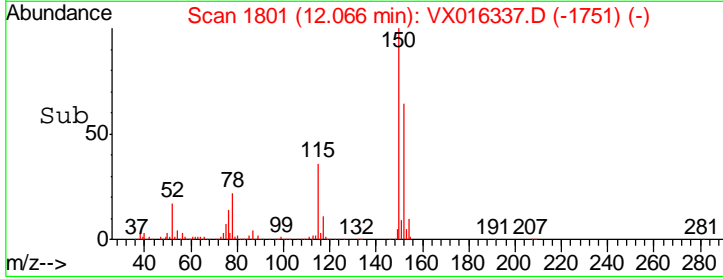
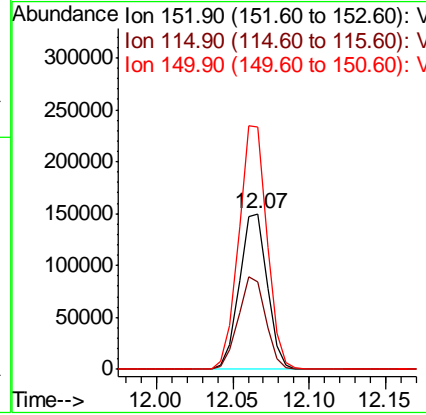
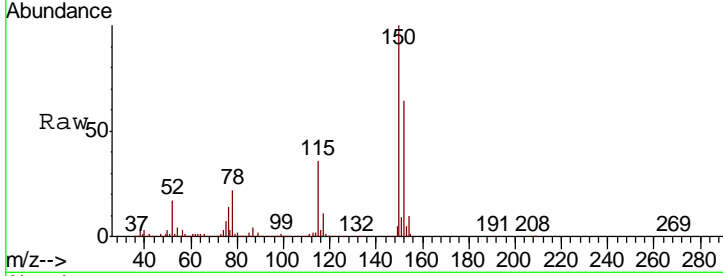




#72
 1,4-Dichlorobenzene-d4
 Concen: 50.000 ug/l
 RT: 12.07 min Scan# 1801
 Delta R.T. 0.01 min
 Lab File: VX016337.D
 Acq: 19 May 2020 16:13

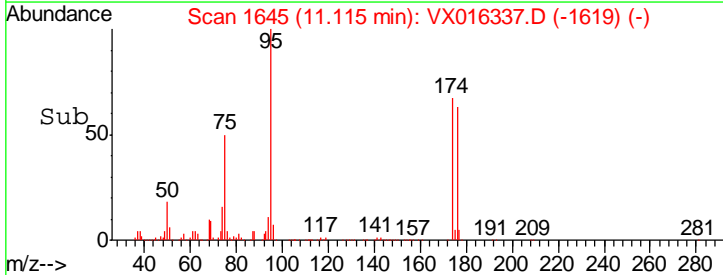
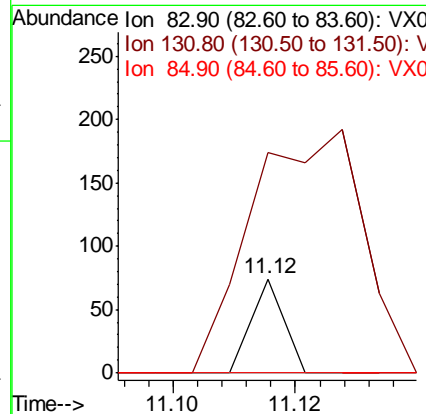
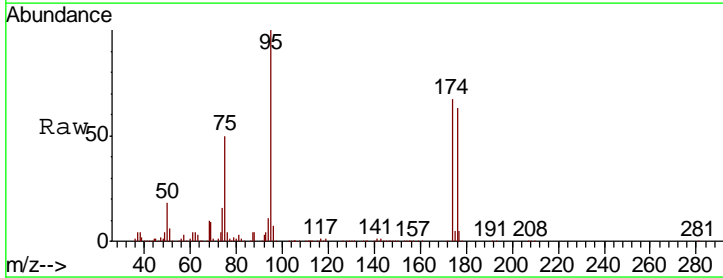
Instrument : MSVOA_X
 ClientSampled : W/P021MW038-200514

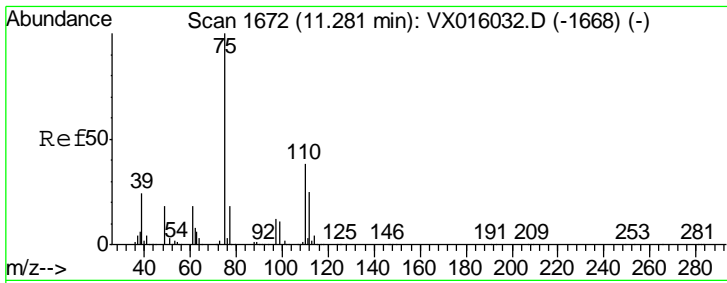
Tgt Ion	Resp	Lower	Upper
152	100		
115	58.6	41.3	124.1
150	158.1	0.0	352.2



#75
 1,1,2,2-Tetrachloroethane
 Concen: 2.059 ug/l
 RT: 11.12 min Scan# 1645
 Delta R.T. -0.14 min
 Lab File: VX016337.D
 Acq: 19 May 2020 16:13

Tgt Ion	Resp	Lower	Upper
83	100		
131	900.0	5.1	15.4#
85	0.0	32.0	96.0#

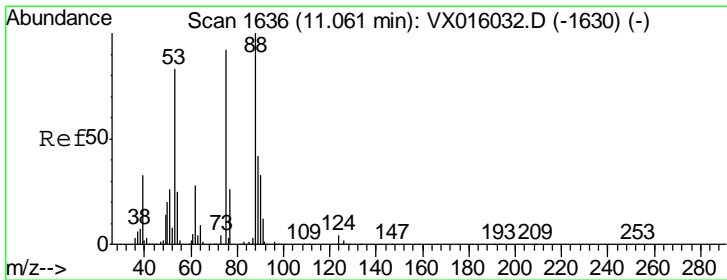
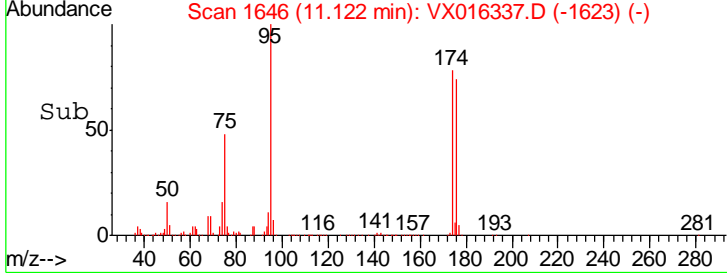
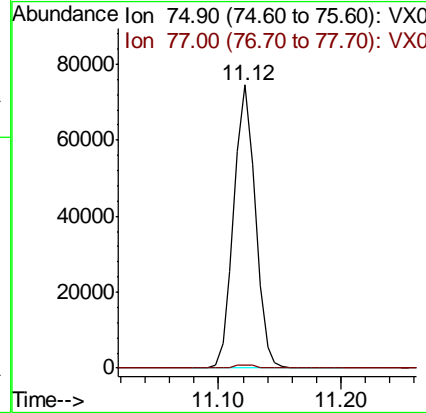
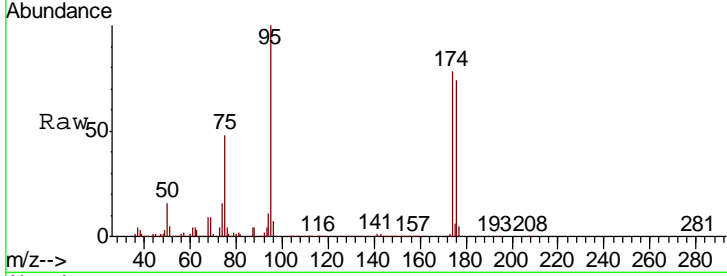




#76
 1,2,3-Trichloropropane
 Concen: 21.111 ug/l
 RT: 11.12 min Scan# 1646
 Delta R.T. -0.16 min
 Lab File: VX016337.D
 Acq: 19 May 2020 16:13

Instrument : MSVOA_X
 ClientSampled : W/P021MW038-200514

Tgt Ion	Resp	Lower	Upper
75	100		
77	1.4	21.2	63.6#



#81
 trans-1,4-Dichloro-2-butene
 Concen: 50.308 ug/l
 RT: 11.12 min Scan# 1646
 Delta R.T. 0.06 min
 Lab File: VX016337.D
 Acq: 19 May 2020 16:13

Tgt Ion	Resp	Lower	Upper
75	100		
53	0.0	73.1	109.7#
89	0.0	36.7	55.1#

