

Data Path : Z:\VOASRV\HPCHEM1\MSVOA X\DATA\VX052019\  
 Data File : VX009735.D  
 Acq On : 20 May 2019 18:47  
 Operator : JC/SP  
 Sample : K2910-07  
 Misc : 5.0mL/MSVOA X/WATER  
 ALS Vial : 22 Sample Multiplier: 1

Instrument :  
 MSVOA\_X  
 ClientSampled :  
 S81-0103

Quant Time: May 21 07:42:47 2019  
 Quant Method : Z:\VOASRV\HPCHEM1\MSVOA\_X\METHOD\82X042919W.M  
 Quant Title : SW846 8260  
 QLast Update : Thu May 09 07:31:15 2019  
 Response via : Initial Calibration

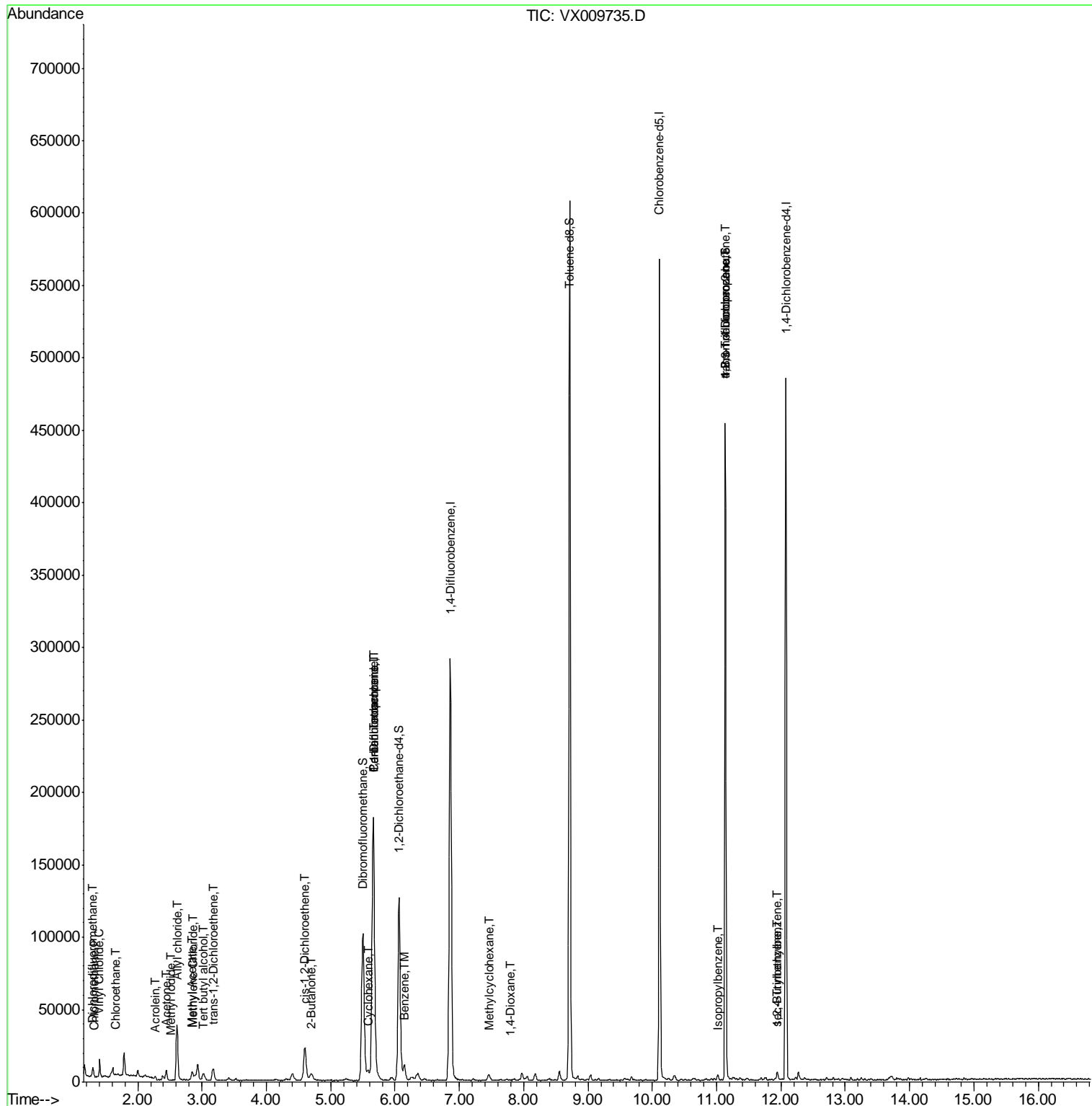
Internal Standards	R.T.	QIon	Response	Conc	Units	Dev(Min)
1) Pentafluorobenzene	5.66	168	177905	50.00	ug/l	0.00
34) 1,4-Difluorobenzene	6.86	114	282328	50.00	ug/l	0.00
63) Chlorobenzene-d5	10.11	117	246788	50.00	ug/l	0.00
72) 1,4-Dichlorobenzene-d4	12.08	152	100905	50.00	ug/l	0.00
System Monitoring Compounds						
33) 1,2-Dichloroethane-d4	6.06	65	118586	48.83	ug/l	0.00
Spiked Amount	50.000		Recovery	=	97.66%	
35) Dibromofluoromethane	5.50	113	86159	48.55	ug/l	0.00
Spiked Amount	50.000		Recovery	=	97.10%	
50) Toluene-d8	8.71	98	354997	49.54	ug/l	0.00
Spiked Amount	50.000		Recovery	=	99.08%	
62) 4-Bromofluorobenzene	11.13	95	115545	44.38	ug/l	0.00
Spiked Amount	50.000		Recovery	=	88.76%	
Target Compounds						
						Qvalue
2) Dichlorodifluoromethane	1.31	85	460	0.281	ug/l	78
3) Chloromethane	1.33	50	586	0.262	ug/l #	61
4) Vinyl Chloride	1.41	62	6395	2.930	ug/l	94
6) Chloroethane	1.65	64	437	0.312	ug/l #	69
10) Methyl Iodide	2.51	142	134	4.657	ug/l #	62
11) Tert butyl alcohol	3.03	59	4051	7.206	ug/l	96
13) Acrolein	2.28	56	117	0.230	ug/l #	1
14) Allyl chloride	2.61	41	3853	0.947	ug/l #	50
16) Acetone	2.45	43	7481	5.737	ug/l	98
18) Methyl Acetate	2.84	43	2829	0.912	ug/l #	56
20) Methylene Chloride	2.86	84	540	0.256	ug/l #	74
21) trans-1,2-Dichloroethene	3.18	96	417	0.230	ug/l #	39
25) 2-Butanone	4.69	43	1360	0.671	ug/l #	71
27) cis-1,2-Dichloroethene	4.60	96	14543	6.730	ug/l	89
28) Bromochloromethane	4.99	49	139	Below Cal	#	20
31) Cyclohexane	5.59	56	4039	1.125	ug/l #	86
36) 1,1-Dichloropropene	5.67	75	13753	5.242	ug/l #	51
38) Carbon Tetrachloride	5.67	117	16178	6.787	ug/l #	16
39) Methylcyclohexane	7.46	83	1412	0.438	ug/l #	84
40) Benzene	6.15	78	11360	1.399	ug/l #	87
49) 1,4-Dioxane	7.79	88	19	0.323	ug/l #	1
73) Isopropylbenzene	11.02	105	1844	0.251	ug/l	88
76) 1,2,3-Trichloropropane	11.13	75	58761	25.105	ug/l #	34
81) trans-1,4-Dichloro-2-buten	11.13	75	58761	64.234	ug/l #	10
84) 1,2,4-Trimethylbenzene	11.94	105	2480	0.400	ug/l #	32
85) sec-Butylbenzene	11.94	105	2480	0.348	ug/l	83

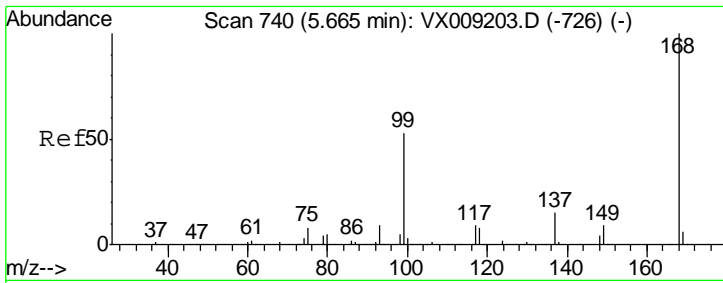
(#) = qualifier out of range (m) = manual integration (+) = signals summed

Data Path : Z:\VOASRV\HPCHEM1\MSVOA X\DATA\VX052019\  
 Data File : VX009735.D  
 Acq On : 20 May 2019 18:47  
 Operator : JC/SP  
 Sample : K2910-07  
 Misc : 5.0mL/MSVOA X/WATER  
 ALS Vial : 22 Sample Multiplier: 1

Instrument :  
 MSVOA\_X  
 Client Sampled :  
 S81-0103

Quant Time: May 21 07:42:47 2019  
 Quant Method : Z:\VOASRV\HPCHEM1\MSVOA\_X\METHOD\82X042919W.M  
 Quant Title : SW846 8260  
 QLast Update : Thu May 09 07:31:15 2019  
 Response via : Initial Calibration



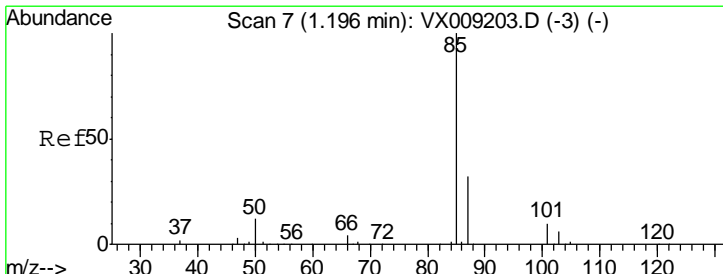
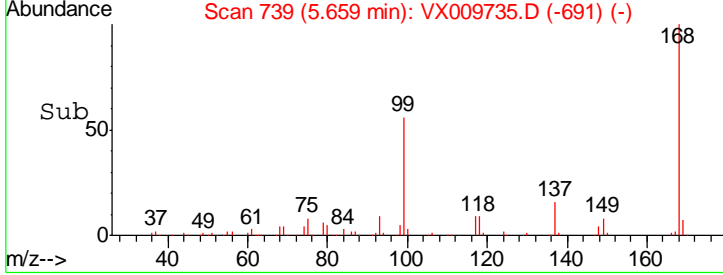
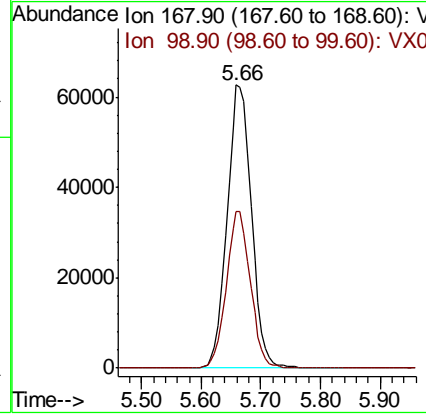
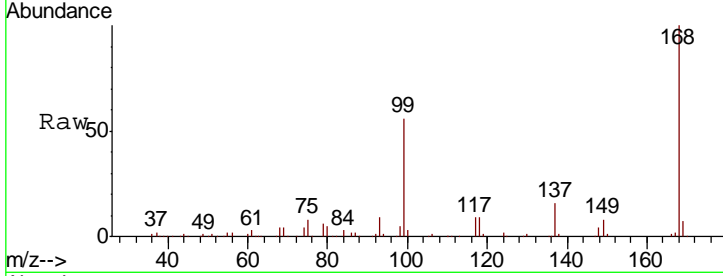


#1  
 Pentafluorobenzene  
 Concen: 50.000 ug/l  
 RT: 5.66 min Scan# 739  
 Delta R.T. -0.01 min  
 Lab File: VX009735.D  
 Acq: 20 May 2019 18:47

Instrument :  
 MSVOA\_X  
 ClientSampled :  
 S81-0103

Tot Ion: 168 Resp: 177905

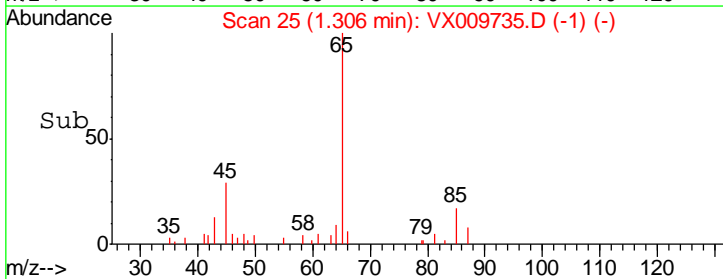
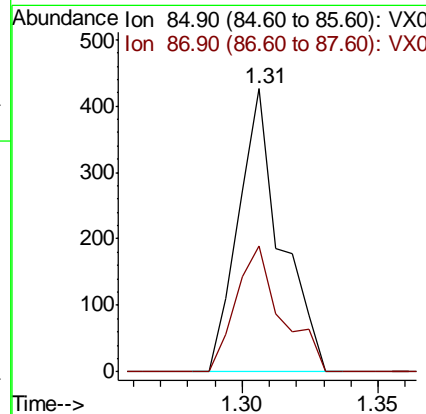
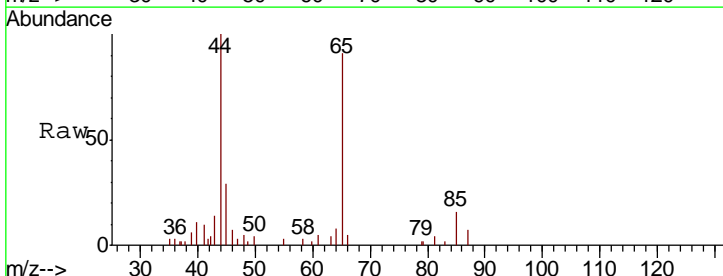
Ion	Ratio	Lower	Upper
168	100		
99	55.5	42.3	63.5

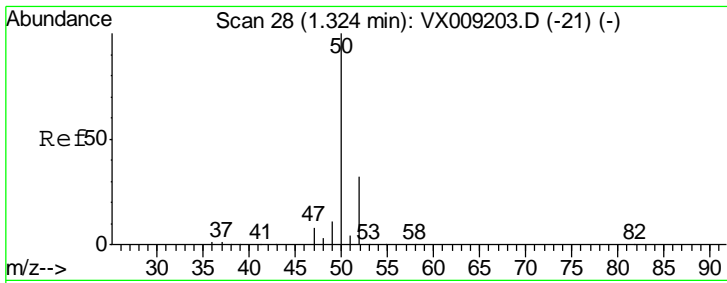


#2  
 Dichlorodifluoromethane  
 Concen: 0.281 ug/l  
 RT: 1.31 min Scan# 25  
 Delta R.T. 0.11 min  
 Lab File: VX009735.D  
 Acq: 20 May 2019 18:47

Tgt Ion: 85 Resp: 460

Ion	Ratio	Lower	Upper
85	100		
87	44.6	16.1	48.3

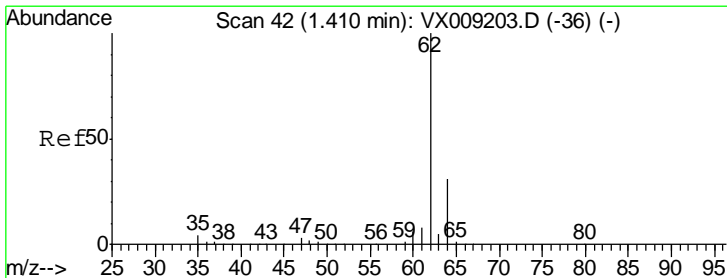
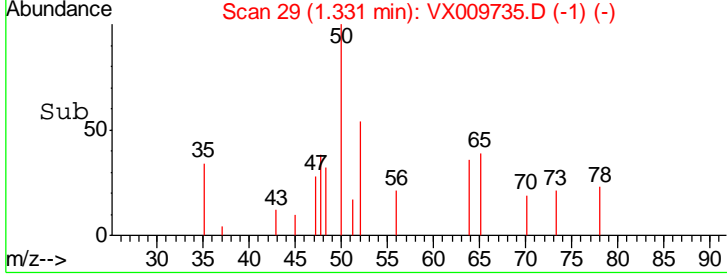
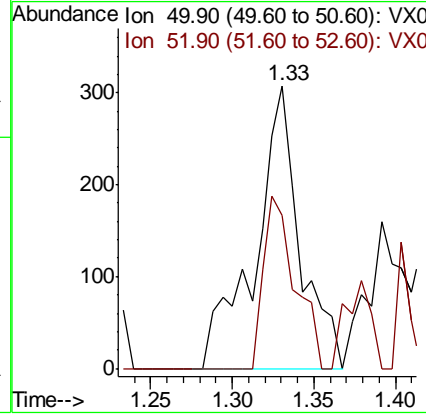
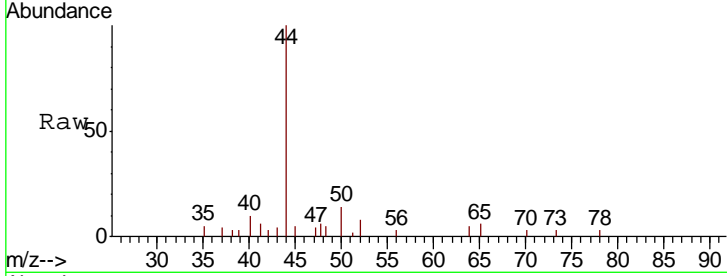




#3  
 Chloromethane  
 Concen: 0.262 ug/l  
 RT: 1.33 min Scan# 29  
 Delta R.T. 0.01 min  
 Lab File: VX009735.D  
 Acq: 20 May 2019 18:47

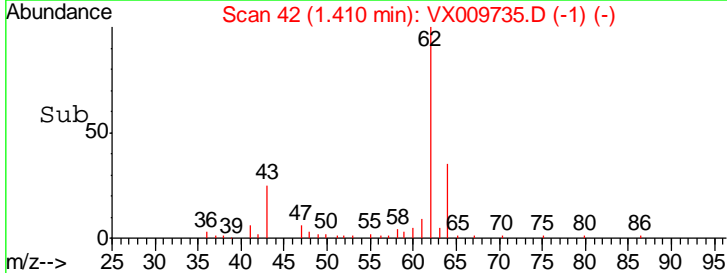
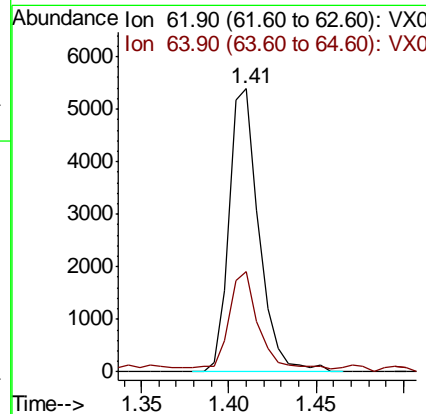
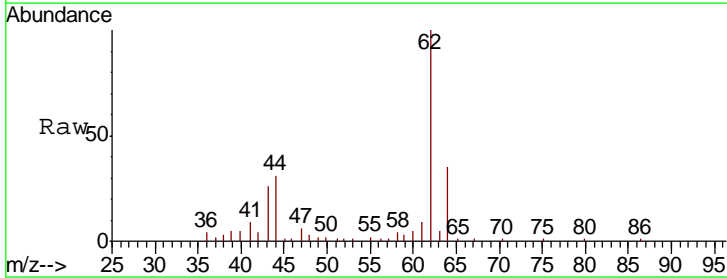
Instrument :  
 MSVOA\_X  
 ClientSampled :  
 S81-0103

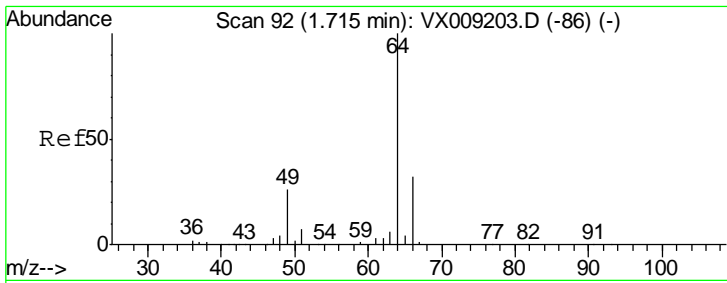
Tgt Ion: 50 Resp: 586  
 Ion Ratio Lower Upper  
 50 100  
 52 54.2 25.9 38.9#



#4  
 Vinyl Chloride  
 Concen: 2.930 ug/l  
 RT: 1.41 min Scan# 42  
 Delta R.T. 0.00 min  
 Lab File: VX009735.D  
 Acq: 20 May 2019 18:47

Tgt Ion: 62 Resp: 6395  
 Ion Ratio Lower Upper  
 62 100  
 64 34.1 24.6 36.8



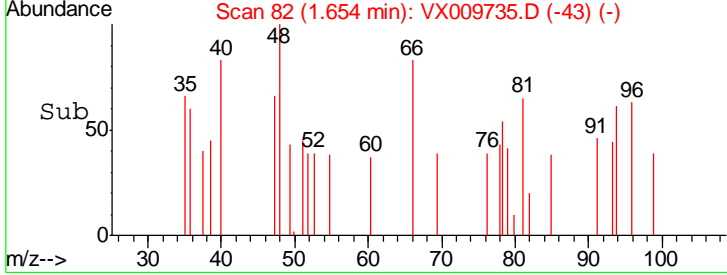
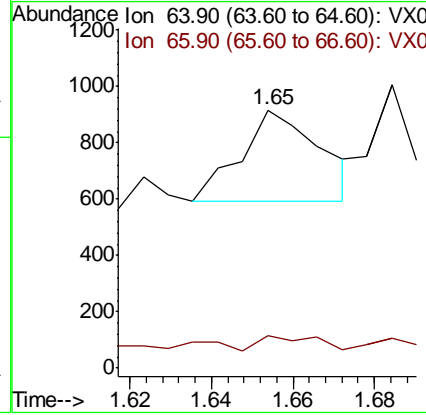
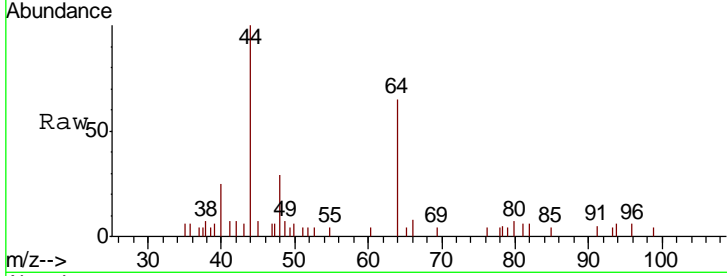


#6  
 Chloroethane  
 Concen: 0.312 ug/l  
 RT: 1.65 min Scan# 82  
 Delta R.T. -0.06 min  
 Lab File: VX009735.D  
 Acq: 20 May 2019 18:47

**Instrument :**  
 MSVOA\_X  
**ClientSampled :**  
 S81-0103

Tgt Ion: 64 Resp: 437

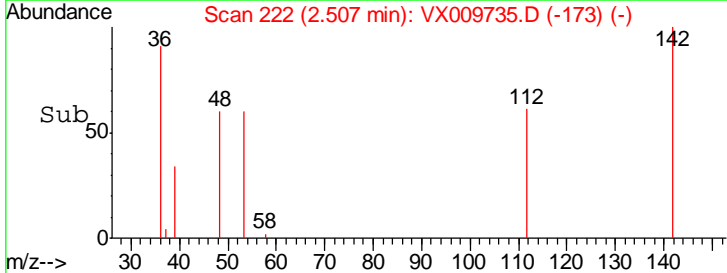
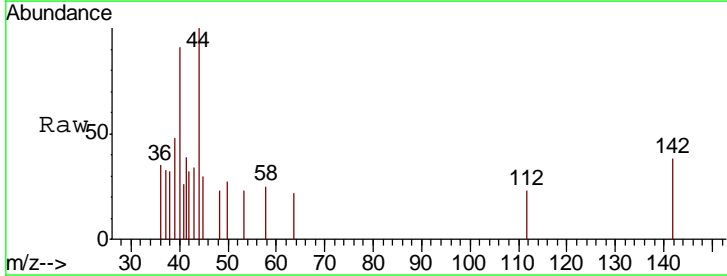
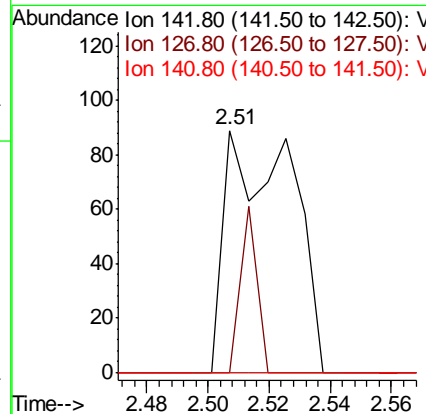
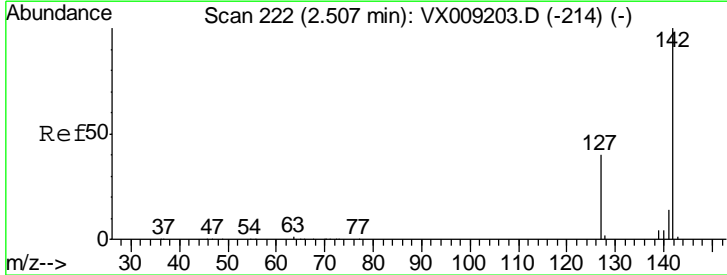
Ion	Ratio	Lower	Upper
64	100		
66	14.6	25.3	37.9#

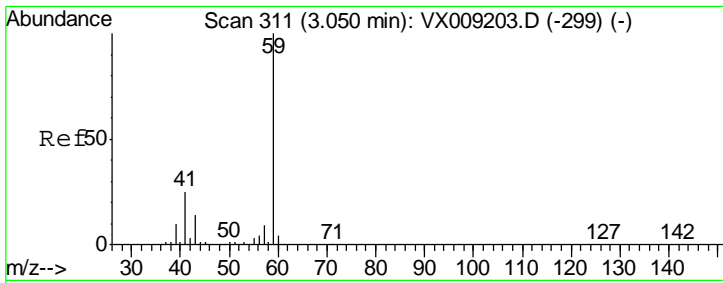


#10  
 Methyl Iodide  
 Concen: 4.657 ug/l  
 RT: 2.51 min Scan# 222  
 Delta R.T. 0.00 min  
 Lab File: VX009735.D  
 Acq: 20 May 2019 18:47

Tgt Ion: 142 Resp: 134

Ion	Ratio	Lower	Upper
142	100		
127	16.4	32.7	49.1#
141	0.0	11.5	17.3#

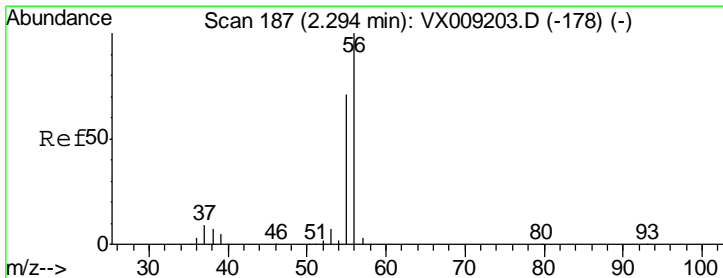
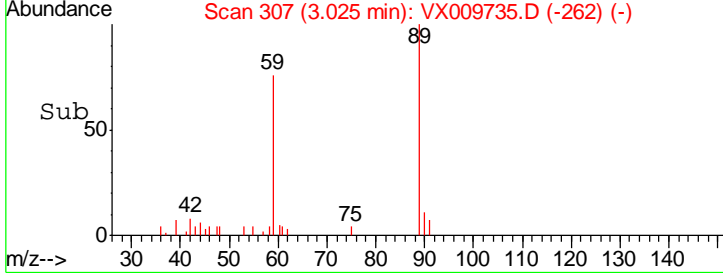
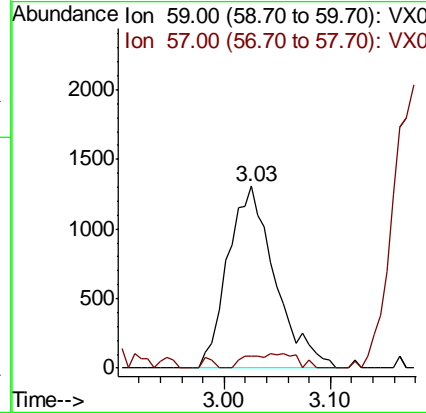
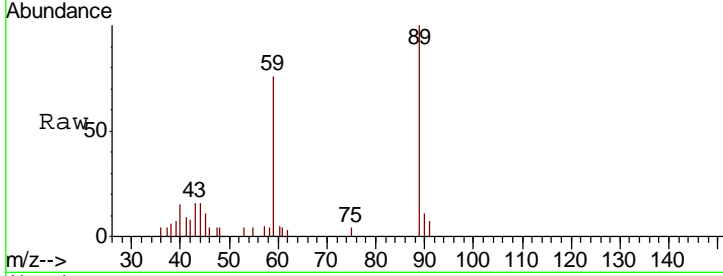




#11  
 Tert butyl alcohol  
 Concen: 7.206 ug/l  
 RT: 3.03 min Scan# 307  
 Delta R.T. -0.02 min  
 Lab File: VX009735.D  
 Acq: 20 May 2019 18:47

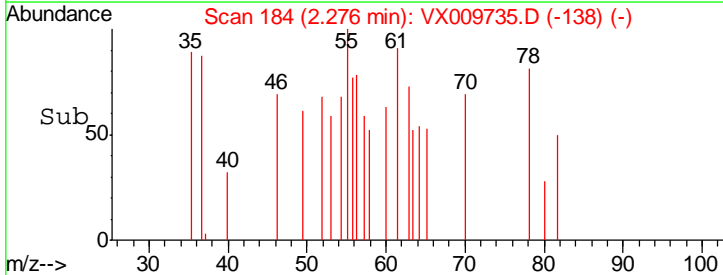
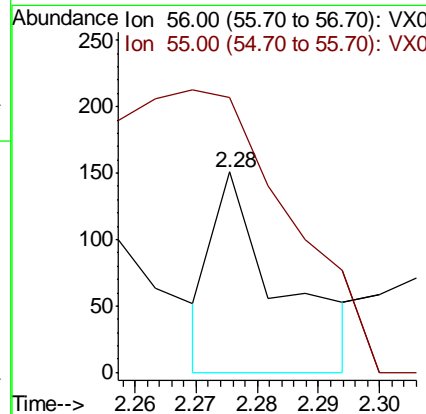
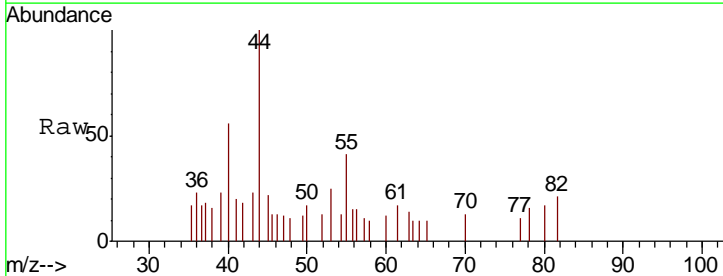
Instrument :  
 MSVOA\_X  
 ClientSampled :  
 S81-0103

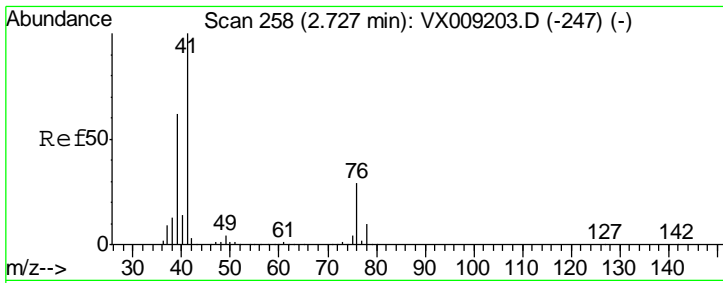
Tgt Ion	Resp	Lower	Upper
59	100		
57	8.6	8.2	12.2



#13  
 Acrolein  
 Concen: 0.230 ug/l  
 RT: 2.28 min Scan# 184  
 Delta R.T. -0.02 min  
 Lab File: VX009735.D  
 Acq: 20 May 2019 18:47

Tgt Ion	Resp	Lower	Upper
56	100		
55	414.5	56.6	85.0#

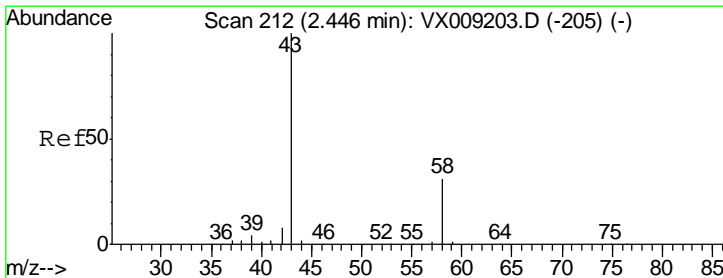
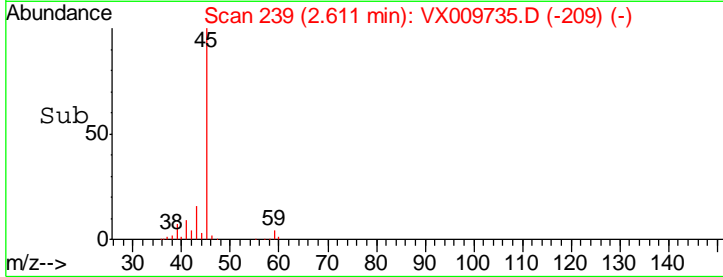
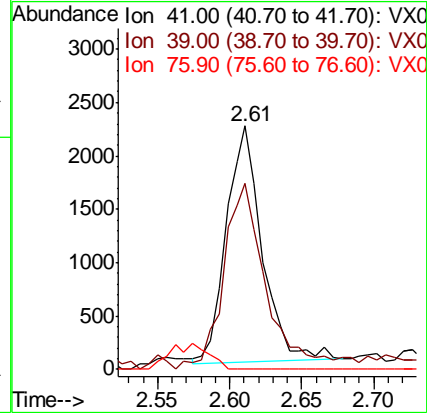
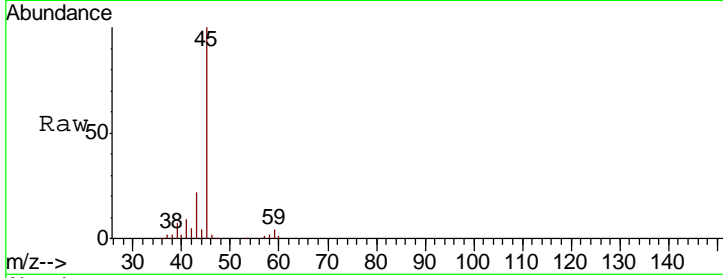




#14  
 Allyl chloride  
 Concen: 0.947 ug/l  
 RT: 2.61 min Scan# 239  
 Delta R.T. -0.12 min  
 Lab File: VX009735.D  
 Acq: 20 May 2019 18:47

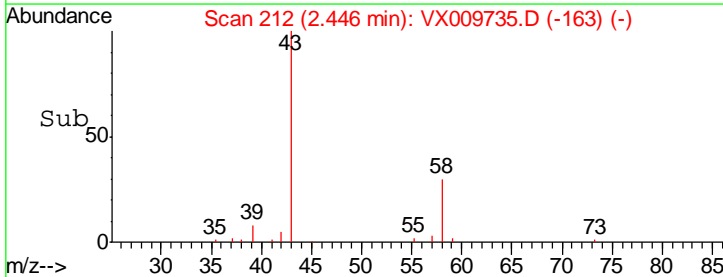
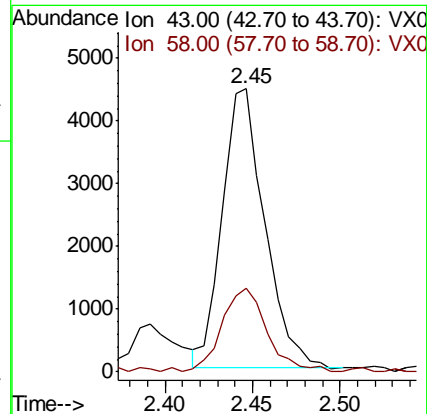
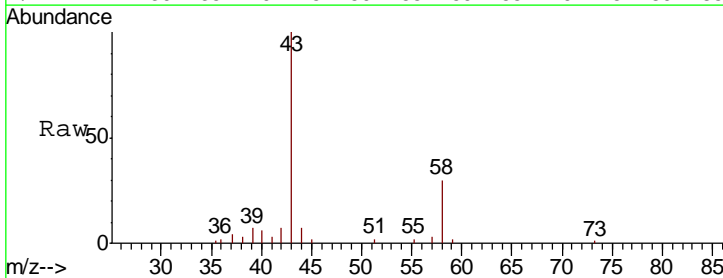
Instrument :  
 MSVOA\_X  
 ClientSampleID :  
 S81-0103

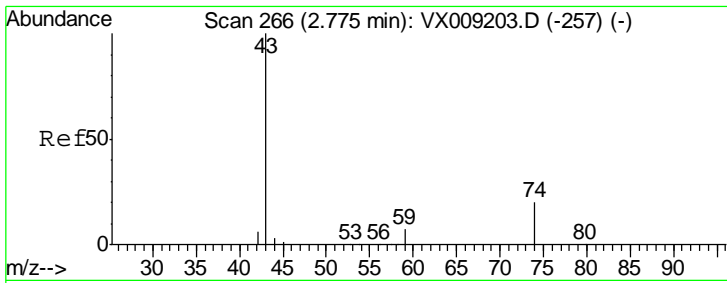
Tgt Ion	Resp	Lower	Upper
41	100		
39	95.2	46.7	70.1#
76	0.0	21.8	32.8#



#16  
 Acetone  
 Concen: 5.737 ug/l  
 RT: 2.45 min Scan# 212  
 Delta R.T. 0.00 min  
 Lab File: VX009735.D  
 Acq: 20 May 2019 18:47

Tgt Ion	Resp	Lower	Upper
43	100		
58	30.2	24.9	37.3

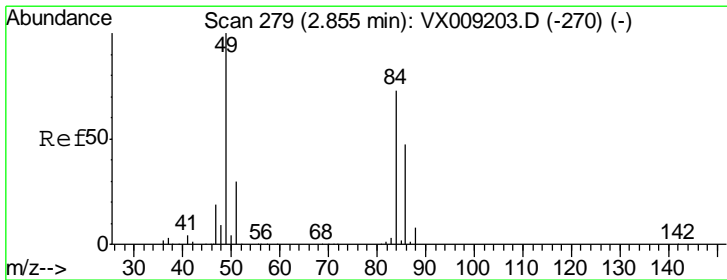
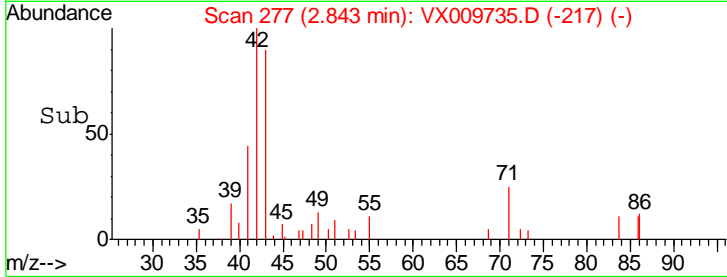
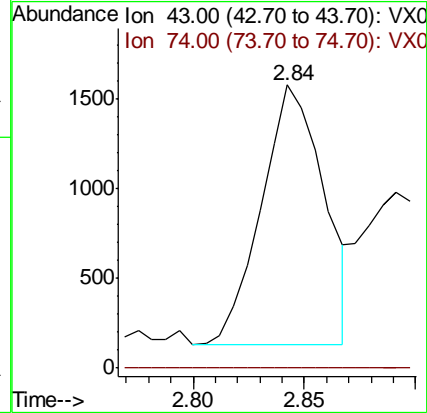
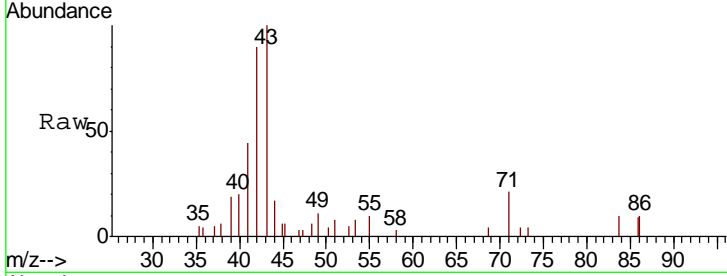




#18  
Methyl Acetate  
Concen: 0.912 ug/l  
RT: 2.84 min Scan# 277  
Delta R.T. 0.07 min  
Lab File: VX009735.D  
Acq: 20 May 2019 18:47

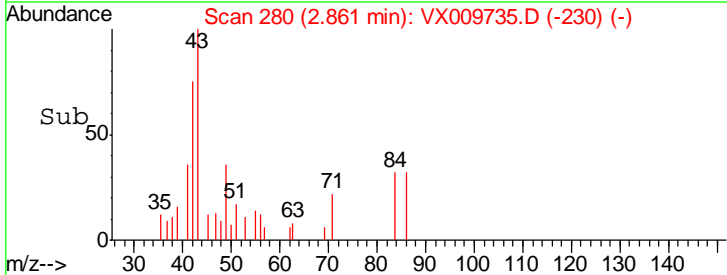
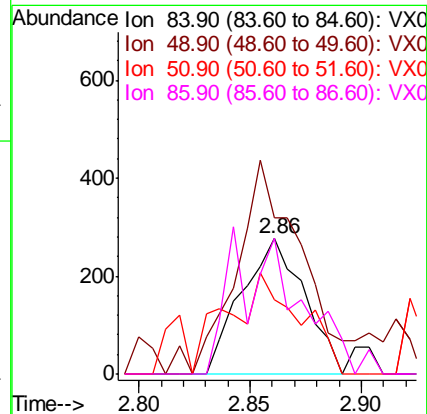
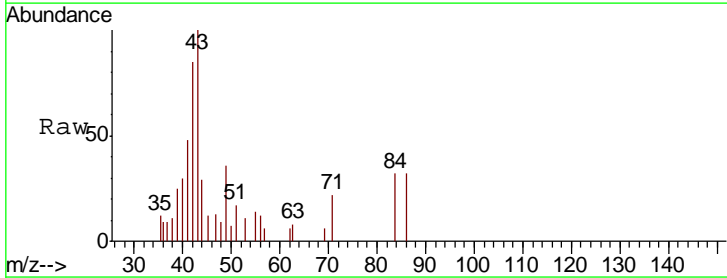
Instrument :  
MSVOA\_X  
ClientSampled :  
S81-0103

Tgt Ion	Resp	Lower	Upper
43	100		
74	0.0	16.2	24.4#

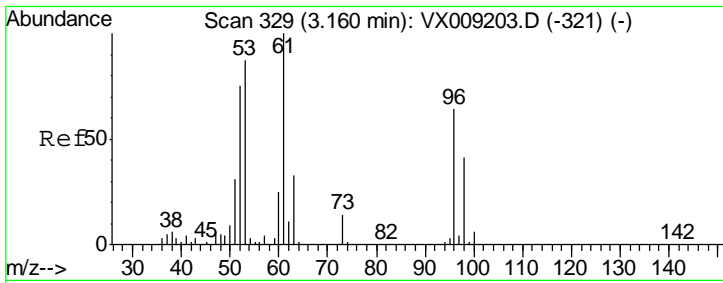


#20  
Methylene Chloride  
Concen: 0.256 ug/l  
RT: 2.86 min Scan# 280  
Delta R.T. 0.01 min  
Lab File: VX009735.D  
Acq: 20 May 2019 18:47

Tgt Ion	Resp	Lower	Upper
84	100		
49	114.8	109.9	164.9
51	54.9	32.7	49.1#
86	99.6	52.0	78.0#



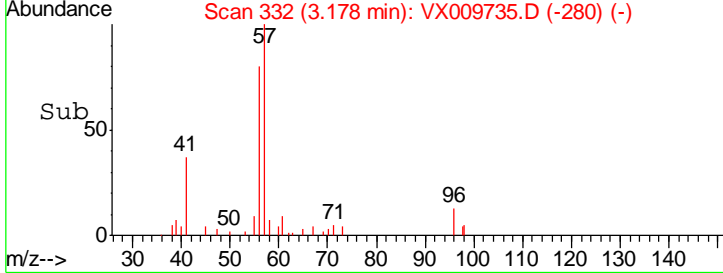
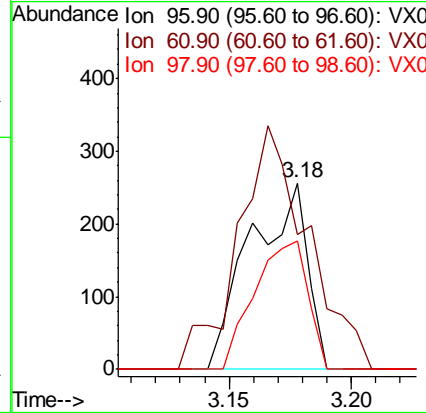
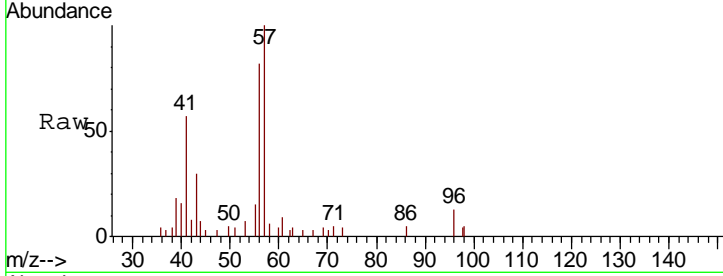




#21  
 trans-1,2-Dichloroethene  
 Concen: 0.230 ug/l  
 RT: 3.18 min Scan# 332  
 Delta R.T. 0.02 min  
 Lab File: VX009735.D  
 Acq: 20 May 2019 18:47

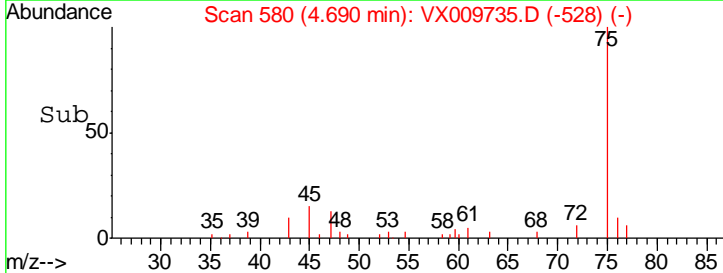
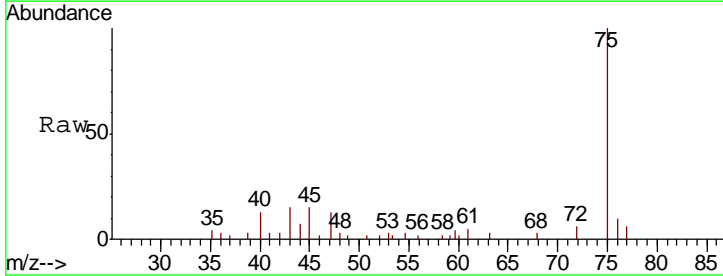
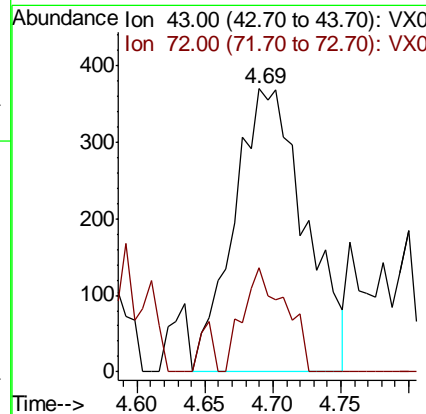
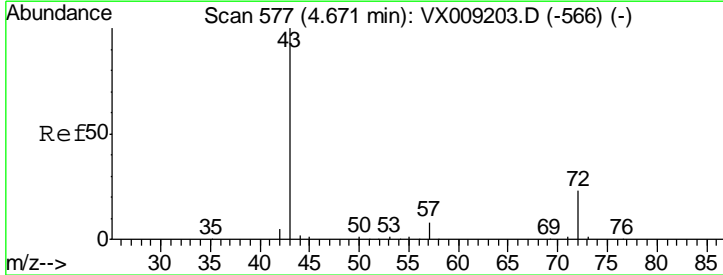
**Instrument :**  
 MSVOA\_X  
**ClientSampled :**  
 S81-0103

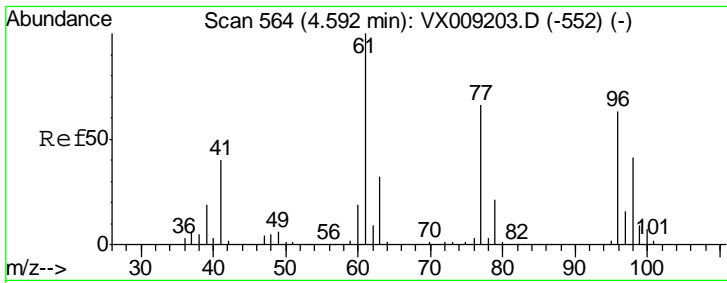
Tgt Ion	Resp	Lower	Upper
96	417		
61	48.8	124.5	186.7#
98	68.8	50.4	75.6



#25  
 2-Butanone  
 Concen: 0.671 ug/l  
 RT: 4.69 min Scan# 580  
 Delta R.T. 0.02 min  
 Lab File: VX009735.D  
 Acq: 20 May 2019 18:47

Tgt Ion	Resp	Lower	Upper
43	1360		
72	36.9	18.2	27.2#



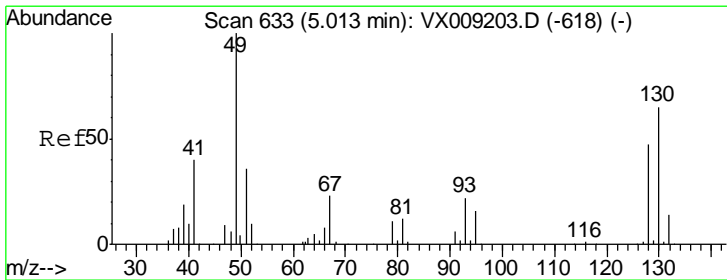
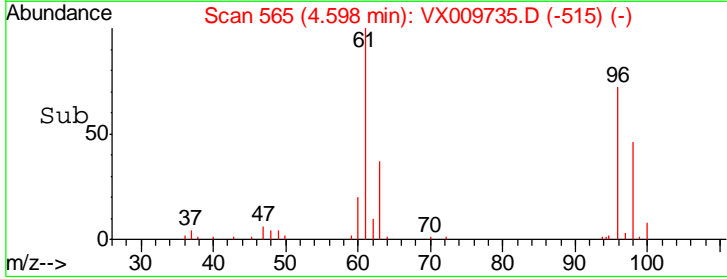
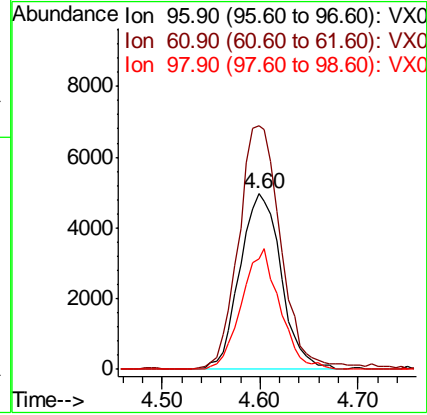
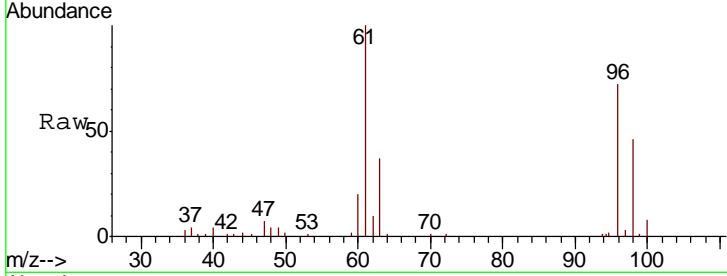


#27  
 cis-1,2-Dichloroethene  
 Concen: 6.730 ug/l  
 RT: 4.60 min Scan# 565  
 Delta R.T. 0.01 min  
 Lab File: VX009735.D  
 Acq: 20 May 2019 18:47

Instrument :  
 MSVOA\_X  
 ClientSampled :  
 S81-0103

Tgt Ion: 96 Resp: 14543

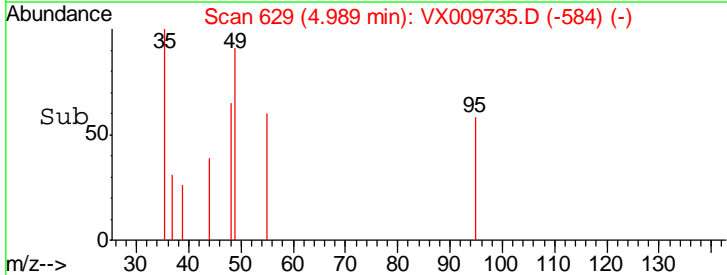
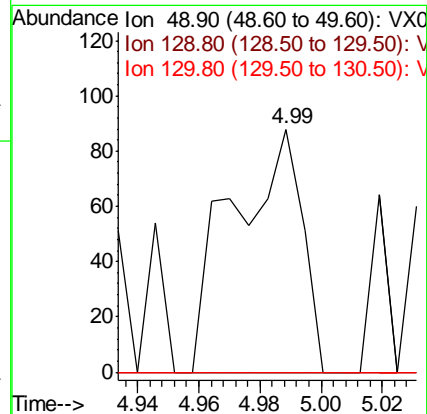
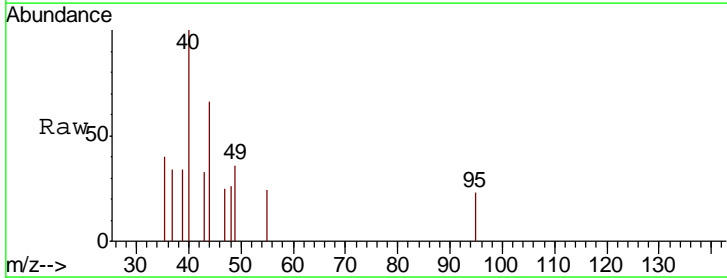
Ion	Ratio	Lower	Upper
96	100		
61	142.1	0.0	324.0
98	63.3	0.0	130.4

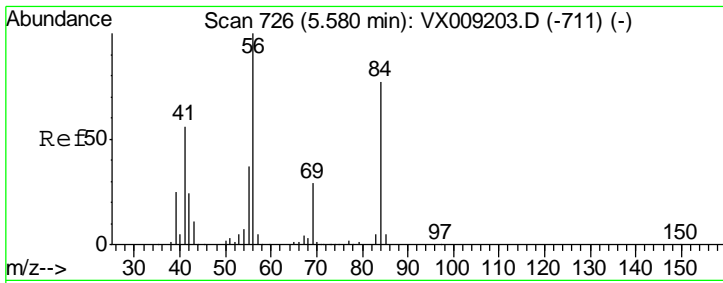


#28  
 Bromochloromethane  
 Concen: Below Cal  
 RT: 4.99 min Scan# 629  
 Delta R.T. -0.02 min  
 Lab File: VX009735.D  
 Acq: 20 May 2019 18:47

Tgt Ion: 49 Resp: 139

Ion	Ratio	Lower	Upper
49	100		
129	0.0	0.0	3.8
130	0.0	51.2	76.8#

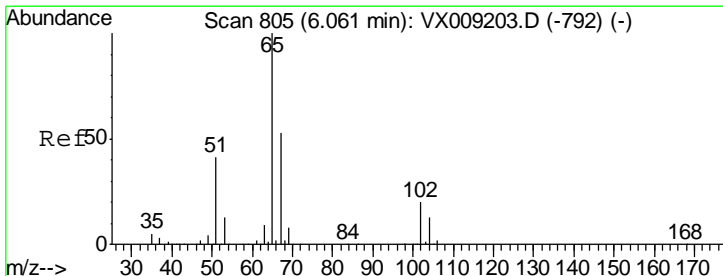
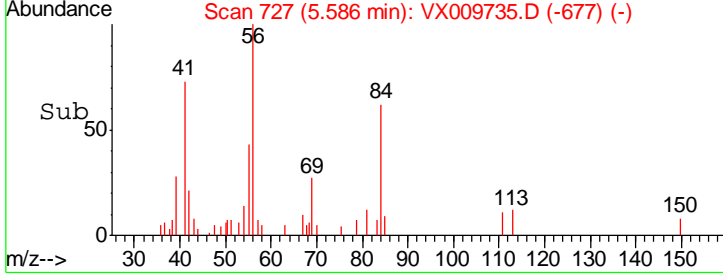
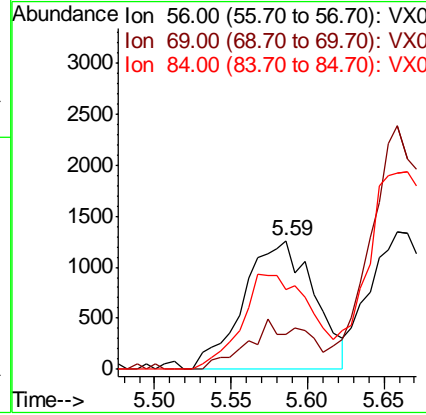
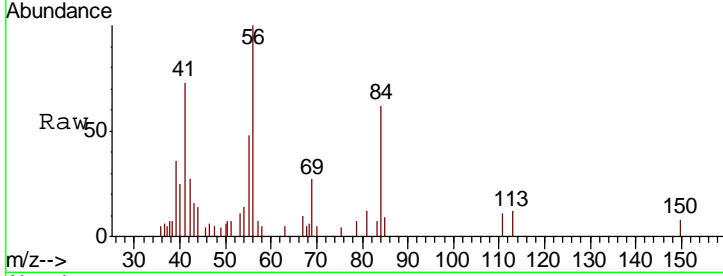




#31  
 Cyclohexane  
 Concen: 1.125 ug/l  
 RT: 5.59 min Scan# 727  
 Delta R.T. 0.01 min  
 Lab File: VX009735.D  
 Acq: 20 May 2019 18:47

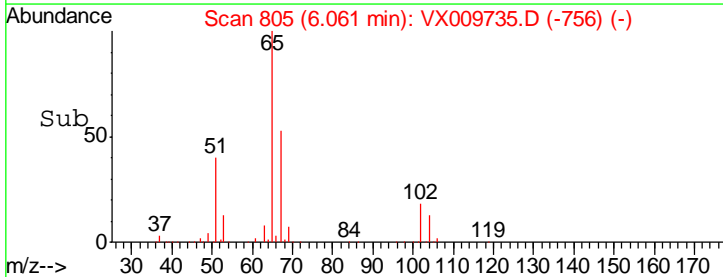
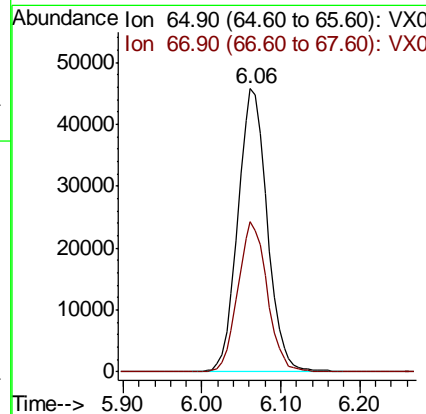
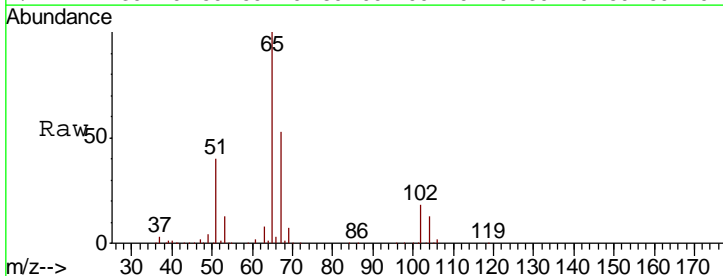
Instrument :  
 MSVOA\_X  
 ClientSampled :  
 S81-0103

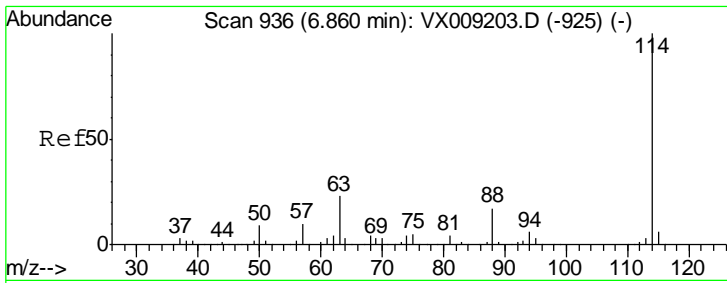
Tgt Ion	Resp	Lower	Upper
56	100		
69	27.1	23.4	35.0
84	61.9	61.9	92.9#



#33  
 1,2-Dichloroethane-d4  
 Concen: 48.829 ug/l  
 RT: 6.06 min Scan# 805  
 Delta R.T. 0.00 min  
 Lab File: VX009735.D  
 Acq: 20 May 2019 18:47

Tgt Ion	Resp	Lower	Upper
65	100		
67	53.1	0.0	106.6

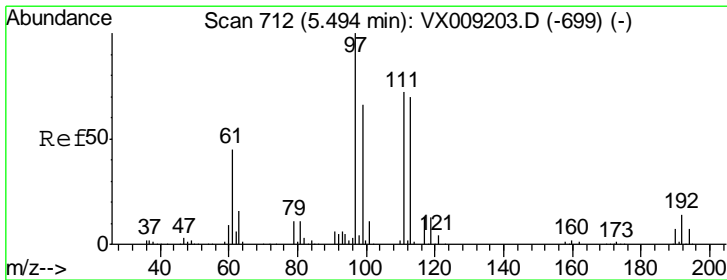
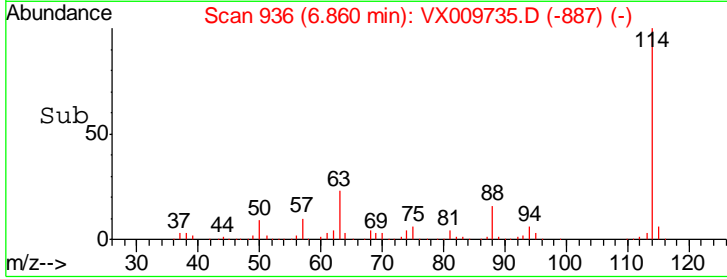
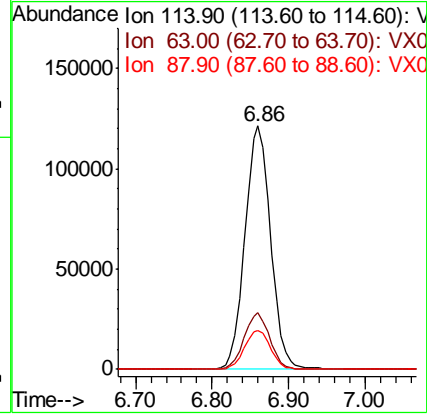
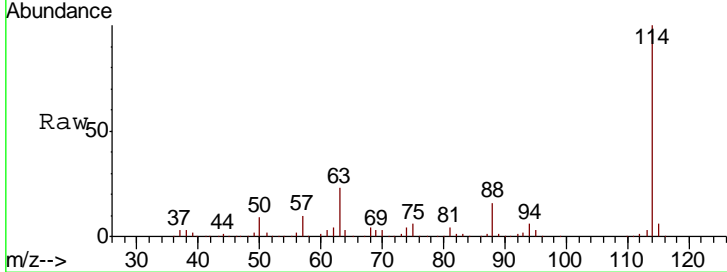




#34  
 1,4-Difluorobenzene  
 Concen: 50.000 ug/l  
 RT: 6.86 min Scan# 936  
 Delta R.T. 0.00 min  
 Lab File: VX009735.D  
 Acq: 20 May 2019 18:47

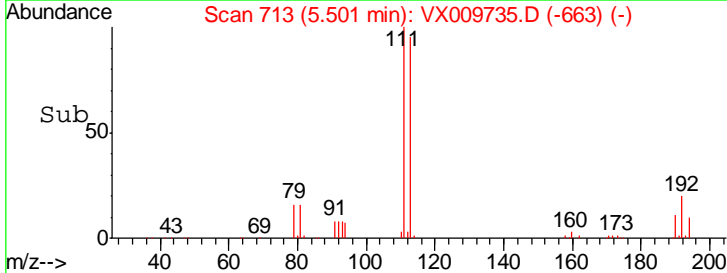
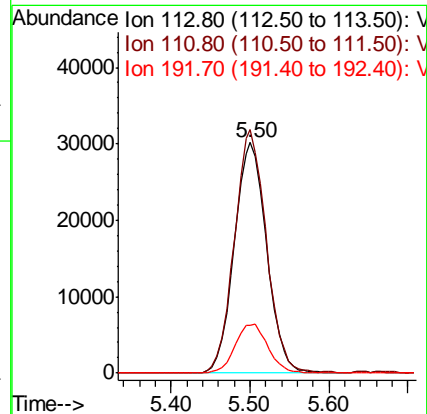
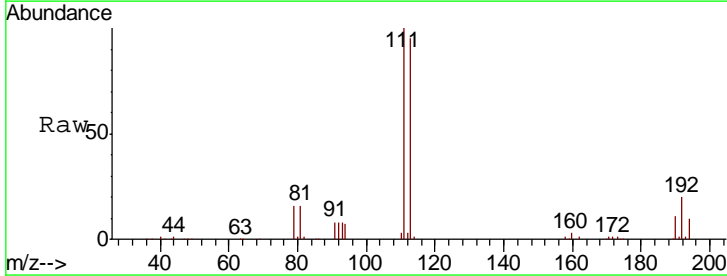
Instrument :  
 MSVOA\_X  
 ClientSampled :  
 S81-0103

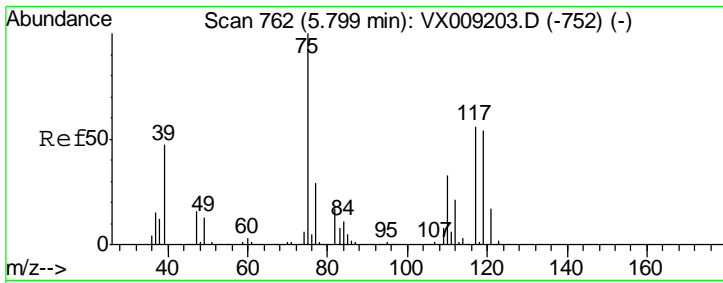
Tgt Ion	Resp	Lower	Upper
114	282328		
63	23.4	0.0	45.6
88	16.1	0.0	33.2



#35  
 Dibromofluoromethane  
 Concen: 48.545 ug/l  
 RT: 5.50 min Scan# 713  
 Delta R.T. 0.01 min  
 Lab File: VX009735.D  
 Acq: 20 May 2019 18:47

Tgt Ion	Resp	Lower	Upper
113	86159		
111	104.1	82.8	124.2
192	21.5	17.0	25.6

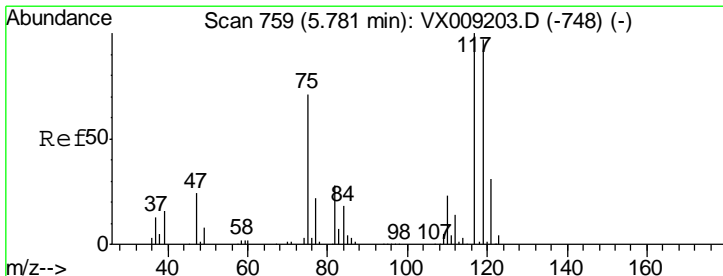
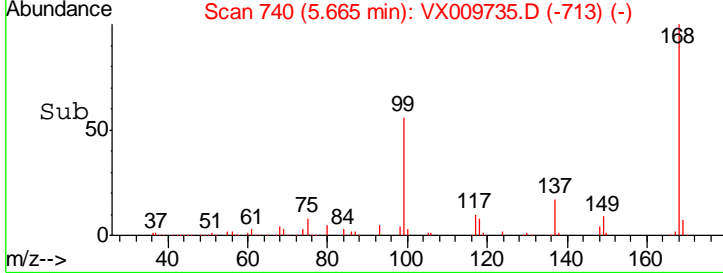
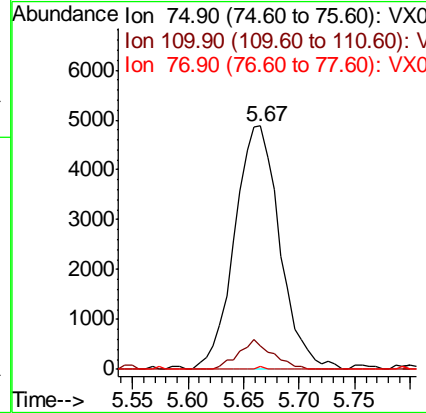
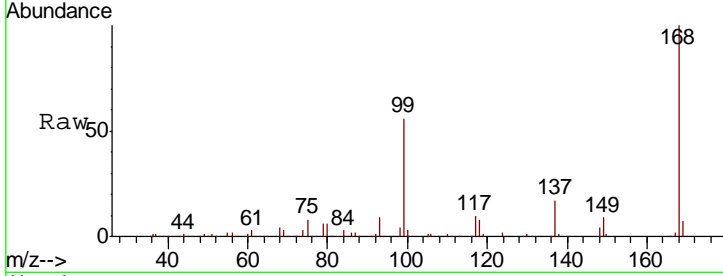




#36  
 1,1-Dichloropropene  
 Concen: 5.242 ug/l  
 RT: 5.67 min Scan# 740  
 Delta R.T. -0.13 min  
 Lab File: VX009735.D  
 Acq: 20 May 2019 18:47

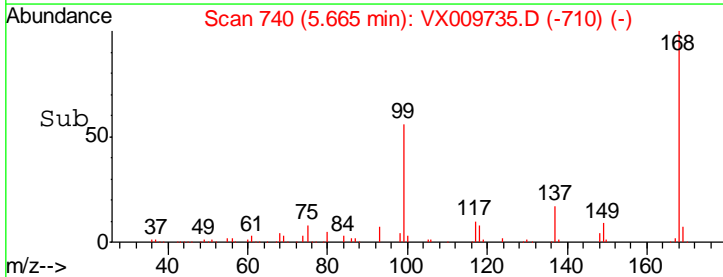
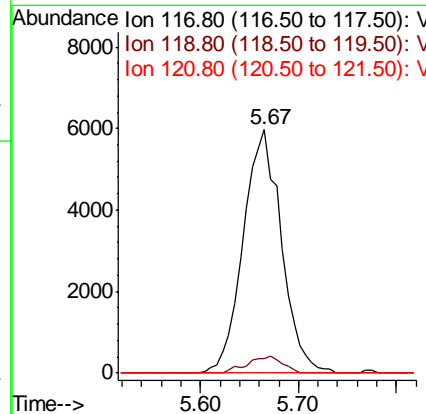
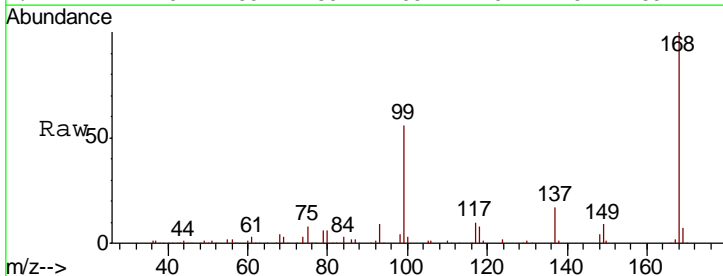
Instrument :  
 MSVOA\_X  
 ClientSampled :  
 S81-0103

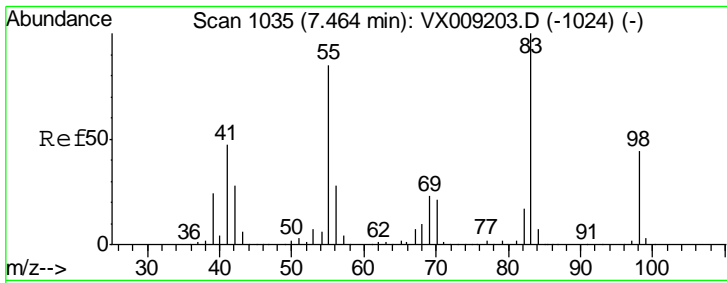
Tgt Ion	Resp	Lower	Upper
75	13753		
110	9.2	16.9	50.6#
77	0.1	24.8	37.2#



#38  
 Carbon Tetrachloride  
 Concen: 6.787 ug/l  
 RT: 5.67 min Scan# 740  
 Delta R.T. -0.12 min  
 Lab File: VX009735.D  
 Acq: 20 May 2019 18:47

Tgt Ion	Resp	Lower	Upper
117	16178		
119	6.2	77.5	116.3#
121	0.0	24.7	37.1#

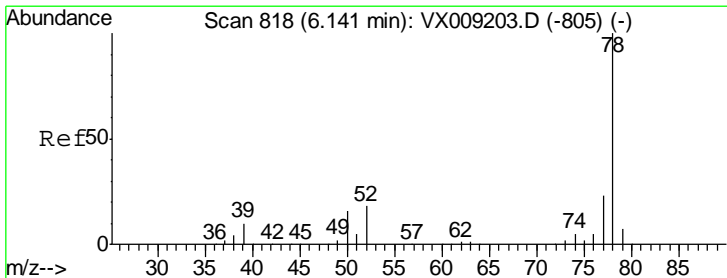
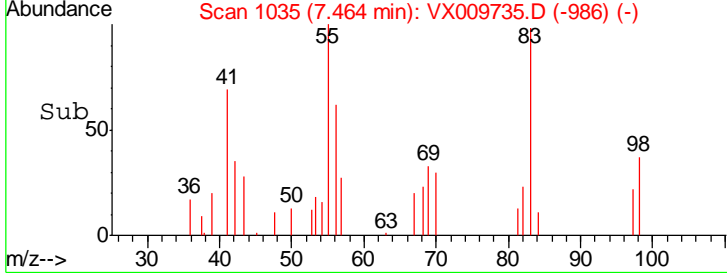
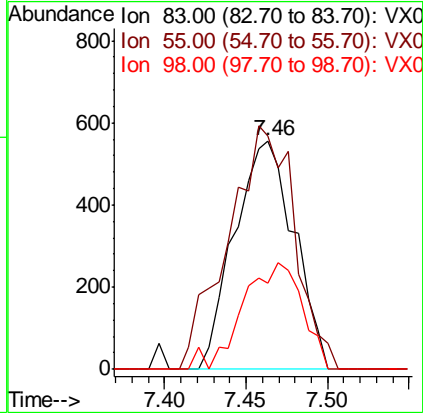
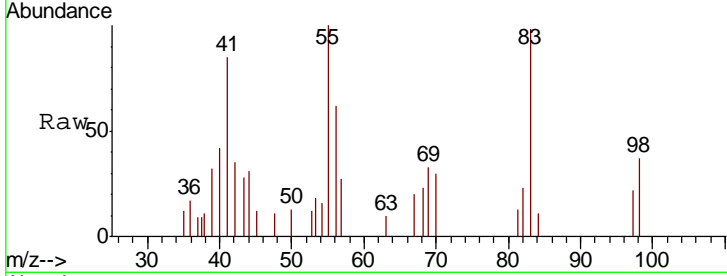




#39  
 Methylcyclohexane  
 Concen: 0.438 ug/l  
 RT: 7.46 min Scan# 1035  
 Delta R.T. 0.00 min  
 Lab File: VX009735.D  
 Acq: 20 May 2019 18:47

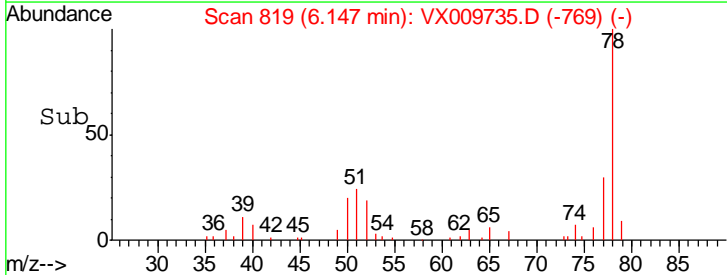
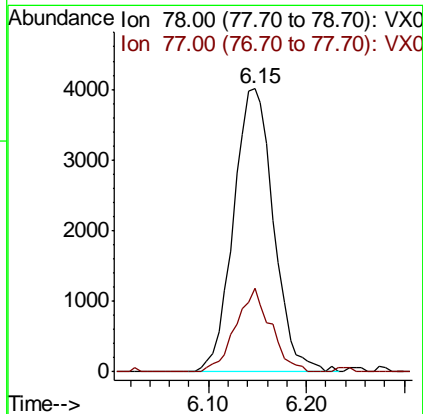
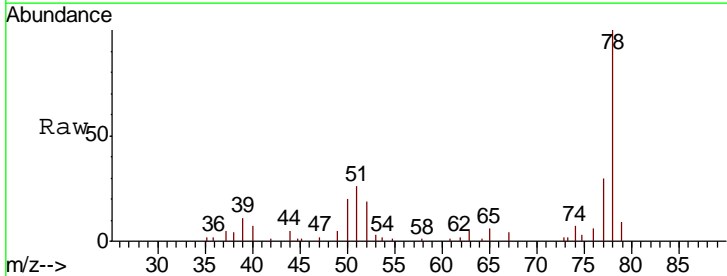
Instrument : MSVOA\_X  
 ClientSampled : S81-0103

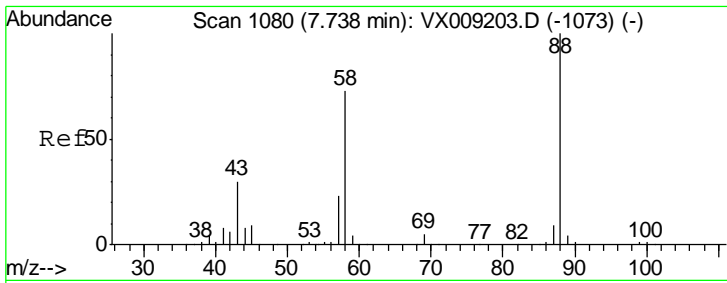
Tgt Ion	Resp	Lower	Upper
83	1412		
55	102.0	67.7	101.5#
98	37.5	35.5	53.3



#40  
 Benzene  
 Concen: 1.399 ug/l  
 RT: 6.15 min Scan# 819  
 Delta R.T. 0.01 min  
 Lab File: VX009735.D  
 Acq: 20 May 2019 18:47

Tgt Ion	Resp	Lower	Upper
78	11360		
77	29.7	18.8	28.2#

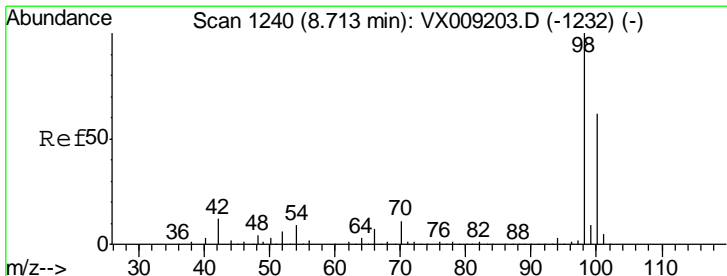
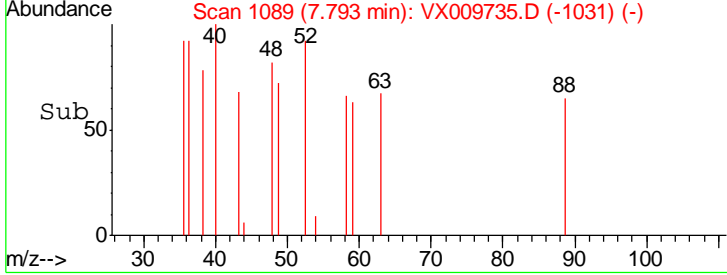
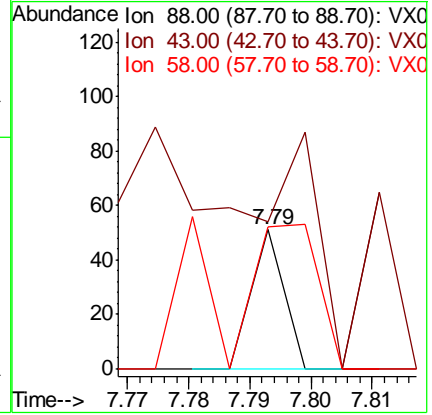
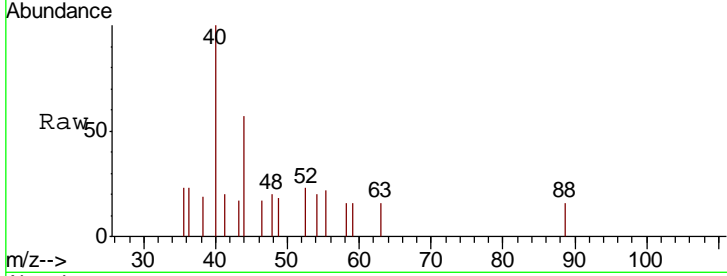




#49  
 1,4-Dioxane  
 Concen: 0.323 ug/l  
 RT: 7.79 min Scan# 1089  
 Delta R.T. 0.05 min  
 Lab File: VX009735.D  
 Acq: 20 May 2019 18:47

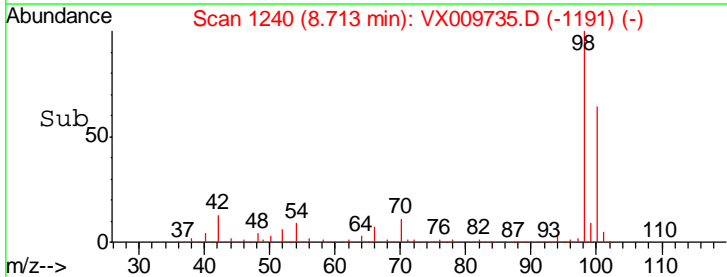
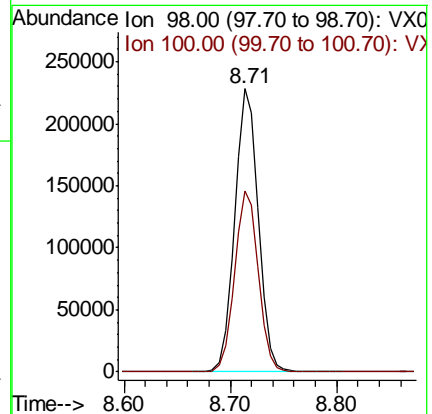
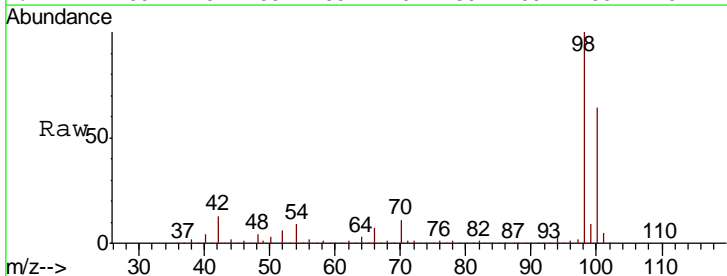
Instrument :  
 MSVOA\_X  
 ClientSampled :  
 S81-0103

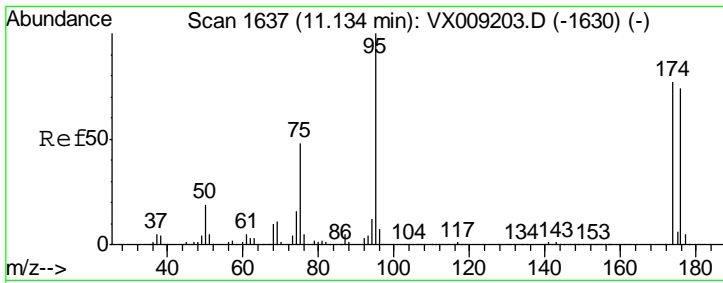
Tgt Ion	Resp	Lower	Upper
88	100		
43	784.2	28.6	42.8#
58	310.5	61.7	92.5#



#50  
 Toluene-d8  
 Concen: 49.543 ug/l  
 RT: 8.71 min Scan# 1240  
 Delta R.T. 0.00 min  
 Lab File: VX009735.D  
 Acq: 20 May 2019 18:47

Tgt Ion	Resp	Lower	Upper
98	100		
100	64.2	51.2	76.8

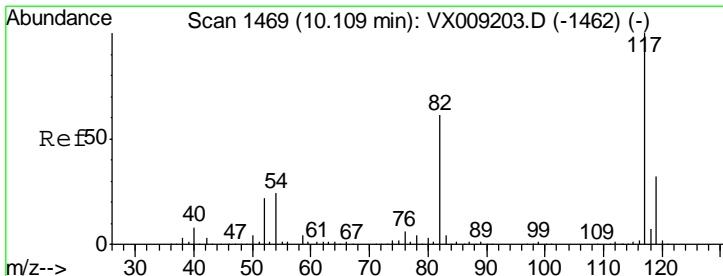
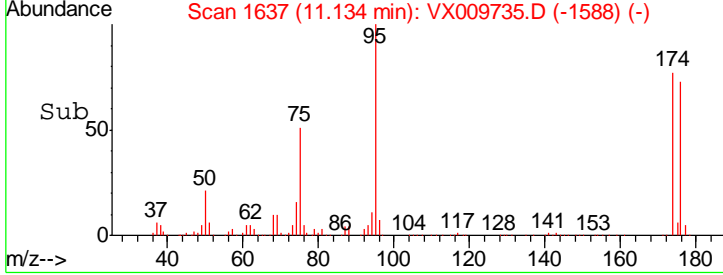
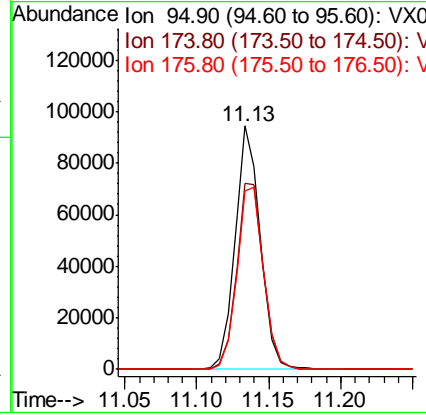
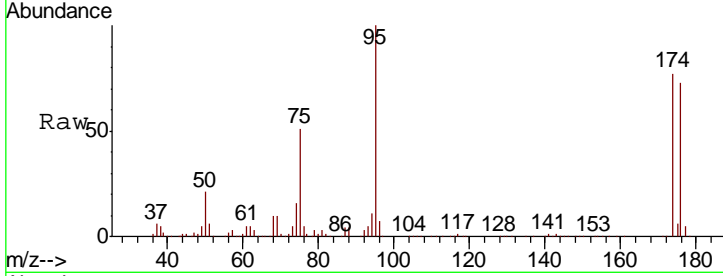




#62  
 4-Bromofluorobenzene  
 Concen: 44.378 ug/l  
 RT: 11.13 min Scan# 1637  
 Delta R.T. 0.00 min  
 Lab File: VX009735.D  
 Acq: 20 May 2019 18:47

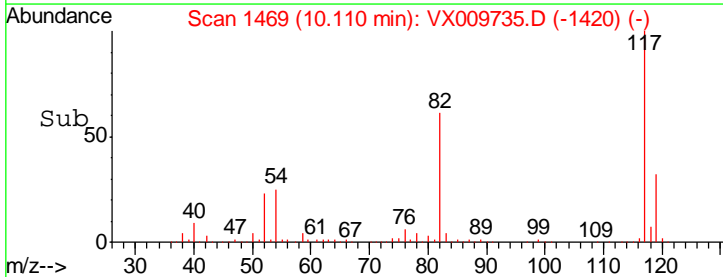
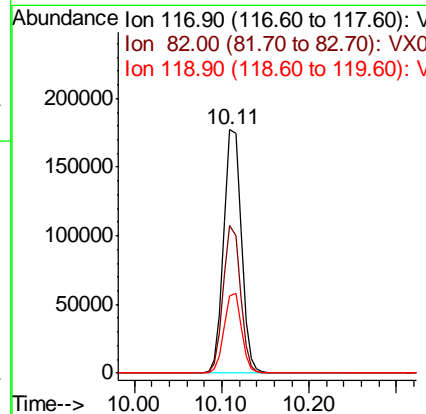
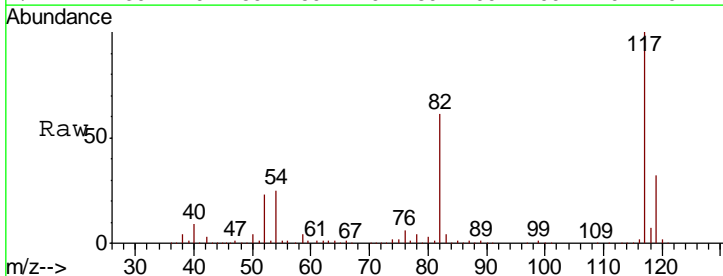
Instrument : MSVOA\_X  
 ClientSampled : S81-0103

Tgt Ion	Resp	Lower	Upper
95	115545		
174	81.6	0.0	161.6
176	79.0	0.0	159.2

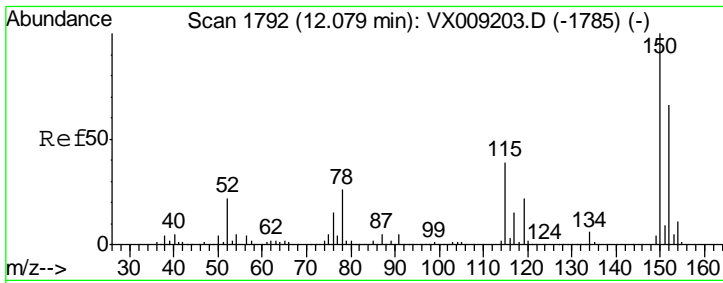


#63  
 Chlorobenzene-d5  
 Concen: 50.000 ug/l  
 RT: 10.11 min Scan# 1469  
 Delta R.T. 0.00 min  
 Lab File: VX009735.D  
 Acq: 20 May 2019 18:47

Tgt Ion	Resp	Lower	Upper
117	246788		
82	60.8	48.8	73.2
119	31.7	25.8	38.6



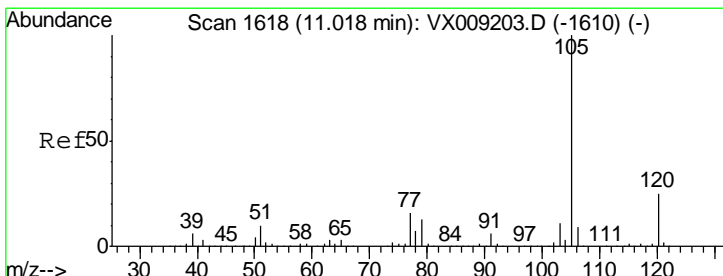
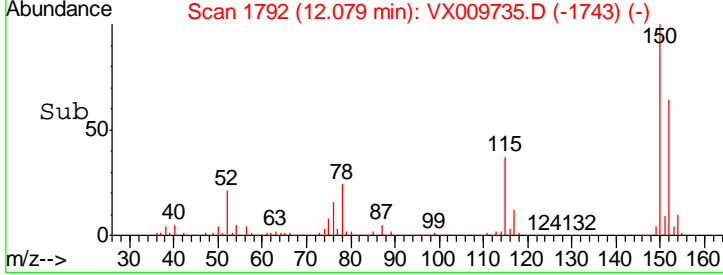
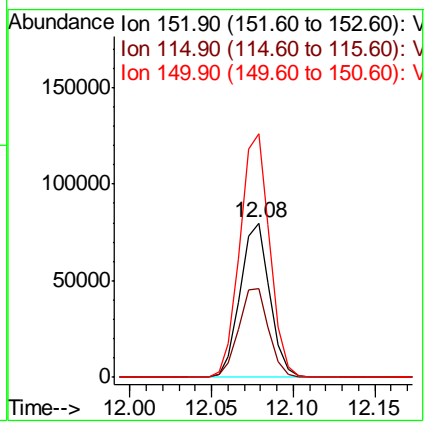
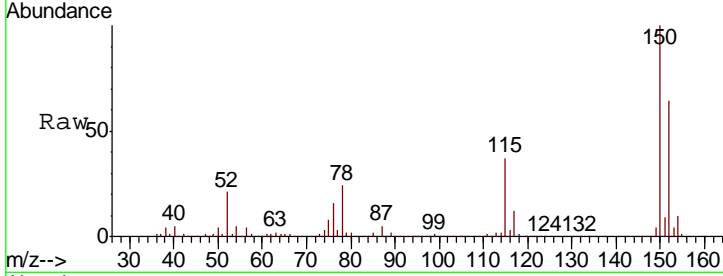




#72  
 1,4-Dichlorobenzene-d4  
 Concen: 50.000 ug/l  
 RT: 12.08 min Scan# 1792  
 Delta R.T. 0.00 min  
 Lab File: VX009735.D  
 Acq: 20 May 2019 18:47

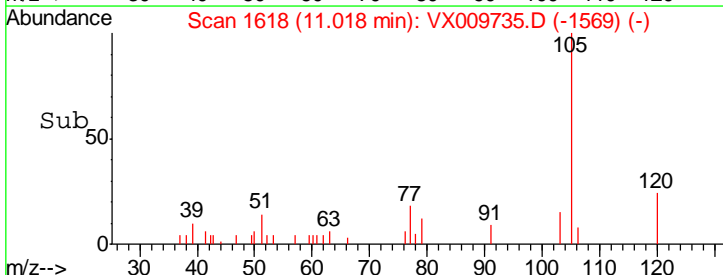
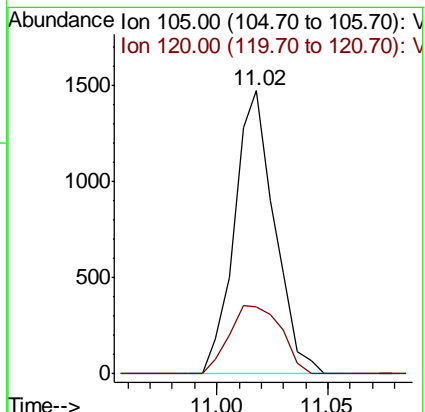
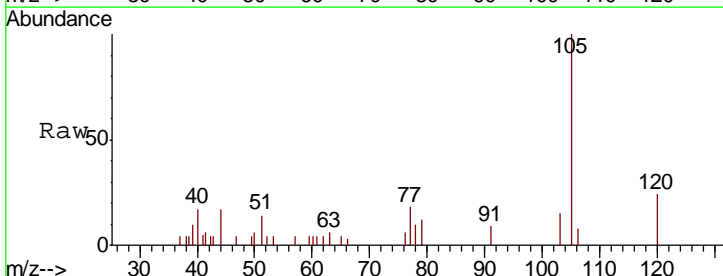
Instrument : MSVOA\_X  
 ClientSampled : S81-0103

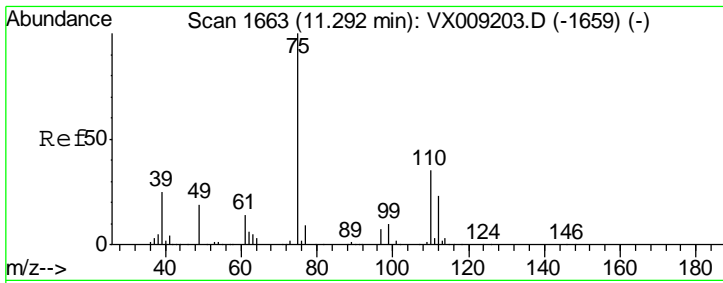
Tgt Ion	Resp	Lower	Upper
152	100905		
115	59.0	41.2	123.6
150	159.4	0.0	346.4



#73  
 Isopropylbenzene  
 Concen: 0.251 ug/l  
 RT: 11.02 min Scan# 1618  
 Delta R.T. 0.00 min  
 Lab File: VX009735.D  
 Acq: 20 May 2019 18:47

Tgt Ion	Resp	Lower	Upper
105	1844		
105	100		
120	31.3	12.8	38.3

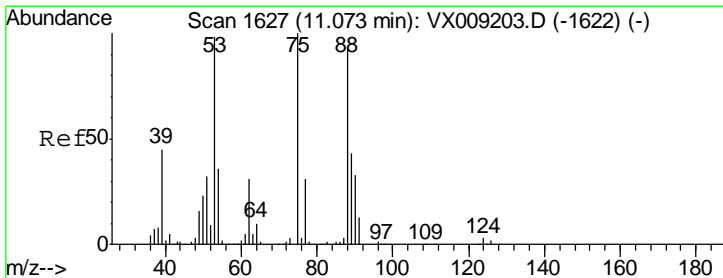
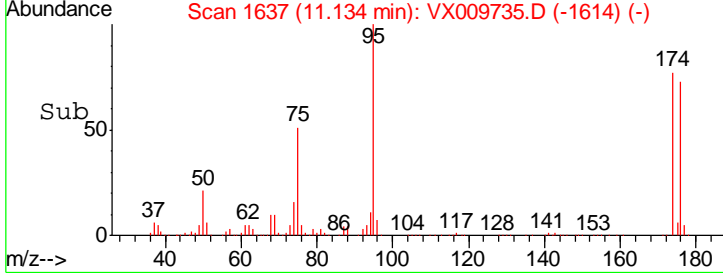
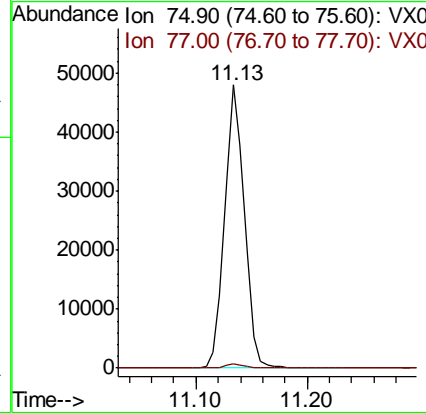
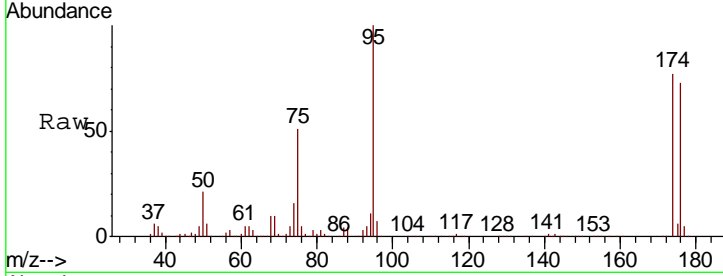




#76  
 1,2,3-Trichloropropane  
 Concen: 25.105 ug/l  
 RT: 11.13 min Scan# 1637  
 Delta R.T. -0.16 min  
 Lab File: VX009735.D  
 Acq: 20 May 2019 18:47

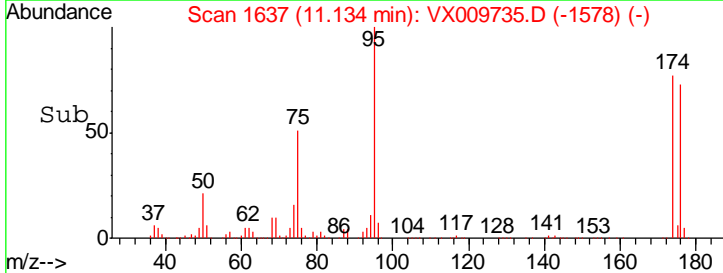
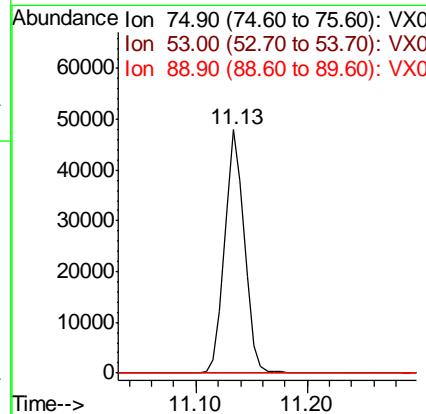
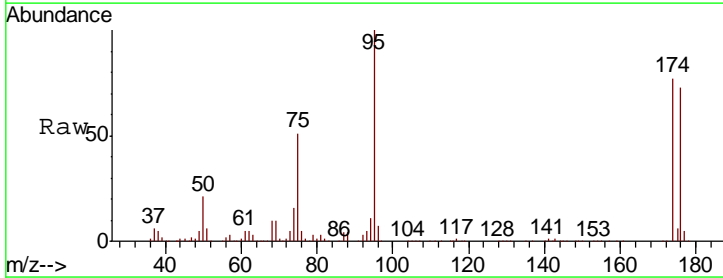
Instrument :  
 MSVOA\_X  
 ClientSampled :  
 S81-0103

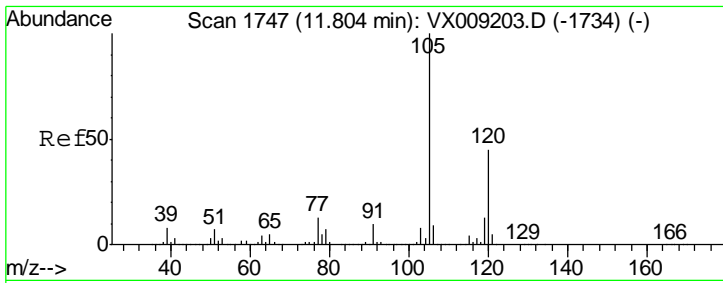
Tgt Ion: 75 Resp: 58761  
 Ion Ratio Lower Upper  
 75 100  
 77 1.4 22.1 66.1#



#81  
 trans-1,4-Dichloro-2-butene  
 Concen: 64.234 ug/l  
 RT: 11.13 min Scan# 1637  
 Delta R.T. 0.06 min  
 Lab File: VX009735.D  
 Acq: 20 May 2019 18:47

Tgt Ion: 75 Resp: 58761  
 Ion Ratio Lower Upper  
 75 100  
 53 0.1 79.0 118.6#  
 89 0.0 34.7 52.1#

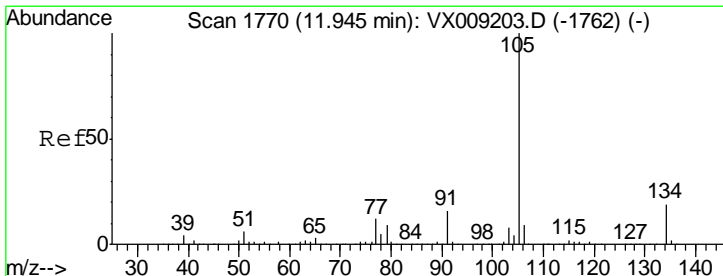
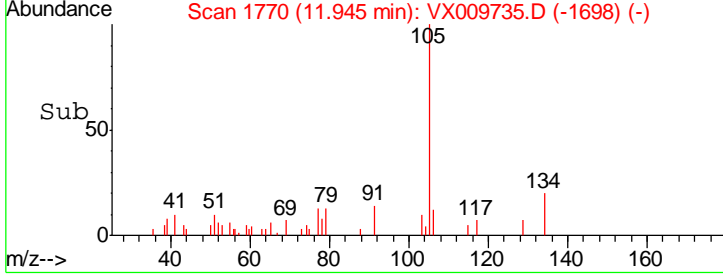
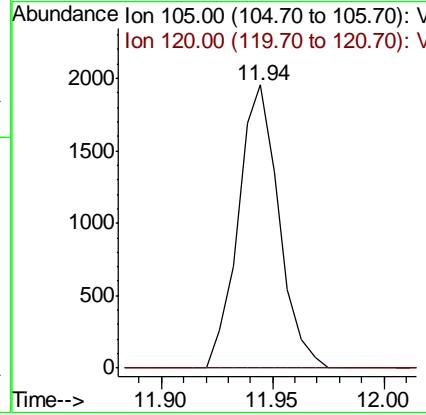
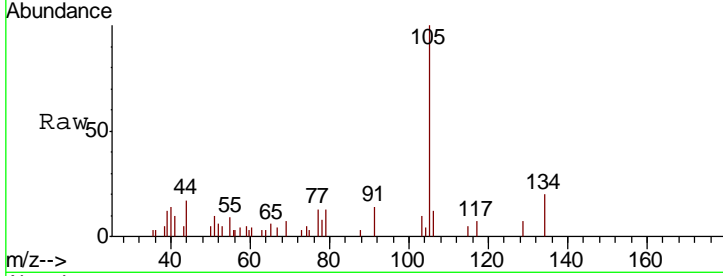




#84  
 1,2,4-Trimethylbenzene  
 Concen: 0.400 ug/l  
 RT: 11.94 min Scan# 1770  
 Delta R.T. 0.14 min  
 Lab File: VX009735.D  
 Acq: 20 May 2019 18:47

Instrument :  
 MSVOA\_X  
 ClientSampled :  
 S81-0103

Tgt Ion:105 Resp: 2480  
 Ion Ratio Lower Upper  
 105 100  
 120 0.0 22.0 66.0#



#85  
 sec-Butylbenzene  
 Concen: 0.348 ug/l  
 RT: 11.94 min Scan# 1770  
 Delta R.T. 0.00 min  
 Lab File: VX009735.D  
 Acq: 20 May 2019 18:47

Tgt Ion:105 Resp: 2480  
 Ion Ratio Lower Upper  
 105 100  
 134 27.1 9.7 28.9

