

Data Path : Z:\VOASRV\HPCHEM1\MSVOA X\DATA\VX052019\  
 Data File : VX009724.D  
 Acq On : 20 May 2019 14:29  
 Operator : JC/SP  
 Sample : K2952-04  
 Misc : 5.0mL/MSVOA X/WATER  
 ALS Vial : 11 Sample Multiplier: 1

Instrument :  
 MSVOA\_X  
 ClientSampleId :  
 BP-VPB202-DUP-20190516

Quant Time: May 21 08:17:17 2019  
 Quant Method : Z:\VOASRV\HPCHEM1\MSVOA\_X\METHOD\82X042919W.M  
 Quant Title : SW846 8260  
 QLast Update : Thu May 09 07:31:15 2019  
 Response via : Initial Calibration

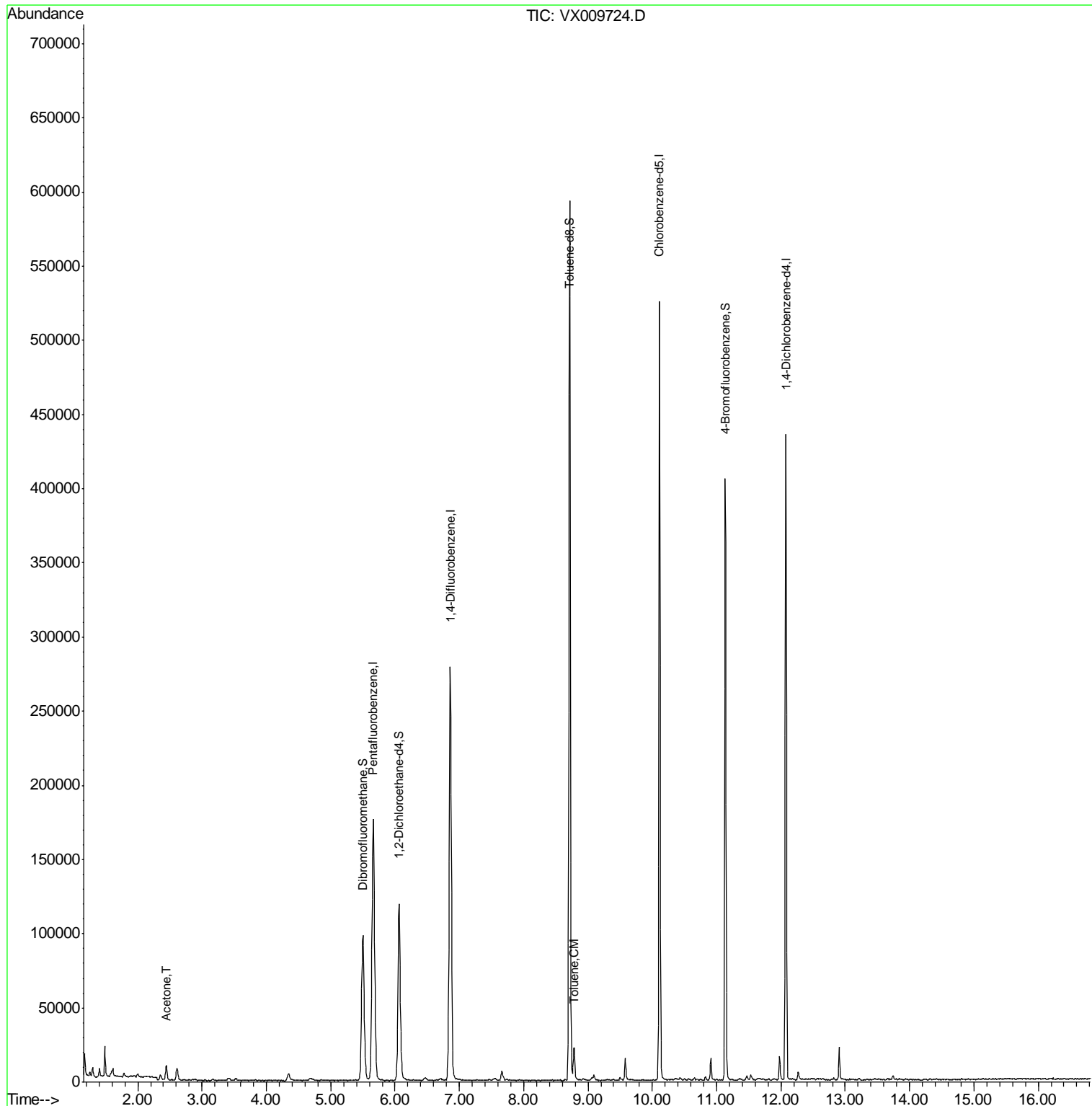
Internal Standards	R.T.	QIon	Response	Conc	Units	Dev(Min)
1) Pentafluorobenzene	5.66	168	170451	50.00	ug/l	0.00
34) 1,4-Difluorobenzene	6.86	114	270676	50.00	ug/l	0.00
63) Chlorobenzene-d5	10.11	117	232811	50.00	ug/l	0.00
72) 1,4-Dichlorobenzene-d4	12.08	152	89404	50.00	ug/l	0.00
System Monitoring Compounds						
33) 1,2-Dichloroethane-d4	6.06	65	113075	48.60	ug/l	0.00
Spiked Amount	50.000		Recovery	=	97.20%	
35) Dibromofluoromethane	5.50	113	83033	48.80	ug/l	0.00
Spiked Amount	50.000		Recovery	=	97.60%	
50) Toluene-d8	8.71	98	341761	49.75	ug/l	0.00
Spiked Amount	50.000		Recovery	=	99.50%	
62) 4-Bromofluorobenzene	11.13	95	105745	42.36	ug/l	0.00
Spiked Amount	50.000		Recovery	=	84.72%	
Target Compounds						
16) Acetone	2.45	43	11292	9.038	ug/l	92
52) Toluene	8.79	92	7943	1.679	ug/l	96

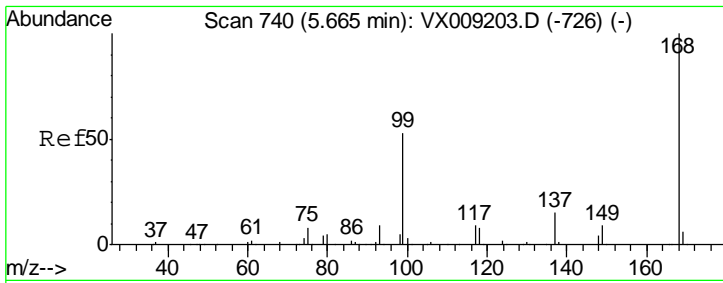
(#) = qualifier out of range (m) = manual integration (+) = signals summed

Data Path : Z:\VOASRV\HPCHEM1\MSVOA X\DATA\VX052019\  
 Data File : VX009724.D  
 Acq On : 20 May 2019 14:29  
 Operator : JC/SP  
 Sample : K2952-04  
 Misc : 5.0mL/MSVOA X/WATER  
 ALS Vial : 11 Sample Multiplier: 1

Instrument :  
 MSVOA\_X  
 ClientSampled :  
 BP-VPB202-DUP-20190516

Quant Time: May 21 08:17:17 2019  
 Quant Method : Z:\VOASRV\HPCHEM1\MSVOA\_X\METHOD\82X042919W.M  
 Quant Title : SW846 8260  
 QLast Update : Thu May 09 07:31:15 2019  
 Response via : Initial Calibration



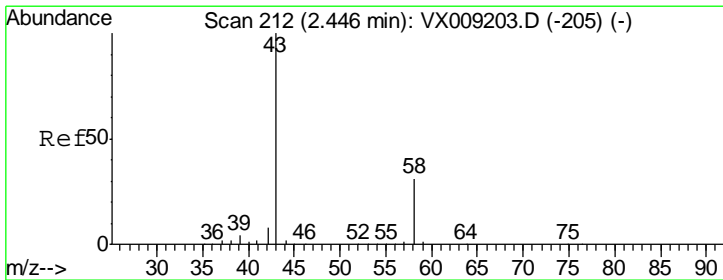
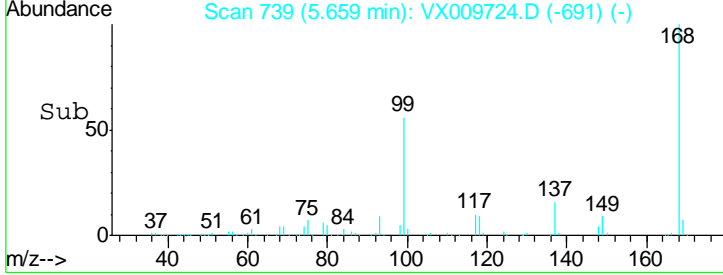
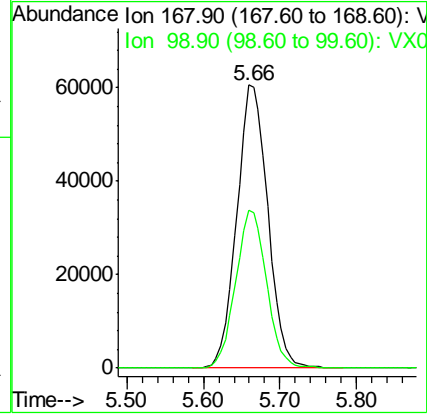
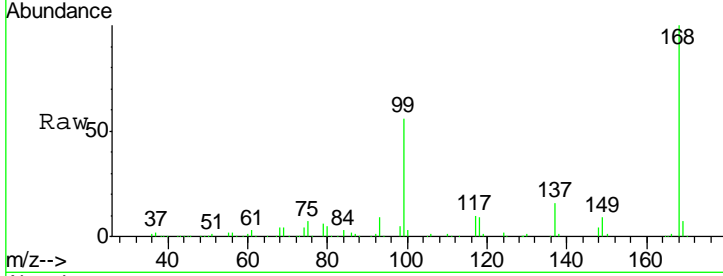


#1  
 Pentafluorobenzene  
 Concen: 50.000 ug/l  
 RT: 5.66 min Scan# 739  
 Delta R.T. -0.01 min  
 Lab File: VX009724.D  
 Acq: 20 May 2019 14:29

Instrument :  
 MSVOA\_X  
 ClientSampled :  
 BP-VPB202-DUP-20190516

Tgt Ion: 168 Resp: 170451

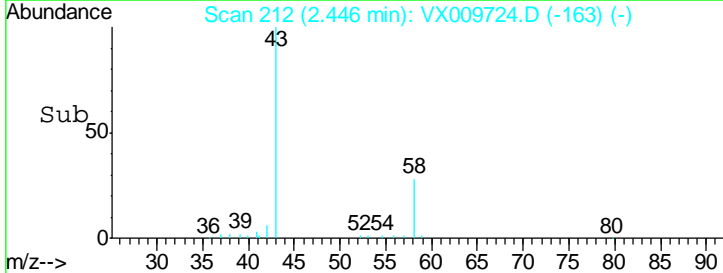
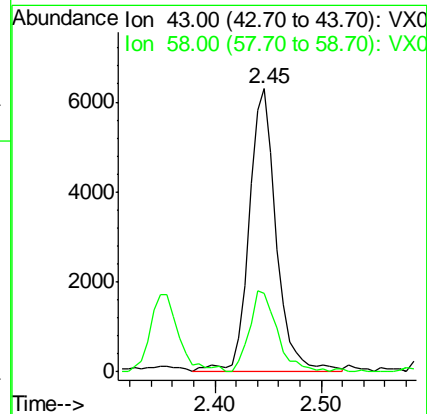
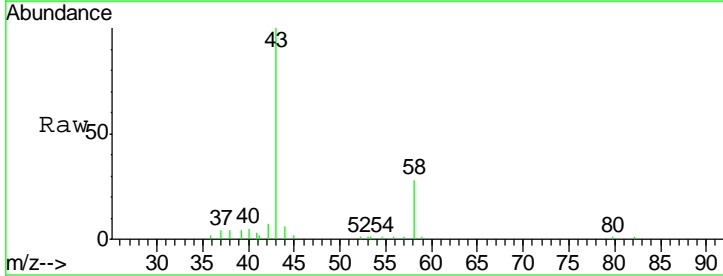
Ion	Ratio	Lower	Upper
168	100		
99	55.6	42.3	63.5

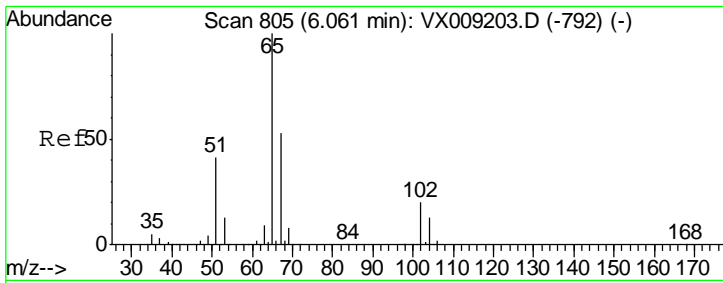


#16  
 Acetone  
 Concen: 9.038 ug/l  
 RT: 2.45 min Scan# 212  
 Delta R.T. 0.00 min  
 Lab File: VX009724.D  
 Acq: 20 May 2019 14:29

Tgt Ion: 43 Resp: 11292

Ion	Ratio	Lower	Upper
43	100		
58	26.4	24.9	37.3

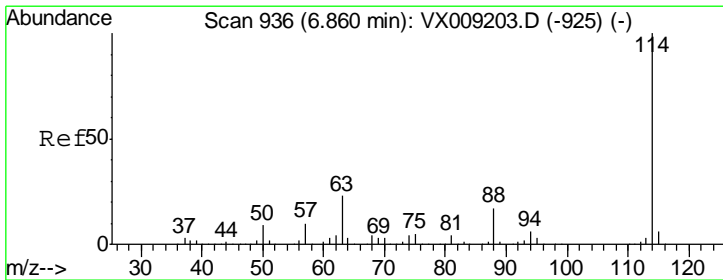
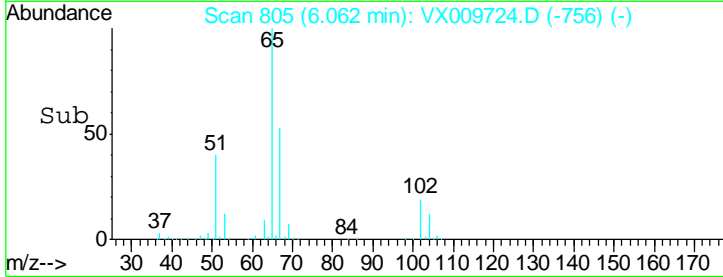
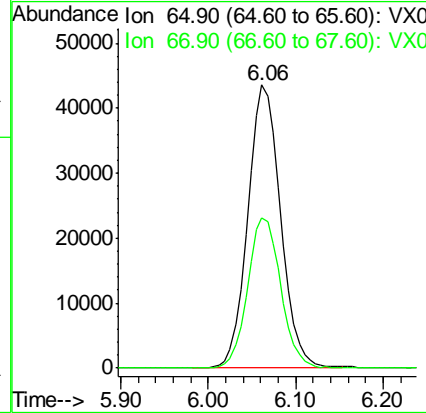
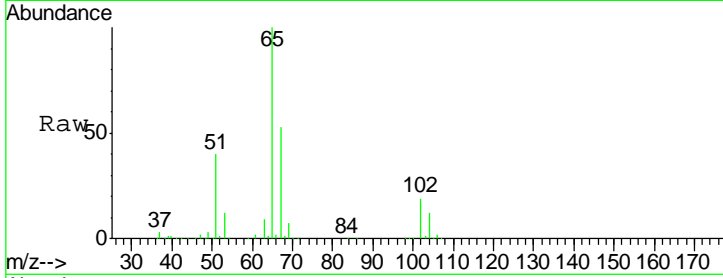




#33  
 1,2-Dichloroethane-d4  
 Concen: 48.596 ug/l  
 RT: 6.06 min Scan# 805  
 Delta R.T. 0.00 min  
 Lab File: VX009724.D  
 Acq: 20 May 2019 14:29

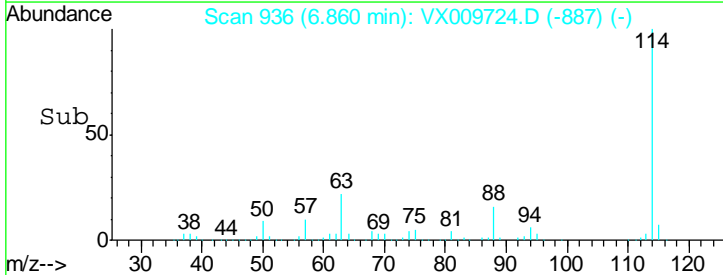
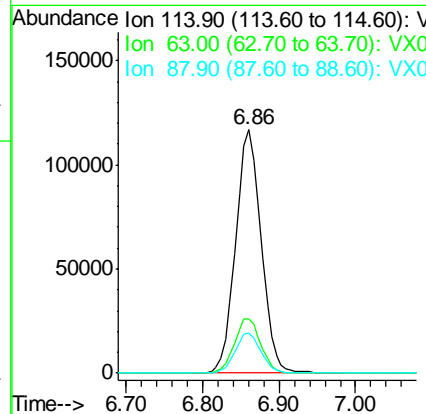
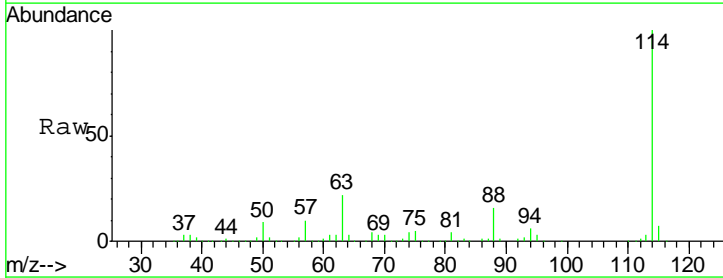
**Instrument :**  
 MSVOA\_X  
**ClientSampled :**  
 BP-VPB202-DUP-20190516

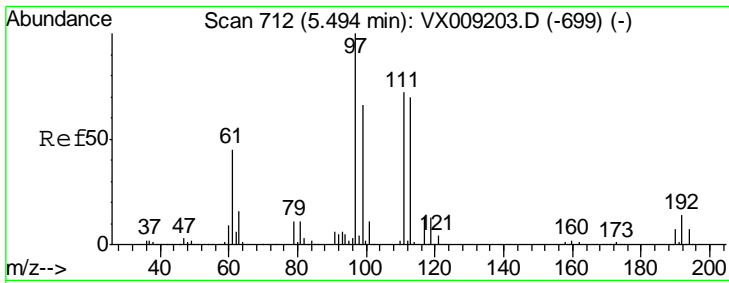
Tgt Ion	Resp	Lower	Upper
65	113075		
67	53.8	0.0	106.6



#34  
 1,4-Difluorobenzene  
 Concen: 50.000 ug/l  
 RT: 6.86 min Scan# 936  
 Delta R.T. 0.00 min  
 Lab File: VX009724.D  
 Acq: 20 May 2019 14:29

Tgt Ion	Resp	Lower	Upper
114	270676		
63	22.3	0.0	45.6
88	16.3	0.0	33.2

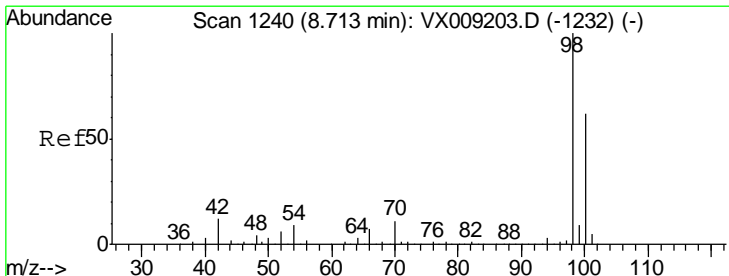
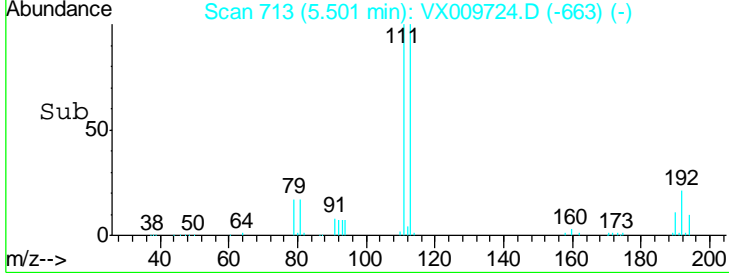
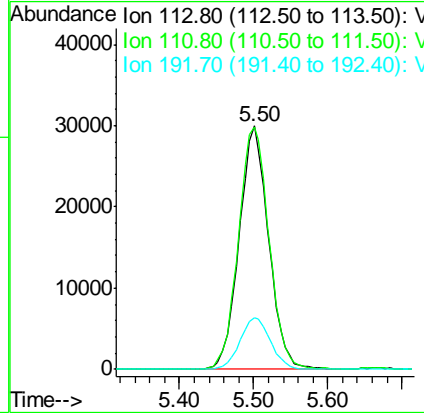
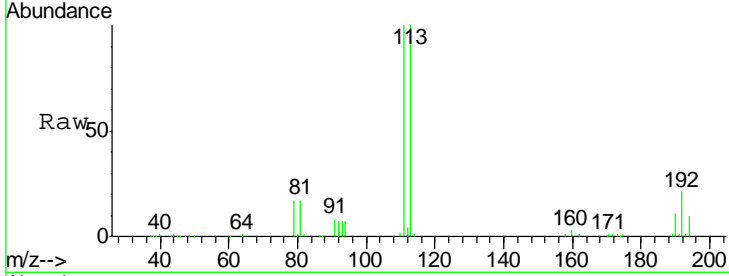




#35  
 Dibromofluoromethane  
 Concen: 48.798 ug/l  
 RT: 5.50 min Scan# 713  
 Delta R.T. 0.01 min  
 Lab File: VX009724.D  
 Acq: 20 May 2019 14:29

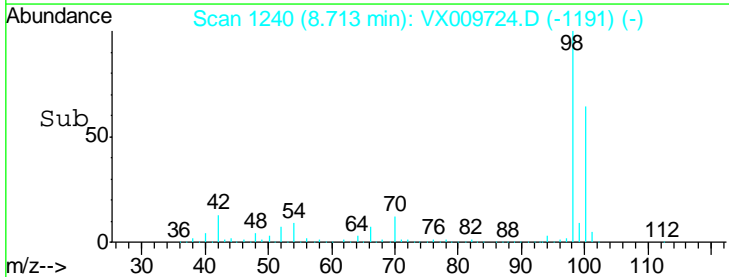
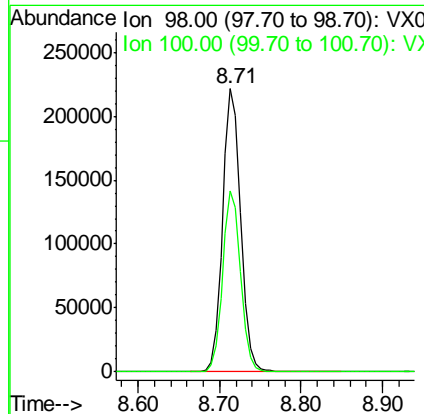
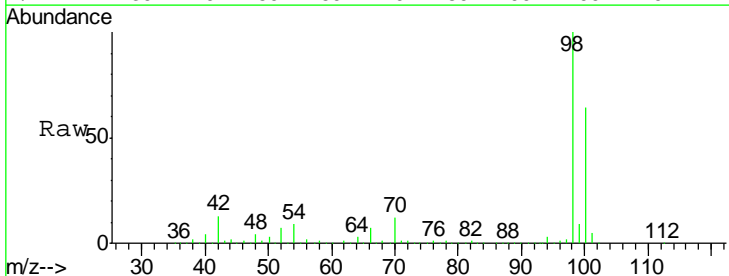
**Instrument :**  
 MSVOA\_X  
**ClientSampled :**  
 BP-VPB202-DUP-20190516

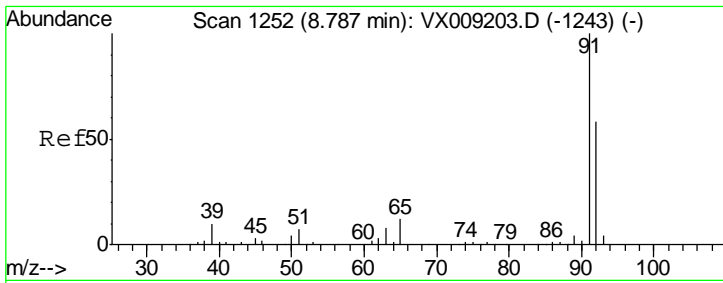
Tgt Ion	Resp	Lower	Upper
113	83033		
111	103.5	82.8	124.2
192	22.0	17.0	25.6



#50  
 Toluene-d8  
 Concen: 49.749 ug/l  
 RT: 8.71 min Scan# 1240  
 Delta R.T. 0.00 min  
 Lab File: VX009724.D  
 Acq: 20 May 2019 14:29

Tgt Ion	Resp	Lower	Upper
98	341761		
100	63.7	51.2	76.8

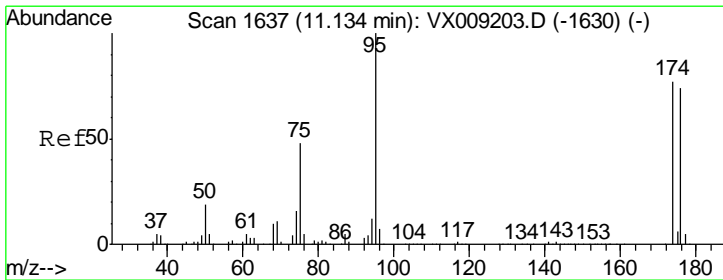
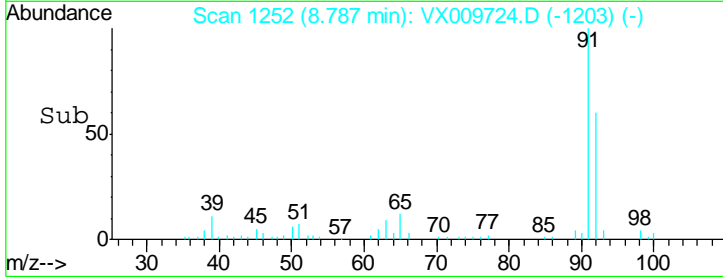
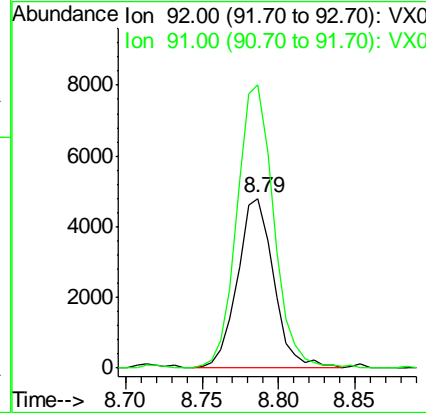
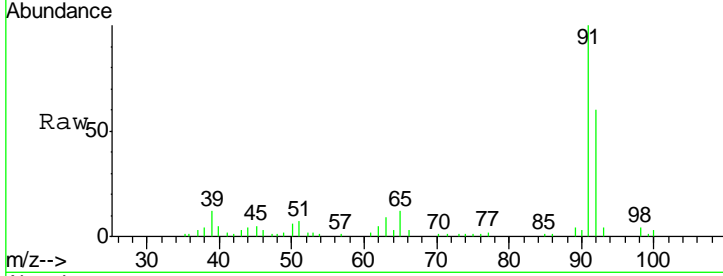




#52  
 Toluene  
 Concen: 1.679 ug/l  
 RT: 8.79 min Scan# 1252  
 Delta R.T. 0.00 min  
 Lab File: VX009724.D  
 Acq: 20 May 2019 14:29

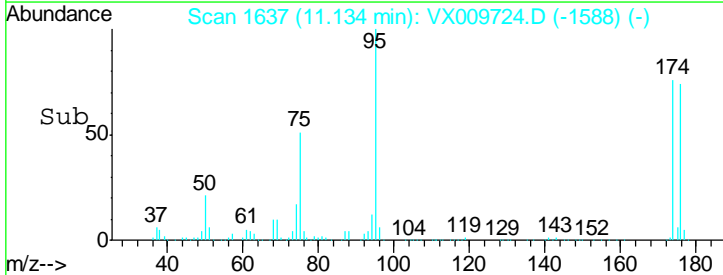
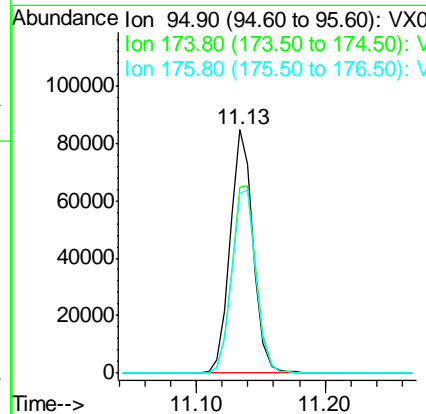
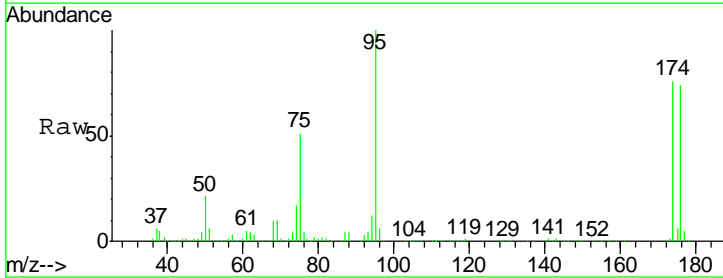
Instrument :  
 MSVOA\_X  
 ClientSampled :  
 BP-VPB202-DUP-20190516

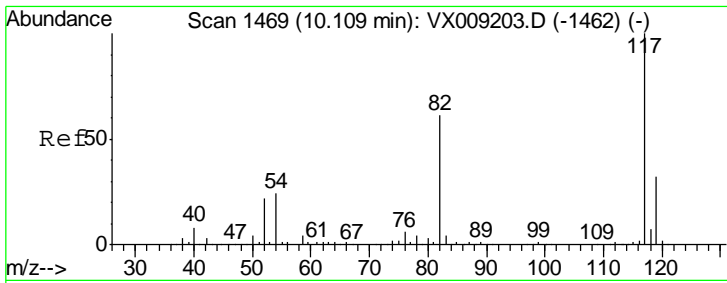
Tgt Ion: 92 Resp: 7943  
 Ion Ratio Lower Upper  
 92 100  
 91 168.6 138.8 208.2



#62  
 4-Bromofluorobenzene  
 Concen: 42.363 ug/l  
 RT: 11.13 min Scan# 1637  
 Delta R.T. 0.00 min  
 Lab File: VX009724.D  
 Acq: 20 May 2019 14:29

Tgt Ion: 95 Resp: 105745  
 Ion Ratio Lower Upper  
 95 100  
 174 82.0 0.0 161.6  
 176 79.6 0.0 159.2

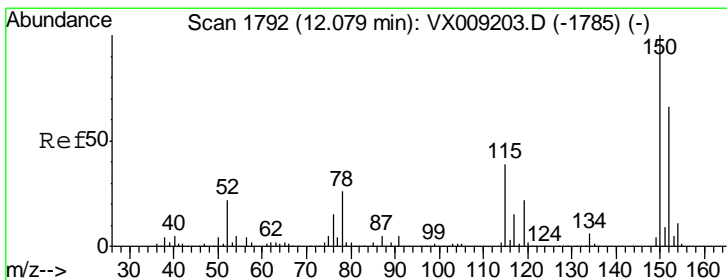
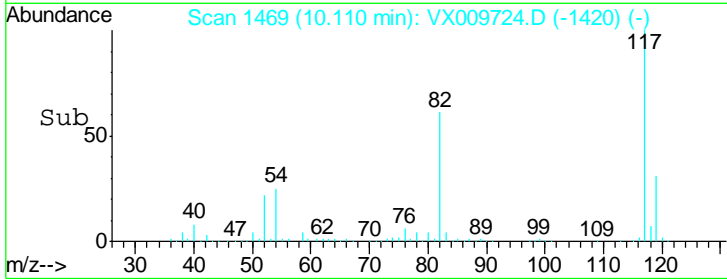
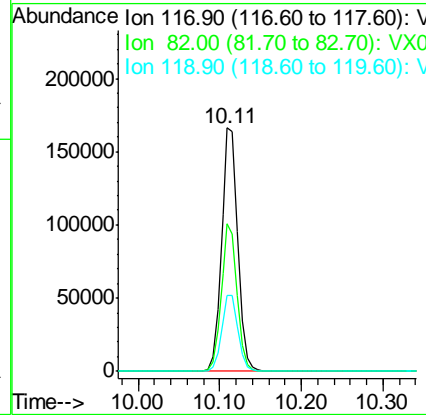
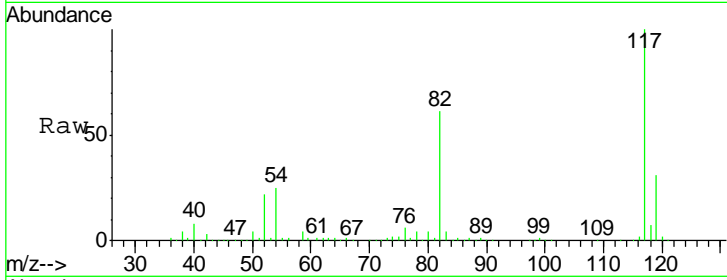




#63  
 Chlorobenzene-d5  
 Concen: 50.000 ug/l  
 RT: 10.11 min Scan# 1469  
 Delta R.T. 0.00 min  
 Lab File: VX009724.D  
 Acq: 20 May 2019 14:29

Instrument : MSVOA\_X  
 ClientSampled : BP-VPB202-DUP-20190516

Tgt Ion	Resp	Lower	Upper
117	232811		
82	60.9	48.8	73.2
119	31.5	25.8	38.6



#72  
 1,4-Dichlorobenzene-d4  
 Concen: 50.000 ug/l  
 RT: 12.08 min Scan# 1792  
 Delta R.T. 0.00 min  
 Lab File: VX009724.D  
 Acq: 20 May 2019 14:29

Tgt Ion	Resp	Lower	Upper
152	89404		
115	59.1	41.2	123.6
150	157.1	0.0	346.4

