

Data Path : Z:\VOASRV\HPCHEM1\MSVOA X\DATA\VX052120\  
 Data File : VX016377.D  
 Acq On : 21 May 2020 12:33  
 Operator : JC/SP  
 Sample : VX0521WBL01  
 Misc : 5.0mL/MSVOA X/WATER  
 ALS Vial : 3 Sample Multiplier: 1

Instrument :  
 MSVOA\_X  
 ClientSampleId :  
 VX0521WBL01

Integration Parameters: RTEINT.P  
 Integrator: RTE  
 Smoothing : ON Filtering: 5  
 Sampling : 1 Min Area: 3 % of largest Peak  
 Start Thrs: 0.2 Max Peaks: 100  
 Stop Thrs : 0 Peak Location: TOP

If leading or trailing edge < 100 prefer < Baseline drop else tangent >  
 Peak separation: 5

Method : Z:\VOASRV\HPCHEM1\MSVOA\_X\METHOD\82X050420W.M  
 Title : SW846 8260

Signal : TIC

peak #	R.T. min	first scan	max scan	last scan	PK TY	peak height	corr. area	corr. % max.	% of total
1	5.464	703	718	732	rBV	141915	408593	29.82%	5.724%
2	5.623	732	744	758	rVB	267012	748080	54.60%	10.480%
3	6.025	799	810	823	rBV	157692	414970	30.29%	5.813%
4	6.830	931	942	955	rBV	404844	971084	70.87%	13.604%
5	8.695	1241	1248	1260	rBV	885438	1370169	100.00%	19.195%
6	10.098	1471	1478	1493	rBV	853321	1196980	87.36%	16.768%
7	11.122	1640	1646	1659	rBV	719184	920281	67.17%	12.892%
8	12.061	1795	1800	1811	rVB	892037	1108178	80.88%	15.524%

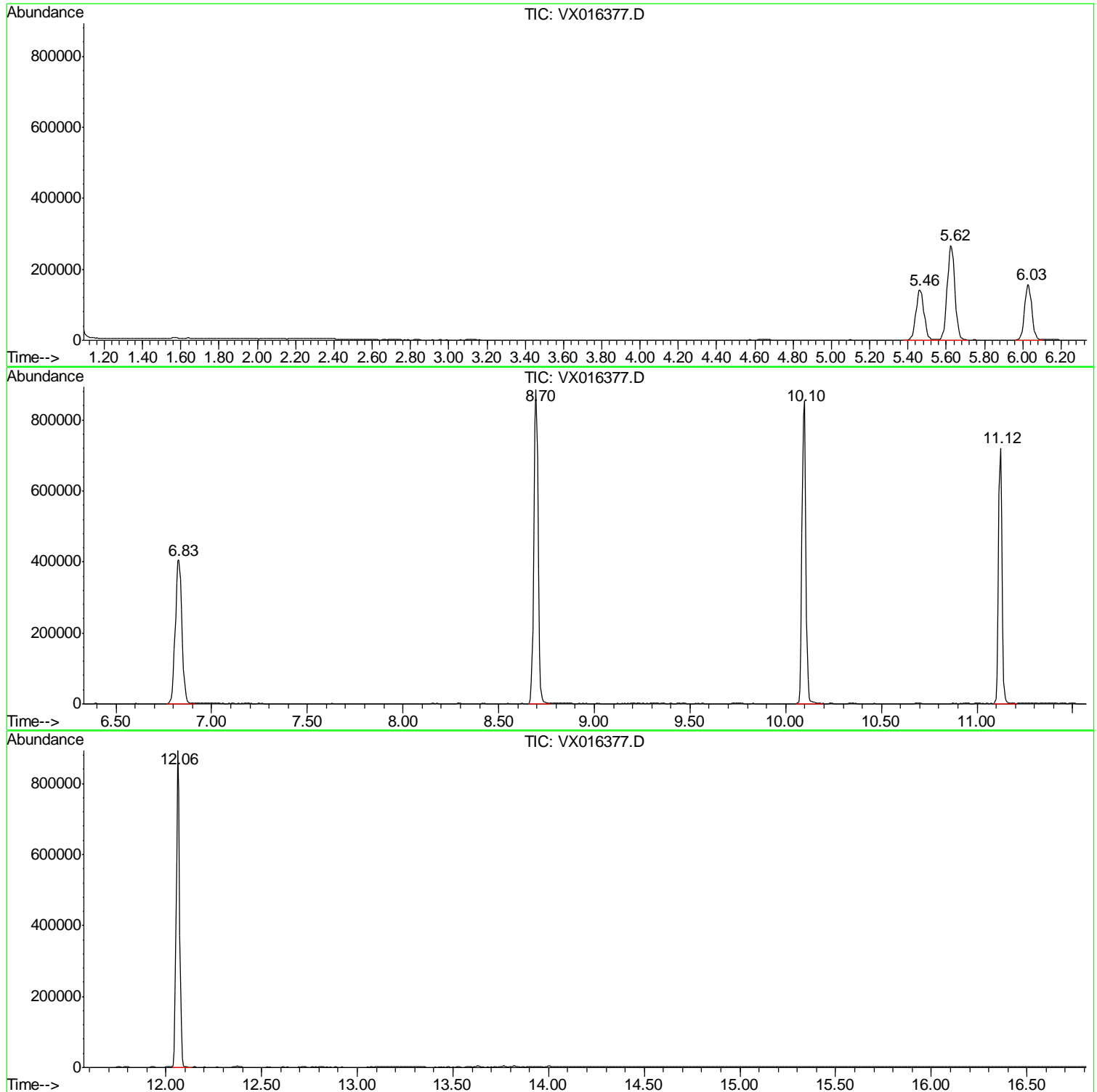
Sum of corrected areas: 7138335

Data Path : Z:\VOASRV\HPCHEM1\MSVOA X\DATA\VX052120\  
Data File : VX016377.D  
Acq On : 21 May 2020 12:33  
Operator : JC/SP  
Sample : VX0521WBL01  
Misc : 5.0mL/MSVOA X/WATER  
ALS Vial : 3 Sample Multiplier: 1

Instrument :  
MSVOA\_X  
ClientSampled :  
VX0521WBL01

Quant Method : Z:\VOASRV\HPCHEM1\MSVOA\_X\METHOD\82X050420W.M  
Quant Title : SW846 8260

TIC Library : C:\DATABASE\NIST11.L  
TIC Integration Parameters: LSCINT.P



Data Path : Z:\VOASRV\HPCHEM1\MSVOA\_X\DATA\VX052120\  
Data File : VX016377.D  
Acq On : 21 May 2020 12:33  
Operator : JC/SP  
Sample : VX0521WBL01  
Misc : 5.0mL/MSVOA\_X/WATER  
ALS Vial : 3 Sample Multiplier: 1

**Instrument :**  
MSVOA\_X  
**ClientSampleId :**  
VX0521WBL01

Quant Method : Z:\VOASRV\HPCHEM1\MSVOA\_X\METHOD\82X050420W.M  
Quant Title : SW846 8260

TIC Library : C:\DATABASE\NIST11.L  
TIC Integration Parameters: LSCINT.P

No Library Search Compounds Detected

\*\*\*\*\*

Data Path : Z:\VOASRV\HPCHEM1\MSVOA\_X\DATA\VX052120\  
Data File : VX016377.D  
Acq On : 21 May 2020 12:33  
Operator : JC/SP  
Sample : VX0521WBL01  
Misc : 5.0mL/MSVOA\_X/WATER  
ALS Vial : 3 Sample Multiplier: 1

Instrument :  
MSVOA\_X  
ClientSampleId :  
VX0521WBL01

Quant Method : Z:\VOASRV\HPCHEM1\MSVOA\_X\METHOD\82X050420W.M  
Quant Title : SW846 8260

TIC Library : C:\DATABASE\NIST11.L  
TIC Integration Parameters: LSCINT.P

TIC Top Hit name	RT	EstConc	Units	Response	--Internal Standard--			
					#	RT	Resp	Conc

---