

Data Path : Z:\VOASRV\HPCHEM1\MSVOA X\DATA\VX052219\
 Data File : VX009823.D
 Acq On : 22 May 2019 23:44
 Operator : JC/SP
 Sample : K2976-02 50X
 Misc : 5.76µ/5mL/100uL/5.00mL/MSVOA_X/MEOH
 ALS Vial : 35 Sample Multiplier: 1

Instrument :
 MSVOA_X
 ClientSampleId :
 EP1-SB-E2-3R(17-20)

Integration Parameters: RTEINT.P

Integrator: RTE
 Smoothing : ON
 Sampling : 1
 Start Thrs: 0.2
 Stop Thrs : 0

Filtering: 5
 Min Area: 3 % of largest Peak
 Max Peaks: 100
 Peak Location: TOP

If leading or trailing edge < 100 prefer < Baseline drop else tangent >
 Peak separation: 5

Method : Z:\VOASRV\HPCHEM1\MSVOA_X\METHOD\82X042919W.M
 Title : SW846 8260

Signal : TIC

peak #	R.T. min	first scan	max scan	last scan	PK TY	peak height	corr. area	corr. % max.	% of total
1	5.500	700	713	726	rBV	102258	295339	19.80%	1.141%
2	5.659	727	739	753	rVV	181451	513261	34.41%	1.984%
3	6.061	794	805	820	rBV	126935	334816	22.45%	1.294%
4	6.860	923	936	947	rBV	294178	699905	46.92%	2.705%
5	8.665	1223	1232	1234	rBV2	15368	25315	1.70%	0.098%
6	8.713	1234	1240	1253	rVB	634520	984394	65.99%	3.804%
7	9.043	1287	1294	1301	rVB2	18237	32478	2.18%	0.126%
8	9.164	1305	1314	1319	rVB2	10285	16326	1.09%	0.063%
9	9.445	1351	1360	1368	rBV	24921	44348	2.97%	0.171%
10	9.561	1373	1379	1385	rBV3	29685	63342	4.25%	0.245%
11	9.622	1385	1389	1393	rVB	36325	49676	3.33%	0.192%
12	9.677	1393	1398	1402	rBV	72033	107525	7.21%	0.416%
13	9.817	1414	1421	1425	rBV2	11765	19277	1.29%	0.074%
14	9.890	1425	1433	1437	rVV3	80213	186994	12.54%	0.723%
15	9.957	1440	1444	1449	rVB	67531	91993	6.17%	0.356%
16	10.061	1455	1461	1465	rBV2	43348	72331	4.85%	0.280%
17	10.109	1465	1469	1475	rVV	606018	809765	54.29%	3.129%
18	10.176	1475	1480	1485	rVB4	24892	57498	3.85%	0.222%
19	10.237	1485	1490	1496	rBV2	56567	101416	6.80%	0.392%
20	10.335	1496	1506	1508	rBV	116884	216276	14.50%	0.836%
21	10.372	1508	1512	1516	rVV	200575	267248	17.92%	1.033%
22	10.408	1516	1518	1530	rVB2	145110	251858	16.88%	0.973%
23	10.512	1530	1535	1541	rBV2	99826	150589	10.10%	0.582%
24	10.585	1541	1547	1549	rBV2	45208	62081	4.16%	0.240%
25	10.640	1549	1556	1564	rBV3	435362	777964	52.16%	3.007%
26	10.725	1564	1570	1574	rBV3	228234	379197	25.42%	1.465%
27	10.768	1574	1577	1580	rVB2	109977	134649	9.03%	0.520%
28	10.835	1580	1588	1592	rBV2	1022592	1491632	100.00%	5.765%
29	10.908	1592	1600	1604	rBV2	824692	1387732	93.03%	5.363%
30	10.945	1604	1606	1611	rVB	443520	576613	38.66%	2.228%
31	11.006	1611	1616	1621	rVB4	129864	235108	15.76%	0.909%
32	11.060	1621	1625	1626	rBV2	173205	246127	16.50%	0.951%
33	11.085	1626	1629	1632	rVB2	250876	312142	20.93%	1.206%
34	11.134	1632	1637	1642	rVB	800123	1124853	75.41%	4.347%

Data Path : Z:\VOASRV\HPCHEM1\MSVOA X\DATA\VX052219\
 Data File : VX009823.D
 Acq On : 22 May 2019 23:44
 Operator : JC/SP
 Sample : K2976-02 50X
 Misc : 5.76µ/5mL/100uL/5.00mL/MSVOA_X/MEOH
 ALS Vial : 35 Sample Multiplier: 1

Instrument :
 MSVOA_X
 ClientSampleId :
 EP1-SB-E2-3R(17-20)

Integration Parameters: RTEINT.P
 Integrator: RTE
 Smoothing : ON
 Sampling : 1
 Start Thrs: 0.2
 Stop Thrs : 0

Filtering: 5
 Min Area: 3 % of largest Peak
 Max Peaks: 100
 Peak Location: TOP

If leading or trailing edge < 100 prefer < Baseline drop else tangent >
 Peak separation: 5

Method : Z:\VOASRV\HPCHEM1\MSVOA_X\METHOD\82X042919W.M
 Title : SW846 8260

35	11.182	1642	1645	1648	rBV	142919	165752	11.11%	0.641%
36	11.219	1648	1651	1653	rBV	89225	109264	7.33%	0.422%
37	11.274	1653	1660	1669	rVB3	561070	996891	66.83%	3.853%
38	11.359	1669	1674	1676	rBV	170610	214732	14.40%	0.830%
39	11.396	1676	1680	1684	rBV2	150303	224610	15.06%	0.868%
40	11.445	1684	1688	1691	rBV2	224297	328806	22.04%	1.271%
41	11.481	1691	1694	1699	rBV	448092	554500	37.17%	2.143%
42	11.530	1699	1702	1707	rVB3	291064	455926	30.57%	1.762%
43	11.579	1707	1710	1715	rVB4	89488	126398	8.47%	0.488%
44	11.627	1715	1718	1720	rBV	69394	81856	5.49%	0.316%
45	11.682	1720	1727	1732	rVB5	278685	520399	34.89%	2.011%
46	11.737	1732	1736	1738	rBV2	216532	279969	18.77%	1.082%
47	11.768	1738	1741	1744	rVB	836913	860433	57.68%	3.325%
48	11.804	1744	1747	1749	rBV2	156094	209563	14.05%	0.810%
49	11.890	1757	1761	1763	rBV	177090	252144	16.90%	0.974%
50	11.920	1763	1766	1767	rVV	231614	306231	20.53%	1.183%
51	11.944	1767	1770	1774	rVV	432967	687764	46.11%	2.658%
52	11.999	1774	1779	1782	rVV	548408	825920	55.37%	3.192%
53	12.030	1782	1784	1787	rVV2	174996	240858	16.15%	0.931%
54	12.079	1787	1792	1797	rVV2	699320	1200217	80.46%	4.638%
55	12.121	1797	1799	1803	rVV2	153624	210554	14.12%	0.814%
56	12.164	1803	1806	1808	rVV3	69657	100272	6.72%	0.388%
57	12.213	1808	1814	1824	rVB7	94279	353079	23.67%	1.365%
58	12.298	1824	1828	1834	rBV2	235613	339235	22.74%	1.311%
59	12.365	1834	1839	1846	rVV2	379170	747839	50.14%	2.890%
60	12.469	1846	1856	1862	rVV3	142910	460540	30.87%	1.780%
61	12.524	1862	1865	1870	rVV4	137087	243226	16.31%	0.940%
62	12.609	1870	1879	1881	rVV5	118942	281875	18.90%	1.089%
63	12.633	1881	1883	1885	rVV2	131413	168115	11.27%	0.650%
64	12.664	1885	1888	1891	rVV	245729	330790	22.18%	1.278%
65	12.694	1891	1893	1897	rVV3	74002	115756	7.76%	0.447%
66	12.755	1897	1903	1910	rVV6	108804	336865	22.58%	1.302%
67	12.816	1910	1913	1918	rVV4	37891	83273	5.58%	0.322%
68	12.871	1918	1922	1929	rVB4	131368	219855	14.74%	0.850%
69	12.944	1929	1934	1937	rBV3	124286	219021	14.68%	0.846%
70	12.975	1937	1939	1943	rVV2	121280	138128	9.26%	0.534%
71	13.017	1943	1946	1947	rVV	29151	35003	2.35%	0.135%

Data Path : Z:\VOASRV\HPCHEM1\MSVOA X\DATA\VX052219\
 Data File : VX009823.D
 Acq On : 22 May 2019 23:44
 Operator : JC/SP
 Sample : K2976-02 50X
 Misc : 5.76µ/5mL/100uL/5.00mL/MSVOA_X/MEOH
 ALS Vial : 35 Sample Multiplier: 1

Instrument :
 MSVOA_X
 ClientSampleId :
 EP1-SB-E2-3R(17-20)

Integration Parameters: RTEINT.P

Integrator: RTE
 Smoothing : ON Filtering: 5
 Sampling : 1 Min Area: 3 % of largest Peak
 Start Thrs: 0.2 Max Peaks: 100
 Stop Thrs : 0 Peak Location: TOP

If leading or trailing edge < 100 prefer < Baseline drop else tangent >
 Peak separation: 5

Method : Z:\VOASRV\HPCHEM1\MSVOA_X\METHOD\82X042919W.M
 Title : SW846 8260

72	13.042	1947	1950	1953	rVV	70704	90412	6.06%	0.349%
73	13.078	1953	1956	1962	rVB2	39937	76723	5.14%	0.297%
74	13.145	1963	1967	1972	rBV3	33409	56907	3.82%	0.220%
75	13.194	1972	1975	1978	rVB2	22185	21522	1.44%	0.083%
76	13.341	1995	1999	2006	rVB2	133607	203589	13.65%	0.787%
77	13.438	2010	2015	2017	rVV2	29159	49616	3.33%	0.192%
78	13.475	2018	2021	2031	rVB8	33339	79830	5.35%	0.309%
79	13.560	2031	2035	2038	rBV5	11281	17509	1.17%	0.068%
80	13.639	2044	2048	2051	rBV3	20894	30988	2.08%	0.120%
81	13.688	2052	2056	2059	rVV6	9101	19712	1.32%	0.076%
82	13.719	2059	2061	2070	rVB5	14899	29091	1.95%	0.112%
83	13.798	2070	2074	2078	rBV4	10791	20160	1.35%	0.078%
84	13.895	2086	2090	2096	rVB4	10399	15937	1.07%	0.062%
85	14.694	2217	2221	2231	rVB	12158	17513	1.17%	0.068%

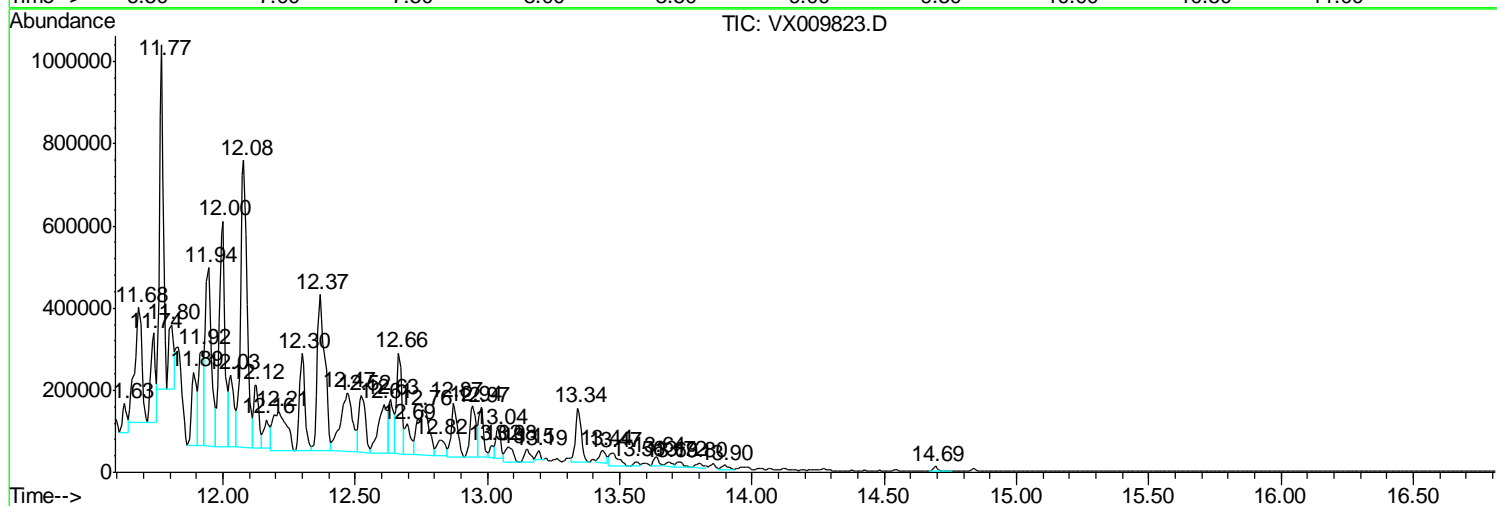
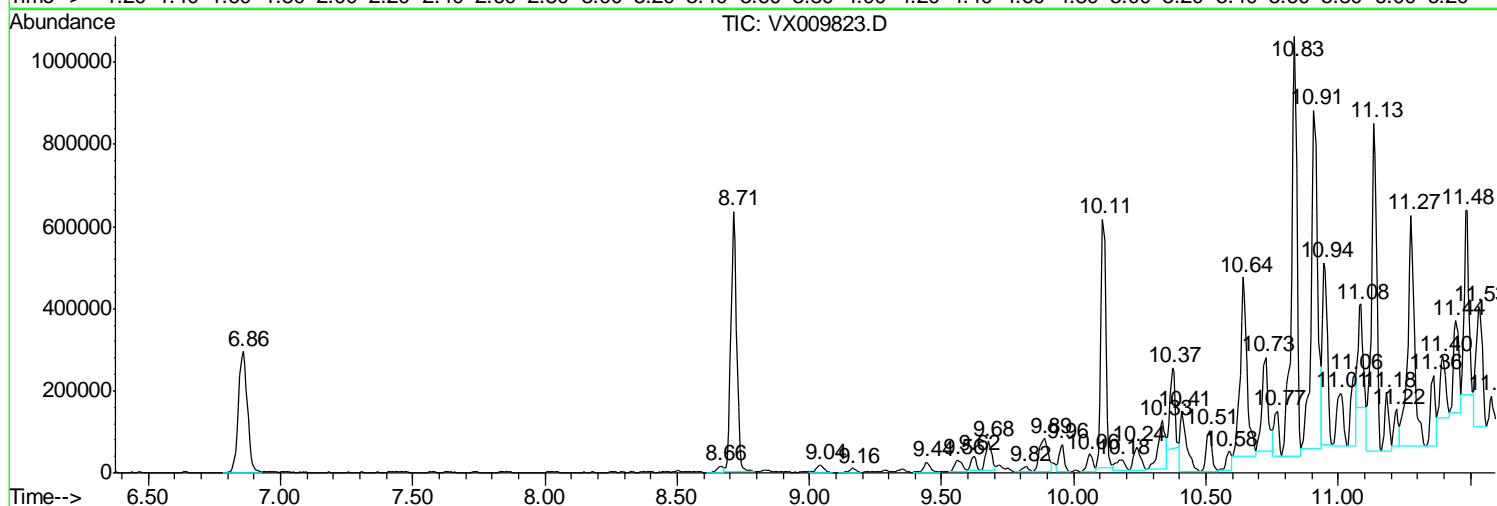
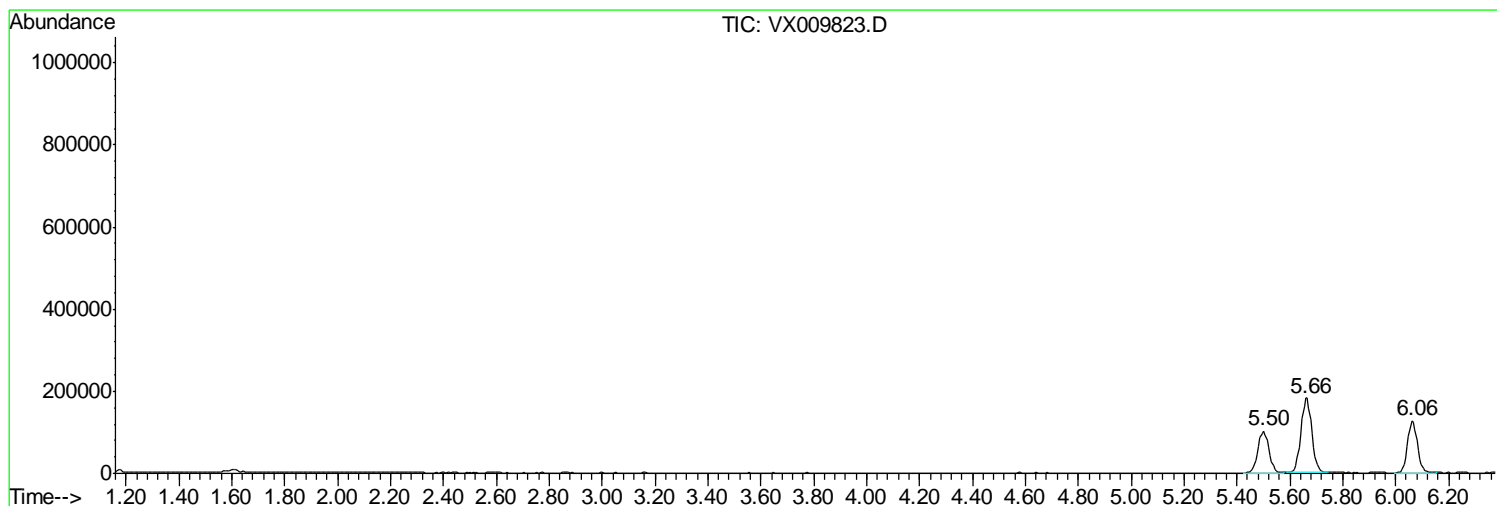
Sum of corrected areas: 25875236

Data Path : Z:\VOASRV\HPCHEM1\MSVOA X\DATA\VX052219\
 Data File : VX009823.D
 Acq On : 22 May 2019 23:44
 Operator : JC/SP
 Sample : K2976-02 50X
 Misc : 5.76µ/5mL/100uL/5.00mL/MSVOA_X/MEOH
 ALS Vial : 35 Sample Multiplier: 1

Instrument :
 MSVOA_X
Client Sampled :
 EP1-SB-E2-3R(17-20)

Quant Method : Z:\VOASRV\HPCHEM1\MSVOA_X\METHOD\82X042919W.M
 Quant Title : SW846 8260

TIC Library : C:\DATABASE\NIST11.L
 TIC Integration Parameters: LSCINT.P



Data Path : Z:\VOASRV\HPCHEM1\MSVOA X\DATA\VX052219\
 Data File : VX009823.D
 Acq On : 22 May 2019 23:44
 Operator : JC/SP
 Sample : K2976-02 50X
 Misc : 5.76µ/5mL/100uL/5.00mL/MSVOA_X/MEOH
 ALS Vial : 35 Sample Multiplier: 1

Instrument :
 MSVOA_X
 ClientSampleID :
 EP1-SB-E2-3R(17-20)

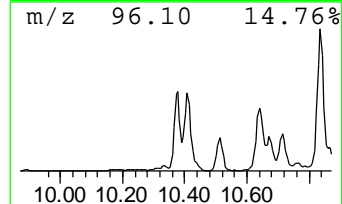
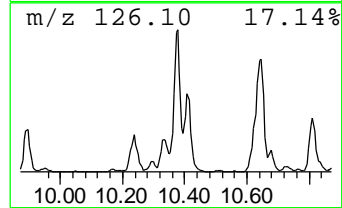
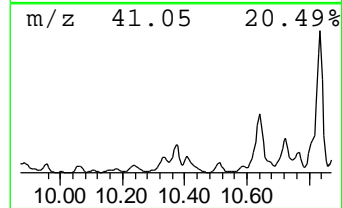
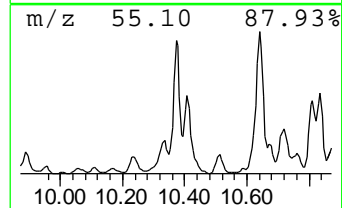
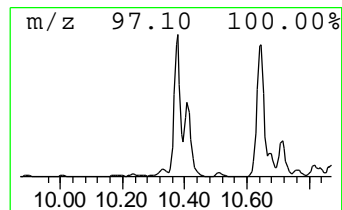
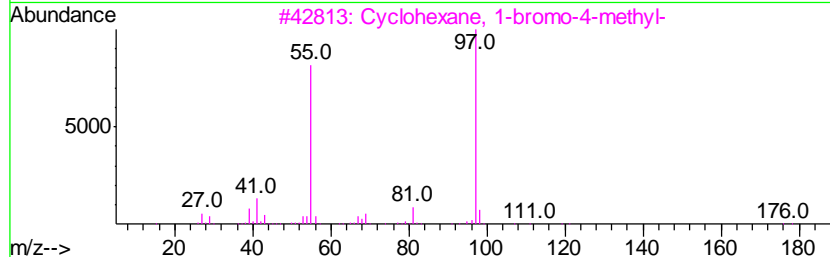
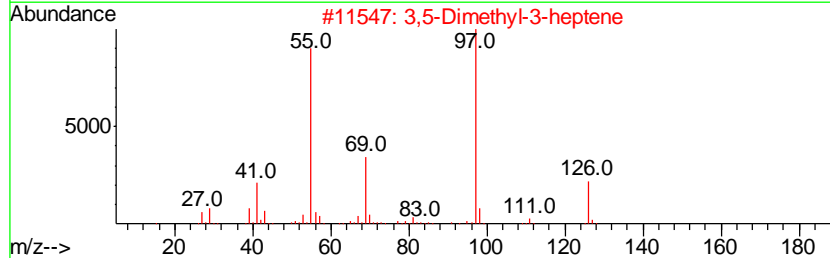
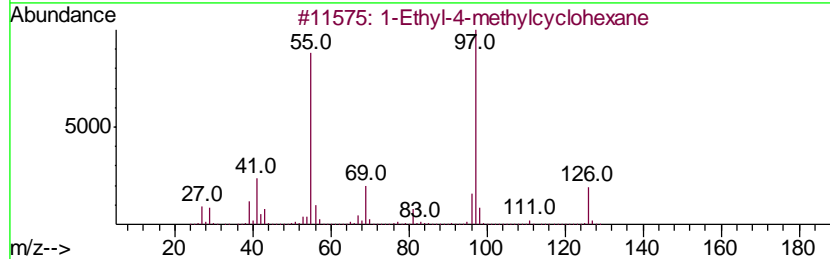
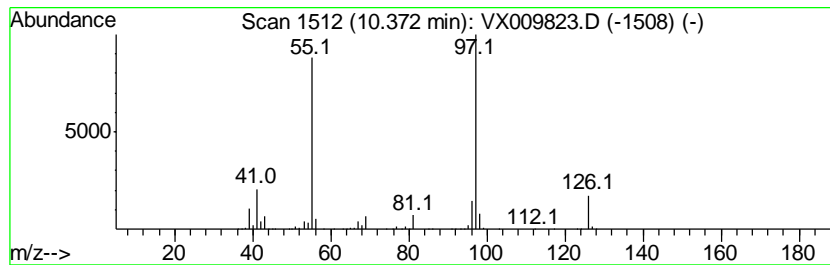
Quant Method : Z:\VOASRV\HPCHEM1\MSVOA_X\METHOD\82X042919W.M
 Quant Title : SW846 8260

TIC Library : C:\DATABASE\NIST11.L
 TIC Integration Parameters: LSCINT.P

 Peak Number 1 1-Ethyl-4-methylcyclohexane Concentration Rank 10

R.T.	EstConc	Area	Relative to ISTD	R.T.
10.37	16.50 ug/l	267248	Chlorobenzene-d5	10.11

Hit#	of	Tentative ID	MW	MolForm	CAS#	Qual
1	5	1-Ethyl-4-methylcyclohexane	126	C9H18	003728-56-1	91
2		3,5-Dimethyl-3-heptene	126	C9H18	059643-68-4	80
3		Cyclohexane, 1-bromo-4-methyl-	176	C7H13Br	006294-40-2	72
4		2-Hexene, 3,4,4-trimethyl-	126	C9H18	053941-19-8	72
5		Cyclohexane, 1-ethyl-2-methyl-, ...	126	C9H18	004923-78-8	64



Data Path : Z:\VOASRV\HPCHEM1\MSVOA X\DATA\VX052219\
 Data File : VX009823.D
 Acq On : 22 May 2019 23:44
 Operator : JC/SP
 Sample : K2976-02 50X
 Misc : 5.76µ/5mL/100uL/5.00mL/MSVOA_X/MEOH
 ALS Vial : 35 Sample Multiplier: 1

Instrument :
 MSVOA_X
 Client Sampled :
 EP1-SB-E2-3R(17-20)

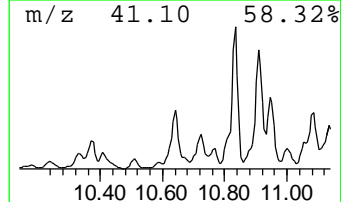
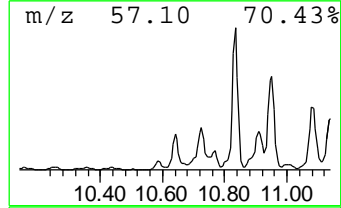
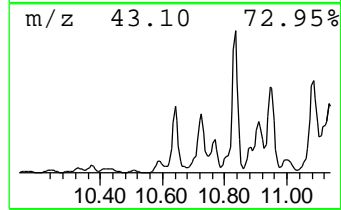
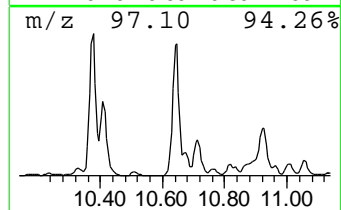
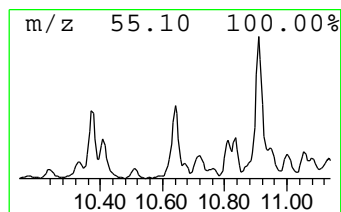
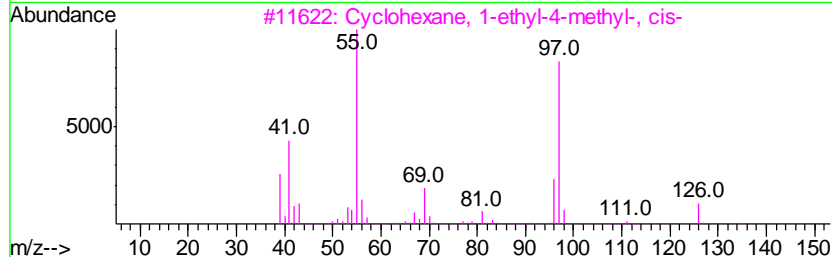
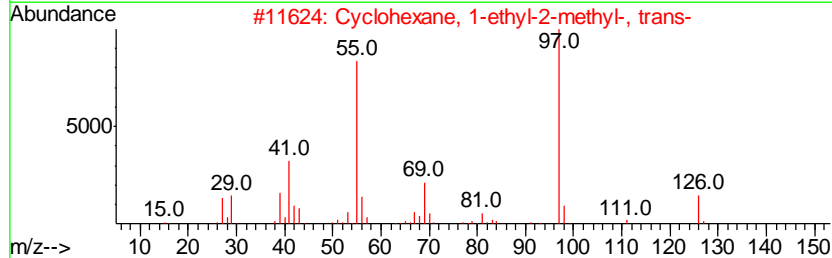
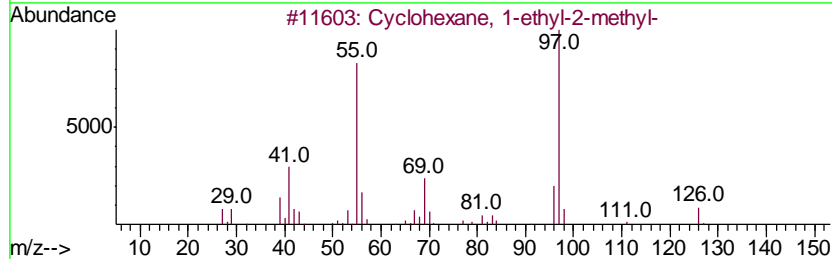
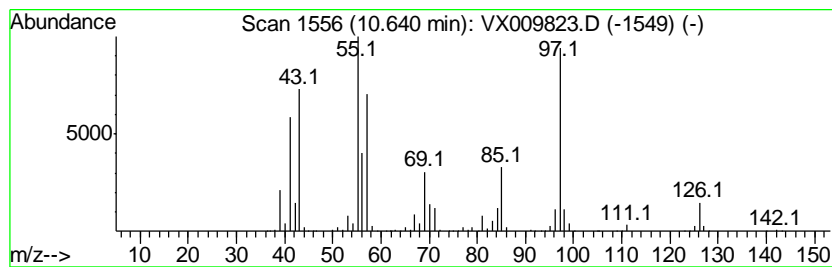
Quant Method : Z:\VOASRV\HPCHEM1\MSVOA_X\METHOD\82X042919W.M
 Quant Title : SW846 8260

TIC Library : C:\DATABASE\NIST11.L
 TIC Integration Parameters: LSCINT.P

 Peak Number 2 Cyclohexane, 1-ethyl-2-methyl- Concentration Rank 3

R.T.	EstConc	Area	Relative to ISTD	R.T.
10.64	48.04 ug/l	777964	Chlorobenzene-d5	10.11

Hit#	of	Tentative ID	MW	MolForm	CAS#	Qual
1	5	Cyclohexane, 1-ethyl-2-methyl-	126	C9H18	003728-54-9	60
2		Cyclohexane, 1-ethyl-2-methyl-, ...	126	C9H18	004923-78-8	53
3		Cyclohexane, 1-ethyl-4-methyl-, ...	126	C9H18	004926-78-7	53
4		3-Heptene, 3-ethyl-	126	C9H18	074764-46-8	52
5		Cyclohexane, 1,3-dimethyl-, cis-	112	C8H16	000638-04-0	50



Data Path : Z:\VOASRV\HPCHEM1\MSVOA X\DATA\VX052219\
 Data File : VX009823.D
 Acq On : 22 May 2019 23:44
 Operator : JC/SP
 Sample : K2976-02 50X
 Misc : 5.76µ/5mL/100uL/5.00mL/MSVOA_X/MEOH
 ALS Vial : 35 Sample Multiplier: 1

Instrument :
 MSVOA_X
 ClientSampleID :
 EP1-SB-E2-3R(17-20)

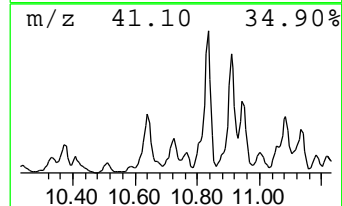
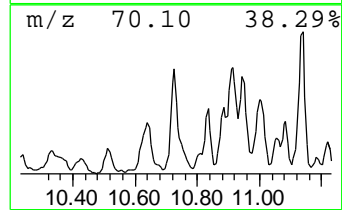
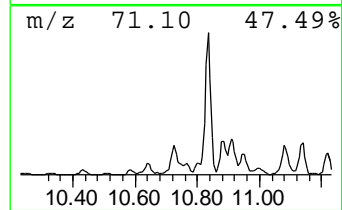
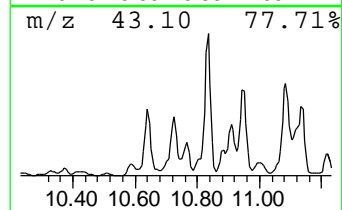
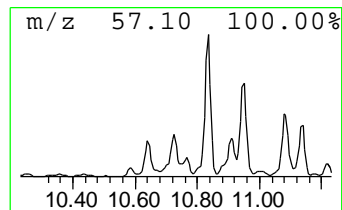
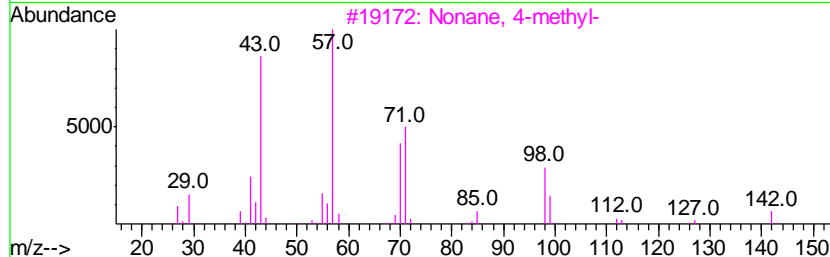
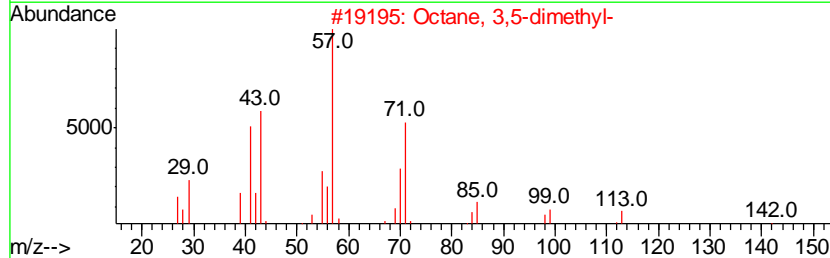
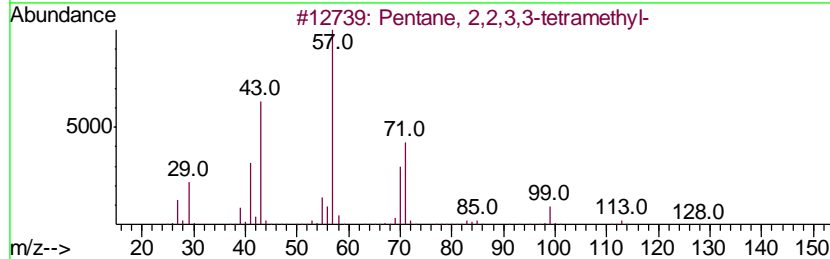
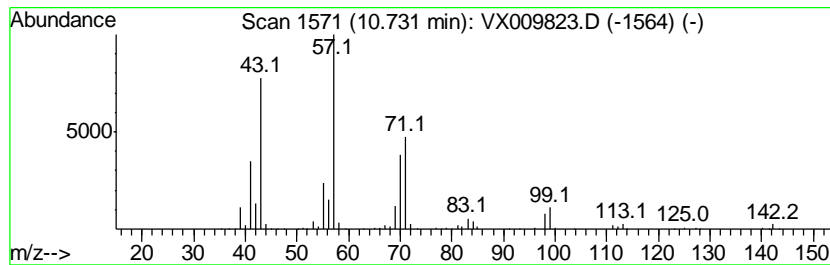
Quant Method : Z:\VOASRV\HPCHEM1\MSVOA_X\METHOD\82X042919W.M
 Quant Title : SW846 8260

TIC Library : C:\DATABASE\NIST11.L
 TIC Integration Parameters: LSCINT.P

 Peak Number 3 Pentane, 2,2,3,3-tetramethyl- Concentration Rank 7

R.T.	EstConc	Area	Relative to ISTD	R.T.
10.73	23.41 ug/l	379197	Chlorobenzene-d5	10.11

Hit#	of	Tentative ID	MW	MolForm	CAS#	Qual
1	5	Pentane, 2,2,3,3-tetramethyl-	128	C9H20	007154-79-2	80
2		Octane, 3,5-dimethyl-	142	C10H22	015869-93-9	72
3		Nonane, 4-methyl-	142	C10H22	017301-94-9	72
4		Octane, 2,5-dimethyl-	142	C10H22	015869-89-3	64
5		Undecane, 4,5-dimethyl-	184	C13H28	017312-79-7	64



Data Path : Z:\VOASRV\HPCHEM1\MSVOA X\DATA\VX052219\
 Data File : VX009823.D
 Acq On : 22 May 2019 23:44
 Operator : JC/SP
 Sample : K2976-02 50X
 Misc : 5.76µ/5mL/100uL/5.00mL/MSVOA_X/MEOH
 ALS Vial : 35 Sample Multiplier: 1

Instrument :
 MSVOA_X
 ClientSampleId :
 EP1-SB-E2-3R(17-20)

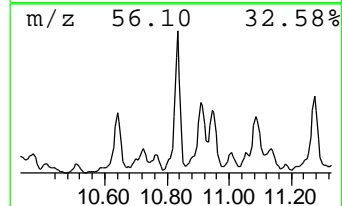
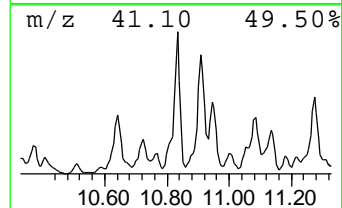
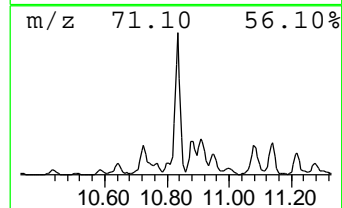
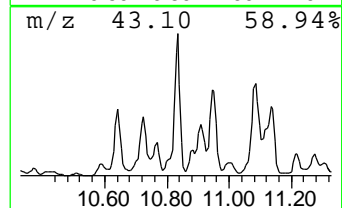
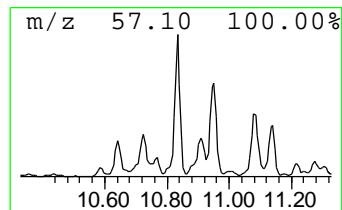
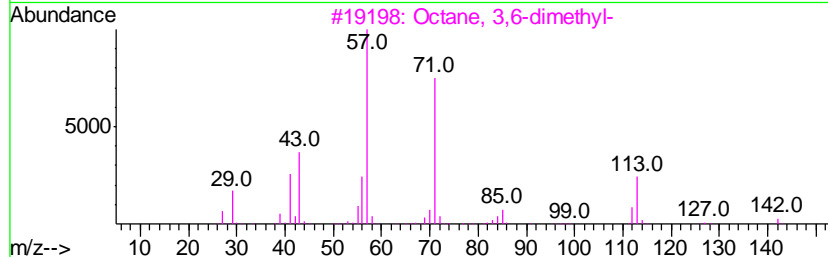
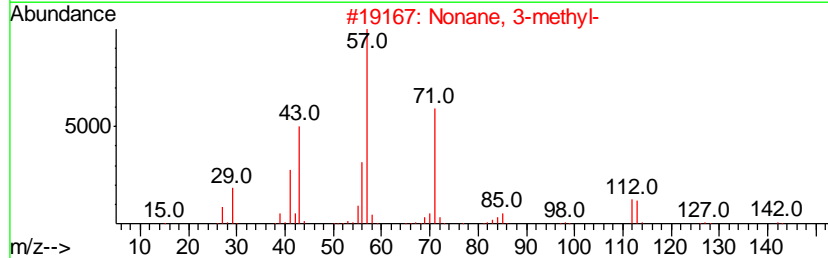
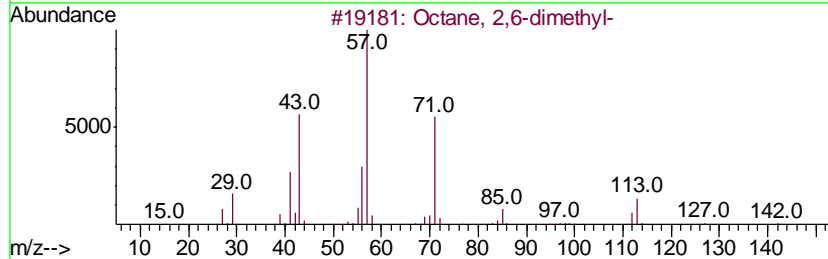
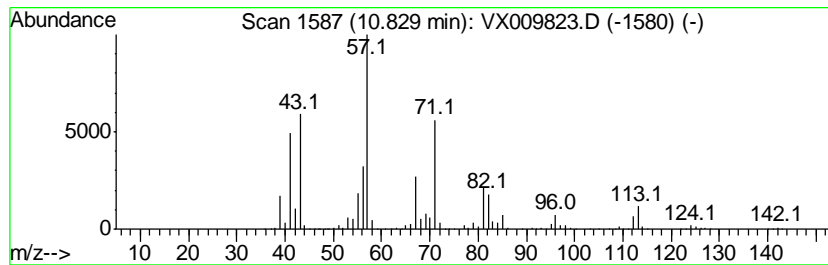
Quant Method : Z:\VOASRV\HPCHEM1\MSVOA_X\METHOD\82X042919W.M
 Quant Title : SW846 8260

TIC Library : C:\DATABASE\NIST11.L
 TIC Integration Parameters: LSCINT.P

 Peak Number 4 Octane, 2,6-dimethyl- Concentration Rank 1

R.T.	EstConc	Area	Relative to ISTD	R.T.
10.83	92.10 ug/l	1491630	Chlorobenzene-d5	10.11

Hit#	of	Tentative ID	MW	MolForm	CAS#	Qual
1	5	Octane, 2,6-dimethyl-	142	C10H22	002051-30-1	94
2		Nonane, 3-methyl-	142	C10H22	005911-04-6	70
3		Octane, 3,6-dimethyl-	142	C10H22	015869-94-0	64
4		Sulfurous acid, 2-ethylhexyl non...	320	C17H36O3S	1000309-19-2	52
5		Sulfurous acid, 2-ethylhexyl hex...	278	C14H30O3S	1000309-20-2	49



Data Path : Z:\VOASRV\HPCHEM1\MSVOA X\DATA\VX052219\
 Data File : VX009823.D
 Acq On : 22 May 2019 23:44
 Operator : JC/SP
 Sample : K2976-02 50X
 Misc : 5.76µ/5mL/100uL/5.00mL/MSVOA_X/MEOH
 ALS Vial : 35 Sample Multiplier: 1

Instrument :
 MSVOA_X
 ClientSampleID :
 EP1-SB-E2-3R(17-20)

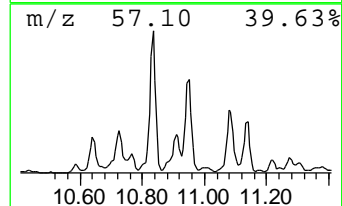
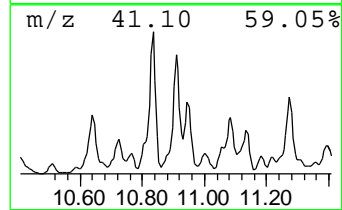
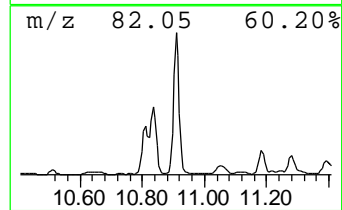
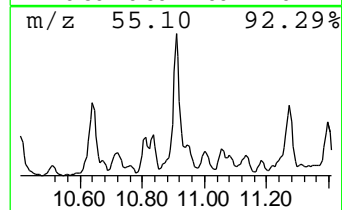
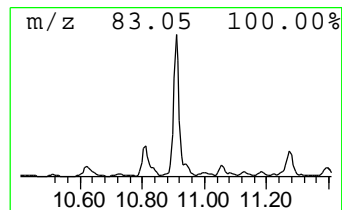
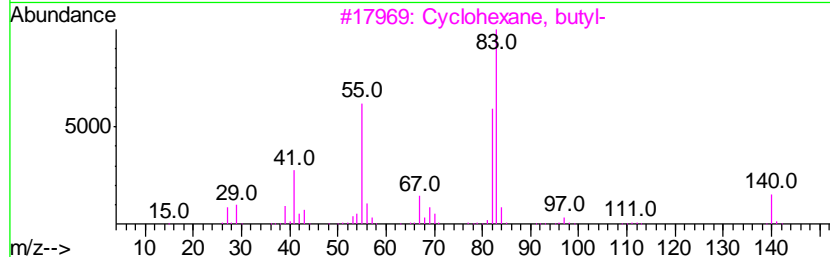
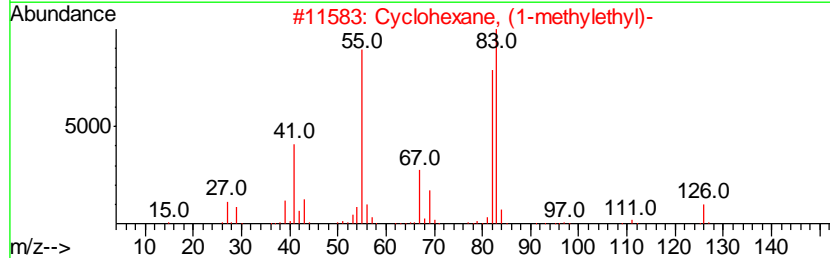
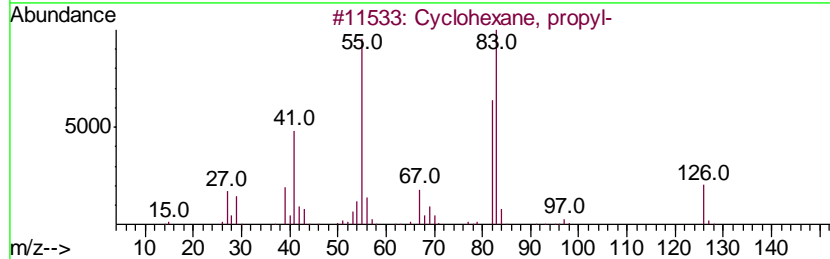
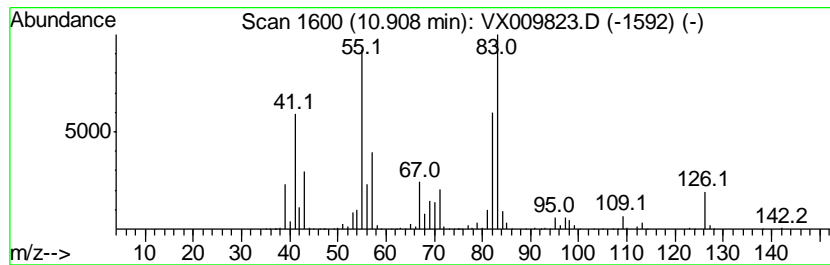
Quant Method : Z:\VOASRV\HPCHEM1\MSVOA_X\METHOD\82X042919W.M
 Quant Title : SW846 8260

TIC Library : C:\DATABASE\NIST11.L
 TIC Integration Parameters: LSCINT.P

 Peak Number 5 Cyclohexane, propyl- Concentration Rank 2

R.T.	EstConc	Area	Relative to ISTD	R.T.
10.91	85.69 ug/l	1387730	Chlorobenzene-d5	10.11

Hit#	of	Tentative ID	MW	MolForm	CAS#	Qual
1	5	Cyclohexane, propyl-	126	C9H18	001678-92-8	81
2		Cyclohexane, (1-methylethyl)-	126	C9H18	000696-29-7	81
3		Cyclohexane, butyl-	140	C10H20	001678-93-9	59
4		Cyclohexane, ethyl-	112	C8H16	001678-91-7	59
5		Cyclohexane, undecyl-	238	C17H34	054105-66-7	59



Data Path : Z:\VOASRV\HPCHEM1\MSVOA X\DATA\VX052219\
 Data File : VX009823.D
 Acq On : 22 May 2019 23:44
 Operator : JC/SP
 Sample : K2976-02 50X
 Misc : 5.76µ/5mL/100uL/5.00mL/MSVOA_X/MEOH
 ALS Vial : 35 Sample Multiplier: 1

Instrument :
 MSVOA_X
 ClientSampled :
 EP1-SB-E2-3R(17-20)

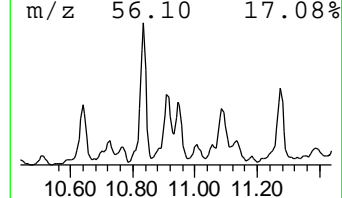
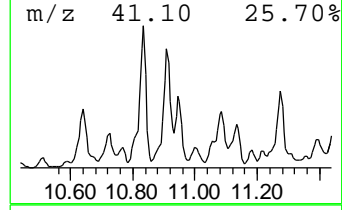
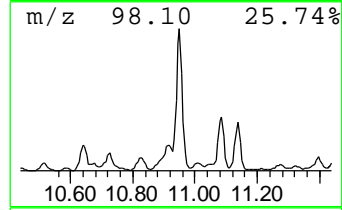
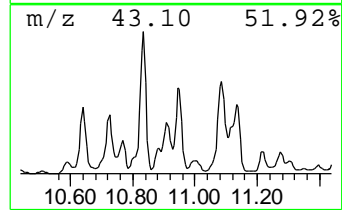
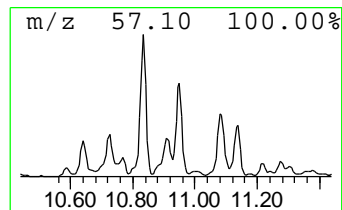
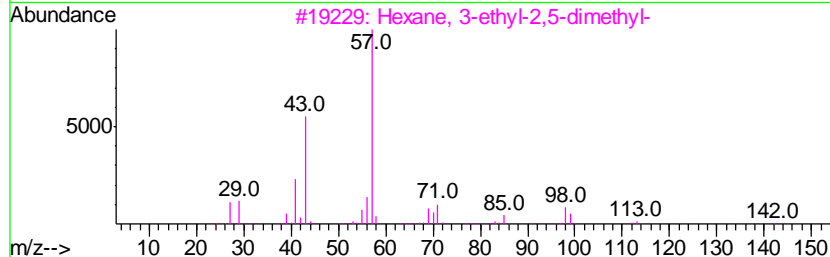
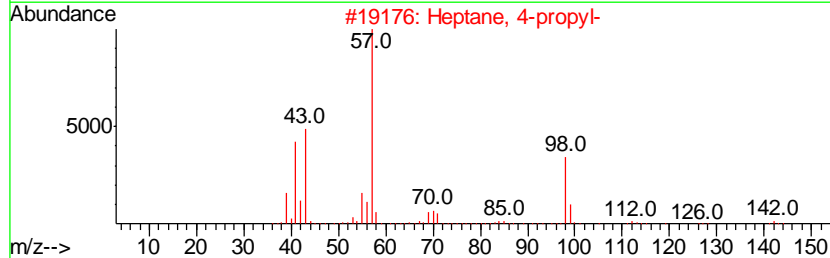
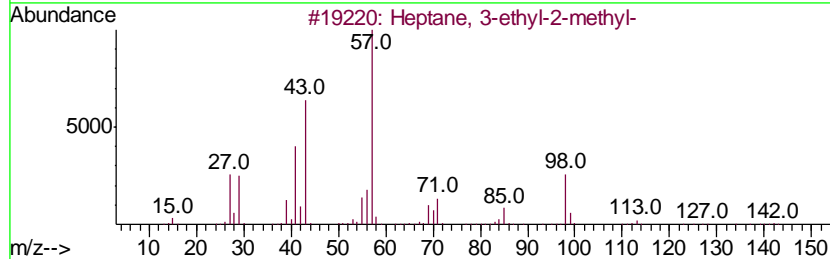
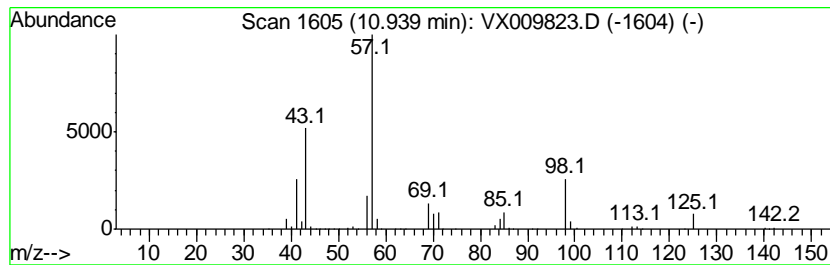
Quant Method : Z:\VOASRV\HPCHEM1\MSVOA_X\METHOD\82X042919W.M
 Quant Title : SW846 8260

TIC Library : C:\DATABASE\NIST11.L
 TIC Integration Parameters: LSCINT.P

 Peak Number 6 Heptane, 3-ethyl-2-methyl- Concentration Rank 5

R.T.	EstConc	Area	Relative to ISTD	R.T.
10.94	35.60 ug/l	576613	Chlorobenzene-d5	10.11

Hit#	of	Tentative ID	MW	MolForm	CAS#	Qual
1	5	Heptane, 3-ethyl-2-methyl-	142	C10H22	014676-29-0	91
2		Heptane, 4-propyl-	142	C10H22	003178-29-8	64
3		Hexane, 3-ethyl-2,5-dimethyl-	142	C10H22	052897-04-8	59
4		Undecane, 6-methyl-	170	C12H26	017302-33-9	50
5		Undecane, 2,6-dimethyl-	184	C13H28	017301-23-4	42



Data Path : Z:\VOASRV\HPCHEM1\MSVOA X\DATA\VX052219\
 Data File : VX009823.D
 Acq On : 22 May 2019 23:44
 Operator : JC/SP
 Sample : K2976-02 50X
 Misc : 5.76µ/5mL/100uL/5.00mL/MSVOA_X/MEOH
 ALS Vial : 35 Sample Multiplier: 1

Instrument :
 MSVOA_X
 ClientSampled :
 EP1-SB-E2-3R(17-20)

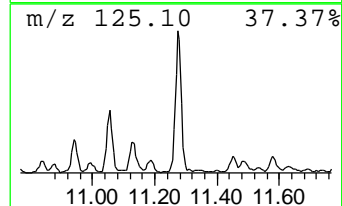
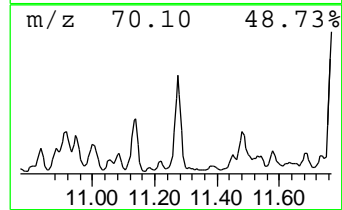
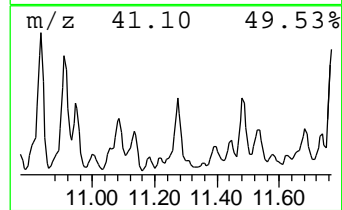
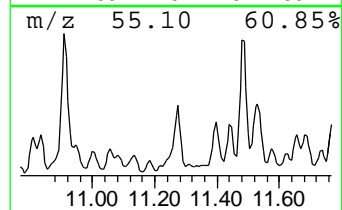
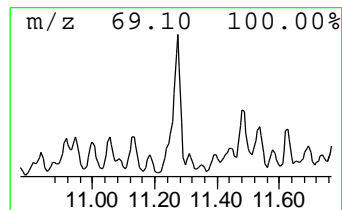
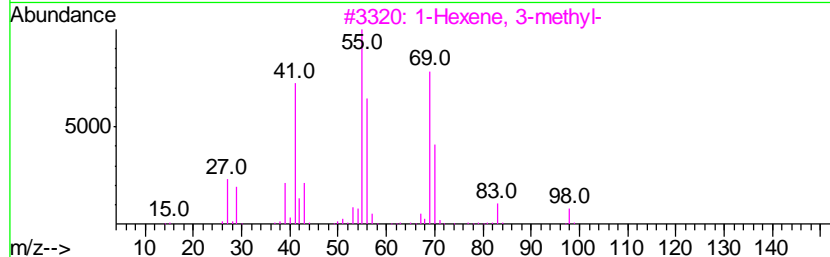
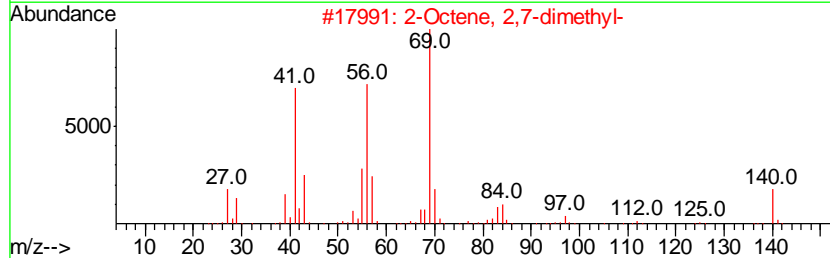
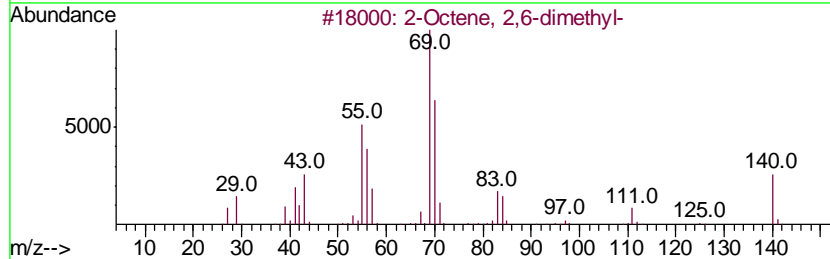
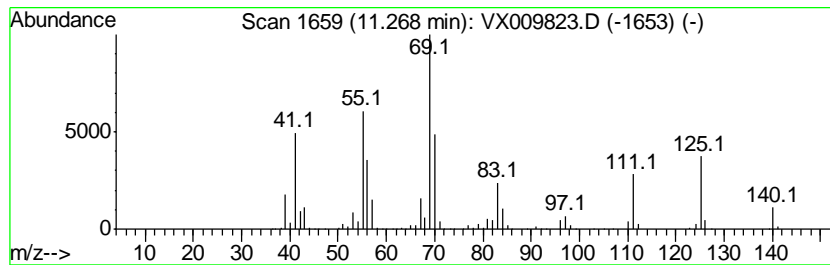
Quant Method : Z:\VOASRV\HPCHEM1\MSVOA_X\METHOD\82X042919W.M
 Quant Title : SW846 8260

TIC Library : C:\DATABASE\NIST11.L
 TIC Integration Parameters: LSCINT.P

 Peak Number 7 2-Octene, 2,6-dimethyl- Concentration Rank 4

R.T.	EstConc	Area	Relative to ISTD	R.T.
11.27	41.53 ug/l	996891	1,4-Dichlorobenzene-d4	12.08

Hit#	of	Tentative ID	MW	MolForm	CAS#	Qual
1	5	2-Octene, 2,6-dimethyl-	140	C10H20	004057-42-5	64
2		2-Octene, 2,7-dimethyl-	140	C10H20	002050-81-9	49
3		1-Hexene, 3-methyl-	98	C7H14	003404-61-3	47
4		2-Nonene, 2-methyl-	140	C10H20	002129-95-5	46
5		3-Ethyl-4-octene	140	C10H20	019781-32-9	45



Data Path : Z:\VOASRV\HPCHEM1\MSVOA X\DATA\VX052219\
 Data File : VX009823.D
 Acq On : 22 May 2019 23:44
 Operator : JC/SP
 Sample : K2976-02 50X
 Misc : 5.76µ/5mL/100uL/5.00mL/MSVOA_X/MEOH
 ALS Vial : 35 Sample Multiplier: 1

Instrument :
 MSVOA_X
 ClientSampled :
 EP1-SB-E2-3R(17-20)

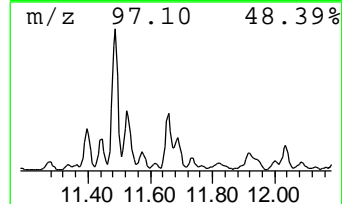
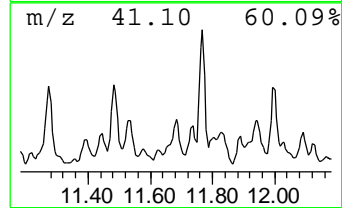
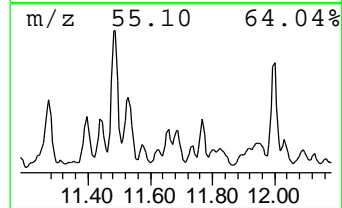
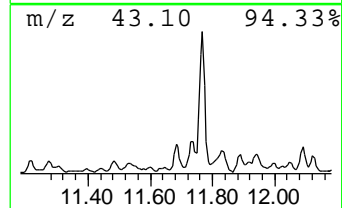
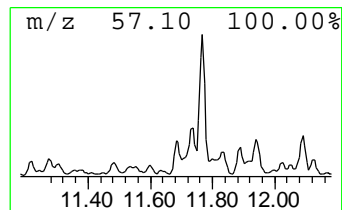
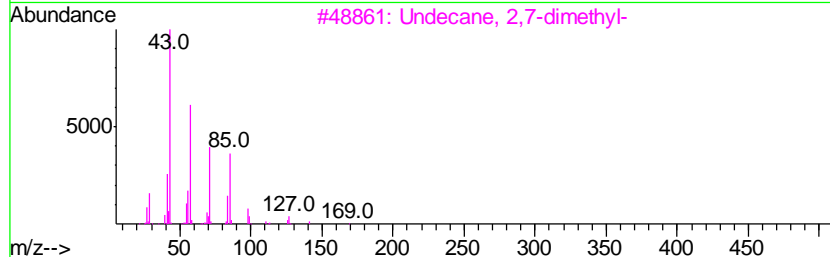
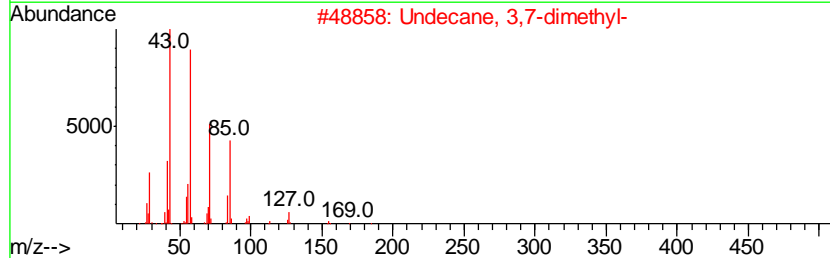
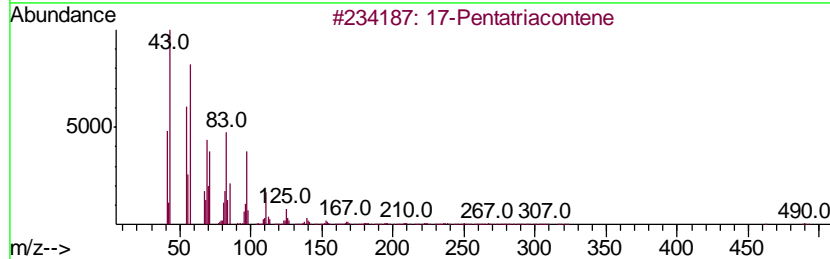
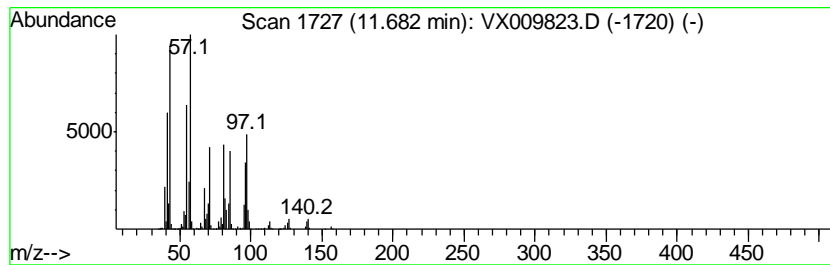
Quant Method : Z:\VOASRV\HPCHEM1\MSVOA_X\METHOD\82X042919W.M
 Quant Title : SW846 8260

TIC Library : C:\DATABASE\NIST11.L
 TIC Integration Parameters: LSCINT.P

 Peak Number 8 17-Pentatriacontene Concentration Rank 8

R.T.	EstConc	Area	Relative to ISTD	R.T.
11.68	21.68 ug/l	520399	1,4-Dichlorobenzene-d4	12.08

Hit#	of	Tentative ID	MW	MolForm	CAS#	Qual
1	5	17-Pentatriacontene	491	C35H70	006971-40-0	80
2		Undecane, 3,7-dimethyl-	184	C13H28	017301-29-0	46
3		Undecane, 2,7-dimethyl-	184	C13H28	017301-24-5	38
4		Decane, 2,4,6-trimethyl-	184	C13H28	062108-27-4	38
5		3-Ethyl-3-methylheptane	142	C10H22	017302-01-1	38



Data Path : Z:\VOASRV\HPCHEM1\MSVOA X\DATA\VX052219\
 Data File : VX009823.D
 Acq On : 22 May 2019 23:44
 Operator : JC/SP
 Sample : K2976-02 50X
 Misc : 5.76µ/5mL/100uL/5.00mL/MSVOA_X/MEOH
 ALS Vial : 35 Sample Multiplier: 1

Instrument :
 MSVOA_X
 ClientSampleId :
 EP1-SB-E2-3R(17-20)

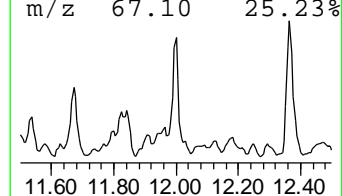
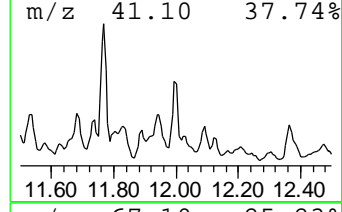
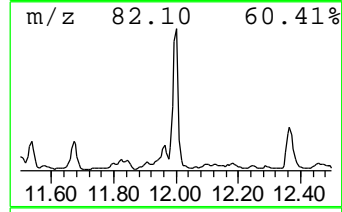
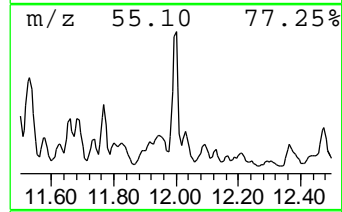
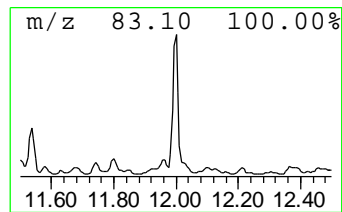
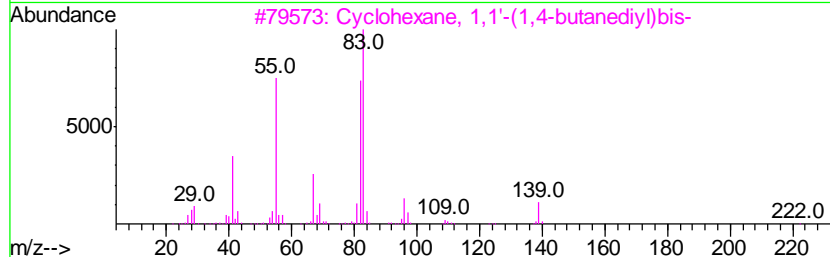
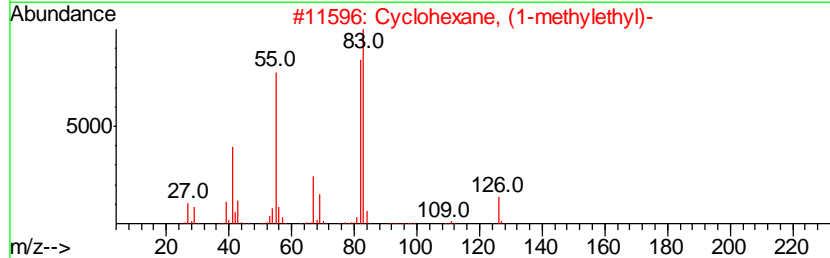
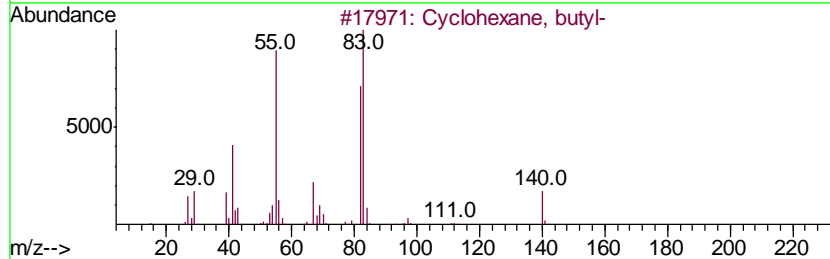
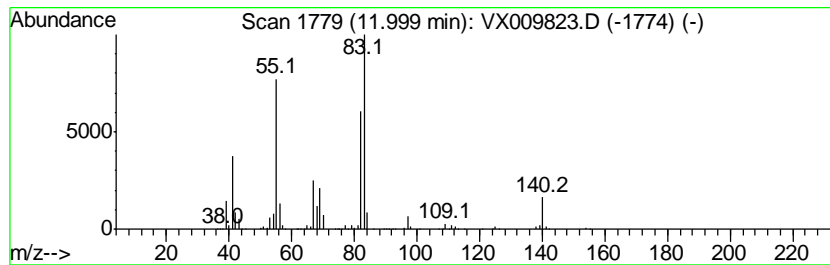
Quant Method : Z:\VOASRV\HPCHEM1\MSVOA_X\METHOD\82X042919W.M
 Quant Title : SW846 8260

TIC Library : C:\DATABASE\NIST11.L
 TIC Integration Parameters: LSCINT.P

 Peak Number 9 Cyclohexane, butyl- Concentration Rank 6

R.T.	EstConc	Area	Relative to ISTD	R.T.
12.00	34.41 ug/l	825920	1,4-Dichlorobenzene-d4	12.08

Hit#	of	Tentative ID	MW	MolForm	CAS#	Qual
1	5	Cyclohexane, butyl-	140	C10H20	001678-93-9	91
2		Cyclohexane, (1-methylethyl)-	126	C9H18	000696-29-7	72
3		Cyclohexane, 1,1'-(1,4-butanediyl)bis-	222	C16H30	006165-44-2	72
4		Cyclohexane, ethyl-	112	C8H16	001678-91-7	64
5		Cyclohexane, octyl-	196	C14H28	001795-15-9	64



Data Path : Z:\VOASRV\HPCHEM1\MSVOA X\DATA\VX052219\
 Data File : VX009823.D
 Acq On : 22 May 2019 23:44
 Operator : JC/SP
 Sample : K2976-02 50X
 Misc : 5.76µ/5mL/100uL/5.00mL/MSVOA_X/MEOH
 ALS Vial : 35 Sample Multiplier: 1

Instrument :
 MSVOA_X
 Client Sampled :
 EP1-SB-E2-3R(17-20)

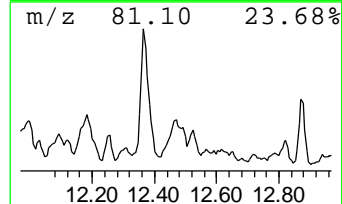
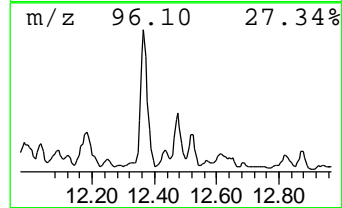
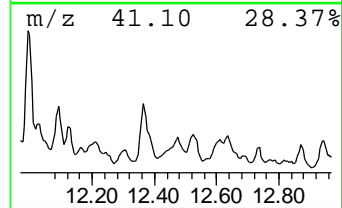
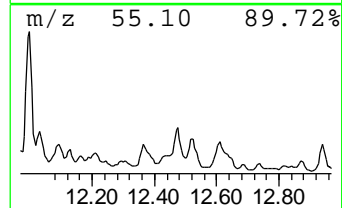
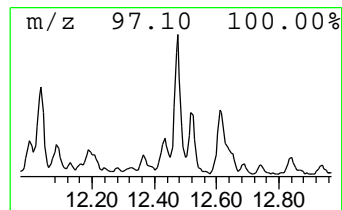
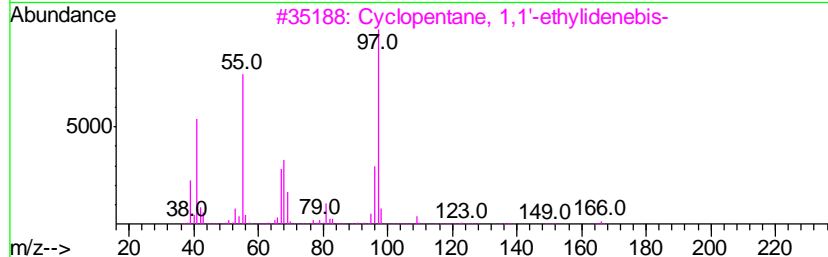
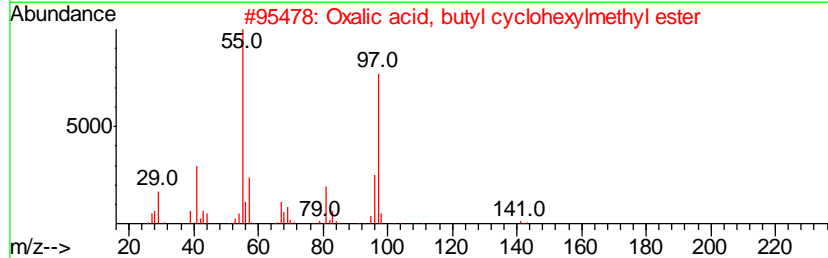
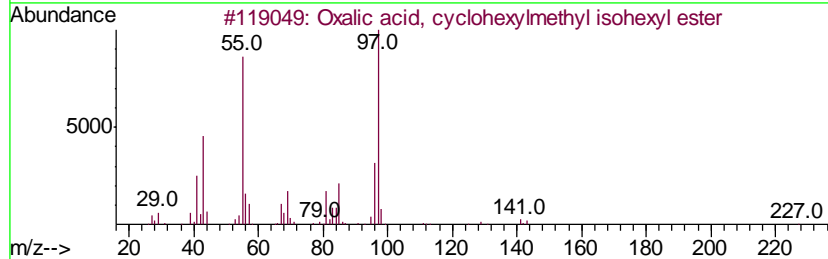
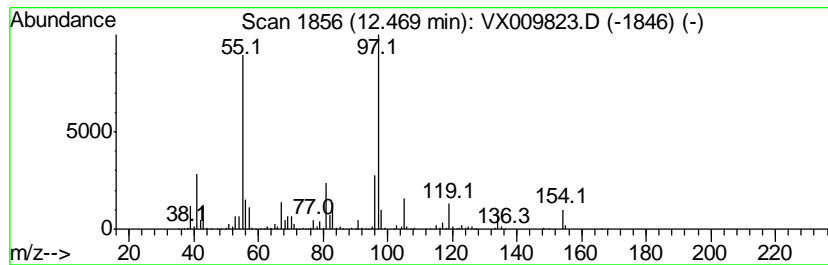
Quant Method : Z:\VOASRV\HPCHEM1\MSVOA_X\METHOD\82X042919W.M
 Quant Title : SW846 8260

TIC Library : C:\DATABASE\NIST11.L
 TIC Integration Parameters: LSCINT.P

 Peak Number 10 Oxalic acid, cyclohexylmeth... Concentration Rank 9

R.T.	EstConc	Area	Relative to ISTD	R.T.
12.47	19.19 ug/l	460540	1,4-Dichlorobenzene-d4	12.08

Hit#	of	Tentative ID	MW	MolForm	CAS#	Qual
1	5	Oxalic acid, cyclohexylmethyl is...	270	C15H26O4	1000309-68-3	64
2		Oxalic acid, butyl cyclohexylmet...	242	C13H22O4	1000309-68-2	64
3		Cyclopentane, 1,1'-ethylidenebis-	166	C12H22	004413-21-2	59
4		1-Ethyl-3-methylcyclohexane (c,t)	126	C9H18	003728-55-0	59
5		Cyclohexane, 1-methyl-3-propyl-	140	C10H20	004291-80-9	59



Data Path : Z:\VOASRV\HPCHEM1\MSVOA_X\DATA\VX052219\
Data File : VX009823.D
Acq On : 22 May 2019 23:44
Operator : JC/SP
Sample : K2976-02 50X
Misc : 5.76g/5mL/100uL/5.00mL/MSVOA_X/MEOH
ALS Vial : 35 Sample Multiplier: 1

Instrument :
MSVOA_X
ClientSampleId :
EP1-SB-E2-3R(17-20)

Quant Method : Z:\VOASRV\HPCHEM1\MSVOA_X\METHOD\82X042919W.M
Quant Title : SW846 8260

TIC Library : C:\DATABASE\NIST11.L
TIC Integration Parameters: LSCINT.P

TIC Top Hit name	RT	EstConc	Units	Response	--Internal Standard--			
					#	RT	Resp	Conc
1-Ethyl-4-methylc...	10.37	16.5	ug/l	267248	3	10.11	809765	50.0
Cyclohexane, 1-et...	10.64	48.0	ug/l	777964	3	10.11	809765	50.0
Pentane, 2,2,3,3-...	10.73	23.4	ug/l	379197	3	10.11	809765	50.0
Octane, 2,6-dimet...	10.83	92.1	ug/l	1491630	3	10.11	809765	50.0
Cyclohexane, propyl-	10.91	85.7	ug/l	1387730	3	10.11	809765	50.0
Heptane, 3-ethyl-...	10.94	35.6	ug/l	576613	3	10.11	809765	50.0
2-Octene, 2,6-dim...	11.27	41.5	ug/l	996891	4	12.08	1200220	50.0
17-Pentatriacontene	11.68	21.7	ug/l	520399	4	12.08	1200220	50.0
Cyclohexane, butyl-	12.00	34.4	ug/l	825920	4	12.08	1200220	50.0
Oxalic acid, cycl...	12.47	19.2	ug/l	460540	4	12.08	1200220	50.0