

Data Path : Z:\VOASRV\HPCHEM1\MSVOA X\DATA\VOX052319\
 Data File : VX009872.D
 Acq On : 23 May 2019 20:35
 Operator : JC/SP
 Sample : K3000-04
 Misc : 5.0mL/MSVOA X/WATER
 ALS Vial : 27 Sample Multiplier: 1

Instrument :
 MSVOA_X
 ClientSampleId :

Quant Time: May 24 03:55:13 2019
 Quant Method : Z:\VOASRV\HPCHEM1\MSVOA_X\METHOD\82X042919W.M
 Quant Title : SW846 8260
 QLast Update : Thu May 09 07:31:15 2019
 Response via : Initial Calibration

Internal Standards	R.T.	QIon	Response	Conc	Units	Dev(Min)
1) Pentafluorobenzene	5.67	168	181448	50.00	ug/l	0.00
34) 1,4-Difluorobenzene	6.86	114	293087	50.00	ug/l	0.00
63) Chlorobenzene-d5	10.11	117	261863	50.00	ug/l	0.00
72) 1,4-Dichlorobenzene-d4	12.08	152	113783	50.00	ug/l	0.00

System Monitoring Compounds

33) 1,2-Dichloroethane-d4	6.06	65	125195	50.54	ug/l	0.00
Spiked Amount	50.000		Recovery	=	101.08%	
35) Dibromofluoromethane	5.50	113	89608	48.63	ug/l	0.00
Spiked Amount	50.000		Recovery	=	97.26%	
50) Toluene-d8	8.71	98	371679	49.97	ug/l	0.00
Spiked Amount	50.000		Recovery	=	99.94%	
62) 4-Bromofluorobenzene	11.13	95	126249	46.71	ug/l	0.00
Spiked Amount	50.000		Recovery	=	93.42%	

Target Compounds

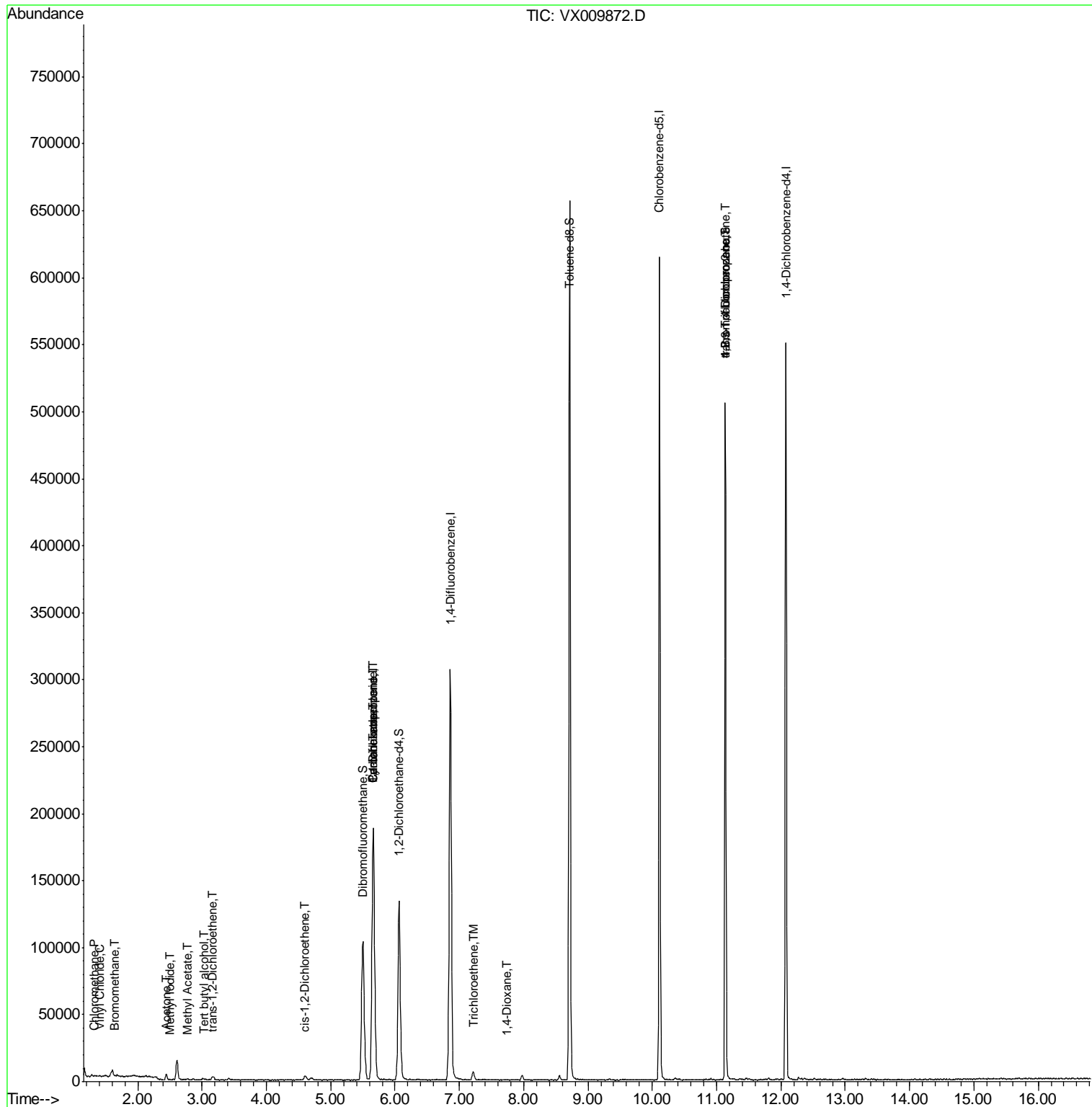
						Qvalue
3) Chloromethane	1.32	50	518	0.227	ug/l #	86
4) Vinyl Chloride	1.41	62	680	0.305	ug/l #	88
5) Bromomethane	1.64	94	281	0.210	ug/l	81
10) Methyl Iodide	2.51	142	73	4.627	ug/l #	42
11) Tert butyl alcohol	3.03	59	1050	1.831	ug/l #	88
16) Acetone	2.44	43	4832	3.633	ug/l	93
18) Methyl Acetate	2.78	43	1025	0.324	ug/l	97
21) trans-1,2-Dichloroethene	3.17	96	1073	0.581	ug/l #	90
27) cis-1,2-Dichloroethene	4.60	96	1574	0.714	ug/l	94
28) Bromochloromethane	5.02	49	25	Below Cal	#	20
31) Cyclohexane	5.66	56	4337	1.184	ug/l #	1
36) 1,1-Dichloropropene	5.67	75	14350	5.269	ug/l #	50
38) Carbon Tetrachloride	5.66	117	17473	7.061	ug/l #	15
44) Trichloroethene	7.21	130	2297	1.127	ug/l	92
49) 1,4-Dioxane	7.74	88	22	0.360	ug/l #	1
76) 1,2,3-Trichloropropane	11.13	75	65334	24.754	ug/l #	34
81) trans-1,4-Dichloro-2-buten	11.13	75	65334	63.336	ug/l #	10

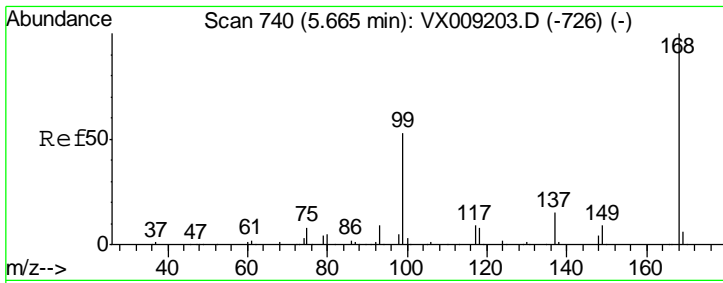
(#) = qualifier out of range (m) = manual integration (+) = signals summed

Data Path : Z:\VOASRV\HPCHEM1\MSVOA X\DATA\VX052319\
 Data File : VX009872.D
 Acq On : 23 May 2019 20:35
 Operator : JC/SP
 Sample : K3000-04
 Misc : 5.0mL/MSVOA X/WATER
 ALS Vial : 27 Sample Multiplier: 1

Instrument :
 MSVOA_X
 Client Sampled :

Quant Time: May 24 03:55:13 2019
 Quant Method : Z:\VOASRV\HPCHEM1\MSVOA_X\METHOD\82X042919W.M
 Quant Title : SW846 8260
 QLast Update : Thu May 09 07:31:15 2019
 Response via : Initial Calibration

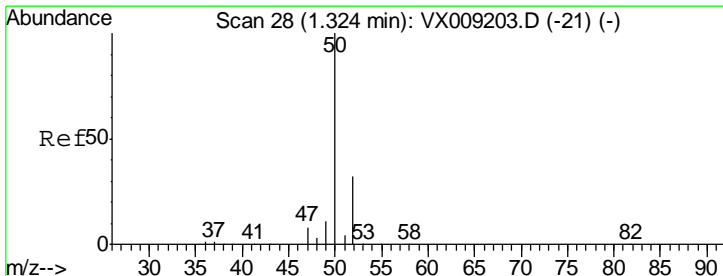
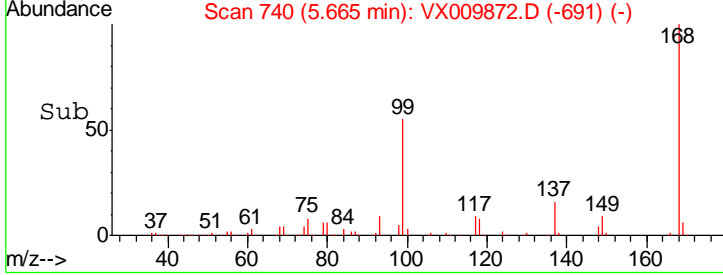
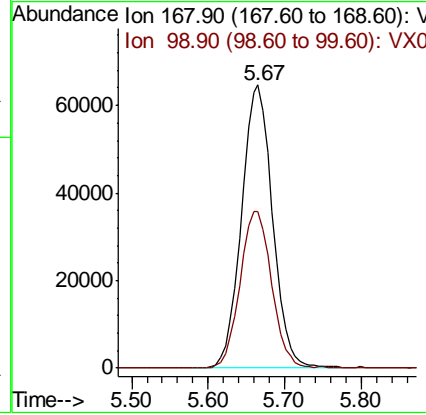
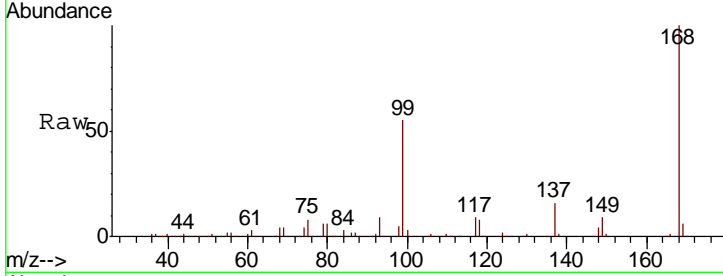




#1
 Pentafluorobenzene
 Concen: 50.000 ug/l
 RT: 5.67 min Scan# 740
 Delta R.T. 0.00 min
 Lab File: VX009872.D
 Acq: 23 May 2019 20:35

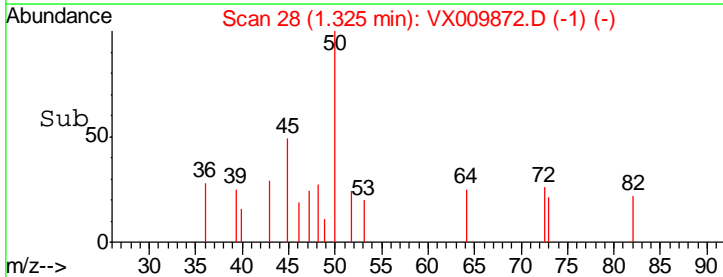
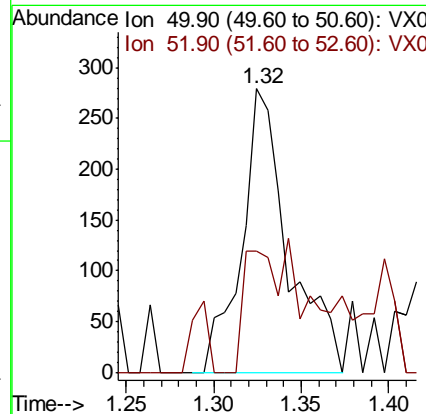
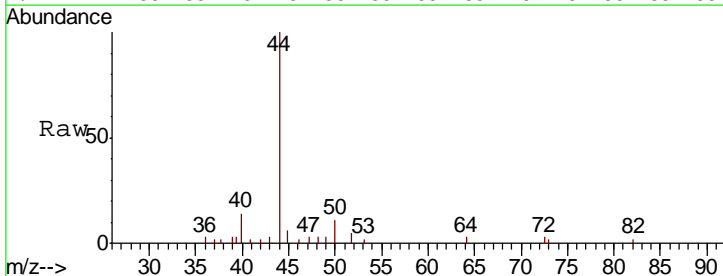
Instrument : MSVOA_X
 ClientSampled :

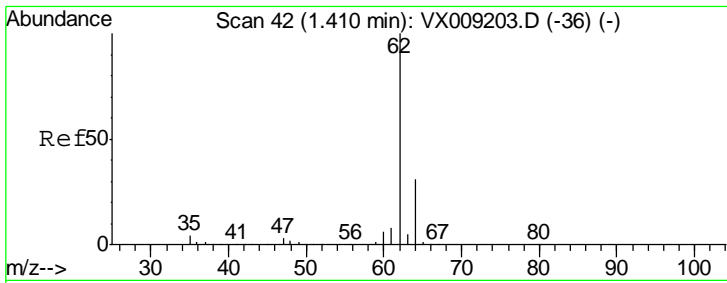
Tot Ion: 168 Resp: 181448
 Ion Ratio Lower Upper
 168 100
 99 55.2 42.3 63.5



#3
 Chloromethane
 Concen: 0.227 ug/l
 RT: 1.32 min Scan# 28
 Delta R.T. 0.00 min
 Lab File: VX009872.D
 Acq: 23 May 2019 20:35

Tgt Ion: 50 Resp: 518
 Ion Ratio Lower Upper
 50 100
 52 24.7 25.9 38.9#

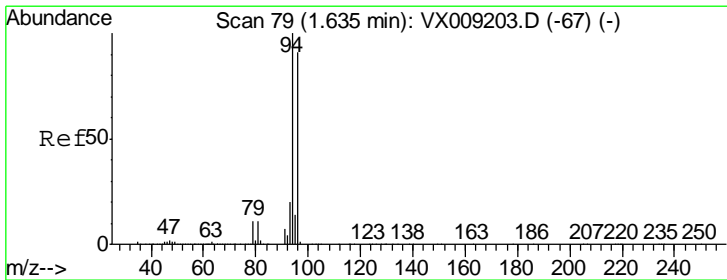
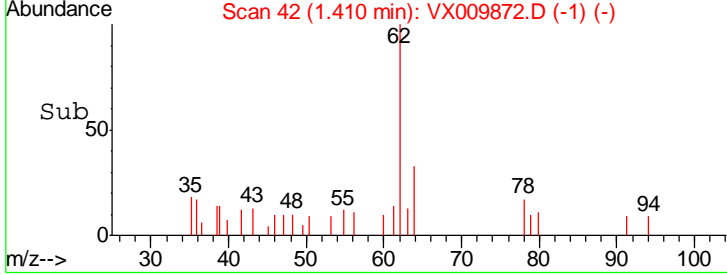
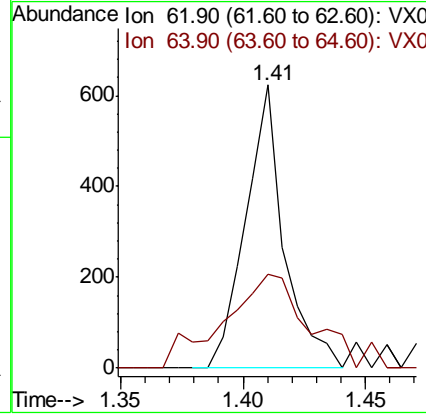
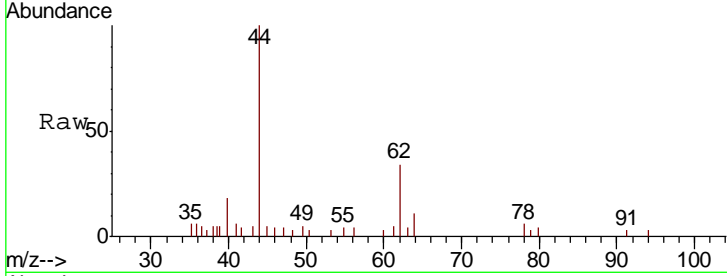




#4
 Vinyl Chloride
 Concen: 0.305 ug/l
 RT: 1.41 min Scan# 42
 Delta R.T. 0.00 min
 Lab File: VX009872.D
 Acq: 23 May 2019 20:35

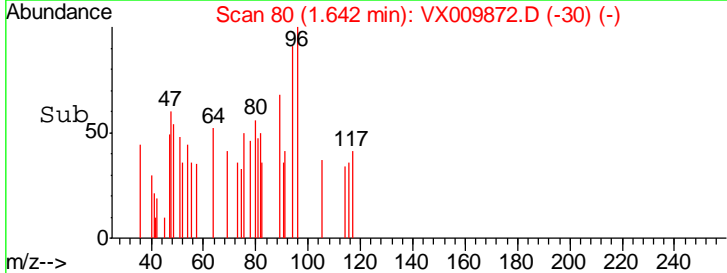
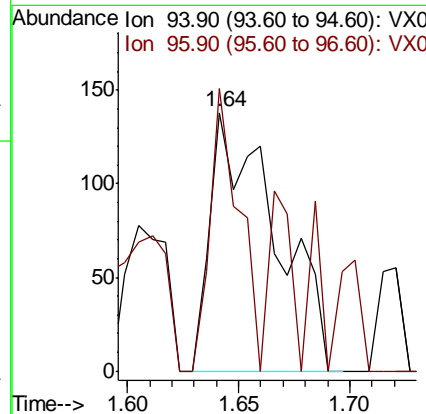
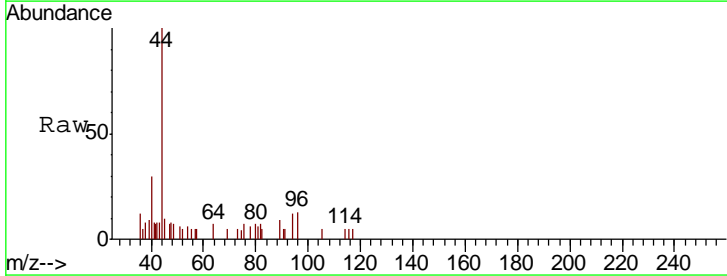
Instrument :
 MSVOA_X
 ClientSampled :

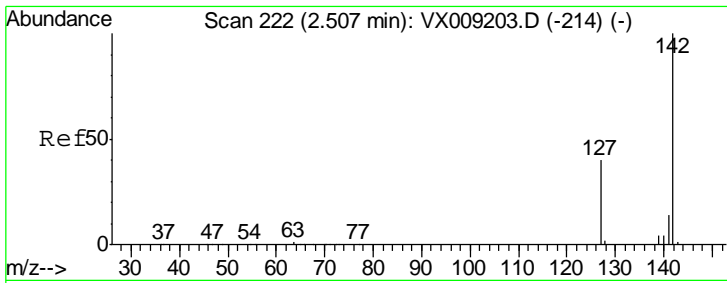
Tgt Ion: 62 Resp: 680
 Ion Ratio Lower Upper
 62 100
 64 23.9 24.6 36.8#



#5
 Bromomethane
 Concen: 0.210 ug/l
 RT: 1.64 min Scan# 80
 Delta R.T. 0.01 min
 Lab File: VX009872.D
 Acq: 23 May 2019 20:35

Tgt Ion: 94 Resp: 281
 Ion Ratio Lower Upper
 94 100
 96 109.4 73.0 109.6

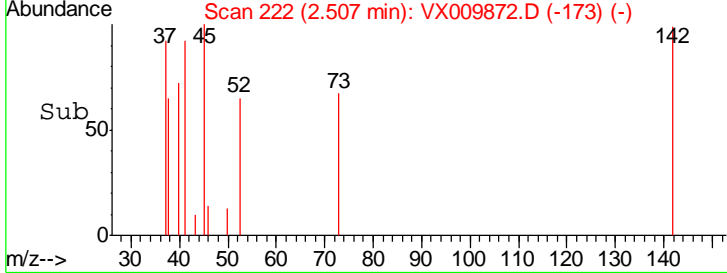
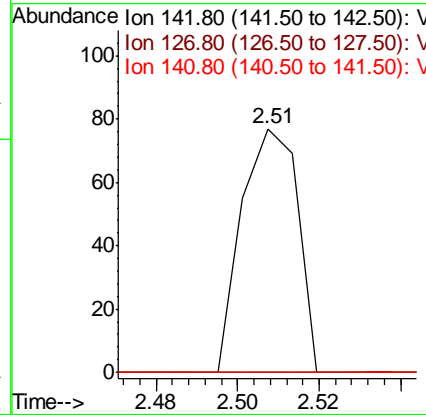
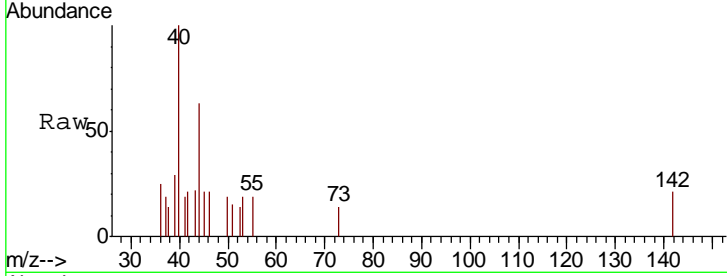




#10
 Methyl Iodide
 Concen: 4.627 ug/l
 RT: 2.51 min Scan# 222
 Delta R.T. 0.00 min
 Lab File: VX009872.D
 Acq: 23 May 2019 20:35

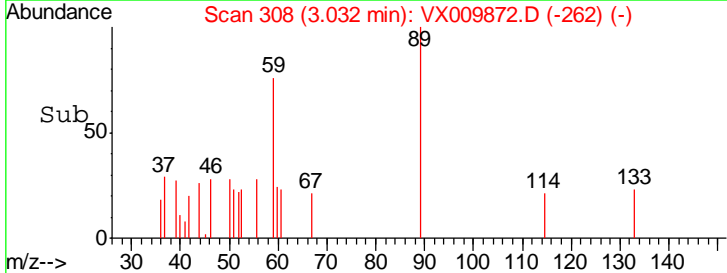
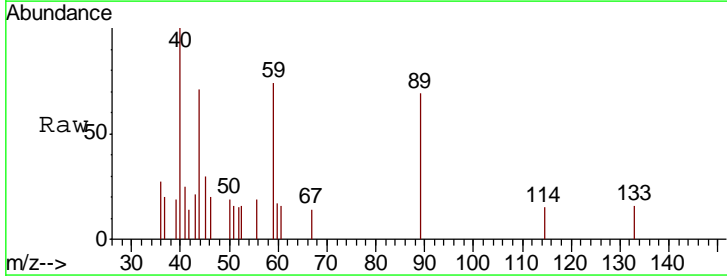
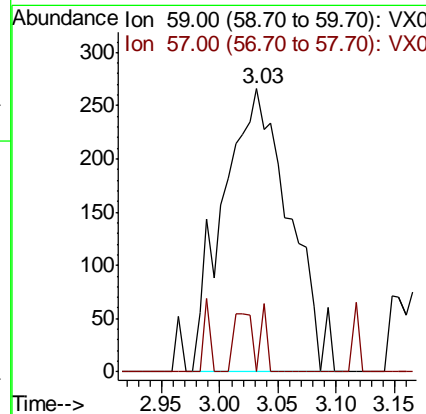
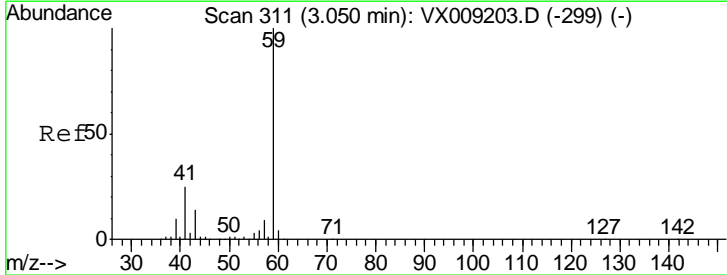
Instrument :
 MSVOA_X
 ClientSampled :

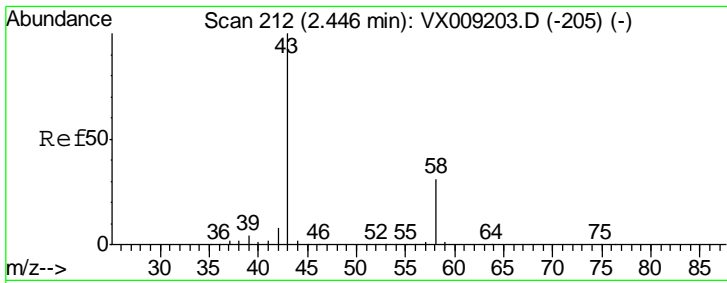
Tgt Ion	Resp	Lower	Upper
142	100		
127	0.0	32.7	49.1#
141	0.0	11.5	17.3#



#11
 Tert butyl alcohol
 Concen: 1.831 ug/l
 RT: 3.03 min Scan# 308
 Delta R.T. -0.02 min
 Lab File: VX009872.D
 Acq: 23 May 2019 20:35

Tgt Ion	Resp	Lower	Upper
59	100		
57	5.6	8.2	12.2#

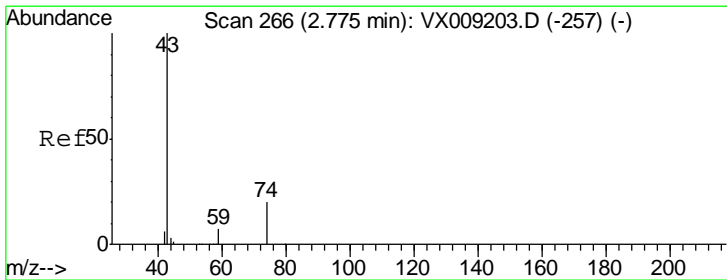
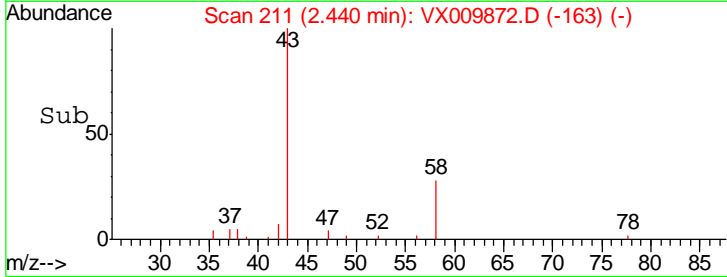
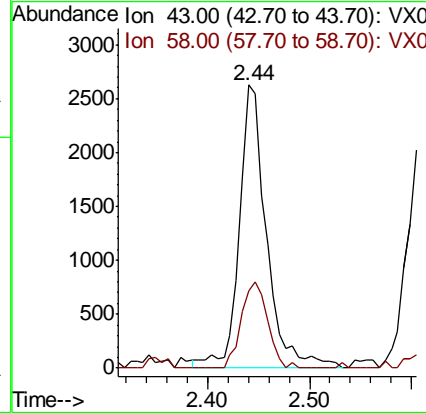
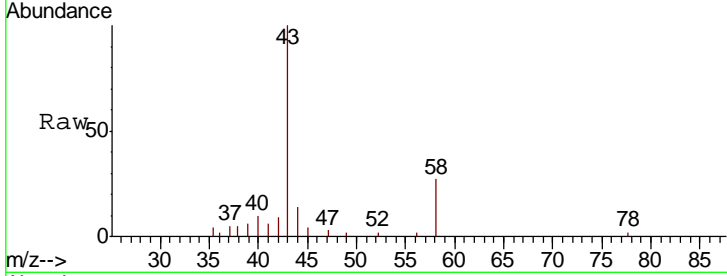




#16
 Acetone
 Concen: 3.633 ug/l
 RT: 2.44 min Scan# 211
 Delta R.T. -0.01 min
 Lab File: VX009872.D
 Acq: 23 May 2019 20:35

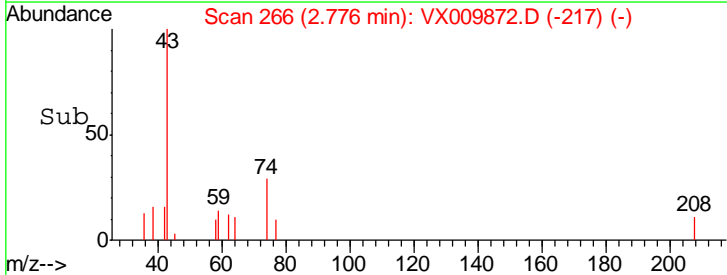
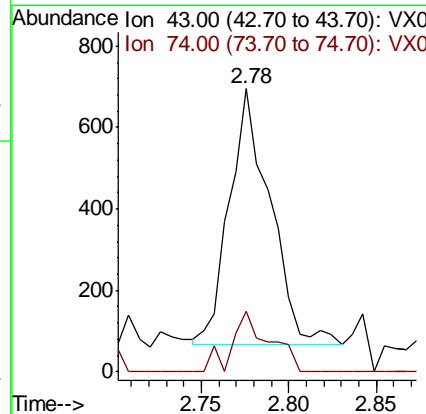
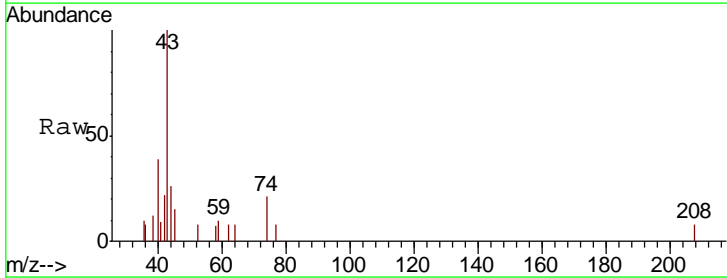
Instrument :
 MSVOA_X
 ClientSampled :

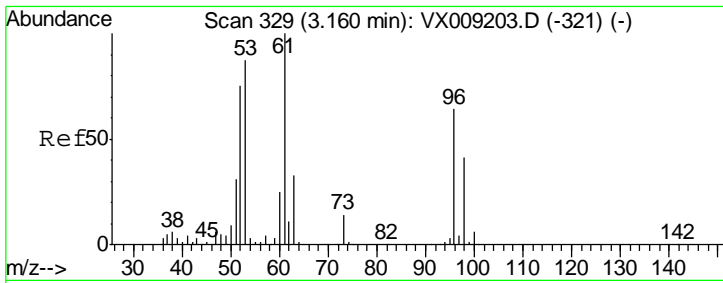
Tgt Ion	43	58	Resp	4832
Ion Ratio	100	27.5	Lower	Upper
			24.9	37.3



#18
 Methyl Acetate
 Concen: 0.324 ug/l
 RT: 2.78 min Scan# 266
 Delta R.T. 0.00 min
 Lab File: VX009872.D
 Acq: 23 May 2019 20:35

Tgt Ion	43	74	Resp	1025
Ion Ratio	100	21.5	Lower	Upper
			16.2	24.4

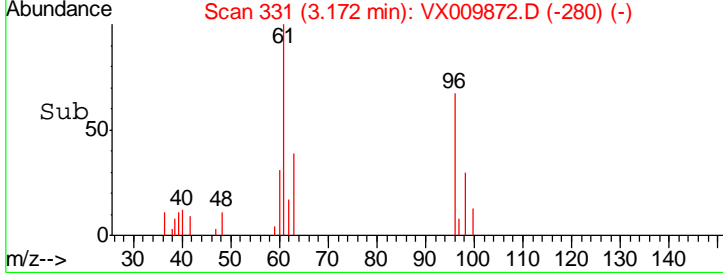
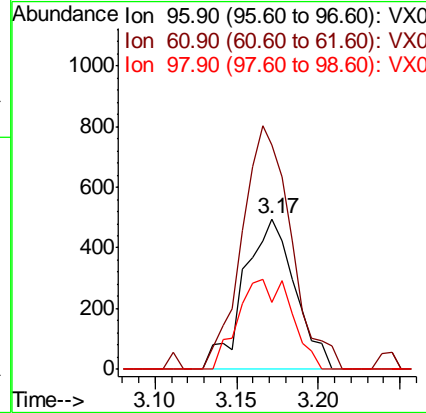
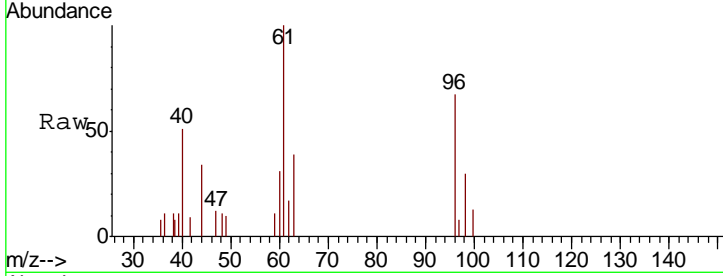




#21
 trans-1,2-Dichloroethene
 Concen: 0.581 ug/l
 RT: 3.17 min Scan# 331
 Delta R.T. 0.01 min
 Lab File: VX009872.D
 Acq: 23 May 2019 20:35

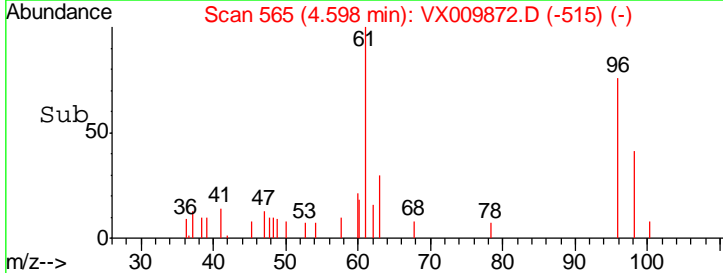
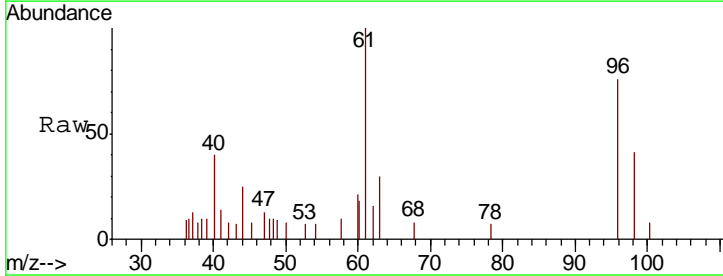
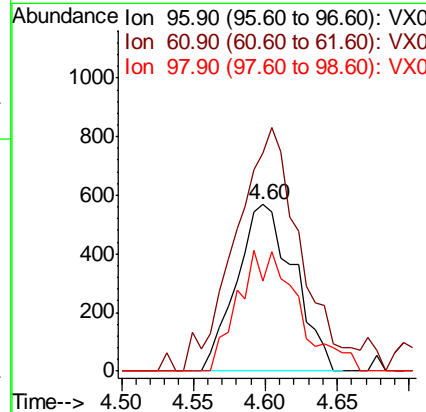
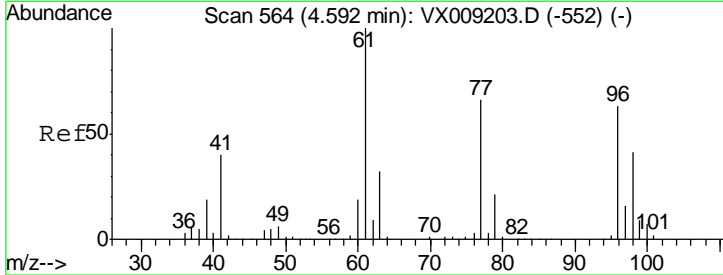
Instrument :
 MSVOA_X
 ClientSampled :

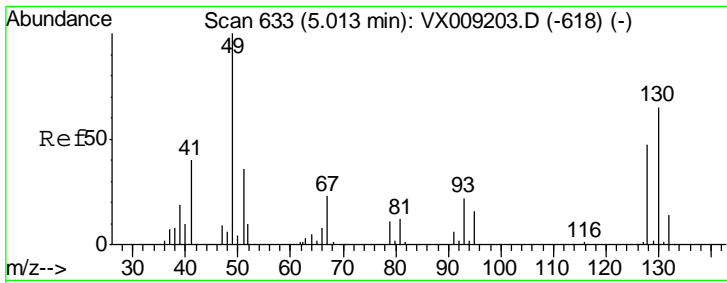
Tgt Ion	Resp	Lower	Upper
96	1073		
61	149.2	124.5	186.7
98	44.8	50.4	75.6#



#27
 cis-1,2-Dichloroethene
 Concen: 0.714 ug/l
 RT: 4.60 min Scan# 565
 Delta R.T. 0.01 min
 Lab File: VX009872.D
 Acq: 23 May 2019 20:35

Tgt Ion	Resp	Lower	Upper
96	1574		
61	165.6	0.0	324.0
98	75.7	0.0	130.4

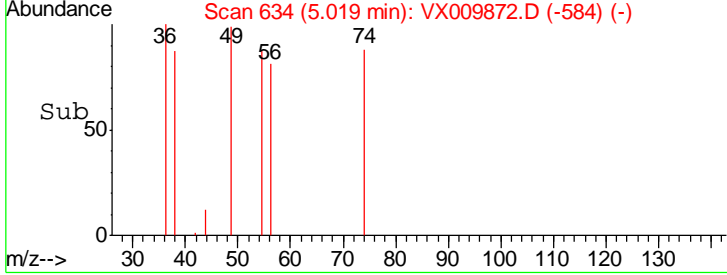
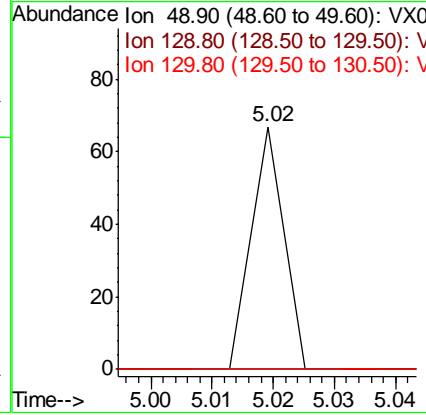
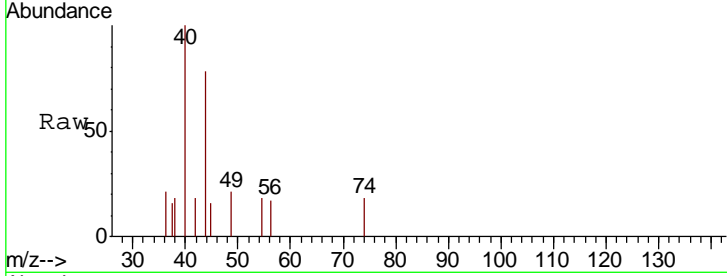




#28
 Bromochloromethane
 Concen: Below Cal
 RT: 5.02 min Scan# 634
 Delta R.T. 0.01 min
 Lab File: VX009872.D
 Acq: 23 May 2019 20:35

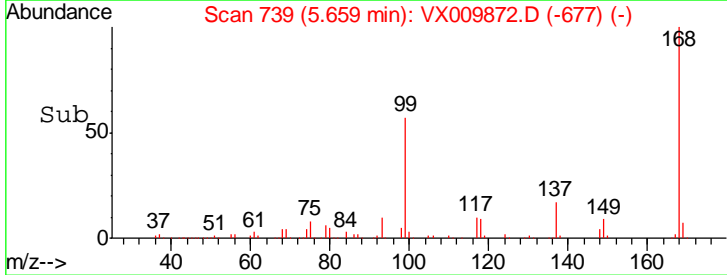
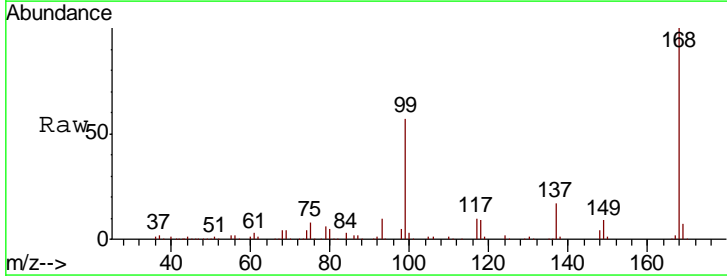
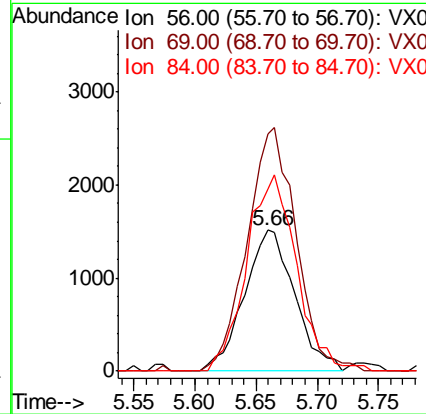
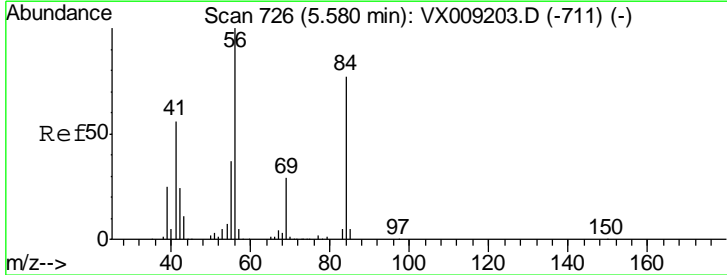
Instrument :
 MSVOA_X
 ClientSampled :

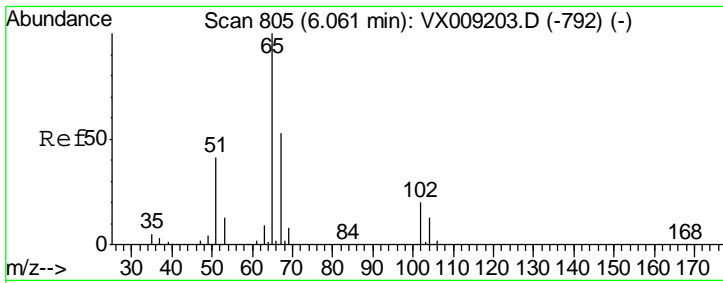
Tgt Ion	Resp	Lower	Upper
49	100		
129	0.0	0.0	3.8
130	0.0	51.2	76.8#



#31
 Cyclohexane
 Concen: 1.184 ug/l
 RT: 5.66 min Scan# 739
 Delta R.T. 0.08 min
 Lab File: VX009872.D
 Acq: 23 May 2019 20:35

Tgt Ion	Resp	Lower	Upper
56	100		
69	168.4	23.4	35.0#
84	129.7	61.9	92.9#

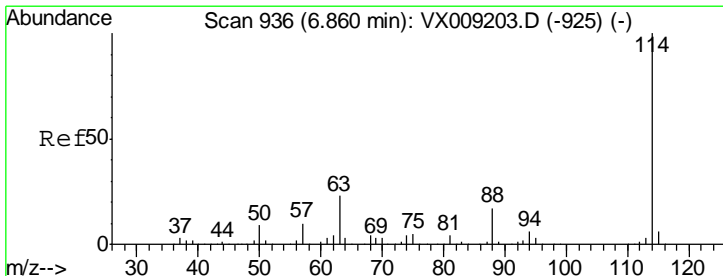
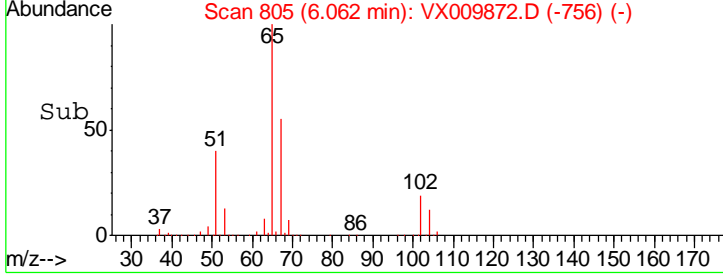
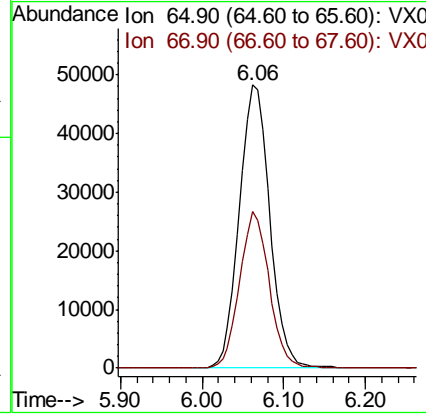
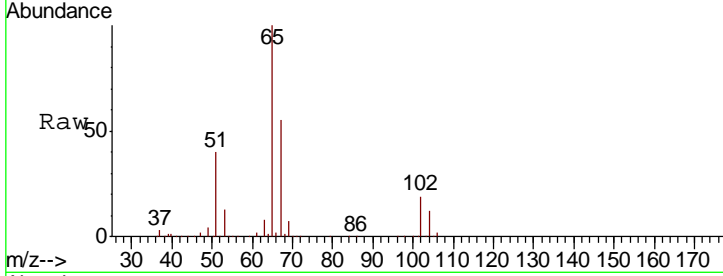




#33
 1,2-Dichloroethane-d4
 Concen: 50.543 ug/l
 RT: 6.06 min Scan# 805
 Delta R.T. 0.00 min
 Lab File: VX009872.D
 Acq: 23 May 2019 20:35

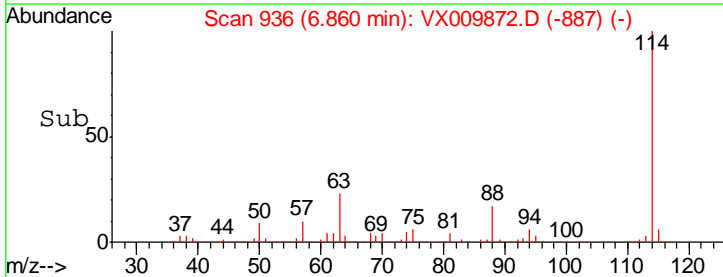
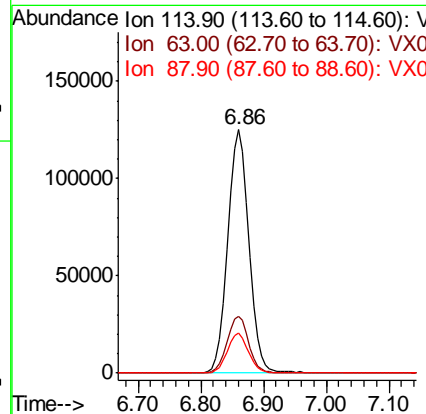
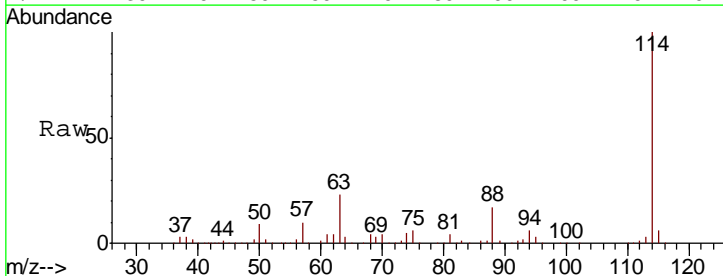
Instrument :
 MSVOA_X
 ClientSampled :

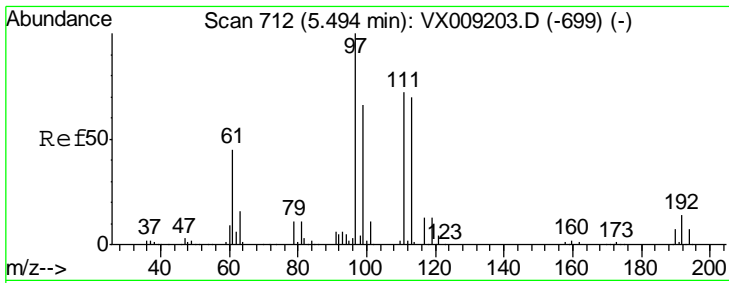
Tgt Ion	Resp	Lower	Upper
65	125195		
67	53.7	0.0	106.6



#34
 1,4-Difluorobenzene
 Concen: 50.000 ug/l
 RT: 6.86 min Scan# 936
 Delta R.T. 0.00 min
 Lab File: VX009872.D
 Acq: 23 May 2019 20:35

Tgt Ion	Resp	Lower	Upper
114	293087		
63	23.5	0.0	45.6
88	16.6	0.0	33.2

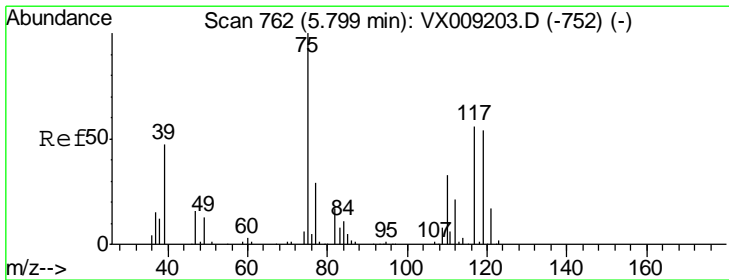
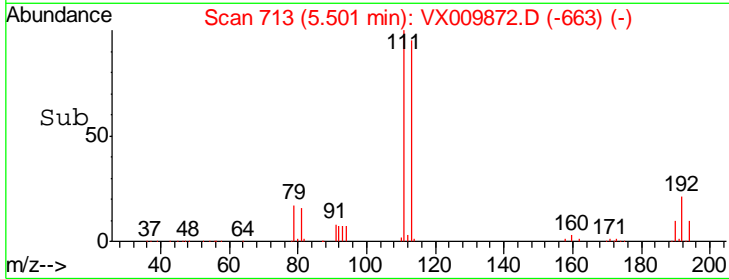
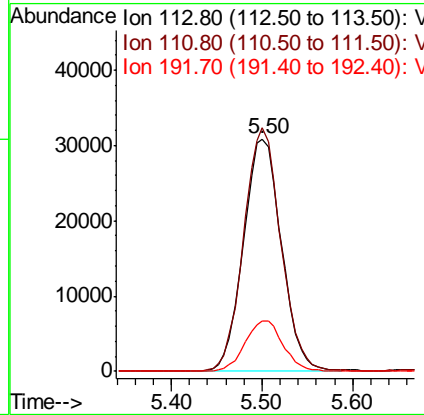
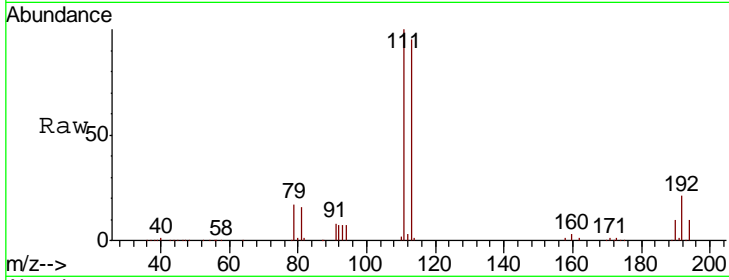




#35
 Dibromofluoromethane
 Concen: 48.635 ug/l
 RT: 5.50 min Scan# 713
 Delta R.T. 0.01 min
 Lab File: VX009872.D
 Acq: 23 May 2019 20:35

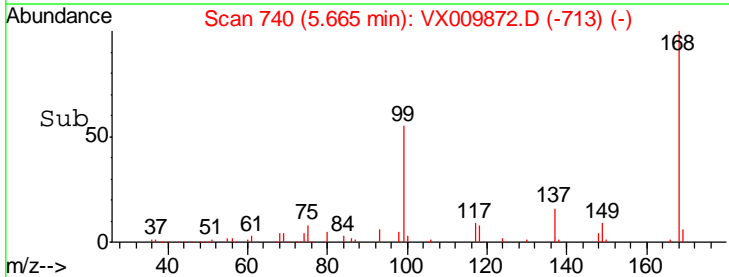
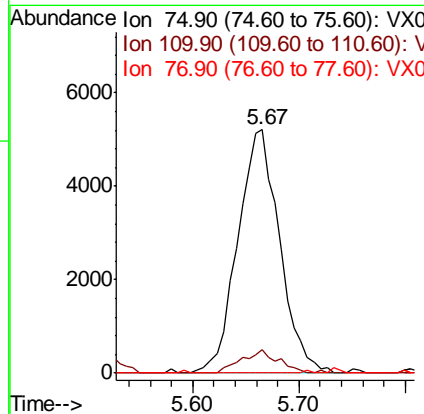
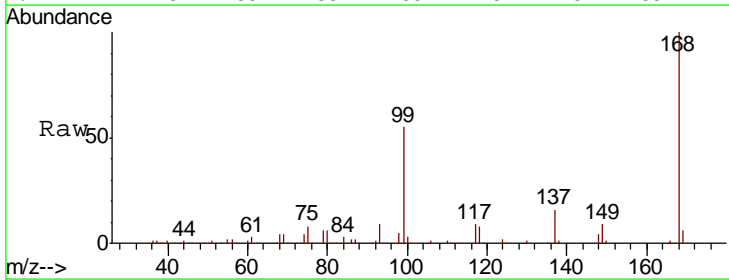
Instrument :
 MSVOA_X
 ClientSampled :

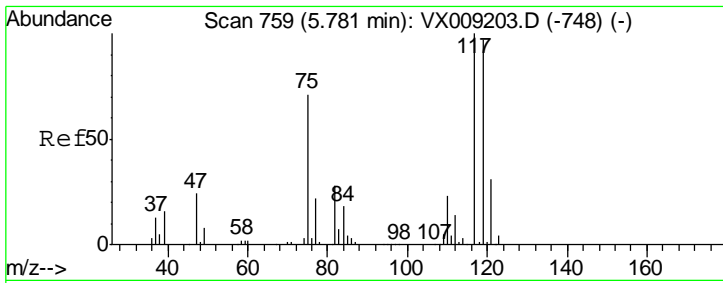
Tgt Ion	Resp	Lower	Upper
113	100		
111	102.5	82.8	124.2
192	21.7	17.0	25.6



#36
 1,1-Dichloropropene
 Concen: 5.269 ug/l
 RT: 5.67 min Scan# 740
 Delta R.T. -0.13 min
 Lab File: VX009872.D
 Acq: 23 May 2019 20:35

Tgt Ion	Resp	Lower	Upper
75	100		
110	8.4	16.9	50.6#
77	0.0	24.8	37.2#

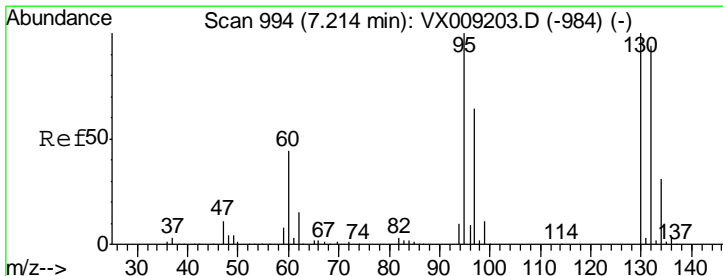
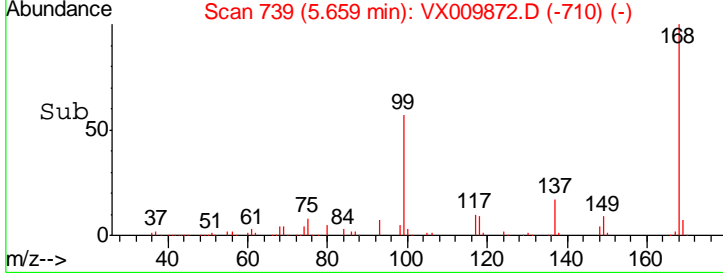
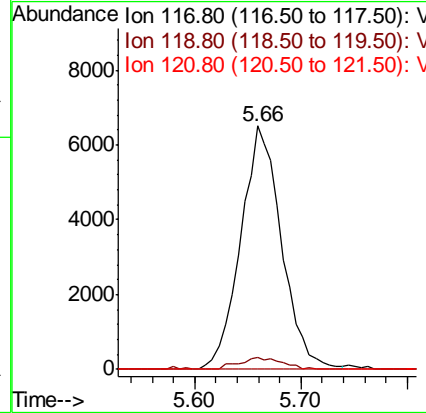
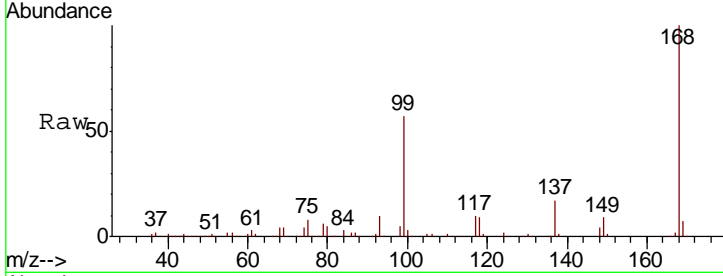




#38
 Carbon Tetrachloride
 Concen: 7.061 ug/l
 RT: 5.66 min Scan# 739
 Delta R.T. -0.12 min
 Lab File: VX009872.D
 Acq: 23 May 2019 20:35

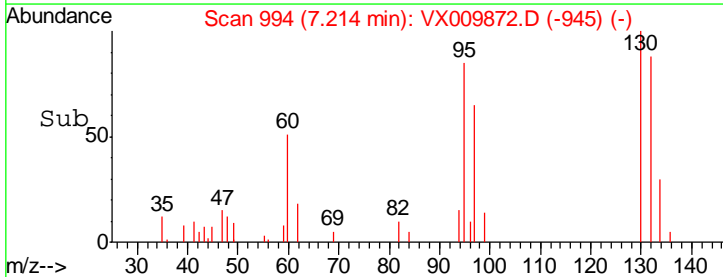
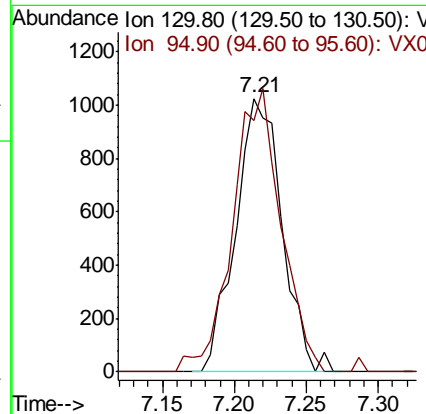
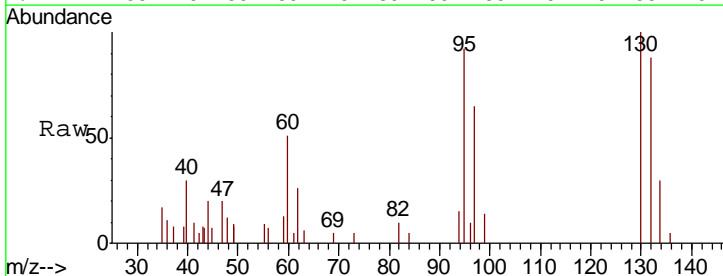
Instrument :
 MSVOA_X
 ClientSampled :

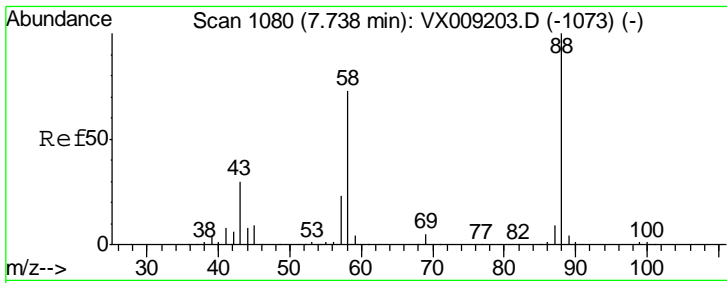
Tgt Ion	Resp	Lower	Upper
117	17473		
119	4.9	77.5	116.3#
121	0.0	24.7	37.1#



#44
 Trichloroethene
 Concen: 1.127 ug/l
 RT: 7.21 min Scan# 994
 Delta R.T. 0.00 min
 Lab File: VX009872.D
 Acq: 23 May 2019 20:35

Tgt Ion	Resp	Lower	Upper
130	2297		
95	92.0	0.0	199.2

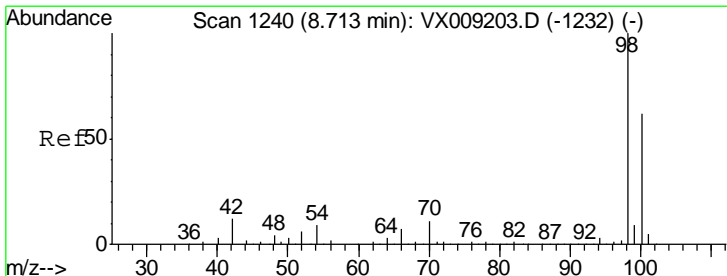
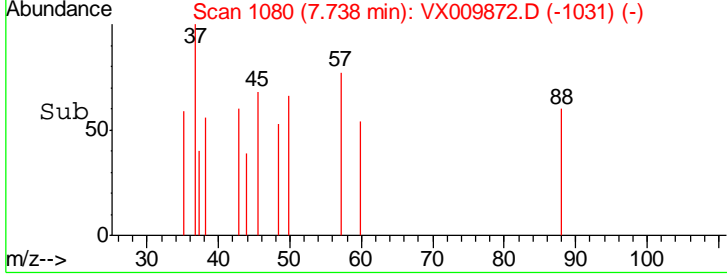
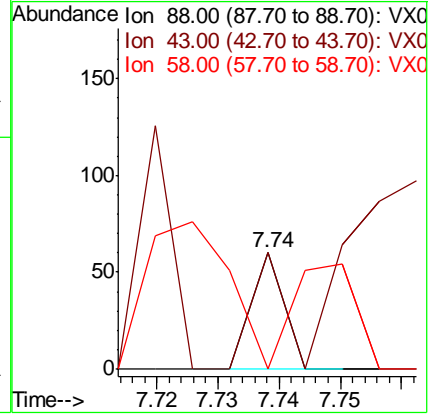
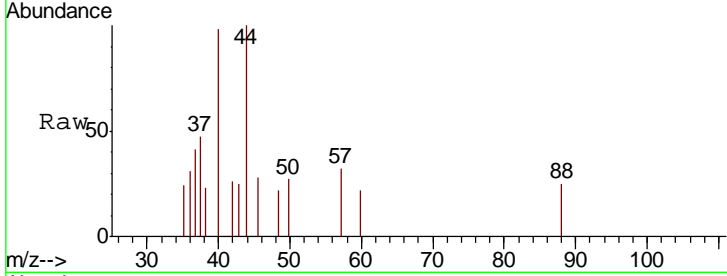




#49
 1,4-Dioxane
 Concen: 0.360 ug/l
 RT: 7.74 min Scan# 1080
 Delta R.T. 0.00 min
 Lab File: VX009872.D
 Acq: 23 May 2019 20:35

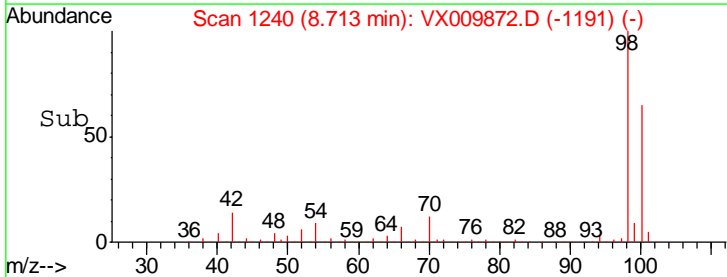
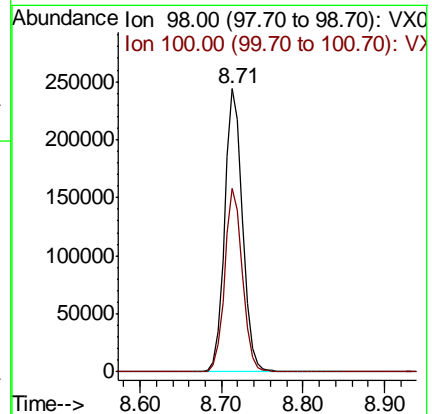
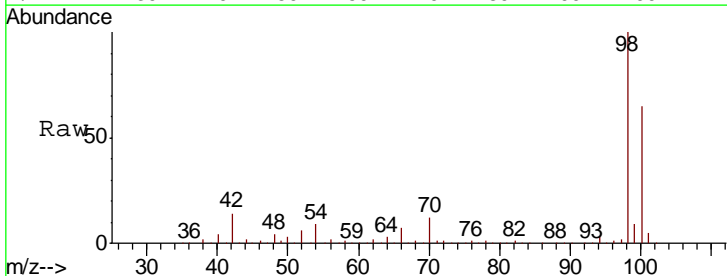
Instrument :
 MSVOA_X
 ClientSampled :

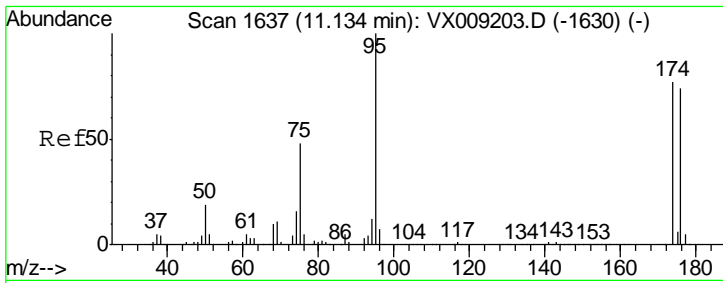
Tgt Ion	Resp	Lower	Upper
88	100		
43	0.0	28.6	42.8#
58	327.3	61.7	92.5#



#50
 Toluene-d8
 Concen: 49.967 ug/l
 RT: 8.71 min Scan# 1240
 Delta R.T. 0.00 min
 Lab File: VX009872.D
 Acq: 23 May 2019 20:35

Tgt Ion	Resp	Lower	Upper
98	100		
100	64.3	51.2	76.8

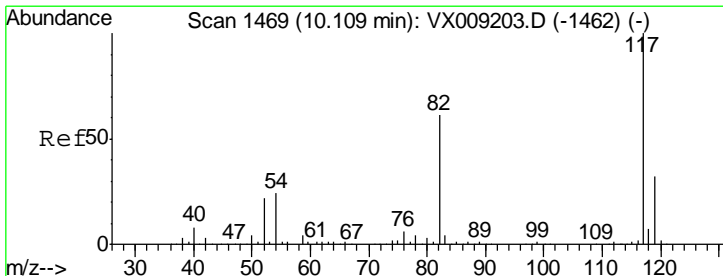
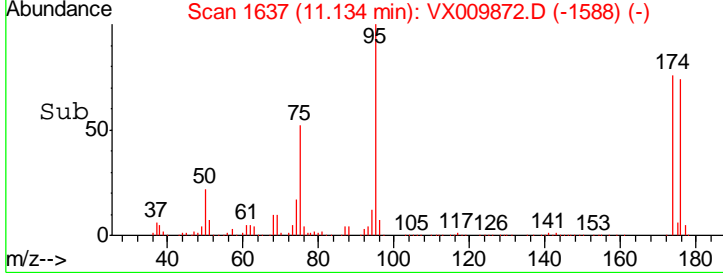
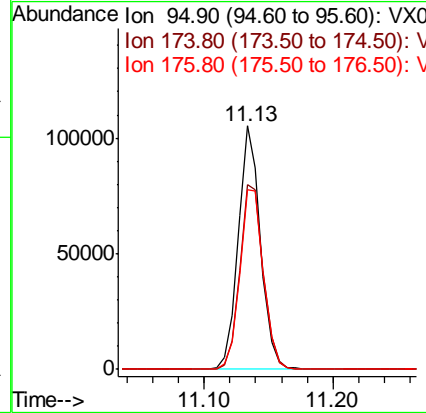
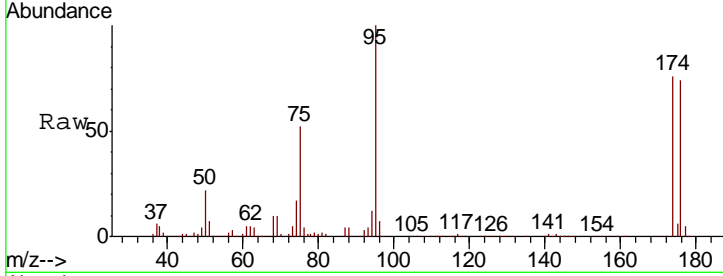




#62
 4-Bromofluorobenzene
 Concen: 46.709 ug/l
 RT: 11.13 min Scan# 1637
 Delta R.T. 0.00 min
 Lab File: VX009872.D
 Acq: 23 May 2019 20:35

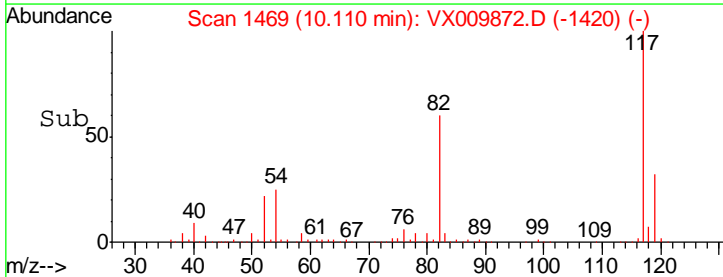
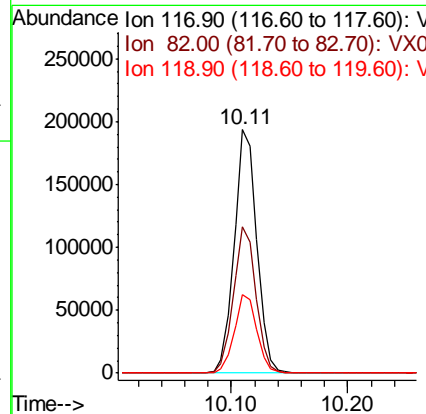
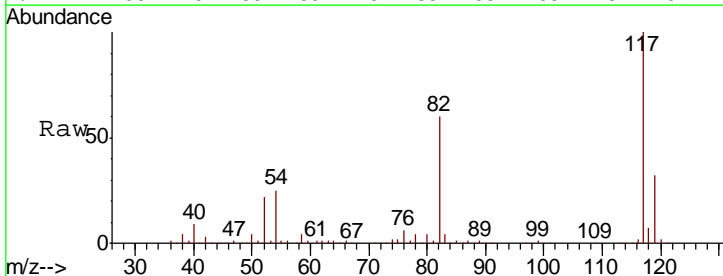
Instrument :
 MSVOA_X
 ClientSampled :

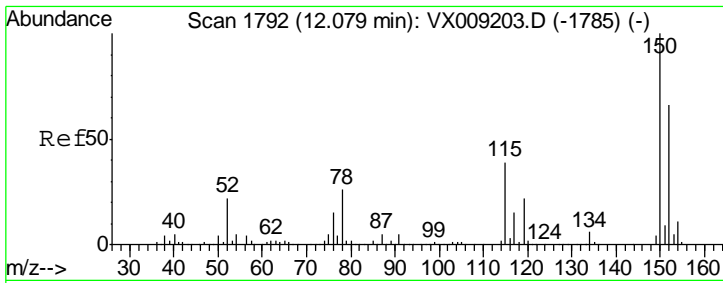
Tgt Ion	Resp	Lower	Upper
95	126249		
174	80.2	0.0	161.6
176	79.0	0.0	159.2



#63
 Chlorobenzene-d5
 Concen: 50.000 ug/l
 RT: 10.11 min Scan# 1469
 Delta R.T. 0.00 min
 Lab File: VX009872.D
 Acq: 23 May 2019 20:35

Tgt Ion	Resp	Lower	Upper
117	261863		
82	60.3	48.8	73.2
119	32.1	25.8	38.6

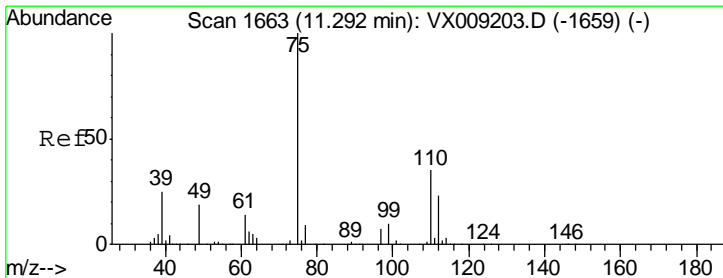
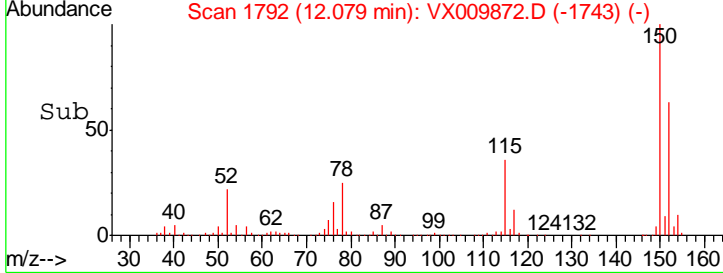
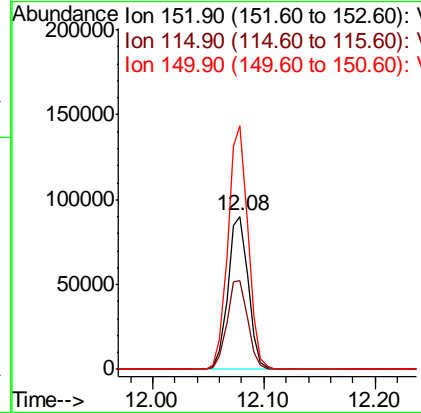
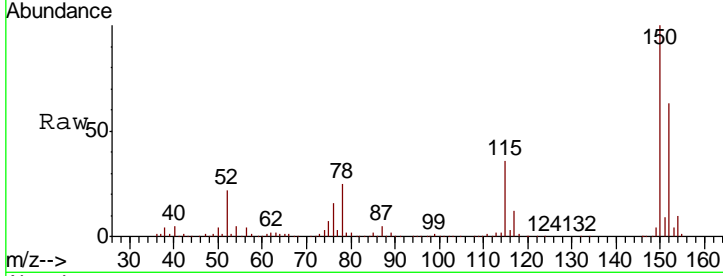




#72
 1,4-Dichlorobenzene-d4
 Concen: 50.000 ug/l
 RT: 12.08 min Scan# 1792
 Delta R.T. 0.00 min
 Lab File: VX009872.D
 Acq: 23 May 2019 20:35

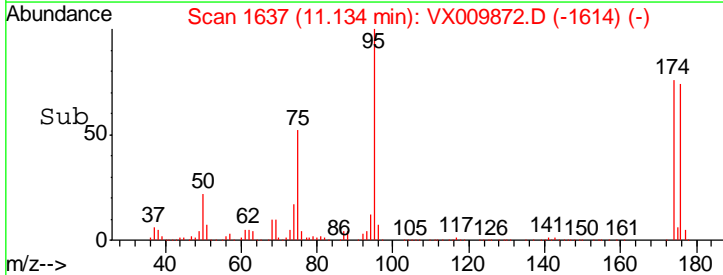
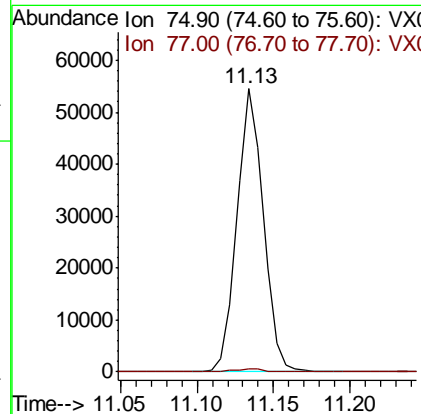
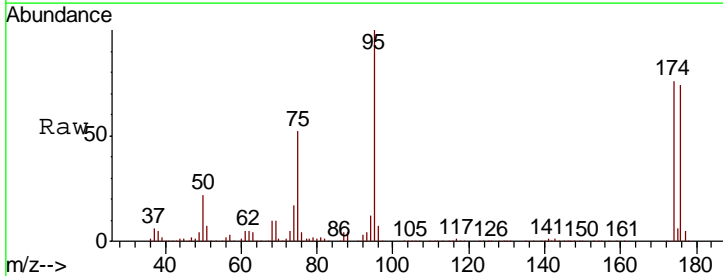
Instrument : MSVOA_X
 ClientSampled :

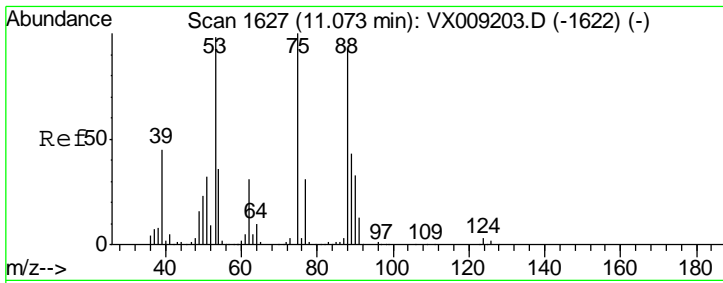
Tgt Ion	Resp	Lower	Upper
152	113783		
152	100		
115	59.3	41.2	123.6
150	156.6	0.0	346.4



#76
 1,2,3-Trichloropropane
 Concen: 24.754 ug/l
 RT: 11.13 min Scan# 1637
 Delta R.T. -0.16 min
 Lab File: VX009872.D
 Acq: 23 May 2019 20:35

Tgt Ion	Resp	Lower	Upper
75	65334		
75	100		
77	1.2	22.1	66.1#

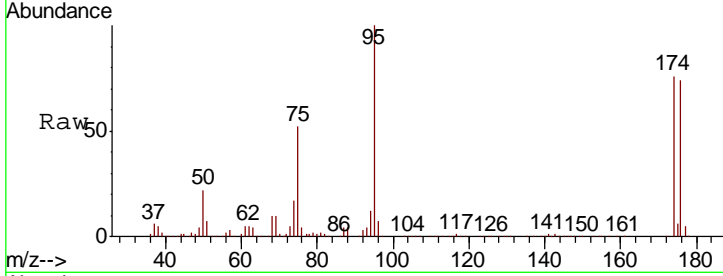




#81
 trans-1,4-Dichloro-2-butene
 Concen: 63.336 ug/l
 RT: 11.13 min Scan# 1637
 Delta R.T. 0.06 min
 Lab File: VX009872.D
 Acq: 23 May 2019 20:35

Instrument : MSVOA_X
 ClientSampled :

Tot Ion	75	Resp	65334
Ion Ratio	Lower	Upper	
75	100		
53	0.1	79.0	118.6#
89	0.1	34.7	52.1#



Abundance Ion 74.90 (74.60 to 75.60): VX0
 Ion 53.00 (52.70 to 53.70): VX0
 Ion 88.90 (88.60 to 89.60): VX0

