

Data Path : Z:\voasrv\HPCHEM1\MSVOA_X\Data\VX052322\
 Data File : VX028900.D
 Acq On : 23 May 2022 17:32
 Operator : JC/MD
 Sample : N2958-06
 Misc : 5.0mL/MSVOA_X/WATER
 ALS Vial : 15 Sample Multiplier: 1

Instrument :
 MSVOA_X
 ClientSampleId :
 TB01-20220516

Quant Time: May 24 05:34:56 2022
 Quant Method : Z:\voasrv\HPCHEM1\MSVOA_X\Method\82X051222W.M
 Quant Title : SW846 8260
 QLast Update : Thu May 12 14:58:53 2022
 Response via : Initial Calibration

Compound	R.T.	QIon	Response	Conc	Units	Dev(Min)

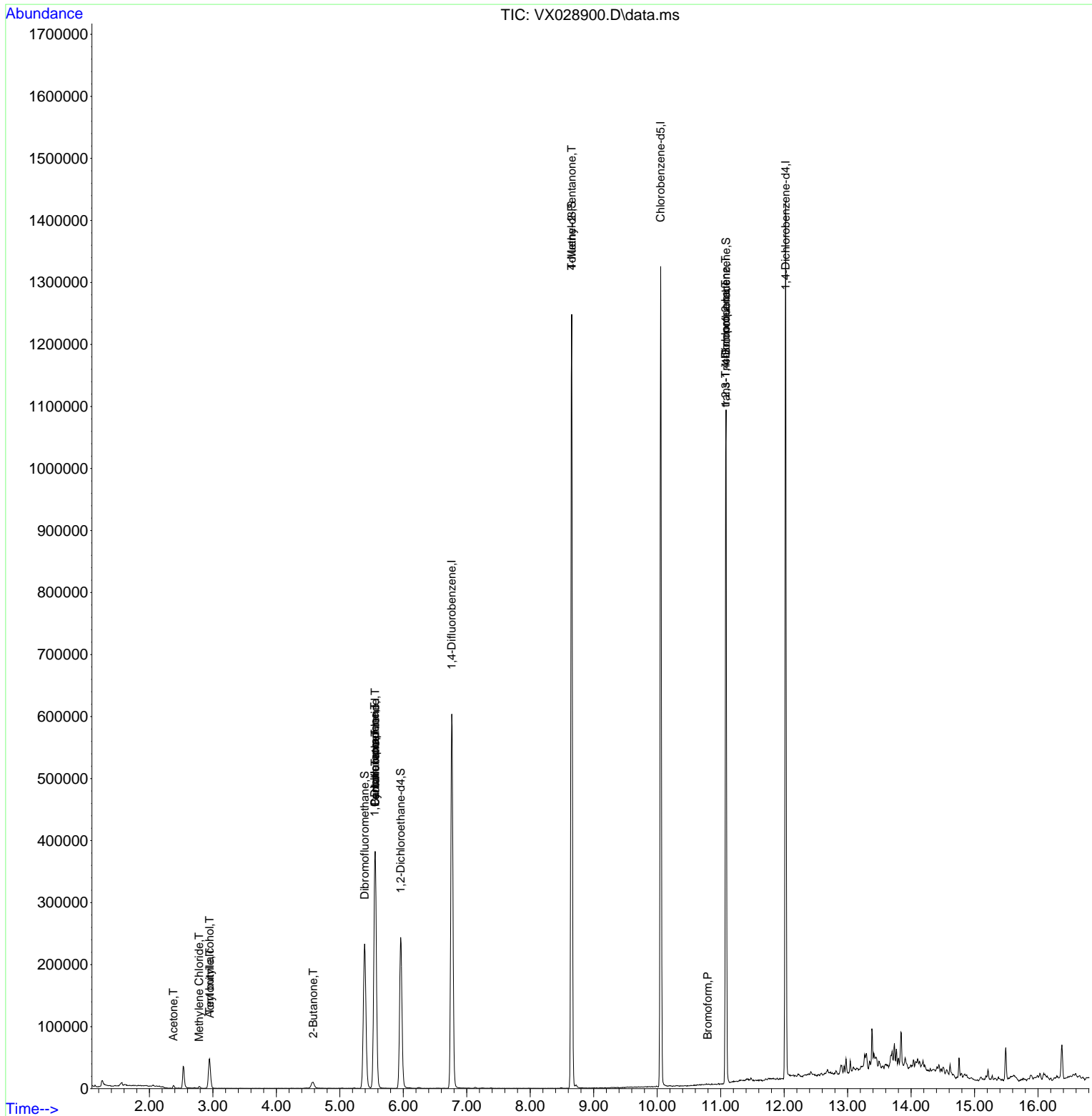
Internal Standards						
1) Pentafluorobenzene	5.556	168	365805	50.000	ug/l	0.00
34) 1,4-Difluorobenzene	6.763	114	637962	50.000	ug/l	0.00
63) Chlorobenzene-d5	10.055	117	609626	50.000	ug/l	0.00
72) 1,4-Dichlorobenzene-d4	12.024	152	284800	50.000	ug/l	0.00
System Monitoring Compounds						
33) 1,2-Dichloroethane-d4	5.958	65	239745	47.812	ug/l	0.00
Spiked Amount	50.000	Range 61 - 141	Recovery	=	95.620%	
35) Dibromofluoromethane	5.391	113	203218	48.619	ug/l	0.00
Spiked Amount	50.000	Range 69 - 133	Recovery	=	97.240%	
50) Toluene-d8	8.652	98	755062	47.914	ug/l	0.00
Spiked Amount	50.000	Range 65 - 126	Recovery	=	95.820%	
62) 4-Bromofluorobenzene	11.085	95	303148	51.503	ug/l	0.00
Spiked Amount	50.000	Range 58 - 135	Recovery	=	103.000%	
Target Compounds						
						Qvalue
5) Bromomethane	1.611	94	1121	Below Cal	#	70
6) Chloroethane	1.648	64	248	Below Cal	#	43
11) Tert butyl alcohol	2.946	59	28231	19.162	ug/l #	76
15) Acrylonitrile	2.952	53	534	0.221	ug/l #	18
16) Acetone	2.379	43	4375	2.033	ug/l	94
20) Methylene Chloride	2.782	84	1369	0.303	ug/l #	82
25) 2-Butanone	4.580	43	988	0.292	ug/l #	44
31) Cyclohexane	5.556	56	6915	0.994	ug/l #	1
36) 1,1-Dichloropropene	5.549	75	28374	4.520	ug/l #	49
38) Carbon Tetrachloride	5.556	117	38646	6.117	ug/l #	16
51) 4-Methyl-2-Pentanone	8.652	43	2963	0.438	ug/l #	1
71) Bromoform	10.798	173	94	1.873	ug/l #	29
76) 1,2,3-Trichloropropane	11.079	75	151102	22.655	ug/l #	38
81) trans-1,4-Dichloro-2-b...	11.079	75	151102	66.224	ug/l #	15

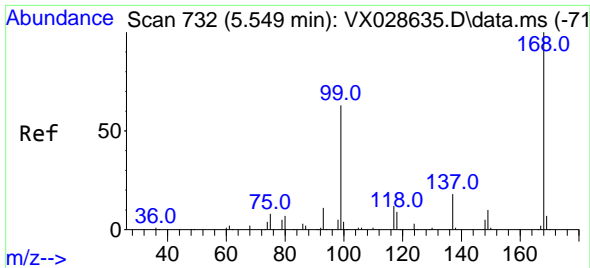
(#) = qualifier out of range (m) = manual integration (+) = signals summed

Data Path : Z:\voasrv\HPCHEM1\MSVOA_X\Data\VX052322\
 Data File : VX028900.D
 Acq On : 23 May 2022 17:32
 Operator : JC/MD
 Sample : N2958-06
 Misc : 5.0mL/MSVOA_X/WATER
 ALS Vial : 15 Sample Multiplier: 1

Instrument :
 MSVOA_X
 ClientSampleId :
 TB01-20220516

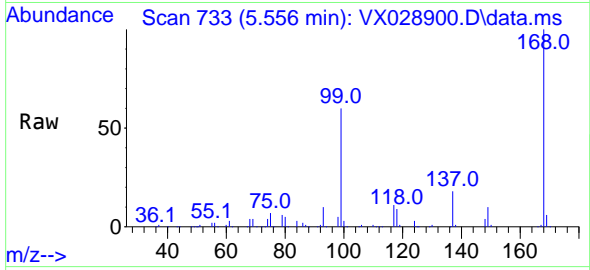
Quant Time: May 24 05:34:56 2022
 Quant Method : Z:\voasrv\HPCHEM1\MSVOA_X\Method\82X051222W.M
 Quant Title : SW846 8260
 QLast Update : Thu May 12 14:58:53 2022
 Response via : Initial Calibration



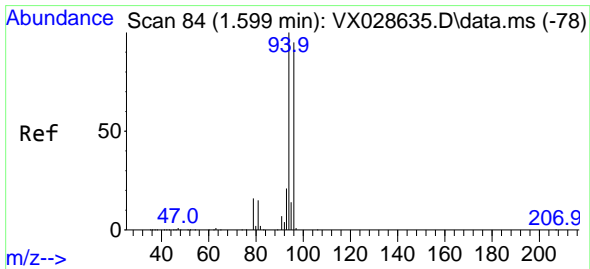
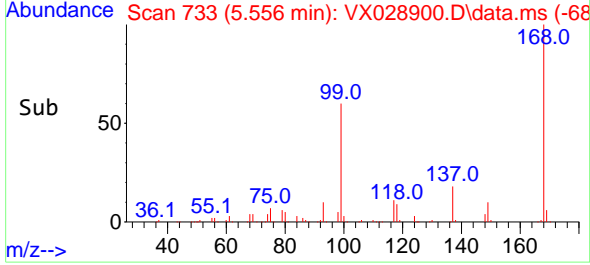
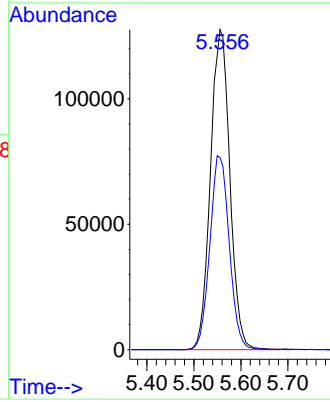


#1
 Pentafluorobenzene
 Concen: 50.000 ug/l
 RT: 5.556 min Scan# 71
 Delta R.T. 0.006 min
 Lab File: VX028900.D
 Acq: 23 May 2022 17:32

Instrument :
 MSVOA_X
 ClientSampleId :
 TB01-20220516

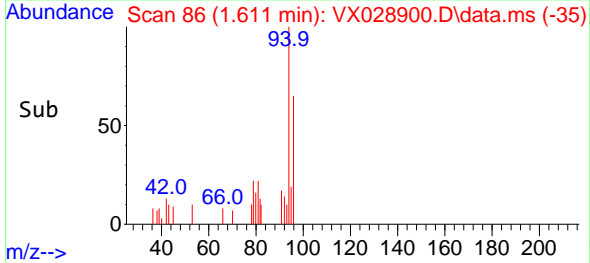
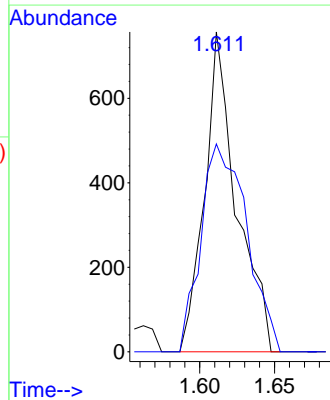
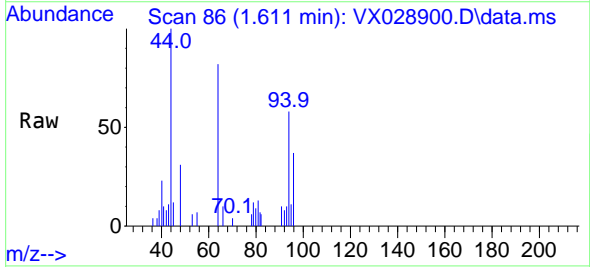


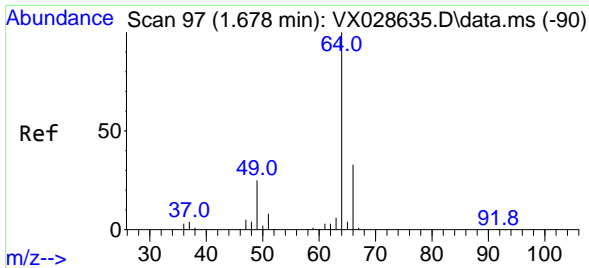
Tgt Ion:168 Resp: 365805
 Ion Ratio Lower Upper
 168 100
 99 60.1 41.7 62.5



#5
 Bromomethane
 Concen: Below Cal
 RT: 1.611 min Scan# 86
 Delta R.T. 0.012 min
 Lab File: VX028900.D
 Acq: 23 May 2022 17:32

Tgt Ion: 94 Resp: 1121
 Ion Ratio Lower Upper
 94 100
 96 65.0 75.3 112.9#

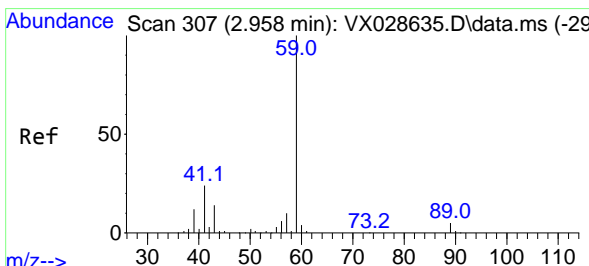
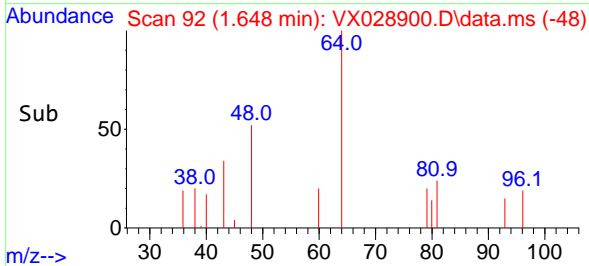
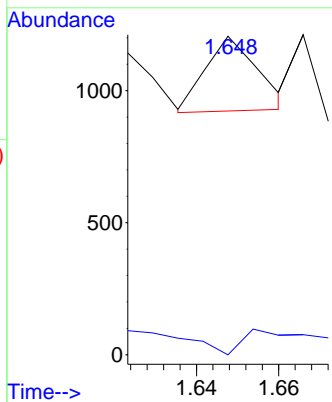
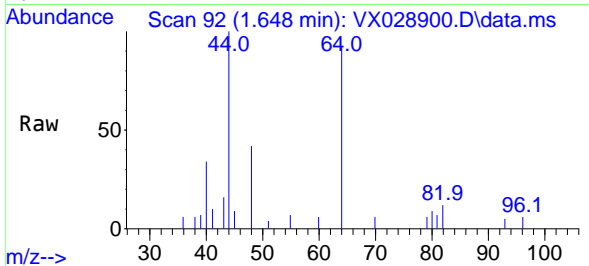




#6
 Chloroethane
 Concen: Below Cal
 RT: 1.648 min Scan# 91
 Delta R.T. -0.030 min
 Lab File: VX028900.D
 Acq: 23 May 2022 17:32

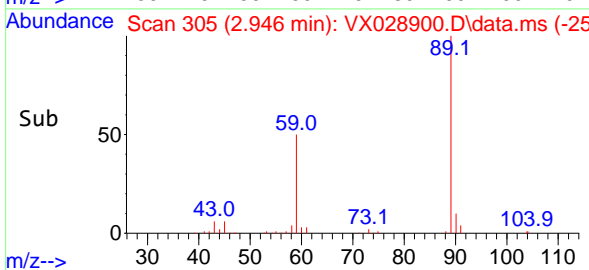
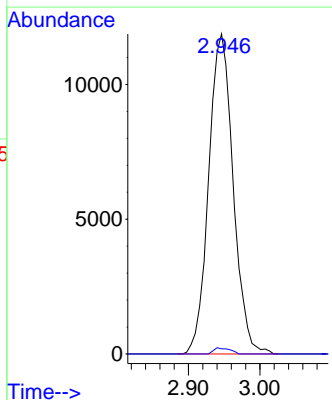
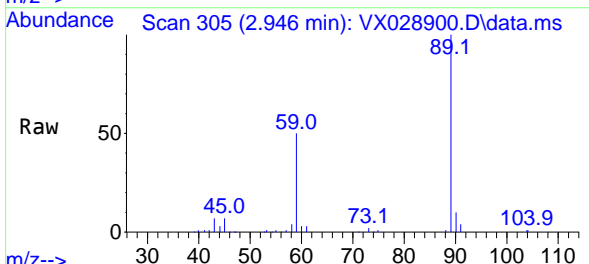
Instrument : MSVOA_X
 ClientSampleId : TB01-20220516

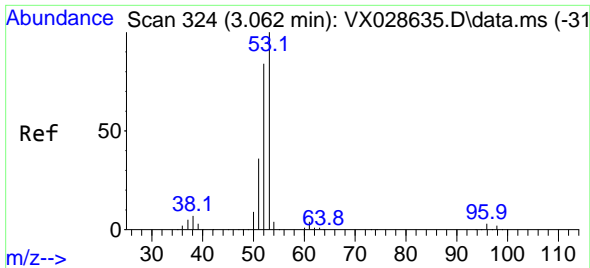
Tgt Ion: 64 Resp: 248
 Ion Ratio Lower Upper
 64 100
 66 0.0 25.3 37.9#



#11
 Tert butyl alcohol
 Concen: 19.162 ug/l
 RT: 2.946 min Scan# 305
 Delta R.T. -0.012 min
 Lab File: VX028900.D
 Acq: 23 May 2022 17:32

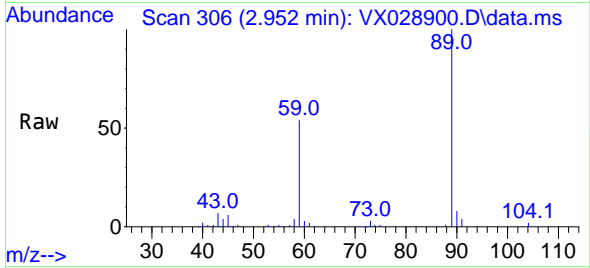
Tgt Ion: 59 Resp: 28231
 Ion Ratio Lower Upper
 59 100
 57 1.3 8.3 12.5#



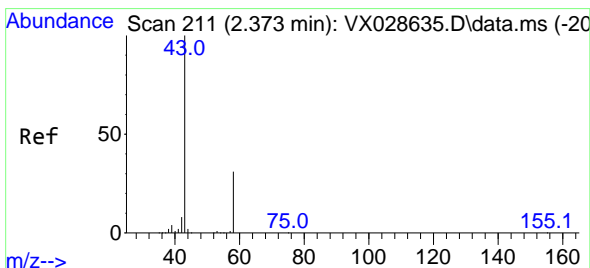
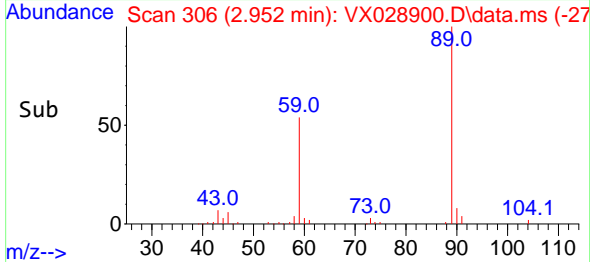
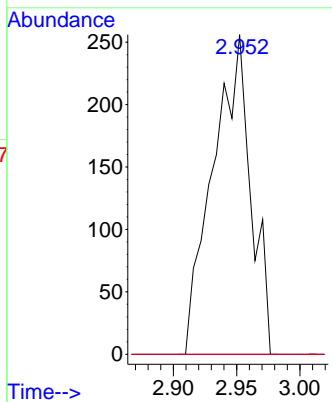


#15
 Acrylonitrile
 Concen: 0.221 ug/l
 RT: 2.952 min Scan# 306
 Delta R.T. -0.110 min
 Lab File: VX028900.D
 Acq: 23 May 2022 17:32

Instrument : MSVOA_X
 ClientSampleId : TB01-20220516

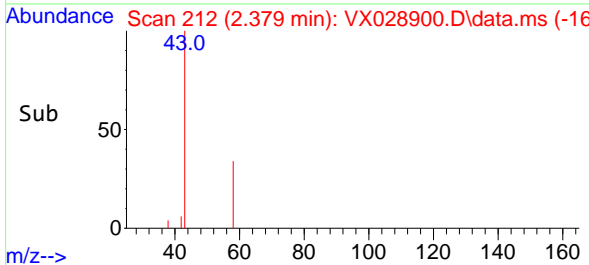
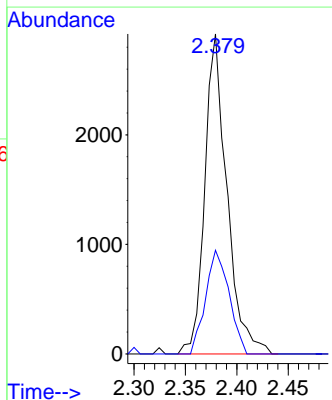
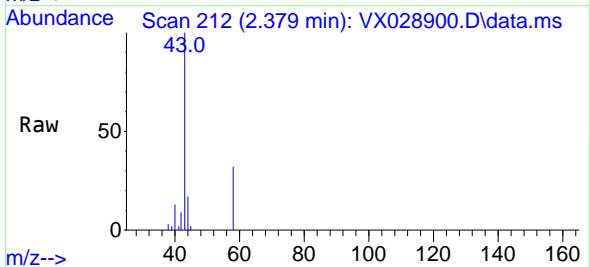


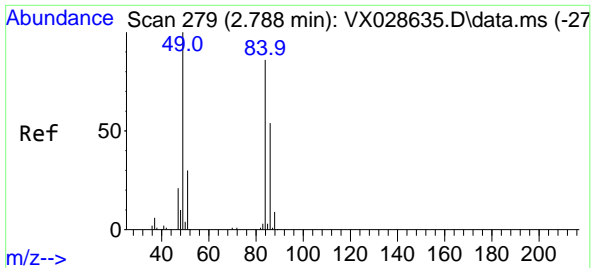
Tgt Ion: 53 Resp: 534
 Ion Ratio Lower Upper
 53 100
 52 0.0 65.7 98.5#
 51 0.0 28.4 42.6#



#16
 Acetone
 Concen: 2.033 ug/l
 RT: 2.379 min Scan# 212
 Delta R.T. 0.006 min
 Lab File: VX028900.D
 Acq: 23 May 2022 17:32

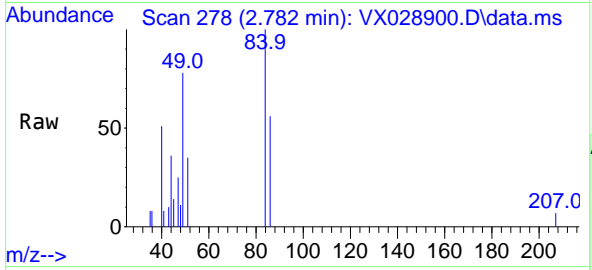
Tgt Ion: 43 Resp: 4375
 Ion Ratio Lower Upper
 43 100
 58 32.4 28.8 43.2





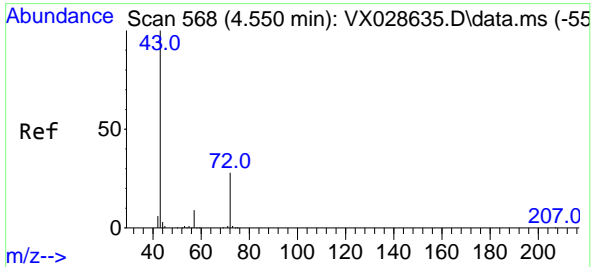
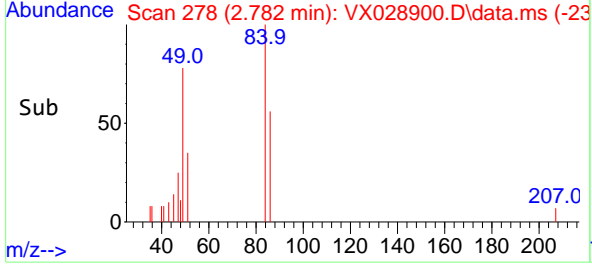
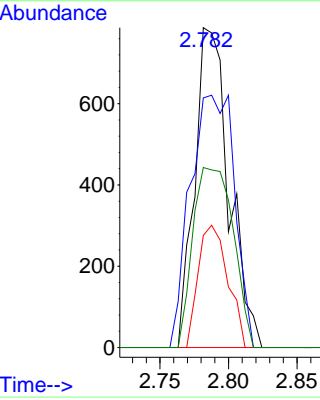
#20
 Methylene Chloride
 Concen: 0.303 ug/l
 RT: 2.782 min Scan# 21
 Delta R.T. -0.006 min
 Lab File: VX028900.D
 Acq: 23 May 2022 17:32

Instrument : MSVOA_X
 ClientSampleId : TB01-20220516



Tgt Ion: 84 Resp: 1369

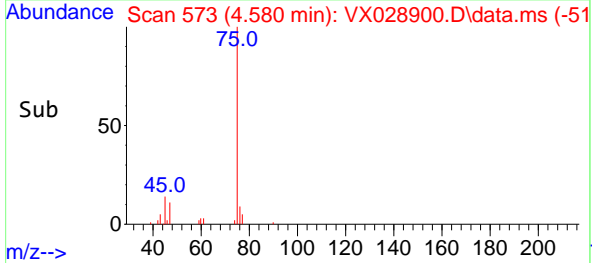
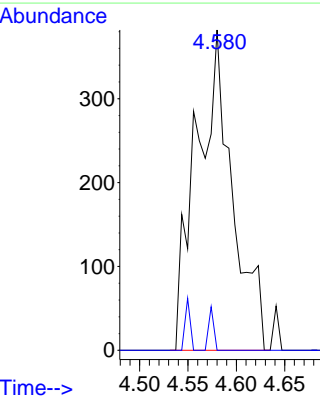
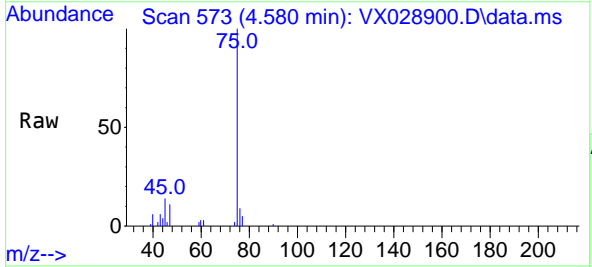
Ion	Ratio	Lower	Upper
84	100		
49	78.0	85.5	128.3#
51	35.1	26.6	39.8
86	56.3	51.5	77.3

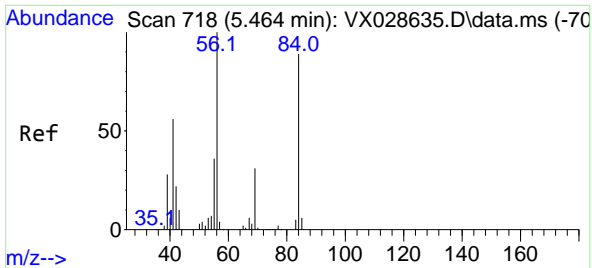


#25
 2-Butanone
 Concen: 0.292 ug/l
 RT: 4.580 min Scan# 573
 Delta R.T. 0.030 min
 Lab File: VX028900.D
 Acq: 23 May 2022 17:32

Tgt Ion: 43 Resp: 988

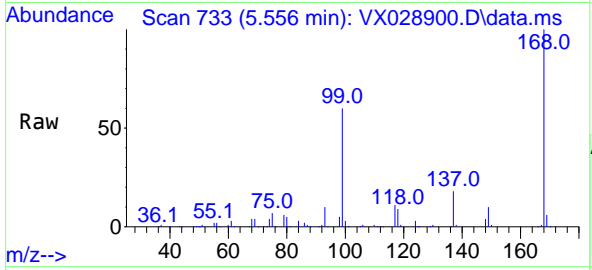
Ion	Ratio	Lower	Upper
43	100		
72	0.0	24.4	36.6#



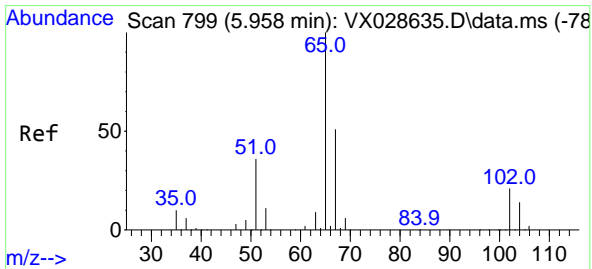
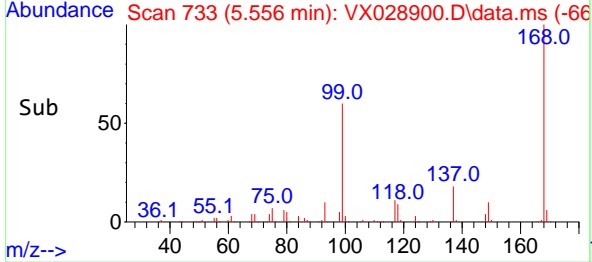
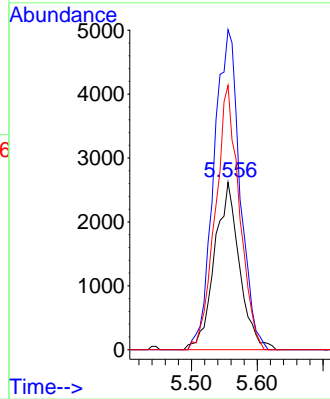


#31
 Cyclohexane
 Concen: 0.994 ug/l
 RT: 5.556 min Scan# 718
 Delta R.T. 0.091 min
 Lab File: VX028900.D
 Acq: 23 May 2022 17:32

Instrument : MSVOA_X
 ClientSampleId : TB01-20220516

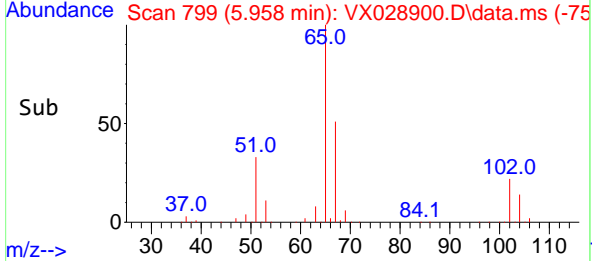
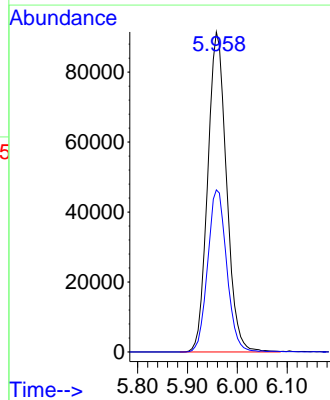
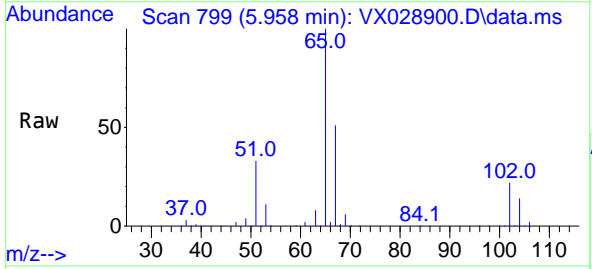


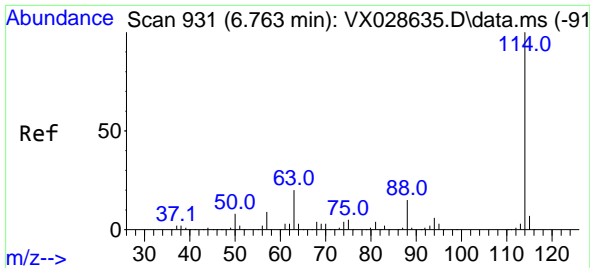
Tgt Ion: 56 Resp: 6915
 Ion Ratio Lower Upper
 56 100
 69 191.2 26.7 40.1#
 84 157.9 77.2 115.8#



#33
 1,2-Dichloroethane-d4
 Concen: 47.812 ug/l
 RT: 5.958 min Scan# 799
 Delta R.T. -0.000 min
 Lab File: VX028900.D
 Acq: 23 May 2022 17:32

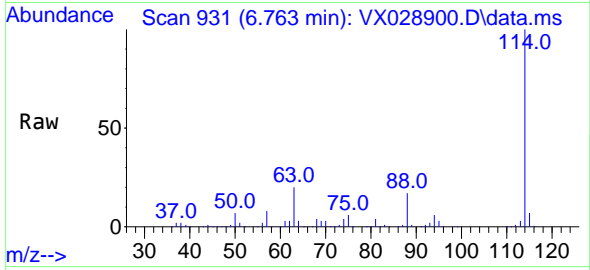
Tgt Ion: 65 Resp: 239745
 Ion Ratio Lower Upper
 65 100
 67 51.2 0.0 107.4



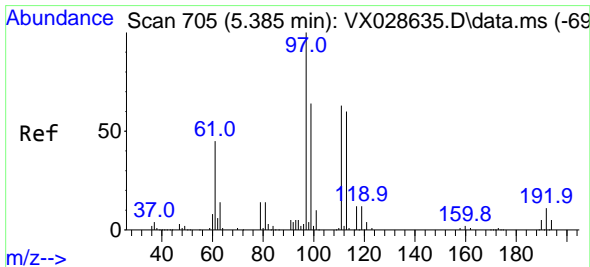
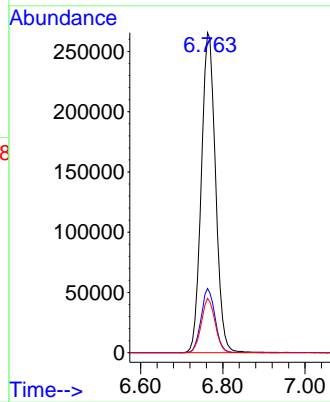
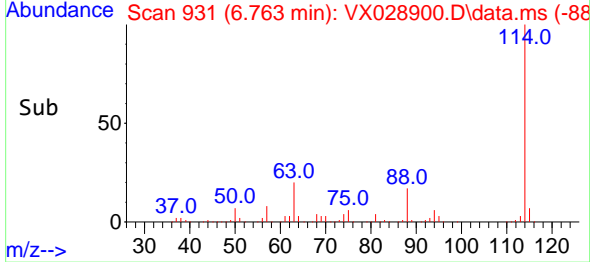


#34
 1,4-Difluorobenzene
 Concen: 50.000 ug/l
 RT: 6.763 min Scan# 91
 Delta R.T. -0.000 min
 Lab File: VX028900.D
 Acq: 23 May 2022 17:32

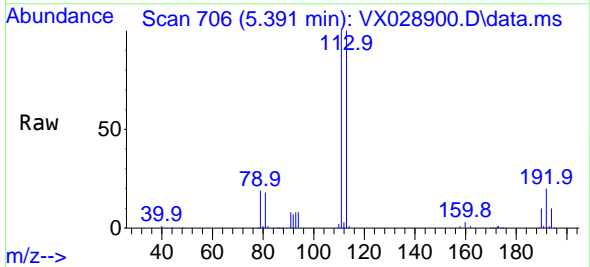
Instrument : MSVOA_X
 ClientSampleId : TB01-20220516



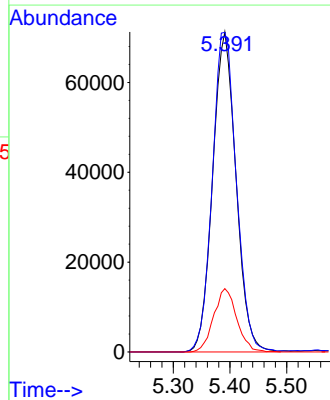
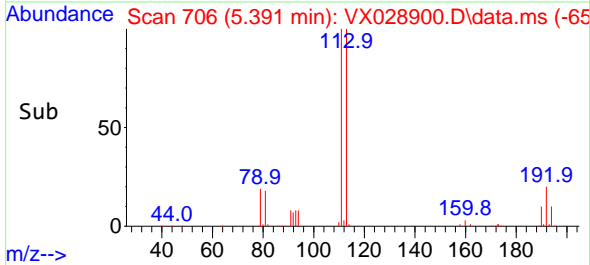
Tgt Ion:114 Resp: 637962
 Ion Ratio Lower Upper
 114 100
 63 20.0 0.0 36.8
 88 17.0 0.0 32.4

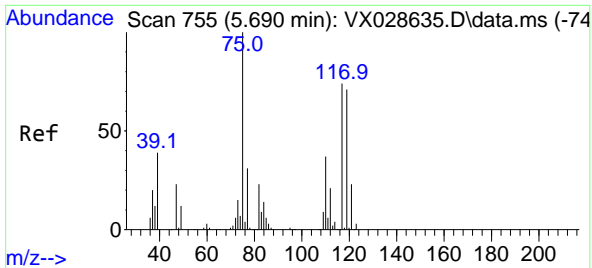


#35
 Dibromofluoromethane
 Concen: 48.619 ug/l
 RT: 5.391 min Scan# 706
 Delta R.T. 0.006 min
 Lab File: VX028900.D
 Acq: 23 May 2022 17:32



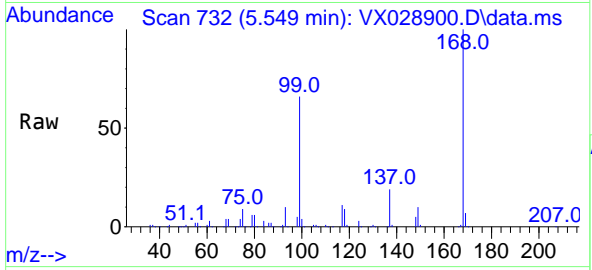
Tgt Ion:113 Resp: 203218
 Ion Ratio Lower Upper
 113 100
 111 102.8 82.8 124.2
 192 19.7 16.9 25.3





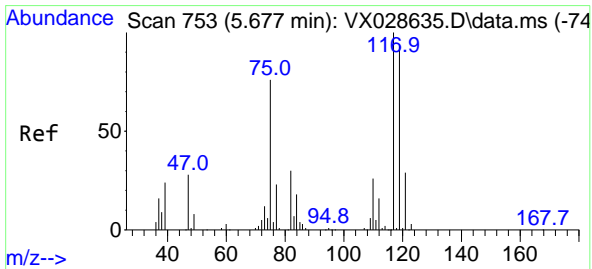
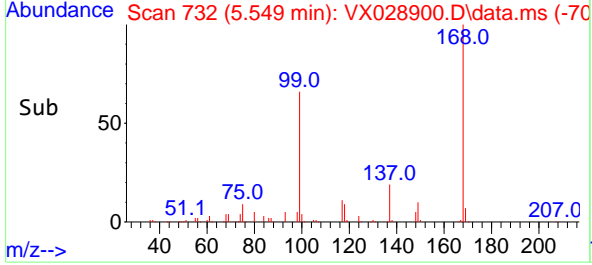
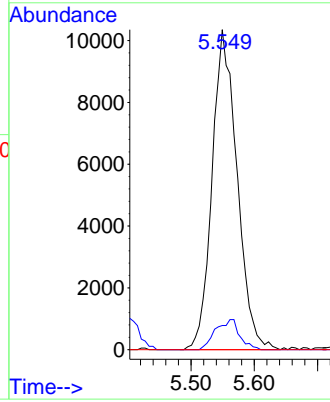
#36
 1,1-Dichloropropene
 Concen: 4.520 ug/l
 RT: 5.549 min Scan# 711
 Delta R.T. -0.141 min
 Lab File: VX028900.D
 Acq: 23 May 2022 17:32

Instrument : MSVOA_X
 ClientSampleId : TB01-20220516

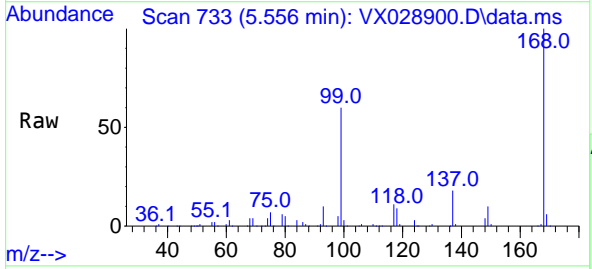


Tgt Ion: 75 Resp: 28374

Ion	Ratio	Lower	Upper
75	100		
110	9.1	18.3	54.8#
77	0.0	24.8	37.2#

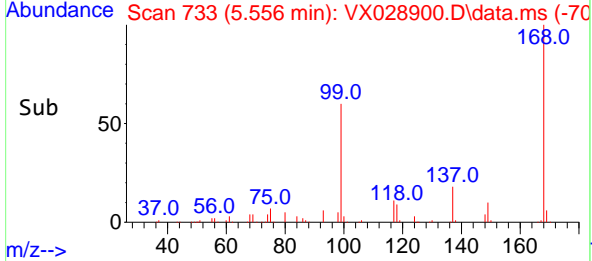
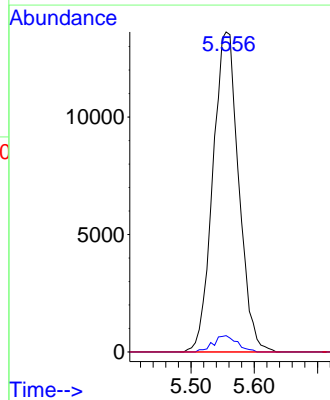


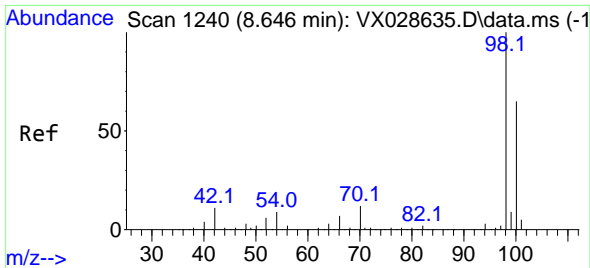
#38
 Carbon Tetrachloride
 Concen: 6.117 ug/l
 RT: 5.556 min Scan# 733
 Delta R.T. -0.121 min
 Lab File: VX028900.D
 Acq: 23 May 2022 17:32



Tgt Ion: 117 Resp: 38646

Ion	Ratio	Lower	Upper
117	100		
119	5.1	77.3	115.9#
121	0.0	24.2	36.2#

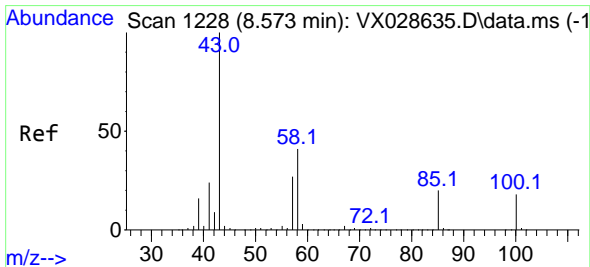
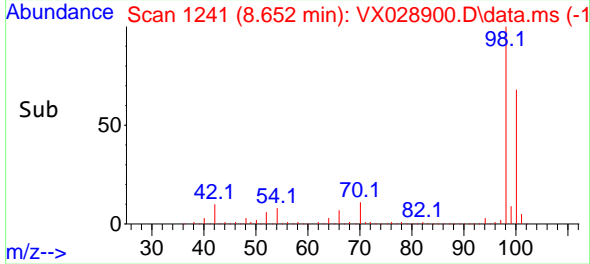
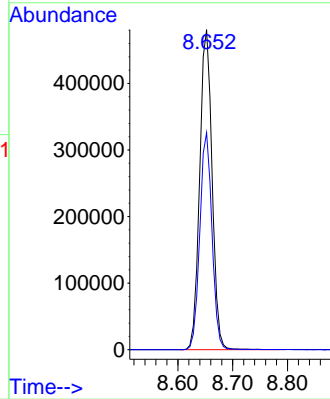
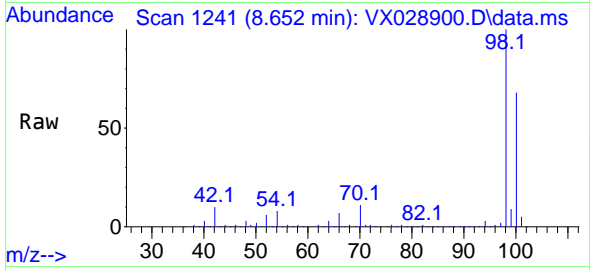




#50
 Toluene-d8
 Concen: 47.914 ug/l
 RT: 8.652 min Scan# 1241
 Delta R.T. 0.006 min
 Lab File: VX028900.D
 Acq: 23 May 2022 17:32

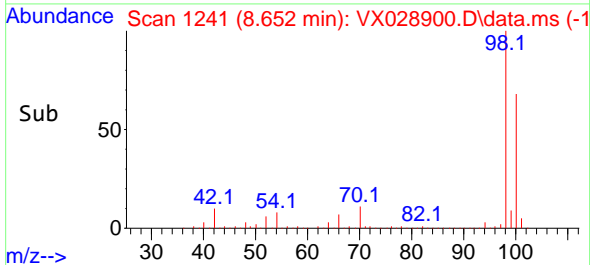
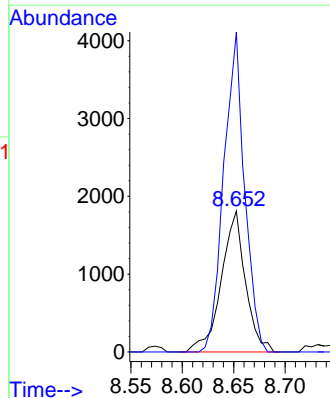
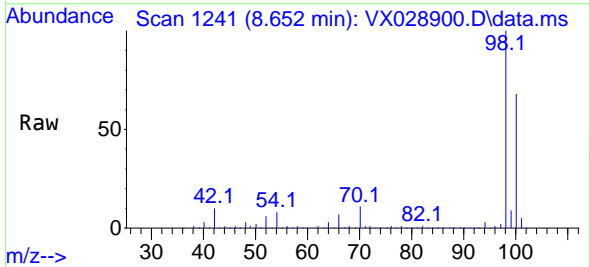
Instrument : MSVOA_X
 ClientSampleId : TB01-20220516

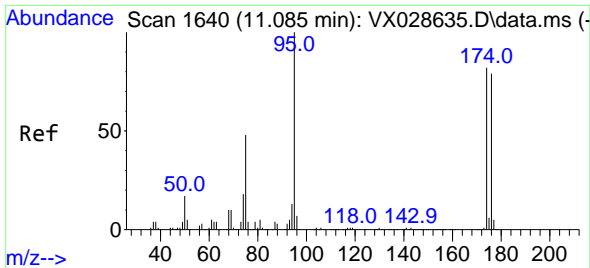
Tgt Ion: 98 Resp: 755062
 Ion Ratio Lower Upper
 98 100
 100 66.7 52.6 78.8



#51
 4-Methyl-2-Pentanone
 Concen: 0.438 ug/l
 RT: 8.652 min Scan# 1241
 Delta R.T. 0.079 min
 Lab File: VX028900.D
 Acq: 23 May 2022 17:32

Tgt Ion: 43 Resp: 2963
 Ion Ratio Lower Upper
 43 100
 58 195.1 36.1 54.1#

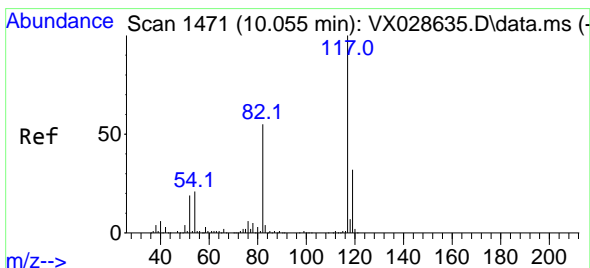
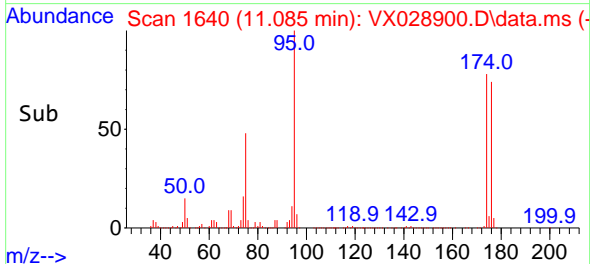
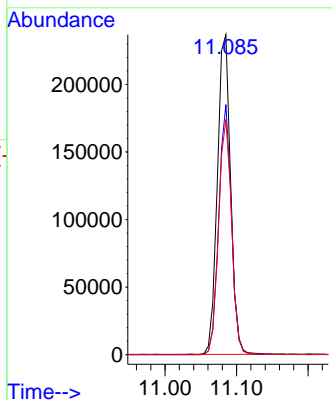
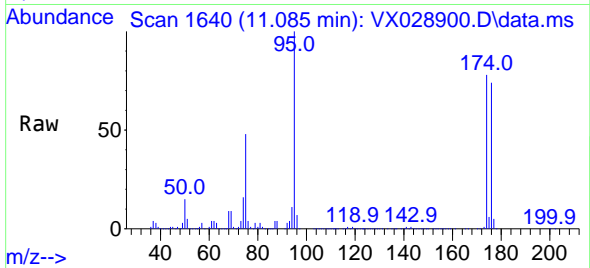




#62
 4-Bromofluorobenzene
 Concen: 51.503 ug/l
 RT: 11.085 min Scan# 10
 Delta R.T. -0.000 min
 Lab File: VX028900.D
 Acq: 23 May 2022 17:32

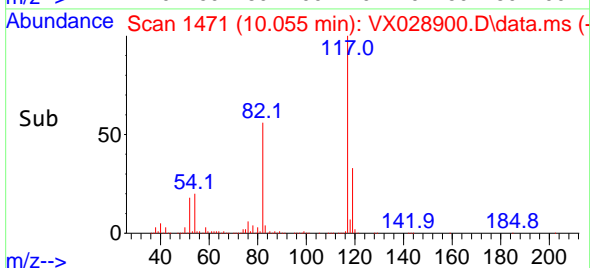
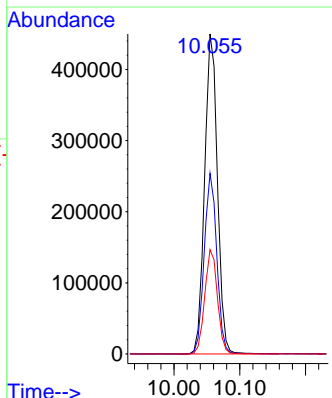
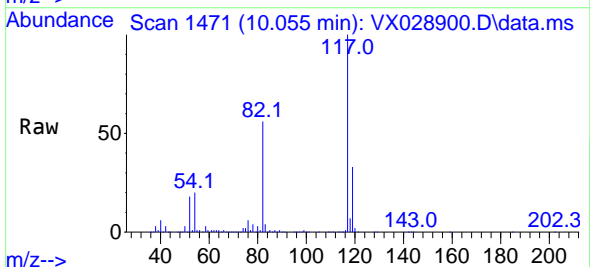
Instrument :
 MSVOA_X
 ClientSampleId :
 TB01-20220516

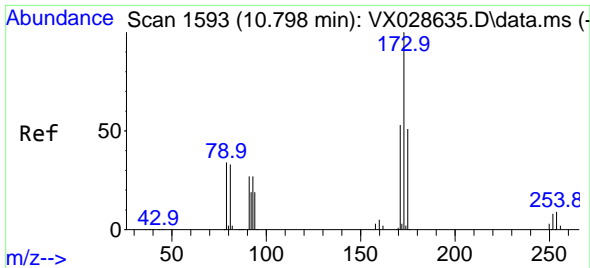
Tgt Ion: 95 Resp: 303148
 Ion Ratio Lower Upper
 95 100
 174 75.5 0.0 163.0
 176 72.4 0.0 155.0



#63
 Chlorobenzene-d5
 Concen: 50.000 ug/l
 RT: 10.055 min Scan# 1471
 Delta R.T. -0.000 min
 Lab File: VX028900.D
 Acq: 23 May 2022 17:32

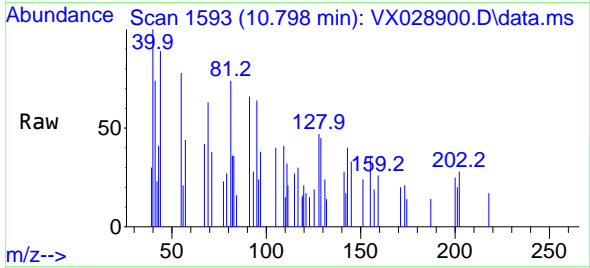
Tgt Ion: 117 Resp: 609626
 Ion Ratio Lower Upper
 117 100
 82 56.4 41.8 62.8
 119 32.6 24.8 37.2



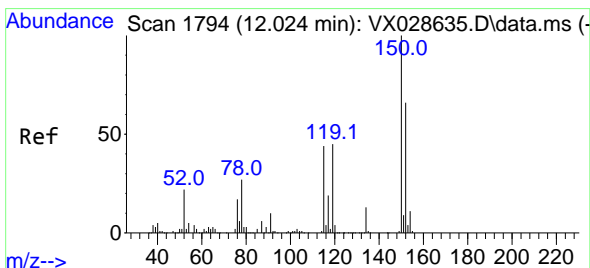
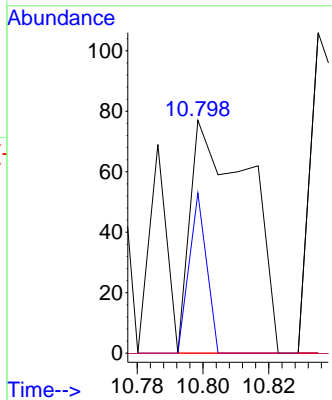
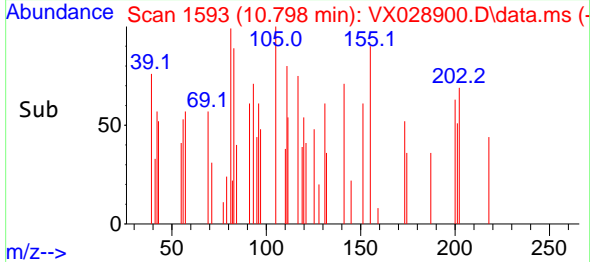


#71
 Bromoform
 Concen: 1.873 ug/l
 RT: 10.798 min Scan# 11
 Delta R.T. 0.000 min
 Lab File: VX028900.D
 Acq: 23 May 2022 17:32

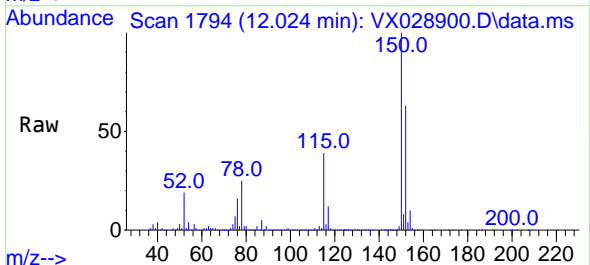
Instrument :
 MSVOA_X
 ClientSampleId :
 TB01-20220516



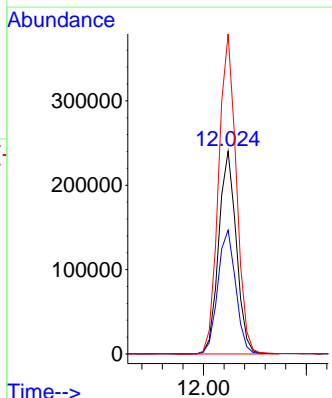
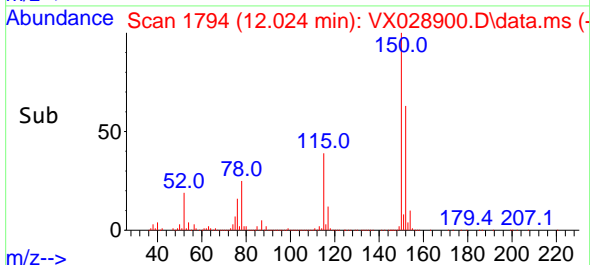
Tgt Ion:173 Resp: 94
 Ion Ratio Lower Upper
 173 100
 175 0.0 24.1 72.2#
 254 0.0 0.1 0.1#

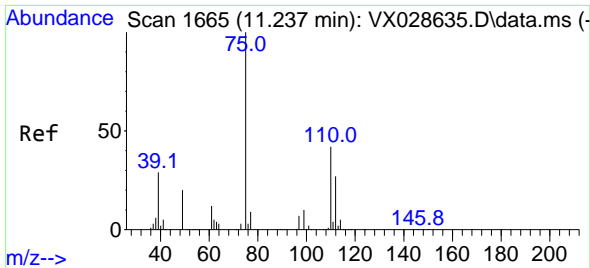


#72
 1,4-Dichlorobenzene-d4
 Concen: 50.000 ug/l
 RT: 12.024 min Scan# 1794
 Delta R.T. -0.000 min
 Lab File: VX028900.D
 Acq: 23 May 2022 17:32



Tgt Ion:152 Resp: 284800
 Ion Ratio Lower Upper
 152 100
 115 62.6 37.5 112.7
 150 159.5 0.0 338.2

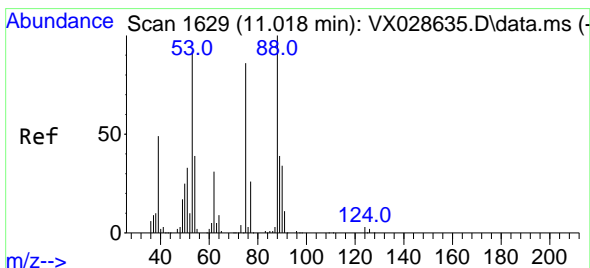
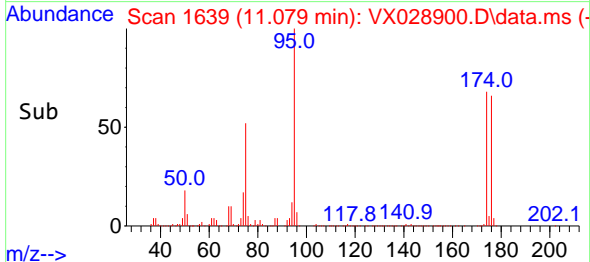
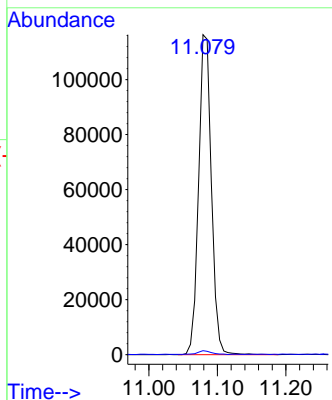
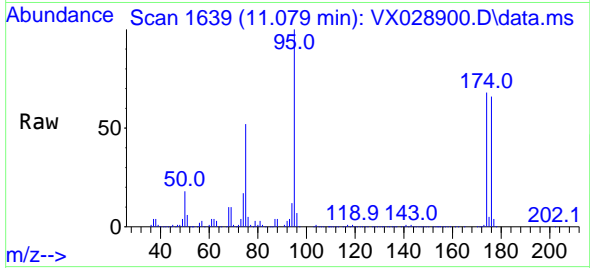




#76
 1,2,3-Trichloropropane
 Concen: 22.655 ug/l
 RT: 11.079 min Scan# 1639
 Delta R.T. -0.158 min
 Lab File: VX028900.D
 Acq: 23 May 2022 17:32

Instrument : MSVOA_X
 ClientSampleId : TB01-20220516

Tgt Ion: 75 Resp: 151102
 Ion Ratio Lower Upper
 75 100
 77 1.3 19.4 58.2#



#81
 trans-1,4-Dichloro-2-butene
 Concen: 66.224 ug/l
 RT: 11.079 min Scan# 1639
 Delta R.T. 0.061 min
 Lab File: VX028900.D
 Acq: 23 May 2022 17:32

Tgt Ion: 75 Resp: 151102
 Ion Ratio Lower Upper
 75 100
 53 0.1 69.0 103.4#
 89 0.0 37.0 55.6#

