

Data Path : Z:\voasrv\HPCHEM1\MSVOA_X\Data\VX052322\
 Data File : VX028904.D
 Acq On : 23 May 2022 19:06
 Operator : JC/MD
 Sample : N2983-01
 Misc : 5.0mL/MSVOA_X/WATER
 ALS Vial : 19 Sample Multiplier: 1

Instrument :
 MSVOA_X
 ClientSampleId :
 TB03-20220520

Quant Time: May 24 05:36:22 2022
 Quant Method : Z:\voasrv\HPCHEM1\MSVOA_X\Method\82X051222W.M
 Quant Title : SW846 8260
 QLast Update : Thu May 12 14:58:53 2022
 Response via : Initial Calibration

Compound	R.T.	QIon	Response	Conc	Units	Dev(Min)

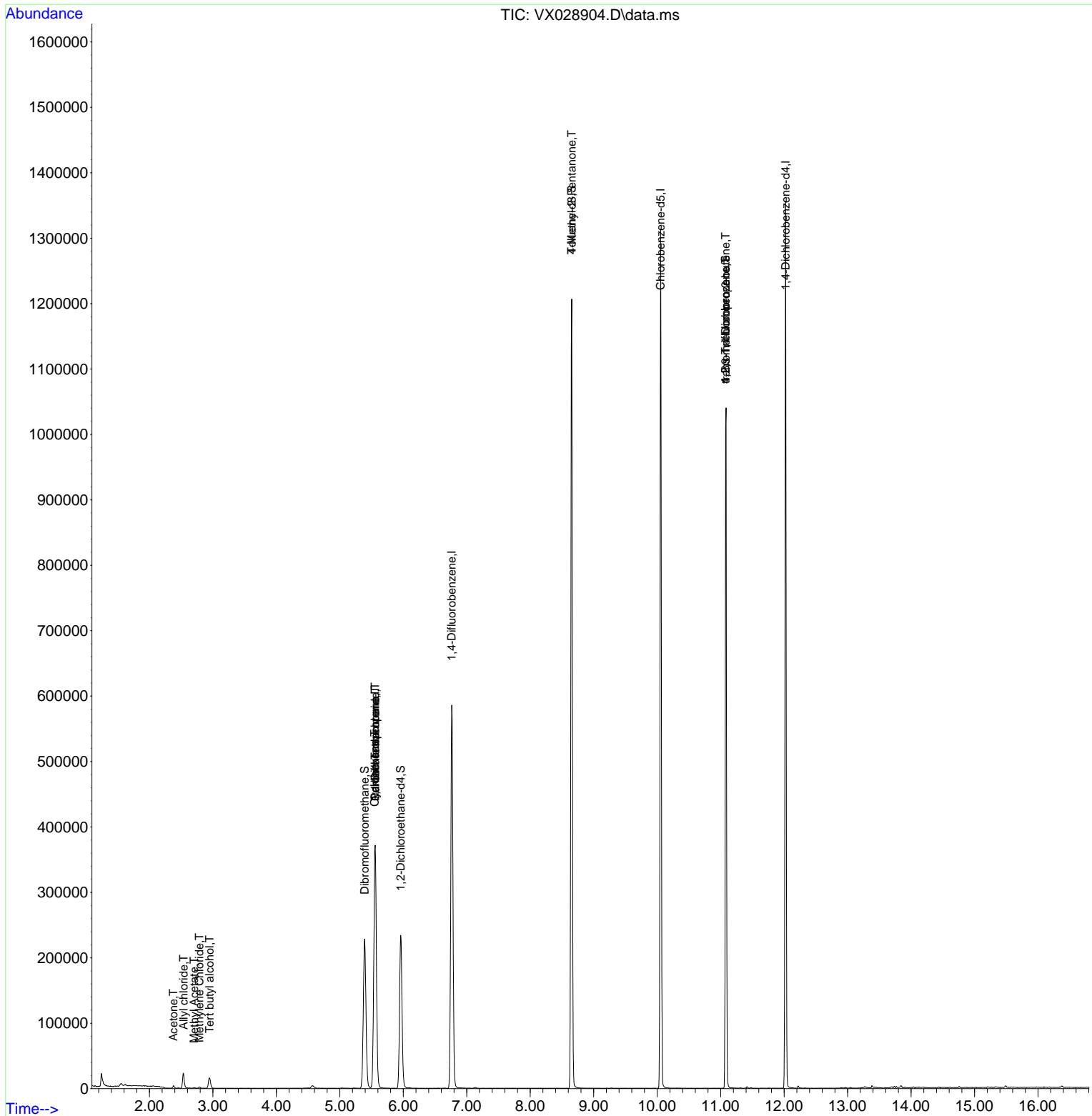
Internal Standards						
1) Pentafluorobenzene	5.556	168	351436	50.000	ug/l	0.00
34) 1,4-Difluorobenzene	6.763	114	614399	50.000	ug/l	0.00
63) Chlorobenzene-d5	10.055	117	586670	50.000	ug/l	0.00
72) 1,4-Dichlorobenzene-d4	12.024	152	268318	50.000	ug/l	0.00
System Monitoring Compounds						
33) 1,2-Dichloroethane-d4	5.958	65	235058	48.794	ug/l	0.00
Spiked Amount	50.000	Range	61 - 141	Recovery	=	97.580%
35) Dibromofluoromethane	5.391	113	199021	49.441	ug/l	0.00
Spiked Amount	50.000	Range	69 - 133	Recovery	=	98.880%
50) Toluene-d8	8.653	98	735226	48.444	ug/l	0.00
Spiked Amount	50.000	Range	65 - 126	Recovery	=	96.880%
62) 4-Bromofluorobenzene	11.079	95	292340	51.572	ug/l	0.00
Spiked Amount	50.000	Range	58 - 135	Recovery	=	103.140%
Target Compounds						
					Qvalue	
5) Bromomethane	1.611	94	1106	Below Cal	#	80
6) Chloroethane	1.672	64	353	Below Cal	#	58
11) Tert butyl alcohol	2.947	59	9823	1.683	ug/l #	79
14) Allyl chloride	2.538	41	2259	0.387	ug/l #	52
16) Acetone	2.380	43	3758	1.818	ug/l	88
18) Methyl Acetate	2.703	43	1071	0.207	ug/l #	73
20) Methylene Chloride	2.788	84	918	0.212	ug/l	94
31) Cyclohexane	5.550	56	6843	1.023	ug/l #	6
36) 1,1-Dichloropropene	5.556	75	26780	4.429	ug/l #	50
38) Carbon Tetrachloride	5.556	117	36013	5.919	ug/l #	15
51) 4-Methyl-2-Pentanone	8.653	43	2890	0.444	ug/l #	1
76) 1,2,3-Trichloropropane	11.079	75	146959	23.387	ug/l #	38
81) trans-1,4-Dichloro-2-b...	11.079	75	146959	68.239	ug/l #	15

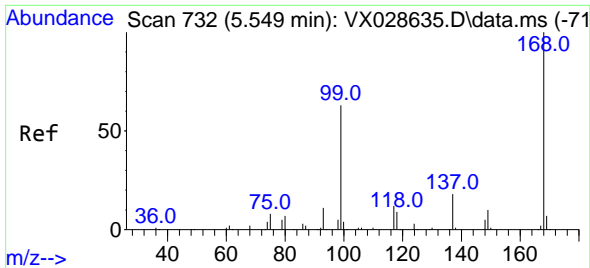
(#) = qualifier out of range (m) = manual integration (+) = signals summed

Data Path : Z:\voasrv\HPCHEM1\MSVOA_X\Data\VX052322\
 Data File : VX028904.D
 Acq On : 23 May 2022 19:06
 Operator : JC/MD
 Sample : N2983-01
 Misc : 5.0mL/MSVOA_X/WATER
 ALS Vial : 19 Sample Multiplier: 1

Instrument :
 MSVOA_X
 ClientSampleId :
 TB03-20220520

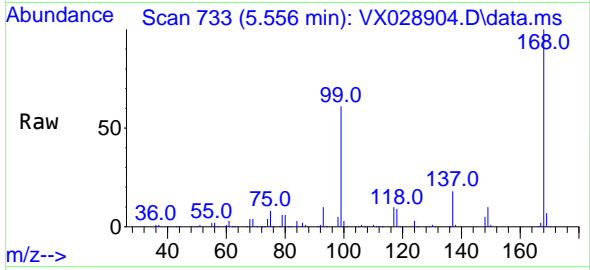
Quant Time: May 24 05:36:22 2022
 Quant Method : Z:\voasrv\HPCHEM1\MSVOA_X\Method\82X051222W.M
 Quant Title : SW846 8260
 QLast Update : Thu May 12 14:58:53 2022
 Response via : Initial Calibration



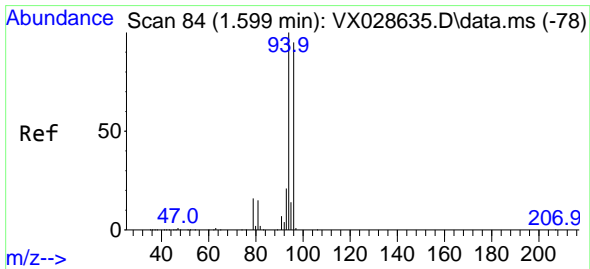
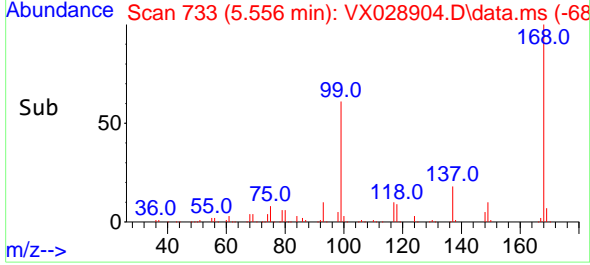
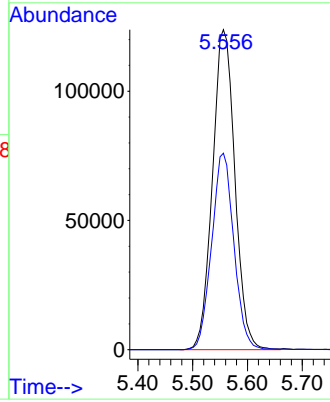


#1
 Pentafluorobenzene
 Concen: 50.000 ug/l
 RT: 5.556 min Scan# 71
 Delta R.T. 0.007 min
 Lab File: VX028904.D
 Acq: 23 May 2022 19:06

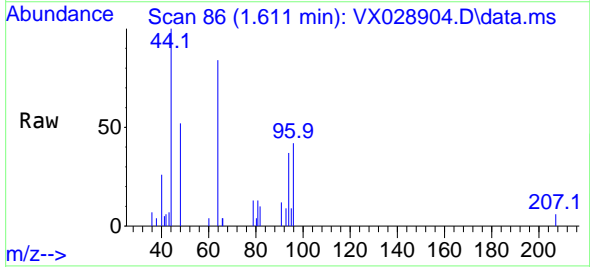
Instrument : MSVOA_X
 ClientSampleId : TB03-20220520



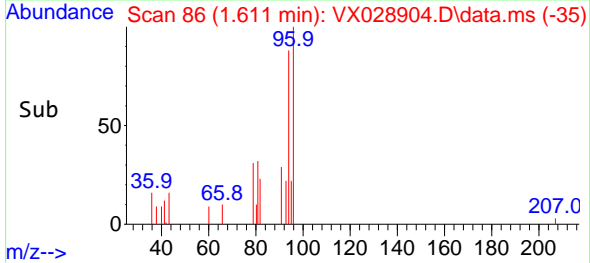
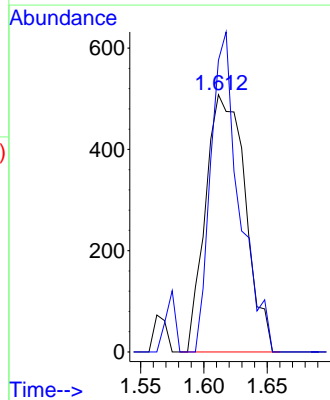
Tgt Ion:168 Resp: 351436
 Ion Ratio Lower Upper
 168 100
 99 61.4 41.7 62.5

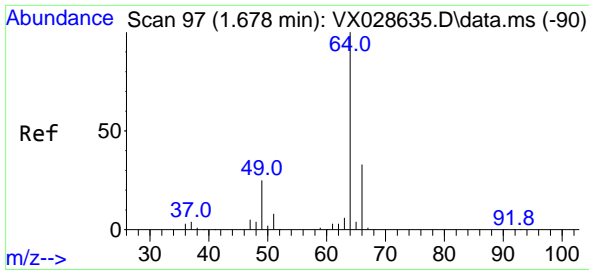


#5
 Bromomethane
 Concen: Below Cal
 RT: 1.611 min Scan# 86
 Delta R.T. 0.012 min
 Lab File: VX028904.D
 Acq: 23 May 2022 19:06



Tgt Ion: 94 Resp: 1106
 Ion Ratio Lower Upper
 94 100
 96 113.4 75.3 112.9#

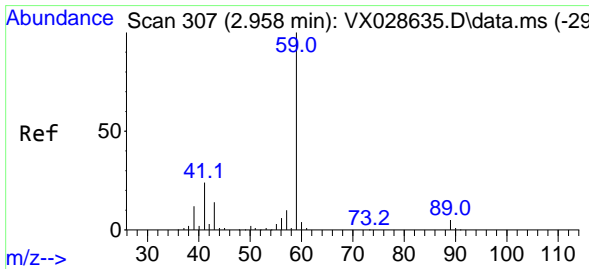
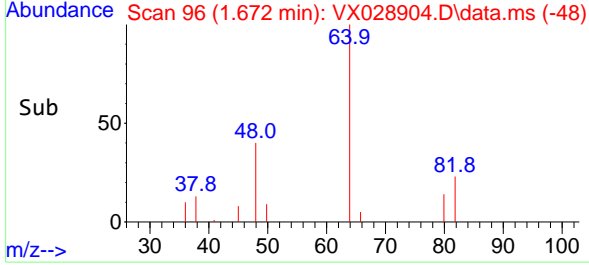
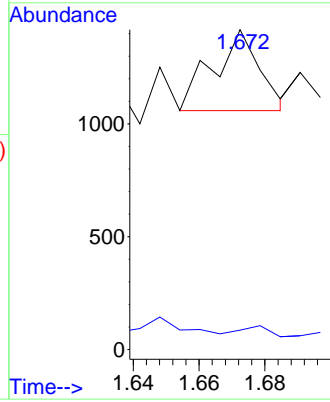
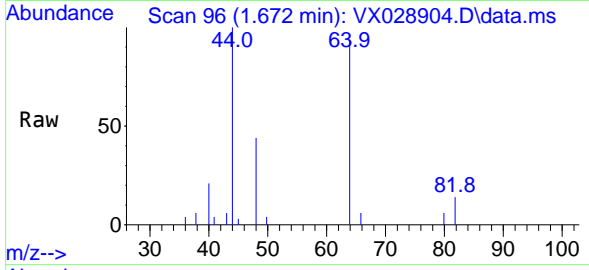




#6
 Chloroethane
 Concen: Below Cal
 RT: 1.672 min Scan# 90
 Delta R.T. -0.006 min
 Lab File: VX028904.D
 Acq: 23 May 2022 19:06

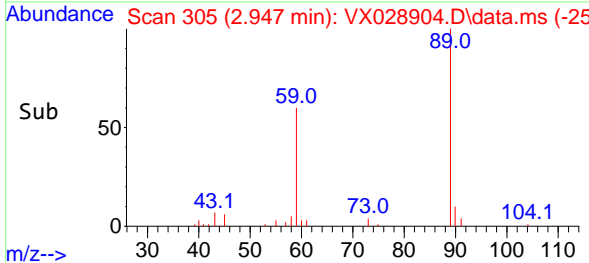
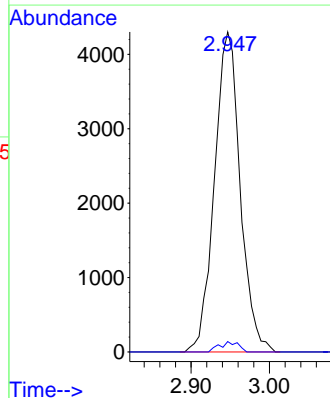
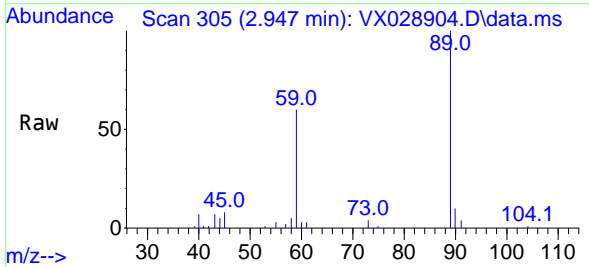
Instrument : MSVOA_X
 ClientSampleId : TB03-20220520

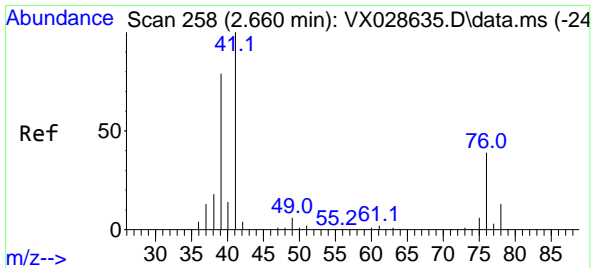
Tgt Ion: 64 Resp: 353
 Ion Ratio Lower Upper
 64 100
 66 8.1 25.3 37.9#



#11
 Tert butyl alcohol
 Concen: 1.683 ug/l
 RT: 2.947 min Scan# 305
 Delta R.T. -0.011 min
 Lab File: VX028904.D
 Acq: 23 May 2022 19:06

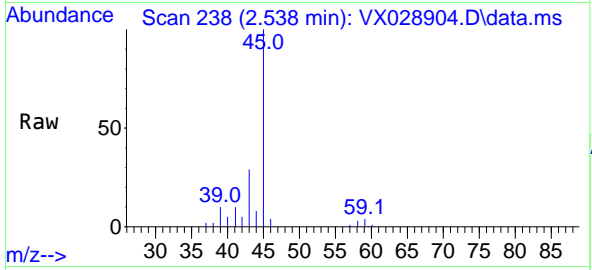
Tgt Ion: 59 Resp: 9823
 Ion Ratio Lower Upper
 59 100
 57 2.4 8.3 12.5#



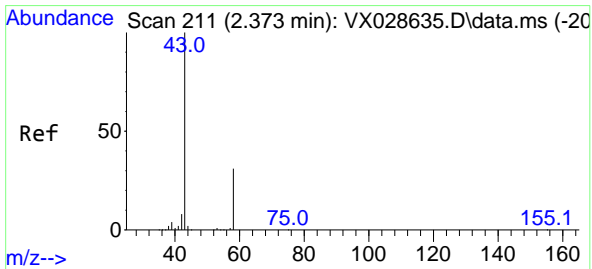
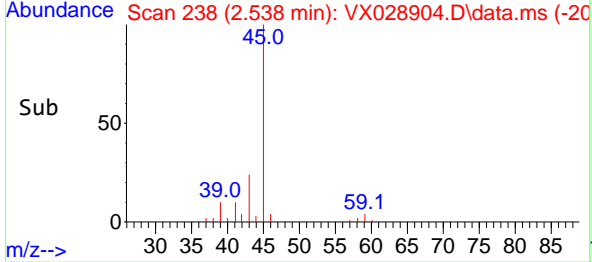
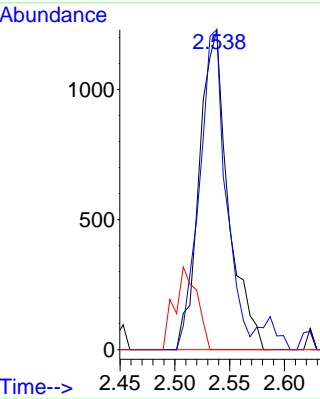


#14
 Allyl chloride
 Concen: 0.387 ug/l
 RT: 2.538 min Scan# 212
 Delta R.T. -0.122 min
 Lab File: VX028904.D
 Acq: 23 May 2022 19:06

Instrument : MSVOA_X
 ClientSampleId : TB03-20220520

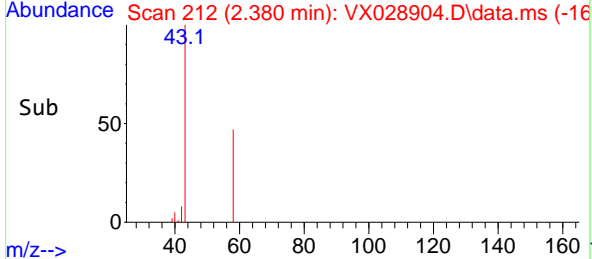
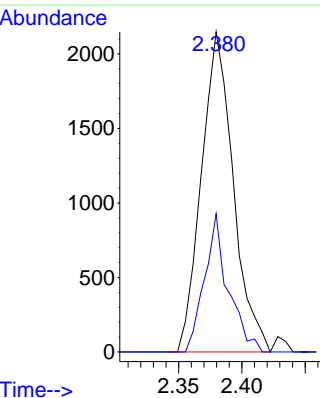
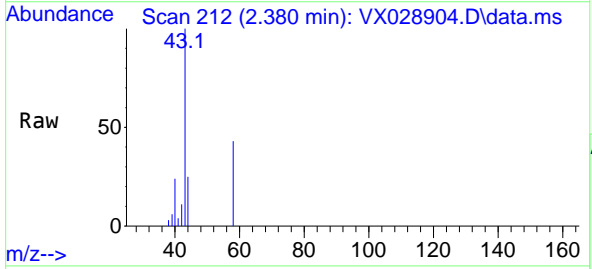


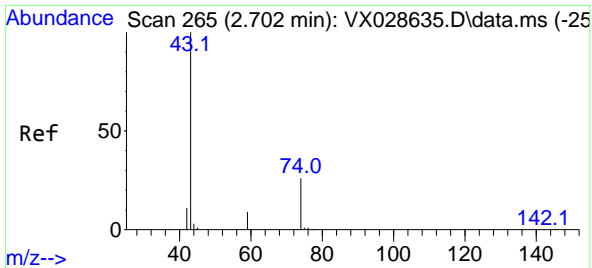
Tgt Ion: 41 Resp: 2259
 Ion Ratio Lower Upper
 41 100
 39 91.7 50.4 75.6#
 76 0.0 32.7 49.1#



#16
 Acetone
 Concen: 1.818 ug/l
 RT: 2.380 min Scan# 212
 Delta R.T. 0.007 min
 Lab File: VX028904.D
 Acq: 23 May 2022 19:06

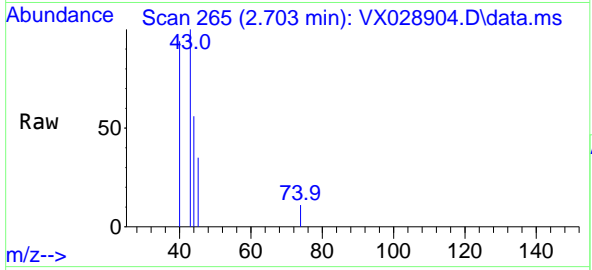
Tgt Ion: 43 Resp: 3758
 Ion Ratio Lower Upper
 43 100
 58 43.2 28.8 43.2



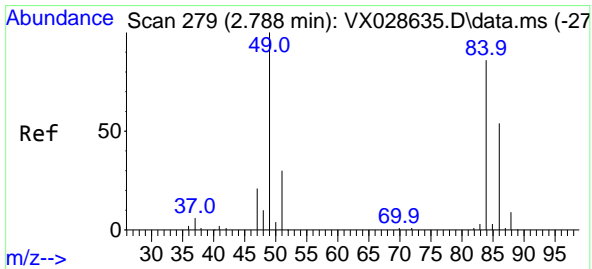
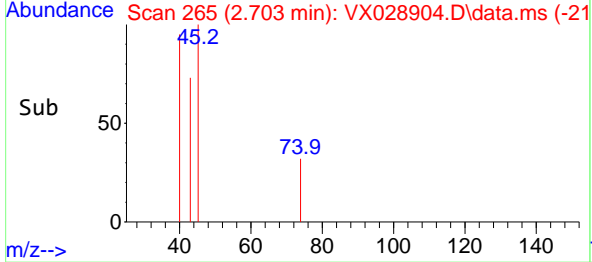
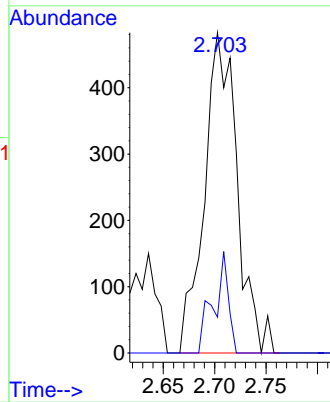


#18
 Methyl Acetate
 Concen: 0.207 ug/l
 RT: 2.703 min Scan# 20
 Delta R.T. 0.001 min
 Lab File: VX028904.D
 Acq: 23 May 2022 19:06

Instrument : MSVOA_X
 ClientSampleId : TB03-20220520

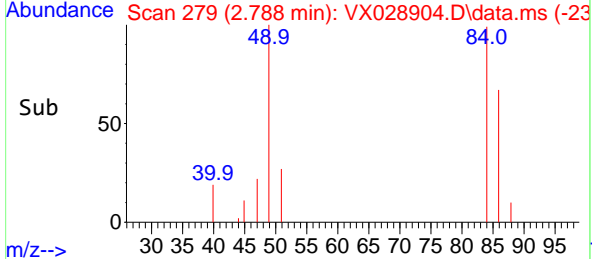
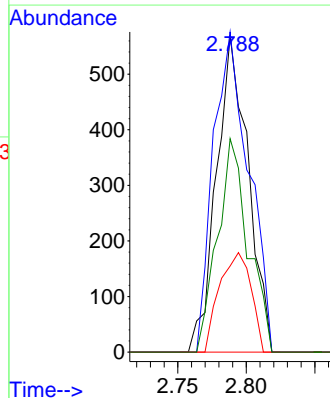
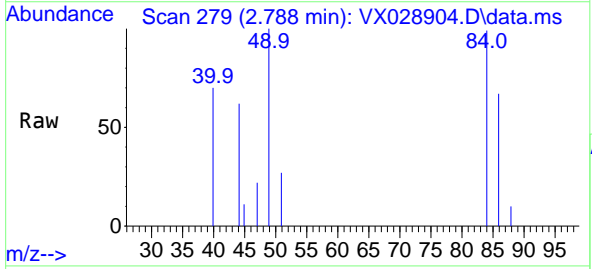


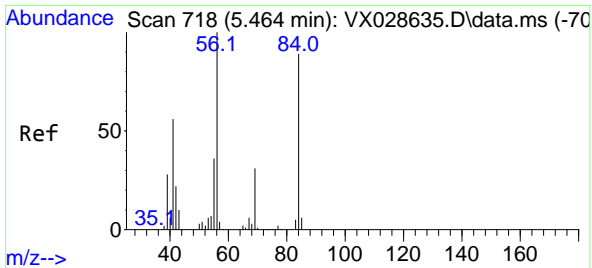
Tgt Ion: 43 Resp: 1071
 Ion Ratio Lower Upper
 43 100
 74 14.3 22.8 34.2#



#20
 Methylene Chloride
 Concen: 0.212 ug/l
 RT: 2.788 min Scan# 279
 Delta R.T. 0.000 min
 Lab File: VX028904.D
 Acq: 23 May 2022 19:06

Tgt Ion: 84 Resp: 918
 Ion Ratio Lower Upper
 84 100
 49 101.1 85.5 128.3
 51 27.2 26.6 39.8
 86 67.4 51.5 77.3



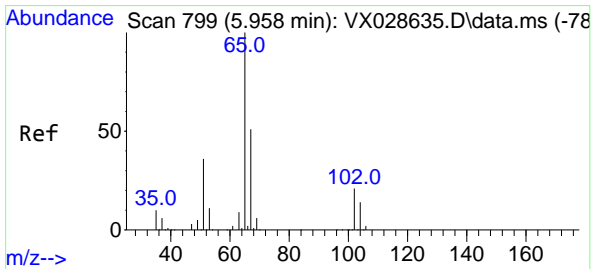
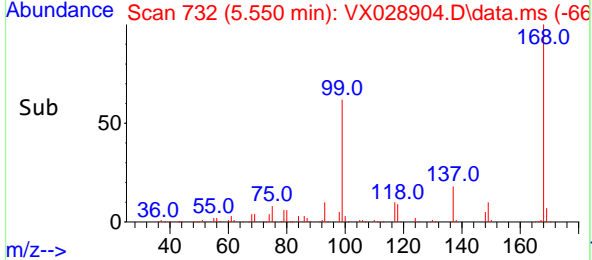
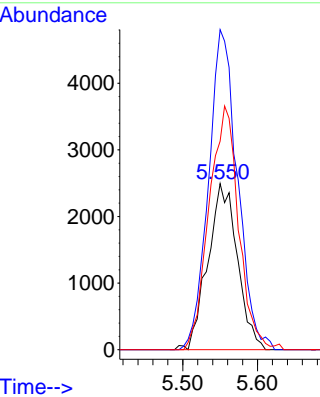
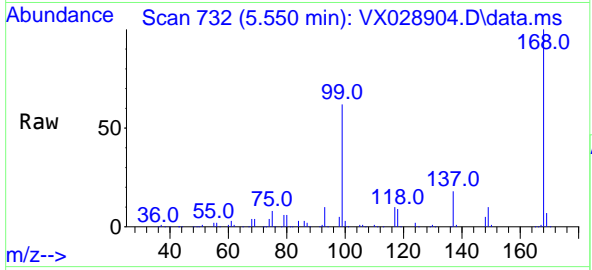


#31
 Cyclohexane
 Concen: 1.023 ug/l
 RT: 5.550 min Scan# 718
 Delta R.T. 0.086 min
 Lab File: VX028904.D
 Acq: 23 May 2022 19:06

Instrument : MSVOA_X
 ClientSampleId : TB03-20220520

Tgt Ion: 56 Resp: 6843

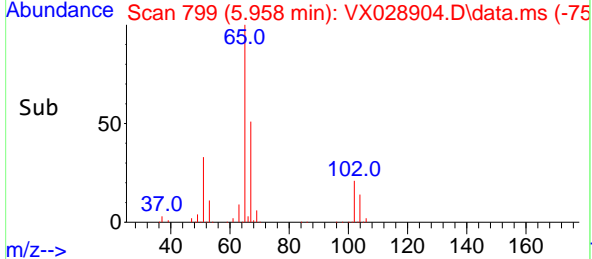
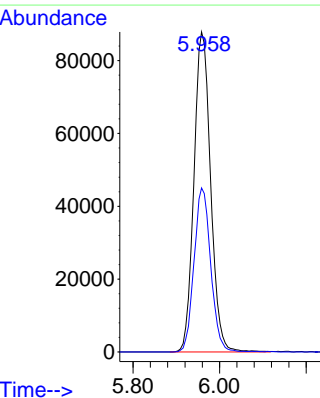
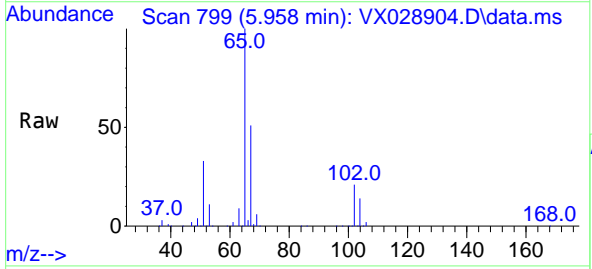
Ion	Ratio	Lower	Upper
56	100		
69	192.7	26.7	40.1#
84	125.5	77.2	115.8#

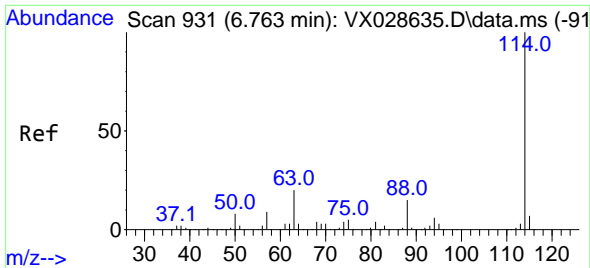


#33
 1,2-Dichloroethane-d4
 Concen: 48.794 ug/l
 RT: 5.958 min Scan# 799
 Delta R.T. 0.000 min
 Lab File: VX028904.D
 Acq: 23 May 2022 19:06

Tgt Ion: 65 Resp: 235058

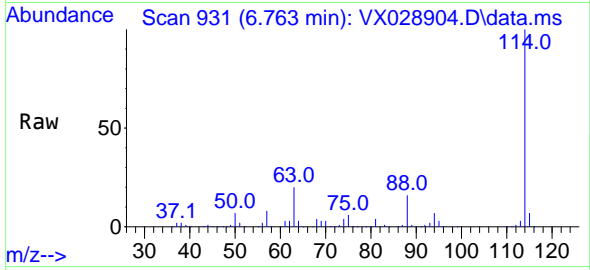
Ion	Ratio	Lower	Upper
65	100		
67	51.2	0.0	107.4



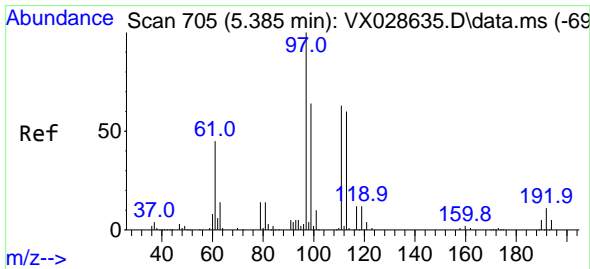
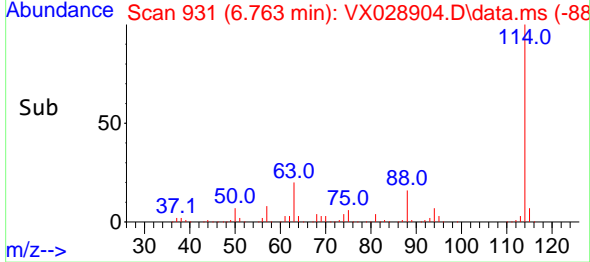
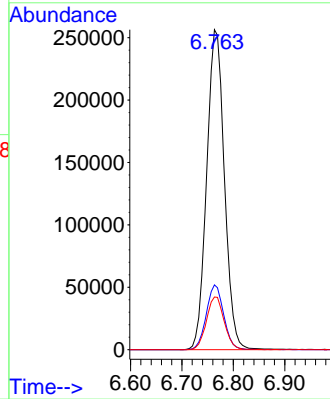


#34
 1,4-Difluorobenzene
 Concen: 50.000 ug/l
 RT: 6.763 min Scan# 911
 Delta R.T. 0.000 min
 Lab File: VX028904.D
 Acq: 23 May 2022 19:06

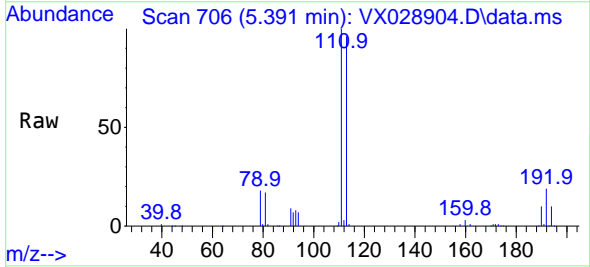
Instrument : MSVOA_X
 ClientSampleId : TB03-20220520



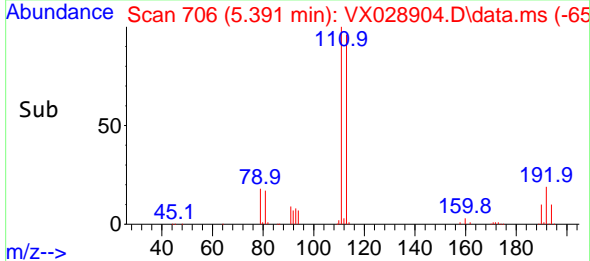
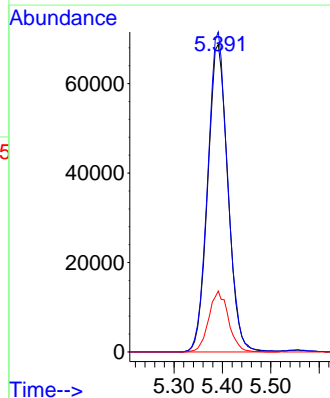
Tgt Ion:114 Resp: 614399
 Ion Ratio Lower Upper
 114 100
 63 20.3 0.0 36.8
 88 16.5 0.0 32.4

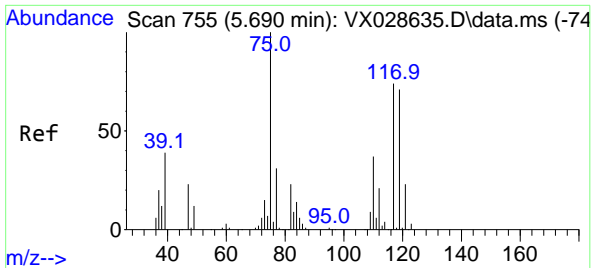


#35
 Dibromofluoromethane
 Concen: 49.441 ug/l
 RT: 5.391 min Scan# 706
 Delta R.T. 0.006 min
 Lab File: VX028904.D
 Acq: 23 May 2022 19:06



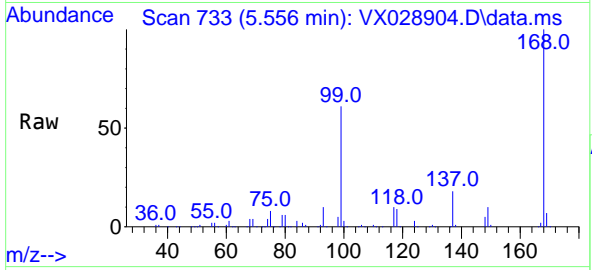
Tgt Ion:113 Resp: 199021
 Ion Ratio Lower Upper
 113 100
 111 103.2 82.8 124.2
 192 19.3 16.9 25.3



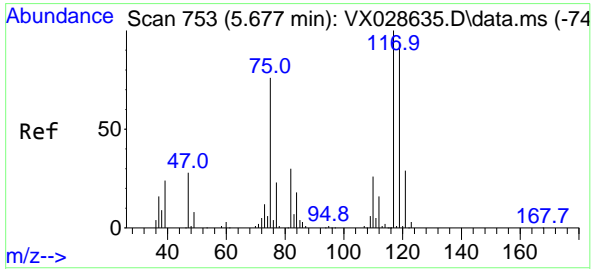
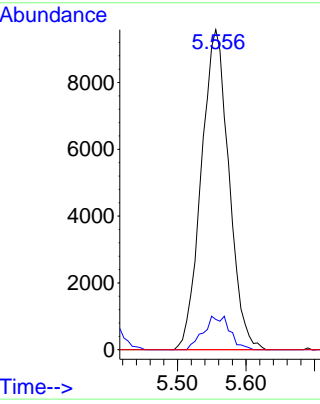
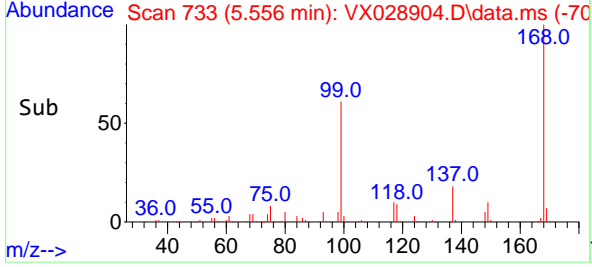


#36
 1,1-Dichloropropene
 Concen: 4.429 ug/l
 RT: 5.556 min Scan# 733
 Delta R.T. -0.134 min
 Lab File: VX028904.D
 Acq: 23 May 2022 19:06

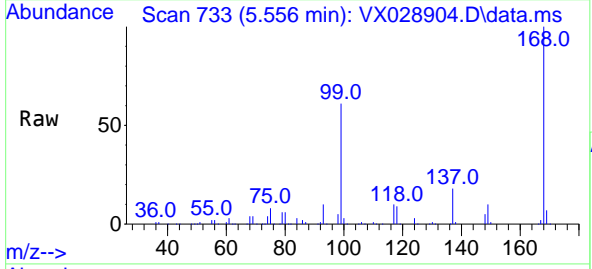
Instrument : MSVOA_X
 ClientSampleId : TB03-20220520



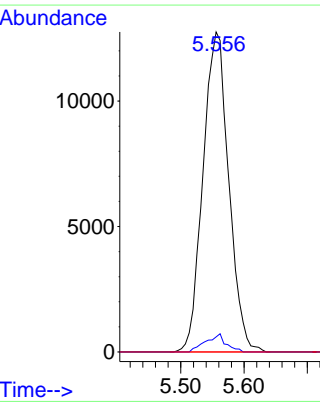
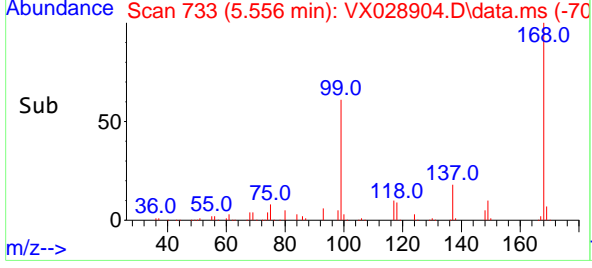
Tgt Ion: 75 Resp: 26780
 Ion Ratio Lower Upper
 75 100
 110 9.9 18.3 54.8#
 77 0.0 24.8 37.2#

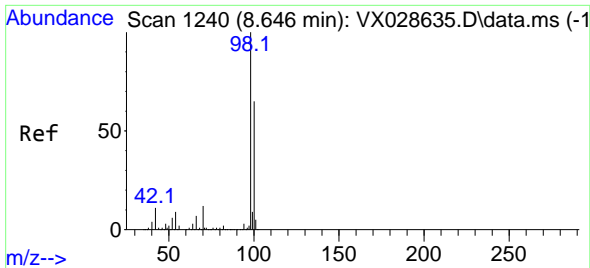


#38
 Carbon Tetrachloride
 Concen: 5.919 ug/l
 RT: 5.556 min Scan# 733
 Delta R.T. -0.121 min
 Lab File: VX028904.D
 Acq: 23 May 2022 19:06



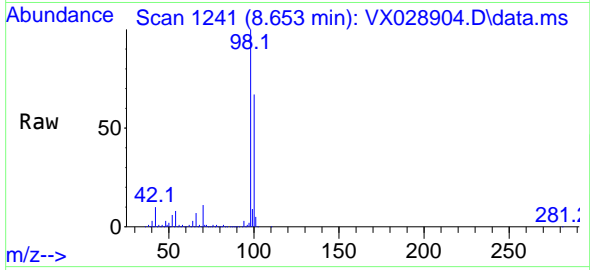
Tgt Ion: 117 Resp: 36013
 Ion Ratio Lower Upper
 117 100
 119 4.7 77.3 115.9#
 121 0.0 24.2 36.2#



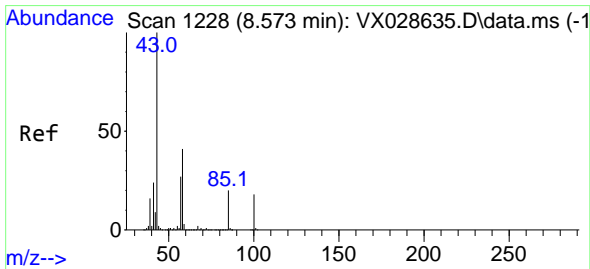
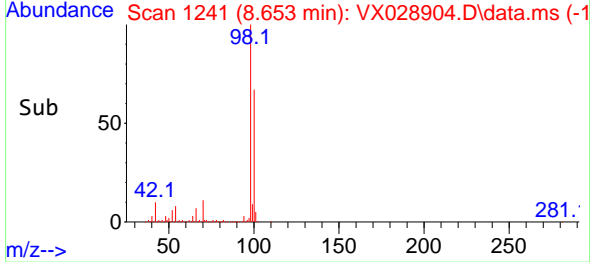
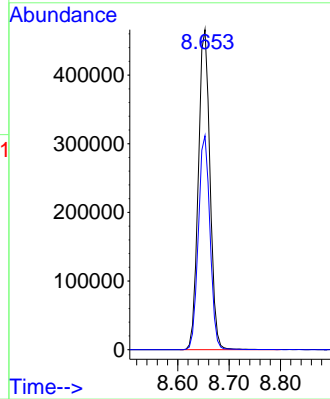


#50
 Toluene-d8
 Concen: 48.444 ug/l
 RT: 8.653 min Scan# 1241
 Delta R.T. 0.007 min
 Lab File: VX028904.D
 Acq: 23 May 2022 19:06

Instrument : MSVOA_X
 ClientSampleId : TB03-20220520

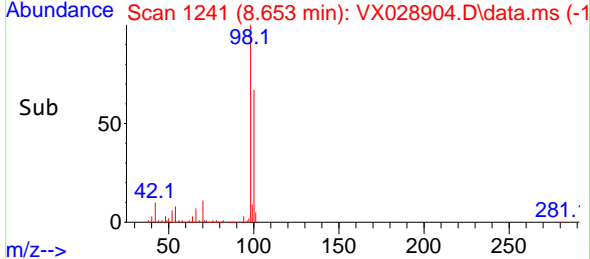
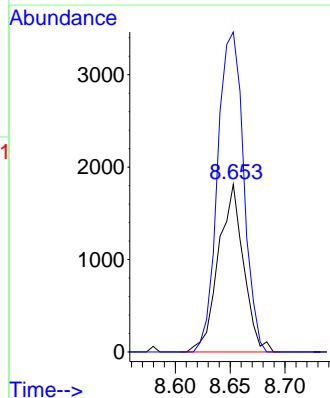
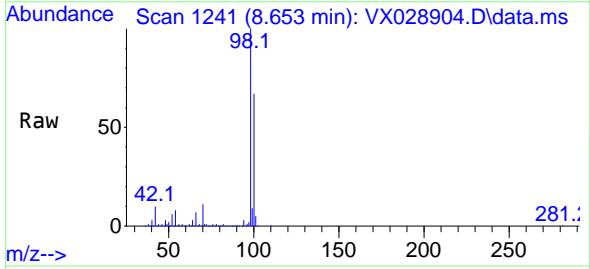


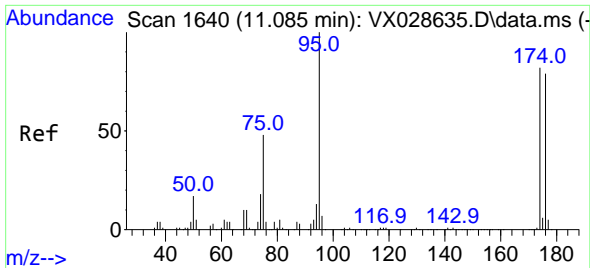
Tgt Ion: 98 Resp: 735226
 Ion Ratio Lower Upper
 98 100
 100 66.6 52.6 78.8



#51
 4-Methyl-2-Pentanone
 Concen: 0.444 ug/l
 RT: 8.653 min Scan# 1241
 Delta R.T. 0.080 min
 Lab File: VX028904.D
 Acq: 23 May 2022 19:06

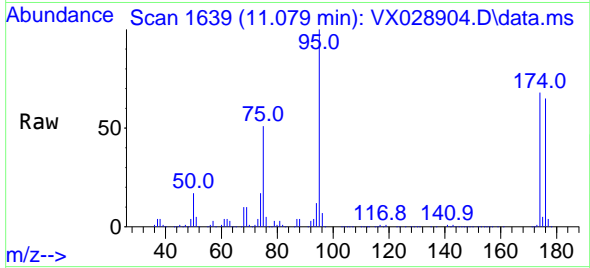
Tgt Ion: 43 Resp: 2890
 Ion Ratio Lower Upper
 43 100
 58 197.5 36.1 54.1#



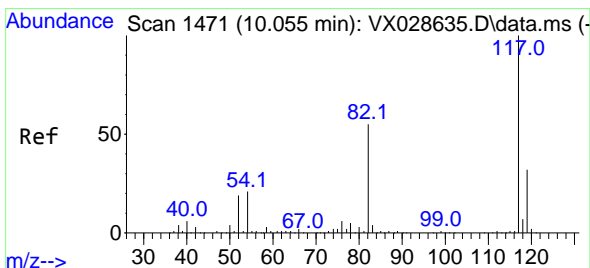
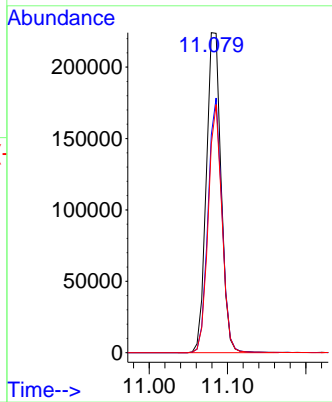
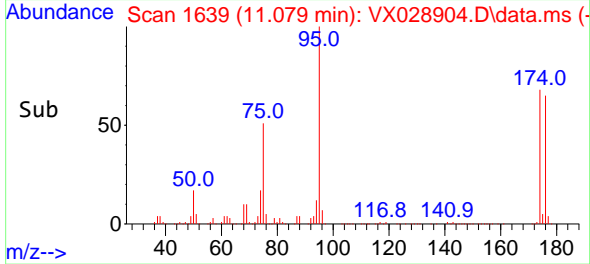


#62
 4-Bromofluorobenzene
 Concen: 51.572 ug/l
 RT: 11.079 min Scan# 1639
 Delta R.T. -0.006 min
 Lab File: VX028904.D
 Acq: 23 May 2022 19:06

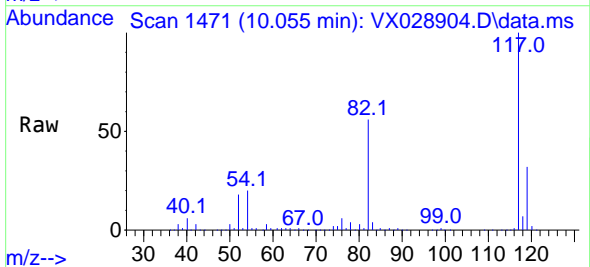
Instrument : MSVOA_X
 ClientSampleId : TB03-20220520



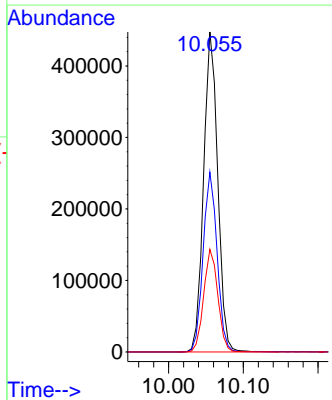
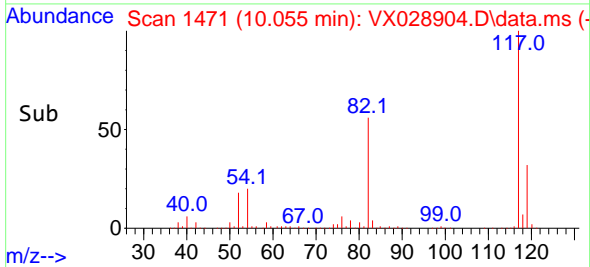
Tgt Ion: 95 Resp: 292340
 Ion Ratio Lower Upper
 95 100
 174 75.2 0.0 163.0
 176 72.3 0.0 155.0

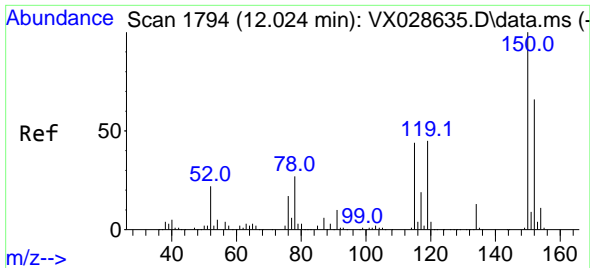


#63
 Chlorobenzene-d5
 Concen: 50.000 ug/l
 RT: 10.055 min Scan# 1471
 Delta R.T. 0.000 min
 Lab File: VX028904.D
 Acq: 23 May 2022 19:06



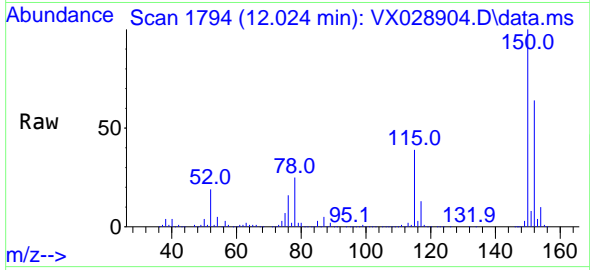
Tgt Ion: 117 Resp: 586670
 Ion Ratio Lower Upper
 117 100
 82 56.2 41.8 62.8
 119 32.0 24.8 37.2



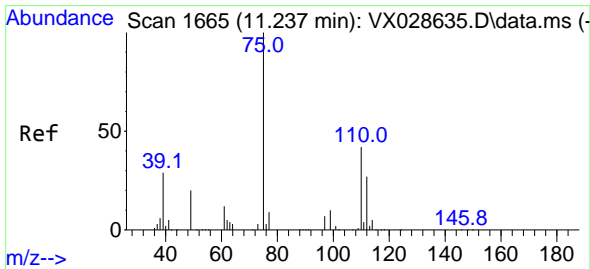
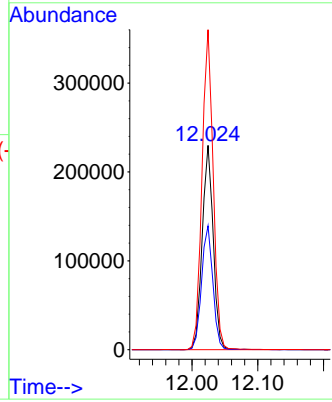
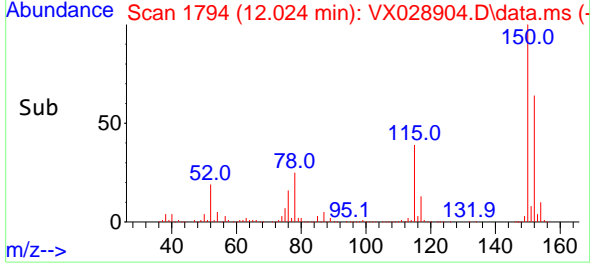


#72
 1,4-Dichlorobenzene-d4
 Concen: 50.000 ug/l
 RT: 12.024 min Scan# 11
 Delta R.T. 0.000 min
 Lab File: VX028904.D
 Acq: 23 May 2022 19:06

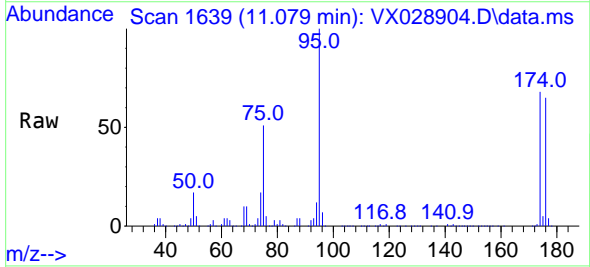
Instrument :
 MSVOA_X
 ClientSampleId :
 TB03-20220520



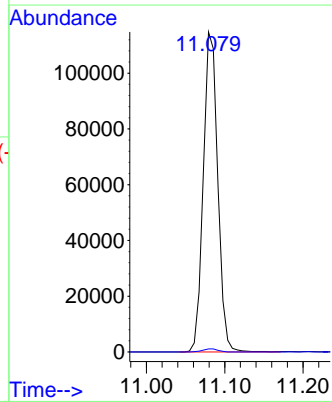
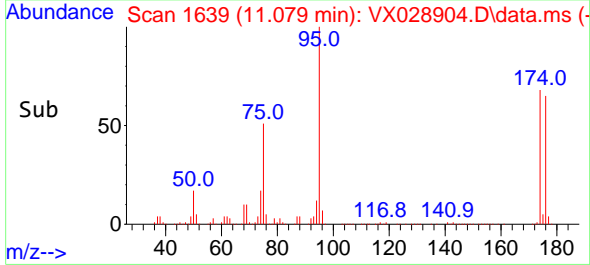
Tgt Ion:152 Resp: 268318
 Ion Ratio Lower Upper
 152 100
 115 62.1 37.5 112.7
 150 158.6 0.0 338.2

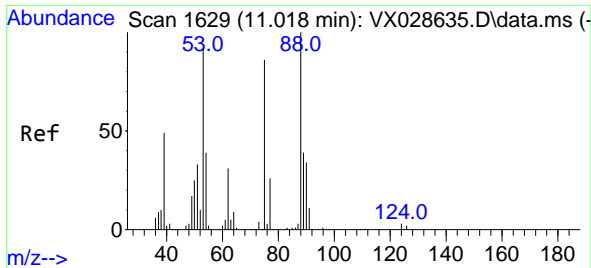


#76
 1,2,3-Trichloropropane
 Concen: 23.387 ug/l
 RT: 11.079 min Scan# 1639
 Delta R.T. -0.158 min
 Lab File: VX028904.D
 Acq: 23 May 2022 19:06



Tgt Ion: 75 Resp: 146959
 Ion Ratio Lower Upper
 75 100
 77 1.0 19.4 58.2#





#81
 trans-1,4-Dichloro-2-butene
 Concen: 68.239 ug/l
 RT: 11.079 min Scan# 10
 Delta R.T. 0.061 min
 Lab File: VX028904.D
 Acq: 23 May 2022 19:06

Instrument : MSVOA_X
 ClientSampleId : TB03-20220520

Tgt Ion: 75 Resp: 146959

Ion	Ratio	Lower	Upper
75	100		
53	0.0	69.0	103.4#
89	0.1	37.0	55.6#

