

Data Path : Z:\voasrv\HPCHEM1\MSVOA_X\Data\VX052322\
 Data File : VX028906.D
 Acq On : 23 May 2022 19:53
 Operator : JC/MD
 Sample : N2983-03
 Misc : 5.0mL/MSVOA_X/WATER
 ALS Vial : 21 Sample Multiplier: 1

Instrument :
 MSVOA_X
 ClientSampleId :
 16BR-20220520

Quant Time: May 24 05:37:08 2022
 Quant Method : Z:\voasrv\HPCHEM1\MSVOA_X\Method\82X051222W.M
 Quant Title : SW846 8260
 QLast Update : Thu May 12 14:58:53 2022
 Response via : Initial Calibration

Compound	R.T.	QIon	Response	Conc	Units	Dev(Min)

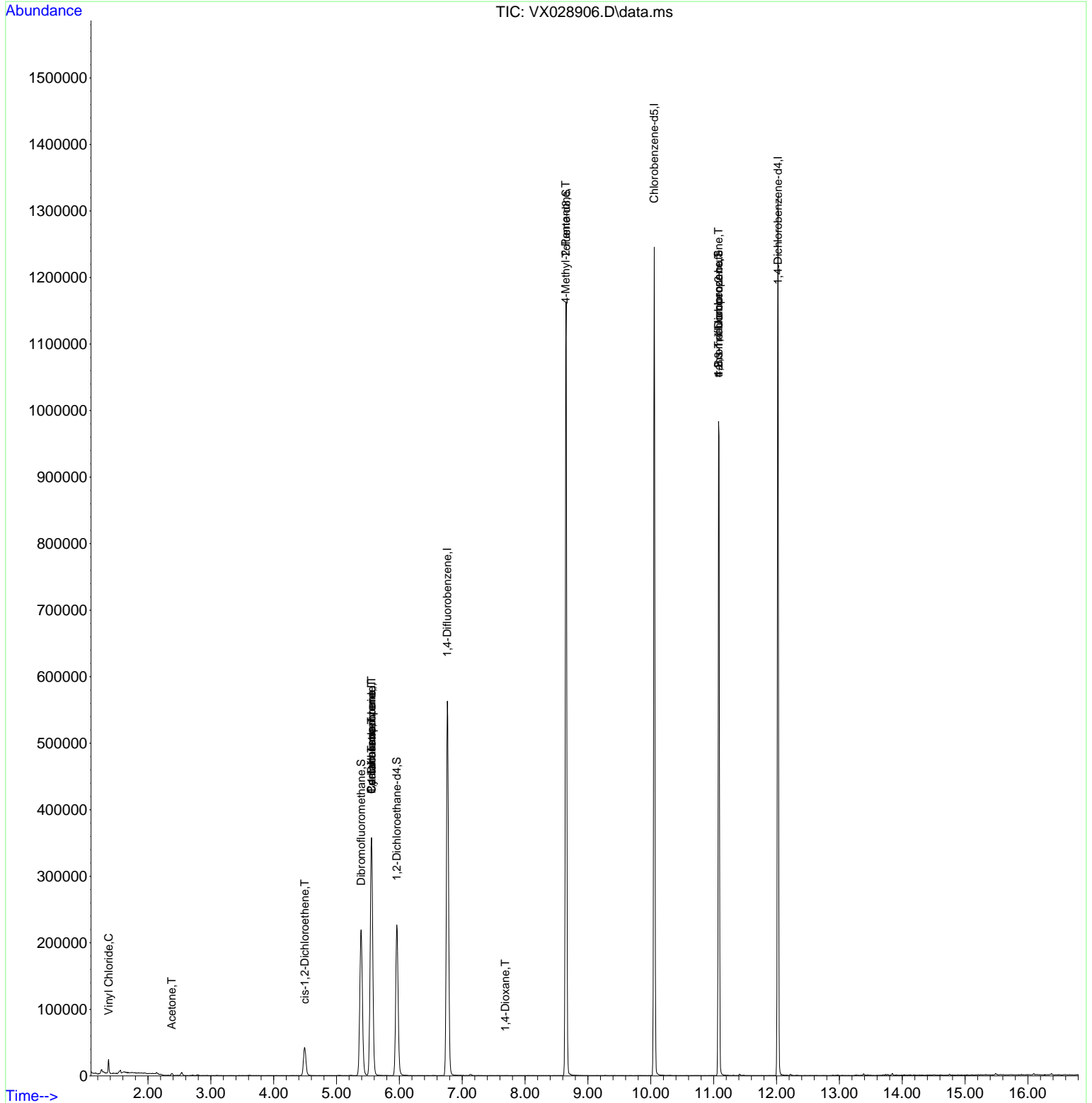
Internal Standards						
1) Pentafluorobenzene	5.556	168	332456	50.000	ug/l	# 0.00
34) 1,4-Difluorobenzene	6.763	114	585528	50.000	ug/l	0.00
63) Chlorobenzene-d5	10.055	117	557627	50.000	ug/l	0.00
72) 1,4-Dichlorobenzene-d4	12.024	152	257983	50.000	ug/l	0.00
System Monitoring Compounds						
33) 1,2-Dichloroethane-d4	5.958	65	227843	49.996	ug/l	0.00
Spiked Amount	50.000	Range 61 - 141	Recovery	=	100.000%	
35) Dibromofluoromethane	5.391	113	193126	50.342	ug/l	0.00
Spiked Amount	50.000	Range 69 - 133	Recovery	=	100.680%	
50) Toluene-d8	8.653	98	692677	47.891	ug/l	0.00
Spiked Amount	50.000	Range 65 - 126	Recovery	=	95.780%	
62) 4-Bromofluorobenzene	11.079	95	278974	51.640	ug/l	0.00
Spiked Amount	50.000	Range 58 - 135	Recovery	=	103.280%	
Target Compounds						
						Qvalue
4) Vinyl Chloride	1.374	62	12734	2.882	ug/l	93
5) Bromomethane	1.618	94	962	Below Cal		95
6) Chloroethane	1.642	64	181	Below Cal	#	43
11) Tert butyl alcohol	2.947	59	157	Below Cal	#	72
16) Acetone	2.380	43	3413	1.745	ug/l	94
27) cis-1,2-Dichloroethene	4.495	96	27465	6.068	ug/l	93
31) Cyclohexane	5.556	56	6600	1.043	ug/l	# 3
36) 1,1-Dichloropropene	5.556	75	26169	4.542	ug/l	# 49
38) Carbon Tetrachloride	5.556	117	34888	6.016	ug/l	# 16
49) 1,4-Dioxane	7.684	88	54	0.475	ug/l	# 36
51) 4-Methyl-2-Pentanone	8.647	43	2622	0.423	ug/l	# 1
76) 1,2,3-Trichloropropane	11.079	75	141175	23.367	ug/l	# 38
81) trans-1,4-Dichloro-2-b...	11.079	75	141175	68.183	ug/l	# 15

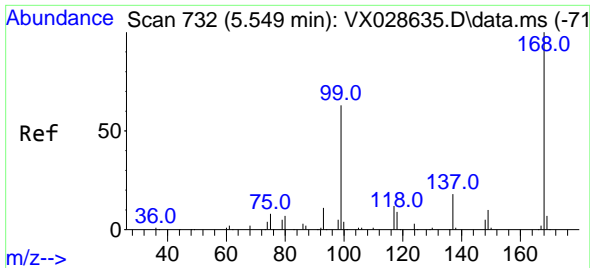
(#) = qualifier out of range (m) = manual integration (+) = signals summed

Data Path : Z:\voasrv\HPCHEM1\MSVOA_X\Data\VX052322\
 Data File : VX028906.D
 Acq On : 23 May 2022 19:53
 Operator : JC/MD
 Sample : N2983-03
 Misc : 5.0mL/MSVOA_X/WATER
 ALS Vial : 21 Sample Multiplier: 1

Instrument :
 MSVOA_X
ClientSampleId :
 16BR-20220520

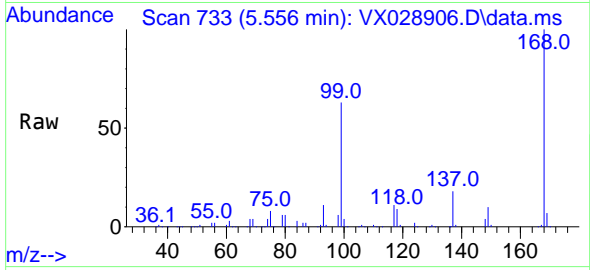
Quant Time: May 24 05:37:08 2022
 Quant Method : Z:\voasrv\HPCHEM1\MSVOA_X\Method\82X051222W.M
 Quant Title : SW846 8260
 QLast Update : Thu May 12 14:58:53 2022
 Response via : Initial Calibration



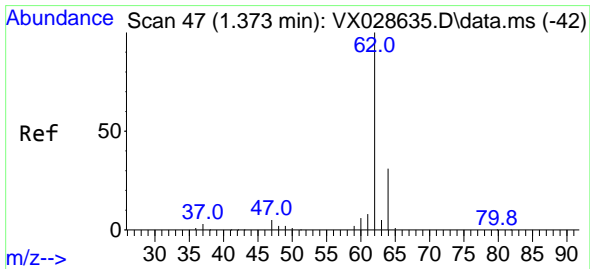
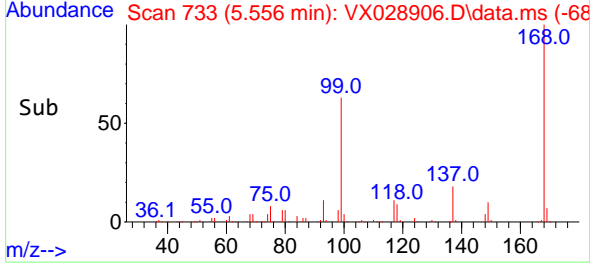
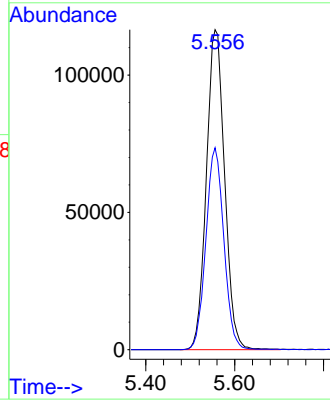


#1
 Pentafluorobenzene
 Concen: 50.000 ug/l
 RT: 5.556 min Scan# 71
 Delta R.T. 0.007 min
 Lab File: VX028906.D
 Acq: 23 May 2022 19:53

Instrument :
 MSVOA_X
 ClientSampleId :
 16BR-20220520

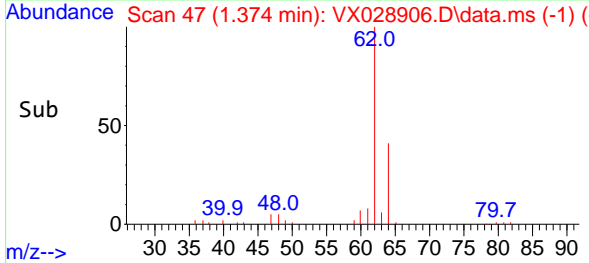
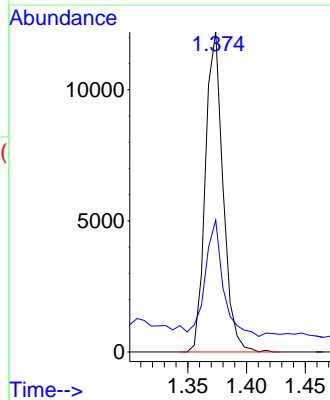
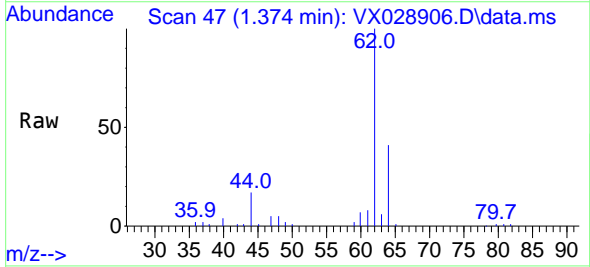


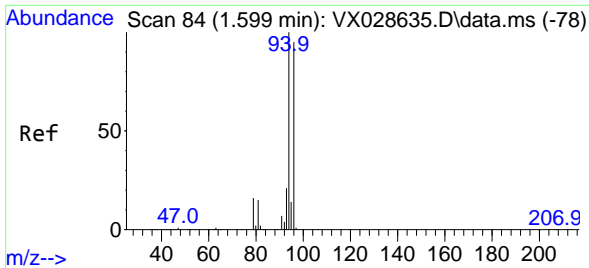
Tgt Ion:168 Resp: 332456
 Ion Ratio Lower Upper
 168 100
 99 63.1 41.7 62.5#



#4
 Vinyl Chloride
 Concen: 2.882 ug/l
 RT: 1.374 min Scan# 47
 Delta R.T. 0.001 min
 Lab File: VX028906.D
 Acq: 23 May 2022 19:53

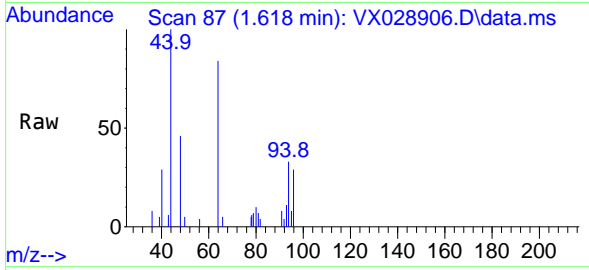
Tgt Ion: 62 Resp: 12734
 Ion Ratio Lower Upper
 62 100
 64 35.7 25.5 38.3



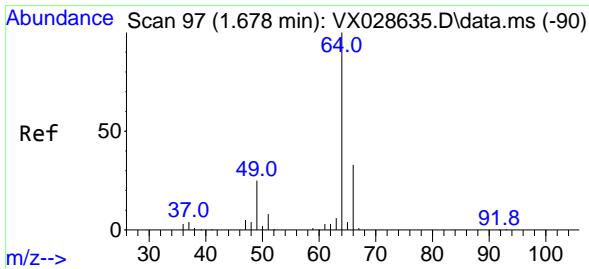
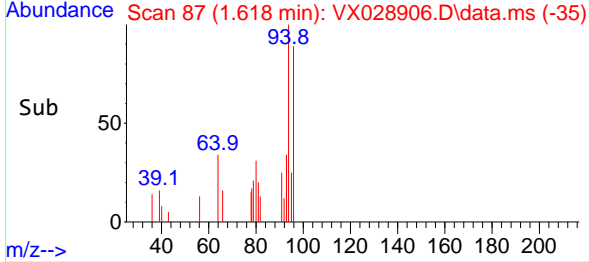
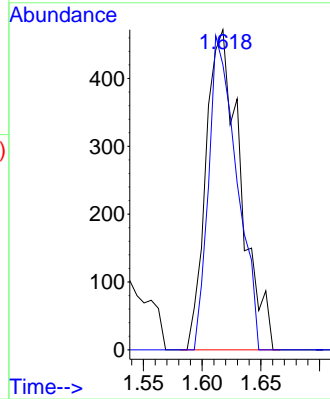


#5
 Bromomethane
 Concen: Below Cal
 RT: 1.618 min Scan# 81
 Delta R.T. 0.019 min
 Lab File: VX028906.D
 Acq: 23 May 2022 19:53

Instrument : MSVOA_X
 ClientSampleId : 16BR-20220520

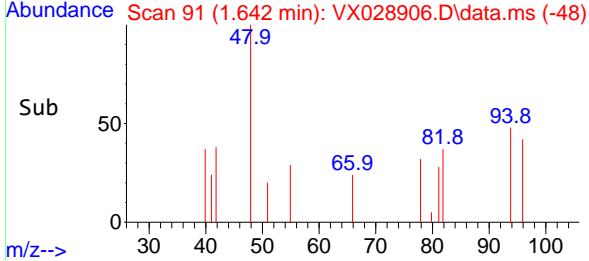
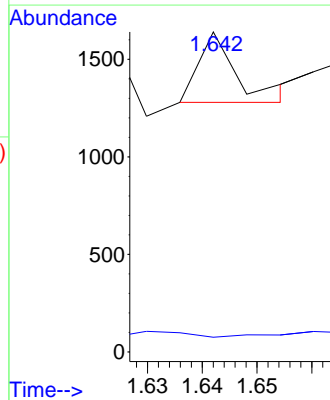
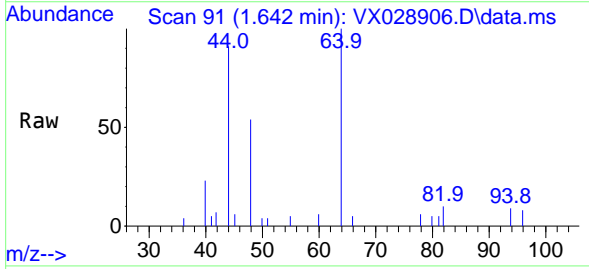


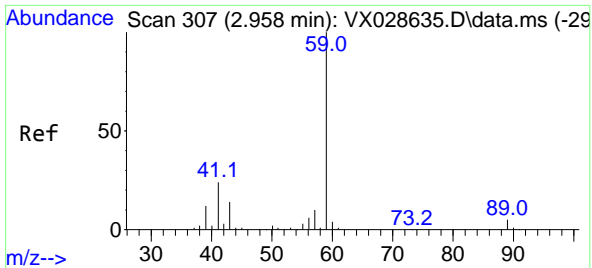
Tgt Ion: 94 Resp: 962
 Ion Ratio Lower Upper
 94 100
 96 89.0 75.3 112.9



#6
 Chloroethane
 Concen: Below Cal
 RT: 1.642 min Scan# 91
 Delta R.T. -0.036 min
 Lab File: VX028906.D
 Acq: 23 May 2022 19:53

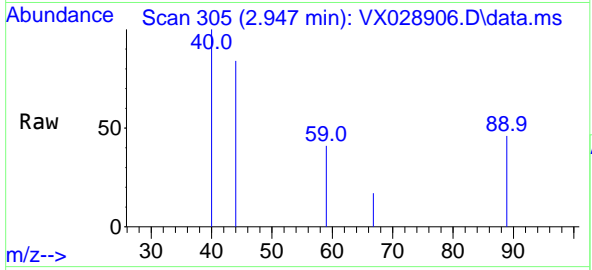
Tgt Ion: 64 Resp: 181
 Ion Ratio Lower Upper
 64 100
 66 0.0 25.3 37.9#



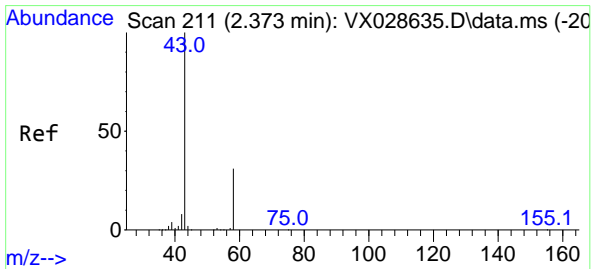
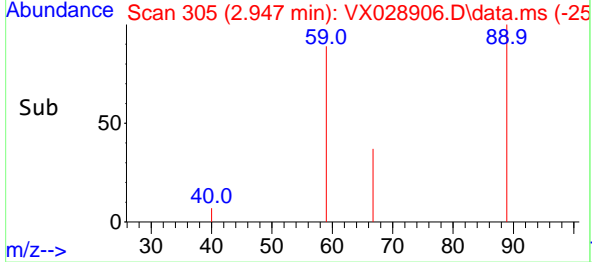
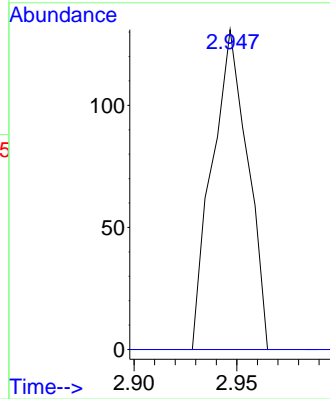


#11
 Tert butyl alcohol
 Concen: Below Cal
 RT: 2.947 min Scan# 307
 Delta R.T. -0.011 min
 Lab File: VX028906.D
 Acq: 23 May 2022 19:53

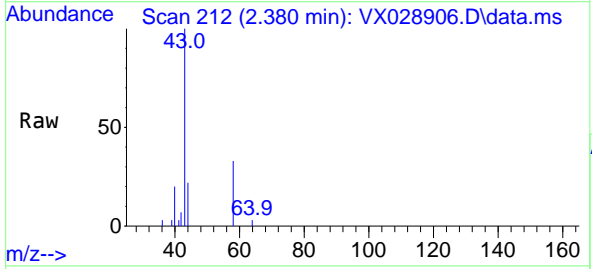
Instrument : MSVOA_X
 ClientSampleId : 16BR-20220520



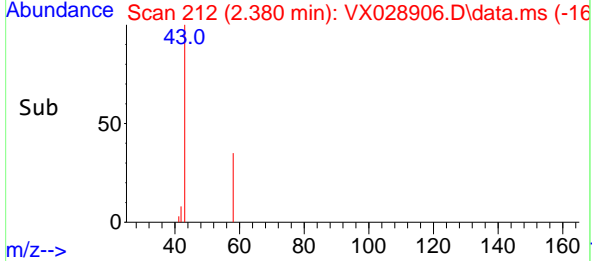
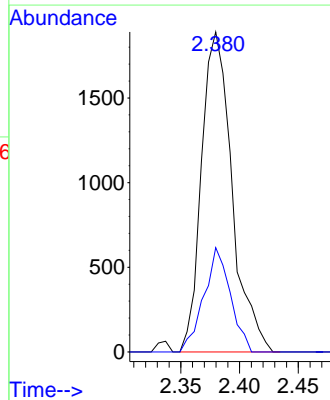
Tgt Ion: 59 Resp: 157
 Ion Ratio Lower Upper
 59 100
 57 0.0 8.3 12.5#

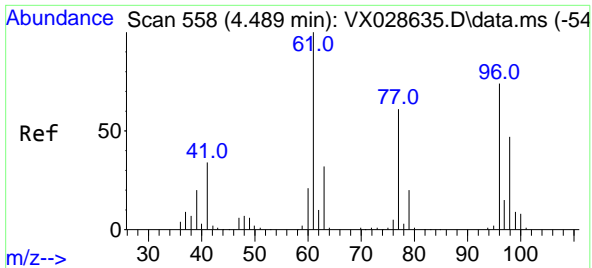


#16
 Acetone
 Concen: 1.745 ug/l
 RT: 2.380 min Scan# 212
 Delta R.T. 0.007 min
 Lab File: VX028906.D
 Acq: 23 May 2022 19:53



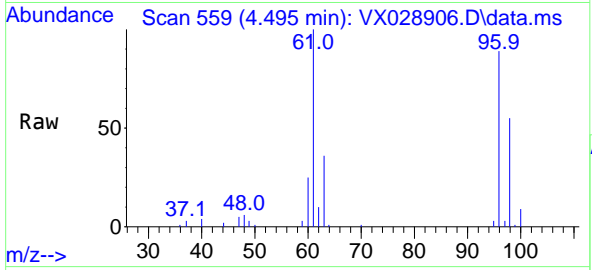
Tgt Ion: 43 Resp: 3413
 Ion Ratio Lower Upper
 43 100
 58 32.6 28.8 43.2



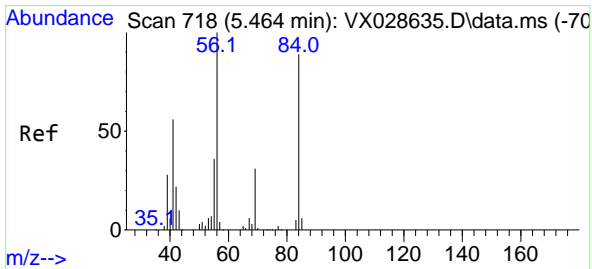
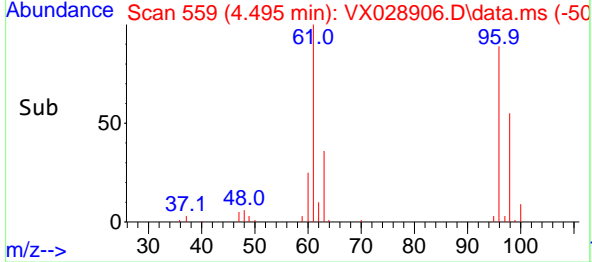
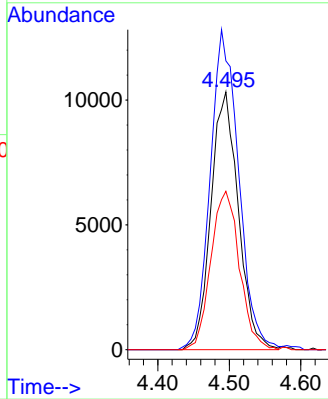


#27
 cis-1,2-Dichloroethene
 Concen: 6.068 ug/l
 RT: 4.495 min Scan# 511
 Delta R.T. 0.006 min
 Lab File: VX028906.D
 Acq: 23 May 2022 19:53

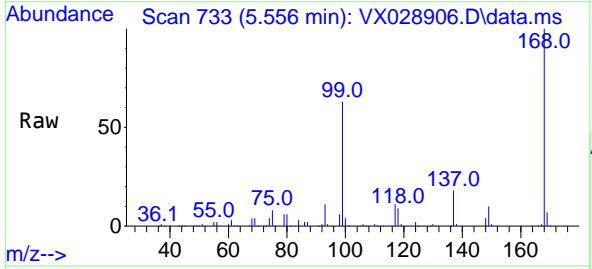
Instrument : MSVOA_X
 ClientSampleId : 16BR-20220520



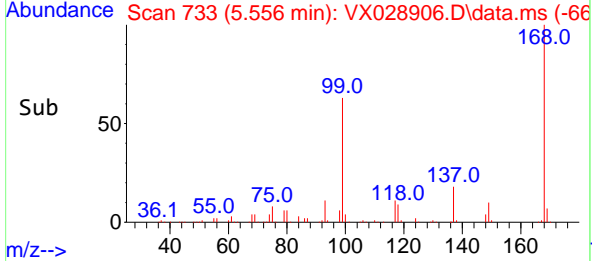
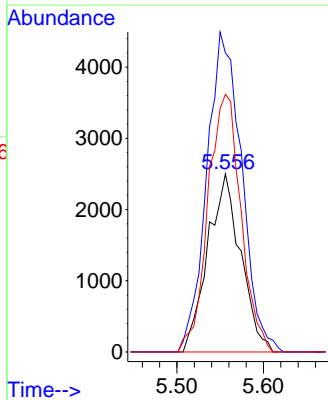
Tgt Ion: 96 Resp: 27465
 Ion Ratio Lower Upper
 96 100
 61 129.1 0.0 283.8
 98 64.2 0.0 129.8

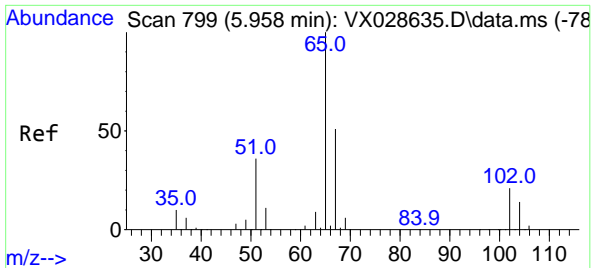


#31
 Cyclohexane
 Concen: 1.043 ug/l
 RT: 5.556 min Scan# 733
 Delta R.T. 0.092 min
 Lab File: VX028906.D
 Acq: 23 May 2022 19:53



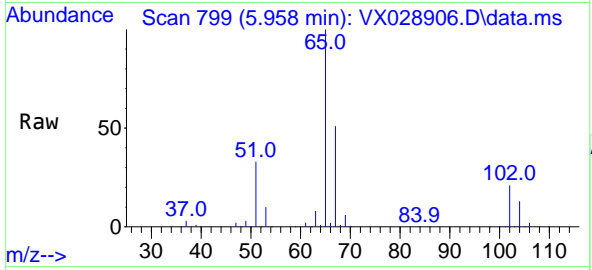
Tgt Ion: 56 Resp: 6600
 Ion Ratio Lower Upper
 56 100
 69 168.0 26.7 40.1#
 84 144.7 77.2 115.8#



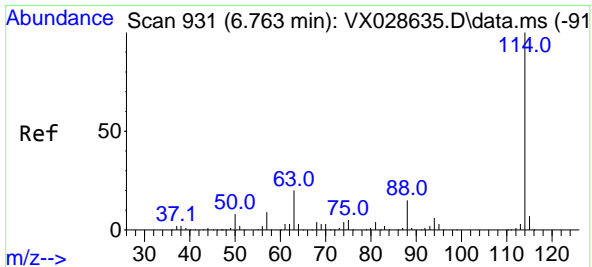
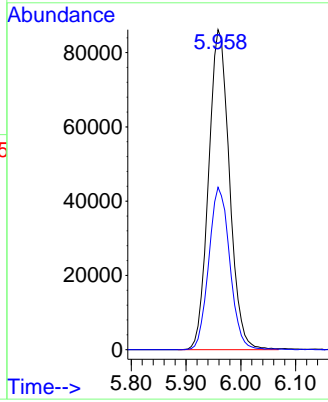
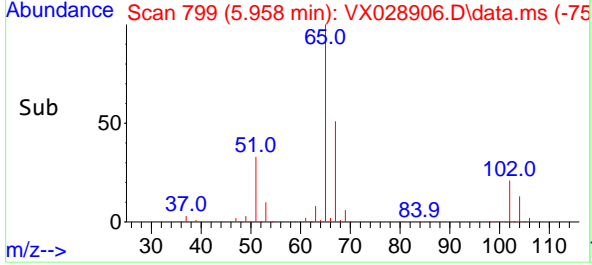


#33
 1,2-Dichloroethane-d4
 Concen: 49.996 ug/l
 RT: 5.958 min Scan# 799
 Delta R.T. 0.000 min
 Lab File: VX028906.D
 Acq: 23 May 2022 19:53

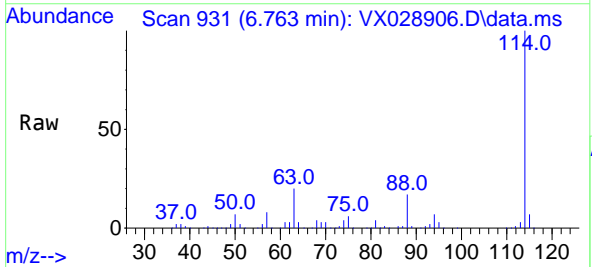
Instrument : MSVOA_X
 ClientSampleId : 16BR-20220520



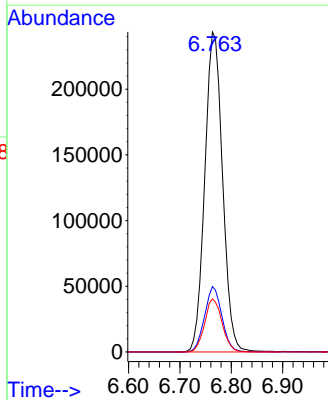
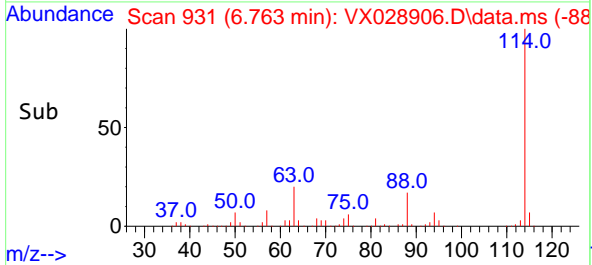
Tgt Ion: 65 Resp: 227843
 Ion Ratio Lower Upper
 65 100
 67 51.1 0.0 107.4

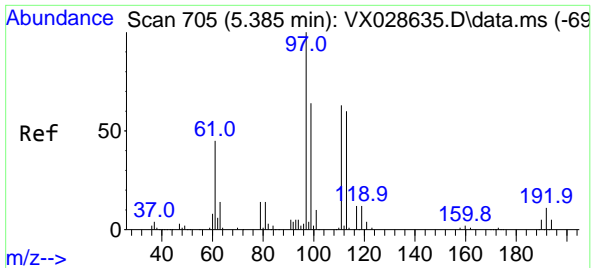


#34
 1,4-Difluorobenzene
 Concen: 50.000 ug/l
 RT: 6.763 min Scan# 931
 Delta R.T. 0.000 min
 Lab File: VX028906.D
 Acq: 23 May 2022 19:53



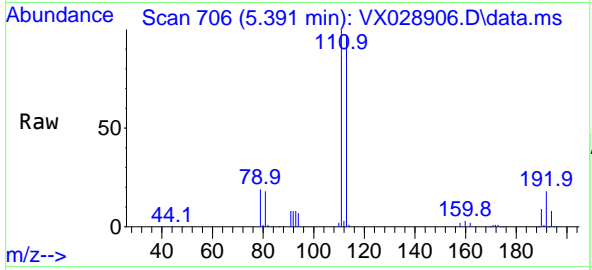
Tgt Ion: 114 Resp: 585528
 Ion Ratio Lower Upper
 114 100
 63 20.4 0.0 36.8
 88 16.6 0.0 32.4



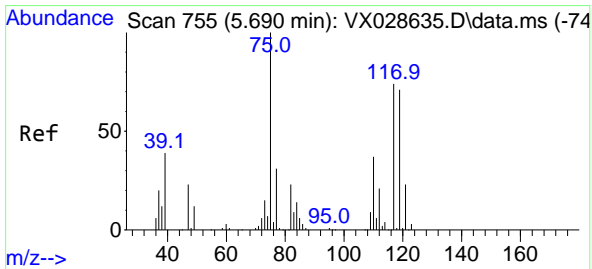
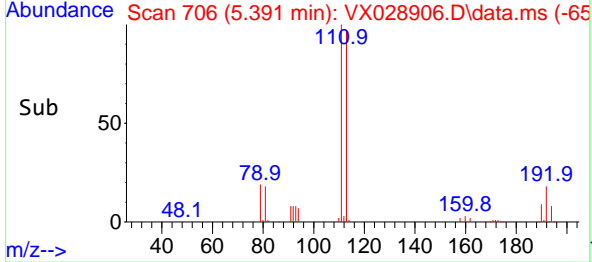
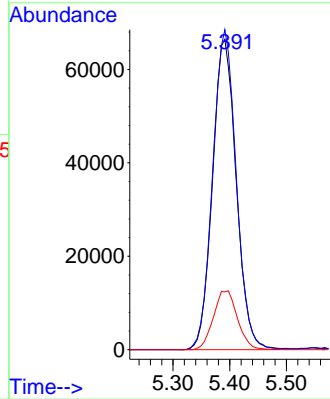


#35
 Dibromofluoromethane
 Concen: 50.342 ug/l
 RT: 5.391 min Scan# 705
 Delta R.T. 0.006 min
 Lab File: VX028906.D
 Acq: 23 May 2022 19:53

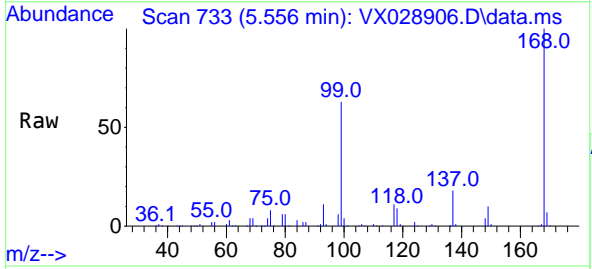
Instrument : MSVOA_X
 ClientSampleId : 16BR-20220520



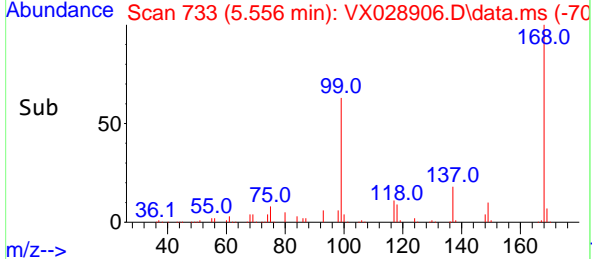
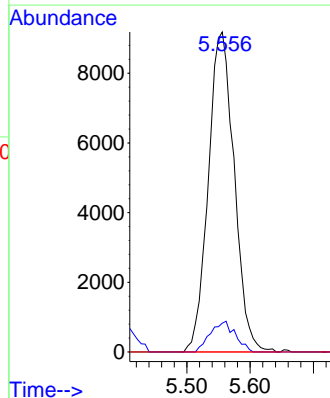
Tgt Ion:113 Resp: 193126
 Ion Ratio Lower Upper
 113 100
 111 102.5 82.8 124.2
 192 19.3 16.9 25.3

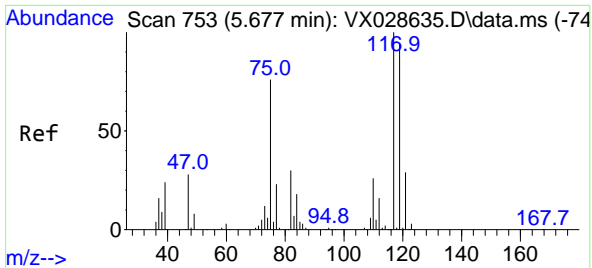


#36
 1,1-Dichloropropene
 Concen: 4.542 ug/l
 RT: 5.556 min Scan# 733
 Delta R.T. -0.134 min
 Lab File: VX028906.D
 Acq: 23 May 2022 19:53



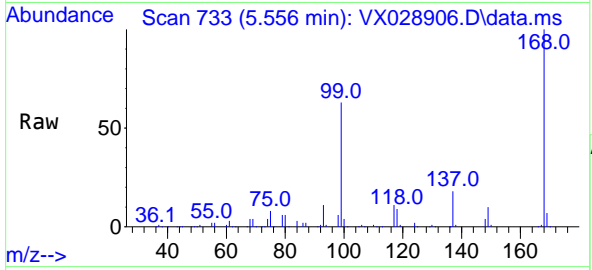
Tgt Ion: 75 Resp: 26169
 Ion Ratio Lower Upper
 75 100
 110 9.2 18.3 54.8#
 77 0.0 24.8 37.2#



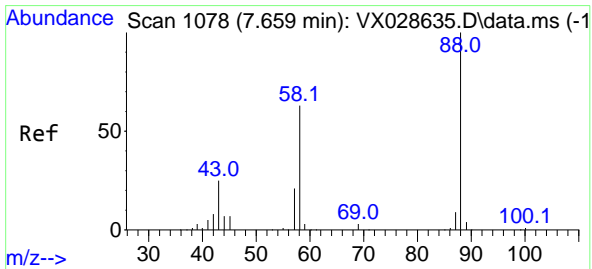
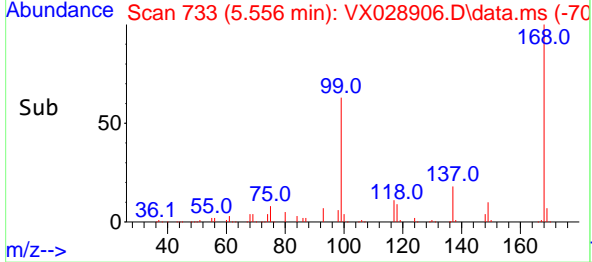
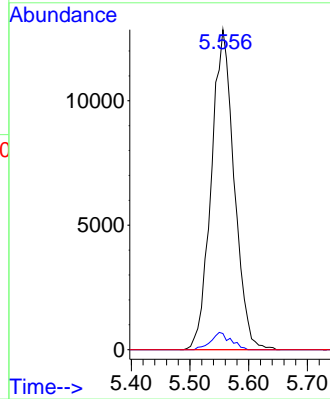


#38
 Carbon Tetrachloride
 Concen: 6.016 ug/l
 RT: 5.556 min Scan# 711
 Delta R.T. -0.121 min
 Lab File: VX028906.D
 Acq: 23 May 2022 19:53

Instrument : MSVOA_X
 ClientSampleId : 16BR-20220520

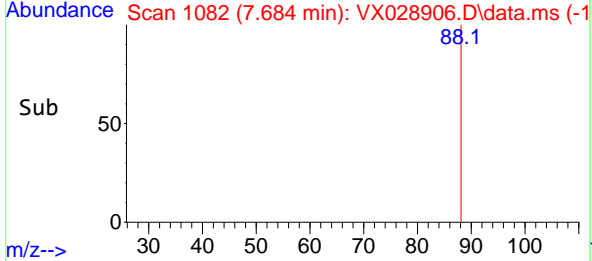
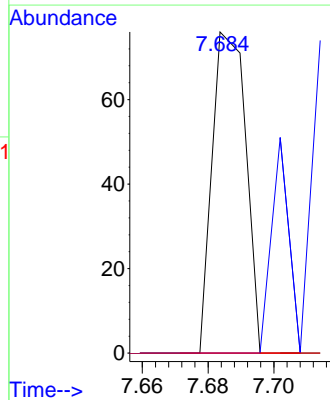
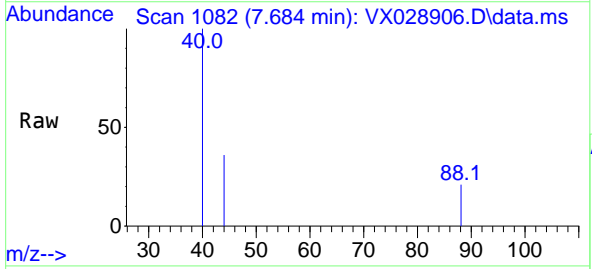


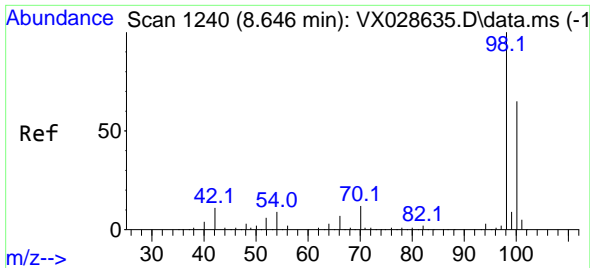
Tgt Ion:117 Resp: 34888
 Ion Ratio Lower Upper
 117 100
 119 5.0 77.3 115.9#
 121 0.0 24.2 36.2#



#49
 1,4-Dioxane
 Concen: 0.475 ug/l
 RT: 7.684 min Scan# 1082
 Delta R.T. 0.025 min
 Lab File: VX028906.D
 Acq: 23 May 2022 19:53

Tgt Ion: 88 Resp: 54
 Ion Ratio Lower Upper
 88 100
 43 35.2 21.9 32.9#
 58 0.0 53.7 80.5#

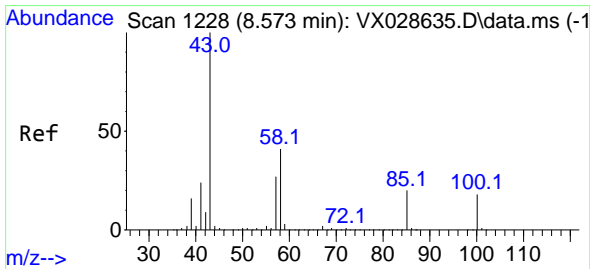
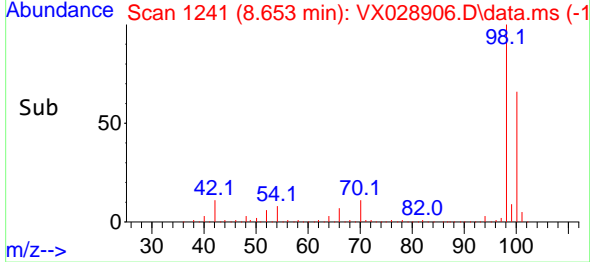
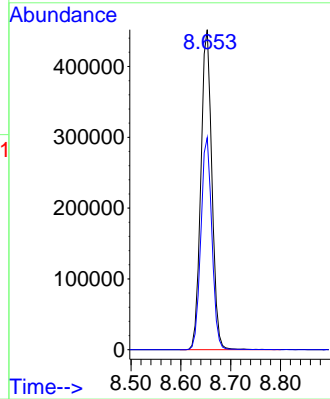
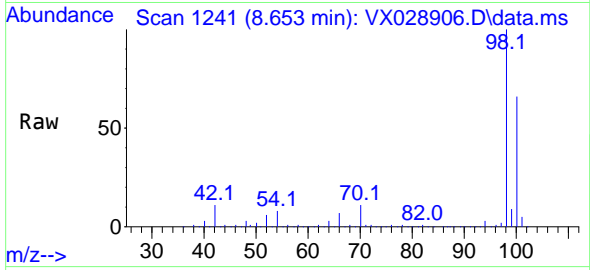




#50
 Toluene-d8
 Concen: 47.891 ug/l
 RT: 8.653 min Scan# 11
 Delta R.T. 0.007 min
 Lab File: VX028906.D
 Acq: 23 May 2022 19:53

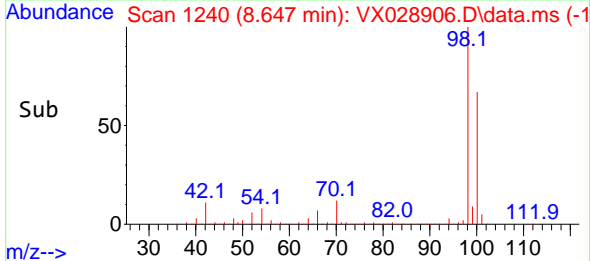
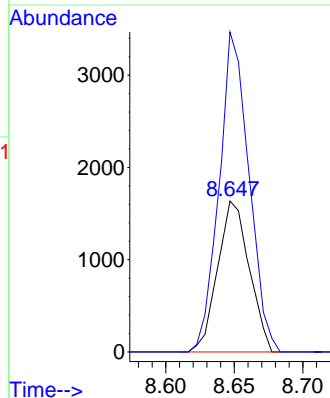
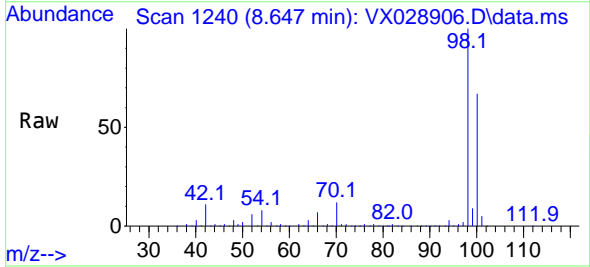
Instrument :
 MSVOA_X
 ClientSampleId :
 16BR-20220520

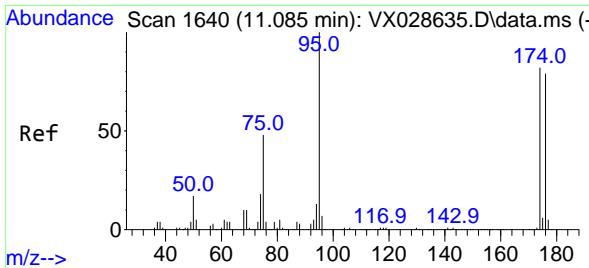
Tgt Ion: 98 Resp: 692677
 Ion Ratio Lower Upper
 98 100
 100 66.3 52.6 78.8



#51
 4-Methyl-2-Pentanone
 Concen: 0.423 ug/l
 RT: 8.647 min Scan# 1240
 Delta R.T. 0.074 min
 Lab File: VX028906.D
 Acq: 23 May 2022 19:53

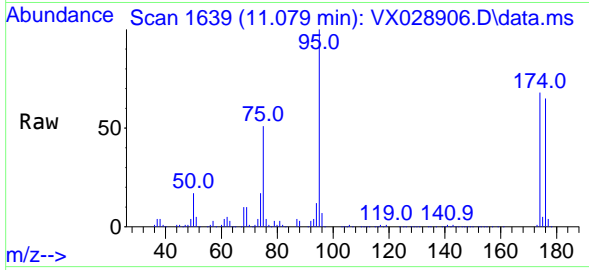
Tgt Ion: 43 Resp: 2622
 Ion Ratio Lower Upper
 43 100
 58 200.7 36.1 54.1#



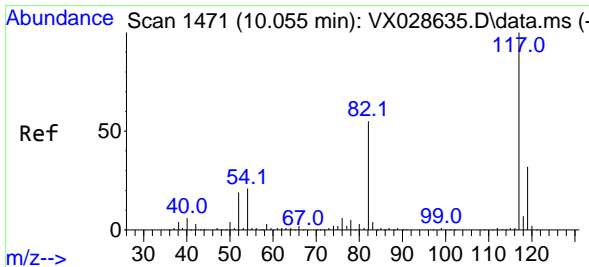
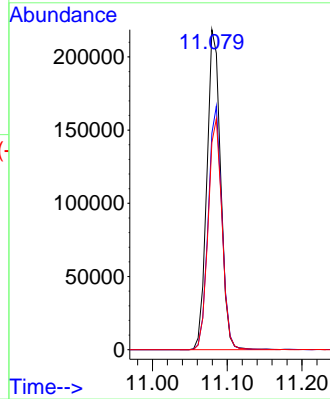
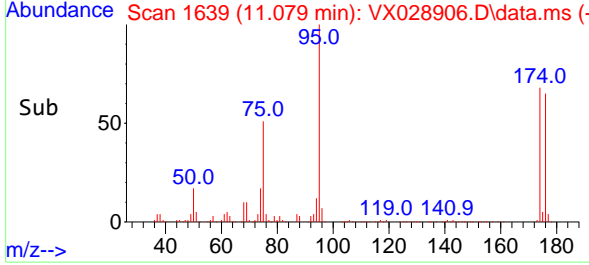


#62
 4-Bromofluorobenzene
 Concen: 51.640 ug/l
 RT: 11.079 min Scan# 1639
 Delta R.T. -0.006 min
 Lab File: VX028906.D
 Acq: 23 May 2022 19:53

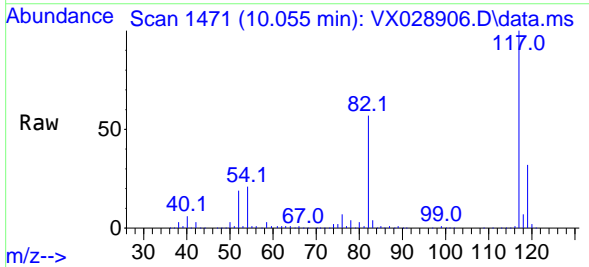
Instrument : MSVOA_X
 ClientSampleId : 16BR-20220520



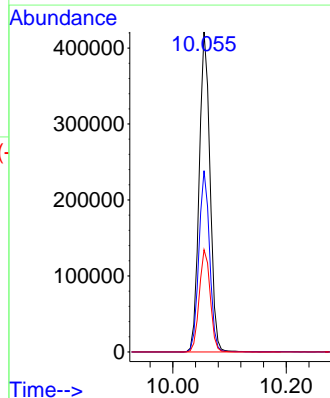
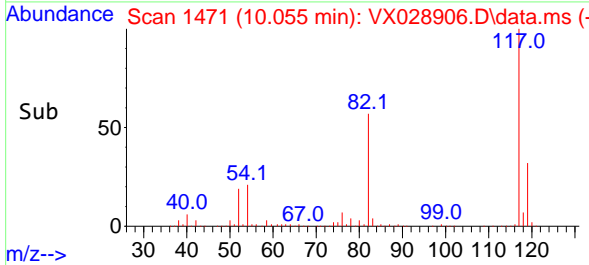
Tgt Ion: 95 Resp: 278974
 Ion Ratio Lower Upper
 95 100
 174 75.5 0.0 163.0
 176 72.7 0.0 155.0

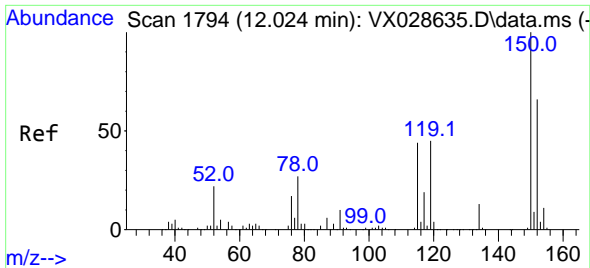


#63
 Chlorobenzene-d5
 Concen: 50.000 ug/l
 RT: 10.055 min Scan# 1471
 Delta R.T. 0.000 min
 Lab File: VX028906.D
 Acq: 23 May 2022 19:53



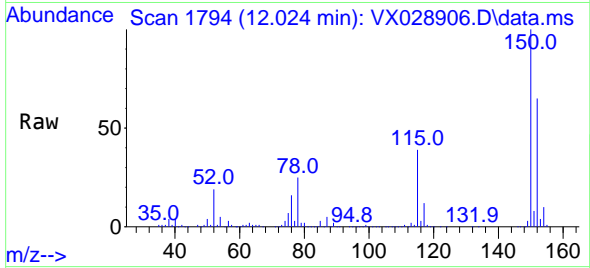
Tgt Ion: 117 Resp: 557627
 Ion Ratio Lower Upper
 117 100
 82 56.6 41.8 62.8
 119 31.9 24.8 37.2



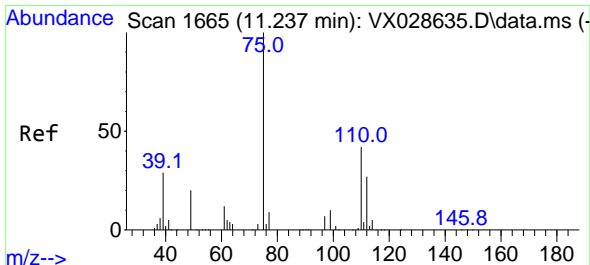
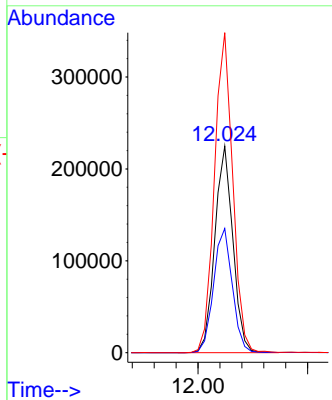
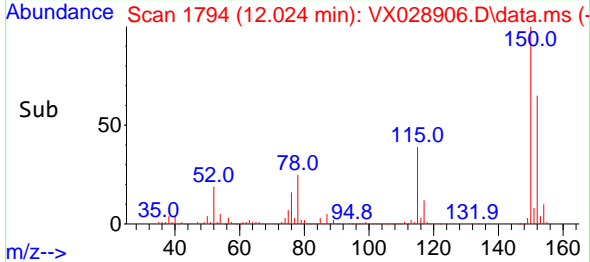


#72
 1,4-Dichlorobenzene-d4
 Concen: 50.000 ug/l
 RT: 12.024 min Scan# 11
 Delta R.T. 0.000 min
 Lab File: VX028906.D
 Acq: 23 May 2022 19:53

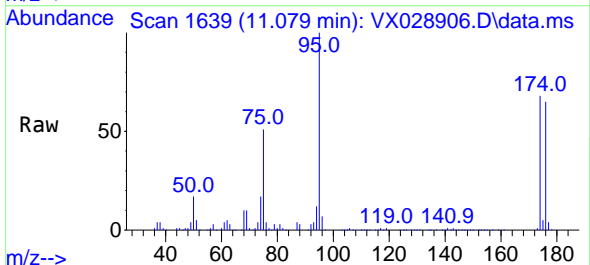
Instrument :
 MSVOA_X
 ClientSampleId :
 16BR-20220520



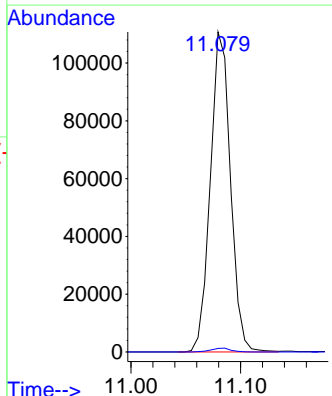
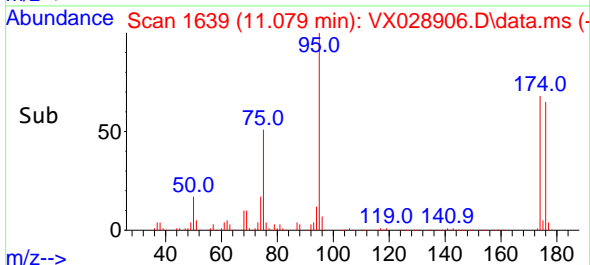
Tgt Ion:152 Resp: 257983
 Ion Ratio Lower Upper
 152 100
 115 62.3 37.5 112.7
 150 156.8 0.0 338.2

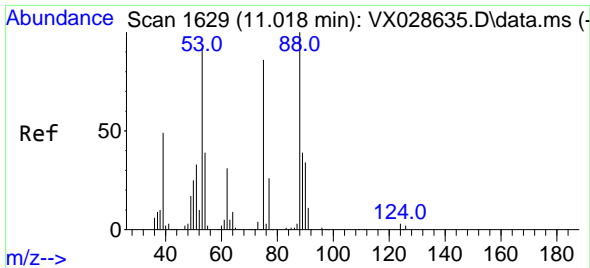


#76
 1,2,3-Trichloropropane
 Concen: 23.367 ug/l
 RT: 11.079 min Scan# 1639
 Delta R.T. -0.158 min
 Lab File: VX028906.D
 Acq: 23 May 2022 19:53



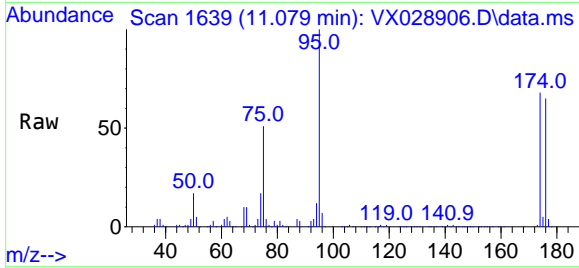
Tgt Ion: 75 Resp: 141175
 Ion Ratio Lower Upper
 75 100
 77 1.2 19.4 58.2#





#81
 trans-1,4-Dichloro-2-butene
 Concen: 68.183 ug/l
 RT: 11.079 min Scan# 10
 Delta R.T. 0.061 min
 Lab File: VX028906.D
 Acq: 23 May 2022 19:53

Instrument : MSVOA_X
 ClientSampleId : 16BR-20220520



Tgt Ion: 75 Resp: 141175

Ion	Ratio	Lower	Upper
75	100		
53	0.0	69.0	103.4#
89	0.0	37.0	55.6#

