

Data Path : Z:\VOASRV\HPCHEM1\MSVOA X\DATA\VX052419\
 Data File : VX009887.D
 Acq On : 24 May 2019 15:24
 Operator : JC/SP
 Sample : K3000-01
 Misc : 5.0mL/MSVOA X/WATER
 ALS Vial : 14 Sample Multiplier: 1

Instrument :
 MSVOA_X
Client Sampled :
 S36-0154

Manual Integrations
APPROVED
 MMDadoda
 5/28/2019 9:52:13 AM

Quant Time: May 25 01:21:33 2019
 Quant Method : Z:\VOASRV\HPCHEM1\MSVOA_X\METHOD\82X042919W.M
 Quant Title : SW846 8260
 QLast Update : Thu May 09 07:31:15 2019
 Response via : Initial Calibration

Internal Standards	R.T.	QIon	Response	Conc	Units	Dev(Min)
1) Pentafluorobenzene	5.67	168	181637	50.00	ug/l	0.00
34) 1,4-Difluorobenzene	6.86	114	290944	50.00	ug/l	0.00
63) Chlorobenzene-d5	10.12	117	264295	50.00	ug/l	0.00
72) 1,4-Dichlorobenzene-d4	12.08	152	118566	50.00	ug/l	0.00

System Monitoring Compounds

33) 1,2-Dichloroethane-d4	6.06	65	124202	50.09	ug/l	0.00
Spiked Amount	50.000		Recovery	= 100.18%		
35) Dibromofluoromethane	5.50	113	88636	48.46	ug/l	0.00
Spiked Amount	50.000		Recovery	= 96.92%		
50) Toluene-d8	8.71	98	371902	50.37	ug/l	0.00
Spiked Amount	50.000		Recovery	= 100.74%		
62) 4-Bromofluorobenzene	11.13	95	131571	49.04	ug/l	0.00
Spiked Amount	50.000		Recovery	= 98.08%		

Target Compounds

						Qvalue
16) Acetone	2.44	43	4059	3.049	ug/l	97
17) Carbon Disulfide	2.57	76	1887	0.394	ug/l #	84
21) trans-1,2-Dichloroethene	3.17	96	8929	4.831	ug/l	90
27) cis-1,2-Dichloroethene	4.60	96	3113	1.411	ug/l	98
29) Tetrahydrofuran	5.13	42	14092	10.584	ug/l	95
31) Cyclohexane	5.58	56	29487	8.044	ug/l	95
39) Methylcyclohexane	7.46	83	11106	3.345	ug/l	95
40) Benzene	6.14	78	960980	114.843	ug/l	99
44) Trichloroethene	7.21	130	1068	0.528	ug/l	86
65) Chlorobenzene	10.14	112	6208882	1174.348	ug/l	96
67) Ethyl Benzene	10.25	91	422602	43.432	ug/l	99
68) m/p-Xylenes	10.35	106	10080	2.835	ug/l	97
69) o-Xylene	10.70	106	5937	1.692	ug/l	91
73) Isopropylbenzene	11.02	105	56685	6.574	ug/l	100
78) n-propylbenzene	11.36	91	60323	6.126	ug/l	100
79) 2-Chlorotoluene	11.42	91	5678	0.935	ug/l	94
80) 1,3,5-Trimethylbenzene	11.51	105	4533	0.624	ug/l	94
83) tert-Butylbenzene	11.77	119	4286	0.607	ug/l	86
84) 1,2,4-Trimethylbenzene	11.80	105	14048	1.928	ug/l	95
85) sec-Butylbenzene	11.94	105	14992	1.791	ug/l	84
87) 1,3-Dichlorobenzene	12.02	146	21713	5.692	ug/l	100
88) 1,4-Dichlorobenzene	12.10	146	107561	27.966	ug/l	99
91) 1,2-Dichlorobenzene	12.39	146	3485	0.897	ug/l	96
95) Naphthalene	13.83	128	86227	9.974	ug/l	99

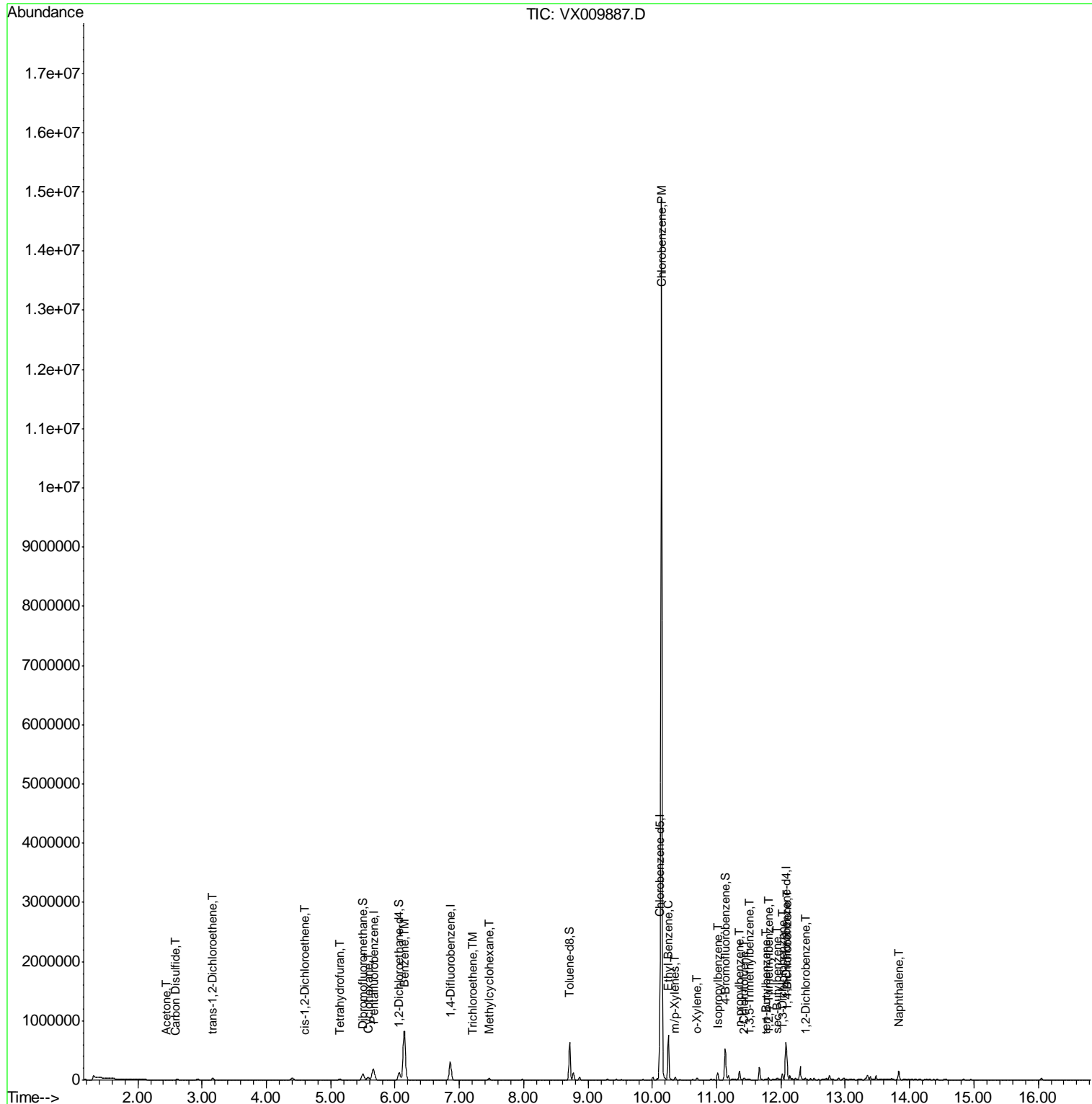
(#) = qualifier out of range (m) = manual integration (+) = signals summed

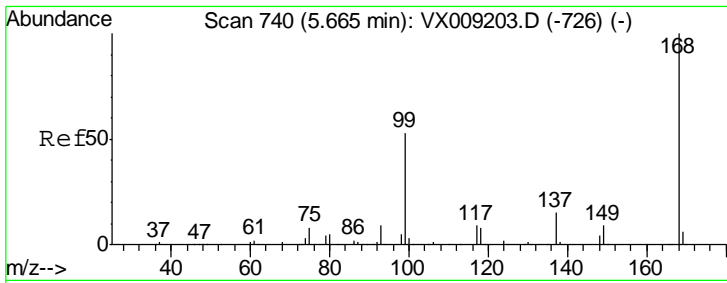
Data Path : Z:\VOASRV\HPCHEM1\MSVOA X\DATA\VX052419\
 Data File : VX009887.D
 Acq On : 24 May 2019 15:24
 Operator : JC/SP
 Sample : K3000-01
 Misc : 5.0mL/MSVOA X/WATER
 ALS Vial : 14 Sample Multiplier: 1

Instrument :
 MSVOA_X
Client Sampled :
 S36-0154

Manual Integrations
APPROVED
 MMDadoda
 5/28/2019 9:52:13 AM

Quant Time: May 25 01:21:33 2019
 Quant Method : Z:\VOASRV\HPCHEM1\MSVOA_X\METHOD\82X042919W.M
 Quant Title : SW846 8260
 QLast Update : Thu May 09 07:31:15 2019
 Response via : Initial Calibration





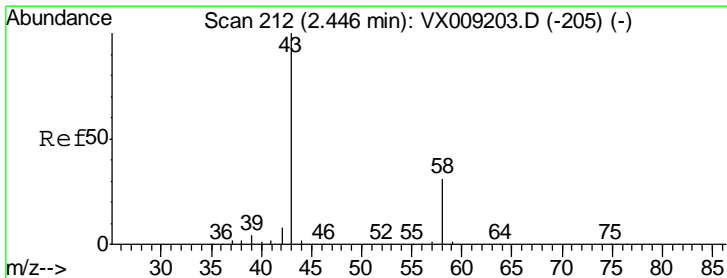
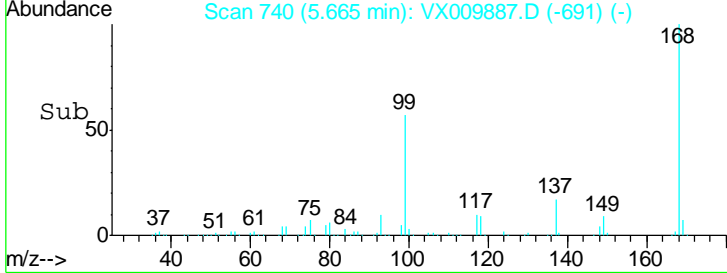
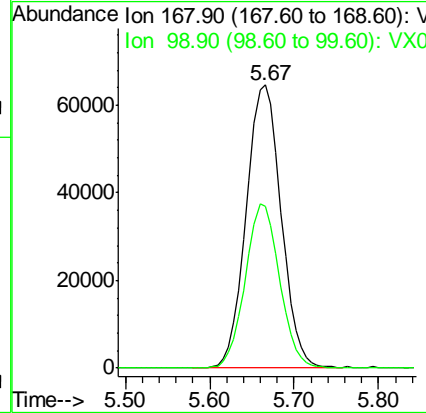
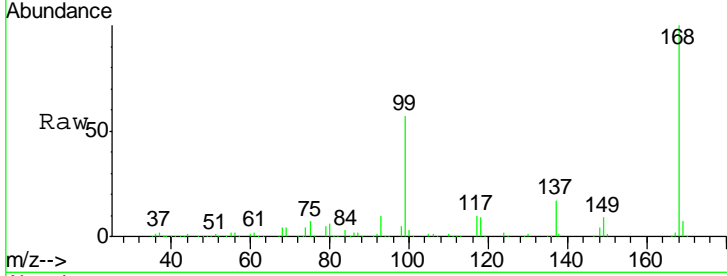
#1
 Pentafluorobenzene
 Concen: 50.000 ug/l
 RT: 5.67 min Scan# 740
 Delta R.T. 0.00 min
 Lab File: VX009887.D
 Acq: 24 May 2019 15:24

Instrument : MSVOA_X
 ClientSampled : S36-0154

Tgt Ion	Resp	Lower	Upper
168	100		
99	57.3	42.3	63.5

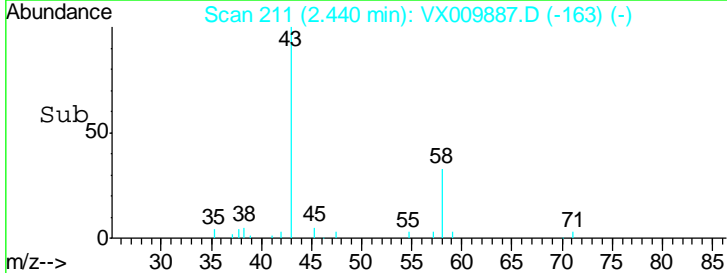
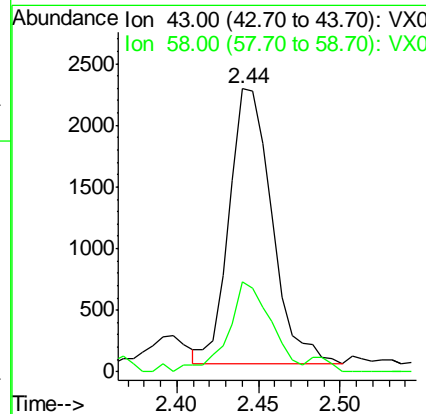
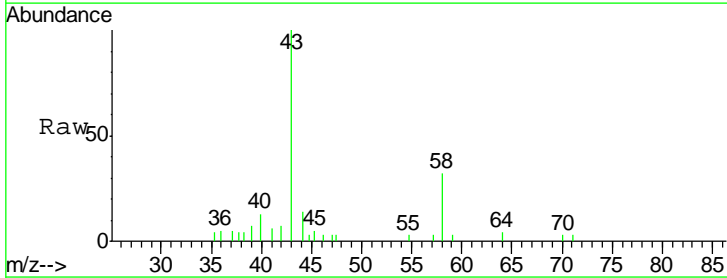
Manual Integrations
 APPROVED

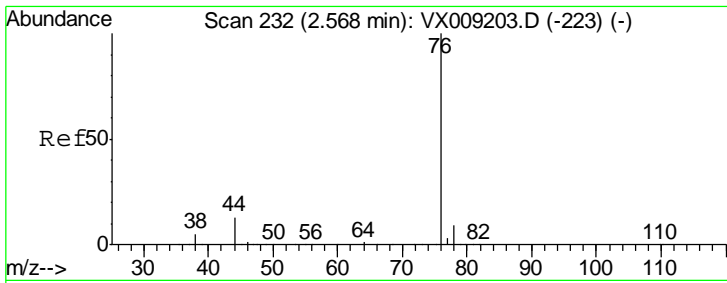
MMDadoda
 5/28/2019 9:52:13 AM



#16
 Acetone
 Concen: 3.049 ug/l
 RT: 2.44 min Scan# 211
 Delta R.T. -0.01 min
 Lab File: VX009887.D
 Acq: 24 May 2019 15:24

Tgt Ion	Resp	Lower	Upper
43	100		
58	32.6	24.9	37.3





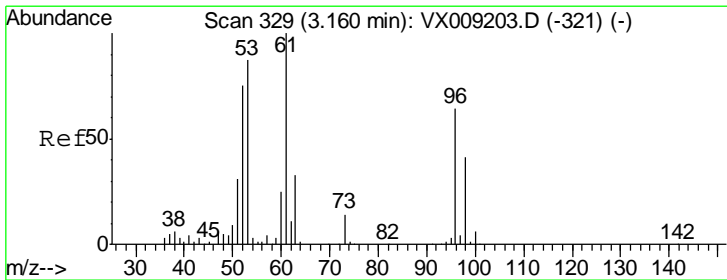
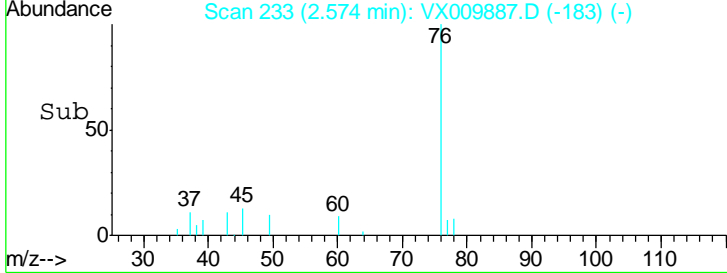
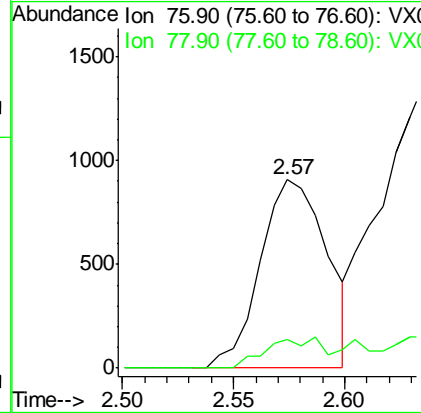
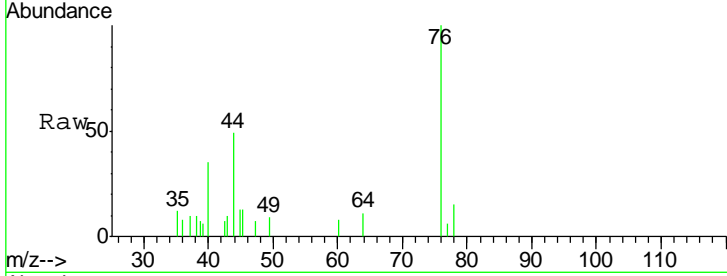
#17
 Carbon Disulfide
 Concen: 0.394 ug/l
 RT: 2.57 min Scan# 233
 Delta R.T. 0.01 min
 Lab File: VX009887.D
 Acq: 24 May 2019 15:24

Instrument :
 MSVOA_X
Client Sampled :
 S36-0154

Tgt Ion: 76 Resp: 1887

Ion	Ratio	Lower	Upper
76	100		
78	14.9	7.4	11.0#

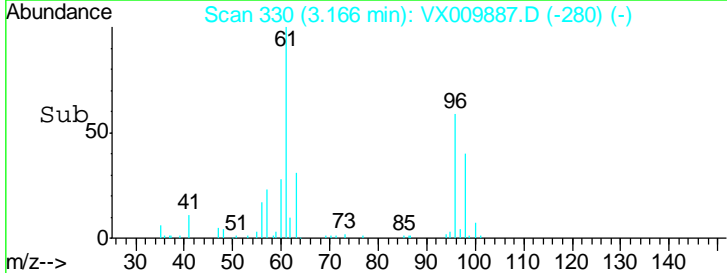
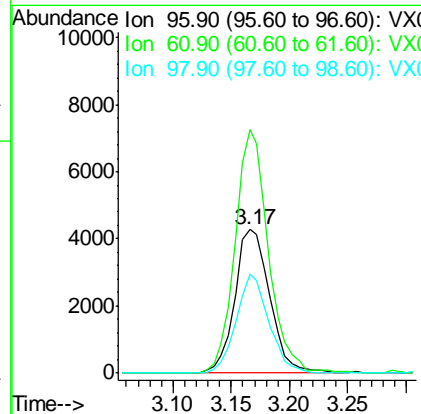
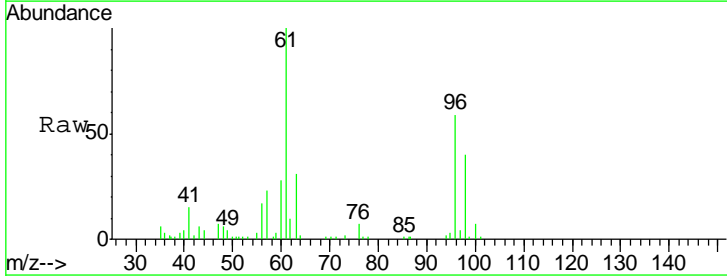
Manual Integrations
APPROVED
 MMDadoda
 5/28/2019 9:52:13 AM

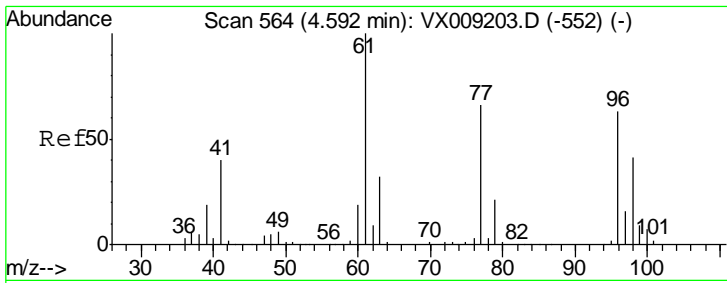


#21
 trans-1,2-Dichloroethene
 Concen: 4.831 ug/l
 RT: 3.17 min Scan# 330
 Delta R.T. 0.01 min
 Lab File: VX009887.D
 Acq: 24 May 2019 15:24

Tgt Ion: 96 Resp: 8929

Ion	Ratio	Lower	Upper
96	100		
61	169.6	124.5	186.7
98	68.6	50.4	75.6





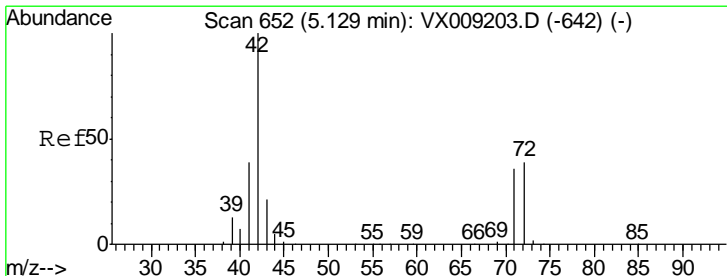
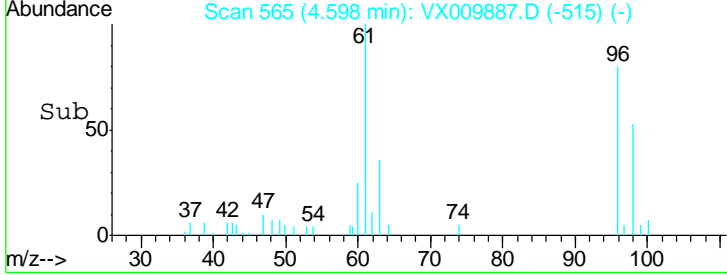
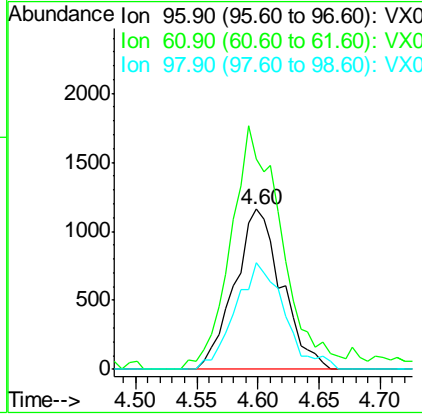
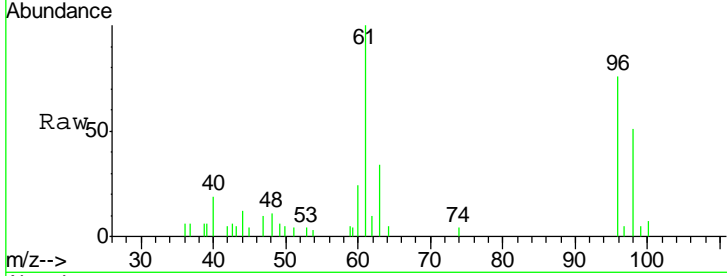
#27
 cis-1,2-Dichloroethene
 Concen: 1.411 ug/l
 RT: 4.60 min Scan# 565
 Delta R.T. 0.01 min
 Lab File: VX009887.D
 Acq: 24 May 2019 15:24

Instrument : MSVOA_X
 Client Sampled : S36-0154

Tgt Ion	Resp	Lower	Upper
96	3113		
96	100		
61	163.3	0.0	324.0
98	69.4	0.0	130.4

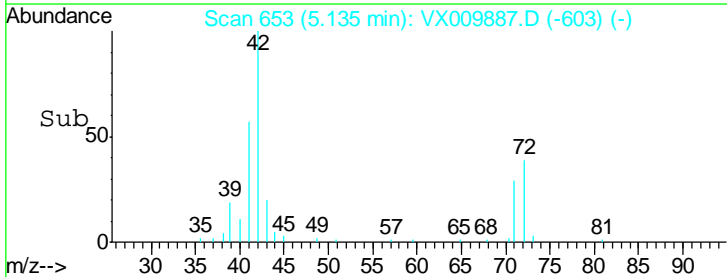
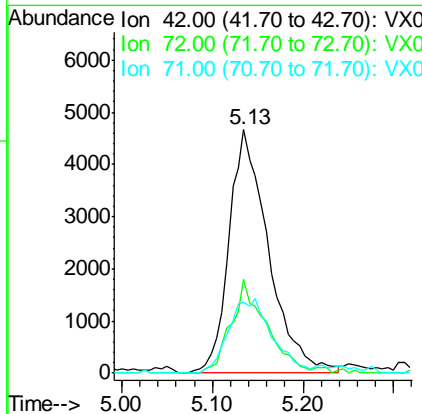
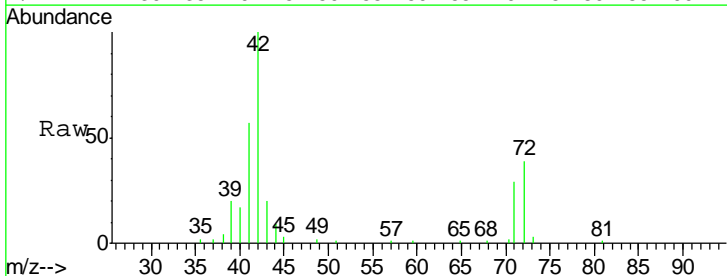
Manual Integrations
 APPROVED

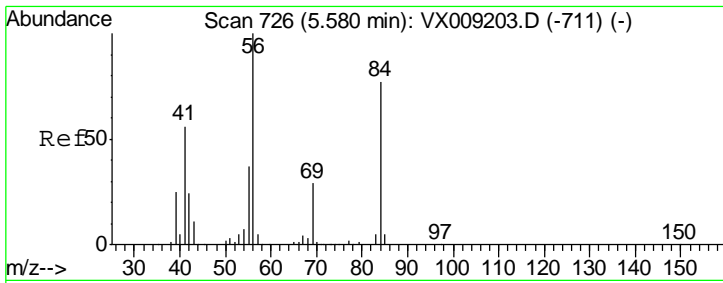
MMDadoda
 5/28/2019 9:52:13 AM



#29
 Tetrahydrofuran
 Concen: 10.584 ug/l
 RT: 5.13 min Scan# 653
 Delta R.T. 0.01 min
 Lab File: VX009887.D
 Acq: 24 May 2019 15:24

Tgt Ion	Resp	Lower	Upper
42	14092		
42	100		
72	33.9	30.4	45.6
71	33.6	28.6	43.0





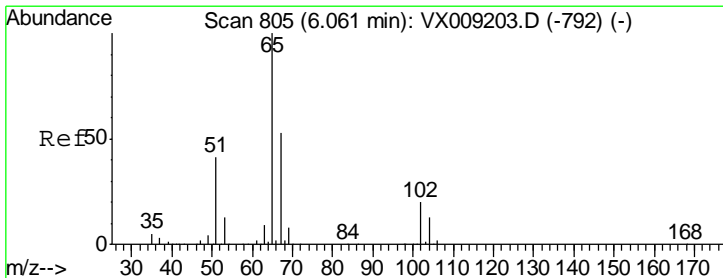
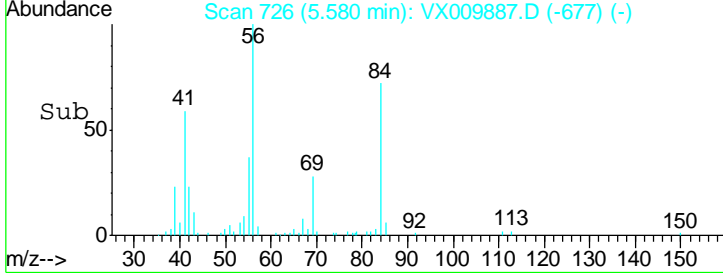
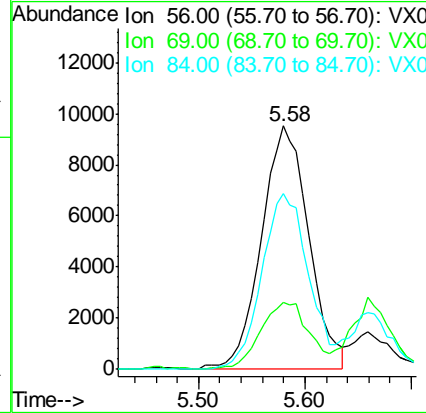
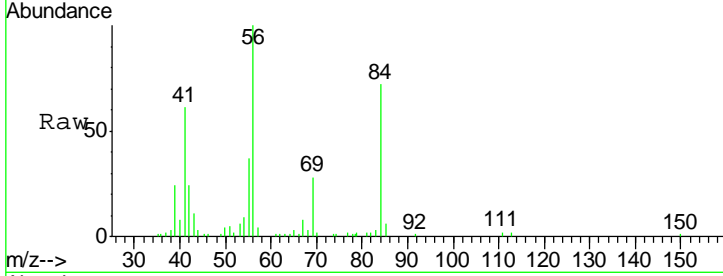
#31
 Cyclohexane
 Concen: 8.044 ug/l
 RT: 5.58 min Scan# 726
 Delta R.T. 0.00 min
 Lab File: VX009887.D
 Acq: 24 May 2019 15:24

Instrument :
 MSVOA_X
ClientSampled :
 S36-0154

Tgt Ion	Resp	Lower	Upper
56	100		
69	27.7	23.4	35.0
84	72.4	61.9	92.9

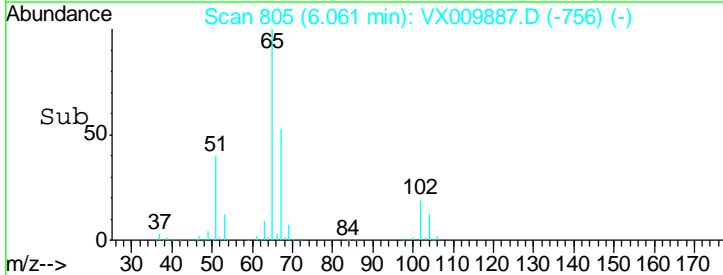
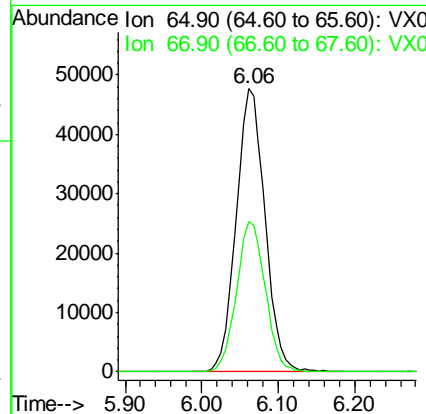
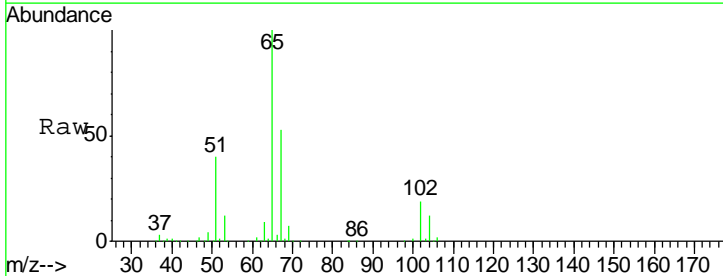
Manual Integrations
APPROVED

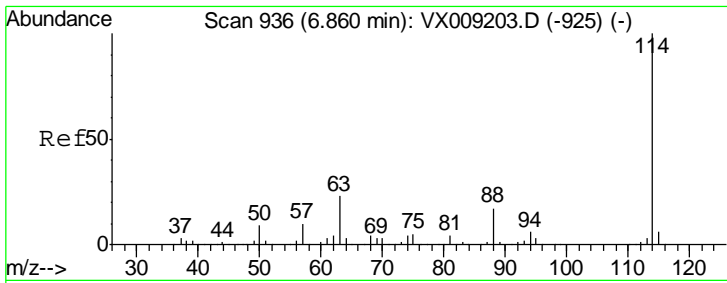
MMDadoda
 5/28/2019 9:52:13 AM



#33
 1,2-Dichloroethane-d4
 Concen: 50.090 ug/l
 RT: 6.06 min Scan# 805
 Delta R.T. 0.00 min
 Lab File: VX009887.D
 Acq: 24 May 2019 15:24

Tgt Ion	Resp	Lower	Upper
65	100		
67	53.2	0.0	106.6





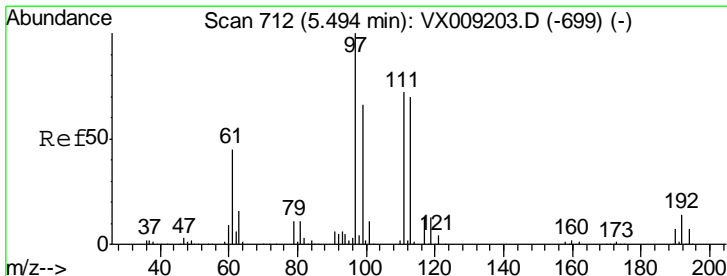
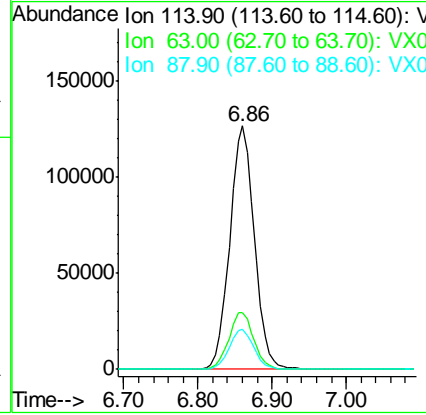
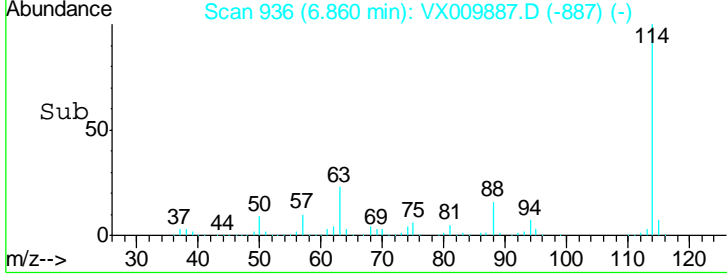
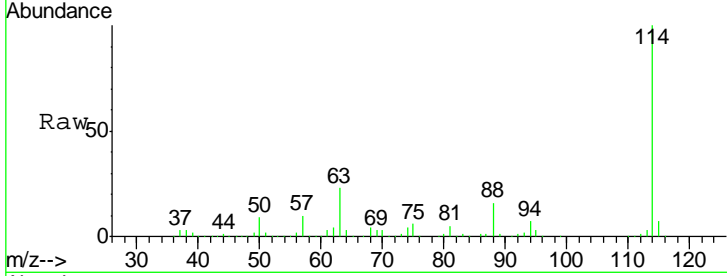
#34
 1,4-Difluorobenzene
 Concen: 50.000 ug/l
 RT: 6.86 min Scan# 936
 Delta R.T. 0.00 min
 Lab File: VX009887.D
 Acq: 24 May 2019 15:24

Instrument :
 MSVOA_X
ClientSampled :
 S36-0154

Tgt Ion	Resp	Lower	Upper
114	100		
63	23.4	0.0	45.6
88	16.5	0.0	33.2

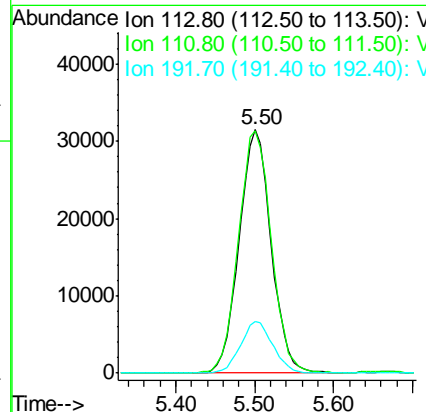
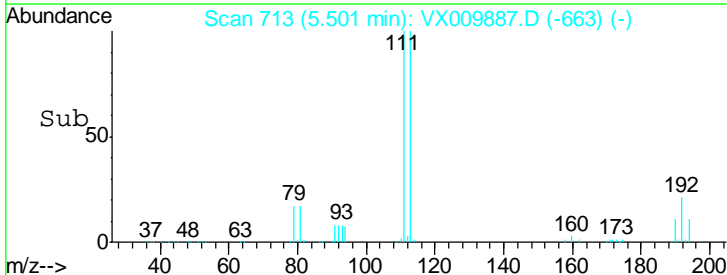
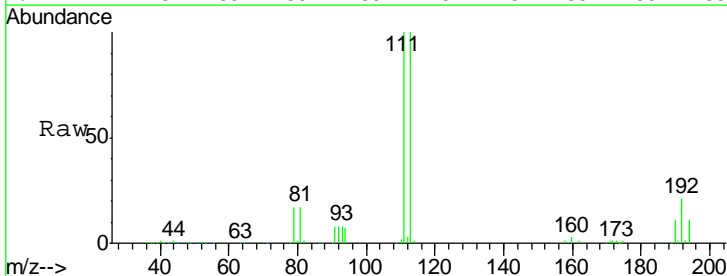
Manual Integrations
APPROVED

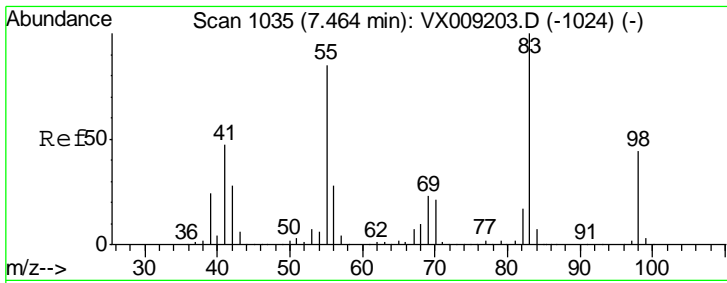
MMDadoda
 5/28/2019 9:52:13 AM



#35
 Dibromofluoromethane
 Concen: 48.462 ug/l
 RT: 5.50 min Scan# 713
 Delta R.T. 0.01 min
 Lab File: VX009887.D
 Acq: 24 May 2019 15:24

Tgt Ion	Resp	Lower	Upper
113	100		
111	102.8	82.8	124.2
192	21.5	17.0	25.6



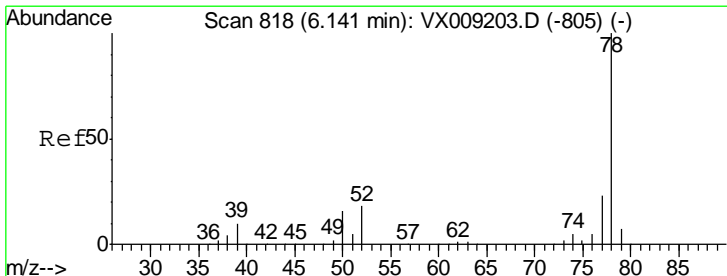
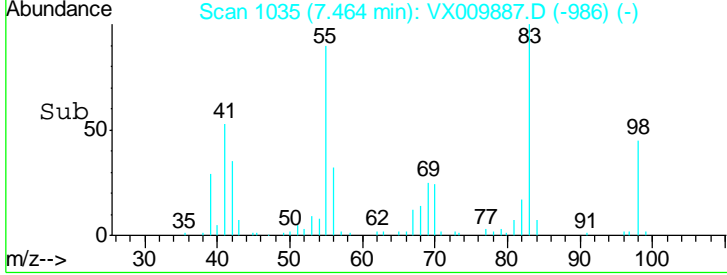
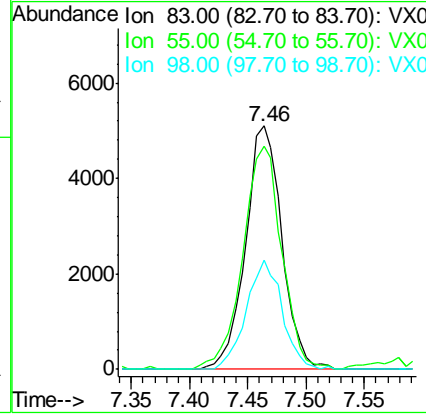
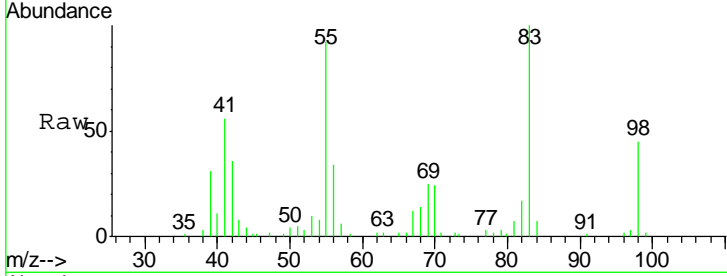


#39
 Methylcyclohexane
 Concen: 3.345 ug/l
 RT: 7.46 min Scan# 1035
 Delta R.T. 0.00 min
 Lab File: VX009887.D
 Acq: 24 May 2019 15:24

Instrument : MSVOA_X
 Client Sampled : S36-0154

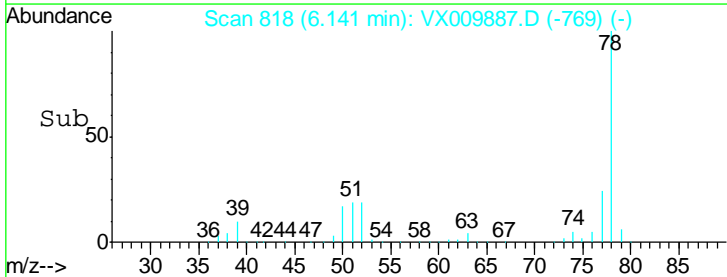
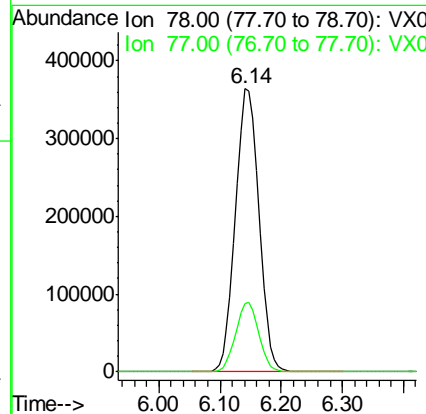
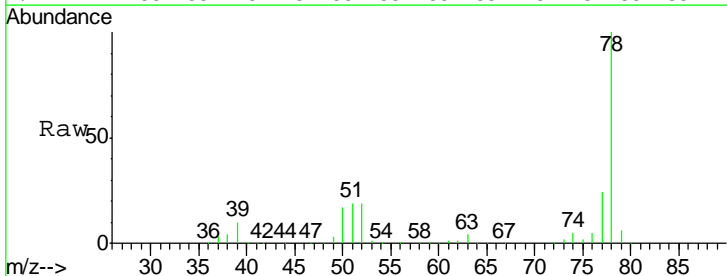
Tgt Ion	Resp	Lower	Upper
83	11106		
83	100		
55	91.9	67.7	101.5
98	44.7	35.5	53.3

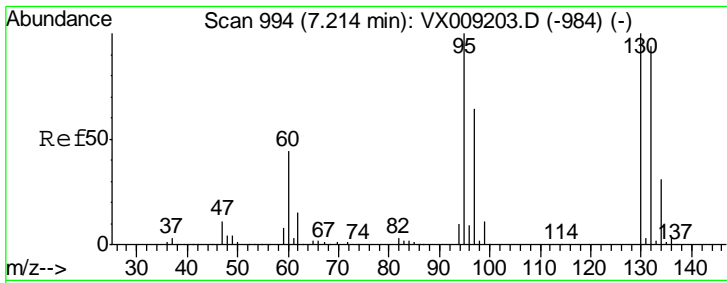
Manual Integrations
APPROVED
 MMDadoda
 5/28/2019 9:52:13 AM



#40
 Benzene
 Concen: 114.843 ug/l
 RT: 6.14 min Scan# 818
 Delta R.T. 0.00 min
 Lab File: VX009887.D
 Acq: 24 May 2019 15:24

Tgt Ion	Resp	Lower	Upper
78	960980		
78	100		
77	24.0	18.8	28.2



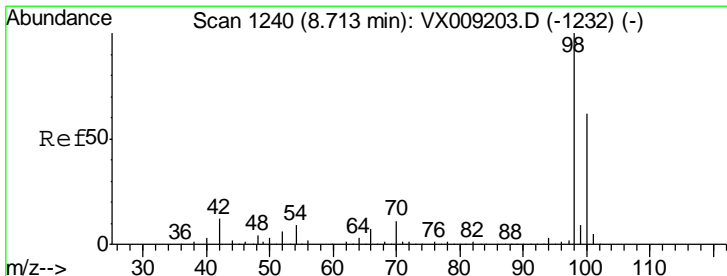
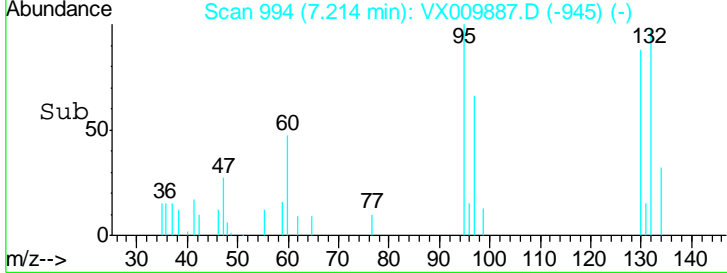
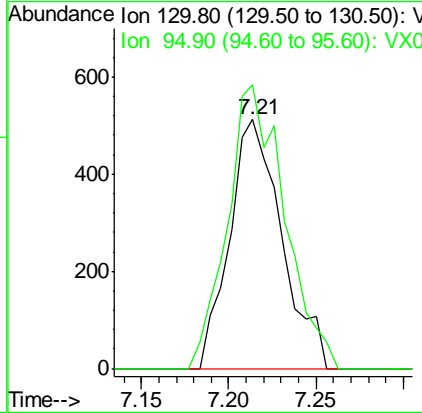
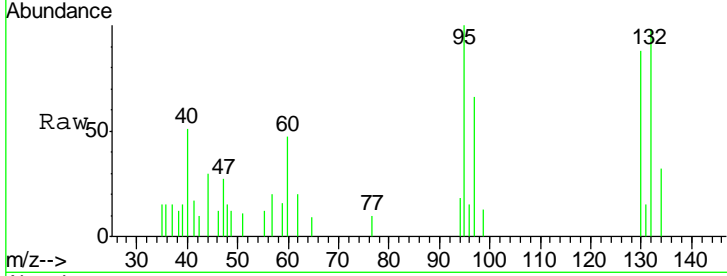


#44
 Trichloroethene
 Concen: 0.528 ug/l
 RT: 7.21 min Scan# 994
 Delta R.T. 0.00 min
 Lab File: VX009887.D
 Acq: 24 May 2019 15:24

Instrument :
 MSVOA_X
ClientSampled :
 S36-0154

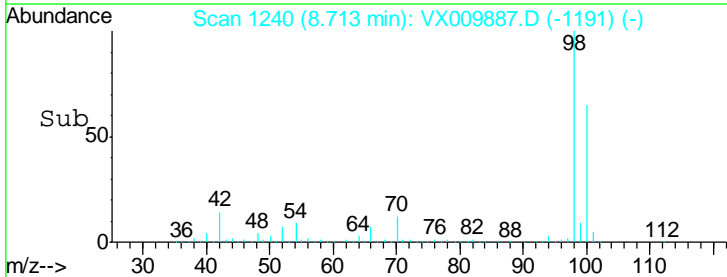
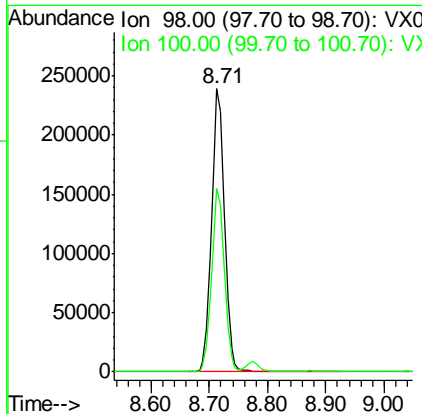
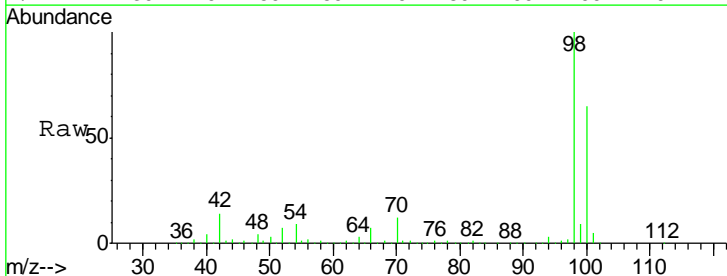
Tgt Ion	Resp	Lower	Upper
130	1068		
95	113.9	0.0	199.2

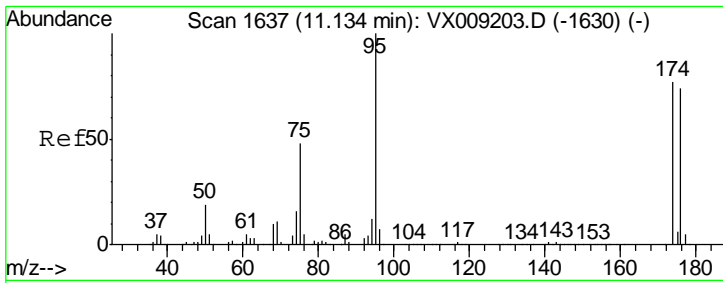
Manual Integrations
APPROVED
 MMDadoda
 5/28/2019 9:52:13 AM



#50
 Toluene-d8
 Concen: 50.365 ug/l
 RT: 8.71 min Scan# 1240
 Delta R.T. 0.00 min
 Lab File: VX009887.D
 Acq: 24 May 2019 15:24

Tgt Ion	Resp	Lower	Upper
98	371902		
100	63.5	51.2	76.8



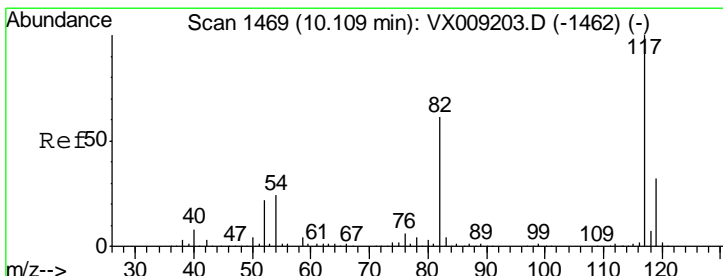
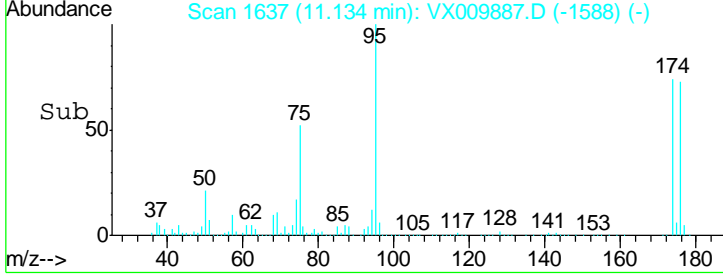
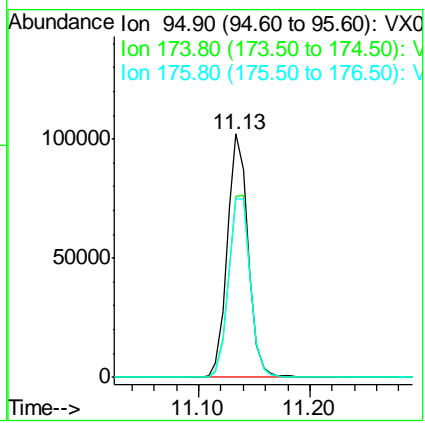
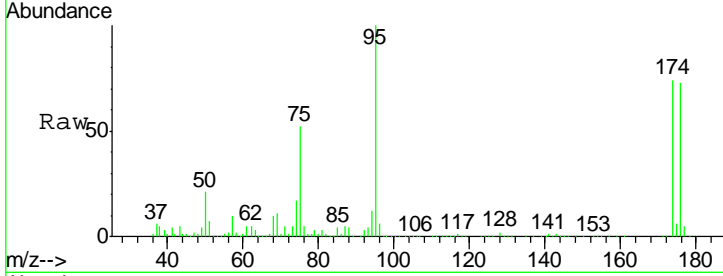


#62
 4-Bromofluorobenzene
 Concen: 49.037 ug/l
 RT: 11.13 min Scan# 1637
 Delta R.T. 0.00 min
 Lab File: VX009887.D
 Acq: 24 May 2019 15:24

Instrument : MSVOA_X
 Client Sampled : S36-0154

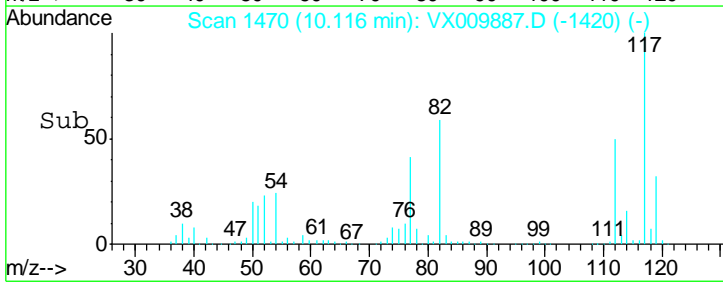
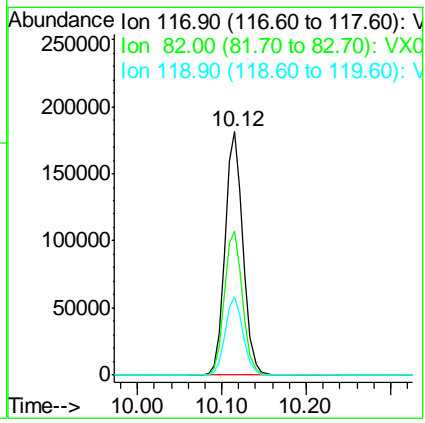
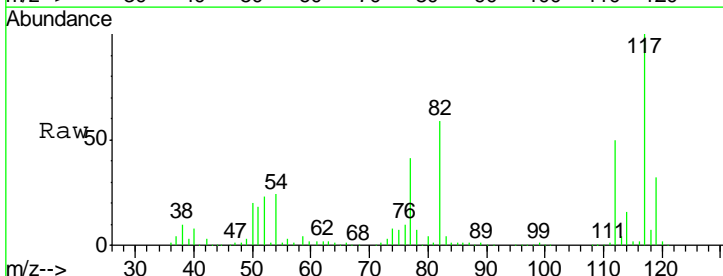
Tgt Ion	Resp	Lower	Upper
95	131571		
95	100		
174	78.1	0.0	161.6
176	76.7	0.0	159.2

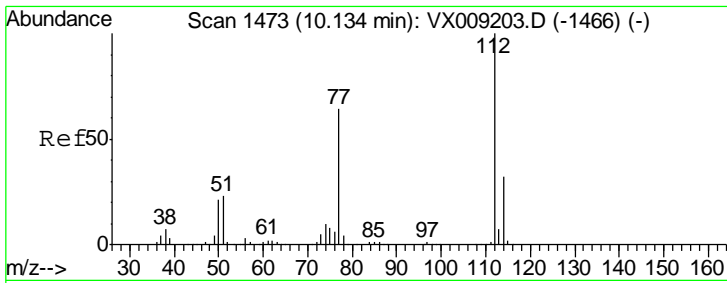
Manual Integrations
APPROVED
 MMDadoda
 5/28/2019 9:52:13 AM



#63
 Chlorobenzene-d5
 Concen: 50.000 ug/l
 RT: 10.12 min Scan# 1470
 Delta R.T. 0.01 min
 Lab File: VX009887.D
 Acq: 24 May 2019 15:24

Tgt Ion	Resp	Lower	Upper
117	264295		
117	100		
82	58.9	48.8	73.2
119	32.2	25.8	38.6





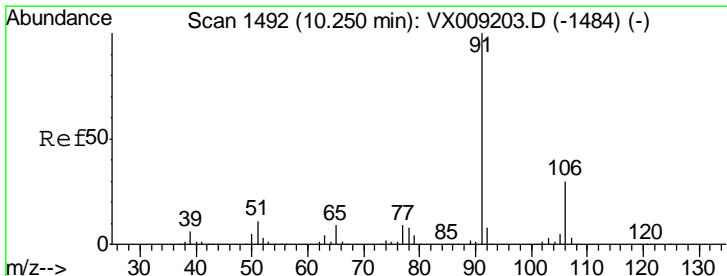
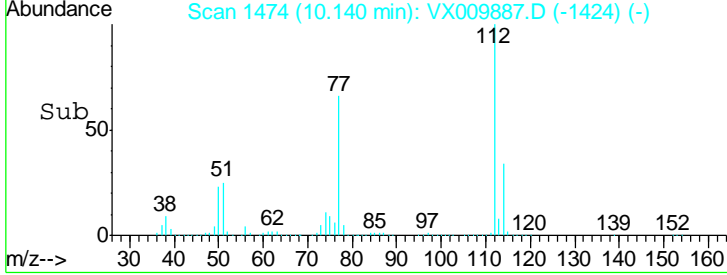
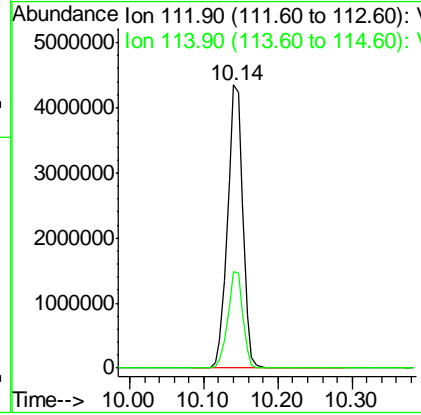
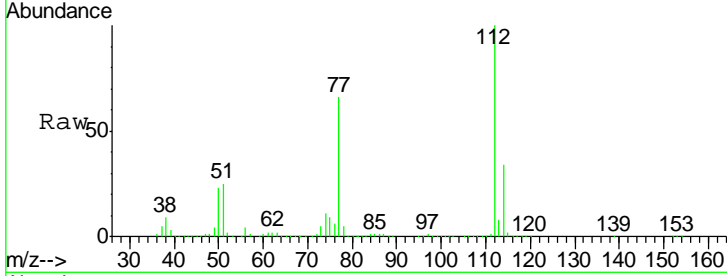
#65
 Chlorobenzene
 Concen: 1174.348 ug/l
 RT: 10.14 min Scan# 1474
 Delta R.T. 0.01 min
 Lab File: VX009887.D
 Acq: 24 May 2019 15:24

Instrument : MSVOA_X
 ClientSampled : S36-0154

Tgt Ion: 112 Resp: 6208882

Ion	Ratio	Lower	Upper
112	100		
114	34.3	25.5	38.3

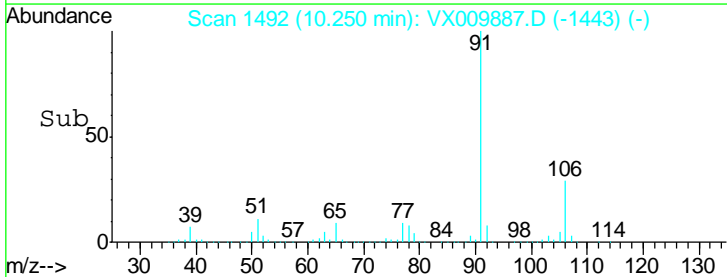
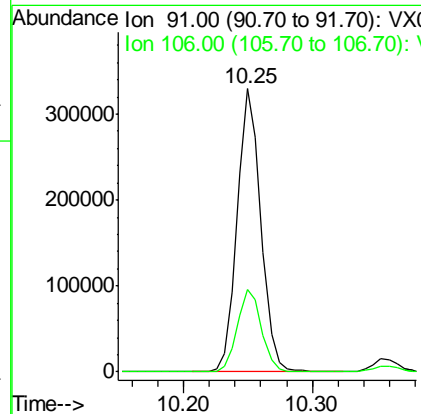
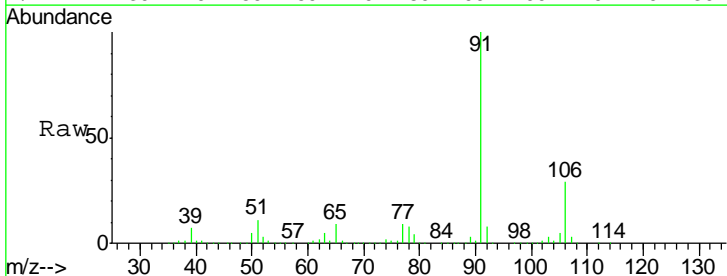
Manual Integrations
APPROVED
 MMDadoda
 5/28/2019 9:52:13 AM

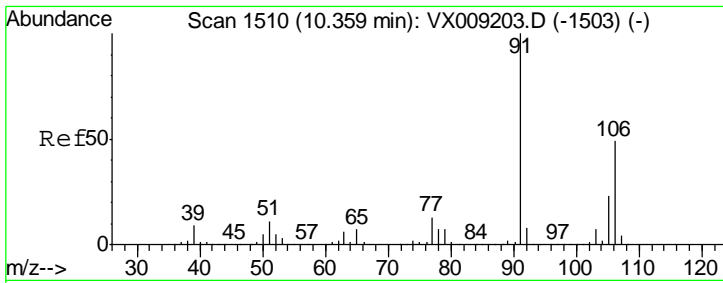


#67
 Ethyl Benzene
 Concen: 43.432 ug/l
 RT: 10.25 min Scan# 1492
 Delta R.T. 0.00 min
 Lab File: VX009887.D
 Acq: 24 May 2019 15:24

Tgt Ion: 91 Resp: 422602

Ion	Ratio	Lower	Upper
91	100		
106	29.3	24.0	36.0





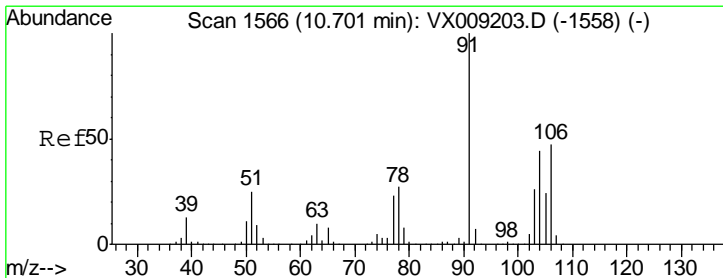
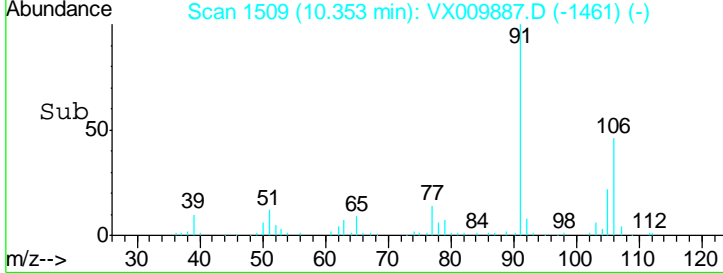
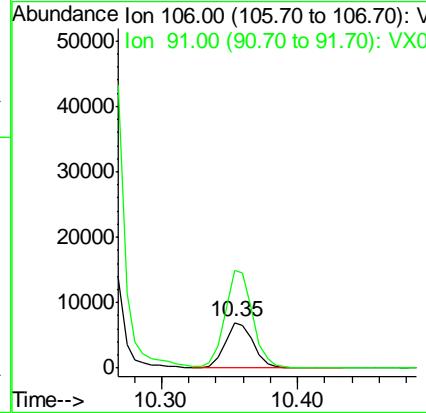
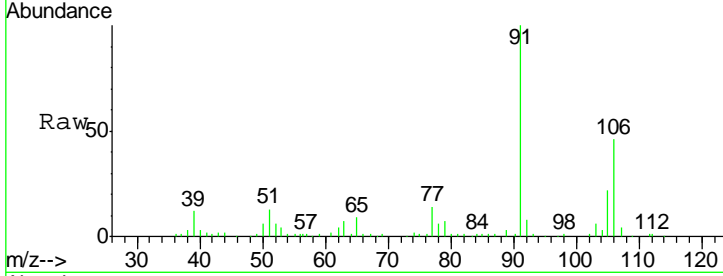
#68
 m/p-Xylenes
 Concen: 2.835 ug/l
 RT: 10.35 min Scan# 1509
 Delta R.T. -0.01 min
 Lab File: VX009887.D
 Acq: 24 May 2019 15:24

Instrument : MSVOA_X
 ClientSampled : S36-0154

Tgt Ion	Resp	Lower	Upper
106	10080		
91	209.0	164.0	246.0

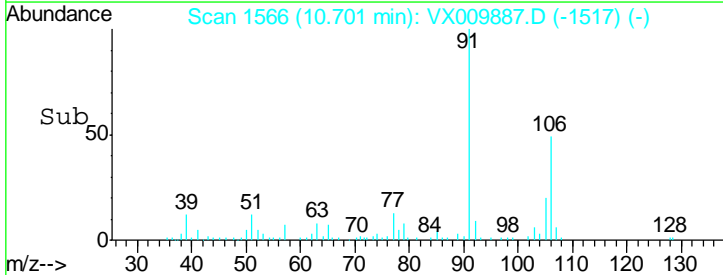
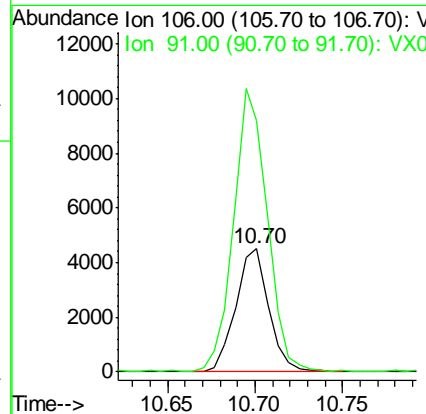
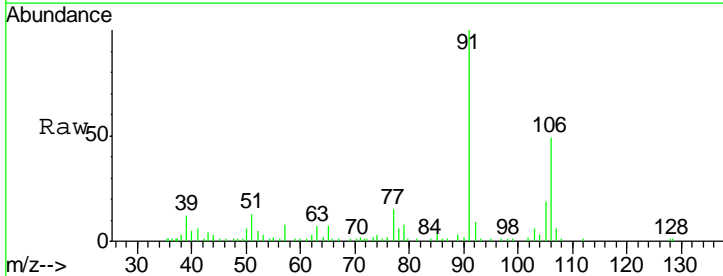
Manual Integrations
 APPROVED

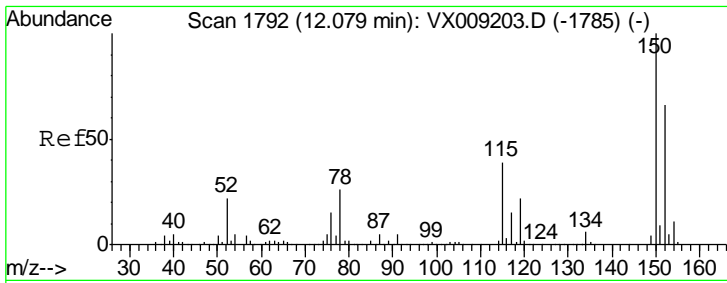
MMDadoda
 5/28/2019 9:52:13 AM



#69
 o-Xylene
 Concen: 1.692 ug/l
 RT: 10.70 min Scan# 1566
 Delta R.T. 0.00 min
 Lab File: VX009887.D
 Acq: 24 May 2019 15:24

Tgt Ion	Resp	Lower	Upper
106	5937		
91	233.4	109.5	328.4





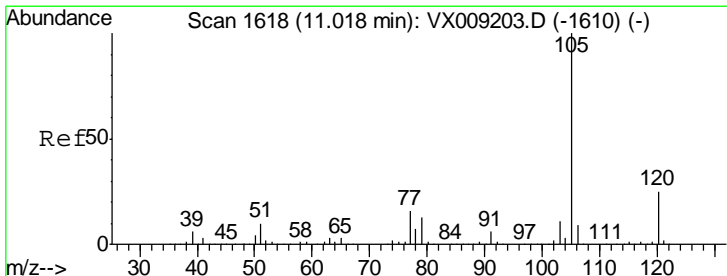
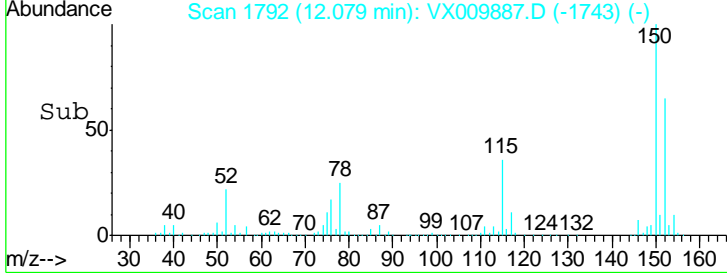
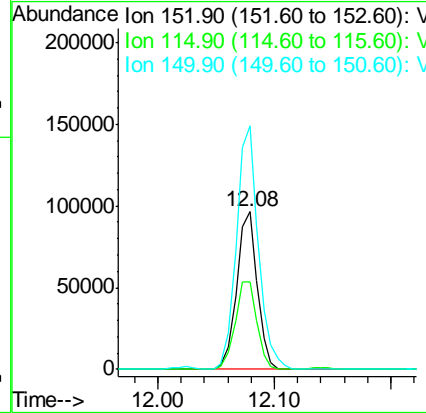
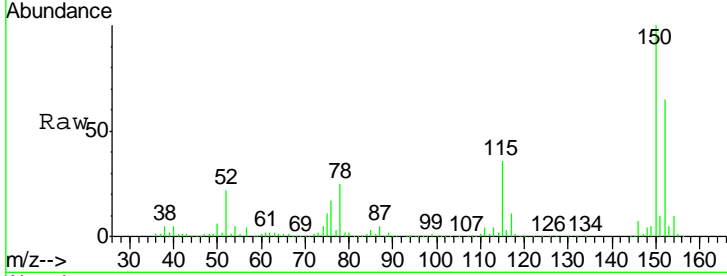
#72
 1,4-Dichlorobenzene-d4
 Concen: 50.000 ug/l
 RT: 12.08 min Scan# 1792
 Delta R.T. 0.00 min
 Lab File: VX009887.D
 Acq: 24 May 2019 15:24

Instrument : MSVOA_X
 Client Sampled : S36-0154

Tgt Ion	Resp	Lower	Upper
152	118566		
152	100		
115	58.7	41.2	123.6
150	165.1	0.0	346.4

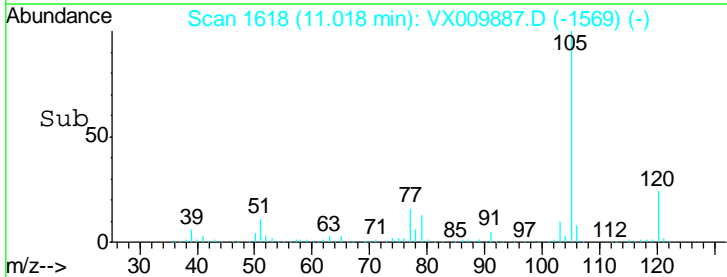
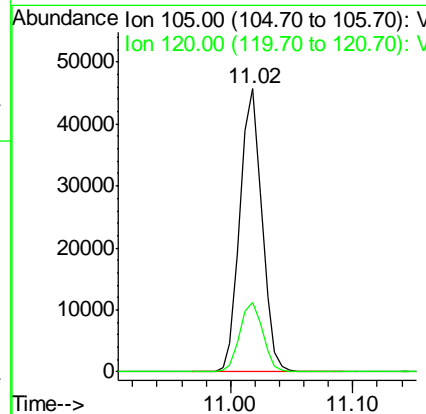
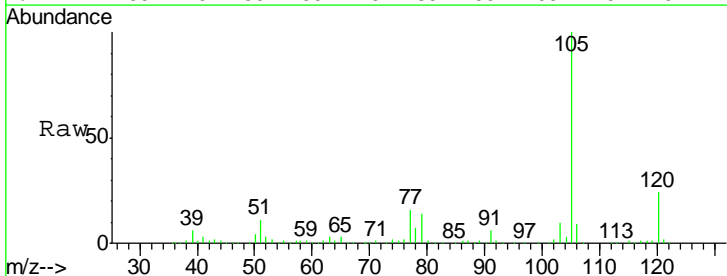
Manual Integrations
 APPROVED

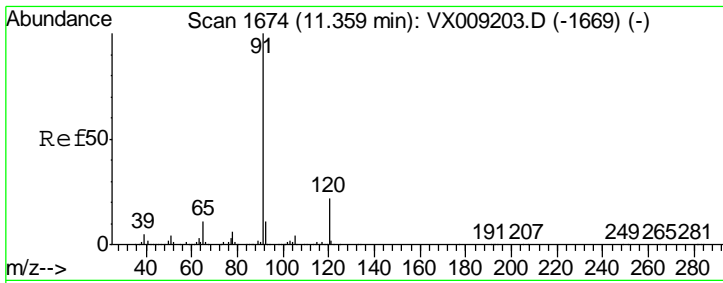
MMDadoda
 5/28/2019 9:52:13 AM



#73
 Isopropylbenzene
 Concen: 6.574 ug/l
 RT: 11.02 min Scan# 1618
 Delta R.T. 0.00 min
 Lab File: VX009887.D
 Acq: 24 May 2019 15:24

Tgt Ion	Resp	Lower	Upper
105	56685		
105	100		
120	25.5	12.8	38.3



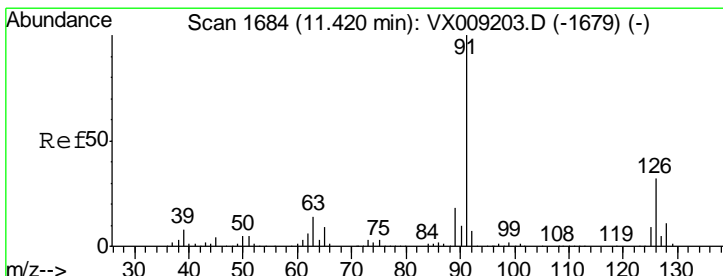
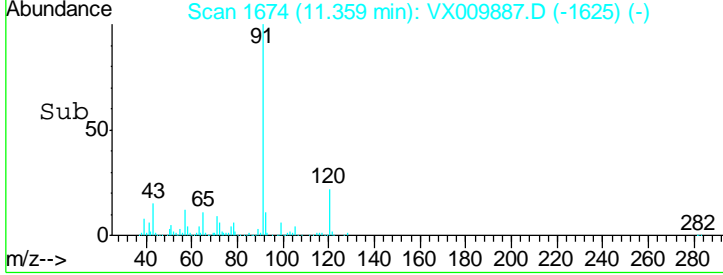
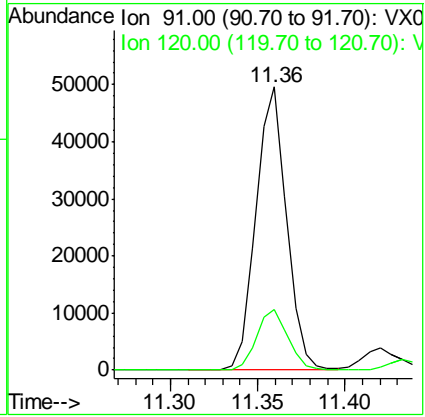
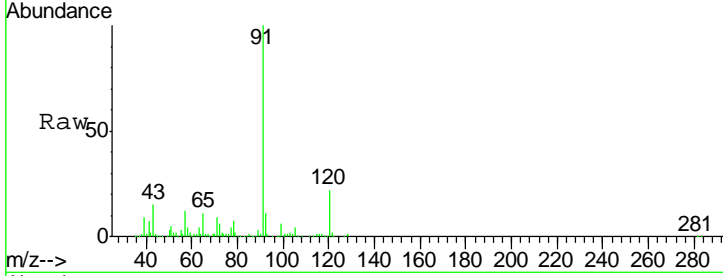


#78
 n-propylbenzene
 Concen: 6.126 ug/l
 RT: 11.36 min Scan# 1674
 Delta R.T. 0.00 min
 Lab File: VX009887.D
 Acq: 24 May 2019 15:24

Instrument : MSVOA_X
 ClientSampled : S36-0154

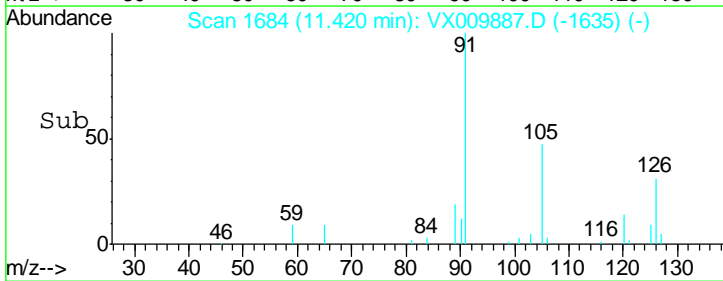
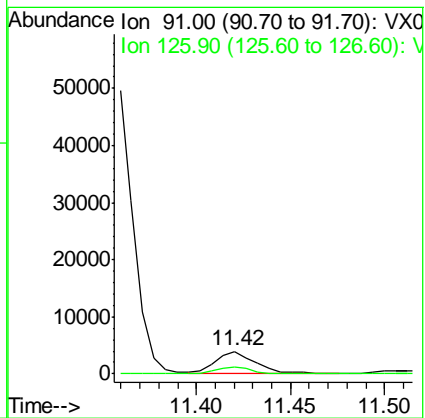
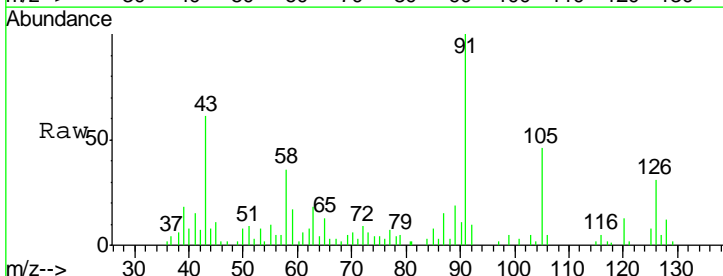
Tgt Ion	Resp	Lower	Upper
91	100		
120	21.8	11.0	33.0

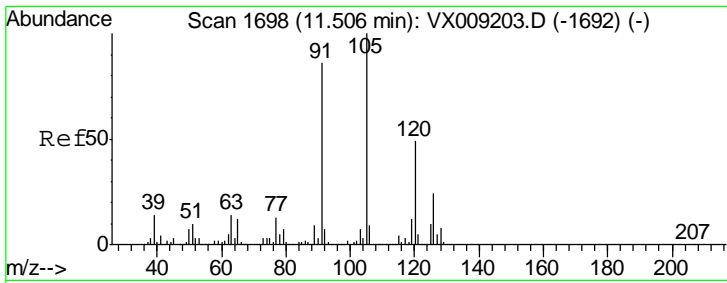
Manual Integrations
APPROVED
 MMDadoda
 5/28/2019 9:52:13 AM



#79
 2-Chlorotoluene
 Concen: 0.935 ug/l
 RT: 11.42 min Scan# 1684
 Delta R.T. 0.00 min
 Lab File: VX009887.D
 Acq: 24 May 2019 15:24

Tgt Ion	Resp	Lower	Upper
91	100		
126	29.4	16.3	48.9



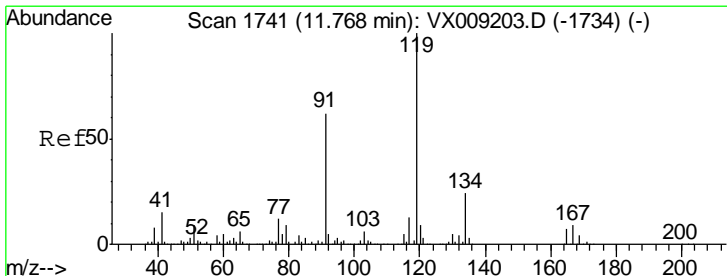
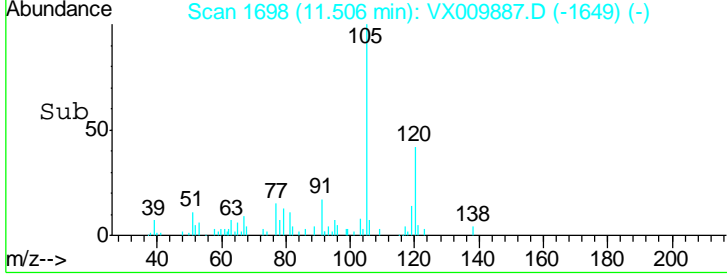
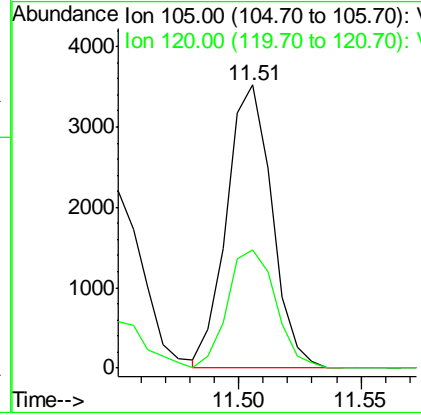
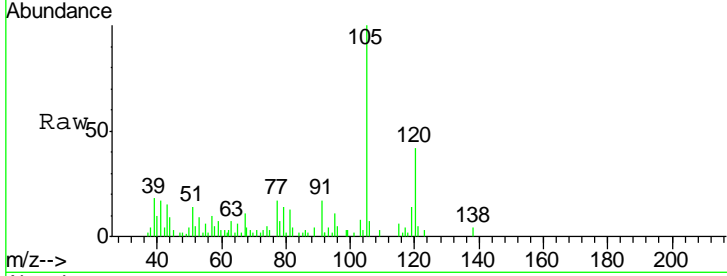


#80
 1,3,5-Trimethylbenzene
 Concen: 0.624 ug/l
 RT: 11.51 min Scan# 1698
 Delta R.T. 0.00 min
 Lab File: VX009887.D
 Acq: 24 May 2019 15:24

Instrument : MSVOA_X
 Client Sampled : S36-0154

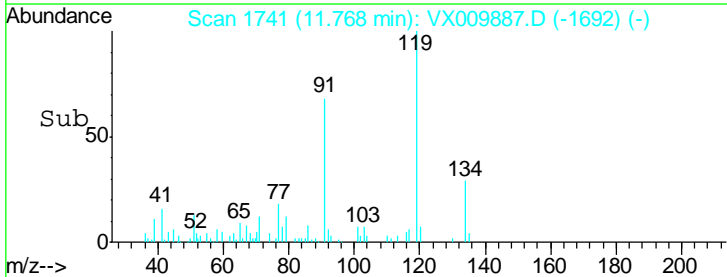
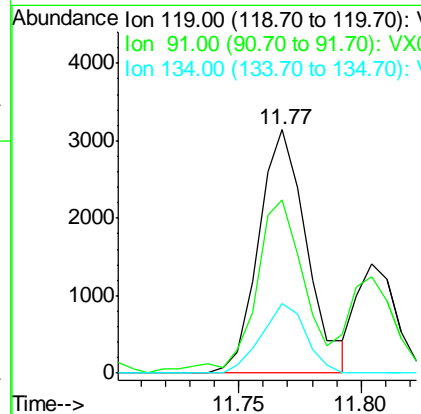
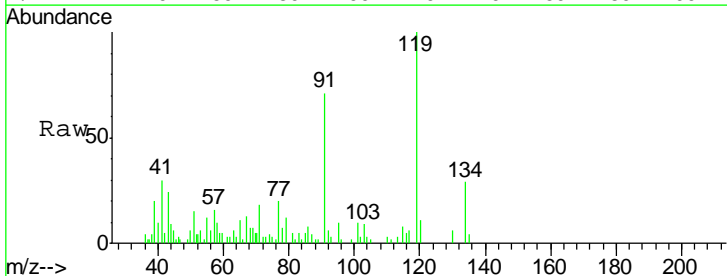
Tgt Ion	Resp	Lower	Upper
105	4533		
105	100		
120	44.6	24.3	72.9

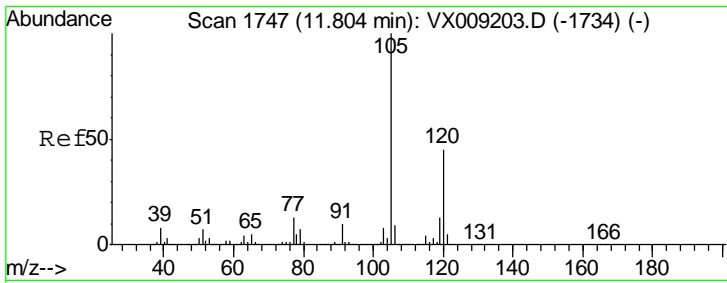
Manual Integrations
APPROVED
 MMDadoda
 5/28/2019 9:52:13 AM



#83
 tert-Butylbenzene
 Concen: 0.607 ug/l
 RT: 11.77 min Scan# 1741
 Delta R.T. 0.00 min
 Lab File: VX009887.D
 Acq: 24 May 2019 15:24

Tgt Ion	Resp	Lower	Upper
119	4286		
119	100		
91	71.6	29.5	88.5
134	26.8	11.4	34.1





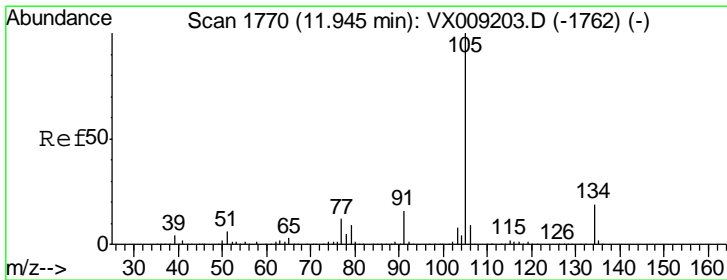
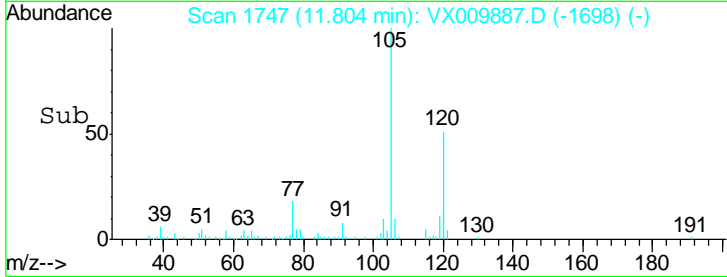
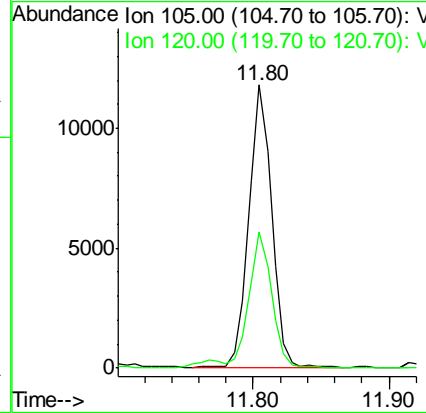
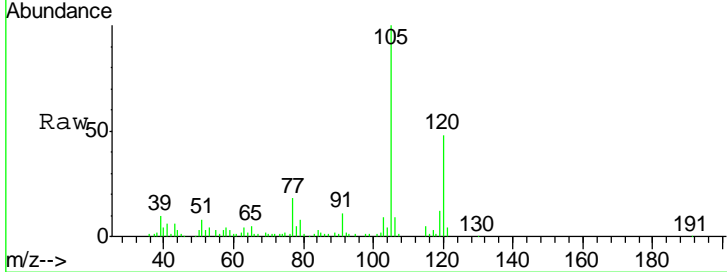
#84
 1,2,4-Trimethylbenzene
 Concen: 1.928 ug/l
 RT: 11.80 min Scan# 1747
 Delta R.T. 0.00 min
 Lab File: VX009887.D
 Acq: 24 May 2019 15:24

Instrument : MSVOA_X
 ClientSampled : S36-0154

Tgt Ion	Resp	Lower	Upper
105	14048		
120	47.4	22.0	66.0

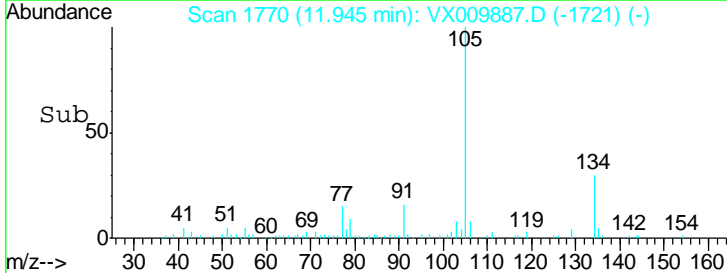
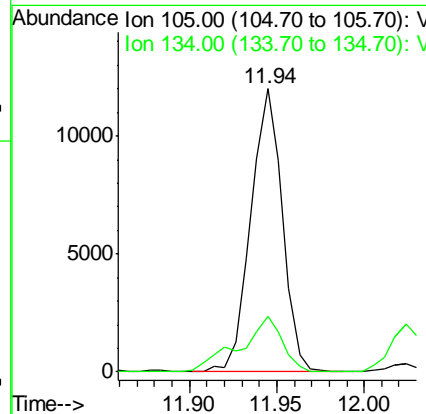
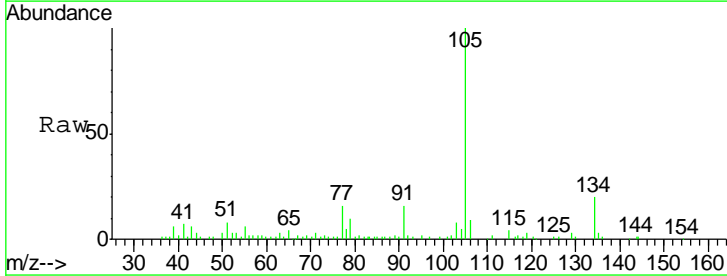
Manual Integrations
 APPROVED

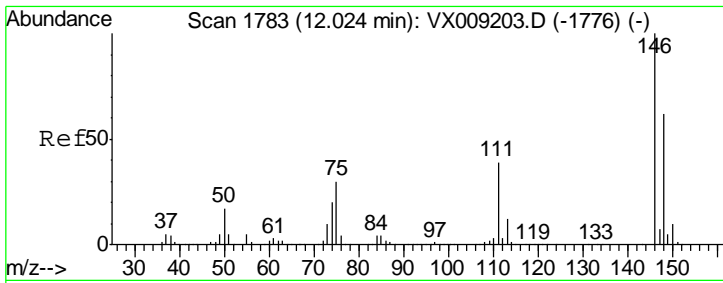
MMDadoda
 5/28/2019 9:52:13 AM



#85
 sec-Butylbenzene
 Concen: 1.791 ug/l
 RT: 11.94 min Scan# 1770
 Delta R.T. 0.00 min
 Lab File: VX009887.D
 Acq: 24 May 2019 15:24

Tgt Ion	Resp	Lower	Upper
105	14992		
134	26.7	9.7	28.9



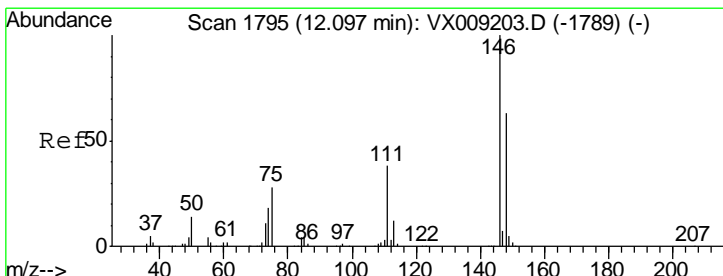
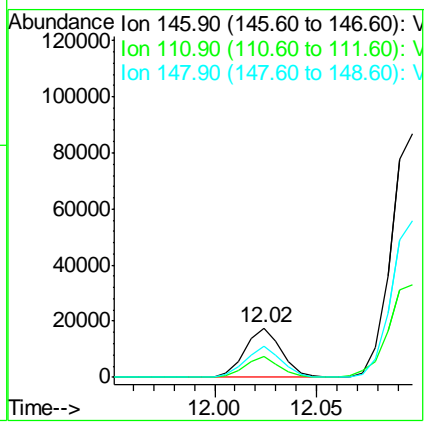
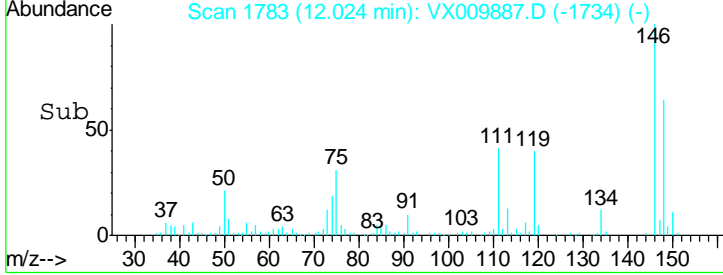
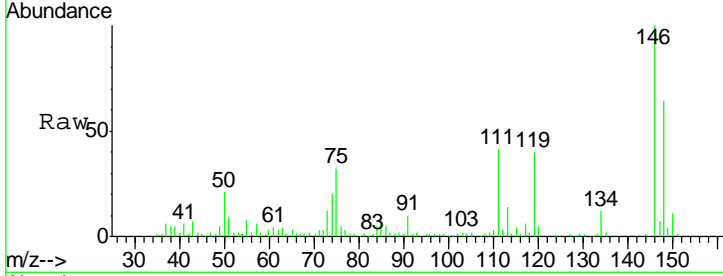


#87
 1,3-Dichlorobenzene
 Concen: 5.692 ug/l
 RT: 12.02 min Scan# 1783
 Delta R.T. 0.00 min
 Lab File: VX009887.D
 Acq: 24 May 2019 15:24

Instrument : MSVOA_X
 ClientSampled : S36-0154

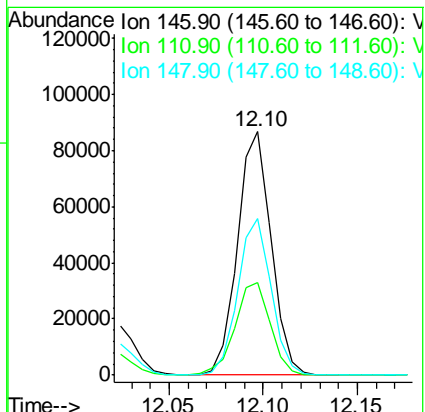
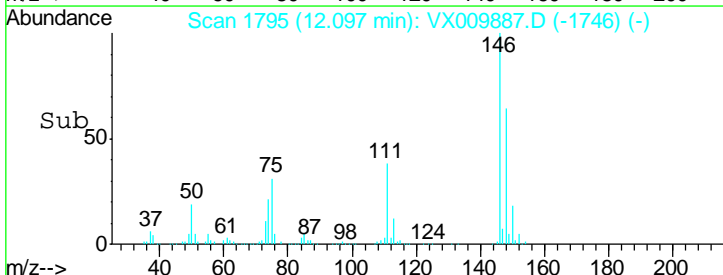
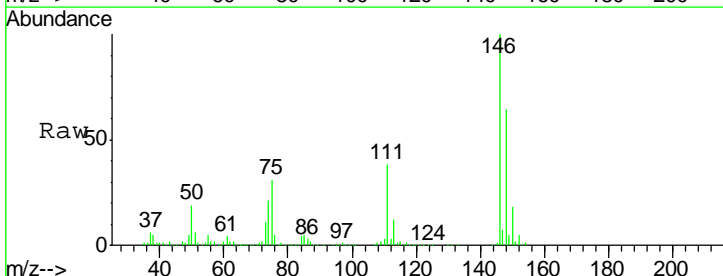
Tgt Ion	Resp	Lower	Upper
146	21713		
111	40.3	20.0	59.9
148	63.2	31.8	95.3

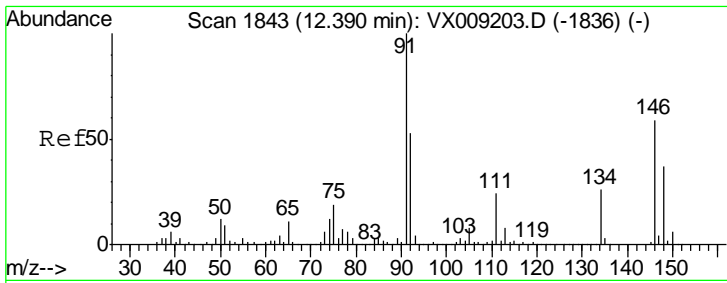
Manual Integrations
APPROVED
 MMDadoda
 5/28/2019 9:52:13 AM



#88
 1,4-Dichlorobenzene
 Concen: 27.966 ug/l
 RT: 12.10 min Scan# 1795
 Delta R.T. 0.00 min
 Lab File: VX009887.D
 Acq: 24 May 2019 15:24

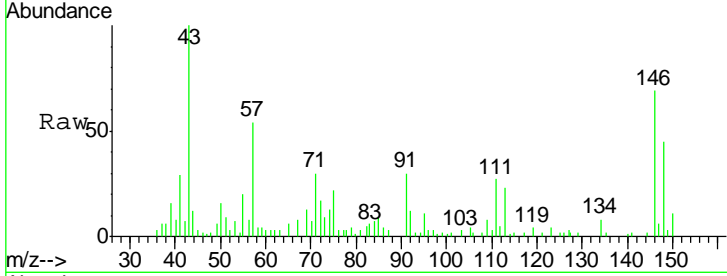
Tgt Ion	Resp	Lower	Upper
146	107561		
111	40.0	19.6	58.8
148	64.0	31.8	95.3





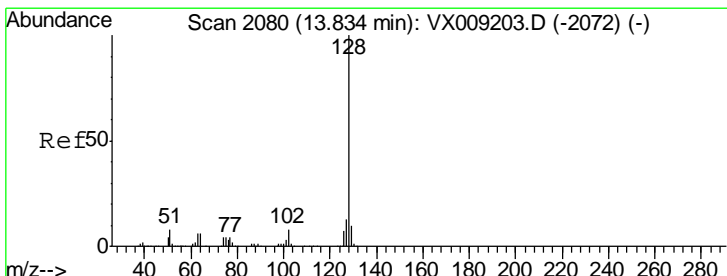
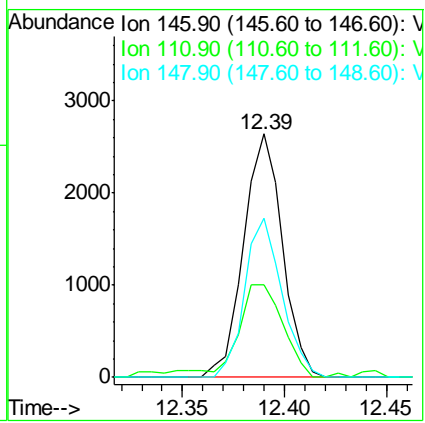
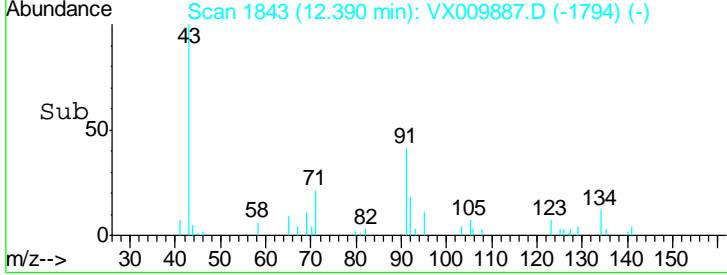
#91
 1,2-Dichlorobenzene
 Concen: 0.897 ug/l
 RT: 12.39 min Scan# 1843
 Delta R.T. 0.00 min
 Lab File: VX009887.D
 Acq: 24 May 2019 15:24

Instrument : MSVOA_X
 ClientSampled : S36-0154

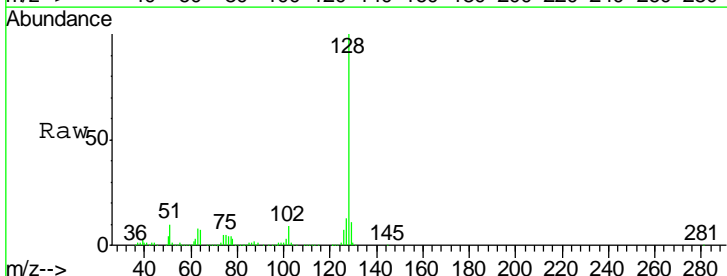


Tgt Ion	Resp	Lower	Upper
146	3485		
146	100		
111	47.3	20.8	62.4
148	63.0	31.9	95.9

Manual Integrations APPROVED
 MMDadoda
 5/28/2019 9:52:13 AM



#95
 Naphthalene
 Concen: 9.974 ug/l
 RT: 13.83 min Scan# 2079
 Delta R.T. -0.01 min
 Lab File: VX009887.D
 Acq: 24 May 2019 15:24



Tgt Ion	Resp	Lower	Upper
128	86227		
128	100		
127	13.3	10.4	15.6
129	11.6	8.6	13.0

