

Data Path : Z:\VOASRV\HPCHEM1\MSVOA X\DATA\VX052419\  
 Data File : VX009889.D  
 Acq On : 24 May 2019 16:10  
 Operator : JC/SP  
 Sample : K3032-01  
 Misc : 5.0mL/MSVOA X/WATER  
 ALS Vial : 16 Sample Multiplier: 1

Instrument :  
 MSVOA\_X  
 ClientSampleId :  
 S32-0657

Quant Time: May 25 01:26:16 2019  
 Quant Method : Z:\VOASRV\HPCHEM1\MSVOA\_X\METHOD\82X042919W.M  
 Quant Title : SW846 8260  
 QLast Update : Thu May 09 07:31:15 2019  
 Response via : Initial Calibration

Internal Standards	R.T.	QIon	Response	Conc	Units	Dev(Min)
1) Pentafluorobenzene	5.67	168	177509	50.00	ug/l	0.00
34) 1,4-Difluorobenzene	6.86	114	286132	50.00	ug/l	0.00
63) Chlorobenzene-d5	10.11	117	252853	50.00	ug/l	0.00
72) 1,4-Dichlorobenzene-d4	12.08	152	110127	50.00	ug/l	0.00

## System Monitoring Compounds

33) 1,2-Dichloroethane-d4	6.06	65	122117	50.39	ug/l	0.00
Spiked Amount				50.000		
			Recovery	=	100.78%	
35) Dibromofluoromethane	5.50	113	88032	48.94	ug/l	0.00
Spiked Amount				50.000		
			Recovery	=	97.88%	
50) Toluene-d8	8.71	98	362374	49.90	ug/l	0.00
Spiked Amount				50.000		
			Recovery	=	99.80%	
62) 4-Bromofluorobenzene	11.13	95	123573	46.83	ug/l	0.00
Spiked Amount				50.000		
			Recovery	=	93.66%	

## Target Compounds

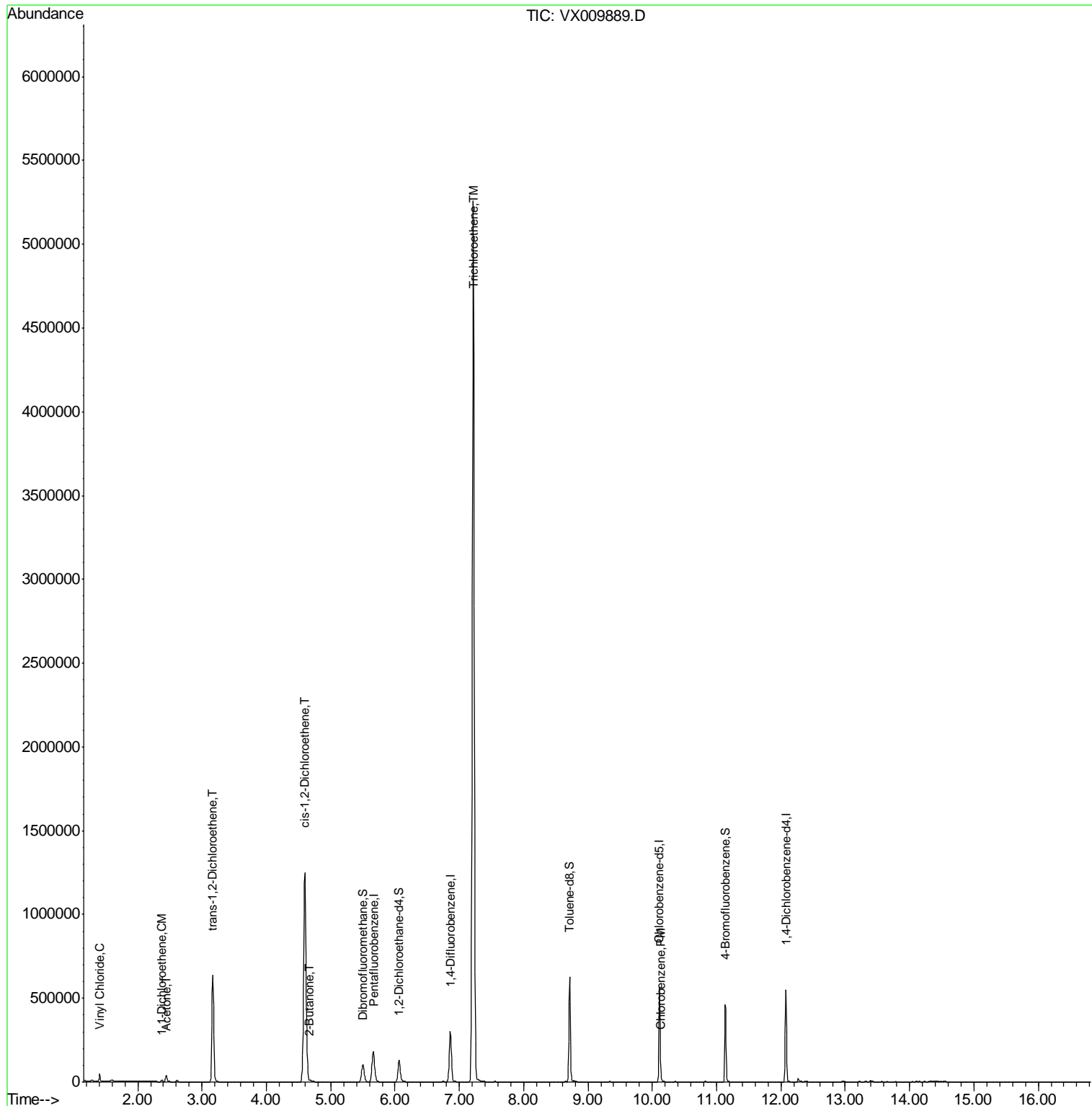
						Qvalue
4) Vinyl Chloride	1.41	62	29456	13.526	ug/l	98
12) 1,1-Dichloroethene	2.37	96	3831	2.300	ug/l	100
16) Acetone	2.44	43	43076	33.106	ug/l	95
21) trans-1,2-Dichloroethene	3.17	96	248963	137.831	ug/l	96
25) 2-Butanone	4.68	43	8515	4.211	ug/l	94
27) cis-1,2-Dichloroethene	4.60	96	760290	352.637	ug/l	91
44) Trichloroethene	7.22	130	1970136	990.288	ug/l	98
65) Chlorobenzene	10.14	112	3683	0.728	ug/l	97

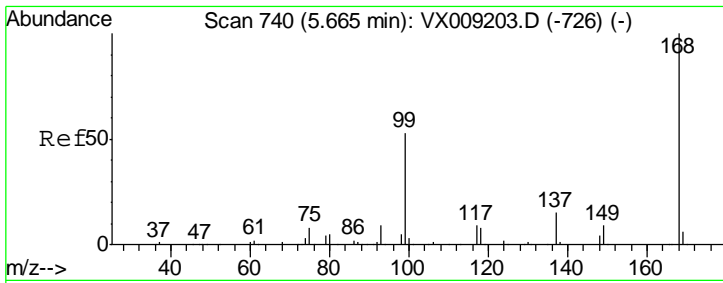
(#) = qualifier out of range (m) = manual integration (+) = signals summed

Data Path : Z:\VOASRV\HPCHEM1\MSVOA X\DATA\VX052419\  
 Data File : VX009889.D  
 Acq On : 24 May 2019 16:10  
 Operator : JC/SP  
 Sample : K3032-01  
 Misc : 5.0mL/MSVOA X/WATER  
 ALS Vial : 16 Sample Multiplier: 1

Instrument :  
 MSVOA\_X  
 ClientSampled :  
 S32-0657

Quant Time: May 25 01:26:16 2019  
 Quant Method : Z:\VOASRV\HPCHEM1\MSVOA\_X\METHOD\82X042919W.M  
 Quant Title : SW846 8260  
 QLast Update : Thu May 09 07:31:15 2019  
 Response via : Initial Calibration

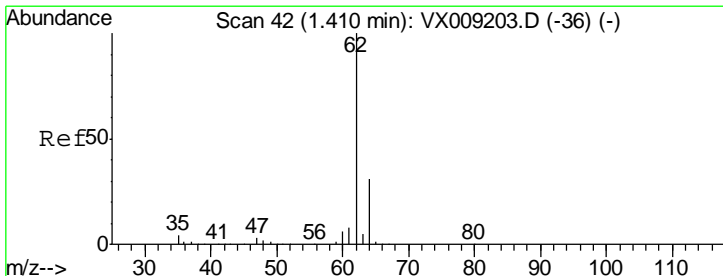
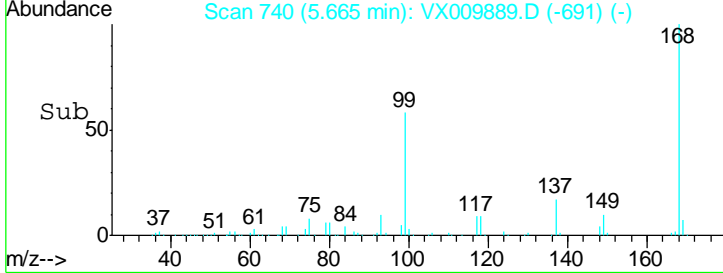
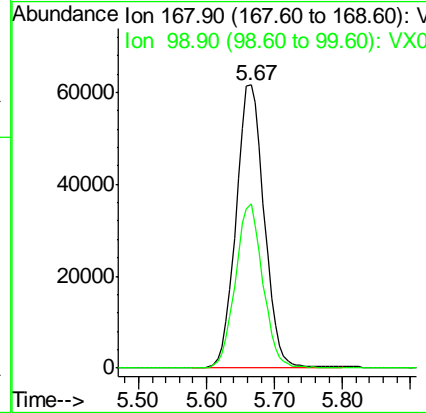
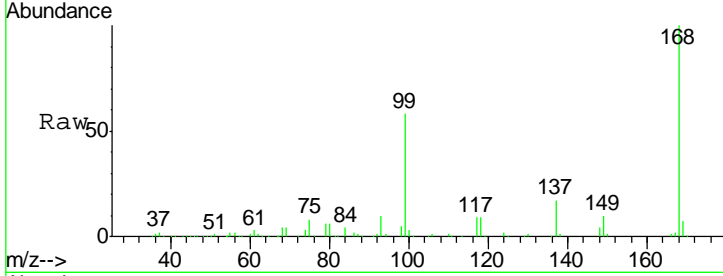




#1  
 Pentafluorobenzene  
 Concen: 50.000 ug/l  
 RT: 5.67 min Scan# 740  
 Delta R.T. -0.00 min  
 Lab File: VX009889.D  
 Acq: 24 May 2019 16:10

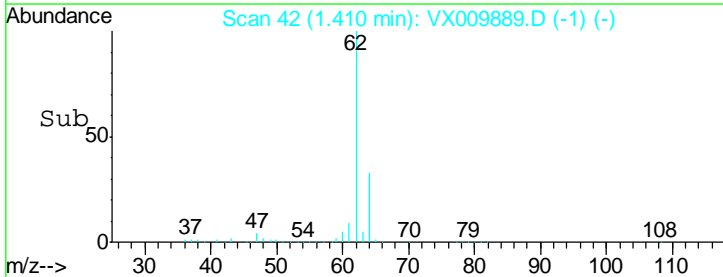
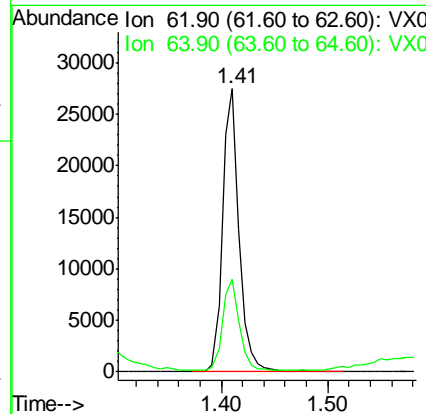
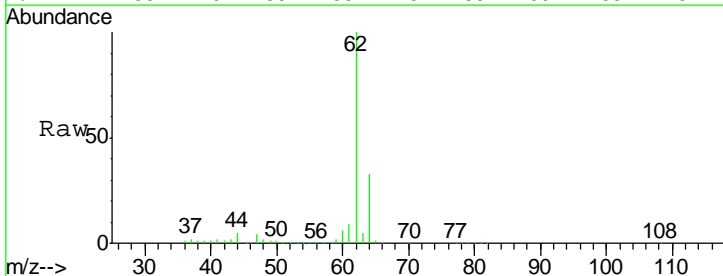
Instrument :  
 MSVOA\_X  
 ClientSampled :  
 S32-0657

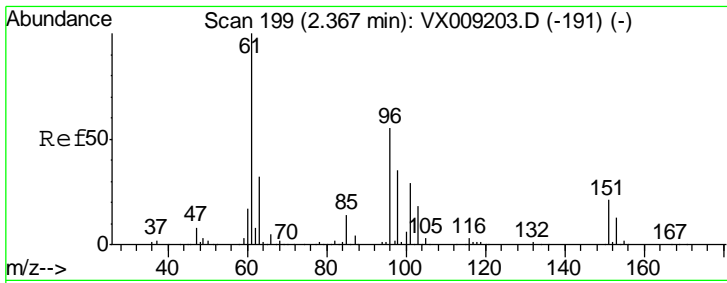
Tgt Ion: 168 Resp: 177509  
 Ion Ratio Lower Upper  
 168 100  
 99 58.0 42.3 63.5



#4  
 Vinyl Chloride  
 Concen: 13.526 ug/l  
 RT: 1.41 min Scan# 42  
 Delta R.T. -0.00 min  
 Lab File: VX009889.D  
 Acq: 24 May 2019 16:10

Tgt Ion: 62 Resp: 29456  
 Ion Ratio Lower Upper  
 62 100  
 64 32.0 24.6 36.8

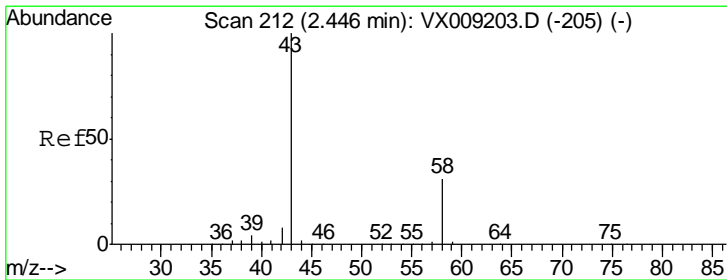
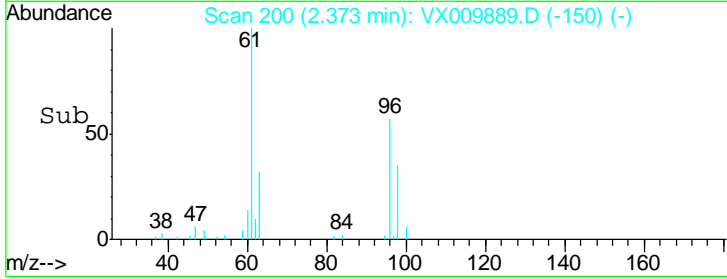
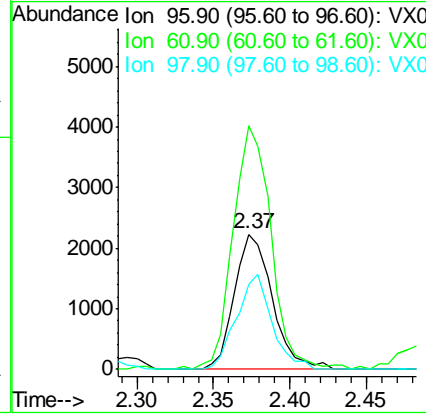
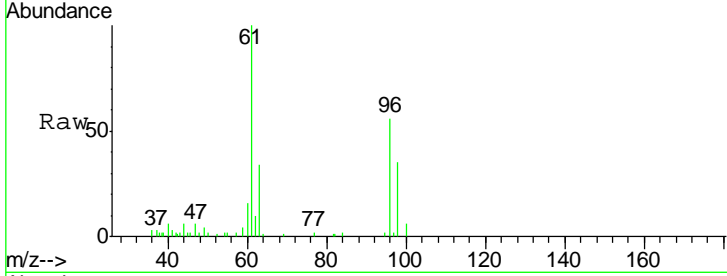




#12  
 1,1-Dichloroethene  
 Concen: 2.300 ug/l  
 RT: 2.37 min Scan# 200  
 Delta R.T. 0.01 min  
 Lab File: VX009889.D  
 Acq: 24 May 2019 16:10

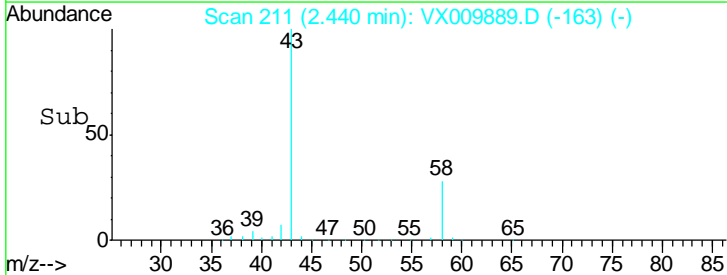
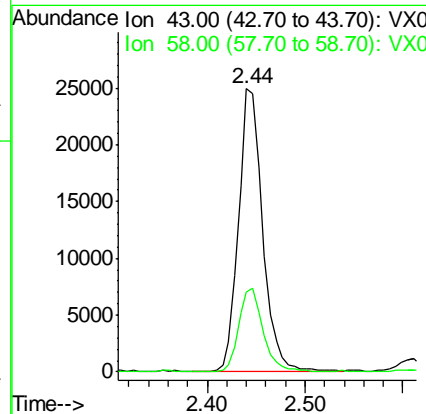
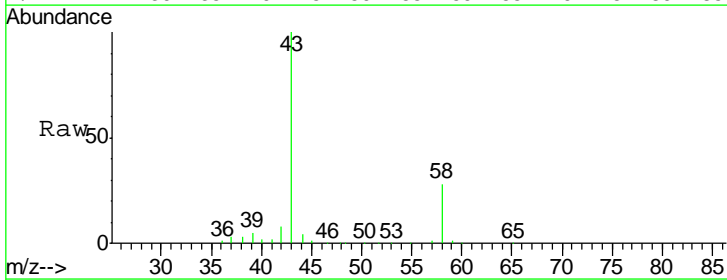
Instrument :  
 MSVOA\_X  
 ClientSampled :  
 S32-0657

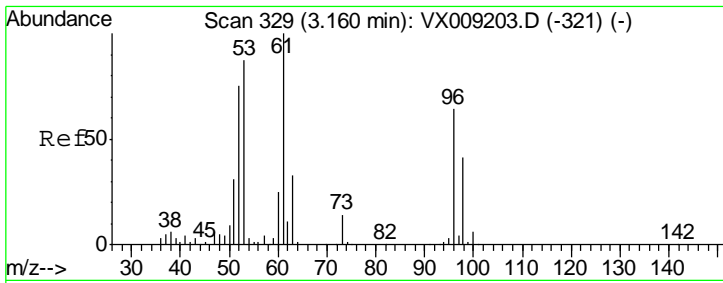
Tgt Ion	Resp	Lower	Upper
96	3831		
Ion Ratio			
96	100		
61	179.9	144.3	216.5
98	62.4	50.3	75.5



#16  
 Acetone  
 Concen: 33.106 ug/l  
 RT: 2.44 min Scan# 211  
 Delta R.T. -0.01 min  
 Lab File: VX009889.D  
 Acq: 24 May 2019 16:10

Tgt Ion	Resp	Lower	Upper
43	43076		
Ion Ratio			
43	100		
58	28.1	24.9	37.3

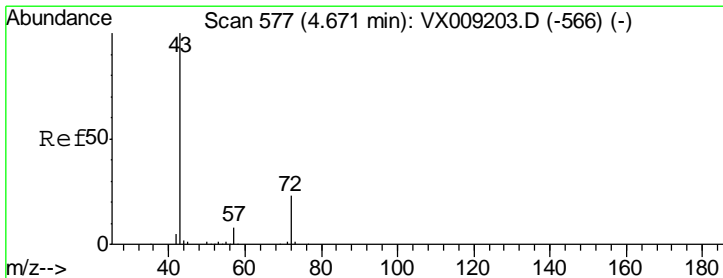
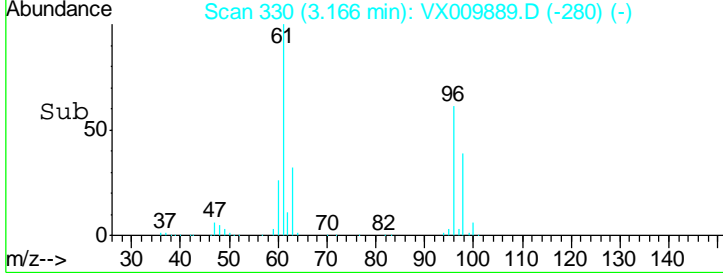
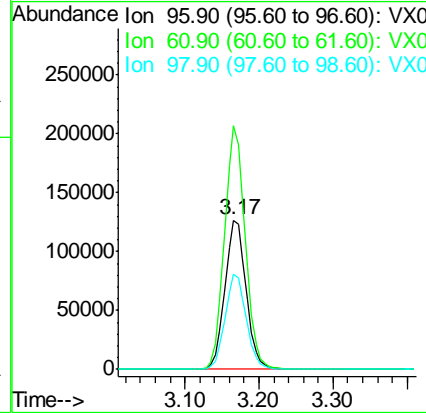
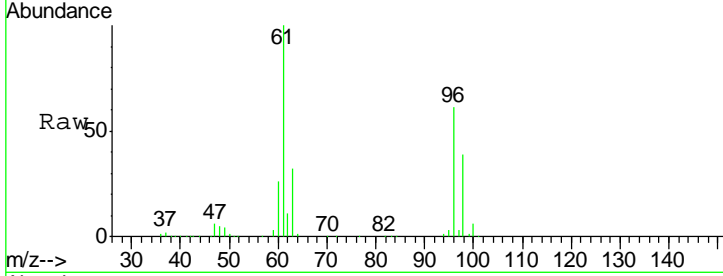




#21  
 trans-1,2-Dichloroethene  
 Concen: 137.831 ug/l  
 RT: 3.17 min Scan# 330  
 Delta R.T. 0.01 min  
 Lab File: VX009889.D  
 Acq: 24 May 2019 16:10

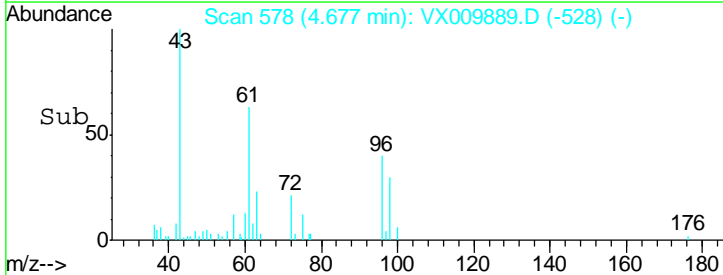
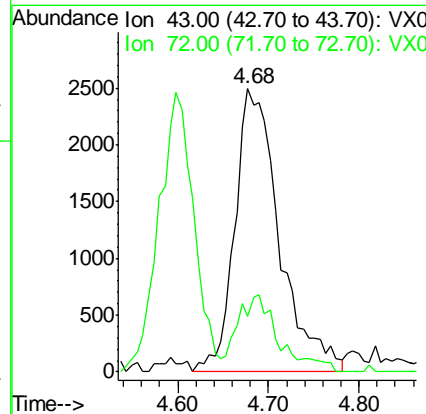
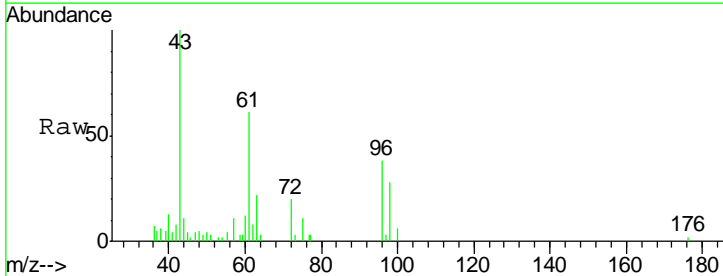
**Instrument :**  
 MSVOA\_X  
**ClientSampled :**  
 S32-0657

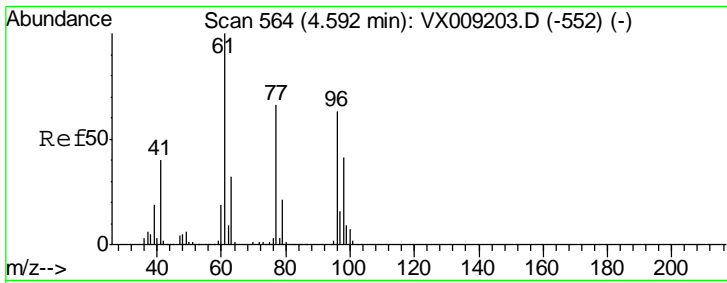
Tgt Ion	Resp	Lower	Upper
96	248963		
61	163.0	124.5	186.7
98	63.4	50.4	75.6



#25  
 2-Butanone  
 Concen: 4.211 ug/l  
 RT: 4.68 min Scan# 578  
 Delta R.T. 0.01 min  
 Lab File: VX009889.D  
 Acq: 24 May 2019 16:10

Tgt Ion	Resp	Lower	Upper
43	8515		
72	19.8	18.2	27.2

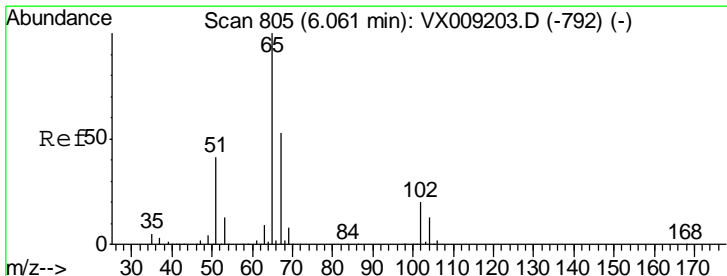
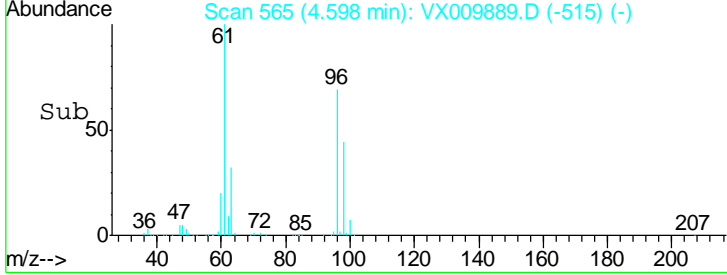
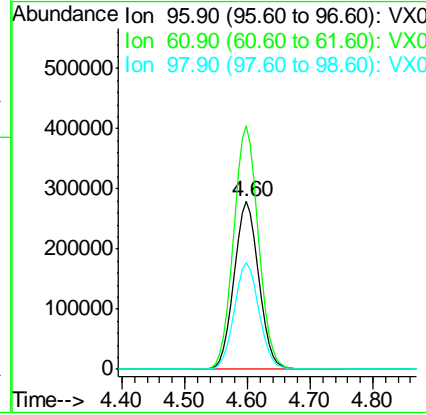
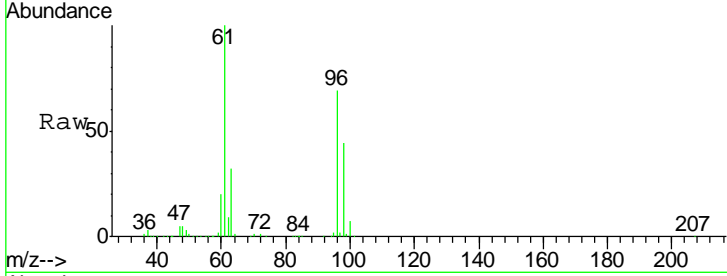




#27  
 cis-1,2-Dichloroethene  
 Concen: 352.637 ug/l  
 RT: 4.60 min Scan# 565  
 Delta R.T. 0.01 min  
 Lab File: VX009889.D  
 Acq: 24 May 2019 16:10

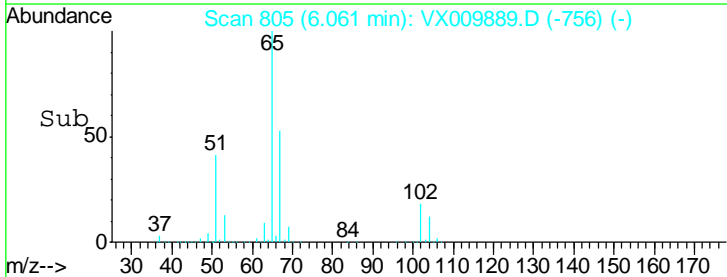
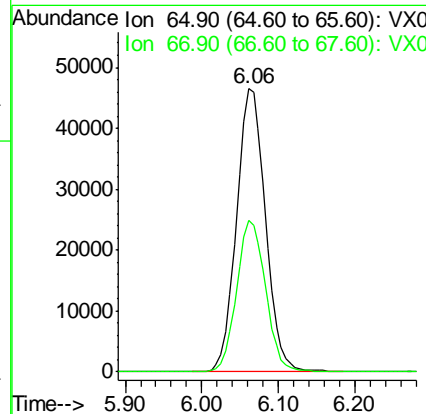
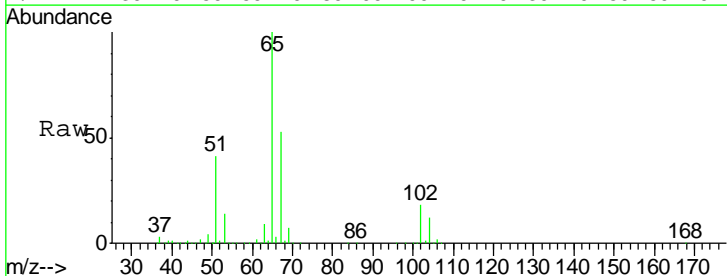
**Instrument :**  
 MSVOA\_X  
**ClientSampled :**  
 S32-0657

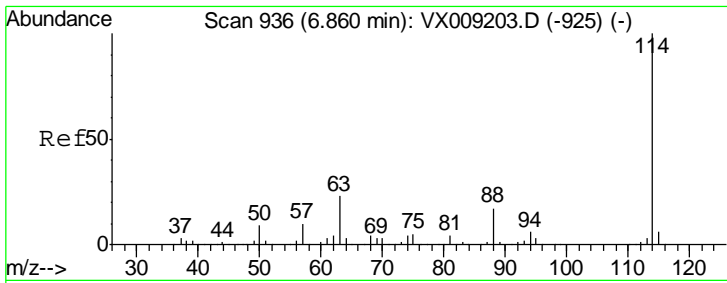
Tgt Ion	Resp	Lower	Upper
96	760290		
61	145.9	0.0	324.0
98	64.0	0.0	130.4



#33  
 1,2-Dichloroethane-d4  
 Concen: 50.395 ug/l  
 RT: 6.06 min Scan# 805  
 Delta R.T. -0.00 min  
 Lab File: VX009889.D  
 Acq: 24 May 2019 16:10

Tgt Ion	Resp	Lower	Upper
65	122117		
67	53.4	0.0	106.6

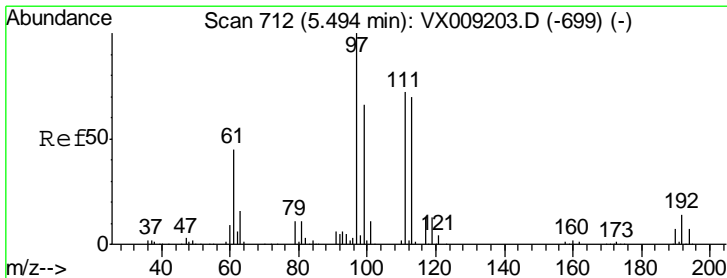
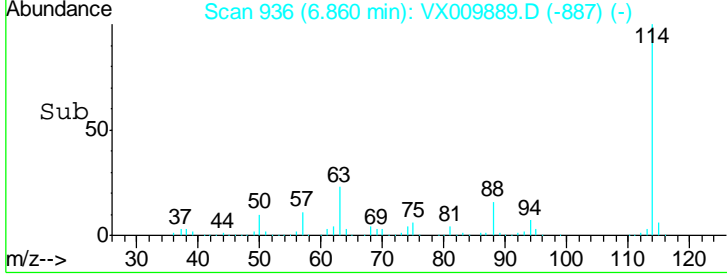
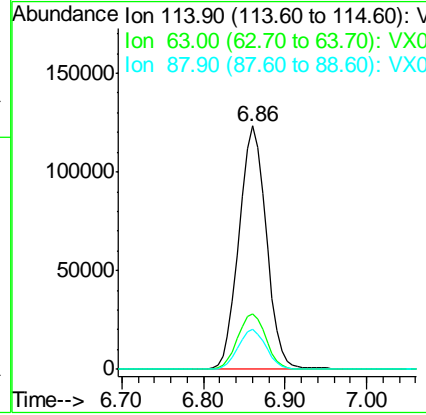
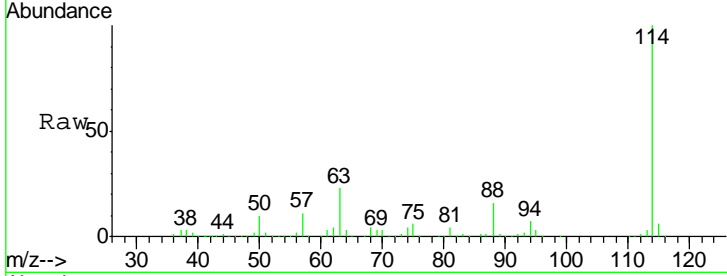




#34  
 1,4-Difluorobenzene  
 Concen: 50.000 ug/l  
 RT: 6.86 min Scan# 936  
 Delta R.T. -0.00 min  
 Lab File: VX009889.D  
 Acq: 24 May 2019 16:10

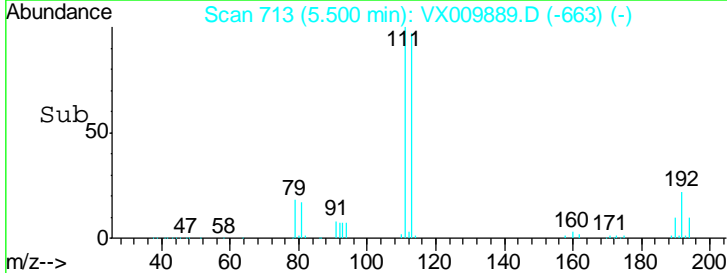
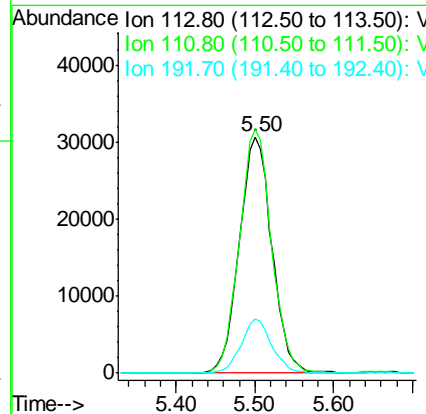
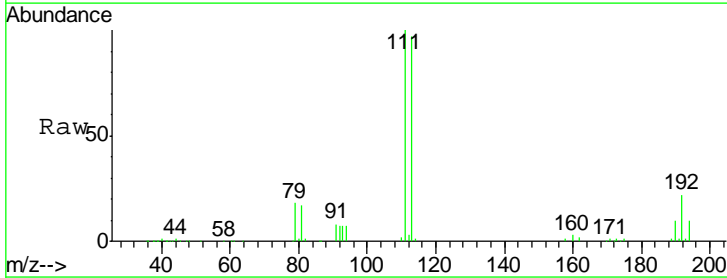
Instrument :  
 MSVOA\_X  
 ClientSampled :  
 S32-0657

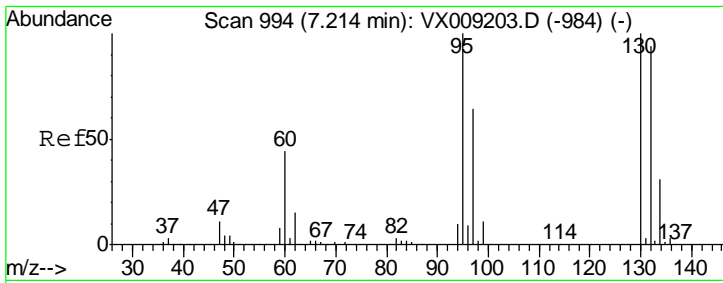
Tgt Ion	Resp	Lower	Upper
114	100		
63	23.0	0.0	45.6
88	16.5	0.0	33.2



#35  
 Dibromofluoromethane  
 Concen: 48.941 ug/l  
 RT: 5.50 min Scan# 713  
 Delta R.T. 0.01 min  
 Lab File: VX009889.D  
 Acq: 24 May 2019 16:10

Tgt Ion	Resp	Lower	Upper
113	100		
111	101.7	82.8	124.2
192	21.5	17.0	25.6

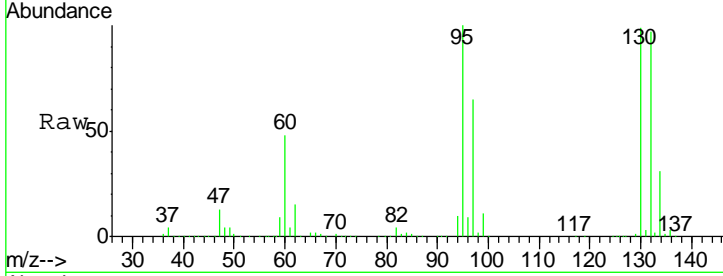




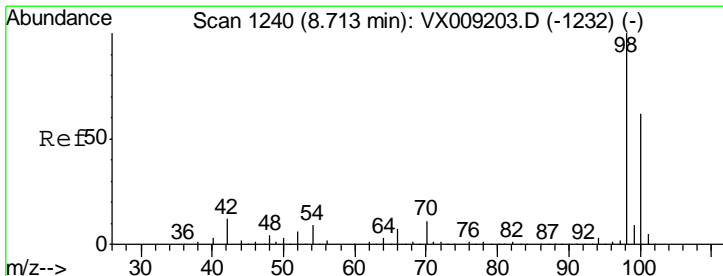
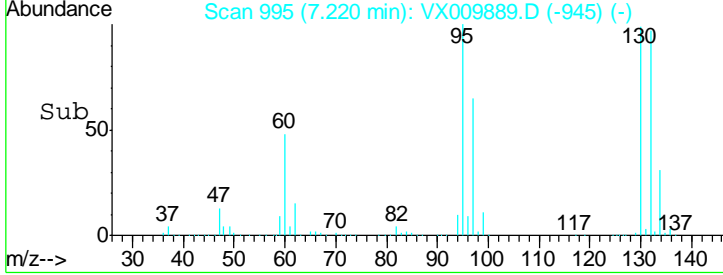
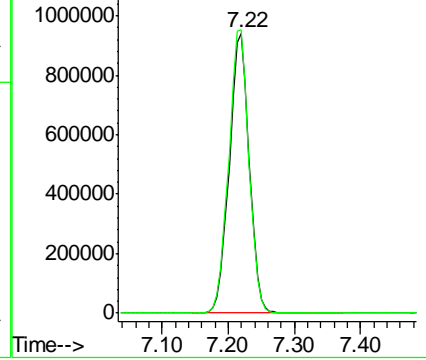
#44  
 Trichloroethene  
 Concen: 990.288 ug/l  
 RT: 7.22 min Scan# 995  
 Delta R.T. 0.01 min  
 Lab File: VX009889.D  
 Acq: 24 May 2019 16:10

Instrument :  
 MSVOA\_X  
 ClientSampled :  
 S32-0657

Tgt Ion: 130 Resp: 1970136  
 Ion Ratio Lower Upper  
 130 100  
 95 101.2 0.0 199.2

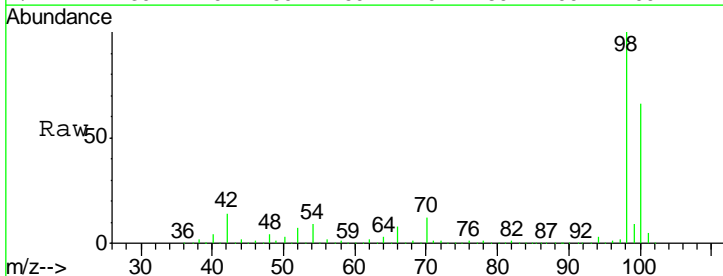


Abundance Ion 129.80 (129.50 to 130.50): V  
 Ion 94.90 (94.60 to 95.60): VX0

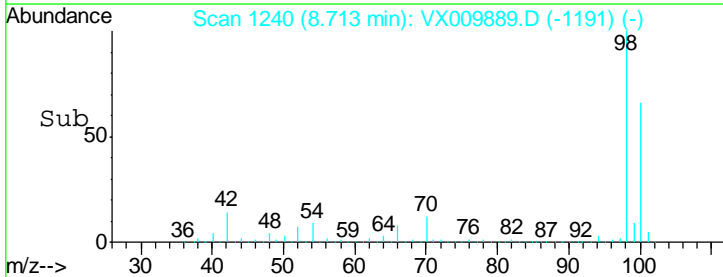
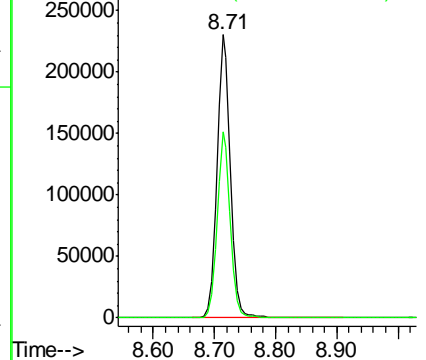


#50  
 Toluene-d8  
 Concen: 49.900 ug/l  
 RT: 8.71 min Scan# 1240  
 Delta R.T. -0.00 min  
 Lab File: VX009889.D  
 Acq: 24 May 2019 16:10

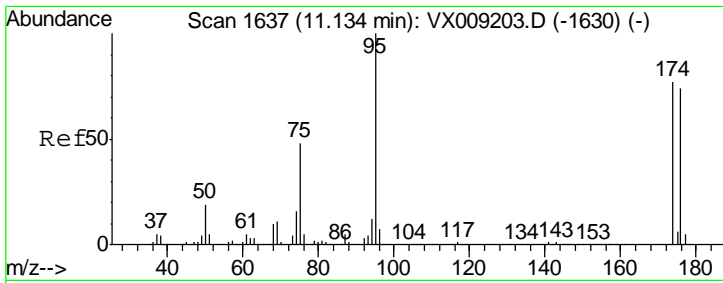
Tgt Ion: 98 Resp: 362374  
 Ion Ratio Lower Upper  
 98 100  
 100 64.5 51.2 76.8



Abundance Ion 98.00 (97.70 to 98.70): VX0  
 Ion 100.00 (99.70 to 100.70): V



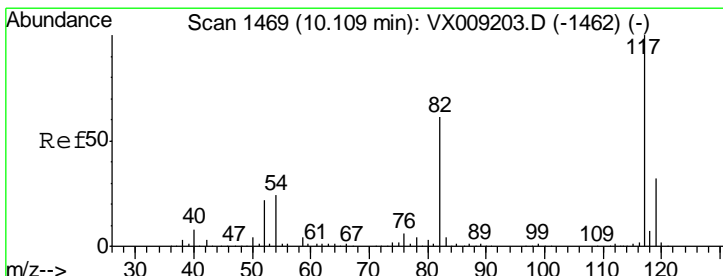
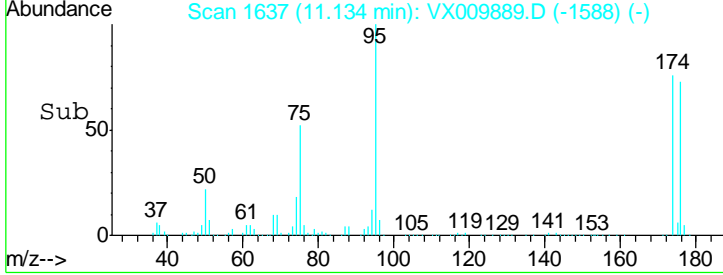
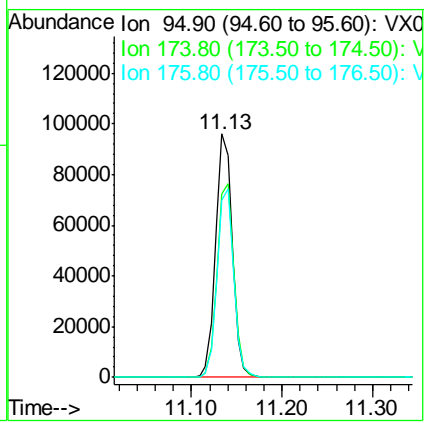
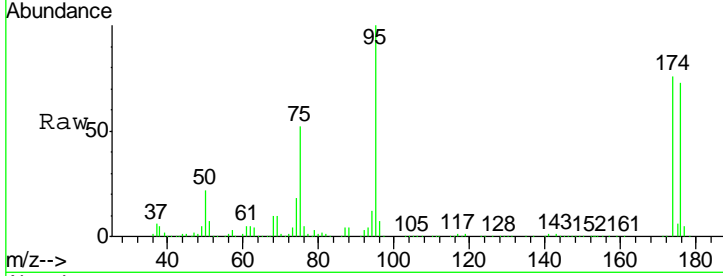




#62  
 4-Bromofluorobenzene  
 Concen: 46.831 ug/l  
 RT: 11.13 min Scan# 1637  
 Delta R.T. -0.00 min  
 Lab File: VX009889.D  
 Acq: 24 May 2019 16:10

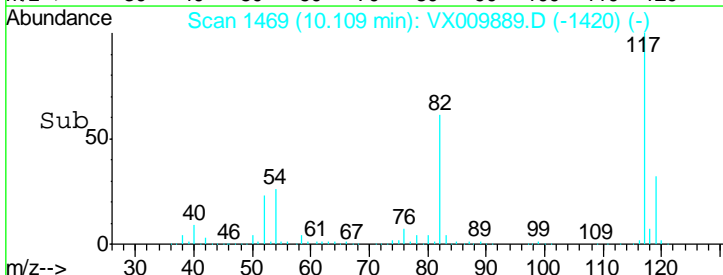
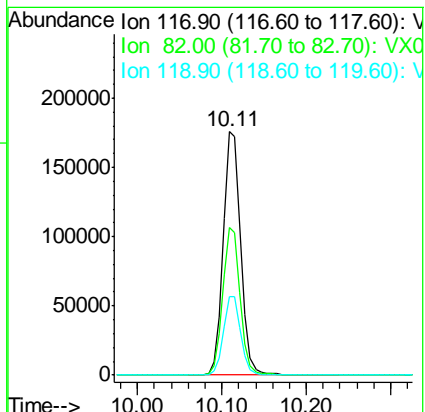
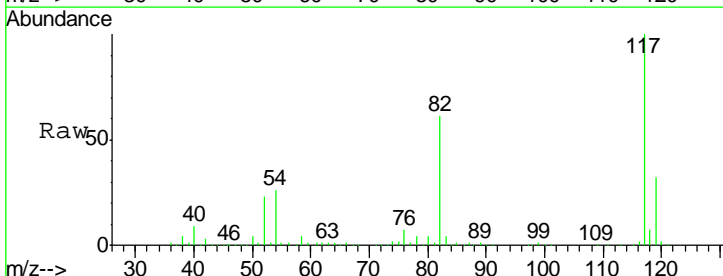
Instrument : MSVOA\_X  
 ClientSampled : S32-0657

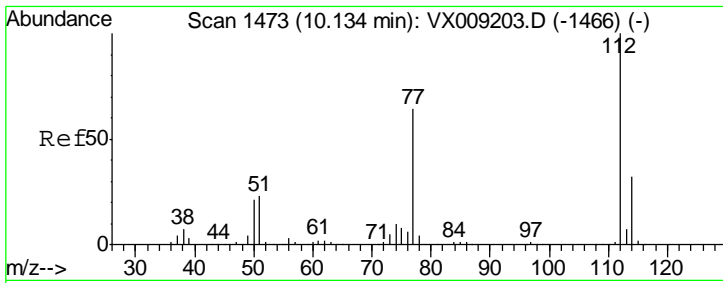
Tgt Ion	Resp	Lower	Upper
95	123573		
174	80.2	0.0	161.6
176	77.1	0.0	159.2



#63  
 Chlorobenzene-d5  
 Concen: 50.000 ug/l  
 RT: 10.11 min Scan# 1469  
 Delta R.T. -0.00 min  
 Lab File: VX009889.D  
 Acq: 24 May 2019 16:10

Tgt Ion	Resp	Lower	Upper
117	252853		
82	60.9	48.8	73.2
119	32.4	25.8	38.6

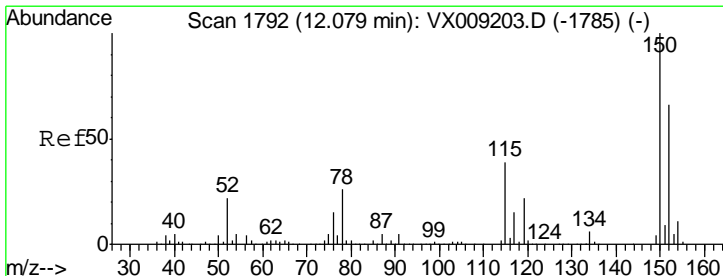
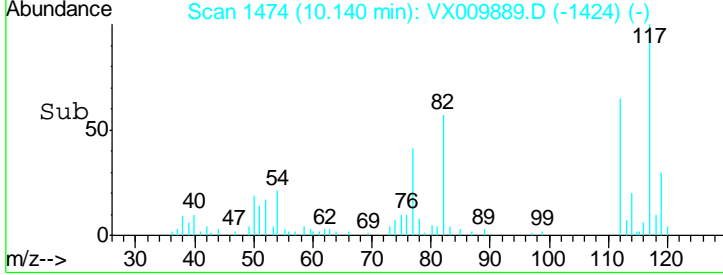
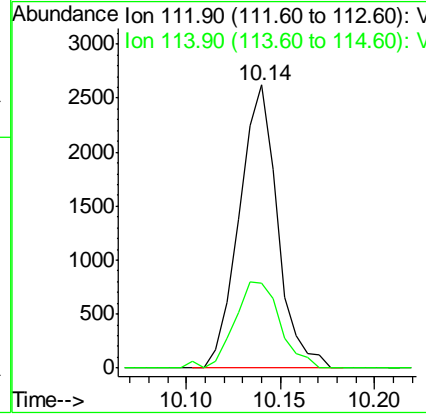
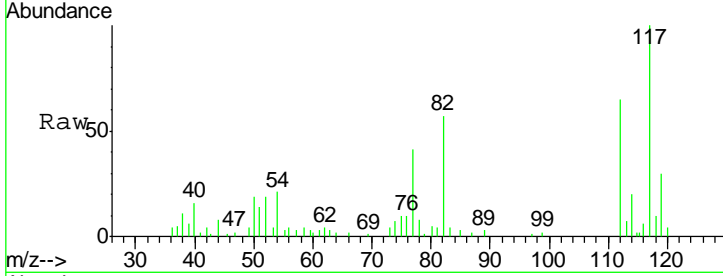




#65  
 Chlorobenzene  
 Concen: 0.728 ug/l  
 RT: 10.14 min Scan# 1474  
 Delta R.T. 0.01 min  
 Lab File: VX009889.D  
 Acq: 24 May 2019 16:10

Instrument : MSVOA\_X  
 ClientSampled : S32-0657

Tgt Ion	Resp	Lower	Upper
112	3683		
114	30.1	25.5	38.3



#72  
 1,4-Dichlorobenzene-d4  
 Concen: 50.000 ug/l  
 RT: 12.08 min Scan# 1792  
 Delta R.T. -0.00 min  
 Lab File: VX009889.D  
 Acq: 24 May 2019 16:10

Tgt Ion	Resp	Lower	Upper
152	110127		
115	59.4	41.2	123.6
150	159.6	0.0	346.4

