

Data Path : Z:\voasrv\HPCHEM1\MSVOA\_X\Data\VX052521\  
 Data File : VX022167.D  
 Acq On : 25 May 2021 11:20  
 Operator : JC/MD  
 Sample : VX0525WBL01  
 Misc : 5.0mL/MSVOA\_X/WATER  
 ALS Vial : 4 Sample Multiplier: 1

Instrument :  
 MSVOA\_X  
 ClientSampleId :  
 VX0525WBL01

Quant Time: May 26 01:53:51 2021  
 Quant Method : Z:\voasrv\HPCHEM1\MSVOA\_X\Method\82X051921W.M  
 Quant Title : SW846 8260  
 QLast Update : Wed May 19 14:23:10 2021  
 Response via : Initial Calibration

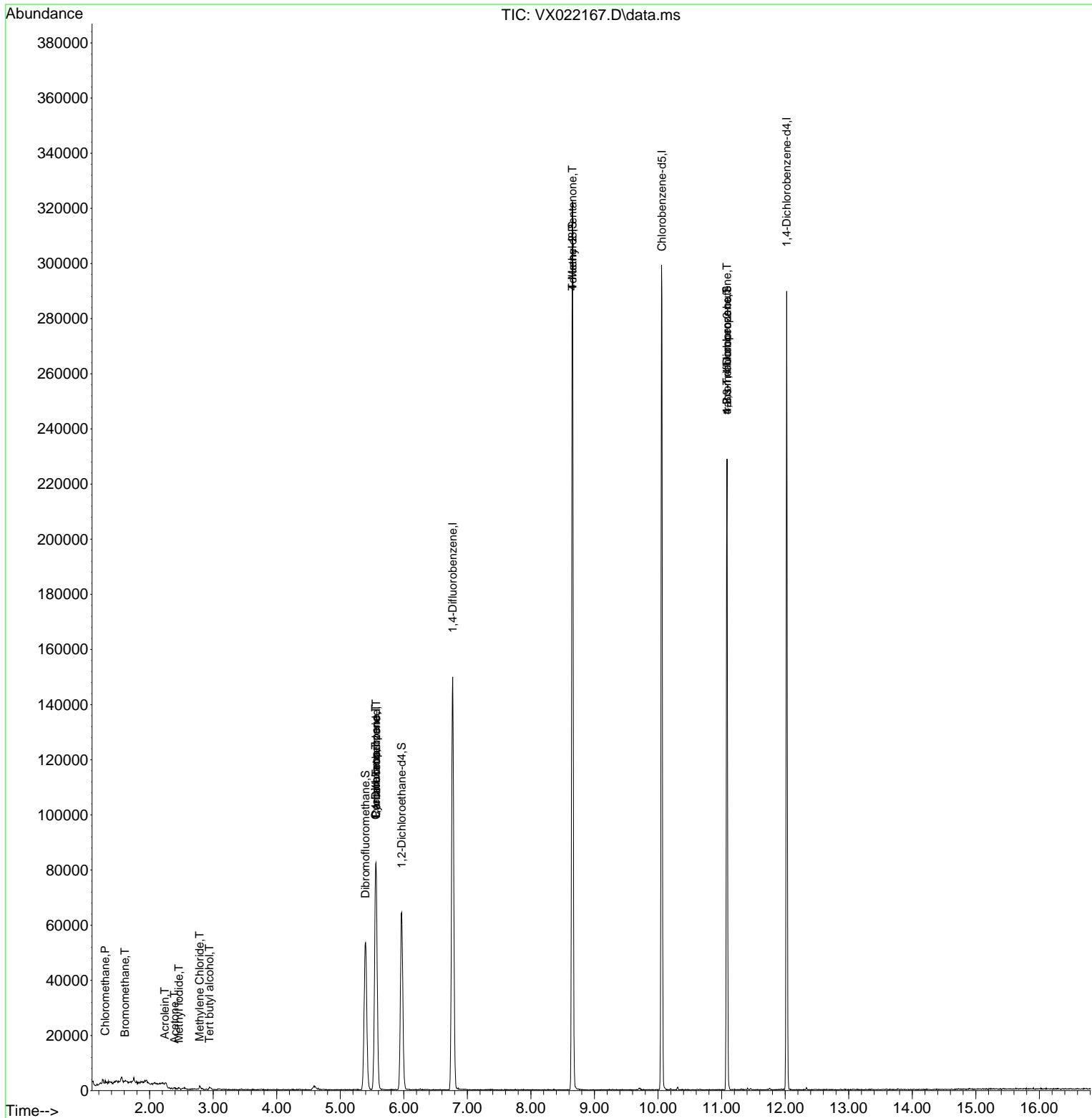
Compound	R.T.	QIon	Response	Conc	Units	Dev(Min)
-----						
Internal Standards						
1) Pentafluorobenzene	5.562	168	73614	50.00	ug/l	0.00
34) 1,4-Difluorobenzene	6.769	114	151327	50.00	ug/l	0.00
63) Chlorobenzene-d5	10.061	117	132877	50.00	ug/l	0.00
72) 1,4-Dichlorobenzene-d4	12.024	152	51643	50.00	ug/l	0.00
System Monitoring Compounds						
33) 1,2-Dichloroethane-d4	5.964	65	60009	52.85	ug/l	0.00
Spiked Amount	50.000	Range	78 - 117	Recovery	=	105.70%
35) Dibromofluoromethane	5.397	113	47238	49.22	ug/l	0.00
Spiked Amount	50.000	Range	75 - 124	Recovery	=	98.44%
50) Toluene-d8	8.653	98	184508	49.91	ug/l	0.00
Spiked Amount	50.000	Range	92 - 112	Recovery	=	99.82%
62) 4-Bromofluorobenzene	11.085	95	63260	46.30	ug/l	0.00
Spiked Amount	50.000	Range	83 - 123	Recovery	=	92.60%
Target Compounds						
						Qvalue
3) Chloromethane	1.301	50	242	0.25	ug/l	99
5) Bromomethane	1.612	94	259	0.43	ug/l #	54
10) Methyl Iodide	2.459	142	428	0.46	ug/l #	75
11) Tert butyl alcohol	2.941	59	610	2.35	ug/l #	73
13) Acrolein	2.239	56	75	0.44	ug/l #	1
16) Acetone	2.392	43	584	1.18	ug/l #	40
20) Methylene Chloride	2.788	84	507	0.46	ug/l #	80
31) Cyclohexane	5.556	56	2188	1.53	ug/l #	1
36) 1,1-Dichloropropene	5.556	75	6668	4.77	ug/l #	49
38) Carbon Tetrachloride	5.562	117	8255	6.03	ug/l #	15
51) 4-Methyl-2-Pentanone	8.653	43	923	0.55	ug/l #	1
76) 1,2,3-Trichloropropane	11.085	75	32860	25.79	ug/l #	39
81) trans-1,4-Dichloro-2-b...	11.085	75	32860	61.11	ug/l #	12
-----						

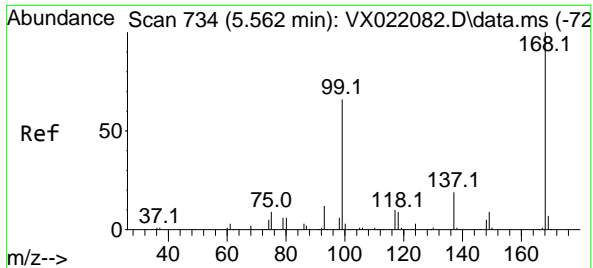
(#) = qualifier out of range (m) = manual integration (+) = signals summed

Data Path : Z:\voasrv\HPCHEM1\MSVOA\_X\Data\VX052521\  
 Data File : VX022167.D  
 Acq On : 25 May 2021 11:20  
 Operator : JC/MD  
 Sample : VX0525WBL01  
 Misc : 5.0mL/MSVOA\_X/WATER  
 ALS Vial : 4 Sample Multiplier: 1

**Instrument :**  
 MSVOA\_X  
**Client Sampled :**  
 VX0525WBL01

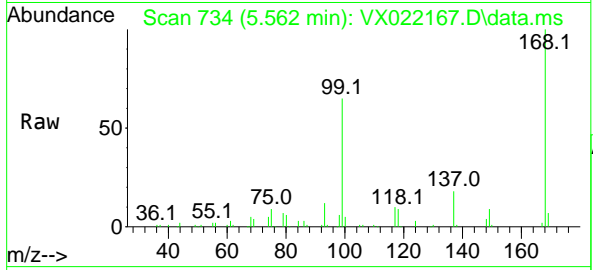
Quant Time: May 26 01:53:51 2021  
 Quant Method : Z:\voasrv\HPCHEM1\MSVOA\_X\Method\82X051921W.M  
 Quant Title : SW846 8260  
 QLast Update : Wed May 19 14:23:10 2021  
 Response via : Initial Calibration



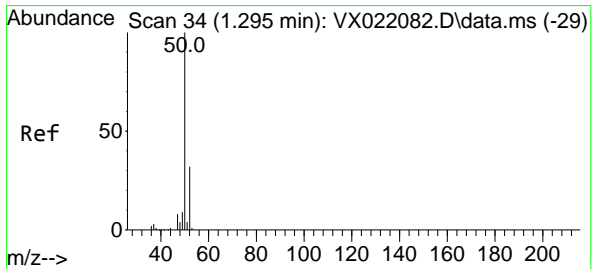
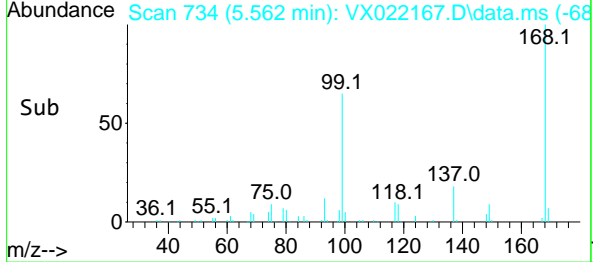
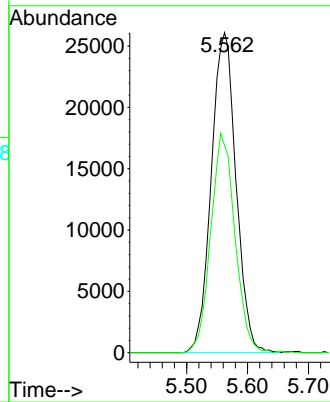


#1  
 Pentafluorobenzene  
 Concen: 50.00 ug/l  
 RT: 5.562 min Scan# 734  
 Delta R.T. 0.000 min  
 Lab File: VX022167.D  
 Acq: 25 May 2021 11:20

Instrument :  
 MSVOA\_X  
 ClientSampled :  
 VX0525WBL01

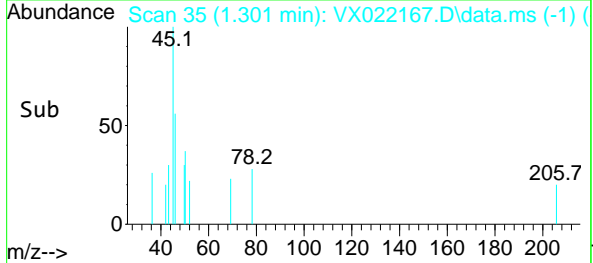
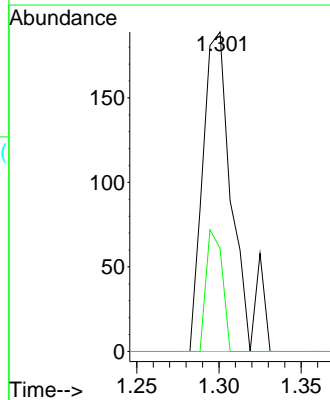
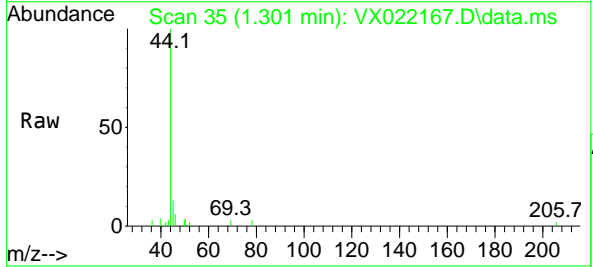


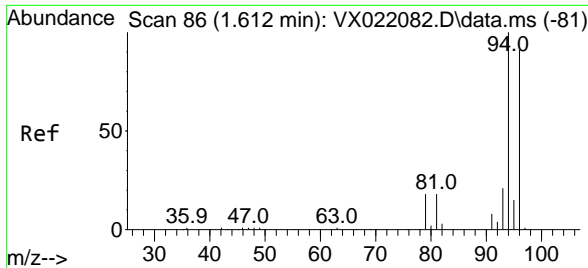
Tgt Ion:168 Resp: 73614  
 Ion Ratio Lower Upper  
 168 100  
 99 64.8 45.8 68.6



#3  
 Chloromethane  
 Concen: 0.25 ug/l  
 RT: 1.301 min Scan# 35  
 Delta R.T. 0.006 min  
 Lab File: VX022167.D  
 Acq: 25 May 2021 11:20

Tgt Ion: 50 Resp: 242  
 Ion Ratio Lower Upper  
 50 100  
 52 32.3 26.4 39.6

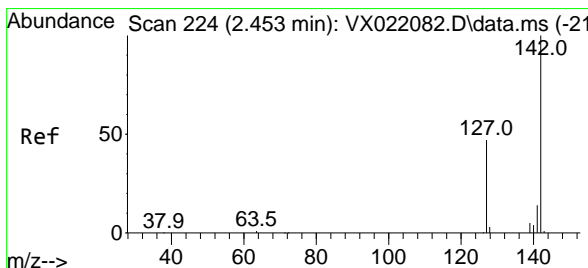
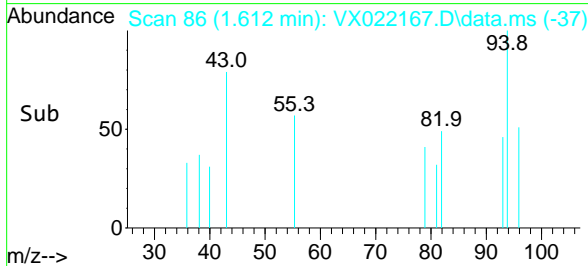
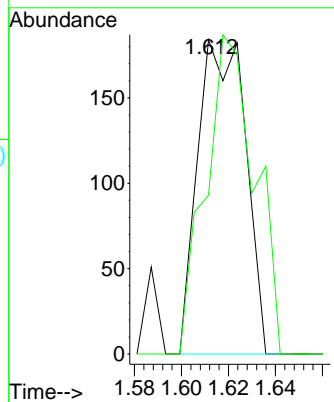
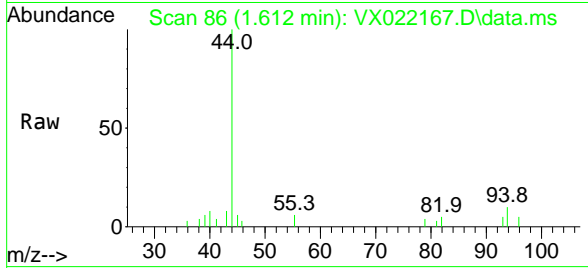




#5  
 Bromomethane  
 Concen: 0.43 ug/l  
 RT: 1.612 min Scan# 86  
 Delta R.T. -0.000 min  
 Lab File: VX022167.D  
 Acq: 25 May 2021 11:20

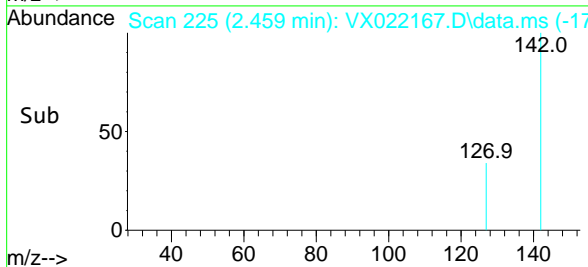
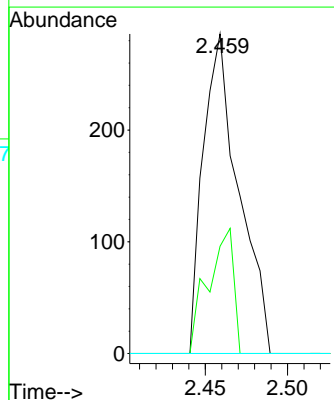
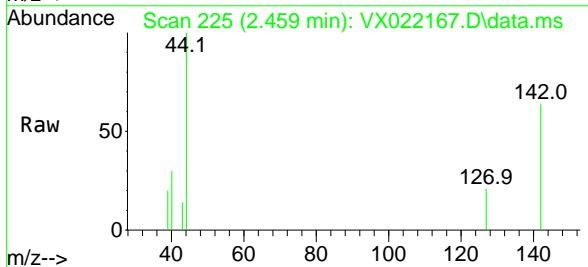
Instrument :  
 MSVOA\_X  
 ClientSampled :  
 VX0525WBL01

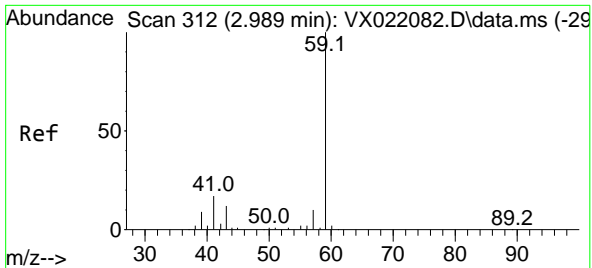
Tgt Ion: 94 Resp: 259  
 Ion Ratio Lower Upper  
 94 100  
 96 50.5 76.4 114.6#



#10  
 Methyl Iodide  
 Concen: 0.46 ug/l  
 RT: 2.459 min Scan# 225  
 Delta R.T. 0.006 min  
 Lab File: VX022167.D  
 Acq: 25 May 2021 11:20

Tgt Ion: 142 Resp: 428  
 Ion Ratio Lower Upper  
 142 100  
 127 28.3 33.3 49.9#  
 141 0.0 11.4 17.0#

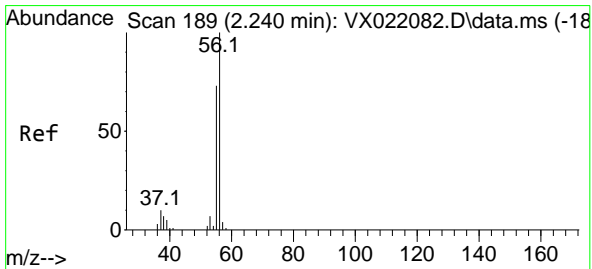
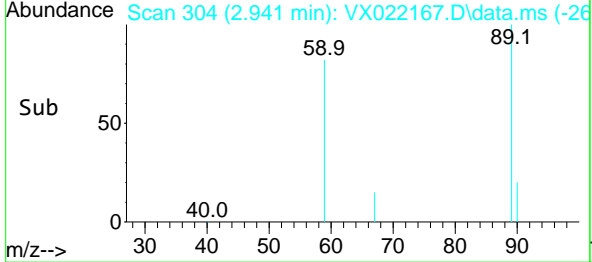
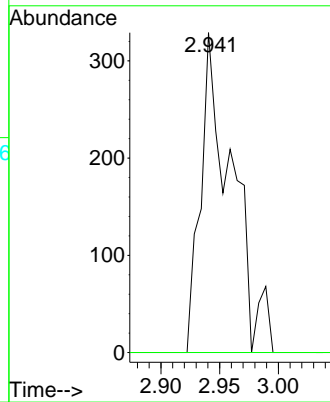
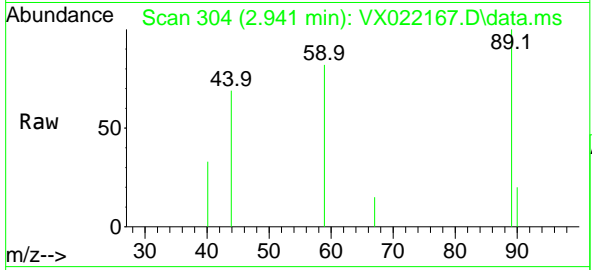




#11  
 Tert butyl alcohol  
 Concen: 2.35 ug/l  
 RT: 2.941 min Scan# 304  
 Delta R.T. -0.048 min  
 Lab File: VX022167.D  
 Acq: 25 May 2021 11:20

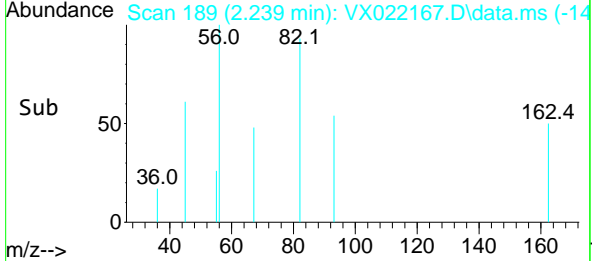
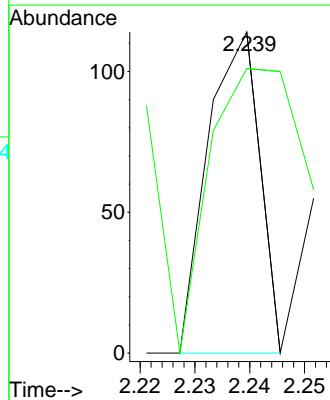
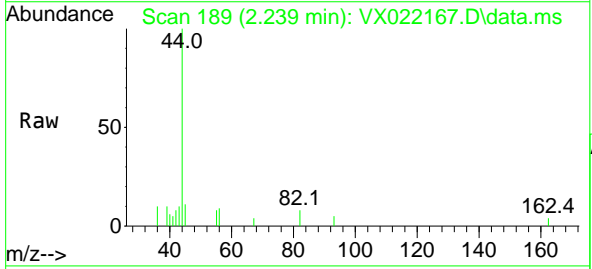
Instrument :  
 MSVOA\_X  
 ClientSampled :  
 VX0525WBL01

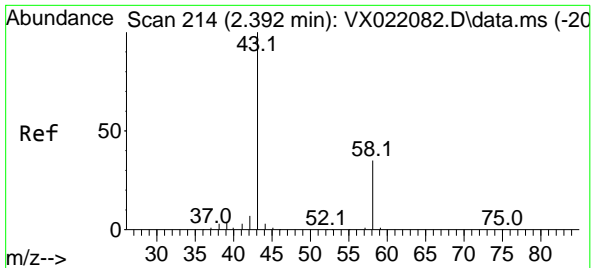
Tgt Ion: 59 Resp: 610  
 Ion Ratio Lower Upper  
 59 100  
 57 0.0 7.8 11.8#



#13  
 Acrolein  
 Concen: 0.44 ug/l  
 RT: 2.239 min Scan# 189  
 Delta R.T. -0.001 min  
 Lab File: VX022167.D  
 Acq: 25 May 2021 11:20

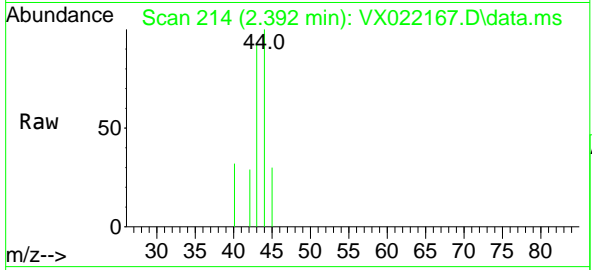
Tgt Ion: 56 Resp: 75  
 Ion Ratio Lower Upper  
 56 100  
 55 192.0 56.4 84.6#





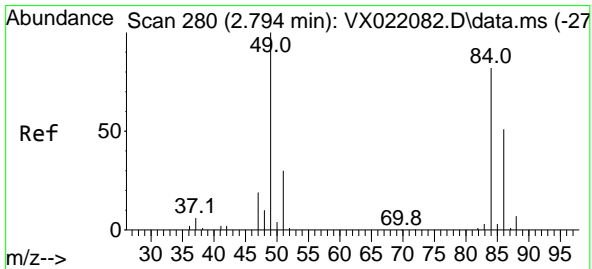
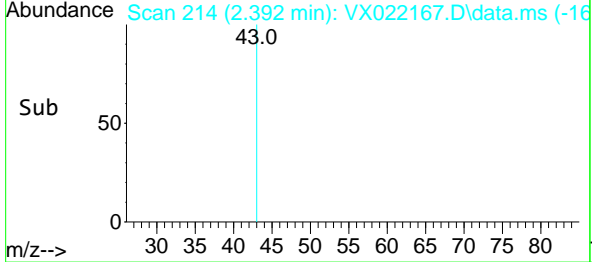
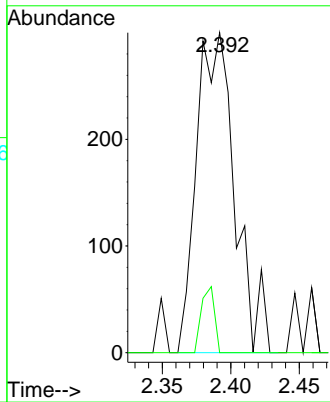
#16  
 Acetone  
 Concen: 1.18 ug/l  
 RT: 2.392 min Scan# 214  
 Delta R.T. -0.000 min  
 Lab File: VX022167.D  
 Acq: 25 May 2021 11:20

Instrument :  
 MSVOA\_X  
 ClientSampled :  
 VX0525WBL01

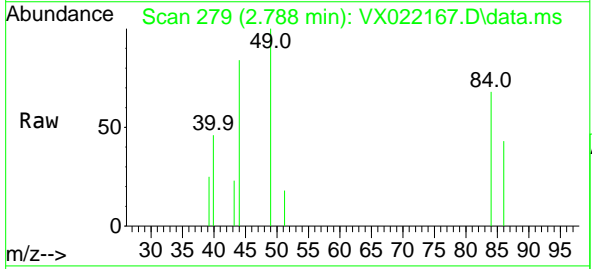


Tgt Ion: 43 Resp: 584

Ion	Ratio	Lower	Upper
43	100		
58	0.0	27.8	41.8#

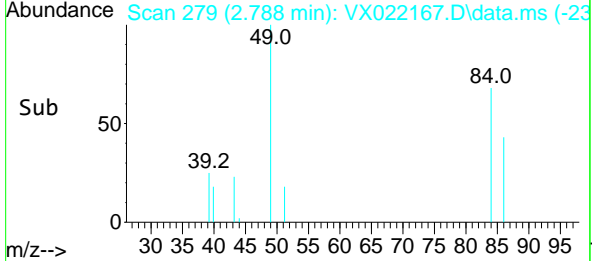
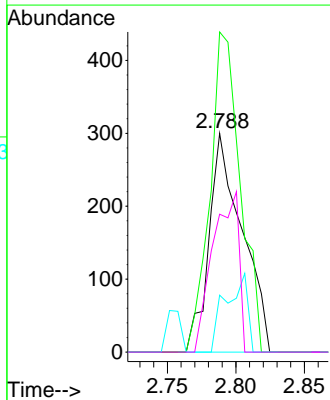


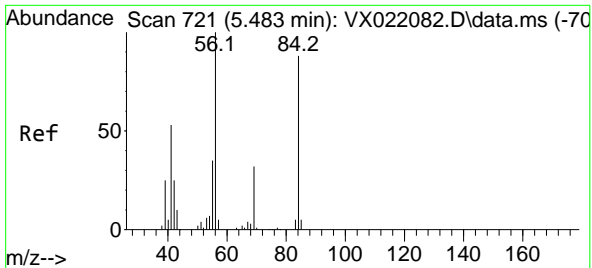
#20  
 Methylene Chloride  
 Concen: 0.46 ug/l  
 RT: 2.788 min Scan# 279  
 Delta R.T. -0.006 min  
 Lab File: VX022167.D  
 Acq: 25 May 2021 11:20



Tgt Ion: 84 Resp: 507

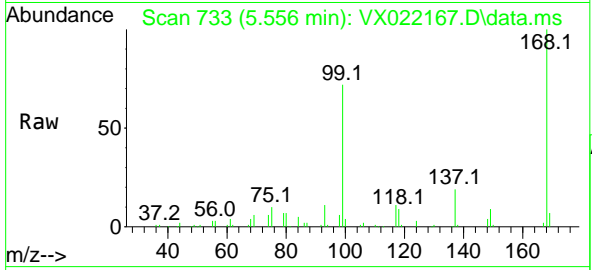
Ion	Ratio	Lower	Upper
84	100		
49	146.3	88.6	132.8#
51	26.0	27.0	40.6#
86	63.0	50.3	75.5





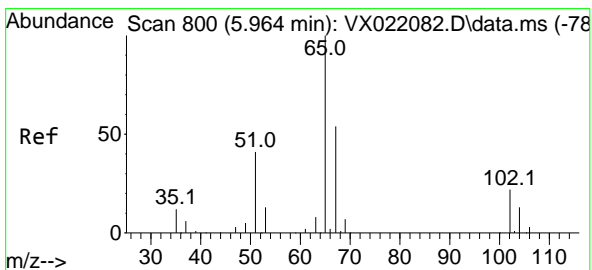
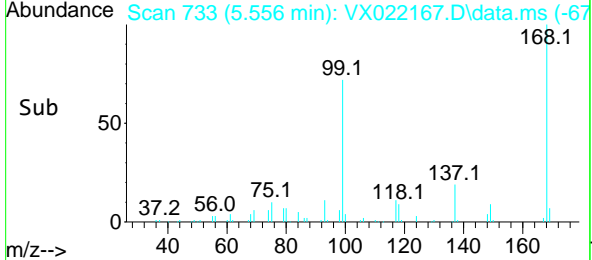
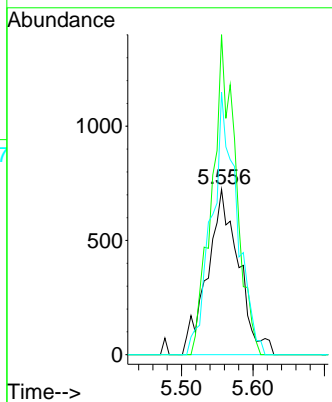
#31  
 Cyclohexane  
 Concen: 1.53 ug/l  
 RT: 5.556 min Scan# 733  
 Delta R.T. 0.073 min  
 Lab File: VX022167.D  
 Acq: 25 May 2021 11:20

Instrument :  
 MSVOA\_X  
 ClientSampled :  
 VX0525WBL01

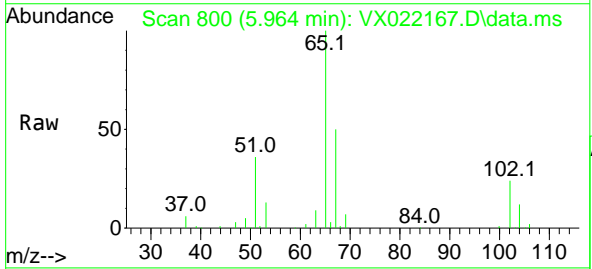


Tgt Ion: 56 Resp: 2188

Ion	Ratio	Lower	Upper
56	100		
69	193.5	25.3	37.9#
84	158.6	71.4	107.0#

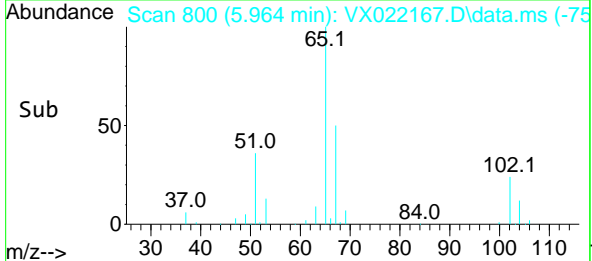
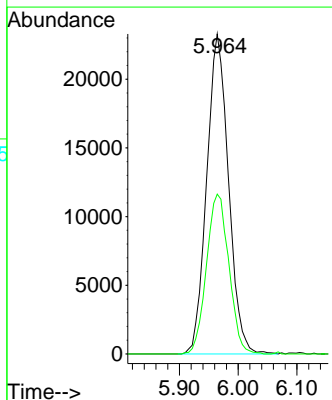


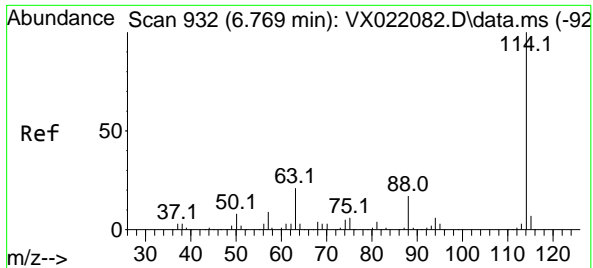
#33  
 1,2-Dichloroethane-d4  
 Concen: 52.85 ug/l  
 RT: 5.964 min Scan# 800  
 Delta R.T. 0.000 min  
 Lab File: VX022167.D  
 Acq: 25 May 2021 11:20



Tgt Ion: 65 Resp: 60009

Ion	Ratio	Lower	Upper
65	100		
67	51.3	0.0	105.4

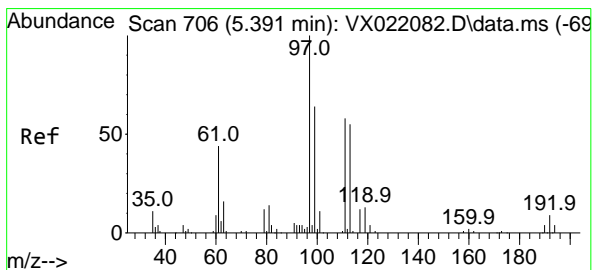
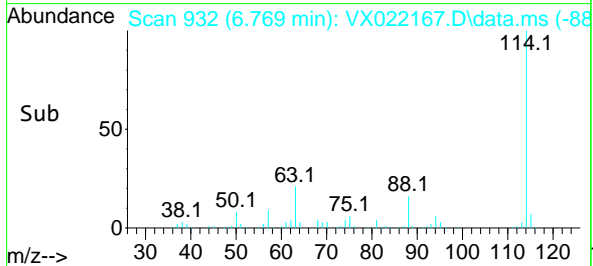
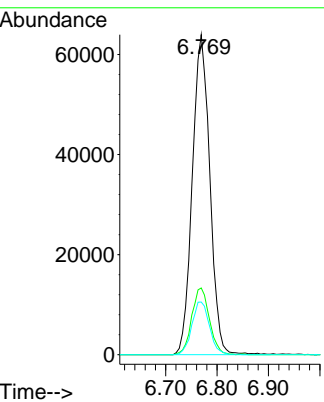
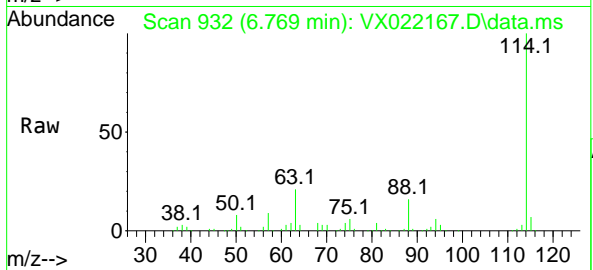




#34  
 1,4-Difluorobenzene  
 Concen: 50.00 ug/l  
 RT: 6.769 min Scan# 932  
 Delta R.T. 0.000 min  
 Lab File: VX022167.D  
 Acq: 25 May 2021 11:20

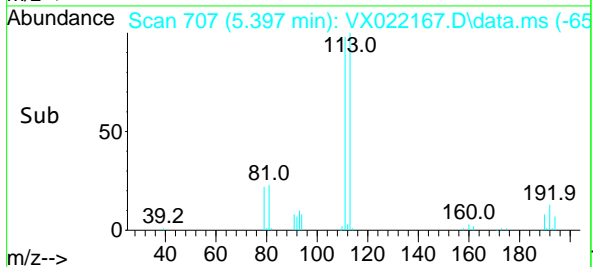
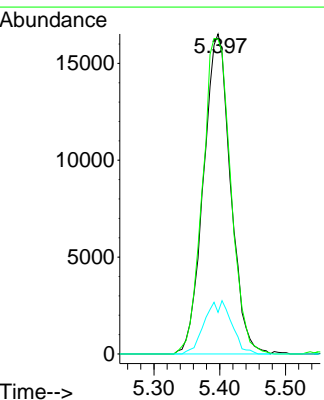
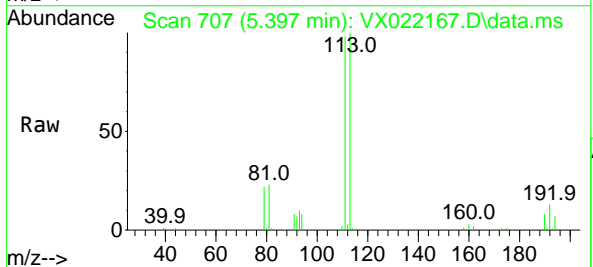
Instrument :  
 MSVOA\_X  
 ClientSampled :  
 VX0525WBL01

Tgt Ion	Resp	Lower	Upper
114	151327		
63	20.9	0.0	40.8
88	16.4	0.0	32.8

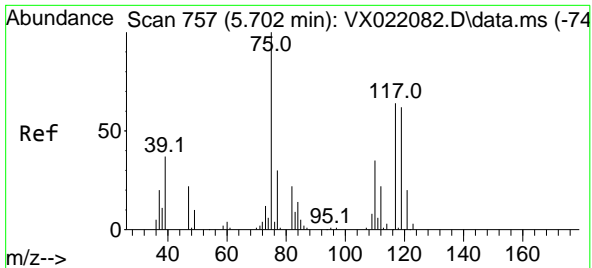


#35  
 Dibromofluoromethane  
 Concen: 49.22 ug/l  
 RT: 5.397 min Scan# 707  
 Delta R.T. 0.006 min  
 Lab File: VX022167.D  
 Acq: 25 May 2021 11:20

Tgt Ion	Resp	Lower	Upper
113	47238		
111	102.7	81.9	122.9
192	16.7	16.7	25.1



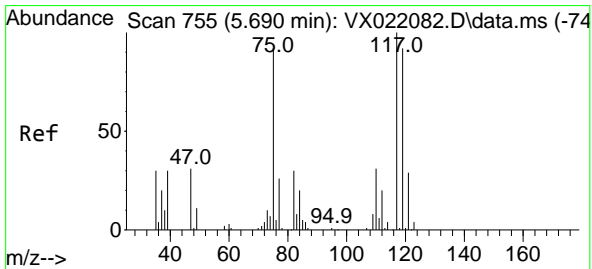
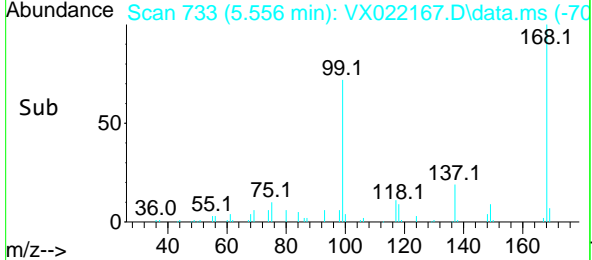
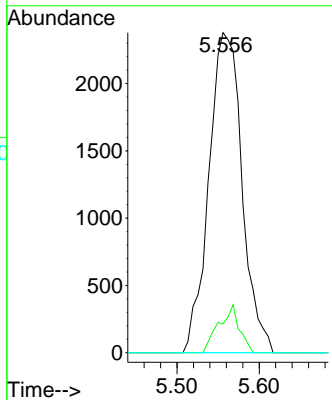
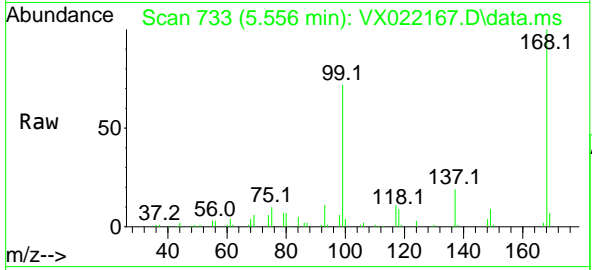




#36  
 1,1-Dichloropropene  
 Concen: 4.77 ug/l  
 RT: 5.556 min Scan# 733  
 Delta R.T. -0.146 min  
 Lab File: VX022167.D  
 Acq: 25 May 2021 11:20

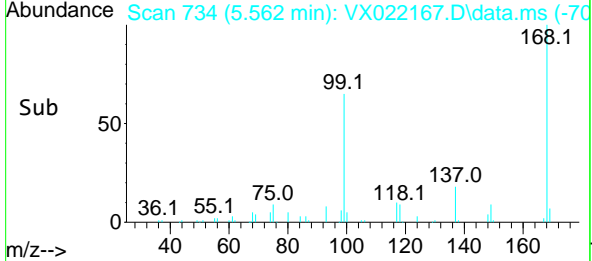
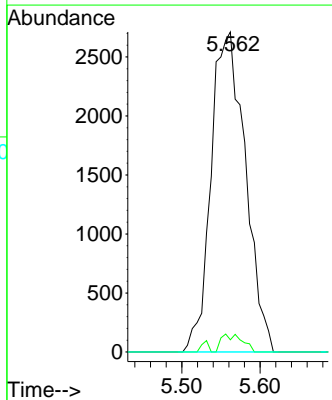
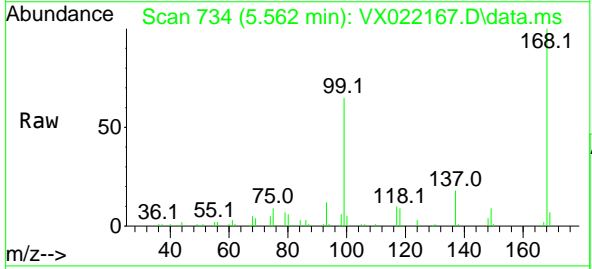
Instrument :  
 MSVOA\_X  
 ClientSampled :  
 VX0525WBL01

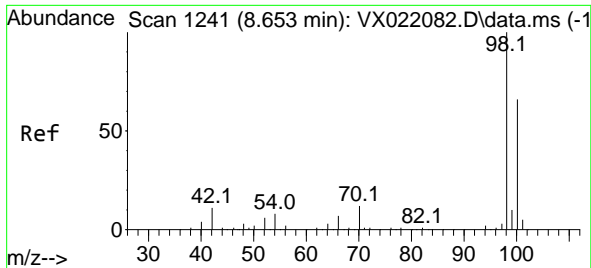
Tgt Ion	Resp	Lower	Upper
75	100		
110	9.2	18.1	54.4#
77	0.0	25.3	37.9#



#38  
 Carbon Tetrachloride  
 Concen: 6.03 ug/l  
 RT: 5.562 min Scan# 734  
 Delta R.T. -0.128 min  
 Lab File: VX022167.D  
 Acq: 25 May 2021 11:20

Tgt Ion	Resp	Lower	Upper
117	100		
119	3.8	76.2	114.2#
121	0.0	24.8	37.2#

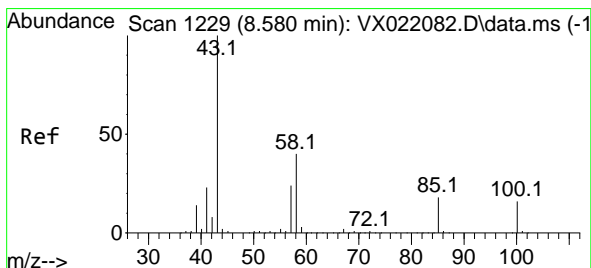
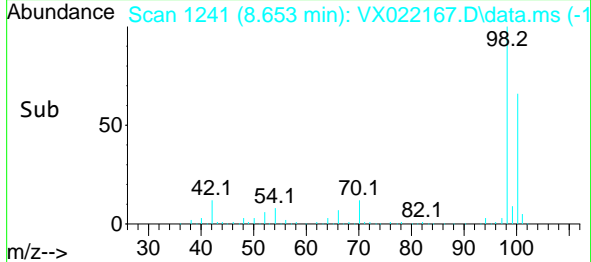
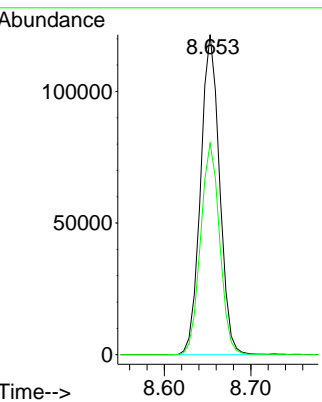
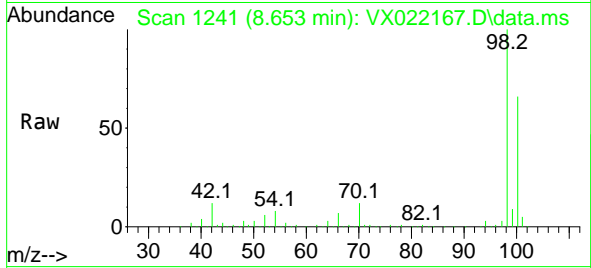




#50  
 Toluene-d8  
 Concen: 49.91 ug/l  
 RT: 8.653 min Scan# 1241  
 Delta R.T. -0.000 min  
 Lab File: VX022167.D  
 Acq: 25 May 2021 11:20

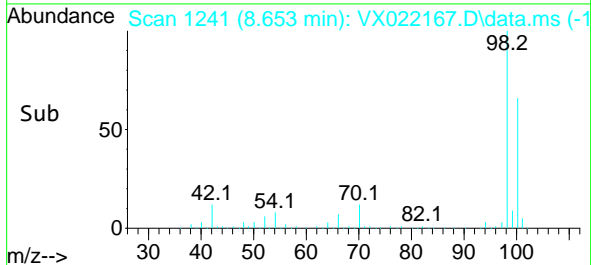
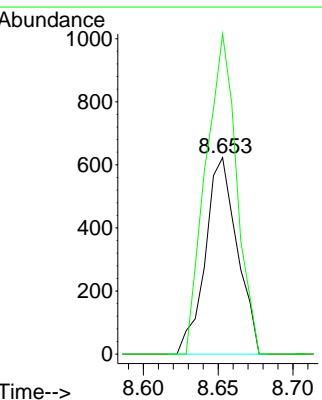
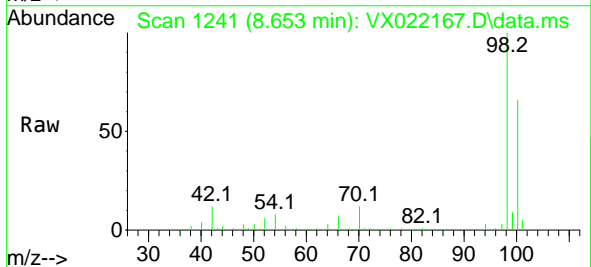
Instrument :  
 MSVOA\_X  
 ClientSampled :  
 VX0525WBL01

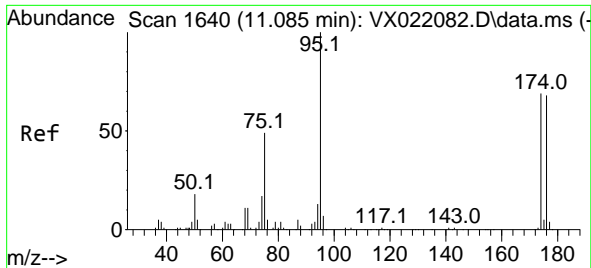
Tgt Ion: 98 Resp: 184508  
 Ion Ratio Lower Upper  
 98 100  
 100 66.6 51.9 77.9



#51  
 4-Methyl-2-Pentanone  
 Concen: 0.55 ug/l  
 RT: 8.653 min Scan# 1241  
 Delta R.T. 0.073 min  
 Lab File: VX022167.D  
 Acq: 25 May 2021 11:20

Tgt Ion: 43 Resp: 923  
 Ion Ratio Lower Upper  
 43 100  
 58 157.9 35.4 53.0#

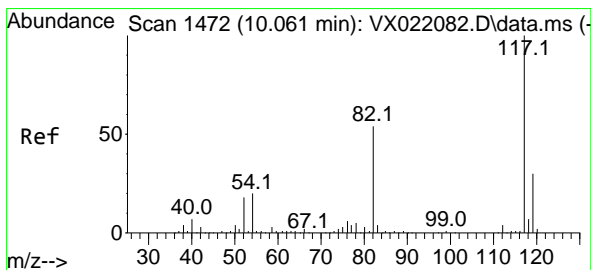
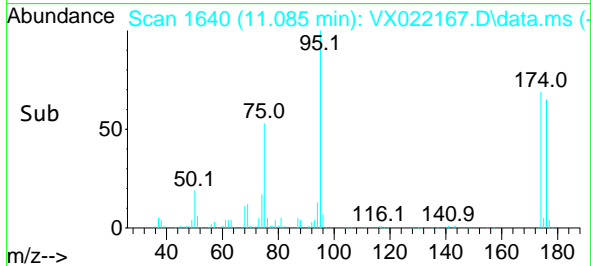
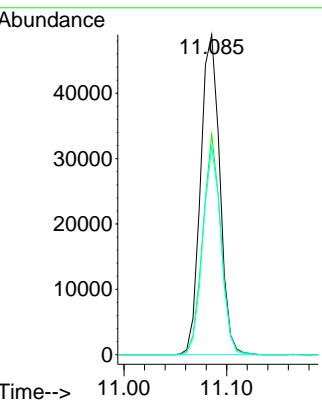
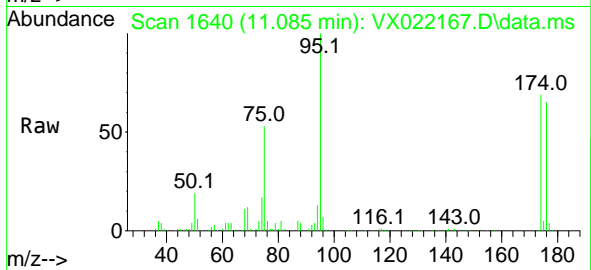




#62  
 4-Bromofluorobenzene  
 Concen: 46.30 ug/l  
 RT: 11.085 min Scan# 1640  
 Delta R.T. 0.000 min  
 Lab File: VX022167.D  
 Acq: 25 May 2021 11:20

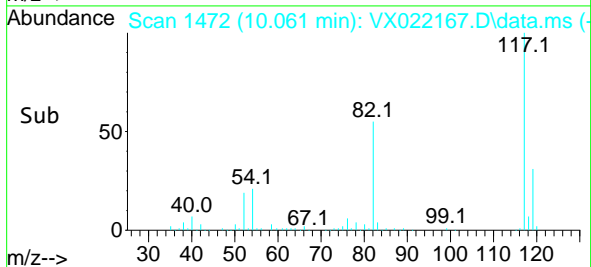
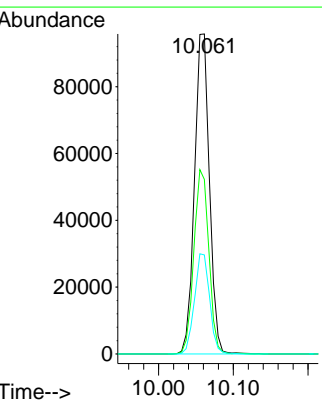
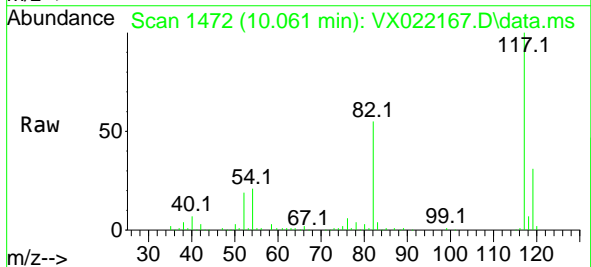
Instrument :  
 MSVOA\_X  
 ClientSampled :  
 VX0525WBL01

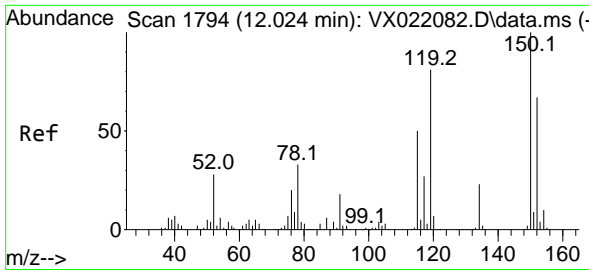
Tgt Ion	Resp	Lower	Upper
95	63260	100	
174	64.8	0.0	154.6
176	61.8	0.0	155.8



#63  
 Chlorobenzene-d5  
 Concen: 50.00 ug/l  
 RT: 10.061 min Scan# 1472  
 Delta R.T. 0.000 min  
 Lab File: VX022167.D  
 Acq: 25 May 2021 11:20

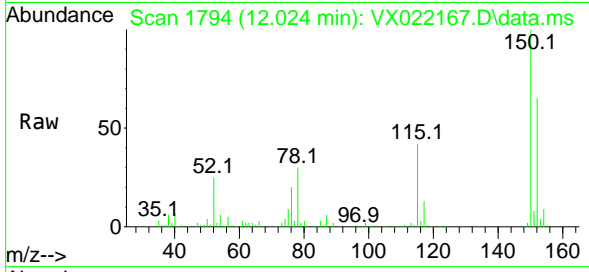
Tgt Ion	Resp	Lower	Upper
117	132877	100	
82	54.6	47.4	71.2
119	30.9	26.6	39.8



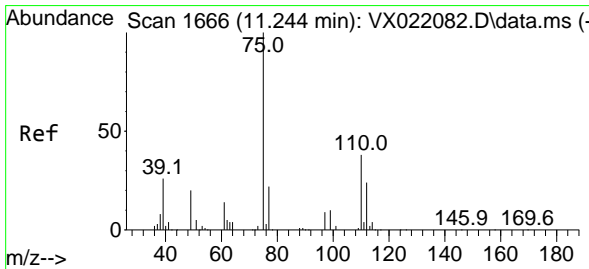
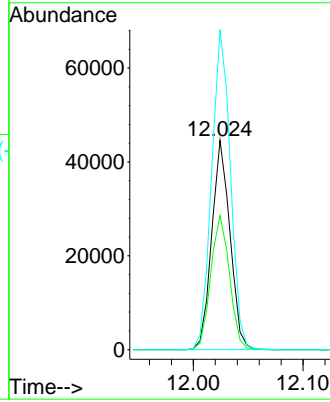
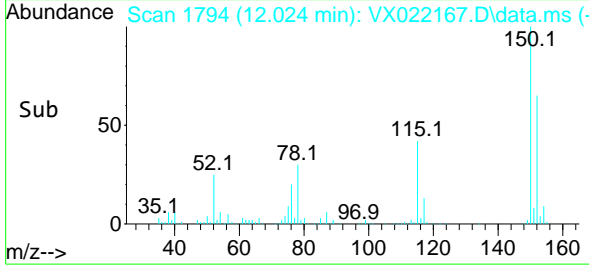


#72  
 1,4-Dichlorobenzene-d4  
 Concen: 50.00 ug/l  
 RT: 12.024 min Scan# 1794  
 Delta R.T. 0.000 min  
 Lab File: VX022167.D  
 Acq: 25 May 2021 11:20

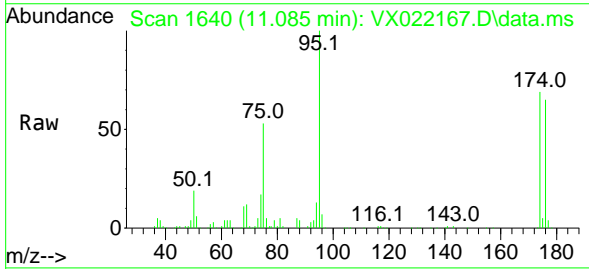
Instrument :  
 MSVOA\_X  
 ClientSampled :  
 VX0525WBL01



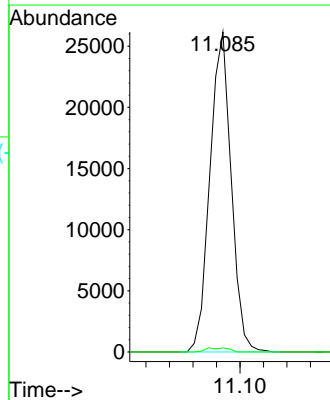
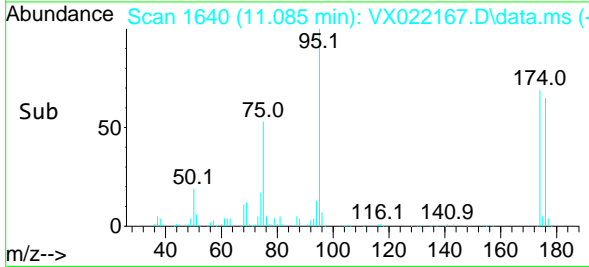
Tgt Ion:152 Resp: 51643  
 Ion Ratio Lower Upper  
 152 100  
 115 65.6 41.1 123.3  
 150 157.2 0.0 349.0

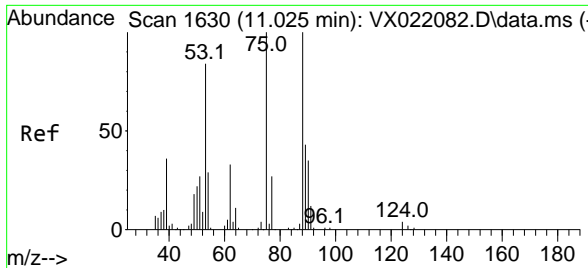


#76  
 1,2,3-Trichloropropane  
 Concen: 25.79 ug/l  
 RT: 11.085 min Scan# 1640  
 Delta R.T. -0.159 min  
 Lab File: VX022167.D  
 Acq: 25 May 2021 11:20



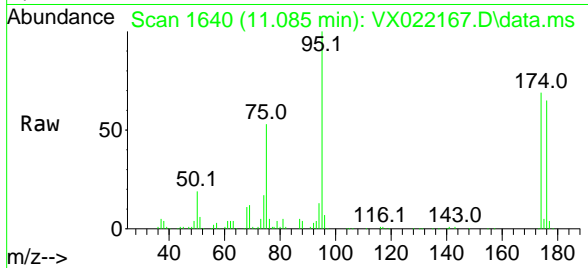
Tgt Ion: 75 Resp: 32860  
 Ion Ratio Lower Upper  
 75 100  
 77 1.4 19.1 57.5#





#81  
 trans-1,4-Dichloro-2-butene  
 Concen: 61.11 ug/l  
 RT: 11.085 min Scan# 1640  
 Delta R.T. 0.060 min  
 Lab File: VX022167.D  
 Acq: 25 May 2021 11:20

Instrument :  
 MSVOA\_X  
 ClientSampled :  
 VX0525WBL01



Tgt Ion: 75 Resp: 32860

Ion	Ratio	Lower	Upper
75	100		
53	0.0	74.5	111.7#
89	0.0	37.9	56.9#

