

Data Path : Z:\voasrv\HPCHEM1\MSVOA_X\Data\VX052622\
 Data File : VX029007.D
 Acq On : 26 May 2022 18:22
 Operator : JC/MD
 Sample : N3053-03 50X
 Misc : 5.0mL/MSVOA_X/WATER
 ALS Vial : 21 Sample Multiplier: 1

Instrument :
 MSVOA_X
 ClientSampleId :
 52322-E

Quant Time: May 27 07:35:50 2022
 Quant Method : Z:\voasrv\HPCHEM1\MSVOA_X\Method\82X051222W.M
 Quant Title : SW846 8260
 QLast Update : Thu May 12 14:58:53 2022
 Response via : Initial Calibration

Compound	R.T.	QIon	Response	Conc	Units	Dev(Min)

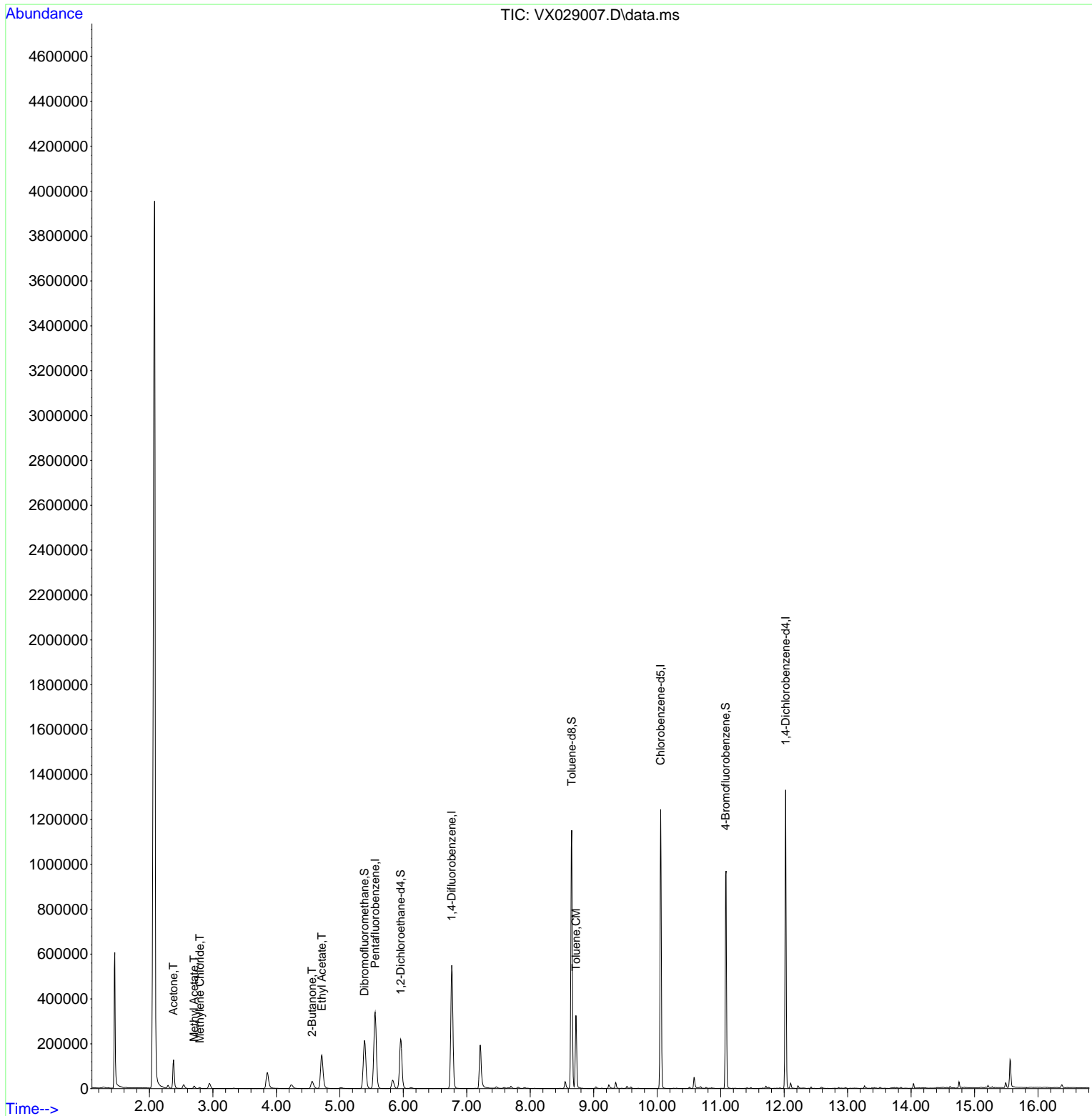
Internal Standards						
1) Pentafluorobenzene	5.556	168	321696	50.000	ug/l	0.00
34) 1,4-Difluorobenzene	6.763	114	573198	50.000	ug/l	0.00
63) Chlorobenzene-d5	10.055	117	563300	50.000	ug/l	0.00
72) 1,4-Dichlorobenzene-d4	12.024	152	267042	50.000	ug/l	0.00
System Monitoring Compounds						
33) 1,2-Dichloroethane-d4	5.958	65	218228	49.488	ug/l	0.00
Spiked Amount	50.000	Range	61 - 141	Recovery	=	98.980%
35) Dibromofluoromethane	5.385	113	191936	51.108	ug/l	0.00
Spiked Amount	50.000	Range	69 - 133	Recovery	=	102.220%
50) Toluene-d8	8.653	98	689466	48.695	ug/l	0.00
Spiked Amount	50.000	Range	65 - 126	Recovery	=	97.380%
62) 4-Bromofluorobenzene	11.079	95	275376	52.071	ug/l	0.00
Spiked Amount	50.000	Range	58 - 135	Recovery	=	104.140%
Target Compounds						
						Qvalue
16) Acetone	2.380	43	130140	68.765	ug/l	95
18) Methyl Acetate	2.703	43	12412	2.619	ug/l	98
20) Methylene Chloride	2.794	84	2146	0.540	ug/l	94
25) 2-Butanone	4.562	43	46182	15.546	ug/l	91
37) Ethyl Acetate	4.715	43	250940	42.593	ug/l	99
52) Toluene	8.720	92	122920	11.787	ug/l	98

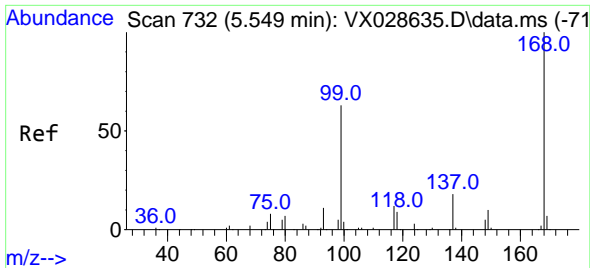
(#) = qualifier out of range (m) = manual integration (+) = signals summed

Data Path : Z:\voasrv\HPCHEM1\MSVOA_X\Data\VX052622\
 Data File : VX029007.D
 Acq On : 26 May 2022 18:22
 Operator : JC/MD
 Sample : N3053-03 50X
 Misc : 5.0mL/MSVOA_X/WATER
 ALS Vial : 21 Sample Multiplier: 1

Instrument :
 MSVOA_X
 ClientSampleId :
 52322-E

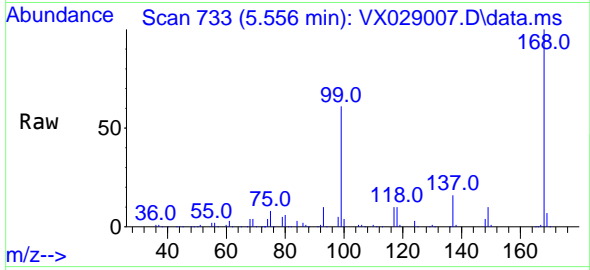
Quant Time: May 27 07:35:50 2022
 Quant Method : Z:\voasrv\HPCHEM1\MSVOA_X\Method\82X051222W.M
 Quant Title : SW846 8260
 QLast Update : Thu May 12 14:58:53 2022
 Response via : Initial Calibration



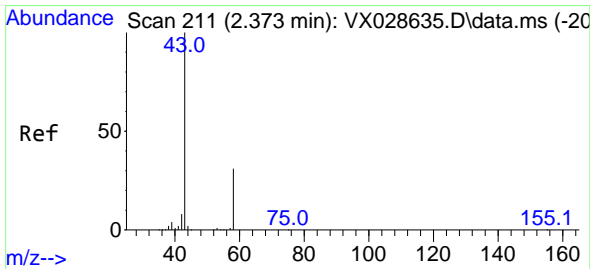
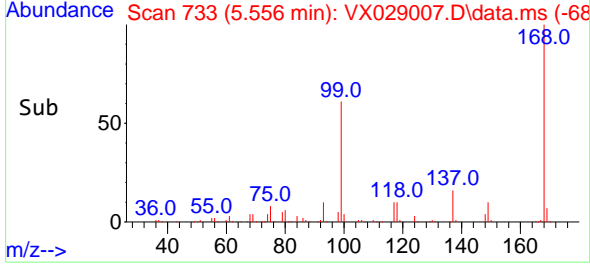
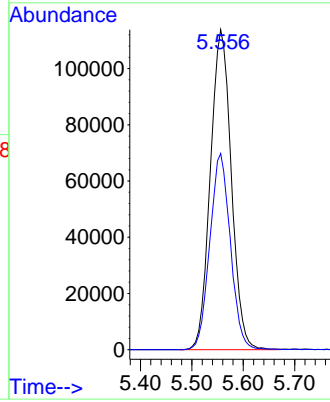


#1
 Pentafluorobenzene
 Concen: 50.000 ug/l
 RT: 5.556 min Scan# 71
 Delta R.T. 0.007 min
 Lab File: VX029007.D
 Acq: 26 May 2022 18:22

Instrument :
 MSVOA_X
 ClientSampleId :
 52322-E

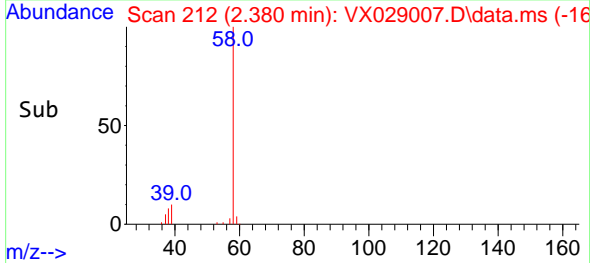
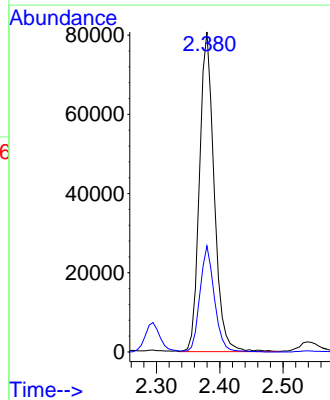
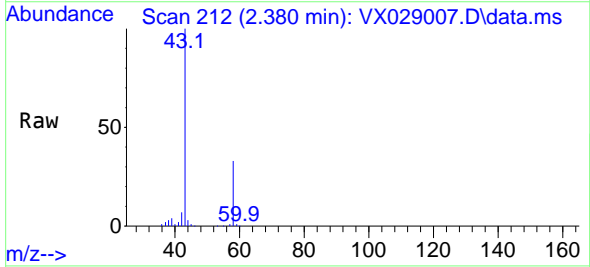


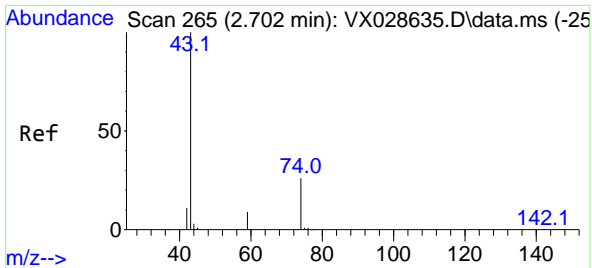
Tgt Ion:168 Resp: 321696
 Ion Ratio Lower Upper
 168 100
 99 61.3 41.7 62.5



#16
 Acetone
 Concen: 68.765 ug/l
 RT: 2.380 min Scan# 212
 Delta R.T. 0.007 min
 Lab File: VX029007.D
 Acq: 26 May 2022 18:22

Tgt Ion: 43 Resp: 130140
 Ion Ratio Lower Upper
 43 100
 58 33.2 28.8 43.2

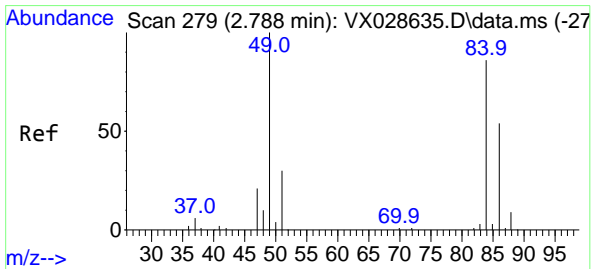
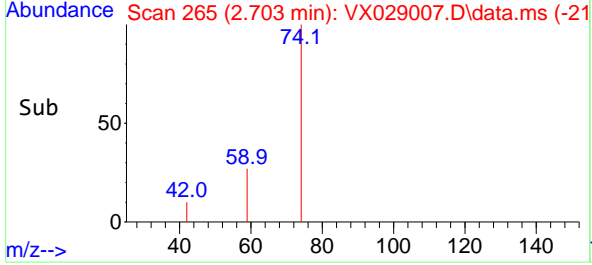
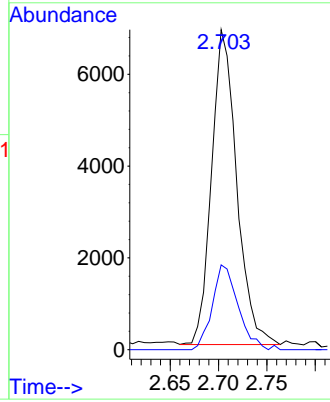
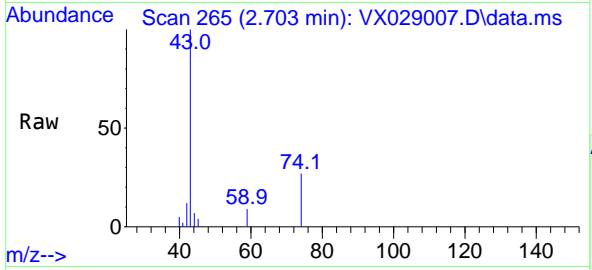




#18
 Methyl Acetate
 Concen: 2.619 ug/l
 RT: 2.703 min Scan# 20
 Delta R.T. 0.001 min
 Lab File: VX029007.D
 Acq: 26 May 2022 18:22

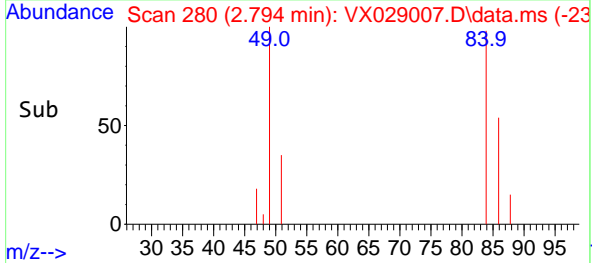
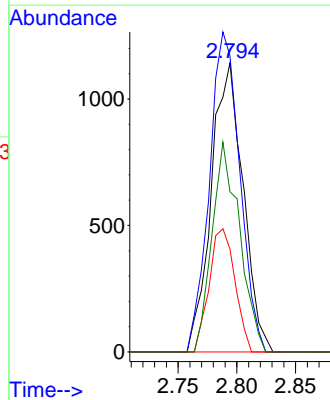
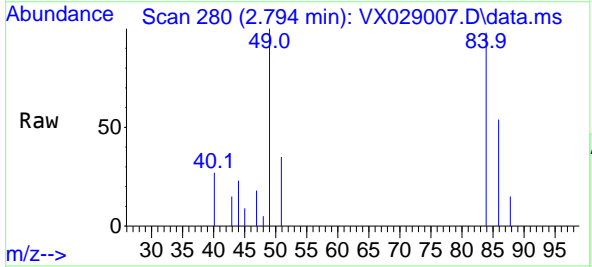
Instrument : MSVOA_X
 ClientSampleId : 52322-E

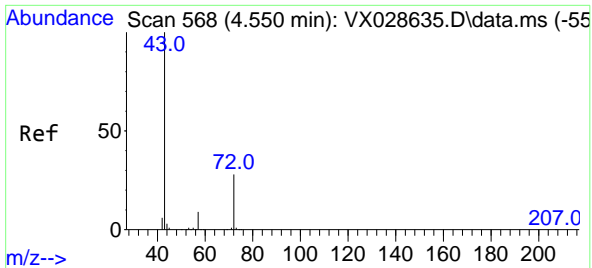
Tgt Ion: 43 Resp: 12412
 Ion Ratio Lower Upper
 43 100
 74 27.4 22.8 34.2



#20
 Methylene Chloride
 Concen: 0.540 ug/l
 RT: 2.794 min Scan# 280
 Delta R.T. 0.006 min
 Lab File: VX029007.D
 Acq: 26 May 2022 18:22

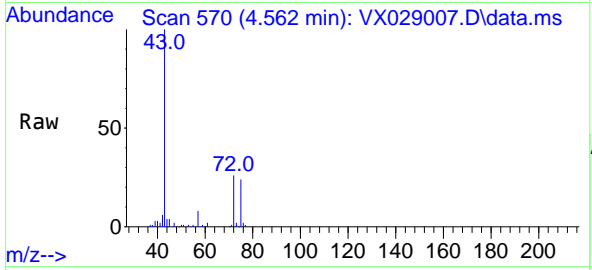
Tgt Ion: 84 Resp: 2146
 Ion Ratio Lower Upper
 84 100
 49 102.5 85.5 128.3
 51 35.6 26.6 39.8
 86 55.4 51.5 77.3



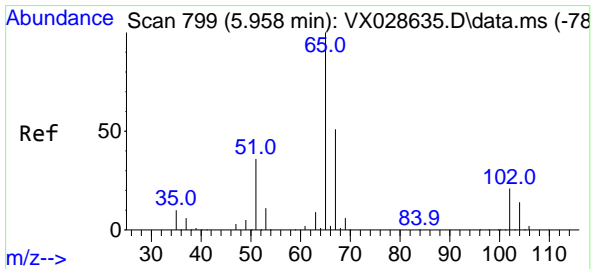
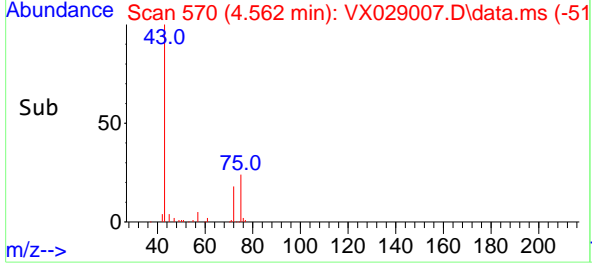
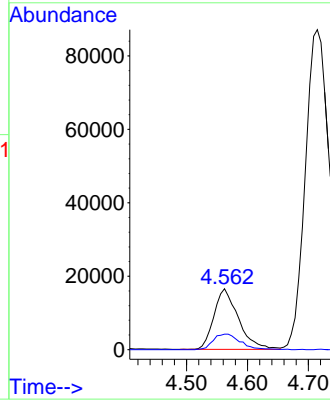


#25
 2-Butanone
 Concen: 15.546 ug/l
 RT: 4.562 min Scan# 51
 Delta R.T. 0.012 min
 Lab File: VX029007.D
 Acq: 26 May 2022 18:22

Instrument :
 MSVOA_X
 ClientSampleId :
 52322-E

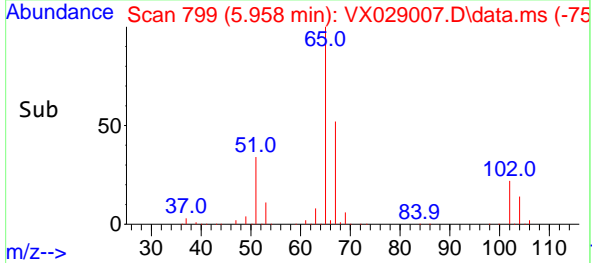
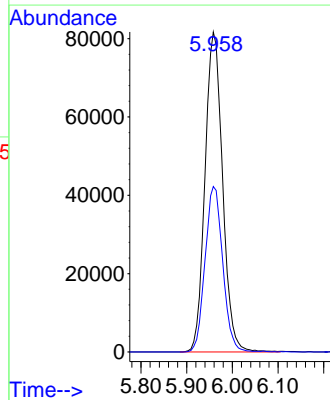
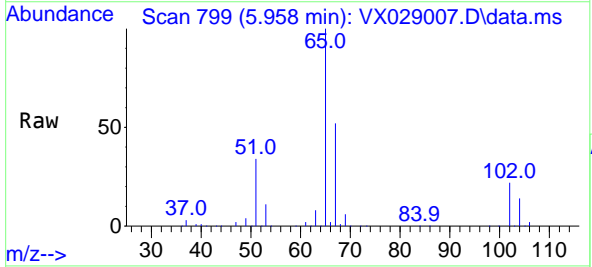


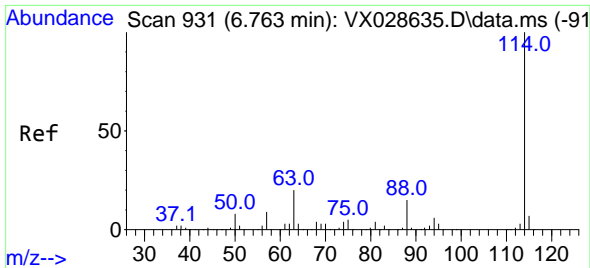
Tgt Ion: 43 Resp: 46182
 Ion Ratio Lower Upper
 43 100
 72 25.6 24.4 36.6



#33
 1,2-Dichloroethane-d4
 Concen: 49.488 ug/l
 RT: 5.958 min Scan# 799
 Delta R.T. 0.000 min
 Lab File: VX029007.D
 Acq: 26 May 2022 18:22

Tgt Ion: 65 Resp: 218228
 Ion Ratio Lower Upper
 65 100
 67 51.8 0.0 107.4



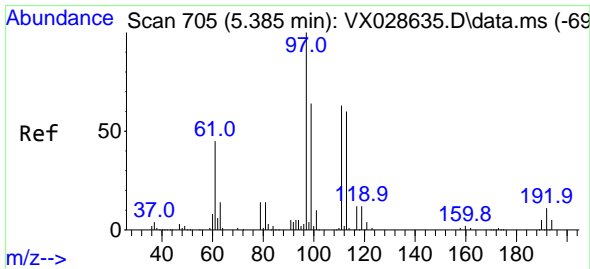
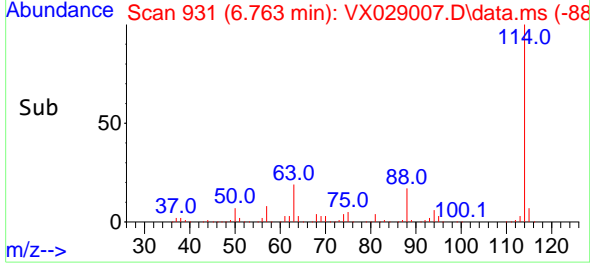
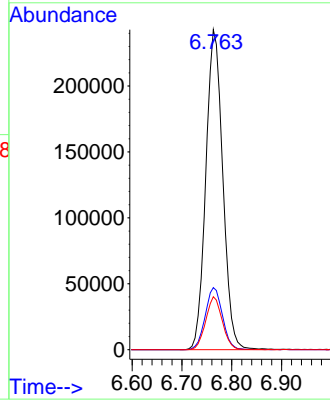
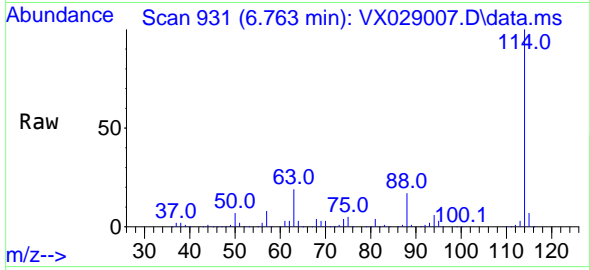


#34
 1,4-Difluorobenzene
 Concen: 50.000 ug/l
 RT: 6.763 min Scan# 91
 Delta R.T. -0.000 min
 Lab File: VX029007.D
 Acq: 26 May 2022 18:22

Instrument : MSVOA_X
 ClientSampleId : 52322-E

Tgt Ion:114 Resp: 573198

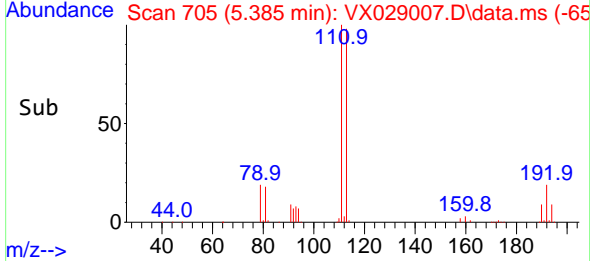
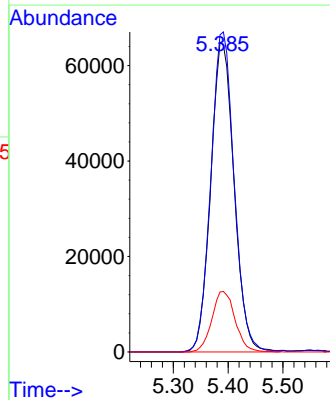
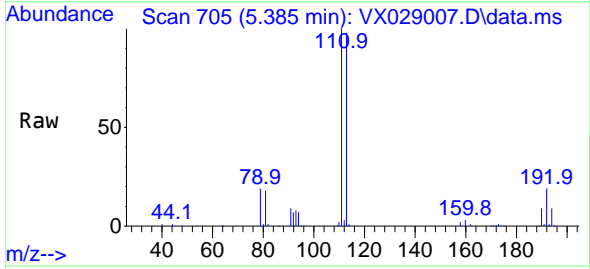
Ion	Ratio	Lower	Upper
114	100		
63	19.4	0.0	36.8
88	16.5	0.0	32.4

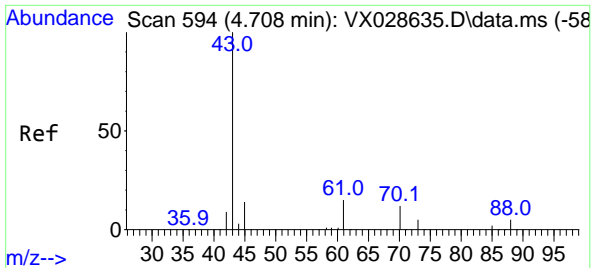


#35
 Dibromofluoromethane
 Concen: 51.108 ug/l
 RT: 5.385 min Scan# 705
 Delta R.T. 0.000 min
 Lab File: VX029007.D
 Acq: 26 May 2022 18:22

Tgt Ion:113 Resp: 191936

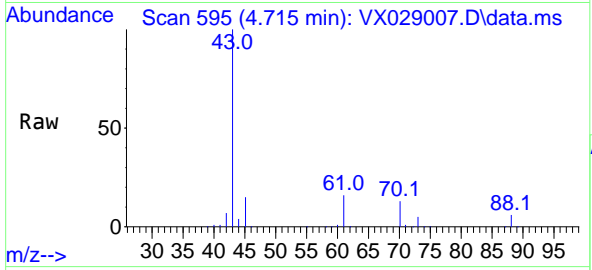
Ion	Ratio	Lower	Upper
113	100		
111	102.8	82.8	124.2
192	19.5	16.9	25.3





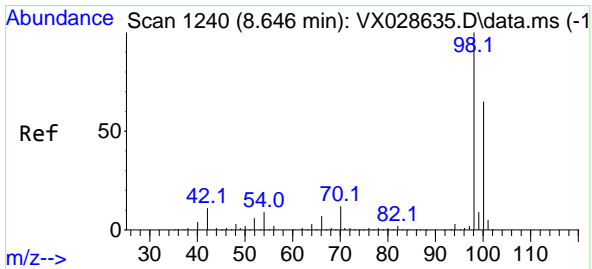
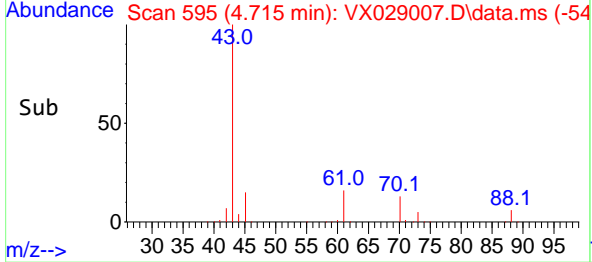
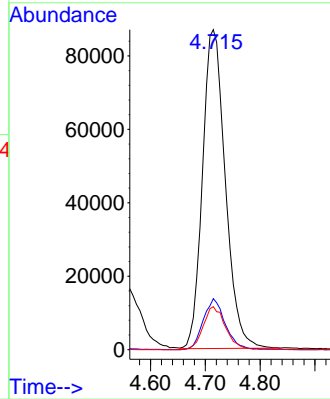
#37
 Ethyl Acetate
 Concen: 42.593 ug/l
 RT: 4.715 min Scan# 594
 Delta R.T. 0.007 min
 Lab File: VX029007.D
 Acq: 26 May 2022 18:22

Instrument : MSVOA_X
 ClientSampleId : 52322-E



Tgt Ion: 43 Resp: 250940

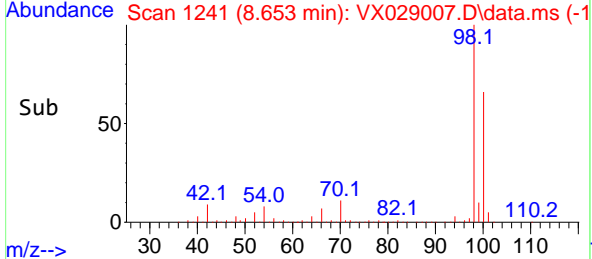
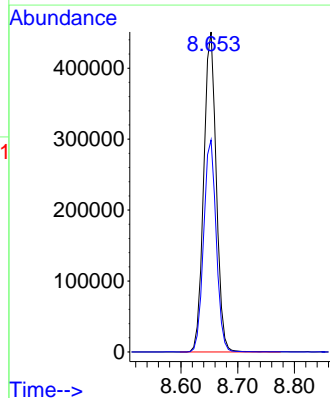
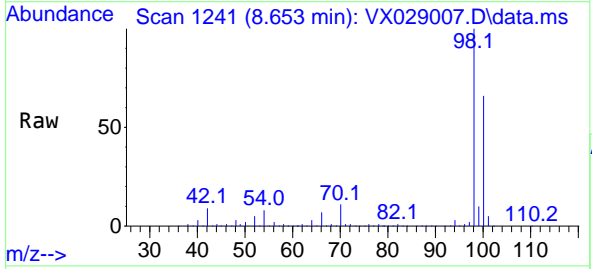
Ion	Ratio	Lower	Upper
43	100		
61	15.5	12.6	19.0
70	13.2	10.2	15.2

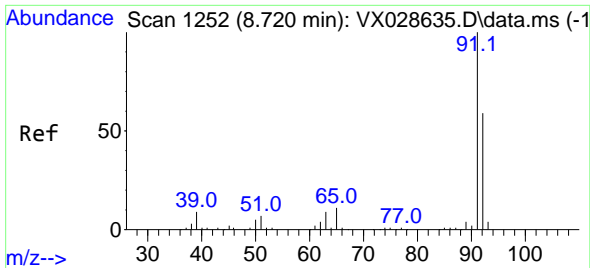


#50
 Toluene-d8
 Concen: 48.695 ug/l
 RT: 8.653 min Scan# 1241
 Delta R.T. 0.007 min
 Lab File: VX029007.D
 Acq: 26 May 2022 18:22

Tgt Ion: 98 Resp: 689466

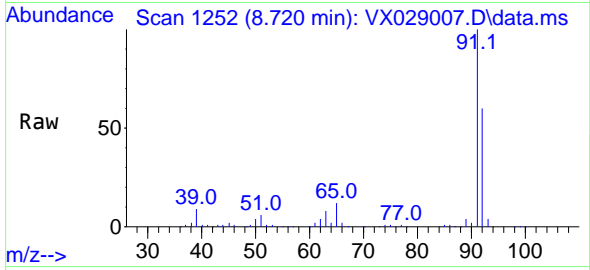
Ion	Ratio	Lower	Upper
98	100		
100	66.5	52.6	78.8



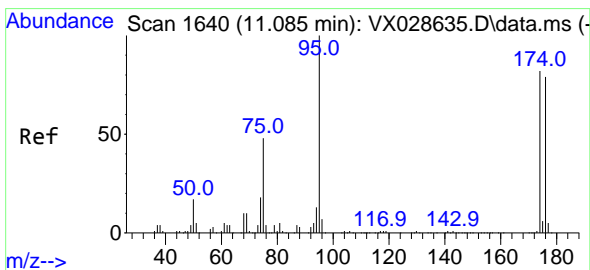
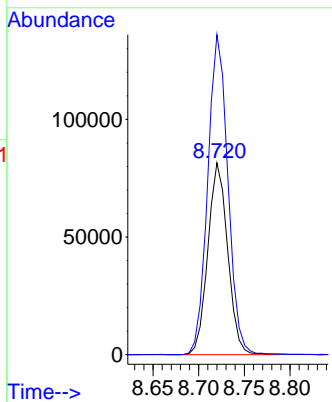
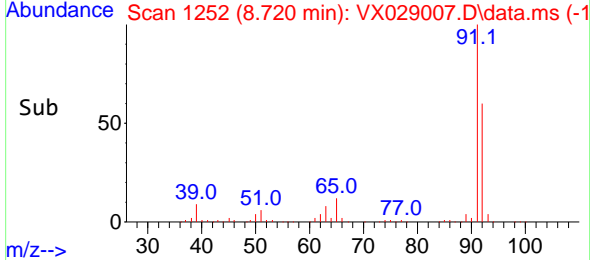


#52
 Toluene
 Concen: 11.787 ug/l
 RT: 8.720 min Scan# 11
 Delta R.T. -0.000 min
 Lab File: VX029007.D
 Acq: 26 May 2022 18:22

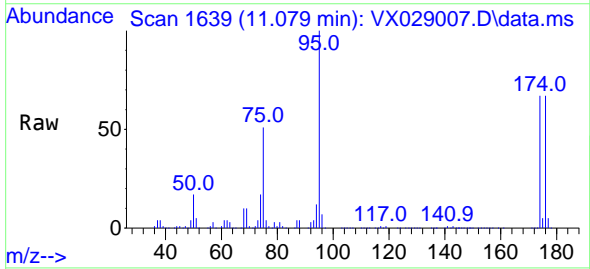
Instrument : MSVOA_X
 ClientSampleId : 52322-E



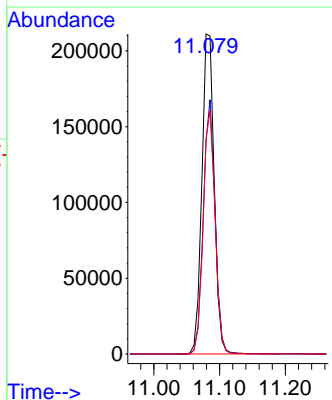
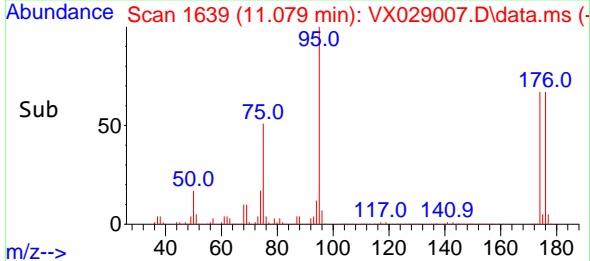
Tgt Ion: 92 Resp: 122920
 Ion Ratio Lower Upper
 92 100
 91 169.8 137.5 206.3

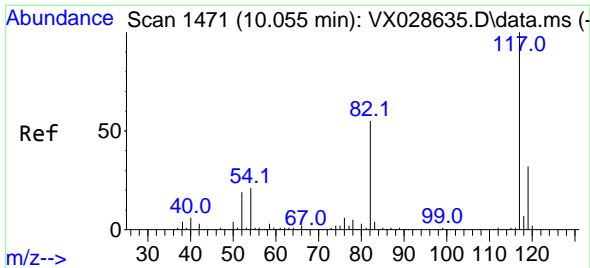


#62
 4-Bromofluorobenzene
 Concen: 52.071 ug/l
 RT: 11.079 min Scan# 1639
 Delta R.T. -0.006 min
 Lab File: VX029007.D
 Acq: 26 May 2022 18:22



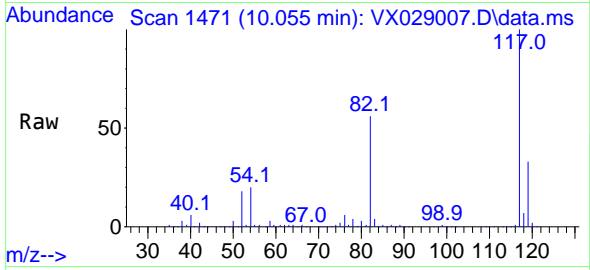
Tgt Ion: 95 Resp: 275376
 Ion Ratio Lower Upper
 95 100
 174 75.5 0.0 163.0
 176 73.5 0.0 155.0



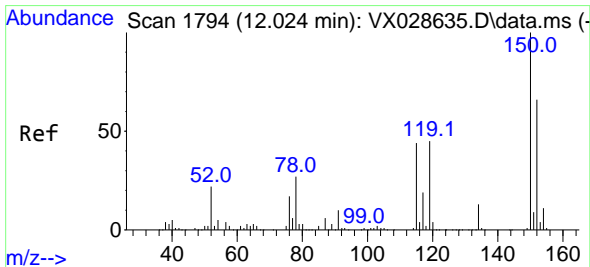
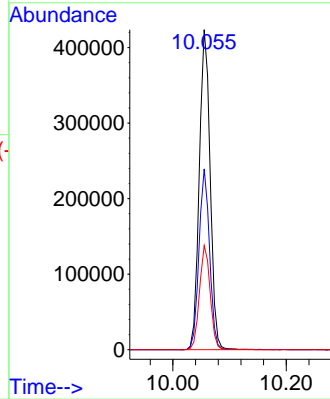
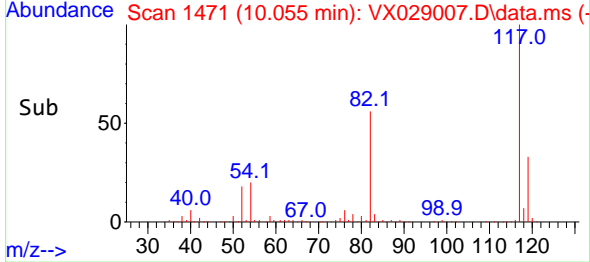


#63
 Chlorobenzene-d5
 Concen: 50.000 ug/l
 RT: 10.055 min Scan# 1471
 Delta R.T. 0.000 min
 Lab File: VX029007.D
 Acq: 26 May 2022 18:22

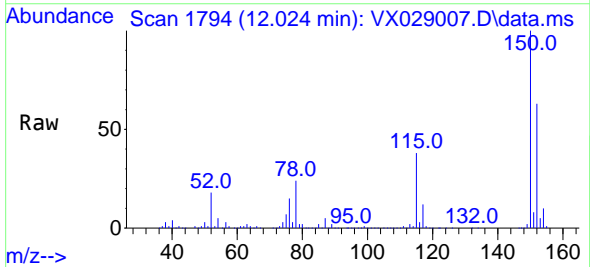
Instrument : MSVOA_X
 ClientSampleId : 52322-E



Tgt Ion:117 Resp: 563300
 Ion Ratio Lower Upper
 117 100
 82 56.5 41.8 62.8
 119 32.6 24.8 37.2



#72
 1,4-Dichlorobenzene-d4
 Concen: 50.000 ug/l
 RT: 12.024 min Scan# 1794
 Delta R.T. 0.000 min
 Lab File: VX029007.D
 Acq: 26 May 2022 18:22



Tgt Ion:152 Resp: 267042
 Ion Ratio Lower Upper
 152 100
 115 61.2 37.5 112.7
 150 157.7 0.0 338.2

