

Data Path : Z:\voasrv\HPCHEM1\MSVOA_X\Data\VX052722\
 Data File : VX029034.D
 Acq On : 27 May 2022 19:07
 Operator : JC/MD
 Sample : N2968-02
 Misc : 5.0mL/MSVOA_X/WATER
 ALS Vial : 20 Sample Multiplier: 1

Instrument :
 MSVOA_X
 ClientSampleId :
 MW-45

Quant Time: May 27 22:11:32 2022
 Quant Method : Z:\voasrv\HPCHEM1\MSVOA_X\Method\82X051222W.M
 Quant Title : SW846 8260
 QLast Update : Thu May 12 14:58:53 2022
 Response via : Initial Calibration

Compound	R.T.	QIon	Response	Conc	Units	Dev(Min)

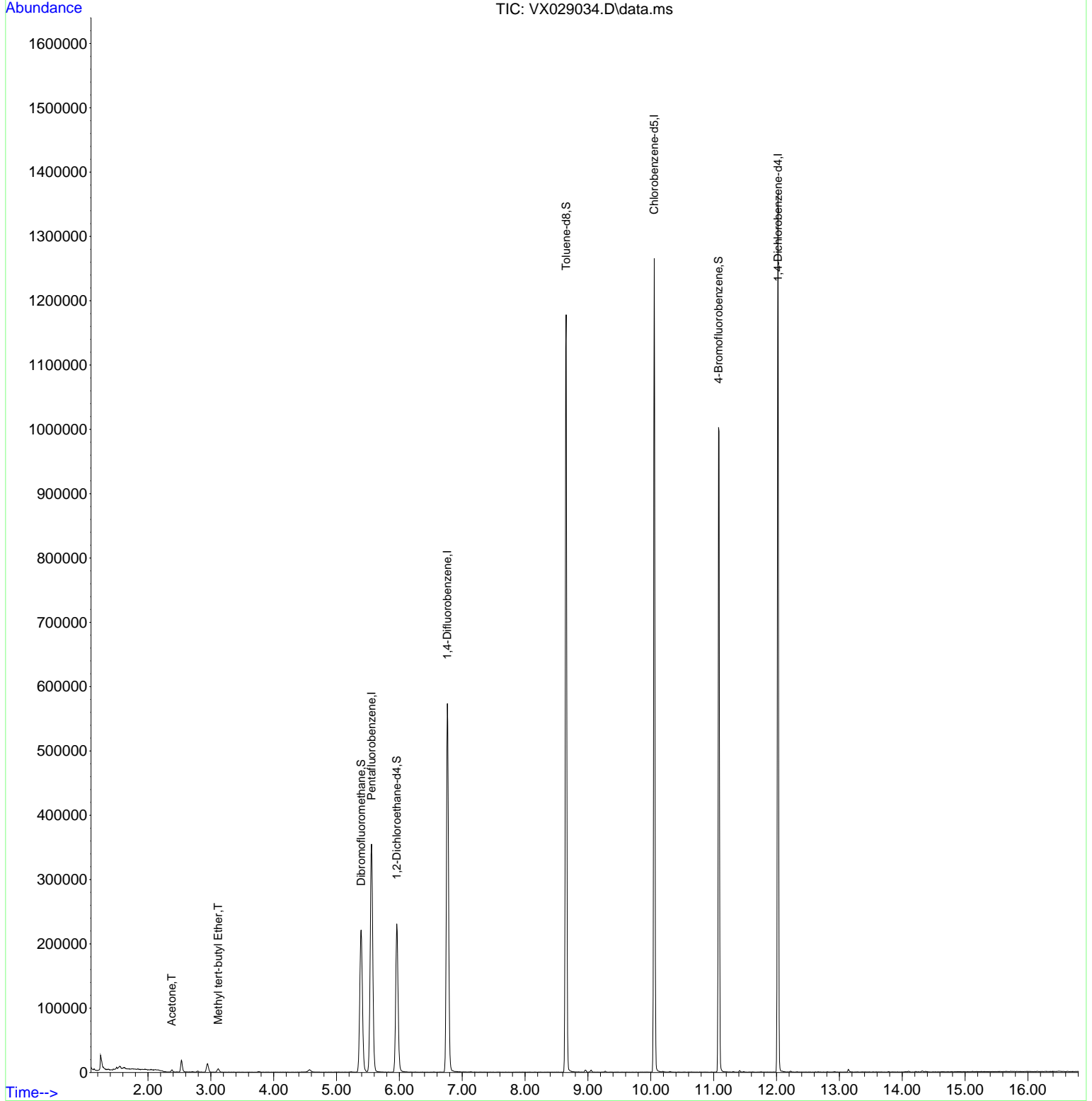
Internal Standards						
1) Pentafluorobenzene	5.556	168	340150	50.000	ug/l	0.00
34) 1,4-Difluorobenzene	6.763	114	605637	50.000	ug/l	0.00
63) Chlorobenzene-d5	10.055	117	589888	50.000	ug/l	0.00
72) 1,4-Dichlorobenzene-d4	12.024	152	282716	50.000	ug/l	0.00
System Monitoring Compounds						
33) 1,2-Dichloroethane-d4	5.958	65	223083	47.845	ug/l	0.00
Spiked Amount	50.000	Range	61 - 141	Recovery	=	95.680%
35) Dibromofluoromethane	5.391	113	199470	50.269	ug/l	0.00
Spiked Amount	50.000	Range	69 - 133	Recovery	=	100.540%
50) Toluene-d8	8.653	98	717439	47.956	ug/l	0.00
Spiked Amount	50.000	Range	65 - 126	Recovery	=	95.920%
62) 4-Bromofluorobenzene	11.079	95	284882	50.983	ug/l	0.00
Spiked Amount	50.000	Range	58 - 135	Recovery	=	101.960%
Target Compounds						
					Qvalue	
16) Acetone	2.380	43	3872	1.935	ug/l	90
19) Methyl tert-butyl Ether	3.117	73	6011	0.481	ug/l #	90

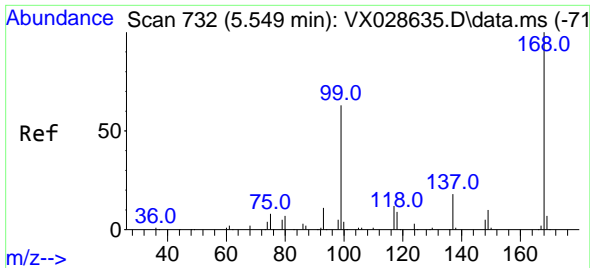
(#) = qualifier out of range (m) = manual integration (+) = signals summed

Data Path : Z:\voasrv\HPCHEM1\MSVOA_X\Data\VX052722\
 Data File : VX029034.D
 Acq On : 27 May 2022 19:07
 Operator : JC/MD
 Sample : N2968-02
 Misc : 5.0mL/MSVOA_X/WATER
 ALS Vial : 20 Sample Multiplier: 1

Instrument :
 MSVOA_X
 ClientSampleId :
 MW-45

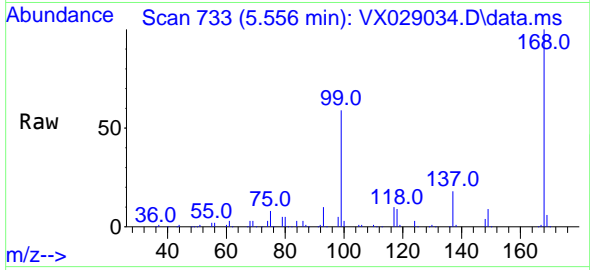
Quant Time: May 27 22:11:32 2022
 Quant Method : Z:\voasrv\HPCHEM1\MSVOA_X\Method\82X051222W.M
 Quant Title : SW846 8260
 QLast Update : Thu May 12 14:58:53 2022
 Response via : Initial Calibration



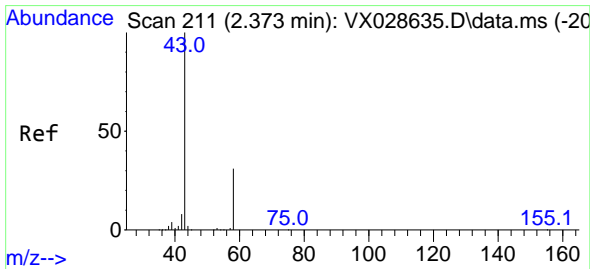
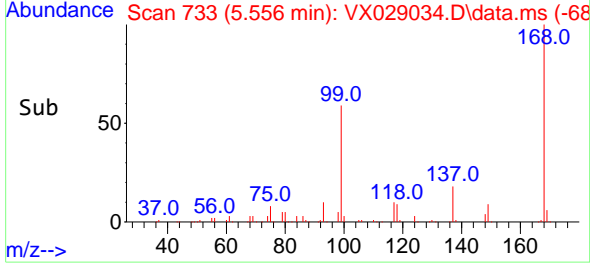
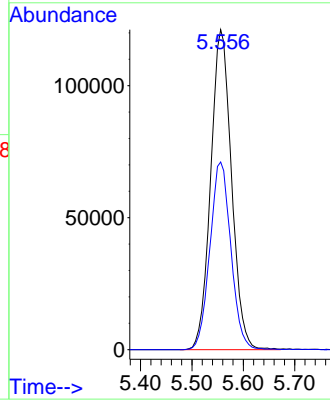


#1
 Pentafluorobenzene
 Concen: 50.000 ug/l
 RT: 5.556 min Scan# 71
 Delta R.T. 0.007 min
 Lab File: VX029034.D
 Acq: 27 May 2022 19:07

Instrument :
 MSVOA_X
 ClientSampleId :
 MW-45

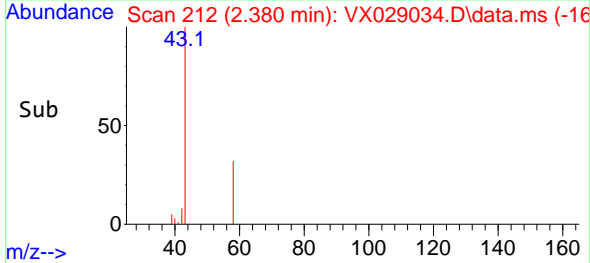
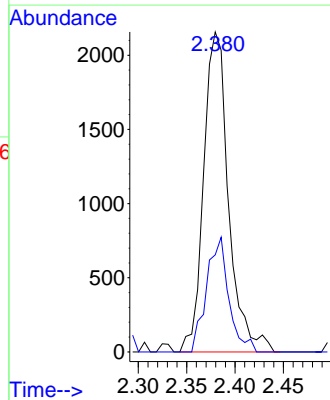
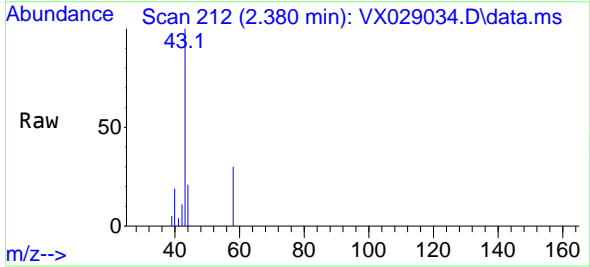


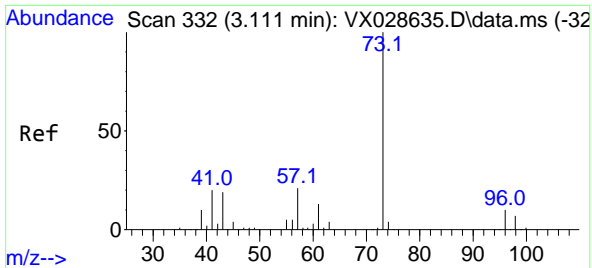
Tgt Ion:168 Resp: 340150
 Ion Ratio Lower Upper
 168 100
 99 58.7 41.7 62.5



#16
 Acetone
 Concen: 1.935 ug/l
 RT: 2.380 min Scan# 212
 Delta R.T. 0.007 min
 Lab File: VX029034.D
 Acq: 27 May 2022 19:07

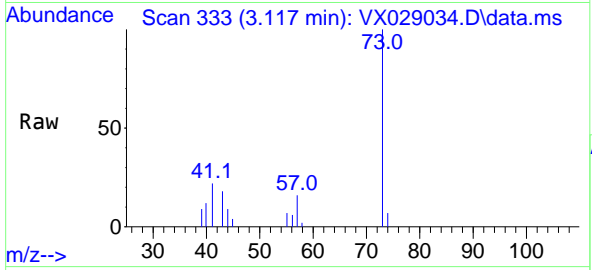
Tgt Ion: 43 Resp: 3872
 Ion Ratio Lower Upper
 43 100
 58 30.4 28.8 43.2



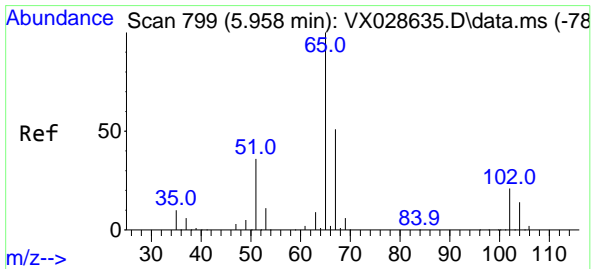
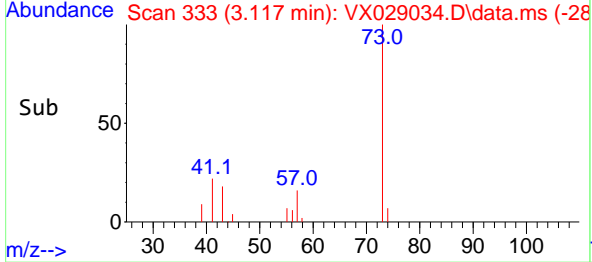
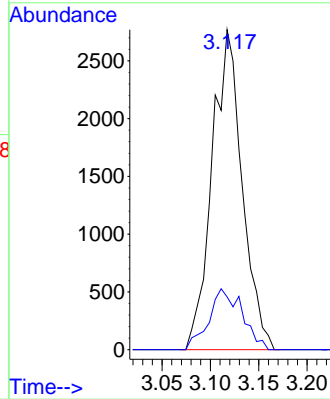


#19
 Methyl tert-butyl Ether
 Concen: 0.481 ug/l
 RT: 3.117 min Scan# 31
 Delta R.T. 0.006 min
 Lab File: VX029034.D
 Acq: 27 May 2022 19:07

Instrument : MSVOA_X
 ClientSampleId : MW-45

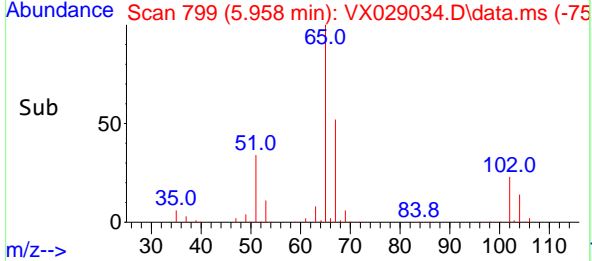
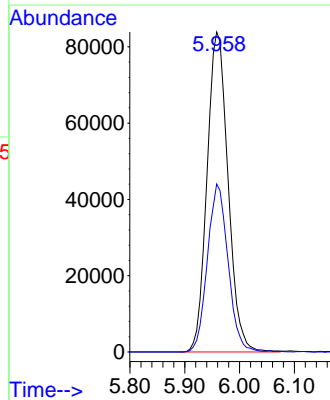
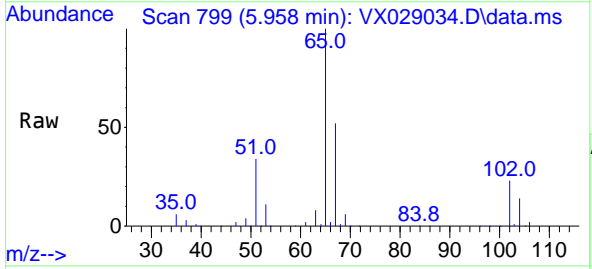


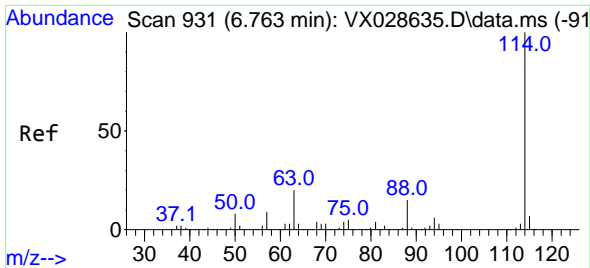
Tgt Ion: 73 Resp: 6011
 Ion Ratio Lower Upper
 73 100
 57 16.5 16.8 25.2#



#33
 1,2-Dichloroethane-d4
 Concen: 47.845 ug/l
 RT: 5.958 min Scan# 799
 Delta R.T. 0.000 min
 Lab File: VX029034.D
 Acq: 27 May 2022 19:07

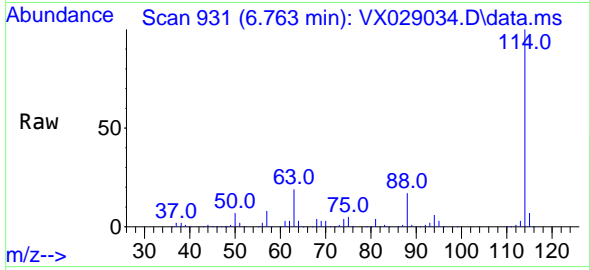
Tgt Ion: 65 Resp: 223083
 Ion Ratio Lower Upper
 65 100
 67 51.4 0.0 107.4



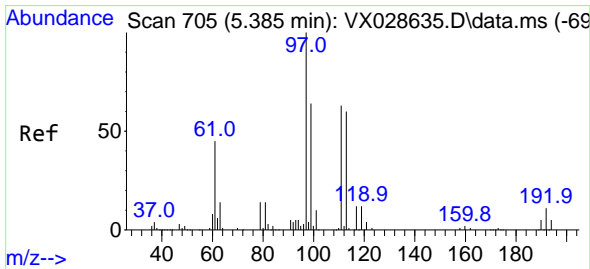
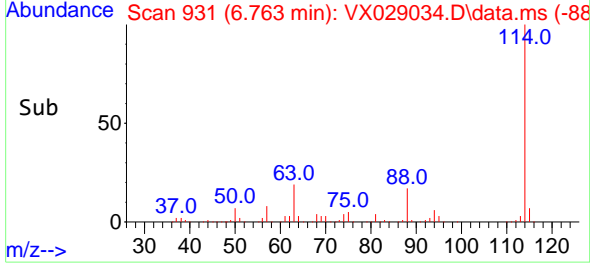
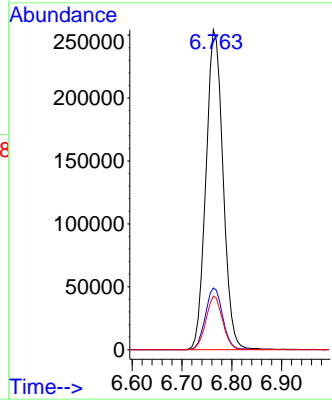


#34
 1,4-Difluorobenzene
 Concen: 50.000 ug/l
 RT: 6.763 min Scan# 91
 Delta R.T. -0.000 min
 Lab File: VX029034.D
 Acq: 27 May 2022 19:07

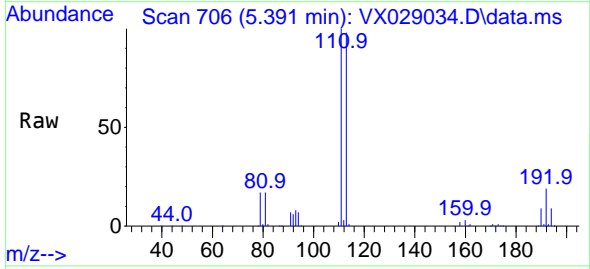
Instrument : MSVOA_X
 ClientSampleId : MW-45



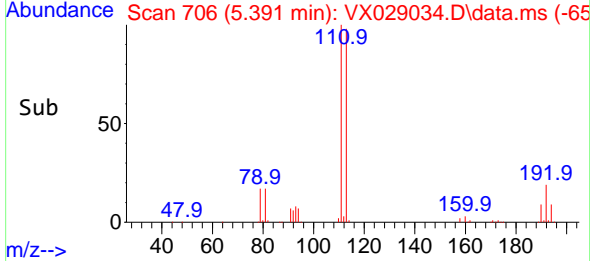
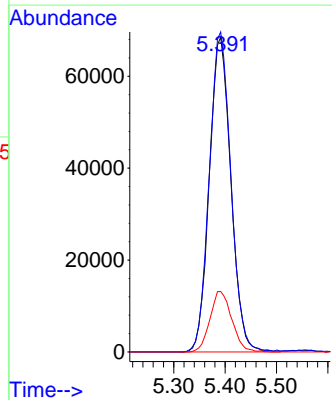
Tgt Ion:114 Resp: 605637
 Ion Ratio Lower Upper
 114 100
 63 19.3 0.0 36.8
 88 16.7 0.0 32.4

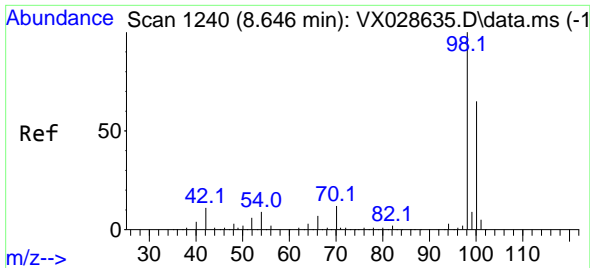


#35
 Dibromofluoromethane
 Concen: 50.269 ug/l
 RT: 5.391 min Scan# 706
 Delta R.T. 0.006 min
 Lab File: VX029034.D
 Acq: 27 May 2022 19:07



Tgt Ion:113 Resp: 199470
 Ion Ratio Lower Upper
 113 100
 111 101.8 82.8 124.2
 192 19.5 16.9 25.3

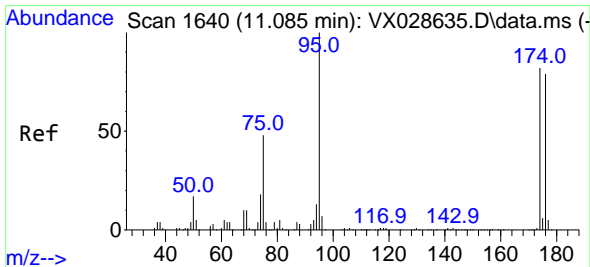
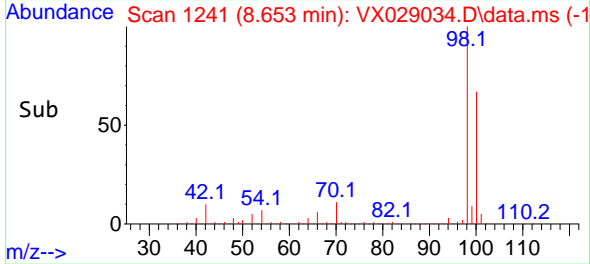
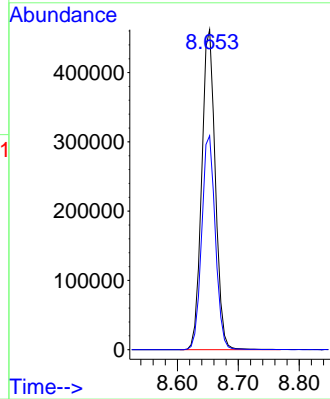
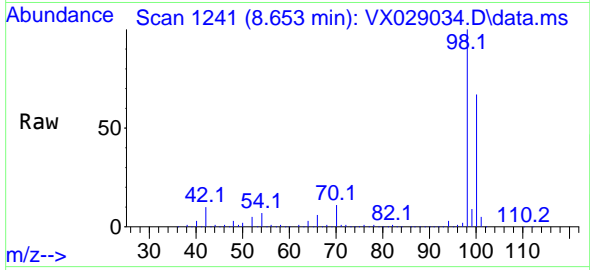




#50
 Toluene-d8
 Concen: 47.956 ug/l
 RT: 8.653 min Scan# 11
 Delta R.T. 0.007 min
 Lab File: VX029034.D
 Acq: 27 May 2022 19:07

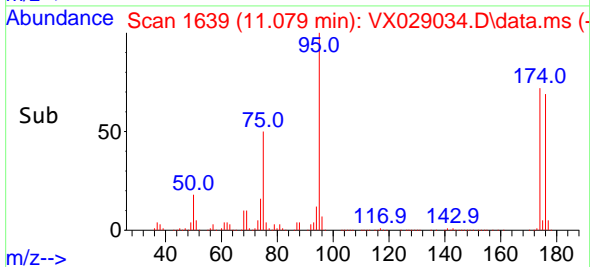
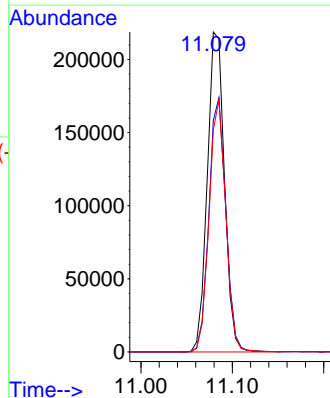
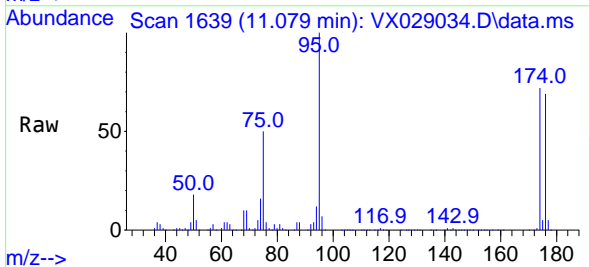
Instrument :
 MSVOA_X
 ClientSampleId :
 MW-45

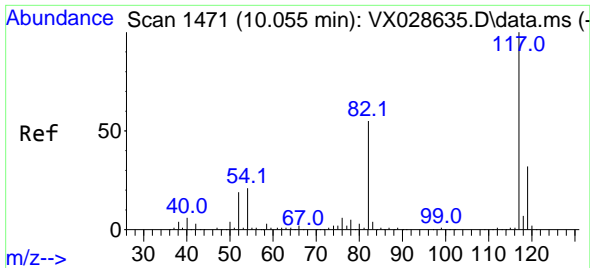
Tgt Ion: 98 Resp: 717439
 Ion Ratio Lower Upper
 98 100
 100 67.1 52.6 78.8



#62
 4-Bromofluorobenzene
 Concen: 50.983 ug/l
 RT: 11.079 min Scan# 1639
 Delta R.T. -0.006 min
 Lab File: VX029034.D
 Acq: 27 May 2022 19:07

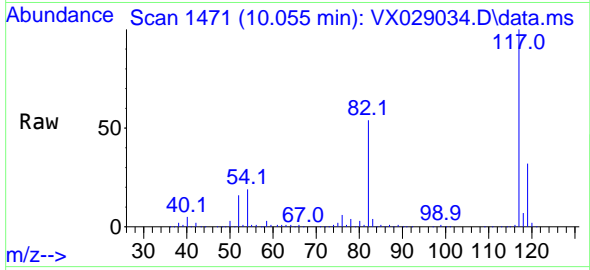
Tgt Ion: 95 Resp: 284882
 Ion Ratio Lower Upper
 95 100
 174 78.2 0.0 163.0
 176 76.5 0.0 155.0



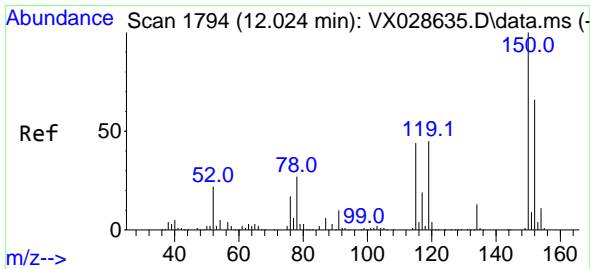
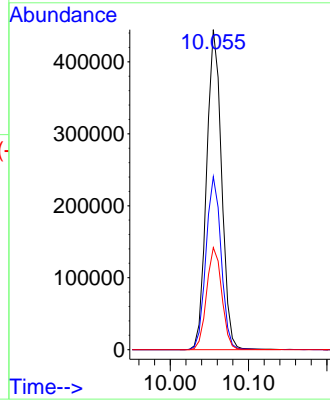
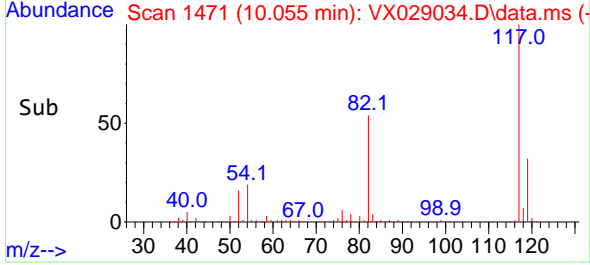


#63
 Chlorobenzene-d5
 Concen: 50.000 ug/l
 RT: 10.055 min Scan# 1471
 Delta R.T. 0.000 min
 Lab File: VX029034.D
 Acq: 27 May 2022 19:07

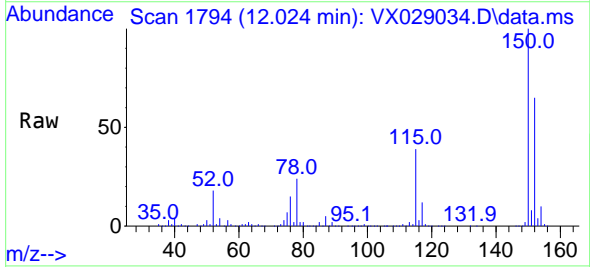
Instrument : MSVOA_X
 ClientSampleId : MW-45



Tgt Ion:117 Resp: 589888
 Ion Ratio Lower Upper
 117 100
 82 54.1 41.8 62.8
 119 31.9 24.8 37.2



#72
 1,4-Dichlorobenzene-d4
 Concen: 50.000 ug/l
 RT: 12.024 min Scan# 1794
 Delta R.T. 0.000 min
 Lab File: VX029034.D
 Acq: 27 May 2022 19:07



Tgt Ion:152 Resp: 282716
 Ion Ratio Lower Upper
 152 100
 115 60.9 37.5 112.7
 150 156.5 0.0 338.2

