

Data Path : Z:\voasrv\HPCHEM1\MSVOA_X\Data\VX052722\
 Data File : VX029061.D
 Acq On : 28 May 2022 06:45
 Operator : JC/MD
 Sample : PB145106ZHE#02
 Misc : 5.0mL/MSVOA_X/WATER
 ALS Vial : 50 Sample Multiplier: 1

Instrument :
 MSVOA_X
 ClientSampleId :
 PB145106ZHE#02

Quant Time: May 28 08:40:28 2022
 Quant Method : Z:\voasrv\HPCHEM1\MSVOA_X\Method\82X051222W.M
 Quant Title : SW846 8260
 QLast Update : Thu May 12 14:58:53 2022
 Response via : Initial Calibration

Compound	R.T.	QIon	Response	Conc	Units	Dev(Min)

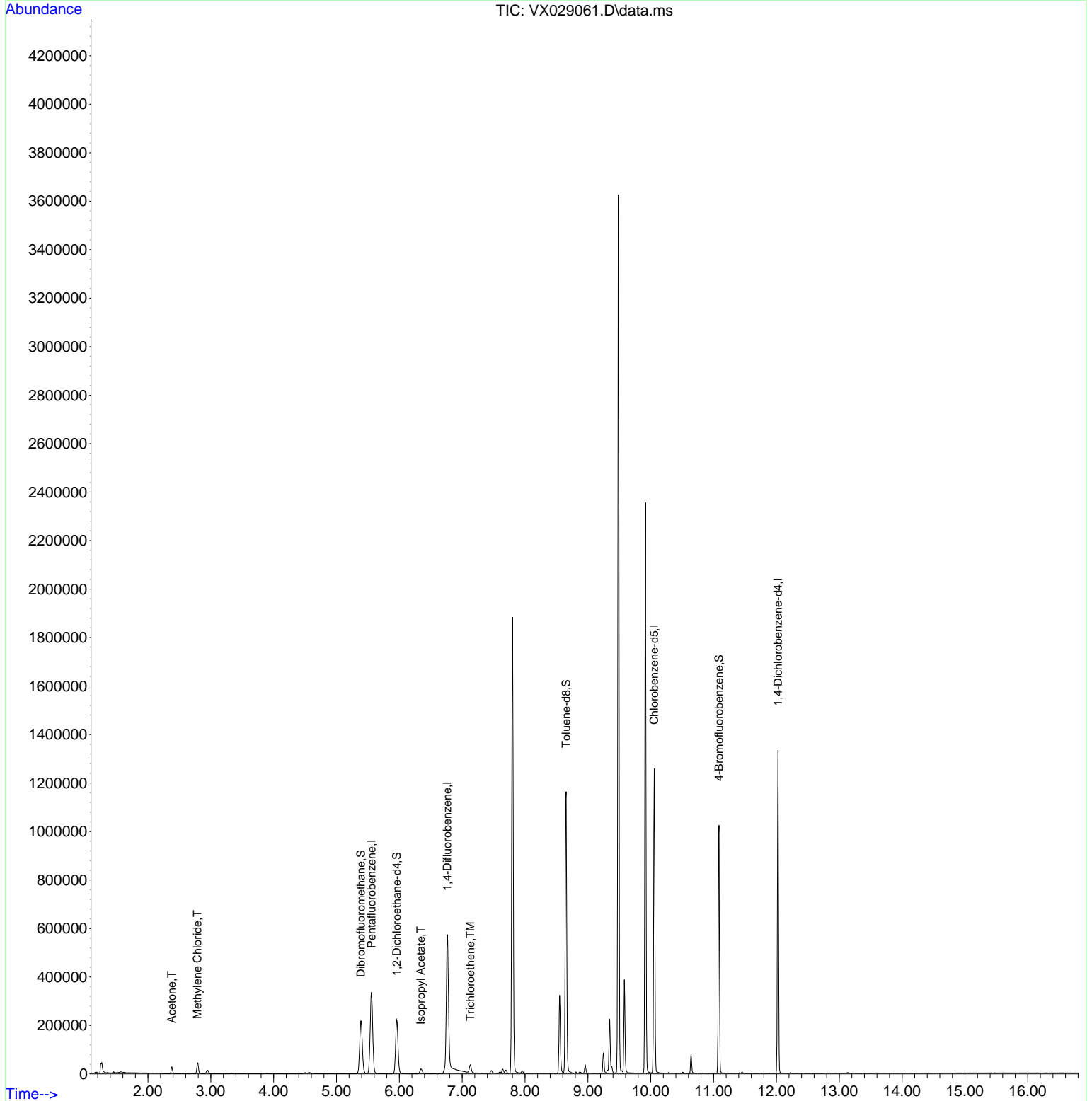
Internal Standards						
1) Pentafluorobenzene	5.556	168	322443	50.000	ug/l	0.00
34) 1,4-Difluorobenzene	6.763	114	580342	50.000	ug/l	0.00
63) Chlorobenzene-d5	10.055	117	573455	50.000	ug/l	0.00
72) 1,4-Dichlorobenzene-d4	12.024	152	279761	50.000	ug/l	0.00
System Monitoring Compounds						
33) 1,2-Dichloroethane-d4	5.958	65	218056	49.335	ug/l	0.00
Spiked Amount	50.000	Range	61 - 141	Recovery	=	98.660%
35) Dibromofluoromethane	5.385	113	196020	51.553	ug/l	0.00
Spiked Amount	50.000	Range	69 - 133	Recovery	=	103.100%
50) Toluene-d8	8.653	98	724485	50.538	ug/l	0.00
Spiked Amount	50.000	Range	65 - 126	Recovery	=	101.080%
62) 4-Bromofluorobenzene	11.085	95	287203	53.639	ug/l	0.00
Spiked Amount	50.000	Range	58 - 135	Recovery	=	107.280%
Target Compounds						
						Qvalue
16) Acetone	2.380	43	27850	14.682	ug/l	99
20) Methylene Chloride	2.788	84	21597	5.427	ug/l	97
43) Isopropyl Acetate	6.342	43	27800	2.979	ug/l	97
44) Trichloroethene	7.129	130	12207	2.742	ug/l	91

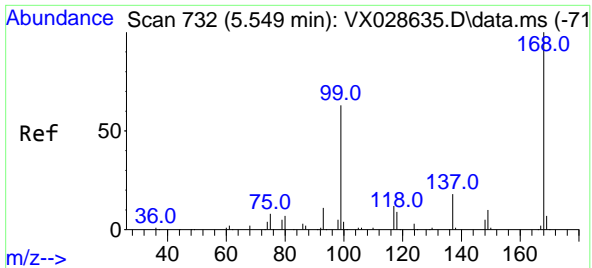
(#) = qualifier out of range (m) = manual integration (+) = signals summed

Data Path : Z:\voasrv\HPCHEM1\MSVOA_X\Data\VX052722\
 Data File : VX029061.D
 Acq On : 28 May 2022 06:45
 Operator : JC/MD
 Sample : PB145106ZHE#02
 Misc : 5.0mL/MSVOA_X/WATER
 ALS Vial : 50 Sample Multiplier: 1

Instrument :
 MSVOA_X
 ClientSampleId :
 PB145106ZHE#02

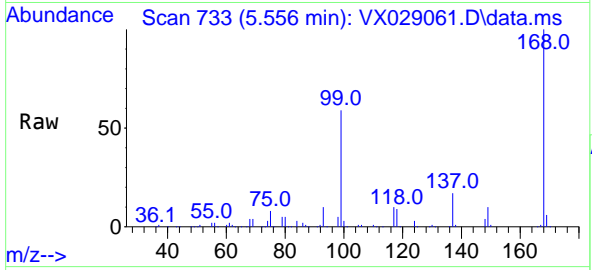
Quant Time: May 28 08:40:28 2022
 Quant Method : Z:\voasrv\HPCHEM1\MSVOA_X\Method\82X051222W.M
 Quant Title : SW846 8260
 QLast Update : Thu May 12 14:58:53 2022
 Response via : Initial Calibration



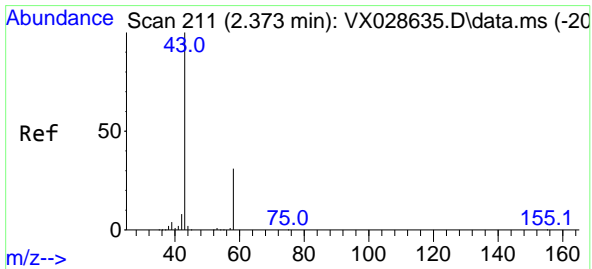
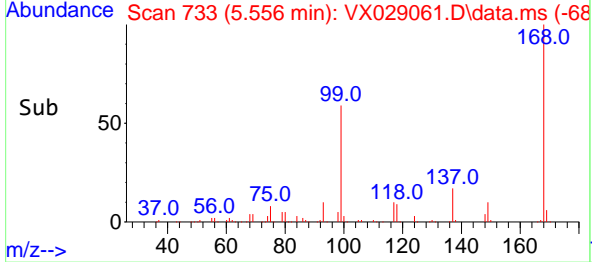
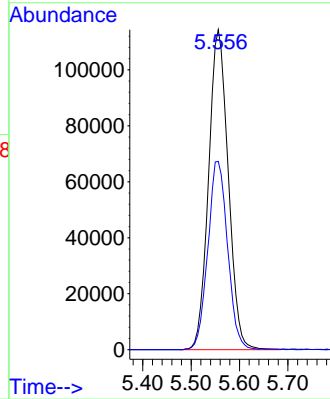


#1
 Pentafluorobenzene
 Concen: 50.000 ug/l
 RT: 5.556 min Scan# 71
 Delta R.T. 0.007 min
 Lab File: VX029061.D
 Acq: 28 May 2022 06:45

Instrument : MSVOA_X
 ClientSampleId : PB145106ZHE#02

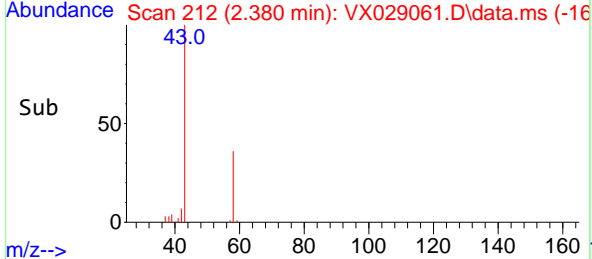
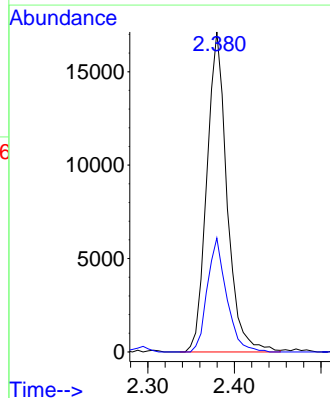
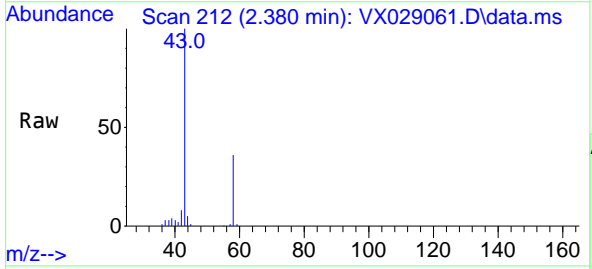


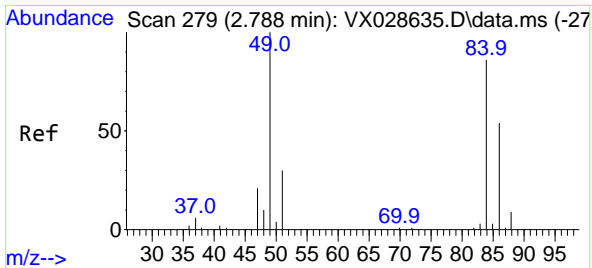
Tgt Ion:168 Resp: 322443
 Ion Ratio Lower Upper
 168 100
 99 58.8 41.7 62.5



#16
 Acetone
 Concen: 14.682 ug/l
 RT: 2.380 min Scan# 212
 Delta R.T. 0.007 min
 Lab File: VX029061.D
 Acq: 28 May 2022 06:45

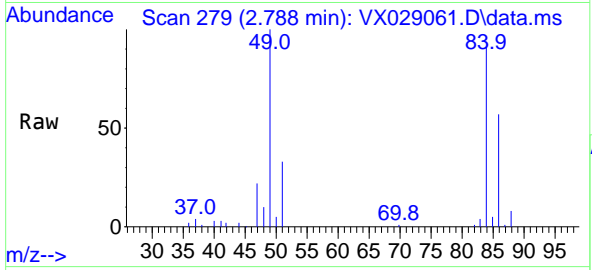
Tgt Ion: 43 Resp: 27850
 Ion Ratio Lower Upper
 43 100
 58 35.6 28.8 43.2





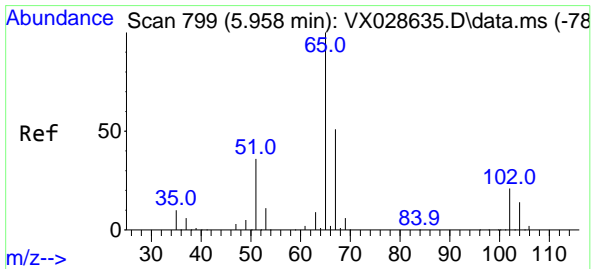
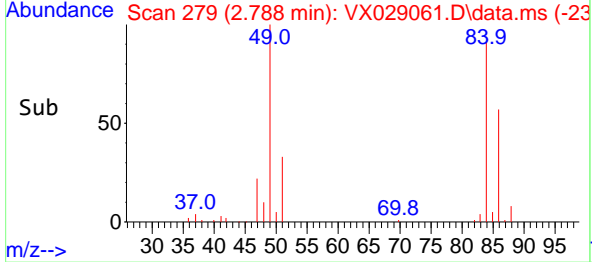
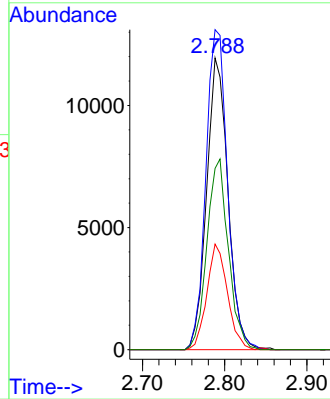
#20
 Methylene Chloride
 Concen: 5.427 ug/l
 RT: 2.788 min Scan# 21
 Delta R.T. 0.000 min
 Lab File: VX029061.D
 Acq: 28 May 2022 06:45

Instrument :
 MSVOA_X
 ClientSampleId :
 PB145106ZHE#02

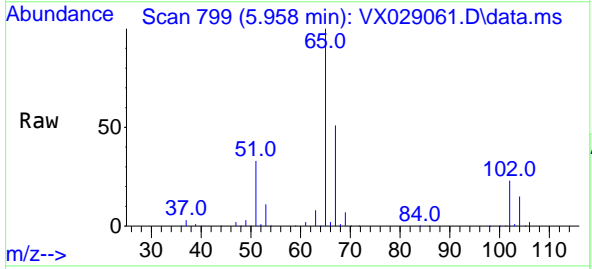


Tgt Ion: 84 Resp: 21597

Ion	Ratio	Lower	Upper
84	100		
49	109.7	85.5	128.3
51	36.2	26.6	39.8
86	62.2	51.5	77.3

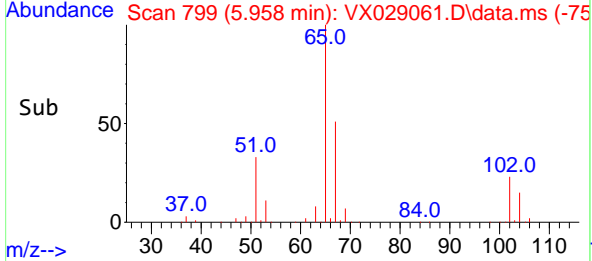
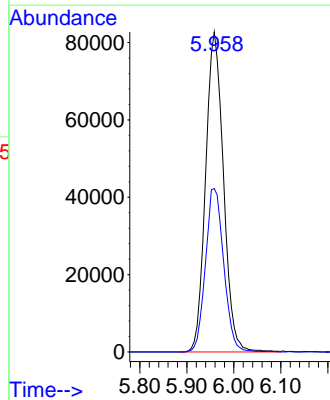


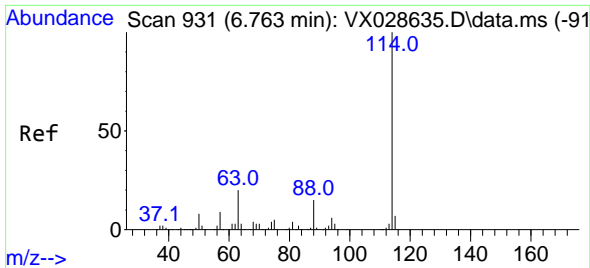
#33
 1,2-Dichloroethane-d4
 Concen: 49.335 ug/l
 RT: 5.958 min Scan# 799
 Delta R.T. 0.000 min
 Lab File: VX029061.D
 Acq: 28 May 2022 06:45



Tgt Ion: 65 Resp: 218056

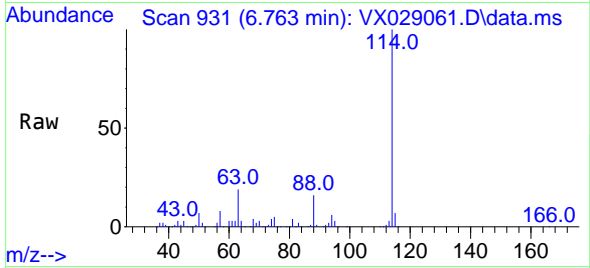
Ion	Ratio	Lower	Upper
65	100		
67	52.3	0.0	107.4



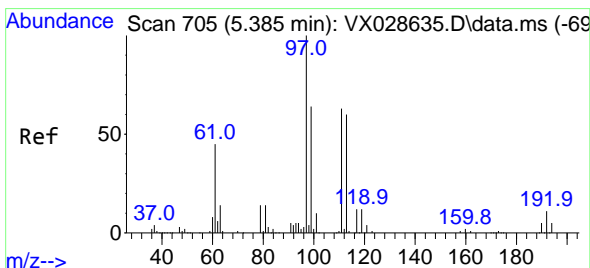
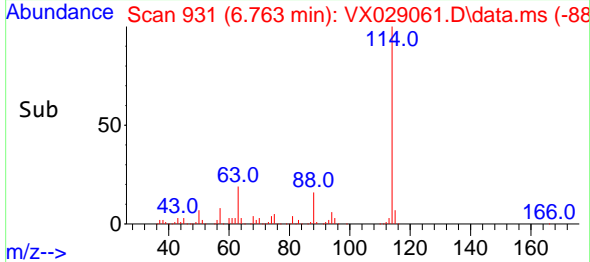
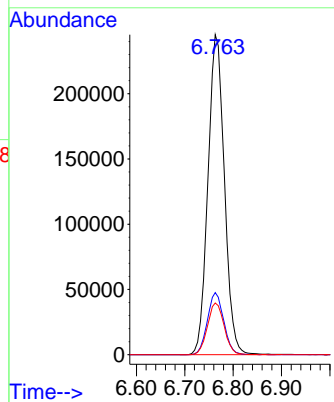


#34
 1,4-Difluorobenzene
 Concen: 50.000 ug/l
 RT: 6.763 min Scan# 91
 Delta R.T. 0.000 min
 Lab File: VX029061.D
 Acq: 28 May 2022 06:45

Instrument : MSVOA_X
 ClientSampleId : PB145106ZHE#02

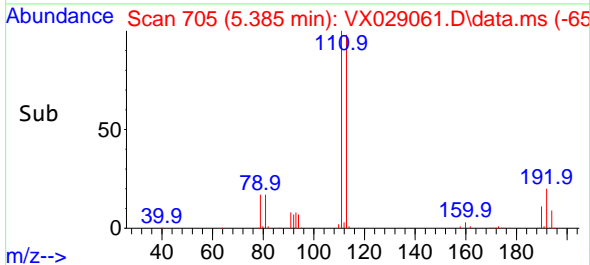
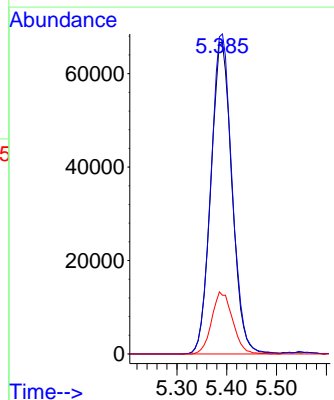
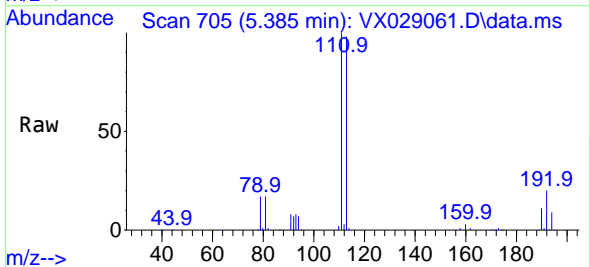


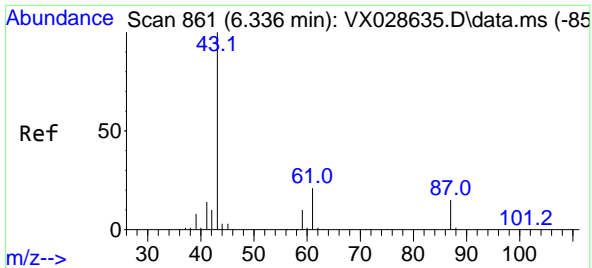
Tgt Ion:114 Resp: 580342
 Ion Ratio Lower Upper
 114 100
 63 19.4 0.0 36.8
 88 16.1 0.0 32.4



#35
 Dibromofluoromethane
 Concen: 51.553 ug/l
 RT: 5.385 min Scan# 705
 Delta R.T. 0.000 min
 Lab File: VX029061.D
 Acq: 28 May 2022 06:45

Tgt Ion:113 Resp: 196020
 Ion Ratio Lower Upper
 113 100
 111 103.0 82.8 124.2
 192 19.7 16.9 25.3



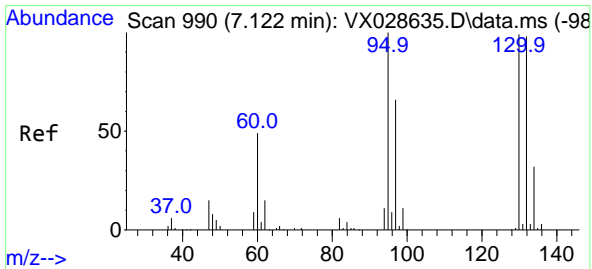
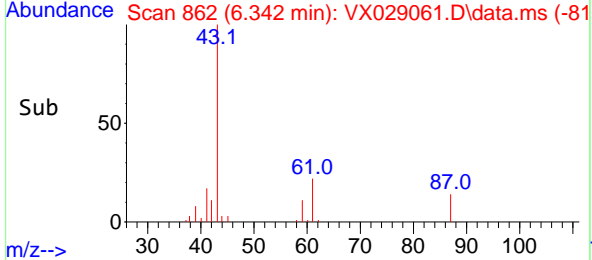
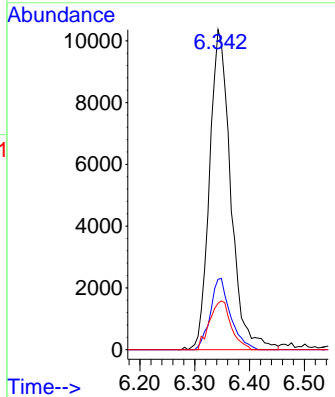
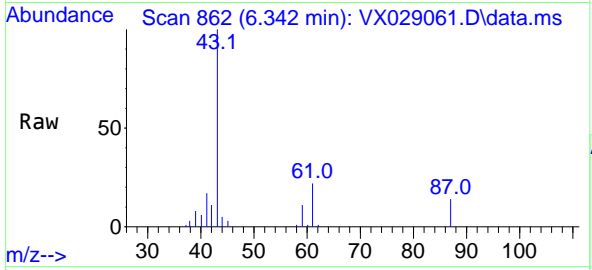


#43
 Isopropyl Acetate
 Concen: 2.979 ug/l
 RT: 6.342 min Scan# 80
 Delta R.T. 0.006 min
 Lab File: VX029061.D
 Acq: 28 May 2022 06:45

Instrument : MSVOA_X
 ClientSampleId : PB145106ZHE#02

Tgt Ion: 43 Resp: 27800

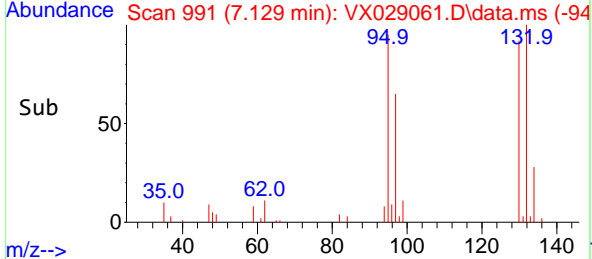
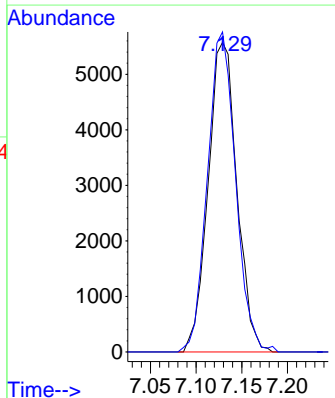
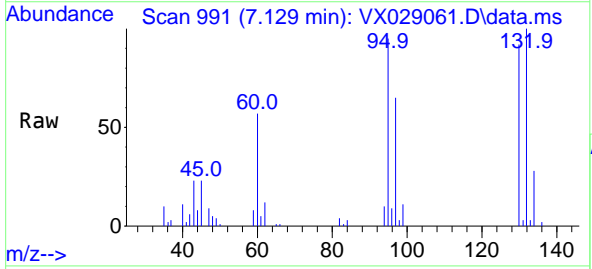
Ion	Ratio	Lower	Upper
43	100		
61	21.1	18.5	27.7
87	15.4	13.0	19.6

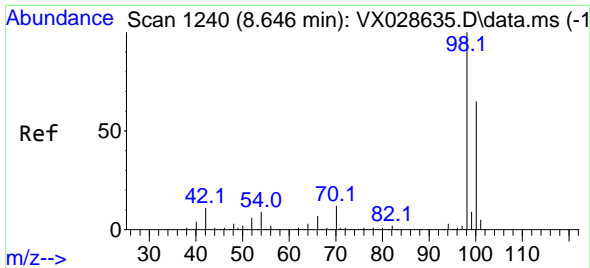


#44
 Trichloroethene
 Concen: 2.742 ug/l
 RT: 7.129 min Scan# 991
 Delta R.T. 0.007 min
 Lab File: VX029061.D
 Acq: 28 May 2022 06:45

Tgt Ion:130 Resp: 12207

Ion	Ratio	Lower	Upper
130	100		
95	103.4	0.0	188.8

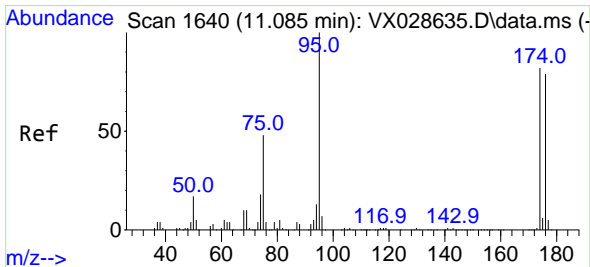
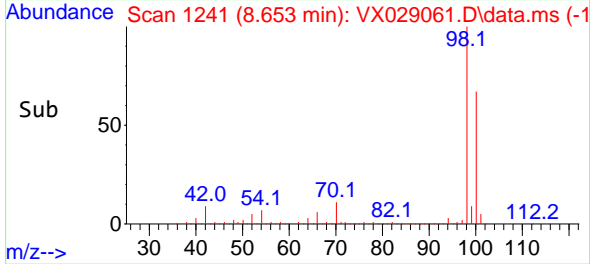
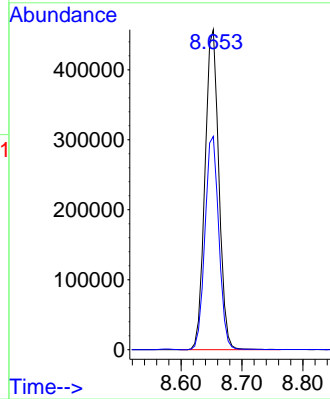
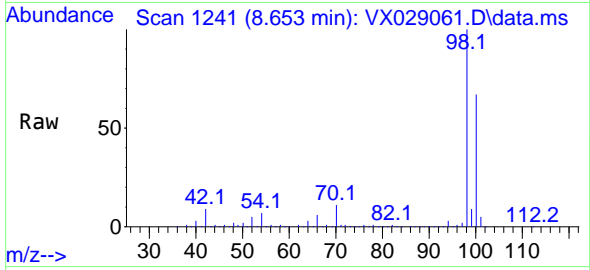




#50
 Toluene-d8
 Concen: 50.538 ug/l
 RT: 8.653 min Scan# 11
 Delta R.T. 0.007 min
 Lab File: VX029061.D
 Acq: 28 May 2022 06:45

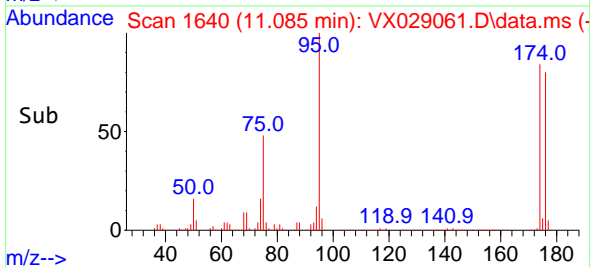
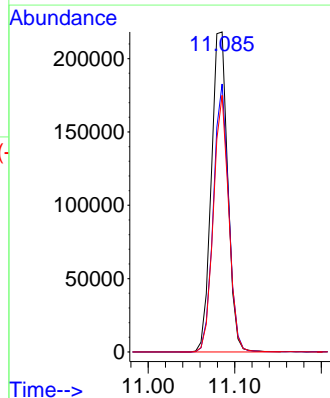
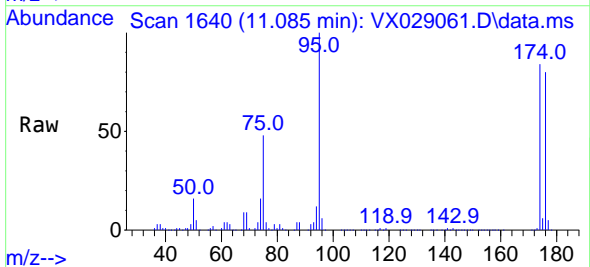
Instrument :
 MSVOA_X
 ClientSampleId :
 PB145106ZHE#02

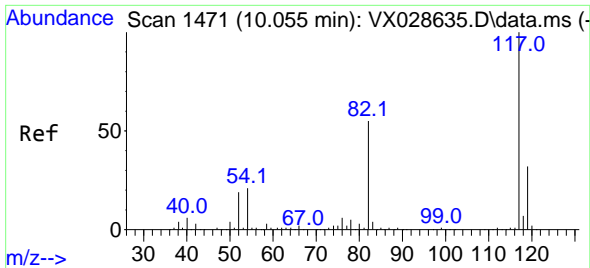
Tgt Ion: 98 Resp: 724485
 Ion Ratio Lower Upper
 98 100
 100 66.5 52.6 78.8



#62
 4-Bromofluorobenzene
 Concen: 53.639 ug/l
 RT: 11.085 min Scan# 1640
 Delta R.T. 0.000 min
 Lab File: VX029061.D
 Acq: 28 May 2022 06:45

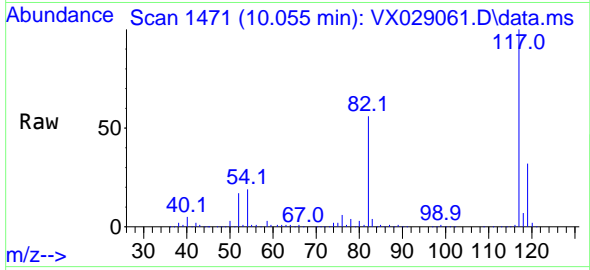
Tgt Ion: 95 Resp: 287203
 Ion Ratio Lower Upper
 95 100
 174 78.2 0.0 163.0
 176 74.9 0.0 155.0





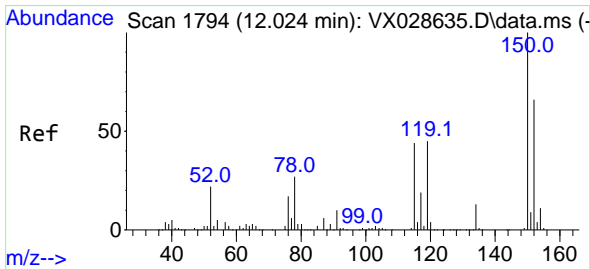
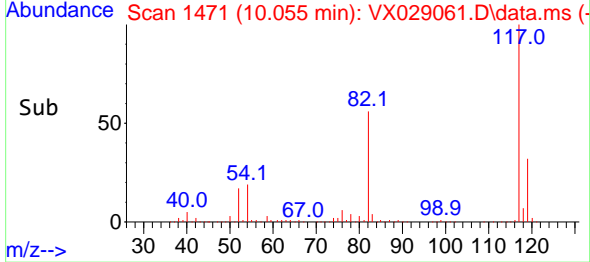
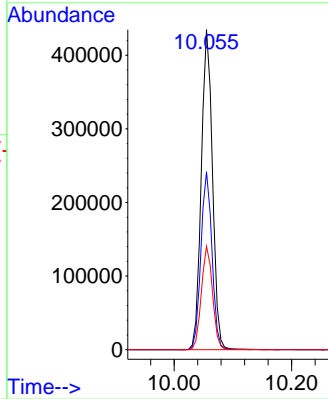
#63
 Chlorobenzene-d5
 Concen: 50.000 ug/l
 RT: 10.055 min Scan# 1471
 Delta R.T. 0.000 min
 Lab File: VX029061.D
 Acq: 28 May 2022 06:45

Instrument : MSVOA_X
 ClientSampleId : PB145106ZHE#02

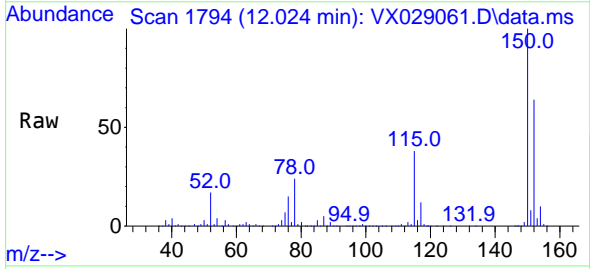


Tgt Ion:117 Resp: 573455

Ion	Ratio	Lower	Upper
117	100		
82	55.6	41.8	62.8
119	32.3	24.8	37.2



#72
 1,4-Dichlorobenzene-d4
 Concen: 50.000 ug/l
 RT: 12.024 min Scan# 1794
 Delta R.T. 0.000 min
 Lab File: VX029061.D
 Acq: 28 May 2022 06:45



Tgt Ion:152 Resp: 279761

Ion	Ratio	Lower	Upper
152	100		
115	60.6	37.5	112.7
150	155.8	0.0	338.2

