

Data Path : Z:\voasrv\HPCHEM1\MSVOA_X\Data\VX052921\
 Data File : VX022263.D
 Acq On : 28 May 2021 20:24
 Operator : JC/MD
 Sample : VX0529WBL02
 Misc : 5.0mL/MSVOA_X/WATER
 ALS Vial : 19 Sample Multiplier: 1

Instrument :
 MSVOA_X
 ClientSampleId :
 VX0529WBL02

Quant Time: May 29 04:16:41 2021
 Quant Method : Z:\voasrv\HPCHEM1\MSVOA_X\Method\82X051921W.M
 Quant Title : SW846 8260
 QLast Update : Wed May 19 14:23:10 2021
 Response via : Initial Calibration

Compound	R.T.	QIon	Response	Conc	Units	Dev(Min)

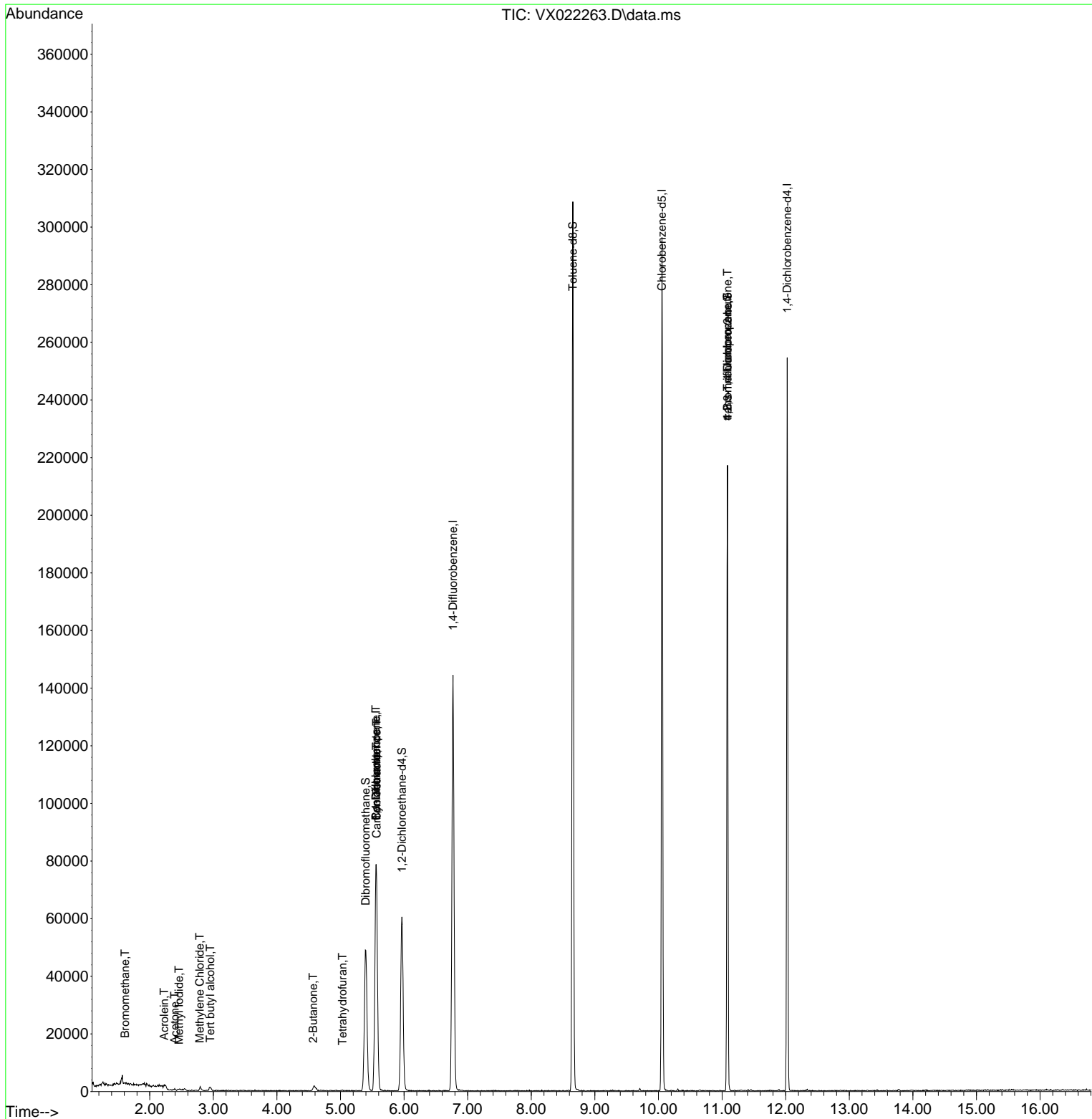
Internal Standards						
1) Pentafluorobenzene	5.556	168	68411	50.00	ug/l	0.00
34) 1,4-Difluorobenzene	6.769	114	142590	50.00	ug/l	0.00
63) Chlorobenzene-d5	10.055	117	124582	50.00	ug/l	0.00
72) 1,4-Dichlorobenzene-d4	12.024	152	44832	50.00	ug/l	0.00
System Monitoring Compounds						
33) 1,2-Dichloroethane-d4	5.964	65	56440	53.48	ug/l	0.00
Spiked Amount	50.000	Range	78 - 117	Recovery	=	106.96%
35) Dibromofluoromethane	5.397	113	43436	48.04	ug/l	0.00
Spiked Amount	50.000	Range	75 - 124	Recovery	=	96.08%
50) Toluene-d8	8.653	98	173847	49.91	ug/l	0.00
Spiked Amount	50.000	Range	92 - 112	Recovery	=	99.82%
62) 4-Bromofluorobenzene	11.085	95	59121	45.92	ug/l	0.00
Spiked Amount	50.000	Range	83 - 123	Recovery	=	91.84%
Target Compounds						
						Qvalue
5) Bromomethane	1.612	94	277	0.50	ug/l #	79
10) Methyl Iodide	2.459	142	513	0.59	ug/l #	82
11) Tert butyl alcohol	2.953	59	729	3.02	ug/l #	73
13) Acrolein	2.227	56	65	0.41	ug/l #	1
16) Acetone	2.392	43	472	1.03	ug/l	89
20) Methylene Chloride	2.788	84	494	0.48	ug/l #	65
25) 2-Butanone	4.568	43	155	0.21	ug/l #	45
29) Tetrahydrofuran	5.032	42	89	0.20	ug/l #	27
31) Cyclohexane	5.562	56	1847	1.39	ug/l #	5
36) 1,1-Dichloropropene	5.556	75	6902	5.23	ug/l #	48
38) Carbon Tetrachloride	5.568	117	7771	6.02	ug/l #	17
76) 1,2,3-Trichloropropane	11.085	75	30464	27.54	ug/l #	39
81) trans-1,4-Dichloro-2-b...	11.085	75	30464	65.26	ug/l #	12

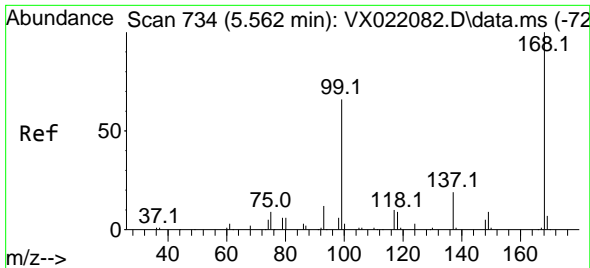
(#) = qualifier out of range (m) = manual integration (+) = signals summed

Data Path : Z:\voasrv\HPCHEM1\MSVOA_X\Data\VX052921\
 Data File : VX022263.D
 Acq On : 28 May 2021 20:24
 Operator : JC/MD
 Sample : VX0529WBL02
 Misc : 5.0mL/MSVOA_X/WATER
 ALS Vial : 19 Sample Multiplier: 1

Instrument :
 MSVOA_X
 Client Sampled :
 VX0529WBL02

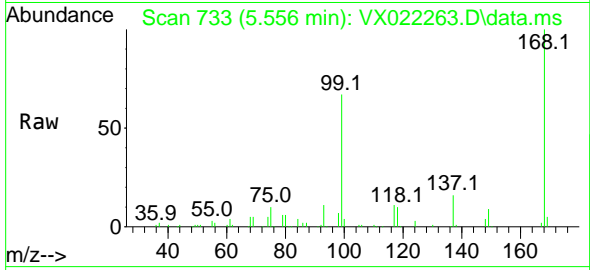
Quant Time: May 29 04:16:41 2021
 Quant Method : Z:\voasrv\HPCHEM1\MSVOA_X\Method\82X051921W.M
 Quant Title : SW846 8260
 QLast Update : Wed May 19 14:23:10 2021
 Response via : Initial Calibration



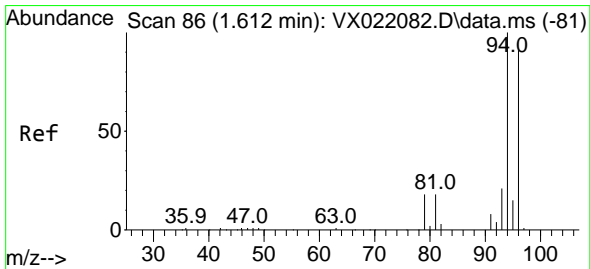
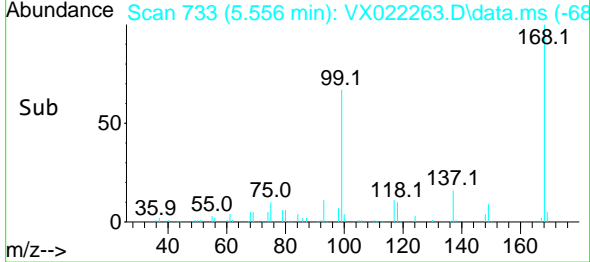
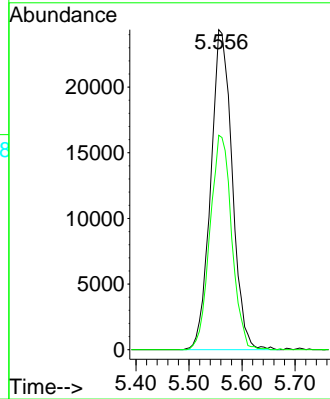


#1
 Pentafluorobenzene
 Concen: 50.00 ug/l
 RT: 5.556 min Scan# 733
 Delta R.T. -0.006 min
 Lab File: VX022263.D
 Acq: 28 May 2021 20:24

Instrument :
 MSVOA_X
 ClientSampled :
 VX0529WBL02

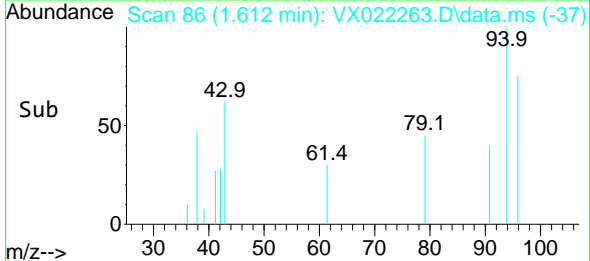
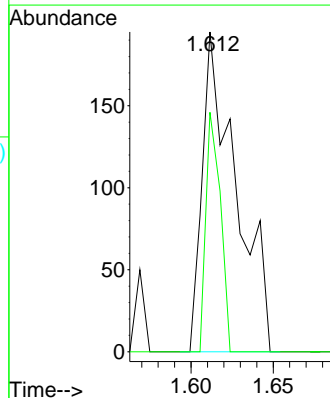
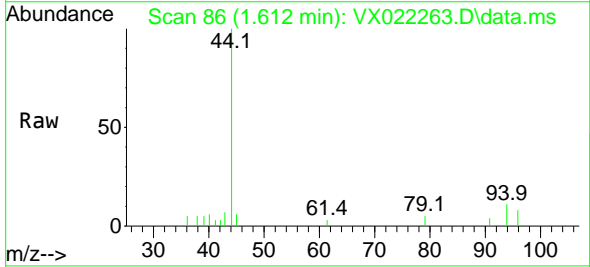


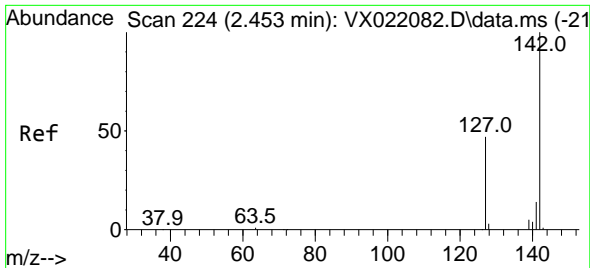
Tgt Ion:168 Resp: 68411
 Ion Ratio Lower Upper
 168 100
 99 67.0 45.8 68.6



#5
 Bromomethane
 Concen: 0.50 ug/l
 RT: 1.612 min Scan# 86
 Delta R.T. -0.000 min
 Lab File: VX022263.D
 Acq: 28 May 2021 20:24

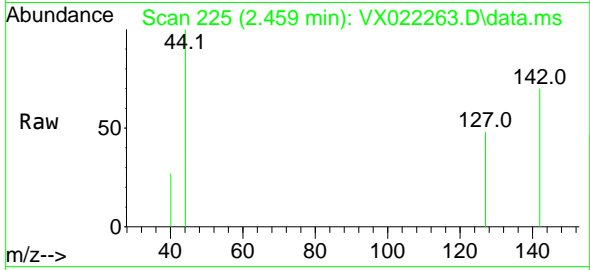
Tgt Ion: 94 Resp: 277
 Ion Ratio Lower Upper
 94 100
 96 74.9 76.4 114.6#



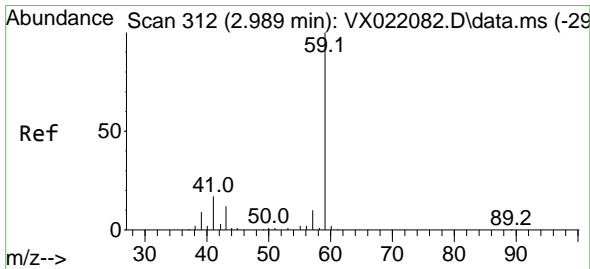
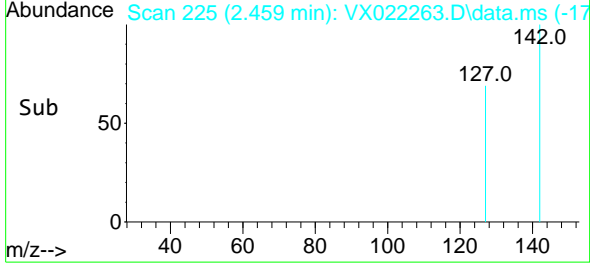
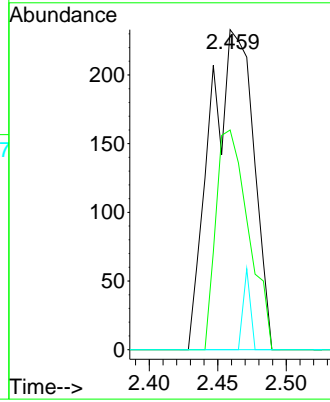


#10
Methyl Iodide
Concen: 0.59 ug/l
RT: 2.459 min Scan# 225
Delta R.T. 0.006 min
Lab File: VX022263.D
Acq: 28 May 2021 20:24

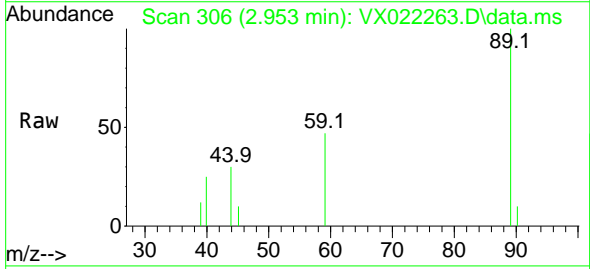
Instrument :
MSVOA_X
ClientSampled :
VX0529WBL02



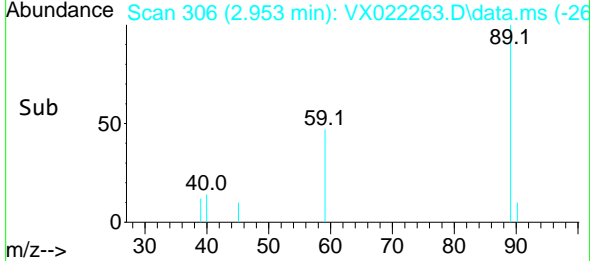
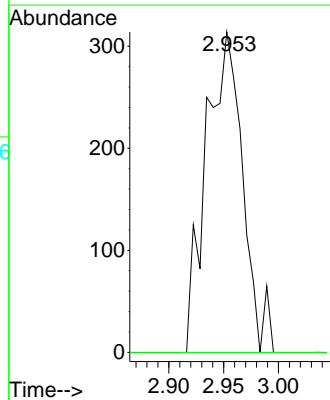
Tgt Ion:142 Resp: 513
Ion Ratio Lower Upper
142 100
127 51.5 33.3 49.9#
141 4.3 11.4 17.0#

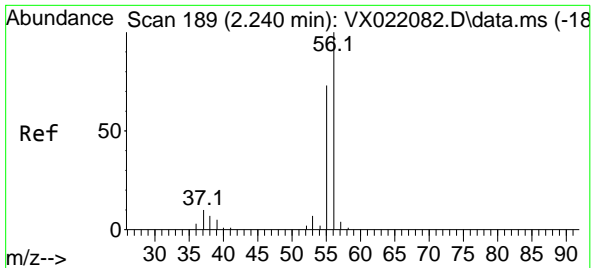


#11
Tert butyl alcohol
Concen: 3.02 ug/l
RT: 2.953 min Scan# 306
Delta R.T. -0.036 min
Lab File: VX022263.D
Acq: 28 May 2021 20:24



Tgt Ion: 59 Resp: 729
Ion Ratio Lower Upper
59 100
57 0.0 7.8 11.8#

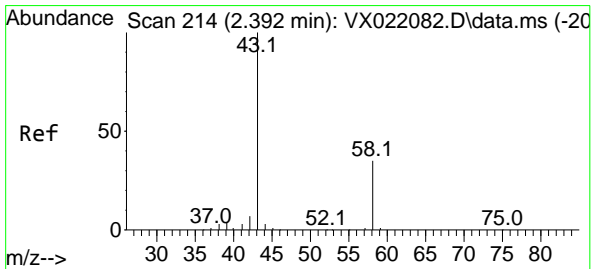
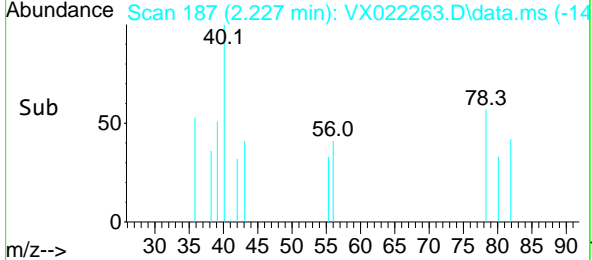
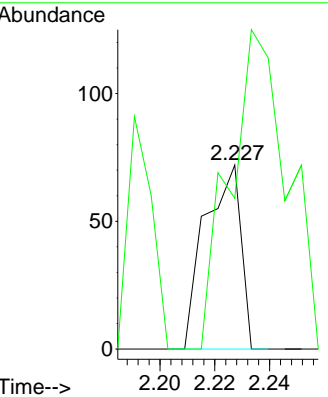
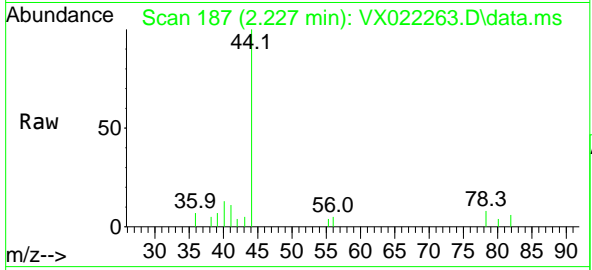




#13
 Acrolein
 Concen: 0.41 ug/l
 RT: 2.227 min Scan# 187
 Delta R.T. -0.013 min
 Lab File: VX022263.D
 Acq: 28 May 2021 20:24

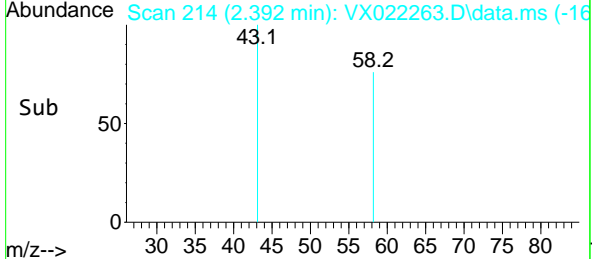
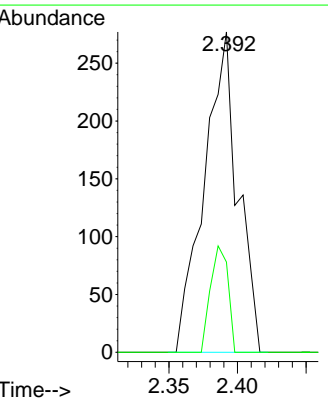
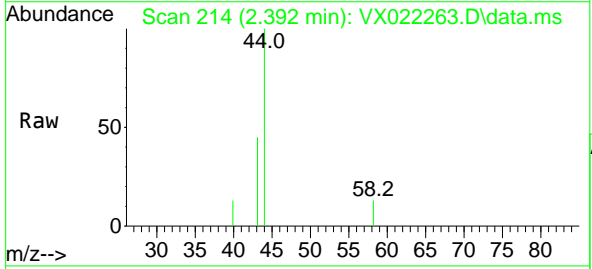
Instrument :
 MSVOA_X
ClientSampled :
 VX0529WBL02

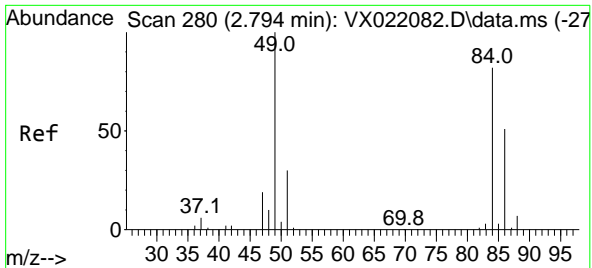
Tgt Ion: 56 Resp: 65
 Ion Ratio Lower Upper
 56 100
 55 280.0 56.4 84.6#



#16
 Acetone
 Concen: 1.03 ug/l
 RT: 2.392 min Scan# 214
 Delta R.T. -0.000 min
 Lab File: VX022263.D
 Acq: 28 May 2021 20:24

Tgt Ion: 43 Resp: 472
 Ion Ratio Lower Upper
 43 100
 58 28.2 27.8 41.8

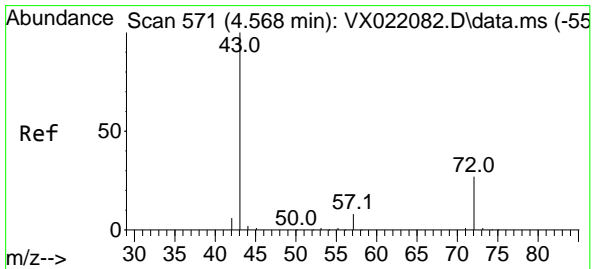
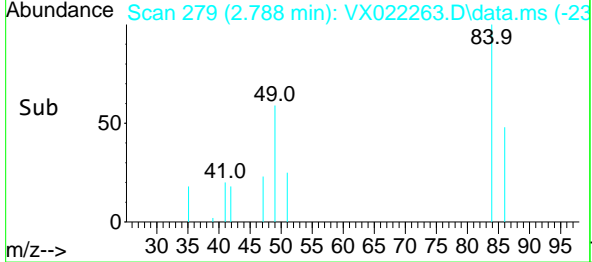
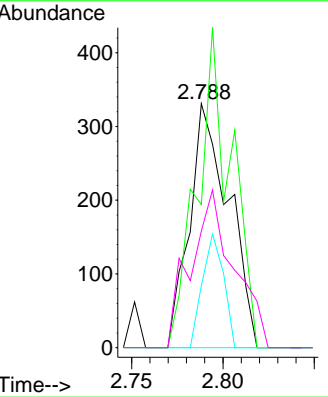
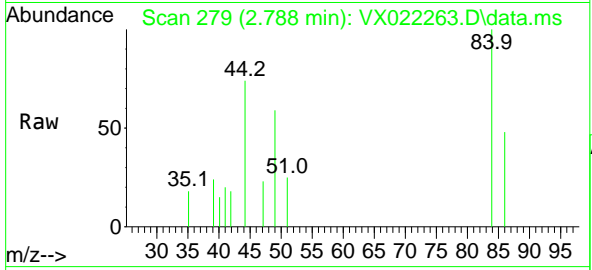




#20
 Methylene Chloride
 Concen: 0.48 ug/l
 RT: 2.788 min Scan# 279
 Delta R.T. -0.006 min
 Lab File: VX022263.D
 Acq: 28 May 2021 20:24

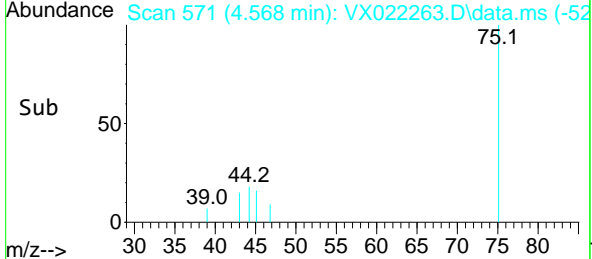
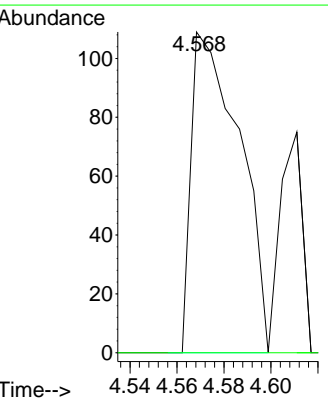
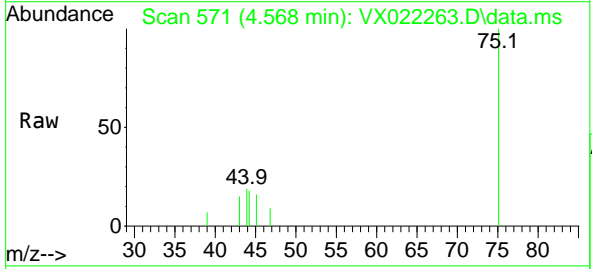
Instrument :
 MSVOA_X
 ClientSampled :
 VX0529WBL02

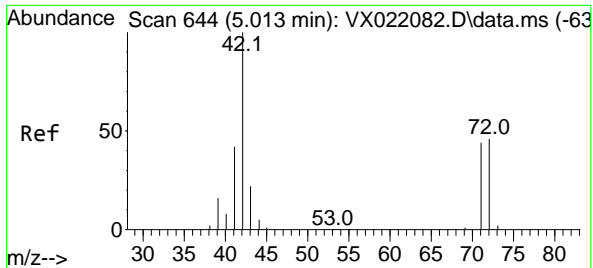
Tgt Ion	Resp	Lower	Upper
84	100		
49	58.6	88.6	132.8#
51	25.4	27.0	40.6#
86	47.7	50.3	75.5#



#25
 2-Butanone
 Concen: 0.21 ug/l
 RT: 4.568 min Scan# 571
 Delta R.T. 0.000 min
 Lab File: VX022263.D
 Acq: 28 May 2021 20:24

Tgt Ion	Resp	Lower	Upper
43	100		
72	0.0	23.7	35.5#

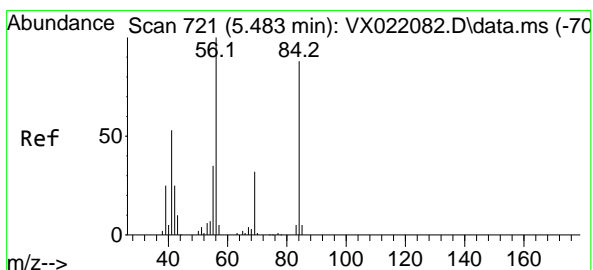
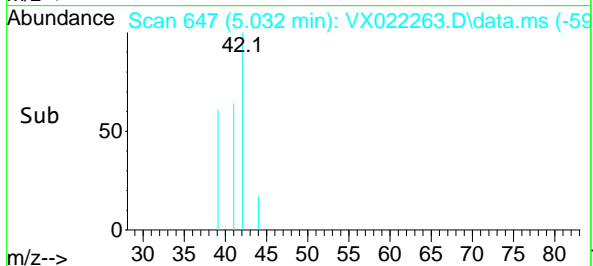
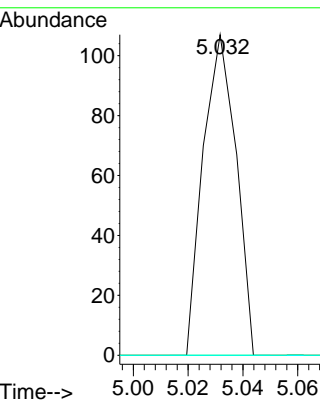
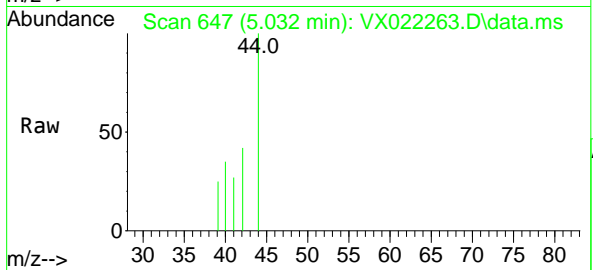




#29
 Tetrahydrofuran
 Concen: 0.20 ug/l
 RT: 5.032 min Scan# 647
 Delta R.T. 0.019 min
 Lab File: VX022263.D
 Acq: 28 May 2021 20:24

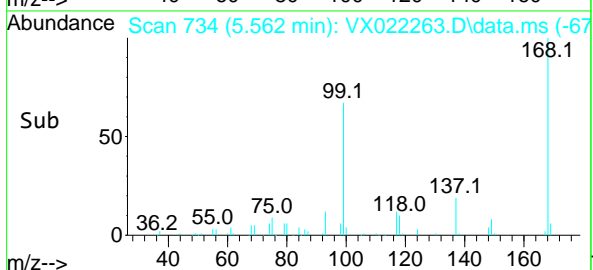
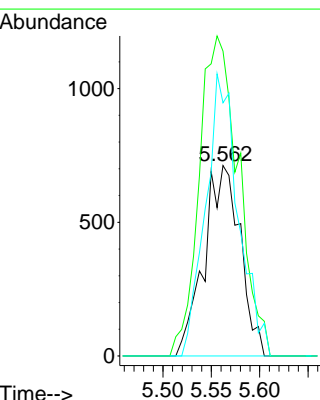
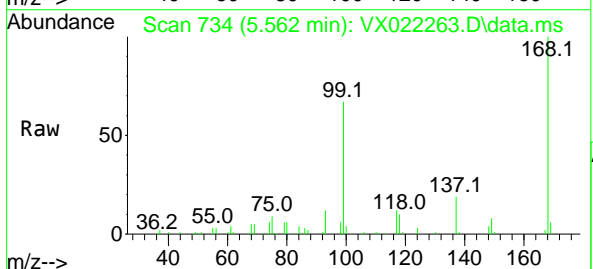
Instrument :
 MSVOA_X
 ClientSampled :
 VX0529WBL02

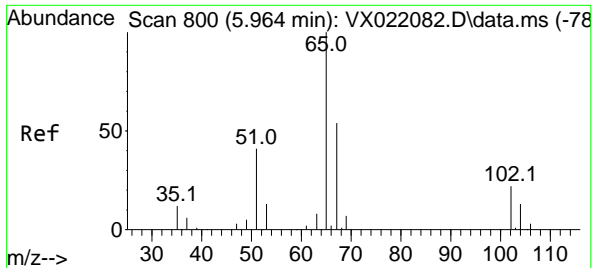
Tgt Ion	Resp	Lower	Upper
42	100		
72	0.0	41.7	62.5#
71	0.0	38.4	57.6#



#31
 Cyclohexane
 Concen: 1.39 ug/l
 RT: 5.562 min Scan# 734
 Delta R.T. 0.079 min
 Lab File: VX022263.D
 Acq: 28 May 2021 20:24

Tgt Ion	Resp	Lower	Upper
56	100		
69	160.1	25.3	37.9#
84	133.0	71.4	107.0#

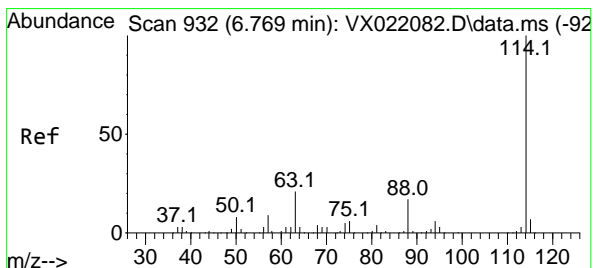
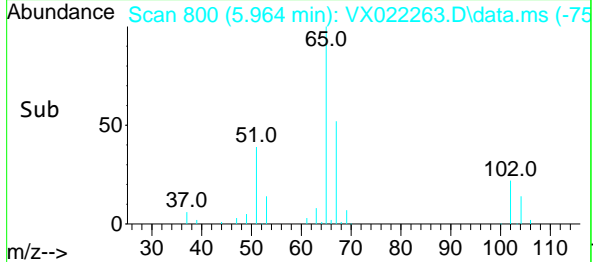
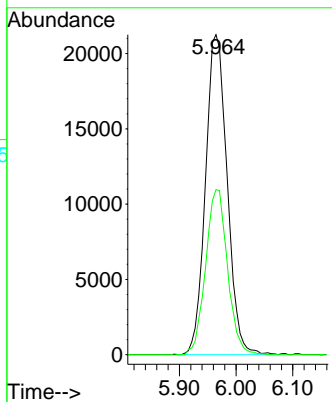
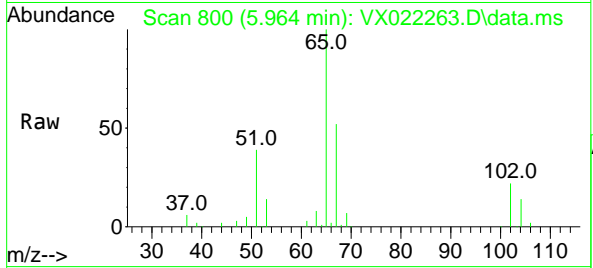




#33
 1,2-Dichloroethane-d4
 Concen: 53.48 ug/l
 RT: 5.964 min Scan# 800
 Delta R.T. 0.000 min
 Lab File: VX022263.D
 Acq: 28 May 2021 20:24

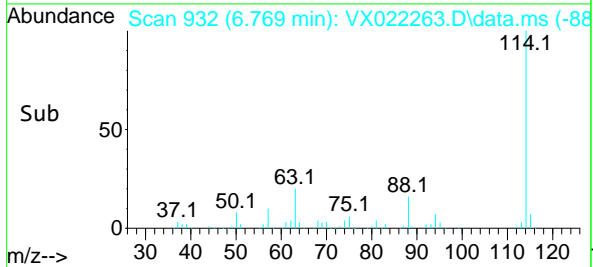
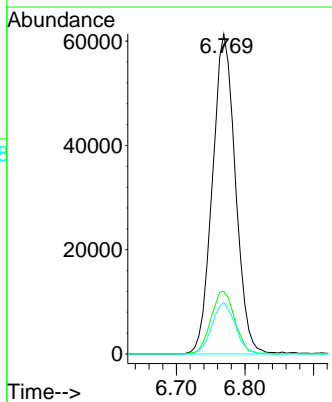
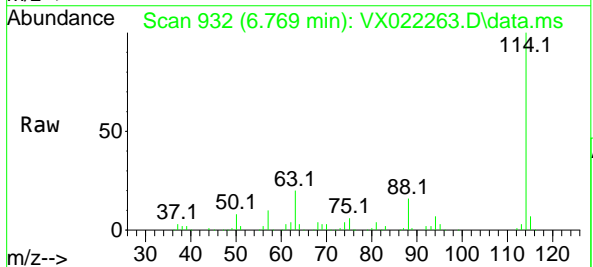
Instrument :
 MSVOA_X
 ClientSampled :
 VX0529WBL02

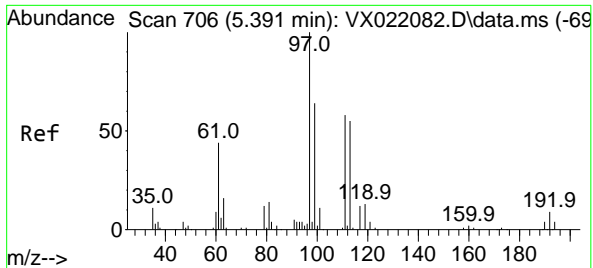
Tgt Ion: 65 Resp: 56440
 Ion Ratio Lower Upper
 65 100
 67 52.1 0.0 105.4



#34
 1,4-Difluorobenzene
 Concen: 50.00 ug/l
 RT: 6.769 min Scan# 932
 Delta R.T. 0.000 min
 Lab File: VX022263.D
 Acq: 28 May 2021 20:24

Tgt Ion:114 Resp: 142590
 Ion Ratio Lower Upper
 114 100
 63 19.6 0.0 40.8
 88 16.1 0.0 32.8

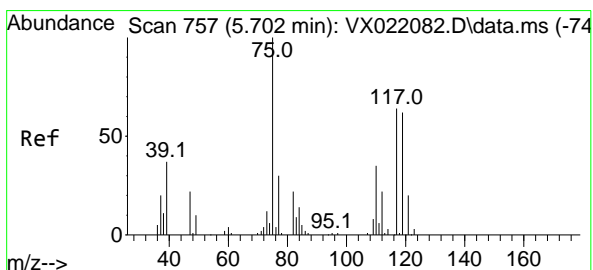
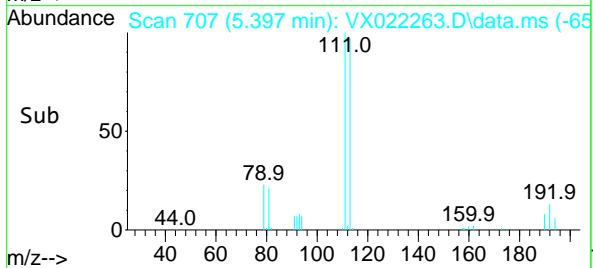
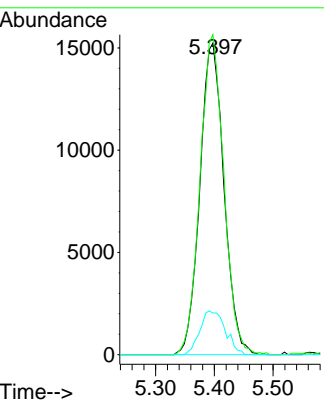
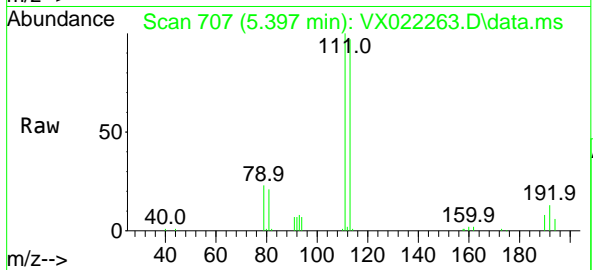




#35
 Dibromofluoromethane
 Concen: 48.04 ug/l
 RT: 5.397 min Scan# 707
 Delta R.T. 0.006 min
 Lab File: VX022263.D
 Acq: 28 May 2021 20:24

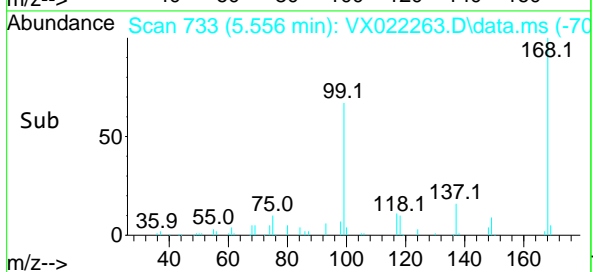
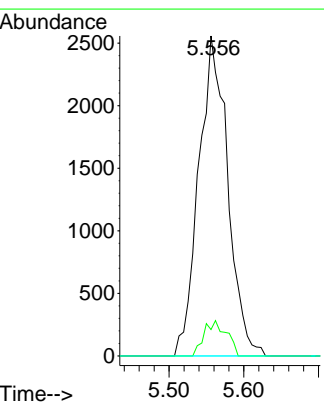
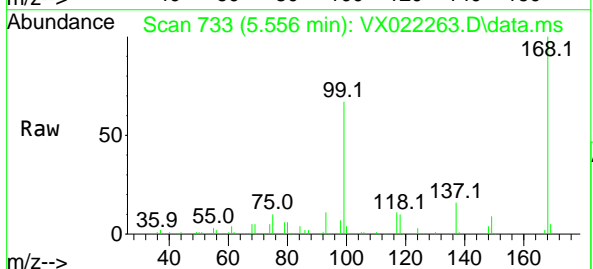
Instrument :
 MSVOA_X
ClientSampled :
 VX0529WBL02

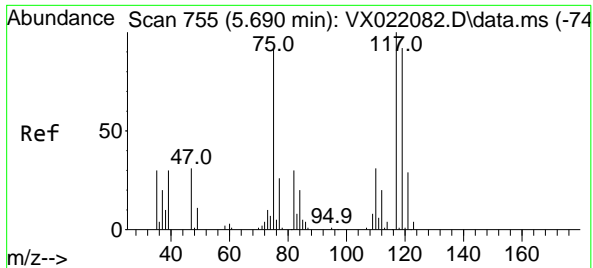
Tgt Ion	Resp	Lower	Upper
113	43436		
113	100		
111	101.7	81.9	122.9
192	14.9	16.7	25.1#



#36
 1,1-Dichloropropene
 Concen: 5.23 ug/l
 RT: 5.556 min Scan# 733
 Delta R.T. -0.146 min
 Lab File: VX022263.D
 Acq: 28 May 2021 20:24

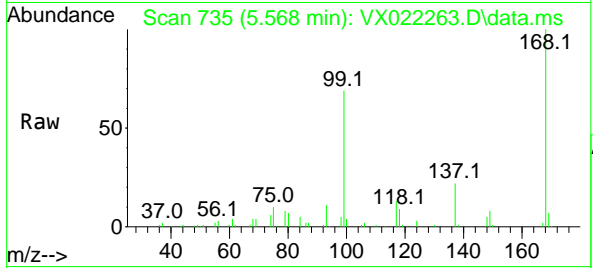
Tgt Ion	Resp	Lower	Upper
75	6902		
75	100		
110	8.5	18.1	54.4#
77	0.0	25.3	37.9#



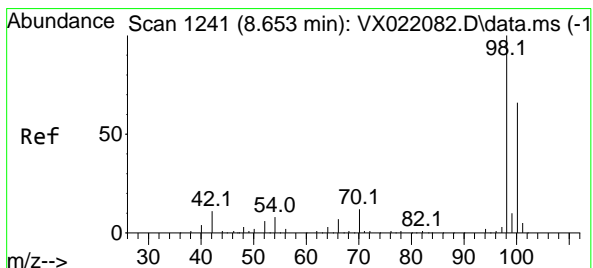
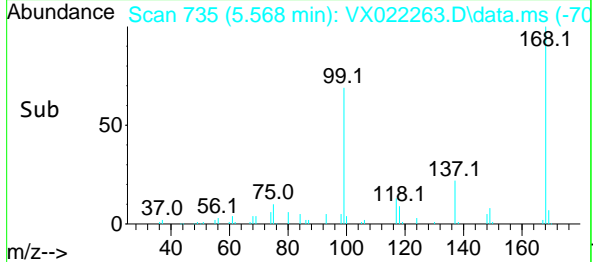
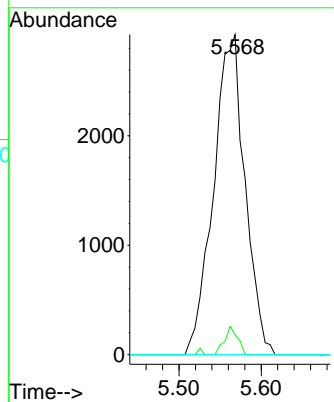


#38
 Carbon Tetrachloride
 Concen: 6.02 ug/l
 RT: 5.568 min Scan# 735
 Delta R.T. -0.122 min
 Lab File: VX022263.D
 Acq: 28 May 2021 20:24

Instrument :
 MSVOA_X
 ClientSampled :
 VX0529WBL02

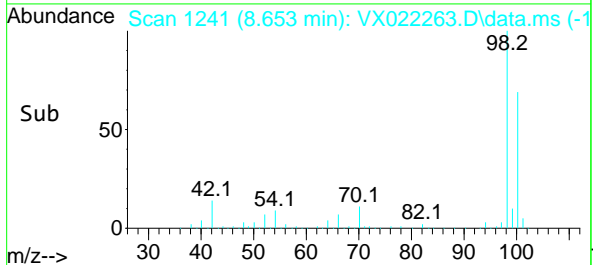
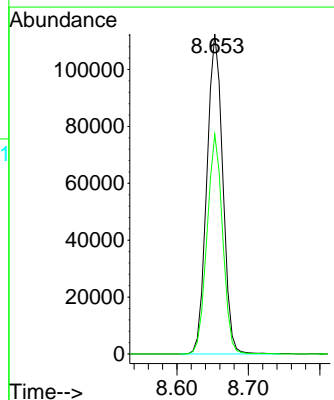
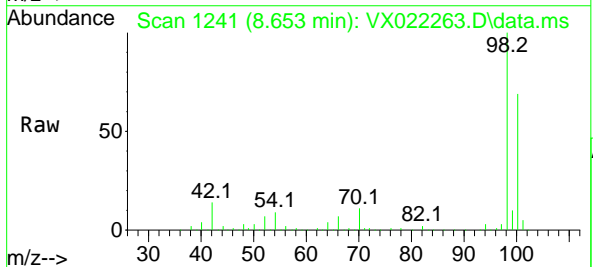


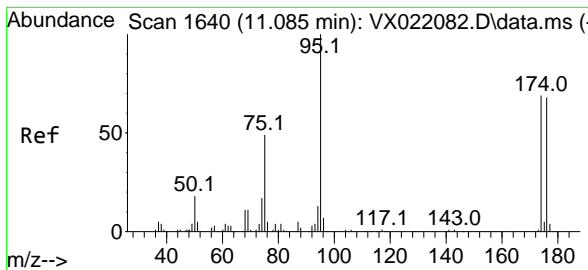
Tgt Ion:117 Resp: 7771
 Ion Ratio Lower Upper
 117 100
 119 6.2 76.2 114.2#
 121 0.0 24.8 37.2#



#50
 Toluene-d8
 Concen: 49.91 ug/l
 RT: 8.653 min Scan# 1241
 Delta R.T. -0.000 min
 Lab File: VX022263.D
 Acq: 28 May 2021 20:24

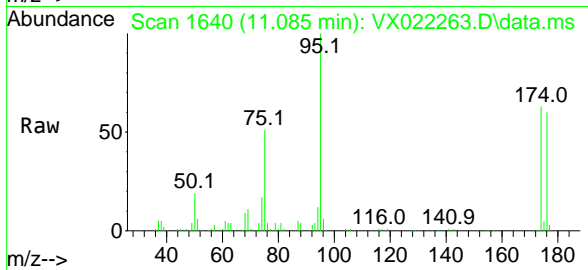
Tgt Ion: 98 Resp: 173847
 Ion Ratio Lower Upper
 98 100
 100 67.2 51.9 77.9



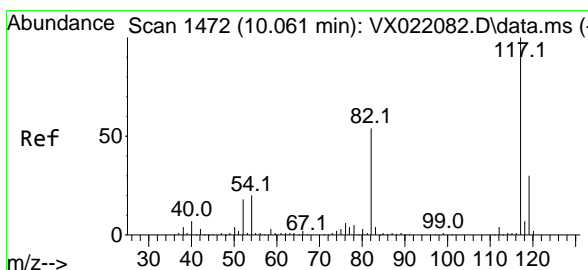
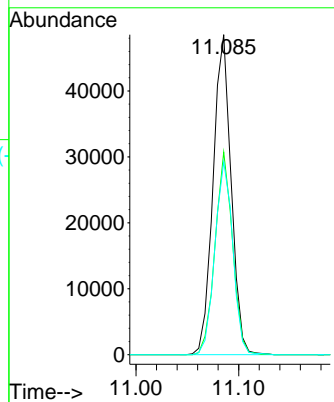
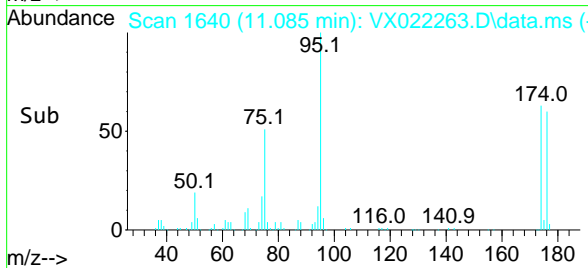


#62
 4-Bromofluorobenzene
 Concen: 45.92 ug/l
 RT: 11.085 min Scan# 1640
 Delta R.T. 0.000 min
 Lab File: VX022263.D
 Acq: 28 May 2021 20:24

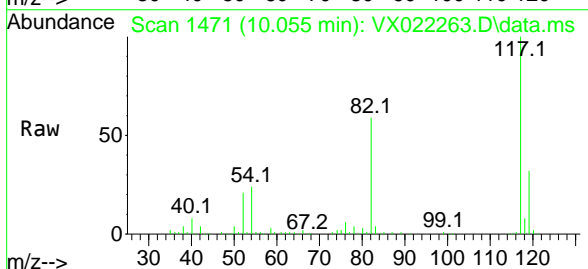
Instrument :
 MSVOA_X
ClientSampled :
 VX0529WBL02



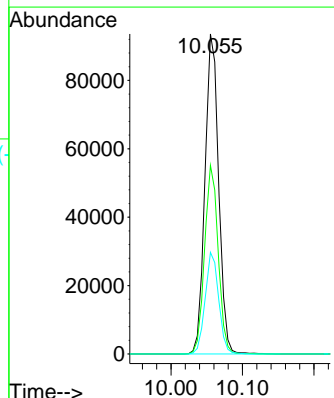
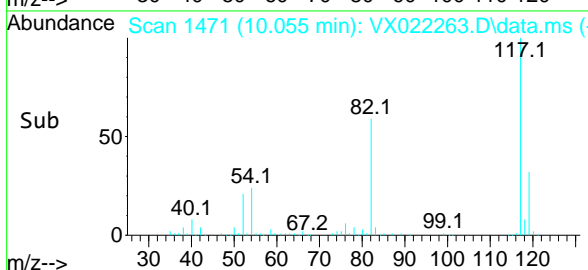
Tgt Ion: 95 Resp: 59121
 Ion Ratio Lower Upper
 95 100
 174 61.3 0.0 154.6
 176 59.8 0.0 155.8

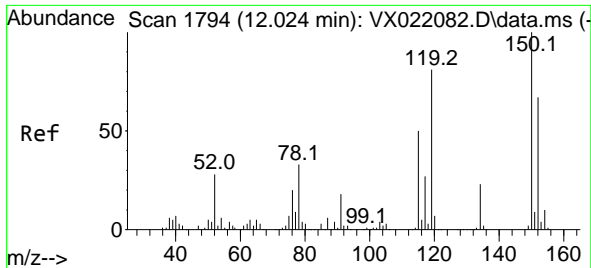


#63
 Chlorobenzene-d5
 Concen: 50.00 ug/l
 RT: 10.055 min Scan# 1471
 Delta R.T. -0.006 min
 Lab File: VX022263.D
 Acq: 28 May 2021 20:24



Tgt Ion: 117 Resp: 124582
 Ion Ratio Lower Upper
 117 100
 82 59.0 47.4 71.2
 119 31.7 26.6 39.8

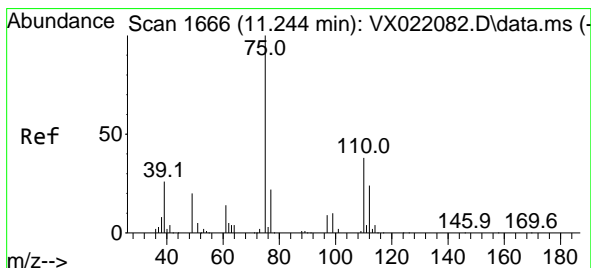
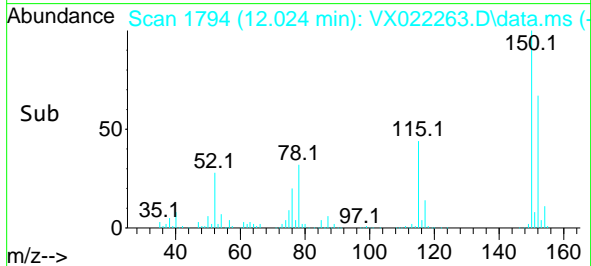
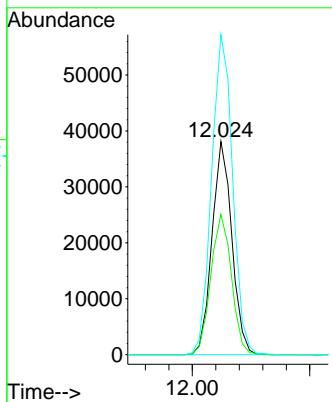
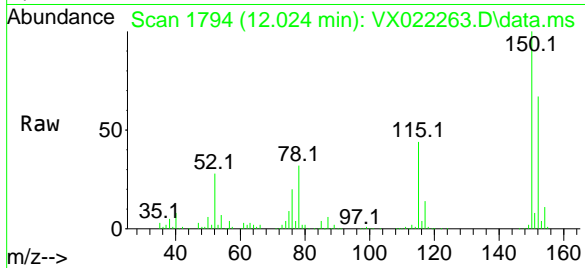




#72
 1,4-Dichlorobenzene-d4
 Concen: 50.00 ug/l
 RT: 12.024 min Scan# 1794
 Delta R.T. 0.000 min
 Lab File: VX022263.D
 Acq: 28 May 2021 20:24

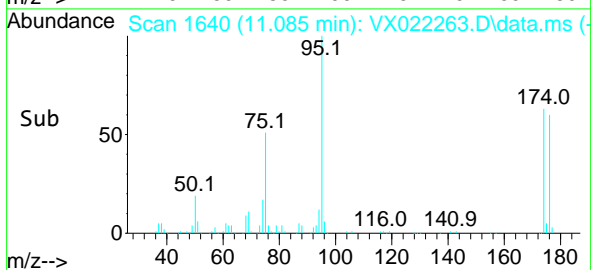
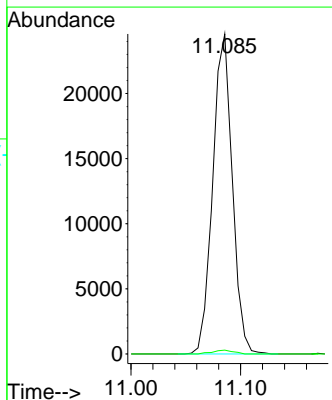
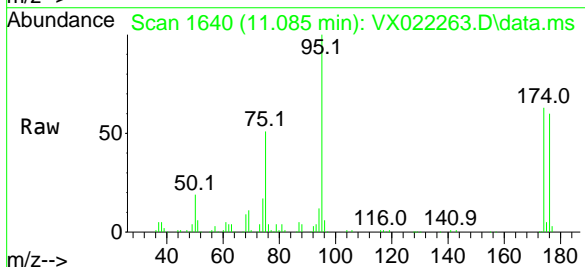
Instrument :
 MSVOA_X
 ClientSampled :
 VX0529WBL02

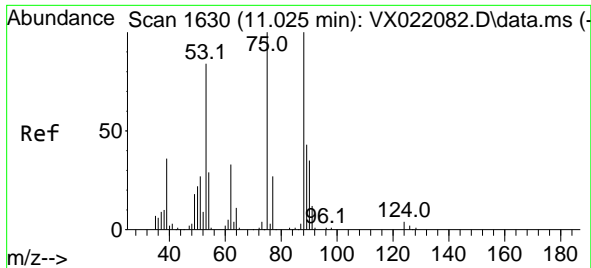
Tgt Ion	Resp	Lower	Upper
152	44832		
100	100		
115	68.1	41.1	123.3
150	158.6	0.0	349.0



#76
 1,2,3-Trichloropropane
 Concen: 27.54 ug/l
 RT: 11.085 min Scan# 1640
 Delta R.T. -0.159 min
 Lab File: VX022263.D
 Acq: 28 May 2021 20:24

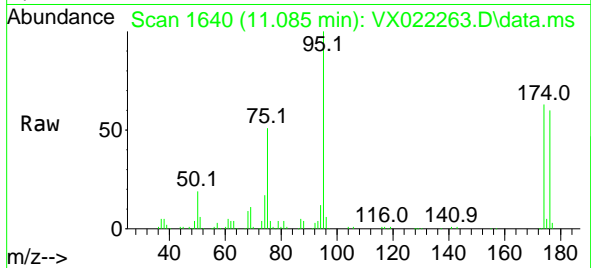
Tgt Ion	Resp	Lower	Upper
75	30464		
100	100		
77	1.3	19.1	57.5#





#81
 trans-1,4-Dichloro-2-butene
 Concen: 65.26 ug/l
 RT: 11.085 min Scan# 1640
 Delta R.T. 0.060 min
 Lab File: VX022263.D
 Acq: 28 May 2021 20:24

Instrument :
 MSVOA_X
 ClientSampled :
 VX0529WBL02



Tgt Ion: 75 Resp: 30464
 Ion Ratio Lower Upper
 75 100
 53 0.0 74.5 111.7#
 89 0.0 37.9 56.9#

