

Data Path : Z:\voasrv\HPCHEM1\MSVOA_X\Data\VX053024\
 Data File : VX041686.D
 Acq On : 30 May 2024 11:35
 Operator : JC/MD
 Sample : P2621-02
 Misc : 5.0mL/MSVOA_X/WATER
 ALS Vial : 6 Sample Multiplier: 1

Instrument :
 MSVOA_X
ClientSampleId :
 240522007-01-TRIP-BLANK

Quant Time: May 31 05:28:46 2024
 Quant Method : Z:\voasrv\HPCHEM1\MSVOA_X\Method\624X051524W.M
 Quant Title : METHOD 624 VOLATILE ORGANIC ANALYSIS
 QLast Update : Thu May 16 05:13:13 2024
 Response via : Initial Calibration

Compound	R.T.	QIon	Response	Conc	Units	Dev(Min)
Internal Standards						
1) Bromochloromethane	4.897	128	24548	30.000	ug/l	0.00
28) 1,4-Difluorobenzene	6.757	114	130357	30.000	ug/l	0.00
57) Chlorobenzene-d5	10.055	117	116153	30.000	ug/l	0.00
System Monitoring Compounds						
27) 1,2-Dichloroethane-d4	5.952	65	57077	29.526	ug/l	0.00
Spiked Amount	30.000	Range	91 - 110	Recovery	=	98.433%
60) 4-Bromofluorobenzene	11.079	95	50187	27.678	ug/l	0.00
Spiked Amount	30.000	Range	63 - 112	Recovery	=	92.267%
63) Toluene-d8	8.647	98	145840	29.291	ug/l	0.00
Spiked Amount	30.000	Range	91 - 112	Recovery	=	97.633%

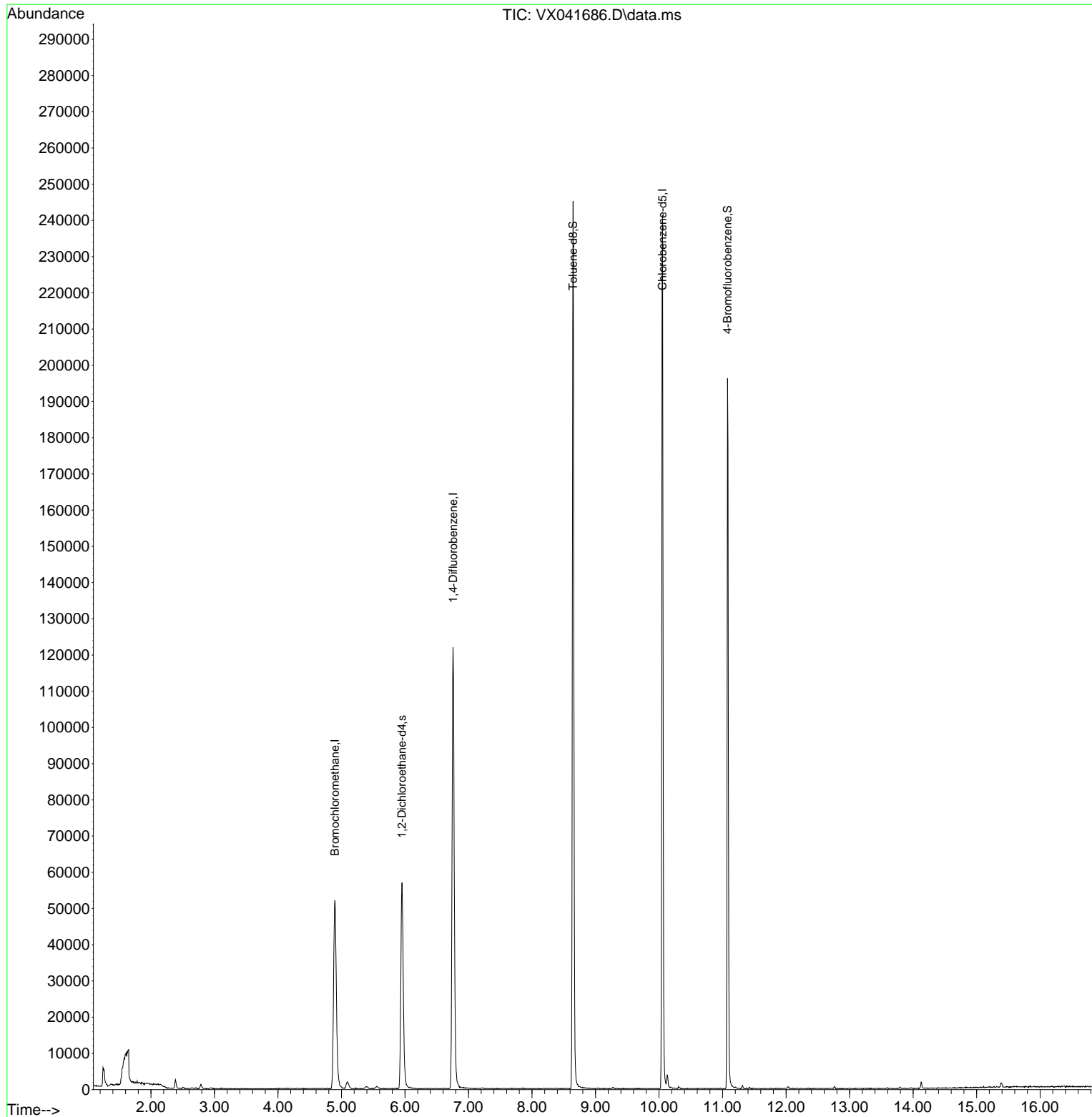
Target Compounds Qvalue

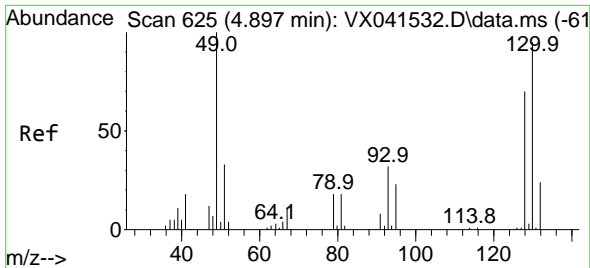
(#) = qualifier out of range (m) = manual integration (+) = signals summed

Data Path : Z:\voasrv\HPCHEM1\MSVOA_X\Data\VX053024\
 Data File : VX041686.D
 Acq On : 30 May 2024 11:35
 Operator : JC/MD
 Sample : P2621-02
 Misc : 5.0mL/MSVOA_X/WATER
 ALS Vial : 6 Sample Multiplier: 1

Instrument :
 MSVOA_X
 ClientSampleId :
 240522007-01-TRIP-BLANK

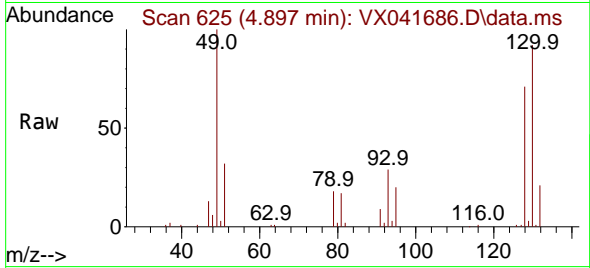
Quant Time: May 31 05:28:46 2024
 Quant Method : Z:\voasrv\HPCHEM1\MSVOA_X\Method\624X051524W.M
 Quant Title : METHOD 624 VOLATILE ORGANIC ANALYSIS
 QLast Update : Thu May 16 05:13:13 2024
 Response via : Initial Calibration





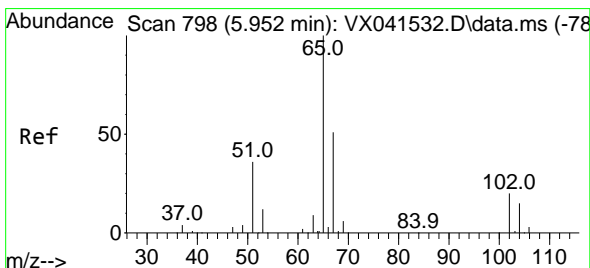
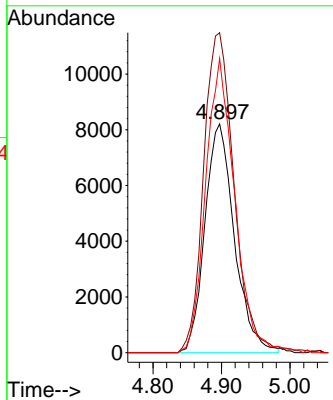
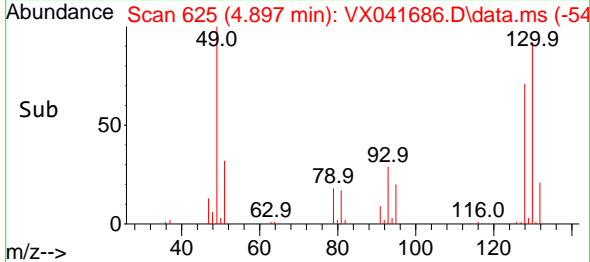
#1
 Bromochloromethane
 Concen: 30.000 ug/l
 RT: 4.897 min Scan# 61
 Delta R.T. 0.000 min
 Lab File: VX041686.D
 Acq: 30 May 2024 11:35

Instrument : MSVOA_X
 ClientSampleId : 240522007-01-TRIP-BLANK

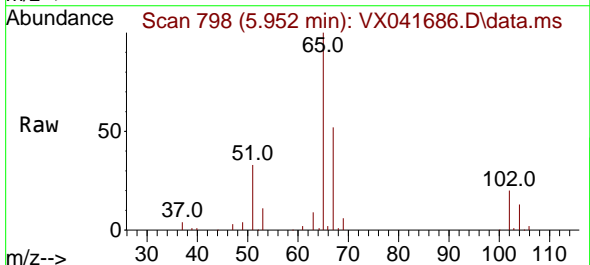


Tgt Ion:128 Resp: 24548

Ion	Ratio	Lower	Upper
128	100		
49	144.4	0.0	361.5
130	125.8	0.0	324.3

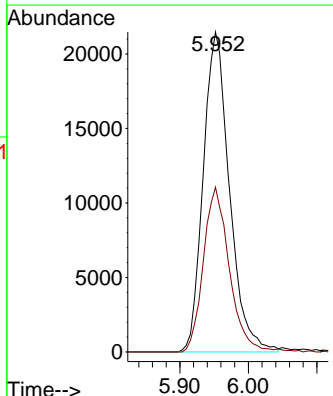
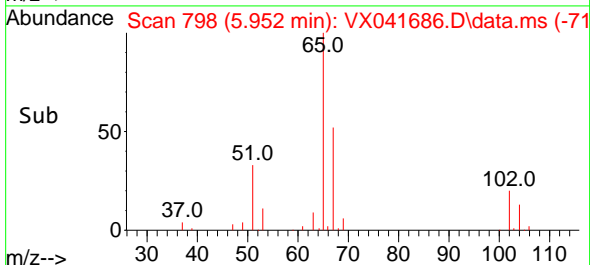


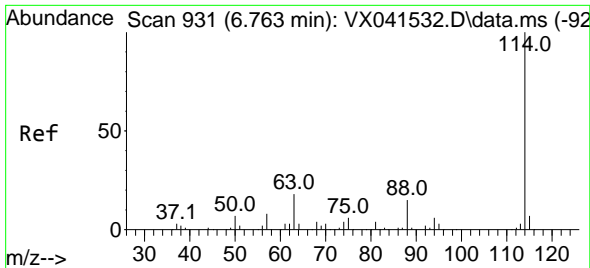
#27
 1,2-Dichloroethane-d4
 Concen: 29.526 ug/l
 RT: 5.952 min Scan# 798
 Delta R.T. -0.000 min
 Lab File: VX041686.D
 Acq: 30 May 2024 11:35



Tgt Ion: 65 Resp: 57077

Ion	Ratio	Lower	Upper
65	100		
67	50.7	40.8	61.2



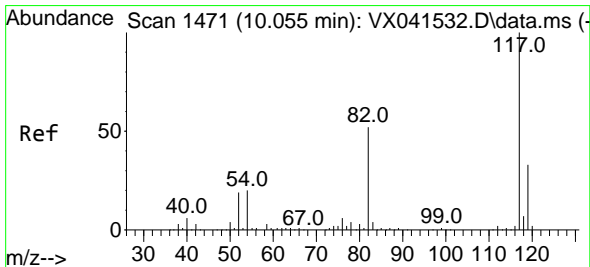
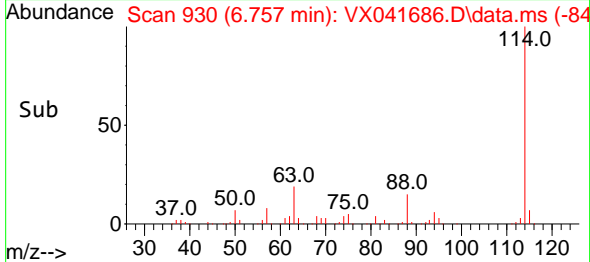
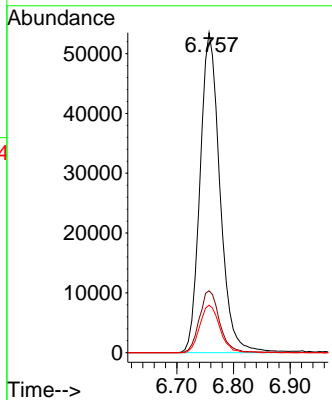
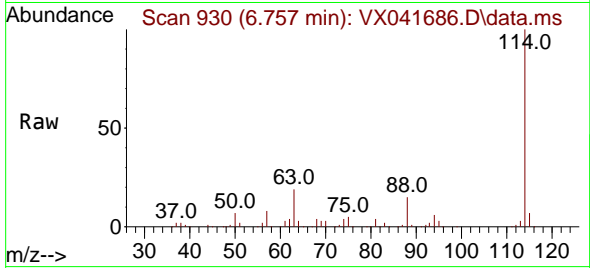


#28
 1,4-Difluorobenzene
 Concen: 30.000 ug/l
 RT: 6.757 min Scan# 91
 Delta R.T. -0.006 min
 Lab File: VX041686.D
 Acq: 30 May 2024 11:35

Instrument : MSVOA_X
 ClientSampleId : 240522007-01-TRIP-BLANK

Tgt Ion:114 Resp: 130357

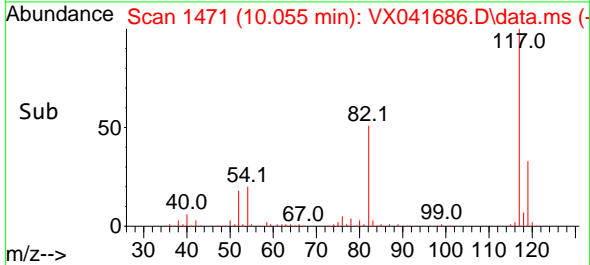
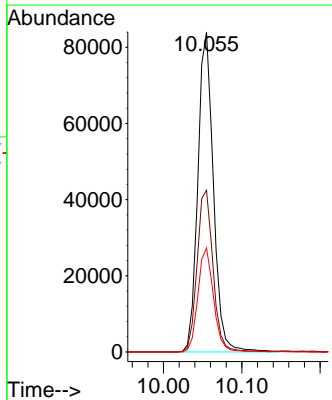
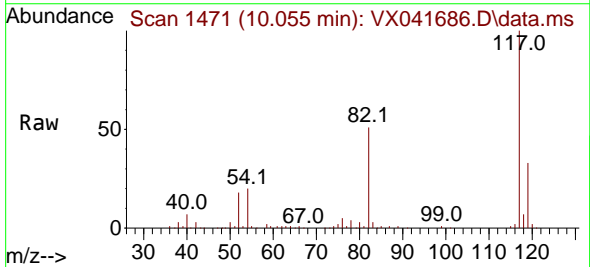
Ion	Ratio	Lower	Upper
114	100		
63	19.5	15.4	23.0
88	14.8	12.2	18.2

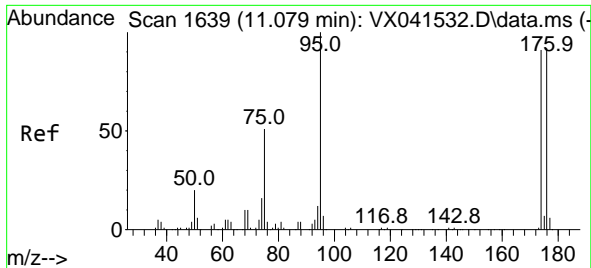


#57
 Chlorobenzene-d5
 Concen: 30.000 ug/l
 RT: 10.055 min Scan# 1471
 Delta R.T. -0.000 min
 Lab File: VX041686.D
 Acq: 30 May 2024 11:35

Tgt Ion:117 Resp: 116153

Ion	Ratio	Lower	Upper
117	100		
82	51.8	41.7	62.5
119	32.4	25.7	38.5



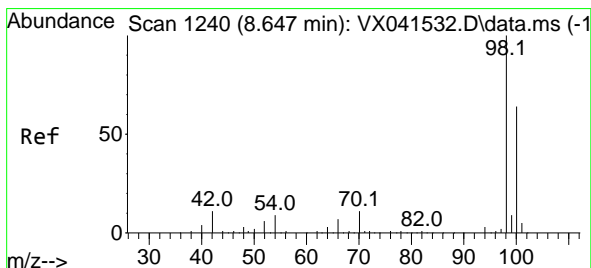
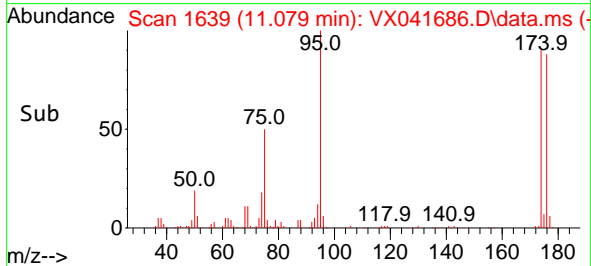
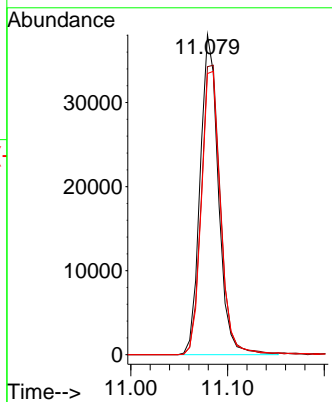
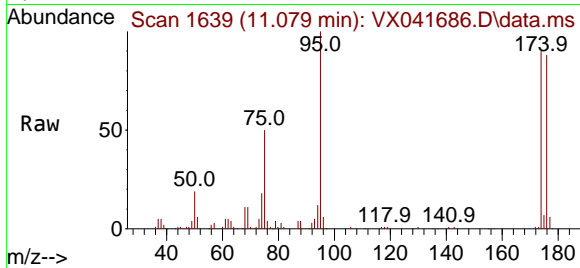


#60
 4-Bromofluorobenzene
 Concen: 27.678 ug/l
 RT: 11.079 min Scan# 1639
 Delta R.T. -0.000 min
 Lab File: VX041686.D
 Acq: 30 May 2024 11:35

Instrument : MSVOA_X
 ClientSampleId : 240522007-01-TRIP-BLANK

Tgt Ion: 95 Resp: 50187

Ion	Ratio	Lower	Upper
95	100		
174	95.3	76.6	115.0
176	92.6	75.4	113.0



#63
 Toluene-d8
 Concen: 29.291 ug/l
 RT: 8.647 min Scan# 1240
 Delta R.T. -0.000 min
 Lab File: VX041686.D
 Acq: 30 May 2024 11:35

Tgt Ion: 98 Resp: 145840

Ion	Ratio	Lower	Upper
98	100		
100	65.5	53.1	79.7

