

Data Path : Z:\VOASRV\HPCHEM1\MSVOA X\DATA\VX053119\
 Data File : VX010019.D
 Acq On : 01 Jun 2019 05:39
 Operator : JC/SP
 Sample : K3129-09
 Misc : 5.0mL/MSVOA X/WATER
 ALS Vial : 51 Sample Multiplier: 1

Instrument :
 MSVOA_X
 ClientSampleId :
 LF012RW164-190529

Quant Time: Jun 01 06:20:28 2019
 Quant Method : Z:\VOASRV\HPCHEM1\MSVOA_X\METHOD\82X052819W.M
 Quant Title : SW846 8260
 QLast Update : Wed May 29 04:00:56 2019
 Response via : Initial Calibration

Internal Standards	R.T.	QIon	Response	Conc	Units	Dev(Min)
1) Pentafluorobenzene	5.67	168	170949	50.00	ug/l	0.00
34) 1,4-Difluorobenzene	6.86	114	269277	50.00	ug/l	0.00
63) Chlorobenzene-d5	10.11	117	246084	50.00	ug/l	0.00
72) 1,4-Dichlorobenzene-d4	12.08	152	109349	50.00	ug/l	0.00

System Monitoring Compounds

33) 1,2-Dichloroethane-d4	6.06	65	113490	47.00	ug/l	0.00
Spiked Amount	50.000		Recovery	=	94.00%	
35) Dibromofluoromethane	5.50	113	84395	49.85	ug/l	0.00
Spiked Amount	50.000		Recovery	=	99.70%	
50) Toluene-d8	8.71	98	342672	49.85	ug/l	0.00
Spiked Amount	50.000		Recovery	=	99.70%	
62) 4-Bromofluorobenzene	11.13	95	117219	47.47	ug/l	0.00
Spiked Amount	50.000		Recovery	=	94.94%	

Target Compounds

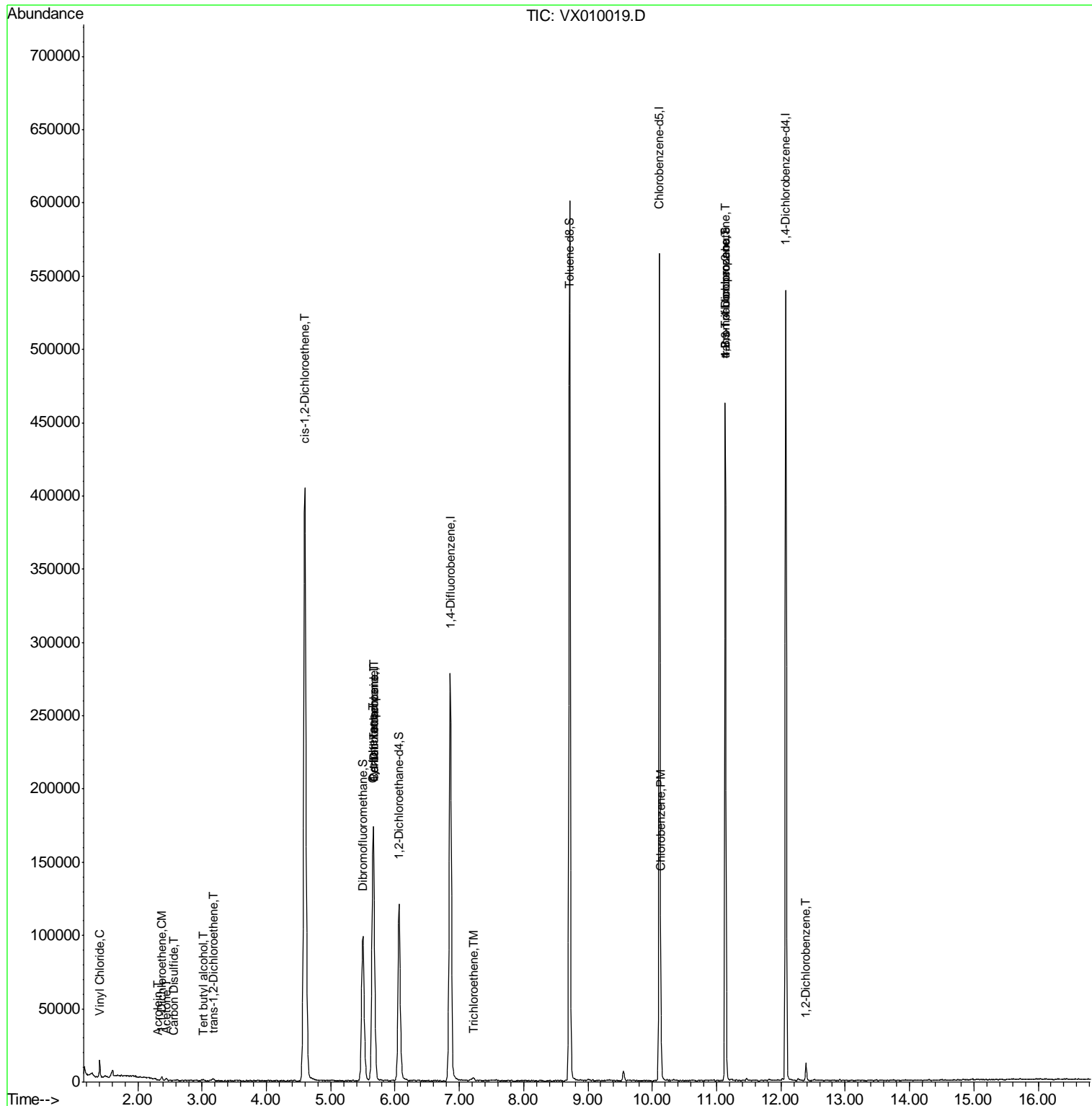
						Qvalue
4) Vinyl Chloride	1.41	62	8060	3.184	ug/l	91
11) Tert butyl alcohol	3.02	59	336	0.565	ug/l #	73
12) 1,1-Dichloroethene	2.37	96	673	0.389	ug/l	91
13) Acrolein	2.31	56	46	21.197	ug/l #	1
16) Acetone	2.45	43	1203	0.862	ug/l #	82
17) Carbon Disulfide	2.57	76	396	0.460	ug/l #	76
21) trans-1,2-Dichloroethene	3.17	96	544	0.282	ug/l	95
27) cis-1,2-Dichloroethene	4.60	96	249763	112.324	ug/l	87
31) Cyclohexane	5.65	56	3932	1.070	ug/l #	1
36) 1,1-Dichloropropene	5.66	75	13206	4.834	ug/l #	50
38) Carbon Tetrachloride	5.66	117	15543	6.583	ug/l #	16
44) Trichloroethene	7.22	130	604	0.307	ug/l	57
65) Chlorobenzene	10.13	112	7989	1.551	ug/l	96
76) 1,2,3-Trichloropropane	11.13	75	60074	22.974	ug/l #	34
81) trans-1,4-Dichloro-2-buten	11.13	75	60074	56.841	ug/l #	10
91) 1,2-Dichlorobenzene	12.39	146	3456	0.958	ug/l	99

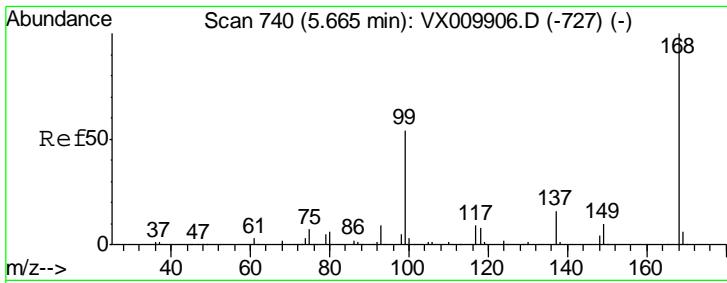
(#) = qualifier out of range (m) = manual integration (+) = signals summed

Data Path : Z:\VOASRV\HPCHEM1\MSVOA X\DATA\VX053119\
 Data File : VX010019.D
 Acq On : 01 Jun 2019 05:39
 Operator : JC/SP
 Sample : K3129-09
 Misc : 5.0mL/MSVOA X/WATER
 ALS Vial : 51 Sample Multiplier: 1

Instrument :
 MSVOA_X
 ClientSampleID :
 LF012RW164-190529

Quant Time: Jun 01 06:20:28 2019
 Quant Method : Z:\VOASRV\HPCHEM1\MSVOA_X\METHOD\82X052819W.M
 Quant Title : SW846 8260
 QLast Update : Wed May 29 04:00:56 2019
 Response via : Initial Calibration

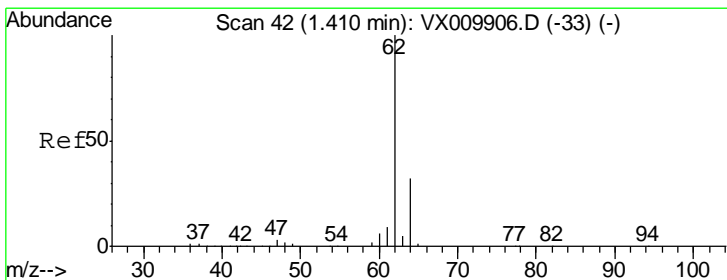
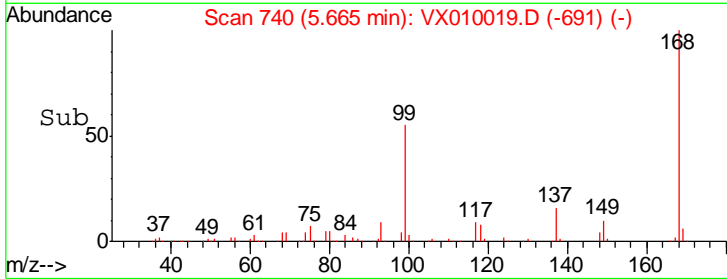
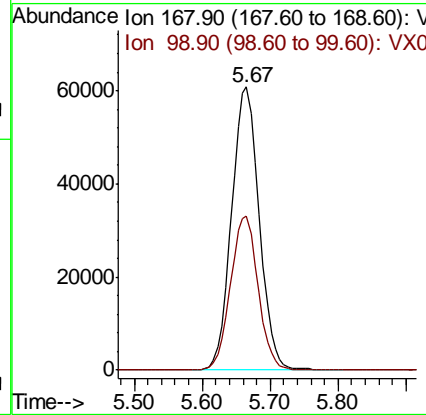
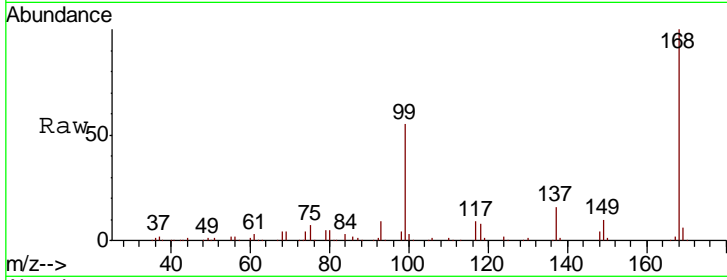




#1
 Pentafluorobenzene
 Concen: 50.000 ug/l
 RT: 5.67 min Scan# 740
 Delta R.T. 0.00 min
 Lab File: VX010019.D
 Acq: 01 Jun 2019 05:39

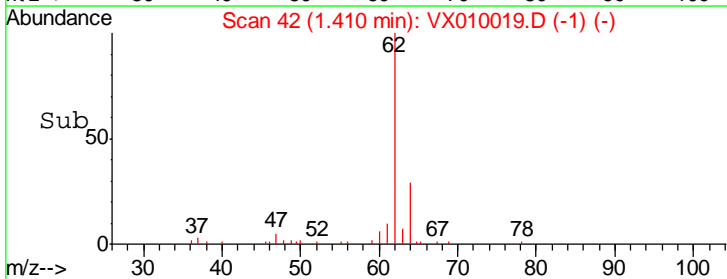
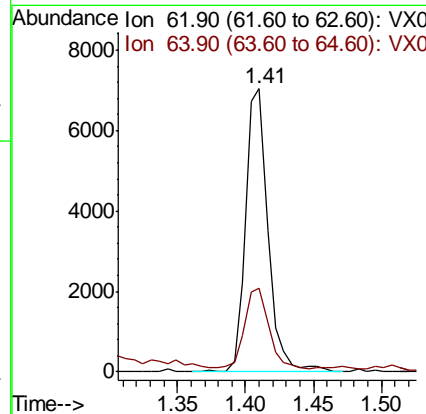
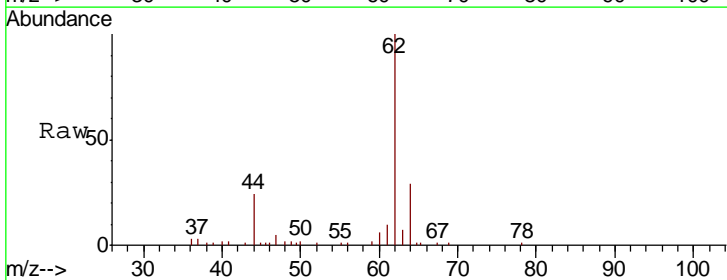
Instrument :
 MSVOA_X
 ClientSampleID :
 LF012RW164-190529

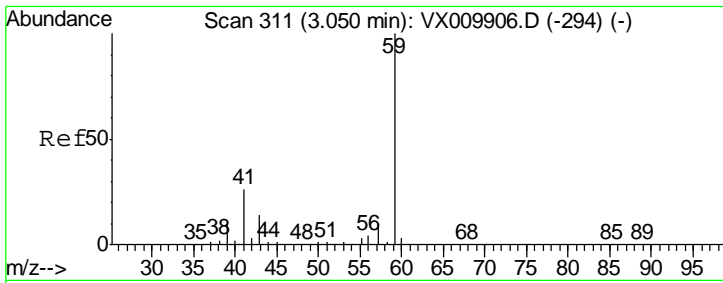
Tot Ion: 168 Resp: 170949
 Ion Ratio Lower Upper
 168 100
 99 54.5 43.0 64.6



#4
 Vinyl Chloride
 Concen: 3.184 ug/l
 RT: 1.41 min Scan# 42
 Delta R.T. 0.00 min
 Lab File: VX010019.D
 Acq: 01 Jun 2019 05:39

Tgt Ion: 62 Resp: 8060
 Ion Ratio Lower Upper
 62 100
 64 27.1 25.7 38.5

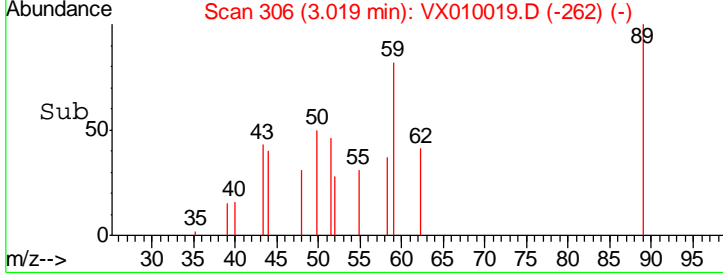
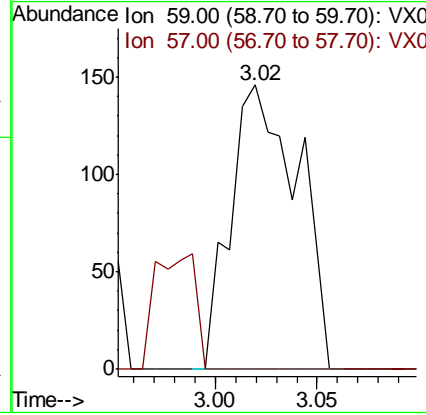
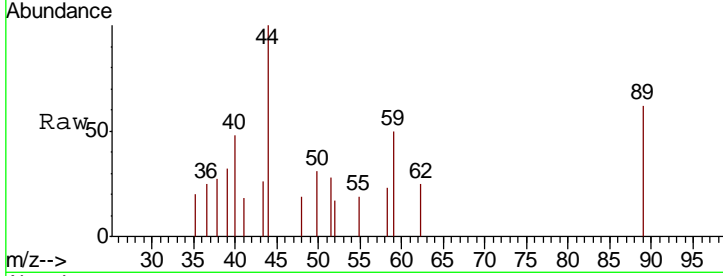




#11
 Tert butyl alcohol
 Concen: 0.565 ug/l
 RT: 3.02 min Scan# 306
 Delta R.T. -0.03 min
 Lab File: VX010019.D
 Acq: 01 Jun 2019 05:39

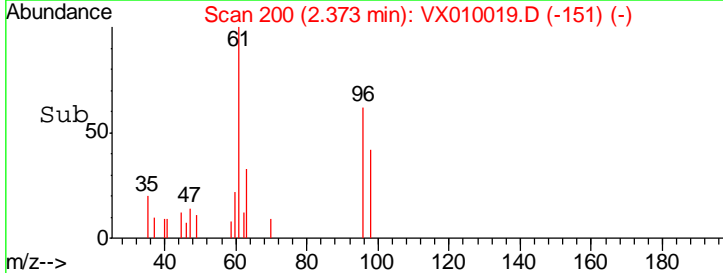
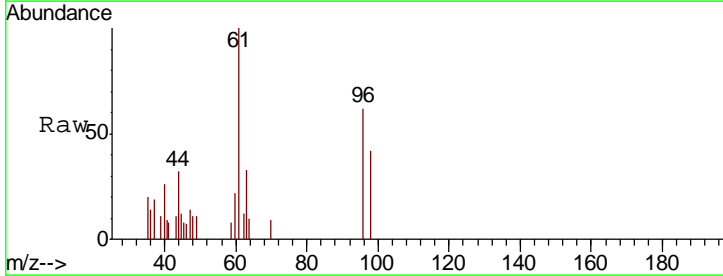
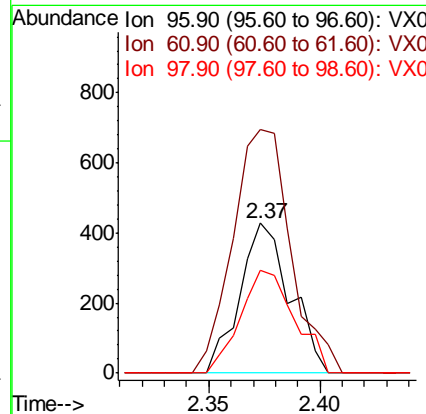
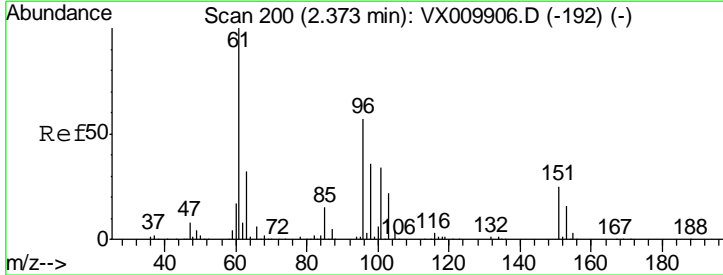
Instrument :
 MSVOA_X
ClientSampled :
 LF012RW164-190529

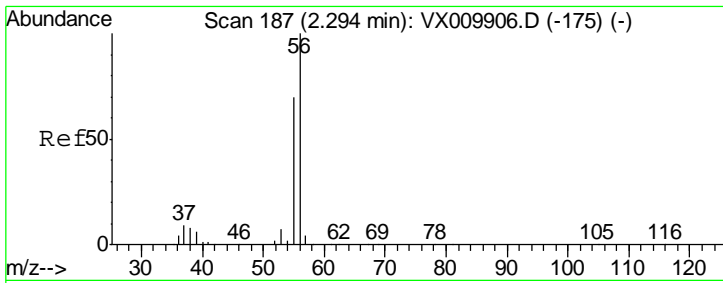
Tgt Ion	Resp	Lower	Upper
59	336		
57	0.0	8.2	12.2#



#12
 1,1-Dichloroethene
 Concen: 0.389 ug/l
 RT: 2.37 min Scan# 200
 Delta R.T. 0.00 min
 Lab File: VX010019.D
 Acq: 01 Jun 2019 05:39

Tgt Ion	Resp	Lower	Upper
96	673		
61	162.4	140.7	211.1
98	68.2	50.1	75.1

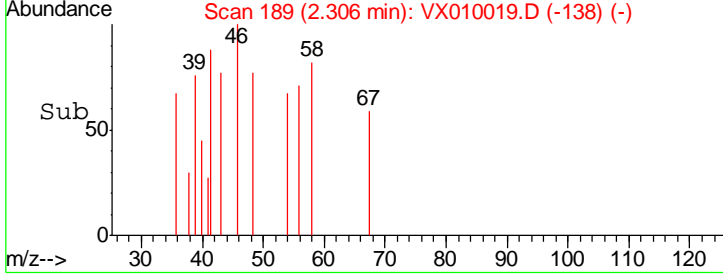
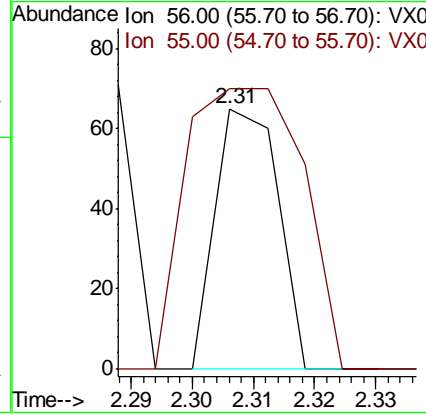
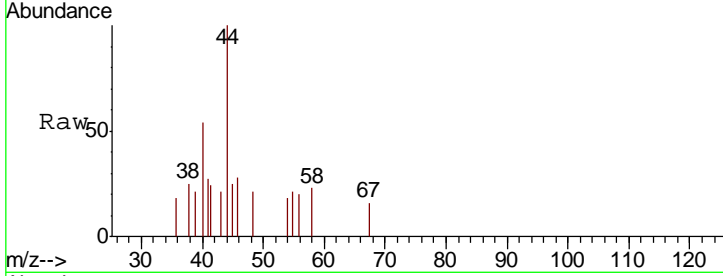




#13
 Acrolein
 Concen: 21.197 ug/l
 RT: 2.31 min Scan# 189
 Delta R.T. 0.01 min
 Lab File: VX010019.D
 Acq: 01 Jun 2019 05:39

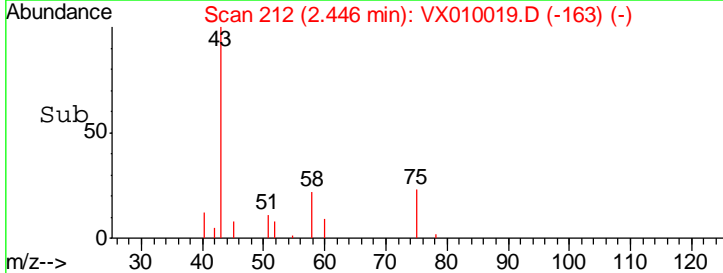
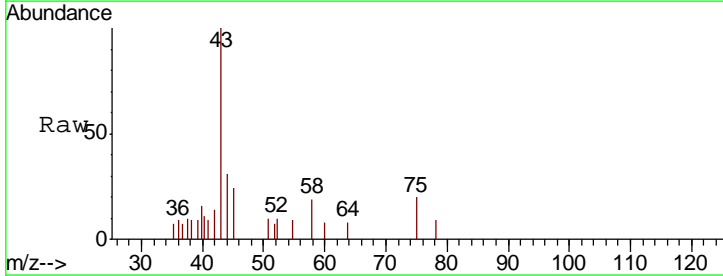
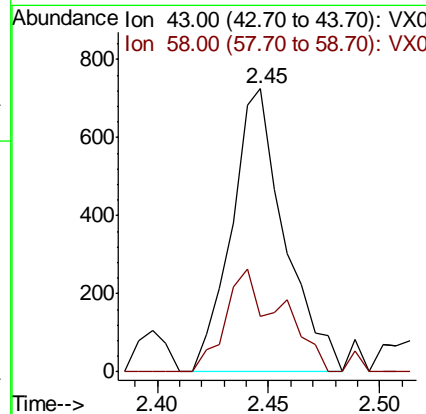
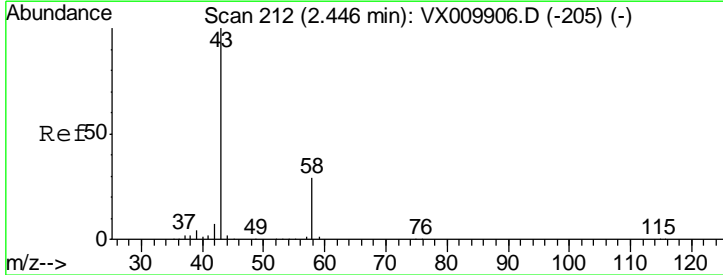
Instrument :
 MSVOA_X
ClientSampled :
 LF012RW164-190529

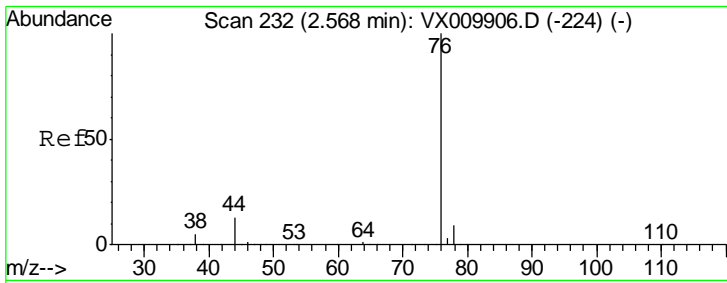
Tgt Ion: 56 Resp: 46
 Ion Ratio Lower Upper
 56 100
 55 202.2 57.0 85.4#



#16
 Acetone
 Concen: 0.862 ug/l
 RT: 2.45 min Scan# 212
 Delta R.T. 0.00 min
 Lab File: VX010019.D
 Acq: 01 Jun 2019 05:39

Tgt Ion: 43 Resp: 1203
 Ion Ratio Lower Upper
 43 100
 58 19.4 23.2 34.8#

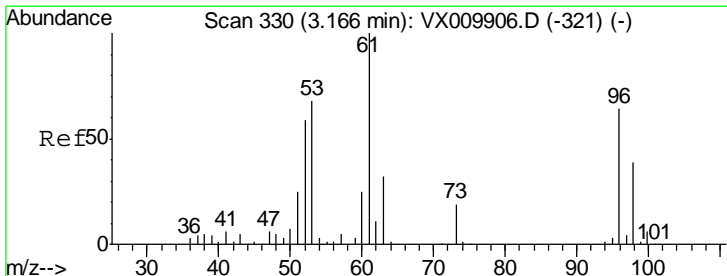
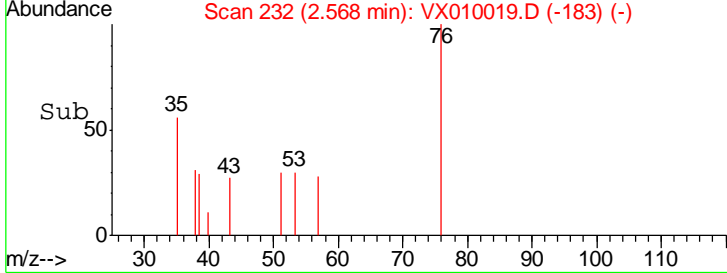
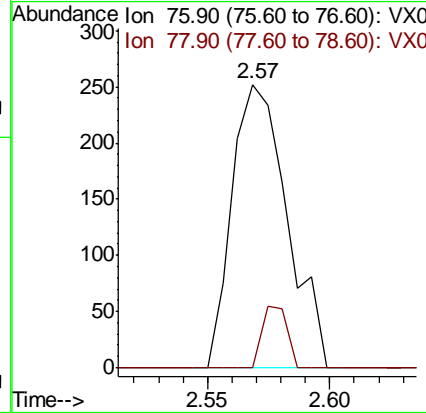
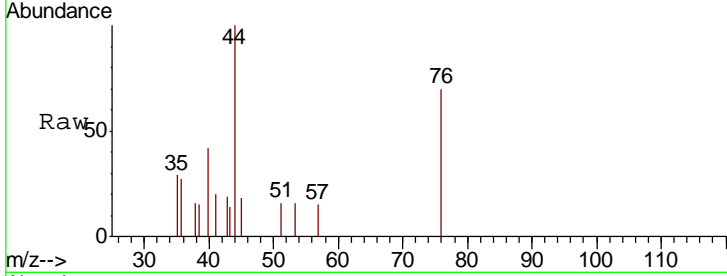




#17
 Carbon Disulfide
 Concen: 0.460 ug/l
 RT: 2.57 min Scan# 232
 Delta R.T. 0.00 min
 Lab File: VX010019.D
 Acq: 01 Jun 2019 05:39

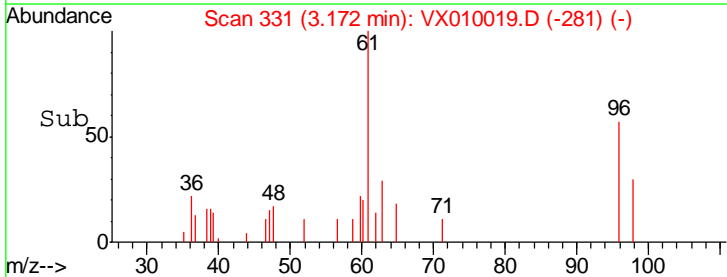
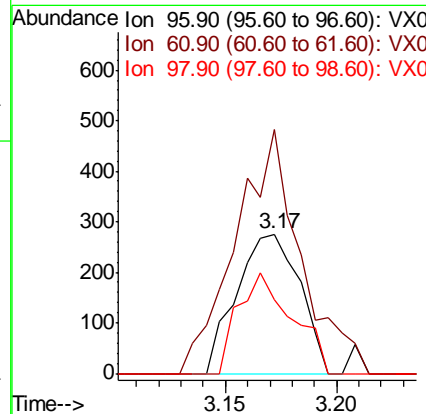
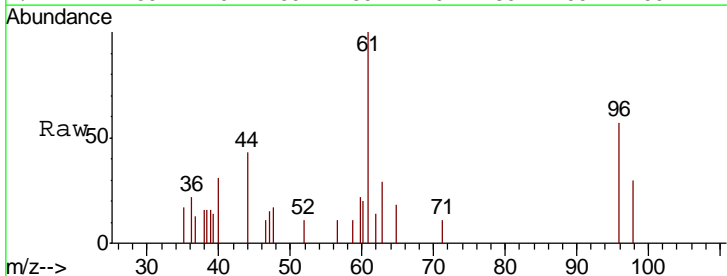
Instrument :
 MSVOA_X
ClientSampleId :
 LF012RW164-190529

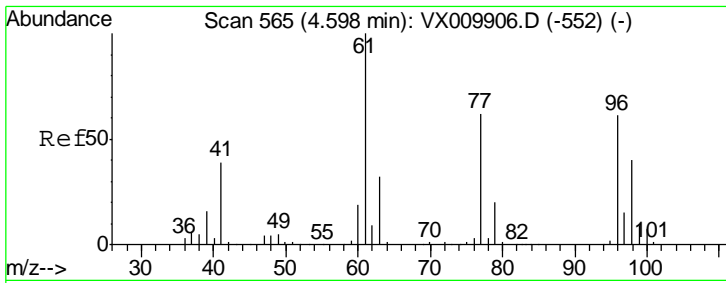
Tgt Ion	Resp	Lower	Upper
76	396		
78	0.0	7.0	10.6#



#21
 trans-1,2-Dichloroethene
 Concen: 0.282 ug/l
 RT: 3.17 min Scan# 331
 Delta R.T. 0.01 min
 Lab File: VX010019.D
 Acq: 01 Jun 2019 05:39

Tgt Ion	Resp	Lower	Upper
96	544		
61	153.3	125.7	188.5
98	52.9	49.0	73.6

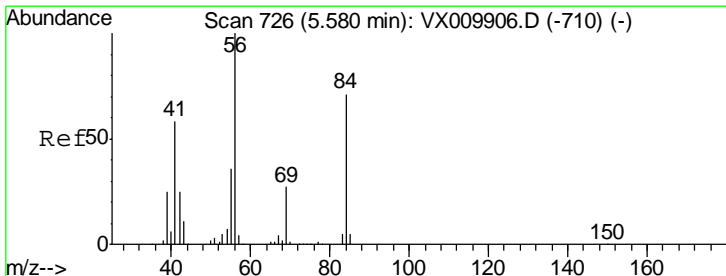
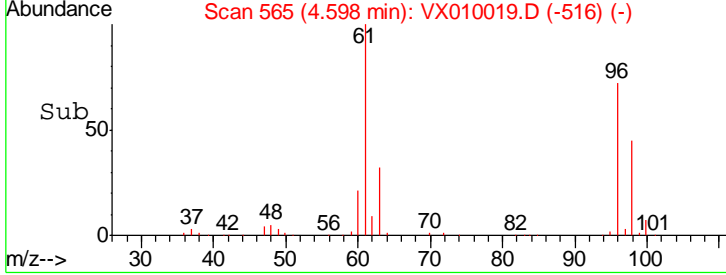
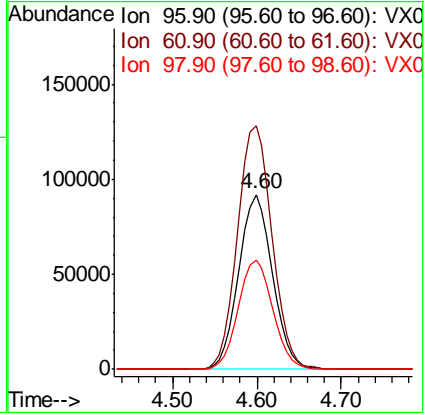
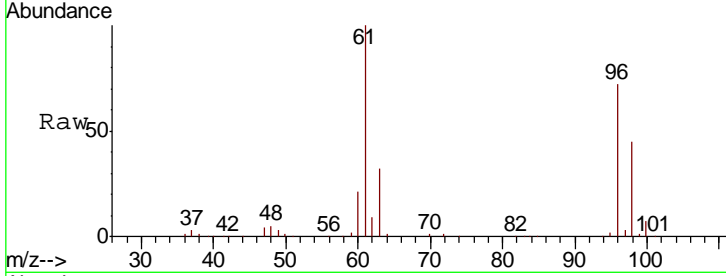




#27
 cis-1,2-Dichloroethene
 Concen: 112.324 ug/l
 RT: 4.60 min Scan# 565
 Delta R.T. 0.00 min
 Lab File: VX010019.D
 Acq: 01 Jun 2019 05:39

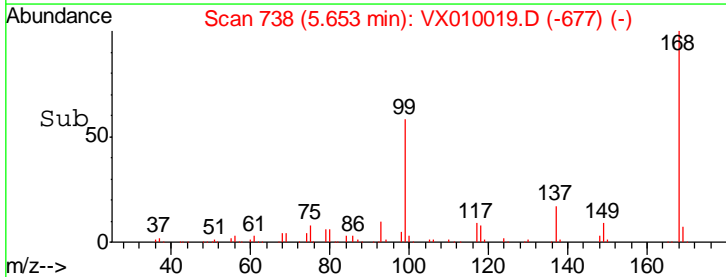
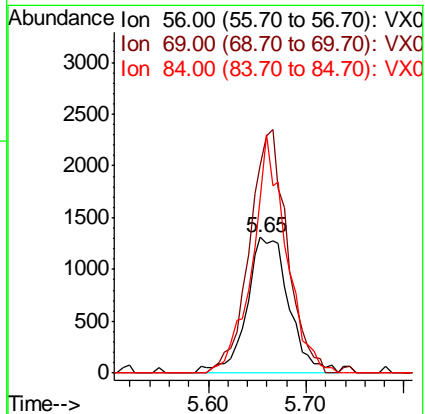
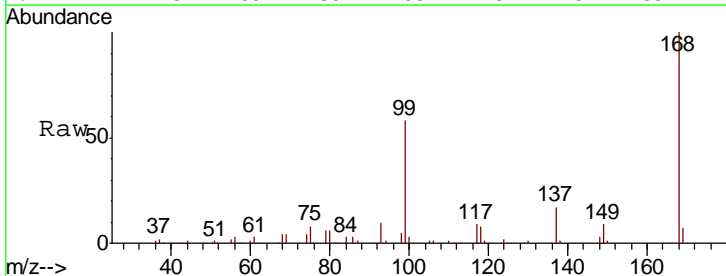
Instrument :
 MSVOA_X
ClientSampled :
 LF012RW164-190529

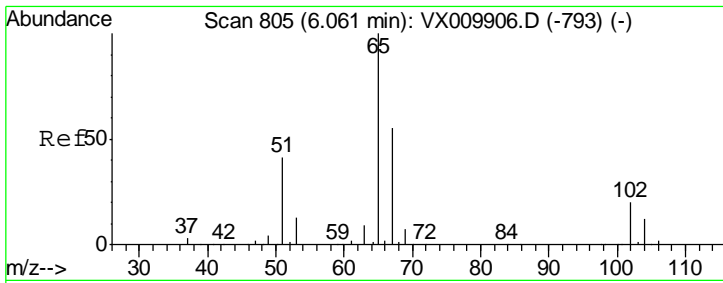
Tgt Ion	Resp	Lower	Upper
96	249763		
Ion Ratio			
96	100		
61	142.8	0.0	334.0
98	64.0	0.0	131.6



#31
 Cyclohexane
 Concen: 1.070 ug/l
 RT: 5.65 min Scan# 738
 Delta R.T. 0.07 min
 Lab File: VX010019.D
 Acq: 01 Jun 2019 05:39

Tgt Ion	Resp	Lower	Upper
56	3932		
Ion Ratio			
56	100		
69	153.0	21.6	32.4#
84	128.6	56.8	85.2#

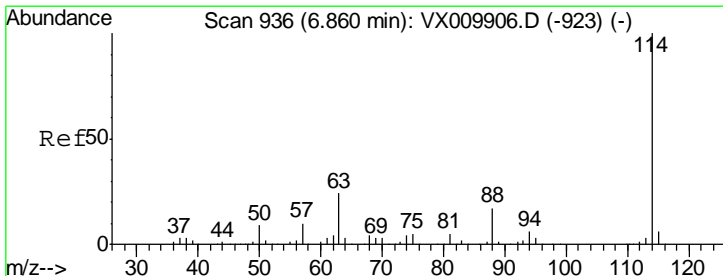
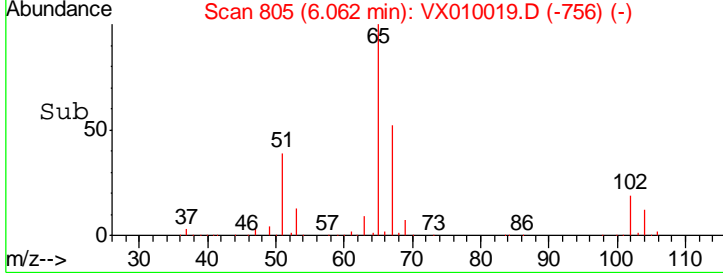
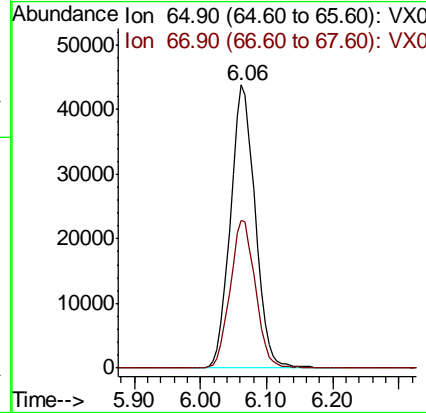
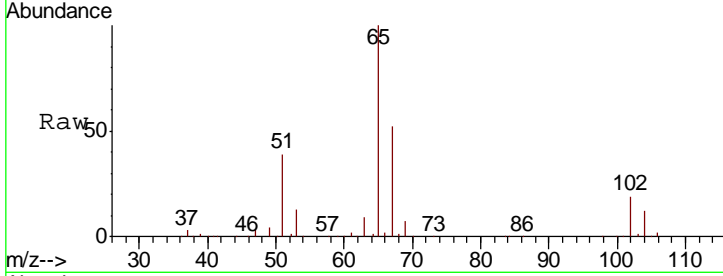




#33
 1,2-Dichloroethane-d4
 Concen: 46.998 ug/l
 RT: 6.06 min Scan# 805
 Delta R.T. 0.00 min
 Lab File: VX010019.D
 Acq: 01 Jun 2019 05:39

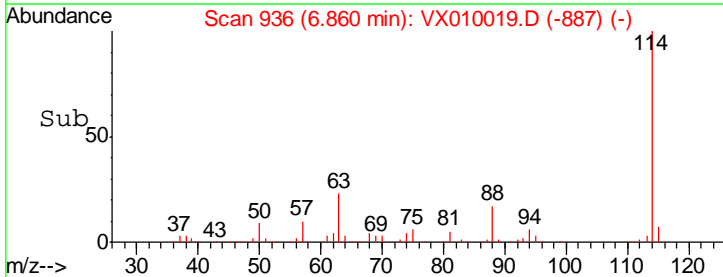
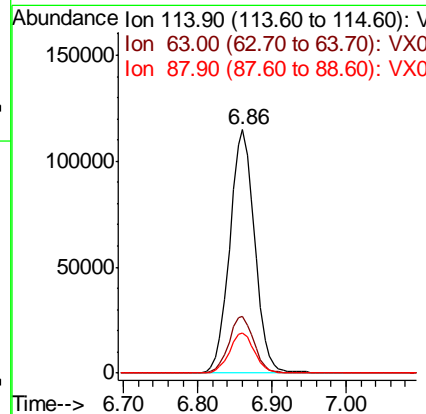
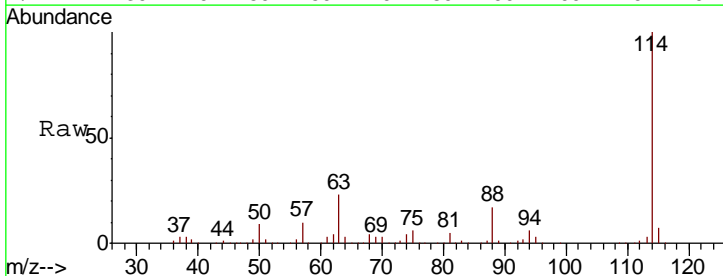
Instrument :
 MSVOA_X
 ClientSampleId :
 LF012RW164-190529

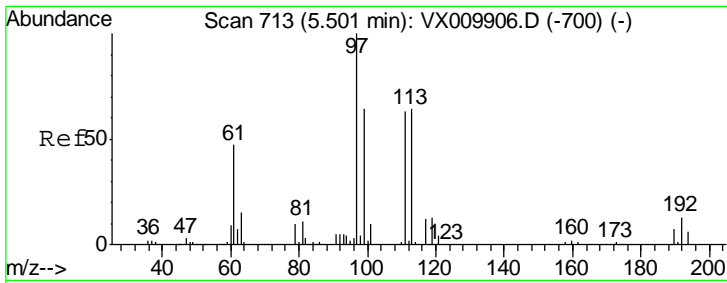
Tgt Ion	Resp	Lower	Upper
65	113490		
67	53.3	0.0	108.4



#34
 1,4-Difluorobenzene
 Concen: 50.000 ug/l
 RT: 6.86 min Scan# 936
 Delta R.T. 0.00 min
 Lab File: VX010019.D
 Acq: 01 Jun 2019 05:39

Tgt Ion	Resp	Lower	Upper
114	269277		
63	23.3	0.0	47.4
88	16.6	0.0	33.0

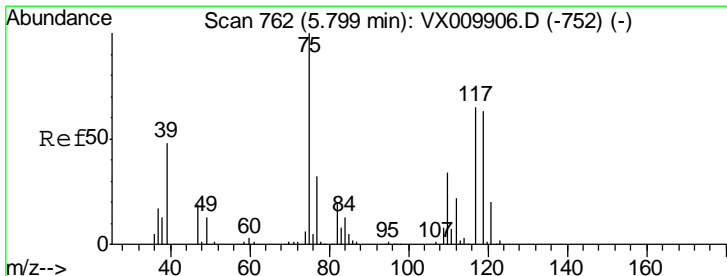
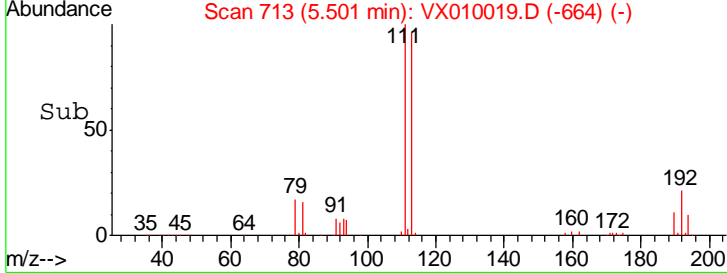
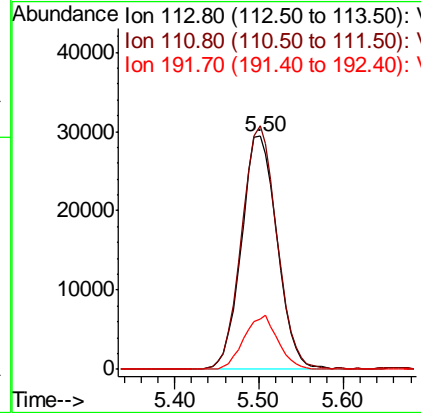
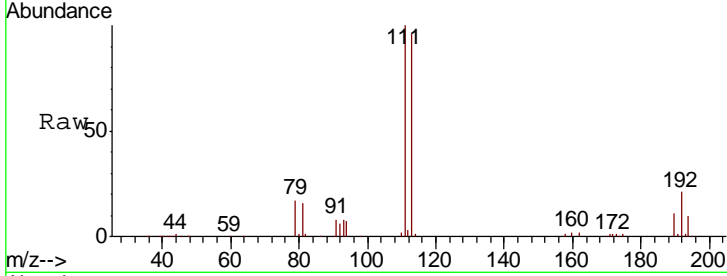




#35
 Dibromofluoromethane
 Concen: 49.851 ug/l
 RT: 5.50 min Scan# 713
 Delta R.T. 0.00 min
 Lab File: VX010019.D
 Acq: 01 Jun 2019 05:39

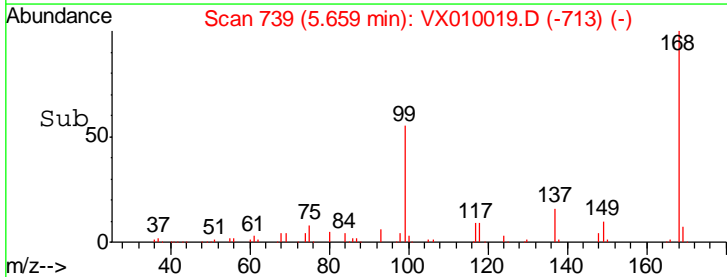
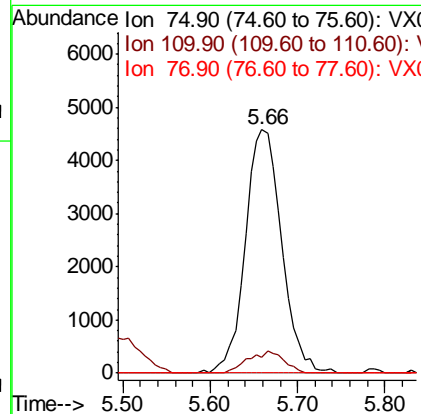
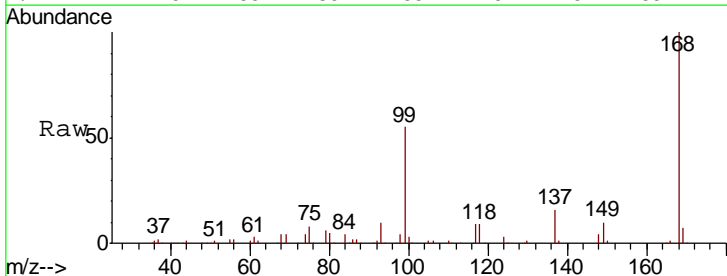
Instrument :
 MSVOA_X
ClientSampleId :
 LF012RW164-190529

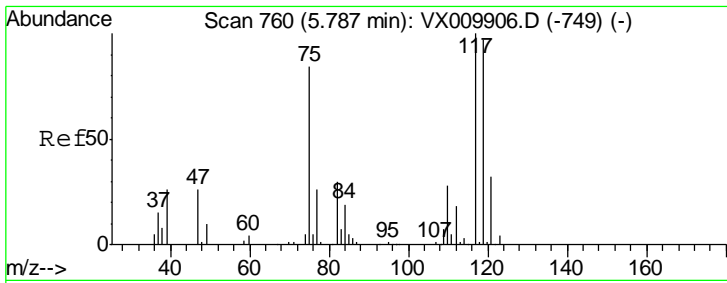
Tgt Ion	Resp	Lower	Upper
113	84395		
111	102.8	82.2	123.2
192	22.0	17.1	25.7



#36
 1,1-Dichloropropene
 Concen: 4.834 ug/l
 RT: 5.66 min Scan# 739
 Delta R.T. -0.14 min
 Lab File: VX010019.D
 Acq: 01 Jun 2019 05:39

Tgt Ion	Resp	Lower	Upper
75	13206		
110	9.0	16.7	50.1#
77	0.0	25.0	37.4#

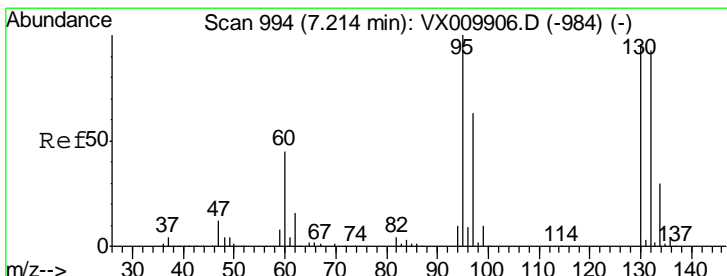
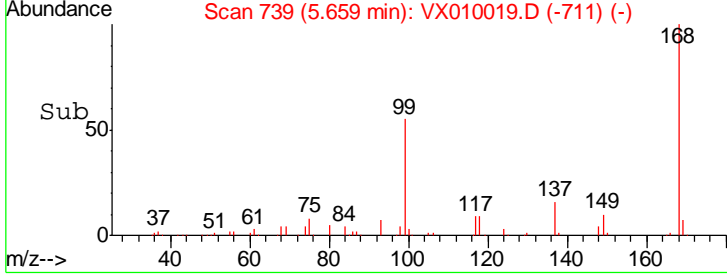
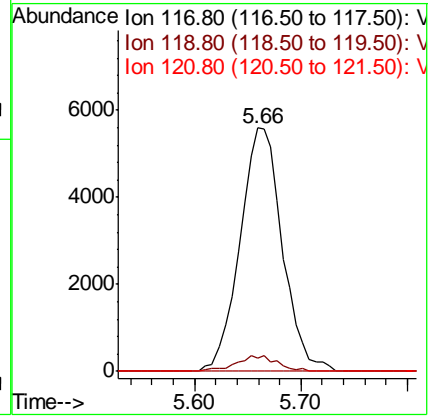
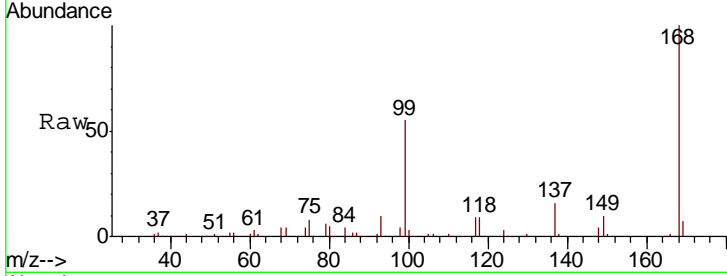




#38
 Carbon Tetrachloride
 Concen: 6.583 ug/l
 RT: 5.66 min Scan# 739
 Delta R.T. -0.13 min
 Lab File: VX010019.D
 Acq: 01 Jun 2019 05:39

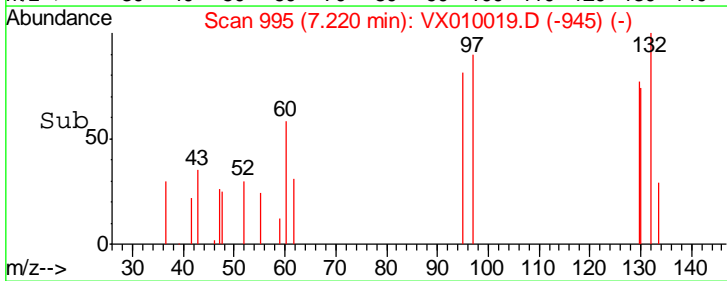
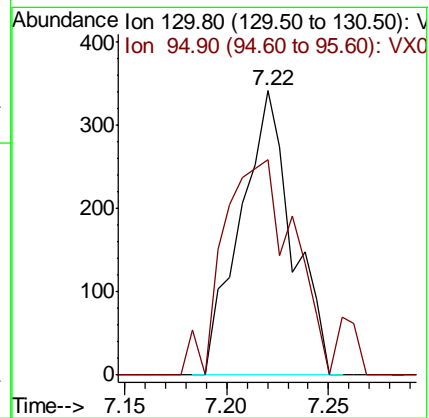
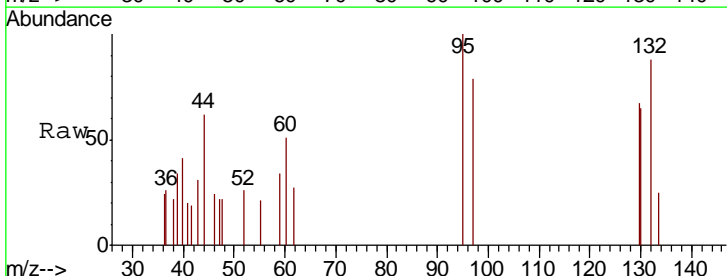
Instrument :
 MSVOA_X
ClientSampled :
 LF012RW164-190529

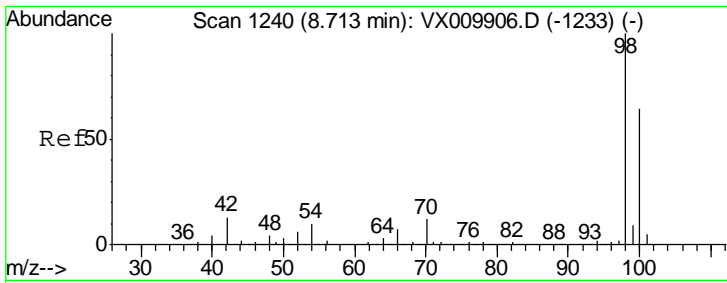
Tgt Ion	Resp	Lower	Upper
117	15543		
117	100		
119	5.2	77.3	115.9#
121	0.0	25.4	38.0#



#44
 Trichloroethene
 Concen: 0.307 ug/l
 RT: 7.22 min Scan# 995
 Delta R.T. 0.01 min
 Lab File: VX010019.D
 Acq: 01 Jun 2019 05:39

Tgt Ion	Resp	Lower	Upper
130	604		
130	100		
95	60.1	0.0	207.4

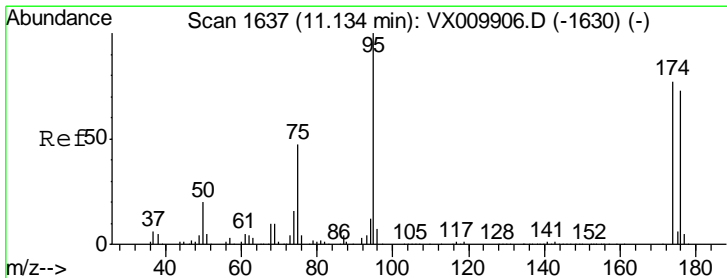
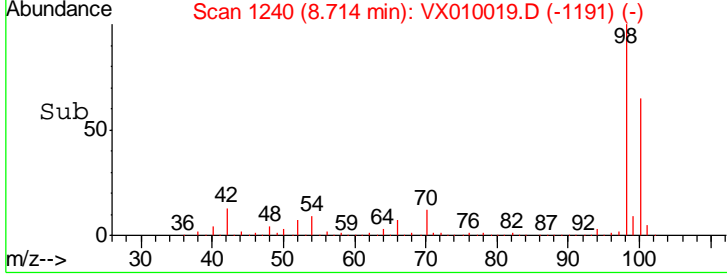
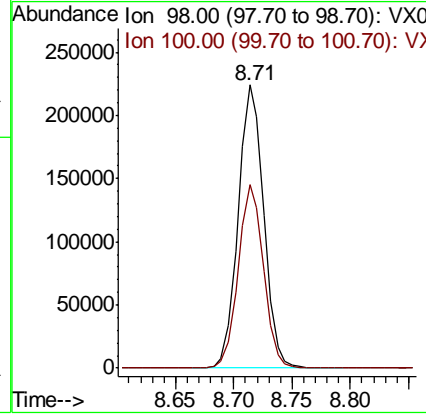
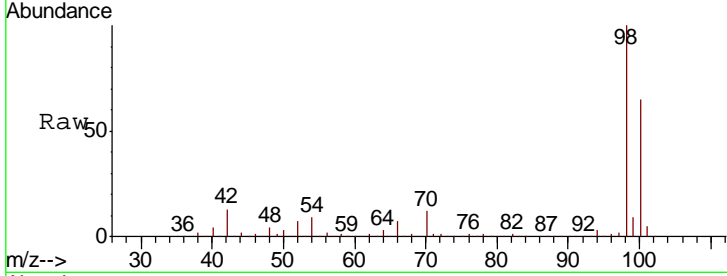




#50
 Toluene-d8
 Concen: 49.845 ug/l
 RT: 8.71 min Scan# 1240
 Delta R.T. 0.00 min
 Lab File: VX010019.D
 Acq: 01 Jun 2019 05:39

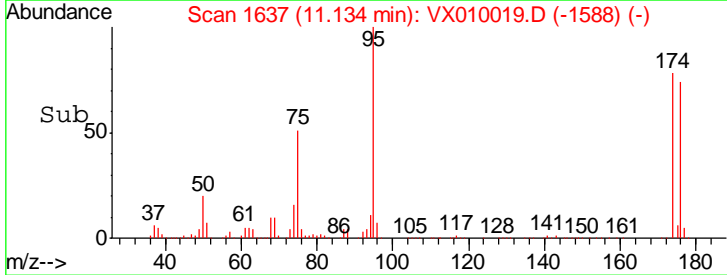
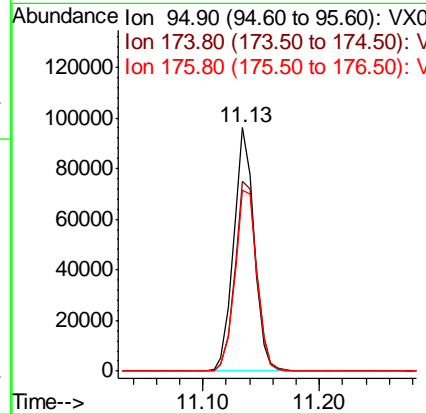
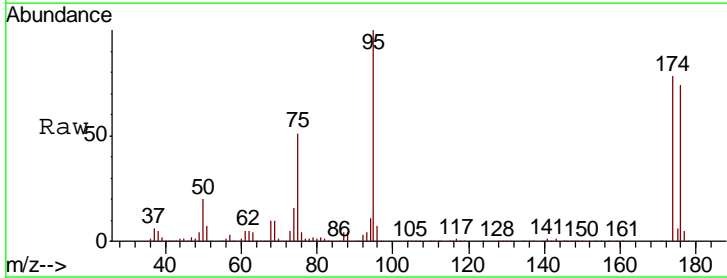
Instrument :
 MSVOA_X
ClientSampled :
 LF012RW164-190529

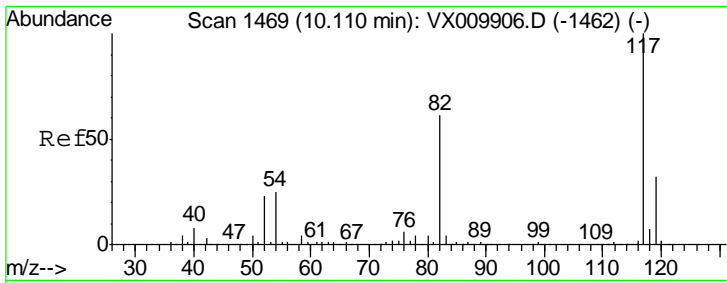
Tgt Ion	Resp	Lower	Upper
98	342672		
98	100		
100	64.1	51.5	77.3



#62
 4-Bromofluorobenzene
 Concen: 47.471 ug/l
 RT: 11.13 min Scan# 1637
 Delta R.T. 0.00 min
 Lab File: VX010019.D
 Acq: 01 Jun 2019 05:39

Tgt Ion	Resp	Lower	Upper
95	117219		
95	100		
174	83.3	0.0	160.4
176	79.8	0.0	154.6



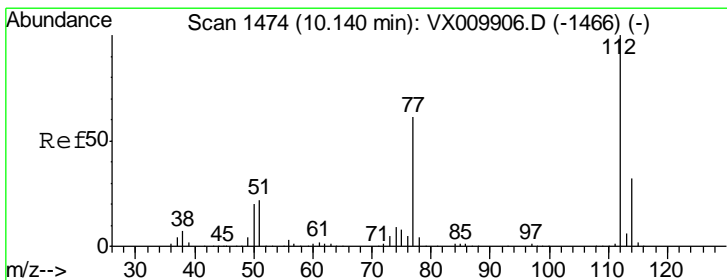
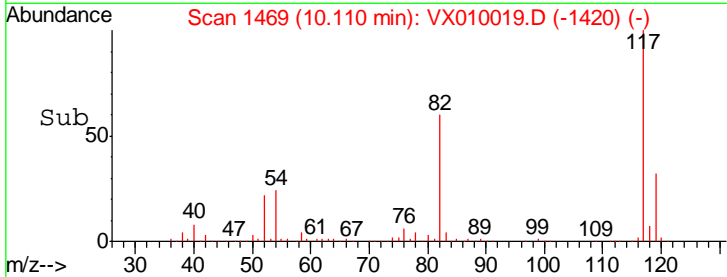
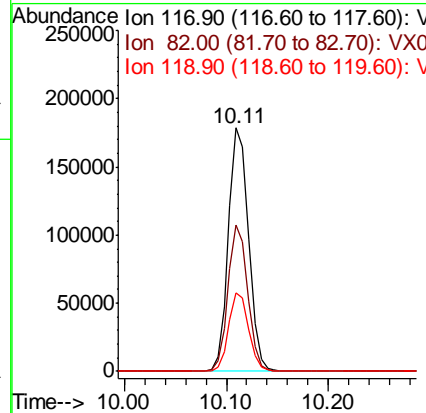
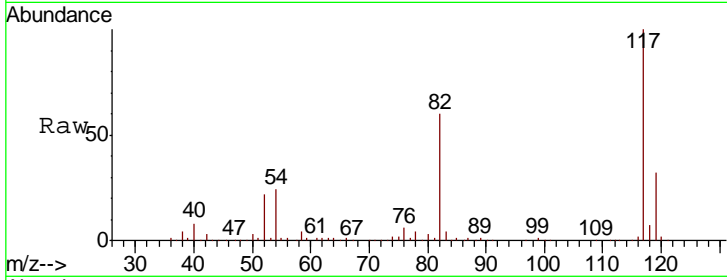


#63
 Chlorobenzene-d5
 Concen: 50.000 ug/l
 RT: 10.11 min Scan# 1469
 Delta R.T. 0.00 min
 Lab File: VX010019.D
 Acq: 01 Jun 2019 05:39

Instrument :
 MSVOA_X
 ClientSampleId :
 LF012RW164-190529

Tgt Ion: 117 Resp: 246084

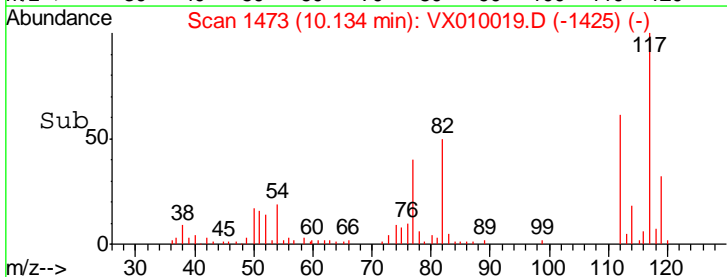
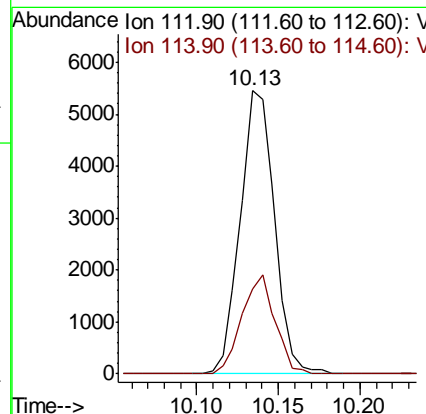
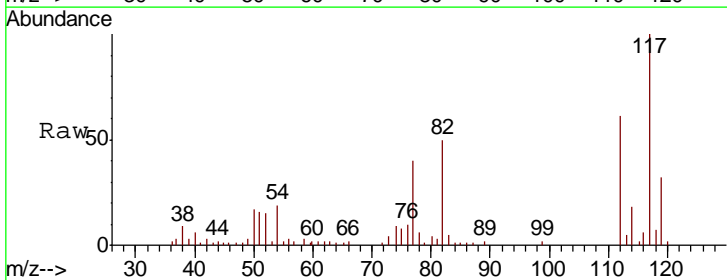
Ion	Ratio	Lower	Upper
117	100		
82	60.1	49.2	73.8
119	32.3	25.2	37.8

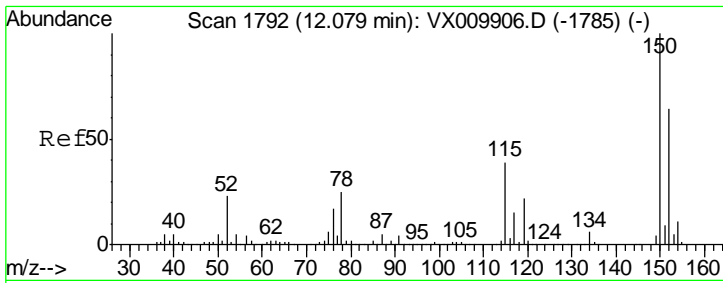


#65
 Chlorobenzene
 Concen: 1.551 ug/l
 RT: 10.13 min Scan# 1473
 Delta R.T. -0.01 min
 Lab File: VX010019.D
 Acq: 01 Jun 2019 05:39

Tgt Ion: 112 Resp: 7989

Ion	Ratio	Lower	Upper
112	100		
114	30.1	25.8	38.8

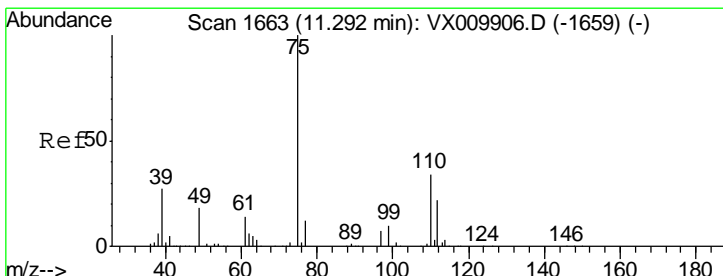
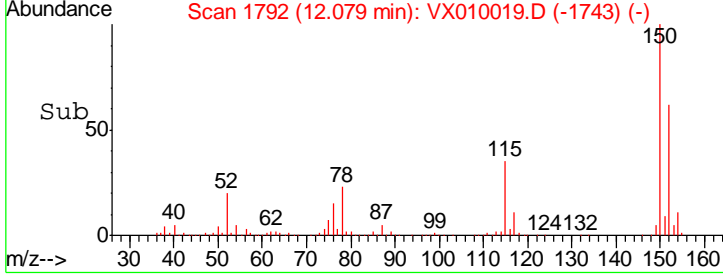
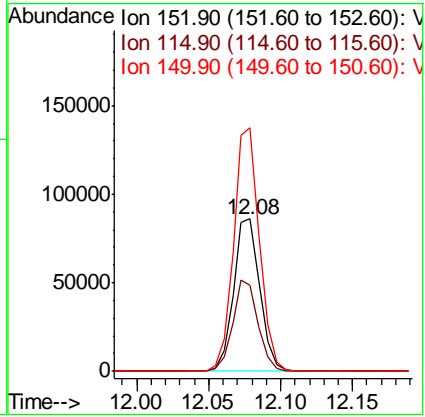
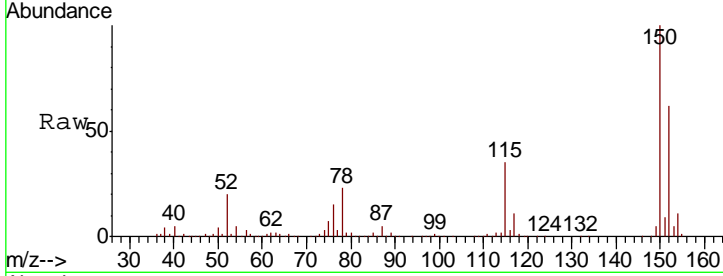




#72
 1,4-Dichlorobenzene-d4
 Concen: 50.000 ug/l
 RT: 12.08 min Scan# 1792
 Delta R.T. 0.00 min
 Lab File: VX010019.D
 Acq: 01 Jun 2019 05:39

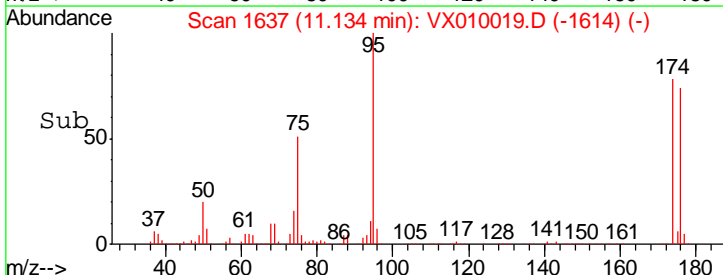
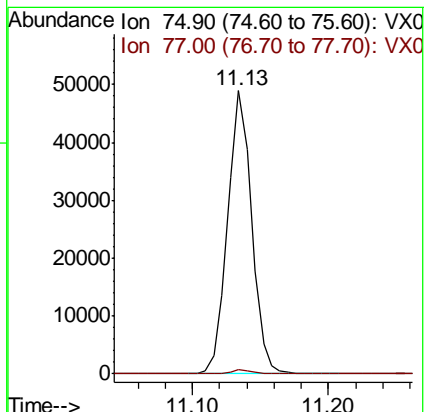
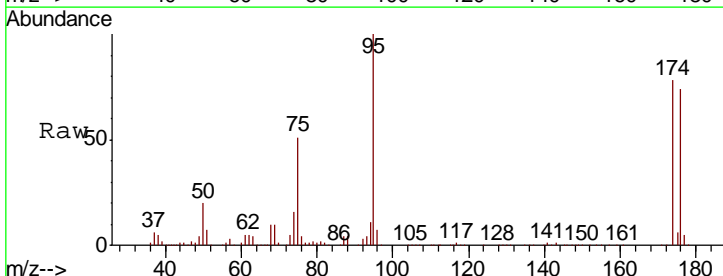
Instrument : MSVOA_X
 ClientSampled : LF012RW164-190529

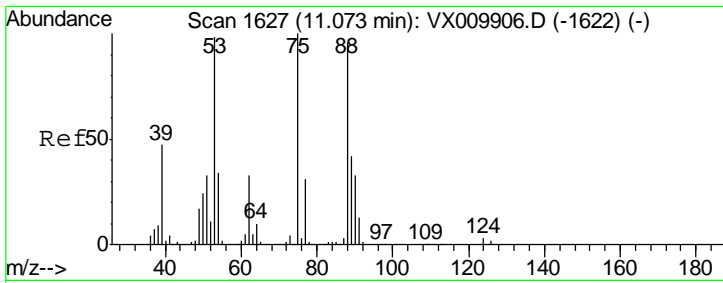
Tgt Ion	Resp	Lower	Upper
152	109349		
115	57.9	41.4	124.2
150	157.3	0.0	345.2



#76
 1,2,3-Trichloropropane
 Concen: 22.974 ug/l
 RT: 11.13 min Scan# 1637
 Delta R.T. -0.16 min
 Lab File: VX010019.D
 Acq: 01 Jun 2019 05:39

Tgt Ion	Resp	Lower	Upper
75	60074		
75	100		
77	1.3	22.1	66.1

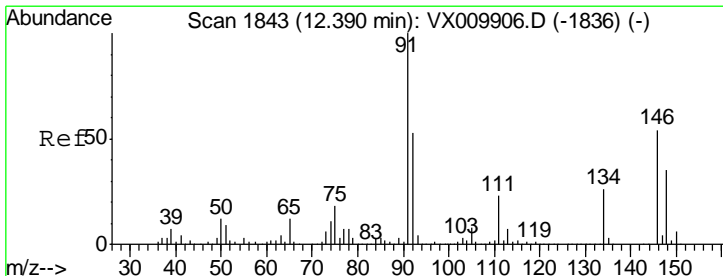
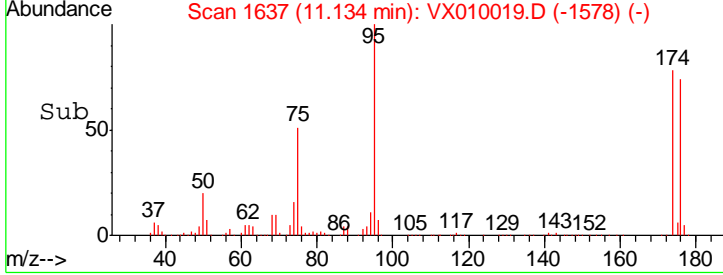
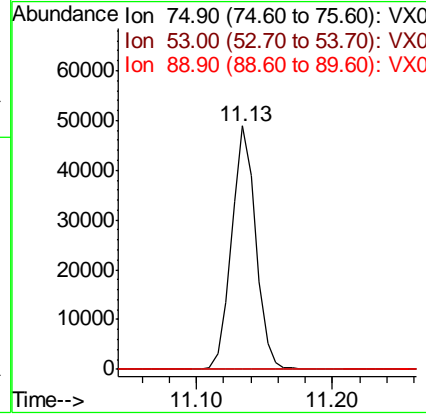
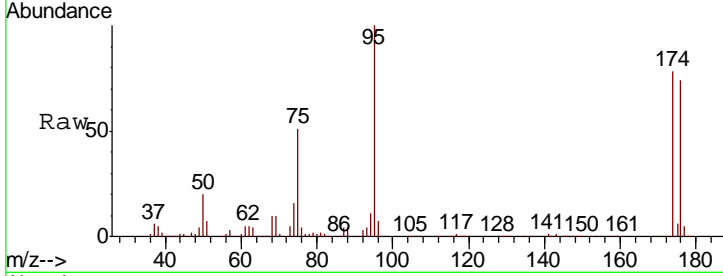




#81
 trans-1,4-Dichloro-2-butene
 Concen: 56.841 ug/l
 RT: 11.13 min Scan# 1637
 Delta R.T. 0.06 min
 Lab File: VX010019.D
 Acq: 01 Jun 2019 05:39

Instrument : MSVOA_X
 ClientSampled : LF012RW164-190529

Tgt Ion	Resp	Lower	Upper
75	100		
53	0.1	79.8	119.6#
89	0.0	34.2	51.4#



#91
 1,2-Dichlorobenzene
 Concen: 0.958 ug/l
 RT: 12.39 min Scan# 1843
 Delta R.T. 0.00 min
 Lab File: VX010019.D
 Acq: 01 Jun 2019 05:39

Tgt Ion	Resp	Lower	Upper
146	100		
111	42.1	21.1	63.1
148	62.6	32.3	96.8

