

Data Path : Z:\VOASRV\HPCHEM1\MSVOA X\DATA\VX053119\
 Data File : VX010017.D
 Acq On : 01 Jun 2019 04:52
 Operator : JC/SP
 Sample : K3129-02
 Misc : 5.0mL/MSVOA X/WATER
 ALS Vial : 49 Sample Multiplier: 1

Instrument :
 MSVOA_X
 ClientSampleId :
 LF012MW147-190528

Integration Parameters: RTEINT.P

Integrator: RTE
 Smoothing : ON Filtering: 5
 Sampling : 1 Min Area: 3 % of largest Peak
 Start Thrs: 0.2 Max Peaks: 100
 Stop Thrs : 0 Peak Location: TOP

If leading or trailing edge < 100 prefer < Baseline drop else tangent >
 Peak separation: 5

Method : Z:\VOASRV\HPCHEM1\MSVOA_X\METHOD\82X052819W.M
 Title : SW846 8260

Signal : TIC

peak #	R.T. min	first scan	max scan	last scan	PK TY	peak height	corr. area	corr. % max.	% of total
1	1.611	65	75	79	rBV7	4336	9656	1.05%	0.197%
2	4.598	551	565	577	rBV	43284	125573	13.70%	2.557%
3	5.501	698	713	726	rBV2	97786	280656	30.63%	5.716%
4	5.665	728	740	751	rBV	169083	481499	52.55%	9.806%
5	6.062	796	805	818	rBV	119616	314968	34.38%	6.415%
6	6.860	927	936	953	rBV	274896	652224	71.18%	13.284%
7	7.214	986	994	1005	rBV3	10673	24582	2.68%	0.501%
8	8.714	1232	1240	1250	rBV	589478	916258	100.00%	18.661%
9	9.555	1369	1378	1383	rBV2	6617	11508	1.26%	0.234%
10	10.110	1463	1469	1484	rBV	566498	793103	86.56%	16.153%
11	11.134	1631	1637	1644	rBV	464369	578809	63.17%	11.788%
12	12.079	1786	1792	1803	rBV	529426	678957	74.10%	13.828%
13	12.390	1837	1843	1849	rVB4	6766	10649	1.16%	0.217%
14	12.713	1892	1896	1904	rVB3	6344	10833	1.18%	0.221%
15	12.865	1917	1921	1926	rVB	7415	10175	1.11%	0.207%
16	13.457	2014	2018	2024	rBV2	7333	10577	1.15%	0.215%

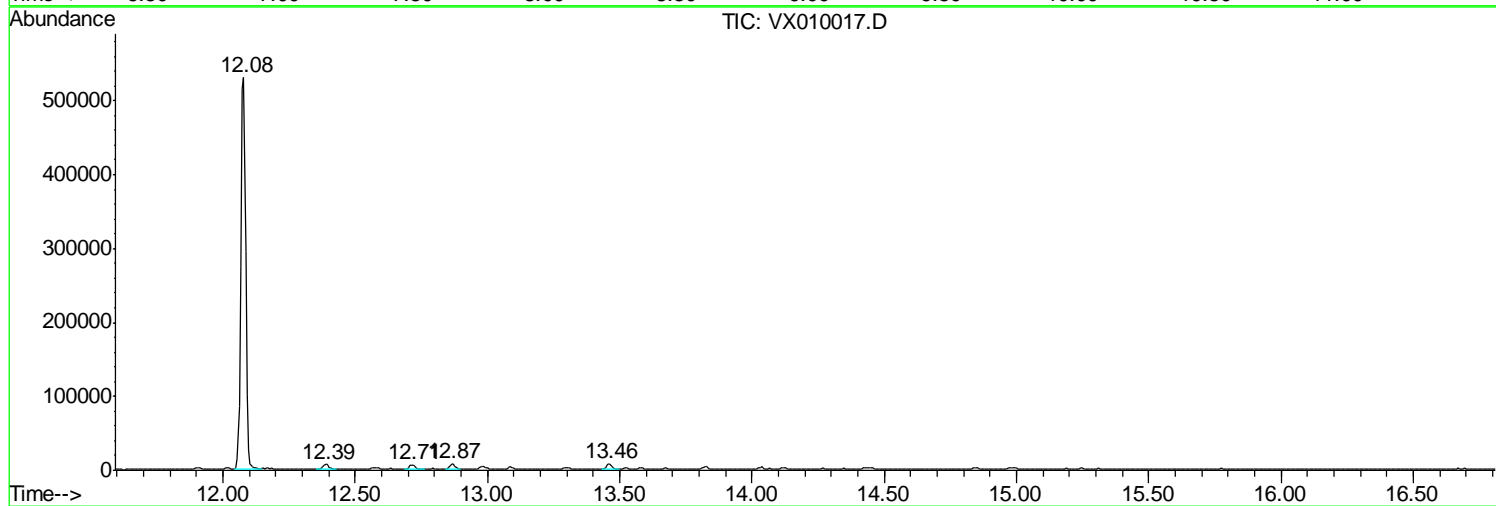
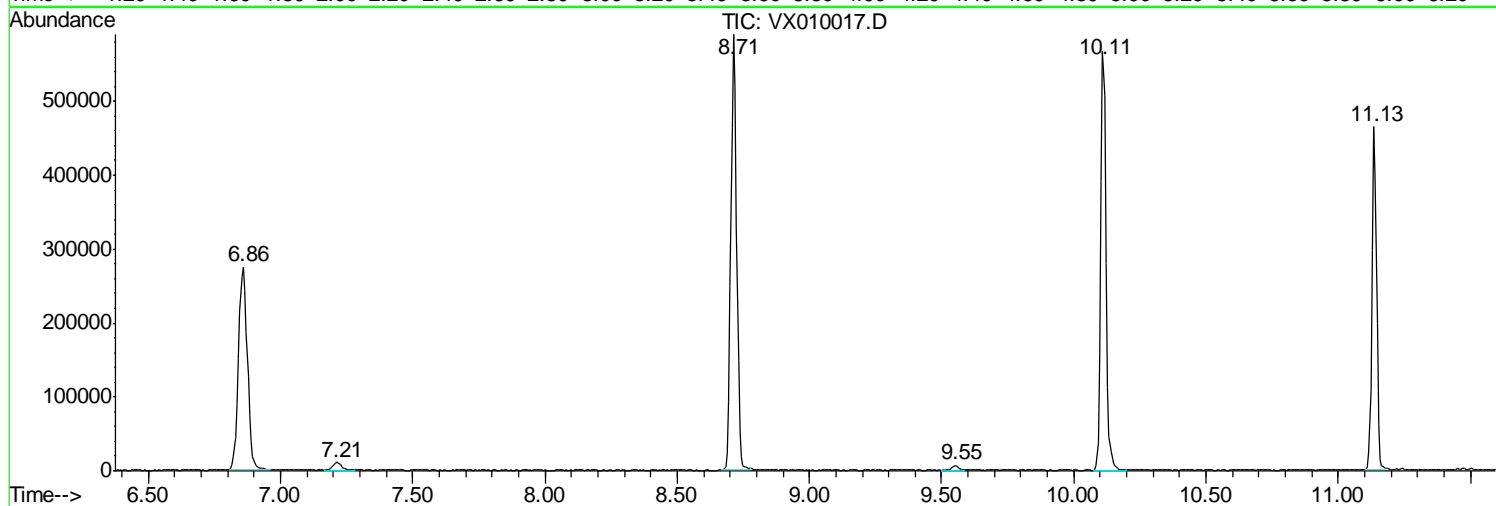
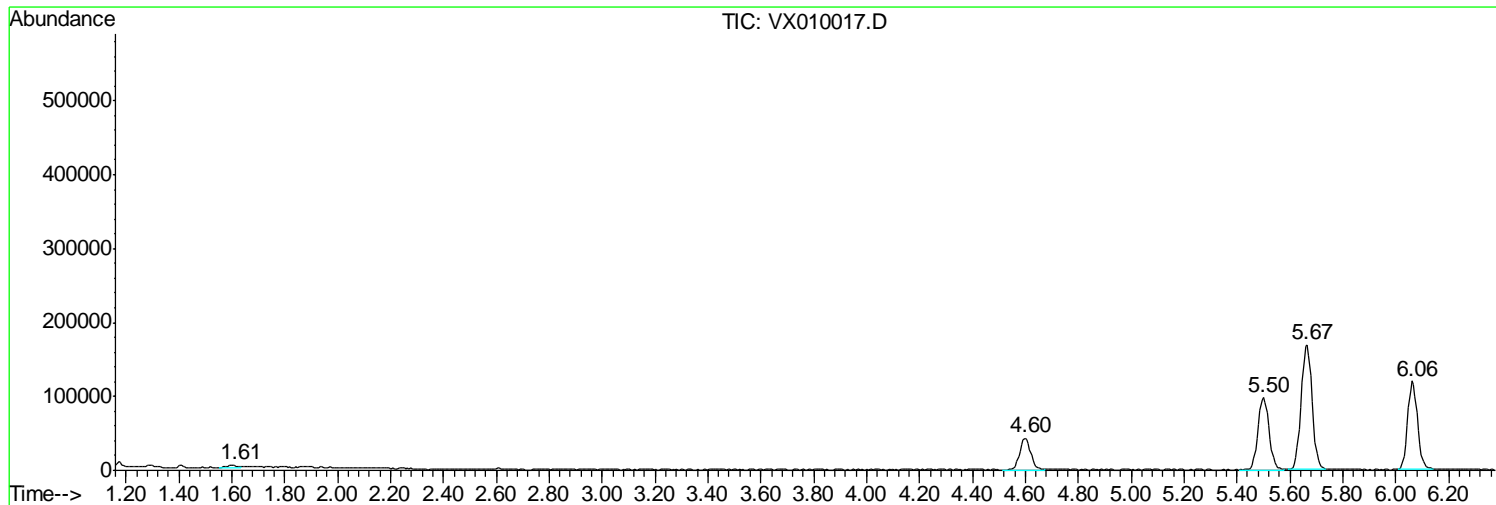
Sum of corrected areas: 4910027

Data Path : Z:\VOASRV\HPCHEM1\MSVOA X\DATA\VX053119\
Data File : VX010017.D
Acq On : 01 Jun 2019 04:52
Operator : JC/SP
Sample : K3129-02
Misc : 5.0mL/MSVOA X/WATER
ALS Vial : 49 Sample Multiplier: 1

Instrument :
MSVOA_X
ClientSampled :
LF012MW147-190528

Quant Method : Z:\VOASRV\HPCHEM1\MSVOA_X\METHOD\82X052819W.M
Quant Title : SW846 8260

TIC Library : C:\DATABASE\NIST11.L
TIC Integration Parameters: LSCINT.P



Data Path : Z:\VOASRV\HPCHEM1\MSVOA_X\DATA\VX053119\
Data File : VX010017.D
Acq On : 01 Jun 2019 04:52
Operator : JC/SP
Sample : K3129-02
Misc : 5.0mL/MSVOA_X/WATER
ALS Vial : 49 Sample Multiplier: 1

Instrument :
MSVOA_X
ClientSampleId :
LF012MW147-190528

Quant Method : Z:\VOASRV\HPCHEM1\MSVOA_X\METHOD\82X052819W.M
Quant Title : SW846 8260

TIC Library : C:\DATABASE\NIST11.L
TIC Integration Parameters: LSCINT.P

No Library Search Compounds Detected

Data Path : Z:\VOASRV\HPCHEM1\MSVOA_X\DATA\VX053119\
Data File : VX010017.D
Acq On : 01 Jun 2019 04:52
Operator : JC/SP
Sample : K3129-02
Misc : 5.0mL/MSVOA_X/WATER
ALS Vial : 49 Sample Multiplier: 1

Instrument :
MSVOA_X
ClientSampleId :
LF012MW147-190528

Quant Method : Z:\VOASRV\HPCHEM1\MSVOA_X\METHOD\82X052819W.M
Quant Title : SW846 8260

TIC Library : C:\DATABASE\NIST11.L
TIC Integration Parameters: LSCINT.P

TIC Top Hit name	RT	EstConc	Units	Response	--Internal Standard--			
					#	RT	Resp	Conc
